

Technical University of Denmark



Communicating spatial risk of tick-borne infections: Creating a ScandTick Innovation website based on surveillance data

Clausen, Cecilie Grønlund; Schou, Kirstine Klitgaard; Kirkeby, Carsten Thure; Bødker, Rene

Publication date:
2016

Document Version
Publisher's PDF, also known as Version of record

[Link back to DTU Orbit](#)

Citation (APA):
Clausen, C. G., Schou, K. K., Kirkeby, C., & Bødker, R. (2016). Communicating spatial risk of tick-borne infections: Creating a ScandTick Innovation website based on surveillance data. Poster session presented at SVEPM, Helsingør, Denmark.

DTU Library
Technical Information Center of Denmark

General rights

Copyright and moral rights for the publications made accessible in the public portal are retained by the authors and/or other copyright owners and it is a condition of accessing publications that users recognise and abide by the legal requirements associated with these rights.

- Users may download and print one copy of any publication from the public portal for the purpose of private study or research.
- You may not further distribute the material or use it for any profit-making activity or commercial gain
- You may freely distribute the URL identifying the publication in the public portal

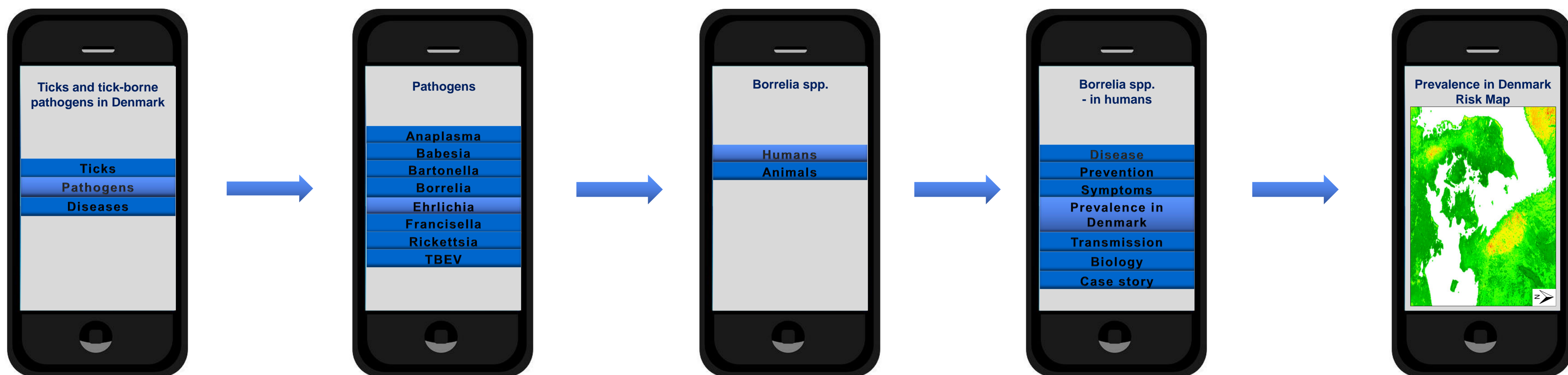
If you believe that this document breaches copyright please contact us providing details, and we will remove access to the work immediately and investigate your claim.

Communicating spatial risk of tick-borne infections

Creating a ScandTick Innovation website based on surveillance data

Cecilie Grønlund Clausen, Kirstine Klitgaard Schou, Carsten Kirkeby, René Bødker

Section for Epidemiology, National Veterinary Institute, Technical University of Denmark

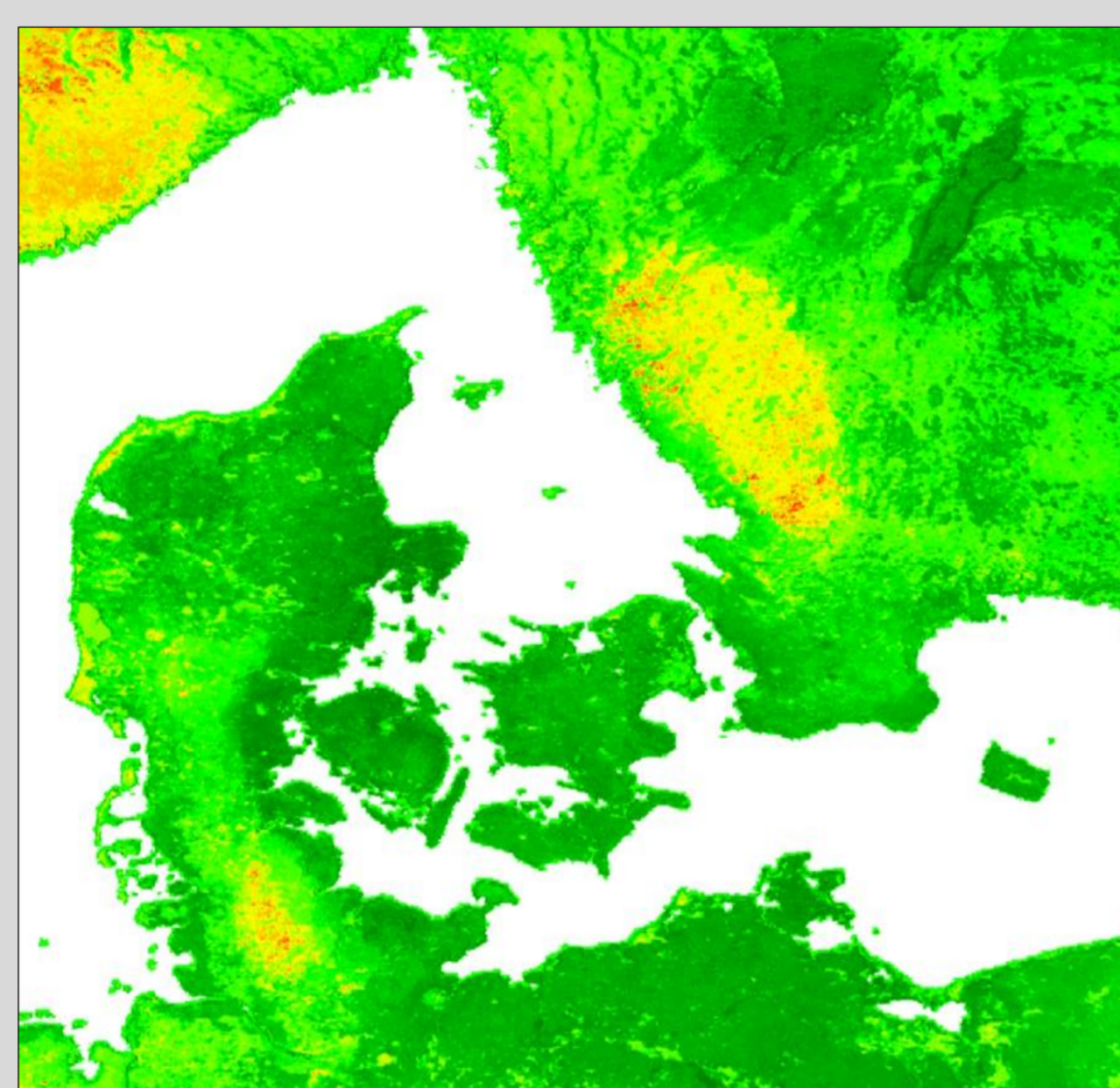


Introduction

On a new informative website we illustrate the spatial prevalence and variation of tick-borne pathogens in Denmark, which has been largely unknown until now. By increasing awareness of this variation, we aim to ensure early diagnosis, more effective prevention of tick-borne diseases and to provide quantitative risk estimates to health professionals.

Risk map

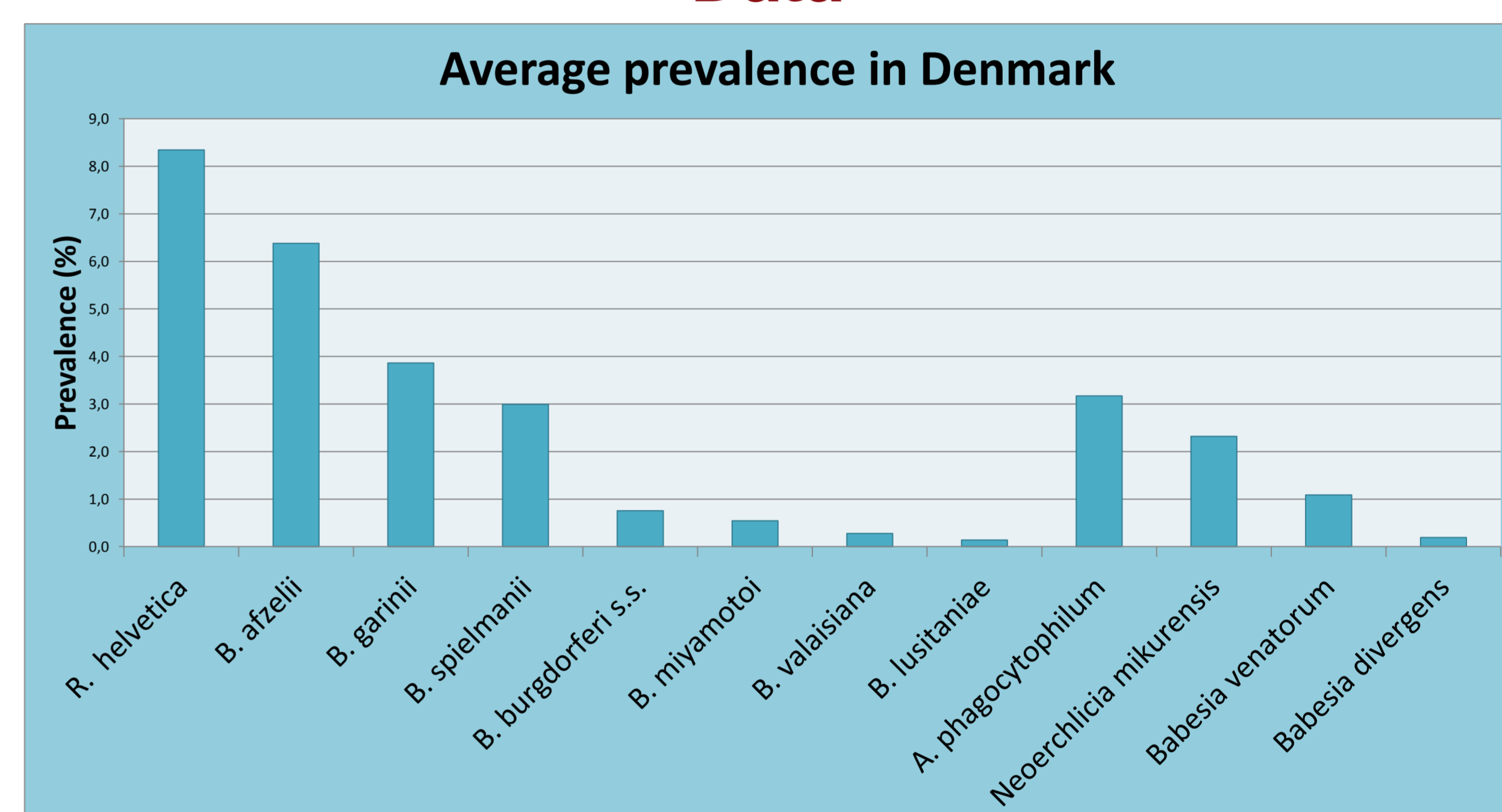
Map illustrating the probability finding a positive pool (N=15) of *Candidatus Neorhlichia mikurensis* throughout Denmark (green → red : increasing probability). This model was made using remote sensing and is based on preliminary data.



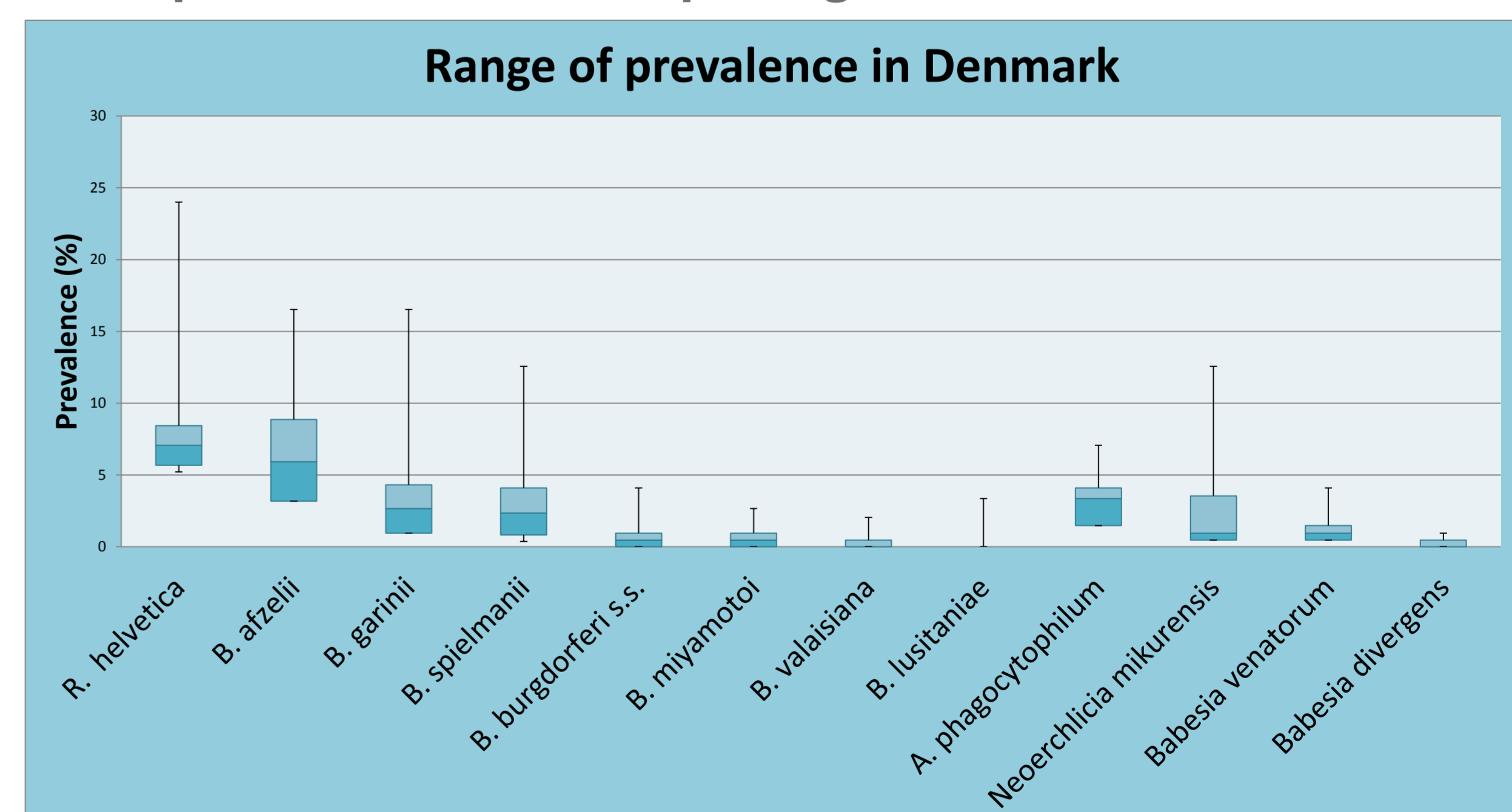
Website

The aim is to communicate quantitative and targeted information on ticks, pathogens and the risk of infection and illness. The website is directed towards the public, veterinarians and general practitioners and be quickly accessible from a smartphone.

Data



The average prevalence of tick-borne pathogens throughout Denmark makes it possible to rank the pathogens in order of abundance. *B. lusitanae* is the least and *R. helvetica* the most prevalent tick-borne pathogens in Denmark.



Illustrating the range of data for each pathogen reveals a geographical variation in the prevalence of tick-borne pathogens in Denmark. Fx. the prevalence *B. miyamotoi* ranges between 0% - 2,6%, indicating that the risk of infection will vary between geographical areas. This information can be helpful in the assessment of potential infection risks.

