

Technical University of Denmark



Spatial segregation of ocean migrating Atlantic salmon

Righton, David; Rikardsen, Auden; Hedger, Richard; Chittenden, Cedar; Davidsen, Jan; Okland, Finn; Næsje, Tor ; Gargan, Patrick; Thorstad, Eva B.; Halttunen, Elina; Aarestrup, Kim; McKinley, R. Scott

Publication date:
2015

Document Version
Publisher's PDF, also known as Version of record

[Link back to DTU Orbit](#)

Citation (APA):
Righton, D., Rikardsen, A., Hedger, R., Chittenden, C., Davidsen, J., Okland, F., ... McKinley, R. S. (2015). Spatial segregation of ocean migrating Atlantic salmon. Abstract from ICES Annual Science Conference 2015, Copenhagen, Denmark.

DTU Library

Technical Information Center of Denmark

General rights

Copyright and moral rights for the publications made accessible in the public portal are retained by the authors and/or other copyright owners and it is a condition of accessing publications that users recognise and abide by the legal requirements associated with these rights.

- Users may download and print one copy of any publication from the public portal for the purpose of private study or research.
- You may not further distribute the material or use it for any profit-making activity or commercial gain
- You may freely distribute the URL identifying the publication in the public portal

If you believe that this document breaches copyright please contact us providing details, and we will remove access to the work immediately and investigate your claim.

Spatial segregation of ocean migrating Atlantic salmon

David Righton¹, Auden Rikardsen², Richard Hedger³, Cedar Chittenden², Jan Davidsen³, Finn Okland⁴, Tor Naesje⁴, Patrick Gargan⁵, Eva Thorstad⁴, Elina Halttunen², Kim Aarestrup⁶, R. Scott McKinley⁷

¹Centre for Environment, Fisheries and Aquaculture Science (Cefas), Cefas Laboratory, Pakefield Road, Lowestoft, Suffolk, NR33 0HT, UK, ²Department of Arctic and Marine Biology, University of Tromsø, N-9037 Tromsø, Norway, ³Museum of Natural History and Archaeology, Norwegian University of Science and Technology (NTNU), N-7491 Trondheim, Norway, ⁴Norwegian Institute for Nature Research (NINA), N-7485 Trondheim, Norway, ⁵Inland Fisheries Ireland, Swords Business Campus, Co. Dublin, Ireland, ⁶Technical University of Denmark, National Institute of Aquatic Resources, Silkeborg, Denmark, ⁷The University of British Columbia, 2329 West Mall Vancouver, B.C. V6T 1Z4 - Canada. Contact email: david.righton@cefas.co.uk

Summary

Catches and survival of Atlantic salmon in the North Atlantic have declined by ~70% since the 1970s. The cause of the decline has been attributed to overfishing and reduced marine survival that, in the latter case, links to ocean climate. However, the links between ocean processes, habitat occupation and marine survival of salmon are only poorly understood. We used pop-up satellite archival tags (PSATs) to observe the behaviour and oceanic migration of more than 150 kelt salmon from eight different Atlantic salmon populations within the North Atlantic. We show that the primary migration routes of different populations aligned with surface ocean currents, with the result that kelts moved rapidly northward and/ or westward after release to productive frontal areas off Greenland. Populations were spatially segregated during the feeding season, with more northerly populations exploiting latitudes higher than 70N during the Arctic summer, while more southerly populations exploited feeding grounds further south. Mixing of northern populations occurred at high and medium latitudes, while southern populations mixed in waters to the east of Greenland. Predicted changes in the location and strength of the polar front due to a more variable and changing climate are likely to impact the feeding migrations of kelt salmon, with consequent effects on population mixing with consequences for the interpretation of genetic sampling programmes.

Introduction

Catches and survival of Atlantic salmon (*Salmo salar*) in the North Atlantic have declined by ~70% since 1970s. Similar situations have also been reported for several Pacific salmon species. Furthermore, the scale of the decline is not homogeneous: some southern populations have been virtually extirpated, while the decline of northerly stock components risks further loss of population diversity. This decline has been linked to low marine survival rates and stimulated interest in the spatial and temporal distribution of Atlantic salmon during marine feeding. Despite being one of the worlds most studied fish species, knowledge of detailed movement patterns, residence locations, environmental conditions, and the behavior of Atlantic salmon while at sea is generally very limited. We assessed migration routes, spatial overlap and at-sea behaviour of Atlantic salmon from populations

in northern Europe to gain a greater understanding of environmental and population influences on oceanic space use.

Materials and Methods

We used pop-up satellite archival tags (PSAT) and archival data storage tags to study the marine migrations of Atlantic salmon kelts from six river systems in Europe (spread from 51°N in southern Ireland to 70°N in northern Norway) and from North American maiden salmon tagged at the coast of West Greenland. Tags were programmed to pop-off after periods between 90 and 300 days. In total, we received data from 125 PSATs and 24 data loggers, which together yielded >22,000 days of data. All time-series data received from the tags were combined into a database and summarised to provide daily estimates of mean, maximum and minimum depth and temperature. Daily estimates of geographic location were made using a bespoke geolocation method that used sunrise/sunset data, maximum depth and sea surface temperature as inputs.

Results and Discussion

Tagged kelts travelled from river release to reside during summer in productive frontal zones where Atlantic surface currents meet south-flowing Arctic waters. Populations from northern river systems (Norway, Denmark) occupied overlapping but spatially segregated foraging areas at high latitudes, while populations from more southern rivers (Iceland, Ireland) occupied lower latitudes off the coast of Greenland. Individuals from the same river tagged in different years showed fidelity to the same oceanic regions. Kelts spent the majority of their time in surface waters when migrating, with occasional dives to great depth (Figure 1). Maximum dive depth was greater when salmon were within foraging areas, and they spent significantly more time at 50-100m than during the migratory phase. Maximum dive depth also increased as the year progressed, with the consequence that average or median occupied depth also peaked in late summer in northern latitudes. The spatial segregation of eastern and western populations helps to explain previously described variation in productivity between northern and southern European salmon populations. Our results help to shed light on important ecological process that shape Atlantic salmon population dynamics, and which may help to identify measures that will help set and refine management targets.

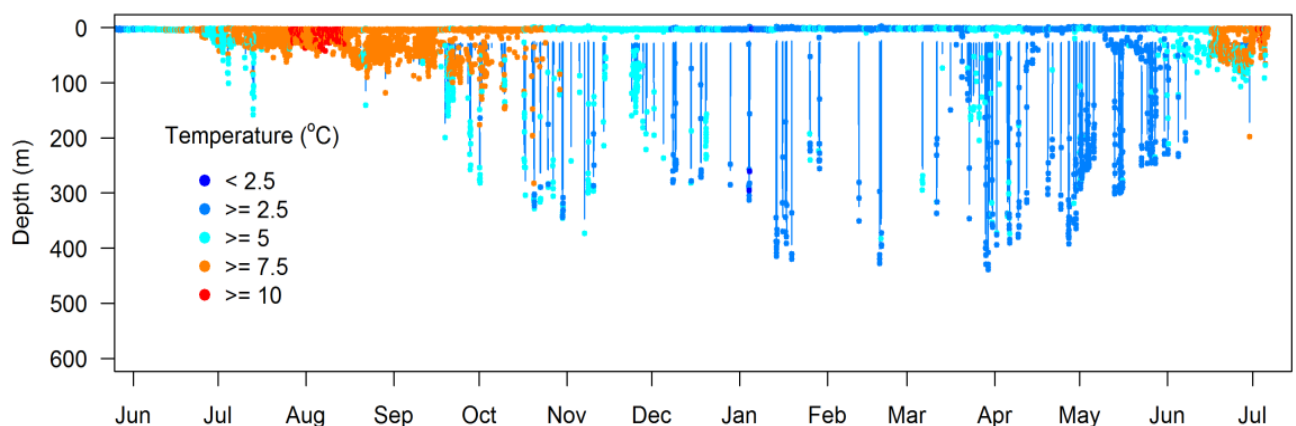


Figure 1. Depth and temperature profile of a kelt salmon that migrated to polar waters from the Alta river before recapture one year after release.