

Mere end struktur - moderne anvendelse af højopløselig airborne geofysik i hydrologiske modeller

Vilhelmsen, Troels; Marker, Pernille Aabye; Foged, Nikolaj; Wernberg, Thomas; Høyer Christensen, Anne-Sophie; Bauer-Gottwein, Peter; Christensen, Steen; Auken, Esben

Publication date:
2015

Document Version
Publisher's PDF, also known as Version of record

[Link back to DTU Orbit](#)

Citation (APA):
Vilhelmsen, T., Marker, P. A., Foged, N., Wernberg, T., Høyer Christensen, A-S., Bauer-Gottwein, P., ... Auken, E. (2015). Mere end struktur - moderne anvendelse af højopløselig airborne geofysik i hydrologiske modeller [2D/3D (physical products)]. Hydrologidag 2015 , Odense, Denmark, 29/10/2015

DTU Library Technical Information Center of Denmark

General rights

Copyright and moral rights for the publications made accessible in the public portal are retained by the authors and/or other copyright owners and it is a condition of accessing publications that users recognise and abide by the legal requirements associated with these rights.

- Users may download and print one copy of any publication from the public portal for the purpose of private study or research.
- You may not further distribute the material or use it for any profit-making activity or commercial gain
- You may freely distribute the URL identifying the publication in the public portal

If you believe that this document breaches copyright please contact us providing details, and we will remove access to the work immediately and investigate your claim.

Mere end struktur



*- moderne anvendelse af højopløselig
airborne geofysik i hydrologiske modeller*

Troels Vilhelmsen, AU; Pernille Marker, DTU; Nikolaj Foged, AU

Thomas Wernberg, Alectia; Anne-Sophie Høyer Christensen, GEUS

Peter Bauer-Gottwein, DTU; Steen Christensen, AU; Esben Auken, AU



Strukturel usikkerhed...

Capture zone, travel time, and solute-transport predictions using inverse modeling and different geological models

William G. Harrar · Torben Obel Sonnenborg ·
Hans Jørgen Henriksen

WATER RESOURCES RESEARCH, VOL. 48, W06503, doi:10.1029/2011WR011149, 2012

- › ministes ont été utilisés pour définir les distributions de la
- conductivité hydraulique dans deux modèles d'écoulement en régime permanent qui ont été calibrés avec des
- 1 estimations des charges et des écoulements de base faites
- 2 par des techniques inverses. Les estimations optimisées

Assessment of hydrological model predictive ability given multiple conceptual geological models

Dorte Seifert,¹ Torben O. Sonnenborg,² Jens Christian Refsgaard,² Anker L. Højberg,²
and Lars Trolldborg²

Use of alternative conceptual models to assess the impact of a buried valley on groundwater vulnerability

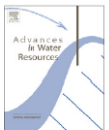
Dorte Seifert · Torben O. Sonnenborg ·
Peter Scharling · Klaus Hinsby



Contents lists available at ScienceDirect

Advances in Water Resources

journal homepage: www.elsevier.com/locate/advwatres



Review of strategies for handling geological uncertainty in groundwater flow and transport modeling

Jens Christian Refsgaard^{a,*}, Steen Christensen^b, Torben O. Sonnenborg^a, Dorte Seifert^c,
Anker Lajer Højberg^a, Lars Trolldborg^a

^a Geological Survey of Denmark and Greenland (GEUS), Øster Voldgade 10, DK-1350 Copenhagen K, Denmark

^b Department of Earth Sciences, Aarhus University, Denmark

^c ALECTIA, Denmark

Autogenerering af hydrostratigrafiske modeller fra SkyTEM data og boringsbeskrivelser

Kan denne metode anvendes til evaluering af strukturel usikkerhed

CF-Resistivity clustering

Input

- Resistivity model
- Borehole lithology

Clay fraction

Input

- Clay fraction model
- Resistivity model

3D cluster model

Input

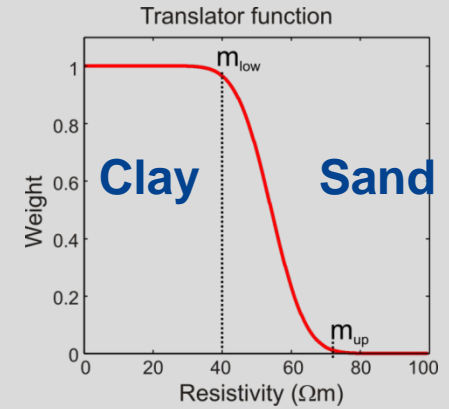
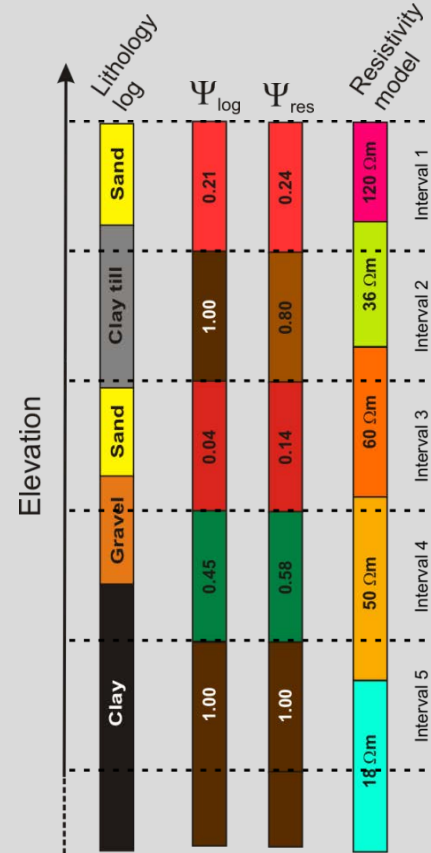
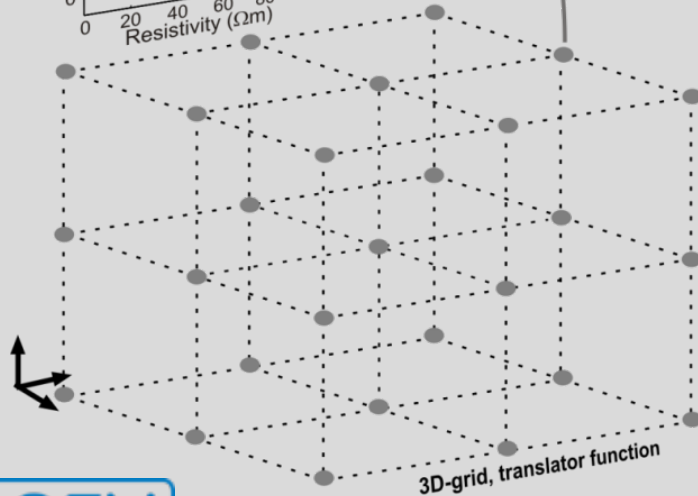
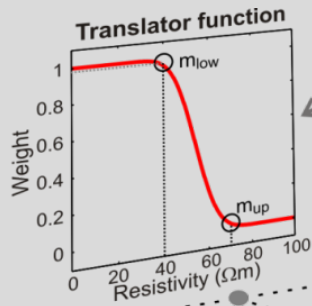
- Cluster model
- Potential head
- Stream discharge

Hydrological model calibration

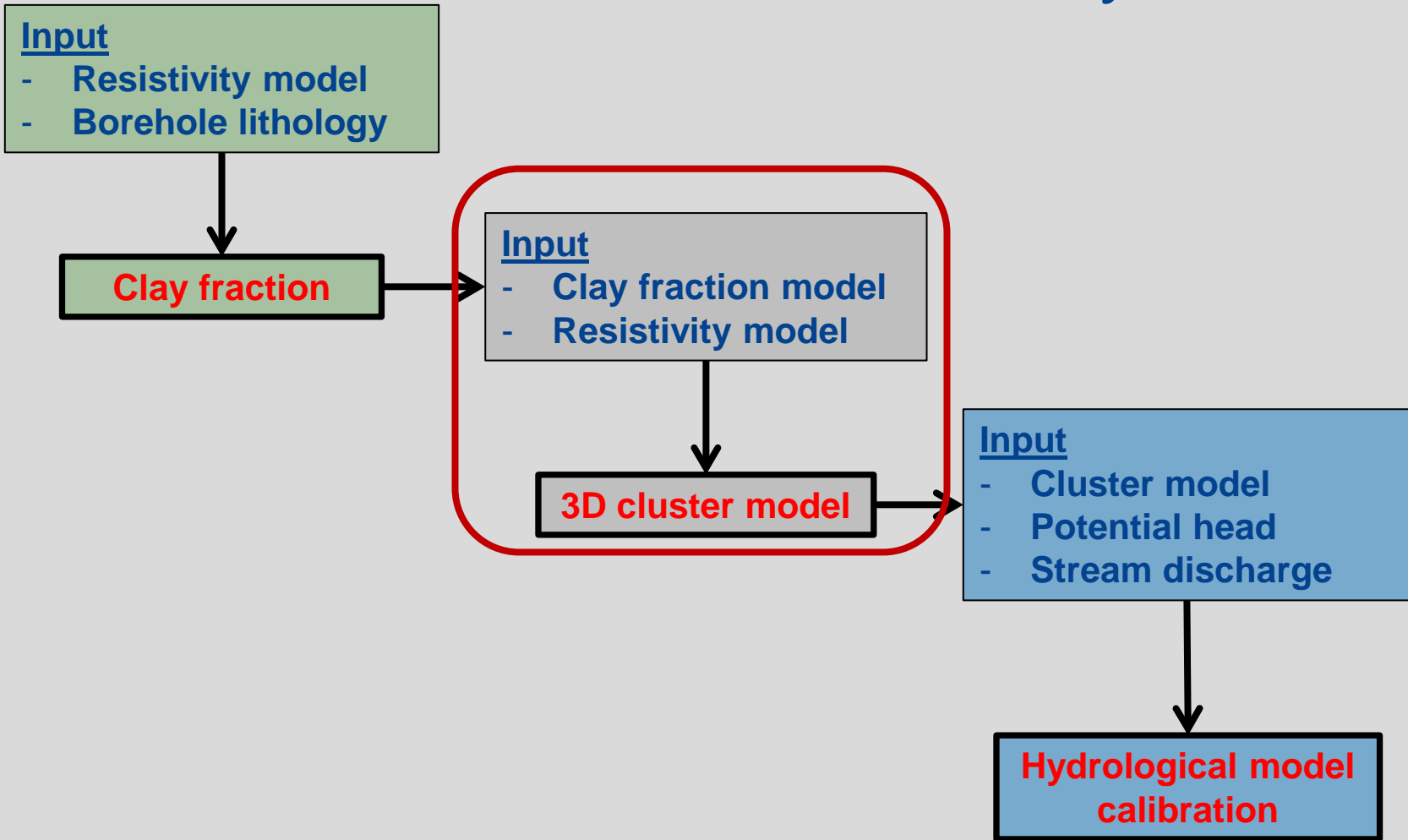


Clay fraction (CF) concept

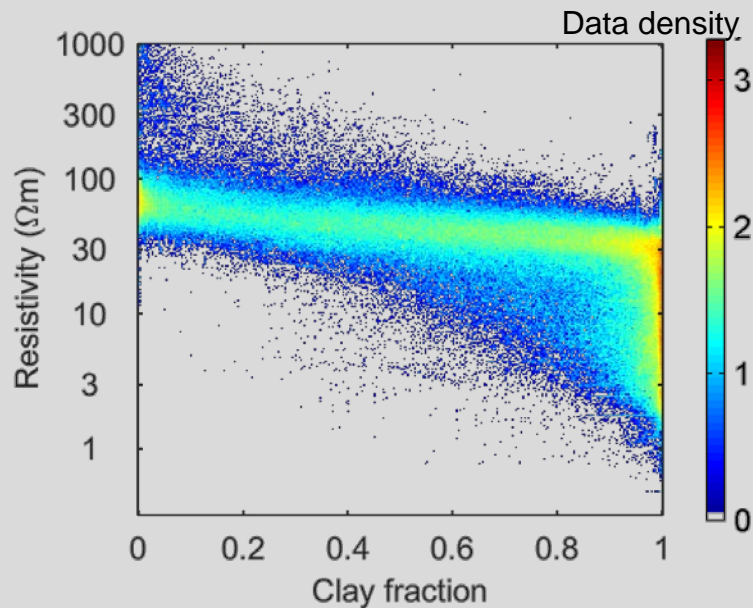
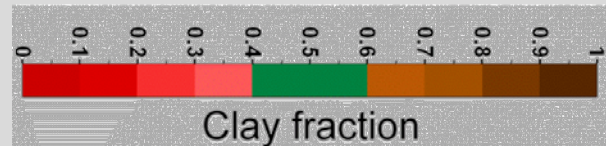
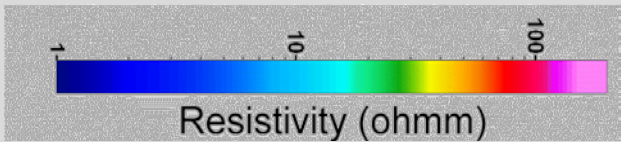
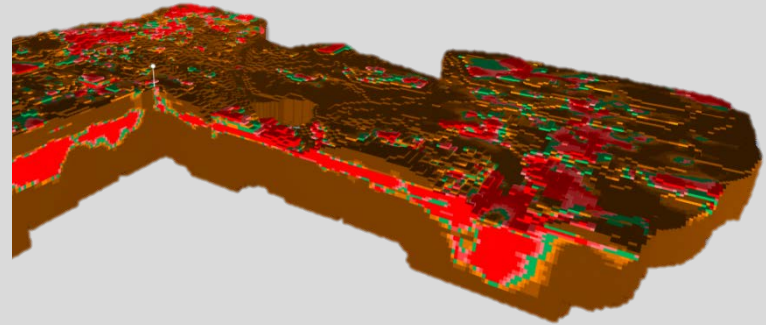
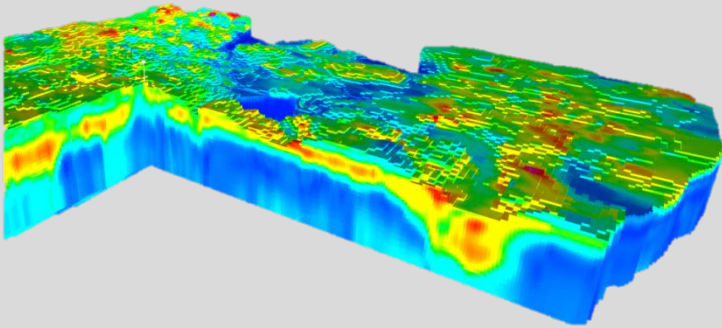
Translate resistivity to clay/sand using lithological logs



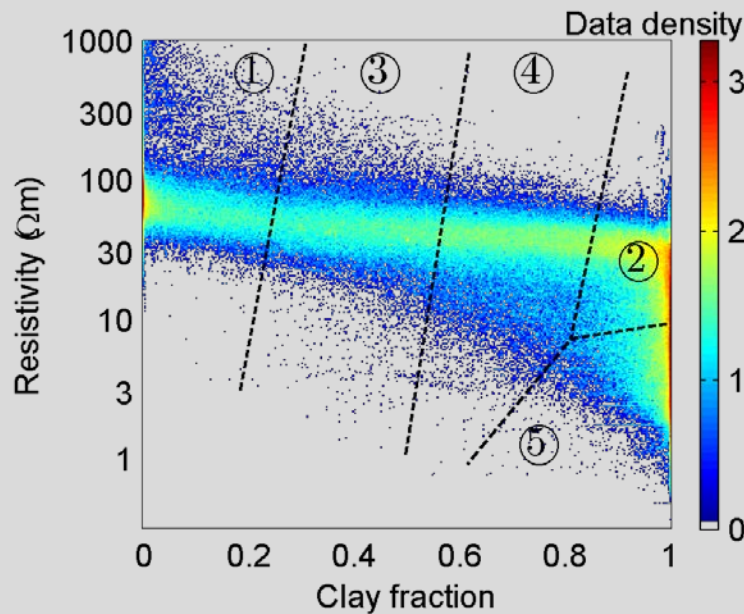
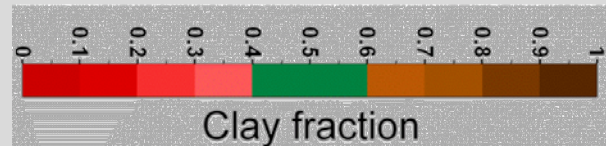
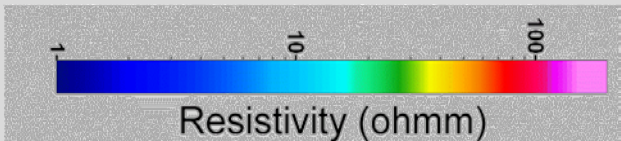
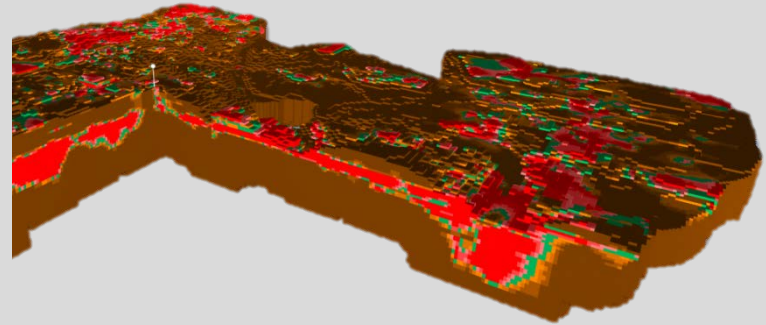
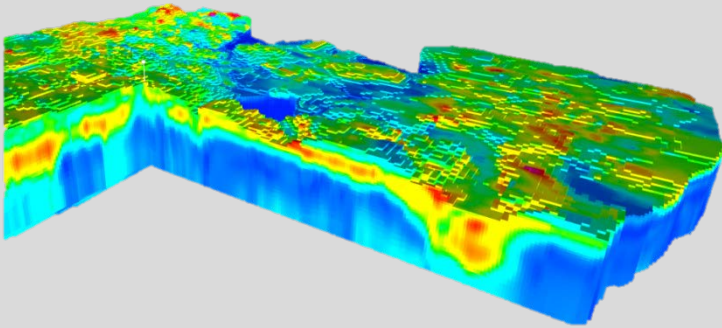
CF-Resistivity clustering



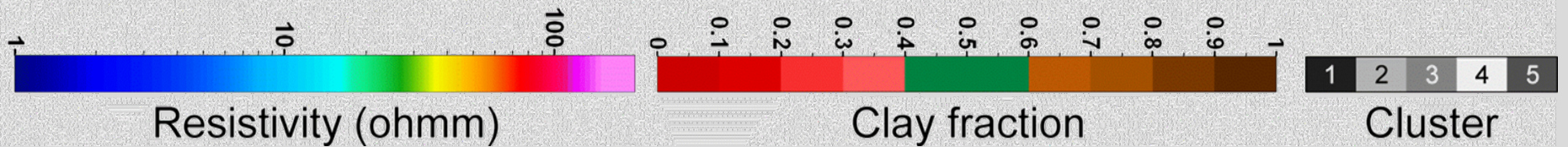
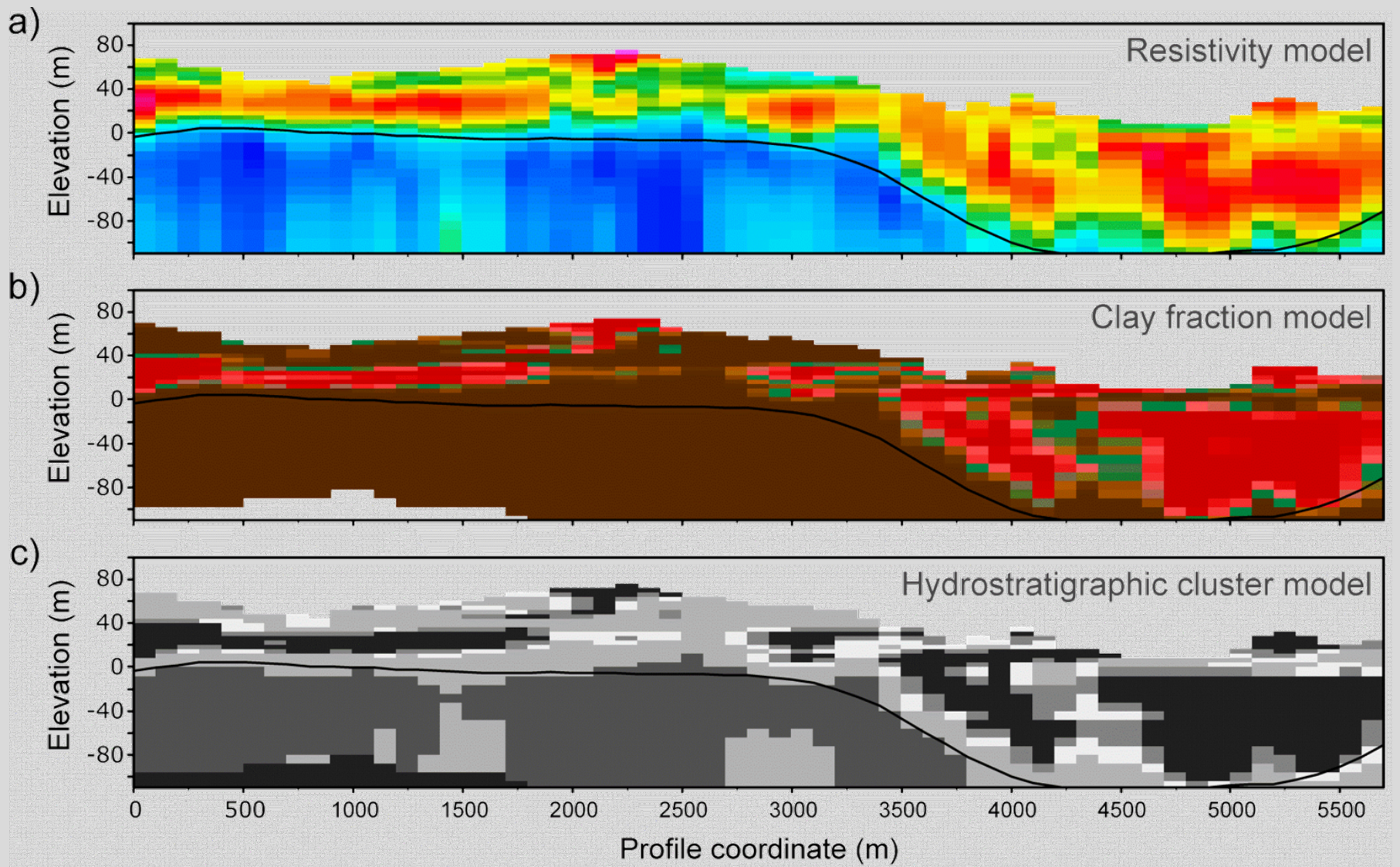
3D cluster model



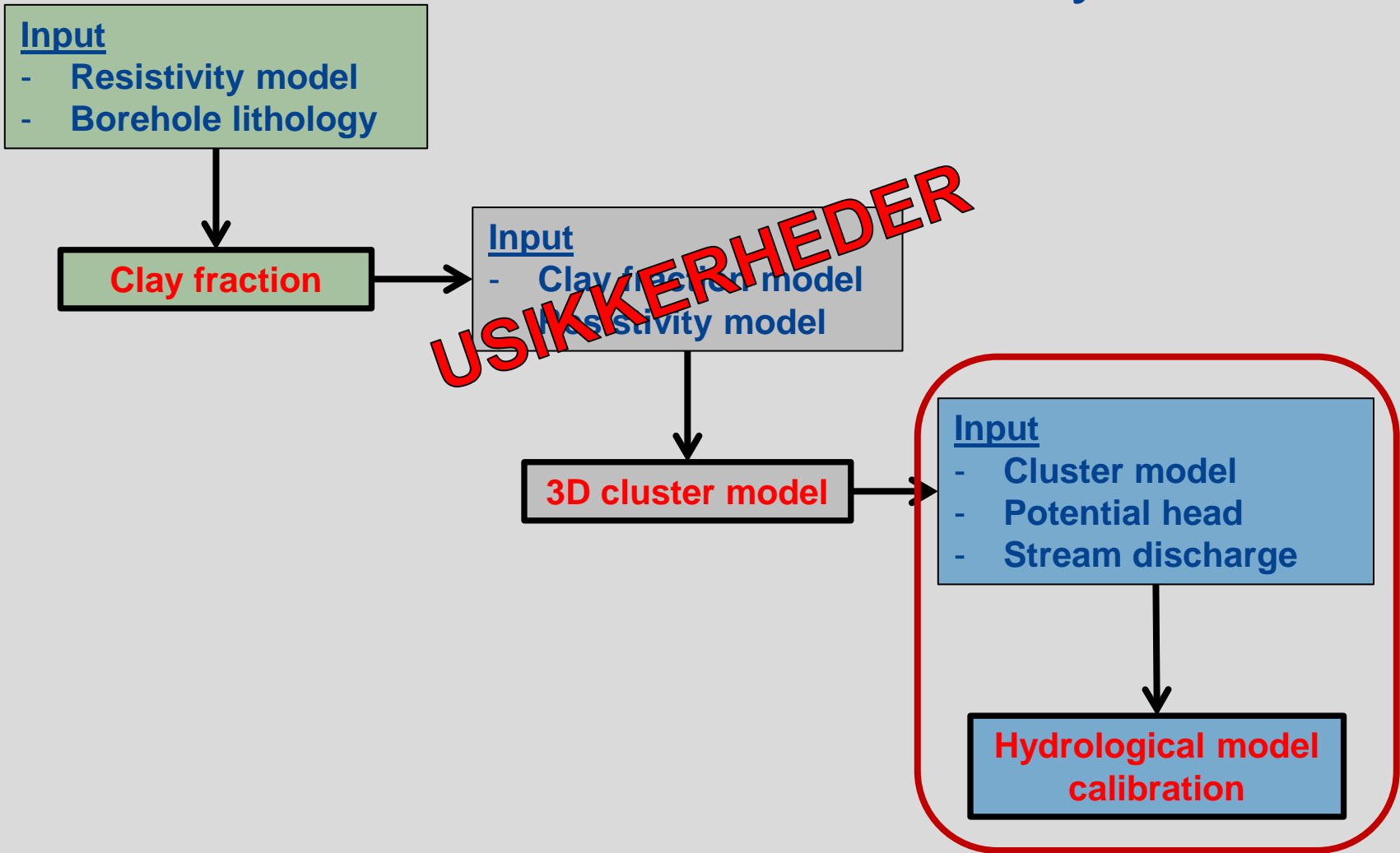
3D cluster model



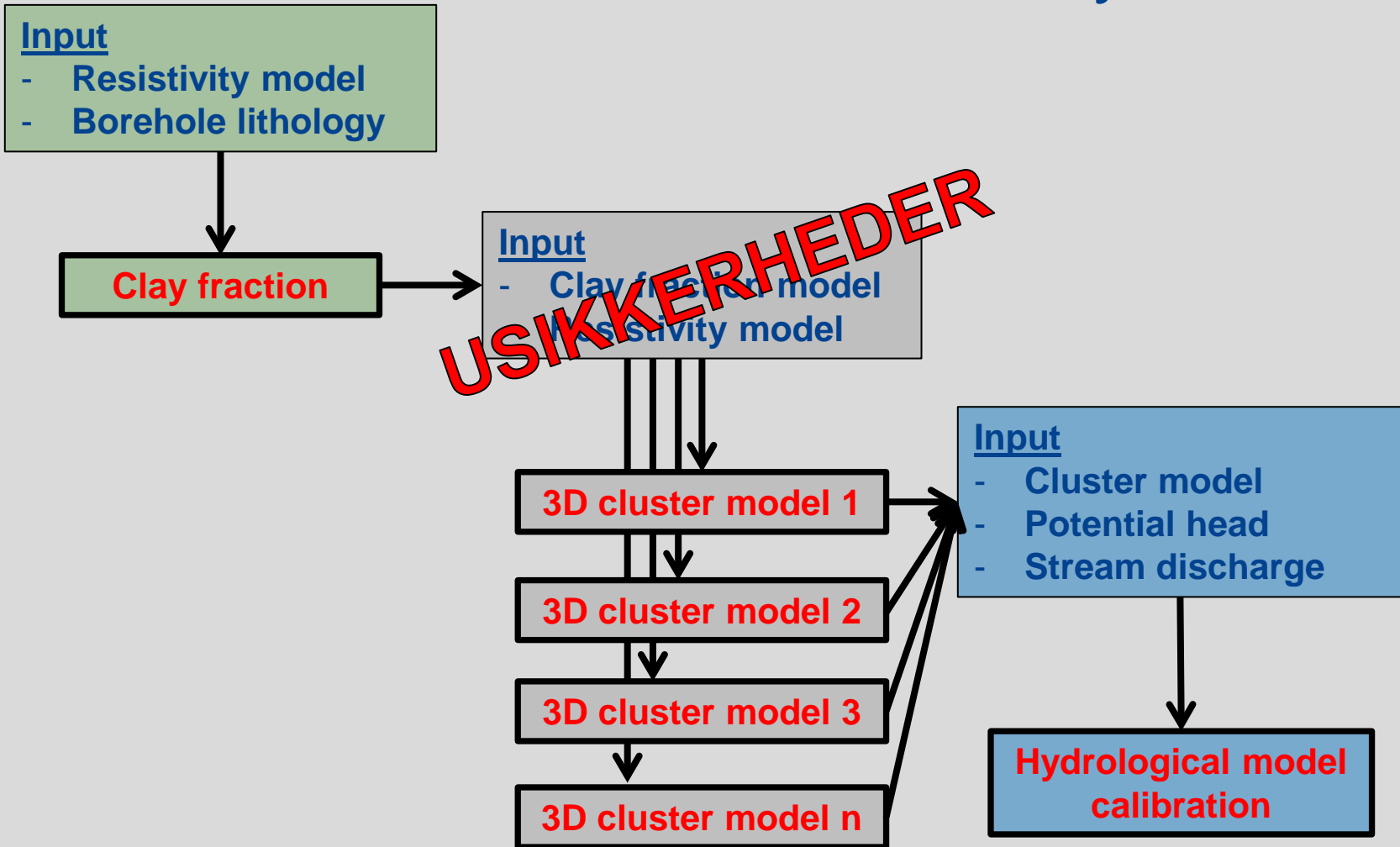
5 clusters udvalgt vha. k-means



CF-Resistivity clustering



CF-Resistivity clustering



Håndtering af usikkerheder på input

- Perturber resistivitet og CF med usikkerheder på felter

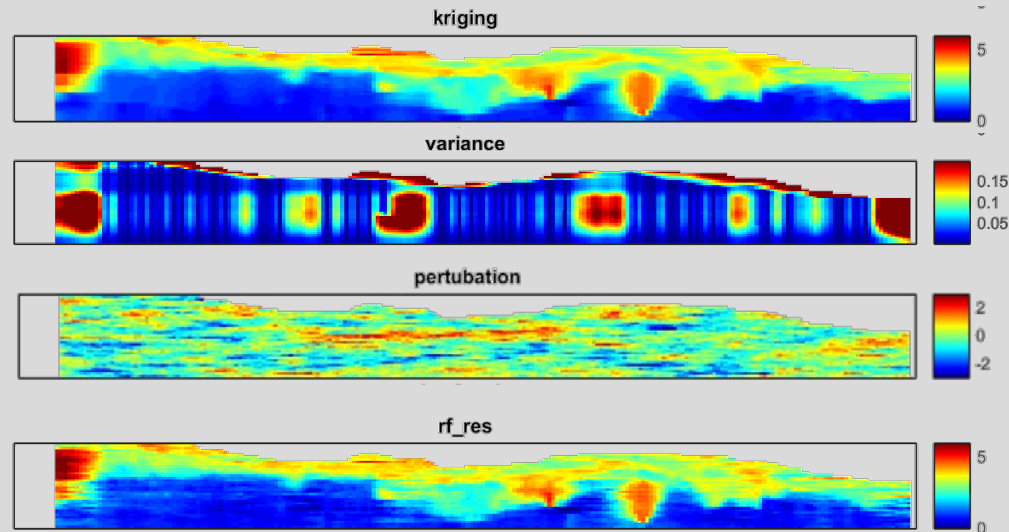
$$X(x) = X'(x) * \sigma(x) + \mu(x)$$

μ : mean

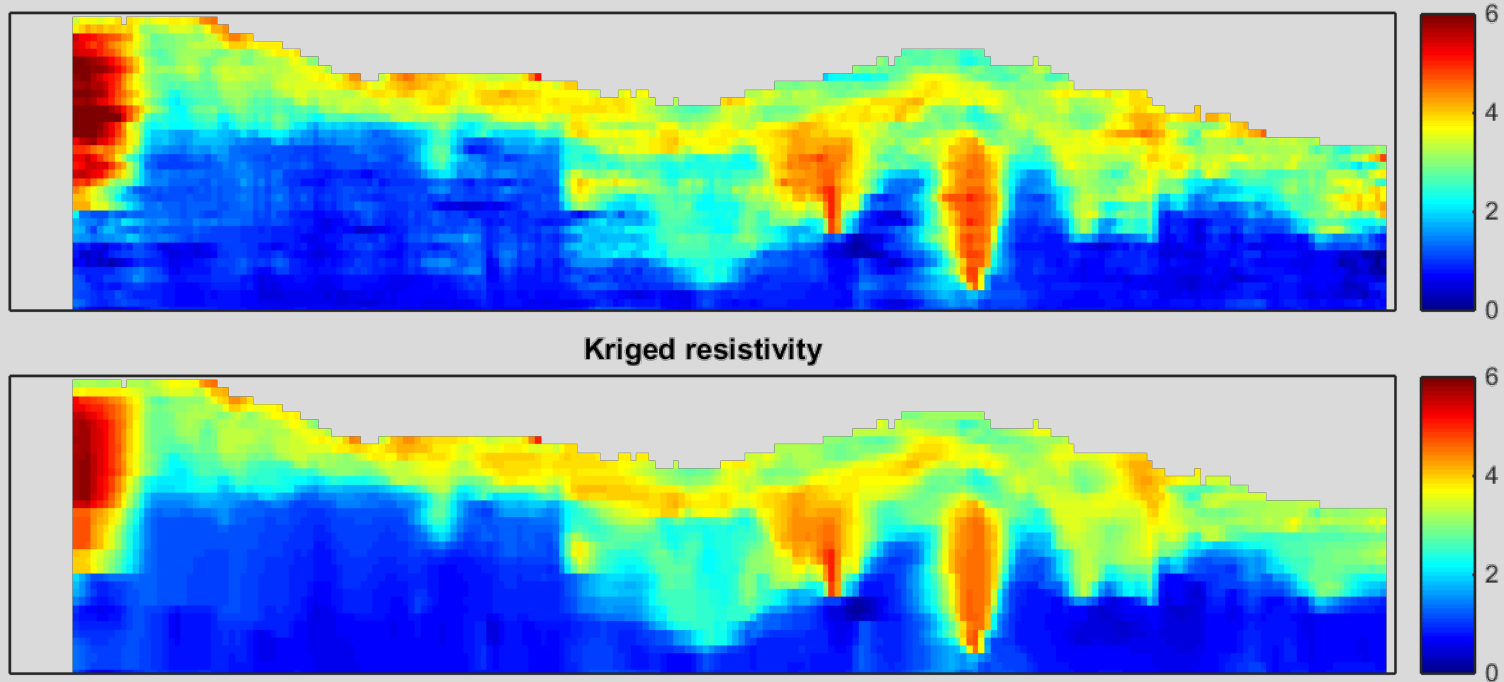
σ : standard deviation

X' : stationary random field

X : non-stationary perturbed field

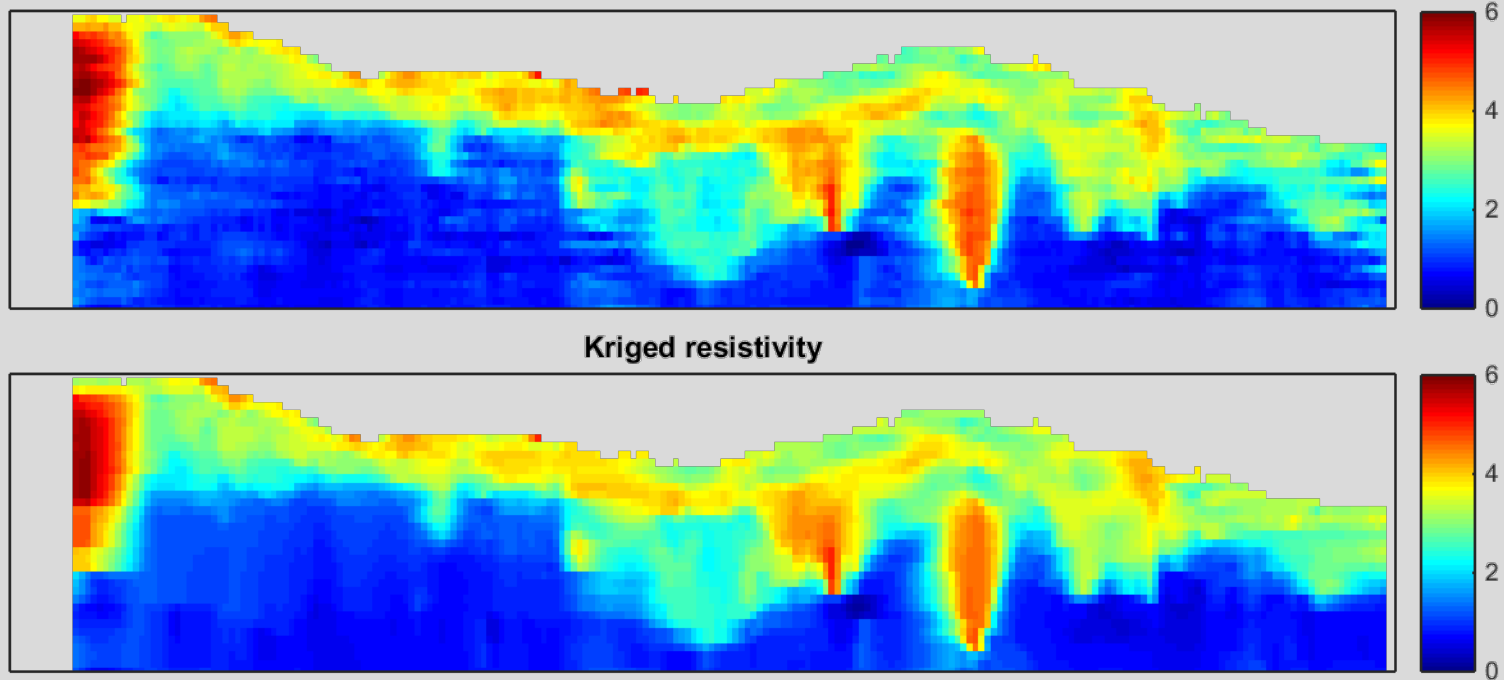


Usikkerheder i resistivitet



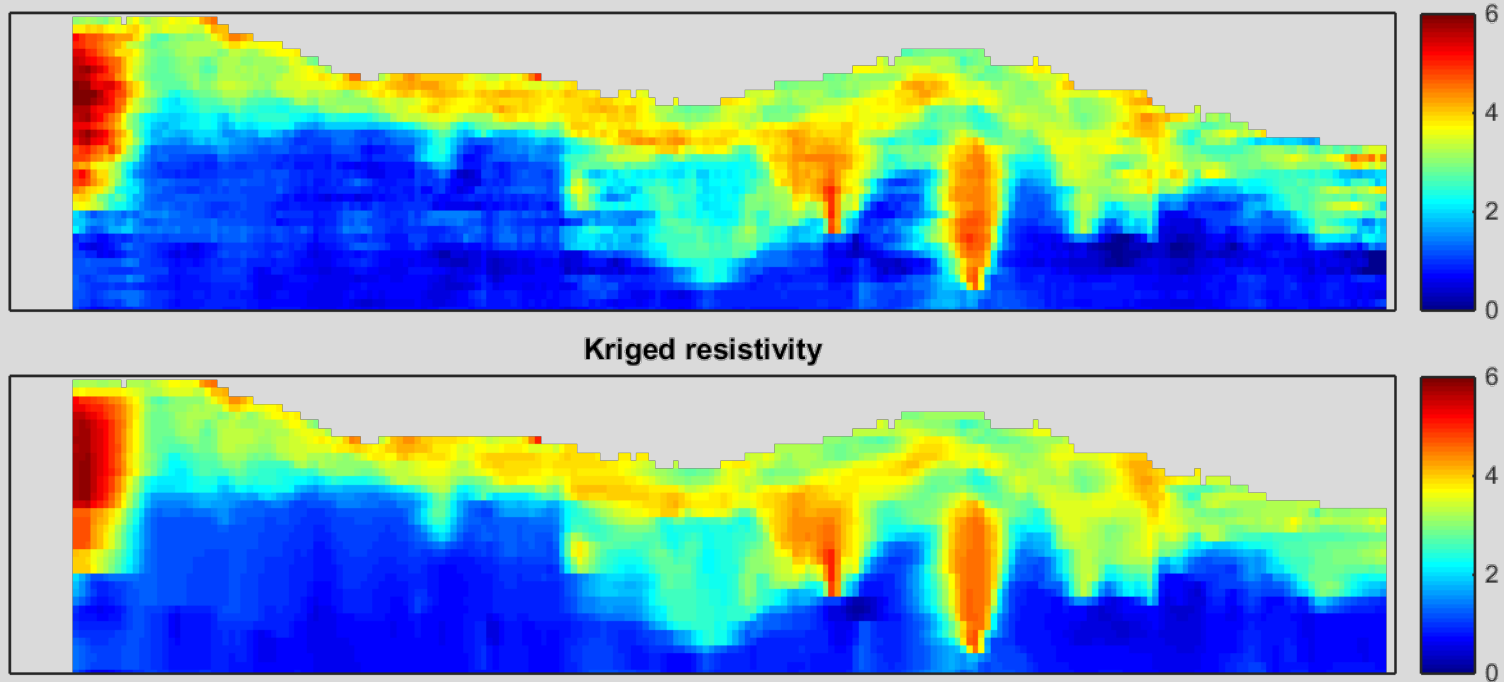
Kriged resistivity

Usikkerheder i resistivitet



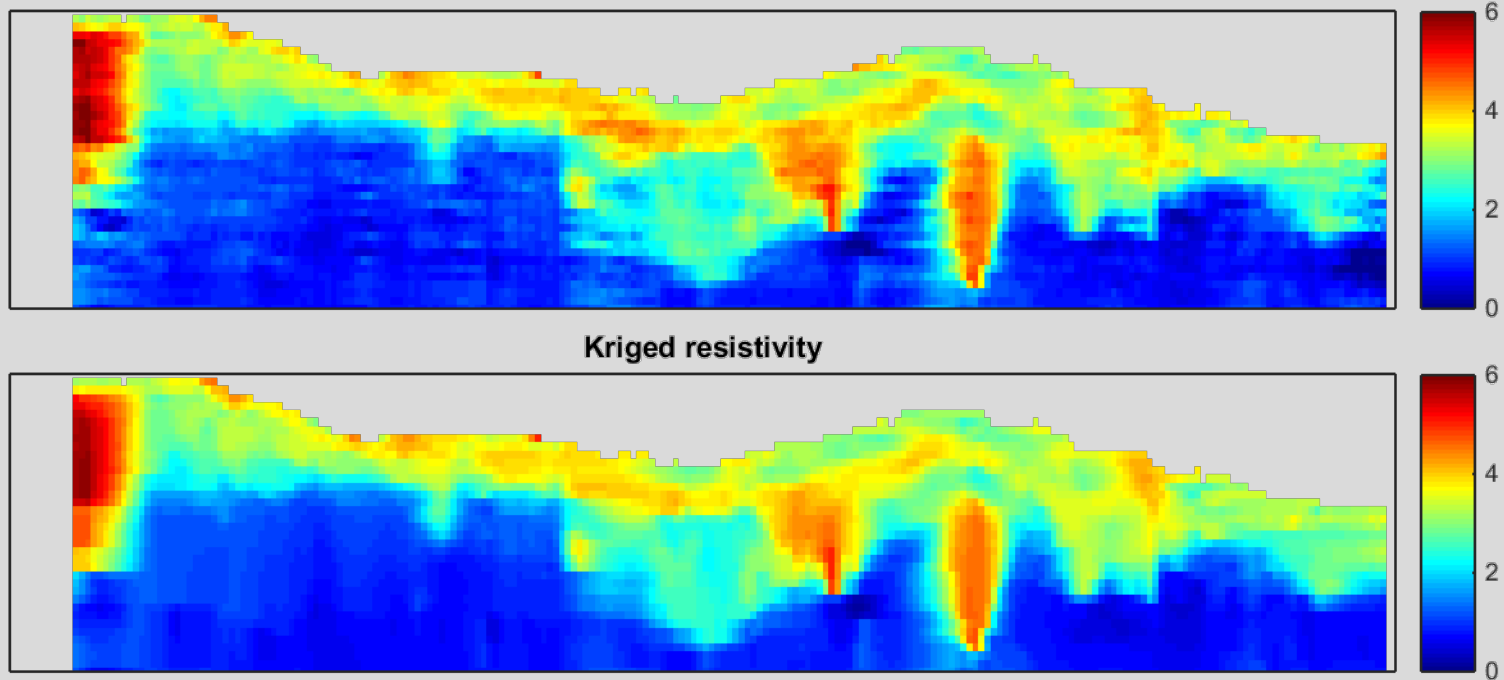
Kriged resistivity

Usikkerheder i resistivitet



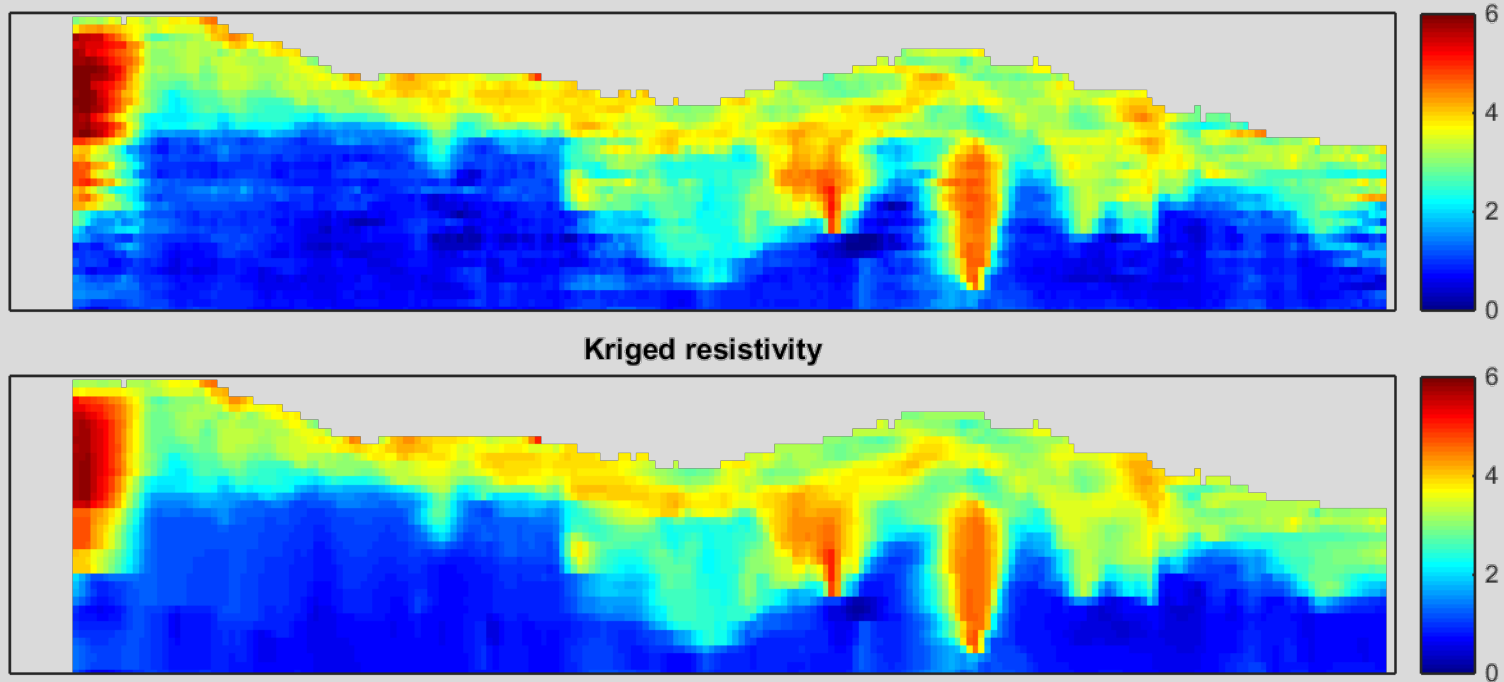
Kriged resistivity

Usikkerheder i resistivitet

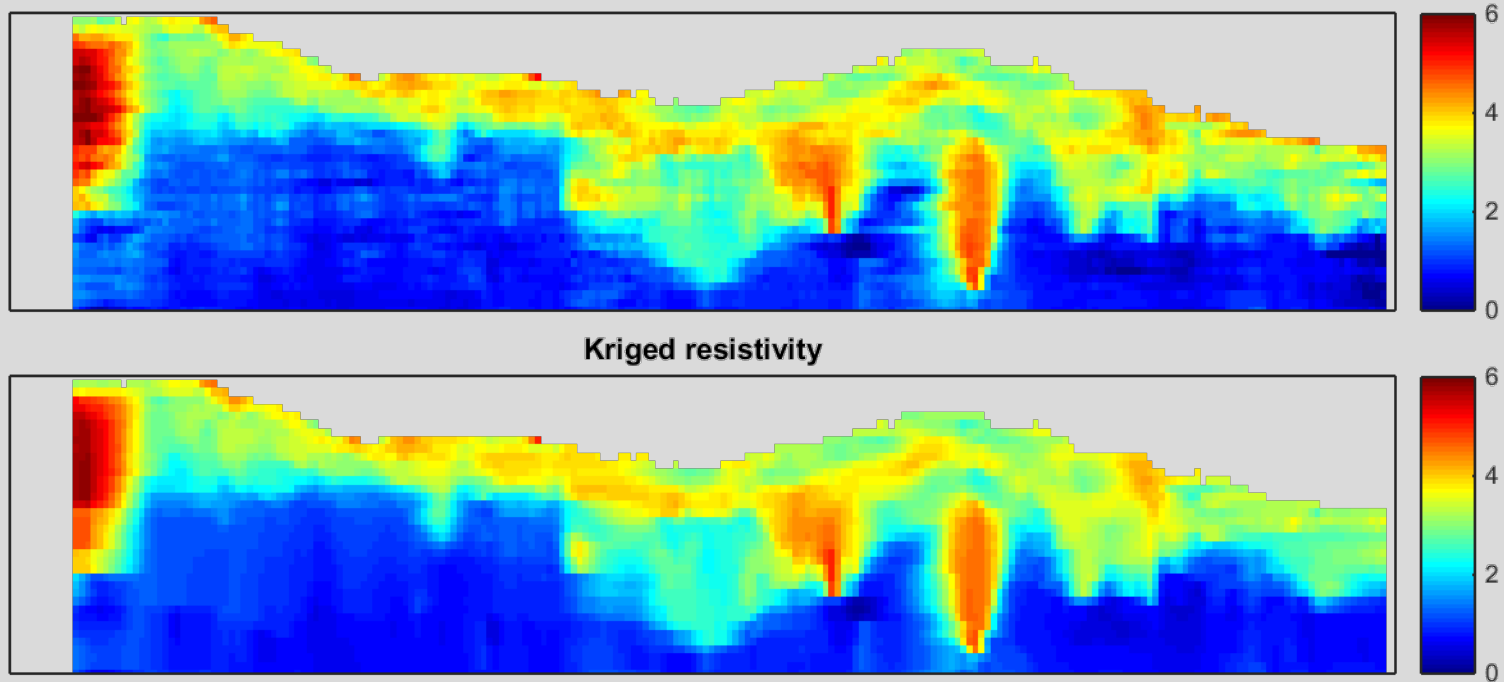


Kriged resistivity

Usikkerheder i resistivitet

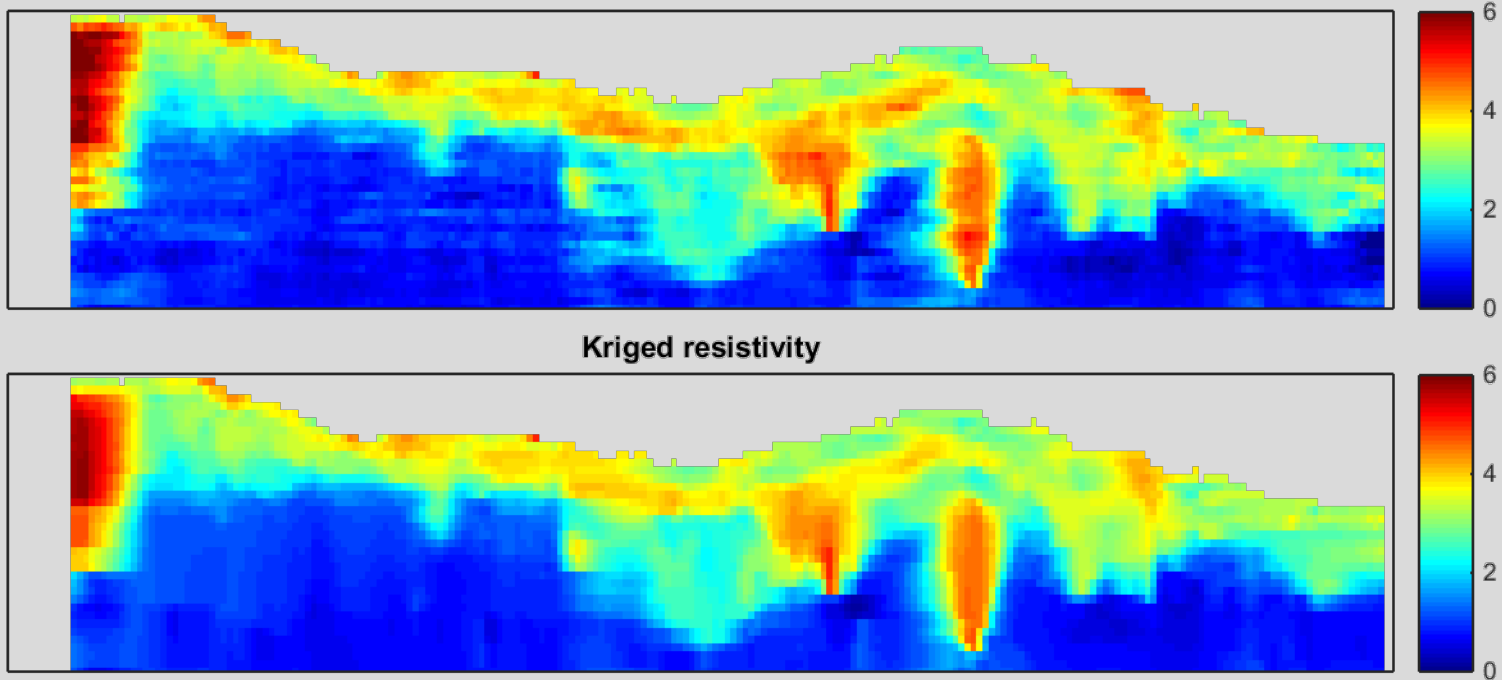


Usikkerheder i resistivitet



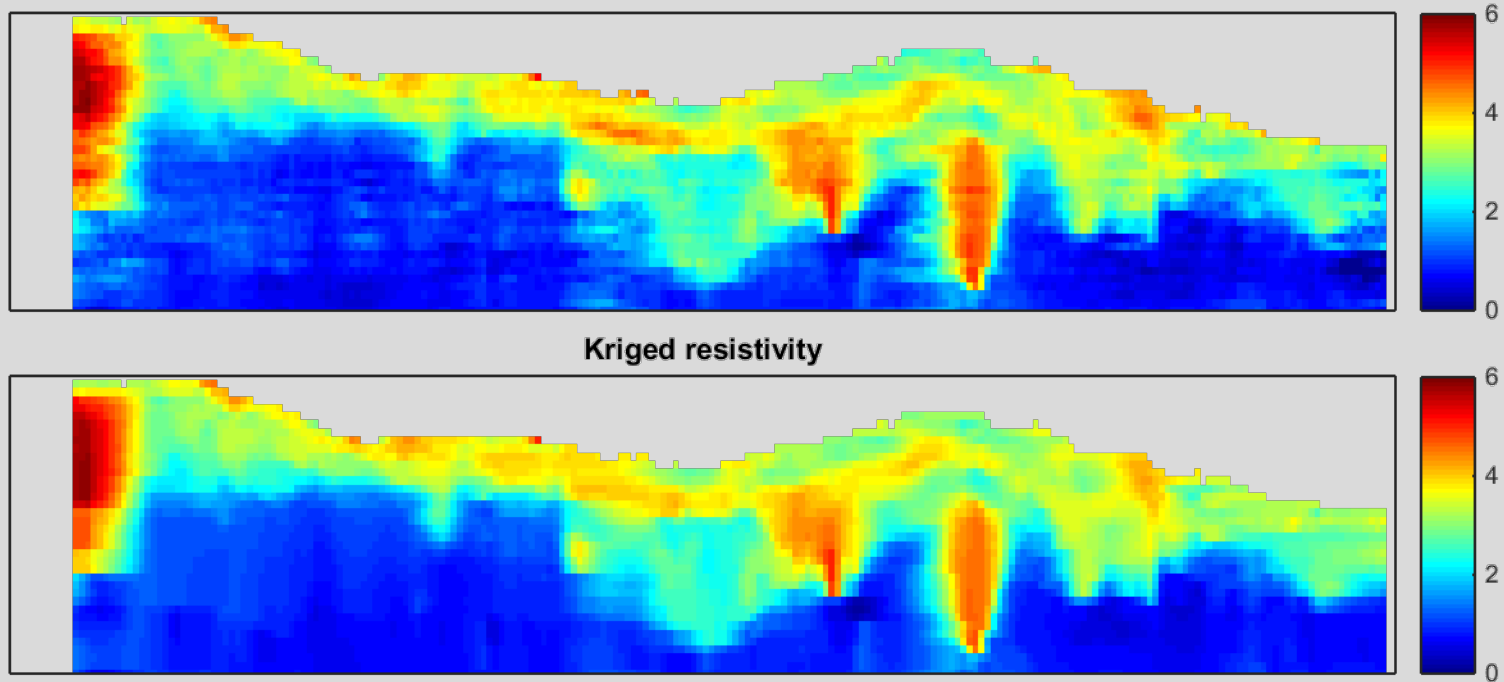
Kriged resistivity

Usikkerheder i resistivitet



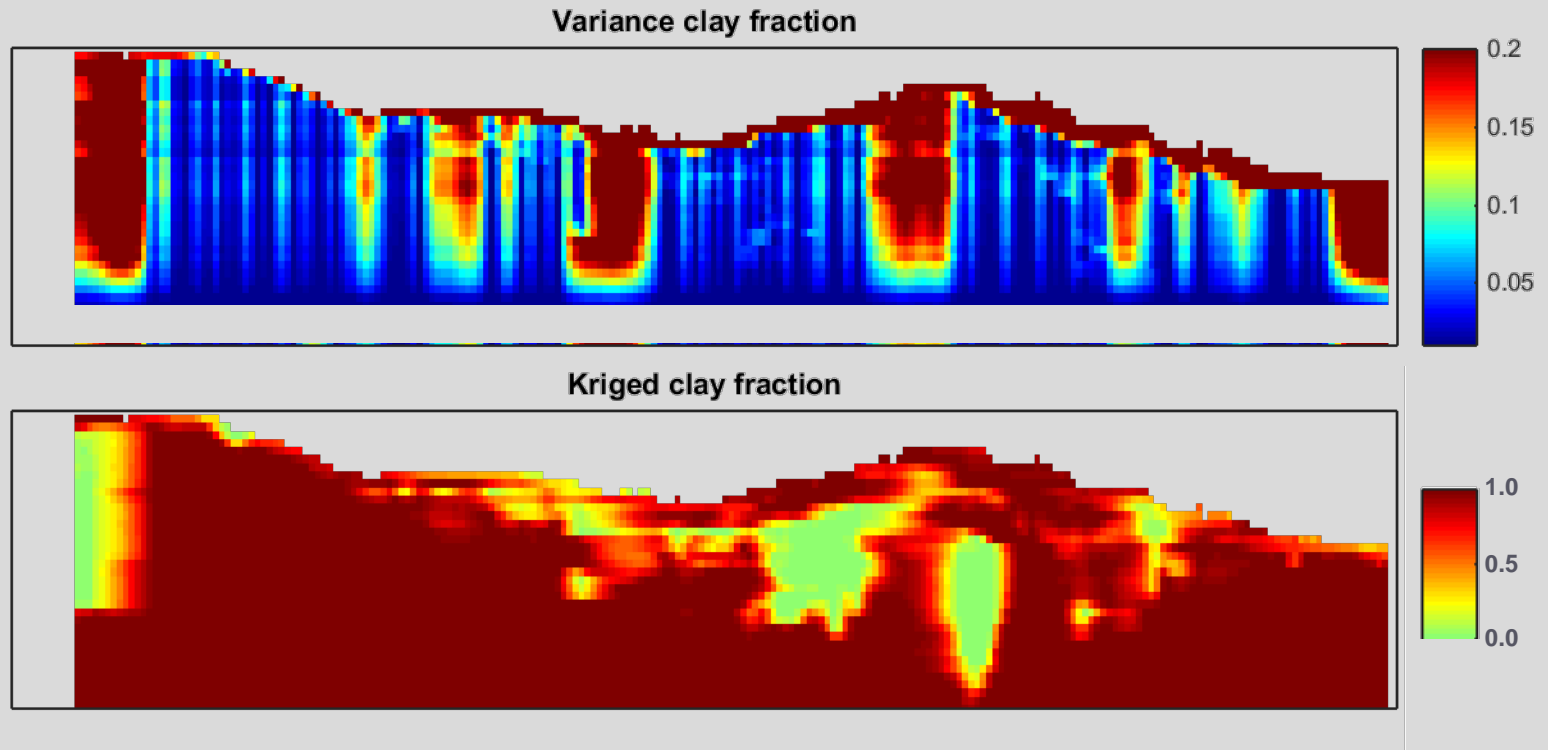
Kriged resistivity

Usikkerheder i resistivitet



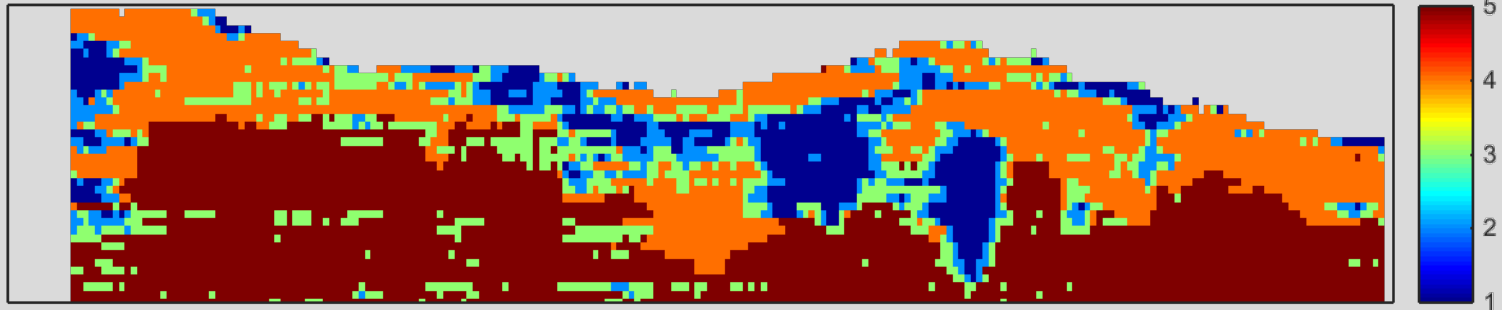
Kriged resistivity

Usikkerheder i CF

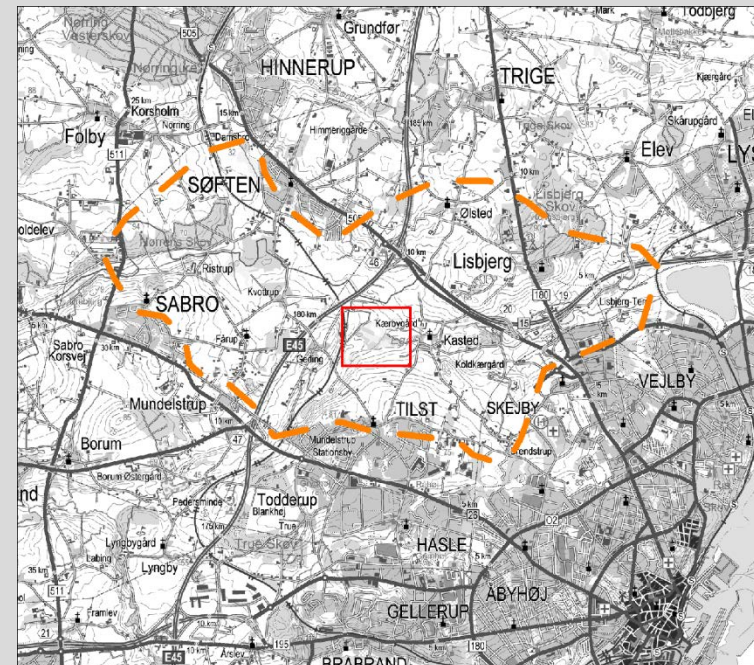
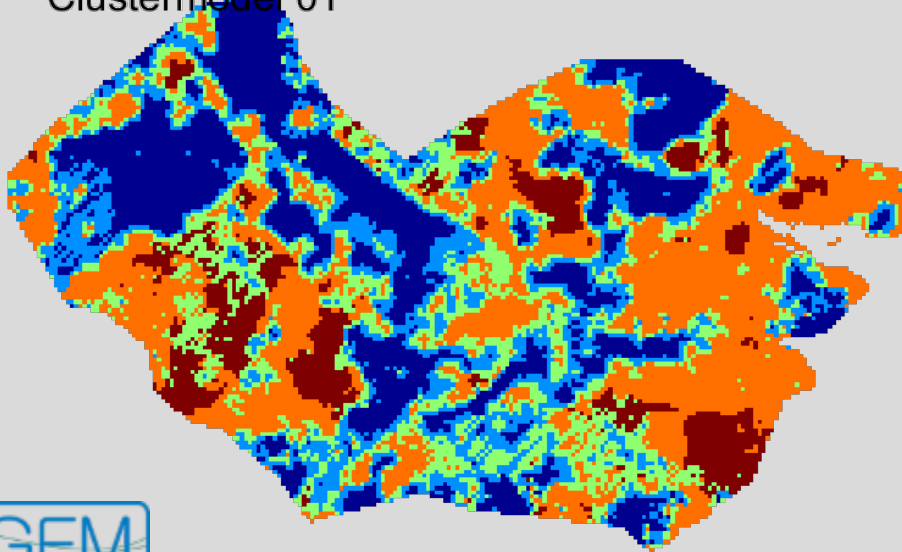


Usikkerheder i Cluster Modeller

Clustermodel 01

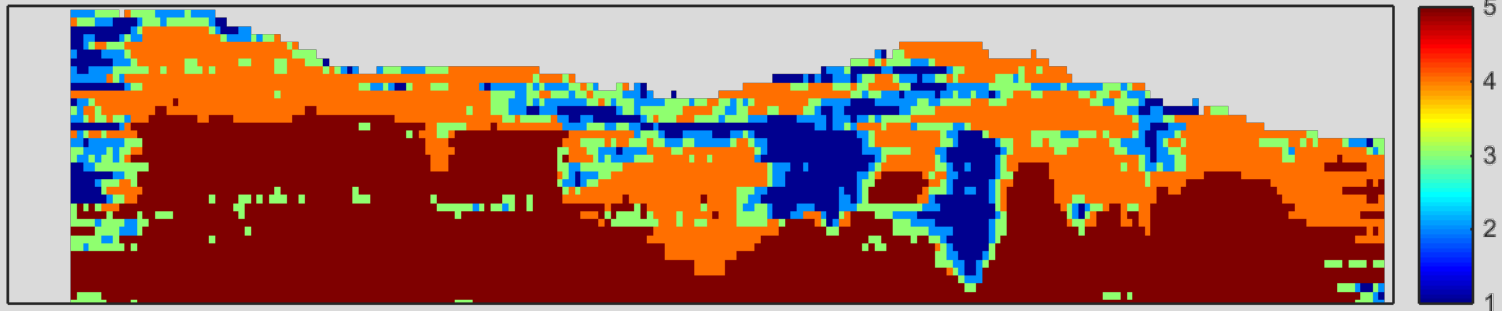


Clustermodel 01

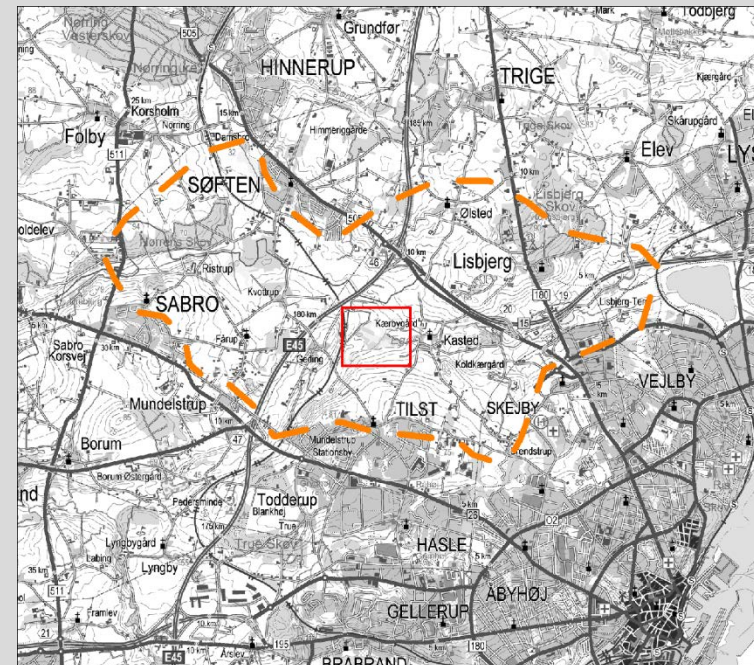
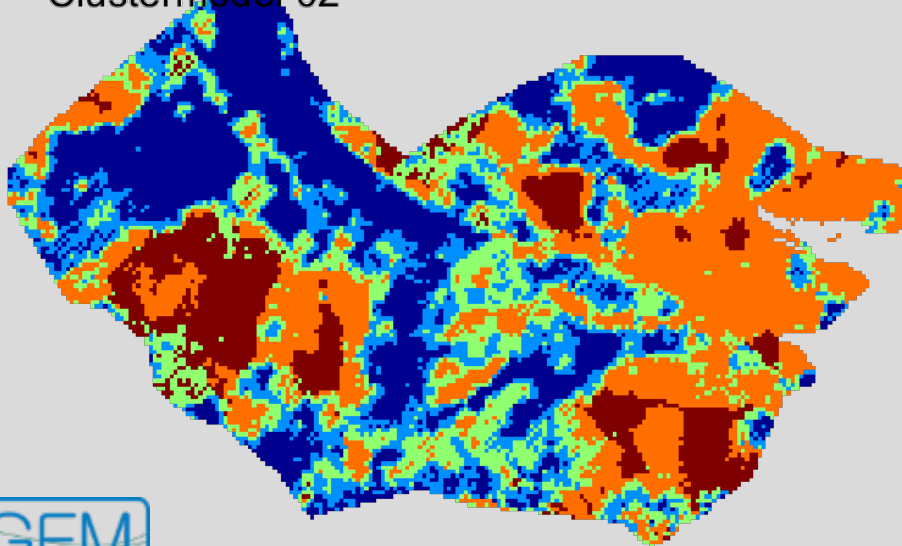


Usikkerheder i Cluster Modeller

Clustermodel 02

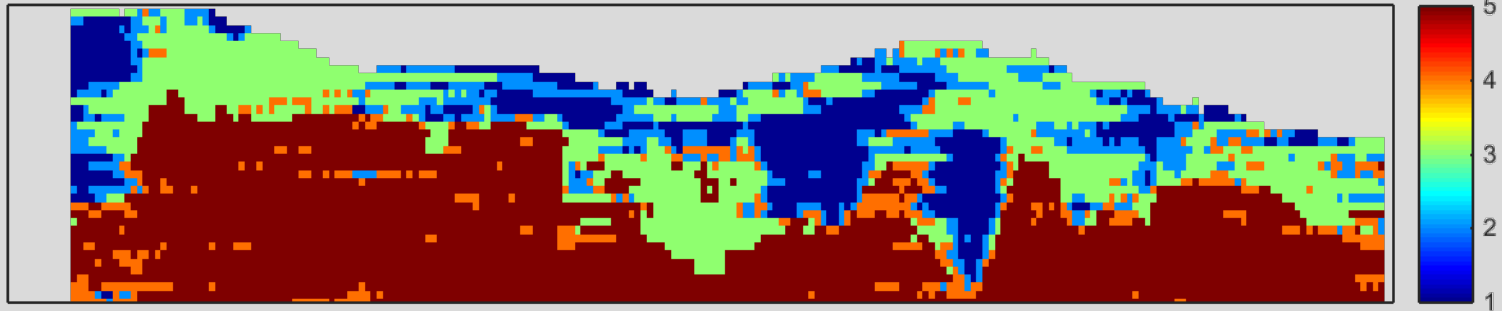


Clustermodel 02

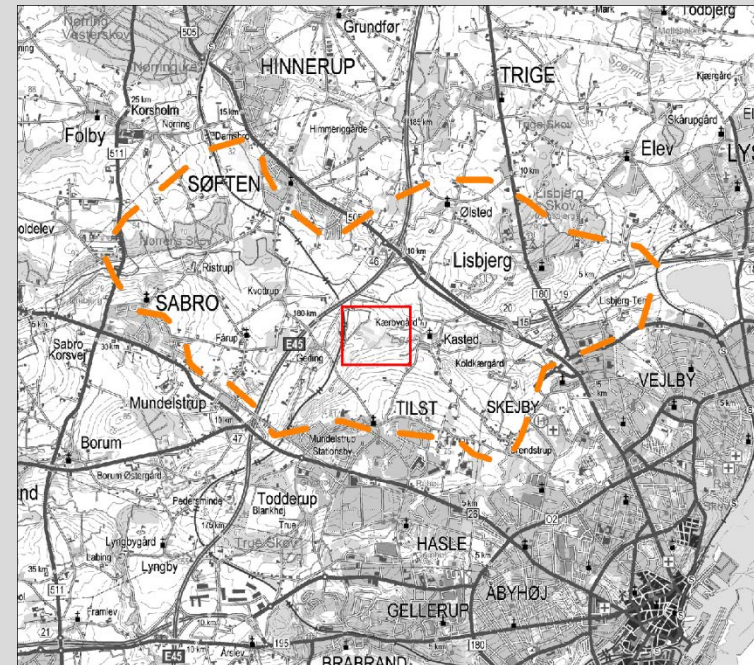
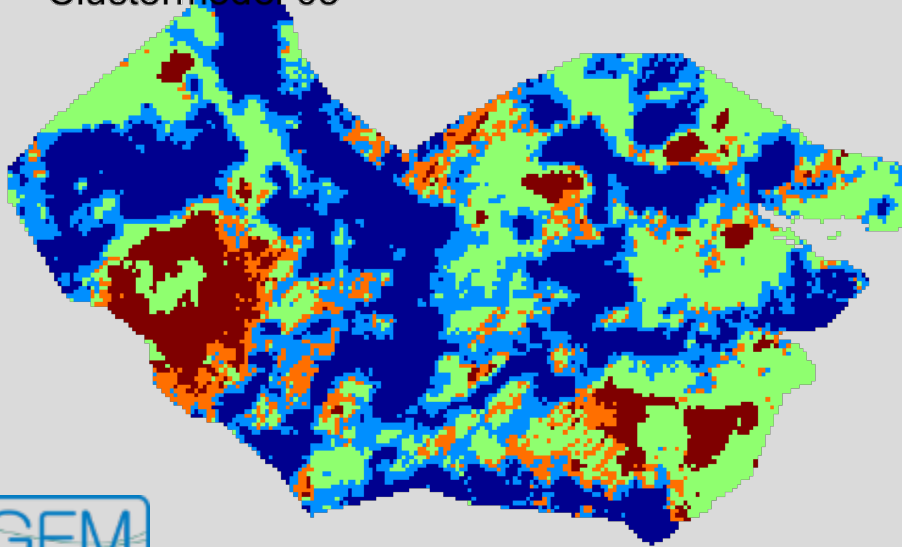


Usikkerheder i Cluster Modeller

Clustermodel 03

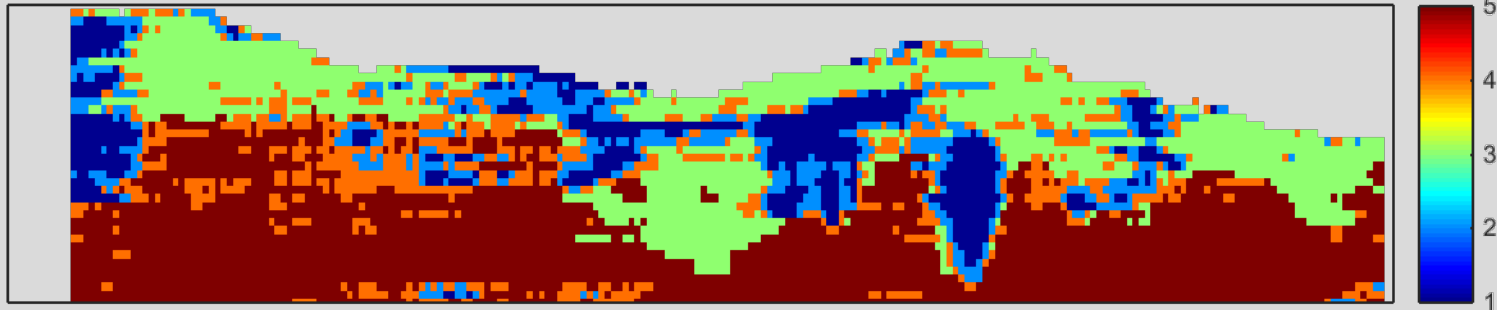


Clustermodel 03

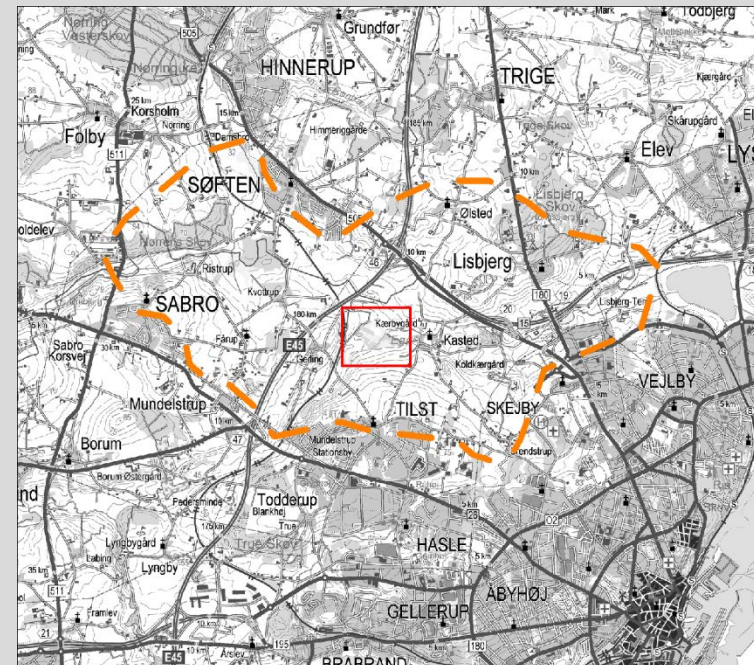
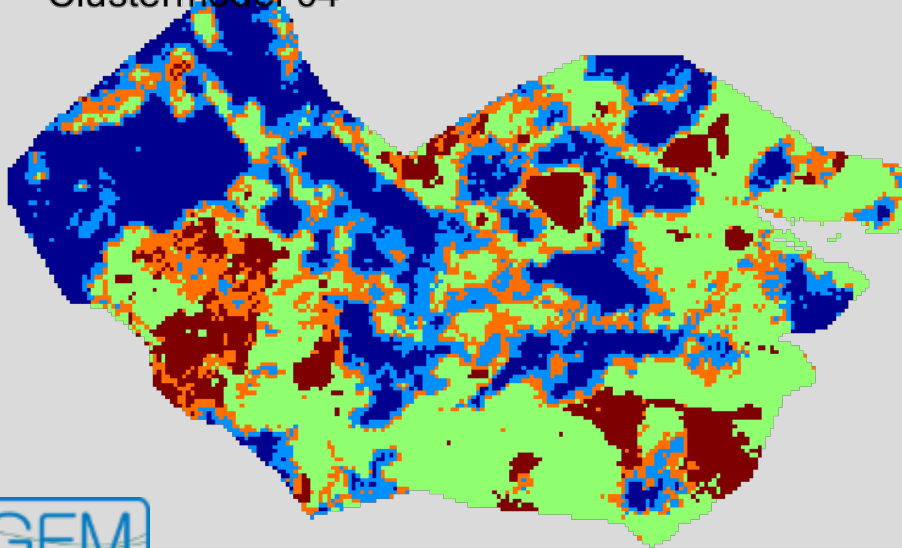


Usikkerheder i Cluster Modeller

Clustermodel 04

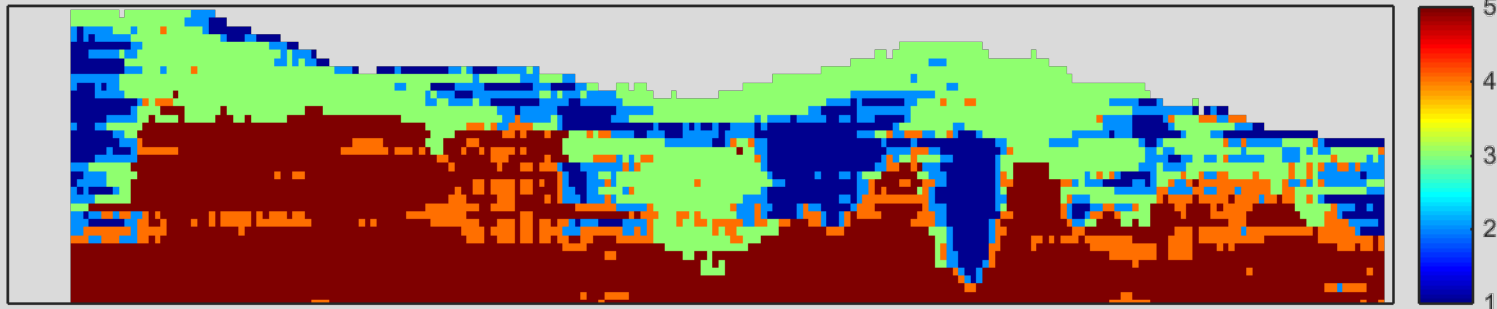


Clustermodel 04

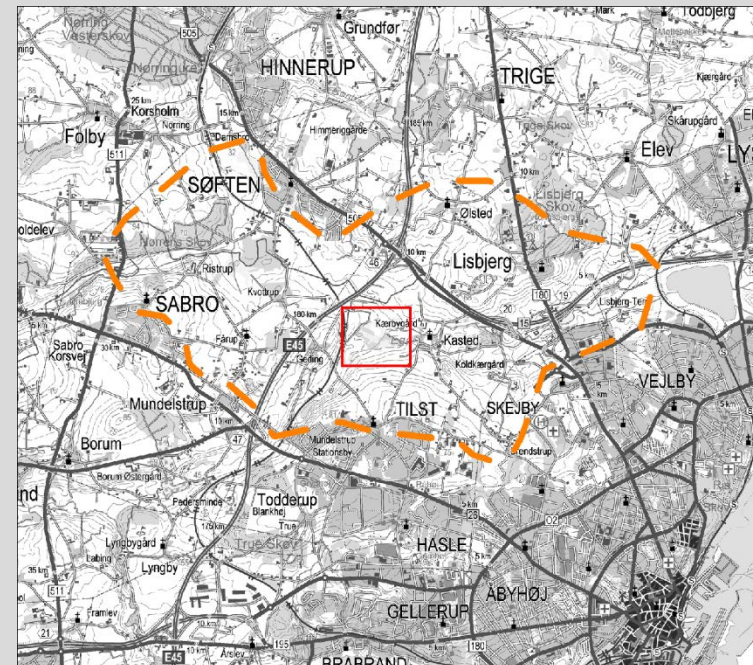
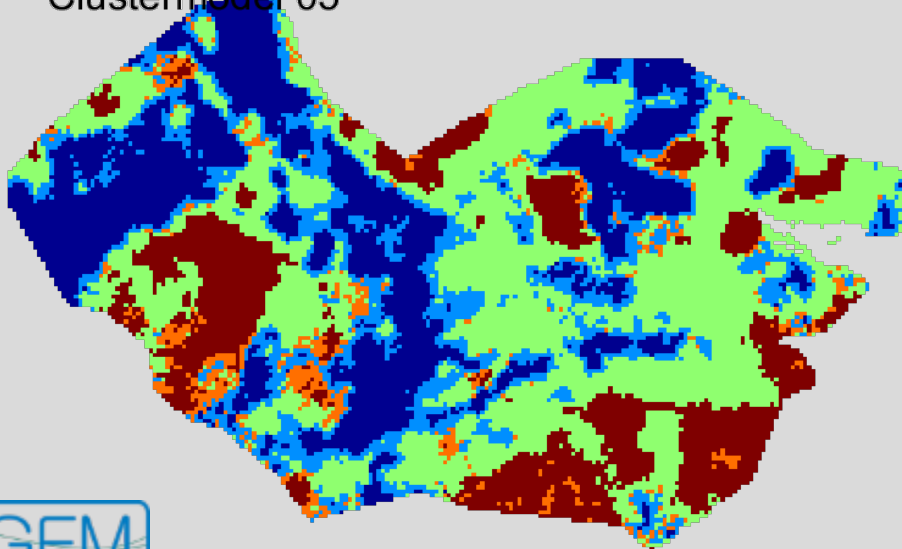


Usikkerheder i Cluster Modeller

Clustermodel 05

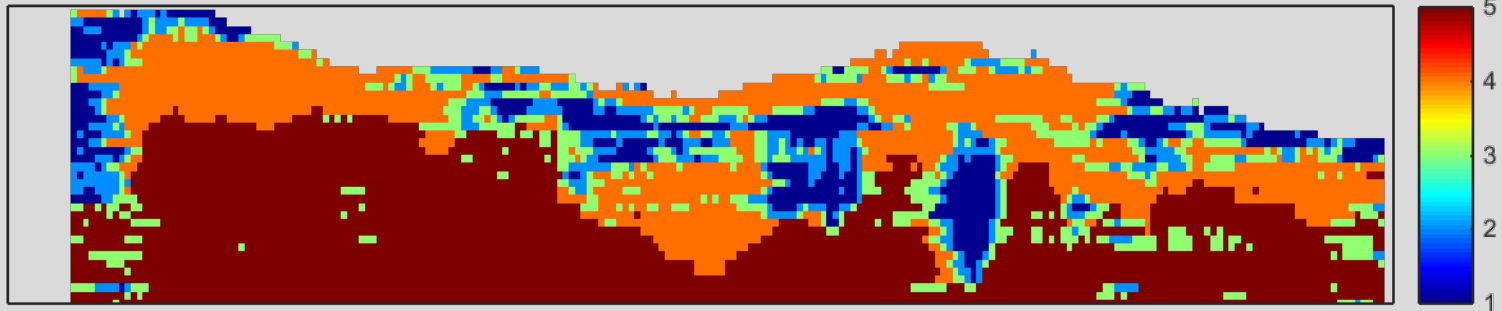


Clustermodel 05

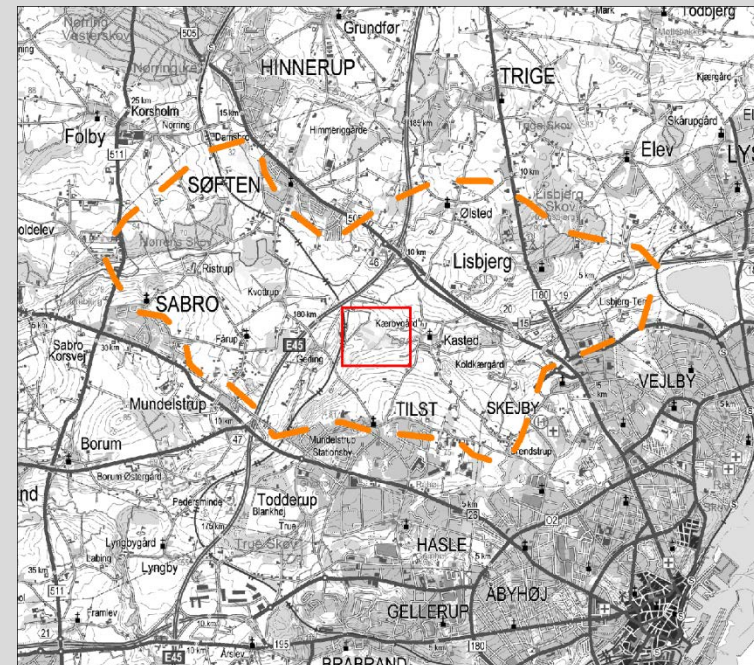
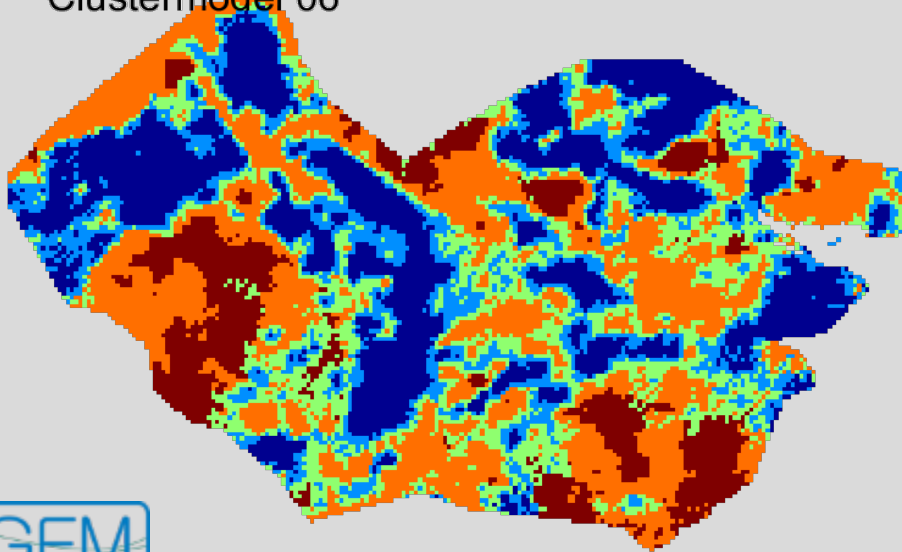


Usikkerheder i Cluster Modeller

Clustermodel 06

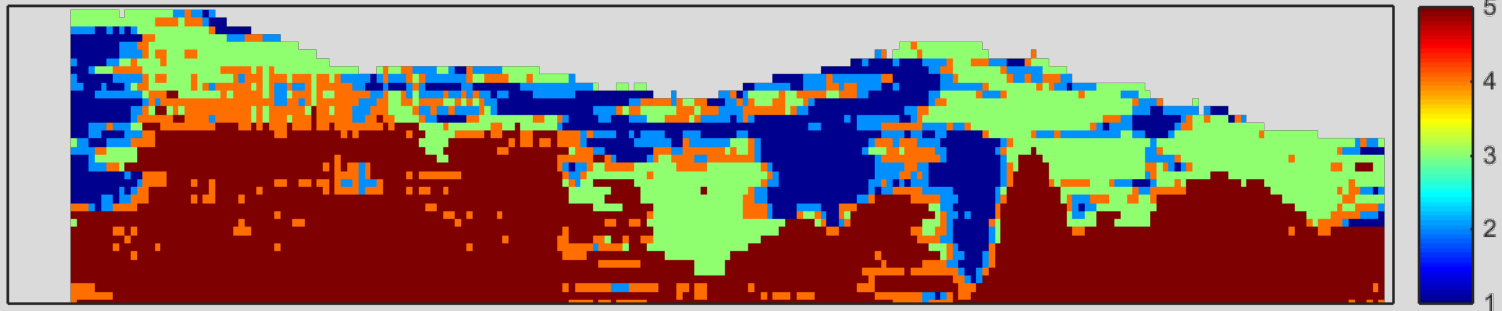


Clustermodel 06

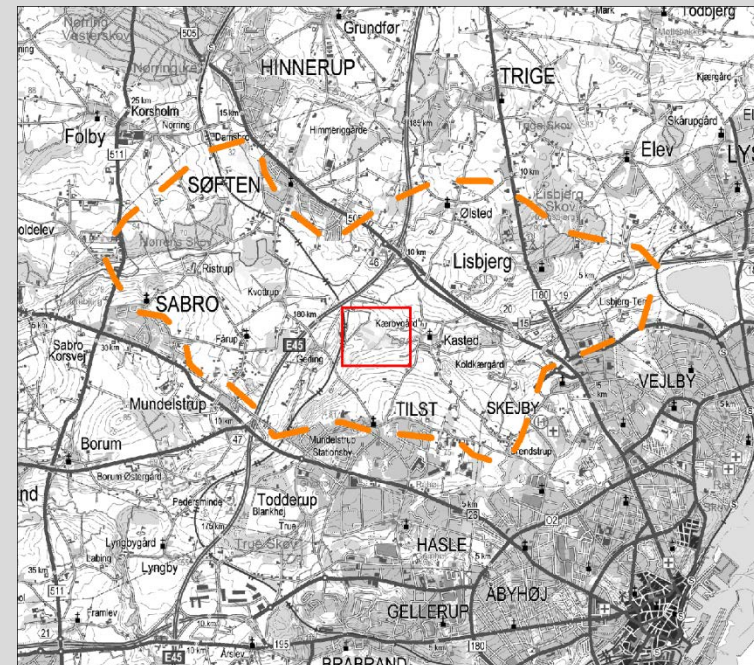
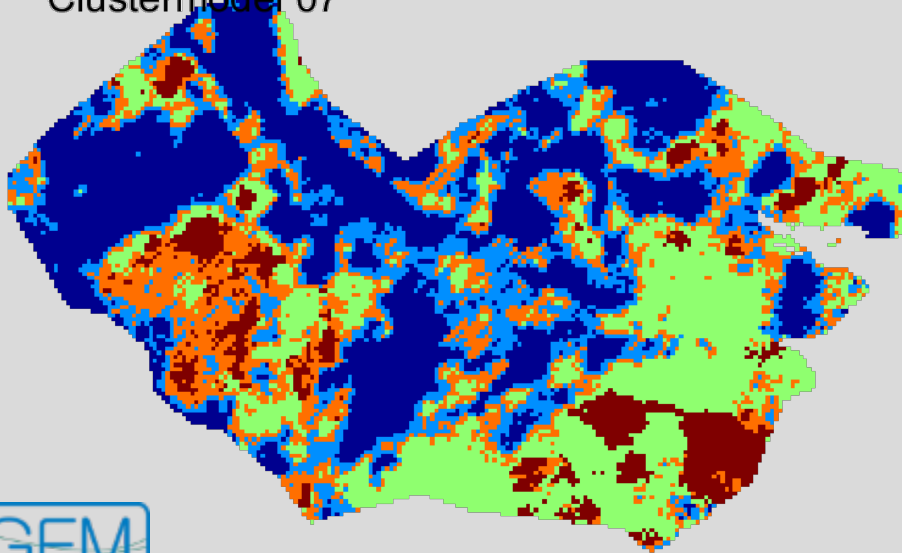


Usikkerheder i Cluster Modeller

Clustermodel 07

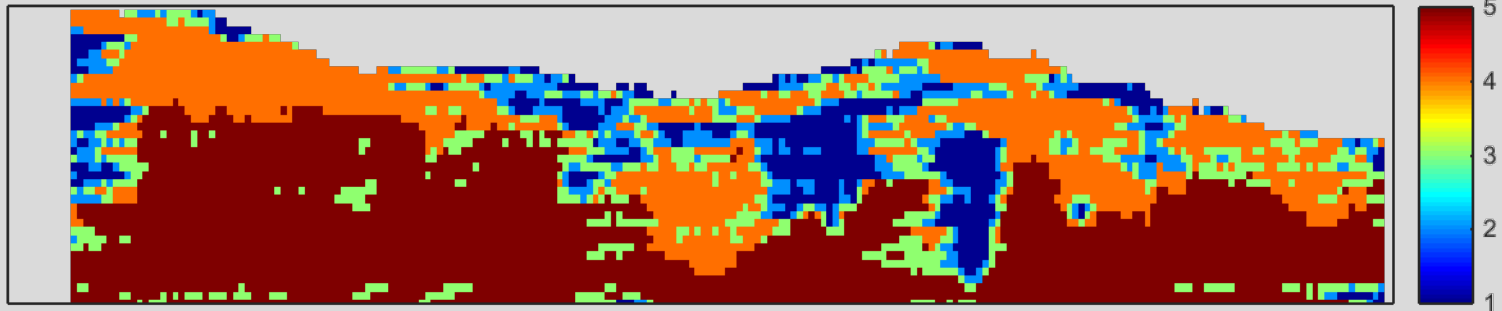


Clustermodel 07

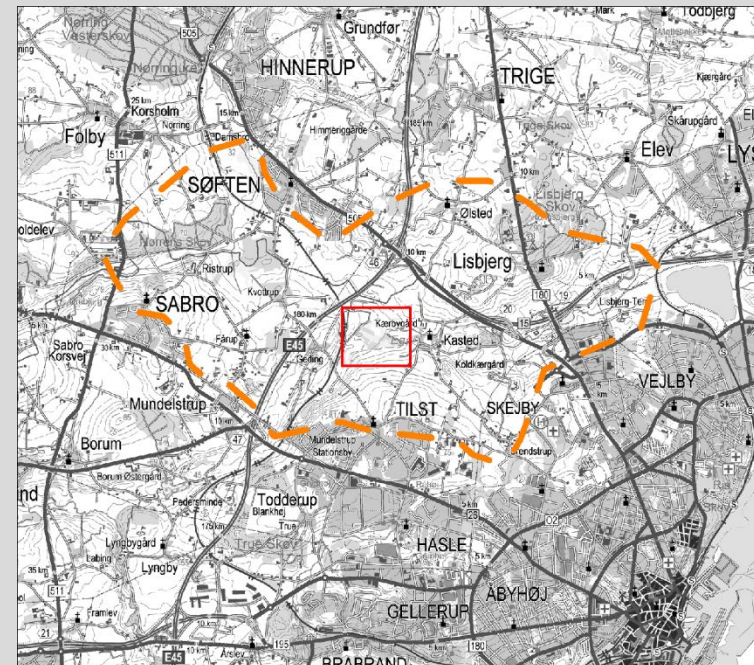
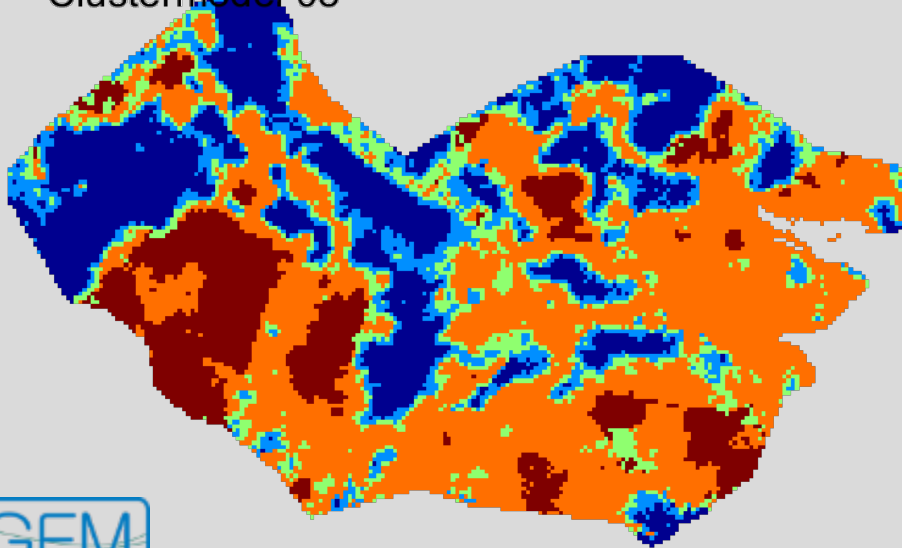


Usikkerheder i Cluster Modeller

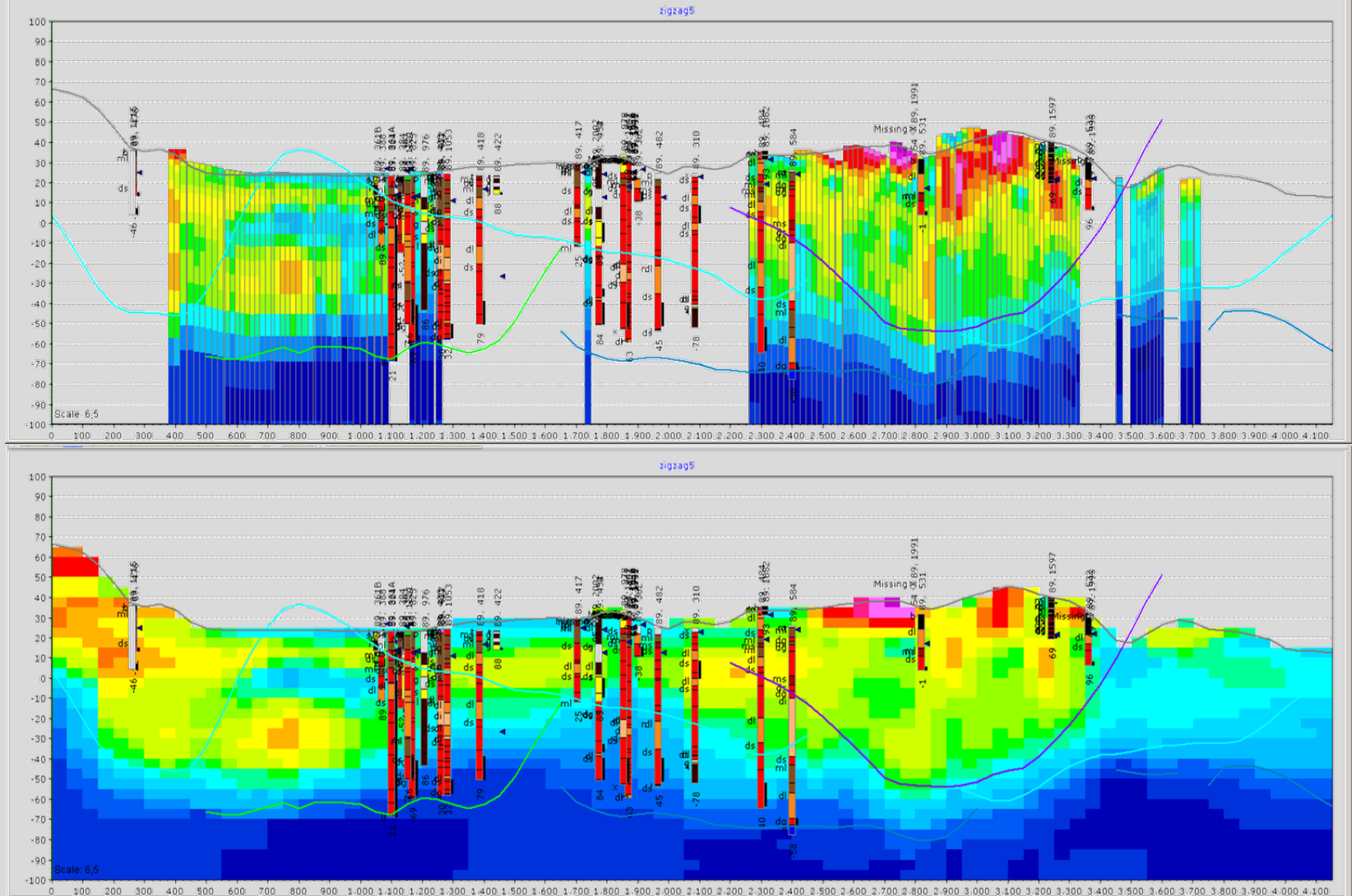
Clustermodel 08



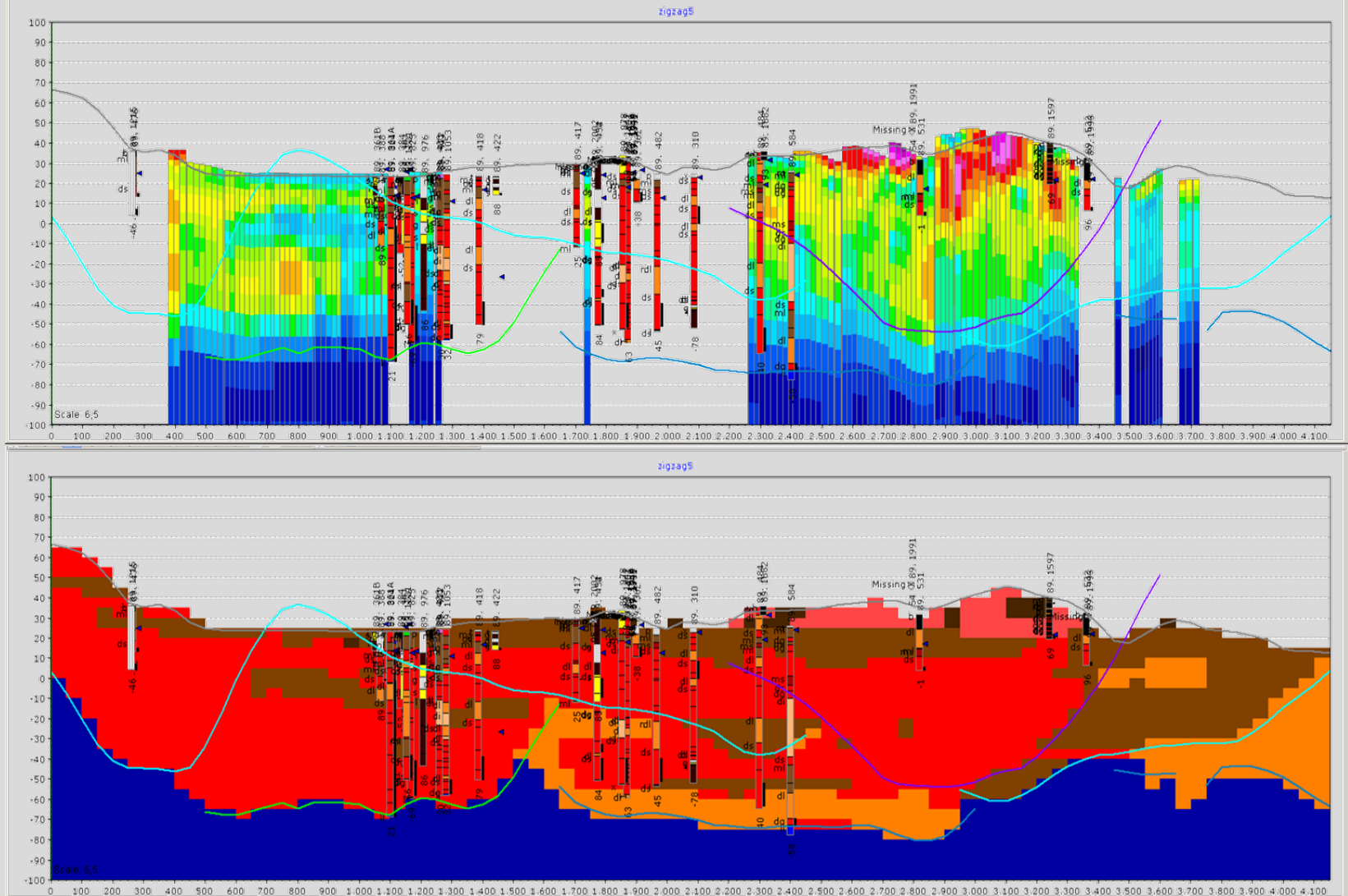
Clustermodel 08



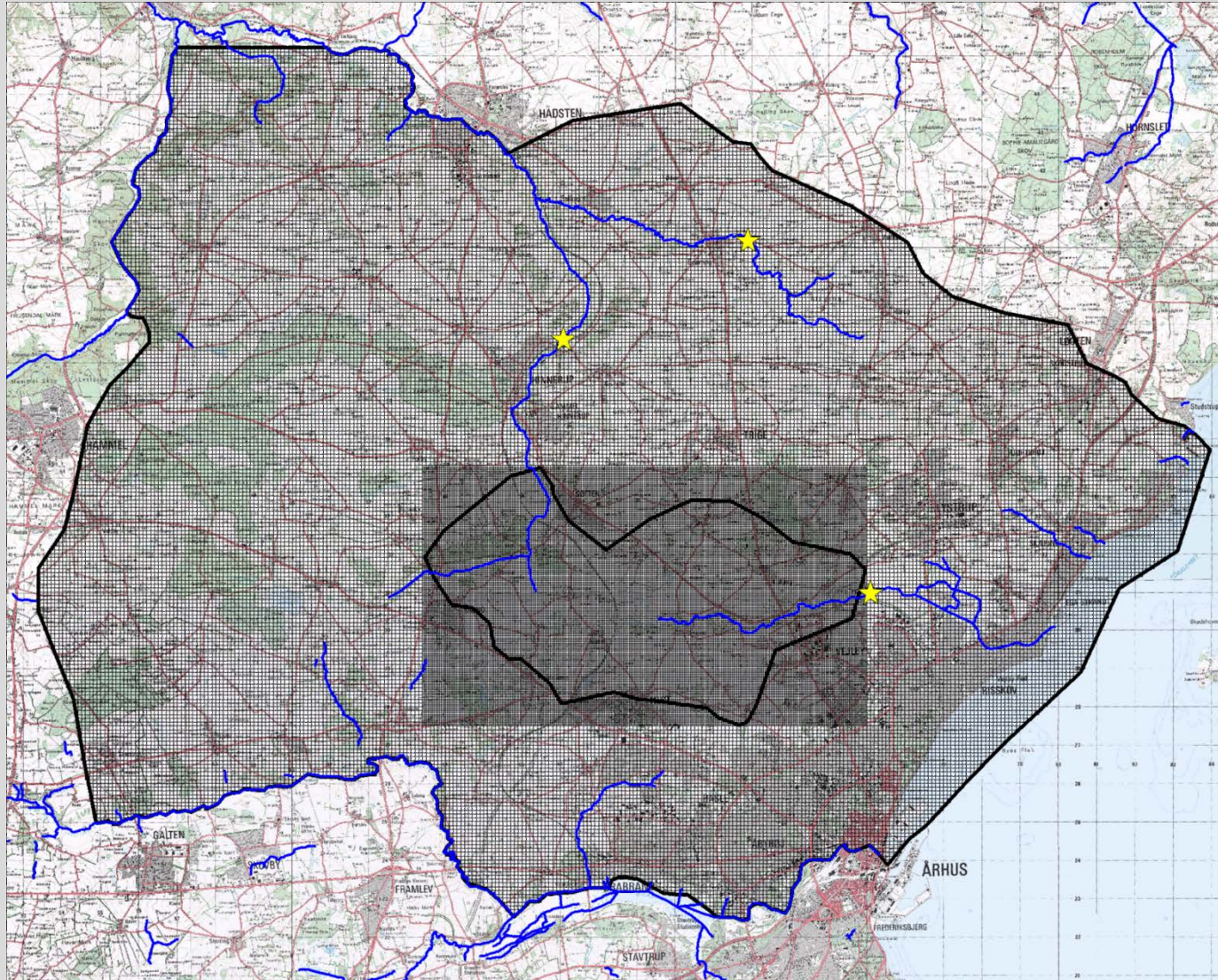
Reference geologisk model



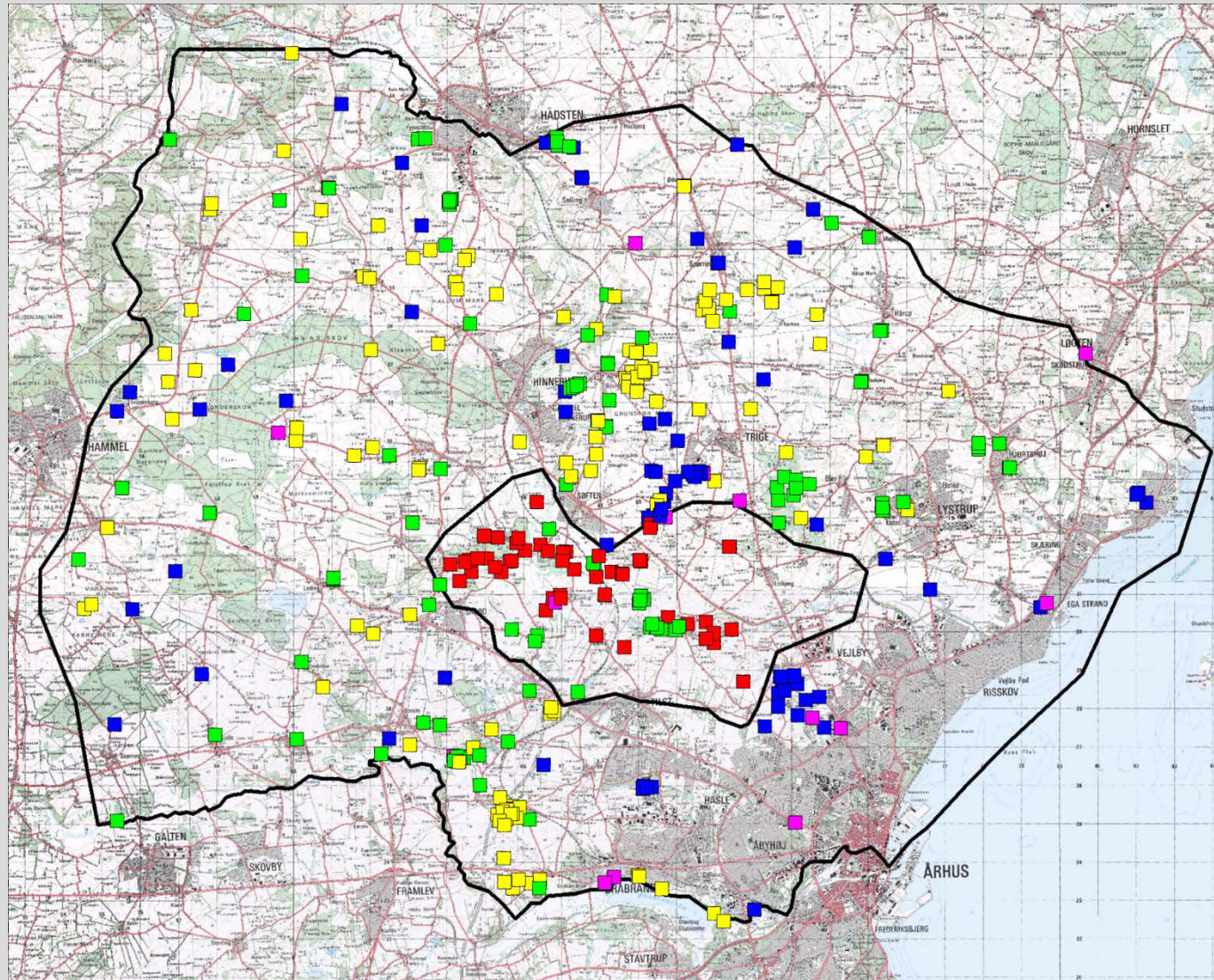
Reference geologisk model



Model og hydrologiske data

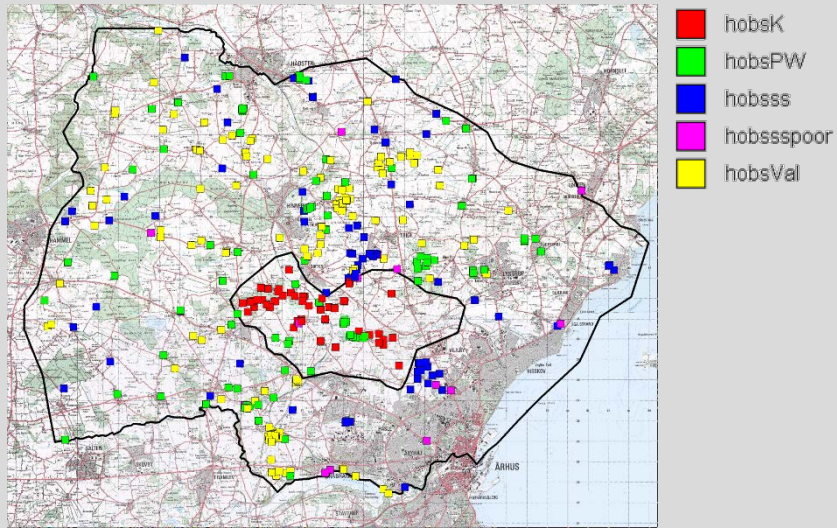


Model og hydrologiske data

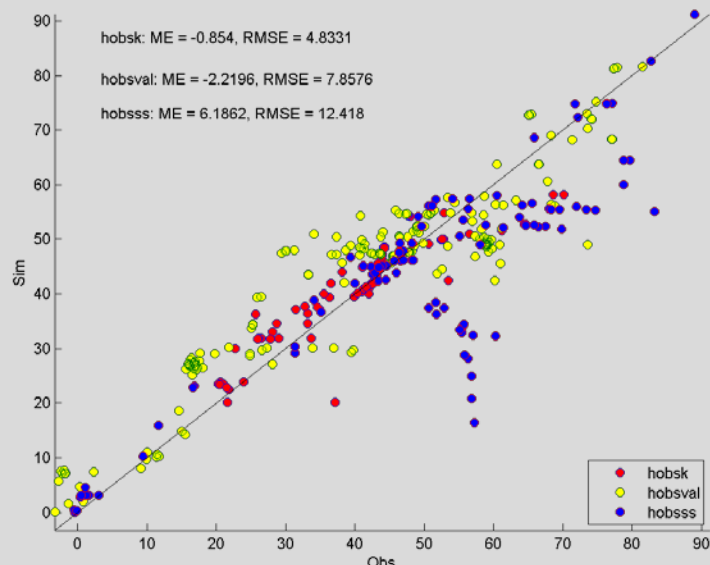


- hobsK
- hobsPW
- hobsss
- hobssspoor
- hobsVal

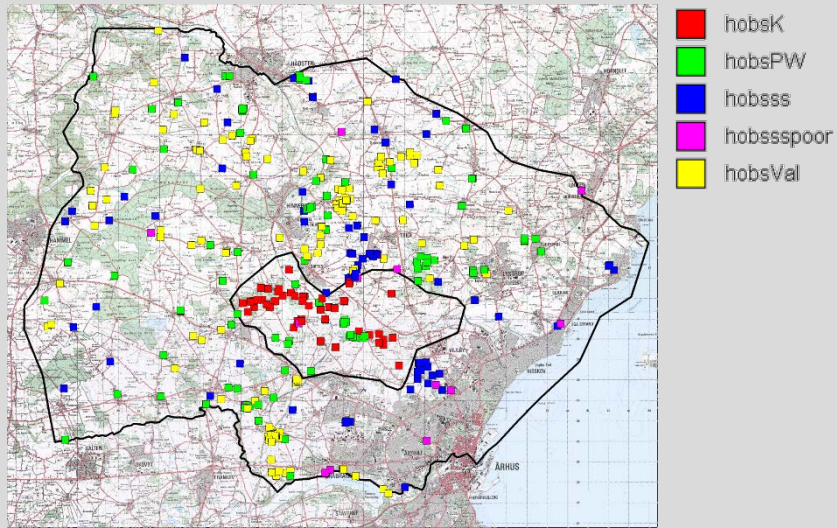
Model og hydrologiske data



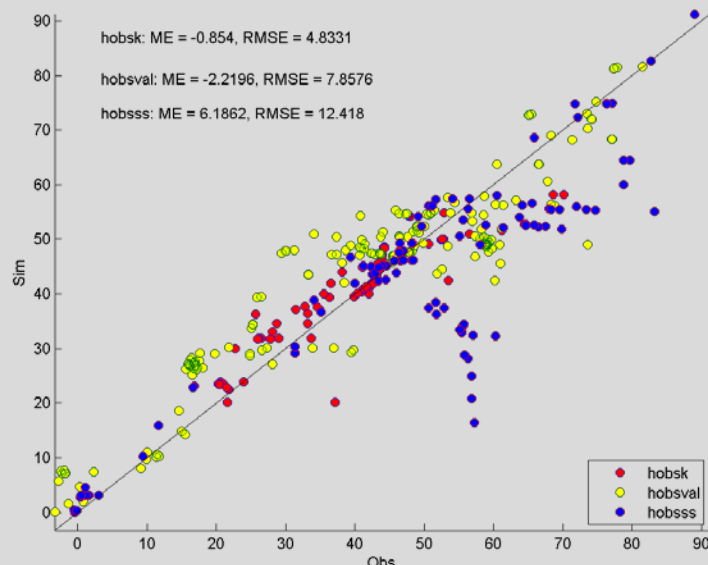
Reference model



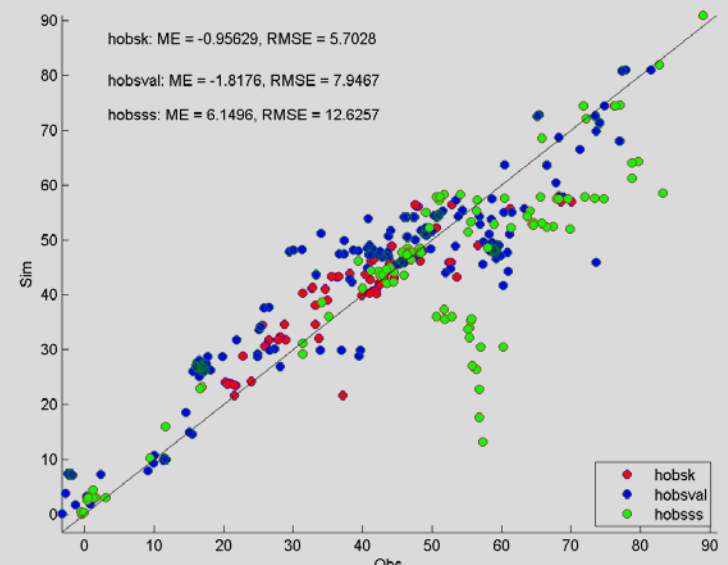
Model og hydrologiske data



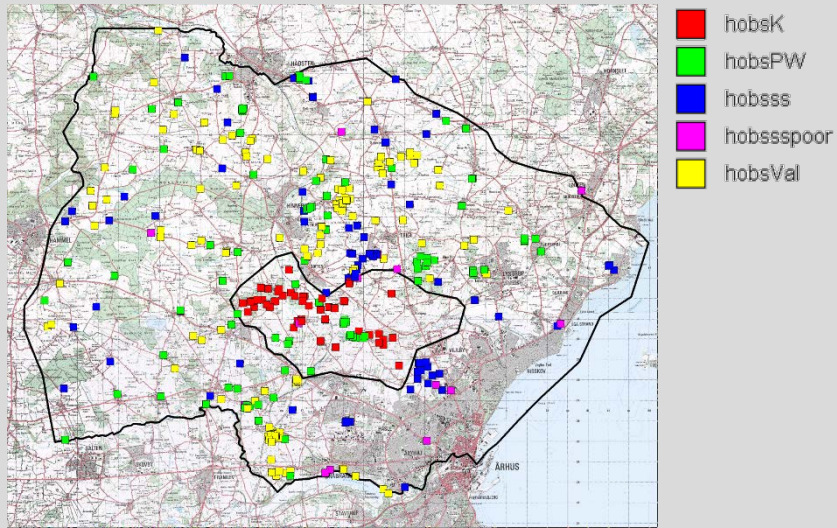
Reference model



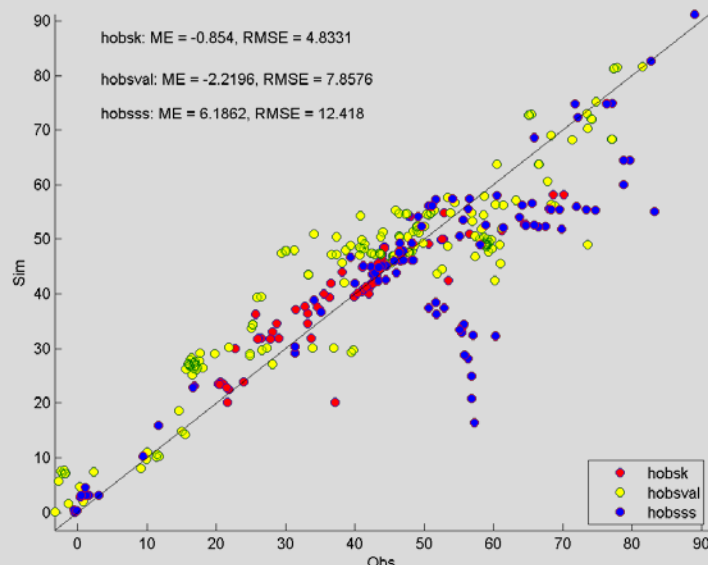
Cluster model 1



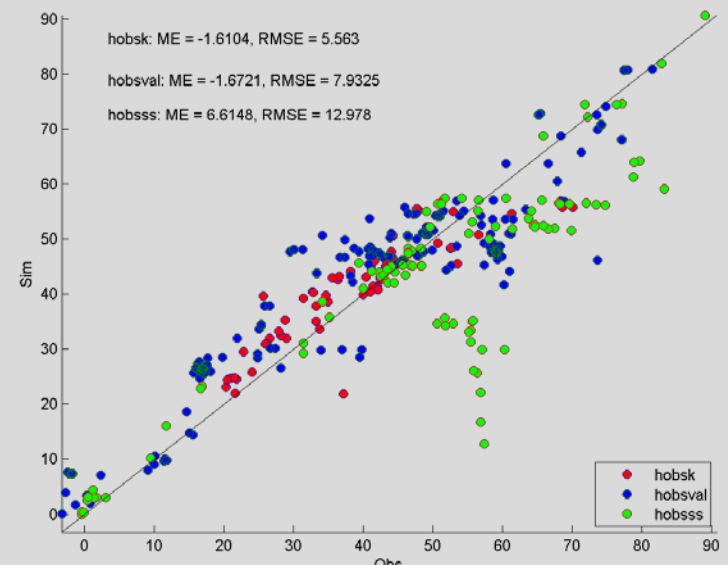
Model og hydrologiske data



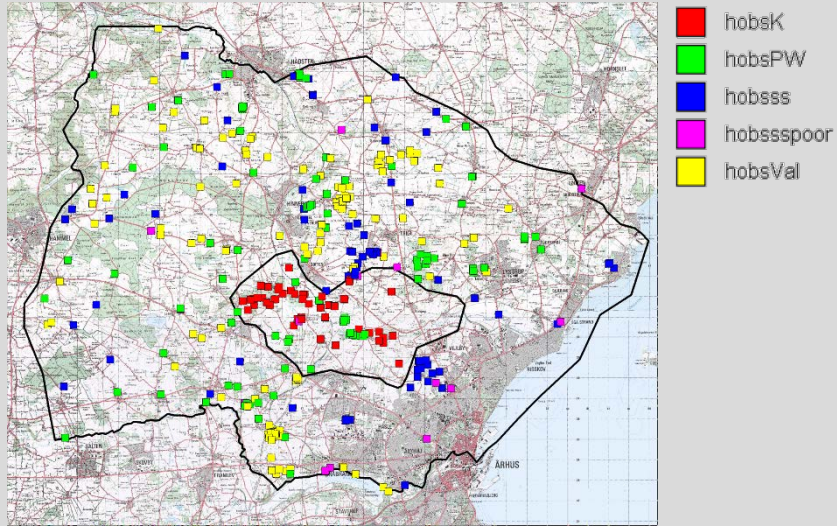
Reference model



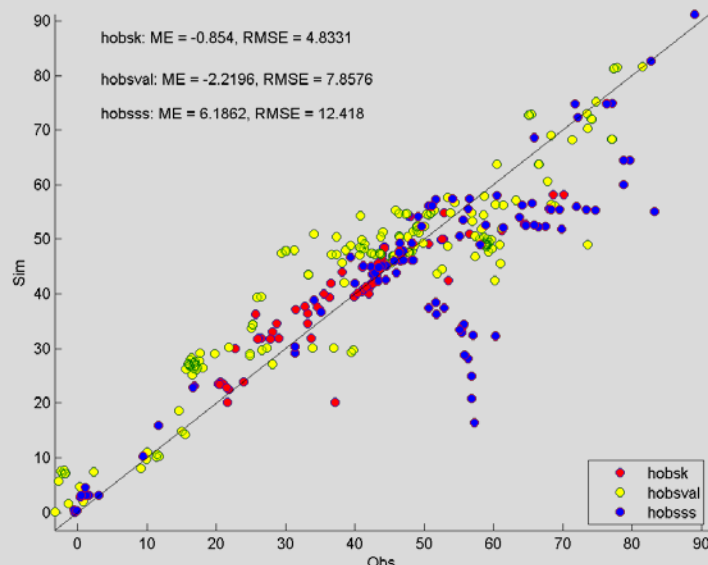
Cluster model 2



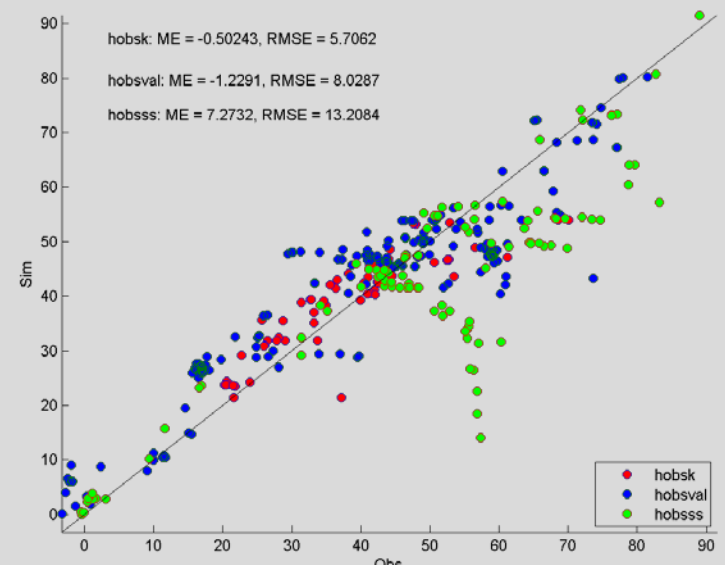
Model og hydrologiske data



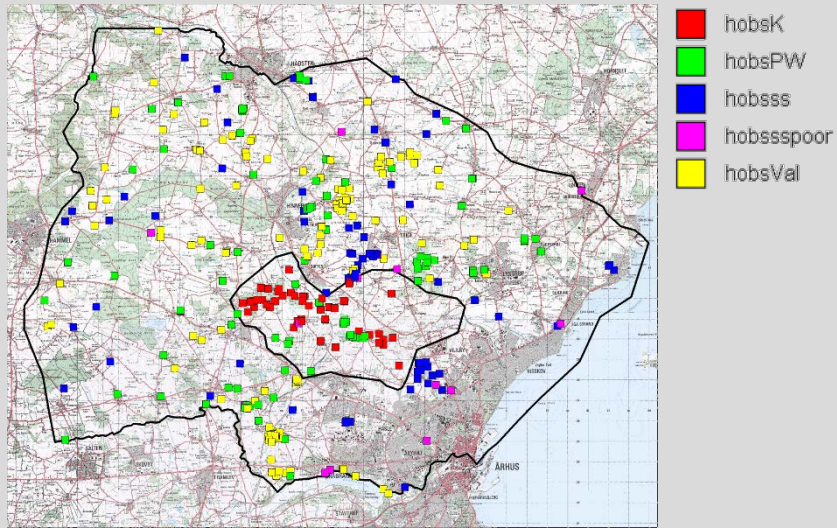
Reference model



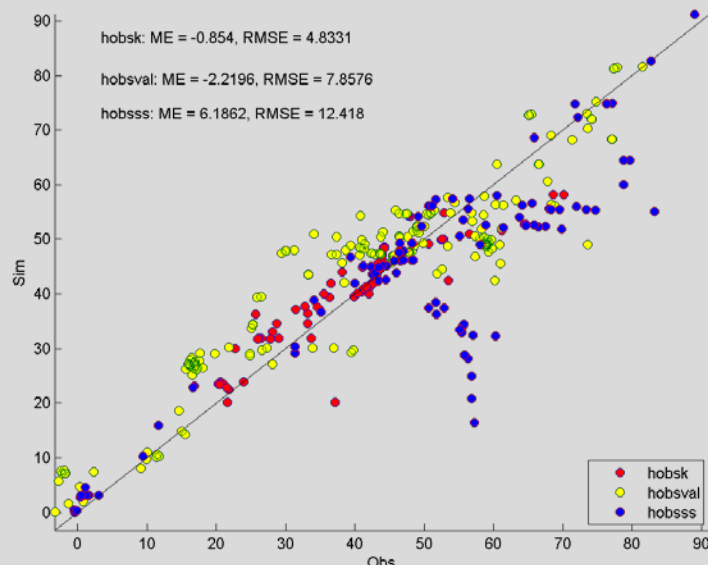
Cluster model 3



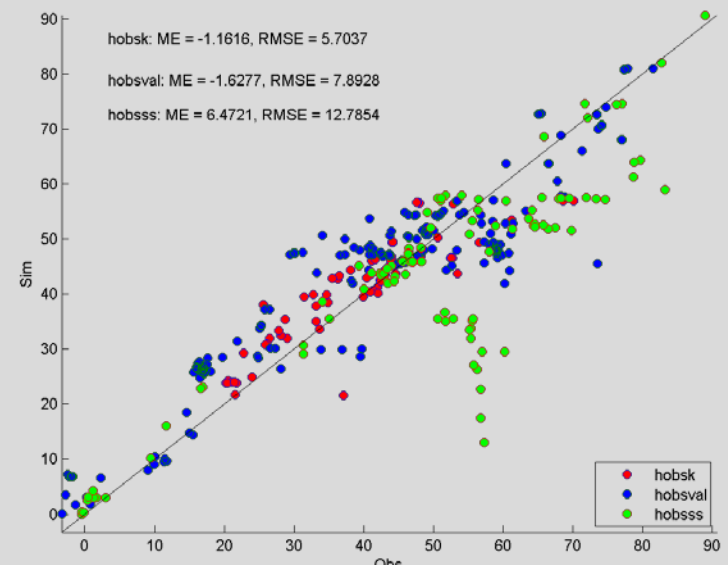
Model og hydrologiske data



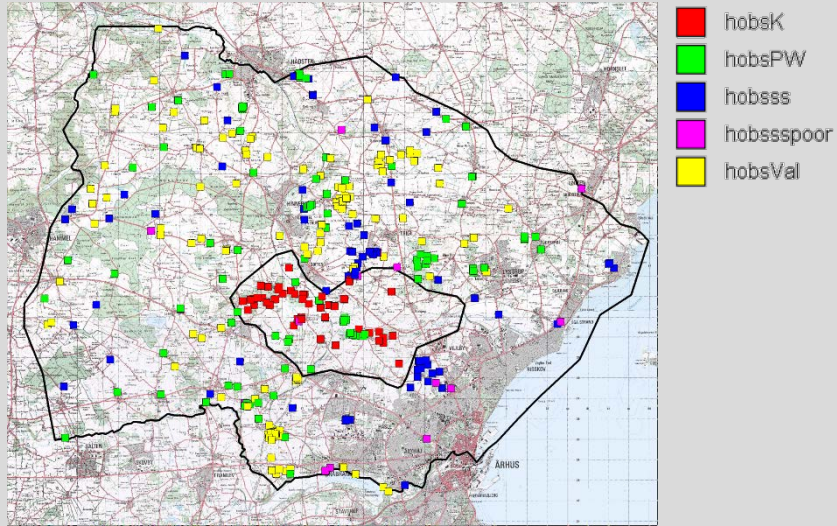
Reference model



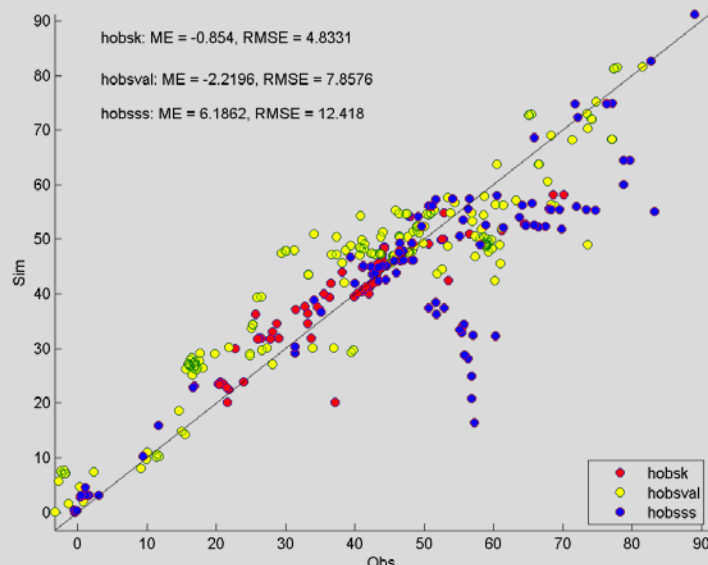
Cluster model 4



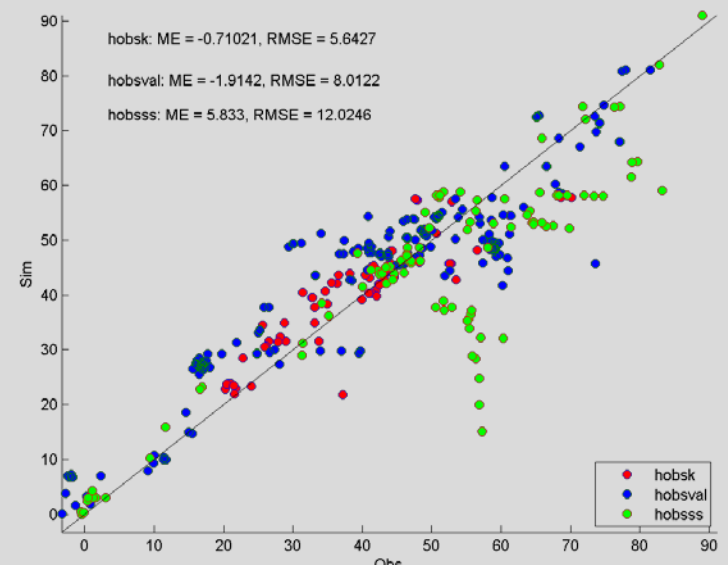
Model og hydrologiske data



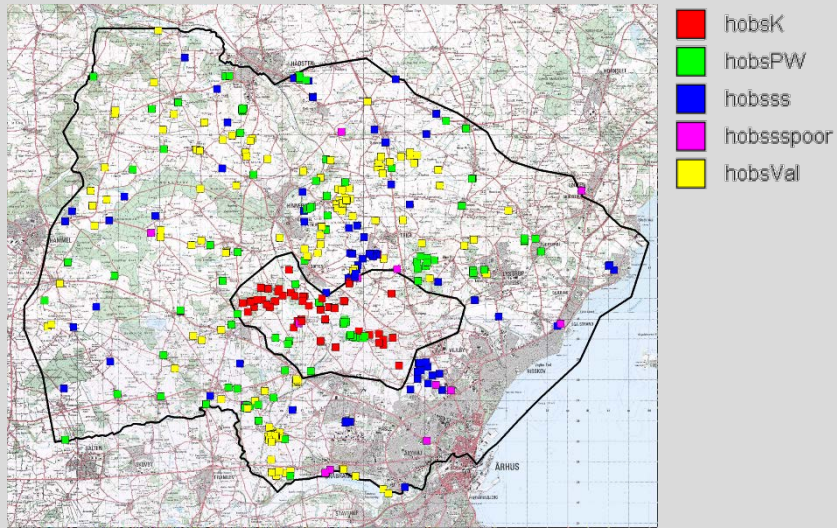
Reference model



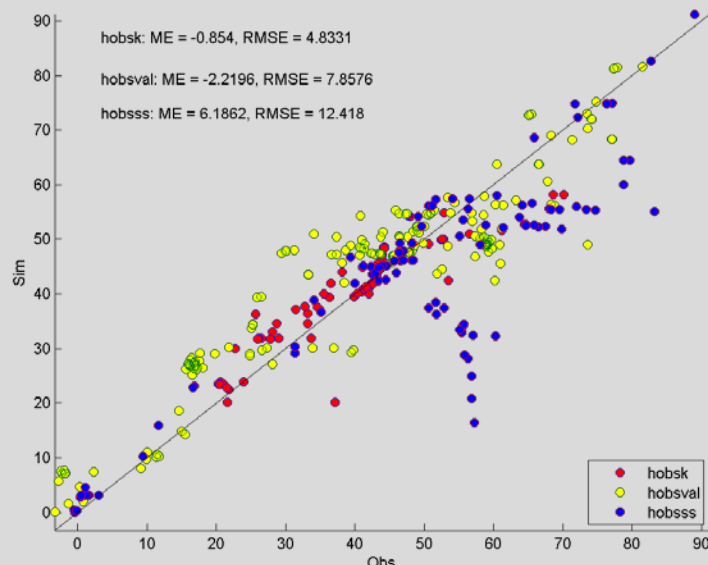
Cluster model 5



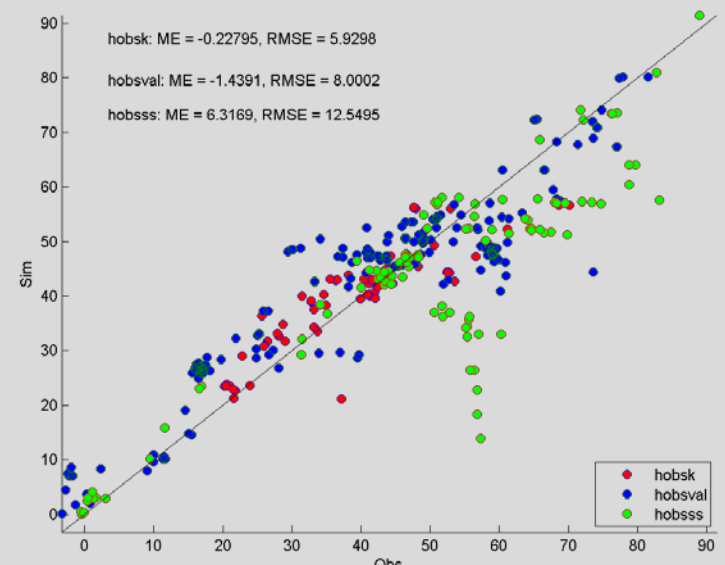
Model og hydrologiske data



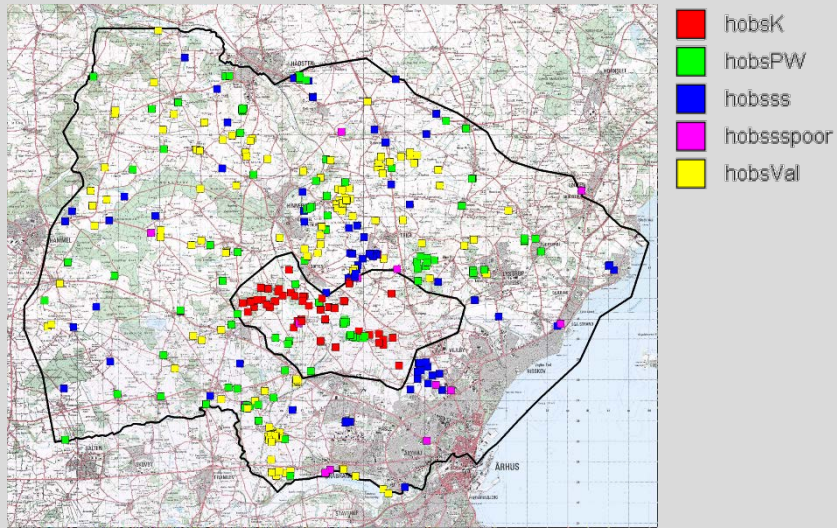
Reference model



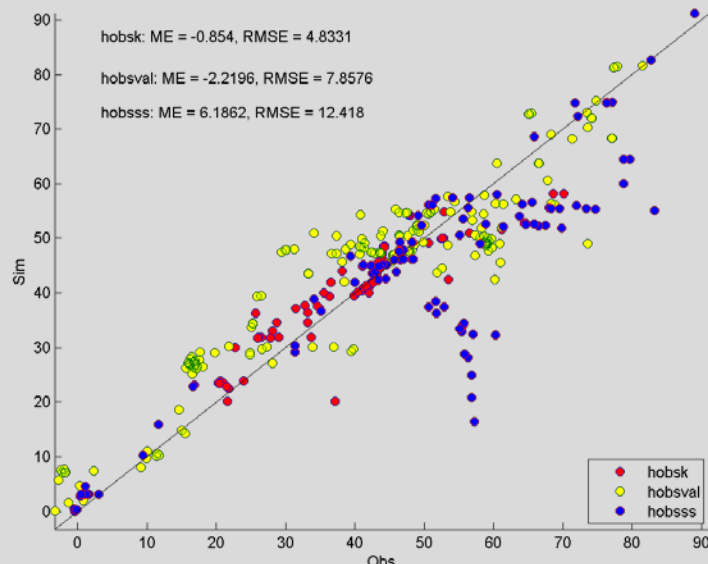
Cluster model 6



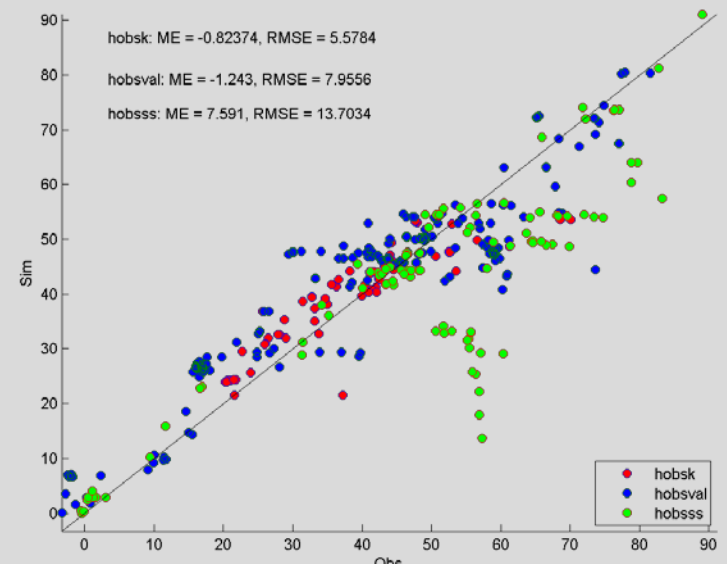
Model og hydrologiske data



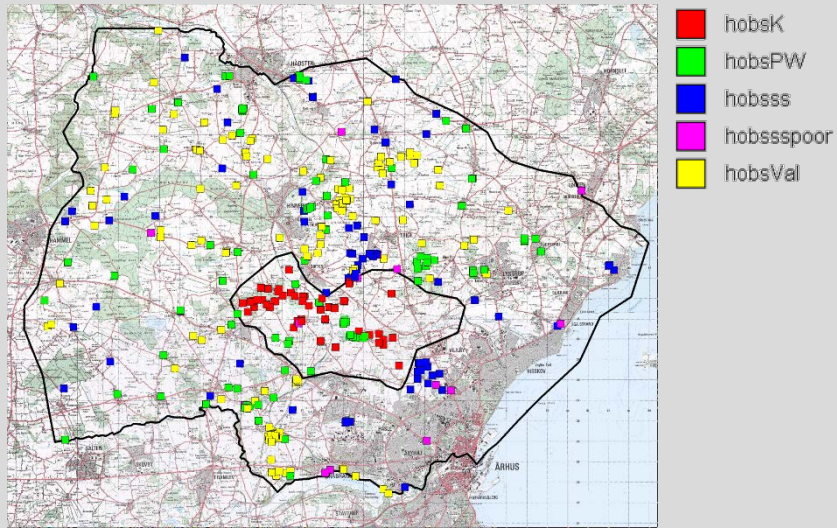
Reference model



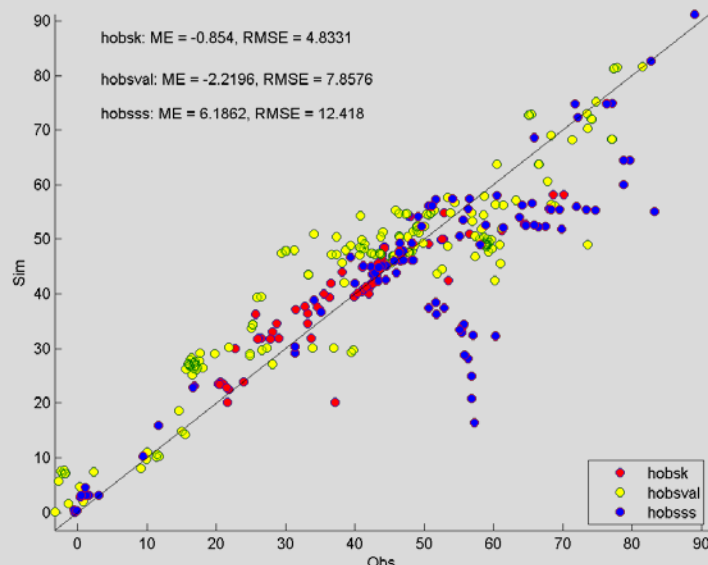
Cluster model 7



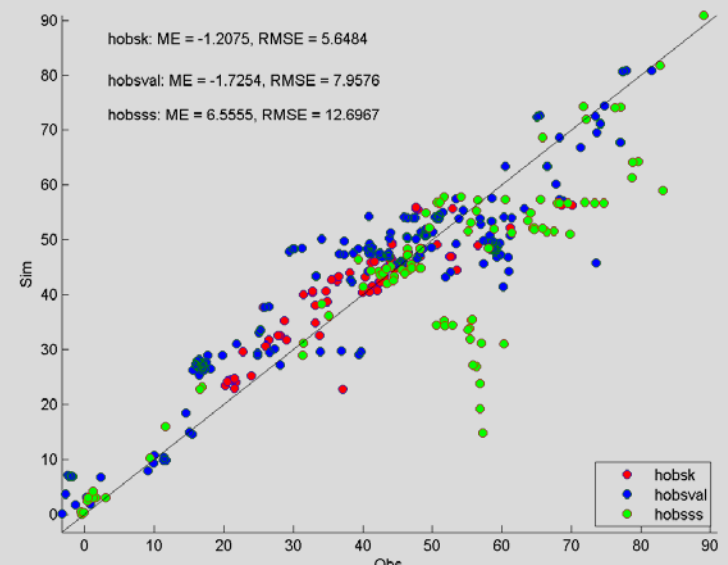
Model og hydrologiske data



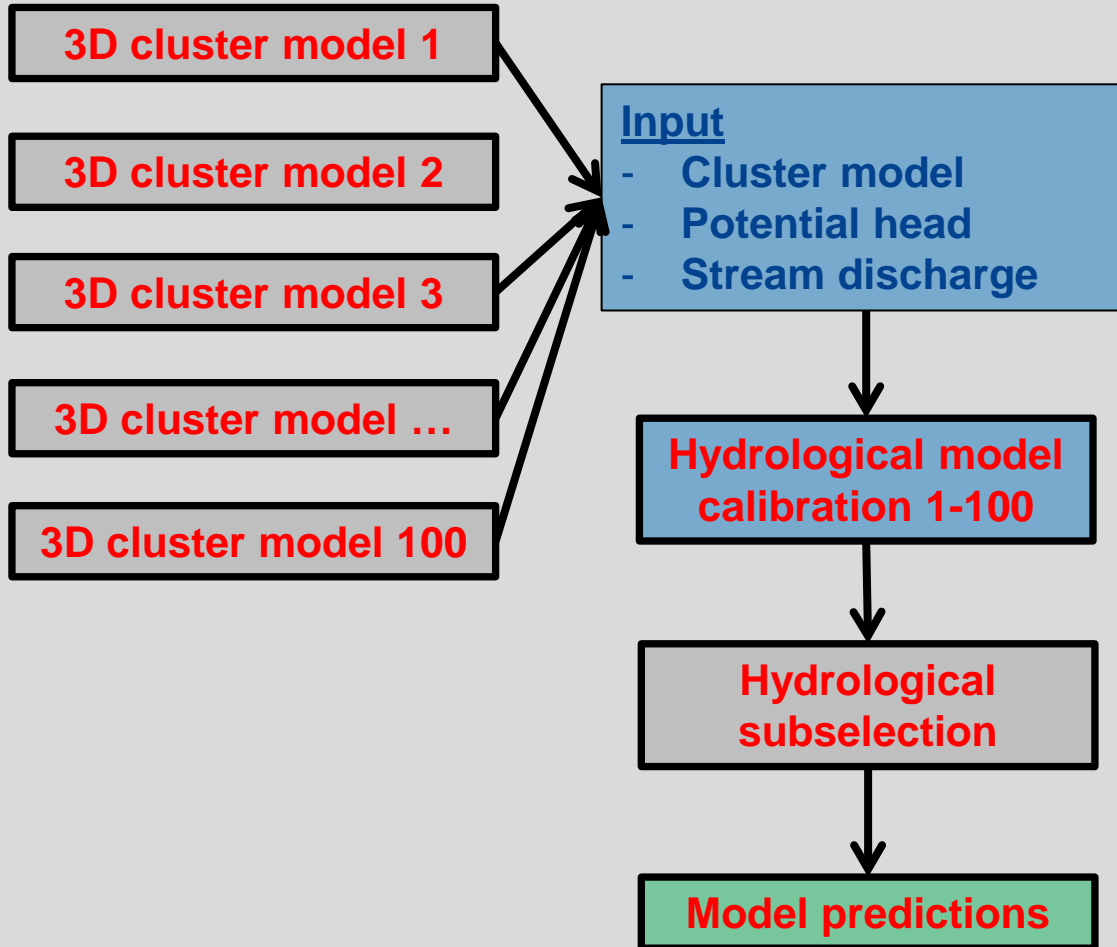
Reference model



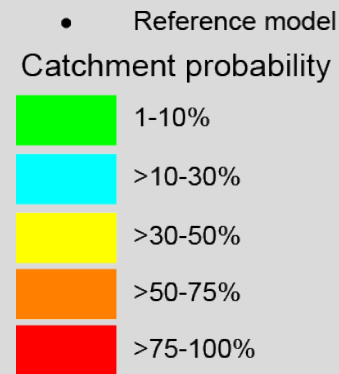
Cluster model 8



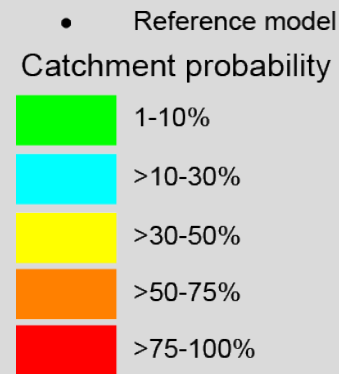
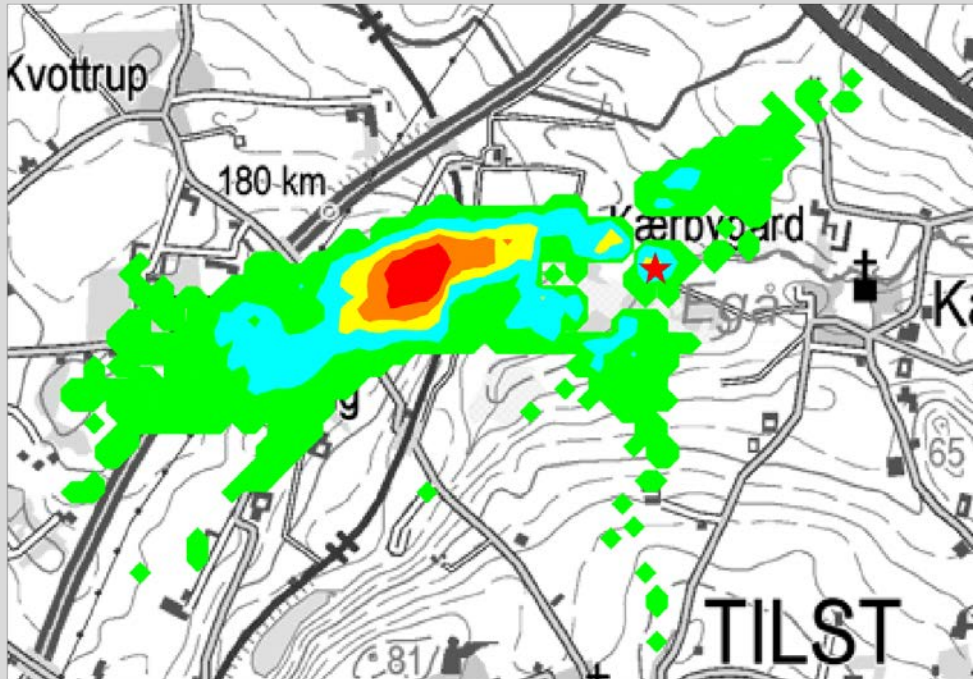
Model Uncertainty



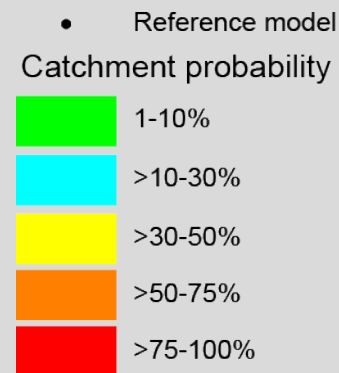
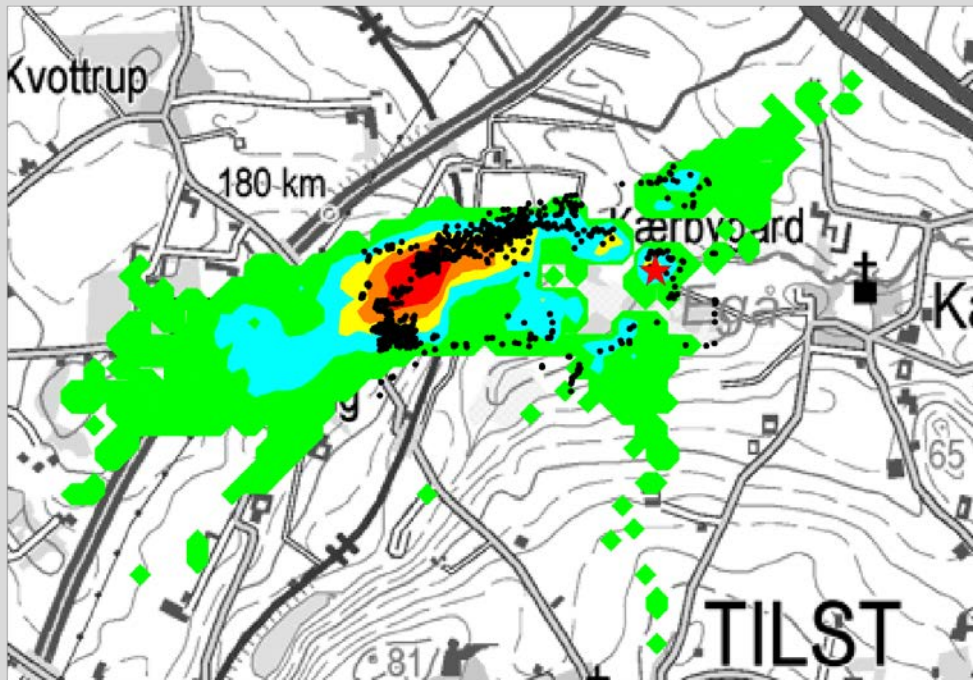
Oplandsusikkerhed



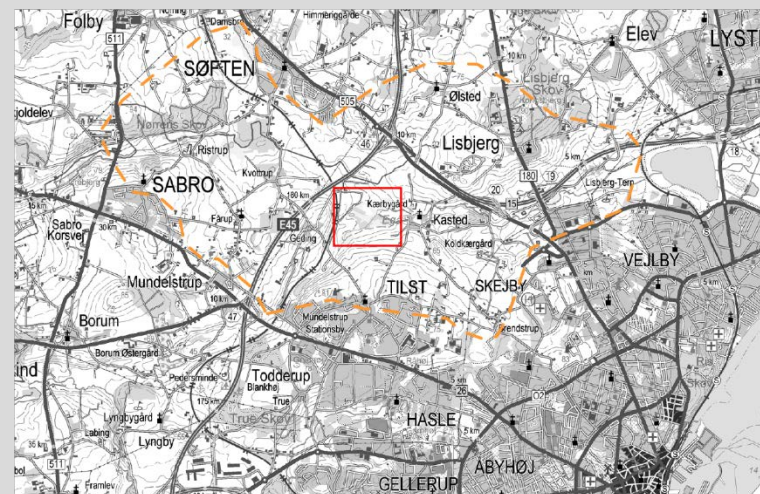
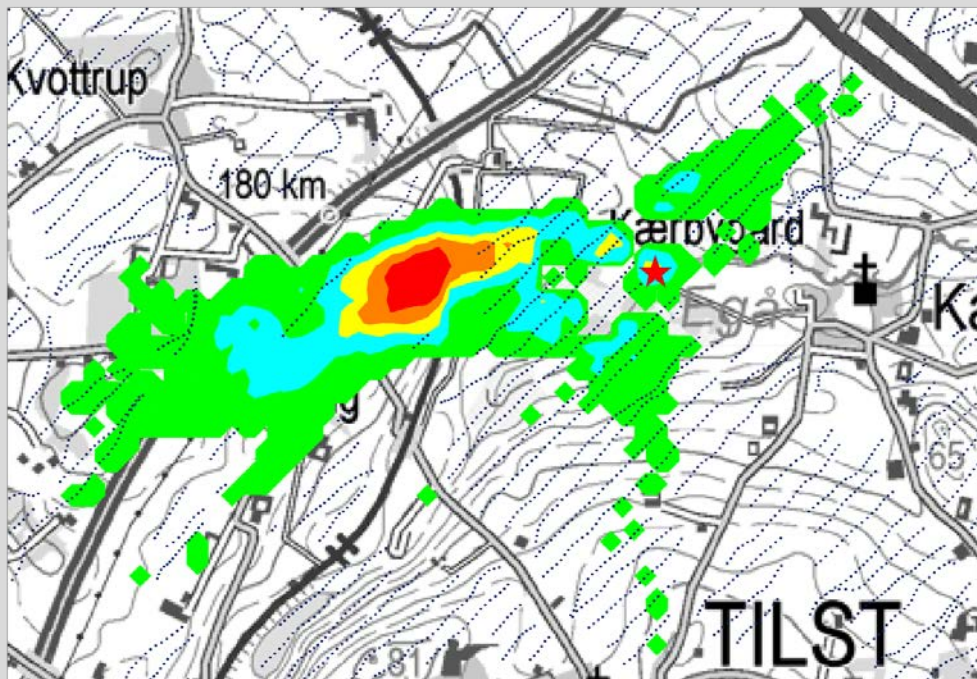
Oplandsusikkerhed



Oplandsusikkerhed



Oplandsusikkerhed



● Reference model

Catchment probability



Opsummering

- **For visse prædiktioner dominerer strukturelle fejl i hydrologiske modeller, men der findes få effektive måder at kvantificerer dem på**
- **Metoden er hurtig og effektiv**
- **Metoden er objektiv og reproducerbar**
- **Vha. subsektion kan vi genererer modeller som overholder alle input data -> geologiske, geofysiske og hydrologiske**
- **Metoden er generisk i forhold til geofysisk input**
- **Vores prædiktion er i overensstemmelse med vores referencemodel**

