

Technical University of Denmark



## Linkage mapping reveals strong chiasma interference in Sockeye salmon: Implications for interpreting genomic data

Limborg, Morten; Waples, Ryan K; Allendorf, Fred W; Seeb, James E

*Published in:*

G3: Genes, Genomes, Genetics (Bethesda)

*Link to article, DOI:*

[10.1534/g3.115.020222](https://doi.org/10.1534/g3.115.020222)

*Publication date:*

2015

*Document Version*

Publisher's PDF, also known as Version of record

[Link back to DTU Orbit](#)

*Citation (APA):*

Limborg, M., Waples, R. K., Allendorf, F. W., & Seeb, J. E. (2015). Linkage mapping reveals strong chiasma interference in Sockeye salmon: Implications for interpreting genomic data. *G3: Genes, Genomes, Genetics (Bethesda)*, 5(11), 2463-73. DOI: 10.1534/g3.115.020222

## DTU Library

Technical Information Center of Denmark

---

### General rights

Copyright and moral rights for the publications made accessible in the public portal are retained by the authors and/or other copyright owners and it is a condition of accessing publications that users recognise and abide by the legal requirements associated with these rights.

- Users may download and print one copy of any publication from the public portal for the purpose of private study or research.
- You may not further distribute the material or use it for any profit-making activity or commercial gain
- You may freely distribute the URL identifying the publication in the public portal

If you believe that this document breaches copyright please contact us providing details, and we will remove access to the work immediately and investigate your claim.

# Linkage Mapping Reveals Strong Chiasma Interference in Sockeye Salmon: Implications for Interpreting Genomic Data

Morten T. Limborg,<sup>\*,†,1</sup> Ryan K. Waples,<sup>\*</sup> Fred W. Allendorf,<sup>‡</sup> and James E. Seeb<sup>\*</sup>

<sup>\*</sup>School of Aquatic and Fishery Sciences, University of Washington, Seattle, Washington 98195, <sup>†</sup>National Institute of Aquatic Resources, Technical University of Denmark, Vejløvej 39, Silkeborg, Denmark, and <sup>‡</sup>Division of Biological Sciences, University of Montana, Missoula, Montana 59812

ORCID ID: 0000-0002-7718-6531 (M.T.L.)

**ABSTRACT** Meiotic recombination is fundamental for generating new genetic variation and for securing proper disjunction. Further, recombination plays an essential role during the rediploidization process of polyploid-origin genomes because crossovers between pairs of homeologous chromosomes retain duplicated regions. A better understanding of how recombination affects genome evolution is crucial for interpreting genomic data; unfortunately, current knowledge mainly originates from a few model species. Salmonid fishes provide a valuable system for studying the effects of recombination in nonmodel species. Salmonid females generally produce thousands of embryos, providing large families for conducting inheritance studies. Further, salmonid genomes are currently rediploidizing after a whole genome duplication and can serve as models for studying the role of homeologous crossovers on genome evolution. Here, we present a detailed interrogation of recombination patterns in sockeye salmon (*Oncorhynchus nerka*). First, we use RAD sequencing of haploid and diploid gynogenetic families to construct a dense linkage map that includes paralogous loci and location of centromeres. We find a nonrandom distribution of paralogs that mainly cluster in extended regions distally located on 11 different chromosomes, consistent with ongoing homeologous recombination in these regions. We also estimate the strength of interference across each chromosome; results reveal strong interference and crossovers are mostly limited to one per arm. Interference was further shown to continue across centromeres, but metacentric chromosomes generally had at least one crossover on each arm. We discuss the relevance of these findings for both mapping and population genomic studies.

## KEYWORDS

gynogenesis  
meiosis  
recombination  
interference  
genome data

Recombination plays a crucial role in creating novel genetic variation in sexually reproducing species (Barton and Charlesworth 1998; Otto and Lenormand 2002) and for securing proper disjunction of sister chro-

matids and chromosomes during meiosis. Chiasma interference (hereafter simply referred to as interference) is a fundamental process that influences crossover locations because the formation of a chiasma reduces the chance of a nearby recombination (Sturtevant 1915). Interference was thought to only occur within independent chromosome arms because the centromere acted as a barrier to interference (Mather 1938).

Another important role of recombination includes crossing over between homeologs; these crossovers slow rediploidization of polyploid-origin genomes resulting from recent whole genome duplications (WGD). Pioneering studies considered allozyme loci in lake trout and brook trout hybrids to characterize segregation of duplicated loci in males and presented a meiotic model for explaining this residual tetrasomic inheritance (May *et al.* 1979; Wright *et al.* 1983). These meiotic models were recently synthesized to further promote awareness

Copyright © 2015 Limborg *et al.*

doi: 10.1534/g3.115.020222

Manuscript received July 7, 2015; accepted for publication September 14, 2015; published Early Online September 18, 2015.

This is an open-access article distributed under the terms of the Creative Commons Attribution 4.0 International License (<http://creativecommons.org/licenses/by/4.0/>), which permits unrestricted use, distribution, and reproduction in any medium, provided the original work is properly cited. Supporting information is available online at [www.g3journal.org/lookup/suppl/doi:10.1534/g3.115.020222/-/DC1](http://www.g3journal.org/lookup/suppl/doi:10.1534/g3.115.020222/-/DC1)

<sup>1</sup>Corresponding author: School of Aquatic and Fishery Sciences, University of Washington, 1122 NE Boat Street, Box 355020, Seattle, Washington 98195. E-mail: morten.limborg@gmail.com

of these processes (Allendorf *et al.* 2015; May and Delany 2015). Indeed, WGDs have played an important role in the evolution of many polyploid taxa that often serve as complex, but enlightening, models for understanding genome evolution (Comai 2005; Parisod *et al.* 2010; Mable 2013). Knowledge about how meiotic recombination affects the evolution and structure of genomes is crucial to better understand and interpret genomic data.

Historically, basic meiotic processes have mainly been described in model organisms, but today advances in sequencing technology have catalyzed dense genome mapping in nonmodel species. Linkage maps have informed population-based studies, including many of polyploid-origin taxa. However, detailed interrogations of recombination patterns in nonmodel species still lag behind surveys from a few select model organisms (Broman and Weber 2000; Basu-Roy *et al.* 2013). Insights on recombination patterns from a broader range of taxa, including polyploid-origin species, are warranted.

Understanding how recombination shapes genetic diversity across genomes is also crucial for interpreting signals of population divergence in genomic data. The number and distribution of so-called islands of elevated divergence have received immense attention in recent literature on ecological speciation (Ellegren *et al.* 2012; Jones *et al.* 2012; Tine *et al.* 2014). Recombination rates have been invoked as an important factor explaining the size and genomic location of such islands (Renaut *et al.* 2013; Cruickshank and Hahn 2014). A better understanding of how recombination mechanisms vary across a genome will help explain the relative contribution of neutral drift vs. divergent selection in creating local regions of elevated divergence among ecotypes or populations within a species (see also discussion in Roesti *et al.* 2013).

Salmonid fishes are an excellent system for studying the role of recombination in genome evolution for a number of reasons. Single pair matings produce thousands of embryos, enabling the examination of large numbers of meiosis from a single individual. Also, details of ploidy manipulation are well worked out; the use of haploid or gynogenetic diploid families greatly enhances genotyping and mapping capabilities (Komen and Thorgaard 2007).

Early inheritance studies in salmonids, although often based on fewer than 50 allozyme loci, suggested strong crossover interference: in females, extended regions between telomeric loci and the centromeres invariably had a single crossover (Thorgaard *et al.* 1983; Allendorf *et al.* 1986; Lindner *et al.* 2000). These early findings were restricted to only a subset of chromosomes and did not include genome-wide interrogations of interference.

We know that homolog recognition and pairing initiates at the telomeres (reviewed in Calderon *et al.* 2014) and interference occurs across centromeres in humans (Colombo and Jones 1997; Broman and Weber 2000) and zebrafish (*Danio rerio*) (Demarest *et al.* 2011). However, detailed genome-wide descriptions of interference are scarce for nonmodel organisms, and the few that exist reveal significant interspecific differences (Segura *et al.* 2013).

Further, the salmonid ancestor went through a recent WGD (Ohno 1970; Allendorf and Thorgaard 1984), and the rediploidization process is not complete. Early inheritance studies in salmonids described a complicated pattern of both disomic and residual tetrasomic inheritance for a suite of isoloci duplicated genes that share alleles (May *et al.* 1979; Wright *et al.* 1983; Allendorf and Danzmann 1997). These isoloci were found to reside mainly in telomeric regions (Thorgaard *et al.* 1983; Allendorf *et al.* 1986; Seeb and Seeb 1986). More recently, studies in a few Pacific salmonid species have combined genotyping by sequencing and the use of haploid mapping to map isoloci (*Oncorhynchus tshawytscha*, Briec *et al.* 2014; *O. kisutch*, Kodama *et al.* 2014; *O. keta*, Waples *et al.* 2015). Results suggest that eight syntenic pairs of

homeologous chromosome arms remain duplicated across species. These findings are further supported by insights from the rainbow trout (*O. mykiss*) genome sequence that shows conserved sequence identity and gene order between paired paralogous regions (Berthelot *et al.* 2014). Data from additional species will contribute to a more complete understanding of how the WGD has shaped genome evolution in salmonids and other polyploid-origin species.

Our objective is to use genetic mapping to improve understanding of recombination and interference. We combine the use of genotyping by sequencing data from gynogenetic haploid and gynogenetic diploid progeny from a single female sockeye salmon (*O. nerka*). We then: (1) produce a dense genetic map and locate the centromeres and retained duplications; (2) test for the occurrence and strength of interference; and (3) test for the occurrence of interference across centromeres.

## MATERIALS AND METHODS

### Gynogenetic mapping families

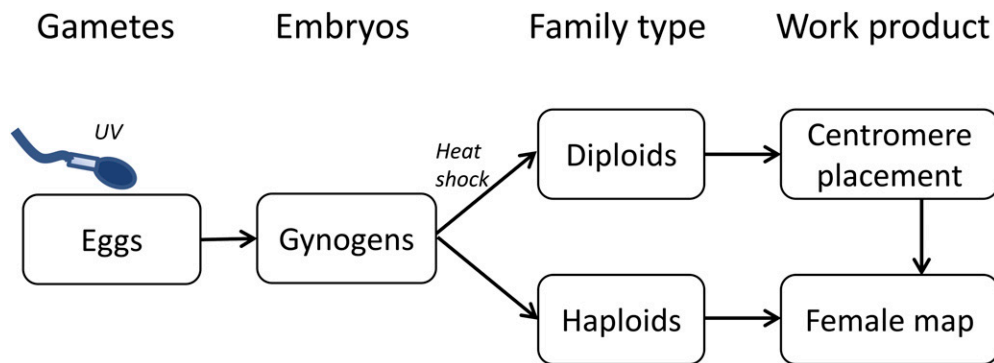
We produced two families of gynogenetic progeny as described in Chourrou (1980). One gravid female and one male sockeye salmon from the Lake Sammamish population were stripped for eggs and sperm at the Issaquah State Salmon Hatchery (Washington, USA) in December 2012. Fin clips were taken from both parents and stored in ethanol. All progeny were produced by fertilizing all of the eggs with sperm that had been genetically inactivated with 10 min exposure to UV light (Figure 1). A haploid family for linkage map construction was created by placing half of these haploid embryos into the incubator with no further treatment (Figure 1). We produced a second family of gynogenetic diploids (half-tetrads) by exposing the remaining embryos to 10 min heat shock at 28° to induce retention of the second polar body (Figure 1). The first embryo hatched after 86 d; remaining embryos from both families were immediately sampled and stored in ethanol.

DNA was extracted from fin clips and embryos using DNEasy-96 kits (Qiagen, Valencia, CA, USA) following the manufacturer's directions. Whole embryos were dissected from the yolk and chorion and added directly to the lysis buffer. Both parents as well as 142 putative haploid and 141 putative gynogenetic diploid progeny were genotyped for 96 EST-derived SNPs using 5'-nuclease assays (Elfstrom *et al.* 2006; Storer *et al.* 2012). Genotypes were called using the BioMark software v3.0.2 (Fluidigm, South San Francisco, CA). Embryos with paternal alleles signaled failure of the UV treatment and were excluded from further analysis.

Success of the heat shock treatment was evaluated by screening the same 96 SNPs from the 5'-nuclease assays in putative gynogenetic diploids for the occurrence of completely homozygous embryos. Fully homozygous embryos, for loci segregating in the female parent, would signal failure of the heat shock to incorporate the second polar body; those individuals were also excluded. Genotypes for the 5'-nuclease assay SNPs that were segregating in the gynogenetic families were also used for mapping after filtering for Mendelian inheritance and segregation distortion (see below).

### Sequencing

Genotyping was performed by sequencing restriction site-associated DNA (RAD-seq). All sequencing was done at the University of Oregon High Throughput Sequencing Facility using an Illumina HiSeq2000. We generated sequencing libraries using the restriction enzyme *SbfI* following methods previously described (Baird *et al.* 2008; Everett *et al.* 2012). We ligated unique barcodes (6 bp) to digested DNA following the work of Miller *et al.* (2012). The female parent was sequenced together with gynogenetic haploid and diploid progeny to 101 bp reads



**Figure 1** Schematic overview of the construction of gynogenetic families used for linkage map construction. Gametes were collected from a single set of parents followed by UV irradiation of sperm ensuring that only maternal DNA was incorporated into developing embryos. After fertilization, half the gynogens were allowed to develop into gynogenetic haploids and the others were heat-shocked to produce gynogenetic diploids (Chourrout 1980). Both families were RAD sequenced for linkage map construction and recombination analyses.

(Figure 1). Samples were sequenced on five lanes: two lanes each included the female parent and 47 gynogenetic haploids and three lanes each included 32 gynogenetic diploid progeny.

### Detection and genotyping of polymorphisms

We used the *Stacks* software package v1.04 (Catchen *et al.* 2013) to identify polymorphic loci and to assign genotypes. We used the *process\_radtags* program to remove reads characterized by low-quality, uncalled bases, or with ambiguous barcodes. Retained reads were demultiplexed and trimmed to 94 bp by removing the barcode and terminal base.

We then identified duplicated loci based on the segregation patterns of alleles in the offspring following the approach of Waples *et al.* (2015). More details about this approach are given in Supporting Information, File S1. Duplicated loci contain sequences from at least two distinct genomic locations and have segregation patterns deviating from disomic Mendelian inheritance (*i.e.*, confounded loci *sensu*; Waples *et al.* 2015).

RAD loci, including duplicated loci, were then genotyped for the haploid family and combined with genotypes for the 5'-nuclease SNPs for linkage map construction. Strict segregation distortion tests served to detect and discard any mis-specified loci. We excluded progeny with less than  $0.5 \times 10^6$  reads because genotypes could not be reliably assigned with lower sequence coverage.

### Linkage map construction

The haploid family was used to construct the linkage map and the gynogenetic diploid family was used to locate centromeres (Figure 1).

The map was generated by using the minimum spanning tree method implemented in the program MSTMap (Wu *et al.* 2008). Duplicated loci were mapped following the work of Waples *et al.* (2015). We compared our map with previously published linkage maps for sockeye salmon (Everett *et al.* 2012) and rainbow trout (Miller *et al.* 2012) to aid construction and annotation of linkage groups (LGs). We name LGs by considering the numbers given by Everett *et al.* (2012) preceded by a 'So' prescript (see File S1 and Table S1 for more details).

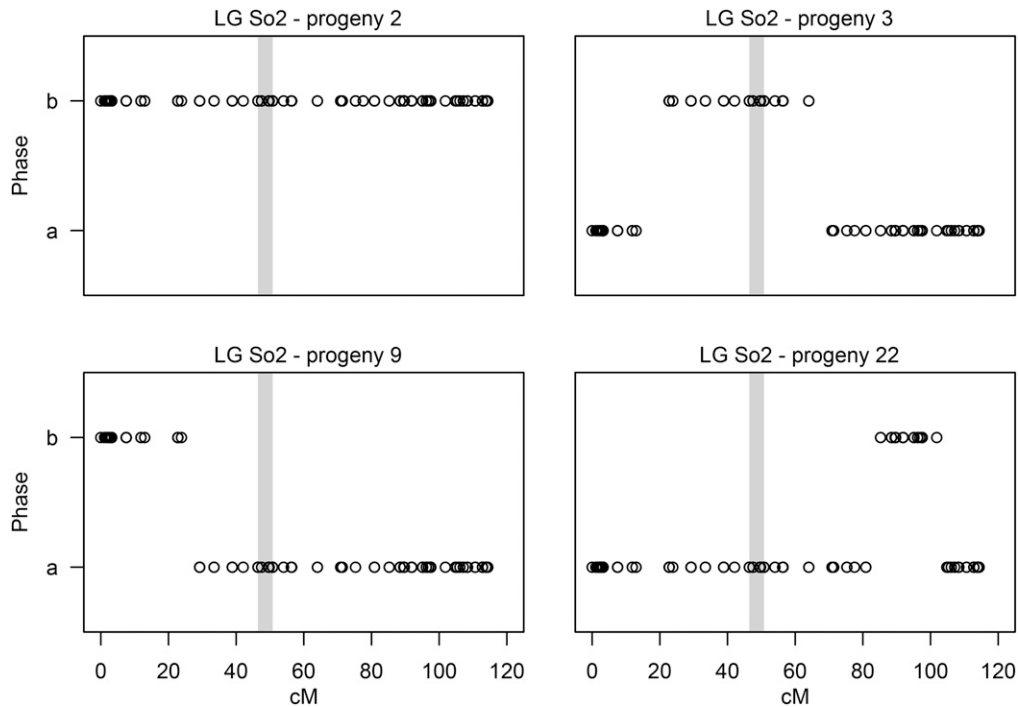
Half-tetrad analysis of the gynogenetic diploid offspring was used to place centromeres. Raw Illumina reads were processed in *Stacks* as described for haploids. Only haplotypes for nonduplicated loci were exported. The need to accurately call heterozygote genotypes in the diploid progeny necessitated a higher cut-off threshold of  $1.5 \times 10^6$  reads compared to the haploid progeny. We exported haplotype alleles from *Stacks* to call genotypes and merged these with genotypes for SNPs detected with the 5'-nuclease assays. Loci with >10% missing genotypes were discarded.

We estimated the frequency of second division segregation ( $y$ ) for each locus following the work of Thorgaard *et al.* (1983) to identify centromeric regions on each LG. Values of  $y$  are scored as observed heterozygosity in the gynogenetic diploid family and range between zero and one. A heterozygote genotype indicates that an odd number of recombination events have occurred between the locus and the centromere; a homozygous genotype indicates zero or an even number of recombination events. Centromeres are nonrecombining regions that occur as a single location on a linkage group; therefore, adjacent loci are expected to have low  $y$  values because recombinations will be rare over the short locus-centromere distances. For loci with low  $y$  values, it can be difficult to identify their orientation in relation to the centromere. Therefore, centromeric regions were conservatively defined as the shortest interval on an LG including all markers with  $y < 0.10$ .

Finally, loci were assigned to specific chromosomal regions, arms or centromeres, to complete the linkage map and to enable downstream analyses of interference. We labeled loci with  $y < 0.10$  as centromeric (c), and, for acrocentric chromosomes, loci with  $y > 0.10$  were assigned to reside on arm a1. For metacentric chromosomes, loci with  $y > 0.10$  were arbitrarily assigned to reside on arm a1 if located before the centromeric region [*i.e.*, smaller centimorgan (cM) value on the map], or to reside on arm a2 if located after the centromeric region. Finally, it is important to note that even with a few thousand loci, our coverage of the genome will often be insufficient to detect the short p arm for some acrocentric chromosomes.

### Interference

First, we identified recombination events in both haploid and diploid gynogenetic families along each linkage group. We infer phase changes within haploid offspring to be the result of recombination using the parental phase inferred during linkage map construction. We count offspring with zero, one, or two crossover events per arm. In gynogenetic diploids, homozygotes and heterozygotes reflect different phases of the recombinant chromatid resulting from meiosis I. Accordingly, homozygotes and heterozygotes represent distinct maternal phases. Duplicated loci were not considered because alleles could not be assigned to a unique map location. This framework was then used to count number and location of recombination events within each offspring and for each LG (Figure 2). Crossover events were detected as phase changes observed using a sliding window that recorded the mean phase over 11 consecutive marker locations. Up to two crossovers were placed along each chromosome arm. Because double crossover events were rare, we



**Figure 2** Examples of crossover patterns for four different gynogenetic haploids along LG So2. The two maternal allelic phases are shown on the y-axis. The gray area identifies the centromeric region (see text). Upper left plot shows a haploid offspring with no recombination events, an occurrence in approximately 50% of meiotic products when all four tetrads are sampled. The upper right shows an offspring with one crossover on each arm. The lower left plot depicts an offspring with one crossover on arm a1. The lower right plot shows an example of a haploid offspring with two crossovers on arm a2.

discarded putative third crossovers because these are likely to be the result of genotyping error at one or a few terminal loci (Briec *et al.* 2014).

We estimated the genome-wide distribution of  $y$  to assess the potential occurrence of interference. With no interference, and therefore fully independent crossover locations, the maximum expected value of  $y$  is 0.67 (Anderson 1925). In contrast, with complete interference,  $y$  is expected to reach 1.00 at distal locations because there will always be exactly one crossover between distal loci and the centromere.

Next, we estimated the strength of interference by fitting a gamma model to the distribution of observed interchiasma distances using CODA (Gauthier *et al.* 2011). The shape parameter ( $\nu$ ) of the fitted gamma distribution is referred to as the interference parameter; values between zero and one indicate negative interference (*i.e.*, crossover locations are more tightly clustered than expected at random). A value of one signals no interference and that crossover locations are independent of each other (*i.e.*, follow an exponential distribution), and values above one signal positive interference, with higher values indicating stronger interference. Interchiasma distances were only recorded for the diploid progeny to avoid any potential bias from merging observations with the haploid progeny that were used to generate the map distances. The distribution of interchiasma distances was then fit using the biologically realistic two parameter model that allows some fraction ( $p$ ) of observed crossovers to follow a noninterfering pathway (Falque *et al.* 2009; Gauthier *et al.* 2011; Basu-Roy *et al.* 2013). As recommended by Gauthier *et al.* (2011), we used the hill-climbing algorithm to search a parameter space with  $\nu = [1:20]$  and  $p = [0:1]$  to find the best fit for each LG. For LGs where estimates of  $\nu$  equaled 20, the analysis was repeated with increased boundaries. The CIs around estimates of  $\nu$  were calculated using the Fisher information matrix (Gauthier *et al.* 2011).

### Interference across centromeres

We tested for the occurrence of interference across centromeres on metacentric chromosomes by considering all offspring showing at least

one crossover on both arms. We followed the method described in Colombo and Jones (1997) by using the Spearman correlation function:

$$\rho(d) = \text{corr}(\chi_{a1}, \chi_{a2} | \max([\chi_{a1}, \chi_{a2}] \leq d)$$

Here,  $\chi_{a1}$  and  $\chi_{a2}$  are the genetic distance from the midpoint of defined centromeric region to the first crossover location on arms a1 and a2. We considered different interval sizes around the centromeric midpoint ( $d$ ) ranging from 10 cM, minimum distance allowing enough observations, and sequentially increasing  $d$  by 1 cM. A negative correlation indicates interference across centromeres, because a crossover close to the centromere translates into a larger-than-expected distance to the first crossover on the opposite arm. Data were pooled across all metacentric LGs because our data have too few observations to consider individual LGs. We estimated  $\rho(d)$  for both haploid and diploid families; families were treated independently for the reasons given above.

### Data availability

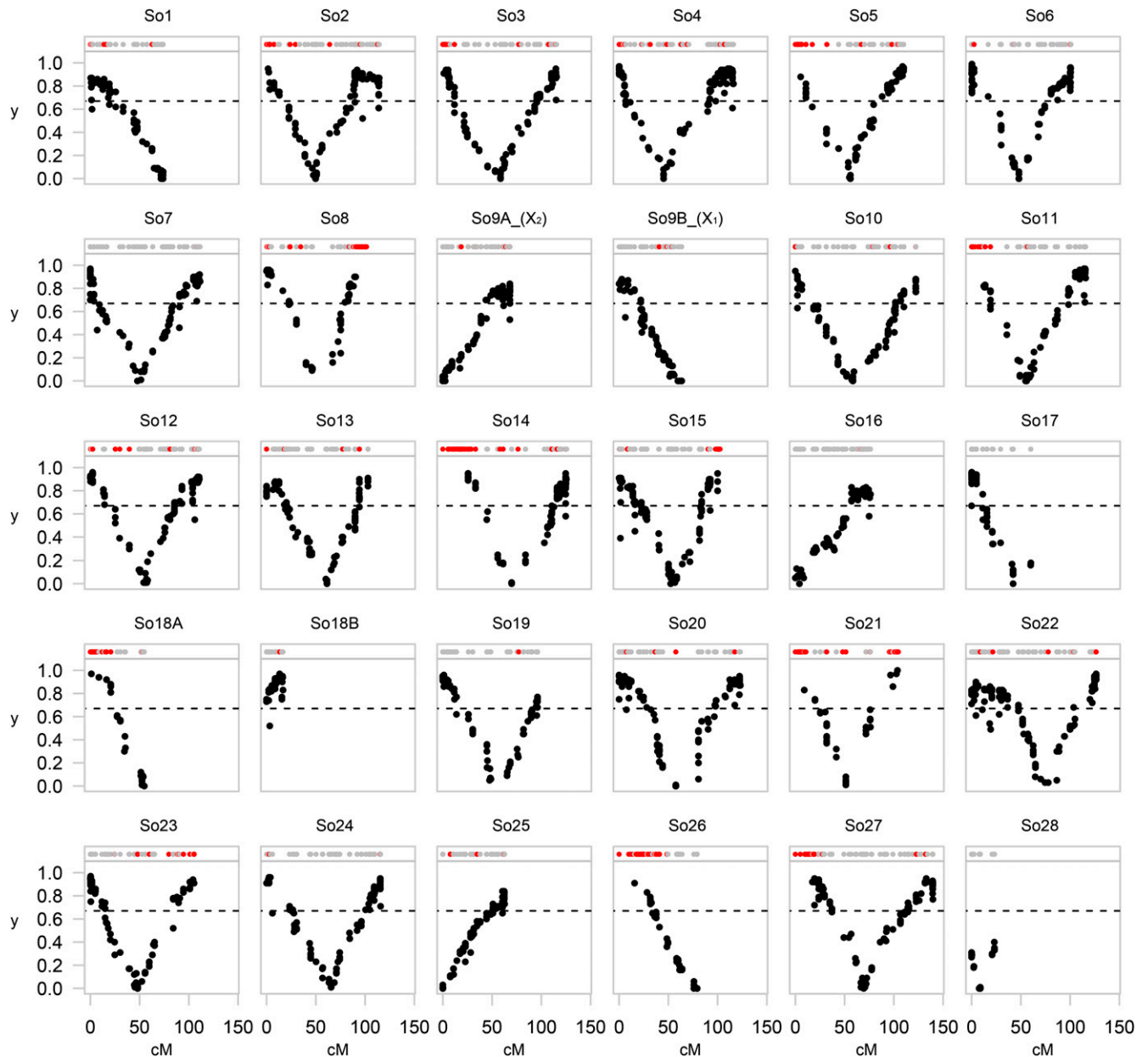
Raw sequence data are deposited in the Short Read Archive (SRA) with accession number SRP063568. Genotypes for both haploid and diploid progeny are deposited on Dryad (doi: 10.5061/dryad.q675s).

## RESULTS

### Linkage map

An average number of  $2.5 \times 10^6$  reads for 93 haploids and  $3.0 \times 10^6$  reads for 77 diploids (Table S2) resulted after quality filtering, barcode recovery, demultiplexing, and discarding individuals with low coverage. A total of 3496 loci remained after excluding loci uninformative for mapping (monomorphic in the female parent or with >25% missing genotypes in the offspring). Of these, 868 loci were classified as duplicated. Adding the 31 polymorphic 5'-nuclease SNPs resulted in 3527 loci available for linkage map construction.

Initial linkage group construction using the haploid family produced 30 LGs containing between 21 and 184 markers each (Table S3).



**Figure 3** Estimated  $y$  values plotted along each linkage group. Each plot represents an LG with mapped loci presented by circles in the top with nonduplicated loci shown as gray circles and duplicated loci shown as red circles. Estimated  $y$  values are plotted on the  $y$ -axis for each non-duplicated marker and shown as black circles. The horizontal dotted line equals the maximum expected value of  $y$  (0.67) without interference. Loci with low  $y$  values are expected to locate proximal to centromeres, and higher values are expected for loci with increasing distance from centromeres. Overall, these plots serve to effectively distinguish acrocentric (e.g., LG So1) from metacentric (e.g., LG So2) chromosomes and define regions that include the centromere.

Comparison to an existing but less dense map for sockeye salmon served to validate and name LGs (File S1). In two instances, two of our linkage groups matched the same LG in the map of Everett *et al.* (2012); these were denoted by A and B after the LG number. Two LGs corresponded to LG9 in Everett *et al.* (2012) and syntenic comparison with rainbow trout identified these LGs to be the two female sockeye salmon sex chromosomes  $X_1$  and  $X_2$  (File S1); these were named So9A\_ $(X_2)$  and So9B\_ $(X_1)$  following previous descriptions (Thorgaard 1978). For the LGs So18A and So18B pair, So18B does not have a centromere (Figure 3); here, we consider LGs So18A and So18B to be the two arms of a single metacentric chromosome (LG18 in Everett

*et al.* 2012). The total map length was 2839 cM and included 2640 nonduplicated and 605 duplicated loci (Table S3).

The gynogenetic diploid family was used to place centromeres; 2562 of the 2640 nonduplicated loci on the linkage map were successfully genotyped for the diploid progeny. Centromeric regions were located by plotting  $y$  values along the linkage map (Figure 3). Acrocentric chromosomes were characterized by a linear pattern of  $y$  along linkage groups (e.g., So1), and clearly distinguishable from metacentric chromosomes characterized by a V-shaped  $y$  plot (e.g., So3) with values below 0.10 defining centromeric regions. After centromere placement, the 30 LGs ( $2n = 60$ ) translated into a total of 102 chromosome arms

■ **Table 1 Pairing of homeologous chromosome arms in sockeye salmon**

Homeolog 1		Homeolog 2		No. of Paired Loci	Homeology in Rainbow Trout
LG	Arm (Region)	LG	Arm (Region)		
So2	a1 (2.9–3.2)	So5	a1 (0.0–6.5)	4	Omy07p–Omy18p
So3	a1 (1.1–5.4)	So14	a1 (5.4–28.8)	3	Omy05p–Omy02p
So8	a2 (92.6–100.1)	So23	a2 (105.3)	4	Omy21p–Omy15q
So11	a1 (8.6)	So18A	a1 (6.8)	1	NA
So15	a2 (101.1–102.5)	So21	a1 (2.2–3.7)	4	Omy17q–Omy13p <sup>a</sup>
So21	a2 (103.7)	So26	a1 (12.0–22.2)	4	NA

The linkage group region including the loci supporting a homeologous relationship is given as the start and end location in cM. The two right columns present syntenic comparisons for rainbow trout as inferred from alignment results (File S1; Table S1) and previous reports of homeologous pairs in rainbow trout (Phillips *et al.* 2006; Kodama *et al.* 2014).

<sup>a</sup> The synteny between So21 and rainbow trout chromosome Omy13p were only supported by syntenic reports in rainbow trout (Table S1).

(NF = 102; Table S3) which is within the range of previously reported karyotypes for sockeye salmon (NF = 100–104) (Thorgaard 1978; Phillips and Rab 2001).

### Distribution of retained duplicated regions

Duplicated loci were not randomly distributed across the genome. Mapping of two paralogs from 40 duplicated loci enabled identification of six pairs of homeologous regions located on 11 different LGs (Table 1). The majority of duplicated loci (457, 76%) mapped to these 11 LGs, including both arms on So21. Within these 11 LGs, duplicated loci represented between 22 and 66% of all loci and concentrated towards telomeres within distinct arms (red circles in Figure 3; Table S3). Twelve pairs of paralogs colocalized within 10 cM on the same LG and likely represent local duplication events that do not originate from the WGD (Waples *et al.* 2015). Another extended, but unpaired, region dominated by duplicated loci occurred on arm a1 of So27; remaining duplicated loci, possibly segmental duplications, were dispersed across the genome (Figure 3).

### Interference along chromosome arms

The number of observed recombination events for each arm reveals a pattern of strong, but incomplete, interference. Among haploid progeny, only 64 of 1902 (3.4%) observations showed two crossovers within a single arm (Table 2). Similarly, we observed 178 of 3777 (4.7%) arms with more than one crossover among the diploid progeny (Table 2). Further evidence for interference was revealed by a high fraction of distal loci with  $\gamma$  values above 0.67 (Figure 4).

We used the observed distribution of interchiasma distances to estimate the strength of interference across chromosomes. Estimates of  $\nu$  equaled the upper limit of 20 for five LGs (So9A<sub>-</sub>(X<sub>2</sub>), So9B<sub>-</sub>(X<sub>1</sub>), So18A, So25, and So26). When the upper limit of  $\nu$  in the searched parameter space was increased, the  $\nu$  estimates continued to equal the maximum allowed value (*i.e.*,  $\nu \rightarrow \infty$ ). Common to these five LGs is that they represent one chromosome arm with few, if any, double crossovers; this likely impeded the fitting of a gamma distribution for the few observed interchiasma distances (Table 2). Therefore, we do not report estimates of  $\nu$  for these LGs, but conclude that the data signal strong interference as well (Basu-Roy *et al.* 2013; Table S4). The average point estimate among remaining LGs ( $\nu = 7.3$ ) was considerably larger than the value expected without interference ( $\nu = 1$ ). These observations were further supported by low estimates of  $p$  ( $p = 0.00$ – $0.16$ ) (Table S4) indicating that most crossovers are affected by interference (Falque *et al.* 2009). Figure 5 shows estimates of  $\nu$  for each LG. All LGs show positive interference, although CIs for So4, So16, and So28 include one, the expected value with no interference. Further, CIs around  $\nu$  did not include the genome-wide average for seven LGs (So5, So6,

So13, So15, So17, So27, So28), suggesting that strength of interference varies among chromosomes (Figure 5). No clear correlation was found when plotting  $\nu$  as a function of genetic length of each LG (Figure S1).

We detected striking drops of  $\gamma$  values toward telomeric regions of some LGs; this pattern was particularly pronounced on So2 (arm a2) and So22 (arm a1; Figure 3). These observations result from an increased number of gynogenetic diploid progeny that show two recombinations along these arms (Table 2) because loci located distal to a second chiasma will reduce estimates of  $\gamma$ . Arm a2 of So2 showed an increased number of double crossovers in the haploids as well, whereas this was not the case for So22 arm a1 (Table 2). In general, occurrence of double crossovers was more common on longer chromosome arms, but absence of double crossovers in some of the longer arms suggest that genetic length is not the only factor determining the frequency of multiple crossovers (Figure 6).

### Interference across centromeres

We estimated the Spearman correlation coefficient ( $\rho$ ) between distances from centromeres to the nearest chiasma location on both arms for the 20 metacentric LGs. For the haploid data, no values of  $\rho$  were significantly different from 0, whereas estimates for diploids were significantly negative for  $d < 15$  cM (Figure 7). Nevertheless, the haploid data showed a similar pattern of negative correlations for  $d < 15$  cM. Lack of significant correlations in the haploid family may be due to reduced statistical power from the limited number of observations; the similar patterns observed between the haploid and diploid families lead us to conclude that interference does affect crossover patterns across centromeres.

## DISCUSSION

We demonstrate the power of using both haploid and diploid gynogenetic offspring from a single-pair mating to describe detailed patterns of recombination in a duplicated salmonid genome. Results reveal extensive distal regions dominated by duplicated loci as well as strong, but varying, levels of interference for most LGs. Our use of a single female parent comes with some limitations for drawing general conclusions: our data only reflect information from heterozygous loci in the single female parent. Likewise, variability among populations, individuals, and sexes are not captured (*c.f.*, Johnston *et al.* 2015).

### Extensive subtelomeric regions remain duplicated in sockeye salmon

Linkage mapping revealed the occurrence of numerous regions with high levels of retained sequence identity between putative homeologs in sockeye salmon. These observations are consistent with an ongoing rediploidization of the sockeye salmon genome where some homeologous chromosomes still undergo residual tetrasomic inheritance (May *et al.*

■ **Table 2** Observed numbers of haploid and diploid gynogenetic offspring with zero, one, or two crossovers are given for each linkage group and for each arm

LG	Chromosome Type	Linkage Group Arm Length (cM)		Number of Offspring with 0, 1, or 2 Crossovers																			
				Gynogenetic Haploids						Gynogenetic Diploids													
		Incl. Duplicated Loci		Excl. Duplicated Loci		Entire Linkage Group		Arm 1		Arm 2		Entire Linkage Group		Arm 1		Arm 2							
		Arm 1	Arm 2	Arm 1	Arm 2	0	1	2	0	1	2	0	1	2	0	1	2	0	1	2			
So2	M	49	66	47	66	22	47	20	53	40	0	49	34	9	0	2	65	4	73	0	0	66	10
So3	M	58	58	56	58	22	50	20	45	47	1	51	42	0	2	1	65	3	72	2	2	67	6
So4	M	45	71	45	71	22	50	19	67	26	0	45	45	3	1	2	61	4	68	5	1	65	7
So5	M	55	55	50	55	22	47	23	57	36	0	51	40	2	2	13	62	14	63	0	3	74	0
So6	M	48	53	48	53	25	47	19	53	40	0	55	37	1	0	2	70	2	74	1	1	72	3
So7	M	50	61	50	61	20	50	22	57	36	0	55	34	4	3	7	58	10	64	3	3	67	4
So8	M	46	55	46	44	25	52	16	68	25	0	72	21	0	0	8	65	2	73	0	6	68	3
So10	M	54	68	54	68	19	45	24	50	43	0	48	38	7	3	6	60	5	70	1	8	61	7
So11	M	55	61	42	61	22	47	21	52	41	0	48	41	4	1	9	64	14	63	0	1	70	3
So12	M	56	55	56	55	25	43	23	49	44	0	49	42	2	1	2	64	4	69	3	1	68	5
So13	M	61	42	61	42	24	48	19	56	34	3	62	31	0	3	12	48	4	60	9	16	59	1
So14	M	70	56	44	56	26	43	24	64	28	1	67	26	0	2	6	61	9	68	0	2	66	9
So15	M	54	48	54	46	25	50	16	51	39	3	56	37	0	2	5	60	2	65	6	9	68	0
So19	M	56	40	56	40	29	46	18	55	38	0	68	25	0	1	22	53	3	74	0	21	55	1
So20	M	69	54	69	54	19	51	19	59	32	2	59	33	1	0	0	62	0	71	4	0	64	8
So21	M	51	53	42	52	32	38	23	62	31	0	67	26	0	0	19	58	19	58	0	0	77	0
So22	M	76	51	76	51	23	42	25	45	47	1	61	32	0	2	0	59	2	61	12	2	71	2
So23	M	49	57	49	57	20	55	18	54	39	0	43	50	0	3	3	69	3	72	0	7	70	0
So24	M	63	53	63	53	21	47	23	48	44	1	54	38	1	1	1	67	1	74	2	2	69	5
So27	M	72	68	55	68	19	48	24	50	41	2	41	50	2	1	4	66	5	72	0	1	70	5
So28	M	8	15	8	15	74	19	0	85	8	0	82	11	0	37	32	8	55	22	0	51	26	0
So18A	M (arm 1)	53	—	52	—	57	35	0	—	—	—	—	—	—	5	72	0	—	—	—	—	—	—
So18B	M (arm 2)	—	—	—	—	83	9	1	—	—	—	—	—	—	—	—	—	—	—	—	—	—	—
So1	A	69	—	69	—	40	47	6	—	—	—	—	—	—	4	63	6	—	—	—	—	—	—
So16	A	72	—	72	—	56	37	0	—	—	—	—	—	—	6	57	8	—	—	—	—	—	—
So17	A	42	—	42	—	55	38	0	—	—	—	—	—	—	4	58	15	—	—	—	—	—	—
So25	A	63	—	63	—	39	51	3	—	—	—	—	—	—	7	57	10	—	—	—	—	—	—
So26	A	78	—	62	—	46	47	0	—	—	—	—	—	—	8	66	1	—	—	—	—	—	—
So9A_(X2)	A	65	—	65	—	38	52	3	—	—	—	—	—	—	5	56	9	—	—	—	—	—	—
So9B_(X1)	A	57	—	57	—	52	39	2	—	—	—	—	—	—	6	64	2	—	—	—	—	—	—

Chromosome type denotes metacentric (M) or acrocentric (A) chromosomes according to Everett *et al.* (2012) and Figure 3. Lengths of each chromosome arm are given for two linkage map versions; one including and one excluding duplicated loci. Cells with — indicate parameters that could not be estimated for the given LG for reasons given in the text. Linkage groups are ordered by chromosome type to facilitate comparison within and between metacentric and acrocentric chromosomes.

1979), a pattern that is shared among many extant species within the salmonid family (Allendorf *et al.* 2015).

We detected six pairs of homeologous regions dominated by duplicated loci as well as an unpaired region on the So27 arm a1. A total of eight conserved pairs of duplicated homeologs have been described for a range of *Oncorhynchus* (Kodama *et al.* 2014) and *Salmo* (Lien *et al.* 2011) species. Although we cannot rule out the possibility that some of these regions have fully diploidized in sockeye salmon based on these data, a more parsimonious explanation is that we have failed to identify another two pairs because we considered too few meiosis (progeny).

Many genomic studies of polyploids, including salmonids, exclude duplicates to avoid inclusion of loci that deviate from standard assumptions such as Hardy-Weinberg proportions (Poland *et al.* 2012; Gagnaire *et al.* 2013; Hyma and Fay 2013; Limborg *et al.* 2014). Consequently, extended regions that remain duplicated are not included in most population genomic studies. The filtering of duplicated loci is especially pertinent to polyploid species where extended telomeric regions are excluded in downstream scans for selection. Important genes located in these duplicated regions will remain undetected, leading to

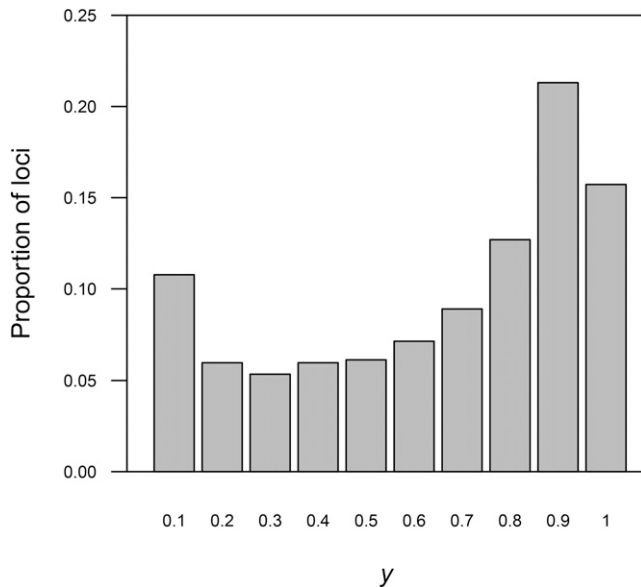
an incomplete understanding of the genetic basis of local adaptation (see discussion in Allendorf *et al.* 2015).

Finally, our study demonstrates how comparative mapping among species represents a powerful tool for validating *de novo* linkage maps in nonmodel species. Indeed, conserved restriction enzyme cut sites among genomes in related species make RAD sequencing, and related techniques, particularly useful for identifying orthologous chromosomal regions through comparative mapping (File S1); a feature that is expected to enrich mapping studies among related species.

### Recombination patterns reveal strong interference

Thorgaard *et al.* (1983) first reported strong interference across the salmonid genome based on data from only 10 allozyme loci, three of which had  $y$  values at or close to 1.0. We expand the evidence for strong interference by mapping 3245 loci, finding loci with  $y$  values approaching 1.0 on nearly all linkage groups. It is important to note that we only used nonduplicated loci for estimating  $y$ . Thus, the proportion of loci with  $y$  values above 0.67 is likely to be an underrepresentation of the true number (*cf.*, Lindner *et al.* 2000).



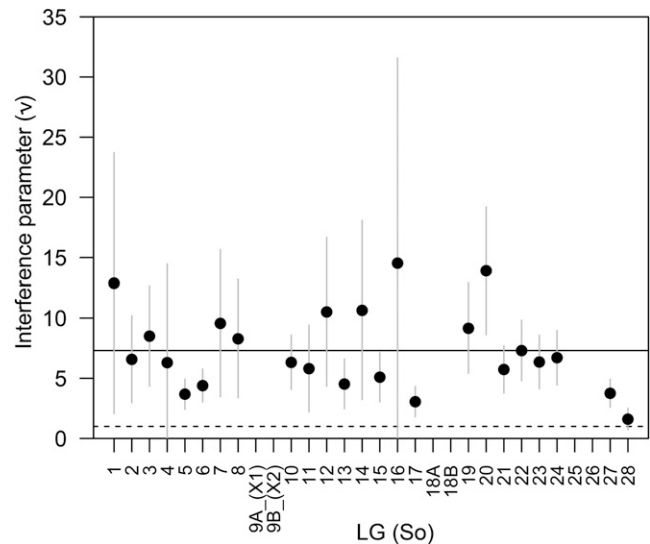


**Figure 4** Genome-wide distribution of  $y$  values estimated for all non-duplicated loci in the gynogenetic diploid family. Loci with values near zero are expected to be proximal to centromeres, and loci with higher values are expected to be more distally located. Values of  $y$  above 0.67 are only expected with the occurrence of positive crossover interference.

Interestingly, similar to our finding, Lindner *et al.* (2000) also observed an overrepresentation of loci with low values of  $y$  (see  $y \leq 0.1$  in Figure 4). This peak can be explained by stronger crossover suppression near centromeres, which has been observed in a number of model species (Koehler *et al.* 1996; Lamb *et al.* 2005; Rockmill *et al.* 2006). One explanation involves selection against crossovers proximal to the centromere that has been shown to destabilize meiotic segregation and increase occurrence of nondisjunction (Talbert and Henikoff 2010). Assuming an even genome coverage of loci, our observation of an increased number of loci with low  $y$  values supports a similar model of selection against crossovers proximal to centromeres in sockeye salmon.

Our study adds new insights about genome-wide interference in a salmonid genome by presenting the first quantitative estimates of the strength of interference across each chromosome. Positive interference for most, if not all, chromosomes described for sockeye salmon in this study is common to a range of other eukaryotes including plants (Lhuissier *et al.* 2007; Giraut *et al.* 2011) and mammals (Broman *et al.* 2002; Segura *et al.* 2013). Nevertheless, most existing data come from model species, and the strength of interference varies greatly among taxa (Giraut *et al.* 2011), illustrating the need for obtaining species-specific estimates. Importantly, we demonstrate that data from mapping studies that use genotyping by sequencing in nonmodel species can be used to obtain quantitative estimates of interference. Because no additional data are needed, we advocate a routine execution of interference analyses in future mapping studies. This will lead to a deeper understanding of variation across more taxa and of how recombination interference is affecting genome evolution in general.

Observations of more than one crossover, coupled with subtelomeric regions showing declining values of  $y$ , illustrate that interference is not complete, a pattern supported by observations in both haploid and diploid families. The occurrence of double crossovers was generally more common on longer chromosome arms (Figure 6). Our measurement of recombination length, without knowledge of the corresponding



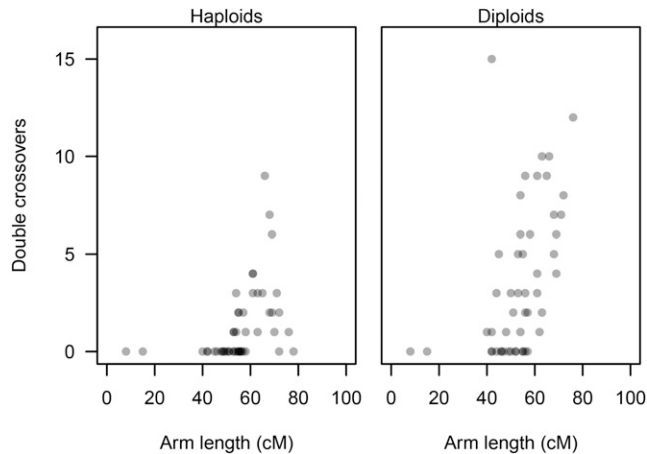
**Figure 5** Maximum-likelihood estimates of the interference parameter  $\nu$  from the gamma model (black circles). Vertical gray lines show the 95% C.I. around each  $\nu$  estimate. If interference does not affect crossover location, then  $\nu$  will take a value of 1.0 (horizontal dotted line). The genome-wide average ( $\nu = 7.3$ ) is shown by the solid horizontal line. Estimates of  $\nu$  were not plotted for six LGs (So9A\_(X<sub>2</sub>), So9B\_(X<sub>1</sub>), So18A, So18B, So25, and So26) because too few double crossovers on these linkage groups impeded reliable estimation of  $\nu$  (see text).

physical length, complicates interpretation. It is tempting to posit that interference simply erodes with chromosome arm length, increasing the chance of observing multiple crossovers for longer chromosomes (Broman *et al.* 2002; Giraut *et al.* 2011; Mary *et al.* 2014). However, significant outlier LGs belie this interpretation (see Table 2): LG So17 is a short acrocentric (42 cM), yet it has 15 double crossovers; So14 and So27 have two of the longest arms ( $\geq 70$  cM), yet they have no double crossovers. Clearly the recombination length of chromosome arms is not the only factor affecting interference, and recombination patterns are likely dictated by a complex blend of different meiotic mechanisms.

Varied strength of interference among chromosomes would have strong implications for interpreting genome data; unfortunately, there are little, if any, data on this issue in nonmodel taxa. Although no clear correlation between strength of interference and genetic distance is observed here, the two shortest LGs, So17 and So28, also have the lowest estimates of  $\nu$  (Table S4). Evidence from yeast and humans also shows that interference is weaker on small chromosomes (Kaback *et al.* 1992; Kaback 1996). However, our observation of interchromosomal differences has to be interpreted with care. All LGs are shorter than 150 cM and contain few double crossovers that inevitably translate into uncertainties because  $\nu$  estimates are conditioned on the observation of interchiasma distances (Broman and Weber 2000). Nevertheless, we do detect a genome-wide pattern of strong, but incomplete, interference with some observed variation in the strength of interference among chromosomes; these results have important implications for the analyses of genomic data (see below).

### Interference occurs across centromeres

We found evidence that interference occurs across a region spanning  $\sim 15$  cM on either side of the centromere; this implies that crossovers occurring near the centromere affect recombination events on the opposite arm. Transcentromere interference has been reported in other



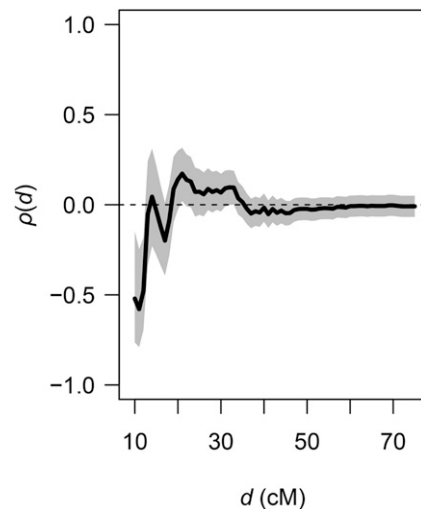
**Figure 6** Number of observed double crossovers plotted against arm length. Symbols are shown in transparent gray to highlight over plotting. Results are given for haploid and diploid families separately because observations for diploid offspring do not include duplicated regions.

species groups, including insects (Colombo and Jones 1997), mammals (Broman and Weber 2000; Mary *et al.* 2014), and fish (Demarest *et al.* 2011). In our data, the effect declines rapidly with increasing distance from the centromere and disappears at distances greater than 15 cM. This rapid decline of transcentromere interference contrasts with patterns observed in humans (Broman and Weber 2000) and pigs (Mary *et al.* 2014).

### Implications for analyzing genomic data

Recombination is an important evolutionary process that generates novel genetic variation. Compelling theoretical constructs predict an evolutionary advantage of increased recombination rates (Felsenstein 1974; Barton and Charlesworth 1998), and empirical evidence for this theory has been found in, for example, *Escherichia coli* (Cooper 2007) and *Drosophila melanogaster* (Presgraves 2005; Campos *et al.* 2014). Yet, it has proven nontrivial to broadly demonstrate such an effect because studies have been restricted to a few model species and because recombination rates vary among chromosomes and the few taxonomic groups studied (Cutter and Payseur 2013). In this study, we demonstrate how data generated for linkage mapping in nonmodel species can also be used to estimate interference. These methods can be used to estimate species-specific rates of interference whenever a linkage map is created, leading to a more complete understanding of how this fundamental meiotic process shapes genomic data across species.

Our results will also aid interpretation of new analyses facilitated by genomic data. One such method involves examining length distributions of genomic runs of homozygosity (ROH) to infer migration or inbreeding history (Pool and Nielsen 2009; Kirin *et al.* 2010; Harris and Nielsen 2013). The length of the ROH is affected by recombination patterns, because shorter runs are expected in regions with higher recombination rates. Interference is also expected to affect the length distribution of ROHs, especially if the strength of interference varies among the individuals and populations being compared (Broman and Weber 2000). The concrete effect of strong interference on these analyses remains unclear but deserves attention in future developments of these methods. A first step could include estimates of interference within each of the populations being compared; if the strength and pattern of interference are similar among



**Figure 7** Interference across centromeres. Estimates of the correlation function  $\rho(d) = \text{corr}(\chi_{a1}, \chi_{a2} | \max[\chi_{a1}, \chi_{a2}] \leq d)$  for different windows of genetic distance ( $d$ ) in both directions from the midpoint of defined centromeric regions. Estimates of  $\rho(d)$  were obtained for each integer value of  $d$  ranging from 10 to 75 cM. The gray area denotes the 95% C.I. around  $\rho(d)$ . Observations are for all diploid offspring and pooled across all 20 metacentric LGs.

populations, then it will be easier to justify conclusions based on ROH comparisons.

Assumptions of interference strength are crucial to genetic mapping functions. Models assuming different levels of interference have been shown to produce different results based on the same data (Zhao and Speed 1996). Our genome-wide estimate of the interference parameter ( $\nu = 7.3$ ) in sockeye salmon is closer to that assumed by the Carter-Falconer mapping model ( $\nu = 7.6$ ) than the more often used Haldane ( $\nu = 1.0$ ) and Kosambi ( $\nu = 2.6$ ) functions (Zhao and Speed 1996; Broman and Weber 2000). With the accumulation of more accurate estimates of species-specific interference levels it will be possible to improve species-specific mapping efforts; such improvements will have implications when mapping genes that control important phenotypic traits.

### ACKNOWLEDGMENTS

We thank Carita E. Pascal for assistance with molecular analyses. We also thank Darin Combs and colleagues for providing assistance and hatchery facilities for conducting the family crosses at Issaquah Hatchery (WA, USA). Wesley A. Larson and Lisa W. Seeb provided constructive comments on earlier drafts of this manuscript. M.T.L. was supported by the Danish Council for Independent Research's career program Sapere Aude (grant #12-126687). F.W.A. was partially supported by U.S. National Science Foundation grant DEB 1258203.

### LITERATURE CITED

- Allendorf, F. W., and G. H. Thorgaard, 1984 Tetraploidy and the evolution of salmonid fishes, pp. 1–53 in *Evolutionary Genetics of Fishes*, edited by Turner, B. J., Plenum Press, New York.
- Allendorf, F. W., and R. G. Danzmann, 1997 Secondary tetrasomic segregation of MDH-B and preferential pairing of homeologues in rainbow trout. *Genetics* 145: 1083–1092.
- Allendorf, F. W., J. E. Seeb, K. L. Knudsen, G. H. Thorgaard, and R. F. Leary, 1986 Gene-centromere mapping of 25 loci in rainbow-trout. *J. Hered.* 77: 307–312.

- Allendorf, F. W., S. Bassham, W. A. Cresko, M. T. Limborg, L. W. Seeb *et al.*, 2015 Effects of crossovers between homeologs on inheritance and population genomics in polyploid-derived salmonid fishes. *J. Hered.* 106: 217–227.
- Anderson, E., 1925 Crossing over in a case of attached X chromosomes in *Drosophila melanogaster*. *Genetics* 10: 403–417.
- Baird, N. A., P. D. Etter, T. S. Atwood, M. C. Currey, A. L. Shiver *et al.*, 2008 Rapid SNP discovery and genetic mapping using sequenced RAD markers. *PLoS One* 3: e3376.
- Barton, N. H., and B. Charlesworth, 1998 Why sex and recombination? *Science* 281: 1986–1990.
- Basu-Roy, S., F. Gauthier, L. Giraut, C. Mézard, M. Falque *et al.*, 2013 Hot regions of noninterfering crossovers coexist with a nonuniformly interfering pathway in *Arabidopsis thaliana*. *Genetics* 195: 769–779.
- Berthelot, C., F. Brunet, D. Chalopin, A. Juanchich, M. Bernard *et al.*, 2014 The rainbow trout genome provides novel insights into evolution after whole-genome duplication in vertebrates. *Nat. Commun.* 5: 3657.
- Brieuc, M. S., C. D. Waters, J. E. Seeb, and K. A. Naish, 2014 A dense linkage map for Chinook salmon (*Oncorhynchus tshawytscha*) reveals variable chromosomal divergence after an ancestral whole genome duplication event. *G3 (Bethesda)* 4: 447–460.
- Broman, K. W., and J. L. Weber, 2000 Characterization of human crossover interference. *Am. J. Hum. Genet.* 66: 1911–1926.
- Broman, K. W., L. B. Rowe, G. A. Churchill, and K. Paigen, 2002 Crossover interference in the mouse. *Genetics* 160: 1123–1131.
- Calderon, M. C., M. D. Rey, A. Cabrera, and P. Prieto, 2014 The subtelomeric region is important for chromosome recognition and pairing during meiosis. *Sci. Rep.* 4: 6488.
- Campos, J. L., D. L. Halligan, P. R. Haddrill, and B. Charlesworth, 2014 The relation between recombination rate and patterns of molecular evolution and variation in *Drosophila melanogaster*. *Mol. Biol. Evol.* 31: 1010–1028.
- Catchen, J., P. A. Hohenlohe, S. Bassham, A. Amores, and W. A. Cresko, 2013 Stacks: an analysis tool set for population genomics. *Mol. Ecol.* 22: 3124–3140.
- Chourrout, D., 1980 Thermal induction of diploid gynogenesis and triploidy in the eggs of the rainbow trout (*Salmo gairdneri* Richardson). *Reprod. Nutr. Dev.* 20: 727–733.
- Colombo, P. C., and G. H. Jones, 1997 Chiasma interference is blind to centromeres. *Heredity* 79: 214–227.
- Comai, L., 2005 The advantages and disadvantages of being polyploid. *Nat. Rev. Genet.* 6: 836–846.
- Cooper, T. F., 2007 Recombination speeds adaptation by reducing competition between beneficial mutations in populations of *Escherichia coli*. *PLoS Biol.* 5: e225.
- Cruickshank, T. E., and M. W. Hahn, 2014 Reanalysis suggests that genomic islands of speciation are due to reduced diversity, not reduced gene flow. *Mol. Ecol.* 23: 3133–3157.
- Cutter, A. D., and B. A. Payseur, 2013 Genomic signatures of selection at linked sites: unifying the disparity among species. *Nat. Rev. Genet.* 14: 262–274.
- Demarest, B. L., W. H. Horsley, E. E. Locke, K. Boucher, D. J. Grunwald *et al.*, 2011 Trans-centromere effects on meiotic recombination in the zebrafish. *Genetics* 187: 333–336.
- Elfstrom, C. M., C. T. Smith, and J. E. Seeb, 2006 Thirty-two single nucleotide polymorphism markers for high-throughput genotyping of sockeye salmon. *Mol. Ecol. Notes* 6: 1255–1259.
- Ellegren, H., L. Smeds, R. Burri, P. I. Olason, N. Backstrom *et al.*, 2012 The genomic landscape of species divergence in *Ficedula* flycatchers. *Nature* 491: 756–760.
- Everett, M. V., M. R. Miller, and J. E. Seeb, 2012 Meiotic maps of sockeye salmon derived from massively parallel DNA sequencing. *BMC Genomics* 13: 521.
- Falque, M., L. K. Anderson, S. M. Stack, F. Gauthier, and O. C. Martin, 2009 Two types of meiotic crossovers coexist in maize. *Plant Cell* 21: 3915–3925.
- Felsenstein, J., 1974 The evolutionary advantage of recombination. *Genetics* 78: 737–756.
- Gagnaire, P. A., E. Normandeau, S. A. Pavey, and L. Bernatchez, 2013 Mapping phenotypic, expression and transmission ratio distortion QTL using RAD markers in the Lake Whitefish (*Coregonus clupeaformis*). *Mol. Ecol.* 22: 3036–3048.
- Gauthier, F., O. C. Martin, and M. Falque, 2011 CODA (crossover distribution analyzer): quantitative characterization of crossover position patterns along chromosomes. *BMC Bioinformatics* 12: 27.
- Giraut, L., M. Falque, J. Drouaud, L. Pereira, O. C. Martin *et al.*, 2011 Genome-wide crossover distribution in *Arabidopsis thaliana* meiosis reveals sex-specific patterns along chromosomes. *PLoS Genet.* 7: e1002354.
- Harris, K., and R. Nielsen, 2013 Inferring demographic history from a spectrum of shared haplotype lengths. *PLoS Genet.* 9: e1003521.
- Hyma, K. E., and J. C. Fay, 2013 Mixing of vineyard and oak-tree ecotypes of *Saccharomyces cerevisiae* in North American vineyards. *Mol. Ecol.* 22: 2917–2930.
- Johnston, S. E., J. Slate, and J. M. Pemberton, 2015 A genomic region containing RNF212 is associated with sexually-dimorphic recombination rate variation in wild Soay sheep (*Ovis aries*). *bioRxiv* DOI: <http://dx.doi.org/10.1101/024869>.
- Jones, F. C., M. G. Grabherr, Y. F. Chan, P. Russell, E. Mauceli *et al.*, 2012 The genomic basis of adaptive evolution in threespine sticklebacks. *Nature* 484: 55–61.
- Kaback, D. B., 1996 Chromosome-size dependent control of meiotic recombination in humans. *Nat. Genet.* 13: 20–21.
- Kaback, D. B., V. Guacci, D. Barber, and J. W. Mahon, 1992 Chromosome size-dependent control of meiotic recombination. *Science* 256: 228–232.
- Kirin, M., R. McQuillan, C. S. Franklin, H. Campbell, P. M. McKeigue *et al.*, 2010 Genomic runs of homozygosity record population history and consanguinity. *PLoS One* 5: e13996.
- Kodama, M., M. S. Brieuc, R. H. Devlin, J. J. Hard, and K. A. Naish, 2014 Comparative mapping between Coho Salmon (*Oncorhynchus kisutch*) and three other salmonids suggests a role for chromosomal rearrangements in the retention of duplicated regions following a whole genome duplication event. *G3 (Bethesda)* 4: 1717–1730.
- Koehler, K. E., C. L. Boulton, H. E. Collins, R. L. French, K. C. Herman *et al.*, 1996 Spontaneous X chromosome MI and MII nondisjunction events in *Drosophila melanogaster* oocytes have different recombinational histories. *Nat. Genet.* 14: 406–414.
- Komen, H., and G. H. Thorgaard, 2007 Androgenesis, gynogenesis and the production of clones in fishes: A review. *Aquaculture* 269: 150–173.
- Lamb, N. E., S. L. Sherman, and T. J. Hassold, 2005 Effect of meiotic recombination on the production of aneuploid gametes in humans. *Cytogenet. Genome Res.* 111: 250–255.
- Lhuissier, F. G., H. H. Offenber, P. E. Wittich, N. O. Vischer, and C. Heyting, 2007 The mismatch repair protein MLH1 marks a subset of strongly interfering crossovers in tomato. *The Plant Cell Online* 19: 862–876.
- Lien, S., L. Gidskehaug, T. Moen, B. J. Hayes, P. R. Berg *et al.*, 2011 A dense SNP-based linkage map for Atlantic salmon (*Salmo salar*) reveals extended chromosome homeologies and striking differences in sex-specific recombination patterns. *BMC Genomics* 12: 615.
- Limborg, M. T., R. K. Waples, J. E. Seeb, and L. W. Seeb, 2014 Temporally isolated lineages of pink salmon reveal unique signatures of selection on distinct pools of standing genetic variation. *J. Hered.* 105: 741–751.
- Lindner, K. R., J. E. Seeb, C. Habicht, K. L. Knudsen, E. Kretschmer *et al.*, 2000 Gene-centromere mapping of 312 loci in pink salmon by half-tetrad analysis. *Genome* 43: 538–549.
- Mable, B. K., 2013 Polyploids and hybrids in changing environments: Winners or losers in the struggle for adaptation. *Heredity* 110: 95–96.
- Mary, N., H. Barasc, S. Ferchaud, Y. Billon, F. Meslier *et al.*, 2014 Meiotic recombination analyses of individual chromosomes in male domestic pigs (*Sus scrofa domestica*). *PLoS One* 9: e99123.
- Mather, K., 1938 Crossing-over. *Biol. Rev. Camb. Philos. Soc.* 13: 252–292.
- May, B., and M. E. Delany, 2015 Meiotic models to explain classical-linkage, pseudolinkage, and chromosomal pairing in tetraploid derivative salmonid genomes: II. Wright is still right. *J. Hered.* pii: esv056.
- May, B., J. E. Wright, and M. Stoneking, 1979 Joint segregation of biochemical loci in Salmonidae: Results from experiments with *Salvelinus* and review of the literature on other species. *J. Fish. Res. Board Can.* 36: 1114–1128.

- Miller, M. R., J. P. Brunelli, P. A. Wheeler, S. X. Liu, C. E. Rexroad *et al.*, 2012 A conserved haplotype controls parallel adaptation in geographically distant salmonid populations. *Mol. Ecol.* 21: 237–249.
- Ohno, S., 1970 The enormous diversity in genome sizes of fish as a reflection of nature's extensive experiments with gene duplication. *Trans. Am. Fish. Soc.* 99: 120–130.
- Otto, S. P., and T. Lenormand, 2002 Resolving the paradox of sex and recombination. *Nat. Rev. Genet.* 3: 252–261.
- Parisod, C., R. Holderegger, and C. Brochmann, 2010 Evolutionary consequences of autopolyploidy. *New Phytol.* 186: 5–17.
- Phillips, R., and P. Rab, 2001 Chromosome evolution in the Salmonidae (Pisces): an update. *Biol. Rev. Camb. Philos. Soc.* 76: 1–25.
- Phillips, R., K. Nichols, J. DeKoning, M. Morasch, K. Keatley *et al.*, 2006 Assignment of rainbow trout linkage groups to specific chromosomes. *Genetics* 174: 1661–1670.
- Poland, J. A., P. J. Brown, M. E. Sorrells, and J. L. Jannink, 2012 Development of high-density genetic maps for barley and wheat using a novel two-enzyme genotyping-by-sequencing approach. *PLoS One* 7: e32253.
- Pool, J. E., and R. Nielsen, 2009 Inference of historical changes in migration rate from the lengths of migrant tracts. *Genetics* 181: 711–719.
- Presgraves, D. C., 2005 Recombination enhances protein adaptation in *Drosophila melanogaster*. *Curr. Biol.* 15: 1651–1656.
- Renaut, S., C. Grassa, S. Yeaman, B. Moyers, Z. Lai *et al.*, 2013 Genomic islands of divergence are not affected by geography of speciation in sunflowers. *Nat. Commun.* 4: 1827.
- Rockmill, B., K. Voelkel-Meiman, and G. S. Roeder, 2006 Centromere-proximal crossovers are associated with precocious separation of sister chromatids during meiosis in *Saccharomyces cerevisiae*. *Genetics* 174: 1745–1754.
- Roesti, M., D. Moser, and D. Berner, 2013 Recombination in the threespine stickleback genome—patterns and consequences. *Mol. Ecol.* 22: 3014–3027.
- Seeb, J. E., and L. W. Seeb, 1986 Gene-mapping of isozyme loci in chum salmon. *J. Hered.* 77: 399–402.
- Segura, J., L. Ferretti, S. Ramos-Onsins, L. Capilla, M. Farré *et al.*, 2013 Evolution of recombination in eutherian mammals: insights into mechanisms that affect recombination rates and crossover interference. *Proc. R. Soc. Lond. B Biol. Sci.* 20131945: 280.
- Storer, C. G., C. E. Pascal, S. B. Roberts, W. D. Templin, L. W. Seeb *et al.*, 2012 Rank and order: Evaluating the performance of SNPs for individual assignment in a non-model organism. *PLoS One* 7: e49018.
- Sturtevant, A. H., 1915 The behavior of the chromosomes as studied through linkage. *Z. Indukt. Abstamm. Vererbungslehre* 13: 234–287.
- Talbert, P. B., and S. Henikoff, 2010 Centromeres convert but don't cross. *PLoS Biol.* 8: 523.
- Thorgaard, G. H., 1978 Sex-chromosomes in sockeye salmon—Y-Auto-some fusion. *Can. J. Genet. Cytol.* 20: 349–354.
- Thorgaard, G. H., F. W. Allendorf, and K. L. Knudsen, 1983 Gene-centromere mapping in rainbow trout: high interference over long map distances. *Genetics* 103: 771–783.
- Tine, M., H. Kuhl, P.-A. Gagnaire, B. Louro, E. Desmarais *et al.*, 2014 European sea bass genome and its variation provide insights into adaptation to euryhalinity and speciation. *Nat. Commun.* 5: 5770.
- Waples, R. K., L. W. Seeb, and J. E. Seeb, 2015 Linkage mapping with paralogs exposes regions of residual tetrasomic inheritance in chum salmon (*Oncorhynchus keta*). *Mol. Ecol. Resour.* DOI: 10.1111/1755-0998.12394.
- Wright, J. E., K. Johnson, A. Hollister, and B. May, 1983 Meiotic models to explain classical linkage, pseudolinkage, and chromosome pairing in tetraploid derivative salmonid genomes, pp. 239–260 in *Isozymes: Current Topics in Biological and Medical Research*, edited by Rattazzi, M. C., J. G. Scandalios, and G. S. Whitt. Alan R. Liss, New York.
- Wu, Y., P. R. Bhat, T. J. Close, and S. Lonardi, 2008 Efficient and accurate construction of genetic linkage maps from the minimum spanning tree of a graph. *PLoS Genet.* 4: e1000212.
- Zhao, H., and T. P. Speed, 1996 On genetic map functions. *Genetics* 142: 1369–1377.

Communicating editor: W. S. Davidson