

Technical University of Denmark



Direct visualization of chemical and thermo-remanent magnetization of pseudo-single-domain magnetite grains and the implications for reliable paleomagnetic signal acquisition

Almeida, T.; Muxworthy, A.R.; Kasama, Takeshi; Williams, W.; Kovács, A.; Dunin-Borkowski, R.; Hansen, Thomas Willum

Published in:

Proceedings of the 2015 American Geophysical Union Fall Meeting

Publication date:

2015

Document Version

Peer reviewed version

[Link back to DTU Orbit](#)

Citation (APA):

Almeida, T., Muxworthy, A. R., Kasama, T., Williams, W., Kovács, A., Dunin-Borkowski, R., & Hansen, T. W. (2015). Direct visualization of chemical and thermo-remanent magnetization of pseudo-single-domain magnetite grains and the implications for reliable paleomagnetic signal acquisition. In Proceedings of the 2015 American Geophysical Union Fall Meeting [62377]

DTU Library

Technical Information Center of Denmark

General rights

Copyright and moral rights for the publications made accessible in the public portal are retained by the authors and/or other copyright owners and it is a condition of accessing publications that users recognise and abide by the legal requirements associated with these rights.

- Users may download and print one copy of any publication from the public portal for the purpose of private study or research.
- You may not further distribute the material or use it for any profit-making activity or commercial gain
- You may freely distribute the URL identifying the publication in the public portal

If you believe that this document breaches copyright please contact us providing details, and we will remove access to the work immediately and investigate your claim.

Abstract #62377

Direct visualization of chemical and thermo-remnant magnetization of pseudo-single-domain magnetite grains and the implications for reliable paleomagnetic signal acquisition

Trevor Almeida¹, Adrian R Muxworthy², Takeshi Kasama³, Wyn Williams⁴, András Kovács⁵, Rafal Dunin-Borkowski⁵ and Thomas W Hansen³, (1)Imperial College London, London, United Kingdom, (2)Imperial College London, Earth Science and Engineering, London, United Kingdom, (3)Technical University of Denmark, Kongens Lyngby, Denmark, (4)University of Edinburgh, Edinburgh, United Kingdom, (5)Forschungszentrum Julich GmbH, Julich, Germany

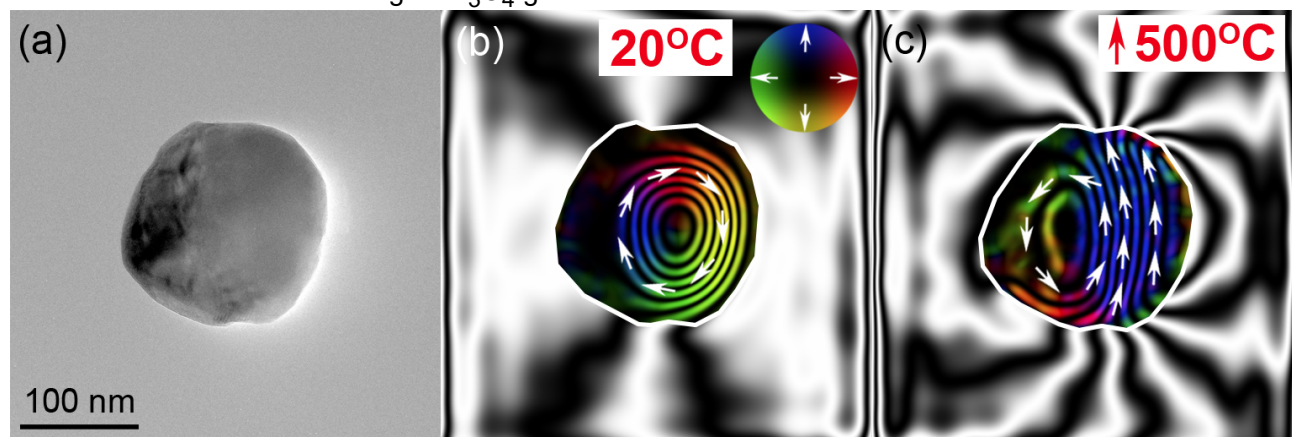
Abstract Text:

In order to reliably interpret paleomagnetic measurements, the mechanisms of chemical remanent magnetization (CRM) and thermoremanent magnetization (TRM) must be fully understood. Currently, most models of CRM and TRM processes only exist for the smallest, uniformly magnetized grains, termed single domain (SD). However, the magnetic signal from rocks is often dominated by slightly larger grains containing non-uniform magnetization states, termed pseudo-SD (PSD) grains.

Magnetite (Fe_3O_4) is the most magnetic naturally occurring mineral on Earth, carrying the dominant magnetic signature in rocks and providing a critical tool in paleomagnetism. The oxidation of Fe_3O_4 to other iron oxides, such as maghemite ($\gamma\text{-Fe}_2\text{O}_3$) and hematite ($\alpha\text{-Fe}_2\text{O}_3$), is of particular interest as it influences the preservation of remanence of the Earth's magnetic field by Fe_3O_4 . Further, TRM in Fe_3O_4 grains is acquired in the direction of the ambient geomagnetic field as they cool below their Curie temperature (T_C) of ~ 580 °C. The latest transmission electron microscopy (TEM) techniques like electron holography and environmental TEM (ETEM) allows for the imaging of magnetization in nano-scale minerals during *in situ* heating under vacuum and controlled atmospheres.

In the present study, synthetic Fe_3O_4 particles in the PSD size range (< 200 nm) were heated *in situ* in an ETEM under an O_2 atmosphere. Close examination of Fe_3O_4 particles after *in situ* heating revealed surface degradation, whilst electron energy-loss spectroscopy confirmed their oxidation. The effect of CRM was visualized using electron holography, in the form of reconstructed magnetic induction maps, where the oxidized grains exhibited a loss of overall remanence and change in remanent direction.

The thermomagnetic behavior of Fe_3O_4 particles in the PSD size range is also investigated using off-axis electron holography. Magnetic induction maps, which are recorded during *in situ* heating up to above the T_C , reveal the PSD nature of several Fe_3O_4 grains by visualizing their vortex domain states. The vortex states in small Fe_3O_4 grains (Fig. 1a & b) are shown to rotate or collapse into a single-domain state close to its unblocking temperature (Fig. 1c), rather than remaining thermally stable as seen in the vortex states of larger Fe_3O_4 grains.



Final Paper##: GP51C-01

Title: Direct visualization of chemical and thermo-remnant magnetization of pseudo-single-domain magnetite grains and the implications for reliable paleomagnetic signal acquisition

Submitter's E-mail Address: trevor.almeida0@gmail.com

Preferred Presentation Format: Assigned by Program Committee (Oral or Poster)

Invited 1

First Presenting Author

Presenting Author

Trevor Almeida

Primary Email: trevor.almeida0@gmail.com

Phone: 020 759 49983

Affiliation(s):

Imperial College London
London SW7 2AZ (United Kingdom)

Student: No

Second Author

Adrian R Muxworthy

Primary Email: adrian.muxworthy@imperial.ac.uk

Phone: 442075946442

Affiliation(s):

Imperial College London
Earth Science and Engineering
London (United Kingdom)

Student: No

Third Author

Takeshi Kasama

Primary Email: takeshi.kasama@cen.dtu.dk

Affiliation(s):

Technical University of Denmark
Kongens Lyngby (Denmark)

Student: No

Fourth Author

Wyn Williams

Primary Email: wyn.williams@ed.ac.uk

Phone: 441316504909

Affiliation(s):

University of Edinburgh
Edinburgh (United Kingdom)

Student: No
Fifth Author

András Kovács

Primary Email: a.kovacs@fz-juelich.de

Affiliation(s):

Forschungszentrum Julich GmbH
Julich (Germany)

Student: No
Sixth Author

Rafal Dunin-Borkowski

Primary Email: rafaldb@gmail.com

Affiliation(s):

Forschungszentrum Julich GmbH
Julich (Germany)

Student: No
Seventh Author

Thomas W Hansen

Primary Email: thomas.w.hansen@cen.dtu.dk

Affiliation(s):

Technical University of Denmark
Kongens Lyngby (Denmark)

Student: No