



## Offshore wind farm wake modelling with focus on cluster scales

**Hasager, Charlotte Bay; Badger, Merete; Pena Diaz, Alfredo; Badger, Jake; di Bella, Alessandro; Volker, Patrick**

*Publication date:*  
2015

*Document Version*  
Peer reviewed version

[Link back to DTU Orbit](#)

*Citation (APA):*

Hasager, C. B., Badger, M., Pena Diaz, A., Badger, J., di Bella, A., & Volker, P. (2015). Offshore wind farm wake modelling with focus on cluster scales [Sound/Visual production (digital)]. EWEA Technology Workshop, Helsinki, Finland, 02/06/2015

## DTU Library

Technical Information Center of Denmark

---

### General rights

Copyright and moral rights for the publications made accessible in the public portal are retained by the authors and/or other copyright owners and it is a condition of accessing publications that users recognise and abide by the legal requirements associated with these rights.

- Users may download and print one copy of any publication from the public portal for the purpose of private study or research.
- You may not further distribute the material or use it for any profit-making activity or commercial gain
- You may freely distribute the URL identifying the publication in the public portal

If you believe that this document breaches copyright please contact us providing details, and we will remove access to the work immediately and investigate your claim.

**Charlotte Hasager, Merete Badger, Alfredo Peña,  
Jake Badger, Alessandro di Bella, Patrick Volker**

Offshore wind farm wake modelling with focus on cluster scales

EWEA Technology Workshop: Resource Assessment 2015, 2-3 June 2015, Helsinki

## Wakes: where are we now?

For this topic, we will be looking for abstracts addressing the following points:

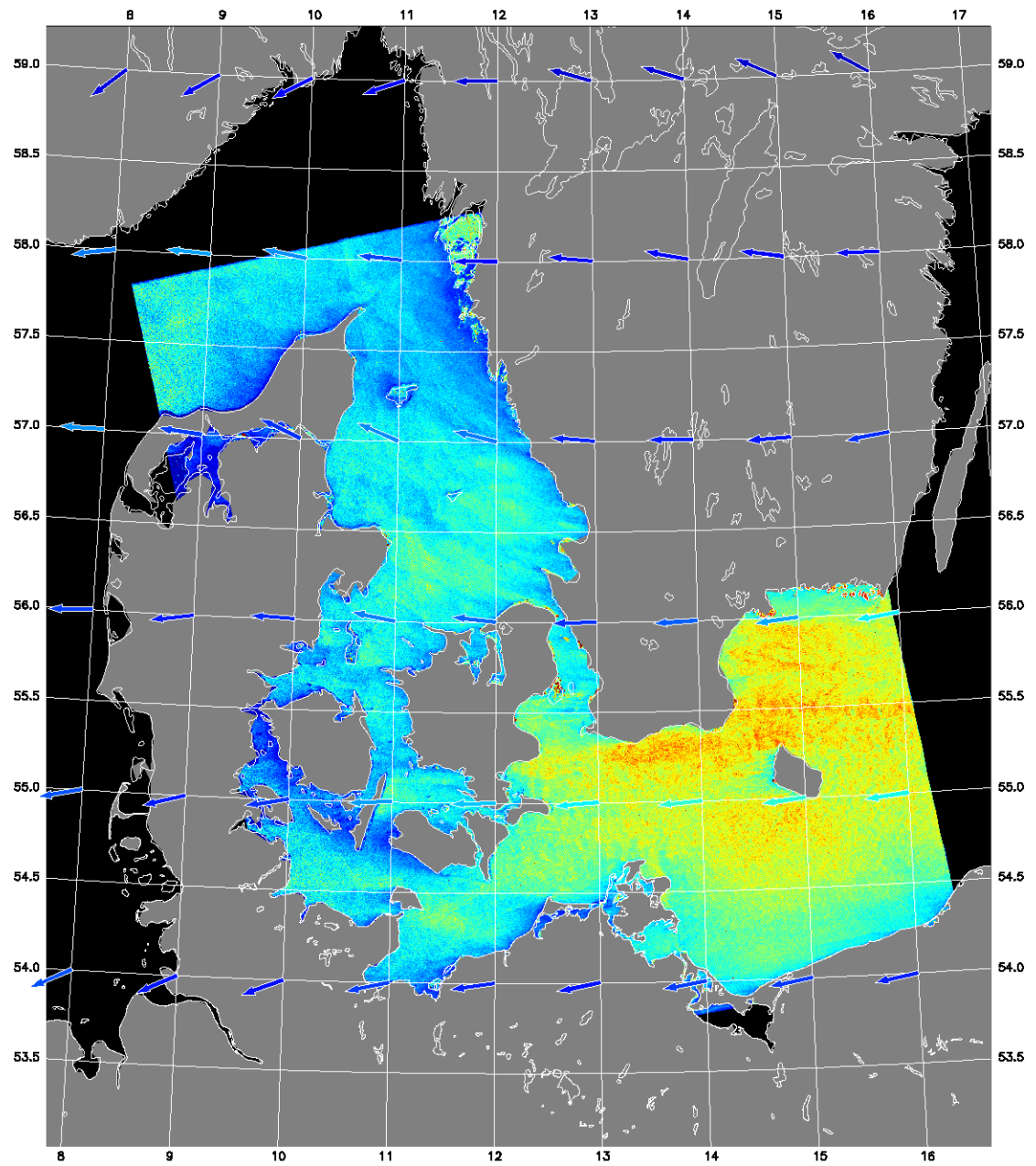
- External wakes, especially offshore
- Validation/comparison of model results

## Motivation

- The planned development of many large new offshore wind farms has increased the need for further understanding of the expected influence of wind farm wake between wind farms.

## Data source

- In order to investigate external wake effects we have chosen to use observations from satellite remote sensing radar images.
- The study is based on images from Envisat Advanced Synthetic Aperture Radar (ASAR) observed during the years 2002-2012.
- These images cover 400-km swaths and the spatial resolution of derived wind fields is 1 km.



Wind Speed (m/s)

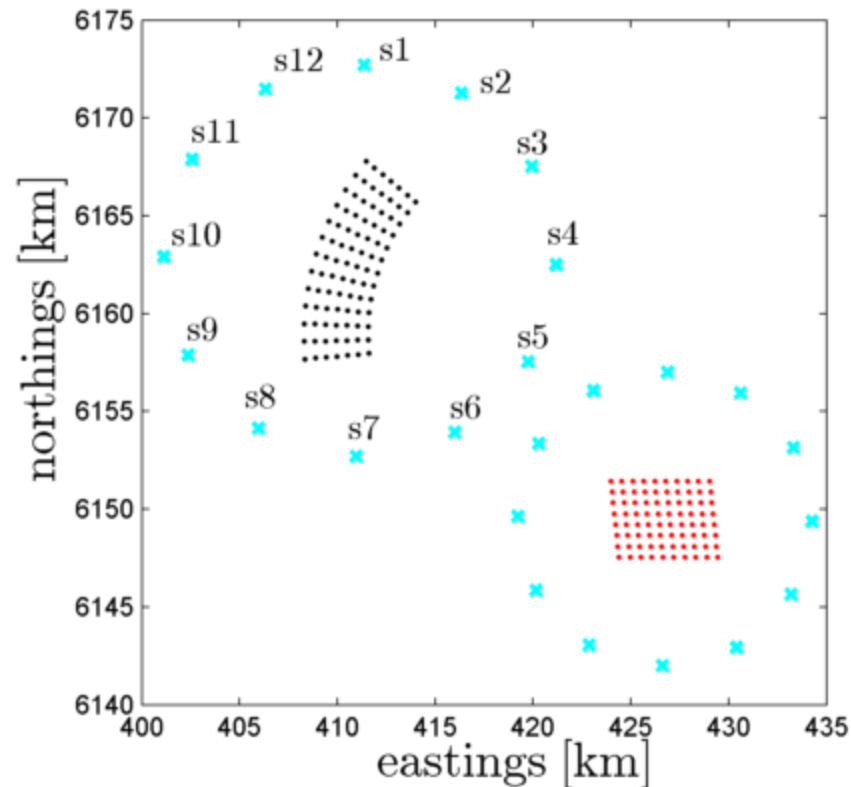


Wind Speed (knots)

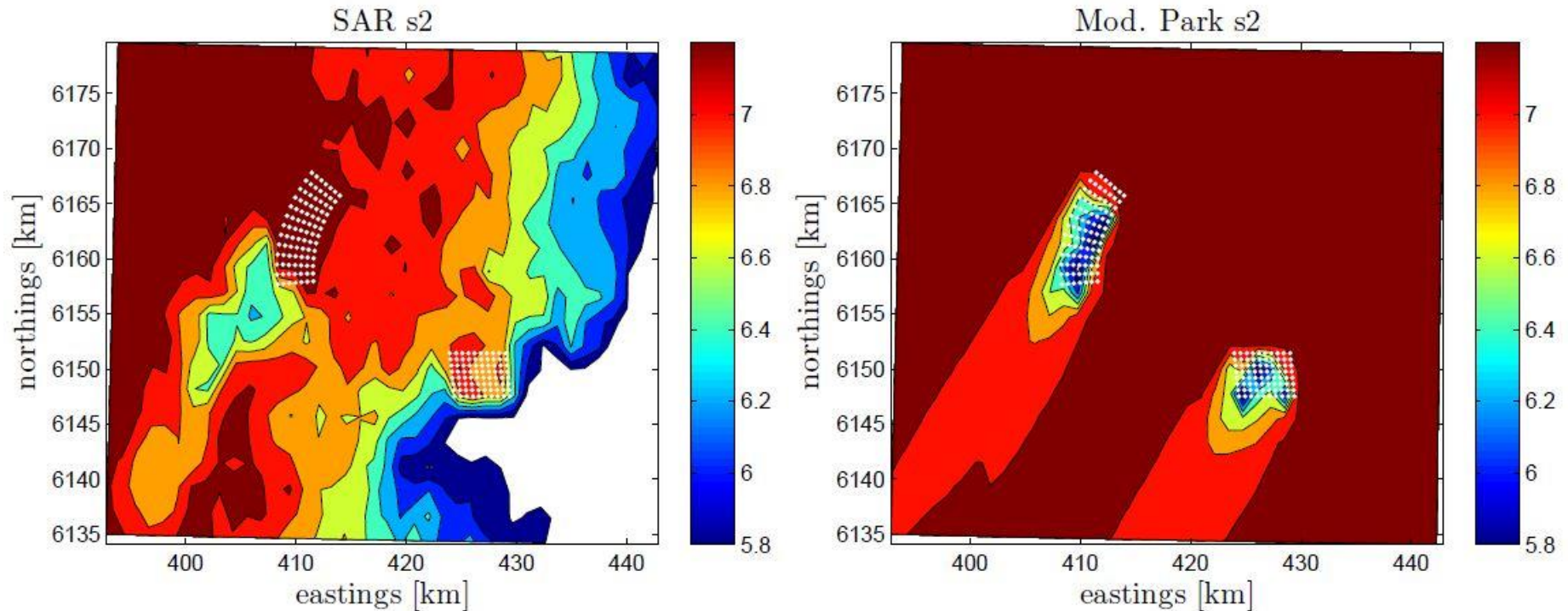


## Geo-located averaging

- The wind farm wake is quantified within 12 directional sectors at Horns Rev 1 and 2 wind farms in the North Sea.



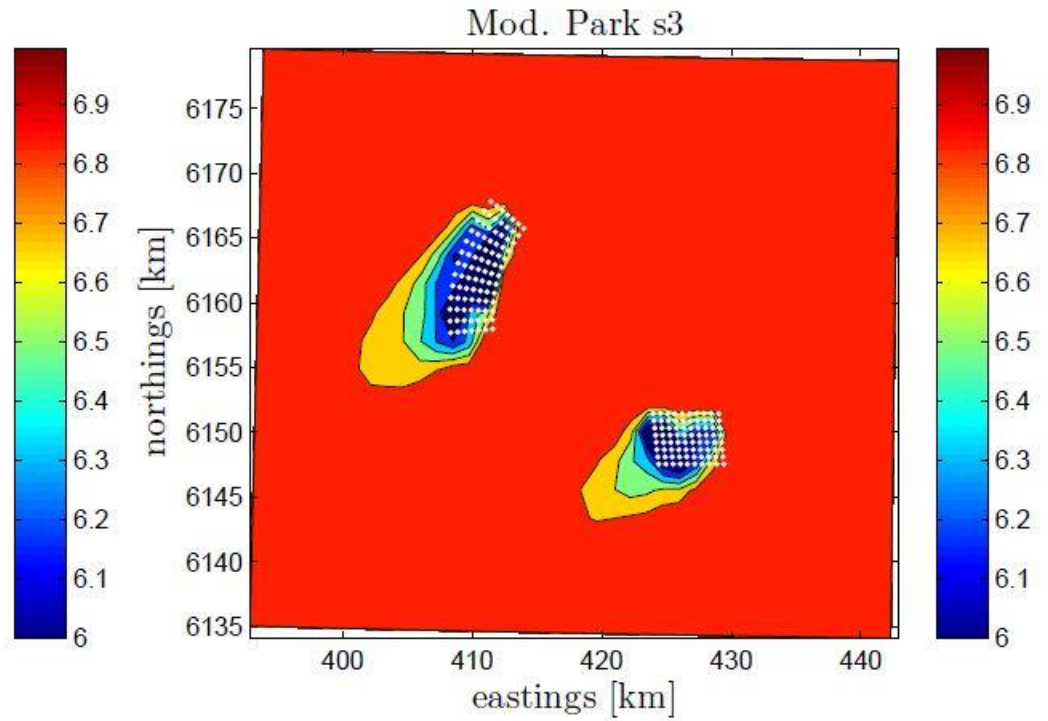
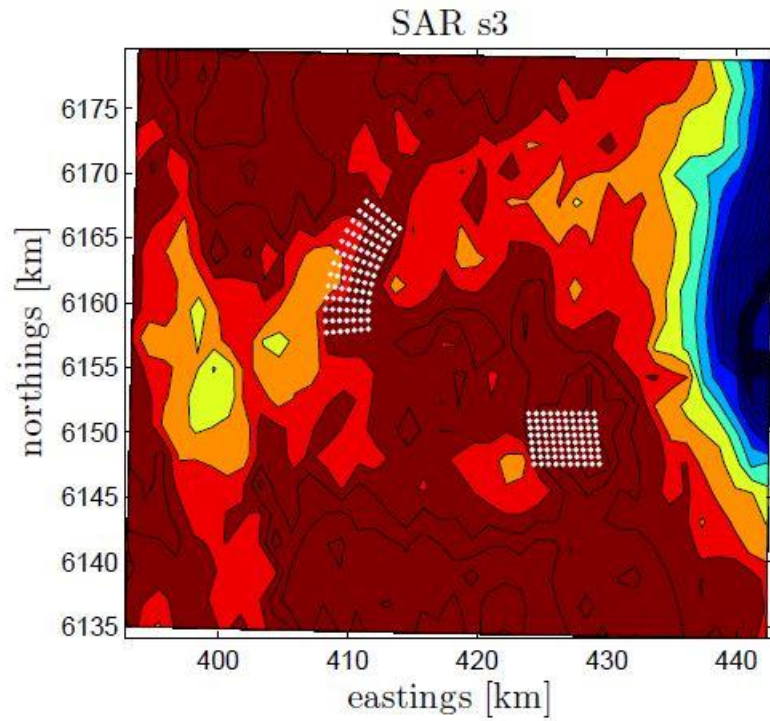
# Geo-located averaging Sector 2: SAR data and PARK model results



Average wind field  
based on 7 SAR wind maps



# Geo-located averaging Sector 3: SAR data and PARK model results



Average wind field  
based on 12 SAR wind maps

## Geo-located averaging: Interpretation of results

### SAR data

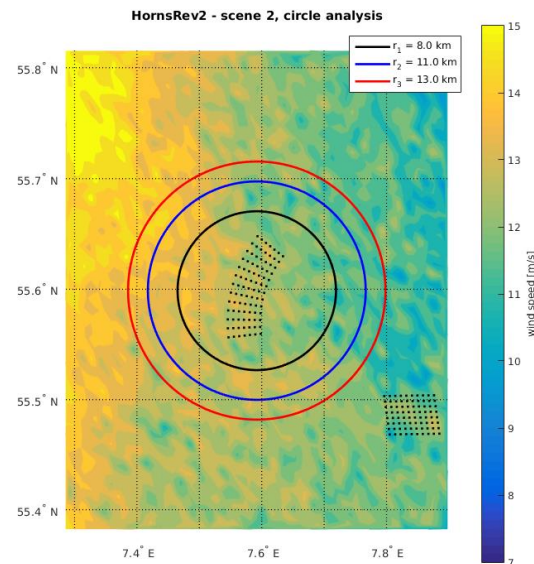
- The study reveals clear gradients in the coastal mean wind field at all sites and a wind speed deficit from the free-stream conditions.
- The number of samples is small.
- The bins represent a 30-degree range of wind directions.
- Both conditions were making it difficult to clearly identify the wind farm wake for some of the sectors.
- In addition bathymetry effects appear in the SAR wind fields.

### PARK model

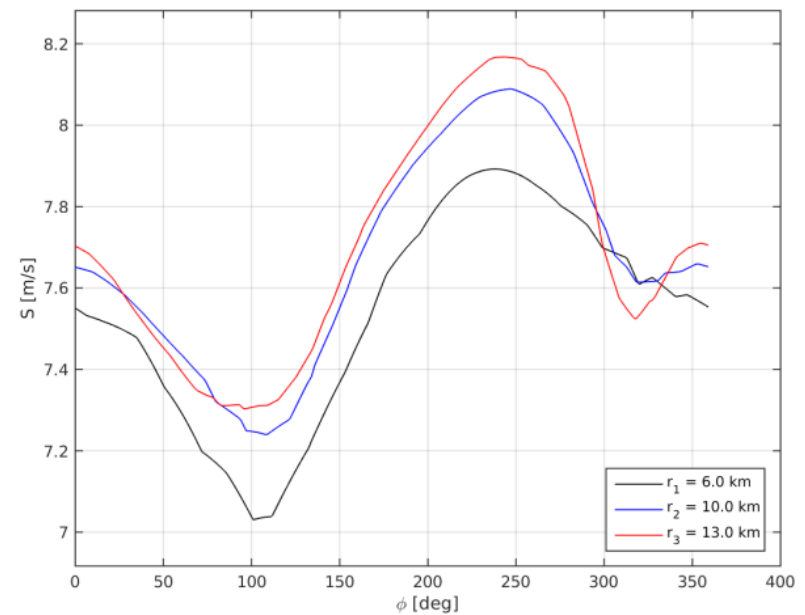
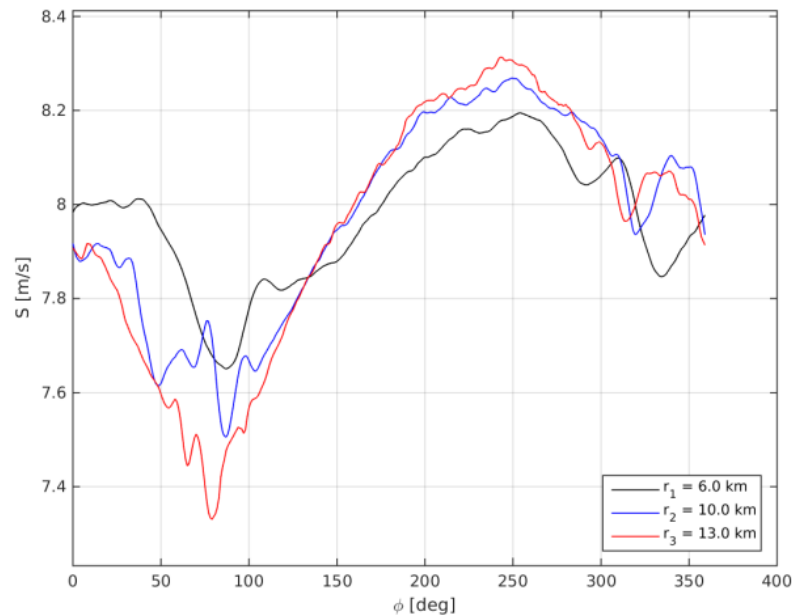
- The PARK model results compare to SAR data in regard to the direction and size of wake even though the coastal gradient is not modelled by PARK.

## Rotation of satellite data before aggregation

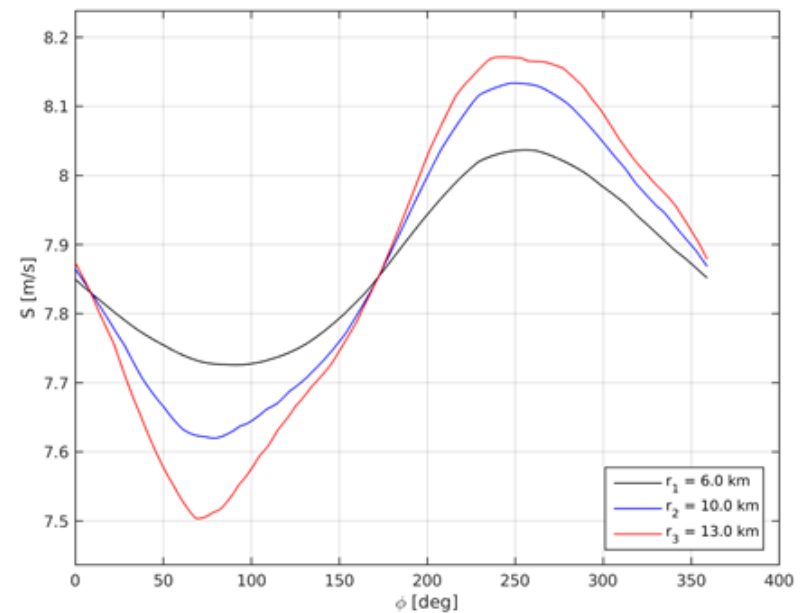
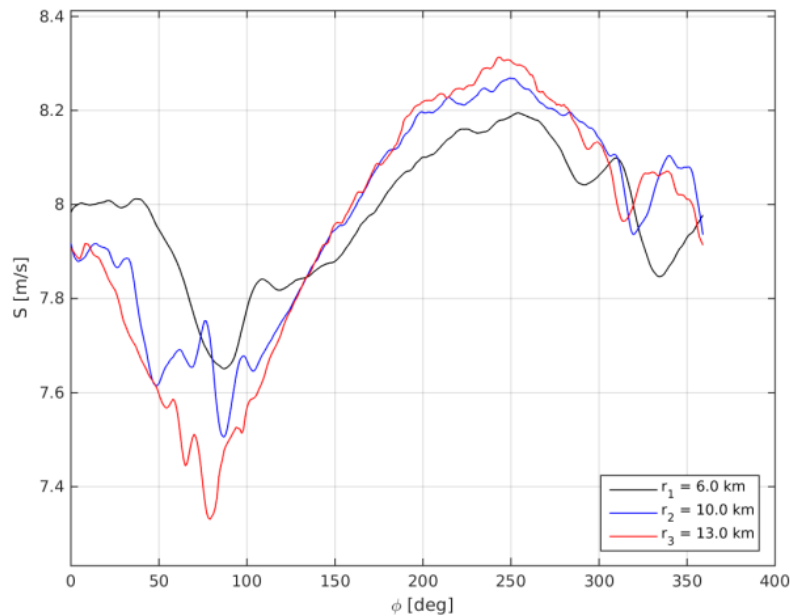
- To overcome these problems a newly developed method is applied which 'rotates' or 'aligns' as first step in one degree bins the direction of the wind farm wake. In this new reference frame, the wind farm wake regions downwind of the wind farm is thus superimposed very accurately.



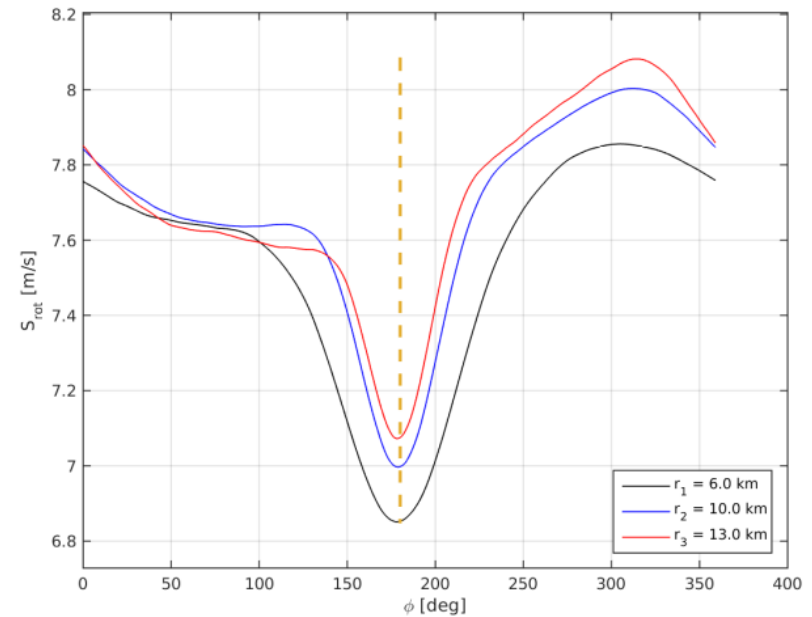
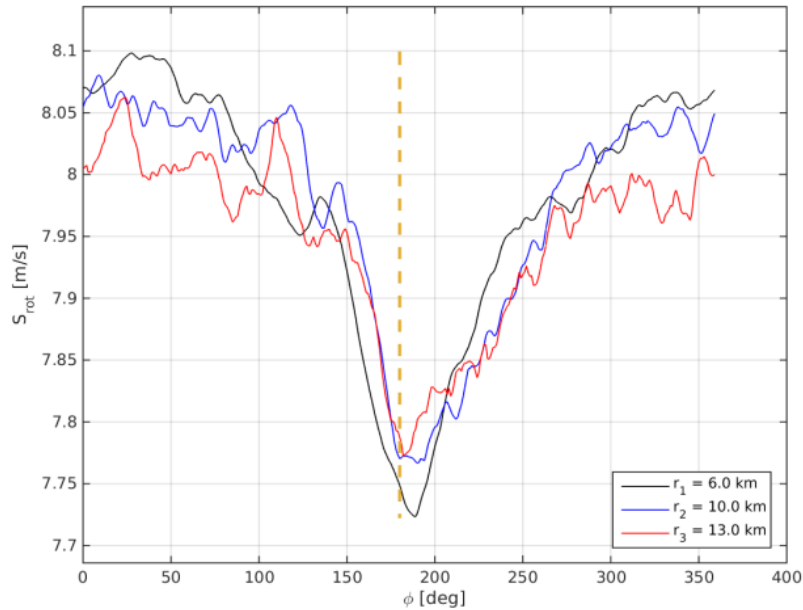
# Coastal wind speed gradient: SAR data and WRF model at Horns Rev 1 (with and without wind farm)



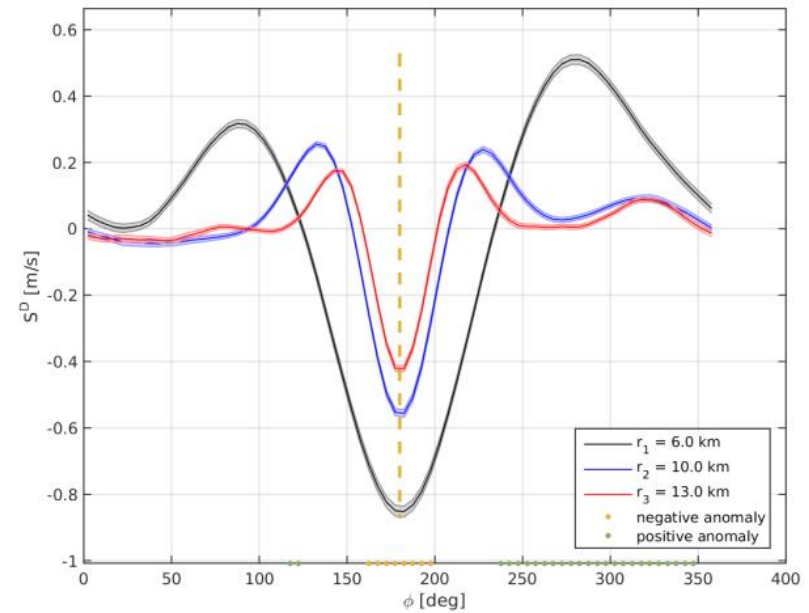
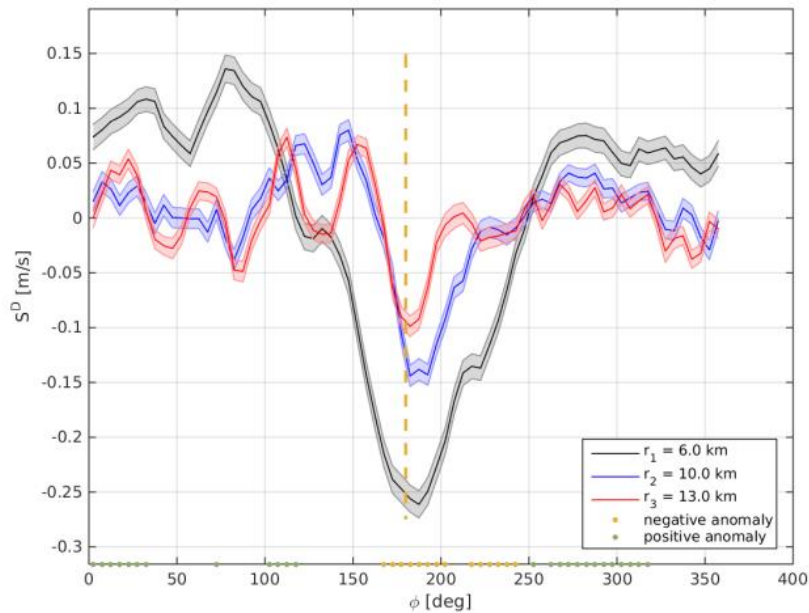
# Coastal wind speed gradient: SAR data and WRF model at Horns Rev 1 (with and without wind farm)



# Rotated: aggregated wind farm wake from SAR data and WRF model



# Rotated: aggregated wind farm wake velocity deficit normalized with side lobe winds SAR data and WRF model results



## Rotation: Interpretation of results

- By applying the new methodology using rotation of the SAR-based wind fields and WRF model results comparable aggregated wind farm wake results are obtained.
- The SAR-based findings strongly support the model results at Horns Rev 1.
- The new methodology increases the number of samples, aligns the wind direction of inflow much more accurately ( $1^\circ$  bins) and in most cases but not always overcome the coastal wind gradient.
- The most convincing results are obtained for the wind wake deficit results in which the side lobe winds are used for normalization.
- It could be possible to compare to WASP and Fuga model results to assess in particular the far-field wake effects.



## Further reading (in review):

1 *Energies* 2015, 8, 1-x [manuscripts](#); doi:10.3390/en80x000x

2

OPEN ACCESS

3

*energies*

4

ISSN 1996-1073

5

[www.mdpi.com/journal/energies](http://www.mdpi.com/journal/energies)

6

*Article*

### 7 **Using satellite SAR to characterize the wind flow around** 8 **offshore wind farms**

9 **Charlotte Bay Hasager<sup>1,\*</sup>, Pauline Vincent<sup>2,†</sup>, Jake Badger<sup>1,†</sup>, Merete Badger<sup>1,†</sup>, Alessandro Di**  
10 **Bella<sup>1,†</sup>, Alfredo Peña<sup>1,†</sup>, Romain Husson<sup>2,†</sup> and Patrick Volker<sup>1,†</sup>**

11 <sup>1</sup> DTU Wind Energy, [Frederiksborgvej 399](#), 4000 Roskilde, Denmark; E-Mails [cbha@dtu.dk](mailto:cbha@dtu.dk) (C.H.);  
12 [jaba@dtu.dk](mailto:jaba@dtu.dk) (J.B.); [mebc@dtu.dk](mailto:mebc@dtu.dk) (M.B.); [adia@dtu.dk](mailto:adia@dtu.dk) (A.D.B.); [aldi@dtu.dk](mailto:aldi@dtu.dk) (A.P.); [pvol@dtu.dk](mailto:pvol@dtu.dk)  
13 (P.V.);

14 <sup>2</sup> CLS, Avenue La Pérouse, Bâtiment le Ponant, 29280 Plouzané, France; E-Mails: [pvincent@cls.fr](mailto:pvincent@cls.fr)  
15 (P.V.); [romain.husson@cls.fr](mailto:romain.husson@cls.fr) (R.H.);

16 DTU Wind Energy, Technical University of Denmark

## Support by

---



This project has received funding from the European Union's Seventh Programme for research, technological development and demonstration under grant agreement No FP7-ENERGY-2011-1/ n° 282797

Acknowledgements: EERA DTOC funding  
Satellite data from European Space Agency  
Processing of satellite wind fields CLS