

Marquette University

e-Publications@Marquette

Biological Sciences Faculty Research and Publications

Biological Sciences, Department of

4-2020

Macroborer Presence on Corals Increases with Nutrient Input and Promotes Parrotfish Bioerosion

Mallory M. Rice

University of California - Santa Barbara

Rebecca L. Maher

Oregon State University

Adrienne M.S. Correa

Rice University

Holly V. Moeller


University of California - Santa Barbara

Nathan P. LeMoine

Marquette University, nathan.lemoine@marquette.edu

See next page for additional authors

Follow this and additional works at: https://epublications.marquette.edu/bio_fac

 Part of the [Biology Commons](#)

Recommended Citation

Rice, Mallory M.; Maher, Rebecca L.; Correa, Adrienne M.S.; Moeller, Holly V.; LeMoine, Nathan P.; Shantz, Andrew A.; Burkepile, Deron E.; and Silbiger, Nyssa J., "Macroborer Presence on Corals Increases with Nutrient Input and Promotes Parrotfish Bioerosion" (2020). *Biological Sciences Faculty Research and Publications*. 814.

https://epublications.marquette.edu/bio_fac/814

Authors

Mallory M. Rice, Rebecca L. Maher, Adrienne M.S. Correa, Holly V. Moeller, Nathan P. LeMoine, Andrew A. Shantz, Deron E. Burkepile, and Nyssa J. Silbiger

Marquette University

e-Publications@Marquette

Biological Sciences Faculty Research and Publications/College of Arts and Sciences

This paper is NOT THE PUBLISHED VERSION.

Access the published version via the link in the citation below.

Coral Reefs, Vol. 39, No. 2 (April 2020): 409-418. [DOI](#). This article is © Springer and permission has been granted for this version to appear in [e-Publications@Marquette](#). Springer does not grant permission for this article to be further copied/distributed or hosted elsewhere without express permission from Springer.

Macroborer Presence on Corals Increases with Nutrient Input and Promotes Parrotfish Bioerosion

Mallory M. Rice

Department of Ecology, Evolution, and Marine Biology, University of California, Santa Barbara, Santa Barbara, CA

Rebecca L. Maher

Department of Microbiology, Oregon State University, Corvallis, OR

Adrienne M. S. Correa

Department of BioSciences, Rice University, Houston, TX

Holly V. Moeller

Department of Ecology, Evolution, and Marine Biology, University of California, Santa Barbara, Santa Barbara, CA

Nathan P. Lemoine

Department of Biological Sciences, Marquette University, Milwaukee, WI

Andrew A. Shantz

Department of Biology, Pennsylvania State University, University Park, PA

Deron E. Burkepile

Department of Ecology, Evolution, and Marine Biology, University of California, Santa Barbara, Santa Barbara, CA

Marine Science Institute, University of California, Santa Barbara, Santa Barbara, CA

Nyssa J. Silbiger

Department of Biology, California State University, Northridge, CA

Abstract

Bioerosion by reef-dwelling organisms influences net carbonate budgets on reefs worldwide. External bioeroders, such as parrotfish and sea urchins, and internal bioeroders, including sponges and lithophagid bivalves, are major contributors to bioerosion on reefs. Despite their importance, few studies have examined how environmental (e.g., nutrients) or biological drivers (e.g., the actions of other bioeroders) may influence bioeroder dynamics on reefs. For example, internal bioeroders could promote external bioerosion by weakening the coral skeletal matrix. Our study investigated: (1) whether nutrient supply influences the dynamics between internal and external bioeroders and (2) how the presence of a boring bivalve, *Lithophaga* spp., influences parrotfish bioerosion on massive *Porites* corals. We hypothesized that nutrient supply would be positively correlated with *Lithophaga* densities on massive *Porites* colonies, and that as bivalve density increased, the frequency and intensity of parrotfish bioerosion would increase. To test these hypotheses, we analyzed six time points over a 10-yr period from a time series of benthic images and nitrogen content of a dominant macroalga from the fringing reefs around Moorea, French Polynesia. We found *Lithophaga* densities were positively correlated with nitrogen availability. Further, massive *Porites* that are more infested with *Lithophaga* had both a higher probability of being bitten by parrotfish and a higher density of bite scars from parrotfishes. Our findings indicate that increasing nutrient availability may strengthen the relationship between internal and external bioeroders, suggesting that colonies at more eutrophic sites may experience higher bioerosion rates.

Keywords

Bioerosion; Corallivory; Macroborer; *Lithophaga*; Eutrophication; Parrotfish

Introduction

Bioerosion, the removal of calcium carbonate structure by living organisms, is an integral process on **coral reefs** that contributes to the persistence of these biodiverse, structurally complex ecosystems (Glynn and Manzello [28]; Perry and Harborne [42]). Bioeroding organisms are represented in four of the six kingdoms (Hutchings [33]; Glynn and Manzello [28]; Perry and Harborne [42]). Bioerosive action is generally considered in terms of external and internal bioeroders. External bioeroders, such as parrotfishes, pufferfishes, and sea urchins, remove external reef structure mechanically. Internal bioerosion occurs when carbonate structure is removed from the inside of coral skeletons mechanically and/or chemically by worms, bivalves, sponges, and other microborers (Hutchings [33], [32]; Tribollet and Golubic [61]; Weinstein et al. [65]). The abundance of these internal bioeroding taxa, and thus, bioerosion rates, vary considerably over space and time (e.g., Tribollet and Golubic [60];

Tribollet et al. [63]; Silbiger et al. [58], [55]). Given that bioerosion influences the net growth and overall carbonate budget of **coral reefs** (Perry et al. [43]; Glynn and Manzello [28]), there is a critical need to better understand the environmental and biological drivers that shape bioerosion patterns.

The impacts of bioeroders on reef framework can be magnified by environmental conditions that hinder reef accretion, increase bioeroder populations, or favor bioerosive processes (Glynn [27]; Glynn and Manzello [28]; Perry and Harborne [42]; Silbiger et al. [55]). For example, increased nutrient supply rates often increase internal bioeroder densities (Rose and Risk [47]; Edinger et al. [23]; Holmes et al. [31]; Le Grand and Fabricius [34]), thereby stimulating bioerosion (DeCarlo et al. [21]; Prouty et al. [44]; Lubarsky et al. [37]). These relationships likely occur because eutrophication increases coral skeleton porosity (Dunn et al. [22]) and bolsters populations of filter-feeding (Le Grand and Fabricius [34]) and photosynthesizing internal bioeroders (Carreiro-Silva et al. [16]). Increased coral skeletal porosity weakens the skeletal matrix, making corals more susceptible to mechanical damage by external bioeroders (Caroselli et al. [14]; Dunn et al. [22]; Mwachireya et al. [41]). For example, Littler et al. ([36]) observed that parrotfishes selectively bioerode *Porites* corals with weaker skeletons. Filter-feeding bioeroders, such as macroborers, become more abundant on eutrophic reefs because food resources (i.e., plankton) are available in greater quantities due to nutrient rich conditions (Scott and Cope [53]; Perry and Harborne [42]). In fact, inshore reefs, which tend to be more eutrophic due to land-based fertilizer and runoff (Fabricius [26]), often harbor higher macroborer densities than offshore reefs (Sammarco and Risk [50]; Scott and Cope [53]; Le Grand and Fabricius [34]). Yet inshore reefs tend to have lower external bioerosion rates by parrotfishes relative to offshore reefs (Hoey and Bellwood [30]; Bonaldo and Bellwood [6]). Thus, the influence of nutrient loading on bioerosion may differ for internal and external bioeroders.

Bioeroders can also be influenced by biotic interactions. The weakening of coral framework or exposure of new calcium carbonate surfaces in a colony due to the actions of one bioeroder may facilitate the action of another bioeroding group (Glynn [27]). For example, higher densities of macroborers were found in eroded versus intact portions of individual *Porites astreoides* colonies, suggesting that Caribbean parrotfishes target coral colony surfaces that contain macroborers (Rotjan and Lewis [48]). Thus, coral colonies with internal bioeroders, such as sponges, barnacles, polychaetes, and bivalves, might influence feeding preferences (e.g., colony targeted, or area on a given colony targeted) of external bioeroders (Rotjan and Lewis [48]). Bivalves, such as *Lithophaga* spp., are common internal borers that infest live corals and occur in high abundances on massive *Porites* corals (> 1800 ind. m⁻² live tissue) on inshore, eutrophic reefs (Glynn and Manzello [28]). We predicted that high nutrient availability increases the density of internal borers in coral colonies and that their presence intensifies parrotfish bioerosion of these same colonies. Thus, we hypothesized that high nutrient availability and the bioerosive activities of internal borers facilitate external bioerosion of coral colonies by scraping and excavating parrotfishes.

Here, we tested whether internal borers, specifically lithophagid bivalves, were correlated with external bioerosion by parrotfishes (Labridae: Scarini) across a range of nitrogen availability. Specifically, we aimed to: (1) correlate the availability of nitrogen with internal bioeroders and (2) investigate the relationship between *Lithophaga* boreholes and parrotfish bite scars. We hypothesized that nitrogen availability would be positively correlated with the abundance of *Lithophaga* bivalves and

that a higher density of these boring bivalves would increase the frequency and intensity of parrotfish bioerosion.

Materials and methods

Study site

This study was conducted in Moorea, French Polynesia in conjunction with the Moorea Coral Reef Long Term Ecological Research project (MCR LTER). Since 2005, the MCR LTER has taken annual photoquadrats in the fringing reefs across six LTER sites ranging in depth between 4 and 6 m (Edmunds [24]). There is a 40-m transect at each site partitioned into five permanent sections. Each section has uniquely marked stainless steel posts placed at the beginning and end, and every 1-m mark there is a permanent 50 × 50 cm plot ($n = 40$ plots per site). The photoquadrats (50 × 50 cm) are positioned along the permanent transect at approximately the same position at the 1-m mark and photographed with a high-resolution SLR digital camera annually.

Data collection

We used image analysis to determine spatiotemporal changes in the density of parrotfish bite scars and *Lithophaga* boreholes on the dominant reef-building coral, massive *Porites*, across the fringing reefs from a 10-yr dataset of benthic photographs. We examined a total of 715 photographs taken in 2006, 2008, 2010, 2011, 2013, and 2016 at three LTER sites characteristically dominated by massive *Porites* (Fig. 1a; Edmunds [24]). Distinct parrotfish bite scars and *Lithophaga* bores are visible on massive *Porites* in the photographs (Fig. 1b). In 350 photographs, massive *Porites* colonies were present; these photographs were analyzed to investigate hypothesized spatiotemporal patterns in the dynamics between internal and external bioeroders in relation to nutrient supply (Fig. 1c). All images were processed using standardized techniques adapted from Maher et al. ([38]) using ImageJ (Schindelin et al. [51]). A ruler was used to set the scale in ImageJ to 1 cm, and every massive *Porites* colony was outlined to estimate its 2D live surface area within the photoquadrat. The number of distinct parrotfish bite scars and *Lithophaga* bores was recorded for each live massive *Porites* coral using the Cell Counter plugin for ImageJ and normalized to live colony surface area for analyses. The percent cover of massive *Porites* was determined using all MCR LTER photographs during this time period ($n = 715$ photographs total) using CoralNet software with a stratified random point distribution with 100 points and a confidence threshold of 95% for computer automation (Beijbom et al. [5]).

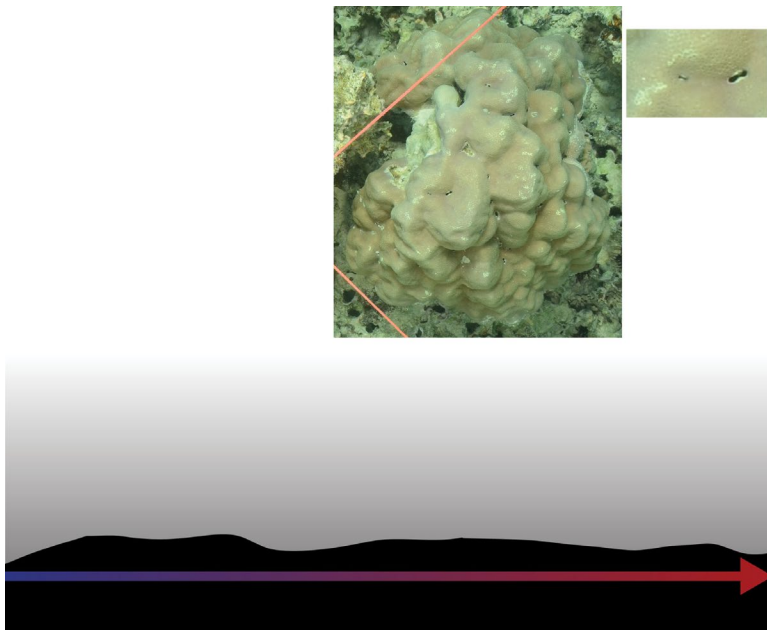


Fig. 1 Site map of Moorea, French Polynesia, example time series photograph, and conceptual diagram depicting the hypothesized relationship between nitrogen supply, *Lithophaga* colonization, and parrotfish bioerosion. a Map of Moorea, French Polynesia depicting the three LTER sites used in this study. b Photograph of massive *Porites* containing parrotfish bite scars and *Lithophaga* bores (photograph credit: Peter Edmunds). c As reefs shift from oligotrophic to eutrophic conditions, massive *Porites* colonies may become colonized with more *Lithophaga* borers, which may increase both the likelihood and intensity of bioerosion by parrotfish resulting in an increase in macro- and external bioerosion on eutrophic reefs

We used the MCR LTER time series of percent tissue nitrogen (% N) in the brown macroalga *Turbinaria ornata* at each site to examine the relationship between macroborer densities and nitrogen (N) availability (Carpenter [15]). The nutrient content of macroalgae is often used as a proxy for ambient nutrient conditions as these macroalgae integrate nutrients over a relatively long time frame (i.e., weeks to months) (Atkinson and Smith [2]). Both field surveys and experiments show that algae in consistently enriched environments typically have higher tissue nutrients (e.g., Burkepile and Hay [13]; Vega Thurber et al. [64]). The MCR LTER collects the brown macroalga *T. ornata* annually at LTER fringing reef sites (Carpenter [15]). *T. ornata* integrates N into its tissues for ~ 3 months, providing more information about nutrient conditions at sites than water samples, which are ephemeral (Lin and Fong [35]). Briefly, in this study, *T. ornata* were brought back to laboratory where the epiphytes were brushed off and fronds were removed 5 cm below the apex of the thallus ($n = 10$ fronds per site). The algae were dried at 60 °C for ~ 48 h or until constant weight and processed for CHN at University of California Santa Barbara's analytical laboratory (for detailed methods see Carpenter [15]). Tissue CHN data were not available in 2006, so these data were not included in the analysis.

Data on fish abundance from the MCR LTER time series were used to evaluate how parrotfish density varied across site and year. SCUBA divers estimated the abundance and length of fishes on permanent 50 × 5 m belt transects running parallel to shore ($n = 4$ per site) between 0900 and 1600 h local time at ~ 10 m depth in the fringing reef (Brooks [11]). We included *Chlorurus microrhinos*, *Chlorurus spilurus*, *Scarus frenatus*, and *Scarus ghobban* parrotfishes that were > 10 cm in total length in our

analysis because they are known corallivores and were large enough for their bites to scrape or excavate calcium carbonate (Cole et al. [19]; Rotjan and Lewis [49]).

In situ ground truthing of *Lithophaga* bores and parrotfish bite scars

Counts of *Lithophaga* bores or parrotfish bite scars from corals could differ based on whether a given colony is examined in situ on the reef by a snorkeler versus image analysis of a 2D photograph of the colony. To explore potential variation in the data generated by these two methods, we collected paired counts of *Lithophaga* bores and parrotfish bite scars from individual massive *Porites* colonies using in situ and image analysis approaches. These data were collected at two fringing reef sites in August and September of 2018 (Site 1: 17° 29' 1.31" S, 149° 49' 0.16", Site 2: 17° 29' 24.41" S, 149° 49' 33.80" W, depths 1–3 m) on the north shore of Moorea. A total of 19 colonies were examined per reef site ($n = 38$ colonies total). For in situ counts, a 50 × 50 cm quadrat was placed on a randomly selected massive *Porites* colony and *Lithophaga* bores and parrotfish bite scars were recorded over its entire surface. This same coral colony was then photographed with a 10-cm size standard using an Olympus TG-4 camera in plain view for subsequent blind image analysis. The same observer analyzed these photographs and the time series photographs.

Data analysis

General or generalized linear models were used to test for mean differences in *Lithophaga*, parrotfish, and parrotfish bite scar densities and percent cover of massive *Porites* by site and year and their interaction (i.e., two-way ANOVA). We took transect-level averages for massive *Porites* cover and summed across transects for parrotfish density. Parrotfish density was $\log(x + 1)$ transformed to meet assumptions of normality. A gamma hurdle model (i.e., two-way ANOVA based on a binomial and gamma distribution) was used for *Lithophaga* and bite scar densities because they were highly zero-inflated and non-normal. We used linear regression to test for a relationship between parrotfish density and parrotfish scar density using the site and year means.

We used a simple linear regression to test the relationship between *Lithophaga* densities and % N in tissues of *T. ornata* averaged across site by year. Tissue N data were not collected in 2006; thus, these three data points were excluded from the linear regression. To test the relationship between *Lithophaga* density and parrotfish bite scars on *Porites*, we first used a logistic regression to test whether *Lithophaga* density affected the probability of a coral being eroded by parrotfish. We then used a linear model to test the relationship between log-transformed *Lithophaga* and parrotfish bite scar densities when both were present. We also tested for a quadratic relationship between *Lithophaga* and parrotfish bite scar densities (i.e., $Lithophaga$ density + $Lithophaga$ density²), but the quadratic term was not statistically significant and, thus, was removed from the model. This two-step approach was used because both the *Lithophaga* and bite scar data were highly zero-inflated. Site and year were included as crossed random effects in the logistic and linear models to account for repeated measures. Lastly, linear regressions were used to explore correlations between log-transformed *Lithophaga* and parrotfish bite scar counts based on snorkel observations in situ and image analysis.

Normality and homoscedasticity of residuals were assessed visually for all models using quantile–quantile plots and boxplots by site and year, respectively. All analyses were conducted in the program

R (R Development Core Team [45]), and mixed effects models were analyzed using the *lme4* package (Bates et al. [4]). All code and raw data used in this analysis are available at <https://github.com/njsilbiger/MCRBioerosion> (Silbiger et al. [56]).

Results

We observed 2420 *Lithophaga* bores and 1883 parrotfish bite scars. *Lithophaga* densities and *Porites* cover were both highly variable across sites and years and had a significant interaction term (*Lithophaga* density site \times year: $\chi^2 = 8.6$, $P = 0.013$; Fig. S1a and *Porites* cover site \times year: $F_{2,84} = 21.85$, $P < 0.0001$; Fig. S1b). Massive *Porites* cover was highest at LTER 1 in 2006 ($\sim 13\%$) before it declined over time to $\sim 2\text{--}4\%$ cover by 2011, whereas at LTER 3 and 4, cover was relatively low and stable throughout the study period at $\sim 2\text{--}4\%$. *Lithophaga* densities were consistently the highest at LTER 3, with an average of 0.09 ± 0.01 SE cm^{-2} on live massive *Porites* across all years: 4 times higher than LTER 4 and an order of magnitude higher than LTER 1. Parrotfish bite scar density on *Porites* varied by site (scars: $\chi^2 = 7.03$, $P = 0.03$; Fig. S1c) and year (scars: $\chi^2 = 6.74$, $P = 0.01$ Fig. S1c). Parrotfish density also varied by site ($F_{2,50} = 8.19$, $P < 0.001$; Fig. S1d) and year ($F_{5,50} = 5.94$, $P < 0.001$), but we did not observe a significant interaction term ($F_{10,50} = 0.39$, $P = 0.9$). We also did not observe a relationship between parrotfish density and parrotfish scar density ($F_{1,16} = 0.25$, $P = 0.6$, $R^2 = 0.15$). Parrotfish scar densities were the highest at LTER 3, with an average of 0.08 ± 0.009 SE cm^{-2} of live coral across all years.

The high spatiotemporal variability in *Lithophaga* densities may be influenced in part by nitrogen (N) inputs, as evident by the significant positive relationship between % N in algal tissue and mean *Lithophaga* densities ($F_{1,13} = 6.92$, $P = 0.02$, $R^2 = 0.3$; Fig. 2). Notably, LTER 3 consistently had the highest *Lithophaga* densities through time and also had the highest algal tissue % N content across all years and (LTER 3: $0.85 \pm 0.03\%$; LTER 1: $0.77 \pm 0.02\%$; LTER 4: $0.77 \pm 0.02\%$; mean \pm SE). The elevated *Lithophaga* densities at sites with higher N input were correlated with an increased likelihood of parrotfish bite scars. Specifically, higher *Lithophaga* densities significantly increased the probability of a coral having a parrotfish bite scar ($\chi^2 = 5.73$, $P = 0.017$; Fig. 3a), where the odds of a parrotfish bite scar increased by 2.19 with every increase of 0.5 *Lithophaga* cm^{-2} on live massive *Porites* (Fig. 3a). When only considering colonies with *Lithophaga* borers, there was also a significant positive relationship between *Lithophaga* density and the density of parrotfish bite scars, where parrotfish bite scars increased by 1.5 for every increase in *Lithophaga* cm^{-2} on live massive *Porites* ($F_{1,33} = 45.2$, $P < 0.0001$, marginal $R^2 = 0.23$, conditional $R^2 = 0.25$; Fig. 3b).

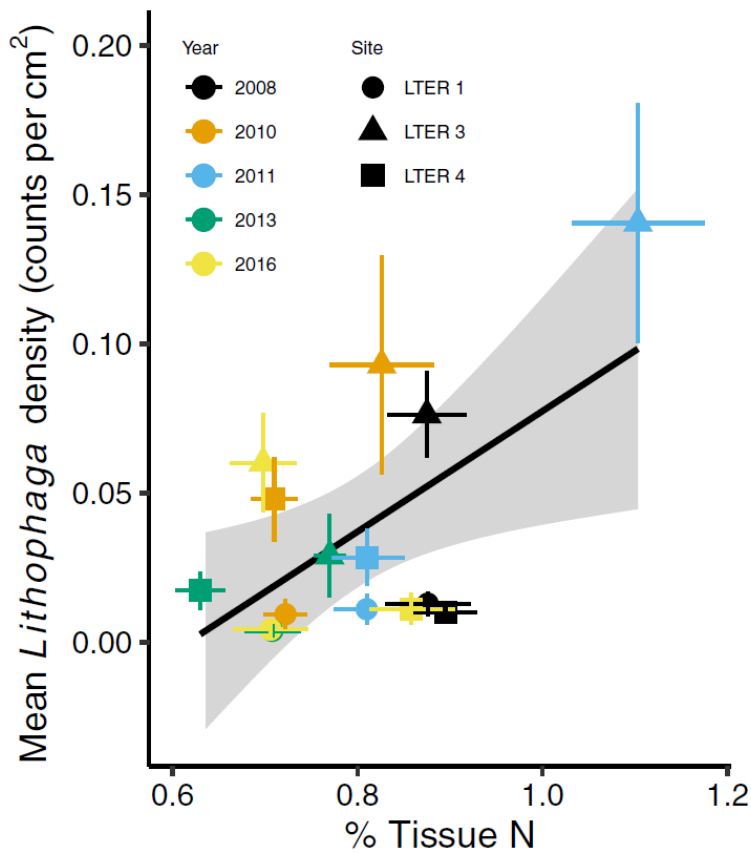


Fig. 2 Relationship between nitrogen availability and *Lithophaga* spp. densities. Dots and whiskers are % tissue N \pm SE (x) and mean borers $\text{cm}^{-2} \pm$ SE (y) for each site (LTER 1, 3, 4) \times year (2008, 2010, 2011, 2013, 2016; $n = 15$ total). Data for algal tissue % N were not available in 2006 from the MCR LTER; thus, three data points were excluded from the analysis. Predictions are best fit line \pm 95% confidence intervals from a simple linear regression. Percent N of *Turbinaria ornata* were used as a proxy for nitrogen availability at each site

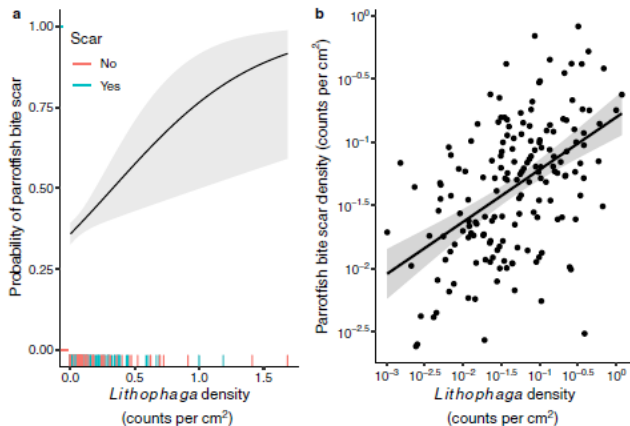


Fig. 3 Models testing probability and densities of parrotfish bite scars as a function of *Lithophaga* spp. density. a The density of *Lithophaga* spp. significantly increased the probability of a coral having a parrotfish bite scar. Blue and red hash marks in the rug are the raw data ($n = 939$) and prediction lines are model fit \pm 95% confidence intervals. Year and site were included in the logistic model as crossed random effects. Data were scaled for the analysis and back transformed for this figure. b When bite scars were present, parrotfish bite scar density significantly increased with the density of *Lithophaga* spp. Both *Lithophaga* spp. and parrotfish bite scar densities were log-transformed for the analysis. Black dots are the raw data ($n = 170$) and prediction lines are model fit \pm 95% confidence intervals. Year and site were included in the both models as crossed random effects

Lastly, we tested the efficacy of our image analysis by comparing *Lithophaga* and parrotfish bite scar densities counted using image analysis to data collected in situ. For parrotfish bites, there was a significantly positive relationship between parrotfish bite scars from image analysis and parrotfish bite scars counted in situ ($F_{1,36} = 50.64$, $P < 0.001$, $R^2 = 0.58$, $y = 0.59x + 1.7$; Fig. S2a). Similarly, for *Lithophaga* bore holes, there was a positive relationship between bore holes counted from images and those counted in situ ($F_{1,36} = 48.8$, $P < 0.001$, $R^2 = 0.58$, $y = 1.2x - 0.20$; Fig. S2b), although the image analysis slightly underestimated parrotfish bite scars at low densities.

Discussion

Our study demonstrates positive relationships among nitrogen enrichment, infestation with macroborers, and external bioerosion experienced by corals. Our results indicate that massive *Porites* colonies on more eutrophic reefs are likely to have higher densities of *Lithophaga* bivalves (Fig. 2), which increases both the probability of these colonies being bitten by parrotfishes (Fig. 3a) and the density of parrotfish bite scars (Fig. 3b). In fact, an increase of 0.5 lithophagid bivalves cm^{-2} on a massive *Porites* colony more than doubled the odds of being bitten (Fig. 3a). Thus, increases in nitrogen supply may strengthen the dynamics between external bioeroders and macroborers, likely resulting in elevated bioerosion on eutrophic reefs.

Our results demonstrate that massive *Porites* infestation by *Lithophaga* is correlated with increased external bioerosion by parrotfishes in Moorea. Similarly, parrotfishes in the Caribbean also appear to target corals with increased macroborer densities (Rotjan and Lewis [48]), suggesting that this relationship between external bioeroders and macroborers may be widespread (e.g., generalized across ocean basins). However, more research testing these relationships is needed to determine how common this relationship is on reefs. Additionally, these ecological processes likely occur at different time scales. For example, parrotfish bite scars on *Porites* spp. heal within 2–3 months (Bak and Stewardvanes [3]; Bonaldo et al. [7]; Welsh et al. [66]), while *Lithophaga* populations likely have a lagged response to nutrient availability on the order of months to years. Despite this, several studies show strong correlations between nutrient concentrations and internal bioeroder densities (Sammarco and Risk [50]; Scott and Cope [53]; Le Grand and Fabricius [34]). Only a few studies have examined the relationship between nutrient supply and internal and external bioeroder dynamics, and these studies offer several potential mechanisms that could be driving the patterns in our study.

First, parrotfish may be directly targeting macroborers in live coral due to the high nutritional content in macroborer tissues (Rotjan and Lewis [48]), or *Lithophaga* excretion may make the surrounding coral tissue richer in nitrogen (Mokady et al. [40]), possibly increasing parrotfish bioerosion. However, empirical evidence for these hypotheses is limited. Second, lithophagid infestation weakens the skeletal matrix (Scott and Risk [52]), which could focus parrotfish bioerosion on these colonies as they select for weaker structures (Littler et al. [36]; Chazottes et al. [17]). Third, the density of *Lithophaga* bivalves may covary with some other characteristics of the coral that influence bioerosion. For instance, in the Eastern Tropical Pacific, *Porites evermanni* consistently has a higher density of lithophagid bivalves than *P. lobata*, which induces local triggerfish to prey heavily on *P. evermanni* (Boulay et al. [10]). It is challenging to identify the massive *Porites* complex to species using image analysis, and thus different cryptic species of *Porites* may be driving some of the variation in our *Lithophaga* densities in Moorea. Fourth, parrotfish may be targeting endolithic and epilithic

autotrophs (e.g., cyanobacteria). Most parrotfishes are microphages that consume microscopic benthic autotrophs as these dietary items are high in protein (Clements et al. [18]). Indeed, the abundance of microboring autotrophs, such as cyanobacteria, does increase with higher nutrient availability, resulting in higher bioerosion rates on nutrient rich reefs (Perry and Harborne [42]). *Lithophaga* excretion may facilitate these autotrophs by increasing the availability of nutrients in neighboring coral tissues. The strong correlation we observed between *Lithophaga* densities and parrotfish scars strongly suggests that parrotfish are likely targeting either *Lithophaga* or the enriched coral tissue surrounding their bore holes. Given that lithophagid bivalves contribute substantially to internal bioerosion (Glynn [27]; Glynn and Manzello [28]) and that parrotfishes are the main drivers of external bioerosion on many reefs (Perry and Harborne [42]), we recommend that future studies explicitly test the mechanisms that drive increased bioerosion on corals with high lithophagid abundances using complementary methodologies (e.g., isotopic analysis, DNA metabarcoding).

We observed fairly high external bioerosion pressure on the massive *Porites* colonies in our study. The densities of parrotfish bite scars on massive *Porites* colonies at our fringing reef sites (mean range: 0.04–0.08 scars cm⁻²) are similar to those reported on an inner shelf reef (mean range: 0.004–0.07 bite scars cm⁻²; Bonaldo et al. [8]) and mid-shelf reef (mean range: 0.006–0.1 bite scars cm⁻²; Bonaldo and Bellwood [6]) within the Great Barrier Reef. This pattern is interesting given that fish corallivory and bioerosion rates tend to be higher on offshore reefs characterized by lower nutrients than nearshore, eutrophic reefs (Bonaldo et al. [9]). Although we lack data on parrotfish bite scar densities for offshore massive *Porites* colonies, we can speculate as to why we see such high bioerosion pressure on colonies inhabiting nearshore reefs. While bioeroding parrotfish abundance did change spatially and temporally (Fig. S1d), we did not see a relationship between parrotfish abundance and parrotfish bite scar density, suggesting that the observed patterns in bite scar densities was likely not driven by parrotfish abundance. Yet, massive *Porites* has been declining in the Moorea fringing reef habitats for the past decade (Fig. S1b), which may increase bioerosion pressure on the remaining colonies. Bonaldo and Bellwood ([6]) found that as massive *Porites* cover declines, bioerosion pressure increases. Similar trends have been observed in the Caribbean when preferred coral species decline (Burkepile [12]).

We demonstrated that elevated nitrogen supply is correlated with elevated *Lithophaga* densities on massive *Porites* (Fig. 2). In Moorea, various anthropogenic sources (e.g., land-based pollution, stream inputs, and submarine groundwater discharge) deliver high concentrations of nutrients into the lagoon, resulting in a mosaic of nutrient hotspots across fringing reef habitats (Haßler et al. [29]). This elevated nutrient supply often increases primary productivity (Fabricius [26]), which supports higher densities of filter feeders, like *Lithophaga* spp. (Scott and Cope [53]). Nutrient loading also weakens coral skeletal structure (Caroselli et al. [14]; Mwachireya et al. [41]; Rice et al. [46]), which could make corals more susceptible to infestation by macroborers in eutrophic reefs. Notably, environmental parameters other than nutrients (e.g., pH, temperature, etc.) also affect patterns of bioeroder densities and bioerosion rates (e.g., Le Grand and Fabricius [34]; Davidson et al. [20]; Silbiger et al. [57]; Enochs et al. [25]; Silbiger et al. [58], [55]). These parameters may covary or interact with nutrients (Manzello et al. [39]; DeCarlo et al. [21]; Prouty et al. [44]; Silbiger et al. [59]) and could contribute to the macroborer patterns in this study. However, our results are consistent with other studies that have shown higher abundances of macroborers on more eutrophic reefs (e.g., Sammarco and Risk [50]; Le Grand and Fabricius [34]; but see Chazottes et al. [17]).

Image analysis of time series photographs can be a useful tool for quantifying macroborer abundances for mounding and encrusting coral morphologies (Maher et al. [38]). The correlation between abundances recorded in situ by snorkelers and through image analysis demonstrates that these two methods produce comparable results for both *Lithophaga* bores and parrotfish bite scars (Fig. S2). A previous study comparing in situ counts and image analysis of an internal bioeroding barnacle found that, on average, image analysis was more conservative than in situ counts (Maher et al. [38]). Similarly, in this study, for massive *Porites* colonies with higher *Lithophaga* abundances, photograph counts were more conservative than snorkeler counts (Fig. S2b). However, photograph counts overestimated the number of *Lithophaga* boreholes in about a third of all observations. These overestimations typically occurred on *Porites* colonies with lower *Lithophaga* abundances (Fig. S2b). There are two possible explanations for this pattern. First, snorkelers conducting in situ counts may have underestimated *Lithophaga* on colonies when they were rare, due to challenging field conditions and breath-holding time constraints associated with free diving. Second, other bioeroders could have been misidentified as *Lithophaga* in some photographs, artificially inflating reported *Lithophaga* densities in photograph counts. False positives for *Lithophaga* from photographs are unlikely, however, since we only observed *Lithophaga* or vermetid boreholes in the photographs, and *Lithophaga* spp. have characteristically distinct boreholes that differ from vermetid molluscs in Moorea (Fig. S3).

Although in situ counts of *Lithophaga* and parrotfish bite scars more accurately estimate densities (Fig. S2), in situ quantification is often time intensive and costly (e.g., dive time on SCUBA surveys, ability to deploy and retrieve calcium carbonate blocks or to core reef substrate). Thus, analyzing existing time series images can help evaluate how macroborer abundances change temporally and spatially in live coral. This study was limited in scope to assessing *Lithophaga* boreholes on live massive *Porites* colonies. We did not assess abundances on dead substrate; therefore, our analysis likely underestimates total *Lithophaga* densities on these reefs. In addition, we were unable to monitor individual coral colonies over time due to slight variability in photoquadrat placement from year to year. Had we been able to quantify individual colonies over time we likely would have had more power to address temporal patterns in bioeroder densities. Research moving forward should couple image analysis methods with in situ methods to quantify macroborer densities in both live and dead coral and determine how these densities may translate to bioerosion rates.

External bioerosion by herbivorous fishes is a major contributor to bioerosion on many reefs (Tribollet et al. [62]; Hoey and Bellwood [30]; Bonaldo et al. [9]). Thus, it is important to study the environmental and biological drivers that may facilitate this process. Our study found strong evidence that macroborers can increase external bioerosion on reef-building corals and that nitrogen supply positively influenced lithophagid abundances. Together, these processes likely amplify the total calcium carbonate excavated from these colonies via bioerosion. Future studies should quantify how these processes impact bioerosion rates for common reef-building corals. As internal bioerosion rates are predicted to increase under future ocean conditions (e.g., ocean acidification: Wisshak et al. [67], [68]; Andersson and Gledhill [1]; Silbiger and Donahue [54]; DeCarlo et al. [21]; nutrient enrichment: Prouty et al. [44]; Lubarsky et al. [37]), there is a critical need to better understand the relationship between internal and external bioeroders and how anthropogenic forcing may facilitate particular bioeroding taxa.

Acknowledgements

We are very grateful for the decade of work by Dr. Peter Edmunds in taking these annual benthic photoquadrats, which allowed this study to be possible. We are also grateful for the decade of CHN data and fish abundance data collected by Dr. Robert Carpenter and Dr. Andrew Brooks, respectively. We thank Daniel Baldwin for assistance with the collection of data in the field. This material is based upon work supported by the U.S. National Science Foundation under Grant (OCE#16-37396) as well as a generous gift from the Gordon and Betty Moore Foundation. Research was completed under permits issued by the French Polynesian Government (Délégation à la Recherche) and the Haut-commissariat de la République en Polynésie Française (DTRT) (Protocole d'Accueil 2005-2018). Grants from the National Science Foundation (#1635798 to AMSC, #1547952 to DEB), NSF Graduate Research Fellowship to both MMR (#1650114) and RLM (#1314109-DGE), and the Worster Award to MMR supported this work. This work represents a contribution of the Moorea Coral Reef (MCR) LTER Site and is CSUN Marine Biology contribution #289. Data and code used in this paper are available on <https://github.com/njsilbiger/MCRBioerosion>.

Compliance with ethical standards

Conflict of interest

On behalf of all authors, the corresponding author states that there is no conflict of interest.

Electronic supplementary material

Below is the link to the electronic supplementary material.

Graph: Supplementary material 1 (DOCX 682 kb)

Publisher's Note

Springer Nature remains neutral with regard to jurisdictional claims in published maps and institutional affiliations.

References

1. Andersson AJ, Gledhill DC, Carlson CA, Giovannoni SJ. Ocean acidification and coral reefs: effects on breakdown, dissolution, and net ecosystem calcification. *Annual Review of Marine Science*. 2013; Palo Alto; Annual Reviews: 321-348
2. Atkinson MJ, Smith SV. C:N: P ratios of benthic marine plants. *Limnol Oceanogr*. 1983; 28: 568-574
3. Bak RPM, Steward vanes Y. Regeneration of superficial damage in the scleractinian corals *Agaricia agaricites* F. *purpurea* and *Porites astreoides*. *Bull Mar Sci*. 1980; 30: 883-887
4. Bates D, Machler M, Bolker BM, Walker SC. Fitting linear mixed-effects models using lme4. *J Stat Softw*. 2015; 67: 1-48
5. Beijbom O, Edmunds PJ, Roelfsema C, Smith J, Kline DI, Neal BP, Dunlap MJ, Moriarty V, Fan TY, Tan CJ, Chan S, Treibitz T, Gamst A, Mitchell BG, Kriegman D. Towards Automated Annotation of Benthic Survey Images: Variability of Human Experts and Operational Modes of Automation. *Plos One*. 2015; 10: 22
6. Bonaldo RM, Bellwood DR. Parrotfish predation on massive *Porites* on the Great Barrier Reef. **Coral Reefs**. 2011; 30: 259-269

7. Bonaldo RM, Krajewski JP, Bellwood DR. Relative impact of parrotfish grazing scars on massive *Porites* corals at Lizard Island, Great Barrier Reef. *Mar Ecol-Prog Ser.* 2011; 423: 223-233
8. Bonaldo RM, Welsh JQ, Bellwood DR. Spatial and temporal variation in coral predation by parrotfishes on the GBR: evidence from an inshore reef. **Coral Reefs.** 2012; 31: 263-272
9. Bonaldo RM, Hoey AS, Bellwood DR, Hughes RN, Hughes DJ, Smith IP. The ecosystem roles of parrotfishes on tropical reefs. *Oceanography and Marine Biology: An Annual Review.* 2014: Boca Raton; Crc Press-Taylor & Francis Group: 81-132
10. Boulay JN, Hellberg ME, Cortes J, Baums IB. Unrecognized coral species diversity masks differences in functional ecology. *Proc R Soc B-Biol Sci.* 2014; 281: 7
11. Brooks AJ (2018) MCR LTER: Coral Reef: Long-term Population and Community Dynamics: Fishes, ongoing since 2005
12. Burkepille DE. Context-dependent corallivory by parrotfishes in a Caribbean reef ecosystem. **Coral Reefs.** 2012; 31: 111-120
13. Burkepille DE, Hay ME. Nutrient versus herbivore control of macroalgal community development and coral growth on a Caribbean reef. *Mar Ecol-Prog Ser.* 2009; 389: 71-84
14. Caroselli E, Prada F, Pasquini L, Nonnis Marzano F, Zaccanti F, Falini G, Levy O, Dubinsky Z, Goffredo S. Environmental implications of skeletal micro-density and porosity variation in two scleractinian corals. *Zoology.* 2011; 114: 255-264
15. Carpenter R (2018) MCR LTER: Coral Reef: Macroalgal CHN, ongoing since 2005
16. Carreiro-Silva M, McClanahan TR, Kiene WE. The role of inorganic nutrients and herbivory in controlling microbioerosion of carbonate substratum. **Coral Reefs.** 2005; 24: 214-221
17. Chazottes V, Hutchings P, Osorno A. Impact of an experimental eutrophication on the processes of bioerosion on the reef: One Tree Island, Great Barrier Reef, Australia. *Mar Pollut Bull.* 2017; 118: 125-130
18. Clements KD, German DP, Piche J, Tribollet A, Choat JH. Integrating ecological roles and trophic diversification on **coral reefs**: multiple lines of evidence identify parrotfishes as microphages. *Biol J Linnean Soc.* 2017; 120: 729-751
19. Cole AJ, Pratchett MS, Jones GP. Diversity and functional importance of coral-feeding fishes on tropical **coral reefs**. *Fish Fish.* 2008; 9: 286-307
20. Davidson TM, de Rivera CE, Canton JT. Small increases in temperature exacerbate the erosive effects of a non-native burrowing crustacean. *Journal of Experimental Marine Biology and Ecology.* 2013; 446: 115-121
21. DeCarlo TM, Cohen AL, Barkley HC, Cobban Q, Young C, Shamberger KE, Brainard RE, Golbuu Y. Coral macrobioerosion is accelerated by ocean acidification and nutrients. *Geology.* 2015; 43: 7-10
22. Dunn JG, Sammarco PW, LaFleur G. Effects of phosphate on growth and skeletal density in the scleractinian coral *Acropora muricata*: A controlled experimental approach. *Journal of Experimental Marine Biology and Ecology.* 2012; 411: 34-44
23. Edinger EN, Limmon GV, Jompa J, Widjatmoko W, Heikoop JM, Risk MJ. Normal coral growth rates on dying reefs: are coral growth rates good indicators of reef health?. *Mar Pollut Bull.* 2000; 40: 404-425
24. Edmunds PJ (2018) MCR LTER: Coral Reef: Long-term Population and Community Dynamics: Corals, ongoing since 2005. In: LTER MCR (ed)
25. Enochs IC, Manzello DP, Kolodziej G, Noonan SHC, Valentino L, Fabricius KE. Enhanced macroboring and depressed calcification drive net dissolution at high-CO₂ **coral reefs**. *Proc R Soc B-Biol Sci.* 2016; 283: 8

26. Fabricius KE. Effects of terrestrial runoff on the ecology of corals and **coral reefs**: review and synthesis. *Mar Pollut Bull.* 2005; 50: 125-146
27. Glynn PW (1997) Bioerosion and coral-reef growth: a dynamic balance. In: Birkeland C (ed) *Life and death of coral reefs*. Chapman & Hall
28. Glynn PW, Manzello DP (2015) Bioerosion and coral reef growth: a dynamic balance **Coral reefs** in the Anthropocene. Springer, pp 67-97
29. Haßler K, Dähnke K, Kölling M, Sichoix L, Nickl A-L, Moosdorf N. Provenance of nutrients in submarine fresh groundwater discharge on Tahiti and Moorea, French Polynesia. *Applied Geochemistry.* 2019; 100: 181-189
30. Hoey AS, Bellwood DR. Cross-shelf variation in the role of parrotfishes on the Great Barrier Reef. **Coral Reefs.** 2008; 27; 1: 37-47
31. Holmes KE, Edinger EN, Hariyadi LG, Risk MJ. Bioerosion of live massive corals and branching coral rubble on Indonesian **coral reefs**. *Mar Pollut Bull.* 2000; 40: 606-617
32. Hutchings P. Role of polychaetes in bioerosion of coral substrates. 2008: Berlin; Springer-Verlag
33. Hutchings PA. Biological destruction of **coral reefs**: a review. **Coral Reefs.** 1986; 4: 239-252
34. Le Grand HM, Fabricius KE. Relationship of internal macrobioeroder densities in living massive Porites to turbidity and chlorophyll on the Australian Great Barrier Reef. **Coral Reefs.** 2011; 30: 97-107
35. Lin DT, Fong P. Macroalgal bioindicators (growth, tissue N, $\delta^{15}N$) detect nutrient enrichment from shrimp farm effluent entering Opunohu Bay, Moorea, French Polynesia. *Mar Pollut Bull.* 2008; 56: 245-249
36. Littler MM, Taylor PR, Littler DS. Complex interactions in the control of coral zonation on a Caribbean reef flat. *Oecologia.* 1989; 80: 331-340
37. Lubarsky KA, Silbiger NJ, Donahue MJ. Effects of submarine groundwater discharge on coral accretion and bioerosion on two shallow reef flats. *Limnol Oceanogr.* 2018; 63: 1660-1676
38. Maher RL, Johnston MA, Brandt ME, Smith TB, Correa AMS. Depth and coral cover drive the distribution of a coral macroborer across two reef systems. *Plos One.* 2018; 13: 17
39. Manzello DP, Kleypas JA, Budd DA, Eakin CM, Glynn PW, Langdon C. Poorly cemented **coral reefs** of the eastern tropical Pacific: Possible insights into reef development in a high-CO₂ world. *Proc Natl Acad Sci U S A.* 2008; 105: 10450-10452492517
40. Mokady O, Bonar DB, Arazi G, Loya Y. Spawning and development of three coral-associated Lithophaga species in the Red Sea. *Mar Biol.* 1993; 115: 245-252
41. Mwachireya SA, McClanahan TR, Cote IM, Hartwick BE. Increased terrestrial perturbations modify skeletal properties and mechanical strength of hard corals. *Environment and Natural Resources Research.* 2016; 6: 153
42. Perry CT, Harborne AR. Bioerosion on modern reefs: Impacts and responses under changing ecological and environmental conditions. 2016: Dordrecht; Springer
43. Perry CT, Murphy GN, Kench PS, Smithers SG, Edinger EN, Steneck RS, Mumby PJ. Caribbean-wide decline in carbonate production threatens coral reef growth. *Nature Communications.* 2013; 4: 7
44. Prouty NG, Cohen A, Yates KK, Storlazzi CD, Swarzenski PW, White D. Vulnerability of **coral reefs** to bioerosion from land-based sources of pollution. *J Geophys Res-Oceans.* 2017; 122: 9319-9331
45. R: A language and environment for statistical computing. 2017: Vienna, Austria; R Foundation for Statistical Computing

46. Rice MM, Ezzat L, Burkepile DE. Corallivory in the Anthropocene: Interactive effects of anthropogenic stressors and corallivory on **coral reefs**. *Frontiers in Marine Science*. 2019; 5: 525
47. Rose CS, Risk MJ. Increase in *Cliona delitrix* infestation of *Montastrea cavernosa* heads on an organically polluted portion of the Grand Cayman fringing reef. *Mar Ecol-Pubbl Stn Zool Napoli*. 1985; 6: 345-363
48. Rotjan RD, Lewis SM. Selective predation by parrotfishes on the reef coral *Porites astreoides*. *Mar Ecol-Prog Ser*. 2005; 305: 193-201
49. Rotjan RD, Lewis SM. Impact of coral predators on tropical reefs. *Mar Ecol-Prog Ser*. 2008; 367: 73-91
50. Sammarco PW, Risk MJ. Large-scale patterns in internal bioerosion of *Porites*: cross continental shelf trends on the Great Barrier Reef *Mar Ecol-Prog Ser*. 1990; 59: 145-156
51. Schindelin J, Arganda-Carreras I, Frise E, Kaynig V, Longair M, Pietzsch T, Preibisch S, Rueden C, Saalfeld S, Schmid B, Tinevez JY, White DJ, Hartenstein V, Eliceiri K, Tomancak P, Cardona A. Fiji: an open-source platform for biological-image analysis. *Nat Methods*. 2012; 9: 676-682
52. Scott PJB, Risk MJ. The effect of *Lithophaga* (*Bivalvia*, *Mytilidae*) boreholes on the strength of the coral *Porites lobata*. **Coral Reefs**. 1988; 7: 145-151
53. Scott PJB, Cope M (1990) Tolo revisited: a resurvey of the corals in Tolo Harbor and Channel Hong Kong six years and half a million people later
54. Silbiger NJ, Donahue MJ. Secondary calcification and dissolution respond differently to future ocean conditions. *Biogeosciences*. 2015; 12: 567-578
55. Silbiger NJ, Donahue MJ, Brainard RE. Environmental drivers of coral reef carbonate production and bioerosion: a multi-scale analysis. *Ecology*. 2017; 98: 2547-2560
56. Silbiger NJ, Moeller HV, Rice MM (2019) njsilbiger/MCRBioerosion: Macroborer presence on corals increases with nutrient input and promotes parrotfish corallivory, Zenodo
57. Silbiger NJ, Guadayol O, Thomas FIM, Donahue MJ. Reefs shift from net accretion to net erosion along a natural environmental gradient. *Mar Ecol-Prog Ser*. 2014; 515: 33-44
58. Silbiger NJ, Guadayol O, Thomas FIM, Donahue MJ. A novel μ CT analysis reveals different responses of bioerosion and secondary accretion to environmental variability. *Plos One*. 2016; 11: 20
59. Silbiger NJ, Nelson CE, Remple K, Sevilla JK, Quinlan ZA, Putnam HM, Fox MD, Donahue MJ. Nutrient pollution disrupts key ecosystem functions on **coral reefs**. *Proc R Soc B-Biol Sci*. 2018; 285: 9
60. Tribollet A, Golubic S. Cross-shelf differences in the pattern and pace of bioerosion of experimental carbonate substrates exposed for 3 years on the northern Great Barrier Reef, Australia. **Coral Reefs**. 2005; 24: 422-434
61. Tribollet A, Golubic S. Reef bioerosion: agents and processes. 2011: Dordrecht; Springer
62. Tribollet A, Decherf G, Hutchings PA, Peyrot-Clausade M. Large-scale spatial variability in bioerosion of experimental coral substrates on the Great Barrier Reef (Australia): importance of microborers. **Coral Reefs**. 2002; 21: 424-432
63. Tribollet A, Langdon C, Golubic S, Atkinson M. Endolithic microflora are major primary producers in dead carbonate substrates of Hawaiian **coral reefs**. *J Phycol*. 2006; 42: 292-303
64. Vega Thurber RL, Burkepile DE, Fuchs C, Shantz AA, McMinds R, Zaneveld JR. Chronic nutrient enrichment increases prevalence and severity of coral disease and bleaching. *Global Change Biology*. 2014; 20: 544-554
65. Weinstein DK, Maher R, Correa AMS (2019) Bioerosion. In: Loya Y, Puglise, K.A, Bridge, T. (ed) Mesophotic coral ecosystems. Springer International Publishing

66. Welsh JQ, Bonaldo RM, Bellwood DR. Clustered parrotfish feeding scars trigger partial coral mortality of massive Porites colonies on the inshore Great Barrier Reef. **Coral Reefs**. 2015; 34: 81-86
67. Wisshak M, Schonberg CHL, Form A, Freiwald A. Ocean acidification accelerates reef bioerosion. *Plos One*. 2012; 7: 8
68. Wisshak M, Schonberg CHL, Form A, Freiwald A. Effects of ocean acidification and global warming on reef bioerosion-lessons from a clionaid sponge. *Aquatic Biology*. 2013; 19: 111-127