



Corrigendum: Cinical, Metabolic, and Genetic Analysis and Follow-Up of Eight Patients With *HIBCH* Mutations Presenting With Leigh/Leigh-Like Syndrome

Junling Wang¹, Zhimei Liu¹, Manting Xu¹, Xiaodi Han¹, Changhong Ren¹, Xinying Yang¹, Chunhua Zhang² and Fang Fang^{1*}

¹Department of Neurology, Beijing Children's Hospital, Capital Medical University, National Center for Children's Health, Beijing, China, ²Department of Research, Development of MILS International, Ishikawa, Japan

Keywords: HIBCH gene, Leigh/Leigh-like syndrome, C4-OH, 2,3-dihydroxy-2-methylbutyrate, mitochondrial disorders, children

A Corrigendum on:

OPEN ACCESS

Edited and reviewed by:

Ruth Roberts,
Apconix, United Kingdom

*Correspondence:

Fang Fang
fangfang@bch.com.cn

Specialty section:

This article was submitted to
Pharmacogenetics and
Pharmacogenomics,
a section of the journal
Frontiers in Pharmacology

Received: 28 March 2021

Accepted: 27 May 2021

Published: 10 June 2021

Citation:

Wang J, Liu Z, Xu M, Han X, Ren C,
Yang X, Zhang C and Fang F (2021)
Corrigendum: Cinical, Metabolic, and
Genetic Analysis and Follow-Up of
Eight Patients With HIBCH Mutations
Presenting With Leigh/Leigh-
Like Syndrome.
Front. Pharmacol. 12:686933.
doi: 10.3389/fphar.2021.686933

Cinical, Metabolic, and Genetic Analysis and Follow-Up of Eight Patients With HIBCH Mutations Presenting With Leigh/Leigh-Like Syndrome

by Wang J, Liu Z, Xu M, Han X, Ren C, Yang X, Zhang C, Fang F. (2021). *Front. Pharmacol.* 12: 605803. doi: 10.3389/fphar.2021.605803

In the original article, there was a mistake in the legend for **Figure 3** as published. The word “23HD2MB” in the last sentence of the legend was misspelled, and it should be “23DH2MB.”

Furthermore, there was a mistake in the positions of **Figures 5, 6** as published. The positions of **Figures 5, 6** are misplaced, and they should be interchanged. The corrected **Figures 5, 6** appear below.

The reference for “Charng et al., 2016” was incorrectly written as “Charng, W., Karaca, E., Akdemir, Z. C., Gambin, T., Atik, M. M., Gu, S., et al. (2016). A phenotypically severe, biochemically “silent” case of HIBCH deficiency in a newborn diagnosed by rapid whole exome sequencing and enzymatic testing. *Am. J. Med. Genet.* 182 (4), 780–784. 10.1002/ajmg.a.61498.” It should be “Charng, W., Karaca, E., Akdemir, Z. C., Gambin, T., Atik, M. M., Gu, S., et al. (2016). Exome sequencing in mostly consanguineous Arab families with neurologic disease provides a high potential molecular diagnosis rate. *BMC Med. Genomics* 9 (1), 42. 10.1186/s12920-016-0208-3.”

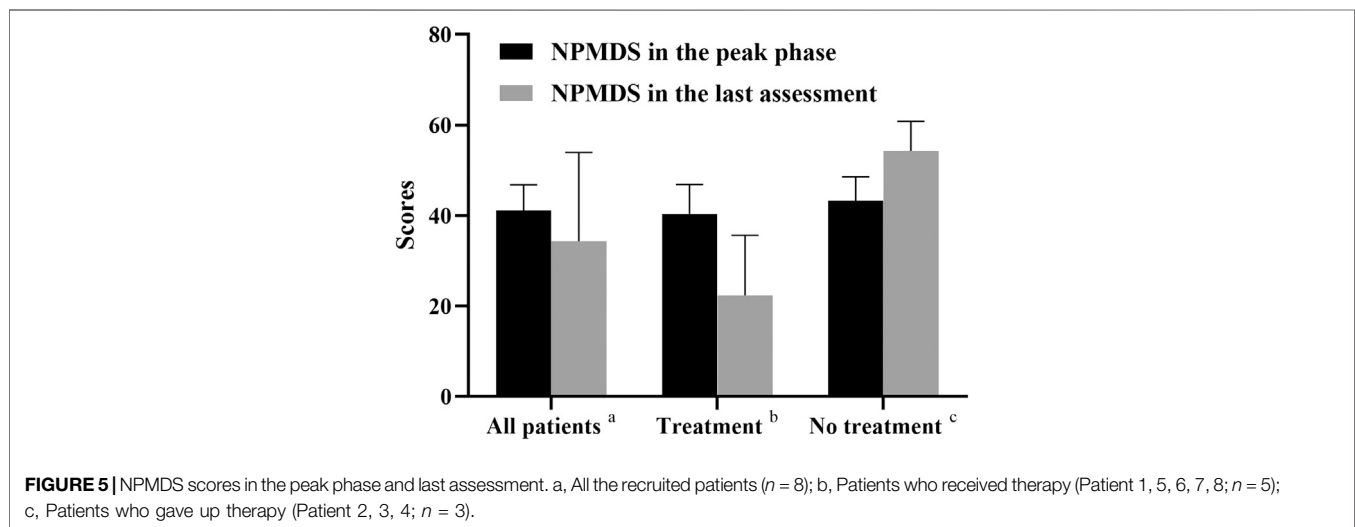
Additionally, there was a mistake in **Table 2** as published. The forms of the first row of **Table 2** were incorrectly shifted to the left as a whole. The corrected **Table 2** appears below.

The authors apologize for this error and state that this does not change the scientific conclusions of the article in any way. The original article has been updated.

Copyright © 2021 Wang, Liu, Xu, Han, Ren, Yang, Zhang and Fang. This is an open-access article distributed under the terms of the Creative Commons Attribution License (CC BY). The use, distribution or reproduction in other forums is permitted, provided the original author(s) and the copyright owner(s) are credited and that the original publication in this journal is cited, in accordance with accepted academic practice. No use, distribution or reproduction is permitted which does not comply with these terms.

TABLE 2 | Metabolite results of extensive investigations of eight patients with *HIBCH* mutations.

	C4-OH (0.00–0.26 $\mu\text{mol/L}$)			23DH2MB (0.0005–0.0029)		SCPCM (<0.624 $\mu\text{mol/mmol Cr}$)		Lactic acid	
	Peak phase	Recovery phase	Neonatal period	Peak phase	Recovery phase	Peak phase	Recovery phase	Blood (0.5–2.2 mmol/L)	CSF (1.0–2.78 mmol/L)
Patient 1	0.200	—	—	0.0045 \uparrow	—	—	—	1.51	1.46
Patient 2	1.664 \uparrow	—	—	0.0715 \uparrow	—	8.02 \uparrow	—	4.13 \uparrow	—
Patient 3	—	0.184	—	—	0.0063 \uparrow	—	—	1.60	—
Patient 4	0.579 \uparrow	0.183	—	—	0.0123 \uparrow	—	2.74 \uparrow	0.92	—
Patient 5	0.221	—	—	—	—	—	—	5.23 \uparrow	—
Patient 6	0.73 \uparrow	0.174	—	0.0032 \uparrow	—	2.45 \uparrow	—	3.23 \uparrow	—
Patient 7	0.485 \uparrow	—	—	0.0199 \uparrow	—	—	—	1.50	—
Patient 8	1.574 \uparrow	1.235 \uparrow	0.425 \uparrow	—	0.0021	—	—	1.2–2.1	1.50



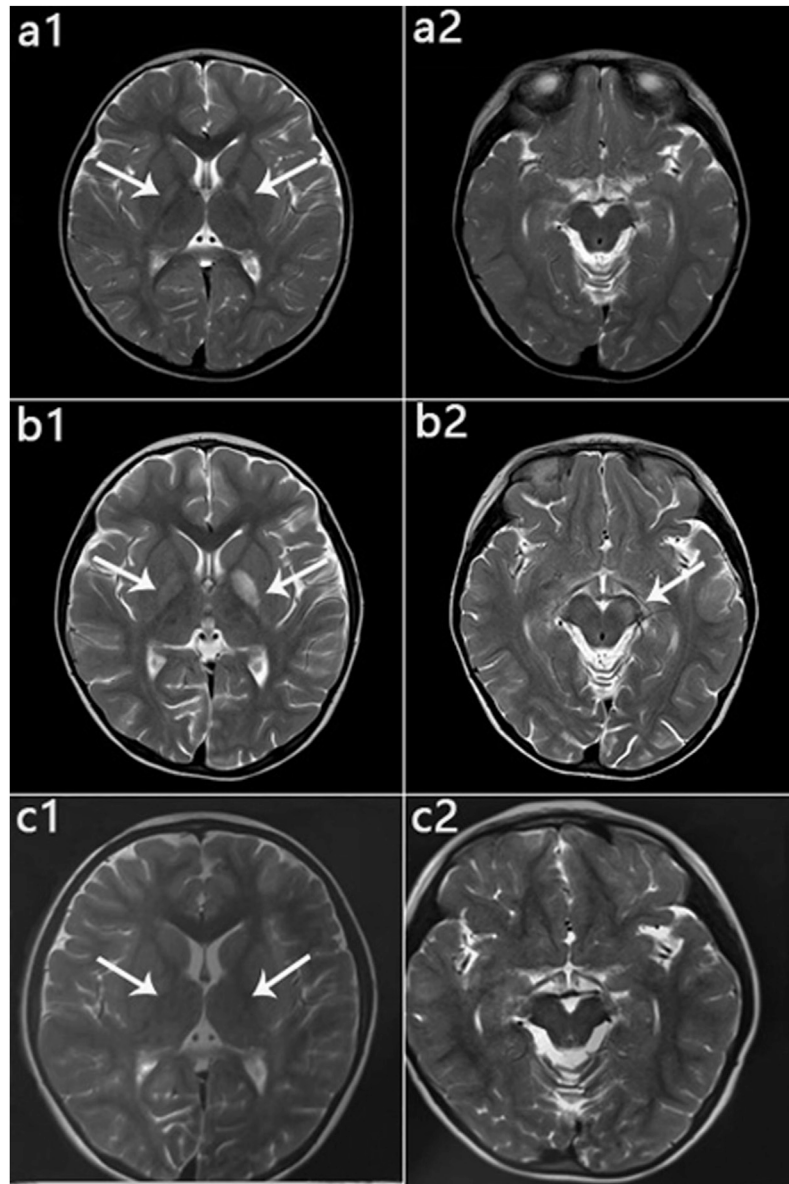


FIGURE 6 | Patient 1: MRI performance in the peak and recovery phases. (a1, a2): Initial MRI obtained at age 2 years; hyperintensity on T2WI in the globus pallidus (a1), normal cerebral peduncle (a2). (b1, b2): MRI performed at 4 years 5 months during the acute stage; hyperintensity on T2WI in the globus pallidus with swelling on the left side (b1) and in the left cerebral peduncle (b2). (c1, c2): MRI performed at 6 years 1 month during the recovery stage; only slightly hyperintensity on T2WI in globus pallidus (c1), and Abnormal signal disappeared in the cerebral peduncle (c2).