

The BJBMS publishes an “Advanced online” manuscript format as a free service to authors in order to expedite the dissemination of scientific findings to the research community as soon as possible after acceptance following peer review and corresponding modification (where appropriate). An “Advanced online” manuscript is published online prior to copyediting, formatting for publication and author proofing, but is nonetheless fully citable through its Digital Object Identifier (doi®). Nevertheless, this “Advanced online” version is NOT the final version of the manuscript. When the final version of this paper is published within a definitive issue of the journal with copyediting, full pagination, etc. the new final version will be accessible through the same doi and this “Advanced online” version of the paper will disappear.

RESEARCH ARTICLE

TRANSLATIONAL AND CLINICAL RESEARCH

Jin et al. : Prognostic nomogram for metaplastic breast cancer

Construction and validation of prognostic nomogram for metaplastic breast cancer

Yongfeng Li ^{1,2}, Daobao Chen ³, Haojun Xuan ³, Mihnea P. Dragomir ^{4,5,6}, George A. Calin ^{4,6}, Xuli Meng ², Meng Chen ^{4,6}, Hongchuan Jin ^{1*}

¹Laboratory of Cancer Biology, Key Lab of Zhejiang Biotherapy, Sir Run Run Shaw Hospital, Zhejiang University School of Medicine, Hangzhou, Zhejiang, China

²Department of General Surgery, Breast Surgery, Zhejiang Provincial People’s Hospital, Affiliated People’s Hospital, Hangzhou Medical college, Hangzhou, Zhejiang, China

³Department of Breast Surgery, Institute of Cancer Research and Basic Medical Sciences of Chinese Academy of Sciences (Zhejiang Cancer Hospital), Hangzhou, Zhejiang, China

⁴Department of Experimental Therapeutics, The University of Texas MD Anderson Cancer Center, Houston, TX, USA

⁵Institute of Pathology, Charité-Universitätsmedizin Berlin, Corporate Member of Freie Universität Berlin, Humboldt-Universität zu Berlin and Berlin Institute of Health, Berlin, Germany

⁶Center for RNA Interference and Non-Coding RNAs, The University of Texas MD Anderson Cancer Center, Houston, TX, United States

***Corresponding author:** Hongchuan Jin, Department of Breast Surgery, Institute of Cancer Research and Basic Medical Sciences of Chinese Academy of Sciences (Zhejiang Cancer Hospital), Guangji Road 38, Hangzhou, 310022, China.

E-mail: hongchuanjin2020@126.com

DOI: <https://doi.org/10.17305/bjbms.2021.5911>

Submitted: 12 April 2021/**Accepted:** 31 May 2021

Conflict of interests: The authors declare no conflict of interests

Funding: The study was supported by the Zhejiang Provincial Health Department Foundation (Grant No. 2018ky284), the Natural Science Foundation of Zhejiang Province (Grant No. LQ17H160013). The funding body was not involved in the design of the study, collection, analysis, and interpretation of data, nor the writing of the manuscript. The content is solely the responsibility of the authors.

Licence: © The Author(s) (2021). This work is licensed under a Creative Commons Attribution 4.0 International License.

ABSTRACT

In this study we aimed to develop nomogram models for predicting the overall survival (OS) and cancer-specific survival (CSS) of patients with metaplastic breast cancer (MBC). Data of patients diagnosed with MBC from 1973 to 2015 were collected from the Surveillance, Epidemiology, and End Results (SEER) database. Univariate and multivariate Cox analyses were performed to identify independent prognostic factors for OS and CSS of MBC patients. The obtained prognostic variables were combined to construct nomogram models for predicting OS and CSS in patients with MBC. Model performance was evaluated using concordance index (C-index) and calibration plots. Data from 1125 patients were collected and divided into a training (750) and a validation (375) cohort. The multivariate Cox model identified age, TNM stage, tumor size, and radiotherapy as independent covariates associated with OS and CSS. The nomogram constructed based on these covariates demonstrated excellent accuracy in estimating 3-, and 5-year OS and CSS, with a C-index of 0.769 (95% CI, 0.731-0.808) for OS and 0.761 (95% CI, 0.713-0.809) for CSS in the training cohort. In the validation cohort, the nomogram-predicted C-index was 0.738 (95%CI, 0.676-0.800) for OS and 0.747 (95%CI, 0.667-0.827) for CSS. All calibration curves exhibited good consistency between predicted and actual survival. The nomogram models established in this study may enhance the accuracy of prognosis prediction and therefore may improve individualized assessment of survival risks and enable constructive therapeutic suggestions.

KEYWORDS: Metaplastic breast cancer; nomogram; overall survival; cancer-specific survival

INTRODUCTION

Metaplastic breast carcinoma (MBC) is a relatively rare form of breast cancer, accounting for 0.2-5% of all breast cancers [1], with worse clinical outcomes and resistance to neoadjuvant systemic chemotherapies [1]. The incidence of MBC has been increasing since it was recognized as a distinct pathological diagnosis in 2000 [3]. Histologically, MBC is classified into several subtypes, including spindle, squamous, chondroid, osseous and/or rhabdomyoid MBC [3]. MBC commonly shows a triple negative breast cancer (TNBC) phenotype, due to the lack of expression of the ER, PR and HER2 [5], and is managed with surgical resection in combination with radiotherapy and chemotherapy [5]. However, only radiotherapy showed an improvement in overall survival (OS) of MBC patients [6,7]. Compared with invasive ductal carcinoma, the 5-year survival rate for MBC remains poor owing to its rapid tumor growth rate and chemoresistance [8,9]. The Surveillance, Epidemiology, and End Results (SEER) database is an annually updated and population-based database in the USA, covering about 30% of the US population. It has become a distinctive resource to investigate special and rare malignancies, such as MBC, by taking advantage of its wide range of data on cancer.

Nomograms have been proposed as a novel and dependable tool to incorporate demographic and clinicopathological factors for accurate prognostic prediction of many cancers [10,11]. They have been generated from regression analysis and have shown to be comparable to the established TNM staging systems. Currently, to our knowledge, there are no available nomograms for predicting survival of the MBC patients. Two nomograms were developed for MBC, one for analyzing the role of chemotherapy in MBC [12] and second for the preoperative prediction of lymph node metastasis in MBC patients [13]. Both studies show the utility of using nomograms for the analysis of MBC in the SEER database. Herein, we aimed to establish a novel nomogram for forecasting individualized survival of MBC depending on the personalized demographic, pathological and therapeutic information from the SEER database.

MATERIALS AND METHODS

Patient population

Data of MBC patients diagnosed between 1973 and 2015 was obtained from the SEER program of the National Cancer Institute (USA). Variables of interest for each case included age at diagnosis, race, grade, histology, status of ER, PR and HER2, American Joint Committee on Cancer (AJCC) tumor stage (7th Edition), T stage, N stage, exact tumor size, and treatment information (including chemotherapy and adjuvant radiotherapy) were obtained from the database. The following SEER ICD-0-3 codes, including 8052, 8070-8072, 8074, 8560, 8571, 8572, 8575, and 8980 were adopted to identify cases of MBC[12]. Patients with missing demographic, pathological or survival data were excluded. **Figure 1** illustrates the detailed flow diagram for patient inclusion. The current study is in accordance with the 1964 Helsinki Declaration and its later amendments, and was conducted in accordance with the ethical standards of the research committees of Zhejiang Cancer hospital.

Threshold selection for continuous variables

The optimal cut-off values for the tumor size and age were calculated using X-tile software. The analysis showed that the optimal cut-off values for the tumor size and age are 58 mm and 58 years old, respectively (**Figure 2**). This data was used to divide the cohorts into two groups based on the optimal cut-off value.

Nomogram construction and conformation

Patients were randomly divided into the training set and validation set at a ratio of 2:1 using random split-sample method [14]. Univariate and multivariate analyses were carried out by employing the Cox proportional hazard regression models to determine the hazard ratio (HR) along with corresponding 95% confidence interval (CI) for all possible risk factors. All independent risk factors were identified by the forward stepwise selection method using the multivariate Cox proportional hazards models. The nomogram was established by combining all independent risk factors for the prediction of the 3-year and 5-year overall survival (OS) and cancer-specific survival (CSS) using the “rms” R package (cran.rproject.org/web/packages/rms). The Harrell’s concordance index (C-index) was used to assess the discrimination. Calibration curves were applied to estimate the consistency between the actual prognosis and the nomogram-predicted survival probability of the model.

Ethical statement

Data used in the present study were obtained freely from the SEER database, which is a public research resource. Therefore, ethical approval for the study was exempted by the institutional review board.

Statistical analysis

IBM SPSS statistics 22 software (SPSS Inc., Chicago, IL, USA) was used to conduct statistical analysis. R software v 3.6.1 (<http://www.r-project.org>) was adopted to construct nomograms based on the multivariate results and the “RMS” package was used to develop survival models. A two-tailed p-value <0.05 was considered statistically significant.

RESULTS

Patients' features

We enrolled in this study 1125 patients with MBC. The demographic and clinical characteristics of the included patients were presented in **Table 1**. Of these patients, 637 (56.62%) were diagnosed with MBC at the age of 58 years or older. We selected the 58 years old threshold by using x-tile software to obtain an optimal cut-off value for continuous variables. The majority of the patients 862 (76.62%) were White. By using the same x-tile software to obtain an optimal cut-value for tumor size, the patients were divided into two groups, including 967 patients with tumor size < 58 mm, and 161 patients with tumor size > 58 mm. Regarding the degree of cancer cell differentiation, Grade 3 was the most common type, 904 patients (80.36%). Regarding the hormone receptors and HER2 status, 880 (78.22%) were ER negative, 975 (86.67%) were PR negative and 1061 (94.31%) were HER2 negative. According to the AJCC7 system, stage II was the dominant one 695 (61.78%), followed by stage I 269 (23.91%), and stage III 161 (14.31%). Most patients were diagnosed with T2 stage 583 (51.82%). The majority of the patients, 880 (78.22%), were diagnosed as N0 stage. Regarding the therapy regime, more than half of

patients 747 (66.40%) had undergone chemotherapy, while 529 (47.02%) patients had undergone radiotherapy. For validation purposes the entire patient cohort was divided into the training cohort (750) and validation cohort (375).

Prognostic factors of overall survival and cancer specific survival

According to the univariate analysis performed among the training cohort, eight variables, including age ($p < 0.001$), tumor size ($p < 0.001$), AJCC TNM stage ($p < 0.001$), T stage ($p < 0.001$), N stage ($p < 0.001$), chemotherapy ($p < 0.001$) and radiotherapy ($p < 0.001$) were significantly associated with OS in patients with MBC (**Table 2**). These variables, except for age and chemotherapy, were also found to be significantly associated with CSS in the univariate analysis (**Table 3**). Next, multivariate analysis indicated that age ($p = 0.001$), AJCC TNM stage ($p = 0.001$), tumor size ($p < 0.001$), and radiotherapy ($p = 0.001$) are independent prognostic factors of OS of patients with MBC (**Table 2**). Moreover, age ($p = 0.022$), AJCC TNM stage ($p = 0.001$), tumor size ($p < 0.01$), and radiotherapy ($p < 0.009$) were also identified as independent prognostic factors of CSS of MBC patients in the multivariate analysis (**Table 3**).

Construction and validation of OS and CSS nomograms

According to the results of the multivariate analysis, all independent prognostic factors in the training set were incorporated to create nomograms for estimating the 3- and 5- year OS and CSS of MBC patients. In **Figure 3A** and **Figure 3B** we presented the prediction of the 3- and 5-year OS and CSS in the nomograms, respectively.

The validation of the results showed sufficient accuracy in forecasting the prognosis of MBC in both sets. The C-index of the nomogram for OS and CSS was 0.769 (95% CI = 0.731-0.808) and 0.761 (95% CI = 0.713-0.809) in the training set (**Table 4**). The C-index calculated from the validation set was 0.738 (95% CI = 0.676-0.800) for OS and 0.747 (95% CI = 0.667-0.827) for CSS, respectively. The calibration plots showed good

coordination between prediction by nomogram models and observed outcomes in the 3- and 5-year OS and CSS of patients with MBC in both training and validation cohort (**Figure 4**).

DISCUSSION

MBC is a heterogenous subtype of breast cancer, which is relatively rare in everyday clinical practice. Despite several studies that found risk factors related to the clinical outcomes of MBC patients[15-17], there has been no attempt to construct a nomogram based on the various risk factors to predict the survival of MBC. Wright et al.[18] reported that for patients with positive or negative hormone receptors, there was no significant difference in the 5-year survival rate of MBC, which indicates that the status of hormone receptors may not be considered as a prognostic factor of MBC. Additionally, a previous study demonstrated that the molecular subtype of MBC could be an independent predictor [18]. Several studies have revealed that the prognosis of MBC patients with larger tumor and lymph node metastasis is generally poor [15,19]. In recent years, some studies have also focused on the relationship between gene signatures and prognosis of MBC patients, such as high expression of RPL39 [17] and the mutation of the colony stimulating factor 1 receptor (CSF1R) [20], both of which being associated with poor prognosis. Single prognostic factors play a limited role in predicting individual survival probability.

Nomograms are mathematical models for predicting cancer risk, and therapeutic outcomes, and have become a popular clinical decision aid tool[21-23]. It has been revealed that nomograms show more excellent prediction precision and prognostic value in diverse malignancies than the AJCC TNM classification system[24,25]. In this study, we found that several clinicopathological characteristics were independent prognostic factors for OS and CSS of MBC patients, including age, AJCC TNM classification system, tumor size, and radiotherapy. The nomograms established in this study showed favorable discrimination and calibration for 3-year and 5-year OS and CSS of MBC patients, offering a more accurate, and personalized clinical tool for prognosis evaluation of MBC patients.

Prognostic studies have given variable results regarding factors associated with prognosis and survival of cancer patients [26-36]. In the present study, we critically evaluated the prognostic value of various factors based on a large sample of cases of the MBC recorded from the SEER database. The clinical significance of age, TNM stage, tumor size, and radiotherapy in MBC patients were highlighted in the nomogram models. Our result demonstrated that patients over 58 years show unfavorable survival with poor OS and CSS. Old MBC patients generally have a higher-risk histological subtype, which has been considered as an independent risk factor and may eventually result in lower survival [38-40]. Although the majority of patients (66.4%) from our cohort adopted chemotherapy, it had no significant improvement in OS and CSS. This may result from the minimal response to chemotherapy in MBC [27,31,33,41,42]. However, it is difficult to draw conclusions from our data given the lack of details regarding the chemotherapy (type, timing etc.). Previous studies have concluded that radiotherapy was able to improve the survival of patients with MBC [8, 28, 38], and our data also demonstrated that radiotherapy is an independent prognostic factor, being associated with survival probability of patients with MBC [9,34,43]. Moreover, radiotherapy has shown to reduce the risk of local recurrence [44]. The addition of radiotherapy can reduce residual lesions in the surgical area or regional lymph nodes, as well as reduce local recurrence, and distant metastasis [45]. These may contribute to its independent effect on CSS of MBC patients. T stage represents the tumor size, and our results demonstrated that T4 had an impact on OS and CSS in MBC patients, which is in line with previous population-based study of MBC [9]. Lymph node metastasis (LNM) has been identified as a key prognostic indicator for a variety of malignancies, and the number of LNM is a key element of the TNM-staging. Previous studies reported that lymph node status was significantly correlated with survival endpoints in patients with MBC[9]. In the present study, although a higher T and N stage predicted worse OS and CSS, they were not independent prognostic factors for OS or CSS.

This may be due to the integration of T and N stage information in the AJCC stage. There were several potential limitations in this study. First, retrospective data retrieved from the same database was used for the generation and validation of the nomogram models, which may lead to the risk of potential selection bias. Therefore, it would be more reliable to validate the nomograms in other clinical cohorts. Second, in this study, we only included the OS and CSS. The assessment of recurrence risk is considered as a more meaningful endpoint than OS or CSS, but is unavailable in the SEER database. Moreover, several other crucial prognostic factors, such as RET mutation status and calcitonin doubling times, were also unavailable in the SEER database.

CONCLUSION

In the present study, age, AJCC stage, tumor size, and radiotherapy were identified as independent prognostic factors for OS and CSS of MBC. We successfully established and validated nomograms constructed using these independent prognostic factors that reliably predict the 3- and 5-year OS and CSS of MBC patients. These nomograms could assist clinicians to estimate the aggressiveness of the tumor and make individualized decisions.

REFERENCES

1. Moreno AC, Lin YH, Bedrosian I, Shen Y, Babiera GV, Shaitelman SF. Outcomes after Treatment of Metaplastic Versus Other Breast Cancer Subtypes. *J. Cancer* 2020; 11(6): 1341-1350.
2. Rayson D, Adjei AA, Suman VJ, Wold LE, Ingle JN. Metaplastic breast cancer: prognosis and response to systemic therapy. *Ann. Oncol.* 1999; 10(4): 413-419.
3. Lee H et al. Metaplastic breast cancer: clinicopathological features and its prognosis. *J. Clin. Pathol.* 2012; 65(5): 441-446.
4. Lakhani S, Ellis I, Schnitt S, Tan P, van de Vijver M 2012 *WHO Classification of Tumours of the Breast*. Lyon: IARC.
5. Corso G et al. Metaplastic breast cancer: Prognostic and therapeutic considerations. *J. Surg. Oncol.* 2020;
6. He X et al. Prognosis in different subtypes of metaplastic breast cancer: a population-based analysis. *Breast Cancer Res Treat* 2019; 173(2): 329-341.

7. Li Y, Chen M, Pardini B, Dragomir MP, Lucci A, Calin GA. The role of radiotherapy in metaplastic breast cancer: a propensity score-matched analysis of the SEER database. *J. Transl. Med.* 2019; 17(1): 318.
8. Tray N, Taff J, Adams S. Therapeutic landscape of metaplastic breast cancer. *Cancer Treat. Rev.* 2019; 79(101888).
9. Nelson RA, Guye ML, Luu T, Lai LL. Survival outcomes of metaplastic breast cancer patients: results from a US population-based analysis. *Ann. Surg. Oncol.* 2015; 22(1): 24-31.
10. Liu X et al. Construction and verification of prognostic nomogram for early-onset esophageal cancer. *Bosn J Basic Med Sci* 2021;
11. Dai L et al. Development and validation of prognostic nomogram for lung cancer patients below the age of 45 years. *Bosn J Basic Med Sci* 2020;
12. Lan T et al. The Role of Adjuvant Chemotherapy in Metaplastic Breast Carcinoma: A Competing Risk Analysis of the SEER Database. *Frontiers in oncology* 2021; 11(572230).
13. Zhang M et al. Nomogram for predicting preoperative regional lymph nodes metastasis in patients with metaplastic breast cancer: a SEER population-based study. *BMC Cancer* 2021; 21(1): 565.
14. Qiao F, He B, Zhang J, Sun J, Dong R, Zhang X. Establishment and validation of a predictive nomogram for extended operation time following mandibular third molar removal. *Clin Oral Investig* 2021; 25(4): 1915-1923.
15. Xiao M, Yang Z, Tang X, Mu L, Cao X, Wang X. Clinicopathological characteristics and prognosis of metaplastic carcinoma of the breast. *Oncol. Lett.* 2017; 14(2): 1971-1978.
16. Lee H et al. Metaplastic breast cancer: clinicopathological features and its prognosis. *J. Clin. Pathol.* 2012; 65(5): 441-446.
17. Dave B et al. Role of RPL39 in metaplastic breast cancer. *JNCI: Journal of the National Cancer Institute* 2017; 109(6): w292.
18. Wright GP, Davis AT, Koehler TJ, Melnik MK, Chung MH. Hormone receptor status does not affect prognosis in metaplastic breast cancer: a population-based analysis with comparison to infiltrating ductal and lobular carcinomas. *Ann. Surg. Oncol.* 2014; 21(11): 3497-3503.
19. Song Y et al. Unique clinicopathological features of metaplastic breast carcinoma compared with invasive ductal carcinoma and poor prognostic indicators. *World J. Surg. Oncol.* 2013; 11(1): 129.

20. Edenfield J, Schammel C, Collins J, Schammel D, Edenfield WJ. Metaplastic breast cancer: molecular typing and identification of potential targeted therapies at a single institution. *Clin. Breast Cancer* 2017; 17(1): e1-e10.
21. Iasonos A, Schrag D, Raj GV, Panageas KS. How to build and interpret a nomogram for cancer prognosis. *J. Clin. Oncol.* 2008; 26(8): 1364-1370.
22. Balachandran VP, Gonen M, Smith JJ, DeMatteo RP. Nomograms in oncology: more than meets the eye. *The lancet oncology* 2015; 16(4): e173-e180.
23. Attiyeh MA et al. Development and validation of a multi-institutional preoperative nomogram for predicting grade of dysplasia in intraductal papillary mucinous neoplasms (IPMNs) of the pancreas: a report from the pancreatic surgery consortium. *Ann. Surg.* 2018; 267(1): 157-163.
24. Wang Z, Qiu M, Jiang Y, Zhou Z, Li G, Xu R. Comparison of prognostic nomograms based on different nodal staging systems in patients with resected gastric cancer. *J. Cancer* 2017; 8(6): 950.
25. Zhang Z, Luo Q, Yin X, Dai Z, Basnet S, Ge H. Nomograms to predict survival after colorectal cancer resection without preoperative therapy. *BMC Cancer* 2016; 16(1): 658.
26. Foschini MP, Dina RE, Eusebi V, 1993. Sarcomatoid neoplasms of the breast: proposed definitions for biphasic and monophasic sarcomatoid mammary carcinomas., pp 128-136.
27. Rayson D, Adjei AA, Suman VJ, Wold LE, Ingle JN. Metaplastic breast cancer: prognosis and response to systemic therapy. *Ann. Oncol.* 1999; 10(4): 413-419.
28. Hennessy BT et al. Biphasic metaplastic sarcomatoid carcinoma of the breast. *Ann. Oncol.* 2006; 17(4): 605-613.
29. Tse GM, Tan PH, Putti TC, Lui PC, Chaiwun B, Law BK. Metaplastic carcinoma of the breast: a clinicopathological review. *J. Clin. Pathol.* 2006; 59(10): 1079-1083.
30. Luini A et al. Metaplastic carcinoma of the breast, an unusual disease with worse prognosis: the experience of the European Institute of Oncology and review of the literature. *Breast Cancer Res. Tr.* 2007; 101(3): 349-353.
31. Jung S et al. Worse prognosis of metaplastic breast cancer patients than other patients with triple-negative breast cancer. *Breast Cancer Res. Tr.* 2010; 120(3): 627-637.
32. Yamaguchi R et al. Clinicopathologic study of 53 metaplastic breast carcinomas: their elements and prognostic implications. *Hum. Pathol.* 2010; 41(5): 679-685.
33. Bae S Y et al. The prognoses of metaplastic breast cancer patients compared to those of triple-negative breast cancer patients. *Breast Cancer Res. Tr.* 2011; 126(2): 471-478.

34. Tseng WH, Martinez SR. Metaplastic breast cancer: to radiate or not to radiate? *Ann. Surg. Oncol.* 2011; 18(1): 94-103.
35. Lee H et al. Metaplastic breast cancer: clinicopathological features and its prognosis. *J. Clin. Pathol.* 2012; 65(5): 441-446.
36. Lester TR et al. Metaplastic sarcomatoid carcinoma of the breast appears more aggressive than other triple receptor-negative breast cancers. *Breast Cancer Res. Tr.* 2012; 131(1): 41-48.
37. Kwong N et al. The influence of patient age on thyroid nodule formation, multinodularity, and thyroid cancer risk. *The Journal of Clinical Endocrinology & Metabolism* 2015; 100(12): 4434-4440.
38. Shen W, Sakamoto N, Yang L. Cancer-specific mortality and competing mortality in patients with head and neck squamous cell carcinoma: a competing risk analysis. *Ann. Surg. Oncol.* 2015; 22(1): 264-271.
39. Skillington SA, Kallogjeri D, Lewis JS, Piccirillo JF. Prognostic importance of comorbidity and the association between comorbidity and p16 in oropharyngeal squamous cell carcinoma. *JAMA Otolaryngology–Head & Neck Surgery* 2016; 142(6): 568-575.
40. Wray CJ et al. The effect of age on race-related breast cancer survival disparities. *Ann. Surg. Oncol.* 2013; 20(8): 2541-2547.
41. Moulder S et al. Responses to liposomal Doxorubicin, bevacizumab, and temsirolimus in metaplastic carcinoma of the breast: biologic rationale and implications for stem-cell research in breast cancer. *J. Clin. Oncol.* 2011; 29(19): e572-e575.
42. Nagao T, Kinoshita T, Hojo T, Tsuda H, Tamura K, Fujiwara Y. The differences in the histological types of breast cancer and the response to neoadjuvant chemotherapy: the relationship between the outcome and the clinicopathological characteristics. *The Breast* 2012; 21(3): 289-295.
43. Ong C et al. Metaplastic breast cancer treatment and outcomes in 2500 patients: a retrospective analysis of a national oncology database. *Ann. Surg. Oncol.* 2018; 25(8): 2249-2260.
44. Leyrer C et al. Predictive factors on outcomes in metaplastic breast cancer. *Breast Cancer Res. Tr.* 2017; 165(3): 499-504.
45. Speers C, Pierce LJ. Postoperative Radiotherapy After Breast-Conserving Surgery for Early-Stage Breast Cancer: A Review. *JAMA Oncol* 2016; 2(8): 1075-1082.
46. Han M et al. Metaplastic breast carcinoma: a clinical-pathologic study of 97 cases with subset analysis of response to neoadjuvant chemotherapy. *Modern Pathol.* 2019; 1.

47. Zhang Yet al. Clinicopathological features and prognosis of metaplastic breast carcinoma: experience of a major Chinese cancer center. PLoS One 2015; 10(6): e131409.

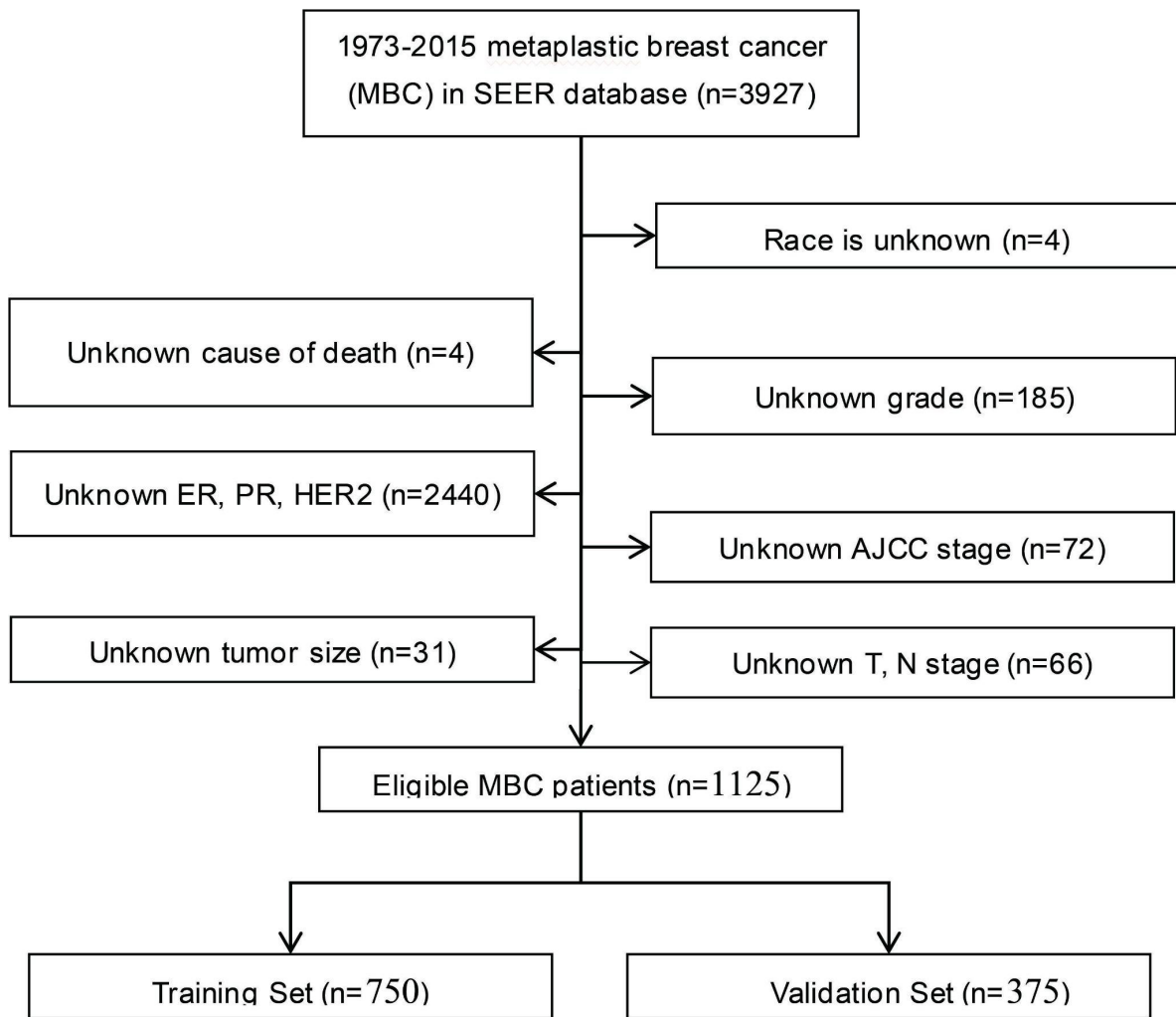


Figure 1. The flow chart of patient selection.

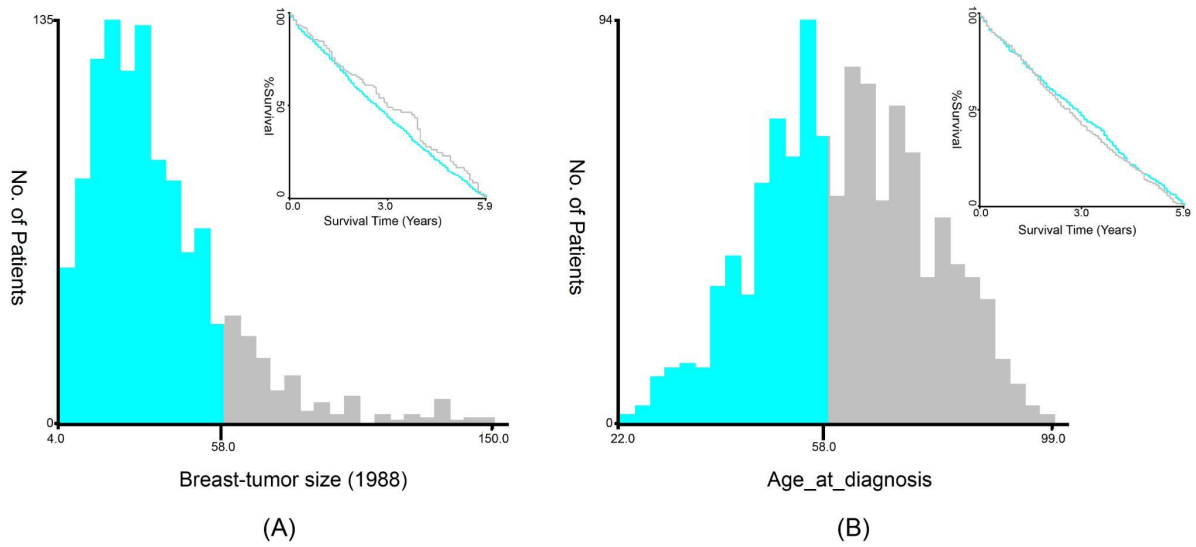
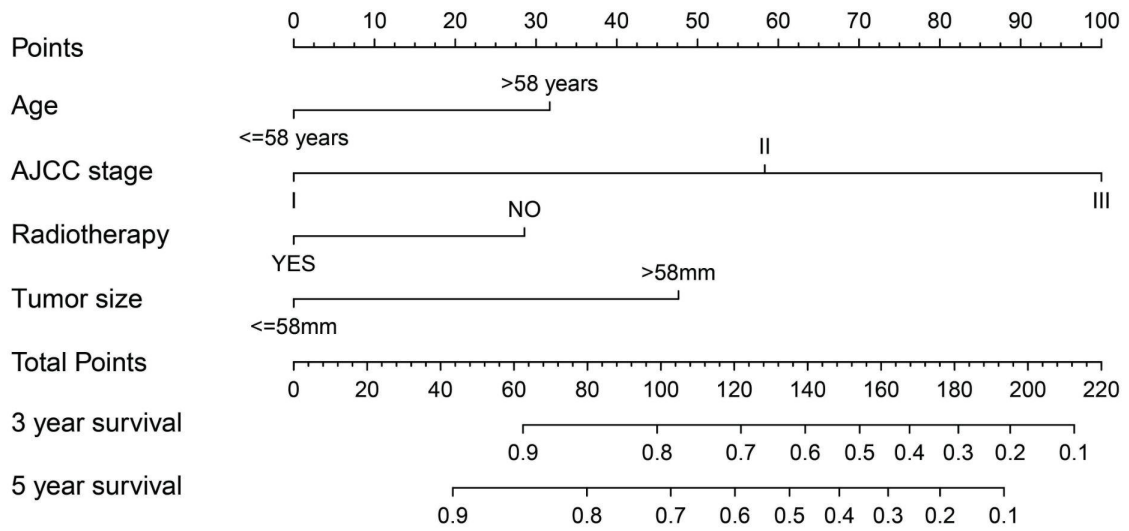
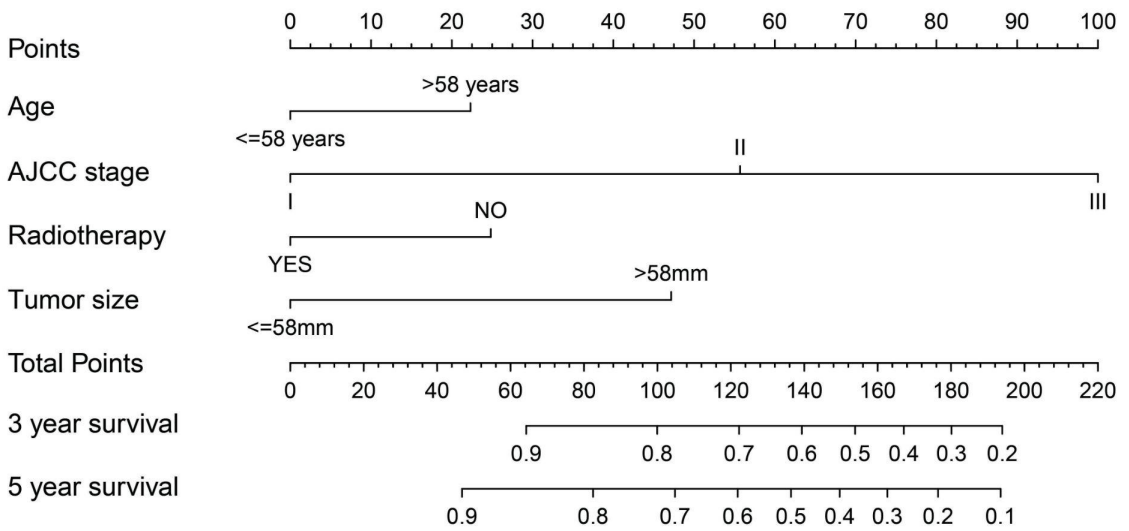


Figure 2. The X-tile analysis was implemented for the MBC patient cohort to ascertain the optimal threshold for (A) tumor size, and (B) age. The figure shows that the optimal cut-off point for tumor size and age for MBC patients is 58 mm (A) and 58 years old (B).



(A)



(B)

Figure 3. Nomograms for predicting the 3-, and 5-year (a) overall survival and (b) cancer-specific survival of MBC.

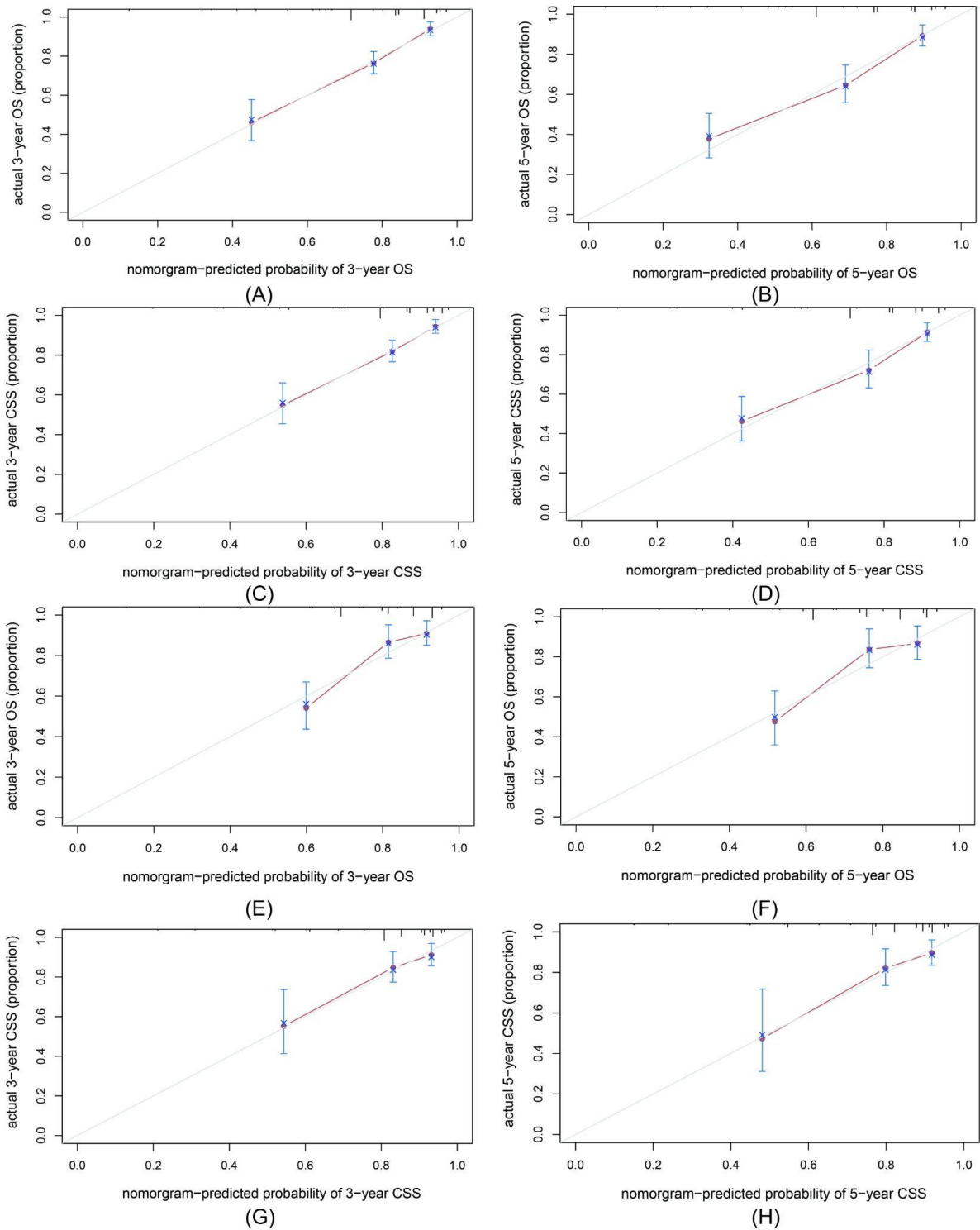


Figure 4. The calibration curves for predicting the survival of MBC patients. The overall survival (A, B) and cancer-specific survival (C, D) in the training cohort at 3 and 5 years after diagnosis, and the overall survival (E, F) and cancer-specific survival (G, H) in the validation cohort at 3 and 5 years after diagnosis.

Table 1. Characteristics of the training and validation cohorts

Variables	All patients (N=1125)		Training set (n=750)		Validation set (n=375)	
	N	%	N	%	N	%
Age (years)						
≤58	488	43.38	309	41.20	179	47.73
>58	637	56.62	441	58.80	196	52.27
Race						
Black	180	16.00	129	17.20	51	13.60
White	862	76.62	561	74.80	301	80.27
Others	83	7.38	60	8.00	23	6.13
Tumor size (mm)						
≤58	967	85.96	647	86.27	320	85.33
>58	161	14.31	106	14.13	55	14.67
Histology						
Metaplastic carcinoma, NOS	982	87.29	657	87.60	325	86.67
Squamous cell carcinoma, NOS	70	6.22	47	6.27	23	6.13
Adenosquamous carcinoma	54	4.80	32	4.27	22	5.87
Adenocarcinoma with spindle cell metaplasia	19	1.69	14	1.87	5	1.33
Grade						
G1	61	5.42	40	5.33	21	5.60
G2	160	14.22	105	14.00	55	14.67
G3	904	80.36	605	80.67	299	79.73
ER						
negative	880	78.22	592	78.93	288	76.80
positive	245	21.78	158	21.07	87	23.20

PR						
negative	975	86.67	659	87.87	316	84.27
positive	150	13.33	91	12.13	59	15.73
HER2						
negative	1061	94.31	706	94.13	355	94.67
positive	64	5.69	44	5.87	20	5.33
AJCC7 TNM Stage						
I	269	23.91	181	24.13	88	23.47
II	695	61.78	460	61.33	235	62.67
III	161	14.31	109	14.53	52	13.87
T stage						
T1	298	26.49	200	26.67	98	26.13
T2	583	51.82	390	52.00	193	51.47
T3	177	15.73	110	14.67	67	17.87
T4	67	5.96	50	6.67	17	4.53
N stage						
N0	880	78.22	587	78.27	293	78.13
N1	176	15.64	118	15.73	58	15.47
N2	50	4.44	32	4.27	18	4.80
N3	19	1.69	13	1.73	6	1.60
Chemotherapy						
No	378	33.60	254	33.87	124	33.07
Yes	747	66.40	496	66.13	251	66.93
Radiotherapy						
No	596	52.98	402	53.60	194	51.73
Yes	529	47.02	348	46.40	181	48.27

Abbreviation: ER, estrogen receptor; HER2, human epidermal growth factor receptor-2; NOS, not otherwise specified; PR, progesterone receptor.

Table 2. Univariate and multivariate analyses of variables associated with OS

Variables	Univariate analysis		Multivariate analysis	
	HR (95%CI)	P value	HR (95%CI)	P value
Age (years)				
≤58	Reference			
>58	1.758 (1.225-2.524)	0.002	1.908 (1.322-2.756)	0.001
Race				
Black	Reference			
White	0.933 (0.491-1.773)	0.832		
Others	0.685 (0.391-1.201)	0.186		
Tumor size (mm)				
≤58	Reference			
>58	4.587 (3.231-6.512)	<0.001	2.645 (1.736-4.030)	<0.001
Histology				
Metaplastic carcinoma, NOS	Reference			
Squamous cell carcinoma, NOS	1.430 (0.789-2.591)	0.238		
Adenosquamous carcinoma	0.530 (0.169-1.669)	0.278		
Adenocarcinoma with spindle cell metaplasia	2.065 (0.843-5.060)	0.113		
Grade				
G1	Reference			

G2	2.082 (0.610-7.104)	0.242		
G3	2.660 (0.846-8.368)	0.094		
ER				
negative	Reference			
positive	1.049 (0.692-1.589)	0.822		
PR				
negative	Reference			
positive	1.185 (0.693-2.027)	0.534		
HER2				
negative	Reference			
positive	0.585 (0.240-1.430)	0.240		
AJCC7 TNM Stage		<0.001		<0.001
I	Reference			
II	3.815 (1.914-7.605)	<0.001	3.309 (1.652-6.628)	0.001
III	11.968 (5.876-24.377)	<0.001	7.726 (3.567-16.734)	<0.001
T Stage		<0.001		
T1	Reference			
T2	2.440 (1.340-4.446)	0.004		
T3	7.746 (4.132-14.522)	<0.001		
T4	11.148 (5.696-21.817)	<0.001		
N Stage		<0.001		
N0	Reference			
N1	1.743 (1.138-2.668)	0.011		

N2	3.176 (1.773-5.689)	< 0.001		
N3	4.122 (1.998-8.503)	< 0.001		
Chemotherapy				
No	Reference			
Yes	0.640 (0.457-0.897)	0.010		
Radiotherapy				
No	Reference			
Yes	0.594 (0.420-0.839)	0.003	0.558 (0.392-0.795)	0.001

Abbreviation: ER, estrogen receptor; HER2, human epidermal growth factor receptor-2; NOS, not otherwise specified; PR, progesterone receptor.

Table 3. Univariate and multivariate analyses of variables associated with CSS

Variables	Univariate analysis		Multivariate analysis	
	HR (95%CI)	P value	HR (95%CI)	P value
Age (years)				
≤58	Reference			
>58	1.439 (0.972-2.130)	0.069	1.593(1.069-2.374)	0.022
Race				
Black	Reference			
White	0.732 (0.454-1.178)	0.198		
Others	1.270 (0.640-2.521)	0.495		
Tumor size (mm)				
≤58	Reference			
>58	4.587 (3.231-6.512)	<0.001	2.684 (1.678-4.292)	<0.001
Histology				
Metaplastic carcinoma, NOS	Reference			
Squamous cell carcinoma, NOS	1.039 (0.482-2.240)	0.922		
Adenosquamous carcinoma	0.660 (0.209-2.084)	0.479		
Adenocarcinoma with spindle cell metaplasia	2.565 (1.042-6.316)	0.040		
Grade				
G1	Reference			
G2	1.832 (0.401-8.365)	0.434		
G3	3.304 (0.814-13.400)	0.094		
ER				
negative	Reference			
positive	1.051 (0.668-1.653)	0.831		
PR				

negative	Reference			
positive	0.928 (0.520-1.657)	0.801		
HER2				
negative	Reference			
positive	0.744 (0.303-1.825)	0.518		
AJCC7 Stage	TNM	<0.001		<0.001
I	Reference			
II	3.718 (1.699-8.136)	0.001	3.223 (1.465-7.090)	0.004
III	13.145 (5.902-29.280)	<0.001	8.128 (3.406-19.395)	<0.001
T Stage		<0.001		
T1	Reference			
T2	2.429 (1.226-4.815)	0.011		
T3	8.484 (4.178-17.229)	<0.001		
T4	11.526 (5.388-24.659)	<0.001		
N Stage		<0.001		
N0	Reference			
N1	2.185 (1.385-3.447)	0.001		
N2	3.964 (2.140-7.343)	<0.001		
N3	4.187 (1.814-9.666)	0.001		
Chemotherapy				
No	Reference			
Yes	1.012 (0.679-1.509)	0.953		
Radiotherapy				
No	Reference			
Yes	0.659 (0.449-0.966)	0.033	0.595 (0.402-0.880)	0.009

Abbreviation: ER, estrogen receptor; HER2, human epidermal growth factor receptor-2; NOS, not otherwise specified; PR, progesterone receptor.

Table 4. The C-index of nomogram for OS and CSS in patients with MBC

Survival	Training cohort		Validation cohort	
	HR	95% CI	HR	95% CI
OS	0.769	0.731-0.808	0.738	0.676-0.800
CSS	0.761	0.713-0.809	0.747	0.667-0.827

Abbreviation: CI, confidence interval; CSS, cancer specific survival; HR, hazard ratio; OS, overall survival.