



Single-Cell Transcriptomics Reveals the Cellular Heterogeneity of Cardiovascular Diseases

Mengxia Fu^{1,2} and Jiangping Song^{1,2,3*}

¹ State Key Laboratory of Cardiovascular Disease, Fuwai Hospital, National Center for Cardiovascular Diseases, Chinese Academy of Medical Sciences and Peking Union Medical College, Beijing, China, ² The Cardiomyopathy Research Group at Fuwai Hospital, Beijing, China, ³ Department of Cardiovascular Surgery, Fuwai Hospital, National Center for Cardiovascular Diseases, Chinese Academy of Medical Sciences and Peking Union Medical College, Beijing, China

“A world in a wild flower, and a bodhi in a leaf,” small cells contain huge secrets. The vasculature is composed of many multifunctional cell subpopulations, each of which is involved in the occurrence and development of cardiovascular diseases. Single-cell transcriptomics captures the full picture of genes expressed within individual cells, identifies rare or *de novo* cell subpopulations, analyzes single-cell trajectory and stem cell or progenitor cell lineage conversion, and compares healthy tissue and disease-related tissue at single-cell resolution. Single-cell transcriptomics has had a profound effect on the field of cardiovascular research over the past decade, as evidenced by the construction of cardiovascular cell landscape, as well as the clarification of cardiovascular diseases and the mechanism of stem cell or progenitor cell differentiation. The classification and proportion of cell subpopulations in vasculature vary with species, location, genotype, and disease, exhibiting unique gene expression characteristics in organ development, disease progression, and regression. Specific gene markers are expected to be the diagnostic criteria, therapeutic targets, or prognostic indicators of diseases. Therefore, treatment of vascular disease still has lots of potentials to develop. Herein, we summarize the cell clusters and gene expression patterns in normal vasculature and atherosclerosis, aortic aneurysm, and pulmonary hypertension to reveal vascular heterogeneity and new regulatory factors of cardiovascular disease in the use of single-cell transcriptomics and discuss its current limitations and promising clinical potential.

Keywords: heterogeneity, vasculature, aortic aneurysm, atherosclerosis, pulmonary hypertension, single-cell transcriptomics

INTRODUCTION

Vasculature

The vascular system is a closed circulatory system composed of arteries, veins, and capillaries. It is distributed in various organs of the body, responsible for transporting gas, nutrients, metabolites, and various cells, providing paracrine signal molecules to surrounding tissues, and participating in a whole set of physiological activities from tissue development and remodeling to metabolism and inflammation (1, 2).

The different origins of germ layer, micromorphology, and classical markers of the endothelial cells (ECs), vascular smooth muscle cells (VSMCs), fibroblasts, immune cells, mesenchymal stem

OPEN ACCESS

Edited by:

Julie A. Phillippi,
University of Pittsburgh, United States

Reviewed by:

Hooi Hooi Ng,
Florida International University,
United States
Khanh-Van Tran,
UMass Memorial Medical Center,
United States

*Correspondence:

Jiangping Song
fwsongjiangping@126.com

Specialty section:

This article was submitted to
Atherosclerosis and Vascular
Medicine,
a section of the journal
Frontiers in Cardiovascular Medicine

Received: 18 December 2020

Accepted: 13 May 2021

Published: 11 June 2021

Citation:

Fu M and Song J (2021) Single-Cell
Transcriptomics Reveals the Cellular
Heterogeneity of Cardiovascular
Diseases.
Front. Cardiovasc. Med. 8:643519.
doi: 10.3389/fcvm.2021.643519

cells, and pericytes allow each to perform their function correctly. ECs form the intima of blood vessels and direct contact with the cells and molecular components of blood. They are not only barriers but also endocrine cells, controlling the relaxation and contraction of blood vessels and blood coagulation. VSMCs form the media of blood vessels, providing structural support and participating in the regulation of vascular tension and blood pressure. Fibroblasts are responsible for depositing extracellular matrix around blood vessels and constructing fiber networks. Immune cells come from circulating blood and vascular adventitia to resist pathogen erosion and maintain vascular health. Mesenchymal stem cells exist in the adventitia of blood vessels and have the ability of multidirectional differentiation. Under pathological conditions, different types of cells and different functional cell subpopulations are involved in the occurrence and development of vascular diseases.

Major Cardiovascular Diseases

Coronary atherosclerosis is the most common cardiovascular disease, which is characterized by chronic inflammation of arteries and formation and accumulation of plaque in the intimal layer. Aortic aneurysm (AA) is a common cardiovascular disease; the pathological features of AA include low-grade inflammation of aortic wall, degradation of extracellular matrix (ECM), and progressive vascular smooth muscle cell (VSMC) degeneration (3). Pulmonary hypertension (PH) is common and characterized by inflammation, pulmonary vascular remodeling, and angio-obstruction (4).

Clinical complications of atherosclerosis, aortic aneurysm, and pulmonary hypertension are the main causes of death worldwide (5–8), hence, a more focused approach is required. As a variety of cell types are involved and/or dysfunctional, a completely effective treatment strategy has not been developed. Attributing the progression of the lesion to a specific cell type is challenging, because of the high heterogeneity of cells not only within but also around the lesion, and single-cell transcriptomics hold a potential in understanding cellular functions, which plays a significant role in contributing to medical science and transcriptomics advancement.

Single-Cell Transcriptomics

Single-cell omics includes single-cell genomics, single-cell transcriptomics, single-cell epigenomics, and single-cell

proteomics. It combines high-throughput omics technology and traditional single-cell research methods to solve the problem of throughput and resolution, enables a comprehensive analysis of cells, and reveals new cell subpopulations and cell interactions.

The widely used single-cell omics technique is single-cell transcriptome sequencing technology. Traditional sequencing methods are performed on tissue samples or cell populations, in which case biological differences between cells may be masked by averaging or mistaken for technical noise. However, each cell is unique—it occupies a unique place in space, carries obvious errors in its replicated genome, and is affected by programmed and induced changes in gene expression. Thus, single-cell transcriptome sequencing is essential for studying single cells. Single-cell transcriptome sequencing enables researchers to zoom in on cell populations and conduct more in-depth studies on them, revealing subtle changes unique to each cell, greatly advancing the field of genomics. It enables the fine distinction of different cell types, making it possible to study molecular mechanisms at the single-cell level. With the continuous development of next-generation sequencing technology, the first truly single-cell transcriptome sequencing technology (scRNA-seq) was developed in 2009 (9). Subsequently, with the benefits of more optimized cell sorting technology and nucleic acid amplification technology, single-cell nuclear RNA sequencing (10) technologies have developed rapidly.

As proteins directly mediate cell functions, it is important to understand their heterogeneity between cells. Traditional fluorescence-activated flow cytometry (FACS) uses up to 10 markers for single cells to avoid spectral overlap, while cytometry by time-of-flight (CyTOF) uses as many as 40 stable metal isotopes to label the protein of interest (11). In addition, the use of time-of-flight detectors to quantify the signal overcomes the limitations of single-cell proteomics analysis due to the lack of starting materials and the inability to directly amplify proteins, making it possible to analyze cell proteomics in the millions. Over the past few years, the single-cell transcriptomics has allowed researchers to delineate vascular cells at an unprecedented resolution. In this review, we will focus on how these collective studies have significantly advanced our understanding of vascular cell subtypes and functional characteristics in humans, mice, and monkeys.

SUBTYPES OF IMMUNE CELLS IN VASCULATURE

Cardiovascular diseases are often accompanied by the infiltration of diverse immune cells (3, 12), especially macrophages, monocytes, B cells, T cells, dendritic cells (DCs), and natural killer cells (NK). The arrival of single-cell transcriptomics is now providing unprecedented opportunities to discover new immune cell subpopulations. Eleven immune cell subpopulations are identified in the aorta of atherosclerotic mice (13); however, only five or less subtypes are identified in healthy mice (14, 15), suggesting a high degree of immune cell heterogeneity in the diseased vasculature. Different species, tissue, disease,

Abbreviations: AA, aortic aneurysm; AAA, abdominal aortic aneurysm; Adv-ECs, adventitia endothelial cells; AECs, arterial endothelial cells; Ao, aortic arch; cMo, conventional monocytes; CyTOF, cytometry by time-of-flight; ECs, endothelial cells; ECM, extracellular matrix; EndMT, endothelial to mesenchymal transition; FMCs, fibroblast-like muscle cells; HECs, hemogenic endothelial cells; HFD, high-fat diet; IL, interleukin; ILCs, innate lymphoid cells; intMo, intermediate monocyte; IPAH, idiopathic pulmonary artery hypertension; PAH, pulmonary artery hypertension; pMo, patrolling monocytes; scRNA-seq, single-cell RNA sequencing; SEM, SMC-derived intermediate; STING, stimulator of interferon genes; TREM2, triggered receptor expressed on myeloid cells 2; VECs, vein endothelial cells; VSMCs, vascular smooth muscle cells; WD, Western diet; WT, wild type.

TABLE 1 | Recent reports identified subtypes of immune cells in vasculature.

Species	Gender and genotype	Tissue	Exposure	Method	Immunocyte subtype		References
					Total clusters	Marker (number of clusters)	
Mus musculus	Female ApoE ^{-/-}	Aorta CD45 ⁺	WD 12 weeks, CHD	scRNA-seq, CyTOF, FACS	11	CD3e ⁺ T(5), CD19 ⁺ B(2), CD11b ⁺ myeloid(3), Klrb1c ⁺ NK(1)	(13)
					5	CD3e ⁺ T(1), CD19 ⁺ B(1), CD68 ⁺ /H2ab1 ⁺ Macro(2), H2ab1 ⁺ Mono(1)	(13)
	Female WT	Aorta	CHD	scRNA-seq	3	Btg1 ⁺ /H2ab1 ⁺ Macro(1), Lyz2 ⁺ /C1qa ⁺ Mono(2)	(14)
					9	B(2), T(4), myeloid (3)	(15)
	Male Ldlr ^{-/-}	Aorta CD45 ⁺	WD 28 weeks	scRNA-seq, FACS	11	CD64 ⁺ /CD206 ⁺ /CD11c ⁺ /Lyve1 ⁺ Macro(8), CD3e/d/g ⁺ /CD8 ⁺ /Foxp3 ⁺ T(1), Flt3 ⁺ /Zbtb46 ⁺ /CD103 ⁺ DC(2)	(16)
					12	CD14 ⁺ /Cebpd ⁺ Mono-Macro(4), CD79a ⁺ /CD19 ⁺ B(3), CD3d ⁺ T(3), Il1r1 ⁺ /Gata3 ⁺ ILCs(1), Gzma ⁺ /Gzmb ⁺ /Klrb1c ⁺ NK(2)	(17)
	Male WT, ApoE ^{-/-}	Aortic adventitia	CHD	scRNA-seq	14	Adgre1 ⁺ /CD14 ⁺ /Cxc12 ⁺ /Csf1r ⁺ /Trem2 ⁺ Macro(3), Ly6c2 ⁺ /F10 ⁺ /Lilrb4a ⁺ Mono(1), CD79a ⁺ /Mzb1 ⁺ B(1), CD8b1 ⁺ /Lck ⁺ /Cxcr6 ⁺ /CD3d ⁺ T(4), DC(2), Gzma ⁺ /Klrb1c ⁺ NK(1), Furin ⁺ /Il1r1 ⁺ Mast(1), Ngp ⁺ /Camp ⁺ Granu(1)	(18)
					9	Adgre1 ⁺ /CD9 ⁺ /Pf4 ⁺ /Il1b1 ⁺ /Trem2 ⁺ Macro(3), CD79a ⁺ /Mzb1 ⁺ B(1), Cxcr6 ⁺ /CD3g ⁺ T(2), CD209 ⁺ DC(1), Gzma ⁺ /Klrb1c ⁺ NK(1), Ly6d ⁺ Mix T/B(1)	(18)
	ApoE ^{-/-}	Abdominal aorta	WD 2 weeks + Ang II 4 weeks	scRNA-seq	5	Adgre1 ⁺ /CD11b ⁺ /CD68 ⁺ Macro(1), CD19 ⁺ B(1), Itgax ⁺ NK(1), CD3e ⁺ T(1), Ly6G/C ⁺ Neutr(1)	(19)
					13	CD68 ⁺ /CD11b ⁺ /CD64 ⁺ /Ly6C ⁻ Macro(1), CD11b ⁺ /Ly6C ⁺ /CCR2 ⁺ Mono(1), CD11b ⁺ /Ly6G/C ⁺ Neutr(1), CD11b ⁺ /SiglecF ⁺ Eosin(1), CD11b ⁺ /CD11c ⁺ /MHCII ^{hi} /CD172a ⁺ DC(3), CD19 ⁺ B(1), NK1.1 ⁺ NK(1), TCRβ ⁺ /CD3 ⁺ /CD4 ⁺ /CD8 ⁺ /TCRγδ ⁺ T(3), Lin ⁻ /CD90.2 ⁺ /IL7Ra ⁺ ILCs(1)	(20)
	Rank ^{Cre} Rosa26 ^{eYFP}	Aortic adventitia CD45 ⁺		scRNA-seq	5	Adgre1 ⁺ /CD11b ⁺ Macro(3), Cd79b ⁺ /Cd19 ⁺ /Ms4a1 ⁺ /Ighd ⁺ B(1), Trbc2 ⁺ /Thy1 ⁺ /Cd3g ⁺ /Cd3d ⁺ /Nkg7 ⁺ T/NK(1)	(21)
					8	Mono/Macro(5), B(1), T(1), DC(1)	(22)
Male 10-week-old C57BL/6J	Infrarenal abdominal aorta	Elastase-induced AAA at 7, 14, and 28 days	scRNA-seq	8	DC(1), Neutr(1), NK(1), T/NK(1), B(1), Macro(3)	(23)	
				20	DC(2), Neutr(1), CD90 ⁺ /CD11c ⁺ /B220 ⁺ NK(3), T(5), B(4), CD115 ⁺ Mono(4), other CD45 ⁺ (1)	(24)	
Male 12-week-old C57BL/6J	Infrarenal abdominal aorta	CaCl ₂ -induced AAA	scRNA-seq	20	DC(2), Neutr(1), CD90 ⁺ /CD11c ⁺ /B220 ⁺ NK(3), T(5), B(4), CD115 ⁺ Mono(4), other CD45 ⁺ (1)	(24)	
				7	T(1), B(1), Mast(1), Macro(1), DC(1), Club/Goblet/Basal(1), NK(1)	(27)	
Homo sapiens	Male and female	Carotid artery plaques CD45 ⁺ , blood CD45 ⁺	CyTOF, CITE-seq, scRNA-seq	15	DC(2), Neutr(1), NK(1), T(7), B(1), Cd14 ⁺ Mono(1), Macro(2)	(25)	
				21	T(4), B(1), Neutr(1), Mast(1), Baso(1), Hla ⁺ /Cd1a ⁺ Macro(4), Mono(3), CD11c ⁺ /CD209 ⁺ DC(6)	(26)	
				7	T(1), B(1), Mast(1), Macro(1), DC(1), Club/Goblet/Basal(1), NK(1)	(27)	

(Continued)

TABLE 1 | Continued

Species	Gender and genotype	Tissue	Exposure	Method	Immunocyte subtype		References
					Total clusters	Marker (number of clusters)	
		ATAA aorta, healthy aorta		scRNA-seq	23	T(11), B(1), Mast(1), Macro(8), NAMPT+ Mono(1), FLT3+ DC(1)	(28)

Different species, tissue, disease, gender, genetic background, and exposure conditions will lead to different subtypes of immune cells. CITE-seq, cellular indexing of transcriptomes and epitopes by sequencing; CyTOF, cytometry by time-of-flight; FACS, fluorescence-activated flow cytometry; IPAH, idiopathic pulmonary hypertension; WT, wild type; WD, Western diet; CHD, chow diet; HFD, high-fat diet; ILCs, innate lymphoid cells; Mast, mast cells; AAA, abdominal aortic aneurysm; ATAA, ascending thoracic aortic aneurysm; Macro, macrophages; Mono, monocytes; Neutr, neutrophils; Baso, basophils; Eosin, eosinophils.

gender, genetic background, and exposure conditions will lead to different subtypes of immune cells (Table 1).

In 2018, the immune composition of human atherosclerotic plaques had been inferred from bulk RNA-seq data and CyTOF using a genetic deconvolution algorithm (13), emphasizing the diversity of immune cells in human plaques and suggesting the composition of immune cells is a potential driver of adverse clinical events. Two years later, Fernandez et al. (25) conducted single-cell proteomics and transcriptomics analyses on human carotid artery plaques to reconfirm and reveal the characteristics of innate and adaptive immune cells in plaques related to cerebrovascular clinical events. In patients with adverse clinical events, plaques are significantly infiltrated by activated T cells and proatherosclerotic macrophages, while the IL-1 β signaling pathway is activated in asymptomatic patients, suggesting that immunotherapy must be adjusted for specific immune deficiency. $\gamma\delta$ T cells serve as a bridge between innate and adaptive immune responses (29), in IPAH lungs, the main type of CD45⁺ cells change from neutrophils to T cells, with increases in $\gamma\delta$ T cell subtypes. Additionally, diversely activated classic myeloid dendritic cells, non-classical plasma cell-like dendritic cells, mast cells, and basophils are more abundant in IPAH lungs (26), macrophages may not be as active or may display more heterogeneous properties (27). The identification of different subtypes and rare cell subpopulations is of great significance to cardiovascular diseases.

SUBTYPES OF MACROPHAGES IN VASCULATURE

Monocytes in blood, together with tissue-intrinsic macrophages and dendritic cells (DCs), are classified as mononuclear phagocytes (30), contributing to tissue homeostasis and anti-inflammation (31). Monocytes differentiate into either M1 or M2 macrophages, with M1 macrophages usually considered proinflammatory and M2 macrophages considered anti-inflammatory (32).

Macrophages in Atherosclerosis

A large number of macrophages accumulate in the atherosclerotic vascular wall (33) through different mechanisms (17, 34). Certain pathways are only enriched in certain subpopulations of macrophages (13), suggesting

that macrophages function differently in regulating the progression of atherosclerotic lesions depending on the gene expression. Macrophages are classified into inflammatory macrophages, resident-like (Res-like) macrophages, and TREM2^{hi} macrophages (18), which are found together in the advanced stages of the disease. Inflammatory macrophages highly express atherogenic genes, macrophage Lgals3 (17) and M1, and Mox macrophage-related genes, suggesting that the feedback inhibition pathway of inflammatory response is activated. Res-like macrophages highly expressed chemokines and M2 macrophage-related genes Fcrl2, CD206, and CBr2 (17), with low expression of inflammatory genes Tnf and Il1b, suggesting a considerable anti-atherosclerotic phenotype. However, Res-like macrophages in the diseased adventitial aorta are up-regulated in cell-to-cell adhesion and immune cell migration pathways, which may participate in the response to hyperlipidemia and thus attract immune cells, suggesting their potential role in triggering adventitial inflammation (17). TREM2^{hi} macrophages have a unique genetic profile with high expression of CD9 (functions in cell differentiation, adhesion, and signal transduction), Spp1 (encoding osteopontin), and Hvcn1 (facilitates acute production of reactive oxygen species), suggesting a specific role in lipid metabolism, catabolic metabolism, and lesion calcification. As the disease progresses, the relative increase of total macrophages in CD45⁺ leukocytes is mainly due to the increase of Res-like macrophages and inflammatory macrophages, suggesting that changes in macrophage frequency may occur in advanced atherosclerosis. However, it remains unclear whether absolute changes in the abundance or localization of these macrophage subtypes or their effectors will promote the progression of lesions to advanced plaque phenotypes. The verification of RNA quantification or protein localization of these cell subtypes will greatly improve biological insight, which is lacking in some of the latest reports.

When we try to understand the pathogenesis of atherosclerosis and explore new therapeutic targets, the formation of foamy cells and its role in atherosclerosis are important topics (35). Using fluorescent lipid probes combined with FACS and scRNA-seq technology reveals that macrophage subtypes exhibited unique transcriptome profiles according to their lipid content (16). However, further studies are required to understand the exact origin and characteristics of plaque macrophages. For instance, scRNA-seq analysis of plaque macrophages isolated

from early or advanced plaques will help to dissect macrophage subsets in lesions and understand the phenotypic changes of macrophages during plaque progression. Furthermore, detecting the molecular dynamics of cell fate determination help researchers understand and correct abnormal macrophages behavior during atherosclerosis. Lin et al. (36) used scRNA-seq combined with lineage tracing technology in aortic plaques found that monocyte-derived macrophages in lesion progression and regression stages were divided into 11 subpopulations, of which the four most differentially expressed subpopulations were Fcrl2^{hi} macrophages, chemokine^{hi} macrophages, TREM2^{hi} macrophages, and NMES1^{hi} macrophages, confirming the previous findings of inflammatory macrophages, Res-like macrophages, and TREM2^{hi} macrophages all derived from monocytes and representing the general inflammatory state of atherosclerosis (18). Many macrophage populations shared common characteristics between progression and regression states, which highlights that treatment based on progressing plaque may have unexpected adverse consequences on the regression process. Therefore, it's worth exploring which macrophage subtypes and mechanisms play a key role in plaque regression, the characteristic rapid enrichment of M2 macrophages in mouse atherosclerosis regression models is sufficient for the resolution of inflammation, it depends on STAT6-dependent signaling in the newly recruited monocytes suggest that local factors in the regressing plaque stimulate this signaling enrichment pathway (37). Therapeutic strategies that promote M2 macrophage aggregation in plaque are potential methods to promote plaque regression.

Macrophages in Aortic Aneurysm

During the progression of AA, a significant change of adventitia is the infiltration of macrophages into lesion (3). Macrophages within vascular wall display diverse functions, including amplifying local inflammatory response by secreting pro-inflammatory cytokines, chemokines, proteases, and reactive oxygen species (3, 38, 39).

There are several AA mouse models that recapitulate important features of human AA, in a CaCl₂ model, inflammatory macrophages cluster is responsible for the accumulation of macrophages at an early stage in abdominal aortic aneurysm (AAA) development (23); however, the function of a proliferative cluster in AAA remains to be proven. In the infrarenal abdominal aortas (IAAs) from C57BL/6J mice who undergo elastase-induced AAA, five monocyte/macrophage clusters are identified (22). Notably, the authors determine the expression of M1 and M2 macrophage markers in all of the five monocyte and macrophage clusters. Thus, a panel of traditional markers for M1 or M2 macrophages are not sufficiently specific to functionally characterize the cells that express them. Inflammatory macrophages are responsible for the accumulation of macrophages at an early stage in AAA development.

A huge heterogeneous distribution of macrophage clusters is identified in the ascending thoracic aortic aneurysm (ATAA) of patients (28), playing roles in tissue remodeling, glucose metabolism, anti-inflammation, and phagocytosis. Furthermore, the dynamic mechanism of bridging persistent inflammation and

focal ECM erosion has been revealed, and netrin-1 (Ntn1) is identified as an instrumental signal to maintain this destructive response (19). In this study, the immune cells account for no more than 10% of the total cells in the angiotensin II-induced AAA model. However, in Zhang's study (22), immune cells accounted for more than 60% of total cells isolated from elastase-treated IAAs, this variation is more likely the result of the intrinsic differences in the pathophysiological aspects of the two models, besides, it is important to note that although scRNA-seq data is valuable for analyzing gene expression changes in different populations, it is not the best way to estimate the proportion of cell populations, and more accurate methods, such as FACS, are needed to confirm or deny the actual cell composition. Detailed information about subtypes and functional characteristics of macrophages in vasculature are presented in **Supplementary Table 1**.

SUBTYPES OF MONOCYTES IN VASCULATURE

Monocytes are a heterogeneous group of cells, divided into classical monocytes, non-classical monocytes, and intermediate monocytes. The functions of classical and non-classical monocytes have been clearly defined. The former has pro-inflammatory effects in atherosclerosis (40), the latter plays a role in eliminating inflammation (37, 41), while the functions of intermediate monocytes are mixed (42).

Mouse monocytes are classified into Ly6C^{hi} classical monocytes (cMo), Ly6C^{lo} non-classical circulating monocytes (pMo), and intermediate monocytes (intMo) (43–45). pMo has been shown to play a protective role in atherosclerosis (44) and Lck/yes novel tyrosine kinase (LYN) might serve as a negative regulator of pMo homeostasis (24). Monocytes in human peripheral blood account for about 10% of all circulating immune cells and are classified into classical CD14⁺⁺ CD16⁻ monocytes, non-classical CD14⁺ CD16⁺ monocytes, and intermediate CD14⁺⁺ CD16⁺ monocytes. Recent studies have proved that human monocytes are quite heterogeneous (46), intermediate monocytes are divided into two subpopulations, one of which is cytotoxic (47), single-cell transcriptomics can better define monocyte subpopulations (48). Changes in monocyte profiles are also a feature of human atherosclerotic plaques (13). In the blood of patients with severe coronary heart disease, the frequency of Slan⁺ non-classical monocyte subtypes is significantly increased and shows enhanced exocytosis capacity, indicating its role in protecting atherosclerosis, but also suggesting that Slan protein expression may be an important biomarker for the progression of coronary heart disease (46). A summary of recent reports identified subtypes and functional characteristics of mononuclear phagocytes in vasculature are presented in **Supplementary Table 1**. The transcriptomic profile of human coronary mononuclear phagocytes remains to be deeply elaborated. In fact, the preparation of mononuclear phagocytes for scRNA-seq analyses from human coronary is still highly challenging. However, it is very important to demonstrate whether the transcriptomic profiles of human mononuclear

phagocytes are comparable with those of mice, which will provide new immunological insights into the innate immune responses in atherosclerosis.

SUBTYPES OF T CELLS IN VASCULATURE

More and more evidence showed that the activation of adaptive immune response is related to the occurrence and development of atherosclerosis. Cells expressing MHC II in atherosclerotic plaques at various stages of the disease form the basis of adaptive immune response of atherosclerosis (49). Treg is a specific subtype of T cells, which has been proved to play a leading role in maintaining tolerance and immune homeostasis (50). A team found that the spleen Treg of ApoE^{-/-} mice showed a unique non-inhibitory IFN γ ⁺ Th1/Treg phenotype, indicating that with the development of atherosclerosis, the immunosuppressive phenotype of Treg cells disappeared, revealing the damage of phenotype transformation of Treg cells in atherosclerosis (51). Among the CD4⁺ T cell subpopulations of aorta, one subpopulation is transcriptionally similar to memory T cells, and shows west diet (WD)-induced cell cycle gene enrichment, suggesting a tissue-specific proliferative response (13).

Innate lymphoid cells (ILCs) are located in the mucosal barrier and play an important role in host defense and tissue homeostasis. ILCs are composed of cytotoxic and non-cytotoxic cells and are similar to T lymphocytes in terms of cytotoxicity and cytokine production (52). In the aortic adventitia of ApoE^{-/-} mice, the genes related to IL1 response and oxidant detoxification are upregulated in ILCs subpopulation, and NF- κ B and nucleotide-binding oligomer domain like receptor (NOD) signaling pathways related to innate immunity are upregulated, which further reflect the function of T cells and represent a new immunological pathway (52), indicating that ILCs play an important role in regulating the development of lesions (17).

Using single-cell proteomics and transcriptomics to analyze the heterogeneity between plaques and blood T cells in patients with acute ischemic events reveal the unique differences and highly specialized functions of T cells, and highlight new immune disorders in plaques associated with clinical complications. For example, Fernandez et al. (25) found that T cells in carotid plaque of asymptomatic patients and patients with symptoms were divided into four subpopulations. The plaque of symptomatic patients was rich in CD4⁺ T cells. Pathways of T cell migration (RhoGTPase), activation (PDGFR- β), and differentiation (Wnt, IL-2) are upregulated. T cells were not only prominent in plaques but also had stronger activation, differentiation, and exhaustion capacity than those in blood. In the plaque of asymptomatic patients, most T cells were activated, IL-1 β signaling pathway and IL-1, IL-6 signaling pathways were upregulated, which stabilized cytokine transcripts and promoted T cell survival. However, IL-1 and IL-6 signaling pathways of T cells in the plaque of symptomatic patients with CD4⁺ abundance were inhibited, which indicated that drugs targeting the above pathways may be ineffective after acute ischemia, and new immunotherapy must be precisely customized for immune cell subpopulations (25).

SUBTYPES OF B CELLS IN VASCULATURE

Atherosclerosis is a chronic inflammatory process. Inflammation is related to the accumulation of low-density lipoprotein (LDL). The B1 cell-derived IgM antibody against the specific oxidized epitope of LDL has anti-inflammatory and anti-atherosclerotic effects. Bone marrow B1a cells from ApoE^{-/-} mice express specific IgM antibodies compared with peritoneal B1a cells, and some of them shared the same site sequence, indicating that B1a migrated between bone marrow and abdominal cavity. Further studies have found that mature abdominal B1a cells migrate to bone marrow in a CXCR4 dependent manner, while the expression of CXCR4 on B1 cells is higher in people with smaller coronary plaque areas, which reveals a potential target immunomodulatory method that can limit atherosclerosis (53). Different B cell subpopulations may play different roles in atherosclerosis. B cells in plaque aorta are divided into three subpopulations. The CD11b⁺CD5⁺ B1 subpopulation shows the function of antigen presentation, antibody production and cell adhesion, which is consistent with the protective effect of B1 cells. Two B220⁺CD23⁺ B2 cell subpopulations overexpress apoptotic genes, pro-atherosclerotic factor IFN- γ , and recombinant macrophage granulocyte colony stimulating factor (GM-CSF), suggesting that B2 cell subpopulations can promote atherosclerosis.

Taken together, more and more studies use single-cell transcriptomics to elucidate the role of various immune cell populations after cardiovascular disease, which improves our understanding of the changes of microenvironment in disease progression and regression. Future research will benefit from a more in-depth study of the specific functions of these cell types and transition states, especially at different stages after disease. At present, in disease progression and regression, transcriptome research and subsequent verification of intercellular communication between immune cells and non-immune cells have not been fully studied. To fill these gaps in our knowledge is critical to improving our understanding of the cellular responses involved in the different stages of diseases.

SUBTYPES OF ENDOTHELIAL CELLS IN VASCULATURE

Endothelial cells (ECs) line the surface of blood vessel lumen and have the functions of actively regulating blood flow, maintaining blood fluidity, controlling the transfer of solutes, and macromolecules between blood and tissues, and regulating the recruitment and activation of circulating immune cells. Dysfunction of ECs lead to various vascular diseases. The heterogeneity of ECs has been recognized by more and more experts in vascular biology. Unbiased analysis of single-cell genomics helps to reveal the role of ECs heterogeneity in vascular physiology and pathology, a summary of recent reports identified subtypes and functional characteristics of ECs in vasculature is presented in **Table 2**.

TABLE 2 | Recent reports identified subtypes and functional characteristics of endothelial cells in vasculature.

Species	Gender and genotype	Tissue	Exposure	Method	ECs subtypes			References			
					Number of Name clusters	Gene expression	Function				
Mus musculus	Female WT	Aorta	CHD	scRNA-seq	3	EC1	CDh5, Vcam1, Clu, Gkn3, Eln	ECM integrin	(14)		
						EC2	CDh5, Cd36, Fabp4, Lpl, Pparg, Flt1	Lipid transport angiogenesis			
						EC3	CDh5, Lyve1	Lymphatic			
	Male ApoE ^{-/-}	Aortic adventitia	CHD	scRNA-seq	1	WD	scRNA-seq	ECs	Myl9, Tagln, Acta2	EndMT	(17)
						Adv-ECs	Inflammatory				
	Male ApoE ^{-/-}	Aorta	WD 16 weeks	scRNA-seq	ECs	Icam1, Vcam1, Il6, Ccr12, S1pr3, Darc, Gpr153	Inflammatory	(54)			
	WT	Lung	LPS	scRNA-seq	ECs	Icam1, Vcam1, Sele, Ccr12, Cxcr7, Gpr111	Inflammatory				
	Tie2-Cre; Lmna ^{G609G/G609G}	Lung		scRNA-seq	1	ECs	Icam1, p21 ^{Cip1/Waf1}	Aging	(55)		
	Young WT	Aorta		scRNA-seq	ECs	Atf3, Fox, Jun, Egr1, Klf4, Klf2	Regenerative	(56)			
	Female WT	Descending aorta		scRNA-seq	3	EC1	CD34, Pecam1, Jchain, Rgs5, Egfl7, Sox17, Cd36, Fabp4, Cldn5	Mature	(57)		
						EC2	CD34, Pecam1, Pdgfra, Il33, Serpinf1, Lum, Mfap5, Smoc2, Dcn, Lum, Gsn	Mesenchymal			
						EC3	CD34, Pecam1, H2-Ab1, Hmgb2, H2-Eb1, H2-Aa, Il1b, Aif1	Terminal differentiation, inflammatory			
WT	E11.5 AGM		scRNA-seq	2	AECs VECs	VEGFA, FZD4, FZD7, FZD10, Dll4, NOTCH1	Protective	(58)			
WT	E14.5 endocardium and coronary endothelium		scRNA-seq	2	Fabp4 ⁺	Pecam, Cdh5, Fabp4, Nfatc1					
					Npr3 ⁺	Pecam, Cdh5, Nfatc1, Npr3	Endocardium specific	(59)			
	ApjCreER, Rosa ^{mTmG}	E12.5 GFP ⁺	Tamoxifen	scRNA-seq	SVc	Slc45a4, Dll4, EFNB2, Cx40, Mecom, Igfbp3	Arterialization	(60)			
Macaca fascicularis	Aging	Aorta and coronary arteries		scRNA-seq	ECs	Colec10, Zbtb16, Tcf3, Myc, Thbs4, Pik3r1, Sorbs1, Txnip	Aging	(61)			
Homo sapiens	Male and female	ATAA aorta, healthy aorta	scRNA-seq	2	EC1	Vwf, Pecam1, Pecam17, Ifi27, Emp1	High cell-cell junction	(28)			
					EC2	Vwf, Pecam1, Pecam17, Ifi27, Slc9e3r2	Higher cell-cell junction				
					AECs	Gja5, Gja4, Hey2, Cxcr4	ECM, vascular development				
		CS13 AGM		scRNA-seq	3	ECs	Aplnr, Nrp2, Nt5e	Classical	(62)		
				scRNA-seq	HECs	Runx1, Snhg16, Rpsap58, Ldhd	Hematopoietic				

(Continued)

TABLE 2 | Continued

Species	Gender and genotype	Tissue	Exposure	Method	ECs subtypes			References
					Number of Name clusters	Gene expression	Function	
		Pulmonary artery		Comparative single-cell transcriptomics	ECs	Unique P2 receptor Ca ²⁺ signaling body features	Pulmonary hypertension	(63)
	Male and female	IPAH lung, normal lung		scRNA-seq	2 ECs	Vwf, Pecam	Classical	(27)
					Lymphatic ECs	Vwf, Pecam, Cav1	Lymphatic	

A summary of recent reports identified subtypes and functional characteristics of endothelial cells in vasculature. E11.5, embryonic stage 11.5; AGM, aorta-gonad-middle kidney; CS, carnegie stage; ECs, endothelial cells; AECs, arterial endothelial cells; VECs, venous endothelial cells; HECs, hematopoietic endothelial cells; WT, wild type; WD, Western diet; CHD, chow diet; HFD, high-fat diet; ATAA, ascending thoracic aortic aneurysm; IPAH, idiopathic pulmonary artery hypertension.

Endothelial Cells in Coronary Artery Development

Further understanding of the fate transition mechanism of ECs through single-cell transcriptomics combined with lineage tracing technology provides potential therapeutic applications. Zhang et al. (59) resolved the controversial issue of whether the coronary endothelial cell (EC) originated from the ventricular endocardium or the sinus vein. They identified a new type of endocardial gene, natriuretic peptide receptor 3 (Npr3), which was specifically expressed in the endocardium. Resolving this controversy is crucial for understanding the molecular mechanism of coronary artery development.

Cardiac sinus vein ECs undergo a gradual transformation from vein endothelial cells (VECs) to arterial endothelial cells (AECs), which form pre-arterial cells and finally develop into coronary arteries. Previously, it was believed that the development of coronary artery was only related to the aortic trunk, which could provide embryonic blood flow (64). However, scRNA-seq provides a unique insight into the phenotypic transformation of VECs to pre-arterial cells before coronary artery perfusion and determines transcription factors COUP-tf2 as the inhibitor (60), future experiments should examine whether this high-resolution understanding of coronary artery differentiation during cardiac angiogenesis could promote the development of regenerative therapy.

Besides, study of AEC's fate transitions and inhibitory signals may also improve understanding of coronary development and promote regenerative medicine. The efficient induction of functional AECs is one of the challenges of regenerative therapy. scRNA-seq identifies molecular pathways that increase the efficiency of generating functional AECs from human pluripotent stem cells, helping to develop a five-factor induction therapy (Fgf2, VEGFA, SB431542, RESV, and L690) to promote AEC differentiation (58), the AECs are able to significantly enhance survival rates in a mouse myocardial infarction model, but the mechanism underlying this improvement is unclear.

Endothelial Cells in Aorta and Lung

The unbiased transcriptional analysis shows that ECs are divided into three subpopulations: EC 1 specifically expresses classical EC markers Vcam1; EC 2 specifically expresses lipid-handling genes including Fabp4 and the angiogenesis marker Flt1; and EC 3 expresses markers of lymphatic identity including Lyve1 (14), revealing specific functions in extracellular matrix production, lipid processing, and angiogenesis or lymphatic function. Compared with normal mice, ECs in diseased mice show significant changes in the expression of functionally relevant genes. For instance, during atherosclerosis, chemokine activity, CCR receptor activity and arachidonic acid-binding capacity of adventitial ECs are upregulated²⁵, two EC subpopulations in septic mouse lung endothelial cells upregulate inflammatory activation markers Icam1, Vcam1, Sele, and some GPCRs (54). Endothelial to mesenchymal transition (EndMT) in atherosclerosis is associated with upregulation of smooth muscle cell markers in ECs (14, 65), corroborating the EC's low expression of Myh11 found by Kaur et al. (54), suggesting that EndMT is the result of contractile transcriptional upregulation in all EC subpopulations.

ECs displayed the most differentially expressed genes between idiopathic pulmonary artery hypertension (IPAH) and normal lungs (27), comparative single-cell transcriptomics of human ECs from 11 different tissues, and organs reveals the unique P2 receptor Ca²⁺ signaling body signature of human pulmonary artery endothelial cells, which is susceptible to genetic perturbations that affect vascular integrity, inflammatory and thrombotic responses, as well as survival and DNA repair, leading to pulmonary hypertension (63). In idiopathic pulmonary fibrosis (IPF), GDF15 is identified as a novel cell-specific marker of epithelial injury and a novel biomarker of IPF severity (66). GDF15 levels have also been associated with cellular senescence, it is necessary to conduct more studies on the larger cohort to comprehensively assess the relationship between aging and GDF15 expression. The contribution of GDF15 to age-related phenotypes and how to distinguish cellular senescence from cellular stress is unclear.

SUBTYPES OF SMOOTH MUSCLE CELLS IN VASCULATURE

Vascular smooth muscle cells (VSMCs) are located in the vessel wall. As the largest vascular cell population (14), VSMCs provide mechanical support to vessels and regulate vascular tension to control blood flow and blood pressure. In the past 30 years, the plasticity of VSMCs has been extensively studied *in vitro* (67, 68). From these studies, the concept of phenotypic switching of VSMCs has been proposed—the switching between differentiated, contracted phenotype and dedifferentiated, secreted phenotype. The former expresses typical contractile proteins α SMA, MYH11, SM22 α , and CNN1. When stimulated by injury or inflammation, VSMCs downregulate the expression of contractile genes, increase extracellular matrix (ECM) synthesis, and enhance secretion, migration, and proliferation (69), a motility-associated VTN^{high} VSMCs has been identified as an intermediate switching type (15). Loss of VSMC characteristic is a key factor in vascular diseases such as atherosclerosis, aortic aneurysm, pulmonary hypertension, and restenosis (70). Thus, searching for factors critical for VSMC gene expression may eventually lead to effective therapies. More and more studies have demonstrated that VSMCs are highly heterogeneous. A summary of recent reports identifying subtypes and functional characteristics of VSMCs in vasculature are presented in **Table 3**.

Smooth Muscle Cells in Atherosclerosis

VSMCs of healthy mice can be divided into seven subpopulations, including one subpopulation expressing rare Sca1. This subpopulation is upregulated in genes related to ECM synthesis (Mgp, Col8a1, and Spp1), migration (Pak3, Igf1, and Igfbp5), and growth factors activation, with downregulation of contractile phenotype, which is assumed to be MSC (77). However, SMC fate mapping and scRNA-seq of both mouse and human atherosclerotic plaques reveal SMC-derived intermediate cells, termed “SEM” cells, are more complex and could differentiate into macrophage-like and fibrochondrocyte-like cells (73), the modulated SMC, “fibromyocytes” identified by Wirka et al. (72) contain both the SEM cell and fibrochondrocyte-like cells, suggesting that SEM cells are not simply MSC like, but a unique transition state from SMC in atherosclerosis.

In contrast to stable coronary atherosclerotic plaques, unstable plaques are characterized by the presence of numerous necrotic lipid nuclei and microscopic fibrous caps that are highly susceptible to rupture. VSMCs are involved in the formation of the fibrous cap and the underlying necrotic core through phenotypic transformation (78). VSMC subpopulations in the aortic root of SMC-specific aryl hydrocarbon receptor (AHR)-knockout mice were divided into six subpopulations, including two FMC subpopulations. The AHR was predominantly expressed in the FMCs, which was linked to a molecular pathway downstream of Tcf21 (72). SMC-specific knockout mice with AHR had significantly larger plaque lesions and a shift from FMCs to a chondrogenic SMCs (79); however, the existence of AHR-specific SMCs in human plaque and the exact mechanisms by which regulate SMC transition is still being defined.

Aberrant epigenetic changes may be caused by changes in the activity of enzymes that promote the binding or dissociation of genes to covalent groups, alter the epigenome, and then regulate gene expression. Identification of new individual epigenetic modifications at the single-cell level creates conditions for disease prediction, diagnosis, and prognosis, as well as the development of new therapeutic strategies. Schiano et al. (76) identified the H2A.Z gene from human carotid plaque VSMCs, which was significantly enhanced in the ACTA2^{High} subpopulation, suggesting a relationship between H2A.Z gene expression and VSMCs phenotype. The VSMCs of H2AFZ^{High} were contractile and those of H2AFZ^{Low} were secretory, indicating that H2A.Z plays an essential role in maintaining the VSMCs phenotype.

Smooth Muscle Cells in Aortic Aneurysm

Dynamic SMC phenotype modulation promotes extracellular matrix substrate modulation in aortic aneurysm (23). Two VSMC subpopulations in the aorta overexpress interferon gene-stimulating factor (STING) in aneurysm. STING is involved in the induction of multiple stress responses in VSMCs, including oxidative stress responses, DNA damage responses, inflammatory responses, and activation of cell death pathways that promote aortic degeneration and cause aneurysm (74). Comparison with atherosclerotic aortic data reveals similar patterns of SMC modulation but identifies an Marfan syndrome (MFS)-specific gene signature in the modulated SMCs. Collectively, scRNA-seq implicates TGF- β signaling as potential upstream drivers of SMC modulation (75). TGF- β pathway is closely related to the pathogenesis of aneurysm in elderly patients with atherosclerosis. After knockdown of Tgfb2 in the aortic VSMCs of atherosclerotic mice, a subpopulation of VSMCs is transformed into mesenchymal stem cell-like cells, associated with the formation of osteoblasts (aggrecan), chondrocytes (osteopontin), adipocytes (adiponectin), and macrophages (CD68) at the site of aneurysm lesions (80).

VSMCs within and between different vascular regions are heterogeneous in morphology, growth characteristics and specific gene expression (71), thus the curved structure of the arch is disease susceptible. The identity of VSMCs is controlled by a highly coordinated regulatory network, in which environmental cues, signaling transduction kinases, transcription factors, and chromatin states coordinate to determine VSMC-specific gene expression program (69, 76, 81). Validation of factors as revealed by scRNA-Seq may help us complement the network of VSMC identity regulation, with the ultimate goal of providing a therapeutic strategy to manipulate VSMC fates in development and diseases.

Smooth Muscle Cells in Pulmonary Hypertension

It is well-established that VSMCs play a vital role in the initiation and progression of pulmonary hypertension by modulating the contractility and proliferation of SMCs to remodel the pulmonary vasculature. By using single-cell transcriptomics, smooth muscle cells were found to express genes implicated in the regulation of cellular apoptosis and extracellular matrix organization in the

TABLE 3 | Recent reports identified subtypes and functional characteristics of smooth muscle cells in vasculature.

Species	Gender and genotype	Tissue	Exposure	Method	SMCs subtypes				References
					Number of clusters	Name	Gene expression	Function	
Mus musculus	Female WT	Aorta	CHD	scRNA-seq	1	VSMCs	Myh11, Tpm2, Myl9, Tagln, Acta2	Classic	(14)
	Male WT	Aorta		scRNA-seq	7	Sca1 ⁺	Mgp, Col8a1, Spp1, Pak3, Igf1, Igfbp5, Sca1	Stimulated	(71)
	Male ApoE ^{-/-} -Myh11CreER ^{T2} ; Confetti ^{f/f}	Aorta	Tamoxifen + WD 14~18 weeks	scRNA-seq	9	Ly6a/Sca1 ⁺	Myh11 ^{low} , sca1, Acta2 ^{low} , Tagln ^{low} , Cnn1 ^{low} , Mgp, Col8a1, Spp1, Pak3, Igf1, Igfbp5, PI3K, GTPases, Tgf-beta	Stimulated	(72)
						Ly6a/Sca1 ⁻	Myh11 ^{low} , Acta2 ^{low} , Tagln ^{low} , Cnn1 ^{low} , Sox9, Ibsp, Chad	Calcified	
	Male ApoE ^{-/-} -Tg ^{Myh11-CreERT2} ROSA ^{tdT/+}	Aortic root and ascending aorta	Tamoxifen + HFD 0/8/16 weeks	scRNA-seq	3	Modulated VSMCs	Tagln ^{low} , Cnn1 ^{low} , Lgals3 ^{low} , Fn1, Tnfrsf11b, Col1a1, Lum, Dcn, Bgn, Tcf21	Fibrogenic	(72)
						Contracted VSMCs	2 subtypes, Tagln ^{high} , Cnn1 ^{high} , Lgals3 ^{high}		
	Male ROSA26 ^{ZsGreen1/+} ; Ldlr ^{-/-} ; Myh11-CreER ^{T2}	Aorta	Tamoxifen + WD 0/8/16/26 weeks	scRNA-seq	6	SMC	Acta2, Myh11	Contractile	(73)
SEM						Ly6a, Vcam1, Ly6c1, Lgals3	MSC-like		
FC Macrophage-like1/2/3						Fn1, Col1a1, Col1a2, Col3a1	Extracellular matrix		
Male and female WT	Ascending aorta	Ang II 1 weeks	scRNA-seq	6	Sting ^{hi}	2 subtypes, Acta2, Myh11, Mylk, Casp9, Htra2, Tnfsf15, Mkl, Stat1, Zbp1, Gsdmd, Mmp13, Cxcl13, Cxcr3, Cxcr2	Degraded	(74)	
Male 10-week-old C57BL/6J	Infrarenal abdominal aorta	Elastase-induced AAA 7/14/28 days	scRNA-seq	4	SMC_1	Myh11, Acta2, Tagln, Myl9	Quiescent, contractile	(22)	
					SMC_2	Myh11, Acta2, Tagln, Myl9, Fos, Jun, Klf2, Atf3	Proliferative, contractile		
					SMC_3	Myh11, Acta2, Tagln, Ifrd1, Dusp1, Mt1, Mt2	Dedifferentiated		
					SMC_4	Myh11, Acta2, Tagln, Ifrd1, Nrip2, Klf4, Notch3, Cd68	Inflammatory like		

(Continued)

TABLE 3 | Continued

Species	Gender and genotype	Tissue	Exposure	Method	SMCs subtypes				References
					Number of clusters	Name	Gene expression	Function	
	Male 12-week-old C57BL/6J	Infrarenal abdominal aorta	CaCl ₂ -induced AAA	scRNA-seq	2	SMC-1	Myh11, Acta2, Tagln	Contractile	(23)
	Male and female Fbn1 ^{C1041G/+}	Aortic root/ascending aorta	4 weeks/24 weeks	scRNA-seq	2	SMC-2 SMCs	Acta2, Aqp1 Acta2, Myl9, Myh11, Tpm2	Synthetic	(75)
						Modulated VSMCs	Acta2, Myl9, Myh11, Tpm2, Fn1, Mgp, Nupr1, Eln, Mmp2, Tnfrsf11b, Tgfb1	Fibrogenic	
Homo sapiens	Male	Marfan syndrome	25 years	scRNA-seq	2	Modulated VSMCs	Col1a1, Ctgf, Serpine1, Tgfb1	Fibrogenic	(75)
	Male and female	Carotid plaque			2	H2AFZ ^{High} H2AFZ ^{Low}	Cald1, Acta2, Mylk, Aebp1 Smarca4	Contracted Secretory	(76)
		ATAA aorta, healthy aorta		scRNA-seq	8	Stressed SMC	Actc1, Myl9, Acta2, Fos, Atf3, Jun, Hspb8	Stress response	(28)
						Contractile SMC	Actc1, Myl9, Acta2	Contraction related	
						Proliferating SMC1	Gas6, Igfbp2, Mgp, Fth1, Myh10	Higher proliferation	
						Proliferating SMC2	Cald1, Myh11, Map1b, Sparc, Fgf1	Higher proliferation	
						Fibromyocytes	Acta2, Myl9, Col1a2, Col8a1	Cell-ECM junction	
						Inflammatory1	Cxcr4, Btg1, Acap1, Dusp2, Ccl4, Rel, Srgn	T lymphocyte like	
						Inflammatory2	C1qa, C1qb, Cd74, Fcer1g, Aif1, Maf	Macrophage like	
						Inflammatory3	Ifit1, Isg15, Ifi6	Interferon induced	

A summary of recent reports identified subtypes and functional characteristics of VSMCs in vasculature. WT, wild type; WD, Western diet; CHD, chow diet; HFD, high-fat diet; SEM, SMC-derived intermediate; FC, fibrochondrocyte-like cells; MSC, mesenchymal stem cells; ATAA, ascending thoracic aortic aneurysm.

patients of pulmonary hypertension (27), suggesting that these cells converted to a profibrotic phenotype.

DISCUSSION

In this review, we described not only macrophage but also other immune cell and mesenchymal cell subsets in three major cardiovascular diseases: atherosclerosis, aortic aneurysm, and pulmonary hypertension. Furthermore, we summarized these types of cells' subset-specific markers and functions as shown in **Tables 1–3** and **Supplementary Table 1**. Through these literatures, we found that single-cell transcriptomics is not a technology, but a concept/insight/dimension. Just like the concept of “atom,” it provides a new perspective for us to rethink the basic composition of subjects. Profiling the complete vascular milieu using single-cell transcriptomics provides key insights for disease pathogenesis.

One of the challenges in single-cell experiments is the preparation of high-quality single-cell suspension for downstream analysis. To isolate high-quality cell suspension from vascular tissues, an enzyme cocktail is better than a single enzyme, for example, the combination of collagenase type II, collagenase type XI, soybean trypsin inhibitor, elastase lyophilized, hyaluronidase type I, and HEPES (28). Besides, tissue dissociation should be examined frequently under a microscope to evaluate the dissociation efficiency. Moreover, a well-designed single-cell experiment is sufficiently powered to obtain high-quality data. Different from ordinary bulk RNA seq, each cell is unique and the sample is not easy to obtain. Therefore, it is necessary to determine the optimal number of repeats. Generally speaking, the negative control or normal group needs at least two biological repeats, and the experimental group may need more than two repeats.

By simultaneously analyzing the transcriptional signature of major vascular cell types, we partition the relative contribution of the four vascular cell types to cardiovascular diseases (macrophages, monocytes, endothelial cells, and smooth muscle cells). The classification and proportion of cell subpopulations in vasculature vary with species, location, genotype, and disease, exhibiting unique gene expression characteristics in organ development, disease progression, and regression. Specific gene markers are expected to be the diagnostic criteria, therapeutic targets, or prognostic indicators of diseases. Therefore, treatment of vascular disease still has lots of potential to develop.

Clinical Significance

In detection and diagnosis, the emergence of single-cell transcriptomics has brought us many new opportunities, especially *in vitro* diagnosis. The rise of *in vitro* diagnosis is mainly due to cancer and rare diseases, for which the diagnosis is complex. If the diagnosis is unclear, we cannot develop a stable treatment plan, as one scholar said: “you can't stop it if you can't see it.” Based on single-cell transcriptomics, we can map the development track of human embryos; Tang (82–84) did a lot of meaningful work in this area, depicting the picture of embryo development. The diagnostic significance of single-cell level is undoubtedly huge for cancer and rare diseases (85–87), because

they have heterogeneity, and single-cell transcriptomics is a powerful weapon to reveal heterogeneity. This is an important supplement to the previously accumulated bulk data; after a period of time, bulk data will become a supplement to single-cell data.

In clinical practice, diagnosis is not enough; the next stage is the prevention and treatment of diseases. Prevention refers to the development of vaccines, and treatment refers to the development of drugs. One of the main challenges of healthcare is that patients respond differently to a treatment. At present, about 90% of the drugs on the market are ineffective for more than 50% of patients (88). More and more patient-specific cell heterogeneity is considered to be the underlying cause and driving force of differences in drug response between individuals. With the development of single-cell transcriptomics, drug development will be greatly carried out.

Although the logic of drugs and vaccines is different, they are inextricably linked in immunology. The role of single-cell immune repertoire in immunotherapy is obvious. High-throughput single-cell RNA and VDJ sequencing were used to rapidly identify neutralizing monoclonal antibodies (mAbs) against neocoronavirus from antigen-enriched B cells of convalescent patients (89), which can undoubtedly provide support for the development of monoclonal antibody drugs.

By summarizing the previous single-cell transcriptomics studies, it can be seen that the cytological mechanism of vascular diseases is quite complicated. Each cell subpopulation participates in the occurrence and development of vascular diseases. The explosion of single-cell transcriptomics provides an efficient solution to identify these heterogeneous subpopulations and establish the spatiotemporal dynamic model of vascular biology and pathological cell composition (**Figure 1**). Specific cell subtype markers are expected to become diagnostic criteria, therapeutic targets, or prognostic indicators.

LIMITATIONS AND FUTURE PROSPECTS

Single-cell transcriptomics enables people to truly analyze the entire influence pathway from genes to individual traits from the cellular level in the research of vascular development and vascular diseases, allowing people to better understand how genes affect the entire process of individual traits by affecting the phenotype of cell subpopulations. This is of great significance for precision medicine in vascular medicine. However, with most current sequencing technologies, only one dimension of information can be obtained from a batch of cells and other histological data will be lost. It is necessary to obtain multiple histological information for a single cell, which means that we can establish links between different histological data to better characterize cell function and its internal regulatory processes. Combining several of these dimensions of data into an integrated multi-omics analysis of the same single cell will generate unprecedented knowledge in the field of vascular medicine.

Fresh cell suspensions are required for single-cell sequencing onboarding, so information about the spatial location of cells is destroyed. However, the spatial location of cells plays an

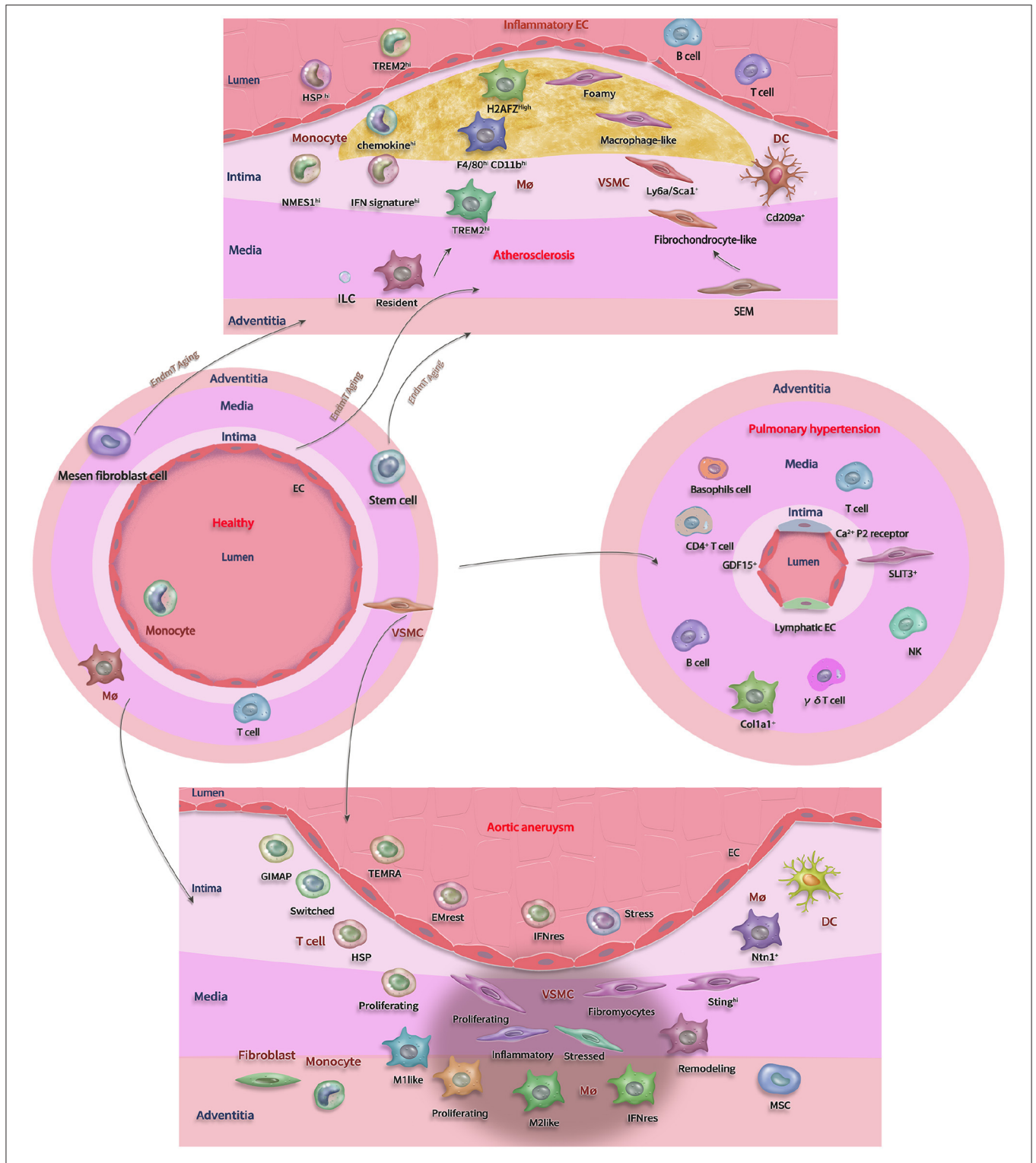


FIGURE 1 | A schematic overview of vascular cell types and their heterogeneous subtypes. The different layers of the vasculature (adventitia, media, and intima) and the different condition (healthy, atherosclerosis, aortic aneurysm, and pulmonary hypertension) with involved cell types. The graphical overview shows heterogeneity (indicated by same cell types in distinct colors) and transition (indicated by single line, black arrows, and different cell types) of all these subpopulations and their capability to adjust their phenotype to the diseased environment. Mono, Monocytes; EC, Endothelial cell; ILC, Innate lymphoid cell; Mø, Macrophage; SMC, Smooth muscle cell; SEM, SMC-derived intermediate; VSMC, Vascular smooth muscle cell; DC, dendritic cell; Mesen, Mesenchymal.

important role in the development of disease. To this end, spatial transcriptome technology has been developed, a novel technological breakthrough that reveals the genetic activity in tissues and simultaneously demonstrates the precise regional location of these active signals. The combination of spatial transcriptome and single-cell sequencing technologies has the potential to change our conceptual understanding of vascular biology and disease states and has far-reaching implications for revealing new vascular disease mechanisms and cell type-specific pathways. Further studies of functional heterogeneity and intercellular interactions in human vascular tissues may elucidate disease-related pathophysiological processes and provide a basis for identifying new pathways for vascular disease regulation and developing new therapeutic strategies for early prevention and even reversal of vascular diseases.

AUTHOR CONTRIBUTIONS

MF reviewed recent published paper and drafted the manuscript. JS contributed to conception and critically revised manuscript.

REFERENCES

- Owens GK, Kumar MS, Wamhoff BR. Molecular regulation of vascular smooth muscle cell differentiation in development and disease. *Physiol Rev.* (2004) 84:767–801. doi: 10.1152/physrev.00041.2003
- Aird WC. Endothelial cell heterogeneity. *Cold Spring Harb Perspect Med.* (2012) 2:a006429. doi: 10.1101/cshperspect.a006429
- Raffort J, Lareyre F, Clément M, Hassen-Khodja R, Chinetti G, Mallat Z. Monocytes and macrophages in abdominal aortic aneurysm. *Nat Rev Cardiol.* (2017) 14:457–71. doi: 10.1038/nrcardio.2017.52
- McLaughlin VV, Shah SJ, Souza R, Humbert M. Management of pulmonary arterial hypertension. *J Am Coll Cardiol.* (2015) 65:1976–97. doi: 10.1016/j.jacc.2015.03.540
- Benjamin EJ, Muntner P, Alonso A, Bittencourt MS, Callaway CW, Carson AP, et al. Heart disease and stroke statistics-2019 update: a report from the American Heart Association. *Circulation.* (2019) 139:e56–528. doi: 10.1161/CIR.0000000000000659
- Herrington W, Lacey B, Sherliker P, Armitage J, Lewington S. Epidemiology of atherosclerosis and the potential to reduce the global burden of atherothrombotic disease. *Circ Res.* (2016) 118:535–46. doi: 10.1161/CIRCRESAHA.115.307611
- Benjamin EJ, Virani SS, Callaway CW, Chamberlain AM, Chang AR, Cheng S, et al. Heart disease and stroke statistics-2018 update: a report from the American Heart Association. *Circulation.* (2018) 137:e67–492. doi: 10.1161/CIR.0000000000000573
- Tonelli AR, Arelli V, Minai OA, Newman J, Bair N, Heresi GA, et al. Causes and circumstances of death in pulmonary arterial hypertension. *Am J Respir Crit Care Med.* (2013) 188:365–9. doi: 10.1164/rccm.201209-1640OC
- Tang F, Barbacioru C, Wang Y, Nordman E, Lee C, Xu N, et al. mRNA-Seq whole-transcriptome analysis of a single cell. *Nat Methods.* (2009) 6:377–82. doi: 10.1038/nmeth.1315
- Habib N, Avraham-Davidi I, Basu A, Burks T, Shekhar K, Hofree M, et al. Massively parallel single-nucleus RNA-seq with DroNc-seq. *Nat Methods.* (2017) 14:955–8. doi: 10.1038/nmeth.4407
- Ijsselstein ME, van der Breggen R, Farina Sarasqueta A, Koning F, de Miranda N. A 40-Marker panel for high dimensional characterization of cancer immune microenvironments by imaging mass cytometry. *Front Immunol.* (2019) 10:2534. doi: 10.3389/fimmu.2019.02534
- Wolf D, Ley K. Immunity and inflammation in atherosclerosis. *Circ Res.* (2019) 124:315–27. doi: 10.1161/CIRCRESAHA.118.313591

FUNDING

This work was funded by grants from the National Natural Science Foundation of China (82000225), the Beijing Nova Program (Grant No. Z20110006820003), the R&D Program of Beijing Municipal Education commission (Grant No. KJZD20191002301), and the Fundamental Research Funds for the Central Universities, Innovation Fund for Medical Sciences (Grant No. 2016-I2M-1-015).

ACKNOWLEDGMENTS

We thank Xiao Chen, the staff, and the graduate students of Fuwai Hospital who give us valuable advice for this project.

SUPPLEMENTARY MATERIAL

The Supplementary Material for this article can be found online at: <https://www.frontiersin.org/articles/10.3389/fcvm.2021.643519/full#supplementary-material>

- Winkels H, Ehinger E, Vassallo M, Buscher K, Dinh HQ, Kobiyama K, et al. Atlas of the immune cell repertoire in mouse atherosclerosis defined by Single-Cell RNA-Sequencing and mass cytometry. *Circ Res.* (2018) 122:1675–88. doi: 10.1161/CIRCRESAHA.117.312513
- Kalluri AS, Vellarikkal SK, Edelman ER, Nguyen L, Subramanian A, Ellinor PT, et al. Single-Cell analysis of the normal mouse aorta reveals functionally distinct endothelial cell populations. *Circulation.* (2019) 140:147–63. doi: 10.1161/CIRCULATIONAHA.118.038362
- He D, Mao A, Zheng C-B, Kan H, Zhang K, Zhang Z, et al. Aortic heterogeneity across segments and under high fat/salt/glucose conditions at the single-cell level. *Int Sci Rev Ser.* (2020) 7:881–96. doi: 10.1093/nsr/nwaa038
- Kim K, Shim D, Lee JS, Zaitsev K, Williams JW, Kim KW, et al. Transcriptome analysis reveals nonfoamy rather than foamy plaque macrophages are proinflammatory in atherosclerotic murine models. *Circ Res.* (2018) 123:1127–42. doi: 10.1161/CIRCRESAHA.118.312804
- Gu W, Ni Z, Tan YQ, Deng J, Zhang SJ, Lv ZC, et al. Adventitial cell atlas of wt (Wild Type) and ApoE (Apolipoprotein E)-deficient mice defined by single-cell RNA sequencing. *Arterioscler Thromb Vasc Biol.* (2019) 39:1055–71. doi: 10.1161/ATVBAHA.119.312399
- Cochain C, Vafadarnejad E, Arampatzis P, Pelisek J, Winkels H, Ley K, et al. Single-Cell RNA-Seq reveals the transcriptional landscape and heterogeneity of aortic macrophages in murine atherosclerosis. *Circ Res.* (2018) 122:1661–74. doi: 10.1161/CIRCRESAHA.117.312509
- Hadi T, Boytard L, Silvestro M, Alebrahim D, Jacob S, Feinstein J, et al. Macrophage-derived netrin-1 promotes abdominal aortic aneurysm formation by activating MMP3 in vascular smooth muscle cells. *Nat Commun.* (2018) 9:5022. doi: 10.1038/s41467-018-07495-1
- Cole JE, Park I, Ahern DJ, Kassiteridi C, Danso Abeam D, Goddard ME, et al. Immune cell census in murine atherosclerosis: cytometry by time of flight illuminates vascular myeloid cell diversity. *Cardiovasc Res.* (2018) 114:1360–71. doi: 10.1093/cvr/cvy109
- Weinberger T, Esfandyari D, Messerer D, Percin G, Schleifer C, Thaler R, et al. Ontogeny of arterial macrophages defines their functions in homeostasis and inflammation. *Nat Commun.* (2020) 11:4549. doi: 10.1038/s41467-020-18287-x
- Zhao G, Lu H, Chang Z, Zhao Y, Zhu T, Chang L, et al. Single cell RNA sequencing reveals the cellular heterogeneity of aneurysmal infrarenal abdominal aorta. *Cardiovasc Res.* (2020) 117:1402–16. doi: 10.1093/cvr/cvaa214
- Yang H, Zhou T, Stranz A, DeRoo E, Liu B. Single-Cell RNA sequencing reveals heterogeneity of vascular cells in early stage murine abdominal

- aortic aneurysm—brief report. *Arterioscler Thromb Vasc Biol.* (2021) 41:1158–66. doi: 10.1161/ATVBAHA.120.315607
24. Roberts ME, Barvalia M, Silva J, Cederberg RA, Chu W, Wong A, et al. Deep phenotyping by mass cytometry and single-cell RNA-sequencing reveals LYN-regulated signaling profiles underlying monocyte subset heterogeneity and lifespan. *Circ Res.* (2020) 126:e61–79. doi: 10.1161/CIRCRESAHA.119.315708
 25. Fernandez DM, Rahman AH, Fernandez NF, Chudnovskiy A, Amir ED, Amadori L, et al. Single-cell immune landscape of human atherosclerotic plaques. *Nat Med.* (2019) 25:1576–88. doi: 10.1038/s41591-019-0590-4
 26. Marsh LM, Jandl K, Grünig G, Foris V, Bashir M, Ghanim B, et al. The inflammatory cell landscape in the lungs of patients with idiopathic pulmonary arterial hypertension. *Eur Respir J.* (2018) 51:1701214. doi: 10.1183/13993003.01214-2017
 27. Saygin D, Tabib T, Bittar HET, Valenzi E, Sembrat J, Chan SY, et al. Transcriptional profiling of lung cell populations in idiopathic pulmonary arterial hypertension. *Pulm Circ.* (2020) 10:1–15. doi: 10.1177/2045894020908782
 28. Li Y, Ren P, Dawson A, Vasquez HG, Ageedi W, Zhang C, et al. Single-Cell transcriptome analysis reveals dynamic cell populations and differential gene expression patterns in control and aneurysmal human aortic tissue. *Circulation.* (2020) 142:1374–88. doi: 10.1161/CIRCULATIONAHA.120.046528
 29. Fay NS, Larson EC, Jameson JM. Chronic Inflammation and $\gamma\delta$ T Cells. *Front Immunol.* (2016) 7:210. doi: 10.3389/fimmu.2016.00210
 30. Ginhoux F, Jung S. Monocytes and macrophages: developmental pathways and tissue homeostasis. *Nat Rev Immunol.* (2014) 14:392–404. doi: 10.1038/nri3671
 31. Jenkins SJ, Hume DA. Homeostasis in the mononuclear phagocyte system. *Trends Immunol.* (2014) 35:558–67. doi: 10.1016/j.it.2014.06.006
 32. Colin S, Chinetti-Gbaguidi G, Staels B. Macrophage phenotypes in atherosclerosis. *Immunol Rev.* (2014) 262:153–66. doi: 10.1111/imr.12218
 33. Randolph GJ. Mechanisms that regulate macrophage burden in atherosclerosis. *Circ Res.* (2014) 114:1757–71. doi: 10.1161/CIRCRESAHA.114.301174
 34. Cochain C, Zerneck A. Macrophages in vascular inflammation and atherosclerosis. *Pflugers Arch.* (2017) 469:485–99. doi: 10.1007/s00424-017-1941-y
 35. Weber C, Noels H. Atherosclerosis: current pathogenesis and therapeutic options. *Nat Med.* (2011) 17:1410–22. doi: 10.1038/nm.2538
 36. Lin JD, Nishi H, Poles J, Niu X, McCauley C, Rahman K, et al. Single-cell analysis of fate-mapped macrophages reveals heterogeneity, including stem-like properties, during atherosclerosis progression and regression. *JCI Insight.* (2019) 4:e124574. doi: 10.1172/jci.insight.124574
 37. Rahman K, Vengrenyuk Y, Ramsey SA, Vila NR, Girgis NM, Liu J, et al. Inflammatory Ly6Chi monocytes and their conversion to M2 macrophages drive atherosclerosis regression. *J Clin Invest.* (2017) 127:2904–15. doi: 10.1172/JCI75005
 38. Batra R, Suh MK, Carson JS, Dale MA, Meisinger TM, Fitzgerald M, et al. IL-1 β (Interleukin-1 β) and TNF- α (Tumor Necrosis Factor- α) impact abdominal aortic aneurysm formation by differential effects on macrophage polarization. *Arterioscler Thromb Vasc Biol.* (2018) 38:457–63. doi: 10.1161/ATVBAHA.117.310333
 39. Andreato F, Syvannarath V, Clement M, Delbosc S, Guedj K, Fornasa G, et al. Macrophage CD31 signaling in dissecting aortic aneurysm. *J Am Coll Cardiol.* (2018) 72:45–57. doi: 10.1016/j.jacc.2018.04.047
 40. Berg KE, Ljungcrantz I, Andersson L, Bryngelsson C, Hedblad B, Fredrikson GN, et al. Elevated CD14⁺⁺CD16⁻ monocytes predict cardiovascular events. *Circ Cardiovasc Genet.* (2012) 5:122–31. doi: 10.1161/CIRCGENETICS.111.960385
 41. Egawa M, Mukai K, Yoshikawa S, Iki M, Mukaida N, Kawano Y, et al. Inflammatory monocytes recruited to allergic skin acquire an anti-inflammatory M2 phenotype via basophil-derived interleukin-4. *Immunity.* (2013) 38:570–80. doi: 10.1016/j.immuni.2012.11.014
 42. Geissmann F, Manz MG, Jung S, Sieweke MH, Merad M, Ley K. Development of monocytes, macrophages, dendritic cells. *Science.* (2010) 327:656–61. doi: 10.1126/science.1178331
 43. Menezes S, Melandri D, Anselmi G, Perchet T, Loschko J, Dubrot J, et al. The Heterogeneity of Ly6C(hi) monocytes controls their differentiation into iNOS(+) macrophages or monocyte-derived dendritic cells. *Immunity.* (2016) 45:1205–18. doi: 10.1016/j.immuni.2016.12.001
 44. Mildner A, Schönheit J, Giladi A, David E, Lara-Astiaso D, Lorenzo-Vivas E, et al. Genomic characterization of murine monocytes reveals C/EBP β transcription factor dependence of Ly6C(-) cells. *Immunity.* (2017) 46:849–62.e7. doi: 10.1016/j.immuni.2017.04.018
 45. Jakubzick CV, Randolph GJ, Henson PM. Monocyte differentiation and antigen-presenting functions. *Nat Rev Immunol.* (2017) 17:349–62. doi: 10.1038/nri.2017.28
 46. Hamers AAJ, Dinh HQ, Thomas GD, Marcovecchio P, Blatchley A, Nakao CS, et al. Human monocyte heterogeneity as revealed by high-dimensional mass cytometry. *Arterioscler Thromb Vasc Biol.* (2019) 39:25–36. doi: 10.1161/ATVBAHA.118.311022
 47. Villani AC, Satija R, Reynolds G, Sarkizova S, Shekhar K, Fletcher J, et al. Single-cell RNA-seq reveals new types of human blood dendritic cells, monocytes, and progenitors. *Science.* (2017) 356:eaah4573. doi: 10.1126/science.aah4573
 48. Thomas GD, Hamers AAJ, Nakao C, Marcovecchio P, Taylor AM, McSkimming C, et al. Human blood monocyte subsets: a new gating strategy defined using cell surface markers identified by mass cytometry. *Arterioscler Thromb Vasc Biol.* (2017) 37:1548–58. doi: 10.1161/ATVBAHA.117.309145
 49. Gisterà A, Hansson GK. The immunology of atherosclerosis. *Nat Rev Nephrol.* (2017) 13:368–80. doi: 10.1038/nrneph.2017.51
 50. Klingenberg R, Gerdes N, Badeau RM, Gisterà A, Strothoff D, Ketelhuth DF, et al. Depletion of FOXP3⁺ regulatory T cells promotes hypercholesterolemia and atherosclerosis. *J Clin Invest.* (2013) 123:1323–34. doi: 10.1172/JCI63891
 51. Butcher MJ, Filipowicz AR, Waseem TC, McGary CM, Crow KJ, Magilnick N, et al. Atherosclerosis-Driven Treg plasticity results in formation of a dysfunctional subset of plastic IFN γ ⁺ Th1/Tregs. *Circ Res.* (2016) 119:1190–203. doi: 10.1161/CIRCRESAHA.116.309764
 52. Eberl G, Colonna M, Di Santo JP, McKenzie AN. Innate lymphoid cells. *Innate Lymphoid Cells N Paradigm Immuno Sci.* (2015) 348:aaa6566. doi: 10.1126/science.aaa6566
 53. Upadhye A, Srikakulapu P, Gonen A, Hendrikx S, Perry HM, Nguyen A, et al. Diversification and CXCR4-dependent establishment of the bone marrow B-1a cell pool governs atheroprotective igm production linked to human coronary atherosclerosis. *Circ Res.* (2019) 125:e55–70. doi: 10.1161/CIRCRESAHA.119.315786
 54. Kaur H, Carvalho J, Looso M, Singh P, Chennupati R, Preussner J, et al. Single-cell profiling reveals heterogeneity and functional patterning of GPCR expression in the vascular system. *Nat Commun.* (2017) 8:15700. doi: 10.1038/ncomms15700
 55. Sun S, Qin W, Tang X, Meng Y, Hu W, Zhang S, et al. Vascular endothelium-targeted Sirt7 gene therapy rejuvenates blood vessels and extends life span in a Hutchinson-Gilford progeria model. *Sci Adv.* (2020) 6:eaay5556. doi: 10.1126/sciadv.aay5556
 56. McDonald AI, Shirali AS, Aragón R, Ma F, Hernandez G, Vaughn DA, et al. Endothelial regeneration of large vessels is a biphasic process driven by local cells with distinct proliferative capacities. *Cell Stem Cell.* (2018) 23:210–25.e216. doi: 10.1016/j.stem.2018.07.011
 57. Lukowski SW, Patel J, Andersen SB, Sim SL, Wong HY, Tay J, et al. Single-Cell transcriptional profiling of aortic endothelium identifies a hierarchy from endovascular progenitors to differentiated cells. *Cell Rep.* (2019) 27:2748–58.e2743. doi: 10.1016/j.celrep.2019.04.102
 58. Zhang J, Chu LF, Hou Z, Schwartz MP, Hacker T, Vickerman V, et al. Functional characterization of human pluripotent stem cell-derived arterial endothelial cells. *Proc Natl Acad Sci USA.* (2017) 114:E6072–78. doi: 10.1073/pnas.1702295114
 59. Zhang H, Pu W, Li G, Huang X, He L, Tian X, et al. Endocardium minimally contributes to coronary endothelium in the embryonic ventricular free walls. *Circ Res.* (2016) 118:1880–93. doi: 10.1161/CIRCRESAHA.116.308749
 60. Su T, Stanley G, Sinha R, D'Amato G, Das S, Rhee S, et al. Single-cell analysis of early progenitor cells that build coronary arteries. *Nature.* (2018) 559:356–62. doi: 10.1038/s41586-018-0288-7
 61. Zhang W, Zhang S, Yan P, Ren J, Song M, Li J, et al. A single-cell transcriptomic landscape of primate arterial aging. *Nat Commun.* (2020) 11:2202. doi: 10.1038/s41467-020-15997-0

62. Zeng Y, He J, Bai Z, Li Z, Gong Y, Liu C, et al. Tracing the first hematopoietic stem cell generation in human embryo by single-cell RNA sequencing. *Cell Res.* (2019) 29:881–94. doi: 10.1038/s41422-019-0228-6
63. Hennigs JK, Lüneburg N, Stage A, Schmitz M, Körbelin J, Harbaum L, et al. The P2-receptor-mediated Ca(2+) signalosome of the human pulmonary endothelium - implications for pulmonary arterial hypertension. *Purinergic Signal.* (2019) 15:299–311. doi: 10.1007/s11302-019-09674-1
64. Sharma B, Chang A, Red-Horse K. Coronary artery development: progenitor cells and differentiation pathways. *Annu Rev Physiol.* (2017) 79:1–19. doi: 10.1146/annurev-physiol-022516-033953
65. Chen PY, Qin L, Baeyens N, Li G, Afolabi T, Budatha M, et al. Endothelial-to-mesenchymal transition drives atherosclerosis progression. *J Clin Invest.* (2015) 125:4514–28. doi: 10.1172/JCI82719
66. Zhang Y, Jiang M, Nourai M, Roth MG, Tabib T, Winters S, et al. GDF15 is an epithelial-derived biomarker of idiopathic pulmonary fibrosis. *Am J Physiol Lung Cell Mol Physiol.* (2019) 317:L510–21. doi: 10.1152/ajplung.00062.2019
67. Campbell JH, Campbell GR. Smooth muscle phenotypic modulation—a personal experience. *Arterioscler Thromb Vasc Biol.* (2012) 32:1784–89. doi: 10.1161/ATVBAHA.111.243212
68. Chamley-Campbell J, Campbell GR, Ross R. The smooth muscle cell in culture. *Physiol Rev.* (1979) 59:1–61. doi: 10.1152/physrev.1979.59.1.1
69. Alexander MR, Owens GK. Epigenetic control of smooth muscle cell differentiation and phenotypic switching in vascular development and disease. *Annu Rev Physiol.* (2012) 74:13–40. doi: 10.1146/annurev-physiol-012110-142315
70. Ten Freyhaus H, Berghausen EM, Janssen W, Leuchs M, Zierden M, Murmann K, et al. Genetic ablation of PDGF-Dependent signaling pathways abolishes vascular remodeling and experimental pulmonary hypertension. *Arterioscler Thromb Vasc Biol.* (2015) 35:1236–45. doi: 10.1161/ATVBAHA.114.304864
71. Dobnikar L, Taylor AL, Chappell J, Oldach P, Harman JL, Oerton E, et al. Disease-relevant transcriptional signatures identified in individual smooth muscle cells from healthy mouse vessels. *Nat Commun.* (2018) 9:4567. doi: 10.1038/s41467-018-07887-3
72. Wirka RC, Wagh D, Paik DT, Pjanic M, Nguyen T, Miller CL, et al. Atheroprotective roles of smooth muscle cell phenotypic modulation and the TCF21 disease gene as revealed by single-cell analysis. *Nat Med.* (2019) 25:1280–89. doi: 10.1038/s41591-019-0512-5
73. Pan H, Xue C, Auerbach BJ, Fan J, Bashore AC, Cui J, et al. Single-Cell genomics reveals a novel cell state during smooth muscle cell phenotypic switching and potential therapeutic targets for atherosclerosis in mouse and human. *Circulation.* (2020) 142:2060–75. doi: 10.1161/CIRCULATIONAHA.120.048378
74. Luo W, Wang Y, Zhang L, Ren P, Zhang C, Li Y, et al. Critical role of cytosolic DNA and its sensing adaptor STING in aortic degeneration, dissection, and rupture. *Circulation.* (2020) 141:42–66. doi: 10.1161/CIRCULATIONAHA.119.041460
75. Pedroza AJ, Tashima Y, Shad R, Cheng P, Wirka R, Churovich S, et al. Single-Cell transcriptomic profiling of vascular smooth muscle cell phenotype modulation in marfan syndrome aortic aneurysm. *Arterioscler Thromb Vasc Biol.* (2020) 40:2195–211. doi: 10.1161/ATVBAHA.120.314670
76. Yao F, Yu P, Li Y, Yuan X, Li Z, Zhang T, et al. Histone variant H2A.Z is required for the maintenance of smooth muscle cell identity as revealed by single-cell transcriptomics. *Circulation.* (2018) 138:2274–88. doi: 10.1161/CIRCULATIONAHA.117.033114
77. Isselbacher EM, Lino Cardenas CL, Lindsay ME. Hereditary influence in thoracic aortic aneurysm and dissection. *Circulation.* (2016) 133:2516–28. doi: 10.1161/CIRCULATIONAHA.116.009762
78. Shankman LS, Gomez D, Cherepanova OA, Salmon M, Alencar GF, Haskins RM, et al. KLF4-dependent phenotypic modulation of smooth muscle cells has a key role in atherosclerotic plaque pathogenesis. *Nat Med.* (2015) 21:628–37. doi: 10.1038/nm.3866
79. Kim JB, Zhao Q, Nguyen T, Pjanic M, Cheng P, Wirka R, et al. The Environment-Sensing Aryl-Hydrocarbon receptor inhibits the chondrogenic fate of modulated smooth muscle cells in atherosclerotic lesions. *Circulation.* (2020) 142:575–90. doi: 10.1101/2020.04.21.049890
80. Chen PY, Qin L, Li G, Malagon-Lopez J, Wang Z, Bergaya S, et al. Smooth muscle cell reprogramming in aortic aneurysms. *Cell Stem Cell.* (2020) 26:542–57.e511. doi: 10.1016/j.stem.2020.02.013
81. Wang Z, Wang DZ, Hockemeyer D, McAnally J, Nordheim A, Olson EN. Myocardin and ternary complex factors compete for SRF to control smooth muscle gene expression. *Nature.* (2004) 428:185–9. doi: 10.1038/nature02382
82. Yan L, Yang M, Guo H, Yang L, Wu J, Li R, et al. Single-cell RNA-Seq profiling of human preimplantation embryos and embryonic stem cells. *Nat Struct Mol Biol.* (2013) 20:1131–9. doi: 10.1038/nsmb.2660
83. Cui Y, Zheng Y, Liu X, Yan L, Fan X, Yong J, et al. Single-cell transcriptome analysis maps the developmental track of the human heart. *Cell Rep.* (2019) 26:1934–50.e1935. doi: 10.1016/j.celrep.2019.01.079
84. Zhou F, Wang R, Yuan P, Ren Y, Mao Y, Li R, et al. Reconstituting the transcriptome and DNA methylome landscapes of human implantation. *Nature.* (2019) 572:660–4. doi: 10.1038/s41586-019-1500-0
85. Giustacchini A, Thongjuea S, Barkas N, Woll PS, Povinelli BJ, Booth CAG, et al. Single-cell transcriptomics uncovers distinct molecular signatures of stem cells in chronic myeloid leukemia. *Nat Med.* (2017) 23:692–702. doi: 10.1038/nm.4336
86. Klco JM, Spencer DH, Miller CA, Griffith M, Lamprecht TL, O’Laughlin M, et al. Functional heterogeneity of genetically defined subclones in acute myeloid leukemia. *Cancer Cell.* (2014) 25:379–92. doi: 10.1016/j.ccr.2014.01.031
87. Zheng C, Zheng L, Yoo JK, Guo H, Zhang Y, Guo X, et al. Landscape of infiltrating T Cells in liver cancer revealed by Single-Cell sequencing. *Cell.* (2017) 169:1342–56.e1316. doi: 10.1016/j.cell.2017.05.035
88. What happened to personalized medicine? *Nat Biotechnol.* (2012) 30:1. doi: 10.1038/nbt.2096
89. Cao Y, Su B, Guo X, Sun W, Deng Y, Bao L, et al. Potent neutralizing antibodies against SARS-CoV-2 identified by high-throughput single-cell sequencing of convalescent patients’ B cells. *Cell.* (2020) 182:73–84.e16. doi: 10.1016/j.cell.2020.05.025

Conflict of Interest: The authors declare that the research was conducted in the absence of any commercial or financial relationships that could be construed as a potential conflict of interest.

Copyright © 2021 Fu and Song. This is an open-access article distributed under the terms of the Creative Commons Attribution License (CC BY). The use, distribution or reproduction in other forums is permitted, provided the original author(s) and the copyright owner(s) are credited and that the original publication in this journal is cited, in accordance with accepted academic practice. No use, distribution or reproduction is permitted which does not comply with these terms.