



LJMU Research Online

Giacomini, G, Herrel, A, Chaverri, G, Brown, RP, Russo, D, Scaravelli, D and Meloro, C

Functional correlates of skull shape in Chiroptera: feeding and echolocation adaptations.

<http://researchonline.ljmu.ac.uk/id/eprint/15121/>

Article

Citation (please note it is advisable to refer to the publisher's version if you intend to cite from this work)

Giacomini, G, Herrel, A, Chaverri, G, Brown, RP, Russo, D, Scaravelli, D and Meloro, C Functional correlates of skull shape in Chiroptera: feeding and echolocation adaptations. Integrated Zoology. ISSN 1749-4877 (Accepted)

LJMU has developed **LJMU Research Online** for users to access the research output of the University more effectively. Copyright © and Moral Rights for the papers on this site are retained by the individual authors and/or other copyright owners. Users may download and/or print one copy of any article(s) in LJMU Research Online to facilitate their private study or for non-commercial research. You may not engage in further distribution of the material or use it for any profit-making activities or any commercial gain.

The version presented here may differ from the published version or from the version of the record. Please see the repository URL above for details on accessing the published version and note that access may require a subscription.

For more information please contact researchonline@ljmu.ac.uk

<http://researchonline.ljmu.ac.uk/>

Functional correlates of skull shape in Chiroptera: feeding and echolocation adaptations

Running title: Bat skull shape and functional demands

Giada Giacomini¹, Anthony Herrel², Gloriana Chaverri^{3,4}, Richard P. Brown¹, Danilo Russo^{5,6}, Dino Scaravelli⁷, Carlo Meloro^{1*}

¹ Research Centre in Evolutionary Anthropology and Paleoecology, School of Biological and Environmental Sciences, Liverpool John Moores University, UK

² C.N.R.S/M.N.H.N., Département d'Ecologie et de Gestion de Paris, Paris, France.

³ Recinto de Golfito, Universidad de Costa Rica, Golfito, Costa Rica

⁴ Smithsonian Tropical Research Institute, Balboa, Ancón, República de Panamá

⁵ Wildlife Research Unit, Dipartimento di Agraria, Università degli Studi di Napoli Federico II, Via Università 100, Portici, Italy

⁶ School of Biological Sciences, Life Sciences Building, University of Bristol, Bristol, UK

⁷ *Department of Veterinary Medical Sciences, University of Bologna, Ozzano dell'Emilia, Italy*

*Correspondence: Carlo Meloro, Research Centre in Evolutionary Anthropology and Paleoecology, School of Biological and Environmental Sciences, Liverpool John Moores University, Byrom Street, Liverpool L3 3AF, UK.

Email: C.Meloro@ljmu.ac.uk

Abstract

Morphological, functional and behavioural adaptations of bats are among the most diverse within mammals. A strong association between bat skull morphology and feeding behaviour has been suggested previously. However, morphological variation related to other drivers of adaptation, in particular echolocation, remains understudied.

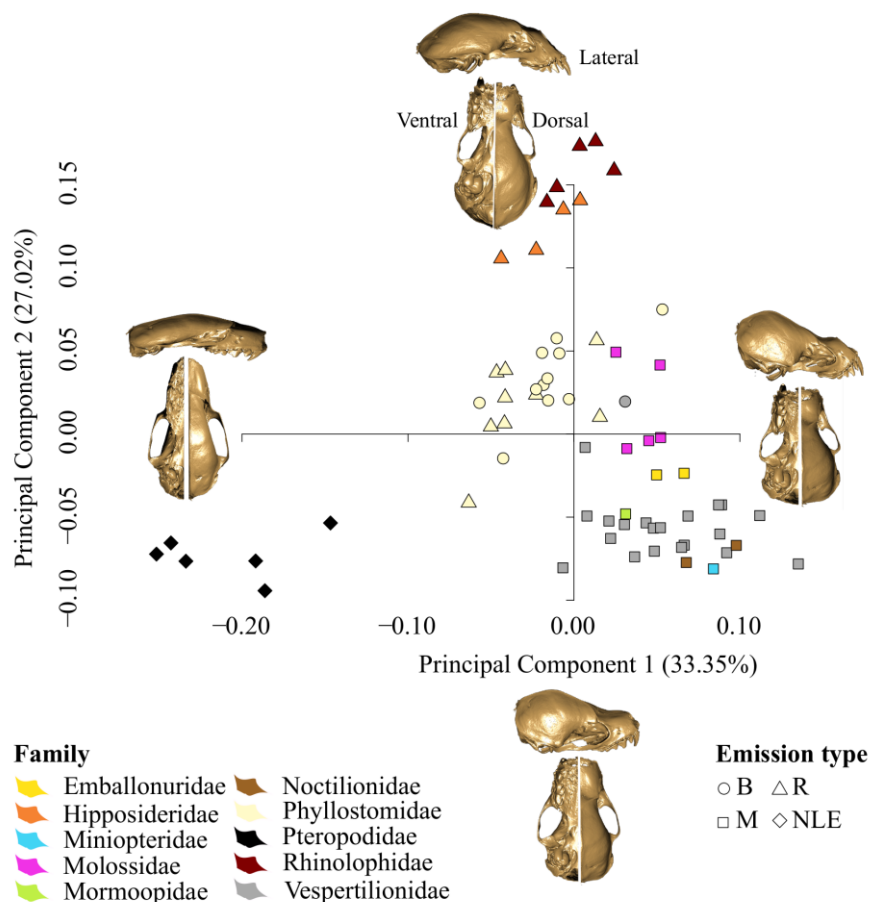
This article has been accepted for publication and undergone full peer review but has not been through the copyediting, typesetting, pagination and proofreading process, which may lead to differences between this version and the [Version of Record](#). Please cite this article as [doi: 10.1111/1749-4877.12564](https://doi.org/10.1111/1749-4877.12564).

This article is protected by copyright. All rights reserved.

We assessed variation in skull morphology with respect to ecology (diet and emission type) and function (bite force, masticatory muscles and echolocation characteristics) using geometric morphometrics and comparative methods.

Our study suggests that variation in skull shape of 10 bat families is the result of adaptations to broad dietary categories and sound emission types (oral or nasal). Skull shape correlates with echolocation parameters only in a subsample of insectivorous species, possibly because they (almost) entirely rely on this sensory system for locating and capturing prey. Insectivores emitting low frequencies are characterised by a ventrally tilted rostrum, a trait not associated with feeding parameters. This result questions the validity of a trade-off between feeding and echolocation function. Our study advances understanding of the relationship between skull morphology and specific features of echolocation and suggests that evolutionary constraints due to echolocation may differ between different groups within the Chiroptera.

We studied skull size and shape variation in 10 families of bats. Skull size correlated strongly with diet and frequency emission mode. The impact of echolocation on shape was detectable within a subset of insectivorous species questioning trade-off between feeding and echolocating.



Key words: diet, echolocation, functional morphology, geometric morphometrics, macroevolution.

Introduction

Morphological changes in the mammalian skull are driven by a variety of functional demands including feeding ecology (Janis 1990), environmental context (e.g. habitat productivity: Cardini *et al.* 2007) and broad morphological drivers (e.g. allometric rule: Cardini 2019). Flying mammals of the order Chiroptera face the additional challenge of effective echolocation, and so their skulls also have to behave as acoustic horns for efficient sound emission (Pedersen 1998).

Previous studies have documented a strong association between bat skull morphology and feeding function. In particular, diet preferences, bite force and masticatory muscles have been widely associated with skull size and shape variation in bats (e.g. Aguirre *et al.* 2002; Freeman 1998; Santana *et al.* 2012). Nevertheless, the majority of these studies have focused on one family only, the Phyllostomidae (Dumont 2007; Dumont *et al.* 2012; Hedrick *et al.* 2020, but see Hedrick & Dumont 2018; Senawi *et al.* 2015). Although this family is the most diverse in terms of diet and skull morphology (Wilson & Reeder 2005), comparisons within a broader taxonomic context are required to detect more general patterns.

Laryngeal echolocating bats use acoustic emissions not only to locate prey and navigate the environment but also to communicate (Jones & Siemers 2011). Different degrees of head rotation are associated with emission type in bats: in nasal emitters the head is folded towards the chest, while in oral emitters it rotates dorsally during ontogenesis (Pedersen 1998). Besides this well-described dichotomy between oral and nasal emitters, our understanding of the influence of echolocation adaptation on size and shape of bat skulls remains limited. Adaptations for echolocation are generally thought to be associated with soft tissue rather than bony structures (Elemans *et al.* 2011). Evidence that bat skull size is associated with echolocation parameters (in particular peak frequency, [FP]) has been detected in some bat families (Jacobs *et al.* 2014; Thiagavel *et al.* 2017), but there is still a significant gap in our understanding of how echolocation relates to morphology (particularly to skull shape) and whether or not a general pattern is present across families (but see Jacobs *et al.* 2014 for Rhinolophidae). Different selective pressures can drive related taxa towards different evolutionary optima, especially when they influence trade-offs between traits (Arbour *et al.* 2019; Dumont *et al.*, 2014). Insectivorous bats are known to rely mainly on echolocation to detect and pursue their prey, in contrast with other bats (e.g. carnivorous species) that also rely on vision and olfaction (Bahlman & Kelt 2007; Ripperger *et al.* 2019; Surlykke *et al.* 2013). Thus, we set out to test the hypothesis that insectivorous species display an association between skull shape and echolocation characteristics due to a less flexible (but more specialized) sensory system. More specifically, we used geometric morphometrics and phylogenetic comparative methods to test the following main predictions:

- i. the association between feeding descriptors (*i.e.*, diet, bite force, masticatory muscle) and skull morphology follows a general pattern within the Chiroptera. Hedrick *et al.* (2020) recently proposed the relative rostrum length as a key trait allowing Phyllostomidae to occupy the broad

range of their dietary niches. Because this trait correlates strongly with bite force in bats and other mammals (Wroe et al. 2005; Dumont 2007; Santana et al. 2010) we predict that skull shape changes generally associated with face shortening and more powerful masticatory muscles (Herrel et al. 2008) should occur in Chiroptera that are able to generate relatively high bite force.

- ii. Insectivorous bats display an association between skull morphology (both size and shape) and echolocation call parameters because they almost exclusively rely on sound emission to detect and pursue their prey. This hypothesis has been already proposed by Bogdanowicz et al. (1999) who identified that echolocation calls are dominated by low frequencies in bigger insectivores unlike smaller species which use higher frequencies (Jones 1999).
- iii. Insectivorous bats show a trade-off in skull shape between feeding and sensory function due to dual skull functions: processing hard food and optimising sound emission. Hard food processing requires a relatively short rostrum for maximising bite force (Herring 1993). This trait equally correlates with the ability to produce high frequency sounds that limit prey detection range for bats. Jacobs et al. (2014) proposed that these two functions have opposing effects on the evolution of skull shape variation. This hypothesis was validated in Rhinolophidae showing significant association between skull shape, bite force and frequency peak.

Methods

Sample

We examined 185 bat skulls, belonging to 67 species, from 10 different bat families. This is representative of 5% of the total diversity of extant Chiroptera that are currently divided into 21 families (Wilson & Reader 2005). The number of species was constrained by the need to consistently collect data on skull morphology, diet, emission type, echolocation parameters, masticatory muscle mass and bite force using the same established protocols. Masticatory muscle data were available for a subsample of just over half of the species (96 specimens, 34 species, 5 bat families) and were included in the analyses. Details on origins of specimens (museum collections) are reported in Table S1.

Functional, ecological and morphological data

Sensory (i.e., echolocation parameters) and feeding (i.e., bite force and muscles mass) data were acquired from the literature or collected in the field. Details on collection techniques and criteria for data selection are provided in the Supporting Information together with the selected literature and raw data used in this study (Table S2 and S3 for sensory and feeding parameters, respectively). All sensory and feeding estimates were \log_{10} transformed prior to the analysis.

Morphological data were collected by geometric morphometric methods (GMM) applied to 3D digital models of bat crania (landmark configuration described in Fig. 1 and Table S5). An established

photogrammetric protocol (Giacomini *et al.* 2019) and micro CT scans were employed to digitally reconstruct the models (Table S1). The combination of 3D reconstruction techniques (*i.e.*, photogrammetry and micro CT scan) has been demonstrated to provide robust biological results in macroevolutionary analyses when appropriate preliminary tests are performed on a subsample of the data (Giacomini *et al.* 2019; Shearer *et al.* 2017). Details on the GMM are reported in the Supporting Information.

To assess the relationship between morphology and ecological groups, we classified species by broad diet categories, ability for laryngeal echolocation and emission type. The full list of traits studied and parameter abbreviations used hereafter are reported in Table 1. Diet was categorized by traditional groups inferred from Wilson and Reeder (2005) and is reported in Table 1. We followed Thiagavel *et al.* (2018) to categorize species according to whether they are capable of laryngeal echolocation (LE) or not (NLE). LE bats were further categorized according to emission type, as species that use mouth emission (M), nasal emission (R), or emission from both nose and mouth (B), following references in Table S2 and additional references (Goudy-Trainor & Freeman 2002; Jakobsen *et al.* 2018; Pedersen 1998; Seibert *et al.* 2015; Surlykke *et al.* 2013).

Comparative analyses

All the analyses in this study were performed above the species level (=interspecific scale) using a phylogenetic comparative approach (PGLS: phylogenetic generalized least squares; phylogenetic Partial Least Squares, phylo-PLS). The raw data (both functional traits and skull morphological data) were averaged by species. Phylogenetic histories were represented by a series of pruned trees extracted from the calibrated and ultrametric phylogenetic tree built by Shi and Rabosky (2015), with tips corresponding to the species of our dataset (and sub datasets). The tree was used to compute the phylogenetic variance-covariance matrices employed in PGLS and phylogenetic PLS (Adams & Felice 2014; Rohlf 2006, 2007). The analyses were performed using the R packages “geomorph” (Adams & Otárola-Castillo 2013), “caper” (Orge *et al.* 2013), “mvMorph” (Clavel *et al.* 2015) and “phytools” (Revell 2012).

Size variation

Skull size was here represented by \log_{10} centroid size (defined as the square root of the squared distances from each landmark to the barycentre of the landmark configuration). This variable was used as independent in order to explore allometric variation in feeding and sensory parameters (Table 1). Phylogenetic Generalised Least Squares was applied to account for phylogenetic non-independence of interspecific data. We employed the method proposed by Revell (2010) that allows simultaneous estimation of regression parameters and lambda (λ : a measure of the strength of phylogenetic signal in the data with 0 = no phylogenetic structure, and 1 = data fully explained by the phylogeny) using maximum likelihood. The allometric equations were tested based on sample availability ($n = 67$ for bite force; $n = 61$ for sensory parameters, including all the species except Pteropodidae; $n = 34$ for muscle parameters) and residuals were subsequently used for the analyses of association between functional parameters and skull shape.

Skull shape variation, phylogenetic signal and ecological grouping

A Principal Component Analysis (PCA) was performed on Procrustes shape coordinates in order to visualize the skull shape variation in the sample. The 3D model of *Artibeus jamaicensis* was warped on the consensus (*i.e.*, mean shape of the dataset), and the result was subsequently warped on the maximum and minimum shape of the first two PC axes to indicate major morphological variation in the dataset (Klingenberg 2013). The warped model on the consensus was used as the reference mesh in all the subsequent shape visualizations to facilitate comparisons between the different analyses. Wireframe visualizations were equally provided in the supplementary figures to provide a more detailed representation of shape changes strictly associated to changes in the landmark spatial positioning.

The K statistic of Blomberg *et al.* (2003) was used to test for the presence of a phylogenetic signal in the shape data. The K statistic reflects the degree of congruence between the trait and the phylogeny (Blomberg *et al.* 2003) and has been extended to multivariate data (K_{multiv}) by Adams (2014). Statistical significance of K_{multiv} was assessed using randomization (Adams 2014).

Associations between skull shape and ecological categories (diet and emission type) were tested using phylogenetic multivariate analysis of variance (pMANOVA; Clavel & Morlo (2020)). This is a novel approach that allows incorporation of several evolutionary models. Specifically, skull shape data represented the dependent variable (Y, multivariate) and ecological categories the independent (X). Phylogeny was accounted for using the following models: Brownian Motion (BM) where the amount of evolutionary change in a trait is proportional to branch lengths; Early Burst (EB) that assumes exponentially reductions in diversification rates through time as found in adaptive radiations (Harmon *et al.* 2010; Ingram *et al.* 2012); Ornstein–Uhlenbeck (OU), a model that takes into account stabilizing/divergent selection and stasis so that traits can evolve towards a single or multiple optima (Hansen 1997; Butler and King 2004; Beaulieu *et al.* 2012); lambda branch length transformations that stretch basal or terminal nodes approximating different levels of phylogenetic signal in the data (Pagel 1999). Models were compared using penalised likelihood and best model implemented in the final pMANOVA.

Evolutionary trade-off between feeding and sensory function

Phylogenetic Partial Least Squares (phylo-PLS) was employed to test for association between skull shape data and functional parameters in the sub-sample of laryngeal echolocating bats ($n = 61$) and insectivore species ($n = 19$). This method was preferred because it allows phylogenetic relatedness (using the function ‘phylo.integration’, Adams & Felice 2014) and the relative association within and between each block of multivariate variables (in our case, skull shape data and feeding/echolocation parameters, Table 1) to be simultaneously taken into account without assuming any directionality (there is no dependent or independent block of variables). Phylo-PLS model should be significant if bats are able to optimise skull shape for feeding function and frequency emission (see Jacobs *et al.* 2014).

For the subsample of laryngeal echolocating bats ($n=61$), bite force was the only representative feeding variable while in the insectivores ($n=19$) relative masticatory muscle masses were also analysed. These variables were represented by residuals from PGLS allometric models (see Nogueira et al. (2009) that equally identified covariation between Phyllostomidae skull shape and residual bite force). Finally, the block of functional parameters was divided into feeding and echolocation for further phylo-PLS models. Strength of association between shape data and functional blocks of variables was quantified using the RV coefficient (Escoufier 1973) and compared between models using z-scores (Adams & Collyer 2016). The reference skull mesh was warped on the maximum and minimum shapes for the phylo-PLS models to visualize shape covariation with feeding and echolocation. The comparison of shape changes that were related to echolocation and feeding provided insights into possible functional trade-offs.

Results

Size variation in bat skulls

The PGLS models identified a significant positive association between skull size and feeding parameters in all cases, while negative relationships were found for all echolocation parameters except “Duration” (Table 2). Lambda varied between 0.00, indicating no phylogenetic signal (e.g., the digastric and temporalis muscle mass) and 1.00, indicative of traits following Brownian Motion model (as found for the majority of sensory parameters). This supports the presence of a significant phylogenetic and allometric signal in both feeding and echolocation parameters.

Skull shape variation and ecological grouping

Most of the morphological variation between the 67 bat species was described by principal components 1 (PC1) and 2 (PC2) (33.35% and 27.02%, respectively) (Fig. 2; Fig. S1). PC1 displayed shape variation related to rostrum length, zygomatic arch length and braincase height, and separated NLE species (*i.e.*, Pteropodidae family, frugivores) from LE species (generally insectivores). PC2 showed variation mainly related to palatal length (*i.e.*, maxillary and palatine bones) and braincase length with mouth emitting species displaying a longer palatal length but a shorter braincase respect to nasal and nasal/mouth emitting species (Fig. 2; Fig. S1).

A significant phylogenetic signal was identified in skull shape ($P < 0.001$) with $K_{multiv} = 1.255$, a value greater than expected under the BM model of evolution.

EB model was found to be the best mode of evolution when testing for association between skull shape and diet (loglikelihood = 13950.11, compared to 13865.6 found for BM, OU and lambda models did not differ at all from BM in loglikelihood). Using the EB model, pMANOVA identified a significant impact of diet on skull shape (Pillai’s trace = 5.286, $P = 0.001$) explaining 13.93% of total

variance. EB model was also favoured for the emission type categories (loglikelihood = 15080.28 compared to 15043.91 found for BM, OU and lambda), which were found to explain 52.34% of skull shape variance (Pillai's trace = 2.276, $P = 0.001$).

Analyses of trade-offs between feeding and sensory function

Phylo-PLS identified seven pairs of covariation vectors for skull shape and functional variables in 61 LE bats of which the first was significant (r -PLS = 0.662, $P = 0.0014$, Effect Size = 3.244). The PLS1 vector was strongly loaded on residual bite force and much less so on echolocation parameters (Table 3). When phylo-PLS was repeated using only echolocation parameters as a functional block, no significant association could be detected with the shape vector (r -PLS = 0.541, $P = 0.080$, Effect Size: 1.474), while correlation between skull shape and residual bite force remained significant when in isolation (r -PLS = 0.646, $P = 8e-04$, Effect Size = 3.366, Fig. 3a). This relationship is mainly described by the relative length of the rostrum: species with relatively greatest bite force for their skull size (e.g. *Molossus molossus*) had a rostrum length that was much shorter than the braincase (Fig. 3a, Fig. S2). Within a subsample of 19 insectivores, a significant association between skull shape and all functional variables (including relative muscle mass) still holds (r -PLS = 0.867, $P = 0.006$, Effect Size = 2.6504). PLS vector loading again revealed a predominant impact of feeding rather than sensory parameters (Table 3), so separate phylo-PLSs were conducted. Significant correlation occurs between skull shape and feeding variables in isolation (r -PLS = 0.865, $P = 0.007$, Effect Size = 2.6716) but not between skull shape and sensory variables (r -PLS = 0.6518, $P = 0.2761$, Effect Size = 0.61251). A closer inspection of the phylo-PLS plot (Fig. S3) showed two significant outliers of the Molossidae family. When both species were removed ($n = 17$) phylo-PLS identified an opposite trend (Fig. 3b). The skull shape vector was not significantly correlated with the feeding vector (r -PLS = 0.698, $P = 0.063$, Effect Size = 1.543), but was correlated with the sensory vector (r -PLS = 0.7716, $P = 0.0127$, Effect Size = 2.31483). This was negatively loaded on start, end and peak frequency (Table 3) so that species at positive scores are characterised by a diagonally tilted and shorter rostrum, wider braincase and larger bullae (Fig. 3b).

Discussion

The chiropteran skull is optimally designed for multiple functions. By using a representative taxonomic sample of 10 out of 21 families we identified a predominant impact of feeding adaptations on skull shape above species level. This pattern was abundantly validated in the diverse Phyllostomidae family (Dumont 2007; Nogueira et al. 2009) and our results extend it to many more bat families. Relative rostrum length plays a significant role in optimising bite force (Fig. 3a) thus supporting the recent proposal by Hedrick et al. (2020) that this trait allows occupation of multiple feeding niches along a line of least evolutionary resistance.

Diet explains a substantial proportion of shape variation in our sample and the implementation of more complex evolutionary models suggested that Brownian Motion is not an appropriate model fit to investigate skull phenotypic adaptations in bats. For our sample, Early Burst provided a better implementation of the comparative methods in line with the rapid radiation of bat morphologies conjunctly with echolocation adaptations (Arbour *et al.* 2019). It is thus expected that the categorical variable “emission type” provided in our case even stronger exploratory power for skull shape variation (c.ca 50%) than diet (c.ca 13%). Such a profound impact is well supported by a recent embryonic study that identified common developmental origin in the hearing apparatus of NLE bats (pteropodids) and all other of non-chiropteran mammals (Noijri *et al.* 2021).

The deep divergence of Pteropodidae from all other LE bats is depicted by our PCA (Fig. 2). Bigger cochlea and tympanic bulla are common morphological traits to all LE bats, supporting the idea that cochlea hypertrophy is linked to laryngeal echolocation ability (Simmons, Seymour, Habersetzer, & Gunnell, 2008). In fact, cochlea size is known to scale with the vestibular system and to correlate with canal morphologies which differentiate LE from NLE bats (Davies *et al.* 2013). We also found that LE bats have taller braincases, which might represent the need to accommodate a brain with different spatial constraints from NLE bats. For example, LE bats display larger auditory nuclei than NLE (Hutcheon *et al.* 2002), even though their relative brain size is smaller (Jones & MacLarnon 2004; Thiagavel *et al.* 2018).

Within LE bats, mouth emitters significantly differed in shape from nasal and nasal/mouth emitters. Nasal emission is an innovation in bat skull morphology and implies deep cranial rearrangements (Pedersen 2000). The shorter and narrower palate, together with the increased length and decreased height of the braincase seems to be connected to shape rearrangements due to the nasal emission (and nasal/mouth emission). Cochlear features (*i.e.*, basilar membrane length and number of cochlea turns) correlate with echolocation frequencies (Davies *et al.* 2013), therefore, differences in cochlea and tympanic bulla relative size between the two groups can relate to variation in hearing limits or echolocation characteristics.

In terms of skull size, allometric patterns for all feeding and sensory parameters have been here established implementing phylogenetic regression (Revell 2010). The scaling of bite force and masticatory muscle mass with skull size was explored by Herrel *et al.* (2008) on 16 species providing slopes unsurprisingly similar to those presented here on a larger sample (Table 2). Muscle mass scales with skull size following a geometric expectation (slopes between 2.58-2.88) with temporalis not showing significant departure from this pattern.

The allometry of sensory parameters supported a pattern established for frequency peak in some families of insectivorous bats (Jacobs & Bastian 2018; Jones 1999; Thiagavel *et al.* 2017). Species with bigger body size and, hence, longer vocal folds produce lower frequencies confirming the negative allometry also for Start, End Frequency and Sweep Rate. Interestingly, we found no significant association between these echolocation parameters and skull shape at broad taxonomic scale.

Thiagavel *et al.* (2018) hypothesised the retention of a trade-off between vision and echolocation in extant LE bat species. Nectar, fruit, blood, and vertebrate eating species use vision and smell in combination with echolocation to detect and locate food items (Bahlman & Kelt 2007; Ripperger *et*

al. 2019; Surlykke *et al.* 2013). These species share a similar hunting ecology: they hunt static food items in cluttered environments through a passive or active gleaning mode (Denzinger & Schnitzler 2013). In contrast, insectivorous bats have evolved the use of echolocation as their main sensory system for prey detection and pursuit of rapidly-moving prey. This might explain why we only identified a significant association between skull shape and echolocation for some insectivorous bats.

Molossidae within the insectivore bat families were clear outliers in skull shape morphology and this might be due to their extremely durophagous adaptation in hunting beetles (Freeman 1981). Indeed, they also exhibit proportionally higher bite forces when compared to sampled insectivores with similar skull size (e.g. *M. molossus* with 8.4 Newton compared to *Micronycteris megalotis* with 2.31 Newton, Table S1). Aguirre *et al.* (2003) already proposed that within insectivorous species a degree of morphological distinctiveness occur in relation to prey size and food hardness, and by sampling a more homogenous skull shape bauplan of species within Vespertilionidae, Phyllostomidae and Rhinolophidae, we were able to detect association with echolocation parameters. This relationship was clearly driven by the rostral tilting which is greater in species emitting higher frequencies. Interestingly, within this same subsample no relationship between skull shape and feeding parameters could be detected thus questioning the idea of trade-off between feeding and echolocation function.

Higher bite forces and larger muscles are functionally advantageous as they allow for the possible consumption of a wider range of prey (Aguirre *et al.* 2003; Nogueira *et al.* 2009). On the other hand, whether high frequencies are disadvantageous is debatable. A known disadvantage of high frequencies is the range of effectiveness: atmospheric attenuation is severe, allowing detectability in the short-field only (Lawrence & Simmons 1982). Species emitting low frequencies have a long-field resolution but their bite force is weaker and their long rostrum is less resistant to torsion. Higher frequencies might promote niche specialization allowing for the detection of smaller prey: the wavelength of the sound emitted has to be shorter than the circumference of the object in order to produce strong echoes (Jones 1999; Pye 1993). Species emitting very low frequency calls are potentially unable to detect small preys (Barclay 1986; Barclay & Brigham 1991; Safi & Siemers 2010). It is argued, however, that most of the bats use frequencies three or more times higher than is necessary to detect the smallest prey in their diet (Jakobsen *et al.* 2013). Furthermore, higher frequencies allow for higher beam directionality which maximizes the effectiveness of the echoes in the focal area and “isolates” echoes from the periphery (Surlykke *et al.* 2009). Thus, while beam directionality and detectability of smaller prey appear to be potential advantages in niche exploitation, the potential disadvantage is atmospheric attenuation.

In conclusion, skull diversification among bat families is mainly driven by sound emission type and broad diet preferences. Echolocation parameters were associated with skull shape in a subsample of insectivorous species only, suggesting that within similar feeding niches a stronger selection might occur due to the preferential use of echolocation as sensory system. The trade-off between feeding and echolocation function is questioned by our data analyses that instead support a predominant impact of characteristics on skull shape variation in bats at a broad taxonomic scale.

SUPPLEMENTARY MATERIALS

Supplementary Methods

Supplementary Tables 1-5

Supplementary Figures 1-3

Supplementary References

Acknowledgements

The authors are grateful to the staff of the following museums for providing access and allowing collection of morphological data: Royal Belgian Institute of Natural Science (Brussels), Magyar Természettudományi Múzeum (Budapest), Statens Naturhistoriske Museum (Copenhagen), World Museum (Liverpool), London Natural History Museum, Muséum National d'Histoire Naturelle (Paris) and Naturhistorisches Museum (Vienna). This research received support from the SYNTHESYS 3 Project <http://synthesys3.myspecies.info/> which is financed by the European Community Research Infrastructure Action under the FP7 (BE-TAF-6601, HU-TAF-6926, DK-TAF-6870, FR-TAF-6924, AT-TAF-6820; awarded to the first author). The authors would like to thank Stefan Greif for helping with muscle dissections.

References

- Adams DC (2014). A Generalized K Statistic for Estimating Phylogenetic Signal from Shape and Other High-Dimensional Multivariate Data. *Systematic Biology* **63**, 685–697.
- Adams DC, Collyer ML (2015). Permutation tests for phylogenetic comparative analyses of high-dimensional shape data: What you shuffle matters. *Evolution* **69**, 823–829.
- Adams DC, Collyer ML (2016). On the comparison of the strength of morphological integration across morphometric datasets. *Evolution* **70**, 2623–2631.
- Adams DC, Collyer ML (2018). Phylogenetic ANOVA: Group-clade aggregation, biological challenges, and a refined permutation procedure. *Evolution* **72**, 1204–1215.
- Adams DC, Felice RN (2014). Assessing Trait Covariation and Morphological Integration on Phylogenies Using Evolutionary Covariance Matrices. *PLoS ONE* **9**, e94335.
- Adams DC, Otárola-Castillo E (2013). geomorph: an r package for the collection and analysis of

geometric morphometric shape data. *Methods in Ecology and Evolution* **4**, 393–399.

Aguirre LF, Herrel A, van Damme R, Matthysen E (2002). Ecomorphological analysis of trophic niche partitioning in a tropical savannah bat community. *Proceedings of the Royal Society of London. Series B: Biological Sciences* **269**, 1271 LP – 1278.

Aguirre LF, Herrel A, Van Damme R, Matthysen E (2003). The implications of food hardness for diet in bats. *Functional Ecology* **17**, 201–212.

Arbour JH, Curtis AA, Santana SE (2019). Signatures of echolocation and dietary ecology in the adaptive evolution of skull shape in bats. *Nature Communications* **10**, 2036.

Armstrong KN, Coles RB (2007). Echolocation Call Frequency Differences Between Geographic Isolates of *Rhinonictis Aurantia* (Chiroptera: Hipposideridae): Implications of Nasal Chamber Size. *Journal of Mammalogy* **88**, 94–104.

Bahlman JW, Kelt DA (2007). Use of Olfaction During Prey Location by the Common Vampire Bat (*Desmodus rotundus*)¹. *Biotropica* **39**, 147–149.

Barclay RMR (1986). The echolocation calls of hoary (*Lasiurus cinereus*) and silver-haired (*Lasionycteris noctivagans*) bats as adaptations for long- versus short-range foraging strategies and the consequences for prey selection. *Canadian Journal of Zoology* **64**, 2700–2705.

Barclay RMR, Brigham RM (1991). Prey detection, dietary niche breadth, and body size in bats: why are aerial insectivorous bats so small? *American Society of Naturalists* **137**, 693–703.

Blanckenhorn WU (2000). The Evolution of Body Size: What Keeps Organisms Small? *The Quarterly Review of Biology* **75**, 385–407.

Blomberg SP, Garland T, Ives AR (2003). Testing for phylogenetic signal in comparative data: behavioral traits are more labile. *Evolution* **57**, 717–745.

Bogdanowicz W, Fenton MB, Daleszczyk K (1999). The relationships between echolocation calls, morphology and diet in insectivorous bats. *Journal of Zoology* **247**, 381–393.

Cardini A. (2019). Craniofacial allometry is a rule in evolutionary radiations of placentals. *Evolutionary Biology* **46**, 513754.

Cardini A, Jansson AU, Elton S (2007). A geometric morphometric approach to the study of ecogeographical and clinal variation in vervet monkeys. *Journal of Biogeography* **34**, 1663–1678.

Cardini A, Polly PD (2013). Larger mammals have longer faces because of size-related constraints on skull form. *Nature Communications* **4**, 2458.

Clavel J, Morlon H (2020). Reliable phylogenetic regressions for multivariate comparative data: illustration with the MANOVA and application to the effect of diet on mandible morphology in Phyllostomid bats. *Systematic biology* **69**, 927–943.

- Clavel J, Escarguel G, Merceron G (2015). mvMORPH: an R package for fitting multivariate evolutionary models to morphometric data. *Methods in Ecology and Evolution* **6**, 1311–1319.
- Davies KTJ, Bates PJJ, Maryanto I, Cotton JA, Rossiter SJ (2013). The Evolution of Bat Vestibular Systems in the Face of Potential Antagonistic Selection Pressures for Flight and Echolocation. *PLoS ONE* **8**, 8–10.
- Davies, KTJ, Maryanto I, Rossiter SJ (2013). Evolutionary origins of ultrasonic hearing and laryngeal echolocation in bats inferred from morphological analyses of the inner ear. *Frontiers in Zoology* **10**, 2.
- Denzinger A, Schnitzler H (2013). Bat guilds , a concept to classify the highly diverse foraging and echolocation behaviors of microchiropteran bats. *Frontiers in Zoology* **4**, 1–15.
- Drake AG, Klingenberg CP (2008). The pace of morphological change: historical transformation of skull shape in St Bernard dogs. *Proceedings of the Royal Society B: Biological Sciences* **275**, 71–76.
- Dumont ER (2007). Feeding mechanisms in bats: variation within the constraints of flight. *Integrative and Comparative Biology* **47**, 137–146.
- Dumont ER, Samadevam K, Grosse I, Warsi OM, Baird B, Davalos LM (2014). Selection for mechanical advantage underlines multiple cranial optima in the new world leaf-nosed bat. *Evolution* **68**, 1436–1449.
- Dumont ER, Davalos LM, Goldberg A, Santana SE, Rex K, Voigt CC (2012). Morphological innovation, diversification and invasion of a new adaptive zone. *Proceedings of the Royal Society B: Biological Sciences* **279**, 1797–1805.
- Elemans CPH, Mead AF, Jakobsen L, Ratcliffe JM (2011). Superfast Muscles Set Maximum Call Rate in Echolocating Bats. *Science* **333**, 1885–1888.
- Escoufier, Y. (1973). Le Traitement des Variables Vectorielles. *Biometrics* **29**, 751:760.
- Freckleton RP (2009). The seven deadly sins of comparative analysis. *Journal of Evolutionary Biology* **22**, 1367–1375.
- Freeman PW (1998). Form, function, and evolution in skulls and teeth of bats. In: Kunz TH, Racey PA, Eds. *Bat Biology and Conservation*. Washington: Smithsonian Institution Press. pp. 140–156
- Giacomini G, Scaravelli D, Herrel A, Veneziano A, Russo D, Brown RP, Meloro C (2019). 3D Photogrammetry of Bat Skulls: Perspectives for Macro-evolutionary Analyses. *Evolutionary Biology* **46**, 249–259.
- Goudy-Trainor A, Freeman PW (2002). Call Parameters and Facial Features in Bats: A Surprising Failure of form Following Function. *Acta Chiropterologica* **4**, 1–16.
- Hedrick BP, Mutumi GL, Munteanu VD, Sadier A, Davies KT, Rossiter SJ, Sears KE, Dávalos LM,

- Dumont E (2020). Morphological diversification under high integration in a hyper diverse mammal clade. *Journal of Mammalian Evolution* **27**, 563–575.
- Hedrick BP, Dumont ER (2018). Putting the leaf-nosed bats in context: a geometric morphometric analysis of three of the largest families of bats. *Journal of Mammalogy* **99**, 1042–1054.
- Herrel A, De Smet A, Aguirre LF, Aerts P (2008). Morphological and mechanical determinants of bite force in bats: do muscles matter? *Journal of Experimental Biology* **211**, 86–91.
- Herring SW (1993). Functional morphology of mammalian mastication. *American Zoologist* **33**, 289–299.
- Hutcheon JM, Kirsch JAW, Garland Jr T (2002). A Comparative Analysis of Brain Size in Relation to Foraging Ecology and Phylogeny in the Chiroptera. *Brain, Behavior and Evolution* **60**, 165–180.
- Jacobs DS, Barclay RMR, Walker MH (2007). The allometry of echolocation call frequencies of insectivorous bats: why do some species deviate from the pattern? *Oecologia* **152**, 583–594.
- Jacobs DS, Bastian A (2018). High Duty Cycle Echolocation May Constrain the Evolution of Diversity within Horseshoe Bats (Family: Rhinolophidae). *Diversity* **10**, 85.
- Jacobs DS, Bastian A, Bam L (2014). The influence of feeding on the evolution of sensory signals: A comparative test of an evolutionary trade-off between masticatory and sensory functions of skulls in southern African Horseshoe bats (Rhinolophidae). *Journal of Evolutionary Biology* **27**, 2829–2840.
- Jakobsen L, Brinkløv S, Surlykke A (2013). Intensity and directionality of bat echolocation signals. *Frontiers in Physiology* **4**, 89.
- Jakobsen L, Hallam J, Moss CF, Hedenström A (2018). Directionality of nose-emitted echolocation calls from bats without a nose leaf (*Plecotus auritus*). *Journal of Experimental Biology* **221**.
- Janis CM (1990). Correlation of Cranial and Dental Variables with Dietary Preferences in Mammals: A Comparison of Macropodoids and Ungulates. *Memoirs of the Queensland Museum* **28**, 349–366.
- Jones G (1999). Scaling of echolocation call parameters in bats. *Journal of Experimental Biology* **202**, 3359 LP – 3367.
- Jones G, Siemers BM (2011). The communicative potential of bat echolocation pulses. *Journal of Comparative Physiology A* **197**, 447–457.
- Jones G, Teeling E (2006). The evolution of echolocation in bats. *Trends in Ecology & Evolution* **21**, 149–156.
- Jones KE, MacLarnon AM (2004). Affording Larger Brains: Testing Hypotheses of Mammalian Brain Evolution on Bats. *The American Naturalist* **164**, E20–E31.

- Klingenberg CP (2013). Visualizations in geometric morphometrics: how to read and how to make graphs showing shape changes. *Hystrix, the Italian Journal of Mammalogy* **24**, 15–24.
- Klingenberg CP (2016). Size, shape, and form: concepts of allometry in geometric morphometrics. *Development Genes and Evolution* **226**, 113–137.
- Lawrence BD, Simmons JA (1982). Measurements of atmospheric attenuation at ultrasonic frequencies and the significance for echolocation by bats. *The Journal of the Acoustical Society of America* **71**, 585–590.
- Loy A, Cataudella S, Corti M (1996). Shape Changes during the Growth of the Sea Bass, *Dicentrarchus labrax* (Teleostea: Perciformes), in Relation to Different Rearing Conditions BT. In: Marcus LF, Corti M, Loy A, Naylor GJP, Slice DE, Eds. *Advances in Morphometrics*. Boston, MA: Springer US, pp. 399–405.
- Meloro C, O’Higgins P (2011). Ecological Adaptations of Mandibular Form in Fissiped Carnivora. *Journal of Mammalian Evolution* **18**, 185–200.
- Nogueira MR, Peracchi AL, Monteiro LR (2009). Morphological correlates of bite force and diet in the skull and mandible of phyllostomid bats. *Functional Ecology* **23**, 715–723.
- Nojiri T., Wilson LA, López-Aguirre C, Tu VT, Kuratani S, Ito K, Higashiyama H, Son NT, Fukui D, Sadier A, Sears KE (2021). Embryonic evidence uncovers convergent origins of laryngeal echolocation in bats. *Current Biology in press*, <https://doi.org/10.1016/j.cub.2020.12.043>
- Orme D, Freckleton R, Thomas G, Petzoldt T, Fritz S, Isaac N, Pearse W (2013). The caper package: comparative analysis of phylogenetics and evolution in R. *R package version 5*, 1–36.
- Pedersen SC (1998). Morphometric Analysis of the Chiropteran Skull with Regard to Mode of Echolocation. *Journal of Mammalogy* **79**, 91–103.
- Pedersen SC (2000). Skull growth and the acoustical axis of the head in bats. In: Adams RA, Pedersen SC, Eds. *Ontogeny, functional ecology, and evolution of bats*. New York: Cambridge University Press, pp. 174:213.
- Pye JD (1993). Is fidelity futile? The “true” signal is illusory, especially with ultrasound. *Bioacoustics* **4**, 271–286.
- Revell LJ (2012). phytools: an R package for phylogenetic comparative biology (and other things). *Methods in Ecology and Evolution* **3**, 217–223.
- Richtsmeier JT, Flaherty K (2013). Hand in glove: brain and skull in development and dysmorphogenesis. *Acta Neuropathologica* **125**, 469–489.
- Ripperger SP, Rehse S, Wacker S, Kalko E, Schulz S, Rodriguez-Herrera B, Ayasse M (2019). Nocturnal scent in a “bird-fig”: a cue to attract bats as additional dispersers? *PloSOne* **14**, 418970.
- Rohlf FJ (2006). A Comment on Phylogenetic Correction. *Evolution* **60**, 1509–1515.

- Rohlf FJ (2007). Comparative methods for the analysis of continuous variables: geometric interpretations. *Evolution* **55**, 2143–2160.
- Safi K, Dechmann DKN (2005). Adaptation of brain regions to habitat complexity: a comparative analysis in bats (Chiroptera). *Proceedings of the Royal Society B: Biological Sciences* **272**, 179–186.
- Safi K, Siemers BM (2010). Implications of sensory ecology for species coexistence: biased perception links predator diversity to prey size distribution. *Evolutionary Ecology* **24**, 703–713.
- Santana SE, Grosse IR, Dumont ER (2012). Dietary hardness, loading behavior, and the evolution of skull form in bats. *Evolution* **66**, 2587–2598.
- Santana SE, Dumont ER, Davis JL (2010). Mechanics of bite force production and its relationship to diet in bats. *Functional Ecology* **24**, 776–784.
- Schnitzler HU, Kalko EKV (2001). Echolocation by Insect-Eating Bats. *BioScience* **51**, 557–569.
- Seibert AM, Koblitz JC, Denzinger A, Schnitzler HU (2015). Bidirectional Echolocation in the Bat *Barbastella barbastellus*: Different Signals of Low Source Level Are Emitted Upward through the Nose and Downward through the Mouth. *PLoS One* **10**, e0135590.
- Senawi J, Schmieder D, Siemers BM, Kingston T (2015). Beyond size – morphological predictors of bite force in a diverse insectivorous bat assemblage from Malaysia. *Functional Ecology* **29**, 1411–1420.
- Shearer BM, Cooke SB, Halenar LB, Reber SL, Plummer JE, Delson E, Tallman M. (2017). Evaluating causes of error in landmark-based data collection using scanners. *PLOS ONE* **12**, e0187452.
- Shi JJ, Rabosky DL (2015). Speciation dynamics during the global radiation of extant bats. *Evolution* **69**, 1528–1545.
- Simmons NB, Seymour KL, Habersetzer J, Gunnell GF (2008). Primitive Early Eocene bat from Wyoming and the evolution of flight and echolocation. *Nature* **451**, 818.
- Surlykke A, Jakobsen L, Kalko E, Page R (2013). Echolocation intensity and directionality of perching and flying fringe-lipped bats, *Trachops cirrhosus* (Phyllostomidae). *Frontiers in Physiology* **4**, 1–9.
- Surlykke A, Pedersen SB, Jakobsen L (2009). Echolocating bats emit a highly directional sonar sound beam in the field. *Proceedings of the Royal Society B: Biological Sciences* **276**, 853–860.
- Thiagavel J, Cechetto C, Santana SE, Jakobsen L, Warrant EJ, Ratcliffe JM (2018). Auditory opportunity and visual constraint enabled the evolution of echolocation in bats. *Nature Communications* **9**, 98.
- Thiagavel J, Santana SE, Ratcliffe JM (2017). Body Size Predicts Echolocation Call Peak Frequency Better than Gape Height in Vespertilionid Bats. *Scientific Reports* **7**, 828.

Voigt CC, Lewanzik D (2012). 'No cost of echolocation for flying bats' revisited. *Journal of Comparative Physiology B* **182**, 831–840.

Wilson DE, Reeder DM (2005). *Mammal Species of the World: A Taxonomic and Geographic Reference*. Wilson DE, Reeder DM, Eds. (3rd ed.). Baltimore: The John Hopkins University Press.

Wroe S, McHenry C, Thomason J (2005). Bite club: comparative bite force in big biting mammals and the prediction of predatory behaviour in fossil taxa. *Proceedings of the Royal Society B: Biological Sciences* **272**, 619–625.

Figure 1 Landmark configuration on the skull of *Rhinolophus ferrumequinum*. Anatomical descriptions of landmarks is in Table S4.

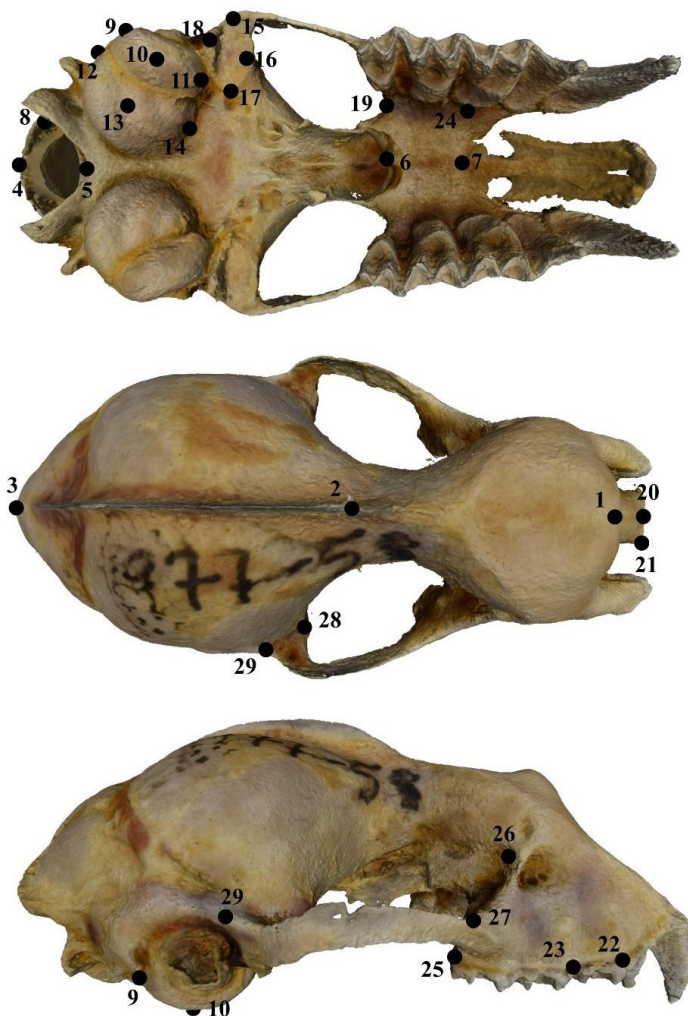


Figure 2 Plot of principal component scores for all species of the dataset (n=67) displayed by family and emission type (laryngeal echolocation: both mouth and nasal [B], nasal [R], mouth [M]; non-laryngeal echolocation, [NLE]). Shape variation was reported on dorsal (D), ventral (V) and lateral (L) views by warping maximum and minimum PC variation of each axes on the reference mesh.

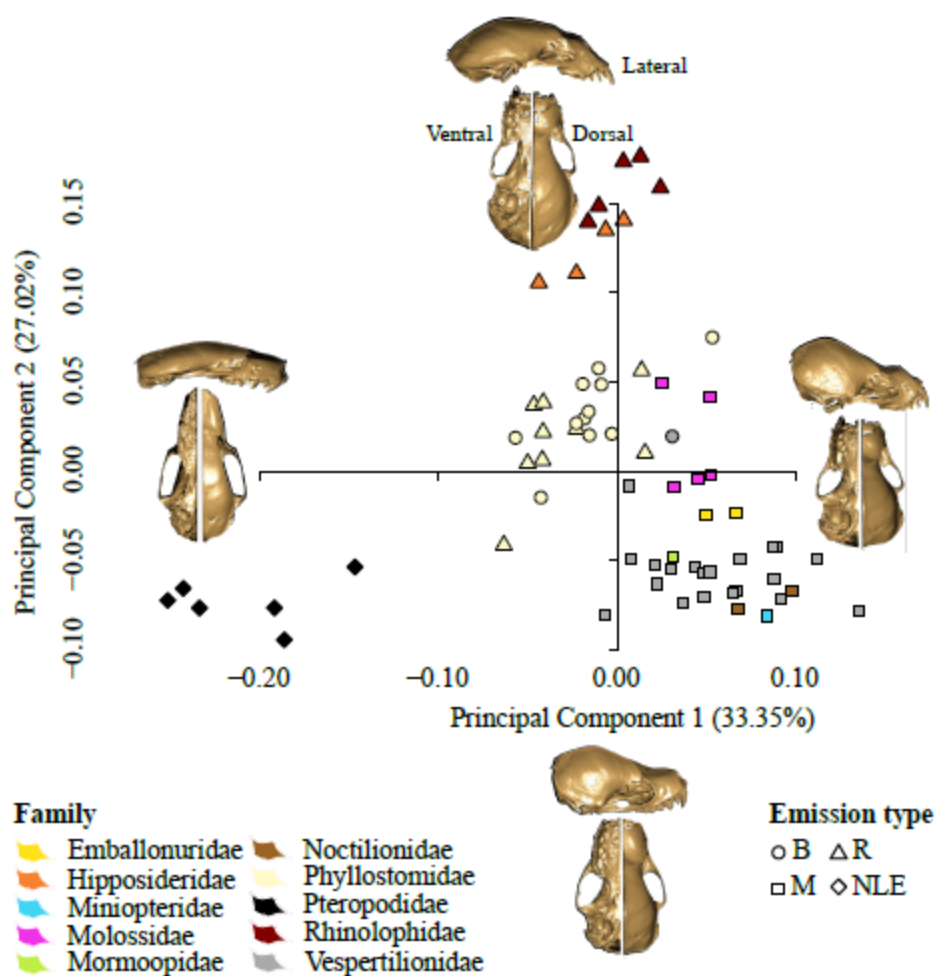
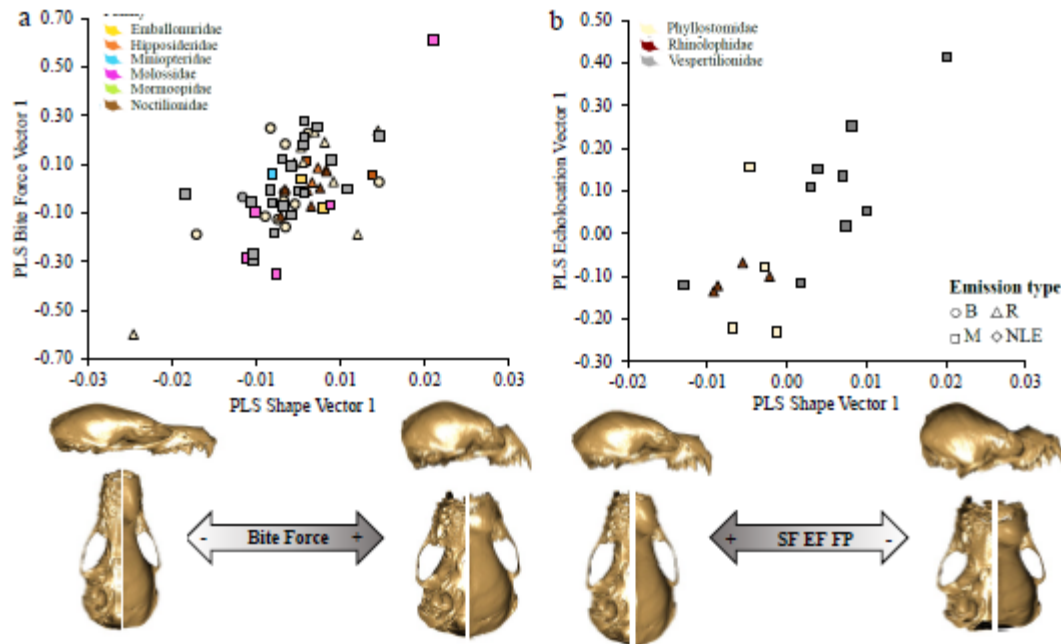


Figure 3 Plot of phylo-PLS showing association between skull shape and bite force PLS vector in a subsample of LE bats (n=61, a) and correlation between skull shape vs echolocation parameters in 17 insectivore species (b). Skull warpings show the shape variation related to the minimum (left) and maximum (right) values PLS vector scores.



Tables

Table 1 Functional traits used as covariates in the present study. Traits in *italics* were available for only a subsample of data (n=34).

Feeding parameters	Sensory parameters	Diet category	Emission type
Bite force (BF)	Peak frequency (FP)	Insectivorous (I)	Non-laryngeal echolocation (NI F) Nasal (R)
<i>Digastric muscle (DIG)</i>	Start frequency (SF)	Frugivorous (F)	
<i>Masseter muscle (MAS)</i>	End frequency (EF)	Hematophagous (H)	Mouth (M)
<i>Temporalis muscle (TEM)</i>	Bandwidth (BW)	Vertebrate eater (V)	Both mouth and nasal (B)
<i>Pterygoid muscle (PTE)</i>	Duration (D)	Nectarivorous (N)	
	Sweep rate (SR)	Omnivorous (O)	

Frugi/insectivorous (F,I)

Necta/fruigivorous (N,F)

Insect-vertebrate eater (I,V)

Table 2 Summary statistics of PGLS models using log Centroid Size as independent variable and feeding or sensory parameters (all log transformed) as dependent. P values are reported for both intercept and slope ($=\beta$). In bold are the non-significant p values. 95% confidence interval is reported for the lambda parameter estimated using maximum likelihood.

Dependent variable	N	Adj. R ²	Intercept	P	β	P	λ _a	95% conf.	
Feeding	Bite force	6 7	0.649	-4.073	< 0.001	3.108	< 0.001	0.719	(NA,0.965)
	Digastric	3 6	0.671	-3.134	< 0.001	2.772	< 0.001	0.000	(NA, 0.495)
	Masseter	3 4	0.693	-3.015	< 0.001	2.879	< 0.001	0.305	(NA, 0.797)
	Temporalis	3 4	0.675	-2.100	< 0.001	2.752	< 0.001	0.000	(NA, 0.845)
	Pterygoid	3 4	0.686	-2.803	< 0.001	2.576	< 0.001	0.348	(NA, 0.827)
Sensory	Peak frequency	6 1	0.194	2.742	< 0.001	- 0.666	< 0.001	1.000	(0.928, NA)
	Start frequency	6 1	0.129	2.737	< 0.001	- 0.616	< 0.003	0.996	(0.779, NA)
	End frequency	6 1	0.194	2.698	< 0.001	- 0.701	< 0.001	1.000	(0.851, NA)
	Bandwidth	6 1	0.000	1.972	0.008	- 0.468	0.319	0.977	(0.700, NA)
	Duration	6 1	0.076	-0.542	0.374	0.948	0.018	1.000	(0.880, NA)
	Sweep rate	6 1	0.050	2.556	0.023	- 1.443	0.046	1.000	(0.901, NA)

Table 3 Loadings on phylo-PLS vector 1 for different functional parameters, based on analyses of association between skull shape and functional traits, in a subsample of 61 laryngeal echolocating bats, 19 insectivores and the same sample after the exclusion of two Molossidae outlier (n = 17).

	PLS Vector 1 Loadings			
	LE bats	Insectivores		
	N=61	N=19	N =17	
Bite Force	0.959	0.474	0.237	-
Digastric mass	-	0.531	0.747	-
Masseter mass	-	0.381	0.351	-
Temporalis mass	-	0.435	0.347	-
Pterygoid mass	-	0.388	0.376	-
StartF (KHz)	-0.035	-0.053	-	-0.673
EndF (KHz)	0.155	-0.049	-	-0.493
BW (KHz)	-0.165	0.009	-	-0.107
Fpeak (KHz)	0.124	-0.050	-	-0.537
Duration (ms)	0.033	-0.018	-	0.033
Sweep.rate (KHz ms)	-0.105	0.026	-	-0.056