

Wright State University

**CORE Scholar**

---

Records of Dayton Together (MS-603)

Special Collections and Archives

---

10-2015

## **Possible 11 District Plan Montgomery County, Ohio**

Northern Ohio Data and Information Service

Follow this and additional works at: [https://corescholar.libraries.wright.edu/special\\_ms603](https://corescholar.libraries.wright.edu/special_ms603)



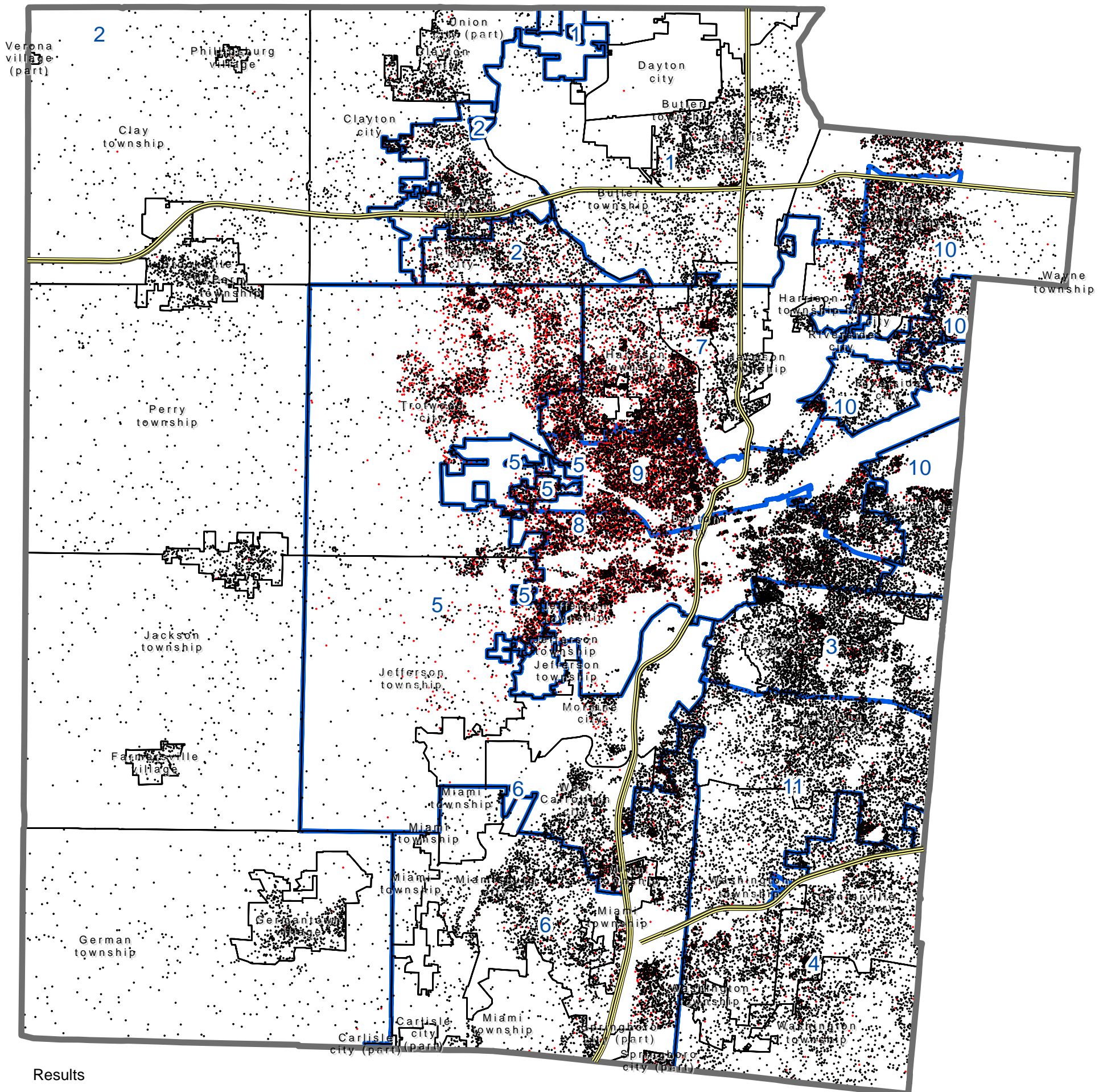
Part of the [Public Policy Commons](#)

---

# Possible 11 District Plan Montgomery County, Ohio

## Alternative 1

With Population and African American Distributions



### Results

District	Population	AA (all)	%
1	46,544	4,566	9.8%
2	49,195	3,274	6.7%
3	47,425	1,853	3.9%
4	46,600	2,436	5.2%
5	50,856	23,343	45.9%
6	50,735	3,524	6.9%
7	50,782	24,246	47.7%
8	48,307	23,314	48.3%
9	46,226	25,504	55.2%
10	50,141	5,580	11.1%
11	48,342	1,919	4.0%
Total	535,153	119,559	22.3%

### Population

1 Dot = 10  
POP100

### AA

1 Dot = 10  
blackall

Prepared by

The Northern Ohio Data & Information Service  
NODIS

Cleveland State  
University



Maxine Goodman Levin  
College of Urban Affairs

October 2015 mjs

