

*From Batoni's Brush to Canova's Chisel: Painted and sculpted portraiture at Rome,  
1740-1830*

*Volume Two of Two: Figures*

Maeve O'Dwyer

PhD Thesis

University of Edinburgh

2016

*Figure 1.1:* Pompeo Batoni, *Portrait of Joseph Leeson, later 1st Earl of Milltown*, 1744, 135.5 x 98.5cm, National Gallery of Ireland, Milltown Gift 1902, NGL.701



*Figure 1.2:* Pompeo Batoni, *Portrait of James Caulfield, later Lord Charlemont*, c. 1753-5, 97.8 x 73.7cm, Yale Center for British Art, B1974.3.26



*Figure 1.3:* Anthony Lee (attrib.), *Portrait of Joseph Leeson, later 1st Earl of Milltown*, c. 1735, 197.5 x 123.5cm, Sir Roy Strong Collection





*Figure 1.4:* Pompeo Batoni, *Portrait of Joseph Leeson, later 2nd Earl of Milltown*, 1751, 99 x 73.5cm, National Gallery of Ireland, Milltown Gift 1902, NGI.702



*Figure 1.5:* Pompeo Batoni, *Portrait of Joseph Henry of Straffan*, c. 1750, 98 x 72.5cm, The Walters Art Museum, Baltimore, 37.1932



Figure 1.6: Pier Leone Ghezzi, *Caricature of Joseph Henry of Straffan*, c. 1750, 31.2 x 21.3cm, The Metropolitan Museum of Art, Rogers Fund 1973, 1973.67



*Cavaliere Inglese dilettante delle Antichità*



Figure 1.7: Joshua Reynolds, *Parody of Raphael's 'School of Athens'*, 1751, 97 x 135cm, National Gallery of Ireland, Milltown Gift 1902, NGL.734





Figure 1.8: Raphael, *The School of Athens*, 1509-11, Apostolic Palace, Vatican



Figure 1.9: Close-up of Fig.1.7: Joseph Henry, Parody of Raphael's 'School of Athens'





Figure 1.10: Close-up of Fig. 1.7: Leeson's, Parody of Raphael's 'School of Athens'

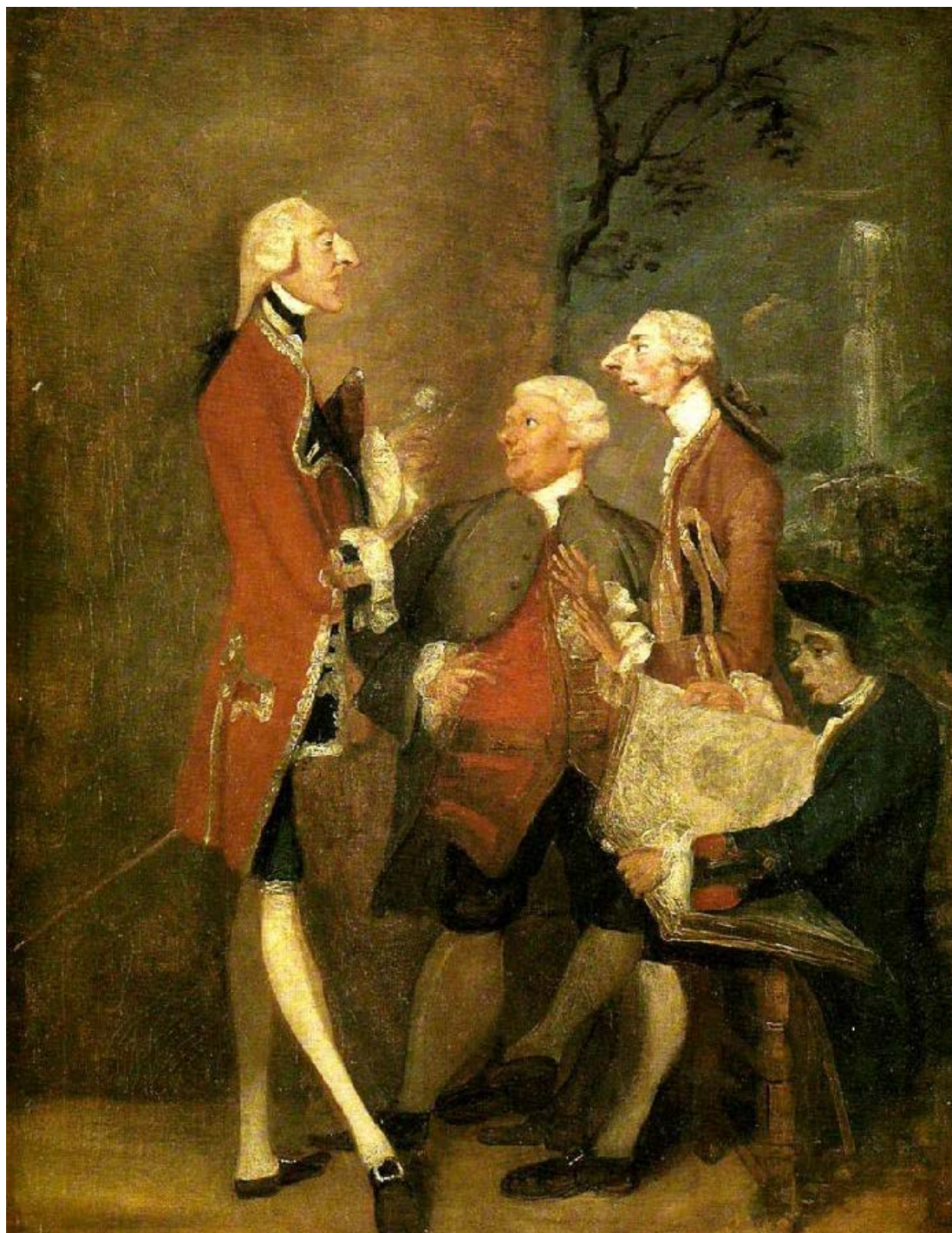




*Figure 1.11: Close-up of Fig. 1.7: Charlemont circle, Parody of Raphael's 'School of Athens'*



Figure 1.12: Joshua Reynolds, (*Four Learned Milordi*), Lord Bruce, John Ward, Joseph Leeson Junior and Joseph Henry, 1751, 64 x 49.5cm, National Gallery of Ireland, inv. no. 736





*Figure 1.13* Joshua Reynolds, *Sir Thomas Kennedy, Lord Charlemont, John Ward and Richard Phelps*, 1751, 64 x 49.5cm, National Gallery of Ireland, inv. no. 737





*Figure 1.14:* Katherine Read attrib., *Connoisseurs in Rome*, 1751, 94.5 x 134.5cm, Yale Center for British Art, B1981.25.272



*Figure 1.15:* Pompeo Batoni, *Portrait of Thomas Dawson, later 1st Viscount Cremorne*, c. 1751, 95.9 x 71.8cm, private collection



*Figure 1.16:* Pier Leone Ghezzi, *Joseph Leeson and James Caulfield*, c. 1751-53, 32.1 x 22.3cm, Philadelphia Museum of Art, Anthony Morris Clark Bequest 1978, 1978-70-290





*Figure 2.1:* *Vatican Ariadne*, height 1.62m, length 1.95m, Rome, Musei Vaticani, Galleria delle Statue



Figure 2.2: Pompeo Batoni, *Portrait of the Honourable Colonel William Gordon*, 1766, 258.2 x 186.1cm, National Trust for Scotland, Fyvie Castle



Figure 2.3: Pompeo Batoni, *Holy Roman Emperor Joseph II and Grand Duke Leopold of Tuscany in Rome*, 1769, 173 x 122.5cm, Kunsthistorisches Museum Wien, Gemäldegalerie 1628





*Figure 2.4:* Pompeo Batoni, *Henry Bankes*, 1779, 99.1 x 72.4cm, Kingston Lacy Estate, Dorset, National Trust, NT 1257055



Figure 2.5: *Minerva Giustiniani*, 2.23m, 5/4th century BCE, Musei Vaticani (Braccio Nuovo), Rome



Figure 2.6: Pompeo Batoni, *Portrait of a Gentleman*, c. 1758-9, 99 x 73.6cm, private collection





Figure 2.7: William Hogarth, *Sir Francis Dashwood at his Devotions*, late 1750s, 120 x 87.6cm, private collection



Figure 2.8: Joshua Reynolds, *Portrait of Kitty Fisher as Cleopatra Dissolving the Pearl*, 1759, 76.2 x 63.5cm, Kenwood Collection, English Heritage





*Figure 2.9: Alternate angle of Figure 2.1: Vatican Ariadne*

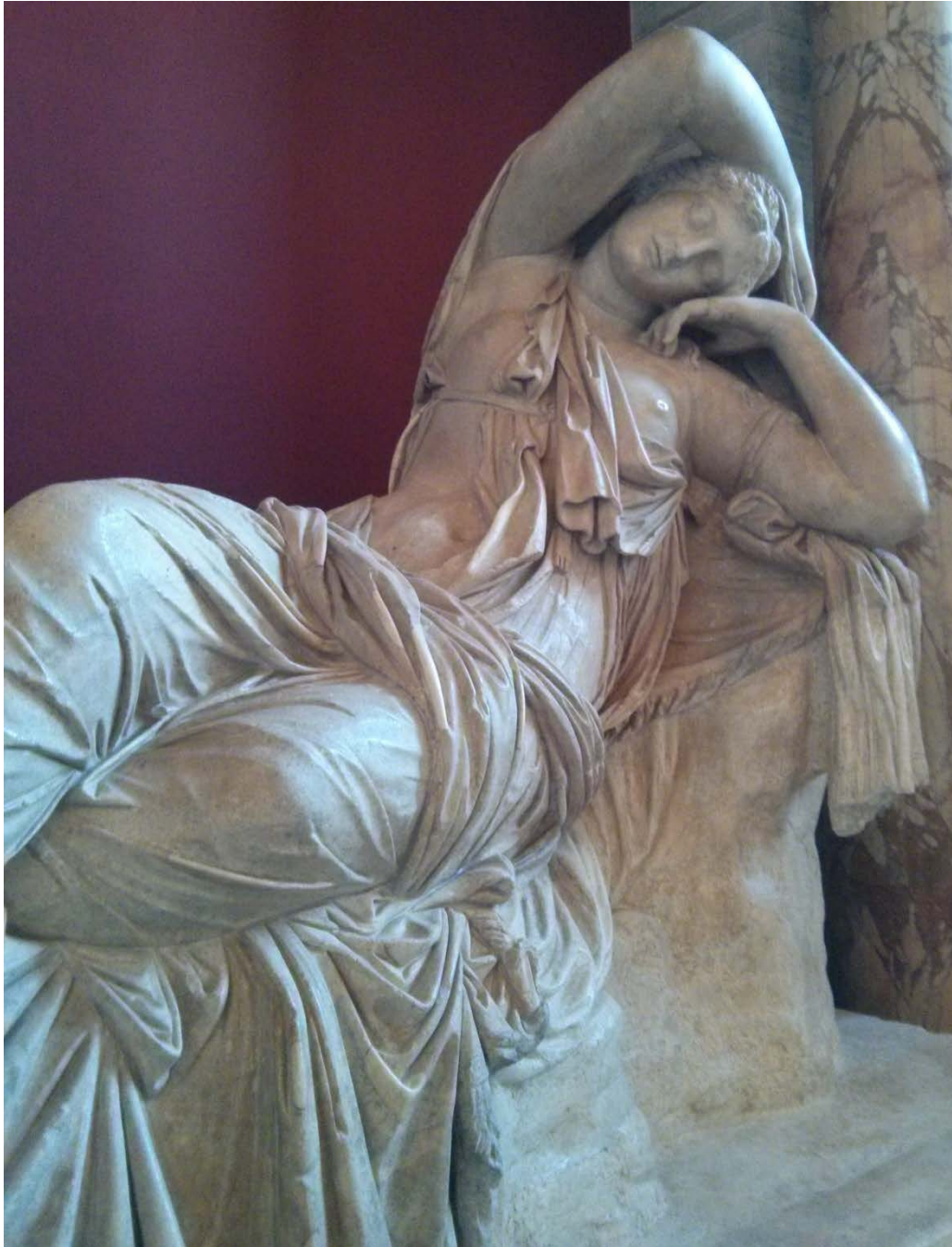




Figure 2.10: Francesco Primaticcio, bronze copy of the Vatican Ariadne, *L'Ariadne du Vatican*, 1540, le Galerie des Cerfs, Chateau du Fontainebleau



Figure 2.11: Pompeo Batoni, *Charles John Crowle*, 1761-2, 254 x 169cm, Musee du Louvre, Paris, R.F. 1931-87





Figure 2.12: Pompeo Batoni, *Thomas Dundas*, 1764, 298 x 196.8cm, The Marquess of Zetland, Aske Hall, West Yorkshire





*Figure 2.13:* Pompeo Batoni, *William Weddell*, 1766, 228.6 x 182.9cm, R.E.J. Compton, Newby Hall, North Yorkshire



Figure 2.14: Pompeo Batoni, *Count Kirill Grigorjewitsch Razumovsky*, 1766, 298 x 196cm, private collection, Vienna



Figure 2.15: Pompeo Batoni, *Thomas William Coke, later 1st Earl of Leicester of the Second Creation*, 1774, 245.8 x 170.3cm, Viscount Coke, Holkham Hall, Norfolk





Figure 2.16: *Farnese Hercules*, 3.17m, c. 216 A.D, now at the Museo Archeologico Nazionale, Naples, inv. no. 6001



*Figure 2.17:* Pompeo Batoni, *William Weddell*, 1765-1766, 133 x 96.9cm, Yale Centre for British Art, New Haven



Figure 3.1: *Map of Eighteenth-Century Rome*, available online at <http://nolli.uoregon.edu/map/index.html>





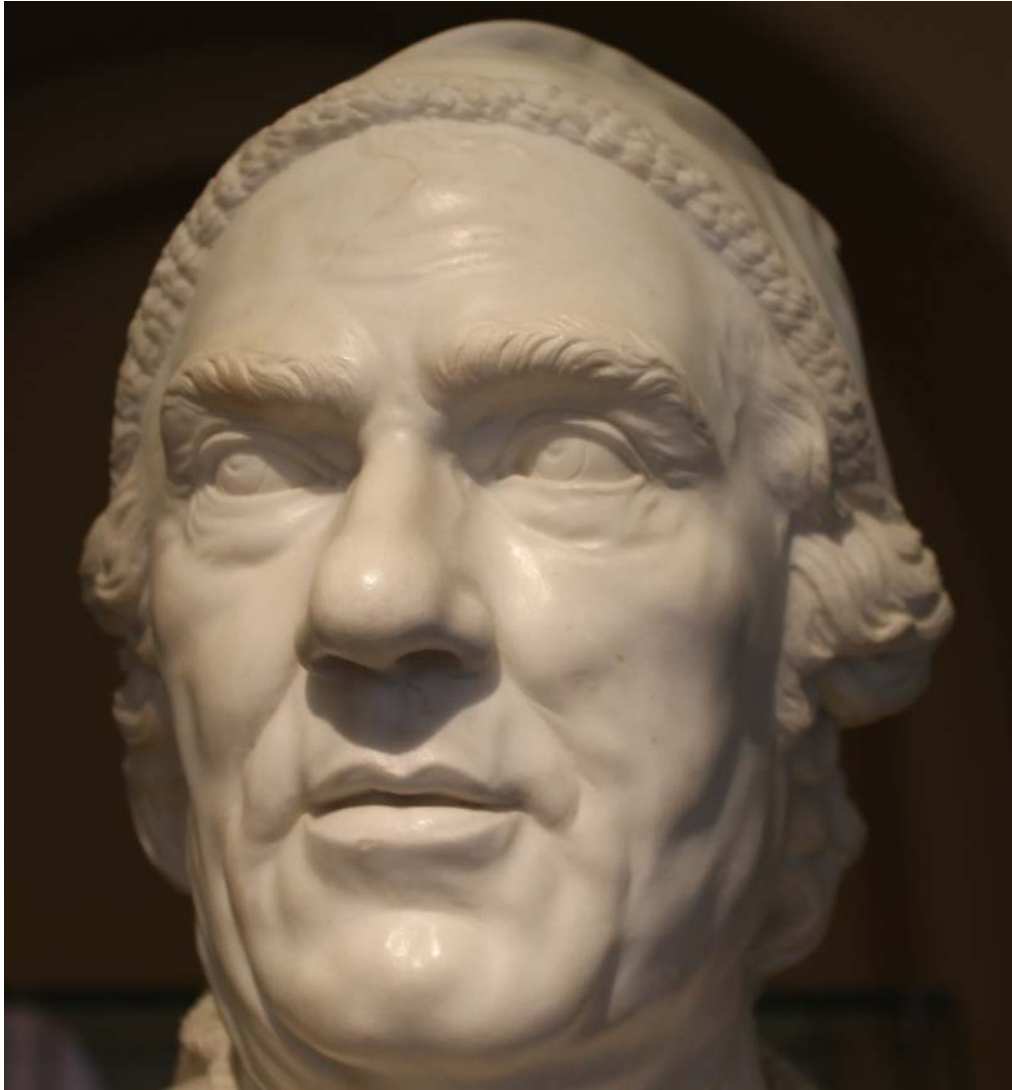
*Figure 3.2:* Christopher Hewetson, *Bust of Pope Clement XIV*, height 75cm, Victoria and Albert Museum, London, A.22-1948



*Figure 3.3: Side view of Figure 3.2: Bust of Pope Clement XIV*



*Figure 3.4: Close-up of Figure 3.2: Bust of Pope Clement XIV*





*Figure 3.5:* Christopher Hewetson, *Monument to Provost Baldwin*, Examination Hall, Trinity College Dublin



Figure 3.6: Stefano Tofanelli, *Christopher Hewetson and his Monument to Dr Baldwin in Trinity College*, c. 1783, 98 x 72cm, private collection



Figure 3.7: *Apollo Belvedere*, 2.24m, Vatican Museum, Cat. 1015





Figure 3.8: Domenico Conti, *Portrait of Antonio Canova in his Studio*, 1793, 244 x 191cm, private collection



Figure 4.1: Antonio Canova, *Napoleon as Mars the Peacemaker*, 1803-6, 3.45m, Apsley House, London

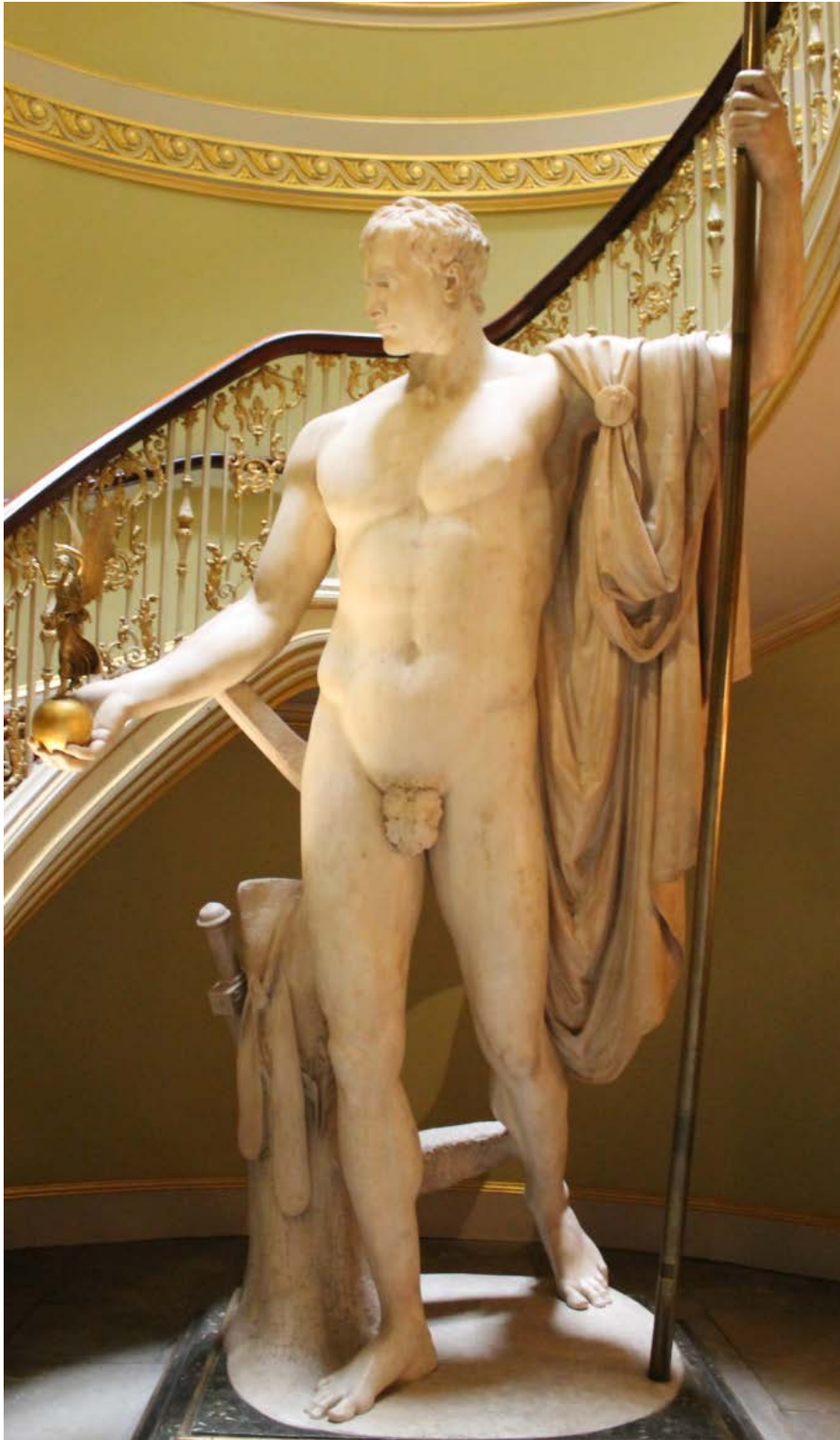


Figure 4.2: Antonio Canova, *Pauline Borghese as Venus Venetrix*, 1804-8, 160 x 192cm, Borghese Gallery, Rome





Figure 4.3: Medici Venus, 1.53m, Uffizi Gallery, Florence



Figure 4.4: Johann Zoffany, *The Tribuna of the Uffizi*, 1772-8, 123.5 x 155cm, Royal Collection, Windsor Castle



Figure 4.5: Lycian Apollo, Louvre, Paris





Figure 4.6: Antonio Canova, *Pugilists: Creugas and Damoxenos*, 1795-1806, Vatican Museum, 968-970



Figure 4.7: Antonio Canova, *Stuart Monument*, 1817-19, St. Peter's Basilica, Vatican, Rome



Figure 4.8: Jacques-Louis David, *Napoleon Crossing the Alps*, 1801, 261 x 221cm, Palace of Versailles





Figure 4.9: Jacques-Louis David, *Napoleon in His Study*, 1812, 203.9 x 125.1cm, National Gallery of Art, Washington



*Figure 4.10: Close-up of Figure 4.1: Napoleon as Mars*



*Figure 4.11: Close-up of Figure 4.1: Napoleon as Mars*





Figure 4.12: Close-Up of Figure 4.7: Stuart Monument

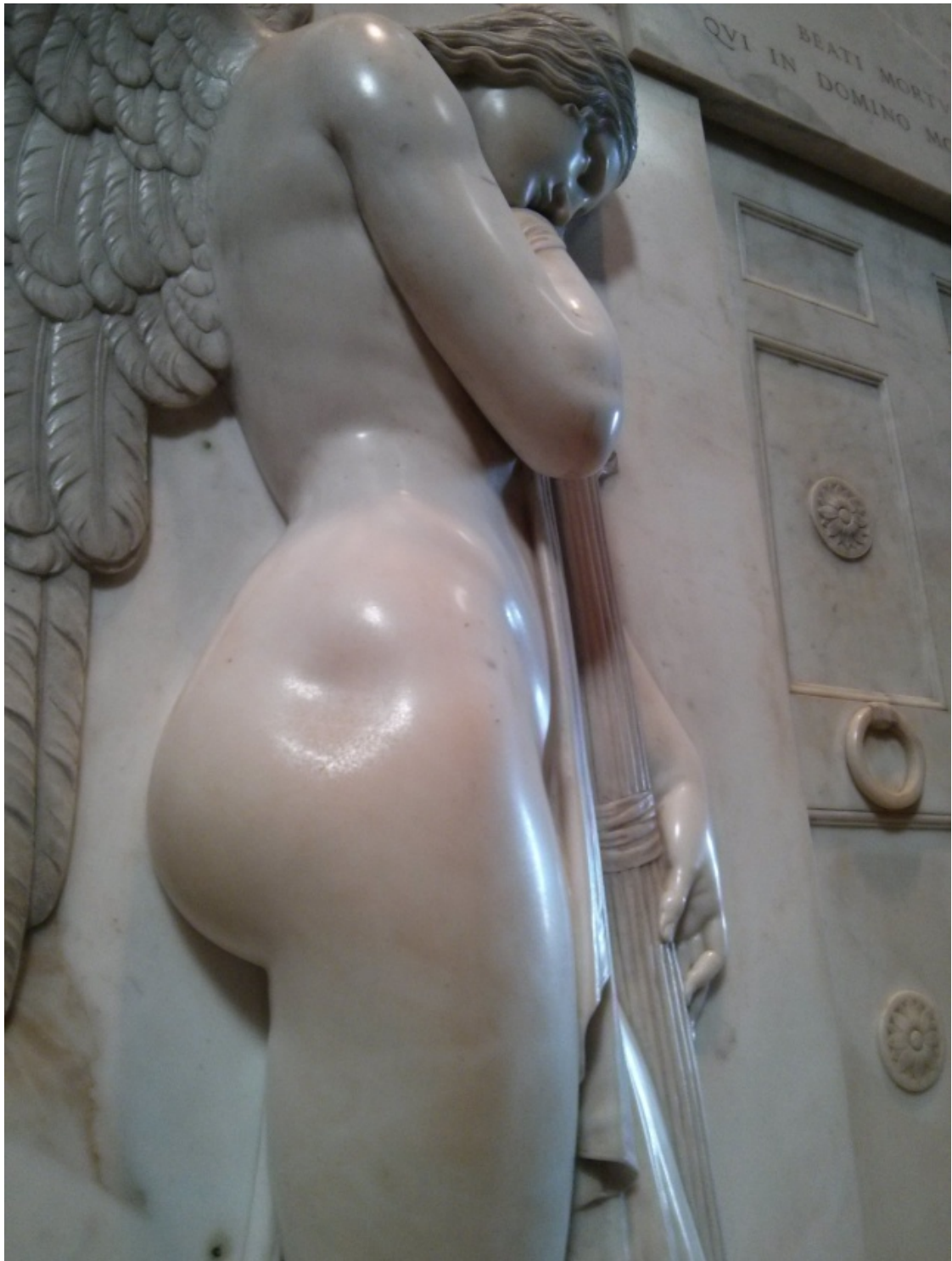


Figure 4.13: Lorenzo Valles, *Paulina Borghese in Antonio Canova's Studio*, (undated), 57.5 x 75cm, private collection





Figure 4.14: Antonio Canova, *Ferdinand IV with the Attributes of Minerva*, 1798-1820, Museo Nazionale, Naples





*Figure 4.15:* Sir Richard Westmacott, *The Achilles Monument to the Duke of Wellington*, 1822, 6m, Hyde Park, London



Figure 4.16: George Cruikshank, *Backside and Front View of the 'Ladies Fancy-Man'*, July 20th 1822, The British Museum, 1865, 1111.2120

