

Tennessee State University

Digital Scholarship @ Tennessee State University

Agricultural and Environmental Sciences
Faculty Research

Department of Agricultural and Environmental
Sciences

11-12-2018

Reduced carbon use efficiency and increased microbial turnover with soil warming

Jianwei Li
Tennessee State University

Gangsheng Wang
Oak Ridge National Laboratory

Melanie A. Mayes
Oak Ridge National Laboratory

Steven D. Allison
University of California, Irvine

Serita D. Frey
University of New Hampshire, Durham

See next page for additional authors

Follow this and additional works at: <https://digitalscholarship.tnstate.edu/agricultural-and-environmental-sciences-faculty>

 Part of the [Soil Science Commons](#)

Recommended Citation

Li, J, Wang, G, Mayes, MA, et al. Reduced carbon use efficiency and increased microbial turnover with soil warming. *Glob Change Biol.* 2019; 25: 900– 910. <https://doi.org/10.1111/gcb.14517>

This Article is brought to you for free and open access by the Department of Agricultural and Environmental Sciences at Digital Scholarship @ Tennessee State University. It has been accepted for inclusion in Agricultural and Environmental Sciences Faculty Research by an authorized administrator of Digital Scholarship @ Tennessee State University. For more information, please contact XGE@Tnstate.edu.

Authors

Jianwei Li, Gangsheng Wang, Melanie A. Mayes, Steven D. Allison, Serita D. Frey, Zheng Shi, Xiao-Ming Hu, Yiqi Luo, and Jerry M. Melillo

DR. JIANWEI LI (Orcid ID : 0000-0002-0429-3627)

DR. GANGSHENG WANG (Orcid ID : 0000-0002-8117-5034)

DR. STEVEN D ALLISON (Orcid ID : 0000-0003-4629-7842)

Article type : Primary Research Articles

Reduced carbon use efficiency and increased microbial turnover with soil warming

Running head: soil warming experiment and data assimilation

Jianwei Li¹, Gangsheng Wang^{2,3}, Melanie A. Mayes², Steven D. Allison^{4,5}, Serita D. Frey⁶,
Zheng Shi⁷, Xiao-Ming Hu⁷, Yiqi Luo⁸, Jerry M. Melillo⁹

1. Department of Agricultural and Environmental Sciences, Tennessee State University, Nashville, TN 37209, USA
2. Climate Change Science Institute and Environmental Sciences Division, Oak Ridge National Laboratory, Oak Ridge, TN 37831-6301, USA
3. Institute for Environmental Genomics and Department of Microbiology & Plant Biology, University of Oklahoma, Norman, Oklahoma, 73019, USA
4. Department of Ecology and Evolutionary Biology, University of California, Irvine, CA 92697, USA
5. Department of Earth System Science, University of California, Irvine, CA 92697, USA

This is the author manuscript accepted for publication and has undergone full peer review but has not been through the copyediting, typesetting, pagination and proofreading process, which may lead to differences between this version and the [Version of Record](#). Please cite this article as [doi: 10.1111/GCB.14517](https://doi.org/10.1111/GCB.14517)

This article is protected by copyright. All rights reserved

6. Department of Natural Resources and the Environment, University of New Hampshire, Durham, New Hampshire 03824, USA
7. Center for Analysis and Prediction of Storms, and School of Meteorology, University of Oklahoma, Norman, OK 73019, USA
8. Center for Ecosystem Science and Society, Department of Biological Sciences, Northern Arizona University, Flagstaff, AZ 86011, USA
9. The Ecosystem Center, Marine Biological Laboratory, Woods Hole, Massachusetts 02503, USA

Corresponding author

Jianwei Li

Department of Agriculture and Environmental Sciences

Tennessee State University

Nashville, TN 37209, USA

Phone: (615) 963-1523

Email: jli2@tnstate.edu

Key words: Harvard forest, soil warming, carbon use efficiency (*CUE*), microbial biomass turnover (*rB*), temperature sensitivity, data-model integration

Paper type: Primary Research Article

Notice: This manuscript has been authored by UT-Battelle, LLC under Contract No. DE-AC05-00OR22725 with the US Department of Energy. The United States Government retains and the publisher, by accepting the article for publication, acknowledges that the United States Government retains a non-exclusive, paid-up, irrevocable, world-wide license to publish or reproduce the published form of this manuscript, or allow others to do so, for United States Government purposes. The Department of Energy will provide public access to these results of federally sponsored research in accordance with the DOE Public Access Plan (<http://energy.gov/downloads/doe-public-access-plan>)

Abstract. Global soil carbon (C) stocks are expected to decline with warming, and changes in microbial processes are key to this projection. However, warming responses of critical microbial parameters such as carbon use efficiency (*CUE*) and biomass turnover (*rB*) are not

This article is protected by copyright. All rights reserved

well understood. Here, we determine these parameters using a probabilistic inversion approach that integrates a microbial-enzyme model with 22 years of carbon cycling measurements at Harvard Forest. We find that increasing temperature reduces *CUE* but increases *rB*, and that two decades of soil warming increases the temperature sensitivities of *CUE* and *rB*. These temperature sensitivities, which are derived from decades-long field observations, contrast with values obtained from short-term laboratory experiments. We also show that long-term soil C flux and pool changes in response to warming are more dependent on the temperature sensitivity of *CUE* than that of *rB*. Using the inversion-derived parameters, we project that chronic soil warming at Harvard Forest over six decades will result in soil C gain of <1.0% on average (1st and 3rd quartiles: 3.0% loss and 10.5% gain) in the surface mineral horizon. Our results demonstrate that estimates of temperature sensitivity of microbial *CUE* and *rB* can be obtained and evaluated rigorously by integrating multi-decadal datasets. This approach can potentially be applied in broader spatiotemporal scales to improve long-term projections of soil C feedbacks to climate warming.

INTRODUCTION

Integration of microbial processes into carbon (C) cycle models can potentially improve simulations of soil C dynamics under climate warming (Wieder et al. 2013, Luo et al. 2016). Uncertainty in long-term soil C responses to climate change will likely be reduced with more realistic and accurate parameterizations of key microbial processes that regulate soil C stocks and respiratory C losses (Todd-Brown et al. 2012, Wieder et al. 2015, Luo et al. 2016). These key parameters include carbon use efficiency (hereafter *CUE*), defined as the fraction of C uptake allocated to growth (Allison et al. 2010, Geyer et al. 2016), and microbial biomass turnover rate (hereafter *rB*), i.e. the fraction of microbial biomass that leaves the microbial pool per unit of time (Hagerty et al. 2014). These two parameters are critical for modeling soil C change with warming (Hagerty et al. 2014, Li et al. 2014) but remain poorly quantified (Manzoni et al. 2017, Sinsabaugh et al. 2017, Xu et al. 2017). It is also unclear whether heterotrophic microbes might acclimate to long-term warming through reductions in the temperature sensitivities of *CUE* and *rB* (Allison et al. 2010, Frey et al. 2013, Wieder et al. 2013).

Rising soil temperatures are generally expected to reduce *CUE*, as warming limits microbial growth by increasing the energy cost of maintaining existing biomass (Manzoni et al. 2012, Sinsabaugh et al. 2013). Observed *CUE* of soil microbial communities, however,

has shown variable responses to rising temperature including increases, decreases, or no response (Steinweg et al. 2008, Frey et al. 2013, Sinsabaugh et al. 2013, Li et al. 2018), due to fundamentally different pathways of C allocation in assimilation, enzyme production, and respiration for biomass maintenance and enzyme production (Hagerty et al. 2018). In addition, warming can enhance rB if the cell-specific microbial death rate outpaces cell production (Joergensen et al. 1990). Dead microbial cells can be metabolized by living microbes, incorporated into the soil organic carbon (SOC) pool, or protected from decomposition by physicochemical occlusion in soil particles (Six et al. 2002, Lehmann and Kleber 2015).

Quantifying CUE , rB , and their temperature responses remains a major challenge. There are no techniques available to measure these quantities *in situ*, so prior studies have relied mainly on laboratory incubations with isotopic tracers. For example, Hagerty et al. (2014) showed increased rB but constant CUE with warming in a week-long soil incubation. Still, it remains unclear how these key microbial variables respond to warming over decadal time scales that are more relevant to climate change (Frey et al. 2013, Geyer et al. 2016). Traditionally, a sole value of a model parameter can be determined via least squares fitting between model output and observation (Luo et al. 2011). Probabilistic inversion techniques use data to inform model parameters and produce most probable values and uncertainties of parameters (Clark 2005, Luo et al. 2011). Probabilistic inversion thus offers an alternative to the deterministic modeling approach and direct empirical measurement of key microbial parameters, particularly for those not well quantified due to technical difficulty. With an inversion approach, observational data are used to constrain the model. Parameter values are discounted if they result in model outputs inconsistent with the data (Clark 2005, Xu et al. 2006, Luo et al. 2011). Previously, such approaches have been applied successfully in many contexts, including terrestrial carbon cycling (Niu et al. 2014, Hararuk et al. 2015).

Here we used a probabilistic inversion approach (i.e., the Bayesian inference) to estimate the apparent temperature sensitivities (hereafter referred to as temperature sensitivities) of CUE and rB under field conditions. We assembled 14 datasets that were collected from soil warming experiments at the Harvard Forest Long-term Ecological Research (LTER) site in Petersham, MA, USA, where soil temperature has been continuously elevated to $\sim 5^{\circ}\text{C}$ above ambient for 10 to 26 years (Melillo et al. 2017). We used Bayesian probabilistic inversion to obtain the temperature sensitivity coefficients of CUE and rB by assimilating data into the Microbial-ENzyme Decomposition (MEND) model. MEND was chosen because it has been validated previously, and it represents relevant microbial

processes and mineral interactions without excessive complexity (Wang et al. 2013, Li et al. 2014). To analyze the effects of temperature-sensitive *CUE* and *rB* on long-term soil C dynamics, posterior parameter values and forcing data obtained from the control and heated plots were implemented in long-term projections of soil carbon and respiratory responses over six decades.

MATERIALS AND METHODS

Data compilation from Harvard Forest

We assembled multiple observational datasets collected from several experimental soil warming studies at the Harvard Forest Long-term Ecological Research (LTER) site in Petersham, MA, USA (42°50' N, 72°18' W). The list of data sources is presented in Table 1. The climate at Harvard Forest is cool, temperate and humid, with mean annual precipitation and mean annual air temperature of 1080 mm and 7.0 °C, respectively. Soils are of the Gloucester series (fine loamy, mixed, mesic, Typic Dystrachrepts) and dominant tree species are red oak (*Quercus rubra*) and red maple (*Acer rubrum*) (Peterjohn et al. 1993). Data span the period of 1989-2010 and were obtained from published articles or the Harvard Forest online data archive (<http://harvardforest.fas.harvard.edu/harvard-forest-data-archive>). Data were collected from three soil warming experiments initiated at three different times (1991, 2001, and 2006). Site and experimental design information is described in Peterjohn et al. (1993), Melillo et al. (2002), and Contosta et al. (2011).

Briefly, soils in heated plots were continuously warmed 5 °C above control plots using buried heating cables placed 10 cm below the soil surface and spaced 20 cm apart. Climate conditions, soil temperature and soil moisture were monitored continuously. Soil respiration was measured monthly between April and October. Datasets of soil temperature (Melillo et al. 1999, Arguez et al. 2010, Brzostek and Finzi 2011a), CO₂ efflux (Melillo et al. 1999), soil C (Nadelhoffer et al. 1990, Frey 2009), DOC (Compton et al. 2004, Bradford et al. 2008), MBC (Compton et al. 2004, Wallenstein et al. 2006, Frey et al. 2008), extracellular enzyme activity (EEA) (Brzostek and Finzi 2011a), and litterfall (Frey and Ollinger 1999), were also used for this modeling study.

Several assumptions were made to meet the requirements for MEND model input and the inversion analysis. Litter input C used for the model was assumed to be 48% of measured litter biomass (Schlesinger and Bernhardt 2013), and litter entered the SOC and DOC pool at a constant rate (i.e. 98% as particular organic carbon (POC) and 2% as DOC). SOC

concentrations were selected to represent the top 10-cm mineral soil depth (i.e. A horizon). Using an average value for specific enzyme activity (i.e. $\mu\text{mol min}^{-1} \text{mgC}^{-1}$) and a temperature normalization based on a measured Q_{10} value ($Q_{10}=2$) (Allison et al. 2018), extracellular enzyme data in each collection were converted to potential activity (i.e. $\mu\text{mol g}^{-1} \text{soil hr}^{-1}$) of labile substrate-acquiring enzymes (i.e. the sum of β -D-cellobiosidase, acid phosphatase, protease and β -1,4-N-Acetyl-glucosaminidase) and oxidase (i.e. the sum of peroxidase and phenol oxidase) that contribute to fast- and slow-cycling soil organic matter turnover, respectively. The sum of these potential activities is equivalent to the sum of enzyme activities for POC and mineral-associated organic carbon (MOC). Soil heterotrophic respiration was assumed to represent 67% of measured soil CO_2 efflux (Bowden et al. 1993, Sanderman 1998, Melillo et al. 2002). Daily soil temperature measurements at 4-cm depth (i.e. approximately at the middle of 10-cm soil depth) were available during 1991-2010 (Melillo et al. 1999).

We calculated hourly soil temperatures based on daily averages and the NCEP Climate Forecast System Reanalysis (CFSR) which provides hourly gridded soil temperature data at 5-cm soil depth (<http://rda.ucar.edu/datasets/ds093.1/index.html>). Scaled hourly variation of soil temperature at Harvard Forest from the CFSR data was added to the daily average station observation. A scaling factor, computed as the ratio of standard deviation of daily station observation to standard deviation of daily average CFSR data, was applied to the hourly variation of CFSR data. The daily station observation was derived from hourly observations in 2009 and 2010 (Brzostek and Finzi 2011a). The use of scaling factor is to account for the depth difference below the soil surface in the CFSR and station data. The available datasets are presented in Fig. S1.

Microbial-ENzyme Decomposition (MEND) model

MEND is a microbial ecosystem model that incorporates multiple soil and enzyme pools (Wang et al. 2013) and shows reasonable fit to soil C observations in response to perturbation (Li et al. 2014). The model structure is presented in Fig. S2, and the full list of governing equations can be found in Li et al. (2014). In MEND, the decomposition of particulate organic matter (POC) and mineral-associated organic matter (MOC), and the uptake of dissolved organic matter (DOC) are described by the Michaelis-Menten kinetics with a half-saturation constant (K) and maximum reaction rate (V). The kinetics parameters are temperature sensitive and represented by the Arrhenius equation (Wang et al. 2012). In

addition, the adsorption and desorption rates of DOC are also temperature dependent (Cornelissen et al. 1997, Wang et al. 2013). Following SOC decomposition and DOC uptake, C is lost through growth and maintenance respiration dependent on CUE . Note that the CUE parameter in MEND refers to the assimilation efficiency (Pirt 1965, Wang and Post 2012). Consistent with previous studies, the model assumes that carbon use efficiency (CUE , E_C) varies with temperature based on a linear relationship (Fieschko and Humphrey 1984, DeVêvre and Horwath 2000, Steinweg et al. 2008, Frey et al. 2013, Tucker et al. 2013):

$$E_C(T) = E_{C,ref} + m \times (T - T_{ref}) \quad (1)$$

where $E_C(T)$, $E_{C,ref}$, and m denote the CUE at simulation temperature T , the reference temperature (T_{ref}), and the slope parameter ($^{\circ}\text{C}^{-1}$), respectively.

In the model, microbial turnover rate (rB) also depends on temperature. The temperature sensitivity of the microbial turnover rate (n) is defined based on the following equation (Saggar et al. 1999, Malik et al. 2013, Hagerty et al. 2014):

$$rB(T) = rB_{ref} + n \times (T - T_{ref}) \quad (2)$$

where $rB(T)$, rB_{ref} , and n denote the rB at simulation temperature T (i.e., 5°C), the reference temperature (20°C), and the slope parameter ($\text{mg C mg}^{-1} \text{ C h}^{-1} \text{ }^{\circ}\text{C}^{-1}$), respectively.

Data-model integration via a probabilistic inversion analysis

We used a Bayesian probabilistic inversion technique to constrain five key model parameters and seven initial pool sizes under the control and heated conditions, respectively. These parameters include the CUE at the reference temperature ($E_{C,ref}$), the temperature sensitivity of CUE (m), the temperature sensitivity of the microbial turnover rate (n), the fraction of decomposed POC entering DOC (fD), and the fraction of dead microbes becoming DOC (gD), as well as seven initial pool sizes ($iPOC$, $iMOC$, $iQOC$, $iMBC$, $iDOC$, iEP and iEM ; Table 2). Default values of these and other model parameters are presented in Table S1.

Constructing the likelihood function -- According to the Bayes' theorem (Clark 2005), the posterior probability density function (PDF) $P(p|Z)$ of model parameters p can be estimated from the prior knowledge of parameters p (i.e., a prior PDF, $P(p)$) and the information contained in existing observations (i.e., a likelihood function $P(Z|p)$):

$$P(p|Z) \propto P(Z|p)P(p) \quad (4)$$

Assuming that errors between observed and modeled values follow Gaussian

distributions, the likelihood function $P(Z|p)$ can be expressed by:

$$P(Z|p) \propto \exp \left\{ - \sum_{i=1}^6 \sum_{t \in Z_i} \frac{[Z_i(t) - X_i(t)]^2}{2\sigma_i^2(t)} \right\} \quad (5)$$

where $Z(t)$ is measured value, $X(t)$ is model simulation, and σ is the standard deviation for each measurement. $i = 1, 2, \dots, 6$, represents the available observations of hourly CO₂ efflux, daily CO₂ efflux, SOC, DOC, MBC and ENC (i.e. the sum of EP and EM). We adopt the Gaussian assumption for mathematical convenience in the absence of more precise information about the data-model error structure (Feyen et al. 2003, Luo et al. 2003, Luo and Zhou 2010).

Prior knowledge -- The prior PDF $P(p)$ is specified by giving a set of limiting intervals for parameters p with uniform distribution. We set the prior range of m to (-0.017, 0.017) and the prior range of n to (-4e-5, 4e-5) to reflect the range of values observed in the literature (Table 2). Despite negative values revealed in previous experiments (Fig. S3), the positive values of m were included according to Sinsabaugh et al. (2017), in which the microbial *CUE* increased weakly with mean annual temperature. The prior ranges of the five parameters and seven initial pool sizes were determined based on published values and presented in Table 2.

Posterior probability density function -- The posterior PDFs were then generated from prior PDFs $P(p)$ with observations Z by a Markov chain Monte Carlo (MCMC) sampling technique, using the Metropolis-Hastings (M-H) algorithm as the MCMC sampler (Xu et al. 2006). Specifically, the M-H algorithm was run by repeating two steps: a proposing step and a moving step. In each proposing step, the algorithm generated a new point p^{new} for a parameter vector p based on the previously accepted point p^{old} with a proposed distribution $P(p^{new}|p^{old})$:

$$p^{new} = p^{old} + \theta(p_{max} - p_{min}) \quad (6)$$

where p_{max} and p_{min} are the maximum and minimum values within the *prior* range of the given parameter. θ is a random variable between -0.5 and 0.5 with a uniform distribution. In each moving step, point p^{new} was tested to determine whether it should be accepted or not.

Whether a new point p^{new} was accepted or not depends on the comparison of $R = \frac{P(p^{new}|Z)}{P(p^{old}|Z)}$

with a uniform random number U from 0 to 1. Only if $R \geq U$ is the new point accepted;

otherwise $p^{new}=p^{old}$.

Parameter selection and long-term projection

Five parallel runs of the MCMC algorithm started at dispersed initial points were conducted with each run iterated for 100,000 times. The acceptance rates for the newly generated samples were ~10% under control conditions and ~22% under heated conditions for each run, and all five runs passed the stability test prior to data analysis (Table S2). The initial samples (about 5000 and 11000 in the so called burn-in period) were discarded after the running means and standard deviations stabilized. The union of the samples of the five runs (about 25,000 and 55,000 samples in total) after their burn-in periods was used to derive and compare the posterior means and standard deviations of the target parameters for control and heated conditions. The model performance with inversion (i.e., calibration of parameters based on observations) and without inversion (i.e., relying on default parameterization) was compared based on model simulations given the default and posterior mean parameter values (R^2 presented). The means of posterior parameters (m , n) were compared based on the student-t test and the p -values were reported.

To examine effects of different CUE and rB parameterization on soil C stocks and CO_2 emissions as well as the associated uncertainties, the model was first run to reach equilibrium under constant forcing data (i.e. soil temperature and litterfall inputs averaged over 22 years under control conditions). Then, long-term model projections were conducted by running the model forward based on 3,000 pairs of m and n sampled from the inversion derived posterior distribution under both control and heated conditions. We simulated four different scenarios to analyze the consequences of variation in m and n . The four scenarios included no temperature sensitivities of CUE or rB ($m=0$; $n=0$; *Scenario I*), no temperature sensitivity of CUE but sampled posterior temperature sensitivity of rB ($m=0$; *varying n*; *Scenario II*), no temperature sensitivity of rB but sampled posterior temperature sensitivity of CUE ($n=0$; *varying m*; *Scenario III*), and sampled posterior temperature sensitivities of CUE and rB (*varying m* and n ; *Scenario IV*). In each scenario, model projections were conducted for 66 years which represents three repetitions of the original 22-year forcing data. The end-simulation SOC pool sizes and cumulative CO_2 emissions were obtained.

To further examine climate change effects on soil C stocks and CO_2 emissions, the model projections were also conducted under three different forcing conditions, i.e. 0°C increase in soil temperature (W0), 5°C increase in soil temperature (W5), and 5°C increase in

soil temperature in addition to 9.6% increase in litterfall input, a value derived from the litterfall input averaged over 22 years under heated conditions (W5L). The end-simulation SOC pool sizes and cumulative CO₂ emissions was calculated under W0, W5 or W5L for each scenario (I~IV). For each projection, the relative changes in SOC stock and CO₂ emission with climate warming (5°C) were calculated by comparisons between W5 and W0. Based on the 3,000 independent simulations, the means of relative changes were compared between treatments with control plot parameters and heated plot parameters based on the student-t test. A bar graph and a boxplot were also produced to display the mean, standard deviation, median, 1st and 3rd quartiles of these long-term projections.

RESULTS

Model performance

The accuracy of model simulations was significantly enhanced when parameters were estimated via our probabilistic inversion approach. For heterotrophic soil respiration, the coefficients of determination (R^2) increased from 0.26 without the inversion to 0.59 with inversion in the control soil, and from 0.14 without inversion to 0.75 with inversion in the heated soil (Fig. 1). The simulations of respiration, MBC, DOC, and SOC also better matched the observations using this inversion approach (Fig. S4). The posterior probability distributions of all target parameters in the inversion differed between the control and heated conditions (Figs. S5, S6).

Temperature sensitivity of microbial *CUE* and *rB*

The mean values of temperature sensitivity of *CUE* (i.e. the slope m) were -0.0101 °C⁻¹ under control conditions and -0.0117 °C⁻¹ under heated conditions, which differed significantly from each other ($P < 0.001$; Fig. 2). The standard deviation of m was 0.0052 in both cases. The absolute value of slope m was 15.1% greater under heated conditions than that under control conditions. Given the mean value of m and observed soil temperatures, the average *CUE* was estimated at 0.42 with a range of 0.25–0.67 in the control conditions, and the average was 0.39 with a range of 0.19–0.66 in the heated conditions (Fig. S7).

The mean values of temperature sensitivity of *rB* (i.e. the slope n) were $1.58e-5$ h⁻¹ °C⁻¹ (i.e., $3.80e-4$ d⁻¹ °C⁻¹) under control conditions and $1.66e-5$ h⁻¹ °C⁻¹ (i.e., $3.99e-4$ d⁻¹ °C⁻¹) under heated conditions, which differed significantly from each other (Fig. 2). The slope n was 5.0% greater under heated conditions than under control conditions.

Temperature sensitivities of microbial *CUE* and *rB* on long-term projections

The simulated trajectory of SOC stocks and CO₂ emissions with warming was influenced by the temperature sensitivities of *CUE* and *rB* (Fig. 3 and Fig. S8). Assuming control-plot derived parameters, no temperature sensitivity of either *CUE* or *rB*, and a +5°C temperature forcing, SOC stocks on average declined by 15.6%, and emissions of CO₂ increased by ~8.0% on average (blue bars, top and bottom panels in Fig. 3). With a temperature-sensitive (i.e., increasing) *rB* and a constant *CUE*, the results were nearly identical. With a temperature-sensitive (i.e., decreased) *CUE* and a constant *rB*, SOC stocks declined by ~2.1% and emissions of CO₂ increased by ~0.7% on average. When both *CUE* and *rB* were temperature sensitive, the results were very similar to when only *CUE* was temperature sensitive.

Assuming heated plot parameters, SOC and CO₂ trajectories under warming appeared significantly different from those under control plot parameters (compare red and blue bars in scenarios II, III and IV, $P < 0.001$, Fig. 3). When there was no *CUE* temperature sensitivity, the difference between treatments appeared minor (compare red and blue bars in scenario II, Fig. 3). However, increasing the *CUE* temperature sensitivity (i.e., heated plot parameters vs. control plot parameters) resulted in SOC gains of 0.5% and 0.9% on average, respectively, which contrasted with SOC reductions (compare red and blue bars in scenarios III and IV, Fig. 3). The variations of the projected end-simulation pool sizes and respiration are presented in Fig. S8. When the effects of experimental warming and temperature sensitivities of both parameters were combined, uncertainty in the SOC projection ranged from a 3.0% loss to a 10.5% gain for the 1st and 3rd quartiles, or from a 12.2% loss to a 13.6% gain for the 5% and 95% quantiles (i.e., scenario IV, Fig. S8). We also found that elevated litter inputs with warming did not substantially affect SOC stock changes (Table S3).

DISCUSSION

Warmer temperature reduced *CUE* but decades-long warming elevated *CUE* temperature sensitivity

Given the inversions conducted in both control and heated conditions, the negative slope m indicates that increasing temperature reduced microbial *CUE* in field experimental conditions, which is consistent with many studies based on laboratory experiments (Manzoni et al. 2012, Sinsabaugh et al. 2013). Previous observations also have suggested a wide range

of m from -0.017 to -0.003 $^{\circ}\text{C}^{-1}$ (DeVêvre and Horwáth 2000, Steinweg et al. 2008, Frey et al. 2013, Tucker et al. 2013), consistent with the negative effect of increasing temperature on maintenance energy observed in experiments with heterotrophic soil microbes (Crowther and Bradford 2013, Frey et al. 2013). Therefore soil warming, under either field or laboratory conditions, can generally lead to constraints on microbial metabolic activity due to greater energy cost for maintaining microbial biomass (del Giorgio and Cole 1998, Frey et al. 2013) or energy spilling (i.e., waste metabolism) (Bradford 2013).

We found no evidence that Harvard Forest microbes acclimate to warming by reducing the temperature sensitivity of CUE . The absence of microbial acclimation is consistent with a sustained increase in soil microbial activity in response to geothermal warming in a different study (Walker et al. 2018). Incubations with C-rich calcareous temperate forest soils subjected to 9 years of warming also showed no thermal adaptation of the microbial decomposer community (Schindlbacher et al. 2015). Based on our model inversion, CUE was more temperature sensitive with long-term soil warming (slope $m = -0.0101$ $^{\circ}\text{C}^{-1}$ for control plot vs. -0.0117 $^{\circ}\text{C}^{-1}$ for heated plot). Our results contrast with those of Frey et al. (2013) who found a decline in the temperature sensitivity of microbial CUE in Harvard Forest soils subjected to 18 years of warming. Although the reason for this discrepancy is uncertain, the temperature acclimation in Frey et al. (2013) was only observed for one of three added carbon substrates (i.e., phenol) in a laboratory assay and may not apply to the integrated CUE determined by our inversion analysis.

The greater temperature sensitivity of CUE under heated compared to control conditions could be driven by selection for microorganisms with higher maintenance costs (Frey et al. 2008, Zhou et al. 2012, DeAngelis et al. 2015). After 12 years of warming at Harvard Forest, relative abundances of fungal biomarkers declined whereas gram positive bacterial and actinobacterial biomarkers increased (Frey et al. 2008). Such community shifts may have overridden physiological acclimation of CUE within some microbial species (Allison 2014, DeAngelis et al. 2015, Melillo et al. 2017).

The inversion-derived averages (0.39 and 0.42 for the control and warming plots) and range of CUE (0.19–0.67) are similar to values reported previously for Harvard Forest soils subject to 2- and 18-year warming treatments (Frey et al. 2013) and also comparable to the average values (i.e. 0.3) observed in soils and aquatic ecosystems (Sinsabaugh et al. 2013). The inversion-derived maximal CUE value (0.67) is close to the thermodynamic efficiency of aerobic microbial growth (Roels 2009). However, the inversion-derived average and range

are much lower than 0.72–0.74, the values reported from a week-long lab incubation study with ^{13}C -labelled glucose in a forest soil (Hagerty et al. 2014), or 0.7–0.8 reported in a month-long incubation study with cellobiose amendment in a cropland soil (Steinweg et al. 2008).

The lower value of *CUE* determined here suggests that the active microbial community functions at low biochemical efficiency under field conditions, implying that microorganisms with relatively high maintenance costs dominate in field soils. Low *CUE* may also indicate reduced availability of labile substrates as energy sources (Knorr et al. 2005) or dominance of recalcitrant organic compounds in SOC (Frey et al. 2013). On the other hand, the higher value of measured *CUE* in incubation studies could be due to short measurement periods of hours to weeks; longer incubations yield lower effective *CUE* values (Hagerty et al. 2018).

The isotopic probing approach via ^{13}C -labelled substrate amendment used to quantify *CUE* in these incubation studies (Steinweg et al. 2008, Hagerty et al. 2014) may also have led to an overestimation of *CUE*. In short-term incubation studies, the re-use of ^{13}C in microbial necromass and microbial preference for ^{12}C for respiration could result in a relatively ^{13}C -enriched microbial biomass pool and relatively ^{13}C -depleted respiration, which were used to derive *CUE*. Furthermore, some *CUE* values (~0.8) reported for agricultural soils (Steinweg et al. 2008) exceeded the formerly reported maximal carbon conservation efficiency for microbial growth (Roels 2009), potentially due to more efficient C uptake induced by the labile substrate addition in agricultural soils.

Warmer temperature accelerated turnover and decades-long warming increased *rB* temperature sensitivity

Given the inversion results in this study, the positive slope *n* indicates that microbial turnover was faster with higher temperatures, which may be attributed to a shift in microbial community physiology, stimulated viral activity, and/or accelerated senescence of microbial cells (Joergensen et al. 1990). The same mechanisms may also explain the increased temperature sensitivity of turnover with warming (i.e., +5°C) over decades.

This slope *n* is $3.80\text{--}3.99\text{e-}4 \text{ d}^{-1} \text{ }^{\circ}\text{C}^{-1}$ under control and heated conditions, which is about one order of magnitude lower than the value of $0.003\text{--}0.004 \text{ d}^{-1} \text{ }^{\circ}\text{C}^{-1}$ derived from the one-week lab incubation experiment described previously (Hagerty et al. 2014). Given the mean value of *n* and observed soil temperatures in our inversion study, *rB* derived at 20°C is

only half the value observed at the same temperature in the one-week laboratory study (Hagerty et al. 2014).

These comparisons marked a major difference in the microbial biomass turnover rate estimated over time scales of days vs. decades. We speculate that given little change in microbial biomass, the high biomass turnover rate with warming over the short term may be driven by stronger microbial competition, thus leading to greater cell death (Kakumanu et al. 2013), greater formation of necromass (Crowther et al. 2015) and higher extracellular enzyme activities (Blankinship et al. 2014). Furthermore, the metabolic tracer probing method used in the short-term laboratory experiment can potentially overestimate the biomass turnover rate (Dijkstra et al. 2011). Temperature sensitivities of microbial biomass turnover that were one order of magnitude lower in our study may be associated with widespread microbial dormancy through which microbes acclimate to stress and reduce mortality (Lennon and Jones 2011).

Elevated temperature sensitivity of *CUE* reduced long-term soil C losses

The 66-year simulation results indicated that *rB* had minimal effects, but that *CUE* was important in determining CO₂ emissions and SOC stocks. Mechanistically speaking, the lower *CUE* at higher temperature resulted in fewer resources allocated to microbial biomass and associated enzyme pools given a constant uptake. These changes might reduce the decomposition rate (Li et al. 2014), thereby diminishing both SOC loss and CO₂ emissions.

A recent report indicates that 26 years of soil warming at the Harvard Forest resulted in a loss of about 8-17% of SOC in the upper 60cm of the soil (Melillo et al. 2017). Given the 12.2% loss to a 13.6% gain (5% and 95% quantiles) in SOC over six decades revealed in the inversion analysis, the MEND model may underestimate potential SOC losses from the full soil profile under warming, even when parameterized through an inversion approach with Harvard Forest data. Future incorporation of SOC stock changes into the model inversion would be useful for improving estimates of parameters, particularly *m* (*CUE* temperature sensitivity) which showed a broad distribution (Fig. 2). Our results suggest that lower magnitudes of *m* could result in MEND simulations more consistent with observed SOC losses under warming (Fig. 3).

Implications for soil warming experiments and data assimilation

Using Bayesian inversion approaches to combine emerging biogeochemical datasets with more advanced models should help improve confidence in predictions of carbon-climate feedbacks. Our inversion approach offered a tractable means of parameterizing the long-term response of *CUE* and turnover rate sensitivity to temperature based on available data. Still, we emphasize that our results could change as additional data, mechanisms, and feedbacks are incorporated into models like MEND. More soil C and microbial biomass measurements over years to decades would likely have substantially reduced the uncertainty of our parameter estimates. Furthermore, the MEND model used in this study lacks potentially important details about microbial community structure, moisture responses, and climate-driven feedbacks with the vegetation community that should be considered in future modeling efforts. To address potential experimental artefacts, future inversion analyses should also consider incorporating disturbance controls (i.e., heating cables installed but not turned on) if such data are available from field experiments.

We conclude that both *CUE* and microbial turnover are key parameters moderating SOC stocks and respiratory C losses at higher temperatures, but their inferred temperature sensitivities differ substantially depending on experimental duration and measurement approaches. Our simulations confirm that these parameters influence the decadal-scale predictions of SOC stock and CO₂ emission changes with warming. In particular, the temperature sensitivity of *CUE* induced a more pronounced effect on soil C dynamics than that of microbial turnover. Further, we did not find evidence that acclimation of microbial *CUE* or *rB* is likely to affect soil dynamics under warming. Our method could be applied to the increasing number of datasets on soil C cycle responses to perturbation at annual to decadal time scales, thereby incorporating key microbial functions into global ecosystem models and improving long-term projections of soil C changes and CO₂ emissions under environmental and climate changes.

ACKNOWLEDGEMENTS

JWL and GSW contributed equally to the work. This study was financially supported by a USDA Evans Allen grant (No. 1005761) and the US DOE Visiting Faculty Program (VFP) grant, both awarded to JWL. The US Department of Energy (DOE) Office of Biological and Environmental Research (BER) Terrestrial Ecosystem Science (TES) Program provided funding for MAM and GSW through Oak Ridge National Laboratory's (ORNL) TES Science Focus Area, and SDA through grant number DESC0014374. ORNL is managed by the

University of Tennessee-Battelle, LLC, under contract DE-AC05-00OR22725 with the US DOE. Grant support for the initiation and maintenance of the soil warming experiments at Harvard Forest has been provided to JMM and SDF through the DOE - DE-SC0010740; DE-SC0016590; DE-FC02-06ER64157; and the National Science Foundation - DEB 1237491 (LTER); DEB 1456528 (LTREB); DEB-0447967 (CAREER). We appreciate the anonymous reviewers for their constructive and insightful comments and suggestions.

CONFLICT OF INTEREST

The authors declare no conflict of interest.

References

- Allison, S. D. 2014. Modeling adaptation of carbon use efficiency in microbial communities. *Frontiers in Microbiology* **5**:571.
- Allison, S. D., A. L. Romero-Olivares, L. Lu, J. W. Taylor, and K. K. Treseder. 2018. Temperature acclimation and adaptation of enzyme physiology in *Neurospora discreta*. *Fungal Ecology* **35**:78-86.
- Allison, S. D., M. D. Wallenstein, and M. A. Bradford. 2010. Soil-carbon response to warming dependent on microbial physiology. *Nature Geoscience* **3**:336-340.
- Arguez, A., I. Durre, S. Applequist, M. Squires, R. Vose, X. Yin, and B. Rocky. 2010. NOAA's U.S. Climate Normals (1981-2010). [1989-1990]. NOAA National Centers for Environmental Information. DOI:10.7289/V5PN93JP[11-01-2015].
- Blankinship, J. C., C. A. Becerra, S. M. Schaeffer, and J. P. Schimel. 2014. Separating cellular metabolism from exoenzyme activity in soil organic matter decomposition. *Soil Biology and Biochemistry* **71**:68-75.
- Bowden, R. D., K. J. Nadelhoffer, R. D. Boone, J. M. Melillo, and J. B. Garrison. 1993. Contributions of aboveground litter, belowground litter, and root respiration to total soil respiration in a temperate mixed hardwood forest. *Canadian Journal of Forest Research* **23**:1402-1407.
- Bradford, M. A. 2013. Thermal adaptation of decomposer communities in warming soils. *Frontiers in Microbiology* **4**:333.
- Bradford, M. A., C. A. Davies, S. D. Frey, T. R. Maddox, J. M. Melillo, J. E. Mohan, J. F. Reynolds, K. K. Treseder, and M. D. Wallenstein. 2008. Thermal adaptation of soil microbial respiration to elevated temperature. *Ecol Lett* **11**:1316-1327.
- Brzostek, E., and A. Finzi. 2011a. Proteolytic Enzyme Activity in Temperate Forest Soils at Harvard Forest and Pisgah State Forest 2007-2010. Harvard Forest Data Archive: HF180. .

- Brzostek, E. R., and A. C. Finzi. 2011b. Substrate supply, fine roots, and temperature control proteolytic enzyme activity in temperate forest soils. *Ecology* **92**:892-902.
- Clark, J. S. 2005. Why environmental scientists are becoming Bayesians. *Ecology Letters* **8**:2-14.
- Compton, J. E., L. S. Watrud, L. Arlene Porteous, and S. DeGroot. 2004. Response of soil microbial biomass and community composition to chronic nitrogen additions at Harvard forest. *Forest Ecology and Management* **196**:143-158.
- Contosta, A. R., S. D. Frey, and A. B. Cooper. 2011. Seasonal dynamics of soil respiration and N mineralization in chronically warmed and fertilized soils. *Ecosphere* **2**.
- Contosta, A. R., S. D. Frey, S. V. Ollinger, and A. B. Cooper. 2013. Soil respiration does not acclimatize to warmer temperatures when modeled over seasonal timescales. *Biogeochemistry* **112**:555-570.
- Cornelissen, G., P. C. M. VanNoort, J. R. Parsons, and H. A. J. Govers. 1997. Temperature dependence of slow adsorption and desorption kinetics of organic compounds in sediments. *Environmental Science & Technology* **31**:454-460.
- Crowther, T. W., and M. A. Bradford. 2013. Thermal acclimation in widespread heterotrophic soil microbes. *Ecology Letters* **16**:469-477.
- Crowther, T. W., N. W. Sokol, E. E. Oldfield, D. S. Maynard, S. M. Thomas, and M. A. Bradford. 2015. Environmental stress response limits microbial necromass contributions to soil organic carbon. *Soil Biology & Biochemistry* **85**:153-161.
- DeAngelis, K. M., G. Pold, B. D. Topcuoglu, L. T. A. van Diepen, R. M. Varney, J. L. Blanchard, J. Melillo, and S. D. Frey. 2015. Long-term forest soil warming alters microbial communities in temperate forest soils. *Frontiers in Microbiology* **6**.
- del Giorgio, P. A., and J. J. Cole. 1998. Bacterial growth efficiency in natural aquatic systems. *Annual Review of Ecology and Systematics* **29**:503-541.
- DeVèvre, O. C., and W. R. Horwath. 2000. Decomposition of rice straw and microbial carbon use efficiency under different soil temperatures and moistures. *Soil Biology & Biochemistry* **32**:1773-1785.
- Dijkstra, P., J. J. Dalder, P. C. Selmants, S. C. Hart, G. W. Koch, E. Schwartz, and B. A. Hungate. 2011. Modeling soil metabolic processes using isotopologue pairs of position-specific C-13-labeled glucose and pyruvate. *Soil Biology & Biochemistry* **43**:1848-1857.
- Feyen, L., J. J. Gomez-Hernandez, P. J. Ribeiro, K. J. Beven, and F. De Smedt. 2003. A Bayesian approach to stochastic capture zone delineation incorporating tracer arrival times, conductivity measurements, and hydraulic head observations. *Water Resources Research* **39**.

- Fieschko, J., and A. E. Humphrey. 1984. Statistical analysis in the estimation of maintenance and true growth yield coefficients. *Biotechnology and Bioengineering* **26**:394-396.
- Frey, S. 2009. Soil Warming Plus Nitrogen Addition Experiment at Harvard Forest since 2006. Harvard Forest Data Archive: HF045.
- Frey, S., and S. Ollinger. 1999. Chronic Nitrogen Amendment Experiment at Harvard Forest since 1988. Harvard Forest Data Archive: HF008.
- Frey, S. D., R. Drijber, H. Smith, and J. Melillo. 2008. Microbial biomass, functional capacity, and community structure after 12 years of soil warming. *Soil Biology & Biochemistry* **40**:2904-2907.
- Frey, S. D., J. Lee, J. M. Melillo, and J. Six. 2013. The temperature response of soil microbial efficiency and its feedback to climate. *Nature Climate Change* **3**:395-398.
- Geyer, K. M., E. Kyker-Snowman, A. S. Grandy, and S. D. Frey. 2016. Microbial carbon use efficiency: accounting for population, community, and ecosystem-scale controls over the fate of metabolized organic matter. *Biogeochemistry* **127**:173-188.
- Gregorich, E. G., B. C. Liang, C. F. Drury, A. F. Mackenzie, and W. B. McGill. 2000. Elucidation of the source and turnover of water soluble and microbial biomass carbon in agricultural soils. *Soil Biology & Biochemistry* **32**:581-587.
- Gregorich, E. G., R. P. Voroney, and R. G. Kachanoski. 1991. Turnover of carbon through the microbial biomass in soils with different texture. *Soil Biology and Biochemistry* **23**:799-805.
- Hagerty, S. B., S. D. Allison., and J. P. Schimel. 2018. Evaluating soil microbial carbon use efficiency explicitly as a function of cellular processes: implications for measurements and models. *Biogeochemistry*. **In Press**.
- Hagerty, S. B., K. J. van Groenigen, S. D. Allison, B. A. Hungate, E. Schwartz, G. W. Koch, R. K. Kolka, and P. Dijkstra. 2014. Accelerated microbial turnover but constant growth efficiency with warming in soil. *Nature Clim. Change* **4**:903-906.
- Hararuk, O., M. J. Smith, and Y. Luo. 2015. Microbial models with data - driven parameters predict stronger soil carbon responses to climate change. *Global Change Biology* **21**:2439-2453.
- Joergensen, R. G., P. C. Brookes, and D. S. Jenkinson. 1990. Survival of the soil microbial biomass at elevated temperatures. *Soil Biology and Biochemistry* **22**:1129-1136.
- Kakumanu, M. L., C. L. Cantrell, and M. A. Williams. 2013. Microbial community response to varying magnitudes of desiccation in soil: A test of the osmolyte accumulation hypothesis. *Soil Biology & Biochemistry* **57**:644-653.
- Knorr, W., I. C. Prentice, J. I. House, and E. A. Holland. 2005. Long-term sensitivity of soil carbon turnover to warming. *Nature* **433**:298-301.

- Lehmann, J., and M. Kleber. 2015. The contentious nature of soil organic matter. *Nature* **528**:60-68.
- Lennon, J. T., and S. E. Jones. 2011. Microbial seed banks: the ecological and evolutionary implications of dormancy. *Nature Reviews Microbiology* **9**:119-130.
- Li, J., S. Jian, J. P. Koff, C. S. Lane, G. Wang, M. A. Mayes, and D. Hui. 2018. Differential effects of warming and nitrogen fertilization on soil respiration and microbial dynamics in switchgrass croplands. *GCB Bioenergy* **10**:565-576.
- Li, J., G. Wang, S. Allison, M. Mayes, and Y. Luo. 2014. Soil carbon sensitivity to temperature and carbon use efficiency compared across microbial-ecosystem models of varying complexity. *Biogeochemistry* **119**:67-84.
- Luo, Y. Q., A. Ahlstrom, S. D. Allison, N. H. Batjes, V. Brovkin, N. Carvalhais, A. Chappell, P. Ciais, E. A. Davidson, A. C. Finzi, K. Georgiou, B. Guenet, O. Hararuk, J. W. Harden, Y. J. He, F. Hopkins, L. F. Jiang, C. Koven, R. B. Jackson, C. D. Jones, M. J. Lara, J. Y. Liang, A. D. McGuire, W. Parton, C. H. Peng, J. T. Randerson, A. Salazar, C. A. Sierra, M. J. Smith, H. Q. Tian, K. E. O. Todd-Brown, M. Torn, K. J. van Groenigen, Y. P. Wang, T. O. West, Y. X. Wei, W. R. Wieder, J. Y. Xia, X. Xu, X. F. Xu, and T. Zhou. 2016. Toward more realistic projections of soil carbon dynamics by Earth system models. *Global Biogeochemical Cycles* **30**:40-56.
- Luo, Y. Q., K. Ogle, C. Tucker, S. F. Fei, C. Gao, S. LaDeau, J. S. Clark, and D. S. Schimel. 2011. Ecological forecasting and data assimilation in a data-rich era. *Ecological Applications* **21**:1429-1442.
- Luo, Y. Q., L. W. White, J. G. Canadell, E. H. DeLucia, D. S. Ellsworth, A. Finzi, J. Lichter, and W. H. Schlesinger. 2003. Sustainability of terrestrial carbon sequestration: A case study in Duke Forest with inversion approach. *Global Biogeochemical Cycles* **17**:-.
- Luo, Y. Q., and X. H. Zhou. 2010. Deconvolution analysis to quantify autotrophic and heterotrophic respiration and their temperature sensitivities. *New Phytologist* **188**:11-11.
- Malik, A., E. Blagodatskaya, and G. Gleixner. 2013. Soil microbial carbon turnover decreases with increasing molecular size. *Soil Biology & Biochemistry* **62**:115-118.
- Manzoni, S., P. Capek, M. Mooshammer, B. D. Lindahl, A. Richter, and H. Santruckova. 2017. Optimal metabolic regulation along resource stoichiometry gradients. *Ecology Letters* **20**:1182-1191.
- Manzoni, S., P. Taylor, A. Richter, A. Porporato, and G. I. Agren. 2012. Environmental and stoichiometric controls on microbial carbon-use efficiency in soils. *New Phytologist* **196**:79-91.
- Melillo, J., P. Steudler, and J. Mohan. 1999. Prospect Hill Soil Warming Experiment at Harvard Forest since 1991. Harvard Forest Data Archive: HF005.

- Melillo, J., P. Steudler, and J. Mohan. 2013. Barre Woods Soil Warming Experiment at Harvard Forest since 2001. Harvard Forest Data Archive: HF018.
- Melillo, J. M., S. D. Frey, K. M. DeAngelis, W. J. Werner, M. J. Bernard, F. P. Bowles, G. Pold, M. A. Knorr, and A. S. Grandy. 2017. Long-term pattern and magnitude of soil carbon feedback to the climate system in a warming world. *Science* **358**:101-105.
- Melillo, J. M., P. A. Steudler, J. D. Aber, K. Newkirk, H. Lux, F. P. Bowles, C. Catricala, A. Magill, T. Ahrens, and S. Morrisseau. 2002. Soil warming and carbon-cycle feedbacks to the climate system. *Science* **298**:2173-2176.
- Nadelhoffer, K., R. Boone, and R. Bowden. 1990. DIRT Litter Manipulation Experiment at Harvard Forest since 1990. Harvard Forest Data Archive: HF007.
- Nadelhoffer, K., R. Boone, and R. Bowden. 1999. DIRT Litter Manipulation Experiment at Harvard Forest since 1990. Harvard Forest Data Archive: HF007.
- Niu, S., Y. Luo, M. C. Dietze, T. F. Keenan, Z. Shi, J. Li, and F. S. C. Iii. 2014. The role of data assimilation in predictive ecology. *Ecosphere* **5**:art65.
- Peterjohn, W. T., J. M. Melillo, F. P. Bowles, and P. A. Steudler. 1993. Soil Warming and Trace Gas Fluxes - Experimental-Design and Preliminary Flux Results. *Oecologia* **93**:18-24.
- Pietikainen, J., M. Pettersson, and E. Baath. 2005. Comparison of temperature effects on soil respiration and bacterial and fungal growth rates. *FEMS Microbiology Ecology* **52**:49-58.
- Pirt, S. 1965. Maintenance energy of bacteria in growing cultures. . *Proceedings of the Royal Society of London Series B-Biological Sciences* **163**:224-231.
- Roels, J. A. 2009. Application of Macroscopic Principles to Microbial Metabolism (Reprinted from *Biotechnology and Bioengineering*, vol 22, pg 2457-2514, 1980). *Biotechnology and Bioengineering* **103**:2-59.
- Saggar, S., P. D. McIntosh, C. B. Hedley, and H. Knicker. 1999. Changes in soil microbial biomass, metabolic quotient, and organic matter turnover under *Hieracium* (*H. pilosella* L.). *Biology and Fertility of Soils* **30**:232-238.
- Sanderman, J. 1998. The effects of elevated soil temperatures on root and microbial respiration in a mixed hardwood forest. Undergraduate thesis. Brown University.
- Schindlbacher, A., J. Schneckler, M. Takriti, W. Borken, and W. Wanek. 2015. Microbial physiology and soil CO₂ efflux after 9 years of soil warming in a temperate forest - no indications for thermal adaptations. *Global Change Biology* **21**:4265-4277.
- Schlesinger, W. H., and E. S. Bernhardt. 2013. Chapter 5 - The Biosphere: The Carbon Cycle of Terrestrial Ecosystems. Pages 135-172 in W. H. S. E. S. Bernhardt, editor. *Biogeochemistry* (Third Edition). Academic Press, Boston.

- Sinsabaugh, R. L., S. Manzoni, D. L. Moorhead, and A. Richter. 2013. Carbon use efficiency of microbial communities: stoichiometry, methodology and modelling. *Ecol Lett* **16**:930-939.
- Sinsabaugh, R. L., D. L. Moorhead, X. F. Xu, and M. E. Litvak. 2017. Plant, microbial and ecosystem carbon use efficiencies interact to stabilize microbial growth as a fraction of gross primary production. *New Phytologist* **214**:1518-1526.
- Sinsabaugh, R. L., B. L. Turner, J. M. Talbot, B. G. Waring, J. S. Powers, C. R. Kuske, D. L. Moorhead, and J. J. Follstad Shah. 2016. Stoichiometry of microbial carbon use efficiency in soils. *Ecological Monographs* **86**:172-189.
- Six, J., R. T. Conant, E. A. Paul, and K. Paustian. 2002. Stabilization mechanisms of soil organic matter: Implications for C-saturation of soils. *Plant and Soil* **241**:155-176.
- Steinweg, J. M., A. F. Plante, R. T. Conant, E. A. Paul, and D. L. Tanaka. 2008. Patterns of substrate utilization during long-term incubations at different temperatures. *Soil Biology and Biochemistry* **40**:2722-2728.
- Todd-Brown, K. E. O., F. M. Hopkins, S. N. Kivlin, J. M. Talbot, and S. D. Allison. 2012. A framework for representing microbial decomposition in coupled climate models. *Biogeochemistry* **109**:19-33.
- Tucker, C. L., J. Bell, E. Pendall, and K. Ogle. 2013. Does declining carbon-use efficiency explain thermal acclimation of soil respiration with warming? *Global Change Biology* **19**:252-263.
- Walker, T. W. N., C. Kaiser, F. Strasser, C. W. Herbold, N. I. W. Leblans, D. Woebken, I. A. Janssens, B. D. Sigurdsson, and A. Richter. 2018. Microbial temperature sensitivity and biomass change explain soil carbon loss with warming. *Nature Climate Change* **8**:885-889.
- Wallenstein, M. D., S. McNulty, I. J. Fernandez, J. Boggs, and W. H. Schlesinger. 2006. Nitrogen fertilization decreases forest soil fungal and bacterial biomass in three long-term experiments. *Forest Ecology and Management* **222**:459-468.
- Wang, G., and W. M. Post. 2012. A theoretical reassessment of microbial maintenance and implications for microbial ecology modeling. *FEMS Microbiology Ecology* **81**:610-617.
- Wang, G., W. M. Post, M. A. Mayes, J. T. Frerichs, and J. Sindhu. 2012. Parameter estimation for models of ligninolytic and cellulolytic enzyme kinetics. *Soil Biology and Biochemistry* **48**:28-38.
- Wang, G. S., W. M. Post, and M. A. Mayes. 2013. Development of microbial-enzyme-mediated decomposition model parameters through steady-state and dynamic analyses. *Ecological Applications* **23**:255-272.
- Wieder, W. R., S. D. Allison, E. A. Davidson, K. Georgiou, O. Hararuk, Y. J. He, F. Hopkins, Y. Q. Luo, M. J. Smith, B. Sulman, K. Todd-Brown, Y. P. Wang, J. Y. Xia, and X. F. Xu. 2015. Explicitly

representing soil microbial processes in Earth system models. *Global Biogeochemical Cycles* **29**:1782-1800.

Wieder, W. R., G. B. Bonan, and S. D. Allison. 2013. Global soil carbon projections are improved by modelling microbial processes. *Nature Climate Change* **3**:909-912.

Xu, T., L. White, D. F. Hui, and Y. Q. Luo. 2006. Probabilistic inversion of a terrestrial ecosystem model: Analysis of uncertainty in parameter estimation and model prediction. *Global Biogeochemical Cycles* **20**.

Xu, X., J. P. Schimel, I. A. Janssens, X. Song, C. Song, G. Yu, R. L. Sinsabaugh, D. Tang, X. Zhang, and P. E. Thornton. 2017. Global pattern and controls of soil microbial metabolic quotient. *Ecological Monographs* **87**:429-441.

Zhou, J. Z., K. Xue, J. P. Xie, Y. Deng, L. Y. Wu, X. H. Cheng, S. F. Fei, S. P. Deng, Z. L. He, J. D. Van Nostrand, and Y. Q. Luo. 2012. Microbial mediation of carbon-cycle feedbacks to climate warming. *Nature Climate Change* **2**:106-110.

Author Manuscript

Table 1. Datasets and their sources collected from the soil warming experiments at Harvard Forest Long-term Ecological Research (LTER) site, Massachusetts, USA.

No.	Variable	Frequency	Measurement period	References
1	Litterfall	Yearly	1989-2010	(Frey and Ollinger 1999)
2	Litterfall	Yearly	2001-2013	(Melillo et al. 2013)
3	Soil CO ₂ efflux	Hourly, consecutive	1991-2010	(Melillo et al. 1999, Contosta et al. 2013)
4	SOC	certain days	1990, 1991, 1995, 2000	(Nadelhoffer et al. 1999)
5	DOC	certain days	1999, 2000, 2001	(Compton et al. 2004)
6	DOC	certain days	2005, 2006	(Bradford et al. 2008)
7	MBC	certain days	1999, 2000, 2001	(Compton et al. 2004)
8	MBC	certain days	2002	(Wallenstein et al. 2006)
9	MBC	certain days	2002	(Frey et al. 2008)
10	MBC	certain days	2005, 2006	(Bradford et al. 2008)
11	EEA	certain days	2008, 2009, 2010	(Brzostek and Finzi 2011b)
12	Soil temperature	Daily, consecutive	1991-2010	(Melillo et al. 1999)
13	Soil temperature	Hourly, consecutive	2009-2010	(Brzostek and Finzi 2011b)
14	Soil temperature	Hourly, consecutive	1989-1990	(Arguez et al. 2010)

SOC: soil organic carbon; DOC: dissolved organic carbon; MBC: microbial biomass carbon; EEA: extracellular enzyme activity.

Table 2. Parameters and their prior ranges included under control and heated conditions in the probabilistic inversion analysis.

Parameter	Description	Unit	Lower limit	Upper limit	Reference
$E_{C, ref}$	CUE at reference temperature	mg C mg ⁻¹ C	0	0.72	(Manzoni et al. 2012, Sinsabaugh et al. 2013)
m	Temperature sensitivity of CUE	mg C mg ⁻¹ C °C ⁻¹	-0.017	0.017	See Fig. S3; (Sinsabaugh et al. 2016, Sinsabaugh et al. 2017)
n	Temperature sensitivity of rB	mg C mg ⁻¹ C h ⁻¹ °C ⁻¹	-4e-5	4e-5	(Gregorich et al. 1991, Gregorich et al. 2000)
fD	Fraction of decomposed POC allocated to DOC	-	0.3	0.7	(Wang et al. 2012, Wang et al. 2013)
gD	Fraction of dead MBC transferred to SOC	-	0.3	0.7	(Pietikainen et al. 2005)
$iPOC$	Initial pool size of POC	mg C g ⁻¹ soil	1	23	(Nadelhoffer et al. 1999)
$iMOC$	Initial pool size of MOC	mg C g ⁻¹ soil	30	55	(Nadelhoffer et al. 1999)
$iQOC$	Initial pool size of QOC	mg C g ⁻¹ soil	0.1	1.9	(Nadelhoffer et al. 1999)
$iMBC$	Initial pool size of MBC	mg C g ⁻¹ soil	0.02	0.9	(Frey et al. 2008)
$iDOC$	Initial pool size of DOC	mg C g ⁻¹ soil	0.02	0.9	(Compton et al. 2004)
iEP	Initial pool size of EP	mg C g ⁻¹ soil	0.0001	0.007	(Brzostek and Finzi 2011a)
iEM	Initial pool size of EM	mg C g ⁻¹ soil	0.0001	0.007	(Brzostek and Finzi 2011a)

POC: particulate OC; MOC: mineral-associated OC; QOC: DOC associated with mineral surface; EP: enzymes for decomposition of POC; EM: enzymes for decomposition of MOC.

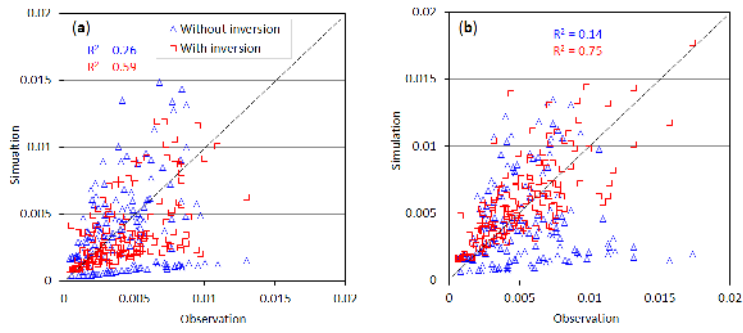
Author Manuscript

Figure captions

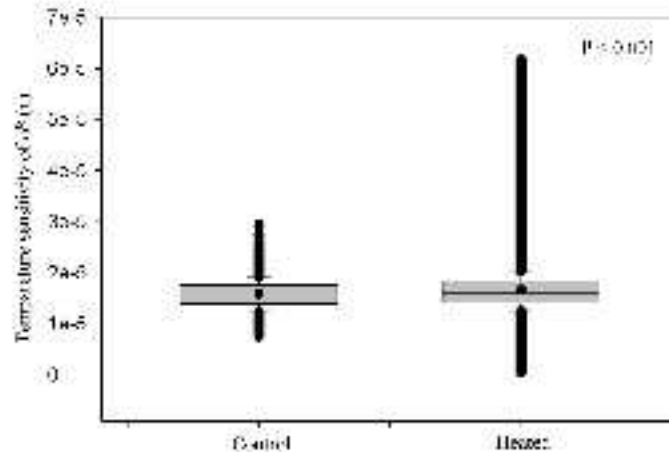
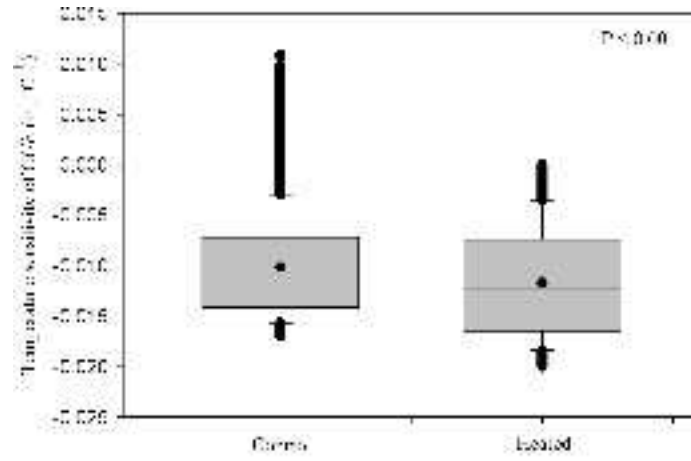
Figure 1. MEND model outputs of daily soil CO₂ efflux rate (mg C m⁻² day⁻¹) at Harvard Forest better matched observational data with the inversion approach (red) compared to without the inversion (blue) in both control (a) and heated (b) conditions.

Figure 2. Boxplots of temperature sensitivities of *CUE* (above) and *rB* (bottom) in control and heated conditions. Boxplots show means (dot), medians (line), 1st and 3rd quartiles (box, interquartile range or *IQR*), upper and lower extremes (whiskers). The whiskers were determined as equal to or less extreme than 1.5 times *IQR* against 1st and 3rd quartiles, respectively. $P < 0.001$ denotes significant difference between means in control and heated conditions.

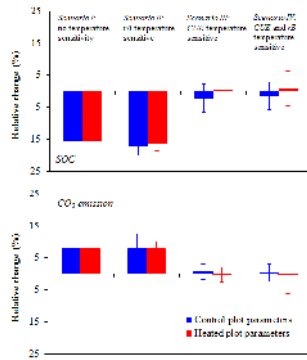
Figure 3. Mean (\pm SD) relative changes in percentage in SOC stock (top panel) and CO₂ emission (bottom panel) with warming (i.e. W5 vs. W0) based on 66-yr model projections using control and heated plot parameters under scenarios I~IV. Scenario details are presented in the *Method* section.



gcb_14517_f1.tif



gcb_14517_f2.tif



gcb_14517_f3.tif