

An Evaluation of Assessment Tools in Outcome-based Education: A Way Forward

*Shamsul Mohamad, Zarina Tukiran, Rafizah Mohd Hanifa, Afandi Ahmad, Mohamad Md Som
Universiti Tun Hussein Onn Malaysia, Malaysia
*shamsulm@uthm.edu.my

Abstract: With the existing manual-based of outcome based education (OBE) systems, data complexity appears as the main problem to be solved. In this paper, a critical discussion of the manual-based system and a way forward with the online version of the OBE systems in the Faculty of Electrical and Electronic Engineering (FKEE), Universiti Tun Hussein Onn Malaysia (UTHM) have been discussed. Two assessment tools of programme learning outcomes (PLOs) as well as course learning outcomes (CLOs) have been used to measure and analyse manually both achievements of the PLOs and CLOs. However, results obtained have shown that these processes require a better system, to deal with various parameters such as different cohort of students and various courses. Obviously, the online-based version and further improvement of the manual-based system that have been proposed are expected to resolve these issues, hence it will be fruitful for the FKEEs' OBE administrator.

Keywords: *Outcome-Based Education (OBE); Programme Learning Outcomes (PLO); Course Learning Outcomes (CLO); OBE Assesment Tools; Online System*

1. Introduction

Outcome-Based Education (OBE) refers to an educational system that focuses on what the students are expected to be able to do within the specified period of learning. This requires having a clear set of essential knowledge and skills that students are expected to have learnt at the end of their learning experience and, then organizing the curriculum, instruction, and assessment to make sure this learning ultimately happens. In Spady's words: "Outcome-Based Education means clearly focusing and organizing everything in an educational system around what is essential for all students to be able to do successfully at the end of their learning experiences. This means starting with a clear picture of what is important for students to be able to do, then organizing the curriculum, instruction, and assessment to make sure this learning ultimately happens" (Spady, 1994). In Malaysia, OBE is being implemented mostly in IPTAs since 2005 to ensure the academic programmes, delivery system and the assessment methods will produce graduates equipped with high quality knowledge and skills. The paradigm shift to OBE in Malaysia is driven by the Quality Assurance Department at the Ministry of Higher Education, known as the Malaysia Quality Agency (MQA). Undergraduate curriculum needs to be transformed into OBE in order to meet the requirements of both the Engineering Accreditation Council (EAC, 2012) and the Malaysian Qualification Framework introduced by the MQA (MQA, 2012). Faculty of Electrical and Electronic Engineering (FKEE) in Universiti Tun Hussein Onn Malaysia (UTHM) has implemented OBE in its seven (7) Bachelor Degree programme. The OBE implementation at FKEE is conducted, evaluated and monitored by OBE committee that has representatives from five (5) departments. There are many assessment tools developed by University's OBE committee as well as FKEE OBE's committee in order to support the process of OBE implementation and ease the work of documenting for each programme (OBE Committee, 2010). Here, in this paper, the discussion is mainly focuses on direct evaluation/assessment tools that have been developed by FKEE OBE's committee to measure the OBE performance for each programme in the faculty. The rest of the paper is organized as follows: The next section discusses on the current OBE implementation based on one of the Bachelor Degree programme offered by FKEE. The next three sections discuss on the assessment tools used to measure the OBE performance for each programme. The last section explains on the future works and, finally the paper is concluded in section 6.

2. Current OBE Implementation

At fkee, each programme has their curriculum structures that contain three major components to be evaluated which are programme educational objectives (PEO), programme learning outcomes (PLO) and

course learning outcomes (CLO). In order to describe each component, bachelor of electronic engineering (computer engineering) with honours or bec is used as an example. The first enrolment for this programme is started in semester 1 session 2010/2011. PEOs describe in general the career and professional accomplishments that the programme is preparing for the graduates to achieve. Table 1 shows the PEOs for BEC programme.

Table 1: BEC PEOs

PEO1	competent in the field of electronic and computer engineering to fulfill the needs of industry at the national and international level
PEO2	able to deliver, enhance and develop their ability and experience on a continuous basis as professional engineers.
PEO3	able to practice and implement ethics and social responsibility to the global community.

POs as shown in Table 2 describe the expectations in terms of skills, knowledge or attitude acquired by students after following the programme.

Table 2: BEC PLOs

PLO#	Domain	Skills
	Knowledge	Cognitive
	Knowledge and Practical	Cognitive
	Communication	Psychomotor
	Problem Solving	Cognitive
	Team working	Psychomotor
	Life-long Learning	Affective
	Entrepreneurship	Psychomotor
	Professionalism, Ethics and Humanity	Affective
	Leadership	Affective
	Design	Psychomotor
	Sustainable Development	Affective

Even though the PEOs assessment will begin after at least five (5) years of graduation, inputs obtained from PLOs direct assessment can be used as initial indicator of PEO achievement of the programme. This can be done by knowing the relationship between PEOs and PLOs as shown in Table 3.

Table 3: Relationship between PEOs and PLOs

	PLO1	PLO2	PLO3	PLO4	PLO5	PLO6	PLO7	PLO8	PLO9	PLO10	PLO11
PEO1	x	x		x						x	
PEO2			x			x	x				x
PEO3					x			x	x		

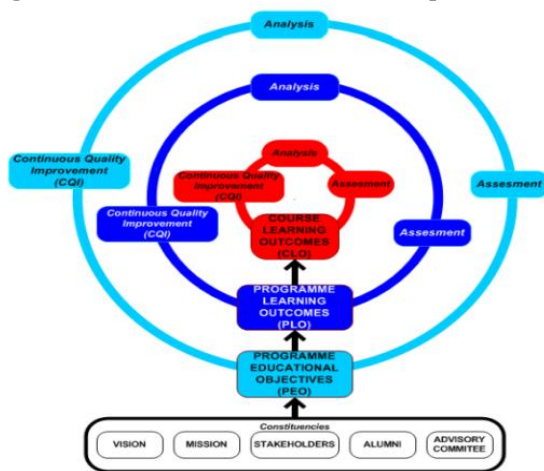
Currently, in BEC programme there are four (4) categories of courses which are university courses, core courses, specialization courses and elective courses. These courses have been designed to assess the stated PLOs. Figure 1 has taken few BEC specialization courses that have been mapped with the BEC PLOs.

Figure 1: Mapping on BEC Specialization Courses and BEC PLOs

Specialization Courses	PLO1	PLO2	PLO3	PLO4	PLO5	PLO6	PLO7	PLO8	PLO9	PLO10	PLO11
BEC101012 Computer Programming	x				x	x					
BEC20602 Data Structures & Algorithms	x		x						x		
BEC20702 Object Oriented Programming	x		x						x		
BEC30403 Microprocessor & Microcontroller				x						x	x
BEC41703 Embedded System Design				x						x	x
BEC40602 Final Year Project I		x	x			x					
BEC40704 Final Year Project II				x			x	x			

CLOs are designed to specify skills or domains required to be achieved by students at the end of the course. Thus, each course has three (3) CLOs comprises of three (3) domains that reflect to cognitive, psychomotor and affective skills. Using specific direct assessment tools (such as quizzes, assignment etc.) setting up by lecturers/instructors, students' skills/domains will be measured. The result obtained will give indicator on CLOs achievement. In OBE, there are three-level attainment loop shown in Figure 2. The inner-most loop which is the CLO attainment is where it will affect the teaching and learning activities. Direct feedback or measurement especially from the students will be acquired at this level. The results from the assessments and survey shall be used in the CLO analysis and review. The PEO or the outer-loop encompasses the whole OBE implementation. The inputs and feedback from the major stakeholders, which included the alumni, advisory committee, external examiner, faculty and students, would be acquired periodically to be used in the review process. Any changes made at PEO level will cascade down to programme level. The PLO or middle-loop attainment would define the attributes set upon graduation. Again, the relevant feedback will be acquired and shall be used during the PLO analysis and review. The changes at PLO level will go down to the inner-most loop which is the CLO or course level attainment loop.

Figure 2: Three-level attainment loop of OBE



There are two (2) types of assessments; direct assessment or indirect assessment. In evaluating the OBE achievement for the program, this paper discusses two (2) direct assessment tools that have been used to assess the CLOs and PLOs. These tools have been developed using Microsoft Excel.

3. Course Learning Outcomes Tool

CLOs describe the specification of what a student should learn as the result of a period of specified and supported course. CLO ANALYSIS 2012 is a revised version of tool used to measure achievement level of CLO in the course. The tool has five (5) sections; Matrix CLO-PLO, CLO Analysis, Coordinators, CQI and Help as highlighted by the red box in Figure 3.

Figure 3: Sections in CLO Analysis Tool

3	Faculty: Faculty of Electrical and Electronic Engineering												
4	Programme: Bachelor Degree of XXXX (with honours)												
5	Course with Code: BXX XXXXX - Course Name												
6	Semester, Session: Semester XX, 2011/2012												
7	Cohort of student: 20XX/20XX (STPM/Matriculation or Ex-Diploma)												
8													
9	Programme Learning Outcome (PLO)												
10		Knowledge	Knowledge & Practical	Communication Skills	Critical Thinking & Problem & Problem	Team Working Skills	Life-long Learning	Entrepreneurship Skills	Professionalism	Social Ethics	Leadership Skills	Design	Sustainable Development
11		PLO 1	PLO	PLO	PLO	PLO 5	PLO	PLO 7	PLO	PLO	PLO	PLO	PLO
12		C	C	P	C	P	A	P	A	A	P	A	A
13	Taxonomy Level (Please indicate level)												
14	Matrix CLO-PLO CLO Analysis Coordinator CQI Help												

As an example, results obtained from BEC10102 Computer Programming course assessment will be used to illustrate each section in CLO ANALYSIS 2012. In Matrix CLO-PLO section required lecturers/instructors to key-in the CLO-PLO of the course, the delivery method and assessment tools used. The Key performance indicators (KPI) column stated minimum target/ goal set for a specific assessment. The KPI set by the Centre of Academic Development (CAD) UTHM is at least 50% of the students achieve at least 55% for each CLO. As stated in Figure 4, there are three (3) CLOs need to be achieved towards the completion of the course.

Figure 4: Matrix of CLO and PLO

Matrix of Course Learning Outcome and Programme Learning Outcome														
Faculty: Faculty of Electrical and Electronic Engineering Programme: Bachelor Degree of Electronic Engineering (Computer Engineering) with Honors Course with Code: BEC10102 - Computer Programming Semester, Session: Semester 01, 2011/2012 Cohort of student: 2011/2012 (STPM/Matriculation)														
Taxonomy Level (Please indicate level)	Programme Learning Outcome (PLO)													
	Knowledge & Practical	Communication Skills	Critical Thinking & Problem Solving	Team Working Skills	Life-long Learning	Entrepreneurship Skills	Professionalism	Social Ethics	Leadership Skills	Design	Sustainable Development			
	PLO1	PLO2	PLO3	PLO4	PLO5	PLO6	PLO7	PLO8	PLO9	PLO10	PLO11			
	C	C	P	C	P	A	P	A	A	P	A			
	3				4	3								
Course Learning Outcomes (CLO)	Compliance to PLO (Please 'X' once only for each CLO)										Delivery	Assessment	KPI*	
CLO1	X											Lecture, Tutorial, Practicum	Quiz, Test1, Test2, Final Exam, Pre-Lab Report	At least 50% of the student achieved 55% of each CLO.
CLO2						X						Lecture, Tutorial, Practicum	Peer Assessment, Project Report	
CLO3					X							Lecture, Tutorial, Practicum	Project Presentation, Lab Report	

CLOs should be measurable and observable via cognitive, psychomotor and affective learning domains. In other words, CLOs should reflect essential knowledge, skills and attitudes and finally, represent the minimum performances that must be achieved to successfully complete the course.

Figure 5: CLO analysis for BEC10102 Computer Programming

CLO Analysis for BEC10102 (Section 02 - BEC)														
Assessment Tools	CLO 1 (Cognitive)						CLO 2 (Affective)				CLO 3 (Psychomotor)			
	Test1	Test2	Final E	Quiz	PreLab	Norm. %	PrjRpt	Peers	Others	Norm. %	Lab	Present.	Others	Norm. %
Assessment Value (%)	10%	10%	40%	5%	4%		7%	4%	0%		16%	4%	0%	
No. / Metric No.	69%						11%				20%			
1 AE110305	5.4	4.5	32.7	1.5	2.7	67.8%	5.8	3.7		86.4%	12.4	3.2		78.0%
2 AE110392	4.7	6.2	12.8	1.2	3.1	40.5%	5.8	4.0		88.9%	9.8	3.4		66.0%
3 AE110229	1.4	0.4	6.8	0.0	1.5	14.7%	5.0	0.0		45.5%	2.9	0.0		14.5%
4 AE110192	2.8	1.2	14	0.3	2.1	29.5%	0.0	0.0		0.0%	3.1	0.0		15.7%
...
48 AE110299	5.7	5.5	21.2	3.4	2.9	56.0%	4.7	3.6		75.2%	10.5	3.1		67.9%
49 AE110072	7.0	8.2	34.8	3.6	3.2	82.4%	4.5	4.0		77.3%	12.3	2.9		75.8%
50 AE110119	4.5	1.8	22.3	1.8	3.3	48.8%	5.0	4.0		81.8%	13.8	3.0		84.1%
51 AE110344	7.7	8.8	36.6	5.0	3.6	89.4%	6.2	4.0		92.4%	15.4	3.6		95.1%
52 AE110361	7.1	6.5	30.4	3.9	3.4	74.3%	4.3	3.8		74.2%	14.4	3.0		87.0%
						0.0%				0.0%				0.0%
						0.0%				0.0%				0.0%
No. of student achieved 55% of each CLO	30						49				49			
Average CLO Achievement	55.0%	48.5%	58.5%	51.5%	76.2%	57.7%	94.2%				94.2%			
	PASS						PASS				PASS			

In the CLO Analysis section, the information need to be entered is the assessment methods/tools used to measure the achievement of cognitive, affective and psychomotor domains. In the following example shown in Figure 5, the cognitive domain for CLO#1 of BEC10102 Computer Programming is evaluated based on Test1, Test2, Final Exam, Quiz and Prelab that carry 10%, 10%, 40%, 5% and 4% weight age. The affective domain for CLO#2 for the course is evaluated based on project report and peers assessment with 7% and 4%. Lab activities (16%) and presentation (4%) are used as the assessment method to evaluate the psychomotor domain for CLO#3 of the same course. A total of 30 students from 52 students have achieved the target set for the Cognitive Domain (57.7%), Affective Domain (94.2%) and Psychomotor Domain (94.25). This shows that this CLO has been achieved based on the KPI that has been set.

4. Programme Learning Outcomes Tool

PLO are statements that describe what students are expected to know and able to perform or attain by the time of graduation in terms of skills, knowledge and behaviour or attitude that the student acquired after following the programme. The tool used is called PLO ANALYSIS 2012 which is a revised version to measure achievement of PLO for the programme. The tool has two (2) sections; Matrix Courses-PLO and CQI as highlighted by the red box in Figure 9.

Figure 9: Sections in PLO Analysis Tool

			Programme Learning Outcome (PLO)											
			Knowledge	Knowledge & Practical	Communication Skills	Critical Thinking & Problem Solving	Team Working Skills	Life-long Learning	Entrepreneurship Skills	Professional, Social, Ethics and Humanity	Leadership Skills	Design	Sustainable Development	
No.	Course Code	Course Name	Credit	PLO 1	PLO 2	PLO 3	PLO 4	PLO 5	PLO 6	PLO 7	PLO 8	PLO 9	PLO 10	PLO 11
Learning Domains			C	C	P	C	P	A	P	A	A	P	A	
CORE COURSES														
1	BEC1002	Computer Programming	2	57.7%					94.2%	94.2%				5m1
2	BEE1002	Engineers and Society	2	88.9%					100.0%		91.7%			5m1

As shown in Figure 10, the Matrix CLO-PLO section listed all courses that need to be taken and completed by BEC students. Programme coordinator is a person responsible to record this section by inserting the collected data from CLO analysis tool.

Figure 10: Matrix CLO-PLO section for BEC programme

Programme Learning Outcome Analysis (Kohort 2010/2011, Matric Number AE10XXXX)

Faculty: Faculty of Electrical and Electronic Engineering
 Programme: Bachelor Degree of Electronic Engineering (Computer Engineering) with Honours

			Programme Learning Outcome (PLO)											
			Knowledge	Knowledge & Practical	Communication Skills	Critical Thinking & Problem Solving	Team Working Skills	Life-long Learning	Entrepreneurship Skills	Professional, Social, Ethics and Humanity	Leadership Skills	Design	Sustainable Development	
No.	Course Code (Old)	Course Name	PLO 1	PLO 2	PLO 3	PLO 4	PLO 5	PLO 6	PLO 7	PLO 8	PLO 9	PLO 10	PLO 11	
Learning Domains			C	C	P	C	P	A	P	A	A	P	A	
CORE COURSES														
1	BEC1002	Computer Programming		32.0%				72.0%	52.2%					
2	BEE1002	Engineers and Society		100.0%				92.3%		92.3%				
3	BEE1003	Electric Circuits		19.2%				100.0%	100.0%					
4	BEC41102	Computer System Usage												
4	BEC41803	Software Engineering								X		X	X	
41	BEC41903	Computer Security										X	X	
42	BEC42003	VLSI System Design										X	X	
43	BEB30803	Applied Electromagnetics			X			X			X		X	
Number of courses			4	6	3	4	7	3	1	1	5	3	5	
Average PLO Achievement			63.6%	60.3%	100.0%	42.7%	94.9%	91.1%	100.0%	92.3%	96.7%	98.7%	99.2%	
KPI Status (Based on 60%)			PASS	PASS	PASS	FAIL	PASS	PASS	PASS	PASS	PASS	PASS	PASS	

The CQI section for the programme is then proposed based on discussion among lecturers/instructors of the department. Figure 11 shows some example of suggested action that can be taken to improve the achievement of each PLO.

Figure 11: CQI Section in PLO Analysis Tool

Continual Quality Improvement (CQI)	
<p>PLO 1</p> <p>Test and Final examination paper have two parts - Part A objectives and Part B subjectives</p>	<p>PLO 9</p> <p>Students shall be exposed with "crisis management" for better teamworking synergy.</p>
<p>PLO 2</p> <p>Assessment for laboratory session should cover three domain of Bloom taxonomy.</p>	<p>PLO 10</p> <p>Develop additional skill such as simulation and analysis skill using engineering software based on the given project or assignment.</p>

Future Works: Performance analysis of Course Learning Outcomes (CLOs), Programme Learning Outcomes (PLOs) and Continuous Quality Improvement (CQI) have been conducted manually by the OBE Committee of the department and the current activities are tedious and time consuming. This is because each programme is offered to potential students twice per academic calendar for matriculation and diploma holders. The CLOs and PLOs assessment and analysis are conducted and recorded based on students' admission and enrolment. Therefore, OBE Online System is proposed to automate the task of OBE committee and ease the documentation work for the programme. (Chan et. al, 2007), (Md. Kamal et al., 2009) and (Anuar, et al, 2009) also use online system to manage their document on OBE. This online system will consists of three (3) major components; PEOs, PLOs and CLOs. For a start, a login and registration modules of OBE Online System has been developed, uploaded and tested to meet user's requirements.

Figure 12: Initial GUI of OBE Online System

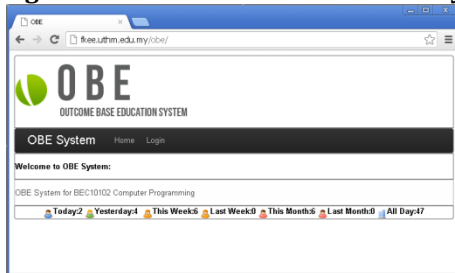


Figure 13: Login module

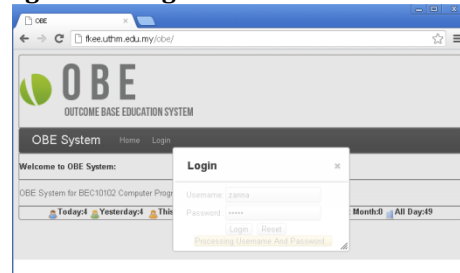
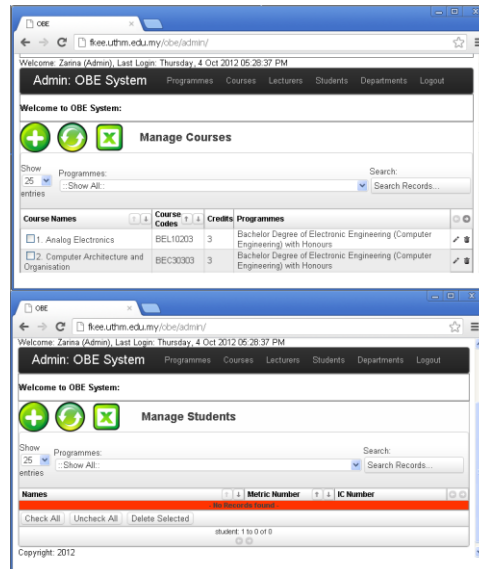
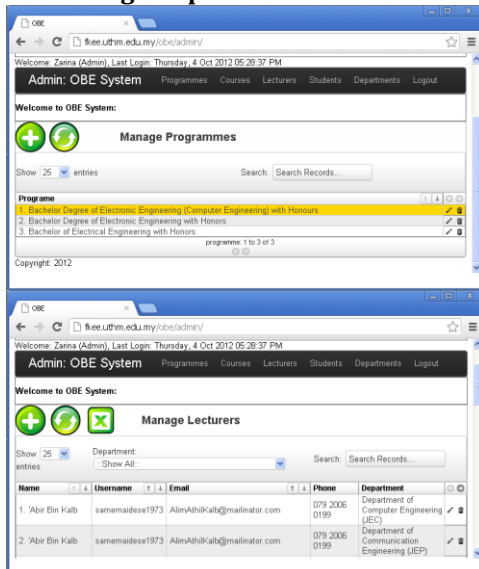


Figure 12 shows the main interface of an OBE Online System. To login the system, the user needs to key in their username together with the password. Only authorized users are allowed to use the systems. Login module shows in Figure 13 is for the administrator of an OBE Online System to manage the registration module. The registration module consists of four (4) sub-modules: Manage Programme, Manage Courses, Manage Lecturers, and Manage Students Figure 14 show the interfaces for each sub-modules mentioned above.

Figure 14: Sub-module: Manage Programme, Manage Courses, Manage Lecturers, Manage Students and Manage Departments.



5. Conclusion

In conclusion, an online version of the OBE systems has been proposed and developed using HTML, PHP and SQL Coding. Preliminary results that have been obtained reveal that the online version still requires further

analysis and evaluation to cope with massive data and various parameters. However, it is worth mentioning that this system is a significant kick start to solve issues in OBE.

Acknowledgment: The authors would like to thank the Universiti Tun Hussein Onn Malaysia (UTHM) for funding this research via Short Term Grant Scheme (STG) Vot 0991.

References

- Anuar, A., Shuaib, N. H., Mohamed-Sahari, K. S. & Zainal-Abidin, I. (2009). Continual Improvement and Assessment Plan for Mechanical Engineering Programme in UNITEN. 2009 International Conference on Engineering Education (ICEED 2009), (19-24).
- Chan, M. T., Mong, F. Y. & Chan, F. K. H. (2007). Towards a Computer-based Supporting Infrastructure for Outcome-based Education. 7th IEEE International Conference on Advanced Learning Technologies (ICALT 2007).
- Engineering Accreditation Council. (2012). Engineering Programme Accreditation Manual 2012.
- Malaysia Quality Agency. (2012). Malaysian Qualification Framework.
- Md-Kamal, M., Latip, M. F. & Hashim, H. (2009). Examinable Course Assessment Tool Based on Outcome Based Education. 2009 International Conference on Engineering Education (ICEED 2009), (177-182).
- OBE Committee. (2010). OBE Implementation Guidebook, Faculty of Electrical & Electronic Engineering, Universiti Tun Hussein Onn Malaysia.
- Spady, W. (1994). Outcome-based education: Critical issues and answers. Arlington, VA: American Association of School Administrators.