

Phenotype-Genotype Correlation in Colorectal Cancer: A Real-Life Study

Catarina Frias-Gomes^a Ana Carla Sousa^b Inês Rolim^{c, d}
Ana Raquel Henriques^d Francisco Branco^e André Janeiro^b
Sara Malveiro^b Ana Rita Dário^b Maria Helena Oliveira^f Paula Borralho^{d, g}
José Alberto Teixeira^e Ana Faria^e Rui Maio^h Isabel Fonseca^{c, d} Marília Cravo^a

^aServiço de Gastreenterologia, Departamento de Cirurgia, Hospital Beatriz Ângelo, Loures, Portugal; ^bGenomed, Instituto de Medicina Molecular, Lisboa, Portugal; ^cServiço de Anatomia Patológica, Instituto Português de Oncologia Francisco Gentil, Lisboa, Portugal; ^dInstituto de Anatomia Patológica, Faculdade de Medicina, Universidade de Lisboa, Lisboa, Portugal; ^eServiço de Oncologia Médica, Departamento de Oncologia, Hospital Beatriz Ângelo, Loures, Portugal; ^fServiço de Anatomia Patológica, Hospital Beatriz Ângelo, Loures, Portugal; ^gServiço de Anatomia Patológica, Hospital CUF Descobertas, Lisboa, Portugal; ^hServiço de Cirurgia Geral, Departamento de Cirurgia, Hospital Beatriz Ângelo, Loures, Portugal

Keywords

Overall survival · Disease-free survival · *RAS* · *BRAF* · Mismatch repair · Tumour heterogeneity

Abstract

Background and Aims: Colorectal cancer (CRC) is a heterogeneous disease with distinctive genetic pathways, such as chromosomal instability, microsatellite instability and methylator pathway. Our aim was to correlate clinical and genetic characteristics of CRC patients in order to understand clinical implications of tumour genotype. **Methods:** Single-institution retrospective cohort of patients who underwent curative surgery for CRC, from 2012 to 2014. *RAS* and *BRAF* mutations were evaluated with the real-time PCR technique Idylla[®]. Mismatch repair deficiency (dMMR) was characterized by absence of MLH1, MSH6, MSH2 and/or PMS2 expression, evaluated by tissue microarrays. Overall survival (OS) and disease-free survival (DFS) were assessed using survival analysis. **Results:** Overall, 242 patients were included (males

57.4%, age 69.3 ± 12.9 years; median follow-up 49 months). *RAS*-mutated tumours were associated with reduced DFS ($p = 0.02$) and OS ($p = 0.045$) in stage I–III CRC. *BRAF*-mutated tumours were more predominant in females and in the right colon, similarly to dMMR tumours. *BRAF* status did not influence OS (4 years)/DFS (3.5 years) in stage I–III disease. However, after relapse, length of survival was 3.5 months in *BRAF*-mutated tumours in contrast to 18.6 months in *BRAF* wild-type tumours ($p = \text{NS}$). No germline mutations in mismatch repair genes were so far identified in the patients with dMMR tumours. Molecular phenotype (*RAS*, *BRAF* and MMR) did not influence OS in metastatic patients. Our small sample size may be a limitation of the study. **Conclusion:** In our cohort, *RAS*-mutated tumours were associated with worse DFS and OS in early-stage CRC, whereas the remaining molecular variables had no prognostic influence.

© 2021 Sociedade Portuguesa de Gastreenterologia
Published by S. Karger AG, Basel

Correlação fenótipo-genótipo no cancro colo-rectal: estudo da vida real

Palavras Chave

Sobrevivência global · Sobrevivência livre de doença · *RAS* · *BRAF* · *Mismatch repair* · Heterogeneidade tumoral

Resumo

Introdução: O cancro colo-rectal (CCR) é uma doença heterogénea, com vias genéticas distintas, nomeadamente instabilidade cromossómica, instabilidade de microssatélites e via metiladora. O nosso objetivo foi correlacionar as características clínicas e genéticas dos doentes com CCR e, deste modo, conhecer as implicações na prática clínica do genótipo tumoral. **Métodos:** Estudo de coorte retrospectivo unicêntrico de doentes diagnosticados com CCR e submetidos a cirurgia com intuito curativo, entre 2012 e 2014. As mutações *RAS* e *BRAF* foram avaliadas pela técnica de *real time PCR* Idylla®. A deficiência de *mismatch repair* (MMR) foi avaliada pela técnica de *tissue microarrays* e definida pela ausência de expressão de MLH1, MSH6, MSH2 e/ou PMS2. A sobrevivência global (SG) e a sobrevivência livre de doença (SLD) foram avaliadas por análise de sobrevivência. **Resultados:** No total, foram incluídos 242 doentes (homens 57.4%, idade 69.3 ± 12.9 anos, mediana de seguimento de 49 meses). Os tumores *RAS*-mutados associaram-se a menor SLD ($p = 0.02$) e SG ($p = 0.045$) em doentes com CCR estadio I-III. Os tumores *BRAF*-mutados foram mais frequentes em mulheres e nos tumores do cólon direito, assim como os tumores com deficiência para MMR. O status *BRAF* não influenciou a SG (4 anos)/SLD (3.5 anos) nos estadio I-III. Contudo, após a recidiva, o tempo de sobrevivência foi de 3.5 meses nos tumores *BRAF*-mutados, em comparação com 18.6 meses nos tumores sem esta mutação ($p = \text{NS}$). Não se identificaram mutações germinativas nos genes de *mismatch repair* nos doentes com tumores deficientes para estas proteínas (dMMR). O perfil molecular (*RAS*, *BRAF* e *MMR*) não influenciou a sobrevivência global dos doentes com metástases ao diagnóstico. O tamanho da amostra pode ser uma limitação do estudo. **Conclusão:** Na nossa coorte, os tumores *RAS*-mutados associaram-se a pior SLD e SG nos estádios precoces de CCR. Os restantes marcadores moleculares não influenciaram o prognóstico dos doentes.

© 2021 Sociedade Portuguesa de Gastroenterologia
Publicado por S. Karger AG, Basel

Introduction

Colorectal cancer (CRC) is the second most common cause of death from cancer worldwide [1]. Despite advances in screening and treatment, survival at 5 years remains only 65% [2]. Understanding the specific mechanisms of tumorigenesis may be critical for an optimal management of this disease, via prognostication and identification of new and more specific targets with the hope of defining individualized therapies.

Three main carcinogenic pathways of CRC have been recognized through the identification of major genetic events. The chromosomal instability pathway is characterized by tumours harbouring a *RAS* mutation, the mutator pathway can be identified via MLH1, MSH2, PMS2 and/or MSH6 silencing and the methylator pathway, by the fact that most tumours harbour a *BRAF* mutation and MLH1 is silenced by gene promoter hypermethylation [3].

The presence of activating mutations in *RAS* has been associated with a poorer prognosis [4] and is recognized as a strong predictor of resistance to EGFR-targeted agents [5, 6]. For these reasons mutational analysis of the *RAS* proto-oncogene is routinely performed in metastatic CRC in order to predict their response to targeted therapies – cetuximab or panitumumab.

The presence of microsatellite instability (MSI) identifies tumours from the mutator pathway with specific phenotypic features such as tumour location in the right colon, mucinous differentiation, “Crohn-like” lymphocyte responses or tumour-infiltrating lymphocytes, and better prognosis [7, 8]. Furthermore, stage II microsatellite instability-high (MSI-H) tumours with high-risk features for local or distant recurrence may not benefit from adjuvant chemotherapy due to resistance to fluoropyrimidines [9, 10]. Tumours with MSI exhibit some overlapping features with those emerging from the methylator pathway, and approximately 40% of tumours with an MSI phenotype may be associated with the so-called “serrated” pathway of CRC, where MLH1 silencing occurs through hypermethylation. This model of progression to cancer is somewhat accelerated as compared to the suppressor pathway involved in the classic adenoma-carcinoma sequence. From a molecular point of view, there is a higher incidence of *BRAF* mutations, whereas TP53 mutations display a lower rate [11]. *BRAF* mutations have been identified in metastatic CRCs with wild-type, non-mutated *KRAS*. These tumours seem to have a worse prognosis and may be resistant to anti-EGFR therapies [12].

The identification of these different pathways has brought about the recognition that CRC is no longer a homogeneous disease – different phenotypes having different behaviours, prognoses and responses to therapy [13].

Against this background and using a large, retrospective, single-institution series of cases with at least 4 years of follow-up, we evaluated clinical, morphological and genetic characteristics of CRC to assess their impact on clinical outcome, in a real-life scenario.

Methods

Patient Population

This retrospective cohort study included 242 consecutive patients with CRC diagnosed and treated between 2012 and 2014 (Hospital Beatriz Angelo). Only cases with available surgical specimens of the primary tumour were included. We excluded patients (i) with unresectable M1 disease or who underwent urgent surgery due to colonic obstruction and (ii) patients undergoing endoscopic resection. An electronic database was created in REDCap. Demographic, clinical and therapeutic data were collected from medical records. Patients were staged according to the American Joint Committee on Cancer/Union for International Cancer Control (AJCC/UICC) tumour node metastasis (TNM) staging system (7th edition). The study was approved by the hospital Ethics Committee.

Immunohistochemical and Molecular Analysis

Surgical specimens were retrieved and centrally reviewed. CRCs were analysed for *RAS* status, *BRAF* inactivation and immune expression of MMR genes.

Both *RAS* and *BRAF* status were assessed by real-time polymerase chain reaction (real-time PCR) in formalin-fixed, paraffin-embedded tissue sections. For *KRAS* and *NRAS* we analysed exons 2, 3 and 4. For *BRAF*, exon 15 was analysed. Only *RAS* wild-type tumours were tested for *BRAF* mutations.

MMR deficiency (dMMR) was characterized by the absence of MLH1, MSH6, MSH2 and/or PMS2 expression, evaluated in tissue microarrays. Staining of MMR proteins was performed using a Ventana Benchmark Ultra automated staining system, according to the manufacturer instructions, using the following monoclonal antibodies: anti-MLH1 (M1, MM PAB-US), anti-MSH2 (G219-1129, MM PAB-US), anti-MSH6 (SP93, RM PAB-US) and anti-PMS2 (A16-4, MM PAB-US). Normal colonic crypt epithelium adjacent to the tumour and stromal cells served as internal positive controls. Loss of expression was recorded when nuclear staining was absent in malignant cells but preserved in normal epithelial and stromal cells. All the tissue microarrays were independently evaluated by 2 pathologists. The few cases with discrepant scoring were re-evaluated by a third pathologist. Tumours with MLH1 or PMS2 methylation and concomitant *BRAF* mutation were considered to be part of the methylator pathway. In our hospital, routine evaluation of MMR gene expression by immunohistochemistry only started in 2016 and, thus, dMMR tumours (without *BRAF* mutations) were only identified when this study was performed.

Tumour genotyping was attempted in all cases but, for technical reasons, MMR status was informative in only 198/242 cases, *RAS* in 241/242 and *BRAF* in all cases tested (134/134 *RAS* wild type).

Tumour Location

Primary tumours originating distally from the splenic flexure were classified as left-sided tumours (sigmoid and descending colon, including splenic flexure), whereas those originating proximally were right-sided (appendix, caecum, ascending colon, hepatic flexure and transverse). Rectal tumours were analysed separately.

Study Outcomes

Primary clinical outcomes were evaluated in terms of overall survival (OS) and disease-free survival (DFS). OS was defined as the time from surgery until death or last follow-up. DFS was the time from surgery to the first radiographic or endoscopic evidence of relapse (new colonic tumour, including both anastomosis relapse or metachronous CRC tumours, or metastasis). Survival data were censored at the time of the last follow-up.

Statistical Analysis

Categorical variables were compared using χ^2 analysis. Continuous variables were compared by a two-tailed Student *t* test or Mann-Whitney U test according to normal and non-normal distributions. Kaplan-Meier survival curves were plotted to assess the temporal rate of events (OS, DFS). The log rank test was used to compare survival-free durations. Multivariable models (Cox regression) were adjusted for stage at diagnosis, primary tumour location, age and molecular profile status (MMR, *BRAF* and *RAS*). We also performed multivariable analysis including adjuvant chemotherapy in stage III CRC. All statistics were performed using SPSS (version 23).

Results

Overall, 242 patients were included with curative intent colorectal surgery at Hospital Beatriz Angelo, between 2012 and 2014. There was a slight male predominance (57.4%), and the mean age at diagnosis was 69.3 ± 12.9 years. The median follow-up was 49 months (interquartile range 34–58; OS 4 years, DFS 3.5 years). Disease stages were the following: I 20.7%, II 32.6%, III 33.5% and IV 13.2%. In upfront stage IV, most patients had liver metastasis (68%), followed by the peritoneum (25%) and lung (7%). During follow-up, 34.7% of patients died (patients without metastasis 29%; patients with metastasis 72%). The rate of relapse in upfront stage I–III patients was 18.6%, compared to 44% in stage IV. 50% of CRC patients without metastases received adjuvant chemotherapy (single agent capecitabine 35.3% and fluoropyrimidine-oxaliplatin combination 64.7%). Age and comorbidities influenced the choice of the chemotherapy

Table 1. Colonic tumours: clinical and demographic data according to tumour location, RAS, BRAF and MMR status

	Overall	RAS		p value	BRAF		p value	Mismatch repair		p value	Tumour location		p value
		mutated	wild type		mutated	wild type		dMMR	pMMR				
Age (mean ± SD), years	69.6±13.1	70±13	69±13	0.35	74±11	69±13	0.19	71±15	68±13	0.55	69±12	70±14	0.35
Sex, %				0.53			0.059			0.17			0.85
Female	46.1	58	42		11.6	88.4		20	80		59	41	
Male	53.9	53	47		4.5	95.5		12	88		58	42	
Staging, %				0.92			0.48			0.88			0.65
M0	88	12	88		8.2	91.8		15.5	84.5		87	89	
M1	12	12	88		4.5	95.5		14.3	85.7		13	11	
Tumour location, %				0.60			<0.001			0.01	-	-	-
Right	42	40	44		15	85		21.6	78.4				
Left	58	60	56		2.5	97.5		7.2	92.8				
Treatment adjuvant, %				0.24			0.22			0.87			0.06
Yes	48	54	46		5.7	94.3		47.8	49.6		54	40	
No	52	46	54		10.6	89.4		52.2	50.4		46	60	
ChT M1, %				0.52			-			0.71			0.005
Yes	84	88	80		0	87		80	86		96	56	
No	16	12	20		100	13		20	14		4	44	
Relapse, %	21.4	21	15	0.28	20	18	0.85	22	17	0.57	22	13	0.12
Death, %	34.5	41	26	0.03	37	34	0.79	31	32	0.94	39	28	0.09

dMMR, deficient MMR; pMMR, proficient MMR; ChT, chemotherapy.

Table 2. Kaplan-Meier univariate analysis: DFS and OS in patients without metastasis (%)

	DFS (3.5 years)	p value	OS (4 years)	p value
Stage (I, II, III)	82 vs. 76 vs. 56	0.02	88 vs. 76 vs. 76	0.06
Age (<70 vs. >70 years)	78 vs. 62	0.008	88 vs. 67	<0.001
Location (right vs. left)	78 vs. 64	0.06	79 vs. 75	0.09
RAS (mut. vs. wt)	63 vs. 78	0.02	70 vs. 80	0.045
BRAF (mut. vs. wt)	72 vs. 73	0.83	65 vs. 79	0.41
MMR (def. vs. pro.)	73 vs. 70	0.92	78.3 vs. 78.2	0.77

Median not reached in survival outcomes (DFS or OS) and presented as the proportion of patients who did not relapse or are alive, at a median follow-up of 48 months. Mut., mutated; wt, wild type; def., deficient; pro., proficient.

regimen (capecitabine alone vs. doublet schemes). Nevertheless, age by itself was not a limiting factor to prescribe adjuvant chemotherapy. In patients with metastases, 84.4% were treated with chemotherapy, namely 5-fluorouracil/leucovorin (5-FU/LV) plus oxaliplatin (FOLFOX) or irinotecan (FOLFIRI) with bevacizumab or cetuximab. In rectal cancer, neoadjuvant chemotherapy regimens included doublet regimens (capecitabine plus oxaliplatin or 5-FU/LV plus oxaliplatin) and were prescribed in 43.2% of patients.

Patient and tumour characteristics are summarized in Table 1. The proportion of RAS-mutated tumours was 55.6%. BRAF inactivation occurred in 7% of all cases, and 15.6% had dMMR.

Colonic Tumours

Colonic and rectal tumours were analysed separately as they are considered 2 different entities with different prognosis and treatment protocols. Although we had 206 cases of colonic tumour, genotyping was possible in 170/206 cases only.

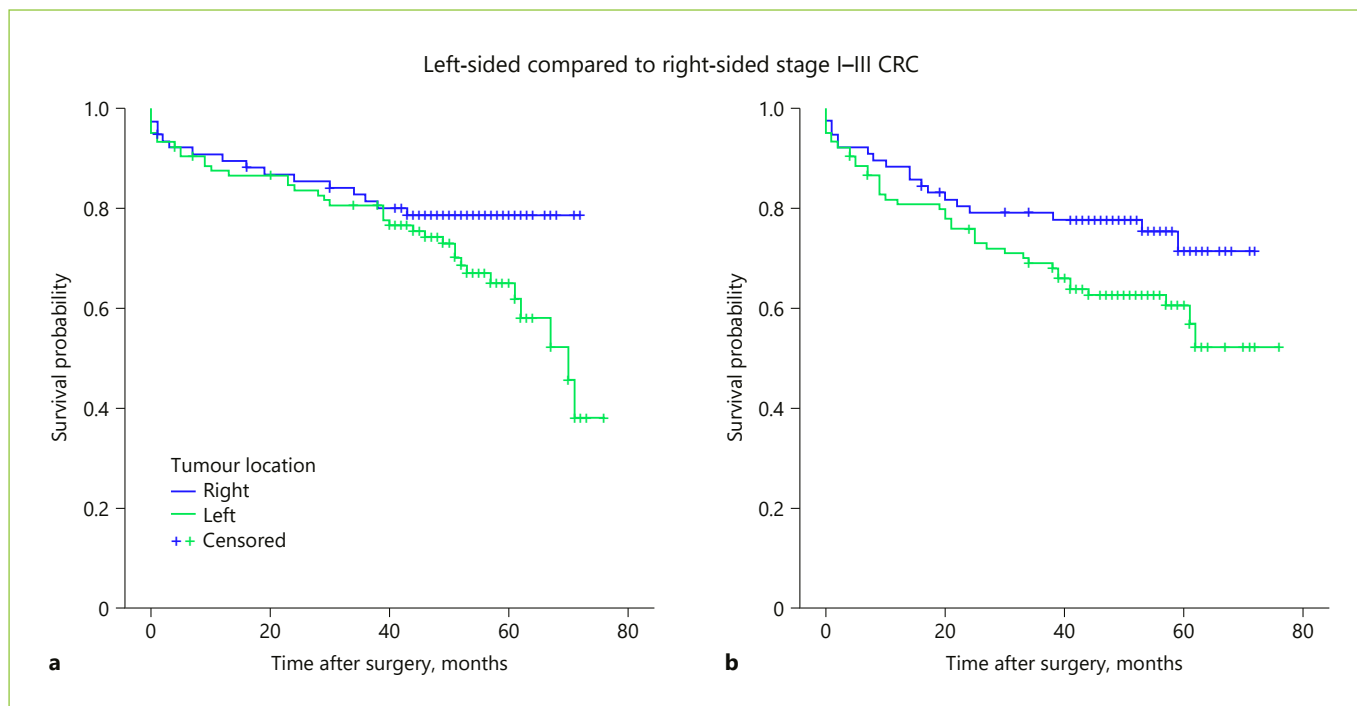


Fig. 1. Kaplan-Meier plots comparing right- and left-sided tumours in patients without metastasis. **a** Overall survival in CRC patients without metastasis (median not reached; at a median time point of 48 months: 79 vs. 75%, $p = 0.09$). **b** Disease-free survival (median not reached; at a median time point of 48 months: 78 vs. 64%, $p = 0.06$).

Overall, 54.8% (113/206) of colonic tumours were *RAS* mutated and were not evaluated for *BRAF* mutations. 15.8% (27/170) were dMMR and 7.8% were *BRAF* mutated (16/206). Concerning dMMR tumours, 22% (6/27) were *BRAF* mutated and considered to belong to the methylator pathway. The remaining 21 were offered germline mutation analysis to identify hereditary cases, and so far no germline mutations have been identified.

Clinical Features

Table 2 summarizes univariate analysis for clinical and molecular biomarkers. Age and TNM stage were the most discriminant variables both for DFS and OS. In respect to tumour location, most tumours were left-sided (58%). No differences were found in age (69 vs. 70, $p = 0.35$), gender distribution (male 58 vs. 42%, $p = 0.85$), synchronous metastases (13 vs. 11%, $p = 0.65$), relapse rate (22 vs. 13%, $p = 0.12$) or mortality rate (39 vs. 28%, $p = 0.09$) between left- and right-sided tumours. In stage I–III CRC, there was a trend towards a better prognosis in right-sided tumours both for DFS and OS (Fig. 1a, b).

Molecular Profile

BRAF-mutated tumours (16/206) were more frequent in the right colon (15 vs. 2.5%, $p < 0.001$), with a trend towards a higher prevalence in female patients (11.6 vs. 4.5%, $p = 0.059$). dMMR tumours were also predominantly right-sided (21.6 vs. 7.2%, $p = 0.01$) whereas no differences were found in the distribution of *RAS*-mutated tumours (Table 1).

In stage I–III patients, *RAS*-mutated tumours had a worse median DFS ($p = 0.02$) and a lower median OS compared to *RAS* wild-type ones ($p = 0.045$; Table 2, Fig. 2a, b). *BRAF* mutation and dMMR did not influence DFS or OS (Table 2). After relapse, 21/33 patients died during the follow-up. 3/21 had *BRAF*-mutated tumours. Time to death after relapse was 3.5 months in cases of *BRAF*-mutated tumours and 18.6 months in *BRAF* wild-type ones ($p = 0.17$). Although the low number of *BRAF*-mutated relapsed patients precludes a survival analysis, the length of survival is clearly lower in patients with *BRAF*-mutated tumours.

In patients with synchronous metastases, no difference in median OS was found according to *RAS* status (16

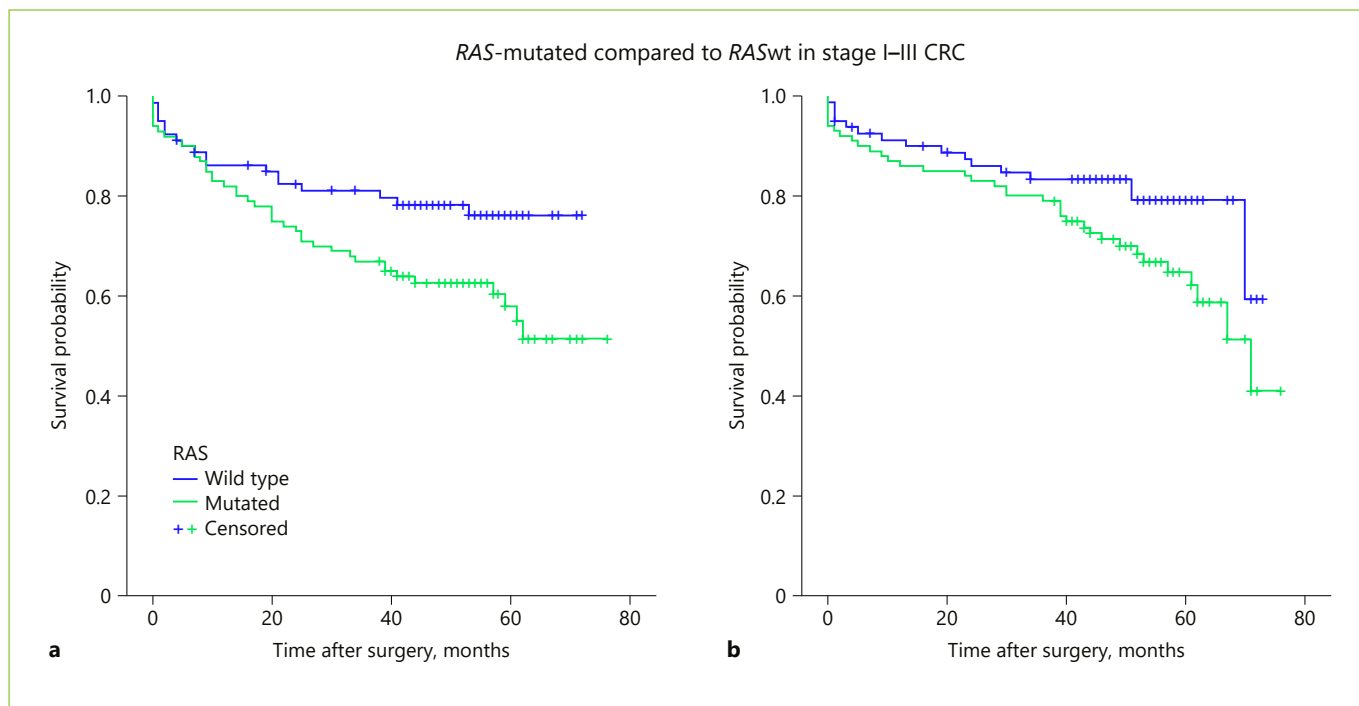


Fig. 2. Kaplan-Meier plots comparing RAS-mutated and RAS wild-type (wt) tumours in patients without metastasis. **a** Overall survival in CRC patients (median not reached; at a median time point of 48 months, 70 vs. 80%, $p = 0.045$). **b** Disease-free survival (median not reached; at a median time point of 48 months: 63 vs. 78%, $p = 0.02$).

vs. 46 months, $p = 0.53$) or dMMR (11 vs. 32 months, $p = 0.29$); only 1 patient had a *BRAF*-mutated tumour which precluded any statistical analysis.

Multivariable Analysis

Table 3 shows multivariable analysis for DFS and OS in patients with non-metastatic disease. In a model including age, stage at diagnosis and molecular profile (*RAS*, *BRAF* and dMMR), we observed that increased age and disease stage were associated with lower DFS. Patients with *RAS*-mutated tumours also had a marginally lower DFS (aHR 1.77, 95% CI 0.96–3.27, $p = 0.07$). Similarly, OS was also significantly associated with increased age and disease stage, whereas patients with *RAS*-mutated tumours also had a trend towards lower survival (aHR 1.91, 95% CI 0.96–3.77, $p = 0.07$). In stage III CRC, adjuvant chemotherapy showed a trend to a higher OS (aHR 0.45, 95% CI 0.16–1.11, $p = 0.08$). Molecular biomarkers did not influence survival outcomes in this subset of patients, most probably due to the low number of patients (online suppl. Table 1; for all online suppl. material, see www.karger.com/doi/10.1159/000516009).

Table 4 shows multivariable analysis for patients with metastases. Age was the only factor associated with worse OS (HR 1.06, 95% CI 1.02–1.10, $p = 0.007$). As previously reported, at least 4 different chemotherapy regimens were prescribed in patients with metastasis. Moreover, patients changed to 2nd and 3rd lines of chemotherapy. Therefore, chemotherapy regimens were not included in the multivariable analysis in this subgroup of patients.

Rectal Tumours

A total of 36 rectal tumours were included, of which 8 had synchronous metastases at diagnosis. Excluding metastatic patients, 21.4% (6/28) relapsed and 28.6% (8/28) died during follow-up. The *RAS* mutation was present in 60.7% (17/28), *BRAF* in 3.6% (1/28) and dMMR in 10.7% (3/28). Of the 6 patients who relapsed, 4 had a *RAS* mutation and none had dMMR. Concerning the 8 patients who died, 5 had a *RAS* mutation and 1 had dMMR. Response to chemoradiotherapy was not significantly associated with *RAS* mutation (60 vs. 75%, $p = 0.54$) or dMMR (50 vs. 67%, $p = 0.60$).

Table 3. Cox regression multivariable analysis for DFS and OS in patients without metastasis

	DFS (3.5 years) (aHR; 95% CI)	<i>p</i> value	OS (4 years) (aHR; 95% CI)	<i>p</i> value
Age in years	1.03 (1.01–1.06)	0.006	1.07 (1.03–1.10)	<0.001
Stage		0.02		0.04
Stage I	0.45 (0.19–1.02)	0.06	0.58 (0.24–1.40)	0.22
Stage II	0.50 (0.28–0.87)	0.015	0.47 (0.25–0.87)	0.02
RAS (mut. vs. wt)	1.77 (0.96–3.27)	0.07	1.91 (0.96–3.77)	0.07
BRAF (mut. vs. wt)	0.73 (0.24–2.22)	0.67	0.45 (0.16–1.32)	0.15
MMR (def. vs. pro.)	1.00 (0.99–1.01)	0.65	1.00 (0.99–1.01)	0.48

Mut., mutated; wt, wild type; def., deficient; pro., proficient.

Table 4. Cox regression multivariable analysis for OS in patients with metastasis

	OS (HR; 95% CI)	<i>p</i> value
Age (years)	1.06 (1.02–1.10)	0.007
RAS (mut. vs. wt)	0.68 (0.28–1.63)	0.39
BRAF (mut. vs. wt)	0.86 (0.09–7.73)	0.89
MMR (def. vs. pro.)	1.00 (0.99–1.01)	0.64

Mut., mutated; wt, wild type; def., deficient; pro., proficient.

Discussion

We evaluated the frequency and prognostic value of RAS and BRAF mutations and dMMR in a retrospective real-life cohort of consecutive patients with CRC who underwent surgery for the primary tumour in a single institution, including both metastatic and non-metastatic cases with at least 4 years of follow-up.

In patients without metastases, the RAS mutation had a negative impact on both DFS ($p = 0.02$) and OS ($p = 0.045$). After adjusting for age, stage at diagnosis and molecular biomarkers, RAS-mutated tumours still had a trend towards worse survival outcome, due to a higher probability of relapse (DFS: aHR 1.77, 95% CI 0.96–3.27, $p = 0.07$) and death (OS: aHR 1.91, 95% CI 0.96–3.77, $p = 0.07$). Prior studies in stage III colon cancer showed that KRAS exon 2 mutations are associated with worse outcome, largely due to early recurrence [14, 15]. In the RAS-CAL II study, mutation in KRAS was associated with a worse overall survival (HR 1.23, 95% CI 1.08–1.54, $p = 0.008$) and failure-free survival (HR 1.3, 95% CI 1.09–1.54, $p = 0.004$).

In the present study, the prevalence for BRAF inactivation was low (7.8%) compared to previous published data (8–14%) [13]. BRAF-mutated tumours were more frequent in the right colon, but no differences in OS or DFS were found. Conflicting results have been published on the prognostic value of BRAF mutation in stage I–III CRC [13]. In a multicentre study, including 2,246 patients with stage II–III colon cancer, BRAF mutation was not a prognostic factor (HR 0.93, 95% CI 0.73–1.20, $p = 0.58$) [16]. Nevertheless, Gavin et al. [17] reported lower OS and survival after relapse in BRAF-mutated tumours, but no difference in DFS in early-stage disease. In our series, we also found that, after relapse, BRAF-mutated tumours seem to have a lower survival (median 3.5 months) compared to BRAF wild-type ones (median 18.6 months) (NS probably due to low numbers). Furthermore, BRAF mutational status may influence the response to chemotherapy after relapse. In former trials [18, 19], a triplet chemotherapy regimen (5-FU, irinotecan and oxaliplatin – FOLFOXIRI), with or without bevacizumab, resulted in a survival benefit over a doublet regimen of 5-FU and irinotecan (FOLFIRI), with or without bevacizumab, in BRAF-mutated metastatic CRC. In clinical practice, intensifying first-line chemotherapy in fit patients with synchronous or metachronous metastatic BRAF-mutated CRC is now preferentially recommended. In the present series only 3 patients with BRAF-mutated tumours relapsed, and these were treated with doublet regimens. Hence, no conclusions can be drawn from this small series.

MMR deficient tumours were more frequent in the right colon (21.6 vs. 7.2%, $p = 0.01$), but did not influence DFS or OS. Even when stratifying by stage, the advantage of dMMR was not apparent in our analysis. The prognostic value of MMR has been evaluated in different studies. In a population-based study, MSI-H tumours had a better

overall survival (HR 0.42, 95% CI 0.27–0.53, $p < 0.001$) and were associated with a decreased probability of metastasizing to regional lymph nodes (OR 0.49, 95% CI 0.21–0.53, $p < 0.001$) and distant organs (OR 0.49, 95% CI 0.27–0.89, $p = 0.02$) [20]. These tumours also exhibited a lower response to 5-FU, especially in stage II [18]. In our study, mutator phenotype was identified solely based on immunochemistry (IHC) of MMR proteins. Conflicting data have been published concerning the correlation between IHC and MSI [19, 21]. In the identification of Lynch syndrome patients, MSI testing (PCR) is considered as the reference tool although it is less accessible than IHC. Nevertheless, recent studies have shown that both techniques have high sensitivity and specificity in screening mutations in MMR genes [22, 23]. The major limitations of immunohistochemistry are due to rare missense mutations that are usually reported in MLH1 and MSH6 genes, which affect protein function. Therefore, IHC may fail to identify all the properties of the MSI phenotype [23]. These differences could account for some of the discrepancies found between the present and prior studies.

No germline mutations in MMR genes were identified so far in patients with dMMR tumours although this analysis is still not complete.

Rectal tumours without synchronous metastases at diagnosis had a higher rate of RAS mutation (60.7%), followed by MMR deficiency (10.7%). Only 1 case was BRAF mutated. In a recent retrospective study, rectal dMMR tumours had a significantly higher TNM downstaging after neoadjuvant chemoradiation, and DFS was significantly higher as compared to MMR proficiency tumours [24]. In our series, different molecular profiles did not correlate with different responses, although our numbers are too small to allow any definitive conclusions.

Right-sided tumours showed a trend towards a better DFS and OS in patients without metastases. Although previous studies suggest that right-sided tumours may have a worse prognosis with lower OS [1], the low rate of BRAF mutations in our series may have contributed to these discrepancies.

Our study has some limitations. We did not account for tumour heterogeneity, which can be highly variable, within primary tumours or between primary and metastatic sites [25]. In a recent systematic review and meta-analysis, metastatic CRC cancer showed high concordance with primary tumours, in multiple biomarkers, such as KRAS (93.7%), NRAS (100%) or BRAF (99.4%) [26]. Even though metastases usually contain genetic abnormalities observed in primary tumours, intra- or inter-tumour heterogeneity may occur, a phenomenon strong-

ly evidenced in CRC tumours [26]. Phenotypic heterogeneity in tumours may constitute a major source of therapeutic resistance [27]. Therefore, treating metachronous metastasis based on the genetic profile of the primary tumour may not be completely appropriate. Finally, identification of tumour genotype was not possible in 170/206 patients with colonic tumours mainly related to difficulties in determining MMR status. Finally, our study had a relatively small sample size, which may justify the lack of significant results and discrepancies from the literature, namely in the prognosis of BRAF-mutated and dMMR tumours.

Although our study is much smaller than previously published clinical trials, it has the advantage of reflecting the potential benefit of studying tumour genotype in clinical practice. As of today, molecular testing is solely performed in clinical practice for the selection of patients with metastatic CRC for targeted biologic agents. In our retrospective study we observed that mutational analysis of CRCs may also allow important prognostication as RAS-mutated tumours have a lower DFS and OS thereby suggesting more intensive surveillance and/or more aggressive therapy, even in early stage II disease. Although our numbers are small, we also found that BRAF mutation only imprints a worse prognosis in relapsed patients, further supporting aggressive upfront therapy with FOLFIRINOX and bevacizumab after relapse, as previously recommended [18, 19]. Besides these potential advantages supporting molecular profiling of CRC we have to consider that, as of today, this analysis is time consuming, expensive and of little help in defining individualized therapies. Larger population studies are warranted to better understand the cost-effectiveness of this strategy when treating patients with CRC.

Acknowledgement

The authors wish to thank Teresa Pereira and Sónia Godinho for their valuable guidance of tissue microarray construction and with the immunohistochemical techniques.

Statement of Ethics

The study was approved by the hospital Ethics Committee.

Conflict of Interest Statement

The authors declare that they have no competing interests.

Funding Sources

There are no funding sources to declare.

Author Contributions

All authors contributed to the manuscript concept and design. C.F.G. collected all data, performed statistical analysis and drafted the manuscript. A.C.S., A.J., S.M. and A.R.D. did the RAS and BRAF analysis by real-time PCR. A.R.H. constructed the tissue

microarrays and performed the immunohistochemical techniques. M.H.O., P.B., I.F. and I.R. read the tissue microarrays and scored the MMR analysis. M.C. conceived the study, did the final revision, and I.F. and R.M. critically revised the paper that was approved in its final version by all the authors.

Data Availability Statement

The data sets used and/or analysed during the current study are available from the corresponding author on reasonable request.

References

- 1 Stintzing S, Tejpar S, Gibbs P, Thiebach L, Lenz HJ. Understanding the role of primary tumour localisation in colorectal cancer treatment and outcomes. *Eur J Cancer*. 2017 Oct;84:69–80.
- 2 Siegel R, Naishadham D, Jemal A. Cancer statistics, 2013. *CA Cancer J Clin*. 2013 Jan;63(1):11–30.
- 3 Sinicrope FA, Okamoto K, Kasi PM, Kawakami H. Molecular Biomarkers in the Personalized Treatment of Colorectal Cancer. *Clin Gastroenterol Hepatol*. 2016 May;14(5):651–8.
- 4 Andreyev HJ, Norman AR, Cunningham D, Oates JR, Clarke PA. Kirsten ras mutations in patients with colorectal cancer: the multicenter “RASCAL” study. *J Natl Cancer Inst*. 1998 May;90(9):675–84.
- 5 Bokemeyer C, Bondarenko I, Makhson A, Hartmann JT, Aparicio J, de Braud F, et al. Fluorouracil, leucovorin, and oxaliplatin with and without cetuximab in the first-line treatment of metastatic colorectal cancer. *J Clin Oncol*. 2009 Feb;27(5):663–71.
- 6 Van Cutsem E, Köhne CH, Hitre E, Zaluski J, Chang Chien CR, Makhson A, et al. Cetuximab and chemotherapy as initial treatment for metastatic colorectal cancer. *N Engl J Med*. 2009 Apr;360(14):1408–17.
- 7 Popat S, Hubner R, Houlston RS. Systematic review of microsatellite instability and colorectal cancer prognosis. *J Clin Oncol*. 2005 Jan;23(3):609–18.
- 8 Alexander J, Watanabe T, Wu TT, Rashid A, Li S, Hamilton SR. Histopathological identification of colon cancer with microsatellite instability. *Am J Pathol*. 2001 Feb;158(2):527–35.
- 9 Meyers M, Wagner MW, Hwang HS, Kinsella TJ, Boothman DA. Role of the hMLH1 DNA mismatch repair protein in fluoropyrimidine-mediated cell death and cell cycle responses. *Cancer Res*. 2001 Jul;61(13):5193–201.
- 10 Sargent DJ, Marsoni S, Thibodeau SN, Labianca R, Hamilton SR, Monges VT et al. Confirmation of deficient mismatch repair (dMMR) as a predictive marker for lack of benefit from 5-FU based chemotherapy in stage II and III colon cancer (CC): A pooled molecular reanalysis of randomized chemotherapy trials. *J Clin Oncol*. 2008 May;26(15):4008.
- 11 Samowitz WS, Albertsen H, Herrick J, Levin TR, Sweeney C, Murtaugh MA, et al. Evaluation of a large, population-based sample supports a CpG island methylator phenotype in colon cancer. *Gastroenterology*. 2005 Sep;129(3):837–45.
- 12 Karapetis CS, Khambata-Ford S, Jonker DJ, O’Callaghan CJ, Tu D, Tebbutt NC, et al. K-ras mutations and benefit from cetuximab in advanced colorectal cancer. *N Engl J Med*. 2008 Oct;359(17):1757–65.
- 13 Cohen R, Cervera P, Svrcek M, Pellat A, Dreyer C, de Gramont A, et al. BRAF-Mutated Colorectal Cancer: What Is the Optimal Strategy for Treatment? *Curr Treat Options Oncol*. 2017 Feb;18(2):9.
- 14 Yoon HH, Tougeron D, Shi Q, Alberts SR, Mahoney MR, Nelson GD, et al.; Alliance for Clinical Trials in Oncology. KRAS codon 12 and 13 mutations in relation to disease-free survival in BRAF-wild-type stage III colon cancers from an adjuvant chemotherapy trial (N0147 alliance). *Clin Cancer Res*. 2014 Jun;20(11):3033–43.
- 15 Blons H, Emile JF, Le Malicot K, Julié C, Zaanen A, Tabernero J, et al. Prognostic value of KRAS mutations in stage III colon cancer: post hoc analysis of the PETACC8 phase III trial dataset. *Ann Oncol*. 2014 Dec;25(12):2378–85.
- 16 André T, Gramont A, Vernerey D, Chibaudel B, Bonnetain F, Tijeras-Raballand A et al. Adjuvant Fluorouracil, Leucovorin, and Oxaliplatin in Stage II to III Colon Cancer: Updated 10-Year Survival and Outcomes According to BRAF Mutation and Mismatch Repair Status of the MOSAIC Study. *J Clin Oncol*. 2015 Dec;33(35):4176–87.
- 17 Gavin PG, Colangelo LH, Fumagalli D, Tanaka N, Remillard MY, Yothers G, et al. Mutation profiling and microsatellite instability in stage II and III colon cancer: an assessment of their prognostic and oxaliplatin predictive value. *Clin Cancer Res*. 2012 Dec;18(23):6531–41.
- 18 Devaud N, Gallinger S. Chemotherapy of MMR-deficient colorectal cancer. *Fam Cancer*. 2013 Jun;12(2):301–6.
- 19 Lindor NM, Burgart LJ, Leontovich O, Goldberg RM, Cunningham JM, Sargent DJ, et al. Immunohistochemistry versus microsatellite instability testing in phenotyping colorectal tumors. *J Clin Oncol*. 2002 Feb;20(4):1043–8.
- 20 Gryfe R, Kim H, Hsieh ET, Aronson MD, Holowaty EJ, Bull SB, et al. Tumor microsatellite instability and clinical outcome in young patients with colorectal cancer. *N Engl J Med*. 2000 Jan;342(2):69–77.
- 21 Chapusot C, Martin L, Puig PL, Ponnelle T, Cheynel N, Bouvier AM, et al. What is the best way to assess microsatellite instability status in colorectal cancer? Study on a population base of 462 colorectal cancers. *Am J Surg Pathol*. 2004 Dec;28(12):1553–9.
- 22 Zeinalian M, Hashemzadeh-Chaleshtori M, Salehi R, Emami MH. Clinical Aspects of Microsatellite Instability Testing in Colorectal Cancer. *Adv Biomed Res*. 2018 Feb;7(28):28.
- 23 Ryan E, Sheahan K, Creavin B, Mohan HM, Winter DC. The current value of determining the mismatch repair status of colorectal cancer: A rationale for routine testing. *Crit Rev Oncol Hematol*. 2017 Aug;116:38–57.
- 24 Meillan N, Vernerey D, Lefèvre JH, Manceau G, Svrcek M, Augustin J, et al. Mismatch Repair System Deficiency is associated with response to neoadjuvant chemoradiation in locally advanced rectal cancer. *Int J Radiat Oncol Biol Phys*. 2019 Nov;105(4):824–33.
- 25 McGranahan N, Swanton C. Clonal Heterogeneity and Tumor Evolution: Past, Present, and the Future. *Cell*. 2017 Feb;168(4):613–28.
- 26 Bhullar DS, Barriuso J, Mullamitha S, Saunders MP, O’Dwyer ST, Aziz O. Biomarker concordance between primary colorectal cancer and its metastases. *EBioMedicine*. 2019 Feb;40(40):363–74.
- 27 Marusyk A, Almendro V, Polyak K. Intra-tumour heterogeneity: a looking glass for cancer? *Nat Rev Cancer*. 2012 Apr;12(5):323–34.