



Sveriges lantbruksuniversitet
Swedish University of Agricultural Sciences

Faculty of Landscape Architecture,
Horticulture and Crop Production Science

National Urban Parks

- a comparison between National Urban Parks in Canada and Sweden

Isabell Holmstedt



Department of Landscape Architecture, Planning and Management

Master Thesis in Landscape Planning, 30 ECTS, A2E

Landscape Architecture programme

Alnarp 2015

National Urban Parks

-a comparison between National Urban Parks in Canada and Sweden

Nationalstadsparker

-en jämförelse mellan Nationalstadsparker i Kanada och Sverige

Isabell Holmstedt

Supervisors: Christine Haaland, SLU, Department of Landscape Architecture, Planning and Management

Assistant Supervisor: Marie Larsson, SLU, Department of Landscape Architecture, Planning and Management

Examiner: Mats Gyllin, SLU, Department of Work Science, Business Economics and Environmental Psychology

Assistant Examiner: Helena Mellqvist, SLU, Department of Landscape Architecture, Planning and Management

Credits: 30 ECTS

Level: A2E

Course title: Master Project in Landscape Planning

Course code: EX0774

Subject: Landscape Planning

Programme: Landscape Architecture programme

Place of publication: Alnarp

Year of publication: 2015

Cover art: *Rouge Park in April, 2014, and the Royal National City Park in April, 2014*, by Isabell Holmstedt

Online publication: <http://stud.epsilon.slu.se>

Keywords: National Urban Park, National City Park, National Park, Canada, Sweden, Rouge National Urban Park, Royal National City Park, Urban Wilderness

Nyckelord: Nationalstadspark, National Park, Kanada, Sverige, Rouge Park, Kungliga Nationalstadsparken,

SLU, Swedish University of Agricultural Sciences

Faculty of Landscape Architecture, Horticulture and Crop Production Science

Department of Landscape Architecture, Planning and Management

“Parks can be ‘a perfect world in miniature, one that provides norms for the larger world to live up to.’” – Czerniak 2007

Acknowledgment

I want to give my advisers, Christine Haaland and Marie Larsson, a large thank you for all the support and help they've given me throughout the process of writing my thesis. They never gave up on me and provided me with a lot of creative critique and encouragement.

I also want to give a big thank you to Mike Bender and Michelle Holmes from Rouge Park Office. Providing helpful input with Rouge Park and the Rouge National Urban Park.

A big thank you to Lars Nyberg and Tove von Euler, County Administration Board, Stockholm, Sweden, for taking time to help me with information about the Royal National City Park.

A special thank you goes to my friends and family for all the never-ending support. I especially want to thank Lena Holmstedt, Patricia Reimer, Stuart Chan and Tomas Henrysson for all the support.

Abstract

The thesis's main aim was to explore definitions and concepts of national urban parks and the concept urban wilderness compare the Rouge National Urban Park, Toronto, Canada with the Royal National City Park, Stockholm, Sweden. Objectives for the parks, their management, regulations, visitor information, challenges and other aspects were compared considering the different national approaches.

A literature review was carried out to study the concept of the national urban park designation in particular in the two studied countries. The history of the designation, their management objectives and regulations, were investigated. Both parks were visited to get an impression about the nature of the parks and about aspects as visitor information. In addition an interview was carried out with the Rouge Park management and a workshop regarding the cultural landscape of the Royal National City Park in Stockholm was attended.

The Royal National City Park in Stockholm was the first national urban park designated worldwide 20 years ago. The Rouge National Urban Park was legalised in May 2015, but the transfer of land and titles is still in process.

National urban parks can also be found in other countries, for example Finland, which today has eight national urban parks. This study shows that despite differences between the two parks regarding national legislation, size (the Rouge National Urban Park will be two or three times the size of the Royal National City Park), context, and access, there are also similarities. Before the Royal National City Park and the Rouge National Urban Park became national urban parks, exploitation plans threatened to destroy valuable natural and cultural areas within the park. With the support of the nearby population and other stakeholders, the landscapes in the parks could be protected.

This study shows how important it is to take care of our nature resources close by and in our cities. This is important for people's health, wellbeing and to be able to reconnect with nature. Through these areas people reconnect with nature and may realize and prioritise nature

areas protection both near and far. These nearby nature areas are also important as areas with high biodiversity, for ecosystem services and as recourses against environmental problems.

Keywords: National Urban Park, Rouge National Urban Park, Royal National City Park, National Park, Canada, Sweden, Urban Wilderness.

Sammandrag

Målet med uppsatsen var att jämföra Rouge Nationalstadspark i Toronto, Kanada, med Sveriges Kungliga Nationalstadspark i Stockholm. För att kunna jämföra nationalstadsparkerna med varandra behövde begreppet Nationalstadspark och liknande begrepp utredas. 'Urban wilderness' var ett begrepp som diskuterades i uppsatsen.

Genom en litteraturstudie klargjordes de olika begreppen. Litteraturstudien gjordes genom en så kallad 'snöbollsstudie'. Studiebesök till nationalstadsparkerna gjordes. Studiebesök gjordes även till områden som klassas som urban wilderness.

Nationalparker har regler som inte alltid passar för naturområden nära städer då inga urbana element får existera i parken. För 20 år sedan fick Sverige världens första nationalstadspark. Sedan maj i år fick Kanada sin första nationalstadspark. Nationalstadsparker kan även hittas i Finland sedan 2001, Finland har idag åtta nationalstadsparker. Rouge Nationalstadspark kommer bli två eller tre gånger så stor som den Kungliga Nationalstadsparken. Både den Kungliga Nationalstadsparken och Rouge Nationalstadspark mötes av hot av exploatering och genom ett stöd från folket blev de parker för att kunna skydda naturen på bästa sätt.

Studien visade hur viktigt det är med att ta hand om våra naturresurser nära och i våra städer, för såväl folks hälsa och välbefinnande, som för att återknyta människor med naturen. Genom natur i närmiljö lär sig folk vikten av att skydda naturområden. Dessa naturområden är viktiga för den biologiska mångfalden i städer och kan även hjälpa i olika miljöproblems situationer så som vid kraftigt regn kan naturområden och grönområden i städer ta till sig vattnet.

Nyckelord: Nationalstadspark, Rouge, Kungliga Nationalstadsparken, Nationalpark, Kanada, Sverige,

Preface

Since childhood an interest for nature has developed. The unspoiled wild forests in Dalecarlia (Dalarna) became the ideal. The mysteries around the unspoiled forest, needed to be answered, how a place could hold such pureness and danger at the same time. For my first project, in first year of landscape architecture, I focused on how to weave the wild forest into my hometown. My hometown is far from larger nature areas so the thought of making space in the city for a forest to grow was to see a dream come true. My bachelor project had the subject: "Protection of Landscape Scenery". This deepened my knowledge about history of protection for the landscape in Sweden with the visual scenery in focus.

The next step was to learn more about stronger protection for our nature that is in use today. This led me to national parks, which are the strongest protection a larger natural area can have. It felt natural to continue on with writing about nature protection through natural parks. The question was how to approach this topic. After a semester abroad in Canada the idea to make a comparison between Canada's and Sweden's national parks surfaced. Knowing people in said countries made site visits easier.

A friend was visiting Stockholm for the first time. She requested directions of what to visit. The search led me to a site about the world's first national urban park in Stockholm: the Royal National City Park. Searching after a similar park in Canada I came across the Rouge National Urban Park, in Toronto, the first national urban park in North America. The subject reconnected with my first project dealing with nature areas in and around cities.

During the course, "Planning project – Driving forces and Contemporary tendencies", a new term was introduced: "urban wilderness" areas that are abandoned and where the vegetation could grow as it pleased. This was a part of the knowledge that was missing in my first project. But can urban wilderness be connected with national urban parks? Can it even be incorporated?

Contents

Background 11

Purpose 13

Objectives and questions 13

Methods 14

Case studies 14

Site selection 15

Study areas 15

Site visit 16

Interview 17

Workshop 17

Literature review 18

Freedom to roam and crown land 18

National Park 20

National urban park 23

National Urban Park in Canada 25

National Urban Park in Sweden 28

Urban Wilderness 29

Rouge National Urban Park – Toronto, Canada 33

Rules and Regulations 35

History 36

Site visits 36

Information 37

Recreation and accessibility 38

Nature 39

Management and maintenance 41

Interview 43

Royal National City Park – Stockholm, Sweden 45

Rules and Regulations 46

History 48

Site visits 48

Information 49

Recreation and accessibility 49

Nature 52

Management and maintenance 54

Workshop 56

Discussion 58

Background 58

History 59

Concepts 59

Visions and goals 61

Four themes 61

Information 61

Recreation and accessibility 63

Nature 65

Management and maintenance 66

Urban wilderness 66

Conclusion 68

Reference 70

Websites 73

List of Figures

- p. 14 Figure 1. World map from <https://pixabay.com/sv/v%C3%A4rlden-karta-klot-namn%C3%B6sa-38033/>, dots added by Isabell Holmstedt, SLU.
- p. 19 Figure 2. Wooden path, Gros Mourne National Park, Newfoundland, Canada, by Isabell Holmstedt, SLU.
- p. 21 Figure 3. Landscape of Abisko National Park. Norrbotten, Sweden, by Isabell Holmstedt, SLU.
- p. 24 Figure 4. World map from <https://pixabay.com/sv/v%C3%A4rlden-karta-klot-namn%C3%B6sa-38033/>, dots added by Isabell Holmstedt, SLU.
- p. 25 Figure 5. World map from <https://pixabay.com/sv/v%C3%A4rlden-karta-klot-namn%C3%B6sa-38033/>, dots added by Isabell Holmstedt, SLU.
- p. 26 Figure 6. Rouge National Urban Park sign, by Isabell Holmstedt, SLU.
- p. 26 Figure 7. Map over Greater Toronto Area, Canada, by Isabell Holmstedt, SLU.
- p. 27 Figure 8. Map over Greater Stockholm Area, Sweden, by Isabell Holmstedt, SLU.
- p. 28 Figure 9. Oak woodland with cow grazing, Royal National City Park, Sweden, by Isabell Holmstedt, SLU.
- p. 29 Figure 10. Südgelände, Berlin, Germany, by Isabell Holmstedt, SLU.
- p. 30 Figure 11. Evergreen Brickworks, Toronto, Canada, by Isabell Holmstedt, SLU.
- p. 31 Figure 12. Graffiti in Südgelände, Berlin, Germany, by Isabell Holmstedt, SLU.
- p. 32 Figure 13. Map over Ontario Greenbelt, Canada, by Isabell Holmstedt, SLU.
- p. 33 Figure 14. Map over Rouge National Urban Park study area, Canada, by Isabell Holmstedt, SLU.
- p. 34 Figure 15. Farmland, Rouge National Urban Park, Canada, by Isabell Holmstedt, SLU.
- p. 35 Figure 16. Map of Rouge National Urban Park with new land, by Isabell Holmstedt, SLU.
- p. 36 Figure 17. Rouge Valley Conservation Centre, by Isabell Holmstedt, SLU.
- p. 37 Figure 18. Map of south part of Rouge National Park's trails, by Isabell Holmstedt, SLU.
- p. 38 Figure 19. Bat box, Rouge National Urban Park, by Isabell Holmstedt, SLU.
- p. 39 Figure 20. View over land-fill, Rouge National Urban Park, by Isabell Holmstedt, SLU.
- p. 40 Figure 21. Power lines, Rouge National Urban Park, by Isabell Holmstedt, SLU.
- p. 41 Figure 22. Promotion sign for Rouge Park, by Isabell Holmstedt, SLU.
- p. 44 Figure 23. Map of Royal National City Park, by Isabell Holmstedt, SLU.
- p. 45 Figure 24. Allotment Stor Skuggan, Royal National City Park, by Isabell Holmstedt, SLU.
- p. 46 Figure 25. Swedish Museum of Natural History, Royal National City Park, by Isabell Holmstedt, SLU.
- p. 47 Figure 26. West entrance of Haga, Royal National City Park, by Isabell Holmstedt, SLU.
- p. 48 Figure 27. Map of green wedges, Royal National City Park, Stockholm, by Isabell Holmstedt, SLU.
- p. 49 Figure 28-30. Information signs, the Royal National City Park, by Isabell Holmstedt, SLU.
- p. 50 Figure 31. Map with attractions, Royal National City Park, by Isabell Holmstedt, SLU.
- p. 51 Figure 32. Blue Gate, Southern Djurgården, Royal National City Park, by Isabell Holmstedt, SLU.

- p. 51 Figure 33. Map of Royal National City Park's main areas, by Isabell Holmstedt, SLU.
- p. 52 Figure 34. Oak, Park of Haga, Royal National City Park, by Isabell Holmstedt, SLU.
- p. 52 Figure 35-36. Ground vegetation, Royal National City Park, by Isabell Holmstedt, SLU.
- p. 53 Figure 37. Houses, Southern Djurgården, Royal National City Park, by Isabell Holmstedt, SLU.
- p. 54 Figure 38. View over Skeppsholmen, Royal National City Park, by Isabell Holmstedt, SLU.
- p. 55 Figure 39. Map of the 15 management areas, Royal National City Park, by Isabell Holmstedt, SLU.
- p. 56 Figure 40. The Temple of Cupid and Psyche, Royal National City Park, by Isabell Holmstedt, SLU.
- p. 56 Figure 41. The Temple of Cupid and Psyche sign, by Isabell Holmstedt, SLU.
- p. 57 Figure 42. The Grotto, Haga, Royal National City Park, by Isabell Holmstedt, SLU.
- p. 58 Figure 43. Vegetation, Rouge National Urban Park, by Isabell Holmstedt, SLU.
- p. 58 Figure 44. Farm houses, Rouge National Urban Park, by Isabell Holmstedt, SLU.
- p. 58 Figure 45. Recreational sites, Royal National City Park, by Isabell Holmstedt, SLU.
- p. 60 Figure 46. Large lawn, Stockholm University, Royal National City Park, by Isabell Holmstedt, SLU.
- p. 61 Figure 47. Sign, Rouge National Urban Park, by Isabell Holmstedt, SLU.
- p. 61 Figure 48. Sign, Royal National City Park, by Isabell Holmstedt, SLU.
- p. 62 Figure 49. Rouge Park slogan sign, by Isabell Holmstedt, SLU.
- p. 62 Figure 50. Sign, Rouge National Urban Park, by Isabell Holmstedt, SLU.
- p. 63 Figure 51. Gröna Lund, Royal National City Park, by Isabell Holmstedt, SLU.
- p. 63 Figure 52. Eric Ericsson, Royal National City Park, by Isabell Holmstedt, SLU.
- p. 63 Figure 53. Trails, Royal National City Park, by Isabell Holmstedt, SLU.
- p. 63 Figure 54. Trails, Rouge National Urban Park, by Isabell Holmstedt, SLU.
- p. 64 Figure 55. View tower, Rouge National Urban Park, by Isabell Holmstedt, SLU.
- p. 64 Figure 56. Rouge Beach, Rouge National Urban Park, by Isabell Holmstedt, SLU.
- p. 65 Figure 57. Oak, Royal National City Park, by Isabell Holmstedt, SLU.
- p. 65 Figure 58. Forest, Rouge National Urban Park, by Isabell Holmstedt, SLU.
- p. 65 Figure 59. Meadow, Royal National City Park, by Isabell Holmstedt, SLU.
- p. 65 Figure 60. Agricultural landscape, Rouge National Urban Park, by Isabell Holmstedt, SLU.
- p. 66 Figure 61. Südgelände, Berlin, Germany, by Isabell Holmstedt, SLU.
- p. 67 Figure 62. Graffiti, Südgelände, Berlin, Germany, by Isabell Holmstedt, SLU.
- p. 67 Figure 63. Trails, Südgelände, Berlin, Germany, by Isabell Holmstedt, SLU.
- p. 67 Figure 64. Pole, Evergreen Brickworks, Toronto, Canada, by Isabell Holmstedt, SLU.
- p. 69 Figure 65. Map over green network in Toronto, Canada, by Isabell Holmstedt, SLU.

Background

Since 2008, more than 50% of the world's population live in urban areas (Beatley 2012). Urbanization has led to a development increase a heavy demand for housing in urban areas which threatens the cities green spaces (Beatley 2012). The less nature areas exist in and around cities, the more disconnected people get from them (Trzyna 2014b). Green space is needed for people's well-being and health (Beatley 2012, Annerstedt et al 2012), as well as the environment's integrity (Trzyna 2014b). The green spaces make up one of the building stones in build, and planning, sustainable and liveable cities (Beatley 2012).

According to Beatley (2012), a good example of a city that has an integrated green space network is Stockholm, Sweden, where 40% of Stockholm's areas are parks and green spaces. 40% of Stockholm's green areas is the National City Park (Beatley 2012). The park is also known as the Royal National City Park, RNCP, or the Eco Park (Uggla 2014). In this thesis the name Royal National City Park will be used to distinguish it from the term "national city park". Founded in 1995, it is the first national urban park in the world and it was created to protect green space from exploitation plans (Nordström 2012). The park creates an environment for recreation and recuperation from stress (Nordström 2012).

The Rouge Park, in Toronto, Canada, was also threatened to be exploited. To protect the park, it became Canada's first national urban park on May 15th, 2015: the Rouge National Urban Park.

National parks are today the strongest protection a nature area can have (Naturvårdsverket 2015b). National parks close to urban areas can be, due to their location, called "urban national parks" (UPA 2014), whose main purpose is to preserve biodiversity, but they also offer recreational opportunities in large green areas with nature and wilderness (Trzyna 2014a). "Urban national parks" do not have urban elements in them and there is often a strong border between the surrounding urban area and the park (UPA 2014). "National urban parks" on the other hand is a separate type of designation, which has to fulfil other criteria.

Both the Royal National City Park and the Rouge National Urban Park are examples of large parks in large cities. The importance of this subject is shown by the fact that there has been a conference in Stockholm 2015 called 'Large Parks In Large Cities'. Czerniak (2007) explains the importance of studying existing successful large parks in large cities. A reason, according to Czerniak (2007), is because there are numerous speculations to plan new large parks as they are in vogue again. An aim at the conference is to highlight the large parks importance for the city and its people as recreation and source of biodiversity (Rickegård 2015, WWF 2015). Already in the early 19th century landscape architect Fredrick Law Olmsted stated the importance of large parks. This was in connection with the creation of Central Park in New York, US (Czerniak 2007). When Central Park was founded people idealized naturalistic landscape (Thompson 2012). According to Thompson (2012) the wild nature was found to be both terrifying and delightful at this time period.

This dual view is still, in many cases, true. In a society where more people move into the city, and not developed areas are sought after, there might not always be room for large parks and national urban parks.

According to Jorgensen (2012) urban wildscapes are sometimes the only place within a city where youth and children can experience their own space. The space called urban wildscapes can also be called urban wilderness (Jorgensen 2012). These areas are often forgotten by most of society. According to Jorgensen (2012) there are people from society who normally feel restrained in society that can find freedom and liberation in urban wildness areas. Urban wilderness areas are where natural process has reclaimed the space and society's normal forces are no longer in control (Jorgensen 2012). These areas do not have to be characterized through its vegetation, but rather its functions (Jorgensen 2012).

"Cities should be understood as living organisms with a complex and interconnected metabolism." - Beatley 2012

Through these different areas the urban wildscapes and urban wilderness, the urban national parks, and the national urban parks, people get to experience different environments. Which can lead to an interest of the environment and nature.

“We can’t live on Earth as if we are renting space in nature; we are nature, wherever we live.” - Daniel 2008

Purpose

The overall aim is to study the concept of national urban parks through a comparison between similar concepts and with focus on two “national urban parks” in different countries.

Objectives and questions

The objectives are:

- To explore definitions and concepts of urban wilderness and national urban parks.
- To identify the national urban parks’ objectives in both Canada and Sweden. What law protects them and what are the two parks’ goals?
- To carry out two case studies one in the Rouge National Urban Park in Toronto and one in Royal National City Park in Stockholm and to compare the two cases regarding the parks objectives, and challenges. This includes an investigation of the balance between conservation of the nature, human interaction and recreation in the parks.

Questions

1. What different concepts are there for urban wilderness and national urban parks?
2. How does Canada’s national urban park differ from the one in Sweden?
 - a. What goals do they have, and how are they set into action?
 - b. What is the purpose/s for the parks?

The thesis is structured into a literature review and two case studies of the two parks. In the literature review important terminology is defined. The case studies have been carried out in the Rouge National Urban Park in Toronto, Canada and the Royal National City Park in Stockholm, Sweden.

In the discussion the two parks are compared. The comparison is to identify, analyse and discuss the differences, likenesses, and a point of view. This might lead to ideas and concepts for future urban national parks.

Methods

Literature and theory used

The methods used to search for literature was done as a traditional literature review (Becker et al 2012) made through different search engines. The snowball method (Annersteadt et al 2012) was used to find and collect relevant sources for the literature review. This method is when relevant articles are found from relevant references of the first articles. The literature includes policy documents, scientific articles, books and the parks homepages.

Search engines that have been used are: Epsilon, Google Scholar, Libris, Web of Knowledge and Science Direct.

Holm et al (2002) discuss the importance of using consistent meaning for a term or concept in an international perspective. Some of this thesis terminology are similar to each other. The terms and concepts in this thesis are define and made consistent in the literature review so as to not be misunderstood.

Case studies

Information was also gathered through a case study approach. This was done to observe and capture the uniqueness of the two cases (Becker et al 2012). In an attempt to, as Becker et al (2012) write, “identify cases out of naturally occurring social phenomena”.

Information included documenting activities in the areas (Gillham 2010), taking photos of the landscapes and their wildlife and vegetation, and to experience the areas personally. The information was then used to compare the two study areas and answer the research questions (Gillham 2010):

1. What different concepts are there for urban wilderness and national urban parks?
2. How does Canada’s national urban park differ from the one in Sweden?
 - a. What goals do they have, and how are they set into action?
 - b. What is the purpose/s for the parks?

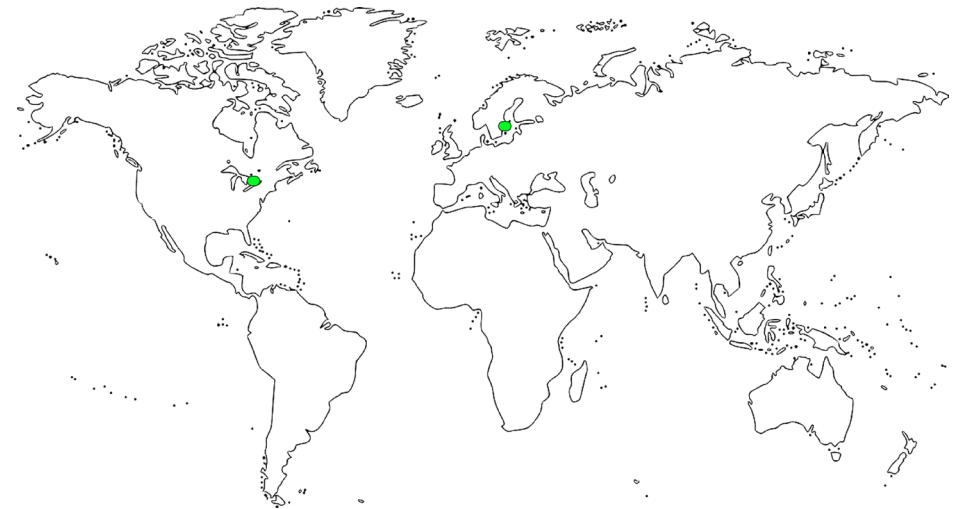


Figure 1: The locations of Royal National City Park in Stockholm, Sweden, and the Rouge National Urban Park in Toronto, Canada.

Site selection

The two chosen sites are (see Figure 1, page 14):

1. The Rouge National Urban Park, North America's first national urban park, situated in Toronto, Canada.
2. The Royal National City Park, the world's first national urban park, situated in Stockholm, Sweden

The sites were selected because they are examples of a rare designation, they have somewhat comparable context

- Both are national urban parks,
- Both are in a developed country,
- In the largest urban area of said country,
- Similar climates, and
- For personal and practical reasons sites were in countries with possibility for site visits.

Site visits are important because, as Daniel (2008) write, without the experience how can we relate to the area. Therefore possibilities for site visits were important.

“We can observe all we want, but we will not see anything to which we cannot relate. And we cannot relate to that which we have not experienced.” - Daniel 2008

Study areas

Both parks are chosen as study areas.

For easier comparisons a list of four topics has been chosen to highlight different issues within the sites. Through the topics and themes, the issues are categorized. The themes compare correlated information about the two parks in different areas of interest.

The four themes are:

1. Information – how is information distributed (examples include websites about the areas, signs in the areas etc), what is the information about, is it enough of information for the public to learn about the areas.
2. Recreation and accessibility – activities allowed in the park, e.g.: hiking, bike, horseback riding, swimming etc. What attractions are there for family, youth and elderly? Are there transit routes to the park and if so what forms are available; buses, train, streetcars etc. Is it more accessible with personal vehicles and parking? How accessible are the trails in the park? And for whom are the trails made for?
3. Nature – what flora and fauna can be found in the area, and how is it protected?
4. Management and maintenance – how is the park maintained and is it visible walking around.

Site visit

1. Rouge Park, Toronto, Ontario, Canada, March of 2014. Day trip partly with guide, visited most of points of interest, according to Rouge Parks own website.
2. Rouge Park, Toronto, Ontario, Canada, April of 2014. Day trip, visited the rest of points of interest and other areas so all different biotopes had been seen.
3. Royal National City Park, Stockholm, Sweden, April of 2014. Two days trip, visited North Djurgården and South Djurgården.
4. Royal National City Park, Stockholm, Sweden, October of 2014. Two days trip, visited Haga and South Djurgården.
5. Rouge National Urban Park, Toronto, Ontario, Canada, June of 2015. Day trip, to revisit one of the trails during another part of the year.

Site visits were determined through a list of what is most important within the study areas. Due to time restriction site visits could not be done throughout all of the study areas. One visit per park was planned to begin with. This changed when more time got assigned on site visits: three visits could be made at the Rouge National Urban Park and two visits to the Royal National City Park.

The site visits highlight what is most valuable in the park through a natural, cultural and recreational point of view. During the site visits traces of the four themes were looked after.

The first visits to Rouge Park, Toronto, Canada, occurred during March 2014. During the second visit, April of 2014, an interview took place with two managers from Rouge Park office. The interview was about how they manage the park and what they are doing to transform it from a protected area to Canada's first national urban park (see page 17 for more details on the interview). The third site visit to the Rouge National Urban Park was in the June of 2015.

The two visits to the Royal National City Park, Stockholm, Sweden were carried out in 2014. Both visits occurred over two days. During the site visits three of the four main areas were reviewed. A workshop was

attended to gather more information, in April of 2014, about the cultural landscape in the Royal National City Park.

An important aspect of how the two sites were investigated was that an interview took place at the Rouge National Urban Park but not at the Royal National City Park. Instead the workshop was attended at the Royal National City Park. Which means the collection of information differ between the two parks. The decision of not having an interview at the Royal National City Park was because the workshop gave a lot of information correlating to the information gathered from the interview at Rouge Park.

Disclaimer: 'Rouge Park' is used with regards to before the park became a national urban park. 'Rouge National Urban Park' is used with regards to after the park became a national urban park in 2015.

Interview

The interview regarding Rouge Park took place in Canada in April 2014, with two staff members. The interview gave an insight in the development of Canada's first national urban park, its management, and what can happen with the pressure of the public and its interests. The interview occurred before the Bill C-40, the Rouge National Urban Park's Act, had been legalized. Therefore the information regarding the Bill C-40 may be a bit out dated. Updated information can be read in part 'Rouge National Urban Park', subpart 'Rules and Regulations' in this thesis.

A text composed from the answers to the questions can be read later in the part 'Rouge National Urban Park', subpart 'Interview'.

The interview questions were:

1. What is the difference between a national park and national urban park?
2. How did you start thinking of making a national urban park?
3. When did the Toronto and Region Conservation Authority, TRCA, take over the management of Rouge Park?
4. How is the process of turning Rouge Park into Canada's first national urban park going?
5. How is it to cooperate with so many stakeholders?
6. What was the thought behind the national urban park?
7. What is the difference between national urban park and a regular park in the city? Or other protected parks?
8. What is the concept for the park?
9. What are the goals for the national urban park concept and how are they going to be made into practice?
10. Have you heard about the Swedish national urban park?
11. Have you taken any guidelines from the Swedish national urban park? Have someone visited it, to get some inspiration?
12. What human activity will be allowed inside the park that is not already there today?
13. What budget does the park have?

Workshop

The workshop attended was with a group of stakeholders to the Royal National City Park, Sweden, in April, 2014. Among them is people from the Country Administration Board of Stockholm (Länsstyrelsen i Stockholm).

The workshop was called "Finding your way – the Royal National City Park hidden gems" (Hitta rätt – Nationalstadsparkens okända guldgrubbor). This workshop was the second of two. This focused on the cultural values in the park. See definition in section 'National urban park'. No questions in advanced were written.

Literature review

This literature review will first explain some legislation that is important for this thesis.

Terms used in the text:

‘Urban green space’ will, just as Mambretti (2011) use it, mean non-built open space, examples include gardens, squares and vegetated paths.

‘Urban parks’ mean park in urban areas with lawn, flowerbeds, playgrounds and usually have a naturalness index on three or less (Trzyna 2014b). Index of naturalness is explained in the National Park subpart.

Comparing Sweden and Canada regarding legislation of nature conservation

Sweden and Canada have different legislation regarding nature conservation. Definitions affecting the national urban parks are explained here. This section of the literature review will explain how the different legislations are interpreted. The part is divided into smaller paragraphs. Each topic is divided as follows: 1) general explanation, to get to know the topic, 2) Canada, about the topic from a Canadian point of view, 3) Sweden, about the topic from a Swedish point of view, and 4) a comparison between the countries.

Freedom to roam and crown land

Public land is when the government, local, federal, etc, owns the land. There are countries that have other terms for public land. An example is Crown land, which you can find in Commonwealth countries, formally territories of the British Empire (Neimanis 2013, Ontario 2014).

‘Freedom to roam,’ ‘everyman’s right,’ ‘right of public access to the wilderness’ or the ‘right to roam,’ ‘allemansrätten,’ is a right found in Nordic countries (Bengtsson 2014). Similar rights also exist in Scotland, England and some other European countries (National Archives 2000,

National Archives 2003, Sandell & Svenning 2011). It is when the public has the right to access privately owned land and forest with exceptions. Some examples to these exceptions are developed land, realty and gardens. Freedom to roam gives access but with responsibility, no property is to be damaged. It is usually used to access nature (Bengtsson 2014).

Canada does not use the concept “freedom to roam” in the nordic sense. The public is guaranteed by law access on public land, also called “crown land”. Crown land is owned or administrated by the Canadian federal government or a subordinate provincial government as representative of the Crown of the United Kingdom of Great Britain and Ireland (Neimanis 2013). To illustrate the extent of public access opportunity in Canada consider that 89% of the total landmass in Canada are classified crown land. Ontario province, Canada’s most populous province, itself is made up with 85% crown land, making it a good opportunity for recreation and tourism (Ontario 2014). The remaining landmass is privately owned (Ontario 2014). In Canada the national parks that are on crown land are among the largest continuous parcels of crown land (Ontario 2014). The larger parts of the crown land, and by extension larger national parks some are up to 1,878 km² (Pukaskwa National Park), is situated in the north of Ontario, away from the population centres near the border to the United States further south (Ontario 2014). Crown land is held with a variety of legislations, including the Public Lands Act (Ministry of Natural Resources 2012) and the Provincial Parks and Conservation Reserves Act (Ontario 2014).

In comparison with Canada’s 11% privately owned land, Sweden has more than four times higher privately owned land with 48% (SCB 2013). The other land ownership in Sweden is trade and industry 32%, public institutes 15% and associations and religious communities 5%. The private landowners own mainly agricultural land and forested land (SCB 2013). A large part of the land that trade and industry own is also agricultural and forested land (SCB 2013). The public institutes include, among others, municipalities, the Environmental Protection Agency, and

the National Property Board of Sweden (Statens fastighetsverk 2015). In Sweden most land-use planning is made at the municipality level (Fredriksson et al 2013).

The Environmental code (Miljöbalken 1998) state that people who use freedom to roam have the right to access nature, but have to show caution and care to the nature and people living in or owning the land you visit (Miljöbalken 1998).

Freedom to roam is an old custom in Sweden, that is guaranteed by the constitution (Bengtsson 2014). However there are restrictions. For example, access is forbidden when property or vegetation, especially crops, can be damaged. It also means that you do not pick the protected species and do not litter. Freedom to roam only refers to land that is not private spheres such as buildings and gardens. Walking into buildings and gardens is trespassing (Bengtsson 2014). You should not inconvenience people, animals or nature in the area you are walking (Naturvårdsverket 2015a). The land can have superseding laws to



Figure 2: A newly made path in Gros Morne National Park, Newfoundland, Canada.

freedom to roam often in natural areas. Example of a superseding law is national parks, because of the right of public access to the countryside in Sweden, access to nature in Sweden is usually free and no entrance fees are taken (Naturvårdsverket 2015a). If the landowner has made an installation, it can be a reason to let the landowner take a fee (Bengtsson 2014).

The biggest difference between accessing nature in Sweden and Canada is the ownership of the land being accessed. In Sweden nature is accessible despite varied ownership and administrators (SCB 2013). In Canada Crown land and the resources that lie on or in it are always owned or administrated by federal or provincial government (Ontario 2014). Private property is not accessible for the public according to the Public Lands Act (Ministry of Natural Resources 2012). Only 15% of Sweden's landmass is administrated by public institutes (SCB 2013). The accessibility for people doesn't differ that much between Canada and Sweden. What is different is that while it is free to hike in the forest and nature areas in Sweden, most national parks in Canada have entrance fees (Department of Justice 2015). As Figure 2 show the entrance fee can be used for elements in national parks such as paths. Bengtsson (2014) explain that freedom to roam in Sweden makes it illegal for the owner of the land to take out a fee, exceptions are land with installations.

Another difference, there is one rule different for Canadian residents and non-residents on Crown land (Ontario 2014). While through freedom to roam it is the same for residents and non-residents in Sweden (Bengtsson 2014). Canadian residents can camp for free up to 21 days, on camping allowed places (Ontario 2014). Non-residents need a camping permit exception is when a resident accompanies. Other restrictions are the same for residents and non-residents in Canada (Ontario 2014).

Freedom to roam is a constitutional right in Sweden (Bengtsson 2014), compared to Crown land in Canada that is held through the Public Land Act and Conservation Reserves Act (Ontario 2014).

National Park

What is the definition of a national park in an international perspective? According to International Union for Conservation of Nature, IUCN (2014) a national park is a type of protected area. A protected area has the following definition:

“A clearly defined geographical space, recognised, dedicated and managed, through legal or other effective means, to achieve the long term conservation of nature with associated ecosystem services and cultural values.” - Dudley 2008

According to Deguignet et al (2014) the awareness of importance for protected areas have risen in government worldwide, and protected areas have increased.

Protected areas according to IUCN (2014) can be defined according to its management objectives. Dudley (2008) explains to remove ambiguities between different national categories of protected areas. The category system is a guideline to have the same criteria's for similar protected areas (Dudley 2008). The term national park is older than the category system. Internationally some of the older national parks have other management objectives, and natural characters than those IUCN categories as characters for a national park. This means they are in categories other than the one meant for national parks (Dudley 2008). Most national parks are categorised into category II is:

“Large natural or near-natural areas protecting large-scale ecological processes with characteristic species and ecosystems, which also have environmentally and culturally compatible spiritual, scientific, educational, recreational and visitor opportunities” - IUCN 2014

In other words category II's (IUCN 2014) primary objectives are:

- Protecting the area's natural biodiversity,
- Protecting its ecological processes and structure, and
- Provide education and recreation.

The first national park founded was Yellowstone in the USA it was established in 1872 (Mangan 2015, Patin 1999, Löfgren 2008). It was Yellowstone's extraordinary natural characteristics which became national heritage and justified the park bill (Patin 1999). Being the first national park, it became the model for future national parks. The criteria were to leave the extraordinary nature unspoiled for the benefit and enjoyment of this and future generations (Löfgren 2008, Mangan 2015). Patin (1999) explains that because the USA's elite did not have a strong national cultural history with architecture, literature, etc they wanted something to treasure. The landscape became the national pride (Patin 1999). The USA Army had the responsibility for the park. They put a stop to exploitation of the park (Dilsaver & Wyckoff 2005). The National Park Service took over the responsibility in 1917 (Patin 1999).

Canada followed suit and established Banff National Park in 1885 (Parks Canada 2015). The hot springs and their surroundings held a high nature value (Parks Canada 2015). The surroundings were found so beautiful that the area was made an accessible recreational park for the public rather than becoming privately owned. In 1887 the bill to make Banff National Park was passed in the House of Commons (Parks Canada 2015). The Act, according to Parks Canada (2015), stated that nature areas was a part of Canada's riches and should belong to the people of Canada. The National Park of Banff is situated in Alberta, on the eastern slopes of the Rocky Mountains (NE 2015). The park is a part of a large-scale ecosystem made for grizzly bears and wolves, between Yellowstone, USA, and Yukon, Canada (Aengst 2000).

It was in Canada that the world's first national parks administration was established, the Dominion Parks Branch, in 1911 (McMamee & Finkelstein 2014). The administration developed during 1930 the first National Parks Act, today Canada National Parks Act. It is Parks Canada that administers Canada's park system (Canada Heritage 2008, Parks Canada 2015). Their aim is to protect and present Canada's natural and cultural heritage on behalf of its people, for its people and future generations (Parks Canada 2015).

Canada is divided into 39 different natural regions, with different natural characteristics (Parks Canada 2015). 28 of these are protected within a national park or a national park reserve. A national park reserve is an area that during a trial period can be claimed before it is turned into a national park (Department of Justice 2015). During the time of the park being a reserve it still is protected as a national park (Department of Justice 2015). The national parks not only help to preserve the biodiversity but also to help the local community's economy and raise the tourism. McMamee & Finkelstein (2014) write that many of the national parks protect endangered species both flora and fauna. The aim to designate areas as national parks is to prevent exploiting the landscape and from extensive anthropogenic interventions. Restoration changes are allowed (McMamee & Finkelstein 2014). Parks Canada (2015) explains that a goal for national parks in Canada is to keep the parks 'ecological integrity'. Ecological integrity is when the park has "characteristic of its natural region" and is "likely to persist" (Parks Canada 2015). This includes the ecological systems components, biodiversity, and processes (Department of Justice 2015, Parks Canada 2015).

In Canada there are today 44 national parks and reserves (Parks Canada 2015). A national park in Canada has to (Ballard et al 2013);

- Protect Canada's 39 different natural regions and its biodiversity,
- Raise the public's awareness and interest of the country's nature values, and
- Provide value to the local surrounding, tourism, and recreation.

According to the Swedish national encyclopaedia (2015) a national park is a "larger area whose natural nature is to be preserved" (translated from Swedish). This definition of a national park is very general. The Swedish Environmental Code (Miljöbalken 1998) has a similar, though more precise, definition for national parks:

"A land or water area that belongs to the State, after approval of the Swedish parliament can be declared by the government as a national park in order to preserve a larger continuous area of a particular landscape in its natural state or in an essentially unaltered version."

The Swedish landscape in the early 20th century represented the connection between people and their nation (Mels 2002). Just as the USA, people in Sweden, related to the unspoiled nature as a link between past, present and future generations (Mels 2002). It was the explorer Nordenskjöld, who introduced the idea to protect the unspoiled nature of Sweden after one of his travels to the USA (Löfgren 2008). According to Mels (2002) Sweden followed the US concept. It was also inspired by German conservationism (Mels 2002). Nordenskjöld campaigned for "riksparker", National parks, from around 1880 (Löfgren 2008). Not until a German professor, lectured on the importance of protecting unspoiled nature, did the Swedish Society for Anthropology and Geography listen. A bill to protect the unspoiled nature in Sweden and its nature values soon followed (Löfgren 2008). Sweden was the first country in Europe to install national parks (Löfgren 2008, Mels 2002). Sweden got its first national parks in 1909 (Hanneberg and Löfgren 2010). One of the first national parks is Abisko National Park, seen in Figure 3. It was during a period of time when the unspoiled nature in Darlecarlia (Dalarna) was



Figure 3: This is an example of the landscape in one of Sweden's first national parks: Abisko.

seen as an example of pure Swedish nature (Carr 2013). Darlecarlia was seen as an inspiration, it was the ideal, the Swedish idyll (Carr 2013). The same terminology was used as in the USA concept (Mels 2002, Löfgren 2008). According to the government the term “national park” served the purpose better than other proposed concepts. The Swedish government reasoned that the term made people feel patriotic (Mels 2002, Carr 2013). National park is a symbol to unify Sweden and its people (Mels 2002, Löfgren 2008) then and now (Carr 2013).

The national parks are today taken care by the Environmental Protection Agency (Naturvårdsverket), but it was not until 1967 that the agency was founded. Before the parks were managed by Domänverket today called Sveaskog. In Sweden it is common that private actors own forest and agricultural lands (SCB 2013). Therefore it is necessary with the freedom to roam rule. Exceptions are national parks.

According to Hanneberg and Löfgren (2010) national parks in Sweden was originally protected for their esthetical and tourist values. Löfgren (2008) write that the first national parks differed from each other because the people deciding on what area to choose did not have the same vision of what unspoiled nature looked like. Only in the 1980's was a proper inventory made to evaluate land coherently (Löfgren 2008). The requirements for an area to become eligible for park status for Swedish National Parks are (Löfgren 2008):

- Represents unique Swedish landscape types, with significant nature conservation value and high biodiversity,
- Minimum area of 1000 ha (2471 acre),
- Main part or core is unspoiled nature, and
- Valuable for science, recreation, to spread information and knowledge, and tourism as a point of interest, which makes them good for local business.

Criteria for national parks are different worldwide (Dudley 2008). IUCN have set up area guidelines for establishing a national park, including aims and criteria. These are not being followed worldwide. A reason is national parks were established before the guidelines. Some national parks fit better into other categories (Dudley 2008).

Comparing the goals for national parks in Canada and Sweden these major objectives overlap:

1. Protect their different natural regions and unique landscapes, the high biodiversity, and
2. Raise the public's awareness and knowledge, for science, recreation and tourism of the country's nature values, which makes it good for local business.

National parks in Canada and Sweden accommodate human recreation such as hiking, and other light activities that limit disruption to sensitive areas. Both have facilities such as visitor centers. These inform the public about the area and its unique values (McMamee & Finkelstein 2014). In any Canadian or Swedish national park there is not only a visitor center but other informative facilities like notice boards and education centers (Abelin 2008). There are also a lot of activities that are forbidden, including hunting, ice fishing and motorized off-road travelling (Parks Canada 2015, Hanneberg & Löfgren 2010).

Over a hundred years after the first national park was established it remains the strongest form of protection a nature area can have. Which is true for Canada as well as Sweden (Abelin 2008). Even though this is the strongest protection, national parks still encounter challenges. One of the challenges is the intrusive human activity on the borders of the parks (UPA 2014).

National urban park

More people are moving into the city (Beatley 2012). Since 2008 more than half of the human population has moved into urban areas (Beatley 2012). The values of nature areas in and close to urban areas (Skärbäck & Grahn 2012), and their protection, are important topics (Beatley 2012). Studies show the importance of green space for humans for their health and wellbeing (Mambretti 2011, Annerstedt et al 2012, Brånhult 2010, Skärbäck & Grahn 2012). It's important and benefitting, to experience and spend time in nature (Brånhult 2010, Thompson 2012, Trzyna 2014b, Skärbäck & Grahn 2012). Trzyna (2014b) explains that urban protected areas can be what reconnect people with nature. Having a nature area in the city helps people to de-stress (Skärbäck & Grahn 2012), to learn more about nature, to be less critical with the thought of protecting nature and to give people, who can't afford traveling far away, closer and easier access (Trzyna 2006a).

Annerstedt et al (2012), Beatley (2012) and Trzyna (2014b) agree on the importance of green and nature areas are for humans. The difference is Beatley's (2012) green areas are parks, churchyards, schoolyards, etc. While the areas Trzyna (2012b) mention are the larger nature areas, nature conservation etc. For Annerstedt et al (2012) the term urban park meant areas that largely contain vegetation or water, though the areas could range in size from large urban parks to smaller pocket parks.

There has been an increase of terminology regarding nature in urban areas over the last few decades. Some of these terms are: urban wilderness, urban protected areas, urban national park, national urban park and national city park. Urban wilderness will be addressed in later section further down.

An "urban protected area" is an area situated close to or in an urban area, and that fit their description for protected areas (see definition in chapter 'National Parks' above) (IUCN 2014, Trzyna 2014a) and/or are threatened by urban sprawl and are protected for their natural and cultural values (Trzyna 2014a, 2014b).

These areas often rank high on the "index of naturalness" scale, with a 6-8 of 10 (Trzyna 2014b). This scale developed by Machado describes an area's nature (Trzyna 2014b). If it is a 5 or less it is a man-made area. With a 6 or more the area has a higher biodiversity and natural system with low impact from humans (Trzyna 2014b). Regular urban parks with lawns, playgrounds, and sport attractions, often get 3 or less (Trzyna 2014a).

Criteria urban protected areas must fulfil these criteria according to Trzyna (2014b) are:

- Meet IUCN's definition of a protected area, and
- Be situated in or close to a larger populated area.

Characteristics for an urban protected area that distinguish them from other protected areas are (Trzyna 2014a):

- Visitors that are frequent, diverse and less experienced with nature,
- Have many stakeholders,
- High risk of exploitation,
- Affected human activities such as littering, noise pollution, etc, and
- Affected by urban edge problems such as fire, and air and water pollution.

In the category system, urban protected areas fit into category II, 'National Parks', or in category V, protected landscape and seascapes. Like with national parks different urban protected areas can fit in different categories (Trzyna 2014b).

The Urban Protected Areas Network (UPA 2014) is a collaboration between larger cities in Brazil, India, Kenya and South Africa, and their national parks. Map with said cities and national parks can be found in Figure 4, page 24. It was created in 2009, because in certain regions urban areas started to crawl closer to the national parks. Since problems arise at the border between the park and the city, the goal is to keep urban elements out from the parks (UPA 2014). With urban expansion, the parks boundaries and ecological integrity are threatened (UPA 2014).

Other threats or problems are crime, when vegetation is used as cover for criminal activity, and fire within the park it is necessary for managing the vegetation but can scare the locals (UPA 2014). The national parks that are in the program are (UPA 2014):

- Nairobi National Park, Nairobi, Kenya
- Tijuca National Park, Rio de Janeiro, Brazil
- Sanjay Gandhi National Park, Mumbai, India
- Table Mountain National Park, Cape Town, South Africa

Some of these urban national parks are mentioned in the event background for the conference “Large Parks in Large Cities”, in the Royal National City Park in Stockholm held September of 2015 (Riccegård 2015, WWF 2015). The conference’s objective is to shine a light on urban parks of different sort, all from regular parks to national parks in urban areas (Riccegård 2015). As UPA (2014) has done, the conference aims to create a network of people working with large parks around the world (Riccegård 2015, WWF 2015).



Figure 4: The four national parks and their cities that make out the network UPA, Urban Protected Area Network.

According to Trzyna (2014b) the term urban protected areas, law wise, have no international legal recognition. Trzyna (2014b) state that there are a few exceptions such as Finland’s National Urban Parks. But neither Canada’s Rouge National Urban Park, nor Sweden’s 20 year old Royal National City Park are mentioned by Trzyna as examples of national urban parks. As a disclaimer Trzyna (2014b) state that updates will be needed as more experiences from countries not yet covered are included. Rouge National Urban Park was not designed until 2015 which can be the reason it was not included. In the Royal National City Park’s case it is unclear why it was not included. For a deeper discussion see the chapter ‘Discussion’.

For an area to become a national urban park in Sweden these criterias must be meet according to Nordström (2012):

- an area that has unique historical landscape with both natural and cultural significance,
- an area that is valuable for the city’s ecology,
- for recreation, locals and tourists, and
- the area have to be in an urban environment.

These criteras were produced in a specific situation, during the founding of the Royal National City Park, though these guidelines are formulated in a general way. It is uncertain if they are meant to be applied generally in an international perspective.

Finland founded its first national urban park in 2001 and have today 8 national urban parks (Ministry of Environment 2014), the criteria are similar to the national urban park in Sweden (Länsstyrelsen i Stockholms län 2014). All ten national urban parks sites can be found on the map in Figure 5, page 25. The national urban parks are important for a sustainable city planning according to the Ministry of Environment (2014). Since 2002 Finland has an Action Plan for Sustainability (Beatley 2012). It includes guidelines for ecological, economic, social and cultural sustainability in city planning. Their cities may not decrease the quality of the environment (Beatley 2012).

In a forest city the nature is integrated into the city, with trees, gardens and parks (Berleant 2005b). The forest city is, according to Berleant (2005b), a metaphorical term, of one way to design urban areas. Examples of forest cities are Munkkiniemi and Tapiola both are situated in Finland (Berleant 2005b). Konijnendijk (2008) explain that the national urban parks in Finland often have a forest city as the core element.

Gateway National Recreation Area, south of New York, USA, is referred to as an urban national park (Foresta 2011, National Park Service 2015). The terms national park and urban park is also used in association to Gateway (Foresta 2011, National Park Service 2015).

The term national city park is used in Sweden and Finland as synonym for national urban park. According to Nordström (2012) the national city park is a protected area in an urban environment, protecting its ecology, the natural and cultural values, but with the emphasize on the cultural landscape. UNESCO (2015) describes a cultural landscape as:

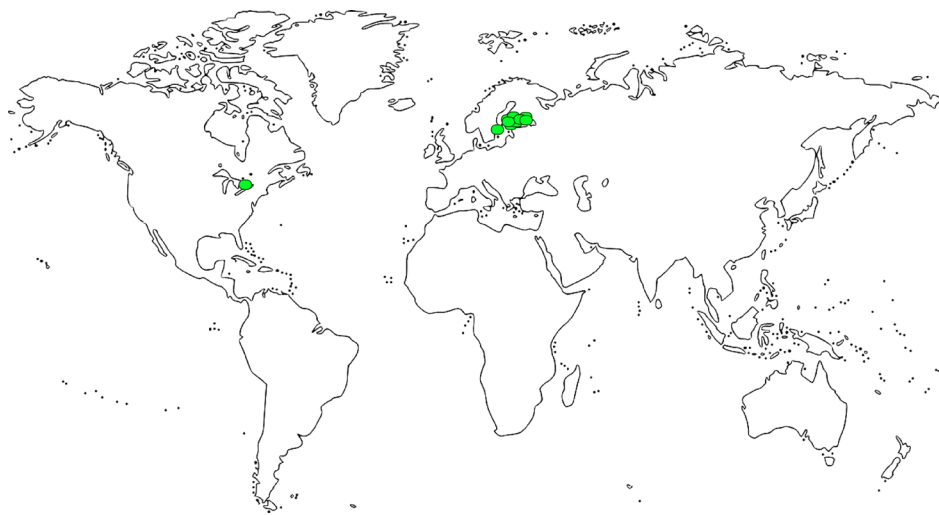


Figure 5: The two national urban parks in Canada and Sweden together with Finland's eight national urban parks.

“...a diversity of manifestation of the interaction between humankind and its natural environment.”

Schantz (2006) state that ownership of land and exploitations have different conditions in a national park and a national urban park. A national park needs to be owned and managed by the same organization, while it is not the case with a national urban park. Which is according to Schantz (2006) what differs the two terms from each other. Another difference between national parks and national urban parks is that a national park represent areas with as little human influence as possible which means no, or few, cultural landscapes.

The term ‘national urban park’ is used more frequently, regarding the Royal National City Park in Stockholm, Sweden (Uggla 2014, Elmqvist et al 2004), Finland’s eight parks (Trzyna 2014b), and the Rouge National Urban Park in Toronto, Canada (Parks Canada 2015), and will be the term used in this thesis. While there are articles where ‘urban national park’ is used regarding the Royal National City Park in Sweden (Erséus et al 1999), in this thesis ‘urban national park’ will refer to national parks in urban areas, no urban elements in said park, as UPA (2014) use it.

National Urban Park in Canada

“The goal for natural heritage conservation in Rouge National Urban Park is for it to be a place where native ecosystems are conserved to allow people to connect to nature in an urban setting.” - Rouge National Urban Park Initiative 2012

Rouge National Urban Park is Canada’s first national urban park designated in May 2015 (Parks Canada 2015). Its sign for the Rouge National Urban Park can be seen in Figure 6, page 26, as well as other informational signs. Before it became Rouge National Urban Park it was an urban park called: Rouge Park, ‘Canada’s premier urban wilderness park’ (Rouge Park 2015). The Rouge National Urban Park is protected through Bill C-40. Bill C-40 is an “Act respecting the Rouge National Urban Park” (Parliament of Canada 2015). The Government has ensured the protection of Rouge Park for this and future generations (Parks Canada 2015).

Situated in Greater Toronto Area, the Rouge National Urban Park is situated close to 7 million people about 20% of Canada's population (Parks Canada 2015). Map over Greater Toronto Area and surroundings see Figure 7. As Rouge Park it had a size of 58 km² (Rouge Park 2015), an extra 21 km² land will be added to Rouge National Urban Park from the government if certain criteria are met (Editorial 2015, Staff 2015). These criterias are listed under the subtitle 'Rules and Regulation'. The park is a bridge to gain interest and discover Canada's nature (Rouge National Urban Park Initiative 2012). It is meant to inspire people to learn more and to value the nature they have (Parks Canada 2015). It will be an example how urban areas can coexist with nature areas, just like



Figure 6: The Rouge National Urban Park sign (green with Parks Canada's beaver insignia) can be found outside the visitor centre.



Figure 7: Rouge National Urban Park in a south Ontario scale.

with the urban national parks, UPA (2014). The park strives to become a “people’s park” which means a park for people to visit for recreation and to enjoy (Rouge National Urban Park Initiative 2012). Unlike National Parks in Canada, Rouge National Urban Park will not have an entrance fee (Parks Canada 2015).

The four cornerstones for Rouge National Urban Park are (Lively 2015):

1. Conserve natural heritage,
2. Connect people to nature and history,
3. Support a vibrant farming community, and
4. Celebrate cultural heritage.

One example of connecting people to nature is through the farms and agricultural land that can be leased within the park (Parks Canada 2014), which will grow ecological food that can be bought through farmer’s markets. Other examples will be community gardens, where people can grow their own food (Rouge National Urban Park Initiative 2012).

In Rouge National Urban Park agricultural landscapes still in use is found. This is the first time active agricultural land is protected in a Canadian federal park (Parks Canada 2015). Because it is in use it is not included as a cultural landscape in the management plan (Parks Canada 2014). Rouge National Urban Park’s cultural landscapes include agricultural landscape patterns, rural settlement, small rural villages and old roads (Parks Canada 2014).

Rouge Park would not exist without the activities from the community (Rouge National Urban Park Initiative 2012). Rouge Parks network is large and diverse; some of the organizations are from not-for-profits, public, community or corporate (Rouge National Urban Park Initiative 2012). People, organizations and government all worked together to establish the former Rouge Park, in 1995, which protect parts of the ecosystem in Rouge Valley (Parks Canada 2014). There was already support to protect the park in the middle of the 1950’s (Rouge Park 2014). In a public poll 2010, 88% of the public supported the concept of establishing Rouge Park as Canada’s first national urban park (Rouge National Urban Park Initiative 2012).



Figure 8: The Royal National City Park in the Great Stockholm Area scale.

National Urban Park in Sweden

The Royal National City Park is the world's first national urban park (Beler et al. 2006, Holm & Schantz 2002). Map of the park in a Greater Stockholm Area surrounding see Figure 8, page 27. The Swedish formal name is Nationalstadsparken, the National City Park (Uggla 2014). The park has also been labelled Ekoparken, the Ecopark, with all three names in use (Uggla 2014). To not confuse the park with the general term national city park, the name Royal National City Park will be used in the thesis. Schantz (2006) explain that since the term national city park/national urban park has not been used before, there has not been a clear prototype in the world earlier. Which makes the Royal National City Park the first of its kind (Schantz 2006, Elmqvist et al 2004, Ernstson & Sörlin 2009), even though it is clear that national parks have been located close to urban areas before the national urban park in Stockholm was founded (Schantz 2006).



Figure 9: The Royal National City Park is famous for its many oak woodlands. Here with a group of cows grazing.

The Royal National City Park is a part of the specified national interest area that is in the act of the Environmental Code, because of its unique character and values (Naturvårdsverket 2005). One of these unique characteristics of the park is the oak woodlands see Figure 9, which is one of the signature trees in the park. The most important values and aspects of the park's character have been formulated into five cornerstones (Nordström 2012):

1. Royal influence and Sweden's history,
2. Biodiversity,
3. Public entertainment /Popular amusement,
4. Knowledge, and
5. Health and fitness.

According to Miljöbalken chapter 4 (1998) the Royal National City Park is a "national interest area". The Royal National City Park was classified, in the 1960's, as a cultural environment of national interest (Schantz 2006). During this time new laws emerged because of the land use conflicts that had started to emerge (Schantz 2006). In the 1990's, even though the area was protected, plans to exploit it was made. The landscape's value was recognised by the citizens and measures to stop the exploiting were made, leading to the founding of the Royal National City Park (Schantz 2006).

Holm and Schantz (2002) explain that a "national interest" protection cannot stop urbanization, but with the "national urban park" protection the area could be protected against urbanization. The difference is in a national interest area no "palpable harm" may be done, while in a national urban park area no "harm" may be done (Schantz 2006). Even if this is the case the national urban park designation is not a 100% (Holm et al 2002). Critics were doubtful of the designation's ability to prevent development due to large gaps in regulations. The law introduces "a strong protection in a weak situation" (Holm et al 2002).

A national city park is a "valuable often strongly culture affected nature area in the city that has the same protection as a national park"

(translated, by author, quote from NE 2015). An example of a different type of landscape that can be found in a national city park, or a national urban park, is cultural landscapes. These can be found in the Royal National City Park in Stockholm (Nordström 2012). Plieninger & Bieling (2012) explain that cultural landscape show the development of human society over time. According to UNESCO (2015) it is a representation of the combined works of human and nature. Their definition of landscape is “an area, as perceived by people, whose character is the result of the action and interaction of natural and/or human factors” (Plieninger & Bieling 2012).



Figure 10: The Nature-Park Südgelände, Berlin, Germany offers a diverse experience of both natural and cultural landscapes.

Urban Wilderness

“Civilization made possible the concept of wilderness” – Daniel 2008

Wilderness, according to Daniel (2008), is untouched by humans in its purest state. The concept is difficult to define with all its multi-meanings and layers. Wilderness is uncontrolled, unpredictable and indifferent to humans (Daniel 2008). It can both be “natural and unnatural, owned and un-ownable”. A landscape’s primary point in its dynamic process of continuous change is wilderness (Daniel 2008). Trzyna (2014b) describes wilderness as an uninhabitable area to which humans only visit. According to Berleant (2005b), wilderness as a term has gone from being feared to having a positive meaning: of an area that should be appreciated and protected. To keep the human mind-set interested in wilderness it is importance to keep up its allure (Daniel 2008). Through upholding the mystery people will want to protect wildlife and the natural ecosystems (Daniel 2008).

“Romantic notions of the wider countryside, the rural and the uncultivated landscape embraced both the delights and the terror of wild nature” - Thompson 2012

Wilderness combined with ‘urban’ becomes a metaphorical term, ‘urban wilderness’ (Berleant 2005b). The term urban wilderness is a contradiction within itself (Daniel 2008). In an urban context, according to Daniel (2008), wilderness is defined as ‘untamed’ or ‘savage’ instead of untouched nature. Urban wilderness, according to Daniel (2008), is a place without human interaction that is heading back to its wild state. Berleant (2005b) argue that wilderness is associated negatively in an urban setting. According to Jacobsen (2012), seven years later, urban wilderness is often used constructively, for example Südgelände in Berlin, Germany (see Figure 10).

“This inquiry into the aesthetic of the city has, therefore, two objectives. One is to explore the dimension of urban life suggested by a still different metaphor, 'wilderness,' in the hope of discovering what distinctive vision of urban life the 'wilderness city' can provide. The other is to use this investigation to uncover something about the meaning and function of metaphor – more exactly, about metaphorical experience”
- Berleant 2005b

Another similar term used for urban wilderness is urban wildscapes. Urban wildscape is a urban space, that is left to its natural process without any human interaction (Jorgensen 2012). According to Jorgensen (2012) urban wildscapes' does not have a defining character, but rather is a spectrum that reaches from wilderness to organized space. What makes, Jorgensen (2012) write, a space into an urban wildscapes is its function rather than vegetation. Gobster (2012) explains an urban wildscape as a “living landscape” responding to its conditions from living in a city. The term is used to highlight a certain landscape quality (Jorgensen 2012). Gobster (2012) divide urban wilderness into four subcategories: filled-in nature, elevated nature, in-between nature and recovered nature. The first subcategory are places in-between other spaces (Gobster 2012). Second subcategory includes slops and raised spaces no longer in use. The third subcategory can be isolated edges, small patches that often are classified as burdens and unmanaged. Gobster (2012) argue that the fourth subcategory, recovered nature, are larger abandoned spaces where the nature has taken over and these areas could help to heighten the nearby areas ecological values as Brickworks, Figure 11 does.

Globally urban wildscape is not an established term (Jorgensen and Keenan 2012). In the 1970-80's a wave with wildscape inspired design that went in and out of style (Jorgensen 2012). It is difficult to use urban wildscapes in planning purposes because, as a term, it is not “formally recognized”. Jorgensen (2012) explains if the same processes that can be found in wildscapes would be used in planning it would lead to the creation of more dynamic landscapes.

According to Jorgensen (2012) in Germany urban wildscape is used and is something positive, an example is Südgelände in Berlin. The creation of the Nature-Park Südgelände, size 0,18 km² (Gardenvisit 2015), in Berlin is a successful example of urban wilderness in a big city (Langer 2012). The railway yard was built in the late 19th century. It was abandoned for decades. A citizen group persuaded the government to do an ecological survey with the purpose of creating a nature-park (Langer 2012). The results showed a high biodiversity and that the site was one of Berlin's most valuable ecological areas. A flexible management is used to adjust after both ecologically and recreationally circumstances, to keep the high spatial- and biodiversity. The combination of culture and nature, show the possibility to re-create and protect wilderness in the city (Langer 2012). The more visitors a park have the more need it has for management so that the nature gets the right protection and care (Qvistström 2012). According to Qvistström (2012) an urban areas culture is recaptured and the nature can run wild when it becomes a nature-park.



Figure 11: The Evergreen Brickworks, (or Don Valley Brickworks), Toronto, Canada.

Though Evergreen Brickworks, see Figure 11 page 30) never was abandoned and therefore does not meet all requirements for an urban wilderness. It still has some qualities that do match. The Evergreen Brickworks, (or Don Valley Brickworks) 40,7 acre, Toronto, Canada, is a model for ecological design (Lister 2007). The area is part of Don Valley it is a well-visited geotourist destination. When the industry closed the site was re-designed to connect the city with culture, nature and community (Lister 2007). Evergreen Brickworks is an example of a urban park with wilder nature.

Urban wildscapes are often used by groups that feel that their activity is misplaced in regular urban areas (Jorgensen 2012). One of these



Figure 12: Graffiti, at Südgelände, is an activity not allowed on all surfaces in a city.

activities that is not allowed everywhere is writing graffiti, walls for this can be found at Südgelände, see Figure 12. These spaces are forgotten by most of society. The four wildscapes according to Gobster (2012) is: filled-in, elevated, in-between or recovered nature.

Kowarik (2008) explain that these urban wildernesses can reconnect the general public with nature. It is important according to Kowarik (2008) to make these urban wildernesses more accessible, so that the stigma of wilderness disappears. This is not a view everyone shares. Without the stigma the allure Daniel (2008) write about might disappear and the space loses its value. As Edensor et al (2012) state these areas often are seen as dangerous, because people often have been taught to fear wilderness or lack the positive experience of wilderness spaces. The area may offer an area without adult supervision (Edensor et al 2012) therefore attentiveness and responsibility can be learnt (Thompson 2012). Which is why it is a good environment for young people and children to develop and find themselves (Edensor et al 2012). Thompson (2012) point out that it is sometimes only through urban wilderness that city youth and children can find their own recreational space in the city which makes the areas important and beneficial. This is because they can be unruly for adults and the cities regular recreation areas (Thompson 2012).

Urban wildscapes can also be seen as resource (Rotherham 2012). Encountering environmental problems such as climate change some urban wildscapes can be of service. With heavy flooding green urban wildscapes can lessen the probability of flood. Some urban wildscapes can provide ecosystem services, to contribute to the green infrastructure (Rotherham 2012). According to Kowarik (2008) these, as he call them urban industrial woodlands, are the ecosystems, within a city, with the highest naturalness.

“Should we build cities with a return to wilderness built into their design DNA?” – Woodward, Jacobsen, 2012

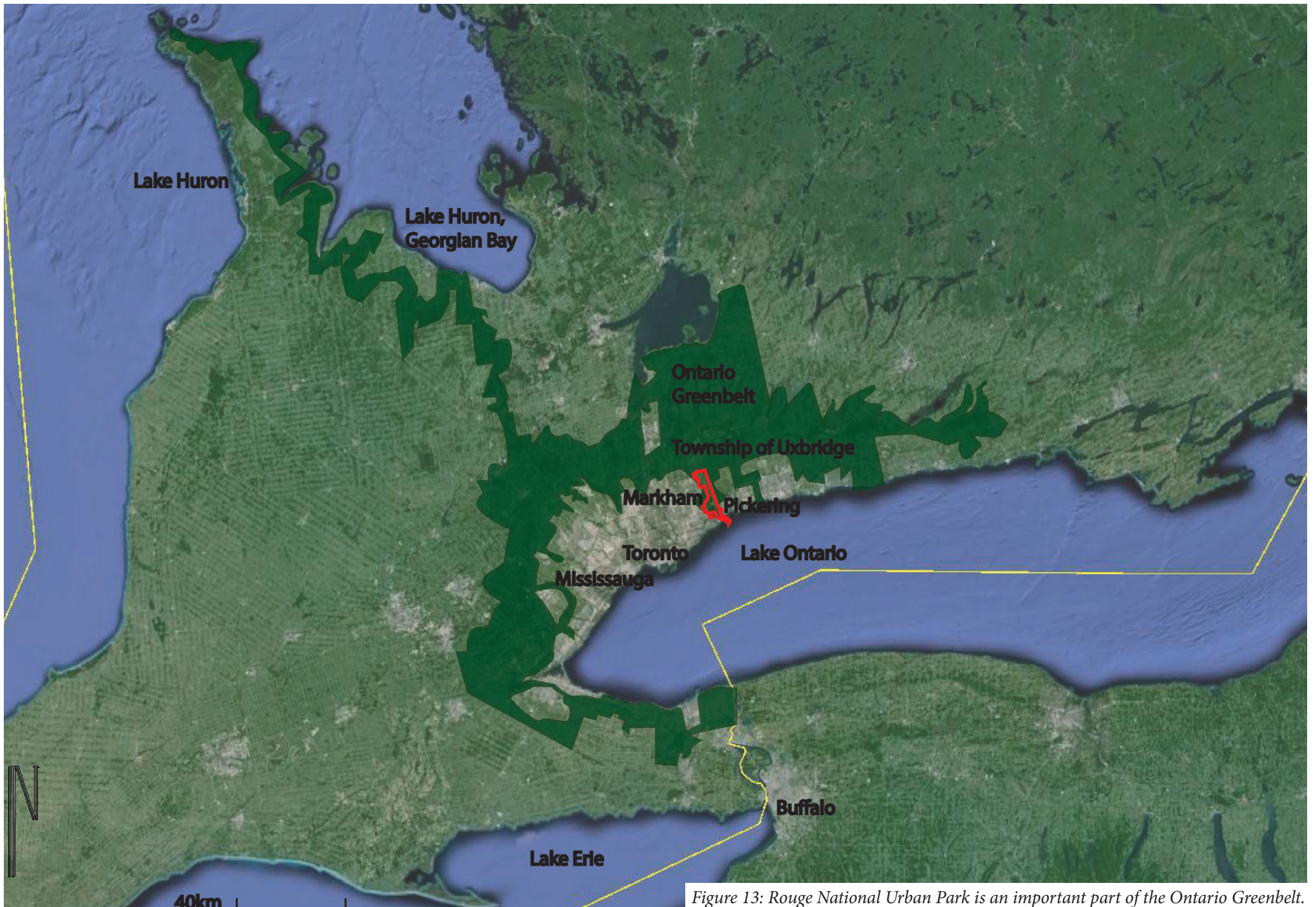


Figure 13: Rouge National Urban Park is an important part of the Ontario Greenbelt.

Rouge National Urban Park – Toronto, Canada

“Rouge Park would become Canada’s first national urban park. Note the “urban.” Veinotte (2013), though, says it will not be a sub-class of national park, but instead a new, fourth designation under the Parks Canada umbrella, joining national parks, historic sites and marine conservation areas.” - Merringer 2013

Rouge National Urban Park, see Figure 14, page 32, started off as an urban park: Rouge Park. It is situated in west of the city of Toronto, and the towns of Markham, Pickering, and the Township of Uxbridge, in the Great Toronto Area, GTA (Parks Canada 2015). Some of the borders it will come across is private property, municipal and provincial infrastructure corridors, such as transport, trains, energy and serving capacity (Parks of Canada 2012).

The Rouge Park house a large diversity of habitats and ecosystems, all from larger complex areas to smaller more simple areas. Among these are human landscapes, such as the Toronto Zoo, see Figure 18, page 37, and some active farming communities (Rouge Park 2015), but also natural areas such as natural forest, swamps, marshlands, meadows, streams, rivers, shoreline and bluffs (Ministry of Natural Resources 1993). In the park two National History Sites, and Toronto’s largest wetland can be found (Rouge Park 2015).

Rouge Parks Rivers start their 250km-long journey up in the Oak Ridges Moraine north of Toronto. It is from the rivers colour the name Rouge come from the red, “Rouge” in French, clay (Rouge Park 2014). Rouge Parks Rivers all merge and winds down into Rouge Beach at Lake Ontario. This makes it an important ecological corridor connecting the Oak Ridges Moraine, a part of Ontario’s Greenbelt, see Figure 13, page 32, to Lake Ontario (Wells 2011). Oak Ridge Moraine is part of a vision from Ontario’s government to “a continuous band of green rolling hills that provides form and structure to south-central Ontario, while protecting the ecological and hydrological features and functions that support the health and well-being of the region’s residents and ecosystems” (Ministry of Municipal Affairs and Housing 2010).

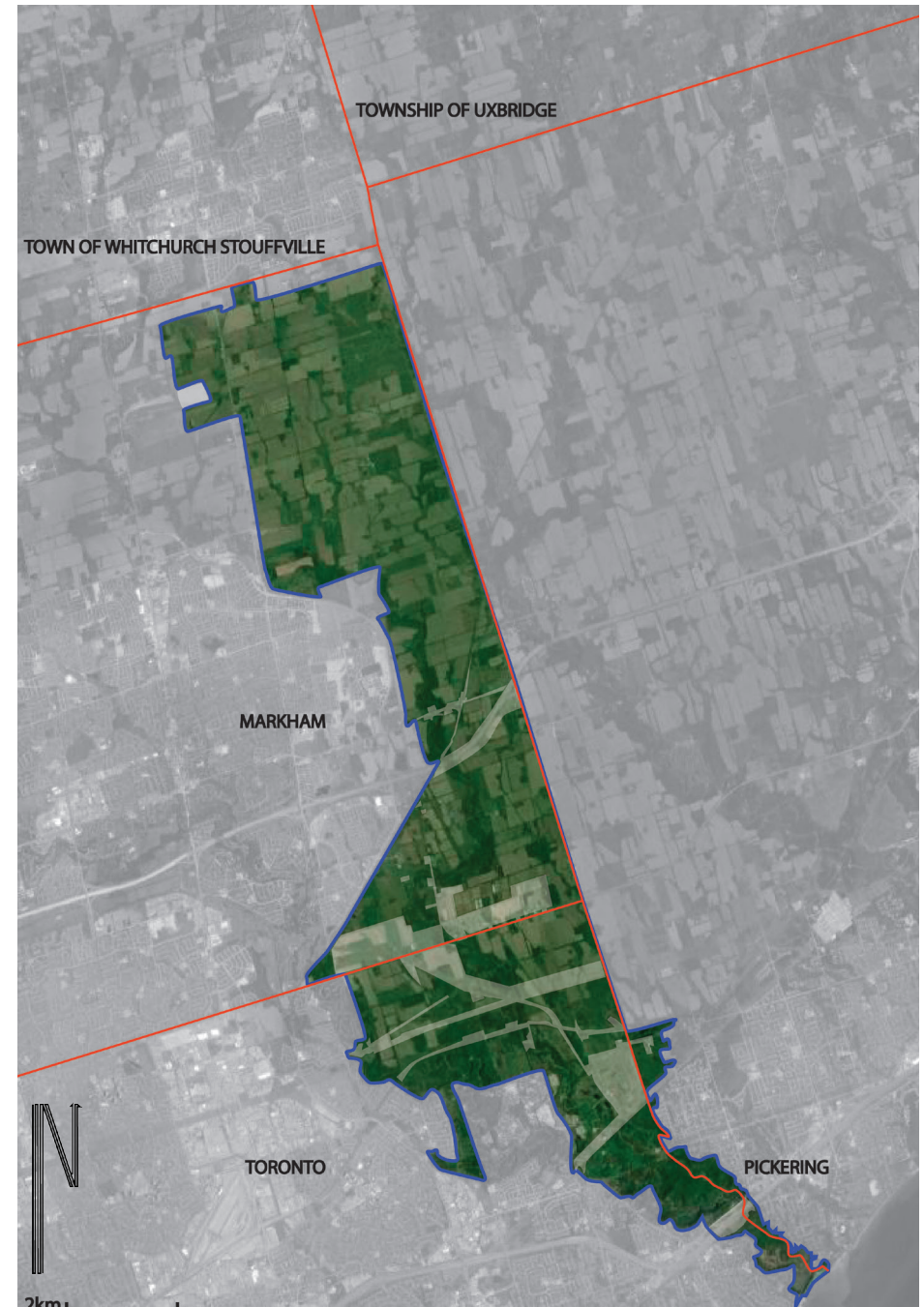


Figure 14: Rouge National Urban Park study area (58 km²) without the new additional land.

The site has a long tradition of human interaction, inhabitation and activities (Rouge Park 2015). Already in 1956 there were plans about protecting the area, making it into a public park, to save its ecosystem. Rouge Park is an important site and it was identified as such in 1984 (Rouge Park 2015). Rouge Park was founded in 1995 using a plan created during the previous year (Rouge Park 2015). During the early 2000 the park was recognized for its importance to the City of Toronto's health (Rouge Park 2015). In 2005 it was included in the Province of Ontario's Greenbelt Plan. 2007 it was seen as a part of the green infrastructure for Toronto area, and recognized for its value (Rouge Park 2015).

The parks vision from the management plan draft in 2014 is as following:

“Rouge National Urban Park celebrates and protects, for current and future generations, a diverse landscape in Canada's largest metropolitan area. Linking Lake Ontario with the Oak Ridges Moraine, the park offers engaging and varied experiences, inspires personal connections to its



Figure 15: One of Rouge National Urban Park's agricultural land. Found along Beare Road.

natural beauty and rich history, promotes a vibrant farming community, and encourages us to discover Canada's national treasured places.” (Park Canada 2014)

Rouge Park is in the Carolinian forest ecozone, which covers less than 1% of Canada's surface (Rouge Park 2015). The ecozone that the park is situated within has the highest amount of different habitats than any other of the countries ecozones, which means it has a great biodiversity (Rouge Park 2015). The agricultural landscape in Rouge National Urban Park, about 75 farms, see Figure 15, takes up 60% of total landmass (Rouge National Urban Park Initiative 2012). The Environmental Farm Plan has rules and guidelines for the farms within the park to follow (Rouge National Urban Park Initiative 2012).

As an urban park Rouge Park has often been compared to other large urban parks, such as Central Park in New York, US; Stanley Park, Vancouver, Canada and Hyde Park, London, England (Parks Canada 2015). Rouge National Urban Park has a much stronger protection than the compared urban parks have. The reason that Rouge National Urban Park is still compared to these famous urban parks might be because it is still at times referred to as an urban park by, among others, Parks Canada (2015). The comparison is in regards to the size of the parks. As Parks Canada (2015) state Rouge National Urban Park will be the largest metropolitan park of its kind in the world. The parks being compared to Rouge National Urban Park are all well-known, successful, larger urban parks in large cities (Corner 2007, Czerniak 2007). This might be a reason why these parks were used as comparison.

Toronto Region Conservation Authority (TRCA) is the organization that manages the park in its transition phase until Parks Canada can take over (Rouge Park 2015). The different stakeholders, partners and volunteers will, based on their interest, partake in the parks management (Parks Canada 2014). The park will be easy to access both with car and transit (Rouge Park 2015).

Rules and Regulations

In an article from 2014 (Benzie 2014) worries were made that the Bill C-40 would give the park protection enough. According Benzie (2014) the provincial standards for ecological integrity needs to be heightened. Because the Bill C-40 did not meet all requirements from the province of Ontario, they did not want to hand over their parcels of land to the federal government for the park (Benzie 2015, Staff 2015).

Ontario Economic Development Minister Duguid state that the current legislation does not meet the standard of the Greenbelt, Oak Ridge Moraine and Rouge Park plans and therefore does not give the park strong enough protection (Honderich 2015). Rouge Park's restrictions are to protect the park so it will thrive and future generations will be able to enjoy it. Some of these restrictions will be more lenient as a national urban park (Rouge National Urban Park Initiative 2012). Examples, of these activities that will be allowed within limited circumstances, are timber harvesting and farming and corridors underneath the power lines (Rouge National Urban Park Initiative 2012).

According to Baggio director of conservation planning for Canadian Parks and Wilderness Society (CPWS) Wildlands League "We still don't have legislation worthy of a national urban park, it still doesn't meet the international standards for protected areas" (Honderich 2015). This is because in the Rouge National Urban Park's Act priorities public infrastructure ahead of the parks land (Bill C-40 2015). The Act can be revoked in favour of installation or maintenance of infrastructure (Bill C-40 2015). Therefore the legislation needs to be changed, as Baggio state, so that change in the park is done with as little harmful impact as possible (Honderich 2015). Baggio has support from the group friends of the Rouge Watershed (Honderich 2015). The general manger for friends of the Rouge Watershed Robb not only state his concern over the legislation not being strong enough, but also the point out concern over the treat that the planed airport in Pickering can have to the park (Honderich 2015).

The Canadian government make the park a reality (Editorial 2015). Rather than a wilderness retreat it is a "people's park" (Editorial 2015).

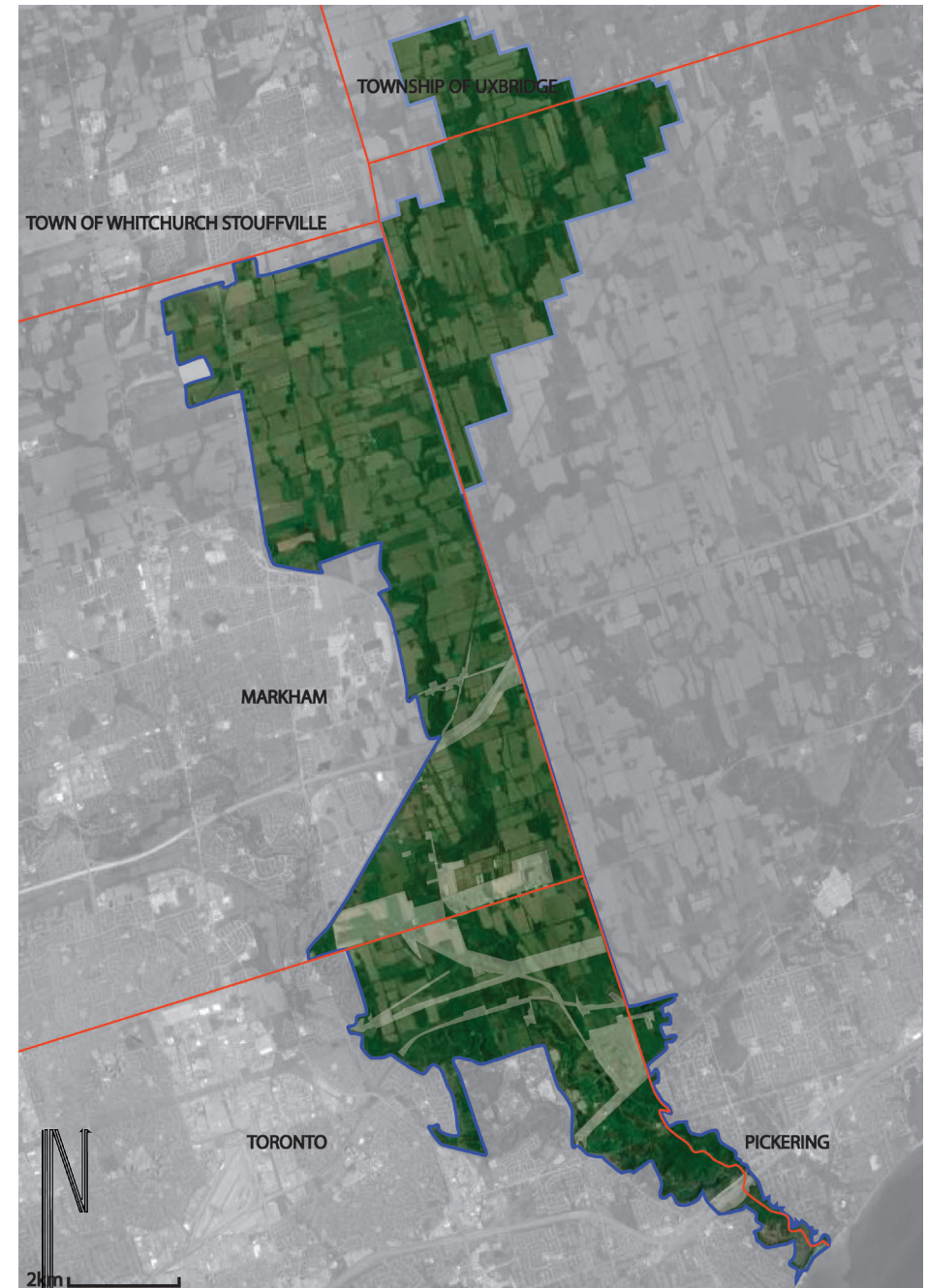


Figure 16: Rouge National Urban Park including additional land (total area of 79,5 km²).

More land is added, by the government, to the former 58 km² large park (see Figure 14, page 33) so it will now become almost 80 km² large (see Figure 16, page 35)(Editorial 2015, Staff 2015). This extra 21 km² land is only added if the differences between the provincial and federal government are solved (Eschner 2015). Map of the park with additional land see Figure 16. Strengthening of the protection is still sought after by the province and environmental groups (Editorial 2015).

One rule is that from dusk to dawn it's not allowed to visit Rouge Park during these hours its trespassing to visit the park. (Rouge Park 2015)

History

The area of Rouge National Urban Park has had a long interaction with humans (Parks Canada 2014). The land has been used for First Nations settlement, for early pioneers to build communities on and the land has been used for agriculture, and since the 20th century it has been used for recreation (Parks Canada 2014). Therefore the area has high values



Figure 17: Rouge Valley Conservation visit centre, Pearse House, open since 1995. Owned and operated by Rouge Valley Foundation (Rouge Valley Conservation Centre 2012).

both culturally and naturally. Because of its history, high biodiversity and recreational use the area is valuable and worth protecting (Parks Canada 2014).

Support to protect the area later becoming Rouge Park existed already in the 1950's (Rouge Park 2015). In 1984 Rouge Park was unprotected and the valuable nature risked being developed upon, it was identified as being one of 38 critical unprotected sites according to Rouge Park (2015).

Rouge Park had a large support from its community when founded in 1995 (Rouge National Urban Park Initiative 2012). To establish the park a lot of different organizations and people came together (Parks Canada 2014). The park still has a strong support from the community to transfer into Canada's first national urban park (Rouge National Urban Park Initiative 2012).

One of the oldest houses in the park accommodates the Rouge Valley Conservation Centre (2012), see Figure 17 and map in Figure 18, page 38. It was originally Pearse House, and is still called so, and is a 120 year old landmark. Originally it was built by the Pearse and its purpose was to provide shelter and comfort. The first family, the Pearse, operated the sawmill in the north-west corner, close to Finch Ave E and Meadowvale Rd (Rouge Valley Conservation Centre 2012).

Site visits

At Rouge Park guided tours were available (Rouge Park 2014). A guided tour was chosen as the first site visit at Rouge Park. The guided tour displayed a wide arrange of different habitats.

Toronto, being a North American city, has a heavy reliance on personal vehicles (Beatley 2012). North American cities have a less compact urban form more of an urban sprawl (Beatley 2012). This often goes hand in hand with a less developed public transits system than what can be found in European cities (Beatley 2012). Most places in Rouge Park are easy to access by car but there are public transit opportunities to some places within the park. Because of time the most logical solution for visits at Rouge Park was by car.

Guided tour

Guided tours in Rouge National Urban Park that are offered are held by one or more volunteers (Rouge Park 2015). The guided tours are dependent on the public, of people wanting to be guides, it is based on a volunteer system. The guided tours change depending on the season. Different goals for the guided walks, as Rouge Parks (2015) Guided Walks write themselves “include wildlife sightings, quiet nature walks, fitness challenges or just to meet new people”. Rouge Park (2015) offer walk schedules for some weeks in advanced, where the public can sign up for the walk of interest. The walk schedule is detailed with time and destination of meet up, what trail, or trails, the walk is on, how great the challenge the walk will be, what pace that will be expected to follow, how long it is, and what to expect. Other details include if the walk is appropriate for children, elderly and dogs.

During the walk, at the site visit, the guide talked about the reason behind the park becoming a national urban park. A reason was because Toronto and towns around Toronto has been expanding a lot and the park was in the danger of being used for housing and other developments. The guide explained what it meant for the locals that Rouge Park became a national urban park. Local people wanted to keep the green area that was so close to Toronto, and their voices were heard, and the process of turning Rouge Park into Canada’s first national urban park started.

“And this book may help to answer positively, as did Vern Harper, the question of whether it’s possible to be a true naturalist “grounded” in a modern city. The words of Ian L. McHarg – an urban planner who sought to “design with nature” – hold true: “We need nature as much in the city as in the country.” ” - McHarg, 1969: see Garratt 2000 p.10

Information

Information about Rouge Park, and future Rouge National Urban Park can be found at Parks Canada and Rouge Park’s websites. They are easy to navigate though. Rouge Park’s website’s, www.rougepark.ca, information include (Rouge Park 2015):

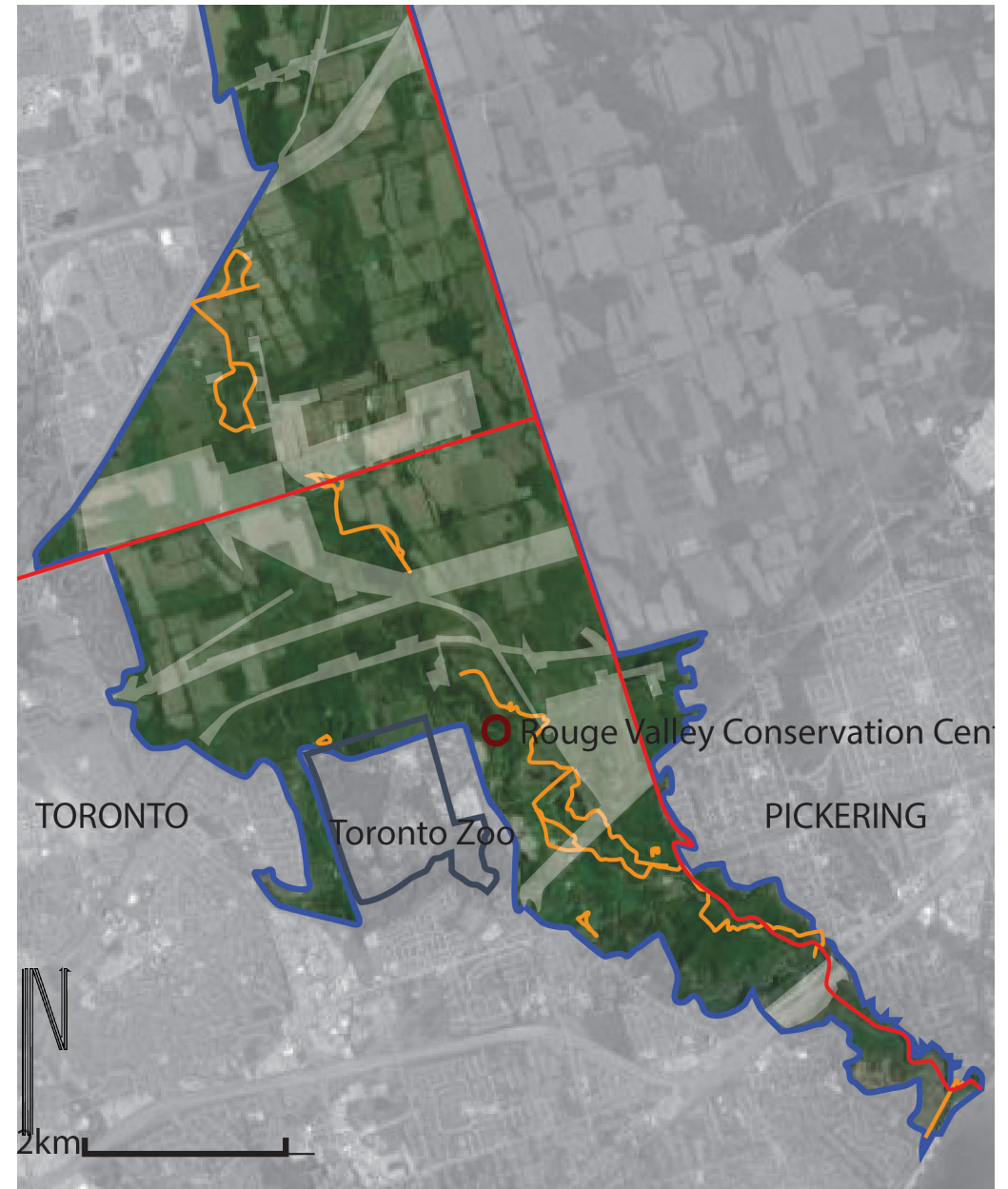


Figure 18: Toronto Zoo and the Rouge Valley Conservation Centre are found close to one and the other. Map show existing trails in the Rouge National Urban Park.

- Help to plan your visit,
- Road accessibility, which paths are suitable for whom and if dogs are allowed,
- A list with the different guided walks one can take. The information of the walks include: what in nature they focus on, difficult level, whom it's suited for (kids, elderly, experienced hikers, inexperienced hikers), duration, pace, meeting place and which trails they will follow,
- Places designed different activities. Including rules and regulations for these activities, and
- Transits to the park.

The Rouge Valley Conservation Centre is situated in Rouge Park, in Toronto, next to Toronto Zoo, see map in Figure 18, page 37. Their website, www.rvcc.ca, offers information about:

- the organization,
- where to find the Centre,
- guided tours and camps, the camps are both during weekends and holydays,
- different events and programs, and
- activities the teach about the nature, and Rouge Park.

In Rouge Park there are signs promoting the park. With information such as “rebuilding the wetlands” and “building new forests”, all signs have the slogan “Wild in the city”, see Figure 22, page 41. Other restoration projects include installations of bat boxes, example on Figure 19. Places where re-forestation/re-vegetation are among others a land-fill, see view over it in Figure 20, page39, close to the Pearse house (the Conservation Centre), along Orchard Trail and an area around Celebration Forest. Some signs inform what is important when hiking in the area. Information includes some of the animals in the park examples are coyote, different birds, and bats. The information contains what to do if encountered by these animals, when it is most likely to encounter them and what programs there are to help them. Signs with information when starting on the different trails about the paths are: name of trail, their distance and important knowledge of the trail.

Recreation and accessibility

Rouge Park’s website (Rouge Park 2015) has a submenu about activities within the park. Activities include hiking, running, horseback riding, camping, canoeing, swimming, fishing, photography, geocaching and picnic. Suggestions are made what to think about for the different activities. Restrictions are made for different activities, for the protection of the nature.

On Rouge Valley Conservation Centre’s website (Rouge Valley Conservation Centre 2012) there are links to their special events and other recreational activities. Activities include camps, environmental restoration, guided walk for the public, for community groups and



Figure 19: Both bat and bird boxes can be found in Rouge National Urban Park, they are part of the many restoration projects around the park.

schools. During the weekends there are kids here for their “weekend nature programs” (Rouge Valley Conservation Centre 2012). The centre works to promote nature for kids in the city, so they’ll experience wildlife. The kids get to be outdoors in the nature, hiking and doing active things like different crafts.

The centre is an old house with its own yard. In the backyard is a mini-wind power station, a part of the garden is for planting vegetable, there were a fireplace with some logs around. The fireplace is used to show how to make fire, or during winter how to make candy of maple syrup. This is done by heating up the maple syrup in a pot over the fire, put in a candy stick swirl it around and then quickly put the stick with syrup first in the snow. The syrup became chewable and cold enough to eat.

Some trails are more accessible for everyone than others. One easily accessible trail is along Rouge Beach, by Lake Ontario. This trail has swimming opportunity.



Figure 20: View with land-fill in the background.

Nature

Rouge Park is part of the forest is the northern edge of the eastern deciduous forest region, Carolinian life zone (Rouge Park 2015). This zone is rare and cover less than 1% of Canada surface. The Carolinian life zones supply the largest amount of different species habitats in Canada. Some of the species are on the endangered list (Rouge Park 2015). In Rouge Park there are (Rouge Park 2015, Moola 2012):

- 762 plants (this is about a quarter of Ontario’s flora, 98 are rare; 92 regionally and 6 nationally),
- 225 birds (9 are rare; 5 nationally and 4 are of specially concern or locally rare),
- 55 fish (2 are rare; nationally),
- 27 mammals (of which some are rare locally), and
- 19 reptile and amphibian (some are rare locally).

Restoration projects are made throughout Rouge Park (Rouge Park 2015). They include installation of bat boxes, re-growth of the forest and re-making wetlands. Some examples down below:

One of the projects are to restore the population of bats. Example of bat box see Figure 19, page 38. By putting up bat boxes in the Rouge Park area the bat population can hide and sleep. Bat boxes differ from normal boxes for birds. Bird boxes have round holes in the middle or higher up on the box. Bat boxes have a long thin opening underneath. The small slots resemble cracks that can be found in tree trunks and underneath bark places bats usually sleep (Bat Conservation Trust 2015).

An example of re-forestation is the old land-fill, an old garbage dump, parallel to Cedar Trail/Orchard Trail on the other side of the train tracks. View over said land-fill see Figure 20. It can be seen straight ahead when walking from the visitor centre (the Pearse house) on the old paved road. When the re-vegetation is sturdier it will become a part of the trails. People are already walking there today but not through the guided tours and without paths. The land-fill is 120 meters higher than the rest of its surroundings making it a great future view-point (Rouge Park 2015).

Beside the Cedar Trail and Orchard Trail, on the other side of the train tracks from the land-fill lays another example of restoration (Rouge Park 2015). A wetland is being restored, see the promotion sign Figure 22, page 41, and around it bat boxes are installed. It's being done by taking away the drainage pipes that are underneath the wetland (FRW 2015). The restoration program for the streams, wetland and marshes will recreate the habitats for birds, fish, and wildlife such as frogs and toads. The program tries to control invasive non-native plants, and connect habitats together with natural corridors (Ontario Streams 2009).

One stream in the restoration project is Little Rouge Creek a small stream found when walking from the Pearse house to the land-fill. Little Rouge Creek leads down to Lake Ontario. It connects with Rouge River just before they mutually run down into Lake Ontario. This is the only area connecting Ontario Green Belt with Lake Ontario.

Rouge National Urban Park has urban elements not found in national parks. Some of them are the farms and their agriculture, housing,



Figure 21: Some of the powerlines in the park, in the low vegetation underneath birds are found. For safety the ground underneath the power poles have bare to low vegetation.

power poles, roads, a highway and train tracks. Of the Rouge National Urban Park's land almost half will be farming land (Parks Canada 2014). These elements will stay in the park. The elements are needed for the population in and around the park. The land underneath the power poles needs to be bare or low growing. Example of vegetation underneath the powerlines see Figure 21. This makes the area underneath the power poles different from its highly vegetated surroundings.

Right before the Rouge Beach lay the biggest marshes in the Toronto area with a rich wildlife (Rouge Park 2015). The housing area around the marshes and beach has a rich canopy although it's not a part of the park.

Accessibility in this case include assess in and to the park.

The public transportation accessing Rouge Park is mostly buses, with the exception of a train stop at the Beach. The transits stop at different spots in the park, the whole park is not accessible with transit. Some parts can be reached by transits and walking, while others only can be reached by personal transportation. As stated before it is clear that Toronto is a North American city, with regards to the heavy reliance on personal vehicles (Beatley 2012, Clark 2006). With personal transportation the whole park is accessible, there are many parking spaces and it is noticeable the infrastructure is built up around a car society.

Rouge Park is accessible in the perspective it will not have any entrance fees (Parks Canada 2015). National parks in Canada usually have an entrance fee. This makes the park more accessible for people with low income (Parks Canada 2015).

Accessibility in the park is important. This means that some of the trails are accessible for everyone, like kids, elderly, people with strollers, and people with different walking aids. The trails have different grade of accessibility. The levels of difficult vary between novices to experienced hikers. The accessibility depends on the paths surface, steps or slopes and how hilly the trail is. This information is accessible at the website, as well as information where the trails starting points are.

The Rouge Beach trail is one of the most accessible trails, it is paved road and very easy to walk along. Another example is the Cedar trail when walking it as a loop it is one of the easier trails. It is levelled and a short walk, it is a novice trail. It accommodates novice hikers, children and people who use mobility devices. The accessibility depends on the season. With snow and ice the accessibility differs, because the trails are not maintained during the winter season. Warning was given on the website that during winter the ice and snow made the trails more difficult.

Management and maintenance

Since 1994 until 2012 the Rouge Park Alliance had mandate to care for Rouge Parks best interest (Rouge Park 2014). The Rouge Park Alliance consisted of a voluntary partnership between groups and agencies (Rouge Park 2014). Toronto Region Conservation Authority (TRCA) manages the park during the transition phase (Rouge Park 2014). As a national urban park it is Parks Canada that will manage the area (Parks



Figure 22: One of many promotion signs.

Canada 2015). During Parks Canada's management the plan is to make the park robust in itself but at the same time adaptable to change. For all decisions, regarding the park, its protection and all recourses have to be incorporated (Parks Canada 2014). A management plan draft was made 2014, released by Parks Canada, for comments from the public (Lively 2015). The management plan for Rouge National Urban Park gives directives how to manage the park under the legislative frame-work of Bill C-40.

The park concepts four cornerstones, stated in earlier paragraph 'National Urban Park in Canada', is integrated in the management plan (Parks Canada 2014). This is together with the nine guidelines made by the parks partners and stakeholder (Parks Canada 2014). The nine guidelines, according to Parks Canada (2014), are:

1. Maintain and improve ecological health and scientific integrity,
2. Respect and support sustainable agriculture and other compatible land uses,
3. Inspire people to experience this park,
4. Encourage people (especially youth) to learn and connect with nature,
5. Foster a culture of community and youth volunteering, engagement, respect and partnership,
6. Honour diversity, local heritage, cultural inclusiveness past, present and future,
7. Collaborate to ensure multi-modal connectivity and access,
8. Inclusive, progressive governance led by Parks Canada, and
9. Environmental leadership in park operations.

In Rouge Park the trails are being maintained during the late spring to early autumn season. During the winter season they are not maintained and warnings with risk of falling is stated clearly. Platforms are also not maintained and are therefore closed during the winter season.

The farms with the park strive to follow sustainable principles (Rouge Park 2014). The plan is to have a diverse agricultural landscape in size, farming types and crops (Parks Canada 2014). To provide the locals with a farmers market to connect the farms with the locals (Rouge National

Urban Park Initiative 2012). They are protected for their good soil and future possibilities (Rouge Park 2014).

Restoration projects include re-vegetating, re-forestation, and restoring wetland, marshes and streams (Rouge Park 2015). Through these restoration projects the habitat for birds, fish and wildlife will be recreated. In Rouge National Urban Park boxes for bats, and different types of birds are being installed. Little Rouge Creek is one of the streams in the restoration project, it is found close to Pears house.

Interview

The interview was with managers at Rouge Park Office. It took place before the Bill C-40 was founded. Both interviewees actively gave a lot of valuable information, often answering more than one question in one go. Neither had heard about the Royal National City Park in Sweden before and follow questions about the park in Sweden were withdrawn.

Disclaimer: To keep as much information from the interview as possible, some parts will be a repetition of earlier parts in the thesis. This means that most of the information given in the interview is verified and has come to pass.

The main difference between a national park and a national urban park is the urban elements that a national urban park has. Rouge National Urban Park will not be as large and offer as wide natural diversity as national parks in Canada can do. This park is different because of the closeness to the cities, with landscape different from national parks, the park offers a great biodiversity and recreational area without an entrance fee.

To make a national urban park an alliance had to be made. The alliance has to have members from organization ranging between federal to community. A 10 year governance review is made, after this a bill can be drafted, it has to pass the house of common, three times, and be reviewed and pass the Senate.

Rouge Park is in the transition to become Canada's first National Urban Park. It was the public that pushed for a park, to keep the nature safe and not be exploited. It is, 2014, managed partly by Toronto and Region Conservation Authority, TRCA. As a national urban park it will, as all Canada's national parks, be managed by Parks Canada. Parks Canada must own the land it manages. Therefore the partnership between TRCA and Parks Canada will continue until all parcels of Rouge Park are owned by Parks Canada. Toronto and Region Conservation Authority, TRCA, is a part of the Rouge Park Alliance, RPA, which is the managing organization for Rouge Park. It is important not to rush the transition.

The plan is to keep the current infrastructure, but eliminate all negative impact on the park. Because of urban elements in the park a full protection of it will be difficult but one of the goals is to protect the nature as much as possible. To protect the core area will be the primary focus after which the satellite areas will be focused on. This is to manage the park easier but also to make the transformation as easy as possible.

The four key objectives are:

- Protection of heritages,
- Recreation,
- Past and present, and
- Agricultural heritage.

The four key objectives are all important, and no-one of them will take president over the others.

The slogan for Rouge Park is "Wild in the city". It alludes to that the park can offers nature in an urban context. Projects are created to make long lasting and robust habitats for animals, such as the bat. It will be the first time in Canadian history that agricultural land will be protected. Activities in Rouge Park are more passive oriented, less public use activities, and own equipment needs to be brought with for the activities.

As Rouge National Urban Park the park will receive \$140-million Canadian dollars to be use over the next 10 years as seen fit. Rouge National Urban Park then after the first ten years receive \$7.5-million Canadian dollars annually from the federal government.

Rouge Park is successful thanks to the passion of the public. The people pushing for a park, this is what makes Rouge Park unique. Rouge Park's volunteers are the heart and soul of the park.



Figure 23: the Royal National City Park.

Royal National City Park – Stockholm, Sweden

In 1980's Stockholm went through heavy exploitation. To save the valuable nature and cultural landscapes from being exploited a new law to protect the area was established (Nordström 2012). The park was founded in 1995 (Holm et al. 2002, Miljö- och Naturresursdepartementet 1994). Map over park see Figure 23, page 44. Holm et al (2002) explain the park is an example, a model, of how important improvement of different planning methods to incorporate biodiversity into urban areas.

The park has a vision, but to make the vision a possibility conditions must be met (Beler et al 2006, Nordström 2012). These conditions are to make the name Royal National City Park a known and positive concept, the park is a recourse and must be valued as such, and the park needs to be managed and developed in collaboration and consensus. The parks vision is:

“The Royal National City Park with where active knowledge institutions will be developed based on their unique cultural, natural and recreational values and be an eventful and easily accessible area.” - Beler et al 2006, Nordström 2012

When the Royal National City Park was formed it had the support of the citizens of Stockholm. Ernstson & Sörlin (2009) argue that activist, civil society organizations, made a base plot that linked together the different areas that were in need of protection in Stockholm. Uggla (2014) agree that it was because of interested citizens and organizations that the park was established. The need for a protection was because of threats of exploitation made on areas that today is within the parks boundaries (Uggla 2014). It was because of successful storytelling and networking that made it possible to establishing the Royal National City Park (Uggla 2014). The four main reasons the Royal National City Park was formed was to protect (Holm et al. 2002):

1. biodiversity,
2. nature values,
3. culture values, and
4. recreational values.

The park is found in three municipalities: Solna, Stockholm and Lidingö's. The park is about 27 km² or 6 672 acre, and is over 10 km long. It has gotten international recognition from Finland, Norway and Germany (Holm et al 2002). The landscape in the Royal National City Park has evolved and been used for centuries (Förbundet för Ekoparken 2015). In the park a large variation of flora and fauna can be found, according to Stockholm's county government there is over 800 different species of flowers, and around 100 different birds (Länsstyrelsen i Stockholms län 2014, Nordström 2012).

In the park there are several activities and important buildings: the Stockholm university, 4 castles and 1 mansion, several allotments and about 20 museums. One of the allotments with surroundings can be see in Figure 24. One of the 20 museums is the Swedish Museum of Natural History see Figure 25, page 46. Through the university inside the park it has about 15million visitor each year. The park has a large variety of



Figure 24: One of The Royal National City Park's many allotments, Stora Skuggan, with housing within the park in the background.

different habitats and nature types, one of the more valuable habitats are the old oak groves (Länsstyrelsen i Stockholms län 2014). The oak (*Quercus*) and linden (*Tilia*) growths in the park are important habitats for many insects and are therefore valuable (Holm et al 2002).

The park is mainly owned and administrated by the National Property Board. Statens fastighetsverk, of Sweden (Nordström 2012). Other owners and administrators are Stockholm city and Solna city. The organisations that take care of the land is; Akademiska Hus around the university, the National Property Board of Sweden and the Royal Djurgårdens Administration whom takes care of around 80% of all the land. It's the County government that has as their assignment to organize it all and see so that the park is taken care of and progress (Nordström 2012).

Royal National City Park's general interests are represented by County Administration Board, Länsstyrelsen (Holm et al 2002). Holm et al (2002) stated their concern with this being that the Country



Figure 25: Swedish Museum of Natural History (*Naturhistoriska riksmuseet*), one of the museums in the Royal National City Park.

Administration Board have many other assignments that may collide with the parks interest. The park does have two organisations that protect the park when exploitation threats are in the making (Holm et al 2002). They are the Ecopark Association (FFE) and the Royal Djurgården Administration (KDF) (Holm et al 2002, Förbundet för Ekoparken 2015).

The Royal Djurgården Administration has, according to the Royal Court of Sweden, an annual turnover of around 130million SEK (Sveriges Kungahus 2015). The Administration has a staff on 32 people.

RUFS 2010 is an acronym of the Swedish term for “Regional Development Plan for the Stockholm Region 2010” (Fredriksson et al 2013). RUFS 2010 plan for Stockholm region is to make it the most beautiful metropolitan in Europe (Fredriksson et al. 2013). Which the Royal National City Park will help with. One of the goals is to minimise the exploitation of the parks and other green areas. The idea is to develop close to existing settlement to densify (Fredriksson et al 2013). According to Fredriksson et al (2013) RUFS 2010 has contributed to the cooperation between regional government and other stakeholders. This collaboration led to the createtion of a new united vision (Fredriksson et al 2013).

Rules and Regulations

In the Royal National City Park's proposition, it starts off with a few general guidelines for future national urban parks, to then go into a detailed design only in regarding to the Royal National City Park (Miljö- och Naturresursdepartementet 1994).

A national city park, or national urban park is an unusual type of national interest protection (Holm et al 2002). The author compare the protection of the park with a national interest area or a national park (Holm et al 2002). No harm is to be done upon the nature- and culture valued parts of the park. It is possible to get an exception to develop on already exploited areas within the park (Holm et al 2002). Problems on how to interpret the law has arisen because the terms of said law has not been clear. Because there are loopholes and exceptions can be found

within the law (Holm et al 2002). According to Ugglå (2014) after the parks protection was established in 1995, the park had to continue to be build up as a place. This means that the parks identity and values gets a larger public recognition (Ugglå 2014).

Two examples how national city parks differ is the national parks need to be owned by the state, and the legislation forbid exploitation in a national park, but not in a national urban park (Schantz 2006).

Development on already developed areas or buildings that are connected to other development within the park can get exceptions for building permits (Holm et al 2002). Because of this Holm et al (2002) showed concern for the future protection of the park.

The Northern Link, that was planned to be built around Stockholm, never got developed (Holm et al 2002). This was because parts of it were inside Royal National City Park, and would have destroyed the parks environment and nature (Holm et al 2002).

One example of rules and regulations was in the news February 2013, it was when an old maple and three other trees were cut down, to give space for an enlargement of an existing building. The article author was not pleased with the outcome, because the National City Park should have, according to him, protected the tree (Djurgårdens hembygdsförening, 2013).

Another example is the article with the chairperson at the time for the nearby allotment that commented on the planned buildings at Albano and Frescati. The allotment club did not want the new student buildings to be build because, according to the chairman, if it's allowed to be built more here then other places in The Royal National City Park might be allowed to be built on in the future (Fagervik, 2007). The case went to court but the complaints about the zoning plan was rejected and the plan was passed (Sveriges domstolar 2011). The court reasoned that the buildings connected with already existing buildings inside the park had a higher priority (Holm et al 2002). Other development that can be developed elsewhere did not get a permit for development (Holm et al 2002).

Concern that the area was not protected enough even though it is protected under the national urban park law was expressed by an allotment renter (Personal communication 2014). This was because recently in the news, according to the renter, a part of the Royal National City Park had been developed on. A housing area is going to be build for students and scientists inside the national urban park (Stockholms stad 2013). The housing is only for students and scientists because the only reason the housing was allowed to be build was that it had connections with the university (Stockholms stad 2013). In the law, the Swedish Environmental Code, Miljöbalken, new houses area allowed to be built if they don't harm or trespass on the natural environment and parkland environment, and that the values are still uphold for the environment, including flora and fauna, exception can be granted if no harm is done or little harm is done (Miljöbalken 1998). The renter was concerned because of fear of losing the allotments, they being so close to the university campus (Personal communication 2014). The new development area is further south on an old industry area, Albano (Stockholms stad 2013).



Figure 26: At the west entrance to the Park of Haga.

History

Parts of the park was created through the last ice age (Nordström 2012). The esker Stockholmsåsen (Stockholm Ridge) was created through the glacial streams. Parts of the Royal National City Park's land rose up from the water after the pressure from the ice had disappeared (Nordström 2012). The landscape changed, during the end of the Stone Age (2300-1800 BC), into the archipelago it is today (Länsstyrelsen i Stockholmslän 2014). People probably passed here from time to time, but it was not until the Iron Age (400BC – 1050 AD) that traces of people staying around the area have been found (Länsstyrelsen i Stockholmslän 2014). More people come to live here and in the 1200s Stockholm became the capital of Sweden, at this point it was about as big as the Old Town, which means that the Royal National City Park at this time was mostly farming land and pastures and small villages. The Park was partly owned by the Church during the 1400s, the king at this time only owned Södra Djurgården and had it for military purposes. From the 1500s the king, at this time Gustav Vasa, took the land from the Church and made both Norra and Södra Djurgården to the kings' land. The rest of land where the Royal National City Park is situated was different villages and manors. (Länsstyrelsen i Stockholmslän 2014)

In the late 1600s Kars XI made the Norra and Södra Djurgården to royal hunting grounds and let it be fenced off (Nordström 2012). Before this Johan the III fenced of a small part of Djurgården and had reindeer, deer and moose (Nordström 2012). This is a large reason to why it has the character it has today. All the old oaks could prosper on the hunting grounds, because the other trees did not, the reason for this was that there were so many animals that they grazed the grounds to much. A lot of the parks winding paths were constructed during the 1700s when the park became a pleasure garden instead (Beler et al 2006).

Haga started off as a farm, to become the Kings' pleasure garden in the late 1700s, it is design as an old English park, but also have elements of forest areas (Nordström 2012). The old gates to the west entrance of the Park of Haga can be seen in Figure 26, page 47.

Site visits

Around Stockholm, within the area Large Stockholm (Stor Stockholm) there is a network of green wedges (Friluftsliv 2012). Map over the green wedges see Figure 27. The Royal National City Park is part of one wedge called Järvakilen and is the most central part of the wedges in Stockholm. While the park is within three municipalities, its wedge is within seven (Friluftsliv 2012).

In the Royal National City Park guided tours are available by boat, hiking and by bus. Because the guided tours were not found until after site visits where done, no guided tour was made in the Royal National City Park.

Stockholm has a well-developed public transits system. In Stockholm there is a congestion charge to drive into the city, this helps promote public transits. Most places in the Royal National City Park are easy to access by public transits (Nordström 2012). The north of the park is less

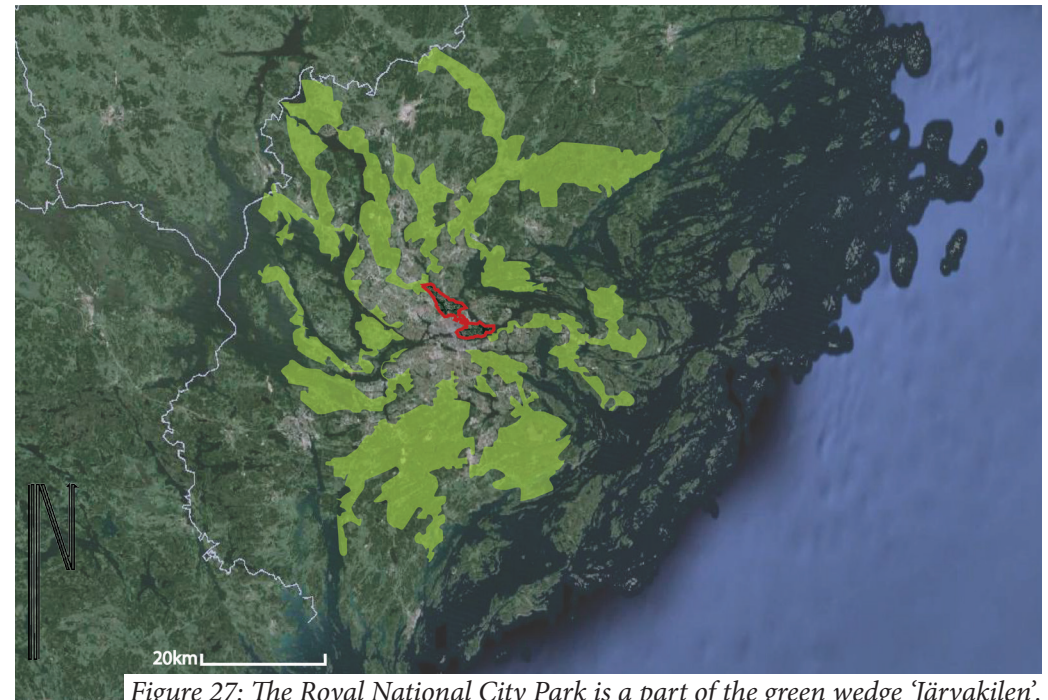


Figure 27: The Royal National City Park is a part of the green wedge 'Järvakilen'.

accessible through public transit than the rest of the park. To keep the high quality in some of the parks areas that promote calm, quiet and de-stress characteristics they are kept less accessible (Nordström 2012).

Information

Information about Royal National City Park can be found on its website www.nationalstadsparken.se, as well as www.visitstockholm.com and WWF's website www.panda.org. The websites offer easy accessibility to information in Swedish. Information in English can be found.

Information from the websites include:

- History of the landscapes,
- The parks nature and culture environments, and
- Reasons for founding a new nature protection, what the protection does, what and how it protects.

The Royal National City Park has had a visitor centre, 'Visit Djurgården,'



Figure 28, 29, 30: Tree examples of information signs for the Royal National City Park.

since 2013 it is found at Southern Djurgården (ETTELVA 2013). Royal National City Park has nine informational entrance signs in the park (Nordström 2012). Figure 28, 29, 30 show tree of them. They are found at the most visited points in the park. Points in the park these signs can be found at are by well-visited public transportation stops and park entrances (Nordström 2012). On the signs are: a map, the history of Royal National City Park, what the area protects and when it was founded. The park is managed and owned by the Country Government, several municipalities and other stakeholders.

Important places have smaller information signs. Some examples can be found in the Park of Haga such as the Haga Palace, Gustav III's Pavilion, the Temple of Amour and Psyche and the Cave. The signs have information in both Swedish and English. This is an easy way to inform the public about the different historical places in the park. Other types of signs in the park are signs with species specification found on some trees the name is in Swedish and Latin. This can inspire the public to learn different types of trees.

Recreation and accessibility

Some of the recreations available at Royal National City Park are hiking, walking the dog, take a stroll, running, and biking. See Figure 31 for list of attractions and where to find them. There are several places in the park and in central Stockholm to rent a bike (Länsstyrelsen i Stockholms län 2015). Horseback riding is also a recreational activity in the park (4H 2013). Allotments are found at several places in the Royal National City Park. Among these is Stockholm's oldest allotment: Söderbrunn. A few of the other allotments in the park are: Kvarnvreten, Lilla Frescati, Berghamra allotment association, Skansens allotment garden (Nordström 2012, 4h 2013). One of the main aims for the Royal National City Park is to have good recreational activities for the people in Stockholm (Nordström 2012).

Some of the parks older houses are national heritage (Nordström 2012). New purposes for the houses are as taverns, coffee places, and one turned into The Royal Djurgården Administration (Kungliga Djurgårdens

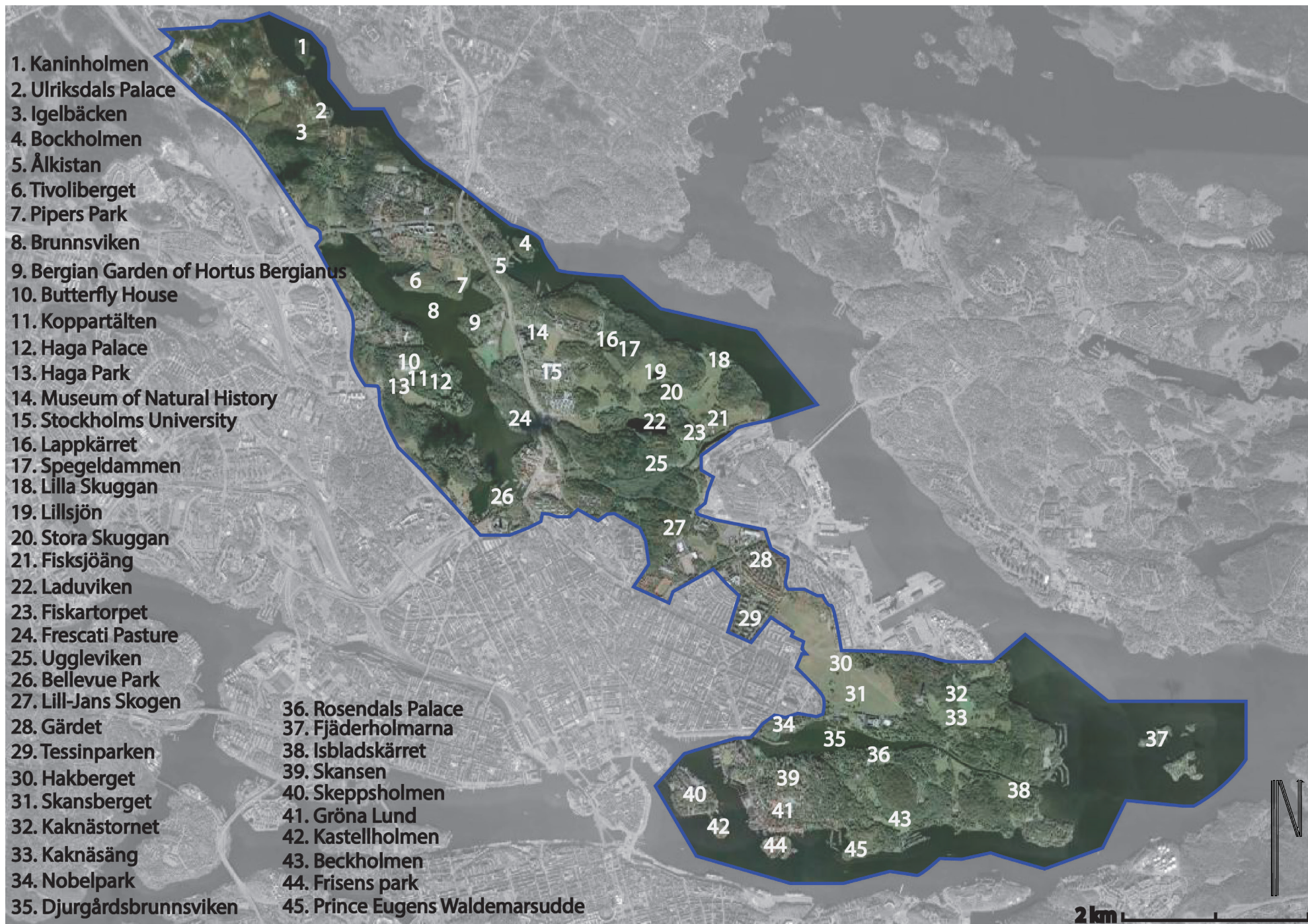


Figure 31: The Royal National City Park's attractions.

Förvaltning), or Agricultural Academy (Lantbruksakademin). Other buildings in the Royal National City Park include museums and the Stockholm University (Nordström 2012).

The Haga Palace is today in use by the royal family (Nordström 2012). The palace has been out of service between late 1800 hundreds until 2010, when the royal family started to re-use it (Nordström 2012). Houses and towers on the other side of the gulf include Villa Frescati and the Frescati pasture. The view stretched all the way to the Alba Nova University Centre.

A famous entrance to Southern Djurgården is through the 'Blue Gate' (Blå Porten), see Figure 32. Southern Djurgården is one of the more visited areas in the Royal National City Park. It has approximately 10 million visits per year but its peak-season is summer (Nordström 2012). The large number of visits can be because of the areas high number of



Figure 32: The Blue Gate at Southern Djurgården.

attractions (see Figure 31, page 50) and recreational areas which has led to the park being associated as a “people’s park” (Uggla 2014), also Southern Djurgården is called “Evenemangsparken” or the Event’s Park (ETTELVA 2013).

Prince Eugens Waldemarsudde is found on Southern Djurgården. Prince Eugen, 1865-1947, was one of his generations’ best landscape painters he took great care of his home, park and garden. He also built a castle-like mansion, today used as a museum for art installations. It is well-visited (Nordström 2012). Some of the large old houses in the Southern Djurgården have also been built with inspiration of castles in the 1910-1930’s (Nordström 2012). Close to the amusement park Gröna Lund some of the oldest houses in the area are located. These houses are from the 1700 and 1800 hundreds.

The Rosendal Palace is another famous recreational point of interest



Figure 33: The four main areas.

at Southern Djurgården. Close to the palace is the famous Rosendals Garden located. It is an organic vegetable garden with greenhouses it sells plants and coffee, and is a famous destination for tourists and locals. Along the strait Djurgårdsbrunnsviken old wooden houses are located one of which is today used as a tavern.

Nature

The Royal National City Park is separated into four main areas, see Figure 33, page 52; Ulriksdal, Haga, Northern Djurgården and Southern Djurgården (Nordström 2012).



Figure 34: Some of the trees in the Park of Haga, the oak is the park's 'character tree'.

Stockholm has the nickname "the green and blue belt" because of its archipelago. This is also one of the characteristics that Stockholm is famous for. The park contributes with the image of a healthy city environment (Nordström 2012).

The parks environment has a wide range of different types of nature (Nordström 2012) from the old oak woodlands to a botanical garden. The botanical garden Bergian Garden of Hortus Bergianus is located in Northern Djurgården. It is a serene, beautiful and peaceful garden with vegetation from different corners of the world. Northern Djurgården is one of the four main areas in the park, it has the largest and most amount of wetland and lakes: Lappkärret, Laduviken, Uggleviken, Lillsjön and Spegeldammen (Nordström 2012).

In the park broadleaved and coniferous forest can be found. Tree types include the alder (*Alnus*) and oak (*Quercus*), see Figure 34. The Royal National City Park has large manmade lawns, with tree avenues around



Figure 35, 36: The ground vegetation at the Park of Haga and at Southern Djurgården.

them. One of these can be found at the Stockholm University campus.

Brunnsviken, a gulf, is connected to the ocean through a very small strait called Ålkistan (Nordström 2012). On the west side of the gulf Brunnsviken is the Park of Haga located. The former farm later turned pleasure garden, with the inspiration of an old English park, have elements of forest areas as well as larger pastures (Nordström 2012). Trees within the Park of Haga are mostly deciduous trees, such as Beech (*Fagus*), birch (*Betula*), oak (*Quercus*) and nut-tree (*Corylus*) (Nordström 2012). Evergreens at Haga include different types of pine (*Pinus*) and fir (*Abies*) (Nordström 2012). Example of what type of ground vegetation can be found at the Park of Haga see Figure 35, page 52.

At Southern Djurgården there are outcrop of quartz – feldspar rich sedimentary rock. In the park of Haga, just like on Southern Djurgården there are outcrops of rock (SGU 2009). Mostly its quartz-feldspar-rich



Figure 37: The large trees, a lot of them oak, at Southern Djurgården get a lot of space especially around the old castle like houses.

sedimentary rock (sandstone, greywacke). In the north park of Haga the outcrops are acidic intrusive rock such as granite (SGU 2009).

South of the pasture of the Copper Tents at Haga is a cave located. The Cave has a small stream of water coming out from it. The outcrops are higher here. The Cave is human made, the plan was to get water from it to a new building, but this was never built (Information sign 2014).

Vegetation found at Southern Djurgården include Virginia creeper (*Parthenocissus quinquefolia*). During the off-season the street room is big, with good space for traffic and people. The streets are scaled for people and not for traffic.

In Southern Djurgården's the green areas get more space than in another parts of the park, especially around the castle like houses, it is a high percentage of large trees. The old big trees are evergreens, such as pine (*Pinus*) and fir (*Abies*), and deciduous trees, oaks (*Quercus*), birch (*Betulus*), horse chestnut (*Aesculus hippocastanum*) and lime-tree (*Tilia*). The ground is covered with wood anemones (*Anemonoides nemorosa*) and undergrowth, see Figure 36, page 52.

Another part of the Royal National City Park with large houses and garden is the area called Diplomatstaden (Diplomatic town), example of how it can look like see Figure 37. The trail along the strait Djurgårdsbrunnsviken towards Kaknästornet, which is visible in the distance, may be inspired by old English parks because the path is large and the vegetation is well managed. The big path lead up to a few museums, the area is again inspired by old English parks. North of the museums is the large Kaknäs pasture (Kaknäs ängar).

Inside the Royal National City Park's border some of Stockholm's islands are located. Two of them, the islet Skeppsholmen, see Figure 38, page 54, and the smaller islet of Kastellholmen, are located to the west of Southern Djurgården (Länsstyrelsen i Stockholms län 2014). Skeppsholmen is the home of some old buildings including the Admiralty House, different types of museums, a hostel, church. The islet Kastellholmen has an old castellan, or fort, on it, since 1670 it's been rebuilt after this (Sjögård 2014).

A park goal is easy access, to and in the park, for everyone (Nordström 2012). The Royal National City Park is easily accessible through many various types of public transits (Nordström 2012). Transits include train, boat, buss, and trams. The park's goals include better access through building up better and more connected networks. Networks that are prioritized are for pedestrians, bike lanes, and public transit (Nordström 2012). These types of transportation are prioritised ahead of private transportation such as cars (Nordström 2012).

It is easier to access the south of the park than the north with public transportation (Nordström 2012). Because the transit network is more developed and connected in the south of the park.

There are parts, the 'calm zones', which are only accessible if walking. This is to keep the parts free from city sounds for people to de-stress (Nordström 2012).

There are some roads with heavy traffic around the park's borders as well as inside the park. One example of these roads is the E4/



Figure 38: View of Skeppsholmen from Gamla Stan.

Uppsalavägen, located right beside Stockholm University campus and The Swedish Museum of Natural History (Naturhistoriska riksmuseet). These roads with heavy traffic can act as a barrier in the park for flora and fauna. Because of the heavy traffic there is a fee during rush hours.

The city of Stockholm offer bike rentals to promote more environmental friendly transportation (Nordström 2012, Länsstyrelsen i Stockholms län 2014).

Management and maintenance

The National City Park Regulation, 2009:55, dictated that a management plan had to be made for each national city park (Nordström 2012). Written with the possibility for future national city parks in mind as well as a paragraph only regarding the Royal National City Park (Nationalstadsparksförordning 2009). In collaboration with representatives from different organizations the management plan, 2012, was designed (Nordström 2012). The plan is a long-term directive, made to last 5-7 years (Nordström 2012). The management plan follows the Planning and Building Acts (2011:90) rules and guidelines to make an overall view of the parks goals and directions (Nordström 2012).

Some of the goals and vision in the management plan is taken from the law-binding documents these can be used in trials, while the goals not written in any law-binding document has no statutory function (Nordström 2012).

The park is divided into four main areas. To easier manage the park it has been divided into 15 management areas with similar management needs (Nordström 2012). map over the management areas see Figure 39, page 55. These areas all have their own visions, directions and goals (Nordström 2012). The parks 15 management areas are made up by a wide range of different types of nature (Nordström 2012).

One of the parks more famous environments are the old oak woodlands (Nordström 2012). The oak woodlands have their own goals and visions in the management plan, together with other broadleaf environments. The oak trees are the parks character tree (Nordström 2012).

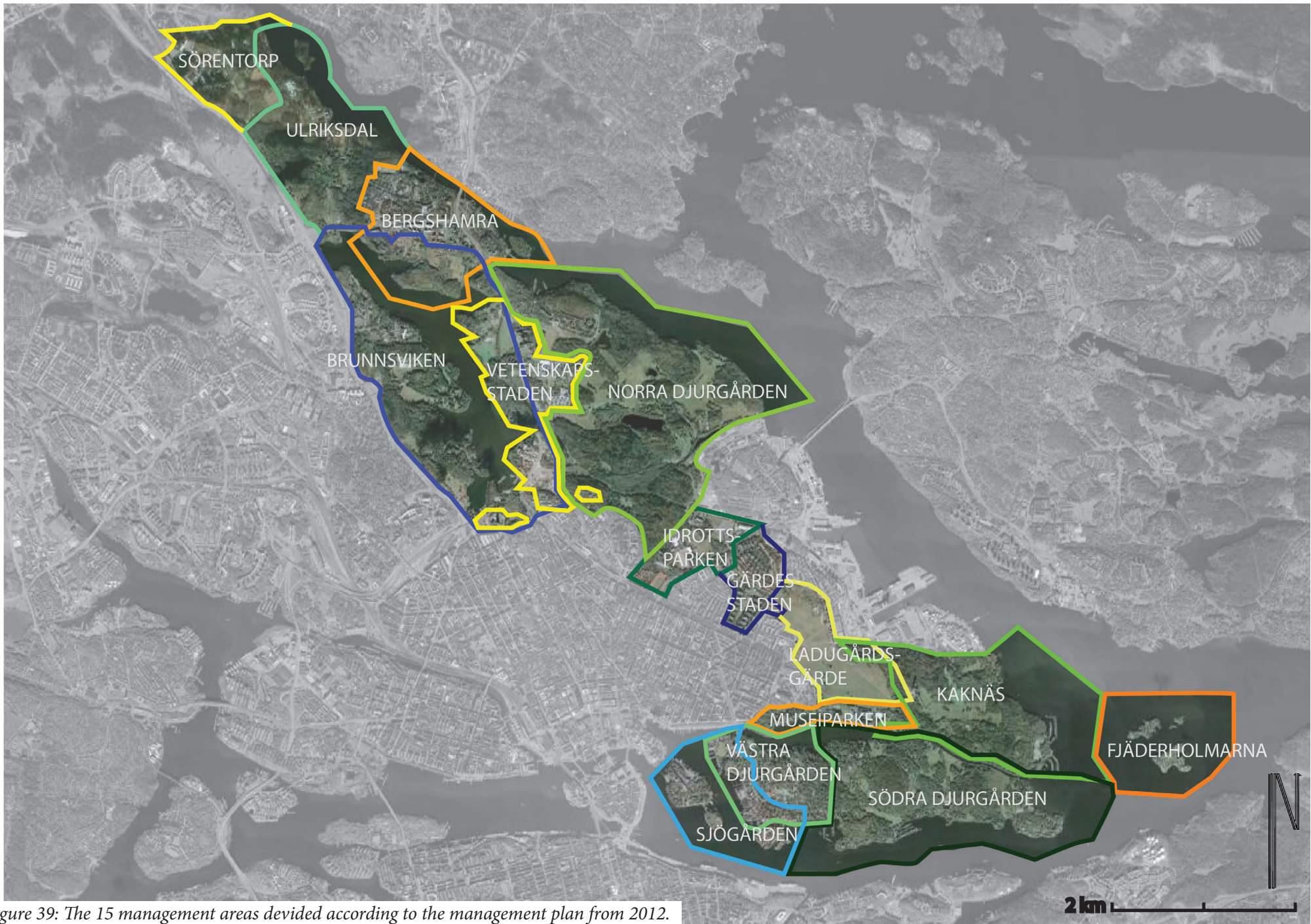


Figure 39: The 15 management areas divided according to the management plan from 2012.

Workshop

The workshop was called (Hitta rätt – Nationalstadsparkens okända guldkorn) “Finding your way – the Royal National City Park hidden gems”. This workshop was the second of two. The first workshop focused on collecting knowledge about the biodiversity in the Royal National City Park. The second, and attended, workshop primarily focused on knowledge about the cultural landscape, landscape affected and changed by human activities, in the park.

This second workshop's object was to get a visible integration about how to interact between nature- and culture values. The attendance at the workshop was asked to keep the question “how to find the parks unknown or hidden gems” in mind during the workshop. Discussions during the workshop focused on how to get the public interested in what the park can offer, in activities, findings in nature such as rare birds or flowers, historical places, and how to make these more interesting. A historical place in the park is the Temple of Cupid and Psyche from



Figure 40: The Temple of Cupid and Psyche.

1795, see Figure 40. Which sign, see Figure 41, do not mention the Royal National City Park. Information on the sign is in both English and Swedish. Other discussion topics were included human impact on the landscape, the re-branding of the park, to make it more famous for a wider public, was another topic. All of the workshops attendances contributed with their knowledge in regards to the topics.

The Royal National City Park's three main purposes are:

1. Biodiversity, in the area,
2. Biological consequences of human impact on the landscape, and
3. Strengthen the public awareness of, and interest in, the biological values in the area.

The parks hidden gems include animals, plants and places. To help the public find hidden gems in the park there are today databases and websites. People can log in and report discovery of animals and plants.

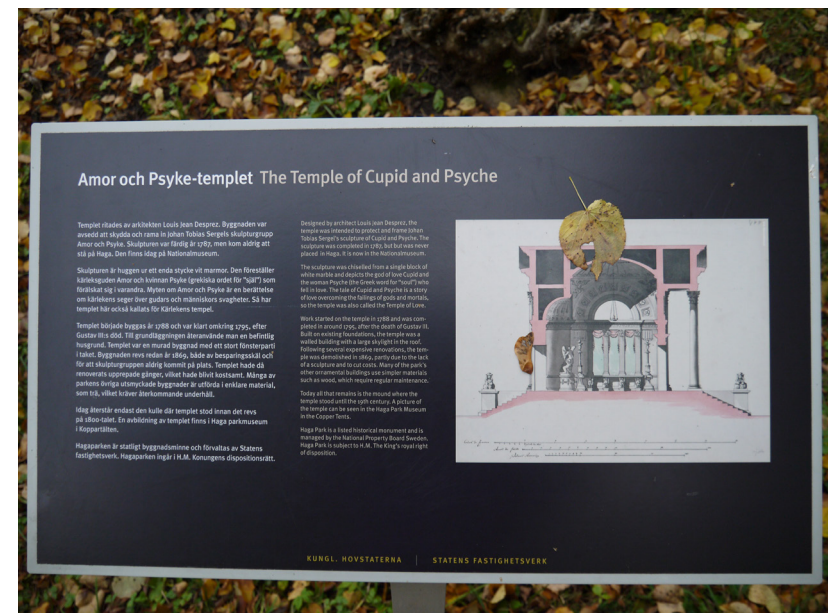


Figure 41: The Temple of Cupid and Psyche's sign.

This is to help others see said animal and plant. To protect red listed animals and plants these can't be sourced as to not disturb or threaten them.

With a landscape it's important to feel part of it. If people feel part of something, feel responsible, they will try to take care of it.

In the park humans have had a large impact on the landscape for a long period of time. Humans have affected the park through blasting, example of this can be seen in Figure 42. The landscape has been used for different objectives such as agricultural needs, as game parks, for recreational use etc. Other evidence of human interaction is all the old



Figure 42: The Grotto, in the Park of Haga, is one example of human impact in the park. It has been done through blasting.

houses, palaces, etc. It's important to understand that humans have affected the landscape and how it is affected. It is difficult to read a landscape because it can be interpreted in different ways.

Famous elements and attractions in the park include Ulriksdals Palace, Rosendals Palace, the park of Haga, Gröna Lund. These attractions are famous of and by themselves. Through re-branding, according to the people of the workshop, the Royal National City Park it can become more well-known as a whole and as a national urban park, which can lead to the concept and park as such gaining a wider public knowledge.

Today the park is more static it is not dynamic as it was before. The landscape became what it is today by continuously changing. A problem managing a protected landscape is if it should be allowed to continue changing or if it should be managed so it stays static.

An attendee at the workshop told about "The green wave battle" (Gröna vågen slaget) started at Stora Skuggan, to retake the landscape and re-vegetize it. The battle was to keep the green spaces in the city and to save the green wedges leading into the core of the city. It was also to save the connections and the buffer for flora and fauna and recreation. The Royal National City Park is a part of one of the green wedges that is called Järvakilen.

Discussion

The goal with this thesis was to compare the two national urban parks found in Canada and Sweden. The aims were to gain knowledge about the different terminology, the context, the concept, objectives, history and management.

The comparison made between the parks has been divided up into different points of interest. After which the concept 'urban wilderness' will be discussed.

Information was gathered through a traditional literature review together with case studies. The two case studies included three one-day site visits to the Rouge National Urban Park, two two-day site visits to the Royal National City Park. The site visits were made so that equal amount of time was spent in the two parks.

One interview was held with management for Rouge Park, before it became the Rouge National Urban Park. One workshop was attended regarding the Royal National City Park's cultural landscape. Even though the way information was gathered was differed it was deemed compatible.

Information regarding the parks was also gathered through the park's homepages, policy documents, books and articles about the parks. The information regarding the Rouge National Urban Park was gained both as Rouge Park, the urban park, and as the Rouge National Urban Park. Information regarding the Royal National City Park was gathered as the national urban park. This may be because Royal was founded as a national urban park at the same time that Rouge was founded as an urban park. Therefor some of the information regarding Rouge may differ in the nearby future. Information regarding Royal on the other hand is less likely to change.

Background

The accessibility to land is different between Canada and Sweden. Canada has a larger amount of public land, crown land, closer to 90% of its landmass (Ontario 2014), while in Sweden private land almost makes up for half the landmass (SCB 2013). In Sweden there is a freedom to roam right which lets people access private land (Bengtsson 2014), with exceptions, this right does not exist in Canada. The right is usually used for access to nature areas (Miljöbalken 1998). This shows that the public access is high in both countries.

All Canada's national parks are situated on crown land (Ontario 2014). Even though most of Sweden's forests are owned by private actors (SCB 2013), its national parks are an exception. Canada's national parks have an entrance fee that Sweden's national parks do not. The entrance fees to national parks in Canada may lead to that not everyone can afford to visit the parks. Neither Rouge National Urban Park nor the Royal National City Park will have an entrance fee so that everyone can afford to visit them. The Royal National City Park has several stakeholders, and landowners, which is different to the ownership of Swedish national parks. Several stakeholders make the management more complicated. For Parks Canada to manage Rouge National Urban Park they need to own the land, just like with their national parks. But Parks Canada will have a collaboration between other groups of interest.

History

Rouge Park and the Royal National City Park both were founded in 1995. One as an urban park the other as a national urban park. Rouge Park became Rouge National Urban Park in May 2015. The transfer of land is still in process, partly because of critic about the protection, or lack of, Rouge National Urban Park has received. Back in 1995 the Royal National City Park also got critics of being “a strong protection in a weak situation” (Holm et al 2002). In Rouge National Urban Park’s situation the protection is revoked if public infrastructure needs to be installed or repaired (Bill C-40 2015). This means that harm can come to the parks nature (Honderich 2015). If instead during the installation priority was set to do as little harm as possible to the parks nature the protection would be stronger. In the Royal National City Parks case no harm is allowed to the natural and cultural values but exception to already developed areas are made (Holm et al 2002). The law leaves possibilities for interpretations which weakens it. From this experience it is clear that Rouge National Urban Park’s law need to be so clear no interpretations can be done to harm the natural and cultural values of the park.

Concepts

National urban park has many similar terms that can be confused with. To be able to discuss the concepts below is a short recap.

National Urban Park – a protected area in an urban setting, with urban elements in it. The parks have high natural (see Figure 43), cultural, recreational and agricultural values (see Figure 44).

National City Park – a synonym to national urban park, the term is sometimes used in Finland and Sweden. The protected area is in an urban setting, it protects the areas ecological, recreational (see Figure 45, page 60), natural and cultural values with emphasis on the cultural landscape.

Urban National Park – which is a national park in, or close by, an urban setting, these parks have no urban elements in them. They follow the legislation for national parks.

Urban Protected Area – Protected areas in urban situations, they have no international recognition yet. They often have a high level of naturalness with a low impact of humans. They are often threatened by urban sprawl or other threats from the nearby urban area. An example to the term is the collaboration, between a handful national parks and their cities, called Urban Protected Areas Network, UPA (2014).



Figure 43: Example of the Rouge National Urban Park’s vegetation and the bird box.is part of the many restoration projects in the park.

Figure 44: Some of the farms in the Rouge National Urban Park, on the agricultural landscape part of the park.

The concepts are similar but can have small details that make them different from each other. Because of the small differences it is easy to misunderstand or confuse them with each other. To make it easier to use them correctly it is therefore important to first define them.

The synonyms national urban park and national city park are protected areas in urban setting, with urban elements within the parks boundaries. Urban national parks and urban protected areas are defined as national parks in urban setting without urban elements. Some differences between the concepts are the allowance of urban elements, as well as what legislation they follow and the ownership of land. A similarity these concepts have is the threat the nearby urban areas make.

The term national city park has some international recognition, though this far only to countries in Scandinavia. Because of the likelihood of manmade elements found in national city parks, and national urban parks, they differ from urban protected areas as well as urban national parks.



Figure 45: Some of the recreational sites in the Royal National City Park. Amongst them in the picture is Junibacken, the Vasa museum,, Nordiska museet, Aquaria Vattenmuseum and Abba the museum.

In the book 'Urban Protected Areas' Trzyna (2014b) bring up that urban protected areas are not identified by government, exempt for a few exceptions such as the national urban parks in Finland. In this case the national urban park is included as an urban protected area, this is not the case for the Swedish national urban park. A theory regarding the reason Finland's national urban parks are mentioned and not Sweden's national urban park may be because, as Trzyna (2014b) mentioned in the disclaimer, not all countries have been covered. Another reason may be because Finland is actively using the law and designing more national urban parks, while Sweden have recently not designed more national urban parks. Another theory is that Sweden's national urban park is mostly made up of cultural landscapes, which means it has a too high percentage of human influence to be regarded as an urban protected area. Regular lawns can be found within the Royal National City Park, around the Stockholm University area see Figure 46. Trzyna (2014b) stated clearly that these types of lawns have a too low naturalness index score and therefore parks with them are not included as urban protected areas. Rouge National Urban Park, as stated earlier, being a new national urban park means it might now fill the requirements to be regarded as an urban protected area. But because of its high percentage of agricultural landscape it might not fill the requirements of an urban protected area.



Figure 46: One of the landscapes found in the Royal National City Park are the big lawns around the Stockholm University Campus.

Visions and goals

Both visions for the national urban parks, Rouge National Urban Park and the Royal National City Park, are to preserve the areas many natural, cultural and recreational values. The areas are valuable for the locals and tourists because of their location near large cities. Both parks have been described as “people’s park” (Uggla 2014, Rouge National Urban Park Initiative 2012).

The cornerstones for the parks overlap each other in some of their goals. Rouge National Urban Park has four cornerstones and the Royal National City Park has five, as found in the ‘literature review’. Rouge National Urban Park has nine extra guidelines to follow. In both cases the history of the landscape is an important part both in a natural and cultural sense. An example of different formulations include that for Rouge National Urban Park ‘conserving natural heritage’ is important while the Royal National City Park formulate it as ‘biodiversity’.

A difference in the cornerstones is that Rouge National Urban Park wants to support its farming community which the Royal National City Park has none. On the other hand the Royal National City Park values its royal influence which Rouge National Urban Park has none of.

Both parks state the importance of its connection with the public, whether it is trough knowledge, celebration, support, fitness or entertainment. Again the two parks formulate it in different ways.

Four themes

Information

In size Rouge National Urban Park is 79,5 km² compared to Royal National City Park that is 27 km². Rouge National Urban Park is almost three times the Royal National City Parks size, if Rouge National Urban Park gets the promised parcel from the government. Otherwise Rouge National Urban Park will be around 58 km² and twice the Royal National City Parks size.

Population in the area Rouge National Urban Park is situated in the Great Toronto Area with around 7 million people, the Royal National City Park is situated in the Great Stockholm Area, close to 2,2 million people. Both cities are the largest in their country.

It is unclear how many visitors Rouge National Urban Park has. For Royal National City Park there are over 15 million people visiting the park each year. One of the reasons is the Stockholm University inside the park.



Figure 47: Sign in the Rouge National Urban Park about its forest type.

Figure 48: Sign found in the Royal National City Park about a human-made cave.

Both parks seem to have been initiated by bottom up initiatives. The population wanted parks to better protect the areas when exploitation plans threatened them. The initiatives seem to have quickly been adopted by influential stakeholders.

Rouge Park has its own website with information about the park, as well as information about the transfer to becoming a national urban park. Information about the Rouge National Urban Park can be found on Parks Canada website, as well as Rouge Park's website. The Royal National City Park has its own website with information about the park and its activities.

Information signs can be found within both parks as well as at some entrances. Both Rouge National Urban Park and the Royal National City Park have visitor centres.

The Royal National City Park's Administrators, the Royal Djurgården Administration, has an annual turnover of around 130-million SEK, which is about 20.2-million Canadian dollars (Sveriges Kungahus 2015). Over the first ten years Rouge National Urban Park will receive \$140-million Canadian dollars, with annually \$7.5-million Canadian dollars extra from the federal government (Ligaya 2012).

Information in the park can be found on different types of signs. Different signs are used for different information. The park's entrance signs differ. In the Rouge National Urban Park the main sign only has the parks name, while the entrance sign for the Royal National City Park it has a information about the history of the park. Other signs are used to promote Rouge Park slogan (Figure 48), information about a natural or cultural value in the park (Figure 46 and 47, page 61) or about the parks trails (Figure 49). Signs are also used in the park to inform how to behave and think about (Figure 50).



Figure 49: Rouge Park slogan signs.



Figure 50: Sign urging people how to behave in the Rouge National Urban Park.

Recreation and accessibility

Accessibility can be divided into two subcategories, accessibility to the parks and accessibility in the parks. First of accessibility to the parks:

Rouge National Urban Park is accessible by a 30 minutes' drive from downtown of Toronto. There are housing that have easy and quick access to the park, because the houses are located close to the parks borders in Toronto, Markham and Pickering. Some houses are located inside the borders of the park.

The south end of the Royal National City Park is located right in the very downtown of Stockholm, see Figure 51. It is easy to walk between the downtown of Stockholm into the park. Houses, museums and other buildings are found along the parks borders as well as in some of the parks developed areas, see Figure 52.

Both Rouge National Urban Park and the Royal National City Park are accessible through several different transportations, both privately



Figure 51: Gröna Lund, at Southern Djurgården, the Royal National City Park, found close to downtown Stockholm.

Figure 52: Eric Ericssonhallen in the Royal National City Park.

and publicly. The difference is while it is easier to access Rouge National Urban Park with private transportation the opposite applies for transportation to the Royal National City Park. A reason why the transportation is different might be because Rouge National Urban Park is situated in a North American city where the infrastructure is built up around private transportation. While the Royal National City Park is situated in a European city with a well-developed public transportation system and where there is a fee for private transportation during rush hours. Another reason is that Rouge National Urban Park is situated at the border of several cities and towns with good parking possibilities. The Royal National City Park on the other hand is situated in the very downtown of Stockholm, where parking in some parts of the park is more difficult.

Accessibility in the parks: The infrastructure in the parks varies from large roads and railways to trails for recreational use (Figure 53 and 54). The trails in Rouge National Urban Park when the park has transferred into a national urban park will continue to evolve for a larger and



Figure 53: Trails in the Royal National City Park.

Figure 54: Trails in the Rouge National Urban Park.

better connected trail system. The Royal National City Park has plans to continue develop the parks pedestrian and bike network to make it more connected and accessible. But some of the parks “calm zones” are less easily accessible for the public to keep their calm and quiet qualities and will remain this way. Both parks have future goals of continue development for their trails and hiking and bikes networks.

Recreation is an important aspect for both Rouge National Urban Park and the Royal National City Park. Both Parks have guided tours, the guided tours in Rouge National Urban Park are held by volunteers. Some of the guided tours in the Royal National City Park can be taken by boat. Recreation such as hiking, biking and de-stressing can be done and is encouraged in both parks.

Rouge National Urban Park do not have manmade attractions, as the Royal National City Park has, though the Rouge National Urban Park has a visitor centre and some other facilities for the visitors, an example is the view tower see Figure 55. There are areas in Rouge National Urban



Figure 55: View tower in Rouge National Urban Park.

Figure 56: The Rouge Beach at the Lake Ontario, the Rouge National Urban Park.

Park for recreational activities but to lower the amount of recreational activity visitors they have to bring their own equipment. Swimming in the Rouge National Urban Park can be done at the Rouge Beach, see Figure 56. The reason to not increase the visitors is to keep the level of protection of the areas nature so it is not threatened and lessens its value because of disturbance and destruction. Conflict may arise between how well an area should be protected and how much recreation may disturb. A future activity in Rouge National Urban Park will be farmers market for the parks farmers to connect with the surrounding city population. In the Royal National City Park, on the other hand, a lot of different manmade attractions can be found, examples are Junibacken and Gröna Lund (see Figure 51, page 63), the park have a visitor centre since 2013.

The two parks have a large diversity of various recreational attractions that the other do not have. In Rouge National Urban Park the offered attractions and activities are less manmade then the Royal National City Park’s attractions and activities. A reason can be because the park’s location in their cities. Rouge National Urban Park is located between three cities at their borders while the Royal National City Park has been surrounded earlier by its city.

Nature

Both parks are connected to larger green infrastructure. The parks are important parts of these large green infrastructures because of their locations and their biodiversity.

Rouge National Urban Park and the Royal National City Park have similar natural landscapes with some similar type of vegetation. Rouge National Urban Park protects a rare, for Canada, deciduous forest, see Figure 58, region only found on 1% of Canada's landmass. It is the large oak woodlands in one of the Royal National City Parks that make up valuable habitats, the old oaks, see Figure 57, are famous and they have a key role for parts of the parks endangered species.

Royal National City Park do not only protect mainland the protection also contains ocean and islands they are a part of Stockholm's famous archipelago. Which Rouge National Urban Park do not have. A type of landscape that only Rouge National Urban Park has is its active agricultural landscape, see Figure 60, which takes up about half of its land.

In both Rouge National Urban Park and the Royal National City Park cultural landscape is found. The cultural landscapes found in Rouge National Urban Park include old travel roads, rural settlement and patterns in the landscape. While the cultural landscapes in the Royal National City Park, see Figure 59, are agricultural land which is no longer in use, hunting grounds, grazing grounds for deer, pastures and as large pleasure gardens. The Royal National City Park also has old allotments within the park that have a large impact to its insect life.

Both parks want to re-grow vegetation and animals within the parks. This is done through projects such as re-vegetating areas, building up old wetland and building homes for animals such as bats or birds. Promoting biodiversity is also done by leaving dead trees for insects to inhabit.



Figure 57: Oaks in Royal National City Park.



Figure 58: Forest in the Rouge National Urban Park.



Figure 59: Meadow with small lake in the Royal National City Park.



Figure 60: Agricultural landscape in the Rouge National Urban Park.

Management and maintenance

Rouge Park had an alliance of voluntary groups and agencies that managed the park between 1994 to 2012. During the transition phase it is Toronto Region Conservation Authority (TRCA) that manages the park. They will hand over management to Parks Canada as the park turns into Rouge National Urban Park. Stakeholders, partners and volunteers will, based on their interest, partake in the management. The hand over is because Parks Canada need to own the land before they can manage it. The agricultural land will be leased to farmers.

In Royal National City Park's case there are several organizations that own the land. Royal National City Park in Stockholm it is the National Property Board of Sweden that manage and own the park, together with Stockholm city and Solna city. The park is cared for by different organizations for example is it Akademiska Hus that take care of the land around the university, around 80% of all the parks land is cared for by the National Property Board of Sweden and the Royal Djurgårdens Administration. The organization for the park falls to the County Government.

Both parks management plan bring up the importance of good collaborations between different groups of interest. Both management plans are directives how the parks should be managed and how they can continue to develop in a long-term solution. The management plans are not binding but written as guidelines. The parks have their own Act that protects them legally.

Urban wilderness

The term urban wilderness, according to Daniel (2008) and Jorgensen (2012), can be described as an urban area, often forgotten or left by society's regulations, in its natural process back to its wild state. These areas can be used for activities usually not allowed in a city an example is graffiti walls, see Figure 62, page 67. Gobster (2012) explain urban wilderness as a "living landscape" responding to conditions from the surrounding environment. An successful urban wilderness is the Nature-Park Südgelände in Berlin, Germany, see Figure 61. It fits in the fourth subcategory, that Gobster (2012) description as 'recovered nature', for urban wilderness areas. Where nature has taken over in a larger abandoned area and who's ecology can be of value. The nature-Park Südgelände has high ecological value which is protected see Figure 63, page 67.

Urban wilderness areas used as islands with higher or some ecological value, they can provide usefulness in city planning purposes as a connection between larger nature areas.

The overall definition of an urban wilderness does not correlate with the definition for a national urban park. Urban wilderness is an urban area progressing back to nature, and a national urban park is a large protected area with urban elements situated in an urban area. They come from the opposite sides in the process towards their natural point of being. On one hand the developed area is overtaken by vegetation and on the other hand the area starts off with high natural values with some



Figure 61: Südgelände, Berlin, Germany.

urban elements and to stop the development it is protected. When an urban wilderness, such as Südgelände, have progressed to a high ecological value area and an important part of the cities green infrastructure other factors separate the two concepts. Some factors that separate the two concepts are:

- Different legislation,
- Different definitions,
- How they have been founded, and
- Size (urban wilderness have a larger range, from small spaces to larger, while national urban parks tend to generally be larger).



Figure 62: Graffiti-wall in Südgelände, Berlin, Germany.

Figure 63: Hightened trails are used to protect the vegetation on the ground from being trampled on by the visitors in Südgelände, Berlin, Germany.

Factors that are similar between the concepts for urban wilderness and national urban park are that both concepts are meant to reconnect people with less managed nature, than regular urban parks. Both concepts are beneficial from an environmental view, they can contribute to its city's ecosystem as well as be of service in regards to environmental problems, such as a buffer during heavy rain.

National urban parks and urban wilderness' areas have one more similar aspect. These areas connect the past with the present (Figure 64).



Figure 64: Pole at Evergreen Brickworks.

Conclusion

In this thesis the relevant concepts has been defined and explained. They include national urban park, national city park, urban national park, urban protected area and urban wilderness.

National urban park, and the synonym national city park, are both protected areas in an urban situation. They have urban elements within, which urban national parks do not have. Therefor the level of naturalness is higher in an urban national park, having less impact from humans, than a national urban park has.

National urban parks have a different legislation than urban national parks, because urban national parks are national parks in an urban setting.

The three different concepts all protect their natural values. A national urban park also has high cultural, recreational and agricultural values. In the national city parks case emphasis is on the cultural landscape.

Urban protected areas are protected areas in urban situations, like the concepts above, threatened by its location close to an urban area. Urban protected areas have no legislation of its own. The concepts above can be included as examples of urban protected areas, with the requirement that the area has to have a high level of naturalness and low impact from humans. Examples are the national urban parks in Finland.

The similarity all concepts above have is that they are or have been threatened in one way or another, often by urban sprawl or in other ways, by the nearby urban area and its population.

Urban wilderness is an urban area abandoned by society in some cases the natural process has reclaimed the area bringing it back to a wilder state. Other similar concepts include urban wildscape and urban woodlands.

Urban wilderness differs from the concept national urban park because it has different legislation, definition, the areas have been founded in different ways and urban wilderness areas have a larger range of its

area size and tend to be generally smaller than national urban parks. Similarities include reconnection people with less managed nature, beneficial for environmental purposes (heightening the biodiversity, be part of larger ecosystems) and help against environmental problems.

The Rouge National Urban Park and the Royal National City Park have similar main objectives or goals. The Rouge National Urban Park has four main points and the Royal National City Park has five. The similar objectives are that both parks will protect their natural and cultural values as well as reconnect and educate people.

The Rouge National Urban Park will also celebrate its cultural heritage and supporting the farming community. The Royal National City Park on the other hand strive to connect people with the park through health and fitness, as well as knowledge and entertainment. Another object for the park is to protect its royal influences.

Both parks have their own legislation. Most of the Royal National City Park is also protected as an area of national interest for cultural heritage conservation. The Rouge National Urban Park Act was formally established in May 15th, 2015. It is still in the transfer phase, meaning that land is being transferred to the federal government to become the national urban park. The park will not become a national urban park if not the land is transferred and at the moment the transfer is on hold.

The parks differ in size the Rouge National Urban Park will be two or three times the size of the Royal National City Park. Both parks are situated in developed countries, close to the largest urban area in the respective countries.

The parks have similar climate. Though the Rouge National Urban Park have longer and colder winters and longer and warmer summers, and short spring and autumn. The Royal National City Park have on the other hand more equally long seasons, and compared to the Rouge National Urban Park the winter is milder and the summer colder. From the site visits made the same month of the same year it was clear the Rouge

National Urban Park winter was still in force when the Royal National City Park's spring had started.

Though the parks have similar natural landscapes, with similar type of vegetation. In both parks deciduous forest can be found. This is one reason the Rouge National Urban Park needs protecting. The old oak woodlands are famous and are a reason the Royal National City Park is protected. The Rouge National Urban Park has an active agricultural landscape which the Royal National City Park does not have. In Royal National City Park on the other hand the cultural landscape is emphasized.

Both parks are part of larger green infrastructure. The Rouge National Urban Park connects the Oak Ridge Moraine to Lake Ontario, making it an important part of a larger ecological network, as well as being part of the Ontario Greenbelt. The Rouge National Urban Park is part of Toronto's green network as can be seen in Figure 65. The Royal National City Park is an important part of the ten green wedges. The park connects the wedges together through downtown Stockholm.

One of the conclusions that can be made through the discussion about the two parks legislation is that the clearer it is the less leeway it has to interpretations and the stronger the protection will be.



Figure 65: Map over the green network in Toronto, found at Evergreen Brickworks.

Reference

Abelin L. (2008) *Naturreservat & Nationalparker Pärlor i den Svenska naturen*. Stockholm: Designförlaget. Naturvårdsverket.

Aengst P. (2000) The Yellowstone to Yukon Initiative: A New Conservation Paradigm to Protect the Heart of North America. In: Darlings LM (ed). *Proceedings of a Conference on the Biology and Management of Species and Habitats at Risk: Volume two*. Ministry of Environment, Lands and Parks, Victoria, B.C. and University Collage of the Cariboo, Kamloops, B.C. P.895-900.

Annerstedt M, Nielsen B, Maaruthaveeran S, Konijnendijk C. (2012) *Benefits of urban parks: a systematic review*. IFPRA World. Volume: 2012, Number: 6, p 10-12.

Ballard M, Marshall I.B, and Schut P.H. (2013) *A National Ecological Framework for Canada: Attribute Data*. Ottawa/Hull: Agriculture and Agri-Food Canada, Research Branch, Centre for Land and Biological Resources Research, and Environment Canada, State of the Environment Directorate, Ecozone Analysis Branch.

Barrett S. (2007). *Rouge River Watershed Plan towards a healthy and Sustainable Future*. Toronto: Toronto and Region Conservation. Report of the Rouge Watershed Task Force.

Beatley T. (2012). *Green Cities of Europe: Green Lessons on Green Urbanism*. Washington: IslandsPress, p.1-28, 109-128.

Becker, S., Bryman, A., & Ferguson, H. (2012). *Understanding research for social policy and social work: themes, methods and approaches*. Bristol: Policy Press, p 199-204, 279-282.

Belér B-A, Månsson M, Nordström P, Nyberg L, Strömberg R. (2006) *Framtidens Nationalstadspark, Handlingsprogram del 1: Vision och förutsättningar*. Stockholm. Länsstyrelsen i Stockholms län.

Bengtsson, Bertil. (2014) *Allemansrätten – Vad säger lagen?* Naturvårdsverket.

Berleant A. (2005a). Aesthetic Dimensions of Environmental Design. In: Berleant A, *Aesthetics and Environment: Variations of a Theme*. Aldershot, England: Ashgate Publishing Limited. p17-30.

Berleant A. (2005b) The Wilderness City: An Essay on Metaphorical Experience. In: Berleant A, *Aesthetics and Environment: Variations of a Theme*. Aldershot, England: Ashgate Publishing Limited. p41-48.

Brånhult A. (2010) *Övergivna områden med vild natur i staden – värden och attityder*. Sveriges lantbruksuniversitet. Fakulteten för Landskapsplanering, trädgårds- och jordbruksvetenskap/Landskapsarkitekturprogrammet.

Clark P & Jauhiainen. (2006) Introduction. In: (ed) Clark P. *The European City and Green Space: London, Stockholm, Helsinki and St Petersburg, 1850-2000*. p1-29.

Daniel E. (2008) *Urban Wilderness – Exploring a Metropolitan Watershed*. The Center for American places: Chicago.

Deguignet M, Juffe-Bignoli D, Harrison J, MacSharry B, Burgess N, Kingston N. (2014) *2014 United Nations List of Protected Areas*. UNEP-WCMC: Cambridge, UK.

Department of Justice. (2015) *Canada National Parks Act* (S.C. 2000, c.32). Government of Canada: Justice Laws Website.

Dilsaver L.M & Wyckoff W. (2005) *The Political geography of National Parks*.

Dudley N. (2008) *Guidelines for Applying Protected Area Management Categories*. Gland, Switzerland: IUCN.

Edensor T, Evans B, Holloway J, Millington S & Binnie J. (2012) Playing in industrial ruins – Interrogating teleological understandings of play in spaces of material alterity and low surveillance. In: ed. Jorgensen A and Keenan R, *Urban Wildscapes*. London and New York: Routledge. p65-79.

Elmqvist T, J. Colding J, Barthel S, Borgstrom S, Duit A, Lundberg J, Andersson E, Ahrne K, Ernstson H, Folke C, and Bengtsson J. (2004) The dynamics of social–ecological systems in urban landscapes—Stockholm and the National Urban Park, Sweden. In: eds. Alfsen-Norodom C, Lane B.D, and Corry M. *Urban biosphere and society: partnership of cities*. New York, USA: Annals of the New York Academy of Science. P 308–322

Ernstson H & Sörlin S. (2009) Weaving protective stories: connective practices to articulate holistic values in the Stockholm National Urban Park. *Environment and Planning A*, volume 41, p1460-1479.

Erséus C, Grimm R, Healy B, Lundberg S, Rota E & Timm T. (1999) Clitellate diversity in Nationalstadsparken, an urban national park in Stockholm, Sweden. In: (eds) Healy B.M, Reynoldson T.B & Coates K.A. *Hydrobiologia 406. Aquatic Oligochaetes*. Netherlands: Kluwer Academic Publishers. p101–110.

Foresta R.A. (2011) *America's National Parks and Their Keepers*. Resources for the Future Press (RFF Press): New York, USA.

Fredriksson C, Lundström M.J and Witzell J. (2013) *Planning and sustainable urban development in Sweden*. Stockholm: Swedish society for Town and Country Planning.

Garratt J E. (2000) *The Rouge River Valley: An Urban Wilderness*. Toronto: Natural Heritage/ Natural History Inc.

Gillham, B. (2010) *Case Study Research Methods*. Continuum International Publishing, London: GBR.

Gobster P.H. (2012) Appreciating urban wildscapes: towards a natural history of unnatural places. In: ed. Jorgensen A and Keenan R, *Urban Wildscapes*. London and New York: Routledge. p33-48.

Hanneberg P & Löfgren R, Natuvårdsverket. (2010) *Nationalparkerna i Sverige*. Solna: Alfabrint.

Holm L. Schantz P. & Fröberg D. (2002) *Nationalstadsparken - ett experiment i hållbar utveckling. Studier av värdefrågor, lagtillämpningar och utvecklingslinjer*. Forskningsrådet för miljö, areella näringar och samhällsbyggande. Formas: Stockholm.

Jorgensen A. (2012) Introduction. In: ed. Jorgensen A and Keenan R, *Urban Wildscapes*. London and New York: Routledge. p1-14.

Konijnendijk C.C. (2008) A Forest for the Future. *The Forest and the City: the Cultural Landscape of Urban Woodland*. Springer Science, Business Media B.V. p189-206

Langer A. (2012) Nature-Park Südgelände, Berlin. In: ed. Jorgensen A and Keenan R, *Urban Wildscapes*. London and New York: Routledge. p152-159.

Lister A.M (2007) Sustainable large parks: ecological design or designer ecology? In: *Large Parks*. Ed: Czerniak J. and Hargreaves G. Princeton Architectural Press: New York. p. 35-57.

Livey J, Deputy City Manager, Cluster B. (2015) *Rouge National Urban Park Draft Management Plan*. Toronto: Staff Report Action Required. PE2.1

Löfgren R. (2008) *Nationalparksplan för Sverige – Långsiktig plan*. Stockholm: Naturvårdsverket.

Mambretti I.M. (2011) *Urban Parks: Between Safety and Aesthetics: Exploring urban green space using Visualisation and Conjoint Analysis methods*. ETH/ Institut für Raum- und landschaftsentwicklung.

Mels T. (2002) Nature, home, and scenery: the official spatialities of Swedish national parks. *Environment and Planning D: Society and Space* 20:2. p.135 – 154. [2013-11-10]

Ministry of Natural Resources. (1993) *Draft Rouge Park Management Plan*. Maple, Ontario.

Miljö- och Naturresursdepartementet. (1994) *Nationalstadsparken Ulriksdal-Haga-Brunnsviken-Djurgården*. Stockholm: Regeringens proposition 1994/95:3.

National Archives, The. (2003) *Land Reform (Scotland) Act 2003 (asp 2)*. Crown 2003. The Queen's Printer for Scotland: Carol Tullo.

National Archives, The. (2000) *Countryside and Rights of Way Act 2000*. Crown 2000. Controller of Her Majesty's Stationery Office and Queen's Printer of Acts of Parliament: Carol Tullo.

Naturvårdsverket. (2005) *Riksintresse för naturvård och friluftsliv*. Handbok 2005:5 December 2005. Bromma: CM-gruppen.

Nilsson L. (2006) Stockholm and green space, 1850-2000: an introduction. In: (ed) Clark P. *The European City and Green Space: London, Stockholm, Helsinki and St Petersburg, 1850-2000*. p99-110.

Nordström, P. (2012) *Vård- och utvecklingsplan för Kungliga nationalstadsparken*. Stockholm. Länsstyrelsen i Stockholms län. Rapport 2012:33.

Patin T. (1999) *Exhibitions and Empire: National Parks and the Performance of Manifest Destiny*.

Parks Canada. (2014) *Rouge National Urban Park – Management Plan, Draft 2014*. Toronto: Park's Canada.

Parks Canada. (2015) *Highlights from the Rouge National Urban Park Concept*. Toronto: Parks Canada.

Plieninger T. & Bieling C. (2012) Connecting cultural landscapes to resilience. *Resilience and the Cultural Landscape – understanding and managing change in human-shaped environments*. Cambridge University Press: Cambridge. p3-26.

Rotherham I,D. (2012) The River Don: a linear urban wildscape. In: ed. Jorgensen A and Keenan R, *Urban Wildscapes*. London and New York: Routledge. p131-140

Rouge National Urban Park Initiative. (2012) *Rouge National Urban Park – Concept June 2012*. Gatineau, Quebec: Parks Canada Agency. [2015-03-01]

Sandell K & Svenning M. (2011) *Allemansrätten och dess framtid – utredning av allemansrätten*. Bromma: CM Gruppen AB. Naturvårdsverket. Rapport 6470.

SCB, enheten för miljöekonomi och naturresurser. (2013) *Markanvändning i Sverige*. Sjätte utgåvan. Stockholm: SCB.

Schantz P. (2006) The formation of National Urban Parks: a Nordic contribution to sustainable development? In: Clark P (ed): *The European City and Green Space, London, Stockholm, Helsinki and St Peterburg, 1850-2000*. p159-174.

Skärbäck E & Grahn P. (2012) *Grönska för kunskapande*. Alnarp: Sveriges landsbruksuniversitet. Landskap, trädgård, jordbruk, Rapportserie 2012:9.

Thompson (2012) Places to be wild in nature. In: ed. Jorgensen A and Keenan R, *Urban Wildscapes*. London and New York: Routledge. p49-64.

Trzyna, T. (2014b) Urban Protected Areas: Profiles and best practice guidelines. *Best Practice Protected Area Guidelines Series No. 22*, Gland, Switzerland: IUCN. xiv + 110pp.

Uggla, Y. (2014) Protecting Urban Greenery: The Case of Stockholm's National City Park. *City & Community*, 13:4. American Sociological Association: Washington. p.360-380.

Wells, A. (2011) *Backgrounder*. Rouge Park (Rouge Park Alliance).

Websites

4H. (2013) *Storskuggans 4H gård*. www.storaskuggans4hgard.se [2015-02-01]

Bat Conservation Trust. (2015) *Bat boxes*. http://www.bats.org.uk/pages/bat_boxes.html#Making_your_own [2015-02-01]

Benzie R. (2014) The Star. *Ontario Threatens to scuttle Rouge National Urban Park over environmental concerns*. http://www.thestar.com/news/queenspark/2014/09/03/ontario_threatens_to_scuttle_rouge_national_urban_park_over_environmental_concerns.html# [2015-02-19]

Benzie R. (2015) The Star. *Province puts break on plans for country's first national urban park*. [Article] Available: <http://www.thestar.com/news/queenspark/2015/03/12/province-nixes-land-transfer-to-ottawa-for-rouge-park.html> [2015-07-24]

Canadian Press, The. (2015) *Toronto's Rouge Park may become Canada's first national urban park*. <http://www.naturvardsverket.se/Nerladdningssida/?fileType=pdf&pid=3915&traceFile=/Documents/publikationer/620-8161-6.pdf> [2015-01-28]

Editorial. (2015) *End the squabbling over Rouge urban park*. Editorial, The Star. <http://www.thestar.com/opinion/editorials/2015/07/16/end-the-squabbling-over-rouge-urban-park-editorial.html> [2015-07-23]

Environment. (2014) *National landscapes*. http://www.ymparisto.fi/en-US/Nature/Landscapes/National_landscapes [2015-03-23]

Eschner, Kat. (2015) *Rouge National Urban Park Stalled*. <http://torontoist.com/2015/08/rouge-national-urban-park-stalled/> [2015-08-23]

ETTELVA (2013) <http://ettelva.se/projekt/djurgardens-besökscentrum/> [2015-09-06]

Evergreen (2015) <http://www.evergreen.ca/> [2015-09-01]

Fagervik, T. (2007) Nu måste vi sätta ner foten. *Mitt i Östermalm*. [Electronic] Available: <http://arkiv.mitti.se:4711/2007/38/ostermalm/MIIO05A20070918IOV1.pdf> [2015-02-07]

Friluftsliv. (2012) *StorStockholms gröna kilar*. <http://www.friluftsliv.nu/Jarvakilen/allakilar.htm> [2015-06-01]

FRW, Friends of the Rouge Watershed. *Ponds and Wetlands*. <http://www.frw.ca/rouge.php?ID=43> [2015-02-19]

Förbundet för Ekoparken. (2015) www.ekoparken.org [2015-07-30]

Gardenvisit (2015) http://www.gardenvisit.com/garden/sudgelande_nature_park [2015-09-06]

Honderich H. (2015) The Star. *Harper announces expansion of Rouge National Urban Park*. <http://www.thestar.com/news/gta/2015/07/11/harper-announces-expansion-of-rouge-national-urban-park.html> [2015-07-23]

IUCN. (2014) *IUCN Protected Areas Categories System*. https://www.iucn.org/about/work/programmes/gpap_home/gpap_quality/gpap_pacategories/ [2015-03-10]

Länsstyrelsen i Stockholms län. *Nationalstadsparken*. <http://www.nationalstadsparken.se> [2014-01-21]

Ligaya, A. (2012) *Five things to know about Rouge National Urban Park*. <http://news.nationalpost.com/news/canada/five-things-to-know-about-rouge-national-urban-park> [2015-08-27]

Mangan E.U. *Yellowstone, the First National Park*. Library of Congress: American memory. <http://www.loc.gov/collections/national-parks-maps/articles-and-essays/yellowstone-the-first-national-park/> [2015-02-25]

McMamee K & Finkelstein M.W. (2015) National Parks of Canada. *The Canadian Encyclopedia*. Toronto: Historica Canada. [Electronic] Available: <http://www.thecanadianencyclopedia.ca/en/article/national-parks-of-canada/> [2015-07-28]

Merringer I. (2013) Canada's first national urban park. *Canadian Geographic*. [Electronic] Available: http://www.canadiangeographic.ca/magazine/ja13/rouge_national_urban_park.asp [2013-12-20]

Miljöbalken (1998:808) Stockholm. SFS 2015:232. https://www.riksdagen.se/sv/Dokument-Lagar/Lagar/Svenskforfattningssamling/Miljobalk-1998808_sfs-1998-808/ [2015-07-28]

Ministry of the Environment. (2014) *Nationalstadsparkerna bevarar stadens natur- och landskapsvärden*. http://www.ym.fi/sv-fi/Natur/Naturens_mangfald/Naturskyddsomraden/Nationalstadsparker [2015-03-23]

Ministry of Natural Resources. (2012) *Public Lands Act* (R.S.O. 1990, Chapter p.43). Government of Ontario: Queens Printer for Ontario. http://www.e-laws.gov.on.ca/html/statutes/english/elaws_statutes_90p43_e.htm#BK11 [2015-03-10]

Ministry of Municipal Affairs and Housing. (2010) *Oak Ridge Moraine, Conservation Plan*. <http://www.mah.gov.on.ca/Page1707.aspx> [2014-03-10]

Moola, F. (2012) A big cheque for Canada's first urban National Park. *David Suzuki Foundation – Solutions are in our nature*. May 25 [Blog] <http://www.davidsuzuki.org/blogs/panther-lounge/2012/05/a-big-cheque-for-canadas-first-urban-national-park/> [2015-07-28]

National Park Service. (2015) Gateway. <http://www.nps.gov/gate/index.htm> [2015-08-12]

Nationalstadsparksförordning. (2009) Västerås. (SFS 2009:55)

Naturvårdsverket. (2015a) *Allemansrätten*. <http://www.naturvardsverket.se/allemansratten> [2015-01-27]

Naturvårdsverket. (2015b) *Nationalparker*. <http://www.naturvardsverket.se/Var-natur/Skyddad-natur/Nationalparker/> [2013-11-10]

NE, Nationalencyklopedin. (2015) *Banff National Park. Ekoparken. National Park. Nationalstadspark. Natur. Park*. <http://www.ne.se> [2015-02-23]

Neimanis V.P. (2013) Crown land. *The Canadian Encyclopedia*. Toronto: Historica Canada. <http://www.thecanadianencyclopedia.ca/en/article/crown-land/> [2015-01-27]

Ontario Streams. (2009) *Current Projects*. <http://www.ontariostreams.on.ca/current.html> [2015-02-19]

Ontario. (2014) *Camping on Crown land. Crown land. Crown land management*. <https://www.ontario.ca/ontario-government> [2015-01-28]

Parks Canada. (2015) *Rouge National Park Initiative. Banff National Park - Activities. Fees. The System of National Parks of Canada. Introduction to National Parks System Plan. The State of Canada's Natural and Historic Places 2011*. <http://www.pc.gc.ca/eng/index.aspx> [2015-07-28]

Rickegård A. (2015) *Conference: Large Parks in Large Cities*. <http://www.humangeo.su.se/english/about-us/events/conference-large-parks-in-large-cities-1.230158> [2015-08-11]

Bill C-40. (2015) *An Act respecting the Rouge National Urban Park*. <http://www.parl.gc.ca/LegisInfo/BillDetails.aspx?Language=E&Mode=1&Bill=C40&Parl=41&Ses=2> [2015-08-01]

Rouge Valley Conservation Centre. (2012) *The James Pearse Jr House*. http://www.rvcc.ca/Pearse_House.html [2015-01-28]

Sjögård. (2014) *Stockholms Sjögård – Maritim kultur*. <http://www.sjogard.se/omrade/skeppskastellh.htm#kastell> [2015-02-02]

Staff, The Canadian Press. (2015) Prime Minister Harper announces expansion of Rouge National Urban Park. *Global News*. [Article] Available: <http://globalnews.ca/news/2105407/prime-minister-harper-announces-expansion-of-rouge-national-urban-park/> [2015-07-23]

Statens fastighetsverk. *Koppartälten i Hagaparken*. <http://www.sfv.se/sv/fastigheter/sverige/stockholms-lan-ab/ovriga/koppartalten-i-hagaparken/> [2015-02-03]

Stockholms stad. (2013) *Albano*. <http://bygg.stockholm.se/Alla-projekt/Albano/> [2015-02-01]

Sveriges Domstolar. (2011) *Högsta förvaltningsrättens årsbok HFD 2011 ref. 4. Rättsfall från Regeringsrätten*. Målnummer: 3663-10. Rättsnätet Notisum AB. <https://www.notisum.se/rnp/domar/rr/RR011004.htm> [2015-07-28]

Sveriges Kungahuset. <http://www.kungahuset.se> [2015-03-22]

Trzyna T. (2014a) *Urban Protected areas: Important for Urban People, Important for Nature Conservation Globally*. <http://www.thenatureofcities.com/2014/10/08/urban-protected-areas-important-for-urban-people-important-for-nature-conservation-globally/> [2015-03-22]

Rouge Park. (2015) <http://www.rougepark.com> [2015-07-28]

Unesco, United Nations Educational, Scientific and Cultural Organization. (2015) *Yellowstone National Park. Cultural landscapes*. <http://whc.unesco.org/> [2015-03-22]

UPA, Urban Protected Areas Network. (2014) *Welcome to UPA Network*. <http://english.upa-network.org> [2014-10-15]

WWF. (2015). *Large Parks in Large Cities*. <http://www.largeparks.se/index.htm> [2015-08-11]

WWF. (2012) *Stockholm National City Park*. http://wwf.panda.org/what_we_do/footprint/cities/urban_solutions/themes/nature/?204459/Stockholm-National-City-Park [2015-02-27]