

ACCEPTED MANUSCRIPT

Density dependence of ion cyclotron emission from deuterium plasmas in the Large Helical Device

To cite this article before publication: Bernard C G Reman *et al* 2021 *Nucl. Fusion* in press <https://doi.org/10.1088/1741-4326/abf661>

Manuscript version: Accepted Manuscript

Accepted Manuscript is “the version of the article accepted for publication including all changes made as a result of the peer review process, and which may also include the addition to the article by IOP Publishing of a header, an article ID, a cover sheet and/or an ‘Accepted Manuscript’ watermark, but excluding any other editing, typesetting or other changes made by IOP Publishing and/or its licensors”

This Accepted Manuscript is © 2021 The Author(s). Published by IOP Publishing Ltd..

During the embargo period (the 12 month period from the publication of the Version of Record of this article), the Accepted Manuscript is fully protected by copyright and cannot be reused or reposted elsewhere.

As the Version of Record of this article is going to be / has been published on a subscription basis, this Accepted Manuscript is available for reuse under a CC BY-NC-ND 3.0 licence after the 12 month embargo period.

After the embargo period, everyone is permitted to use copy and redistribute this article for non-commercial purposes only, provided that they adhere to all the terms of the licence <https://creativecommons.org/licenses/by-nc-nd/3.0>

Although reasonable endeavours have been taken to obtain all necessary permissions from third parties to include their copyrighted content within this article, their full citation and copyright line may not be present in this Accepted Manuscript version. Before using any content from this article, please refer to the Version of Record on IOPscience once published for full citation and copyright details, as permissions will likely be required. All third party content is fully copyright protected, unless specifically stated otherwise in the figure caption in the Version of Record.

View the [article online](#) for updates and enhancements.

1
2
3
4
5
6
7
8
9
10
11
12
13
14
15
16
17
18
19
20
21
22
23
24
25
26
27
28
29
30
31
32
33
34
35
36
37
38
39
40
41
42
43
44
45
46
47
48
49
50
51
52
53
54
55
56
57
58
59
60

Density dependence of ion cyclotron emission from deuterium plasmas in the Large Helical Device

B. C. G. Reman^{*1}, R. O. Dendy^{2,1}, T. Akiyama^{†3}, S. C.
Chapman¹, J. W. S. Cook^{2,1}, H. Igami³, S. Inagaki⁴, K. Saito³,
R. Seki³, M.H. Kim⁵, S.G. Thatipamula⁵, and G. S. Yun⁵

¹Centre for Fusion, Space and Astrophysics, Department of
Physics, Warwick University, Coventry CV4 7AL, UK

²CCFE, Culham Science Centre, Abingdon, Oxfordshire OX14
3DB, UK

³National Institute for Fusion Science, Toki, Gifu 509-5292,
Japan

⁴Research Institute for Applied Mechanics, Kyushu University,
Kasuga 816-8580, Japan

⁵Department of Physics, Pohang University of Science and
Technology, Pohang 37673, Korea

Abstract

Ion cyclotron emission (ICE) driven by perpendicular neutral beam-injected (NBI) deuterons, together with the distinctive ICE driven by tangential NBI, have been observed from heliotron-stellarator plasmas in the Large Helical Device (LHD). Radio frequency radiation in the lower hybrid range has also been observed [1], with frequency dependent on plasma density. Here we focus on recent measurements of ICE from deuterium plasmas in LHD, which show substantial variation in spectral character, between otherwise similar plasmas that have different local density in the emitting region. Here we analyse this variation by means of first principles simulations, carried out using a particle-in-cell (PIC) kinetic approach. We show, first, that this ICE is driven by perpendicular NBI deuterons, freshly ionised near their injection point in the outer midplane edge of LHD. We find that these NBI deuterons undergo collective sub-Alfvénic relaxation, which we follow deep into the nonlinear phase of the magnetoacoustic cyclotron instability. The frequency and wavenumber dependence of the saturated amplitudes of the excited fields determine our simulated ICE spectra, and these spectra are obtained for different local densities corresponding to the different LHD ICE-emitting plasmas. The variation with density of the spectral character of the simulated ICE corresponds well with that of the observed ICE from LHD. These results from heliotron-stellarator plasmas complement recent studies of density-dependent ICE from tokamak plasmas in KSTAR [2, 3], where the spectra vary on sub-microsecond timescales after an ELM crash. Taken together, these results confirm the strongly spatially lo-

*Now at Laboratoire Plasma et Conversion d'Énergie, Université Toulouse III Paul-Sabatier, France

†Now at General Atomics, P.O. Box 85608, San Diego, CA 92186, USA

1 INTRODUCTION

calised character of ICE physics, and reinforce the potential of ICE as a diagnostic of energetic ion populations and of the ambient plasma.

1 Introduction

Ion cyclotron emission (ICE) is widely observed from magnetically confined fusion (MCF) plasmas [4]. In addition to historical observations from deuterium-tritium plasmas in JET [5, 6] and TFTR [7], since 2017 ICE has been reported and analysed from the KSTAR [8, 9], DIII-D [10], ASDEX-Upgrade [11, 12, 13], TUMAN-3M [14] and EAST [15] tokamaks, and the LHD heliotron-stellarator [16, 17, 18]. ICE spectra typically comprise a succession of narrow, strongly suprathermal, peaks at sequential cyclotron harmonics of an energetic ion species. These species include fusion-born ions [5], neutral beam injected (NBI) ions [19], and ions energised by ion cyclotron resonant heating (ICRH) [20]. The emitting region is identified by matching spectral peak frequencies to local magnetic field strength. While in most cases it corresponds to the outer midplane edge plasma, ICE from the plasma core has recently been reported from the TUMAN-3M [14], ASDEX-Upgrade [12] and DIII-D [21] tokamaks. ICE has also been observed in NSTX and NSTX-U where it was found to be spatially colocated with internal transport barriers [22]. It is clear that the plasma physics process responsible for ICE is the magnetoacoustic cyclotron instability (MCI) [23]. This excites waves on the fast Alfvén-cyclotron harmonic branch, by drawing on the free energy of fast ions whose distribution in velocity-space incorporates a population inversion. The linkage between ICE and the MCI was established by early analytical studies [24, 25, 26, 27], and reinforced in the past decade by first

1 INTRODUCTION

principles computational studies using the particle-in-cell (PIC) approach [28, 29, 30, 31, 20, 3, 8, 9]. In outline, the MCI involves the excitation, through wave-particle cyclotron resonance, of quasi-perpendicular propagating waves on the fast Alfvén-cyclotron harmonic branches. For these waves, the perpendicular phase velocity $\omega/k_{\perp} \simeq V_A$, with V_A the Alfvén speed, implying that energetic ions with $v_{\perp} \simeq V_A$ will dominate any wave-particle resonant instability drive. Such drive is, of course, only possible at spatial locations where the energetic ion velocity-space distribution near $v_{\perp} \simeq V_A$ exhibits a population inversion, that is, $\partial f/\partial v_{\perp} > 0$ locally. This intuitively attractive physics was identified in the pioneering formulation of the MCI by Belikov and Kolesnichenko [23] and in subsequent analytical studies [24, 25, 26, 27]. It also emerges naturally from PIC-based studies of the relaxation of energetic ion distributions in majority thermal plasmas [28, 29, 30, 31, 20, 3, 8, 9]. In these, the collective instability, and indeed the normal modes themselves, are not prior assumptions; instead they emerge from the summation, over tens of millions of macroparticles, of self-consistent gyro-resolved kinetics and field evolution.

The notion that the strongest drive comes from $v_{\perp} \approx V_A$ originates in the mathematical analysis of the linear magnetoacoustic cyclotron instability (MCI). Specifically the kinetic dielectric tensor elements are rich in Bessel functions whose arguments $k_{\perp}v_{\perp}/\Omega$, see for example Eqs. (11) to (13) of Ref. [26], become $k_{\perp}v_{\perp,0}/\Omega$ for the driving energetic ion population, with Ω and $v_{\perp,0}$ its cyclotron frequency and speed respectively.

Since Ω also approximates to $k_{\perp}V_A$ for the fast Alfvén wave at its fundamental cyclotron resonance, the Bessel function argument approximates to $v_{\perp,0}/V_A$. In addition, since the most significant contributions (involving sign

1 INTRODUCTION

reversals, etc.) from the Bessel functions and their derivatives concentrate around where their argument equals unity, linear theory implies in broad terms that the dominant contribution to driving the MCI comes from energetic ions that have v_{\perp} close to V_A , irrespective of their v_{\parallel} . This line of reasoning, first developed by Belikov and Kolesnichenko [23] in the 1970s, also works for n th cyclotron harmonics and corresponding n th order Bessel functions and derivatives, hence the broadly comparable linear growth rates calculated across a range of low cyclotron harmonics shown in e.g. Fig. 3 of Ref. [26]. The central role of Bessel functions in linear MCI theory carries over into the sub-Alfvénic regime, see for example Eqs. (9, 10 and 16) of Ref. [32]. The analytical theory of the MCI, which contributes to explaining many aspects of ICE observations, has recently undergone a renaissance, see for example Refs. [33, 34]. The supposition, derived from linear MCI theory, that ICE observations at proton cyclotron harmonics in KSTAR deuterium plasma is mainly driven by energetic ions with $v_{\perp} \sim V_A$ turned out to have predictive power, see Ref. [3].

The NBI ions driving ICE are not necessarily super-Alfvénic, even marginally. An early example of sub-Alfvénic ICE arose in TFTR DT supershots [35]. In the LHD cases considered here, $v_{\perp,0} = v_{NBI}$ is less than V_A by factors of around two, with v_{NBI} the speed of the NBI ions. This deeply sub-Alfvénic ICE regime is underexplored in terms of published experimental data. Here we report three instances from LHD, which we examine using first principles studies of the nonlinear regime of the MCI, using PIC-type approaches. In addition, the path taken here differs from that of Ref. [18] for which both the density and magnetic field were changed in order to vary v_{NBI}/V_A , whereas only the density was changed here. For example, if one adjusts the value of

1 INTRODUCTION

2
3
4 v_{NBI}/V_A by changing the injection energy of the fast ions (hence the value
5 of v_{NBI}), in principle the bulk plasma parameters could remain invariant.
6
7 Whereas if one adjusts the value of v_{NBI}/V_A by changing the plasma density
8 (hence the value of V_A), this results also in a change of the value of key bulk
9 plasma ratios such as plasma frequency to cyclotron frequency, and in the
10 value of the lower hybrid cutoff. These are, of course, important for fast
11 wave physics in plasmas.
12
13

14
15
16
17
18 PIC code algorithms [36] solve the Maxwell-Lorentz system of equations,
19 typically for tens or hundreds of millions of interacting charged macropar-
20 ticles - energetic ions, thermal ions, and electrons - together with the self-
21 consistent electric and magnetic fields. Collective instabilities thus emerge
22 at the level of particle kinetics and field dynamics. The PIC approach can
23 retain full gyro-orbit resolution, and is thus particularly suitable for phe-
24 nomena that incorporate gyroresonance, such as the MCI. In PIC studies
25 for ICE interpretation, a minority energetic ion population is initialised with
26 a distinct, physically motivated, velocity-space inversion. This population
27 then relaxes under the Maxwell-Lorentz system, while coupled to the ther-
28 mal ions and electrons, and interacting with, and generating, self-consistent
29 fields. Typically, the frequency and wavenumber dependence of the sat-
30 urated amplitudes of the MCI-excited fields determine the simulated ICE
31 spectra, which are then compared to the observed ICE spectra. Our PIC
32 computational approach, using the hybrid-PIC code [29], is the same as used
33 in Ref. [18], to which we refer for further detail.
34
35
36
37
38
39
40
41
42
43
44
45
46
47
48
49

50 The foregoing approach was recently applied to observations of ICE from
51 hydrogen plasmas in LHD, driven by NBI protons injected perpendicular to
52 the confining magnetic field [18]. A focus of Ref. [18] is the dependence of
53
54
55
56
57
58
59
60

2 SUB-ALFVÉNIC ICE

observed ICE properties on whether the NBI protons are super-Alfvénic or sub-Alfvénic in the emitting region of the plasma; that is, whether v_{NBI}/V_A is larger or smaller than unity, where v_{NBI} is the speed of the NBI ions and V_A the local Alfvén speed. The present computational study addresses measurements of ICE from significantly sub-Alfvénic populations of energetic NBI ions, under conditions where the local density differs significantly between LHD plasmas. At fixed NBI energy and local field strength, the value of V_A is governed by the value of the density. In recent PIC studies of ICE from the KSTAR tokamak, ICE chirping on sub-microsecond timescales during the ELM crash was interpreted [3] in terms of fast density dependence arising from filament motion. Understanding the density dependence of ICE phenomenology is thus topical, both experimentally and in relation to theory and interpretation. In particular, it will assist the exploitation of ICE measurements to infer the key features of the velocity-space distribution of energetic ion populations in MCF plasmas.

2 Sub-Alfvénic ICE

Ring-beam distributions in velocity-space, as adopted in the present paper, are appropriate for representing freshly ionised populations of NBI ions, and were used in initial studies of the excitation of electrostatic modes to interpret probe measurements of ICE in TFTR plasmas with deuterium and tritium NBI in Ref. [27]. This electrostatic instability (as distinct from the fully electromagnetic treatment now prevalent, including in the present paper) did not rely on the fast Alfvén wave, and could be driven by significantly sub-Alfvénic fast ions, given a very narrow distribution of speeds parallel to

2 SUB-ALFVÉNIC ICE

the magnetic field. Computed growth rates for tritium (T) harmonics degenerate with background D were relatively lower, providing a link with the observed reduced intensity of ICE spectral peaks at the third and sixth T harmonics in some TFTR experiments, see Fig. 2 of Ref. [27]. Subsequently in TFTR, ICE was observed at cyclotron harmonics of the fusion products (^3He in DD supershots, and both ^4He and ^3He in T and in DT supershots) and of the sub-Alfvénic NBI-injected D and T. As with ICE in JET, the emission originated from the outer midplane edge plasma, but there were significant differences with respect to JET, particularly in the time evolution of the TFTR ICE signals. Typically, during the first 50 to 200 ms following the NBI trigger, cyclotron frequencies of the fusion products dominated the measured ICE spectrum, but then died out. They were replaced by ICE spectral peaks at multiple cyclotron harmonics of the injected D and T, until the NBI injectors were turned off. In subsequent TFTR experiments, Helium was puffed [35], forcing the plasmas to transit from typical supershots to pure L-modes. This changed the electron critical density and hence the local value of the ratio $v_\alpha/V_A \lesssim 1$, where v_α is the alpha-particle birth velocity and V_A is the local Alfvén speed in the ICE-emitting region at the plasma edge. The transient nature of ICE in TFTR supershots could be explained by the fact that the alpha-particle fusion products were sub-Alfvénic in the edge plasma. A plasma shifting from supershot to L-mode leads to early alpha-particle-driven ICE generation lasting for $\approx 200\text{ms}$ which then soon extinguishes, typical of the supershot phase, see Fig. 7 of Ref. [37]. The linear MCI treatment [27, 32, 7] distinguishing the sub-Alfvénic behaviour of TFTR from super-Alfvénic regimes typical of JET lead to higher growth rates for the former compared to the latter. This phenomenology follows

2 SUB-ALFVÉNIC ICE

from orbits and velocity-space considerations.

In the observations from DIII-D (Ref. [10]) and ASDEX-Upgrade (Refs. [11, 12, 13]) the NBI ions are also sub-Alfvénic, but the observational focus is on core ICE. For core ICE, the MCI physics is more complex and less certain: partly because fusion-born ions may additionally contribute to the drive; and partly because there are no core ICE counterparts to the very high-resolution measurements of plasma conditions for edge ICE, as shown for LHD in e.g. Fig. 3 of the present paper. The distinctive ICE measurements from NSTX and NSTX-U [22] appear to be driven, near transport barriers, by ions that are locally mildly super-Alfvénic. ICE from the core plasma in the small (major radius 0.557m, minor radius 0.256m) TUMAN-3M tokamak was observed in association with sub-Alfvénic NBI using a mixture of hydrogen and deuterium using magnetic probes [14].

The density-dependence of ICE spectra driven by substantially sub-Alfvénic NBI ions has not previously been explored, and especially not in otherwise similar plasmas, as here. Reference [18] addresses two cases of ICE, on either side of the boundary between sub-Alfvénic and super-Alfvénic in LHD. References [3] and [8] for KSTAR include density-dependence, but this is continuously and rapidly varying on microsecond timescales in the ELM crash, which is a very different context from the quasi-stationary conditions in the present paper. Furthermore the driving ions (3 MeV fusion-born protons) in Refs. [3, 8] are strongly super-Alfvénic with v_{\perp} close to V_A . The NBI deuterons driving the ICE in KSTAR, Ref. [9], are mildly sub-Alfvénic. As noted in the caption to Fig. 5 there, the action of the MCI is concentrated in (ω, k) space in the fairly narrow wedge between v_{NBI} and V_A . Among other things, this motivates the drive to "open the wedge" in the present paper;

3 ICE FROM LHD DEUTERIUM PLASMAS: DIAGNOSTIC CONTEXT

as noted in the main text and captions, we go down to $v_{NBI}/V_A = 0.36$ in LHD plasma 138439.

3 ICE from LHD deuterium plasmas: diagnostic context

In the LHD heliotron-stellarator, the ICE driven by perpendicular NBI deuterium, and the distinctive ICE driven by tangential NBI, have previously been observed using loop antennas [1]. Moreover, radiofrequency emission has been observed in the lower hybrid range, with frequency dependent on plasma density. Here we address recent measurements of radio-frequency emission at multiple deuteron cyclotron harmonics from deuterium plasmas in LHD, which show substantial variation in spectral character, between otherwise similar plasmas that have different local density in the emitting region. These measurements are obtained with the dipole antenna described below. We show that this ICE is driven by perpendicular NBI deuterons, freshly ionised near their injection point in the outer midplane edge of LHD. These NBI deuterons undergo collective sub-Alfvénic relaxation, which we follow deep into the nonlinear phase of the magnetoacoustic cyclotron instability. The variation with density of the spectral character of the simulated ICE corresponds well with that of the observed ICE from LHD. These results from heliotron-stellarator plasmas complement recent studies of density-dependent ICE from tokamak plasmas in KSTAR [2, 3], where the spectra vary on sub-microsecond timescales after an ELM crash. Taken together, these results confirm the strongly spatially localised character of ICE physics, and reinforce the potential of ICE as a diagnostic of energetic

4 OBSERVED DENSITY DEPENDENCE OF NBI-DRIVEN ICE FROM LHD DEUTERIUM PLASMAS

ion populations and of the ambient plasma.

On LHD, the acquisition system of the ICE measured at a dipole antenna located in the 10-O port inside the vacuum vessel was developed in partnership with KSTAR [38, 39, 40, 41]. A fast digitizer performs direct sampling of the radiofrequency measurements at a frequency of 1.25GSa/s. The time evolution of the RF spectral intensity is determined from this signal using a 14-channel filter bank spectrometer in the range of 70MHz to 2800 MHz, with intermediate spectral resolution and with μs time resolution; for a duration spanning the whole plasma discharge [40]. This dipole antenna measuring the ICE is located close to NBI #5 and toroidally opposite to NBI #4, see Fig. 4.

4 Observed density dependence of NBI-driven ICE from LHD deuterium plasmas

During perpendicular deuterium NBI experiments in LHD, it was observed that the spectral character of the ICE changes significantly between plasmas whose parameters in the emitting edge region differ only in their electron density. The left panel of figure 1 shows that ICE at frequencies 30MHz and 60MHz was observed only when NBI #5 was operated without NBI #4 in LHD plasmas 138439 and 138458. Conversely, in these plasmas, ICE was not observed when only NBI #4 was operated without NBI #5. Moreover, as shown in the right panel of Fig. 1, ICE was continuously observed during continuous operation of NBI #5 in LHD plasma 138433. These results support the interpretation below that ICE measured at the dipole antenna is driven locally by perpendicular-NB injected deuterons from NBI #5. Figure

4 OBSERVED DENSITY DEPENDENCE OF NBI-DRIVEN ICE FROM LHD DEUTERIUM PLASMAS

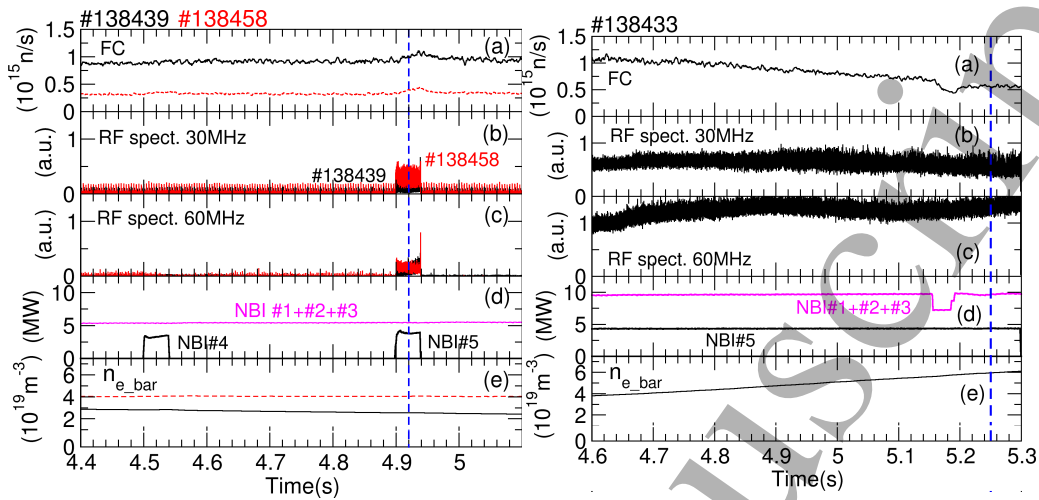


Figure 1: Measured time traces for: (left panel) LHD plasmas 138439 (black traces) and 138458 (red), to which NBI #4 and NBI #5 were applied in separate brief bursts; (right panel) LHD plasma 138433 during which NBI #5 was operated continuously. From top to bottom, the five vertically arranged panels are: (a) neutron flux; emission intensity detected by RF spectrometer for frequency channels at (b) 30MHz and (c) 60 MHz; (d) NBI port through power; (e) line averaged density.

2 shows the ICE power spectra observed at the time indicated by the vertical blue dashed line in Fig. 1 for LHD plasmas 138439, 138458 and 138433 which differ primarily in their edge plasma densities. The profiles of the electron density, electron temperature, and ion temperature are shown in Fig. 3. These were taken at instants which are very close to the times at which the ICE spectra, shown in Fig. 2, were observed. Figure 2 shows that, as the electron density increases, the amplitudes of the ICE spectral peaks typically increase, in the frequency range of interest to us below 120 MHz; the number of harmonics increases; and the width of spectral peaks increases. If we identify the 12.05MHz spacing between the ICE spectral peaks in Fig. 2 with the local deuterium cyclotron frequency, this suggests that the local background magnetic field value is 1.581T and hence the emission location is at $R = 4.651\text{m}$, as illustrated in Fig. 5. Table 1 summarises the plasma

4 OBSERVED DENSITY DEPENDENCE OF NBI-DRIVEN ICE FROM LHD DEUTERIUM PLASMAS

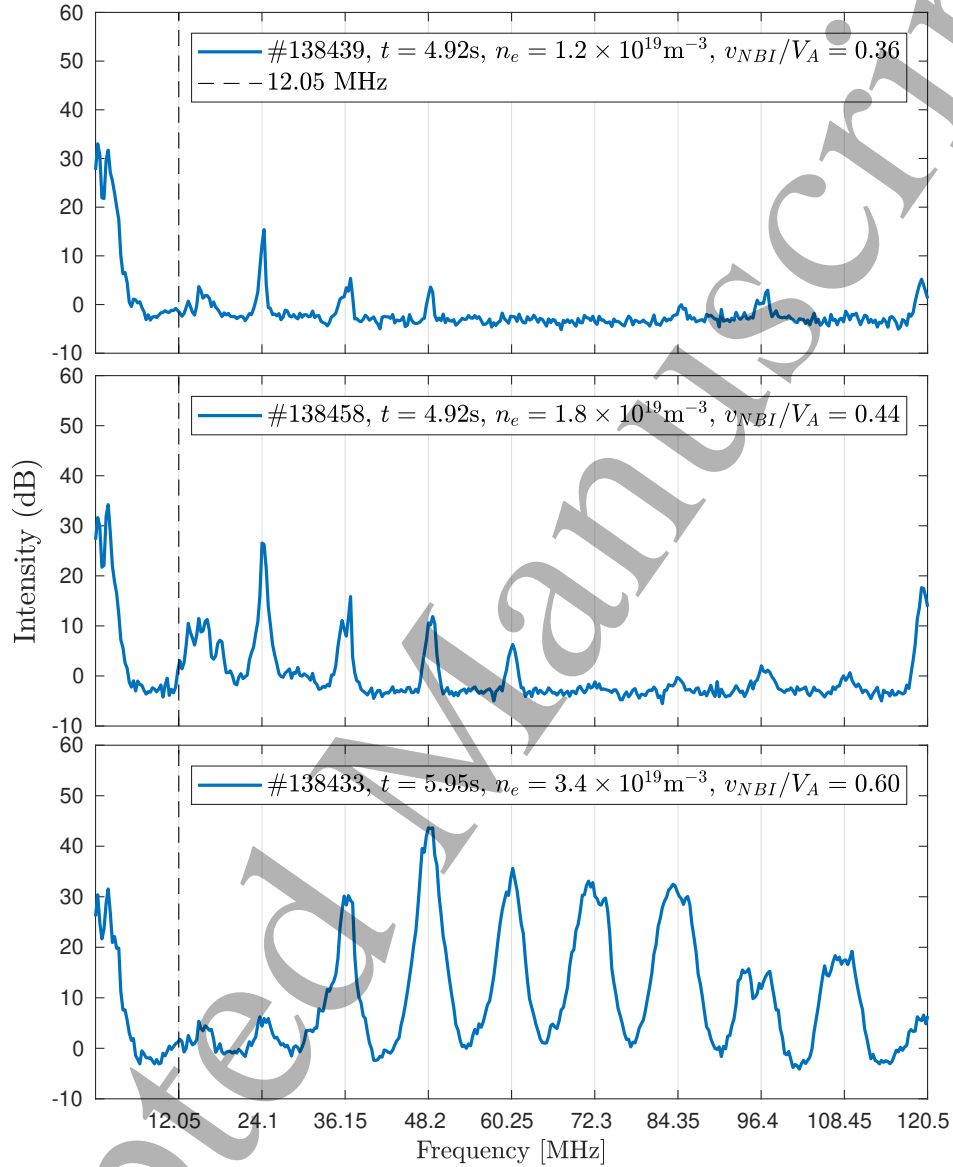


Figure 2: Observed ICE power spectra for three LHD deuterium plasmas at times indicated by the blue vertical dashed lines in Fig. 1 during operations of NBI #1-3, 5 for LHD plasmas 138439, 138458 and 138433 which differ primarily in their edge plasma densities. The peak-to-peak frequency separation Δf is 12.05MHz in all three cases. Identifying Δf with the local deuteron cyclotron frequency Ω_D implies a magnetic field strength $B = 1.581\text{T}$, which corresponds to an outer midplane plasma edge location in LHD.

4 OBSERVED DENSITY DEPENDENCE OF NBI-DRIVEN ICE FROM LHD
 DEUTERIUM PLASMAS

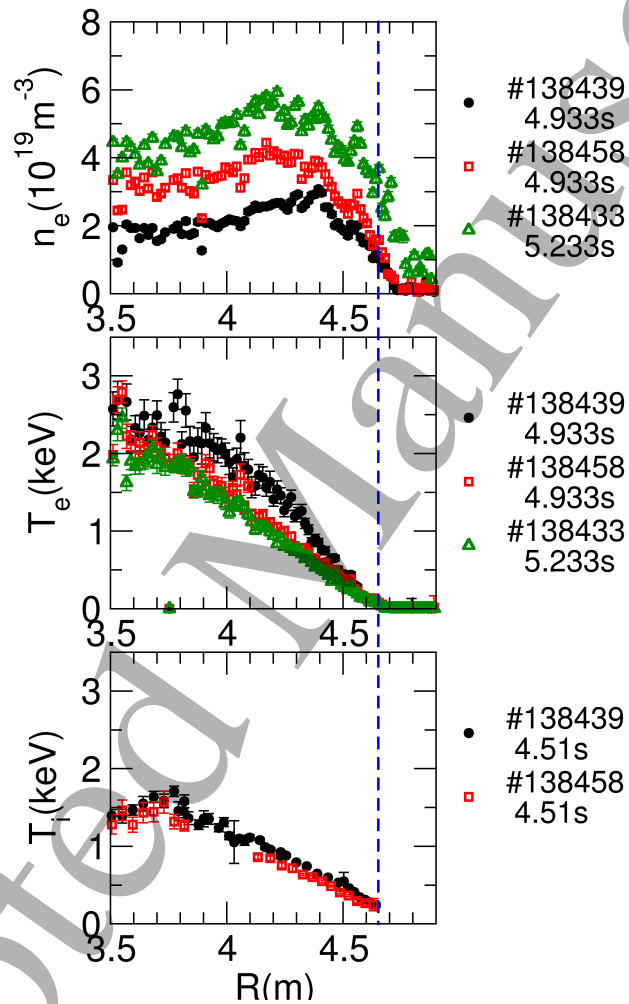


Figure 3: Measured radial profiles of the LHD plasmas. (Top) electron density, and (middle) electron temperature, obtained by Thomson scattering at the time of the ICE spectra displayed in Fig. 1; (bottom) ion temperature obtained by charge exchange spectroscopy during heating by NBI #4.

4 OBSERVED DENSITY DEPENDENCE OF NBI-DRIVEN ICE FROM LHD DEUTERIUM PLASMAS

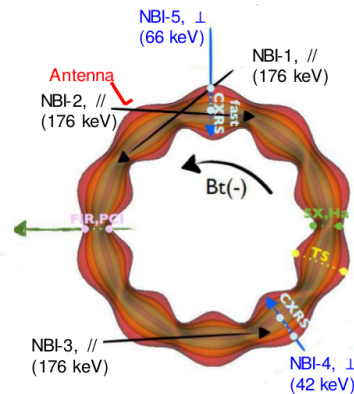


Figure 4: Schematic diagram of LHD plasma showing locations and directions of NBI beams.

parameters at the inferred emission location where the deuteron cyclotron frequency matches 12.05 MHz, with reference to Fig. 3, together with values for the velocity of freshly injected ions v_{NBI} , and the local Alfvén speed V_A . We note for future analysis that, since the Alfvén speed is given by

$$V_A = \frac{B_0}{\sqrt{\mu_0 n_e m_D}} \quad (1)$$

with n_e and m_D the electron density and the deuteron mass respectively, the key dimensionless ratio of the NBI deuteron speed to the Alfvén speed, v_{NBI}/V_A , also increases as n_e increases. We observe that in all three plasmas, the NBI deuterons are in the sub-Alfvénic regime. This regime was previously investigated in earlier ICE experiments carried out in TFTR, involving gas puffing [42, 35]. This changed the edge plasma density, transitioning the fusion-born alpha-particles from a sub-Alfvénic to a super-Alfvénic regime in that region. The consequences for the TFTR ICE spectrum are discussed in Figs. 7 to 9 of Ref. [35]. We note that the Alfvén speed definition Eq. 1 includes D only: the ratio $D/(D + H)$ remains constant and very close to unity during the plasmas studied. Our simulations incorporate the effect of

1
2
3
4
5
6
7
8
9
10
11
12
13
14
15
16
17
18
19
20
21
22
23
24
25
26
27
28
29
30
31
32
33
34
35
36
37
38
39
40
41
42
43
44
45
46
47
48
49
50
51
52
53
54
55
56
57
58
59
60

4 OBSERVED DENSITY DEPENDENCE OF NBI-DRIVEN ICE FROM LHD
DEUTERIUM PLASMAS

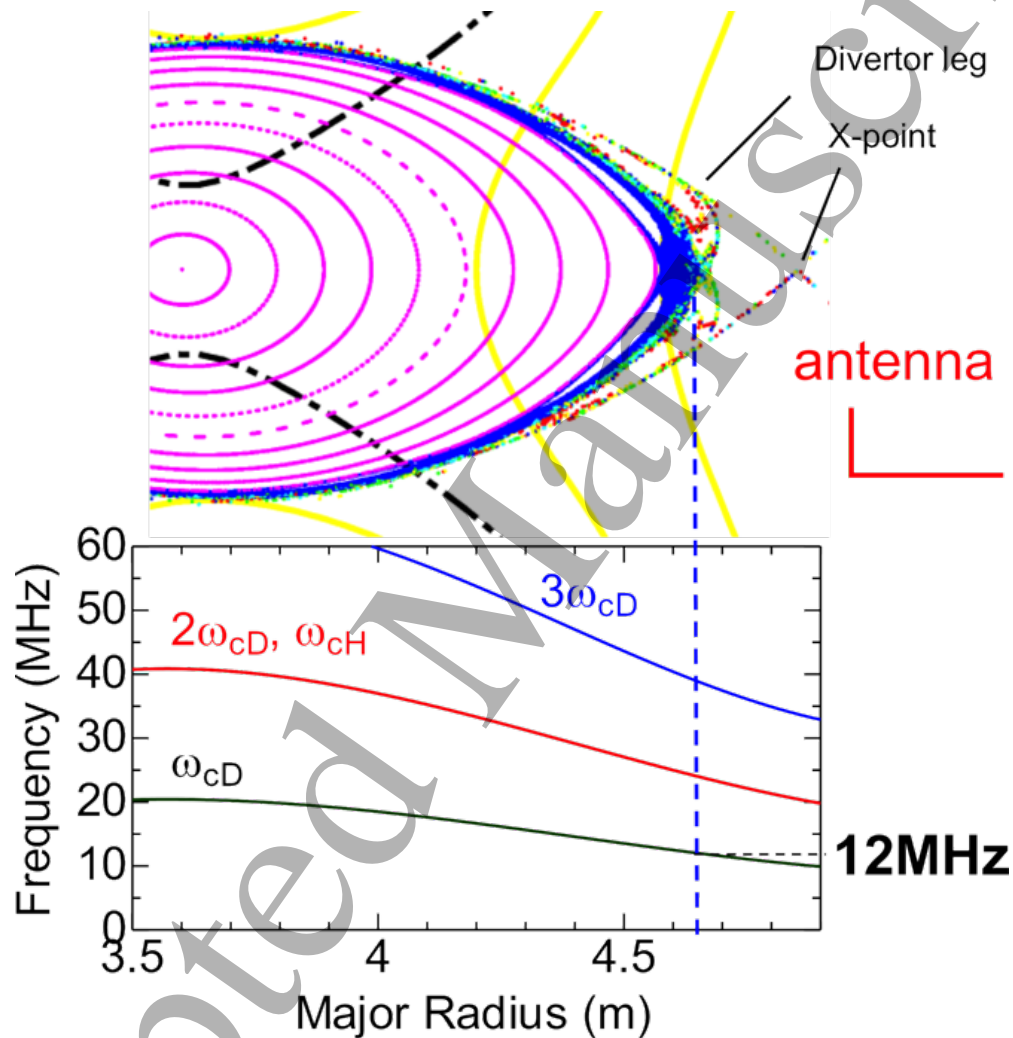


Figure 5: Identifying the approximate location of the region where ICE is generated during perpendicular deuterium NBI in LHD. We match the approximate frequency spacing between observed neighbouring ICE peaks, $\simeq 12$ MHz, to the spacing between successive local deuterium cyclotron harmonics. This is possible only at $R \simeq 4.65$ m.

5 FIRST PRINCIPLES SIMULATIONS OF ICE SPECTRA AND THEIR DENSITY DEPENDENCE

LHD	T_e	n_e	NBI #5b	v_{NBI}	V_A	v_{NBI}/V_A
plasma	(eV)	10^{19}m^{-3}	keV	10^6ms^{-1}	10^6ms^{-1}	
138439	70	1.2	66.7	2.53	7.04	0.36
138458	80	1.8	66.7	2.53	5.75	0.44
138433	50	3.4	68.7	2.57	4.18	0.61

Table 1: Edge plasma parameters and NBI deuteron energies, with corresponding values for v_{NBI}/V_A which are significantly sub-Alfvénic.

LHD	NBI#1	NBI#2	NBI#3	NBI#4a	NBI#4b	NBI#5a	NBI#5b
plasma	(keV),D	(keV),H	(keV),D	(keV),D	(keV),D	(keV),D	(keV),D
138439	172	-	174	30.5	45.2	-	66.7
138458	172	138	-	30.5	46.2	-	66.7
138433	172	163	174	35.4	51.1	-	68.7

Table 2: Table giving the different NBI energies, either H or D. The simulations use the deuterium energies of NBI #5b. Note from Fig. 4 that NBI #1, #2 and #3 are all directed parallel, whereas NBI #4 and #5 are perpendicular to the magnetic field.

both the thermal deuterons and the energetic deuterons NBI population as explained in the next section.

5 First principles simulations of ICE spectra and their density dependence

5.1 Basis of the computational approach

Our hybrid-PIC simulations, reported below, use the deuterium injection energies of NBI #5b given in Table 2 to define the initial perpendicular velocity of the energetic minority deuteron population. These deuterons are represented in velocity space as a gyro-resolved ring-beam distribution $\sim \delta(v_{\perp} - v_{NBI})$, as discussed further in Sec. 5.2, which coexists with a much

5 FIRST PRINCIPLES SIMULATIONS OF ICE SPECTRA AND THEIR DENSITY DEPENDENCE

more numerous gyro-resolved thermal deuteron population together with a charge-neutralising electron fluid. With this 1D3V code, the wavenumbers of spatial variations can only be oriented along the single axis (1D) of the spatial domain, the x -direction. It is nevertheless possible to fully represent ion gyrations, because the code is 3V. This is done by integrating (v_x, v_y) over time. Once initialised, this system subsequently relaxes under first principles self-consistent Maxwell-Lorentz dynamics. The majority thermal deuterons have $T_i = 280\text{eV}$, which is inferred from the LHD ion temperature profile shown in Fig. 3 in combination with the result of Fig 5; we use the associated thermal velocity $v_{Ti} = 1.64 \times 10^5 \text{ms}^{-1}$ to characterise their initially Maxwellian distribution. It follows that $v_{NBI}/v_{Ti} = 15.43$, which is also the ratio of ion Larmor radii $r_{L,NBI}/r_{Ti}$. We use 32798 particles per cell for the thermal background deuterons and 8192 particles per cell for the NBI deuterons. The 1.581T background magnetic field is perpendicular to the 1D spatial domain of our simulation, which consists of 4096 cells. The 1D spatial domain of the simulations is taken to correspond to the radial direction, such that the perpendicular background magnetic field is oriented in the toroidal direction. The wavevector k of spatial fluctuations propagates radially outwards if positive. The cell sizes are 0.0028m, 0.0022m and 0.0014m for LHD plasma 138439, 138458 and 138433 respectively, which correspond respectively to multiples of 1.31, 1.00 and 0.65 of the characteristic gyroradius r_{Ti} of the thermal deuterons. The different plasma densities give rise to different electron skin depths λ_e : 0.0015m, 0.0013m and 0.0009m, respectively. These need to be smaller than the cell sizes to be consistent with PIC-hybrid model assumptions [43, 44]. Chosen as above, the cell sizes keep the ratio of $\Delta x/\lambda_e$ constant at about 1.70 in all three cases. This

5 *FIRST PRINCIPLES SIMULATIONS OF ICE SPECTRA AND THEIR DENSITY*
 6 *DEPENDENCE*

7 approach thus captures cyclotron resonant phenomenology directly, at the
 8 level of particle-field interactions for individual ions moving on their resolved
 9 gyro-orbits. The hybrid-PIC model used here relies on collisionless ions and
 10 Coulomb collisions are not taken into account over the time scales studied
 11 (the deuteron gyroperiod $\tau_D=0.1\mu s$). In the appropriate limit, the code re-
 12 covers the cold magnetised plasma dispersion relation. To enable systematic
 13 comparison of computational outputs, we use the same relative beam den-
 14 sity $\xi \equiv n_{NBI}/n_e$ for all our simulations; as distinct from, say, a constant
 15 absolute beam density. Specifically, we set $\xi = 0.0005$ in all simulations.
 16 The extent to which the value of ξ may have varied between the three LHD
 17 plasmas was explored using the FIT3D code [45, 46]. This makes it possible
 18 to estimate - subject to several unavoidable uncertainties - the time-evolving
 19 number density of the NBI deuterons which originate from injector #5 in
 20 LHD, summing over all NBI ion energies from zero to 67 keV. The FIT3D
 21 calculations necessarily relate to a radial location just inside the last closed
 22 flux surface (LCFS), whereas the ICE measurements in this paper appear
 23 to originate just outside the LCFS. The estimated values of ξ do not vary
 24 greatly. We find that the highest value of ξ among the three plasmas is esti-
 25 mated to occur for LHD plasma #138439, which has the weakest observed
 26 ICE spectrum, see the top panel of Fig. 2. It is known that linear MCI
 27 drive is often a slowly monotonically increasing function of ξ [31, 18], other
 28 variables being equal. The reversal of this trend in the present case, where
 29 however density varies greatly between the three plasmas, suggests that the
 30 background density dependence effect we consider, which determines ICE
 31 spectral character in addition to ICE intensity, is dominant over any conse-
 32 quences of any variation in n_{NBI}/n_e .

5 FIRST PRINCIPLES SIMULATIONS OF ICE SPECTRA AND THEIR DENSITY DEPENDENCE

The ratios of the NBI deuteron speed v_{NBI} to the local Alfvén speed V_A are 0.36, 0.44 and 0.60 for LHD plasmas 138439, 138458 and 138433 respectively, see Table 1. The NBI deuterons are thus in a significantly sub-Alfvénic (and accordingly computationally resource-intensive) regime for all three plasmas; they have an even lower value of v_{NBI}/V_A than the sub-Alfvénic NBI protons in LHD hydrogen plasmas whose ICE was addressed in Ref. [18].

5.2 Simulated ICE spectra compared to observations

In our PIC-hybrid simulations, the energetic minority deuteron population is initialised with a ring-beam distribution in velocity space, of the form $f_{NBI}(v_{\perp}, v_{\parallel}) = 1/(2\pi v_{NBI}) \delta(v_{\parallel}) \delta(v_{\perp} - v_{NBI})$, where v_{NBI} the injection speed resulting from the NBI #5b beam energies given in Table 1. These NBI deuterons are initially distributed randomly and uniformly in gyroangle while the thermal deuterons are loaded by mean of a quiet start [47, 48], in both positions and velocities. The relaxation of this energetic ion population under the Maxwell-Lorentz system of equations gives rise to self-consistently excited electric and magnetic fields; see Refs. [28, 29, 3] for details of this approach. Fourier transformation of the excited fields yields spectral information that is compared to the LHD observations. We focus on the lower cyclotron harmonics, for which the distribution of energy between the ICE spectral peaks shown in Fig. 2 displays significant changes between the three LHD plasmas. Figure 6 shows the simulated power spectra, alongside the measured spectra extracted from Fig. 2. The red, green and blue traces correspond to LHD plasmas 138439, 138458 and 138433 respectively. In the middle and bottom panels of Fig. 6, these traces are obtained by taking the spatiotemporal fast Fourier transform of the values of δB_z out-

5 *FIRST PRINCIPLES SIMULATIONS OF ICE SPECTRA AND THEIR DENSITY*
 6 *DEPENDENCE*

7 put from the PIC-hybrid computations in the time interval between $t = \tau_D$
 8 and $t = 9\tau_D$ (where $\tau_D = 2\pi/\Omega_D$ is the deuteron gyroperiod), which is
 9 summed over wavenumbers up to $k = 40\Omega_D/V_A$. The agreement between
 10 observed and simulated ICE spectra appears good quantitatively. In both
 11 the top (experimental ICE) and middle (simulated spectra) panels in Fig.
 12 **6**, the number of cyclotron harmonic spectral peaks increases as v_{NBI}/V_A
 13 increases, as does their amplitude. These trends can be examined in greater
 14 detail for the three plasmas separately in Fig. **7**. Here our simulated power
 15 spectra are shown as dark traces, together with the measured ICE spec-
 16 tra which are plotted as coloured traces for comparison: red, LHD plasma
 17 138439; green, LHD plasma 138458; blue, LHD plasma 138433. The spectra
 18 are vertically offset in comparison with Fig. **6** such that the ordinate of the
 19 peak with largest amplitude is zero in each panel. In the left panel of Fig.
 20 **7**, for which $v_{NBI}/V_A = 0.36$, the strongest spectral peaks in the simulation
 21 are at relatively low deuteron cyclotron harmonics, second to fourth. In
 22 the middle panel, for which $v_{NBI}/V_A = 0.44$, the middle order harmonics
 23 (fourth and fifth) become more pronounced. In the right panel of Fig. **7**,
 24 for which $v_{NBI}/V_A = 0.60$, the amplitudes of the spectral peaks are sub-
 25 stantially larger, and the simulation captures the experimental spectrum in
 26 extending strongly across the middle order harmonics (fifth to seven). In
 27 all three plasmas of Fig. **7**, the strongest harmonic peaks in the experiment
 28 and in the simulations are the same: from left, second, second and fourth.
 29 The fundamental computational noise level in our simulations is addressed
 30 in Appendix **A**, where it is found to lie at about -145dB. The instrumental
 31 noise level in the ICE detection system on LHD imposes the noise floor that
 32 is visible in the top panel of Fig. **6**. The question of where the instrumental

5 FIRST PRINCIPLES SIMULATIONS OF ICE SPECTRA AND THEIR DENSITY DEPENDENCE

noise floor should lie in our simulated spectra cannot be answered *a priori*. However the bottom panel of Fig. 6 shows that the agreement between the observed and simulated ICE spectra is greatest if we conjecturally assign a value of -133dB to the instrumental noise floor when considering our simulated spectra. One possible source of difference with regard to the width of the measured and simulated power spectra is the time during which the time series is acquired. In the calculation, it corresponds to the duration of the simulation which is $10\tau_D$.

The spatiotemporal fast Fourier transforms of δB_z are plotted in Fig. 8. These show that the concentration of excited wave amplitude in (ω, k) space lies on horizontal bands at successive cyclotron harmonics, and that each of these bands is approximately centered on a line which satisfies $\omega/k = v_{NBI}$. This is represented by the dark line in each panel of Fig. 8, for which $(\omega/k)/V_A = v_{NBI}/V_A = 0.36, 0.44$ and 0.60 from top to bottom. The nearly horizontal structures are electromagnetic cyclotron harmonic waves supported by both the thermal deuterons (as a positive-energy wave) and the NBI deuterons (as a negative-energy wave). This is apparent from the linear analytical theory of the MCI: restricting attention to the strictly perpendicular case for mathematical clarity, let us consider for example the final three terms on the right-hand side of Eq. (67) of Ref. [24]. Importantly, the signs of the coefficients β_4 and β_5 in this equation, which are defined at Eqs. (51) and (52), depend on the specific distribution of the energetic ions in velocity-space. This leads on to the negative-energy character of the energetic ion support to the corresponding cyclotron harmonic waves, as anticipated by Belikov and Kolesnichenko [23]. The electromagnetic generalisation of the foregoing, for finite k_{\parallel} , is at Eq. (20) of Ref. [26]. The dark

5 *FIRST PRINCIPLES SIMULATIONS OF ICE SPECTRA AND THEIR DENSITY*
 6 *DEPENDENCE*

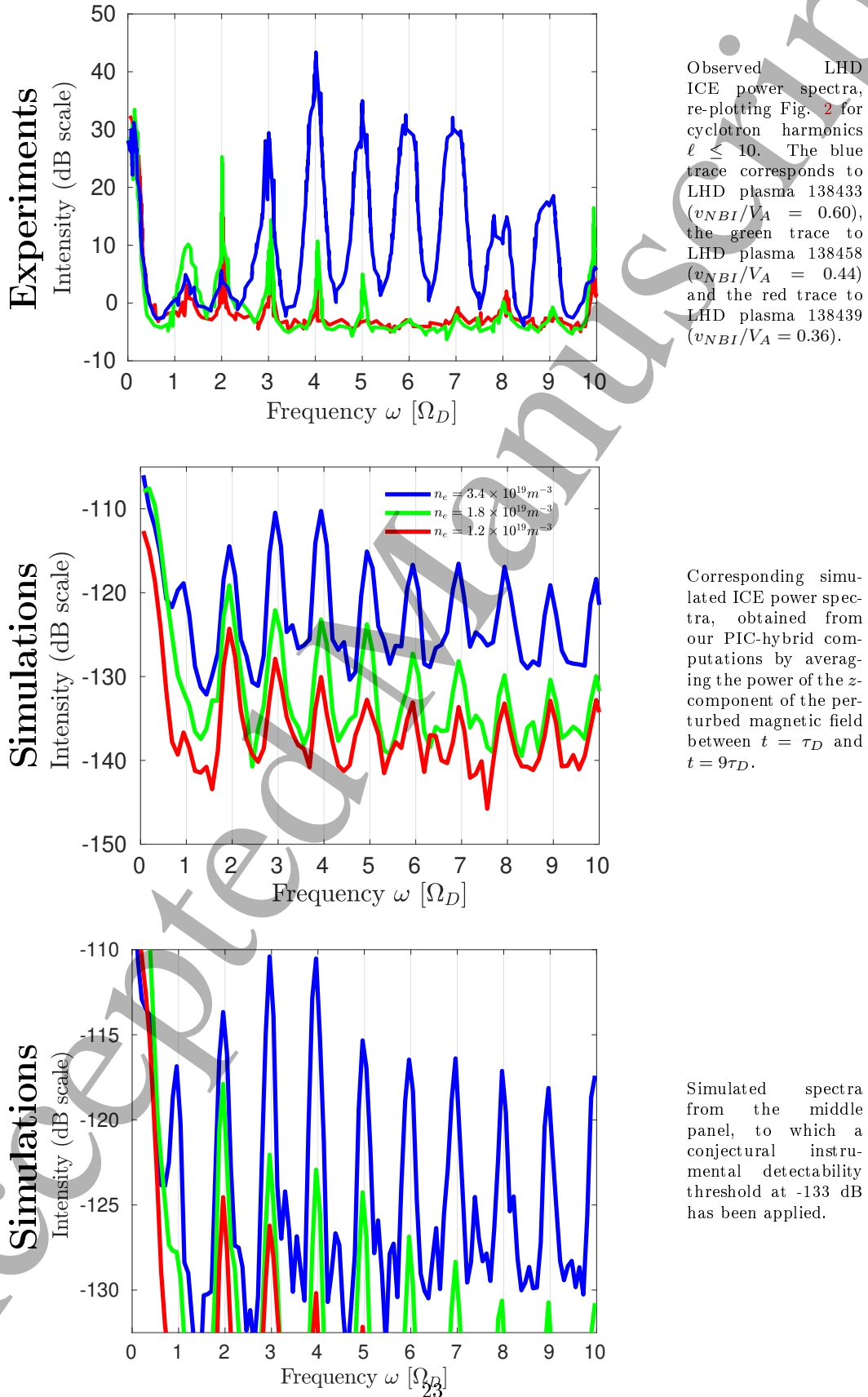


Figure 6: Experimental and simulated power spectra.

5 FIRST PRINCIPLES SIMULATIONS OF ICE SPECTRA AND THEIR DENSITY DEPENDENCE

line overplotted on the spatiotemporal Fourier transforms in Fig. 8, which delineates $\Omega_D/k = v_{NBI}$, can be recast as $k_{\perp}v_{NBI}/\Omega_D \simeq 1$. At $\omega = \Omega_D$, this represents the Bessel function argument which we mentioned earlier in the introduction; excitation is concentrated at values of the argument close to 1. The steepest yellow-red feature in Fig. 8 corresponds to the linear fast Alfvén dispersion relation $\omega = kV_A$ and incorporates significant noise energy. Figure 9 plots the time evolution of the change in the different components of particle and field energy density. It shows that, in these simulations, the NBI beam deuterons relax and saturate faster, releasing more energy to the excited fields and the bulk plasma, as the value of v_{NBI}/V_A increases towards unity.

5 *FIRST PRINCIPLES SIMULATIONS OF ICE SPECTRA AND THEIR DENSITY*
 6 *DEPENDENCE*

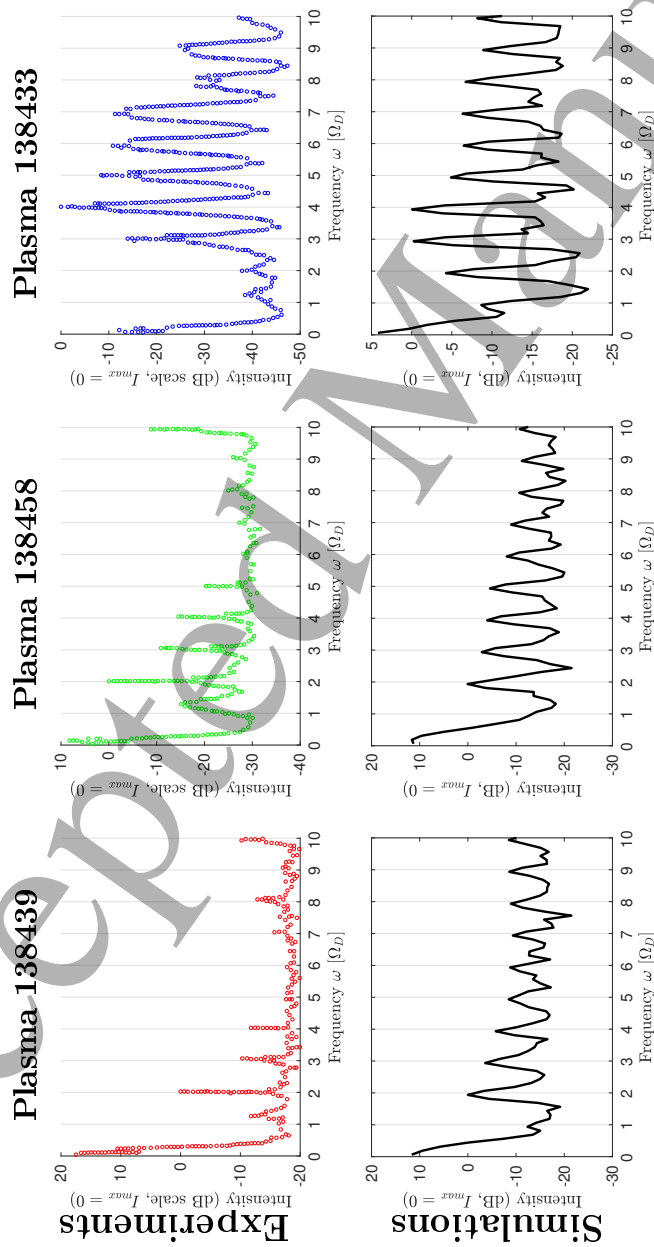


Figure 7: Red, green and blue circles: measured ICE power spectra from LHD plasmas 138439, 138458 at $t = 4.92\text{sec}$ and 138433 at $t = 5.25\text{sec}$. Dark traces: corresponding simulated power spectra of the z -component of the perturbed magnetic field, averaged between $t = \tau_D$ and $t = 9\tau_D$. The power spectra are vertically offset in comparison to Fig. 6 such that the cyclotron harmonic with largest amplitude, respectively 2, 2 and 4 for LHD plasmas 138439, 138458 and 138433, has zero ordinate.

5 *FIRST PRINCIPLES SIMULATIONS OF ICE SPECTRA AND THEIR DENSITY*
 6 *DEPENDENCE*

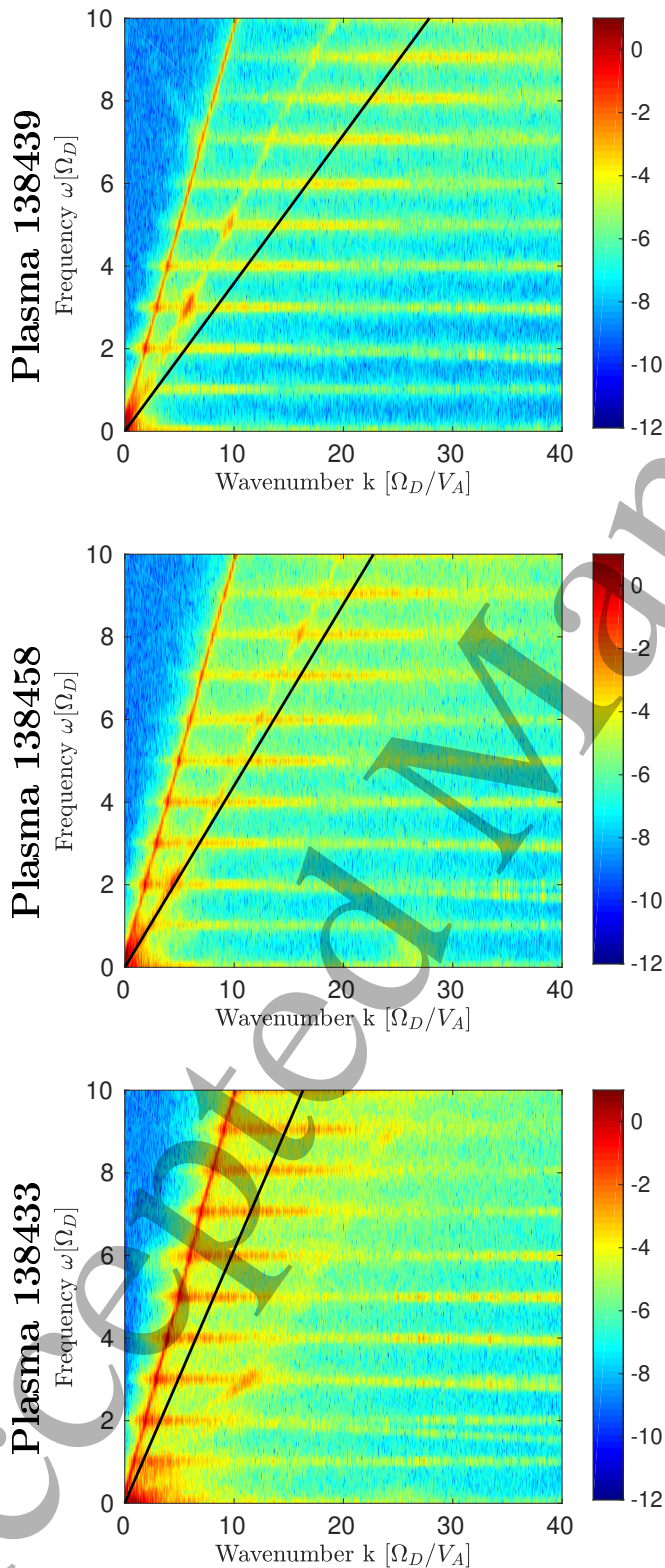


Figure 8: Spatio-temporal Fourier transform of the fluctuating part of the z -component of the magnetic field, calculated over the entire simulation and plotted on a \log_{10} scale for the three cases. The concentration of excited wave amplitude in (ω, k) space lies on horizontal bands at successive cyclotron harmonics, and each of these bands is approximately centered on a line which satisfies $\omega/k = v_{NBI}$. This is represented by the dark line in each panel, characterised by $(\omega/k)/V_A = v_{NBI}/V_A = 0.36, 0.44$ and 0.60 from top to bottom. The steepest yellow-red feature corresponds to the linear fast Alfvén dispersion relation $\omega = kV_A$ and incorporates significant noise energy.

5 *FIRST PRINCIPLES SIMULATIONS OF ICE SPECTRA AND THEIR DENSITY*
 6 *DEPENDENCE*

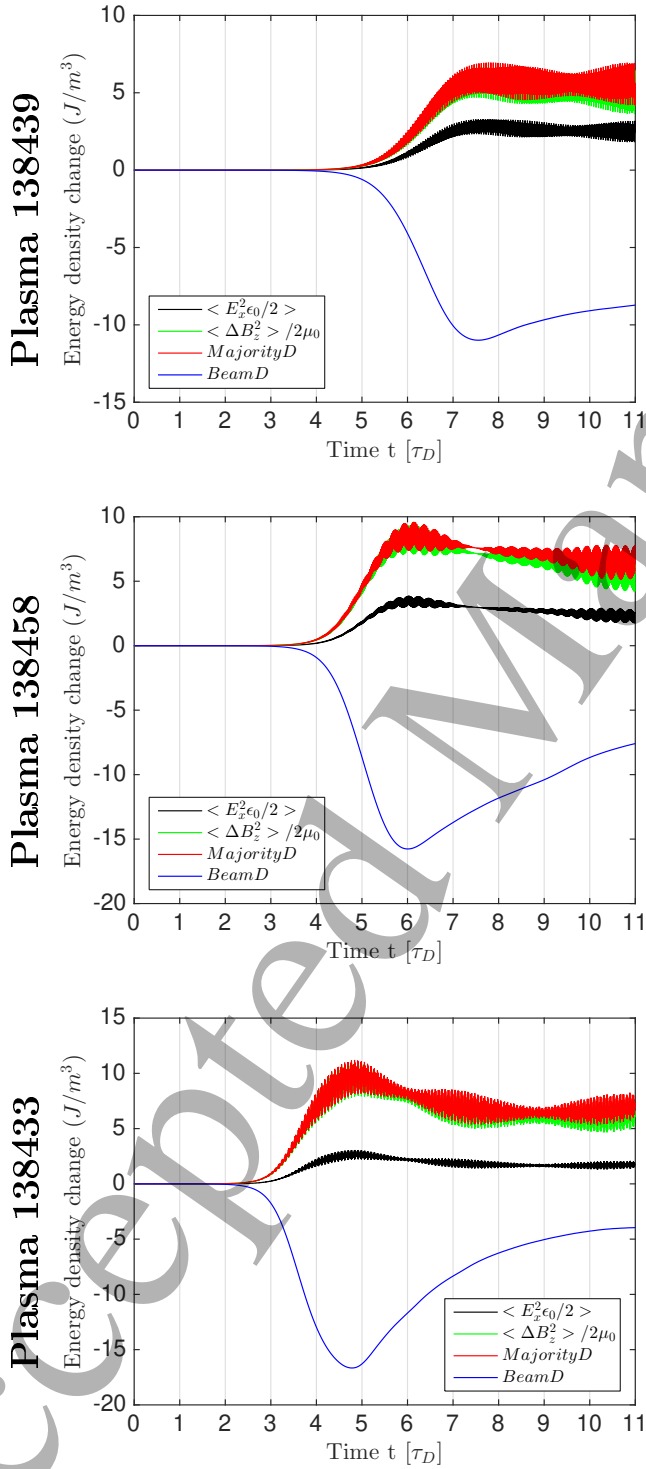


Figure 9: Time evolution of the change in the energy density of the different field and particle species: red, background deuterons; blue, NBI deuterons; green, z -component of the fluctuating part of the magnetic field; black, x -component of the electric field.

6 CONCLUSIONS

6 Conclusions

The computational approach adopted in this paper has involved solving the Maxwell-Lorentz equations for tens of millions of macroparticle ions with fully gyro-resolved orbits, together with fluid electrons, self-consistently with the electric and magnetic fields. This is carried out with the PIC code [36] used in Refs. [29, 31], using a local (slab geometry) description, with one spatial and three velocity-space coordinates (1D3V), and retaining all three vector components of \mathbf{E} and \mathbf{B} . It transpires here that the self-consistent particle dynamics and field evolution, when summed over, correspond to the theory of the MCI [3, 8, 9, 20, 23, 24, 25, 26, 27, 28, 29, 30, 31], where appropriate. The Fourier transforms of the excited fields, in the saturated regime of the instability, constitute our simulated ICE spectra, presented in Sec. 5. This approach has previously been successfully applied to interpret ICE observations from MCF plasmas, notably JET [20, 28, 29, 30, 31], KSTAR [3, 8, 9] and NBI-heated hydrogen plasmas in LHD [18].

We note that our first-principles Maxwell-Lorentz 1D3V PIC approach necessarily omits a very large number (tens, perhaps hundreds) of physical effects that may contribute to the observed ICE spectra. These potentially include: toroidal magnetic field effects; background gradients, for example of magnetic field strength and density; dissipation effects, other than the cyclotron (and Landau) resonant effects that are captured by the PIC approach; wave propagation effects, other than (ω, k) dispersion which is an emergent property at the Maxwell-Lorentz PIC level of description, together with slab geometry growth or damping which is also emergent; antenna characteristics; and signal processing effects.

Discrepancies between Maxwell-Lorentz PIC outputs and the observed ICE

6 CONCLUSIONS

spectrum are therefore to be expected, and will be due to physical effects, and combinations thereof, under the headings outlined in the preceding paragraph. The degree of agreement between our PIC outputs and the observed ICE spectra, reported here in Sec. 5, suggests that it is possible that none of the additional physical effects play a major role in determining the overall ICE spectrum. The cost-benefit of trying to isolate which (perhaps several together) of these additional effects is primarily responsible for the relatively minor differences between PIC outputs and the observed ICE spectra may, or may not, be attractive for future studies. At present we are able to conclude that the plasma physics emission mechanism for this ICE is well understood, aided by the fact that ICE is evidently a highly spatially localised phenomenon. The results presented here further reinforce the scope for exploiting ICE for diagnostic purposes.

Specifically, we are able to explain the physical origin of, and difference between, the ICE spectra obtained from three deuterium plasmas in LHD that differ primarily in their edge density. The collective instability of deuterons at about 67 keV originating from NBI #5, and relaxing under the non linear MCI in the outer midplane edge region is shown to be responsible for the ICE. An important consequence of the different edge densities across the three plasmas is that the ratio of v_{NBI}/V_A for freshly ionised NBI deuterons near their injection point changes while v_{NBI} is kept constant. The NBI deuterons are significantly sub-Alfvénic: $v_{NBI}/V_A = 0.36, 0.44$ and 0.60 . Our PIC-hybrid computations of the collective relaxation of these NBI deuterons, evolving self-consistently with the thermal plasma and the excited electric and magnetic fields under the Maxwell-Lorentz equations, show similar trends with the LHD ICE observations. In particular, as the

REFERENCES

value of v_{NBI}/V_A increases, the number of cyclotron harmonic peaks in the simulated ICE spectra increases, along with their amplitude. These results are consistent with our recent comparison of ICE from super-Alfvénic and sub-Alfvénic NBI proton populations in LHD [18]. They also appear broadly consistent with the results of earlier ICE experiments carried out in TFTR, involving gas puffing [42, 35].

7 Acknowledgments

This work has been carried out within the framework of the EUROfusion Consortium and has received funding from the Euratom research and training programme 2014-2018 and 2019-2020 under grant agreement No 633053. The work received support from the RCUK Energy Programme [grant number EP/T012250/1], NIFS budget NIFS15KLPF045 and from NRF Korea grant no. 2014M1A7A1A03029881. The views and opinions expressed herein do not necessarily reflect those of the European Commission. ROD acknowledges the hospitality of Kyushu University. BCGR acknowledges helpful discussion with Dr. Carbajal-Gomez.

References

- [1] Kenji Saito, Hiroe Igami, Mieko Toida, Tsuyoshi Akiyama, Shuji Kamio, Ryosuke Seki, LHD Experiment Group, et al. RF wave detection with high-frequency magnetic probes in LHD. *Plasma and Fusion Research*, 13:3402043–3402043, 2018.
- [2] Shekar G. Thatipamula, G.S. Yun, J. Leem, Hyeon Keo Park, K.W.

REFERENCES

- Kim, T. Akiyama, and S.G. Lee. Dynamic spectra of radio frequency bursts associated with edge-localized modes. *Plasma Physics and Controlled Fusion*, 58(6):065003, 2016.
- [3] B. Chapman, R.O. Dendy, K.G. McClements, S.C. Chapman, G.S. Yun, S.G. Thatipamula, and M.H. Kim. Sub-microsecond temporal evolution of edge density during edge localized modes in KSTAR tokamak plasmas inferred from ion cyclotron emission. *Nuclear Fusion*, 57(12):124004, 2017.
- [4] TFR Equipe. High-power neutral injection and ion power balance in TFR. *Nuclear Fusion*, 18(9):1271, 1978.
- [5] G.A. Cottrell, V.P. Bhatnagar, O. Da Costa, R.O. Dendy, J. Jacquinet, K.G. McClements, D.C. McCune, M.F.F. Nave, P. Smeulders, and D.F.H. Start. Ion cyclotron emission measurements during JET deuterium-tritium experiments. *Nuclear Fusion*, 33(9):1365, 1993. doi: 10.1088/0029-5515/33/9/I10. URL <http://iopscience.iop.org/0029-5515/33/9/I10/>.
- [6] K.G. McClements, C. Hunt, R.O. Dendy, and G.A. Cottrell. Ion cyclotron emission from JET DT plasmas. *Physical Review Letters*, 82(10):2099–2102, 1999. URL <http://0-journals.aps.org.pugwash.lib.warwick.ac.uk/prl/pdf/10.1103/PhysRevLett.82.2099>.
- [7] R.O. Dendy, K.G. McClements, C.N. Lashmore-Davies, G.A. Cottrell, R. Majeski, and S. Cauffman. Ion cyclotron emission due to collective instability of fusion products and beam ions in TFTR and JET. *Nuclear Fusion*, 35(12):1733, 1995.

REFERENCES

URL <http://0-iopscience.iop.org/pugwash.lib.warwick.ac.uk/article/10.1088/0029-5515/35/12/I38/pdf>.

- [8] Benjamin Chapman, Richard O. Dendy, Sandra C. Chapman, Kenneth G. McClements, Gunsu S. Yun, Shekar Goud Thatipamula, and Minho Kim. Nonlinear wave interactions generate high-harmonic cyclotron emission from fusion-born protons during a KSTAR ELM crash. *Nuclear Fusion*, 58(9):096027, 2018.
- [9] B. Chapman, R.O. Dendy, S.C. Chapman, K.G. McClements, G.S. Yun, S.G. Thatipamula, and M.H. Kim. Interpretation of suprathermal emission at deuteron cyclotron harmonics from deuterium plasmas heated by neutral beam injection in the KSTAR tokamak. *Nuclear Fusion*, 59(10):106021, 2019.
- [10] KE Thome, DC Pace, RI Pinsky, MA Van Zeeland, WW Heidbrink, and ME Austin. Central ion cyclotron emission in the DIII-D tokamak. *Nuclear Fusion*, 59(8):086011, 2019.
- [11] R Ouchoukov, V Bobkov, B Chapman, R Dendy, M Dunne, H Faugel, M García-Muñoz, B Geiger, P Hennequin, KG McClements, et al. Observations of core ion cyclotron emission on ASDEX-Upgrade tokamak. *Review of Scientific Instruments*, 89(10):10J101, 2018.
- [12] R Ouchoukov, R Bilato, V Bobkov, B Chapman, SC Chapman, RO Dendy, M Dunne, H Faugel, M García-Muñoz, B Geiger, et al. Core plasma ion cyclotron emission driven by fusion-born ions. *Nuclear Fusion*, 59(1):014001, 2018.
- [13] R Ouchoukov, KG McClements, R Bilato, V Bobkov, B Chapman,

REFERENCES

- SC Chapman, RO Dendy, M Dreval, H Faugel, J-M Noterdaeme, et al. Interpretation of core ion cyclotron emission driven by sub-Alfvénic beam-injected ions via magnetoacoustic cyclotron instability. *Nuclear Fusion*, 59(8):086032, 2019.
- [14] LG Askinazi, AA Belokurov, DB Gin, VA Kornev, SV Lebedev, AE Shevelev, AS Tukachinsky, and NA Zhubr. Ion cyclotron emission in NBI-heated plasmas in the TUMAN-3M tokamak. *Nuclear Fusion*, 58(8):082003, 2018.
- [15] LN Liu, XJ Zhang, YB Zhu, CM Qin, YP Zhao, S Yuan, YZ Mao, MH Li, Y Chen, J Cheng, et al. Ion cyclotron emission diagnostic system on the experimental advanced superconducting tokamak and first detection of energetic-particle-driven radiation. *Review of Scientific Instruments*, 90(6):063504, 2019.
- [16] Kenji Saito, H. Kasahara, T. Seki, R. Kumazawa, Takashi Mutoh, Tsuguhiro Watanabe, Fujio Shimpo, Goro Nomura, Masaki Osakabe, M Ichimura, et al. Measurement of ion cyclotron emissions by use of ICRF heating antennas in LHD. *Fusion Engineering and Design*, 84(7):1676–1679, 2009.
- [17] Kenji Saito, Ryuhei Kumazawa, Tetsuo Seki, Hiroshi Kasahara, Goro Nomura, Fujio Shimpo, Hiroe Igami, Mitsutaka Isobe, Kunihiro Ogawa, Kazuo Toi, et al. Measurement of ion cyclotron emissions by using high-frequency magnetic probes in the LHD. *Plasma Science and Technology*, 15(3):209, 2013.
- [18] BCG Reman, RO Dendy, T Akiyama, SC Chapman, JWS Cook,

1
2
3
4
5
6
7
8
9
10
11
12
13
14
15
16
17
18
19
20
21
22
23
24
25
26
27
28
29
30
31
32
33
34
35
36
37
38
39
40
41
42
43
44
45
46
47
48
49
50
51
52
53
54
55
56
57
58
59
60

REFERENCES

- H Igami, S Inagaki, K Saito, and GS Yun. Interpreting observations of ion cyclotron emission from large helical device plasmas with beam-injected ion populations. *Nuclear Fusion*, 59(9):096013, 2019.
- [19] Shekar G Thatipamula, MH Kim, J Kim, JH Kim, and GS Yun. Radio frequency emissions driven by energetic ions from neutral beam in KSTAR low confinement mode plasma. *Plasma Physics and Controlled Fusion*, 62(3):035004, 2020.
- [20] Kenneth G McClements, Alexandra Brisset, Benjamin Chapman, Sandra C Chapman, Richard O Dendy, Philippe Jacquet, Vasily Kiptily, Mervi Mantsinen, and Bernard CG Reman. Observations and modelling of ion cyclotron emission observed in JET plasmas using a sub-harmonic arc detection system during ion cyclotron resonance heating. *Nuclear Fusion*, 58(9):096020, 2018.
- [21] K.E. Thome, D.C. Pace, R.I. Pinsky, O. Meneghini, C.A. del Castillo, and Y. Zhu. Radio frequency measurements of energetic-particle-driven emission using the ion cyclotron emission diagnostic on the DIII-D tokamak. *Review of Scientific Instruments*, 89(10):10I102, 2018.
- [22] Eric D Fredrickson, NN Gorelenkov, RE Bell, A Diallo, BP LeBlanc, M Podestà, and NSTX Team. Emission in the ion cyclotron range of frequencies (ice) on NSTX and NSTX-U. *Physics of Plasmas*, 26(3):032111, 2019.
- [23] V.S. Belikov and Ya. I. Kolesnichenko. *Soviet Physics Technical Physics*, 20:1146, 1976.
- [24] R.O. Dendy, Chris N. Lashmore Davies, and K.F. Kam. A

REFERENCES

- possible excitation mechanism for observed superthermal ion cyclotron emission from tokamak plasmas. *Physics of Fluids B: Plasma Physics (1989-1993)*, 4(12):3996–4006, 1992. doi: 10.1063/1.860304. URL <http://scitation.aip.org/content/aip/journal/pofb/4/12/10.1063/1.860304>.
- [25] R. O. Dendy, C.N. Lashmore Davies, and K. F. Kam. The magnetoacoustic cyclotron instability of an extended shell distribution of energetic ions. *Physics of Fluids B: Plasma Physics (1989-1993)*, 5(7):1937–1944, 1993.
- [26] R.O. Dendy, C.N. Lashmore-Davies, K.G. McClements, and G.A. Cottrell. The excitation of obliquely propagating fast Alfvén waves at fusion ion cyclotron harmonics. *Physics of Plasmas*, 1(6):1918–1928, 1994. doi: 10.1063/1.870647. URL <http://dx.doi.org/10.1063/1.870647>.
- [27] R.O. Dendy, K.G. McClements, C.N. Lashmore-Davies, R. Majeski, and S. Cauffman. A mechanism for beam-driven excitation of ion cyclotron harmonic waves in the Tokamak Fusion Test Reactor. *Physics of Plasmas*, 1(10):3407–3413, 1994.
- [28] J.W.S. Cook, R. O. Dendy, and S.C. Chapman. Particle-in-cell simulations of the magnetoacoustic cyclotron instability of fusion-born alpha particles in tokamak plasmas. *Plasma Physics and Controlled Fusion*, 55(6):065003, 2013. doi: 10.1088/0741-3335/55/6/06500. URL <http://dx.doi.org/10.1088/0741-3335/55/6/06500>.
- [29] L. Carbajal, R. O. Dendy, S.C. Chapman, and J.W.S. Cook. Linear and nonlinear physics of the magnetoacoustic cyclotron instability of fusion

REFERENCES

- born-ions in relation to ion cyclotron emission. *Physics of Plasmas*, 21(1):012106, 2014. doi: 0.1063/1.4861866. URL <http://dx.doi.org/0.1063/1.4861866>.
- [30] J.W.S. Cook, R.O. Dendy, and S.C. Chapman. Stimulated emission of fast Alfvén waves within magnetically confined fusion plasmas. *Physical Review Letters*, 118(18):185001, 2017.
- [31] L. Carbajal, R.O. Dendy, S.C. Chapman, and J.W.S. Cook. Quantifying fusion born ion populations in magnetically confined plasmas using ion cyclotron emission. *Physical Review Letters*, 118(10):105001, 2017.
- [32] K. G. McClements, R. O. Dendy, C.N. Lashmore Davies, G. A Cottrell, S. Cauffman, and R. Majeski. Interpretation of ion cyclotron emission from sub-Alfvénic fusion products in the Tokamak Fusion Test Reactor. *Physics of Plasmas*, 3:543–553, 1995. doi: 10.1063/1.871881. URL <http://dx.doi.org/10.1063/1.871881>.
- [33] B Chapman, RO Dendy, SC Chapman, LA Holland, SWA Irvine, and BCG Reman. Comparing theory and simulation of ion cyclotron emission from energetic ion populations with spherical shell and ring-beam distributions in velocity-space. *Plasma Physics and Controlled Fusion*, 62(5):055003, 2020.
- [34] Lunan Liu, R Ochoukov, KG McClements, RO Dendy, V Bobkov, M Weiland, R Bilato, H Faugel, D Moseev, M Salewski, et al. Explanation of core ion cyclotron emission from beam-ion heated plasmas in ASDEX Upgrade by the magnetoacoustic cyclotron instability. *Nuclear Fusion*, 61(2):026004, 2020.

1
2
3
4
5
6
7
8
9
10
11
12
13
14
15
16
17
18
19
20
21
22
23
24
25
26
27
28
29
30
31
32
33
34
35
36
37
38
39
40
41
42
43
44
45
46
47
48
49
50
51
52
53
54
55
56
57
58
59
60

REFERENCES

- [35] S. Cauffman, R. Majeski, K.G. McClements, and R.O. Dendy. Alfvénic behaviour of alpha particle driven ion cyclotron emission in TFTR. *Nuclear Fusion*, 35(12):1597, 1995.
- [36] T.D. Arber, Keith Bennett, C.S. Brady, A. Lawrence-Douglas, M.G. Ramsay, N.J. Sircombe, P. Gillies, R.G. Evans, Holger Schmitz, A.R. Bell, et al. Contemporary particle-in-cell approach to laser-plasma modelling. *Plasma Physics and Controlled Fusion*, 57(11):113001, 2015.
- [37] S. Cauffman, R. Majeski, K. G. McClements, and R. O. Dendy. Alfvénic behaviour of alpha particle driven ion cyclotron emission in TFTR. *Nuclear Fusion*, 35:1597–1602, 1995. URL <http://iopscience.iop.org/0029-5515/35/12/I22>.
- [38] G Yun and T Akiyama. Fast RF Spectrometer System on LHD. *Annual Report of National Institute for Fusion Science*, page 46, 2012.
- [39] G Yun and T Akiyama. Fast RF Spectrometer System on LHD. *Annual Report of National Institute for Fusion Science*, page 53, 2013.
- [40] G Yun and T Akiyama. Fast RF Spectrometer System on LHD. *Annual Report of National Institute for Fusion Science*, page 58, 2014.
- [41] Minh Kim, Shekar Goud Thatipamula, Jayhyun Kim, Minjun J Choi, Jaehyun Lee, Woochang Lee, Minwoo Kim, Youngdae Yoon, and Gunsu S Yun. Intense whistler-frequency emissions at the pedestal collapse in KSTAR H-mode plasmas. *Nuclear Fusion*, 60:126021, 2020.
- [42] S. Cauffman and R. Majeski. Ion cyclotron emission on the Tokamak Fusion Test Reactor. *Review of Scientific Instruments*, 66(1):817–819, 1995.

REFERENCES

- [43] D.W. Hewett. Low-frequency electromagnetic (Darwin) applications in plasma simulation. *Computer Physics Communications*, 84(1):243 – 277, 1994. ISSN 0010-4655. doi: [https://doi.org/10.1016/0010-4655\(94\)90214-3](https://doi.org/10.1016/0010-4655(94)90214-3). URL <http://www.sciencedirect.com/science/article/pii/0010465594902143>.
- [44] D Winske and N Omidi. A nonspecialist’s guide to kinetic simulations of space plasmas. *Journal of Geophysical Research: Space Physics*, 101 (A8):17287–17303, 1996.
- [45] Sadayoshi Murakami, Noriyoshi Nakajima, and Masao Okamoto. Finite β effects on the ICRF and NBI heating in the Large Helical Device. *Fusion Technology*, 27(3T):256–259, 1995.
- [46] Ryosuke Seki, Kunihiro Ogawa, Mitsutaka Isobe, Masayuki Yokoyama, Sadayoshi Murakami, Hideo Nuga, Shuji Kamio, Yutaka Fujiwara, Masaki Osakabe, LHD Experiment Group, et al. Evaluation of neutron emission rate with FIT3D-DD code in Large Helical Device. *Plasma and Fusion Research*, 14:3402126–3402126, 2019.
- [47] Charles K Birdsall and A Bruce Langdon. *Plasma physics via computer simulation*. CRC press, 2004.
- [48] R.D. Sydora. Low-noise electromagnetic and relativistic particle-in-cell plasma simulation models. *Journal of Computational and Applied Mathematics*, 109(1):243–259, 1999.
- [49] Rep Kubo. The fluctuation-dissipation theorem. *Reports on Progress in Physics*, 29(1):255, 1966.

A APPENDIX

A Appendix

We have checked the noise level of our simulation results by running PIC-hybrid calculations without any energetic minority population, retaining only the deuterium thermal background plasma, and with all other parameters kept equal, for each of three plasmas. The noise in the simulation is not compared to the noise of the experimental detection system. We simply aim to establish the significance of the spectral peaks in the PIC-based simulations that include NBI ions, with respect to the spectral peaks that are generated by thermal noise in the code. Figure 10 displays: the power spectra for computations that include both the NBI and thermal deuterons, shown by continuous lines; and the spectra obtained from the simulations that retain only the thermal deuterium plasma, shown by the dashed curves. The spectral peaks in the latter case result from the concentration of noise energy at normal modes - in this case, cyclotron harmonic waves supported by the thermal plasma - in line with the fluctuation dissipation theorem [49]. The dashed lines in Fig. 10 indicate that the fundamental computational noise level is similar in all our simulations, at -145dB , although slightly higher for the simulation of LHD plasma 138433.

A APPENDIX

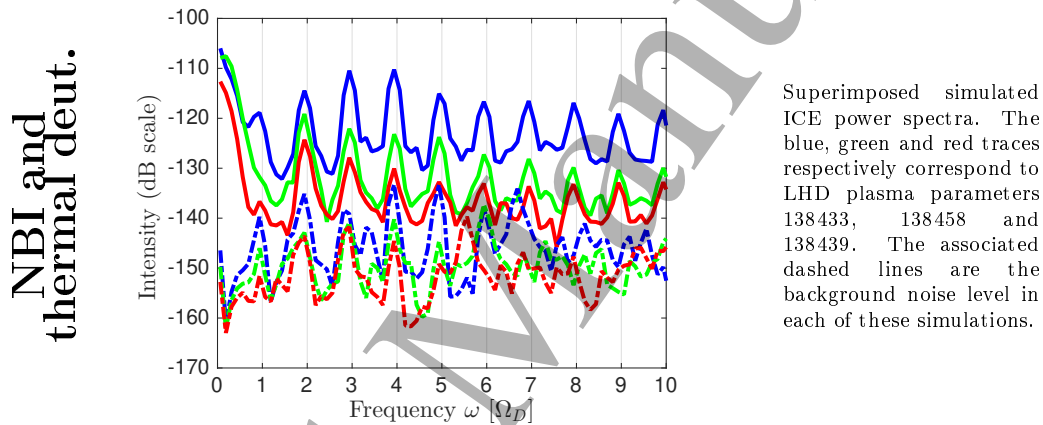


Figure 10: Quantifying the effect of noise on spectral characteristics in our PIC-hybrid simulations. Power spectra from simulations that contain both NBI and thermal deuterons are shown as solid traces. Dashed lines are the spectral peaks in the absence of NBI deuterons. The blue, green and red traces respectively correspond to LHD plasma parameters at the ICE location for plasmas 138433 ($v_{NBI}/V_A = 0.60$), 138458 ($v_{NBI}/V_A = 0.44$) and 138439 ($v_{NBI}/V_A = 0.36$).