

(Published online)

## Correction to: Ionospheric response to the 25-26 August 2018 intense geomagnetic storm

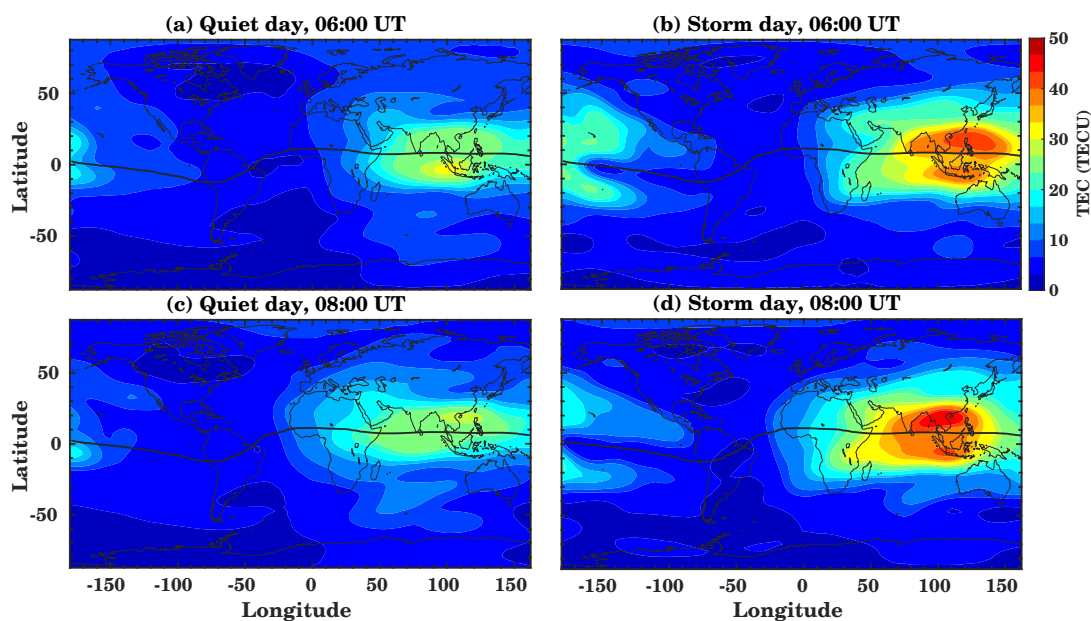
R. Vaishnav, Ch. Jacobi

*Institute for Meteorology, Universität Leipzig, Stephanstr. 3, 04103 Leipzig, Germany  
E-Mail: rajesh\_ishwardas.vaishnav@uni-leipzig.de*

In the original article (Vaishnav and Jacobi, 2020), Figure 2 described the global IGS TEC maps were misleading due to incorrect time frames and have to be corrected. We corrected the Figure along with the caption.

A correction has also been made to the section 3.2 IGS TEC variations: 'Maximum observed TEC during the quiet time was about 30 TECU at low latitudes. The Figure shows a significant difference from the quiet day to disturbed conditions. Maximum observed TEC during the storm day was about 45 TECU.'

The conclusions of the paper are not affected by these corrections.



*Fig. 2: Global IGS TEC maps for 06:00 UT (a,b) and 08:00 UT (c,d) on a quiet (25 August, left) and a storm day (26 August, right). The black solid line represents the geomagnetic equator.*

### References

Vaishnav, R. and Jacobi, C., 2020: Ionospheric response to the 25-26 August 2018 intense geomagnetic storm, In M. Wendisch (Ed.), *Meteorologische Arbeiten aus Leipzig*, 25, 1–10, Institut für Meteorologie der Universität Leipzig, Leipzig, Germany.