

Accepted Manuscript



Title: Biogeography and Phylogenetic Position of a Warm-stenotherm Centric Diatom, *Skeletonema potamos* (C.I. Weber) Hasle and its Long-term Dynamics in the River Danube

Author: Mónika Duleba Luc Ector Zsófia Horváth Keve
Tihamér Kiss Levente Farkas Molnár Zsuzsanna Pohner
Zsuzsa Szilágyi Bence Tóth Csaba Ferenc Vad Gábor Várbíró
Éva Ács

PII: S1434-4610(14)00081-9
DOI: <http://dx.doi.org/doi:10.1016/j.protis.2014.08.001>
Reference: PROTIS 25452

To appear in:

Received date: 4-1-2014
Revised date: 7-8-2014
Accepted date: 8-8-2014

Please cite this article as: Duleba, M., Ector, L., Horváth, Z., Kiss, K.T., Molnár, L.F., Pohner, Z., Szilágyi, Z., Tóth, B., Vad, C.F., Várbíró, G., Ács, É., Biogeography and Phylogenetic Position of a Warm-stenotherm Centric Diatom, *Skeletonema potamos* (C.I. Weber) Hasle and its Long-term Dynamics in the River Danube, *Protist* (2014), <http://dx.doi.org/10.1016/j.protis.2014.08.001>

This is a PDF file of an unedited manuscript that has been accepted for publication. As a service to our customers we are providing this early version of the manuscript. The manuscript will undergo copyediting, typesetting, and review of the resulting proof before it is published in its final form. Please note that during the production process errors may be discovered which could affect the content, and all legal disclaimers that apply to the journal pertain.

ORIGINAL PAPER

1
2 **Biogeography and Phylogenetic Position of a Warm-stenotherm Centric Diatom,**
3
4 ***Skeletonema potamos* (C.I. Weber) Hasle and its Long-term Dynamics in the River**
5
6
7 **Danube**
8
9

10
11 **Mónika Duleba^a, Luc Ector^b, Zsófia Horváth^c, Keve Tihamér Kiss^a, Levente Farkas**
12
13 **Molnár^d, Zsuzsanna Pohner^e Zsuzsa, Szilágyi^d, Bence Tóth^a, Csaba Ferenc Vad^d, Gábor**
14
15 **Várbíró^a, and Éva Ács^{a,1}**
16
17
18
19
20

21
22 ^aDanube Research Institute, MTA Centre for Ecological Research, Karolina út 29, H-1113
23 Budapest, Hungary
24

25 ^bDepartment of Environment and Agro-biotechnologies (EVA), Public Research Centre-
26 Gabriel Lippmann, 41 rue du Brill, L-4422 Belvaux, Luxembourg
27

28 ^cWasserCluster Lunz, Dr. Carl Kupelwieser Promenade 5, A-3293 Lunz am See, Austria
29

30 ^dDoctoral School of Environmental Sciences, Eötvös Loránd University, Pázmány Péter
31 sétány 1/A, H-1117 Budapest, Hungary
32

33 ^eDepartment of Microbiology, Institute of Biology, Eötvös Loránd University, Pázmány Péter
34 sétány 1/C, H-1117 Budapest, Hungary
35
36
37
38
39

40 Submitted January 4, 2014; Accepted August 8, 2014
41

42 Monitoring Editor: Marina Montresor
43
44
45

46
47 **Running title:** Phylogeny and Ecology of *Skeletonema potamos*
48
49
50
51

52 ¹Corresponding author; fax +36 1 2793105
53

54 e-mail acs.eva@okologia.mta.hu (E. Ács).
55
56
57
58
59
60
61
62
63
64
65

1
2
3
4
5
6
7
8
9
10
11
12
13
14
15
16
17
18
19
20
21
22
23
24
25
26
27
28
29
30
31
32
33
34
35
36
37
38
39
40
41
42
43
44
45
46
47
48
49
50
51
52
53
54
55
56
57
58
59
60
61
62
63
64
65

Skeletonema potamos is a poorly known freshwater species in the ancestrally and predominantly marine genus *Skeletonema*. With phylogenetic analysis of two nuclear {partial *SSU* (18S) and partial *LSU* (28S) rDNA} and two chloroplast (*rbcL* and *psbC*) genes, we verified its placement within the genus *Skeletonema* and identified the mostly brackish species, *Skeletonema subsalsum*, as its closest known relative. Comparisons of *SSU* and *LSU* rRNA genes from *S. potamos* populations from Europe and North America revealed no intraspecific variation. *Skeletonema potamos* can be a dominant element of the phytoplankton community in various ecosystems, including the River Danube. We tracked phytoplankton composition in the River Danube weekly from 1979 to 2012, and throughout this period, *S. potamos* exhibited a strong increase in proportion of total phytoplankton abundance and biomass – an increase that was correlated with increasing water temperature over the same time period. Current records indicate a temperate distribution of *S. potamos*, but ecological data predict possible expansion of its geographic range and increase in seasonal duration within existing habitats in response to the warming of surface waters.

Key words: biogeography; ecology; phylogeny; global warming; *Skeletonema potamos*.

Introduction

1
2
3
4
5 The classic taxonomy of diatoms is morphology-based using features of their characteristic
6 silica cell wall called frustule (e.g. Ettl et al. 1986). Medlin et al. (1988) introduced molecular
7 methods into diatom taxonomy. Based on molecular, morphological and cytological results,
8
9
10
11
12 Medlin and Kaczmarska (2004) proposed major clades of diatoms including Mediophyceae
13
14 for bipolar centrics and the Thalassiosirales. Phylogenetic relationships of this latter order
15
16 were reconstructed by Alverson et al. (2007).
17

18
19 Recently, morphological studies are supplemented by molecular investigations on
20
21 various *Skeletonema* species (Alverson and Kolnick 2005; Kooistra et al. 2008; Sarno et al.
22
23 2005, 2007). Medlin et al. (1988) determined the phylogenetic status of the marine diatom
24
25 *Skeletonema costatum* among the eukaryotes based on 16S-like (=18S) rDNA. Molecular
26
27 and/or morphological studies investigated *S. costatum* or *S. costatum*-like diatoms and
28
29 revealed new species, such as *S. pseudocostatum* (Medlin et al. 1991), *S. grevillei* (Zingone et
30
31 al. 2005), *S. dohrnii*, *S. grethae*, *S. japonicum*, *S. marinoi* (Sarno et al. 2005) and *S. ardens*
32
33 (Sarno et al. 2007). *Skeletonema* was found to be monophyletic and ancestrally a marine
34
35 genus (Alverson et al. 2007). There are only two non-marine species in this genus: *S.*
36
37 *subsalsum* occurring mainly in saline and brackish waters and occasionally in freshwater
38
39 habitats (Aké Castillo et al. 1995; Gibson et al. 1993; Hasle Evensen 1975; Hustedt 1957)
40
41 and *S. potamos* that is recorded from freshwater and slightly brackish habitats (Kiss et al.
42
43 2012). This latter species was not involved in molecular investigations previously.
44
45
46
47
48
49

50
51 *Microsiphonia potamos* C.I. Weber was first collected in 1966 from the Little Miami
52
53 River, Cincinnati, Ohio and described by Weber (1970). New material from the Little Miami
54
55 River, 25 May 1973, was observed by Hasle and Evensen (1976) and as they found this
56
57 species highly similar to species of the genus *Skeletonema*, suggested its transfer to this genus
58
59
60
61
62
63
64
65

1 as *Skeletonema potamos* (C.I. Weber) Hasle in Hasle & Evensen; they found the same taxon
2 in the liquid-preserved sample from the Jensensee, Plön (Germany), 19 August 1922, Hustedt
3
4 Collection E 4555, which Hustedt (1928) used when preparing the description of the diatom
5
6 to which he applied erroneously the name *Stephanodiscus subsalsus* (Cleve-Euler) Hustedt.
7
8
9 *Skeletonema potamos* is a broadly distributed species (Supplementary Material Table S1) and
10
11 is considered invasive in several regions, including the Great Lakes of the United States
12
13 (Mills et al.1993), the River Loire in France (Descy et al. 2012), and the River Elbe in the
14
15 Czech Republic (Desortová et al. 2011). Investigations of phytoplankton in the River Danube
16
17 at Göd have been carried out with weekly sampling frequency for more than thirty years.
18
19
20 Diatoms in the order Thalassiosirales were among the most abundant in the phytoplankton in
21
22 this system, with *Skeletonema potamos* (C.I. Weber) Hasle and various *Stephanodiscus*
23
24 species among the dominant taxa (Kiss 1985; Veraszto et al. 2010). *Skeletonema potamos* was
25
26 first recorded in the Danube in the late 1950s (Kiss 1986) and subsequently became abundant
27
28 in the Hungarian stretch of the river by the end of the 1960s (Kiss et al. 1994).
29
30
31
32

33
34 Climate-associated warming has been shown in several freshwater ecosystems,
35
36 including both lakes (e.g. Lake Baikal, Hampton et al. 2008) and rivers (e.g. the River Loire,
37
38 Flourey et al. 2012). Increased temperature can have cascading ecosystem effects resulting in
39
40 shifts in the community composition. Sensitive species are replaced by more tolerant species
41
42 that change the interactions in the community (Anneville et al. 2007; Sommer et al. 2012). As
43
44 primary producers, phytoplankton plays an important role in the biochemical cycling of both
45
46 carbon and oxygen and is, therefore, an important regulator of global climate (Winder and
47
48 Sommer 2012). Climate-mediated changes in phytoplankton communities have the potential
49
50 to alter ecosystem functioning on both local and global scales. Sommer et al. (2012)
51
52 summarised known responses of phytoplankton including changes in community biomass and
53
54 biodiversity, range shifts and alterations in seasonality. One of the best known examples is the
55
56
57
58
59
60
61
62
63
64
65

1 spread of *Cylindrospermopsis raciborskii* (Woloszynska) Seenayya & Subba Raju , a
2 cyanobacterium with a tropical origin, which expanded its original range towards the
3
4 temperate zone both on the northern and the southern hemisphere, where it is now considered
5
6
7 invasive in many lakes (Ryan and Hamilton 2003; Stüken et al. 2006). Northward expansion
8
9 of other thermophilic phytoplankton species can be also enhanced by climate change, such as
10
11 mild winters that enabled the permanent establishment of some diatom (e.g. *Rhizosolenia*
12
13 *indica*) and dinoflagellate (e.g. *Alexandrium minutum*) species in the North Sea and the
14
15 German Bight (Nehring 1998). Warming can also enhance the frequency of harmful algal
16
17 blooms (Paerl and Paul 2012).
18
19
20

21
22 In the case of the River Danube, Sipkay et al. (2009) predicted a global warming-related
23
24 increase in total phytoplankton abundance and large inter-annual differences by the end of the
25
26 century. According to Sipkay et al. (2012), a linear temperature rise leads to drastic changes
27
28 in phytoplankton biomass only in case of high nutrient load.
29
30

31
32 We had two major aims in our study. First, we aimed to extend the knowledge on the
33
34 taxonomy of *S. potamos* and clarify the taxonomic status of the species. To achieve this, we
35
36 applied both morphological and molecular analyses. Our second aim was to study ecological
37
38 features of *S. potamos*. We collected all available information on the distribution of *S.*
39
40 *potamos*. Based on long-term data (for more than three decades), we aimed to find
41
42 relationships with possible environmental drivers which enabled this species to become the
43
44 dominant member of the phytoplankton of River Danube in warm-water periods.
45
46
47
48
49
50

51 **Results**

52 Morphology of *Skeletonema potamos*

53
54
55
56 *Skeletonema potamos* is one of the smallest centric diatoms in the River Danube, and its thin
57
58 frustule and small chloroplasts make it easy to be overlooked (Fig. 1A). It commonly occurs
59
60
61
62
63
64
65

1
2
3
4
5
6
7
8
9
10
11
12
13
14
15
16
17
18
19
20
21
22
23
24
25
26
27
28
29
30
31
32
33
34
35
36
37
38
39
40
41
42
43
44
45
46
47
48
49
50
51
52
53
54
55
56
57
58
59
60
61
62
63
64
65

in chains comprising 2–4 cells, but both single cells and longer chains (6–10 cells) are also somewhat common. Within chains, cells are connected by marginal fuloportulae (Fig. 1B, C) that are barely visible in untreated samples under the light microscope (Fig. 1A). Cell diameter ranges from 3.0 to 6.5 μm (average: 4.5 μm), and the perivalvar axis ranges from 5 to 18 μm (average: 10 μm) in length. The valve face is flat in the centre and slightly rounded near the valve mantle (Fig. 1F). There are fine radial striae on the valve face, consisting of irregular polygonal areolae and branched (2–3 times) interfascicles (Fig. 1D, E). A ring of 4–8 marginal fuloportulae is situated at the valve margin (Fig. 1F, G). The fuloportulae are tubular externally, the cleft at the distal tip and their silica-wall is relatively thick like the valve face with the rib-like elevations extending from the valve surface onto the fuloportulae (Fig. 1E, F, H). At the bases of fuloportulae, external pores cannot be found (a difference compared to *S. subsalsum*). A single rimoportula is visible close to the ring of marginal fuloportulae (Fig. 1F), it can be in a different position in terminal and intercalary valves (similarly to some other *Skeletonema* species). The structure of the valve mantle is the same as that of the valve face with irregular polygonal areolae (Fig. 1D, F). Numerous bands compose the thin girdle. The valve is more heavily silicified than the girdle.

Specificity of Primers and Phylogenetic Analyses of *Skeletonema potamos*

We were able to acquire SSU and LSU rDNA from the River Danube and River Tisza samples, as well as the Missouri River culture. However, plastid genes could be sequenced only from the isolated cells of River Danube and from the Missouri River culture.

Our *Skeletonema*-specific SSU and LSU rDNA primers successfully isolated *S. potamos* sequences from the River Tisza community DNA. The plastid primers were, however, more conserved and therefore not limited to members of *Skeletonema*, so we could only amplify these genes from clonal culture from the River Missouri and isolated cells from the River

1 Danube. The nuclear SSU rDNA (Supplementary Material Figs S1, S3) and LSU
2 (Supplementary Material Figs S1, S4) sequences were identical among the Missouri culture,
3
4 Danube and Tisza populations. Moreover, these nuclear rDNA sequences were identical to
5
6 those of a brackish culture from Japan (GenBank AB728775 and AB728772) identified as *S.*
7
8 *subsalsum*. One nucleotide substitution in the *rbcL* gene separated the Danube population and
9
10 Missouri River culture. This substitution was in the third position of the codon. Phylogenetic
11
12 analysis of the single-gene (data not shown), the combined two-gene (18S rDNA+28S rDNA
13
14 and *rbcL+psbC*, Supplementary Material Figs S1, S2) and the four-gene dataset (Fig. 2)
15
16 placed *S. potamos* well within the genus *Skeletonema* supporting the monophyly of this genus
17
18 and identified *S. subsalsum* as its closest relative. *Skeletonema potamos* therefore represents a
19
20 recent freshwater coloniser within Thalassiosirales.
21
22
23
24

25
26 Based on the plastid genes, *S. potamos* and *S. subsalsum* formed a lineage distinct from
27
28 other species within the genus (Supplementary Material Fig. S1). Since 18S and 28S rDNA
29
30 sequences are available from more *Skeletonema* species than *rbcL* or *psbC*, we were able to
31
32 investigate the phylogenetic position of *S. potamos* compared to more *Skeletonema* taxa based
33
34 on the ribosomal genes than on the plastid genes. *S. costatum rbcL* and *psbC* sequences were
35
36 involved in just the single-gene analyses (data not shown), because these plastid gene
37
38 sequences are available from different strains. According to both the LSU and SSU rDNA, the
39
40 *S. potamos-S. subsalsum* lineage also involved *S. costatum*, however, the position of this
41
42 lineage compared to other *Skeletonema* species differed between the 18S and 28S rDNA-
43
44 phylogeny (Supplementary Material Fig. S2).
45
46
47
48
49

50
51 In most *Skeletonema* species, intraspecific variability was observed at least in the SSU
52
53 rRNA gene (this phenomenon occurred also in both ribosomal genes in *S. marinoi-dohrnii*, *S.*
54
55 *menzelii*, *S. grethae*, *S. tropicum*, *S. costatum*; it have to be mentioned that only one SSU
56
57
58
59
60
61
62
63
64
65

1 rDNA sequence was available for *S. grevillei*). Invariability in both genes was observed only
2 in *S. potamos* and *S. ardens* (Supplementary Material Figs S3, S4).
3
4
5
6

7 Geographical Distribution of *Skeletonema potamos*

8
9
10 *Skeletonema potamos* is broadly distributed across the temperate zone (Fig. 3). The species is
11 most common in Europe, mainly in large rivers and their reservoirs, slowly flowing tributaries
12 and connected lakes (altogether 91 water bodies). In North America, *S. potamos* was found in
13 some lakes and rivers flowing into the Atlantic and Pacific Oceans and in their estuaries
14 (altogether 61 water bodies). It was detected in South America (Brazil, Argentina) in rivers
15 and lagoons along the coastal region of Atlantic Ocean (altogether 5 water bodies). In Asia it
16 has been found in the River Ob (Russia), Lake Hovsgol (Mongolia), in a channel at Xaimen
17 (China) and it has four occurrences in Japan. From Australia, it was recorded in three water
18 bodies.
19
20
21
22
23
24
25
26
27
28
29
30

31 Long-term Change of *Skeletonema potamos* and its Response to Environmental

32 Change in the River Danube

33
34 Since the abundance and biomass of *S. potamos* showed seasonal peaks in the warmer period
35 (May-October) in the River Danube, we used these data from the years 1979-2012 to
36 investigate environmental factors that affect the quantity of this diatom. The data presented in
37 the following are also referring to this warmer period. The proportion of *S. potamos* in the
38 total phytoplankton abundance (Fig. 4A; $R^2=0.035$, $p<0.001$) and biomass (Fig. 4B; $R^2=0.$
39 017 , $p<0.0374$) showed a significant increase in the last thirty years. Mean values of relative
40 abundance increased from 5.2 to 23.6 %, and its relative biomass from 11.3 to 35.1% from
41 1979 to 2009. In 2009, its proportion reached higher values (abundance: 87.4; biomass:
42 91.4%) than at any time in the preceding 30 years. Temperature was the only significant
43
44
45
46
47
48
49
50
51
52
53
54
55
56
57
58
59
60
61
62
63
64
65

1 predictor in the linear mixed-effects model based on relative abundance of *S. potamos* (slope:
2 0.15, $p < 0.001$), while in the case of carbon biomass, temperature (slope: 0.13, $p < 0.001$) and
3 water discharge (slope: -0.04, $p < 0.01$) were significant predictors. . Water temperature in the
4 River Danube increased during the >30-year period of 1979–2012 (Table 3, Fig. 4C,
5 $R^2 = 0.023$, $p < 0.001$). The mean temperature of May–October ranged from approximately 14.9
6 to 17.7 °C until the late 1990s, but temperature did not drop below 16 °C and often exceeded
7 18 °C from 2000 to 2012. Maximum values within a year varied between 19.6–24 °C during
8 the period of 1979–1999, and between 22–27 °C during 2000–2012. Years with high and low
9 water discharge alternated in the period of 1979–2012, with a clear decrease in annual mean
10 water discharge from 2003 to 2012 compared to the period of 1979–1999 (Fig. 4D).

26 Discussion

29 Morphology of *Skeletonema potamos*

31 *Skeletonema potamos* usually occurs in chains comprising 2–4 cells in the River Danube. The
32 length of chains may depend on turbulence of the river; in low water periods when the current
33 is low (turbulence, too) chains of 6–10 cells are much frequent than in high water periods
34 when the current is higher and water is much more turbulent. We investigated the
35 morphological features of *Skeletonema potamos* populations in the River Danube and River
36 Tisza and compared them to *S. subsalsum*. *S. potamos* has 4–8 tubular fultoportulae with cleft
37 tips, without a pore at the bases of them (identical with EM micrographs of Cavalcante et al.
38 2013), whereas *S. subsalsum* has 7–14 flat, flat-bifurcated, or flat spoon-like marginal
39 fultoportulae with an external pore on the base (Hasle and Evensen 1975; Kiss et al. 2012).
40 Considering these, *Skeletonema potamos* and *S. subsalsum* are clearly distinguishable
41 morphologically based on the presence or absence of an external pore on the base of marginal
42 fultoportulae. The shape and position of the single rimoportula is hardly seen on EM

1 micrographs. It can be a little bit better seen by TEM if the position of the valve face is
2 optimal (Fig. 1 B, D arrow). It is difficult to find the small external pore of the rimoportula on
3 SEM micrographs.
4
5
6
7
8
9

10 Phylogenetic Position of *Skeletonema potamos*

11 Phylogenetic analysis resolved *S. potamos* within the genus *Skeletonema* (Fig. 2,
12 Supplementary Material Figs S1-S4), supporting the transfer of *Microsiphonia potamos* into
13 *Skeletonema* by Hasle and Evensen (1976). Phylogenetic trees also revealed *S. subsalsum* to
14 be the closest known relative of *S. potamos*.
15
16
17
18
19
20
21

22 *Skeletonema* is an ancestrally marine genus (Alverson et al. 2007). *Skeletonema*
23 *subsalsum* is euryhaline, occurring mainly in saline and brackish waters and occasionally in
24 freshwater habitats (Aké Castillo et al. 1995; Gibson et al. 1993; Hasle Evensen 1975;
25 Hustedt 1957). *Skeletonema potamos* is somewhat more specialised, being restricted to
26 freshwater and slightly brackish habitats (Kiss et al. 2012). Thus, *S. potamos* represents
27 another recent, phylogenetically restricted marine-to-freshwater transition within
28 Thalassiosirales (Alverson et al. 2007).
29
30
31
32
33
34
35
36
37
38

39 Unlike previous population-level studies of other *Skeletonema* species that revealed
40 sometimes extensive intraspecific variation at the DNA level (Sarno et al. 2005, 2007, even
41 intragenomic variation as in Alverson and Kolnick 2005), we found little or no sequence
42 variation in populations from Central Europe, the continental United States, and very likely
43 Japan. While the nuclear rDNA sequences from our Hungarian samples and the U.S. culture
44 were identical to one from a brackish culture strain from Japan (Yamada et al. 2013)
45 identified as *Skeletonema subsalsum* (GenBank AB728775 and AB728772), and because
46 *Skeletonema potamos* and *S. subsalsum* are clearly distinguishable morphologically, we
47
48
49
50
51
52
53
54
55
56
57
58
59
60
61
62
63
64
65

1 assume that the sequence from the above mentioned Japanese strain could belong to *S.*

2 *potamos*.

3
4 Small and large subunit ribosomal RNA genes are variable within other *Skeletonema*
5 species (Alverson and Kolnick 2005; Sarno et al. 2005, 2007), suggesting relatively recent
6 dispersal of *S. potamos* across the globe. More variable genetic markers and increased
7 population sampling will shed more light on its place of origin and pattern and timing of
8 dispersal.
9
10
11
12
13
14
15

16 17 18 19 Geographical Distribution of *Skeletonema potamos*

20
21 Krammer and Lange-Bertalot (1991) regarded *Skeletonema potamos* as a relatively rare
22 species. However, more than 160 localities have been published by now. Its distribution is
23 restricted to the temperate zone. The only exception is a recent record in a tropical shallow
24 channel near Itabuna (Brazil) (Cavalcante et al. 2013).
25
26
27
28
29
30

31 Data compiled from multiple localities show that *S. potamos* occurs in waters ranging
32 from 10 to 29 °C (see References and Supplementary Material: references). This may
33 represent the full temperature-tolerance range for *S. potamos*. It may survive the unfavourable
34 periods with too low or too high water temperature by forming resting stages (like many other
35 microalgae, McQuoid and Hobson 1995).
36
37
38
39
40
41
42
43
44
45

46 Relationship Between *Skeletonema potamos* and Environmental Shifts in the River

47 Danube

48
49 The relative abundance and biomass of *S. potamos* exhibited long-term increases in the River
50 Danube and were positively correlated with water temperature over the same period.
51
52 Moreover, only temperature had a long-term effect on the relative abundance of *S. potamos*.
53
54
55
56
57
58
59 Kiss et al. (1994) demonstrated that seasonal dynamics of *S. potamos* followed the changes of
60
61
62
63
64
65

1 the water temperature. They classified *S. potamos* as a warm stenotherm species based on a
2 two-year intensive study in the River Danube, which showed that water temperature was one
3 of the main factors influencing the abundance of *S. potamos*. They observed that population
4 growth started in June, with temperature around 15 °C, and decreased in September–October
5 when temperature was below 14–16 °C. A similar trend was found in the Little Miami River
6 (USA, Weber 1970) and the River Rott (Germany, Chang and Steinberg 1988). Lehman
7 (2000) found that *S. potamos* commonly occurs in the southern Delta of San Francisco Bay
8 Estuary during summer, when salinity is high from discharge of agricultural return water and
9 the seasonal peak in water temperature is increased by long residence time. Kaeriyama et al.
10 (2011) showed that the occurrence of seven *Skeletonema* species was mainly affected by
11 water temperature and less by irradiance in Dokai Bay (Japan). Under experimental
12 conditions, *Skeletonema* species were able to grow at temperatures ranging from 15 to 25 °C
13 (Kaeriyama et al. 2011).

14 Effect of global warming was observed also on other Thalassiosirales species in the
15 River Danube. A shift in the timing of the end-winter centric bloom, in which *Stephanodiscus*
16 *minutulus* (Kützing) Cleve et Möller is one of the dominant species was reported (Kiss and
17 Genkal 1997; Kiss 2000). It usually occurs 3-4 weeks earlier in the 2000s than in the 1980s.
18 Several papers predict earlier maxima in algal biomass related to climate change, which is
19 generally accompanied by biomass increase (Flanagan et al. 2003; Sipkay et al. 2012),
20 especially in spring (Dokulil et al. 2010; Nöges et al 2010; Sipkay et al. 2009; Thackeray et
21 al. 2008).

22 *S. potamos* also occurs in the River Tisza in the region, where it is exposed to similar
23 climatic effects as in the River Danube. One might therefore expect *S. potamos* to be similarly
24 abundant in both rivers. However, the high light demand of *S. potamos* might limit its
25 abundance in the River Tisza, which has higher overall levels of suspended matter throughout

1 the year compared to the River Danube (Istvánovics et al. 2010). This supposition needs more
2 study, though relationship between light and *S. potamos* abundance had been shown in other
3 aquatic ecosystems. In the Paraná River System, a positive correlation between the abundance
4 and biovolume of the functional group D (containing *S. potamos*) with Secchi transparency
5 was found, which is influenced by water currents through transported suspended material
6 (Devercelli 2006; Devercelli and O'Farrell 2013). Torgan et al. (2009) supposed that the main
7 factors influencing the development of *S. potamos* populations are probably light and/or
8 competition with other chain-forming centric diatoms (*Aulacoseira granulata* and *A.*
9 *ambigua*) whose species were abundant in the phytoplankton of the Patos lagoon (Brazil). The
10 competition of these *Aulacoseira* taxa is not relevant in the River Danube and Tisza, because
11 they are much less abundant here.

12 In our earlier studies (Kiss et al. 1994; Sipkay et al. 2012; Verrasztó et al. 2010) we
13 clearly demonstrated that there is an intra-annual effect of water discharge of the River
14 Danube on the quantity of *S. potamos*. In our present study, we focused on long-term changes
15 and found that water discharge was not significantly related to the relative abundance of the
16 species. However, it was significant in the case of relative carbon biomass. The River Danube
17 exhibited a gradual decrease in mean water discharge during the last decades (Fig.4D),
18 parallel to the increase in *S. potamos* dominance. While this trend can have indirect positive
19 influences on the quantity of *S. potamos*, (e.g. via more favourable light conditions), we
20 suggest that its effect is secondary as water temperature was clearly the predominant factor in
21 explaining its dominance (i.e. being significant or showing stronger effect in the linear mixed-
22 effects models).

23 According to our results, *S. potamos* undoubtedly became the dominant member of
24 phytoplankton of River Danube in warm water period and its seasonal dominance was also
25 observed in other freshwater lakes (e.g. Postmünster Lake, Chang and Steinberg 1988), rivers

1
2
3
4
5
6
7
8
9
10
11
12
13
14
15
16
17
18
19
20
21
22
23
24
25
26
27
28
29
30
31
32
33
34
35
36
37
38
39
40
41
42
43
44
45
46
47
48
49
50
51
52
53
54
55
56
57
58
59
60
61
62
63
64
65

(e.g. River Rhine, Friedrich and Pohlman 2009; Ibelings et al. 1998) and estuaries (e.g. Chesapeake Bay, Marshall and Egerton 2009). The consequences of this shift are hard to predict because of the lack of knowledge on the ecology of this species. However, *Skeletonema* spp. are known to be bloom-forming taxa, sometimes contributing to close to monodominant phytoplankton communities (Borkman and Smayda 2009; Rost et al. 2003) due to their high growth potential when silica is not limiting, which can make them superior competitors over other microalgae (Egge and Aksnes 1992). Moreover, *Skeletonema* species were found to negatively affect zooplankton either via mechanical interference with the filtering process of cladocerans (Müller-Solger et al. 2002) or by suppressing hatching success of eggs in some of the copepod consumers (Ban et al. 1997; Miralto et al. 1999). Considering these, the dominance of *S. potamos* in the phytoplankton may have serious consequences on the trophic web, and hence, energy flow in its habitats. Therefore, further studies on its position in nutrient cycling are mandatory. Especially because the species seems to be favoured by the warming of surface waters and can accordingly become dominant in its present habitats and its further expansion can also be expected.

Conclusions

Skeletonema potamos is a species with temperate zone distribution (Fig. 1), where it occurs in a wide variety of low-salinity (mostly freshwater) habitats. *Skeletonema subsalsum*, occurring mainly in brackish waters, proved to be the closest relative of *S. potamos* and marine *Skeletonema* species were more distant relatives. We found little or no sequence variation in *S. potamos* populations from Central Europe, the continental United States, and very likely Japan. Small and large subunit ribosomal RNA genes are variable within other *Skeletonema* species (Alverson and Kolnick 2005; Sarno et al. 2005, 2007), suggesting relatively recent

1 dispersal of *S. potamos* across the globe. Previous studies reported it as a warm stenotherm
2 species (Devercelli and O'Farrell 2013; Kiss et al. 1994), which is consistent with our 30-year
3 dataset from the River Danube, showing that the species is present from late spring until
4 autumn in the temperate zone (Belcher and Swale 1978; Chang and Steinberg 1988; Kiss and
5 Nausch 1988; Steinberg et al. 1987). Moreover, its proportion in total phytoplankton
6 abundance and biomass increased during our long-term investigation in the River Danube,
7 parallel with a gradual increase of water temperature. In the light of these data, we predict that
8 the geographic and/or seasonal range of *S. potamos* will expand with the warming of surface
9 waters in response to global climate change.
10
11
12
13
14
15
16
17
18
19
20
21
22
23

24 **Methods**

25
26
27
28
29 **Environmental sampling and analysis:** Since 1979, weekly samples for regular
30 phytoplankton analyses were taken from the River Danube at Göd (riv. km 1669), Central
31 Hungary. Half-litre dipped samples were taken from the main current, 20–30 cm below the
32 water surface and preserved in Lugol's iodine solution. Quantitative investigations were made
33 by inverted microscope (Olympus IX70 and Opton invertoscope D) according to the
34 Utermöhl (1958) method.
35
36
37
38
39
40
41
42

43 To establish the biomass (wet weight) in each sample, the diameter (d) and the length
44 (l) of the perivalvar axis of *S. potamos* specimens (n=50) were measured (to calculate the cell
45 volume: $r^2 \cdot \pi \cdot l$; $r = d/2$) and multiplied by cell number (Utermöhl 1958). In samples containing
46 less than 1000 ind. mL⁻¹, fewer than 50 specimens were measured. The biovolume was
47 converted into carbon content according to Menden-Deuer and Lessard (2000).
48
49
50
51
52
53
54
55

56 **Environmental parameters:** Samples were taken from the upper 20 cm of the water.
57 Water temperature (T) was measured *in situ* with a WTW multiline portable meter. Total
58
59
60
61
62
63
64
65

1 suspended solids (TSS) concentration was determined gravimetrically (Eaton et al. 2005). The
2 pore size of the membrane filter was 0.45 μm . Ammonium (NH_4^+) was measured according to
3 the ISO 7150-1:1984. Nitrate (NO_3^-) was measured by the sodium salicylate method
4 (Vijayasathya 2011). Orthophosphate (SRP) was measured according to the Eaton et al.
5 (2005) by the ammonium molybdate method. Chemical oxygen demand (CODps) was
6 determined with the acidic potassium permanganate method (ISO 8467 1993). Chlorophyll-*a*
7 concentration (chl-*a*) was determined spectrophotometrically, after extraction with hot
8 methanol (Iwamura et al. 1970). Water discharge (WD) data were provided by the General
9 Directorate of Water Management.

10
11
12
13
14
15
16
17
18
19
20
21
22 **Morphological analysis of *Skeletonema potamos*:** The samples taken from the River
23 Danube (in parallel with quantitative phytoplankton analysis) were fixed with formaldehyde,
24 and treated with cold H_2O_2 and HCl (CEN 2003), washed in distilled water, filtered through a
25 3 μm -mesh polycarbonate membrane, fixed on SEM stubs, coated with gold-palladium and
26 investigated with a Hitachi S-2600N scanning electron microscope. Subsamples of the treated
27 material were also used for TEM analysis; a TESLA BS500 transmission electron microscope
28 was used for this purpose.

29
30
31
32
33
34
35
36
37
38
39 **DNA analysis:** For DNA analyses, living samples were collected from three locations:
40 (1) the River Danube at Göd, Hungary (47°40'51"N 19°7'33"E), in June 2011, (2) the River
41 Tisza at Tiszaújváros, Hungary (47°54'32"N 21°4'45"E), in August 2012.

42
43
44
45
46 From the River Danube, *S. potamos* cells (around 20 two-celled chains) were isolated
47 using micropipette under inverted microscope (Olympus IX70) and transferred into sterile 100
48 μL TE buffer (10mM Tris, 1 mM $\text{Na}_2\text{-EDTA}$, pH=8). Taking into account the advantage
49 derived from the fragility of the weakly-silicified frustules of *Skeletonema*, the isolated cells
50 were only centrifuged at 20,000 *g* for 5 min that could release DNA from the cells. 50 μL
51 pellet was used for the polymerase chain reaction. Because of the low number of the cells and
52
53
54
55
56
57
58
59
60
61
62
63
64
65

1 the consequently low concentration of extracted DNA, polymerase chain reaction (PCR) was
2 applied in seminested design or a second PCR was performed with the same primers.
3

4 *Skeletonema potamos* was rare in the River Tisza samples, so total community DNA
5 was extracted from a field sample. The sample was mixed with lysis buffer (10mM Tris, 1
6 mM Na₂-EDTA, 200mM NaCl, 0.02% SDS, pH=8), frozen at -20 °C for 30 min, heated at 95
7 °C for 10 min, then centrifuged at 14000g for 10 min. Proteins were digested with Proteinase
8 K (recombinant, Fermentas) at 56 °C for 3 h. DNA was then isolated using the DNeasy®
9 Plant Mini Kit (Qiagen).
10
11
12
13
14
15
16
17

18 Publicly available *Skeletonema* sequences were used to design primers for PCR
19 amplification and sequencing of nuclear SSU and partial LSU ribosomal DNA genes as well
20 as plastid *rbcL* and *psbC* genes (Table 1). Priming sites were determined using NCBI Primer-
21 BLAST (Ye et al. 2012), and theoretical melting temperature and the possibility of dimer
22 formation was explored using Integrated DNA Technologies Oligo Analyzer.
23
24
25
26
27
28
29
30

31 The four genes were amplified and sequenced with primers listed in Table 1. For PCR
32 design see Supplementary table 2. For 28S rDNA and *psbC* of the Danube sample, the PCR
33 reaction mixture contained 200 mM of each deoxynucleoside triphosphate (Fermentas), 1 U
34 of Taq DNA Polymerase (Fermentas, Vilnius, Lithuania), 1X Taq buffer with (NH₄)₂SO₄
35 (Fermentas), 2 mM MgCl₂ (Fermentas), 0.325 μM of each primer, 0.1 mg/μL BSA
36 (Fermentas) and 1-3 μL template in a total volume of 25 μL. For all other reactions the
37 mixture contained 1.25 U DreamTaq™ DNA Polymerase (Thermo Scientific), 200 mM of
38 each deoxynucleoside triphosphate (Fermentas), 1X DreamTaq Buffer (Thermo Scientific),
39 0.325 μM of each primer, 1-3 μL template in a total volume of 25 μL. PCR amplifications
40 used the following cycles: initial denaturation at 98 °C for 3 min, 32 cycles at 94 °C for 1 min,
41 52–63 °C (the exact annealing temperature for each primer pair was determined by gradient
42 PCR, see Supplementary Material Table S2) for 30 sec, 72 °C for 1.5 min, and a final
43
44
45
46
47
48
49
50
51
52
53
54
55
56
57
58
59
60
61
62
63
64
65

1 extension at 72 °C for 10 min. Sequencing reactions and capillary electrophoreses were
2 performed by Biomi Ltd. All nucleotide sequences are available from the
3
4 DDBJ/EMBL/GenBank databases under accession numbers KF621297–KF621302.
5

6
7 Sequences were compared to those ones (accession numbers KJ081744–KJ081747) that were
8
9 provided by Andrew J. Alverson. These were acquired from a sample taken from Missouri
10
11 River, United States (38°46'42"N 90°28'48"W) in 2012.
12
13

14 **Phylogenetic analysis:** The final sequences were assembled from overlapping
15
16 sequence fragments. Sequences were downloaded from GenBank from the studies of
17
18 Alverson and Kolnick (2005), Sarno et al. (2005, 2007), Alverson et al. (2007), Kooistra et al.
19
20 (2008), Alverson (2014) and one 18S rDNA (accession number AB728775.1, Yamada et al.
21
22 unpublished) and one 28S rDNA sequence (accession number AB728772.1, Yamada et al.
23
24 (2013). For all accession numbers see Supplementary Table S3 and Supplementary Material
25
26 Figs S3, S4. Sequences were aligned with ClustalW implemented in MEGA 5.05 (Tamura et
27
28 al. 2011). “Find best DNA models” option in this software was used to determinate the most
29
30 appropriate model for DNA sequence evolution of each gene partition (models are
31
32 summarized in Table 2). Bayesian analyses were run on datasets individually and in
33
34 combination. Posterior probability of distribution was estimated using Metropolis-coupled
35
36 Markov Chain Monte Carlo (MCMC) as implemented in MrBayes 3.2 (Ronquist et al. 2012).
37
38 Default priors were used for all analyses.
39
40
41
42
43
44

45 **Statistical analyses:** To investigate the role of local environmental effects in the River
46
47 Danube, we used only warmer period (May–October) data, because the occurrence of *S.*
48
49 *potamos* is restricted to this period in the River Danube. As total phytoplankton abundance
50
51 and biomass showed a decreasing trend in the last decades (Verasztó et al. 2010) and the same
52
53 is true for the absolute abundance and biomass of *S. potamos*, we used the relative abundances
54
55 of the species in our analysis. To normalise residuals, we transformed chlorophyll-*a* data by
56
57
58
59
60
61
62
63
64
65

1 cubic root and water discharge, TSS and NH_4^+ by square root. We built a PCA model for the
2 trophic variables of NH_4^+ , NO_3^- , SRP, CODps and chl-*a*. We used PCA 1 and PCA 2 axes in
3
4 the subsequent analyses as proxies for trophic state and nutrient availability. We fitted linear
5
6 mixed-effects models on relative *S. potamos* abundance and biomass in the package "nlme" in
7
8 R (Pinheiro et al. 2013; R Development Core Team 2010), wherein water discharge,
9
10 temperature, TSS, PCA 1 and PCA 2 axes were fixed effects, and year and month were
11
12 random effects.
13
14

15
16 The world distribution map of *S. potamos* was prepared by using the ESRI ArcInfo 9.3
17
18 GIS program based on sites listed in Supplementary Material Table S1.
19
20
21
22
23
24
25

26 **Acknowledgements**

27
28 We thank Angéla Földi for helping in the preparation of the distribution map, Andrew J.
29
30 Alverson for providing sequences from the Missouri, Bánk Beszteri for his valuable advice on
31
32 the work. The authors also thank two anonymous reviewers for their useful comments on the
33
34 manuscript. This study was supported by the Hungarian National Science Foundation (KTIA-
35
36 OTKA 80140).
37
38
39
40
41
42
43

44 **Appendix A. Supplementary Data**

45
46 Supplementary data associated with this article.
47
48
49
50

51 **References**

52
53
54 **Aké Castillo J, Meave Del Castillo ME, Hernández-Becerril DU (1995)** Morphology and
55
56 distribution of species of the diatom genus *Skeletonema* in a tropical coastal lagoon. Eur J
57
58 Phycol **30**:107–115
59
60
61
62
63
64
65

1 **Alverson AJ** (2014) Timing marine-freshwater transitions in the diatom order

2 Thalassiosirales. *Paleobiology* **40**:91–101

3
4
5
6
7 **Alverson AJ, Kolnick L** (2005) Intragenomic nucleotide polymorphism among small subunit
8
9 (18S) rDNA paralogs in the diatom genus *Skeletonema* (Bacillariophyta). *J Phycol* **41**:1248–
10
11 1257

12
13
14
15
16 **Alverson AJ, Jansen RK, Theriot EC** (2007) Bridging the Rubicon: Phylogenetic analysis
17
18 reveals repeated colonizations of marine and fresh waters by thalassiosiroid diatoms. *Mol*
19
20 *Phylogenet Evol* **45**:193–210

21
22
23
24
25
26 **Anneville O, Gammeler S, Straile D** (2002) Phosphorus decrease and climate variability:
27
28 mediators of synchrony in phytoplankton changes among European peri-alpine lakes.
29
30 *Freshwater Biol* **50**:1731–1746

31
32
33
34
35
36 **Anneville O, Molinero JC, Souissi S, Balvay G, Gerdeaux D** (2007) Long-term changes in
37
38 the copepod community of Lake Geneva. *J Plankton Res* **29**:49–59

39
40
41
42
43 **Ban S, Burns C, Castel J, Chaudron Y, Christou E, Escribano R, Umani SF, Gasparini**
44
45 **S, Ruiz FG, Hoffmeyer M, Ianora A, Kang H, Laabir M, Lacoste A, Miralto A, Ning X,**
46
47 **Poulet S, Rodriguez V, Runge J, Shi J, Starr M, Uye S, Wang Y** (1997) The paradox of
48
49 diatom-copepod interactions. *Mar Ecol Prog Ser* **157**:287–293
50
51
52
53
54
55
56
57
58
59
60
61
62
63
64
65

1 **Belcher JH, Swale EMF** (1978) *Skeletonema potamos* (Weber) Hasle and *Cyclotella atomus*
2 Hustedt (Bacillariophyceae) in the plankton of rivers in England and France. *Brit Phycol J*
3
4 **13**:177–182
5
6

7
8
9 **Borkman DG, Smayda T** (2009) Multidecadal (1959–1997) changes in *Skeletonema*
10 abundance and seasonal bloom patterns in Narragansett Bay, Rhode Island, USA. *J Sea Res*
11
12 **61**:84–94
13
14
15

16
17
18
19 **Cavalcante KP, Tremarin PI, Ludwig TAV** (2013) Taxonomic studies of centric diatoms
20 (Diatomeae): unusual nanoplanktonic forms and new records for Brazil. *Acta Bot Bras*
21
22 **27**:237–251
23
24
25

26
27
28
29 **CEN** (2003). Water quality - Guidance standard for the routine sampling and pretreatment of
30 benthic diatoms from rivers. European Standard EN 13946. European Committee for
31
32 Standardization, Brussels
33
34
35

36
37
38
39 **Chang T-P, Steinberg C** (1988) Seasonal changes in the diatom flora in a small reservoir
40 with special reference to *Skeletonema potamos*. *Diatom Res* **3**:191–201
41
42
43

44
45
46 **Daugbjerg N, Andersen RA** (1997) A molecular phylogeny of the heterocokont algae based
47 on analyses of chloroplast-encoded *rbcL* sequence data. *J Phycol* **33**:1031–1041
48
49
50

51
52
53 **Desortová B, Havel L, Št'astný J** (2011) Živiny, fytoplankton a zooplankton ve střední části
54 Českého Úseku Labe: Stav v období 1996–1999 a 2006–2009 [Nutrients, phytoplankton and
55 zooplankton in the middle part of the Czech Elbe stretch: state in the period 1996–1999 and
56
57
58
59
60
61
62
63
64
65

2006–2009]. *Vodohospodářské Technicko–Ekonomické Informace* **53**:1–4 (in Czech with English title translation)

Devercelli M (2006) Phytoplankton of the Middle Paraná River during an anomalous hydrological period: a morphological and functional approach. *Hydrobiologia* **563**:465–478

Devercelli M, O’Farrell I (2013) Factors affecting the structure and maintenance of phytoplankton functional groups in a nutrient rich lowland river. *Limnologia* **43**:67–78

Descy J-P, Leitao M, Everbecq E, Smitz JS, Deliège J-F (2012) Phytoplankton of the River Loire, France: a biodiversity and modelling study. *J Plankton Res* **34**:120–135

Dokulil MT, Teubner K, Jagsch A, Nickus U, Adrian R, Starile D, Jankowski T, Herzig A, Padisák J (2010) The Impact of Climate Change on Lakes in Central Europe. In George DG (ed) *The Impact of Climate Change on European Lakes*. Springer, Dordrecht, pp 411-436

Eaton AD, Clesceri LS, Rice EW, Greenberg AE (eds) (2005) *Standard Methods for the Examination of Water and Wastewater* (21st ed.), APHA, AWW, WEF, Washington, DC, USA

Egge JK, Aksnes DL (1992) Silicate as regulating nutrient in phytoplankton competition. *Mar Ecol Progr Ser* **83**:281–289

- 1
2
3
4
5
6
7
8
9
10
11
12
13
14
15
16
17
18
19
20
21
22
23
24
25
26
27
28
29
30
31
32
33
34
35
36
37
38
39
40
41
42
43
44
45
46
47
48
49
50
51
52
53
54
55
56
57
58
59
60
61
62
63
64
65
- Ettl H, Gerloff J, Heynig H** (1986) Bacillariophyceae 1. Teil: Naviculaceae. 1–876. In Krammer K, Lange-Bertalot H (eds) Süßwasserflora von Mitteleuropa Band 2/1. VEB Gustav Fischer Verlag, Jena, Germany
- Flanagan KM, McCauley E, Wrona F, Prowse T** (2003) Climate change: the potential for latitudinal effects on algal biomass in aquatic ecosystems. *Can J Fish Aquat Sci* **60**:635–639
- Floury M, Delattre C, Ormerod SJ, Souchon Y** (2012) Global versus local change effects on a large European river. *Sci Total Environ* **441**:220–229
- Friedrich G, Pohlman M** (2009) Long-term plankton studies of the lower Rhine/Germany. *Limnologica* **39**:14–39
- Gibson CE, McCall RD, Dymond A** (1993). *Skeletonema subsalsum* in a freshwater Irish lake. *Diatom Res* 8:65-71
- Hampton S, Izemet'eva LR, Moore MV, Katz SL, Dennis B, Silow EA** (2008) Sixty years of environmental change in the world's largest freshwater lake – Lake Baikal, Siberia. *Glob Change Biol* **14**:1947–1958
- Hasle GR, Evensen DL** (1975) Brackish water and freshwater species of the diatom genus *Skeletonema*. Grev. 1. *Skeletonema subsalsum* (A. Cleve) Bethge. *Eur J Phycol* **14**:283–297
- Hasle GR, Evensen DL** (1976) Brackish water and freshwater species of the diatom genus *Skeletonema*. II. *Skeletonema potamos* comb. nov. *J Phycol* **12**:73–82

1
2 **Hustedt F** (1928) Die Kieselalgen Deutschlands, Österreichs und der Schweiz unter
3
4 Berücksichtigung der übrigen Länder Europas sowie der angrenzenden Meeresgebiete. In
5
6 Rabenhorst L (ed) Kryptogamen Flora von Deutschland, Österreich und der Schweiz.
7
8 Akademische Verlagsgesellschaft m.b.h. Leipzig, **7** (Teil 1, Lief. 2), pp 273–464
9

10
11
12
13
14 **Hustedt F** (1957) Die Diatomeenflora des Flußsystems der Weser im Gebiet der Hansestadt
15
16 Bremen. Abh naturwVer Bremen **34**: 181–440
17
18

19
20
21 **Ibelings B, Admiraal W, Bijkerk R, Ietswaart T, Prins H** (1998) Monitoring of algae in
22
23 Dutch rivers: Does it meet its goal? J Appl Phycol **10**:171–181
24
25
26

27
28
29 **ISO 7150-1** (1984) Water quality – Determination of Ammonium – Part 1: Manual
30
31 Spectrometric Method
32
33

34
35
36 **ISO 8467** (1993) Water quality – Determination of Permanganate Index
37
38
39

40
41 **Istvánovics V, Honti M, Vörös L, Kozák Zs** (2010) Phytoplankton dynamics in relation to
42
43 connectivity, flow dynamics and resource availability – the case of a large lowland river, the
44
45 Hungarian Tisza. Hydrobiologia **637**:121–141
46
47
48

49
50
51 **Iwamura T, Nagai H, Ichimura S** (1970) Improved methods for determining contents of
52
53 chlorophyll, protein, ribonucleic acid and deoxyribonucleic acid in planktonic populations.
54
55 Int. Rev. Ges. Hydrobiol. **55**: 31-147
56
57
58
59
60
61
62
63
64
65

1 **Kaeriyama H, Katsuki E, Otsubo M, Yamada M, Ichimi K, Tada T, Harrison PJ** (2011)

2 Effects of temperature and irradiance on growth of strains belonging to seven *Skeletonema*
3 species isolated from Dokai Bay, southern Japan. *Eur J Phycol* **46**:113–124
4
5
6

7
8
9 **Kiss KT** (1985) Changes of trophity conditions in the River Danube at Göd. *Danubialia*
10 *Hungarica* XCIV. *Annal Univ Sci Budapest Sect Biol* **24–26**:47–59
11
12
13

14
15
16 **Kiss KT** (1986) Species of the Thalassiosiraceae in the Budapest Section of the Danube.

17
18
19 Comparison of Samples Collected in 1956-63 and 1979-83. In Ricard M (ed) *Proceedings of*
20 *the Eight International Diatom Symposium, Paris, August 27 – September 1, 1984*. Koeltz
21 Scientific Books, Koenigstein, pp 23–31
22
23
24

25
26
27
28 **Kiss KT** (2000) Has the trophic level of the River Danube increased as an effect of the
29 Gabčíkovo (Bős) barrage? *Hidrol Közlöny* **80**:316-318. [in Hungarian with English summary]
30
31
32

33
34
35 **Kiss KT, Genkal SI** (1997) Late winter - early spring bloom of centric diatoms in the River
36 Danube at Göd (1996). - *Hidrol. Közlöny* **77**: 57–58. [in Hungarian with English summary]
37
38
39

40
41
42 **Kiss KT, Nausch M** (1988) Comparative Investigations of Planktonic Diatoms of Section
43 of the Danube near Vienna and Budapest. In Round FE (ed), *Proceedings 9th International*
44 *Diatom Symposium, Biopress, Bristol*, pp 115–122
45
46
47

48
49
50
51
52 **Kiss KT, Ács É, Kovács A** (1994) Ecological observations on *Skeletonema potamos* (Weber)
53 Hasle in the River Danube, near Budapest (1991-92, daily investigations). *Hydrobiologia*
54
55
56
57 **289**:163–170
58
59
60
61
62
63
64
65

1
2 **Kiss KT, Klee R, Ector L, Ács É** (2012) Centric diatoms of large rivers and tributaries in
3 Hungary: morphology and biogeographic distribution. *Acta Bot Croat* **71**:311–363
4
5

6
7 **Kooistra WH, Sarno D, Balzano S, Andersen RA, Zingone A** (2008) Global diversity and
8 biogeography of *Skeletonema* species (Bacillariophyta). *Protist* **159**:177–193
9
10

11
12
13
14 **Lehman PW** (2000) The influence of climate on phytoplankton community biomass in San
15 Francisco Bay Estuary. *Limnol Oceanogr* **45**:580–590
16
17

18
19
20
21 **Marshall HG, Egerton TA** (2009) Phytoplankton blooms: their occurrence and composition
22 within Virginia's tidal tributaries. *Va J Sci* **60**:149–164
23
24

25
26
27
28 **Medlin L, Kaczmarska I** (2004) Evolution of the diatoms: V. Morphological and cytological
29 support for the major clades and a taxonomic revision. *Phycologia* **43**:245–270
30
31

32
33
34
35
36 **Medlin L, Elwood HJ, Stickel S, Sogin ML** (1988) The characterization of enzymatically
37 amplified eukaryotic 16S-like rRNA-coding regions. *Gene* **71**:491–499
38
39

40
41
42
43 **Menden-Deuer S, Lessard EJ** (2000) Carbon to volume relationships for dinoflagellates,
44 diatoms, and other protist plankton. *Limnol Oceanogr* **45**:569–79
45
46

47
48
49
50
51 **Mills EL, Leach JH, Carlton JT, Secor CL** (1993) Exotic species in the Great Lakes: A
52 history of biotic crises and anthropogenic introductions. *J Great Lakes Res* **19**:1–54
53
54

1
2
3
4
5
6
7
8
9
10
11
12
13
14
15
16
17
18
19
20
21
22
23
24
25
26
27
28
29
30
31
32
33
34
35
36
37
38
39
40
41
42
43
44
45
46
47
48
49
50
51
52
53
54
55
56
57
58
59
60
61
62
63
64
65

Miralto A, Barone G, Romano G, Poulet SA, Ianora A, Russo GL, Buttino I, Mazzarella G, Laabir M, Cabrini M, Giacobbe MG (1999) The insidious effect of diatoms on copepod reproduction. *Nature* **402**:173–176

McQuoid MR, Hobson LA (1995) Importance of resting stages in diatom seasonal succession. *J Phycol* **31**:44–50

Müller-Solger AB, A. Jassby D, Müller-Navarra DC (2002) Nutritional quality of food resources for zooplankton (*Daphnia*) in a tidal freshwater system (Sacramento-San Joaquin River Delta). *Limnol Oceanogr* **47**:1468–1476

Nehring S (1998) Establishment of thermophilic phytoplankton species in the North Sea: biological indicators of climatic changes? *ICES J Mar Sci* **55**:818–823

Nöges P, Adrian R, Anneville O, Arvola L, Blenckner T, George G, Jankowski T, Järvinen M, Maberly S, Padisák J, Starile D, Teubner K, Thackeray S (2010) The Impact of Variations in the Climate on Seasonal Dynamics of Phytoplankton. In George DG (ed) *The Impact of Climate Change on European Lakes*. Springer, Dordrecht, pp 275-292

Paerl HW, Paul VJ (2012) Climate change: Links to global expansion of harmful cyanobacteria. *Water Res* **46**:1349–1363

Pinheiro J, Bates D, DebRoy S, Sarkar D and the R Development Core Team (2013) nlme: Linear and Nonlinear Mixed Effects Models. R package version 3.1-113

1
2
3
4
5
6
7
8
9
10
11
12
13
14
15
16
17
18
19
20
21
22
23
24
25
26
27
28
29
30
31
32
33
34
35
36
37
38
39
40
41
42
43
44
45
46
47
48
49
50
51
52
53
54
55
56
57
58
59
60
61
62
63
64
65

Ronquist F, Teslenko M, van der Mark P, Ayres DL, Darling A, Höhna S, Larget B, Liu L, Suchard MA, Huelsenbeck JP (2012) MrBayes 3.2: Efficient Bayesian phylogenetic inference and model choice across a large model space. *Syst Biol* **61**:539–542

Rost B, Riebesell U, Burkhardt S, Sültemeyer D (2003) Carbon acquisition of bloom-forming marine phytoplankton. *Limnol Oceanogr* **48**:55–67

Round FE, Crawford RM, Mann DG (1990) *The Diatoms: Biology and Morphology of the Genera*. Cambridge University Press, Cambridge, UK, 747 p

R Development Core Team (2010) R: a language and environment for statistical computing. R Foundation for Statistical Computing, Vienna. Available at <http://www.R-project.org>

Ryan EF, Hamilton DP (2003) Recent occurrence of *Cylindrospermopsis raciborskii* in Waikato lakes of New Zealand. *New Zeal J Mar Freshw* **37**:829–836

Sarno D, Kooistra WHCF, Balzano S, Hargraves PE, Zingone A (2007) Diversity in the genus *Skeletonema* (Bacillariophyceae): III. Phylogenetic position and morphological variability of *Skeletonema costatum* and *Skeletonema grevillei*, with the description of *Skeletonema ardens* sp. nov. *J Phycol* **43**:156–170

Sarno D, Kooistra WHCF, Medlin LK, Percopo I, Zingone A (2005) Diversity in the genus *Skeletonema* (Bacillariophyceae). II. An assessment of the taxonomy of *S. costatum*-like species with the description of four new species. *J Phycol* **41**:151–176

1
2
3
4
5
6
7
8
9
10
11
12
13
14
15
16
17
18
19
20
21
22
23
24
25
26
27
28
29
30
31
32
33
34
35
36
37
38
39
40
41
42
43
44
45
46
47
48
49
50
51
52
53
54
55
56
57
58
59
60
61
62
63
64
65

Sipkay Cs, Kiss KT, Drégelyi-Kiss Á., Farkas E, Hufnágel L (2009) Analysis of climate change scenarios based on the modeling of the seasonal dynamics of phytoplankton in the Danube. *Hidrol Közlöny* **89**:56–58 [in Hungarian with English summary]

Sipkay Cs, Kiss KT, Vadadi-Fülöp Cs, Homoródi R, Hufnagel L (2012) Simulation modeling of phytoplankton dynamics in a large eutrophic river, Hungary - Danubian Phytoplankton Growth Model (DPGM). *Biologia (Section Botany)* **67**:323–337

Sommer U, Adrian R, Bauer B, Winder M (2012) The response of temperate aquatic ecosystems to global warming: novel insights from a multidisciplinary project. *Mar Biol* **159**:2367–2377

Steinberg C, Heindel B, Tille-Backhaus R, Klee R (1987) Phytoplanktonstudien an langsamfließenden Gewässern: Donau und Vils. *Arch Hydrobiol Suppl* 68, Veröff Arbeitsg Donauforsch **7**:437-456

Stüken A, Rütke J, Endrulat T, Preussel K, Hemm M, Nixdorf B, Karsten U, Wiedner C (2006) Distribution of three alien cyanobacterial species (Nostocales) in northeast Germany: *Cylindrospermopsis raciborskii*, *Anabaena bergii* and *Aphanizomenon aphanizomenoides*. *Phycologia* **45**: 696–703

Tamura K (1992) Estimation of the number of nucleotide substitutions when there are strong transition-transversion and G+C-content biases. *Mol Biol Evol* **9**:678–687

1
2 **Tamura K, Nei M** (1993) Estimation of the number of nucleotide substitutions in the control
3 region of mitochondrial DNA in humans and chimpanzees. *Mol Biol Evol* **10**:512–526
4
5

6
7 **Tamura K, Peterson D, Peterson N, Stecher G, Nei M, Kumar S** (2011) MEGA5:
8
9 Molecular evolutionary genetics analysis using maximum likelihood, evolutionary distance,
10 and maximum parsimony methods. *Mol Biol Evol* **28**:2731–2739
11
12
13

14
15
16
17 **Tavaré S** (1986) Some probabilistic and statistical problems in the analysis of DNA
18 sequences. *Lectures Math Life Sci* **17**:57–86
19
20
21

22
23
24 **Thackeray SJ, Jones ID, Maberly SC** (2008) Long-term change in the phenology of spring
25 phytoplankton: species-specific responses to nutrient enrichment and climatic change. *J Ecol*
26
27 **96**:523–535
28
29
30

31
32
33
34 **Torgan LC, Becker V, Bahi dos Santos C** (2009) *Skeletonema potamos* (Bacillariophyta) in
35 Patos Lagoon, southern Brazil: Taxonomy and distribution. *Rev Peru Biol* **16**:93–96
36
37
38

39
40
41 **Utermöhl H** (1958) Zur Vervollkommnung der quantitativen Phytoplankton-Methodik. *Mitt*
42 *Internat Verein Limnol* **9**:1–38
43
44
45

46
47
48 **Verasztó Cs, Kiss KT, Sipkay Cs, Gimesi L, Vadadi-Fülöp Cs, Türei D, Hufnagel L**
49
50 (2010) Long-term dynamic patterns and diversity of phytoplankton communities in a large
51 eutrophic river (the case of River Danube, Hungary). *Appl Ecol Environ Res* **8**:329–349
52
53
54
55
56
57
58
59
60
61
62
63
64
65

1 **Vijayarathy PR** (2011) Engineering Chemistry (2nd ed.). PHI Learning Private Ltd., New
2 Delhi. 310 p
3

4
5
6
7 **Weber CI** (1970) A new freshwater centric diatom *Microsiphona potamos* gen. et sp. nov. J
8
9 Phycol **6**:149–153
10

11
12
13
14 **Winder M, Sommer U** (2012) Phytoplankton response to a changing climate. Hydrobiologia
15
16 **698**:5–16
17

18
19
20
21 **Yamada M, Otsubo M, Tsutsumi Y, Mizota C, Iida N, Okamura K, Kodama M,**
22
23 **Umehara A** (2013) Species diversity of the marine diatom genus *Skeletonema* in Japanese
24
25 brackish water areas. Fish Sci **79**:923–934
26
27

28
29
30
31 **Ye J, Coulouris G, Zaretskava I, Cutcutache I, Rozen S, Madden TL** (2012) Primer-
32
33 BLAST: A tool to design target-specific primers for polymerase chain reaction. BMC
34
35 Bioinformatics **13**:134
36
37

38
39
40
41 **Zingone A, Percopo I, Sims P, Sarno D** (2005) Diversity in the
42
43 genus *Skeletonema* (Bacillariophyceae). I. A reexamination of *S. costatum* with the
44
45 description of *S. grevillei* sp. nov. J Phycol **41**:140–150
46
47
48
49
50
51
52
53
54
55
56
57
58
59
60
61
62
63
64
65

Table 1. Primers used in this study. ¹ Primers used in the first PCR. ² Primers used in the nested PCR. ^s Primers used as sequencing primers.

Name	Marker	Sequence (5' to 3')	Original reference
Sk-50F ¹	18S rRNA gene	CATGTGTAAGTATAAGATACTT	This study
Sk-600F ^{2,s}	18S rRNA gene	AAATCCCTTATCGAGTATCA	This study
Sk-900F ^s	18S rRNA gene	TTGGTTTGCGAGTCAAAGTA	This study
Sk-1550R ^{1,2,s}	18S rRNA gene	TCTCGGCCAAGGTTATAT	This study
Sk-1850R ^{1,2,s}	18S rRNA gene	TACGGAAACCTTGTTACGACTTCA	This study
Sk-28S-15F ¹	28S rRNA gene	CTAGATTTGGTAGGTGCACTT	This study
Sk-28S-120F ^{2,s}	28S rRNA gene	CCGGAATGAATGTACCTCATCTAT	This study
Sk-28S-860R ^s	28S rRNA gene	CTGTTACTTTTCATTACGCATATCAGT	This study
Sk-28S-1250R ^{1,2,s}	28S rRNA gene	AACCTTCATTTCGACGCCAG	This study
psbC_F ¹	<i>psbC</i>	ACAGGTTTCGCTTGGTGGAGTGG	Alverson et al. (2007), modified
Sk-psbC90F ^{2,s}	<i>psbC</i>	TTTTGGGCTGGTGCAATGATCTT	This study
Sk-psbC890R ^s	<i>psbC</i>	TTGCACCTAAACGTTGATCACG	This study
psbC_R ^{1,2,s}	<i>psbC</i>	CACGACCAGAATGCCACCAGT	Alverson et al. (2007), modified
rbcL66F ^{1,s}	<i>rbcL</i>	TTAAGGAGAAATAAATGTCTCAATCTG	Alverson et al. (2007)
Sk-rbcL90F ^{1,2,s}	<i>rbcL</i>	TGTGATTTATTTGAAGAAGCTT	This study
Sk-rbcL400F ^s	<i>rbcL</i>	ATTA ACTCTCA ACCATTTCATGC	This study
Sk-rbcL975R ^s	<i>rbcL</i>	CAACATCATCACCTAAATAGTG	This study
Sk-rbcL1210R ^{1,2,s}	<i>rbcL</i>	GCTGTATCTGTAGAAGTATAGTCGA	This study
dp7R ^{1,s}	<i>rbcL</i>	AAGCAACCTTGTGTAAGTCTC	Daugbjerg and Andersen (1997), modified

Table 2. Substitution models suggested by MEGA5 Find best DNA/protein models function. T93 represents Tamura and Nei' 1993 model, K2 Kimura's two-parameter model, GTR the generalised time-reversible model (for more information on these substitution models see references listed in the third column). Letter G means gamma distributions among sites, letter I means that a proportion of invariable sites was assumed.

Marker	Clade	Substitution model	Reference for substitution model
18S rDNA	Thalassiosirales	T92+G+I	Tamura (1992)
28S rDNA	Thalassiosirales	TN93+G+I	Tamura and Nei (1993)
<i>rbcL</i>	Thalassiosirales	GTR+G+I	Tavaré (1986)
<i>psbC</i>	Thalassiosirales	GTR+G+I	Tavaré (1986)

Table 3. Long-term minimum and maximum values of May-October means of the measured environmental parameters. The corresponding years are given in parentheses.

	Minimum (year)	Maximum (year)
WD (m ³ /L)	1375.88 (2011)	2880.41 (1999)
T (°C)	14.88 (1984)	19.55 (2008)
chl-a (µg/L)	13.58 (2008)	88.52 (1986)
CODps (mg/L)	3.01 (2007)	17.70 (1979)
NH ₃ -NH ₄ -N (mg/L)	0.03 (2009)	0.42 (1992)
NO ₃ -N (mg/L)	1.28 (1992)	2.07 (1987)
PO ₄ (µg/L)	8.20 (2005)	88.99 (1989)
TSS (mg/L)	11.72 (2003)	55.76 (1987)

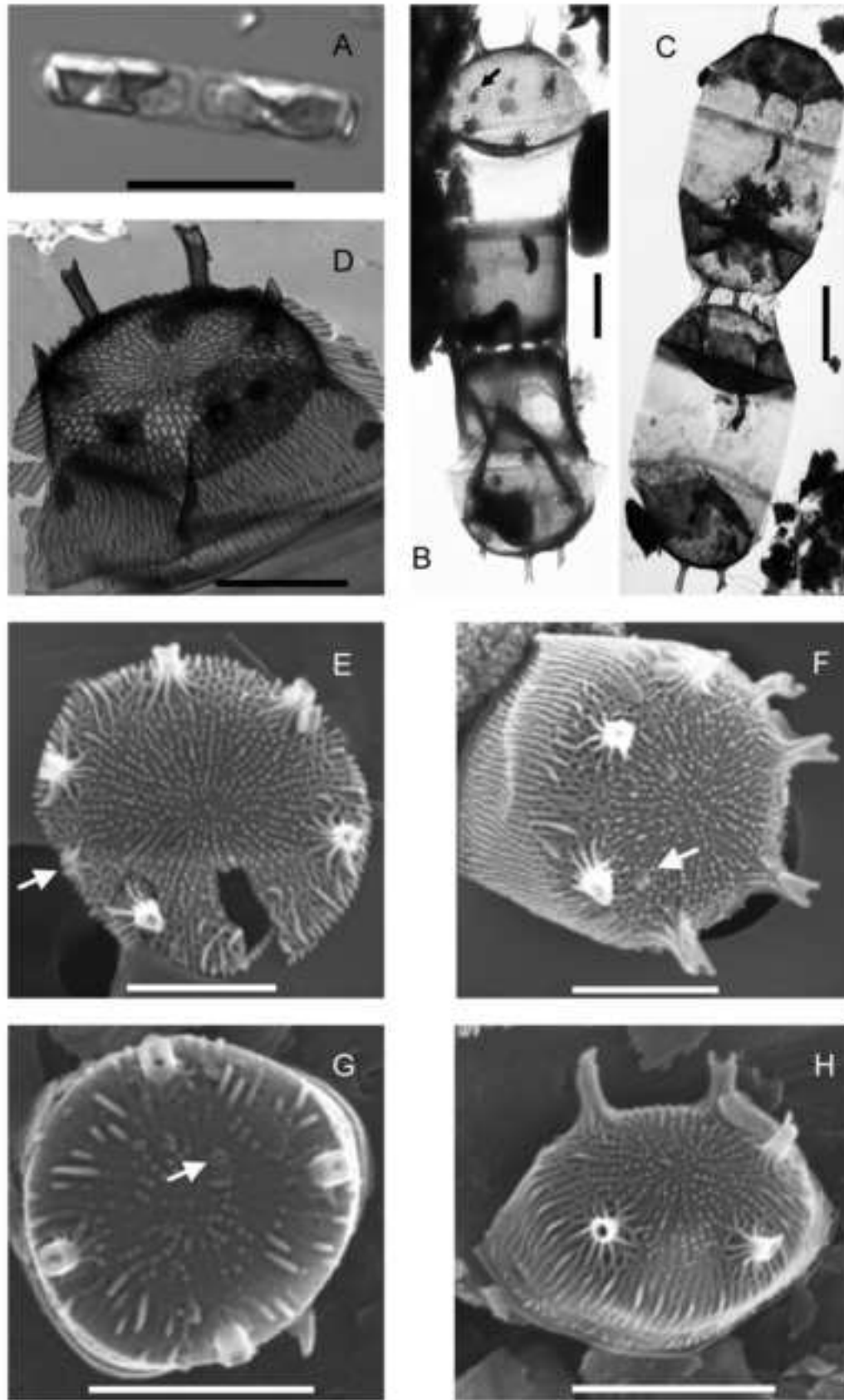
Figure legends

Figure 1. **A:** LM-, **B-D:** TEM-, **E-H:** SEM micrographs of *Skeletonema potamos* from River Danube (**A-F**) and from River Tisza (**G,H**); rimoportula arrowed; scale: 2 μm (**B-G**), 2.5 μm (**H**) and 10 μm (**A**).

Figure 2. Bayesian inferred phylogenetic tree based on 18S and 28S rDNA, *rbcL*, *psbC* sequences of species belonging to order Thalassiosirales. *Ditylum brightwellii*, *Bellerochea malleus* and *Lithodesmium undulatum* are outgroups. Sequences investigated in this study are indicated by underlining. For substitution models see Table 2. Generic abbreviations are: *Bacterosira* (B.), *Bellerochea* (Be.), *Cyclostephanos* (Cs.), *Cyclotella* (Cy.), *Detonula* (D.), *Discostella* (Di.), *Ditylum* (Dt.), *Lauderia* (La.), *Lithodesmium* (Li.), *Minidiscus* (M.), *Porosira* (P.), *Shionodiscus* (Sh.), *Skeletonema* (Sk.), *Stephanodiscus* (S.), *Thalassiosira* (T.)

Figure 3. Map of *Skeletonema potamos* worldwide distribution (for coordinates and references see Supplementary Material Table S1 and Supplementary Material: references). Arrow indicates the type locality of Weber's (1970) description.

Figure 4. Box plot of long-term distribution in proportion of *Skeletonema potamos* in total phytoplankton abundance (**A**) and in total phytoplankton biomass (**B**), the mean water temperature (**C**) and mean water discharge (**D**) from May to October from 1979 to 2012. Water temperature data from the years 2004 and 2012; relative abundance and biomass data from the year 1999 are missing. The boxes represent 50% of the distribution of the values, the bottom of each boxes shows the first quartile, the top shows the third quartile, the black lines within the boxes show the median values, the dots show the outliers. Grey lines show the fitted linear models.



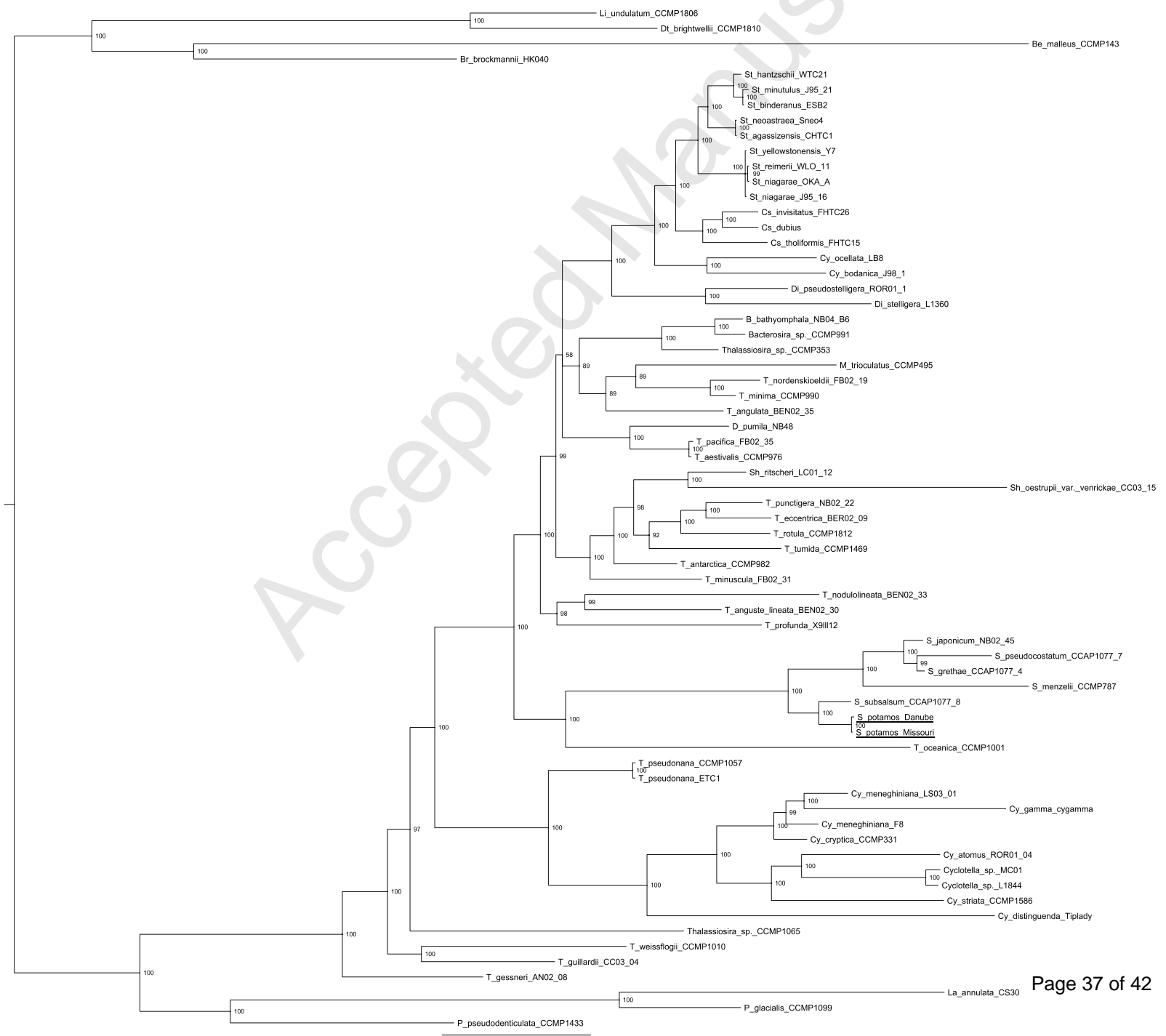


Figure 3

Manuscript

