

Contents lists available at [ScienceDirect](http://www.sciencedirect.com)

Science of the Total Environment

journal homepage: www.elsevier.com/locate/scitotenv

Predicting daily ragweed pollen concentrations using Computational Intelligence techniques over two heavily polluted areas in Europe



Zoltán Csépe^a, László Makra^{a,*}, Dimitris Voukantsis^b, István Matyasovszky^c, Gábor Tusnády^d, Kostas Karatzas^b, Michel Thibaudon^e

^a Department of Climatology and Landscape Ecology, University of Szeged, HU-6701 Szeged, P.O.B. 653, Hungary

^b Department of Mechanical Engineering, Informatics Systems & Applications Group, Aristotle University, P.O. Box 483, GR-54124 Thessaloniki, Greece

^c Department of Meteorology, Eötvös Loránd University, HU-1117 Budapest, Pázmány Péter st. 1/A, Hungary

^d Mathematical Institute of the Hungarian Academy of Sciences, HU-1364 Budapest, P.O.B. 127, Hungary

^e RNSA (Aerobiology Network of France), La Parlière, F-69610 Saint Genis l'Argentièrre, France

HIGHLIGHTS

- For Szeged, MLP and tree-based models, while for Lyon only MLP performs well for predicting pollen concentration.
- When predicting alarm levels, the performance of MLP is the best for both cities.
- When forecasting high pollen episodes, the more complex CI methods prove better for both cities.
- The selection of the optimal method depends on climate, as a function of geographical location and relief.

ARTICLE INFO

Article history:

Received 5 December 2013

Received in revised form 14 January 2014

Accepted 15 January 2014

Available online xxxx

Keywords:

Ragweed pollen

Allergy

Forecasting

Neural networks

Multi-Layer Perceptron

Tree based methods

ABSTRACT

Forecasting ragweed pollen concentration is a useful tool for sensitive people in order to prepare in time for high pollen episodes. The aim of the study is to use methods of Computational Intelligence (CI) (Multi-Layer Perceptron, M5P, REPTree, DecisionStump and MLPRegressor) for predicting daily values of *Ambrosia* pollen concentrations and alarm levels for 1–7 days ahead for Szeged (Hungary) and Lyon (France), respectively. Ten-year daily mean ragweed pollen data (within 1997–2006) are considered for both cities. 10 input variables are used in the models including pollen level or alarm level on the given day, furthermore the serial number of the given day of the year within the pollen season and altogether 8 meteorological variables. The study has novelties as (1) daily alarm thresholds are firstly predicted in the aerobiological literature; (2) data-driven modelling methods including neural networks have never been used in forecasting daily *Ambrosia* pollen concentration; (3) algorithm J48 has never been used in palynological forecasts; (4) we apply a rarely used technique, namely factor analysis with special transformation, to detect the importance of the influencing variables in defining the pollen levels for 1–7 days ahead. When predicting pollen concentrations, for Szeged Multi-Layer Perceptron models deliver similar results with tree-based models 1 and 2 days ahead; while for Lyon only Multi-Layer Perceptron provides acceptable result. When predicting alarm levels, the performance of Multi-Layer Perceptron is the best for both cities. It is presented that the selection of the optimal method depends on climate, as a function of geographical location and relief. The results show that the more complex CI methods perform well, and their performance is case-specific for ≥ 2 days forecasting horizon. A determination coefficient of 0.98 (*Ambrosia*, Szeged, one day and two days ahead) using Multi-Layer Perceptron ranks this model the best one in the literature.

© 2014 Elsevier B.V. All rights reserved.

1. Introduction

Warming of the climate system is obvious, as it is now evident from observations of increases in global average air and ocean temperatures, widespread melting of snow and ice, and rising global average sea level (IPCC, 2013). Recent climate warming is associated with the modification of the distribution areas of plants producing allergenic pollen (Laaidi et al., 2011; Ziska et al., 2011), furthermore, with an earlier

* Corresponding author at: Department of Climatology and Landscape Ecology, University of Szeged, Hungary, PO Box 653, HU-6701 Szeged, Hungary. Tel.: +36 62 544856; fax: +36 62 544624.

E-mail addresses: csepzol@geo.u-szeged.hu (Z. Csépe), makra@geo.u-szeged.hu (L. Makra), voukas@isag.meng.auth.gr (D. Voukantsis), matya@ludens.elte.hu (I. Matyasovszky), tusnady.gabor@renyi.mta.hu (G. Tusnády), kkara@eng.auth.gr (K. Karatzas), michel.thibaudon@wanadoo.fr (M. Thibaudon).

onset (Frei, 2008; Rodríguez-Rajo et al., 2011), an earlier end dates (Stach et al., 2007; Recio et al., 2010), a longer pollen season (Stach et al., 2007; Ariano et al., 2010), an increase in the total annual pollen load (Cristofori et al., 2010; Ariano et al., 2010; Laaidi et al., 2011), as well as an increase of patient number sensitised to pollen throughout the year (Ariano et al., 2010).

The genus of ragweed (*Ambrosia* spp.) comprises 42 species. They are the best known weeds for the most severe and widespread allergies caused by its pollen (Béres et al., 2005). However, in Europe, common ragweed (*Ambrosia artemisiifolia*) is predominant of all *Ambrosia* species (Makra et al., 2005; Bullock et al., 2010; Vinogradova et al., 2010). The most important habitat areas of common ragweed in Europe are the Rhône valley in France (Chauvel et al., 2006; Gladieux et al., 2011), north-western Milan and south Varese (Lombardy, Po River valley) in Italy (Bonini et al., 2012), the Pannonian Plain including Hungary and some parts of Serbia, Croatia, Slovenia, Slovakia and Romania (Kiss and Béres, 2006; Makra et al., 2005), furthermore Ukraine (Rodinkova et al., 2012) and the south-western part of the European Russia (Reznik, 2009).

Several evidences of the association between ragweed pollen counts and ragweed induced pollen allergy have been confirmed in the literature. Based on clinical investigations, pollen of ragweed (*Ambrosia* spp.) is the most important cause of allergy-associated respiratory diseases (Kadocs and Juhász, 2002). Harf and Déchamp (2001) found a steep rise in anti-allergic drug sales (eye drops, nasal spray, oral antihistamines) in July, August and September over an area of high infestation in France. In the Pannonian Plain, about 30% of the Hungarian population has some type of allergy, 65% of them have pollen-sensitivity, and at least 60% of this pollen-sensitivity is caused by *Ambrosia* (Járai-Komlódi, 1998; Makra et al., 2004). Furthermore, in Szeged, 83.7% of the patients were sensitive to *Ambrosia* in 1998–1999 (Kadocs and Juhász, 2000). In addition, due to the recent climate change (D'Amato and Cecchi, 2008; Ziska and Beggs, 2012), pollen counts of *Ambrosia* show a slight increase according to linear trends as moderate warming is favourable for warm-tolerant *Ambrosia* (Makra et al., 2011a).

Common ragweed and its pollen cause serious losses in the economy and several fields of everyday life. The current costs of *A. artemisiifolia* in terms of human health and agriculture were estimated by Bullock et al. (2010) for 40 European countries. All the costs are given in Euros at 2011 prices. The human health impacts were estimated to affect around 4 million people with total estimated medical costs of €2136 million per year. Furthermore, total estimated workforce productivity losses due to *A. artemisiifolia* as high estimates were €529 million. The estimated total costs are valued at €2.665 billion per year (Bullock et al., 2010).

The above-mentioned facts make unavoidable producing ragweed pollen concentration forecasts in order to help sensitised people prepare for days of severe airborne pollen load. Different techniques have been applied for modelling daily *Ambrosia* pollen concentrations. Makra et al. (2011b) developed time-varying nonparametric regression methods that combine regression analysis with the method of summing temperatures (Laaidi et al., 2003). Furthermore Makra and Matyasovszky (2011) introduced time-varying parametric linear and time-varying nonparametric regression models, as well as a time-varying nonparametric median regression model to predict the daily pollen concentration for Szeged in Hungary using previous-day meteorological parameters and the daily pollen concentration. The models were applied to rainy days and non-rainy days, respectively. Matyasovszky and Makra (2011) used a time-varying first order autoregressive [AR(1)] model to describe daily ragweed pollen levels based on previous-day pollen concentration values and previous-day meteorological variables. Laaidi et al. (2003) used two forecasting models, namely (1) summing the temperatures and (2) a multiple regression to forecast pollen season characteristics. Some further papers using multiple regression analysis for modelling daily pollen concentration of different taxa include Angosto et al. (2005), Ribeiro et al. (2008), Stach et al. (2008), Rodríguez-Rajo et al. (2009) and Myszkowska (2013). Furthermore, selection of a suitable statistical

clustering method may help in improving, among other things, the accuracy of the ratio of the transported pollen by long-range air currents in the measured pollen concentration over a target area (Kassomenos et al., 2010).

More advanced techniques such as neural networks, Multi-Layer Perceptron and the support vector regression learning methods have also been used for forecasting air quality parameters (Kassomenos et al., 2006; Juhos et al., 2009; Paschalidou et al., 2011; Vlachogianni et al., 2011; Voukantsis et al., 2011; Kassomenos et al., 2013). However, methods of Computational Intelligence (CI) have only been scarcely applied in airborne pollen related studies. They were used for forecasting (a) daily pollen concentrations (Delaunay et al., 2004, cedar pollen; Aznarte et al., 2007, olive pollen; Rodríguez-Rajo et al., 2010, Poaceae pollen; Voukantsis et al., 2010, Oleaceae, Poaceae and Urticaceae pollen; Puc, 2012; *Betula* pollen), (b) pollen-induced symptoms (Voukantsis et al., 2013), (c) risk level of *Betula* pollen in the air (Castellano-Méndez et al., 2005) and (d) the severity of the Poaceae pollen season (Sánchez Mesa et al., 2005). Furthermore, Aznarte et al. (2007) used neuro-fuzzy models for forecasting olive pollen concentrations. The above-mentioned applications of neural networks and neuro-fuzzy models produced better results than traditional statistical methods (Sánchez Mesa et al., 2005).

These methods of Computational Intelligence 1) can deal with the complexity of the mechanisms concerning the release and dispersion of the airborne pollen, 2) can be applied for different tasks (e.g. optimization and forecasting), 3) are computationally efficient and can be easily integrated into operational use of the models (Voukantsis et al., 2010).

In this paper we use factor analysis with special transformation, a technique for detecting the importance of the influencing variables in defining the pollen levels for 1–7 days ahead. Furthermore, data-oriented models are applied for (1) predicting daily concentration of ragweed pollen that shows the highest allergenicity of all taxa and (2) comparing the efficiency of different prediction techniques over two heavily polluted areas in Europe, i.e. over Lyon (France) and Szeged (Hungary), respectively. The main objectives are: i) development of accurate forecasting models for operational use, ii) evaluation of CI methods that have not been previously applied for *Ambrosia* pollen, such as Multi-Layer Perceptron and regression trees and iii) obtaining a forecast of highest accuracy among CI methods based on input data of former prediction algorithms. Note that (1) data-driven modelling methods including neural networks have never been used in forecasting daily *Ambrosia* pollen concentration, (2) daily alarm thresholds are firstly predicted in the aerobiological literature; furthermore (3) algorithm J48 has never been used in palynological forecasts.

2. Materials and methods

2.1. Study area

Two European cities, namely Lyon (Rhône Valley, France) and Szeged (Pannonian Plain, Hungary) were considered as they represent heavily polluted areas with ragweed pollen in Europe.

These cities differ in their topography and climate as well as in ragweed pollen characteristics. Szeged (46.25N; 20.10E), the largest settlement in South-eastern Hungary, is located at the confluence of the rivers Tisza and Maros (Fig. 1). The area is characterised by an extensive flat landscape of the Great Hungarian Plain with an elevation of 79 m AMSL. The city is the centre of the Szeged region with 203,000 inhabitants. In the Köppen system the climate of Szeged is the Ca type (warm, temperate climate), with relatively mild and short winters and hot summers (Köppen, 1931). Lyon (45.77N; 4.83E) lies in the Rhône-Alpes of France. The city is located in the Rhône valley with an elevation of 175 m AMSL at the confluence of the Rhône and Saône rivers (Fig. 1). Lyon has the second largest metropolitan area in France, with a population of 1.8 million in the urban area,

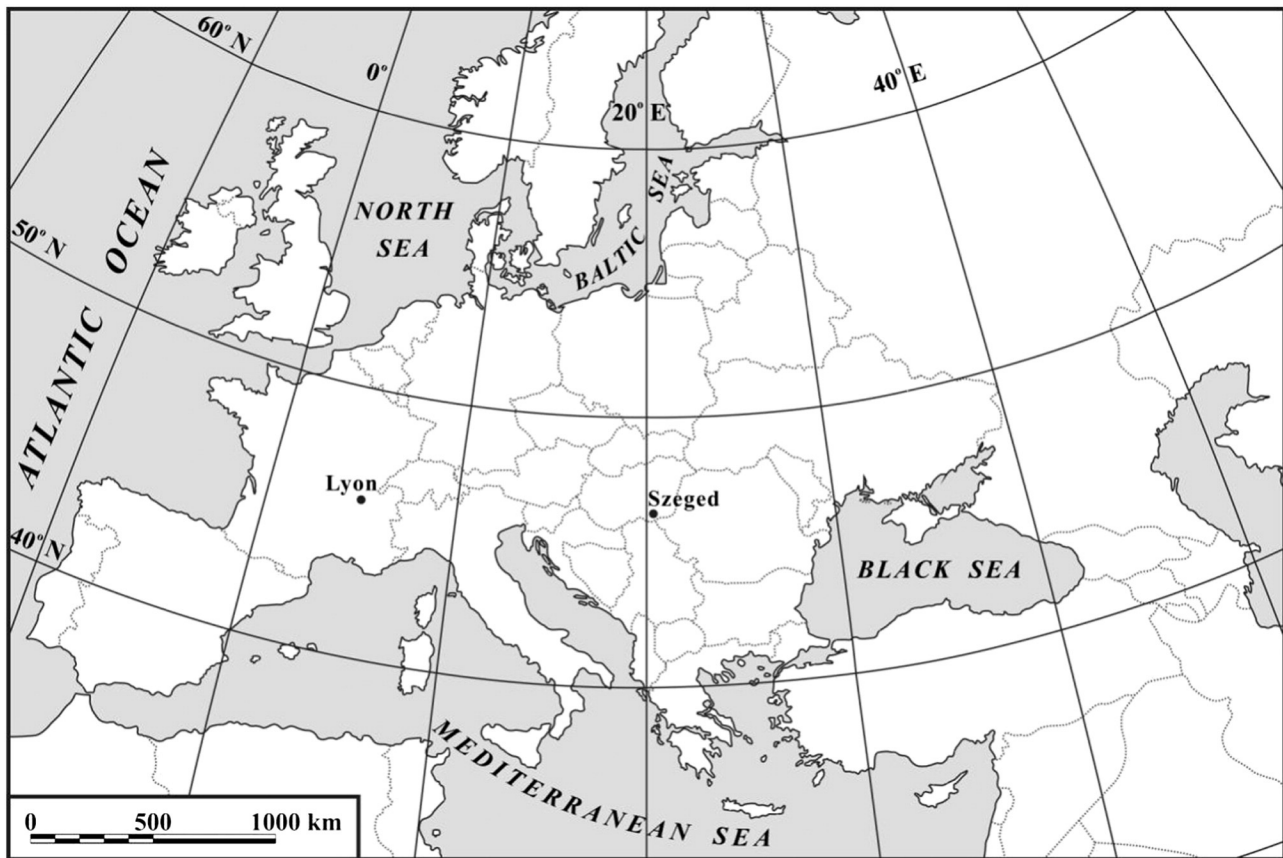


Fig. 1. The geographical positions of Lyon and Szeged.

and 4.4 million in the metropolitan area. In the Köppen system its climate is of the Cbf type. That is, it has a temperate oceanic climate with mild winters and cool-to-warm summers, as well as a uniform annual precipitation distribution (Köppen, 1931).

2.2. Ragweed and ragweed pollen related characteristics

The pollen season of *Ambrosia* lasts from mid-July till mid-October. Seasonality of *Ambrosia* pollen concentrations is the strongest and their peak values are the highest compared to those of all taxa. They show their maximum values in the late summer early autumn period.

Ragweed favours temperate climate and prefers dry, sunny grassy plains, sandy soils, river banks, roadsides, and ruderal sites (disturbed soils) such as vacant lots and abandoned fields (Ziska et al., 2007).

The pollen season is defined by its start and end dates. For the start (end) of the season we used the first (last) date on which 1 pollen grain m^{-3} of air is recorded and at least 5 consecutive (preceding) days also show 1 or more pollen grains m^{-3} (Galán et al., 2001). For a given pollen type, the longest pollen season during the 11-year period was considered for each year.

2.3. Pollen sampling and counting

Airborne ragweed pollen grains were collected in both cities using a seven-day Hirst-type volumetric pollen trap Lanzoni VPS 2000 (Hirst, 1952). Pollen sampling was performed as follows: A specific tape was made adhesive by washing it with silicone oil. The sampler absorbed air at a rate of 10 l/min ($= 14.4 \text{ m}^3/\text{day}$), which is corresponding to the daily requirement of an adult person) and was supplied with a timer, to which a rotating drum was fitted. The drum moved the adhesive tape (2 mm/h) where pollen grains adhered. After a week of exposure, the tape was removed and cut to a length corresponding to 24 h pollen

sampling, covered with a gel mounting agent containing fuxin as a stain and put on a microscope slide. Afterwards, the samples were examined under a light microscope at a magnification of $400\times$ to determine pollen types and counts. Five horizontal sweeps were analysed on each slide. Horizontal sweeps were used because the variation in the concentration during the day can be observed along this axis (the direction of the tape shifts in the sampler). The accuracy of the measurement was proportional to the number of sweeps and the concentration of particles. Counting was performed using a standard sampling procedure. Pollen concentrations were expressed as number of pollen grains $\cdot \text{m}^{-3}$ of air (Käpylä and Penttinen, 1981; Peternel et al., 2006). Note that due to the restrictions of the sampling procedure (daily pollen counts are available after a 7-day period, respectively), applicability of the statistical models for operative pollen forecast is limited in time. This problem can only be solved if instruments based on a totally new principle will be introduced measuring “in situ” pollen counts.

2.4. Pollen and meteorological data

Ten-year (1997–2006) daily mean ragweed pollen data were considered for both Szeged and Lyon. Ragweed pollen concentrations or ragweed pollen alarm threshold values for 1, 2, ..., 7 days after the given day were used as resultant variables. Ragweed pollen levels or ragweed pollen alarm thresholds on the given day; furthermore, the serial number of the given day of the year within the pollen season and altogether 8 meteorological variables on the given day were selected as influencing variables. The meteorological variables include daily values of mean temperature (T_{mean} , $^{\circ}\text{C}$), minimum temperature (T_{min} , $^{\circ}\text{C}$) and maximum temperature (T_{max} , $^{\circ}\text{C}$), daily temperature range ($\Delta T = T_{\text{max}} - T_{\text{min}}$, $^{\circ}\text{C}$), daily mean relative humidity (RH, %), daily total radiation (TR, $\text{W} \cdot \text{m}^{-2}$), daily means of air pressure (P, mm) and wind speed (WS, $\text{m} \cdot \text{s}^{-1}$). For Lyon, daily data of total

radiation were absent hence they were replaced with daily sunshine duration (SD, hour). In Szeged, both the meteorological monitoring station and the aerobiological station are located in the inner city and their distance is within 2 km (Makra et al., 2005). The pollen trap in Lyon is placed at the Lyon–Bron meteorological station on the eastern outskirts of Lyon, around 7 km from the city. It is a semi-urbanized area with fairly low, widely spaced dwellings (Déchamp et al., 1997).

Alarm levels of *Ambrosia* pollen used in Hungary are as follows (Mányoki et al., 2011). Level 0: there is no *Ambrosia* pollen in the air. Level 1: (1–9 pollen grains/m³ of air): (very low pollen concentration, it produces no symptoms. Level 2: (10–29 pollen grains/m³ of air): low pollen concentration, it may cause symptoms. Level 3: (30–49 pollen grains/m³ of air): medium pollen concentration, it may generate symptoms even for less sensitive people. Level 4: (50–99 pollen grains/m³ of air): medium high pollen concentration, it may induce medium strong reactions even for less sensitive people. Level 5: (100–199 pollen grains/m³ of air): high pollen concentration, it may provoke strong or very strong symptoms for all sensitive people. Level 6: (200–499 pollen grains/m³ of air): very high pollen concentration, health state of sensitive people may turn critical, asthmatic symptoms may also occur. Level 7: (500–999 pollen grains/m³ of air): exceptionally high pollen concentration, it may provoke acute symptoms inducing serious decay in the quality of life. Level 8: (>1000 pollen grains/m³ of air): extreme pollen concentration, excessively strong symptoms (Mányoki et al., 2011).

The data were separated into two parts: the training set (1997–2004) to develop forecasting models, and the test set (2005–2006) to validate these models.

2.5. Methods

The study applies the factor analysis with special transformation. Furthermore, the following CI methods are evaluated for the task. Multi-Layer Perceptron (MLP) (Haykin, 1999) models are artificial neural network models capable of modelling complex and highly nonlinear processes. Two types of neural networks are applied: a complex (MLP with more than one hidden layer) and a less complex (MLPRegressor with only one hidden layer) version. For predicting both the daily pollen concentrations and daily alarm levels of ragweed, several tree algorithms (M5P, REPTree, DecisionStump and J48) are used. These algorithms have not been used for the above tasks. The models have been developed in Matlab environment with WEKA implementation of the above algorithms, described in Hall et al. (2009).

2.5.1. Factor analysis with special transformation

Factor analysis identifies linear relationships among examined variables and thus helps to reduce the dimensionality of the initial database without substantial loss of information. Factor analysis was applied to our initial datasets consisting daily values of 11 correlated variables [10 explanatory variables including the serial number of the days in the year, 8 meteorological and 1 pollen variable (*Ambrosia* pollen level or alarm level) and 1 resultant variable (*Ambrosia* pollen level or alarm level for 1–7 target days, respectively)] in order to transform the original variables into fewer uncorrelated variables. These new variables, called factors, can be viewed as latent variables explaining the joint behaviour of the day in the year, furthermore the meteorological elements and the pollen variables. The number of retained factors can be determined by different criteria. The most common and widely accepted one is to specify a least percentage (80%) of the total variance of the original variables that has to be explained (Jolliffe, 1993) by the factors. After performing the factor analysis, a special transformation of the retained factors was made to discover to what degree the above-mentioned explanatory variables affect the resultant variable and to give a rank of their influence (Jahn and Vahle, 1968). When performing factor analysis on the standardized variables, factor loadings are correlation coefficients between the factors and the original variables. Consequently, if the resultant variable is strongly correlated with a factor and an explanatory variable is highly correlated with this factor, then the explanatory variable is also highly correlated with the resultant variable. Hence, it is advisable to combine all the factors together with the resultant variable into one new factor. It is effective to do so that only one factor has big contribution to the resultant variable and the remaining factors are uncorrelated with the resultant variable. This latter procedure is called special transformation (Jahn and Vahle, 1968).

2.5.2. Multi-layer Perceptron (MLP)

MLP (Haykin, 1999) is the most successful implementation of feedforward artificial neural networks and have been widely applied in the field of environmental science for classification, regression and function approximation problems. MLP can model complex and highly non-linear processes through the topology of the network. Multi-Layer Perceptron comprises an input and an output layer with one or more hidden layers of nonlinearly-activation functions. These capabilities have already been successfully utilized in previous studies in order to forecast pollen concentrations (e.g. Voukantsis et al., 2010), therefore MLP is an important procedure and this is the first occasion

Table 1

Special transformation, Szeged. Relevance of the influencing variables in defining the resultant variable (pollen levels) 1–7 days ahead and the rank of importance of the influencing variables for determining the resultant variable. (Thresholds of significance: *italic*: $\alpha_{0.05} = 0.064$; **bold**: $\alpha_{0.01} = 0.084$).

^a Day Influencing variables																				
^b Day			^c T _{mean}		^d T _{max}		^e T _{min}		^f ΔT		^g RH		^h TR		ⁱ P		^j WS		<i>Ambrosia</i>	
Weight	Rank		Weight	Rank	Weight	Rank	Weight	Rank	Weight	Rank	Weight	Rank	Weight	Rank	Weight	Rank	Weight	Rank	Weight	Rank
+1	0.00	7	0.13	7	0.14	7	0.06	7	0.10	4	−0.01	6	0.11	7	−0.07	4	0.07	1	0.96	1
+2	−0.02	6	0.16	6	0.17	6	0.07	6	0.11	3	−0.02	3	0.13	6	−0.06	6	0.06	2	0.93	2
+3	−0.04	5	0.18	5	0.19	5	0.09	4	0.12	2	−0.02	2	0.15	5	−0.08	3	0.05	3	0.90	3
+4	−0.06	4	0.20	4	0.21	4	0.09	5	0.15	1	−0.03	1	0.17	1	−0.07	5	0.02	4	0.87	4
+5	−0.08	3	0.21	3	0.21	3	0.14	3	0.09	5	−0.01	5	0.15	4	−0.05	7	−0.01	5	0.84	5
+6	−0.13	2	0.26	2	0.25	2	0.19	2	0.07	6	0.00	7	0.16	3	−0.10	1	0.01	6	0.81	6
+7	−0.17	1	0.29	1	0.27	1	0.25	1	0.03	7	0.01	4	0.16	2	−0.09	2	0.00	7	0.78	7

^a Target day of the forecast.

^b Serial number of the day in the year.

^c Daily mean temperature (°C).

^d Daily maximum temperature (°C).

^e Daily minimum temperature (°C).

^f Daily temperature range (°C).

^g Daily relative humidity (%).

^h Daily total radiation (W · m^{−2}).

ⁱ Daily mean air pressure (hPa).

^j Daily wind speed (m · s^{−1}).

for using this method for predicting daily concentrations and daily alarm thresholds of ragweed pollen.

In the study, MLP model always has more than one hidden layer and MLP has several parameters that need to be set. They are training time, learning rate, hidden layers and neurons in the layers. Training time was 1500, learning rate started from 0.3 and it was reduced in each step. This helps to stop the network from diverging from the target output as well as improve the general performance. The number of hidden layers is generated automatically by WEKA. MLP was applied with the same options for predicting both the daily pollen concentrations and daily alarm thresholds of ragweed.

2.5.2.1. MLPRegressor and MLPClassifier. Both classes are built-in WEKA modelling softwares (Hall et al., 2009). These algorithms are special parts of Multi-Layer Perceptrons. They always have only one hidden layer, where the number of neurons is user specific. Both use optimization by minimizing the squared error plus a quadratic penalty with the BFGS method. All parameters are standardized, including the target variable. The activation function is a logistic function. MLPRegressor and MLPClassifier are applied for predicting the daily pollen concentrations and daily alarm thresholds of ragweed, respectively.

2.5.3. Tree-based algorithms

2.5.3.1. M5P. This procedure is a reproduction of Quinlan's M5 algorithm (Quinlan, 1992) being a combination of decision trees and multivariate regression models. Contrary to other regression trees the leaves of the M5P tree structure consist of MLR models. So, it is possible to model local linearity within the data similarly to piecewise linear functions. This is the first study applying M5P to model daily ragweed pollen data.

2.5.3.2. DecisionStump. DecisionStump builds a decision tree with a single split point. It makes (1) regression based on mean-squared errors or (2) classification based on entropy depending on the data type to be forecasted.

2.5.3.3. REPTree. REPTree is a fast decision tree learner. It builds a decision tree using information gain or makes a regression tree from the variance. It applies pruning with backfitting for reducing error.

2.5.3.4. J48. J48 is an implementation of C4.5 algorithm in the WEKA data mining pool. C4.5 builds decision trees from a set of training data in the same way as ID3 using the concept of information entropy. J48 classifier

achieves fast execution times and adequate scales of large datasets (Quinlan, 1993).

3. Results and discussion

3.1. Performance evaluation

3.1.1. The weight of the influencing variables in determining a future day pollen level

The importance of the serial number of the day in the year, furthermore daily values of eight meteorological variables and *Ambrosia* pollen level were analysed in determining a future day pollen level for 1–7 days ahead using factor analysis with special transformation (Tables 1–2). When comparing the results very little similarity was received for the two cities. The importance of the serial number of the day of the year shows a tendency of higher weights towards increasing target days for both Szeged and Lyon; however, this effect is more remarkable for Szeged. From the meteorological influencing variables, only TR and *Ambrosia* pollen level showed similarly significant positive weights with values of the same magnitude in determining a future day pollen level (Tables 1–2). The weights of actual day *Ambrosia* pollen level emerge extraordinarily from all variables indicating its high significance for both cities. This confirms former findings according to which the most decisive influencing variable of all is actual day *Ambrosia* pollen level for assigning pollen levels 1–7 days ahead (Makra et al., 2011b; Makra and Matyasovszky, 2011).

For Szeged, T_{mean} , T_{max} and ΔT indicate significant and substantially higher positive weights compared to Lyon. While the importance of RH and WS can be negligible for Szeged, these parameters show highly relevant negative associations in formation pollen levels 1–7 days ahead for Lyon. P shows significant negative and positive weights for Szeged and Lyon, respectively. The here-mentioned definite difference in the weights and signs of the influencing variables for the two cities can be explained by their different climate and relief. The temperate oceanic climate of Lyon with cool-to-warm summers and a uniform annual precipitation distribution confirms the role of humidity parameters (RH) here, while the location of the city in the Rhone valley on the foothills of High Alps emphasizes the weight of the wind (WS). The warm, temperate climate of Szeged with hot summers highlights the importance of the temperature parameters (T_{mean} , T_{max} , T_{min} and ΔT) and shows insignificant weights for the humidity (RH), while the central location of the city in the Pannonian Plain makes negligible the role of the wind (WS) (Tables 1–2).

Table 2
Special transformation, Lyon. Relevance of the influencing variables in defining the resultant variable (pollen levels) 1–7 days ahead and the rank of importance of the influencing variables for determining the resultant variable. (thresholds of significance: *italic*: $\alpha_{0.05} = 0.064$; **bold**: $\alpha_{0.01} = 0.084$).

^a Day	Influencing variables																			
	^b Day		^c T_{mean}		^d T_{max}		^e T_{min}		^f ΔT		^g RH		^h TR		ⁱ P		^j WS		<i>Ambrosia</i>	
	Weight	Rank	Weight	Rank	Weight	Rank	Weight	Rank	Weight	Rank	Weight	Rank	Weight	Rank	Weight	Rank	Weight	Rank	Weight	Rank
+1	0.05	2	0.12	1	0.11	1	0.09	5	<i>0.08</i>	1	−0.14	5	0.17	5	0.03	7	−0.02	7	0.87	1
+2	0.04	4	0.06	5	0.05	2	<i>0.07</i>	7	0.03	6	−0.17	3	0.24	2	0.16	2	−0.11	4	0.71	2
+3	0.01	6	0.05	7	0.04	4	<i>0.08</i>	6	0.01	7	−0.18	1	0.26	1	0.16	1	−0.13	2	0.69	4
+4	−0.01	7	0.06	6	0.03	7	0.13	4	−0.03	5	−0.17	2	0.18	4	0.10	3	−0.09	6	0.70	3
+5	−0.03	5	<i>0.07</i>	4	0.03	6	0.14	3	−0.03	4	−0.15	4	0.19	3	0.10	4	−0.11	3	0.66	5
+6	−0.05	3	<i>0.08</i>	3	0.04	5	0.17	2	−0.03	2	−0.12	6	0.17	6	0.11	5	−0.10	5	0.62	7
+7	−0.07	1	0.09	2	0.04	3	0.17	1	−0.03	3	−0.11	7	0.10	7	0.05	6	−0.14	1	0.62	6

^a Target day of the forecast.

^b Serial number of the day in the year.

^c Daily mean temperature (°C).

^d Daily maximum temperature (°C).

^e Daily minimum temperature (°C).

^f Daily temperature range (°C).

^g Daily relative humidity (%).

^h Daily total radiation ($\text{W} \cdot \text{m}^{-2}$).

ⁱ Daily mean air pressure (hPa).

^j Daily wind speed ($\text{m} \cdot \text{s}^{-1}$).

Table 3

Statistical evaluation of the *Ambrosia* pollen concentration forecasting models for Szeged in terms of the correlation coefficient (r), the Root Mean Square Error (RMSE) and the Mean Absolute Error (MAE). T indicates the forecasting horizon (in days). (MLP: Multi-Layer Perceptron model, M5P: Regression tree model, REPTree: regression tree model, DecisionStump: decision tree model and MLPRegressor: Multi-Layer Perceptron model).

T (day)	MLP			M5P			REPTree			DecisionStump			MLPRegressor		
	r	RMSE	MAE	r	RMSE	MAE	r	RMSE	MAE	r	RMSE	MAE	r	RMSE	MAE
+1	0.99	45.08	17.11	0.98	52.34	18.60	0.95	63.69	24.25	0.75	128.86	78.95	0.97	60.89	20.28
+2	0.99	66.66	27.54	0.83	115.81	38.30	0.85	110.29	38.11	0.64	150.69	64.11	0.97	76.02	34.72
+3	0.98	80.08	33.79	0.82	117.62	46.30	0.80	123.15	45.26	0.63	152.21	64.09	0.61	153.23	56.85
+4	0.96	94.02	40.69	0.78	126.04	54.91	0.71	138.79	58.79	0.63	153.05	64.97	0.54	162.09	61.61
+5	0.94	111.30	50.43	0.59	153.11	73.12	0.69	143.99	59.74	0.62	154.44	65.28	0.42	175.27	73.71
+6	0.92	121.51	58.88	0.53	161.07	81.92	0.49	166.75	77.98	0.60	157.77	66.24	0.65	149.11	71.15
+7	0.90	127.13	63.34	0.43	172.45	83.79	0.43	174.15	75.35	0.60	157.97	66.34	0.54	161.88	80.57

3.1.2. Performance of the forecasting models

The following statistical indices were used to compare the performance of the models: (1) correlation coefficient as a measure of the strength; (2) Root Mean Square Error (RMSE) as a measure of the error in the forecast; and (3) Mean Absolute Error (MAE) as another measure of the error in the forecast.

For Szeged, MLP provides the best results for the forecasting horizon (1–7 days) that is confirmed by former studies (Sánchez-Mesa et al., 2002; Voukantsis et al., 2010). 1-day forecast indicates the best performance. This can be explained by the close association between the pollen concentrations of consecutive days and the predominant role of local pollen release in the measured pollen concentration in Szeged (Makra et al., 2010). The efficiency of MLPRegressor declines intensely when forecasting more than 2 days ahead due to its simpler construction (Table 3; Fig. 2). Considering decision trees, performance of REPTree decreases for >1-day forecasts, while DecisionStump provides an overall weak result for the forecasting horizon. MLPRegressor serves the best performance for 1 and 2-day ahead forecasts; however, when the forecasting horizon exceeds 2 days, the accuracy of the predictions sharply decrease. High values of RMSE and MAE can be attributed to the very high variability of the daily ragweed pollen concentrations. There are no periods in the pollen season that can be approximated linearly with high confidence. This is why M5P is not a reliable method for >2 days forecasts. Based on the scatter plots, when the forecasting horizon expands, (1) the accuracy of the forecast weakens and (2) the best method (MLP) increasingly underestimates the pollen concentration (Fig. 2). Note that for the remaining methods, under- and overestimation may occur at both the beginning and end of the pollen season. However, MLP underestimates consistently regardless the day of the pollen season and the length of the forecasting horizon. On the whole, all the methods analysed in the study (except for the simplest DecisionStump) perform well for 1 and 2-day ahead forecasts for Szeged. Note, however, that MLP provides correlation coefficient 0.96 even for 4-day forecast and the efficiency of the prediction does not decrease below $r = 0.90$ even for 7-day forecast. For the remaining methods the accuracy of the forecasts for >2 days ahead indicate sharp decay (Table 3; Fig. 2).

Predicting alarm levels is another area of pollen forecasts. Their fast and efficient prediction serves a simple and easily traceable tool for sensitive people in preparing to days of high pollen load. In order to better predict *Ambrosia* pollen alarm levels introduced for Hungary (Mányoki et al., 2011), the original 0–1 and 7–8 categories were aggregated. In the scatter plots of forecasting alarm levels for both Szeged and Lyon, the horizontal axis indicates the observed alarm level, while the vertical axis shows the forecasted alarm level. Starting from the actual day several alarm levels can be expected on the target day depending on the initial day, and the forecasts for the target day can result in different alarm levels. Note that with the increase of the forecasting horizon the uncertainty of the alarm level increases. The numbers beside the forecasted alarm levels indicate their total occurrences for the data set examined (Figs. 2–3).

MLP shows the best results for the alarm levels of Szeged. The decision tree based REPTree model provides better or similarly good performance than MLP since alarm levels form classes for which REPTree is very sensitive. Besides these methods the simply constructed MLPClassifier, that has a faster run-time compared to MLP, is yet capable for predicting alarm levels with good performance. When forecasting 1-day alarm level, three methods (MLP, REPTree and MLPClassifier) indicate the same efficacy (Table 4). 1, 2 and 3-day ahead predictions of alarm levels perform well, while forecasts for >3 days ahead indicate substantial decrease for all the methods applied. Note that MLP provides good result even for a 5-day forecast, as well; whereas, the performance of DecisionStump is the worst due to the construction of the method: it carries out only one single split (Table 4; Fig. 2).

For Lyon, MLP provides the best performance of all the procedures. One-layer MLPRegressor is the least efficient and, similarly to the case of Szeged, DecisionStump is not capable for predicting alarm levels. As wind speed shows significant negative associations with the measured pollen concentrations for 1–7 days ahead (Table 2), this parameter strongly destroys the performance of the methods (Tables 5–6; Fig. 3).

The procedures perform well for Szeged, but they are not really efficient for Lyon. For the latter case, neither pollen concentrations nor alarm levels indicate definite annual course, due to the substantially smaller pollen concentrations, furthermore different climate and relief

Table 4

Statistical evaluation of the *Ambrosia* pollen alarm level forecasting models for Szeged in terms of the correlation coefficient (r), the Root Mean Square Error (RMSE) and the Mean Absolute Error (MAE). T indicates the forecasting horizon (in days). (MLP: Multi-Layer Perceptron model, J48: decision tree model, REPTree: decision tree model, DecisionStump: decision tree model and MLPClassifier: Multi-Layer Perceptron model).

T (day)	MLP			J48			REPTree			DecisionStump			MLPClassifier		
	r	RMSE	MAE	r	RMSE	MAE	r	RMSE	MAE	r	RMSE	MAE	r	RMSE	MAE
+1	0.98	0.37	0.14	0.94	0.70	0.44	0.98	0.40	0.16	0.74	1.32	0.92	0.98	0.37	0.14
+2	0.95	0.67	0.40	0.91	0.88	0.52	0.96	0.60	0.32	0.74	1.32	0.92	0.96	0.62	0.37
+3	0.96	0.67	0.38	0.87	1.01	0.63	0.90	0.93	0.58	0.74	1.32	0.93	0.90	0.94	0.53
+4	0.80	1.19	0.73	0.85	1.08	0.73	0.91	0.85	0.54	0.74	1.32	0.93	0.81	1.22	0.70
+5	0.94	0.77	0.46	0.79	1.26	0.87	0.92	0.78	0.46	0.73	1.32	0.94	0.82	1.14	0.78
+6	0.82	1.18	0.78	0.73	1.39	0.95	0.83	1.10	0.74	0.73	1.32	0.94	0.86	1.05	0.67
+7	0.76	1.36	0.88	0.72	1.41	0.93	0.77	1.32	0.92	0.73	1.32	0.95	0.74	1.39	1.02

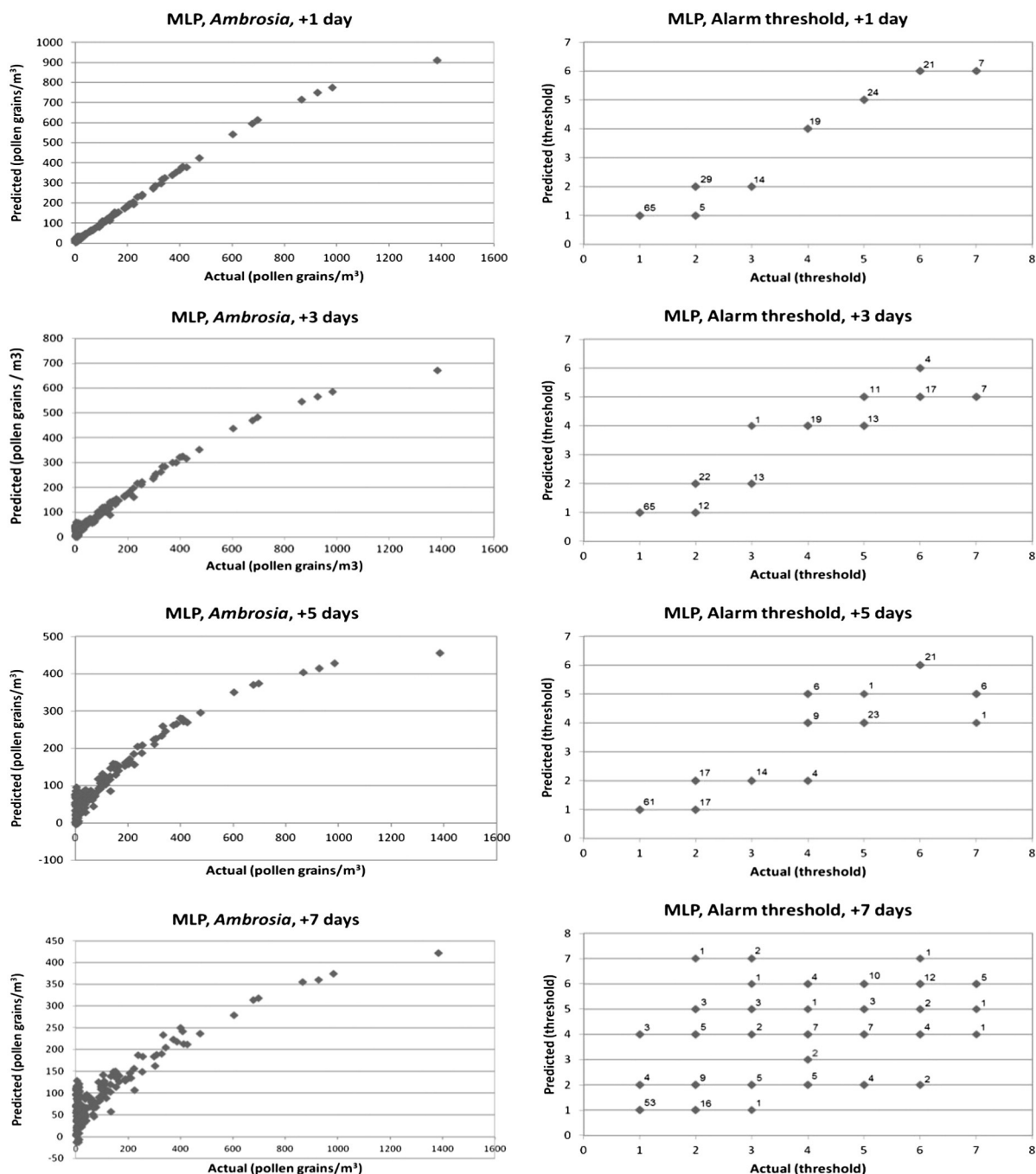


Fig. 2. Scatter plots, Szeged. Selected scatter plots of actual and predicted *Ambrosia* pollen concentrations (MLP), as well as alarm thresholds (MLP). The forecasting horizon is given in days.

in Lyon compared to those of Szeged (Tables 6). Predictability of alarm levels for Lyon is quite weak that can be explained with the following reasons: (1) alarm levels introduced for Hungary cannot be applied well for Lyon due to the different distribution of pollen concentrations for the two cities, (2) structure of the association between the influencing and resultant variables are different for Szeged and Lyon (Tables 1–2; Tables 5–6; Fig. 3).

Uncertainties in the accuracy of the forecasts can be explained by the lack of sufficient number of influencing variables including the fact that environmental associations of ragweed pollen level has not been fully discovered. For example, high air pollutant concentrations are likely to have either short or long term impact on pollen levels (Minero et al., 1998; Jäger et al., 1991), especially in a polluted urban environment like Szeged and Lyon. The results show that the learning strategies of the algorithms can perform well, but the really good model is MLP for

predicting both pollen concentrations and alarm levels for each city. The results received for Szeged and Lyon show that we can perform accurate forecasts of the daily pollen concentrations and alarm levels for several days ahead. The efficiency of the models belongs to the best ones compared to those reported in the literature. When forecasting, the following values of coefficient of determination (R^2) (i.e. squared correlations) of one day ahead forecasts were received: 0.60 for Poaceae using neural networks (Sánchez-Mesa et al., 2002); 0.93 again for Poaceae using neural networks (Rodríguez-Rajo et al., 2010); 0.45 for grass pollen (whole season) using correlation analysis (Stach et al., 2008) and 0.79 for Poaceae using Multiple Linear Regression (Voukantsis et al., 2010). Our study provides a coefficient of determination of 0.98 (*Ambrosia*, Szeged, one day and two days ahead) using Multi-Layer Perceptron that ranks this model the best one in the literature.

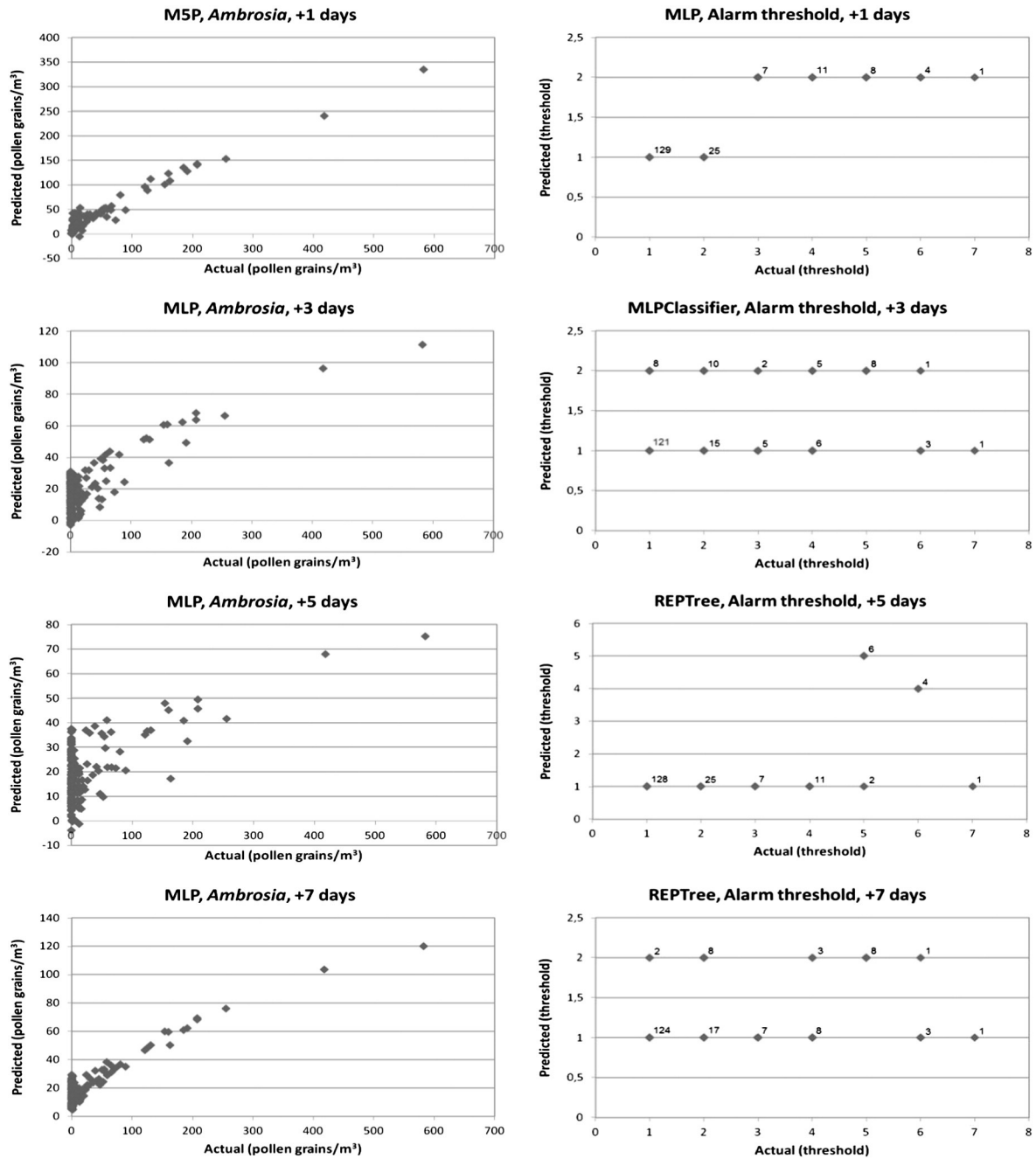


Fig. 3. Scatter plots, Lyon. Selected scatter plots of actual and predicted *Ambrosia* pollen concentrations (M5P, MLP), as well as alarm thresholds (MLP, MLPClassifier, REPTree). The forecasting horizon is given in days.

Table 5

Statistical evaluation of the *Ambrosia* pollen concentration forecasting models for Lyon in terms of the correlation coefficient (r), the Root Mean Square Error (RMSE) and the Mean Absolute Error (MAE). T indicates the forecasting horizon (in days). (MLP: Multi-Layer Perceptron model, M5P: Regression tree model, REPTree: regression tree model, DecisionStump: decision tree model and MLPRegressor: Multi-Layer Perceptron model).

T (day)	MLP			M5P			REPTree			DecisionStump			MLPRegressor		
	r	RMSE	MAE	r	RMSE	MAE	r	RMSE	MAE	r	RMSE	MAE	r	RMSE	MAE
+1	0.96	33.53	12.73	0.97	28.26	11.62	0.70	48.99	15.89	0.81	45.88	18.39	0.36	62.09	22.44
+2	0.91	48.31	21.67	0.68	52.14	21.05	0.42	60.85	23.63	0.43	60.13	23.33	0.59	56.29	20.08
+3	0.81	53.59	24.74	0.64	55.12	22.76	0.57	56.42	20.21	0.43	60.88	25.20	0.33	62.86	25.72
+4	0.74	63.17	29.13	0.29	63.06	24.80	0.41	60.85	24.47	0.43	60.63	24.19	0.01	70.02	29.37
+5	0.64	58.82	26.67	0.19	65.15	26.80	0.42	59.91	22.83	0.35	62.18	25.65	-0.01	73.23	32.35
+6	0.78	55.92	24.81	0.43	59.93	23.81	0.33	62.05	24.75	0.35	62.15	25.54	0.01	72.99	32.16
+7	0.92	51.67	22.47	0.80	52.29	21.84	0.34	61.75	23.94	0.34	62.06	25.33	0.12	69.23	30.04

Table 6
Statistical evaluation of the *Ambrosia* pollen alarm level forecasting models for Lyon in terms of the correlation coefficient (r), the Root Mean Square Error (RMSE) and the Mean Absolute Error (MAE). T indicates the forecasting horizon (in days). (MLP: Multi-Layer Perceptron model, J48: decision tree model, REPTree: decision tree model, DecisionStump: decision tree model and MLPClassifier: Multi-Layer Perceptron model).

T (day)	MLP			J48			REPTree			DecisionStump			MLPClassifier		
	r	RMSE	MAE	r	RMSE	MAE	r	RMSE	MAE	r	RMSE	MAE	r	RMSE	MAE
+1	0.91	1.12	0.53	0.80	1.05	0.46	0.84	0.75	0.29	–	1.48	0.69	0.73	0.97	0.40
+2	0.65	1.31	0.62	0.35	1.67	0.85	0.52	1.22	0.48	–	1.48	0.70	0.51	1.20	0.58
+3	0.26	1.60	0.80	0.17	1.66	0.90	–	1.48	0.70	–	1.48	0.70	0.44	1.29	0.60
+4	0.39	1.41	0.67	0.63	1.07	0.49	0.47	1.33	0.63	–	1.48	0.70	0.45	1.35	0.60
+5	0.26	1.45	0.70	0.37	1.32	0.72	0.65	1.11	0.51	–	1.48	0.70	0.59	1.23	0.54
+6	0.46	1.40	0.68	0.38	1.28	0.61	0.52	1.23	0.52	–	1.48	0.70	0.31	1.30	0.68
+7	–	1.48	0.71	0.38	1.49	0.75	0.48	1.32	0.62	–	1.48	0.70	0.14	1.43	0.74

3.2. Model fitting on the days of the highest pollen levels

Pollen concentrations on the days exhibiting the highest pollen levels during a 7-day period were predicted and analysed for both cities (Fig. 4).

For example, regarding the absolute maximum pollen counts within the 10-year period examined, for Szeged and Lyon the best 1-day forecast is provided by MLP (actual value: 1385 pollen grains/m³; forecasted value: 910 pollen grains/m³) and M5P (actual value: 582 pollen grains/m³; forecasted value: 335 pollen grains/m³), respectively. However, all methods underestimate the pollen concentrations in these episodic situations.

The message of the above experiment is that MLP, M5P and MLPRegressor follow well the annual course of the pollen concentration. This is important information as the usefulness of a good forecast is much higher for the days of the highest pollen concentrations than for those of small pollen levels at the beginning and end of the pollen season. Accordingly, these methods can help in developing personalized information services that could improve the overall quality of life of sensitised people.

4. Conclusions

We applied Computational Intelligence procedures in order to predict daily values of *Ambrosia* pollen concentrations and alarm levels for Szeged (Hungary) and Lyon (France). Contrary to the difficulties in availability of daily pollen levels (they are at disposable only once a week), forecasts of daily ragweed pollen concentrations and alarm levels were successful for 1–7 days ahead for both cities. The importance of the influencing variables (the serial number of the day in the year, meteorological and pollen variables) in forming the resultant variable (pollen levels or alarm levels for 1–7 days ahead) was analysed. The weights of *Ambrosia* pollen level emerge extraordinarily from all variables indicating its high significance in determining pollen levels (alarm levels) for 1–7 days ahead for both cities. The weights of the

rest of influencing variables are different for the two cities. For instance, the most important variables are temperature-related ones for Szeged, while relative humidity and wind speed have the most important role in forming pollen concentrations in Lyon.

For Szeged, Multi-Layer Perceptron models provide results similar with tree-based models for predicting pollen concentration 1 and 2-days ahead, while for more than two days ahead they deliver better results than tree-based models. For Lyon, only Multi-Layer Perceptron gives acceptable result for predicting pollen levels 1 and 2-days ahead. Concerning the alarm levels, the efficiency of the procedures differs substantially.

When fitting the models to the days of the highest pollen levels the more complex CI methods proved better for both cities. MLP and M5P methods provided the best results for Szeged and Lyon, respectively. We have shown that the selection of the optimal method depends on climate as a function of geographical location and relief.

Results received can be utilized for the national pollen information services. Total medical costs of ragweed pollen can be substantially reduced if sensitised people can be prepared in time for serious ragweed pollen episodes. Decision-makers are responsible for introducing regulations and actions in order to facilitate the problem caused by ragweed pollen. Furthermore, responsibility of aero-biologists is developing personalized information services in order to improve the overall quality of life of sensitised people. Note however, that due to the restrictions of the sampling procedure used (daily pollen counts are available only after a 7-day period) the applicability of the methods presented is limited in terms of operational use. Accordingly, for the time-being the methodology introduced here can only be used as supportive means to the original forecasting methods (models). This problem can only be solved if low-cost, automatic pollen samplers based on a totally new principle will be introduced by “in situ” recognizing pollen types and measuring pollen counts.

The methods applied are sensitive to the number of the influencing parameters. A further aim is to use much more influencing parameters (including further meteorological parameters, in addition chemical air

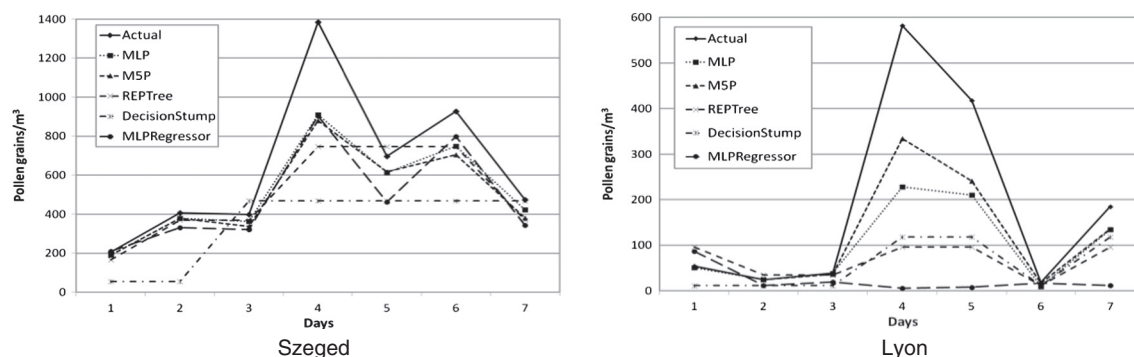


Fig. 4. One-day forecasts for a seven-day period encompassing the day of the highest pollen load of *Ambrosia* (Actual: measured pollen concentrations, MLP: Multi-Layer Perceptron model, M5P: regression tree model, REPTree: decision tree model, DecisionStump: decision tree model, MLPRegressor: Multi-Layer Perceptron model).

pollutants, land use, relief, etc.) in order to develop a general model for different locations.

Acknowledgements

The authors would like to thank Gábor Motika (Environmental Conservancy Inspectorate, Szeged, Hungary) for providing the meteorological data of Szeged, Miklós Juhász (University of Szeged) for providing the daily pollen concentration data of Szeged and Zoltán Sümeghy for the digital mapping in Fig. 1. This research was supported by the European Union and the State of Hungary, co-financed by the European Social Fund in the framework of TÁMOP 4.2.4. A/2-11-1-2012-0001 'National Excellence Program'.

References

- Angosto JM, Moreno-Grau S, Bayo J, Elvira-Rendueles B. Multiple regression models for predicting total daily pollen concentration in Cartagena. *Grana* 2005;44:108–14.
- Ariano R, Canonica GW, Passalacqua G. Possible role of climate changes in variations in pollen seasons and allergic sensitizations during 27 years. *Ann Allergy Asthma Immunol* 2010;104:215–22.
- Aznarte JL, Sánchez JMB, Lugilde DN, Fernández CDL, de la Guardia CD, Sánchez FA. Forecasting airborne pollen concentration time series with neural and neuro-fuzzy models. *Expert Syst Appl* 2007;32:1218–25.
- Béres I, Novák R, Hoffmann Pathy Zs, Kazinczi G. Az ürömlevelű parlafű (*Ambrosia artemisiifolia* L.) elterjedése, morfológiája, biológiája, jelentősége és a védekezés lehetőségei. [Distribution, morphology, biology and importance of common ragweed (*Ambrosia artemisiifolia* L.) and protection facilities.]. *Gyomnövények Gyomirtás* 2005;6:1–48.
- Bonini M, Albertini R, Brighetti MA, Ugolotti M, Travaglini A. (RIMA-Italian Monitoring Network in Aerobiology). Ragweed pollen spreading in Italy. Second International Ragweed Conference, Lyon (France); 2012. (March 28–29, <http://www.internationalragweedsociety.org/2ndIRC/2ndIRC2012.html>).
- Bullock JM, Chapman D, Schafer S, Roy D, Girardello M, Haynes T, et al. Assessing and controlling the spread and the effects of common ragweed in Europe. Final report: ENV.B2/ETU/2010/0037. UK: Natural Environment Research Council; 2010. (456 pp., <https://circabc.europa.eu/sd/d/1ad57e8-327c-4fdd-b908-dadd5b859eff/FinalFinalReport.pdf>).
- Castellano-Méndez M, Aira MJ, Iglesias I, Jato V, González-Manteiga W. Artificial neural networks as a useful tool to predict the risk level of Betula pollen in the air. *Int J Biometeorol* 2005;49:310–6.
- Chauvel B, Dessaint F, Cardinal-Legrand C, Bretagnolle F. The historical spread of *Ambrosia artemisiifolia* L. in France from herbarium records. *J Biogeogr* 2006;33:665–73.
- Cristofori A, Cristofolini F, Gottardini E. Twenty years of aerobiological monitoring in Trentino (Italy): assessment and evaluation of airborne pollen variability. *Aerobiologia* 2010;26:253–61.
- D'Amato G, Cecchi L. Effects of climate change on environmental factors in respiratory allergic diseases. *Clin Exp Allergy* 2008;38:1264–74.
- Déchamp C, Rimet ML, Méon H, Deviller P. Parameters of ragweed pollination in the Lyon's area (France) from 14 years of pollen counts. *Aerobiologia* 1997;13:275–9.
- Delaunay JJ, Seymour C, Fouillet V. Investigation of short-range cedar pollen forecasting. *Phys Rev E* 2004;70. <http://dx.doi.org/10.1103/PhysRevE.70.066214>. Article No. 066214.
- Frei T. Climate change and its impact on airborne pollen in Basel, Switzerland 1969–2007. *Allergologie* 2008;31:165–9.
- Galán C, Cariñanos P, García-Mozo H, Alcázar P, Domínguez-Vilches E. Model for forecasting Olea europaea L. airborne pollen in South-West Andalusia, Spain. *Int J Biometeorol* 2001;45:59–63.
- Gladieux P, Giraud T, Kiss L, Genton BJ, Jonot O, Shykoff JA. Distinct invasion sources of common ragweed (*Ambrosia artemisiifolia*) in Eastern and Western Europe. *Biol Invasions* 2011;13:933–44.
- Hall M, Frank E, Holmes G, Pfahringer B, Reutemann P, Witten IH. The WEKA data mining software: an update. *SIGKDD Explor.* 2009;11:10–8. <http://dx.doi.org/10.1145/1656274.1656278>.
- Harf R, Déchamp C. Pollinosis and anti-allergic drug use: ambróisiosis in the Rhone-Alpes region. *Rev Mal Respir* 2001;18:517–22.
- Haykin S. Neural Networks: a comprehensive foundation. 2nd ed. Prentice Hall: Upper Saddle River, NJ; 1999.
- Hirst JM. An automatic volumetric spore trap. *Ann Appl Biol* 1952;39:257–65.
- Intergovernmental Panel on Climate Change. Summary for policymakers. Climate change 2013. In: Stocker TF, Qin D, Plattner GP, Tignor MMB, Allen SK, Boschung J, Nauels A, Xia Y, Bex V, Midgley PM, editors. The Physical science basis. Contribution of working group I to the fifth assessment report of the intergovernmental panel on climate change. Cambridge, UK: Cambridge University Press; 2013.
- Jäger S, Spijksma FTM, Noland N. Fluctuations and trend in airborne concentrations of some abundant pollen types, monitored at Vienna, Leiden and Brussels. *Grana* 1991;30:309–12.
- Jahn W, Vahle H. Die Faktoranalyse und ihre Anwendung. Berlin: Verlag der Wirtschaft; 1968 (in German).
- Járai-Komlódi M. Ragweed in Hungary. In: FTHM Spijksma, editor. Ragweed in Europe. Satellite symposium proceedings of 6th International Congress on Aerobiology, Perugia, Italy. Horsholm, Denmark: Alk-Abelló A/S; 1998. p. 33–8.
- Jolliffe IT. Principal component analysis: a beginner's guide – II. Pitfalls, myths and extensions. *Weather* 1993;48:246–53.
- Juhos I, Makra L, Tóth B. The behaviour of the multi-layer perceptron and the support vector regression learning methods in the prediction of NO and NO₂ concentrations in Szeged, Hungary. *Neural Comput Appl* 2009;18:193–205.
- Kadocsa E, Juhász M. A szénanáthás betegek allergénspektrumának változása a Dél-Alföldön (1990–1998) (Change of allergen spectrum of hay-fever patients in Southern Great Plain (1990–1998)). *Orv Hetil* 2000;141:12617–20. (in Hungarian).
- Kadocsa E, Juhász M. Study of airborne pollen composition and allergen spectrum of hay fever patients in South Hungary (1990–1999). *Aerobiologia* 2002;18:203–9.
- Käpylä M, Penttinen A. An evaluation of the microscopical counting methods of the tape in Hirst-Burkard pollen and spore trap. *Grana* 1981;20:131–41.
- Kassomenos P, Karakitsios S, Papaloukas C. Estimation of daily traffic emissions in a South-European urban agglomeration during a workday. Evaluation of several "what if" scenarios. *Sci Total Environ* 2006;337:480–90.
- Kassomenos P, Vardoulakis S, Borge R, Lumberras J, Papaloukas C, Karakitsios S. Comparison of statistical clustering techniques for the classification of modelled atmospheric trajectories. *Theor Appl Climatol* 2010;102:1–12.
- Kassomenos PA, Paschalidou AK, Vlachogianni A. One-day-ahead prediction of maximum carbon monoxide concentration in urban environments. *Stoch Env Res Risk A* 2013;27:561–72.
- Kiss L, Béres I. Anthropogenic factors behind the recent population expansion of common ragweed (*Ambrosia artemisiifolia* L.) in Eastern Europe: is there a correlation with political transitions? *J Biogeogr* 2006;33:2156–7.
- Köppen W. Grundriss Der Klimakunde. Berlin: Walter De Gruyter & Co.; 1931.
- Laaidi M, Thibaudon M, Besancenot JP. Two statistical approaches to forecasting the start and duration of the pollen season of Ambrosia in the area of Lyon (France). *Int J Biometeorol* 2003;48:65–73.
- Laaidi M, Chinot T, Aegerter P. Pollen allergies, pollution and climate: literature review. *Rev Fr Allergol* 2011;51:622–8.
- Makra L, Matyasovszky I. Assessment of the daily ragweed pollen concentration with previous-day meteorological variables using regression and quantile regression analysis for Szeged, Hungary. *Aerobiologia* 2011;27:247–59.
- Makra L, Juhász M, Borsos E, Bécsi R. Meteorological variables connected with airborne ragweed pollen in Southern Hungary. *Int J Biometeorol* 2004;49:37–47.
- Makra L, Juhász M, Bécsi R, Borsos E. The history and impacts of airborne Ambrosia (*Asteraceae*) pollen in Hungary. *Grana* 2005;44:57–64.
- Makra L, Sánta T, Matyasovszky I, Damialis A, Karatzas K, Bergmann KC, et al. Airborne pollen in three European cities: detection of atmospheric circulation pathways by applying three-dimensional clustering of backward trajectories. *J Geophys Res-Atmos* 2010;115:D24220. <http://dx.doi.org/10.1029/2010JD014743>.
- Makra L, Matyasovszky I, Deák AJ. Trends in the characteristics of allergenic pollen circulation in central Europe based on the example of Szeged, Hungary. *Atmos Environ* 2011a;45:6010–8.
- Makra L, Matyasovszky I, Thibaudon M, Bonini M. Forecasting ragweed pollen characteristics with nonparametric regression methods over the most polluted areas in Europe. *Int J Biometeorol* 2011b;55:361–71.
- Mányoki G, Apatini D, Magyar D, Páldy A. A parlafűpollen becsült országos eloszlása a Parlafű Pollen Riasztási Rendszer (PPRR) szerint. (Assessed incidence of ragweed in Hungary according to the Ragweed Pollen Alarm System (RPAS)). In: Apatini D, editor. Az ÁNTSZ Aerobiológiai Hálózatának tájékoztatója, éves jelentés, kézirat. (Report of the Aerobiological Network of ÁNTSZ, annual report, manuscript. Budapest: OKI; 2011. (81 pp.).
- Matyasovszky I, Makra L. Autoregressive modelling of daily ragweed pollen concentrations for Szeged in Hungary. *Theor Appl Climatol* 2011;104:277–83.
- Minero FJG, Iglesias I, Jato V, Aira MJ, Candau P, Morales J, et al. Study of the pollen emissions of Urticaceae, Plantaginaceae and Poaceae at five sites in western Spain. *Aerobiologia* 1998;14:117–29.
- Myszkowska D. Prediction of the birch pollen season characteristics in Cracow, Poland using an 18-year data series. *Aerobiologia* 2013;29:31–44.
- Paschalidou AK, Karakitsios S, Kleanthous S, Kassomenos PA. Forecasting hourly PM10 concentration in Cyprus through artificial neural networks and multiple regression models: implications to local environmental management. *Environ Sci Pollut Res* 2011;18:316–27.
- Peternel R, Čulig J, Hrga I, Herczog P. Airborne ragweed (*Ambrosia artemisiifolia* L.) pollen concentrations in Croatia, 2002–2004. *Aerobiologia* 2006;22:161–8.
- Puc M. Artificial neural network model of the relationship between Betula pollen and meteorological factors in Szczecin (Poland). *Int J Biometeorol* 2012;56:395–401.
- Quinlan RJ. Learning with continuous classes. Proc. of the 5th Australian Joint Conference on Artificial Intelligence, Singapore; 1992. p. 343–8.
- Quinlan RJ. C4.5: programs for machine learning. San Mateo, CA: Morgan Kaufmann Publishers; 1993.
- Recio M, Docampo S, García-Sánchez J, Trigo MM, Melgar M, Cabezedo B. Influence of temperature, rainfall and wind trends on grass pollination in Malaga (western Mediterranean coast). *Agric For Meteorol* 2010;150:931–40.
- Reznik SY. Common ragweed (*Ambrosia artemisiifolia* L.) in Russia: spread, distribution, abundance, harmfulness and control measures. Ambrosie, The first international ragweed review; 200926 (http://www.zin.ru/labs/expent/pdfs/Reznik_2009_Ambrosia.pdf).
- Ribeiro H, Cunha M, Abreu I. Quantitative forecasting of olive yield in Northern Portugal using a bioclimatic model. *Aerobiologia* 2008;24:141–50.

- Rodinkova V, Palamarchuk O, Kremenska L. The most abundant Ambrosia pollen count is associated with the southern, eastern and the northern-eastern Ukraine. *Allergol Immunol* 2012;9(2–3):181.
- Rodríguez-Rajo FJ, Grewling L, Stach A, Smith M. Factors involved in the phenological mechanism of *Alnus* flowering in Central Europe. *Ann Agric Environ Med* 2009;16(2):277–84.
- Rodríguez-Rajo FJ, Astray G, Ferreiro-Lage JA, Aira MJ, Jato-Rodríguez MV, Mejuto JC. Evaluation of atmospheric Poaceae pollen concentration using a neural network applied to a coastal Atlantic climate region. *Neural Netw* 2010;23:419–25.
- Rodríguez-Rajo FJ, Aira MJ, Fernandez-Gonzalez M, Seijo C, Jato V. Recent trends in airborne pollen for tree species in Galicia, NW Spain. *Clim Res* 2011;48:281–91.
- Sánchez Mesa JA, Galán C, Hervás C. The use of discriminant analysis and neural networks to forecast the severity of the Poaceae pollen season in a region with a typical Mediterranean climate. *Int J Biometeorol* 2005;49:355–62.
- Sánchez-Mesa JA, Galán C, Martínez-Heras JA, Hervás-Martínez C. The use of a neural network to forecast daily grass pollen concentration in a Mediterranean region: the southern part of the Iberian Peninsula. *Clin Exp Allergy* 2002;32:1606–12.
- Stach A, García-Mozo H, Prieto-Baena JC, Czarnecka-Operacz M, Jenerowicz D, Silny W, et al. Prevalence of *Artemisia* species pollinosis in western Poland: impact of climate change on aerobiological trends, 1995–2004. *J Investig Allergy Clin* 2007;17:39–47.
- Stach A, Smith M, Baena JCP, Emberlin J. Long-term and short-term forecast models for Poaceae (grass) pollen in Poznań, Poland, constructed using regression analysis. *Environ Exp Bot* 2008;62:323–32.
- Vinogradova YR, Majorov SR, Khorun LV. Black book of Central Russia: alien species of flora of Central Russia (in Russian). Moscow: GEOS; 2010.
- Vlachogianni A, Kassomenos P, Karppinen A, Karakitsios S, Kukkonen J. Evaluation of a multiple regression model for the forecasting of the concentrations of NO_x and PM₁₀ in Athens and Helsinki. *Sci Total Environ* 2011;409(8):1559–71.
- Voukantis D, Niska H, Karatzas K, Riga M, Damialis A, Vokou D. Forecasting daily pollen concentrations using data-driven modeling methods in Thessaloniki, Greece. *Atmos Environ* 2010;44:5101–11.
- Voukantis D, Karatzas K, Kukkonen J, Rasanen T, Karppinen A, Kolehmainen M. Inter-comparison of air quality data using principal component analysis, and forecasting of PM₁₀ and PM_{2.5} concentrations using artificial neural networks, in Thessaloniki and Helsinki. *Sci Total Environ* 2011;409:1266–76.
- Voukantis D, Karatzas K, Jaeger S, Berger U, Smith M. Analysis and forecasting of airborne pollen-induced symptoms with the aid of computational intelligence methods. *Aerobiologia* 2013;29:175–85.
- Ziska LH, Beggs PJ. Anthropogenic climate change and allergen exposure: the role of plant biology. *Allergy Clin Immunol* 2012;129:27–32.
- Ziska LH, George K, Frenz DA. Establishment and persistence of common ragweed (*Ambrosia artemisiifolia* L.) in disturbed soil as a function of an urban–rural macro-environment. *Global Change Biol* 2007;13:266–74.
- Ziska L, Knowlton K, Rogers C, Dalan D, Tierney N, Elder MA, et al. Recent warming by latitude associated with increased length of ragweed pollen season in central North America. *Proc Natl Acad Sci U S A* 2011;108:4248–51.