



The physiological impact of high-intensity interval training in octogenarians with comorbidities

James E.M. Blackwell^{1,3}, Nima Gharahdaghi^{1,2} , Matthew S. Brook^{1,2}, Shinya Watanabe¹, Catherine L. Boereboom¹, Brett Doleman³, Jonathan N. Lund^{1,3}, Daniel J. Wilkinson^{1,2}, Kenneth Smith^{1,2}, Philip J. Atherton^{1,2}, John P. Williams^{1,3} & Bethan E. Phillips^{1,2*} 

¹MRC-Versus Arthritis Centre for Musculoskeletal Ageing Research, Royal Derby Hospital Centre, University of Nottingham, Derby, UK; ²National Institute of Health Research (NIHR), Nottingham Biomedical Research Centre (BRC), Nottingham, UK; ³Department of Surgery & Anaesthetics, Royal Derby Hospital, Derby, UK

Abstract

Background Declines in cardiorespiratory fitness (CRF) and fat-free mass (FFM) with age are linked to mortality, morbidity and poor quality of life. High-intensity interval training (HIIT) has been shown to improve CRF and FFM in many groups, but its efficacy in the very old, in whom comorbidities are present is undefined. We aimed to assess the efficacy of and physiological/metabolic responses to HIIT, in a cohort of octogenarians with comorbidities (e.g. hypertension and osteoarthritis).

Methods Twenty-eight volunteers (18 men, 10 women, 81.2 ± 0.6 years, 27.1 ± 0.6 kg·m⁻²) with American Society of Anaesthesiology (ASA) Grade 2–3 status each completed 4 weeks (12 sessions) HIIT after a control period of equal duration. Before and after each 4 week period, subjects underwent body composition assessments and cardiopulmonary exercise testing. Quadriceps muscle biopsies (*m. vastus lateralis*) were taken to quantify anabolic signalling, mitochondrial oxidative phosphorylation, and cumulative muscle protein synthesis (MPS) over 4-weeks.

Results In comorbid octogenarians, HIIT elicited improvements in CRF (anaerobic threshold: $+1.2 \pm 0.4$ ml·kg⁻¹·min⁻¹, $P = 0.001$). HIIT also augmented total FFM (47.2 ± 1.4 to 47.6 ± 1.3 kg, $P = 0.04$), while decreasing total fat mass (24.8 ± 1.3 to 24 ± 1.2 kg, $P = 0.0002$) and body fat percentage (33.1 ± 1.5 to $32.1 \pm 1.4\%$, $P = 0.0008$). Mechanistically, mitochondrial oxidative phosphorylation capacity increased after HIIT (i.e. citrate synthase activity: 52.4 ± 4 to 67.9 ± 5.1 nmol·min⁻¹·mg⁻¹, $P = 0.005$; membrane protein complexes (C): C-II, 1.4-fold increase, $P = 0.002$; C-III, 1.2-fold increase, $P = 0.03$), as did rates of MPS (1.3 ± 0.1 to $1.5 \pm 0.1\%$ ·day⁻¹, $P = 0.03$). The increase in MPS was supported by up-regulated phosphorylation of anabolic signalling proteins (e.g. AKT, p70S6K, and 4E-BP1; all $P < 0.05$). There were no changes in any of these parameters during the control period. No adverse events were reported throughout the study.

Conclusions The HIIT enhances skeletal muscle mass and CRF in octogenarians with disease, with up-regulation of MPS and mitochondrial capacity likely underlying these improvements. HIIT can be safely delivered to octogenarians with disease and is an effective, time-efficient intervention to improve muscle mass and physical function in a short time frame.

Keywords HIIT; Exercise; Disease; Ageing; Muscle; Protein synthesis

Received: 4 February 2021; Revised: 22 April 2021; Accepted: 7 May 2021

*Correspondence to: Dr Bethan E Phillips, MRC-Versus Arthritis Centre for Musculoskeletal Ageing Research, Royal Derby Hospital Centre, University of Nottingham. Derby DE22 3DT, UK. +44 (0) 1332 724676, Email: beth.phillips@nottingham.ac.uk

James E. M. Blackwell and Nima Gharahdaghi are equal first author.

John P. Williams and Bethan E. Phillips contributed equally to this study.

Introduction

Sarcopenia is characterized by a decline in skeletal muscle mass and function and is common to ageing.¹ Reflecting this, the impact of sarcopenia on older people is far reaching, leading to frailty, loss of mobility, increased risk of chronic diseases, and poorer clinical outcomes if hospitalization is required.^{2,3} In addition, cardiorespiratory fitness (CRF) also declines with ageing,⁴ and lower anaerobic threshold (AT), an indicator of CRF, is associated with worse clinical outcomes in individuals with comorbidities.⁵ Together, these maladaptations are inextricably linked to numerous detrimental health outcomes in the older adult.⁶ Further, by 2050, the number of adults over the age of 85 years will triple,¹ as will the prevalence of age-associated comorbidities (e.g. cardiovascular disease, hypertension, cancer, osteoarthritis, diabetes mellitus, osteoporosis and mobility disability⁷) and mortality risk.⁴ On this basis, there remains a critical need to identify therapeutic interventions to counteract age-associated changes on the background of multi-comorbidities.

Exercise is an optimal strategy to enhance both muscle mass and function¹ and CRF⁴ in older adults. However, these two physiological adaptations are best achieved through different modes of exercise (i.e. resistance exercise training and endurance exercise training, respectively), each of which requires a significant time commitment and training duration to achieve meaningful benefit.⁸ As a time-efficient alternative, high-intensity interval training (HIIT; encompassing brief periods of high-intensity exertions interspersed with periods of rest or active recovery^{8,9}) has emerged as a training strategy with potential to improve both muscle mass and CRF in both younger healthy individuals^{9–11} and individuals with specific diseases (e.g. cardiovascular disease,² cancer,³ and obesity⁹). In addition, in recent years, HIIT has also been shown to elicit benefits in healthy older adults.¹² However, these studies have mainly focused on ‘younger’ older adults (~70 years) and not the oldest old individuals with diseases, potentially lacking relevance to large swathes of the population with severe functional performance decrements.¹ In addition, disuse periods, which are more frequent in octogenarians (due to hospitalization/institutionalization), result in further declines in muscle mass and function, placing these oldest old individuals at higher risk of intrinsic capacity declines (e.g. physical and cognitive impairments) with subsequent lower adaptability to exercise.¹ However, to date, the efficacy of HIIT as an exercise training mode in octogenarians with comorbidities is poorly defined.

The mechanisms by which HIIT enhances muscle mass and improves CRF have been subject to intense study. For instance, HIIT-induced activation of the phosphoinositol-3 kinase-Akt-mTOR signal transduction pathway led to higher ribosomal biogenesis and muscle protein synthesis (MPS) and induced hypertrophy to a greater extent than moderate

intensity training.¹³ Further, just a single session of HIIT was shown to increase MPS, which remained elevated for up to 48 h, in healthy older men.¹⁴ In addition to the detrimental impact of advancing age on cellular processes associated with MPS,¹ proteins involved in the regulation of mitochondrial biogenesis and the electron transport chain have also been found to be down-regulated in older adults resulting in reduced capacity for cellular bioenergetics¹⁵ and associated organ system functions (i.e. CRF¹⁶). Reflecting this, HIIT for 6 weeks was shown to increase mitochondrial content and respiratory capacity in older adults.¹⁵ Furthermore, 8 weeks of HIIT, but not work-matched continuous moderate intensity training, increased mitochondrial respiration in younger adults.¹⁷ Six weeks HIIT also increased mitochondrial content as assessed by citrate synthase (CS) activity¹⁸ and mitochondrial oxidative capacity as assessed by the abundance of mitochondrial proteins and their functional capacity to produce ATP,¹⁸ resulting in increased bioenergetic efficiency of muscle.¹⁹

In summary, neither the efficacy nor mechanisms of HIIT in respect to inducing favourable physiological adaptations in ‘very’ old adults with disease (i.e. comorbid octogenarians) are well-established, despite this group representing a large proportion of our aged societies. As such, this study aimed to evaluate the impact of 4 weeks HIIT on CRF and body composition changes in octogenarians bearing diseases, while mechanistically reporting endpoints relating to mitochondrial adaptations, anabolic signalling, and MPS.

Methods

Ethics and recruitment

This study was approved by the University of Nottingham Faculty of Medicine and Health Sciences Research Ethics Committee (A14072015-SoM-MSGEM), was conducted according to the Declaration of Helsinki, and was pre-registered online (clinicaltrials.gov; NCT03138265). Participants were recruited from community groups in close geographical proximity to the study site. Before entry into the study, participants provided written informed consent to participate after all procedures, and risks were explained to them. A medical practitioner screened all participants by medical questionnaire, physical examination, routine blood haematology/biochemistry, resting blood pressure, cardiorespiratory examination, and a resting electrocardiogram. Inclusion criteria were independent community-dwelling individuals aged over 75 years and American Society of Anaesthetists (ASA) physical status classification system Grade 2 or 3 (Grade 2 = a patient with mild systemic disease; Grade 3 = a patient with severe systemic disease).²⁰ ASA grading is used clinically to assess the preoperative health

of surgical patients based on five classes from 1 (*Patient is a completely healthy fit patient*) to 5 (*A moribund patient who is not expected to live 24 h with or without surgery*). In this study, ASA grading was assigned by a blinded consultant anaesthetist. Volunteers were required to have had no change to regular medications in the month prior to or during the study period; be available for the entire study period; and be physically able to cycle on a static cycle ergometer. Participants were excluded based on the American Thoracic Society/American College of Chest Physicians (ATS/ACCP) cardiopulmonary exercise test (CPET) guidelines²¹; or if they were already undertaking >2 exercise sessions per week.

Study conduct

Following baseline measurements, a no-intervention control period of 4 weeks (CON; 28.8 ± 5.5 days) was followed by second assessment session. Participants then completed 4 weeks of HIIT (29.3 ± 3.8 days) before a final (i.e. third) assessment session (48–72 h after last session of HIIT session) (*Figure 1*). This single-group study design with a control lead-in period was used to ensure that no data sets were influenced by changes in habitual physical activity [or other behavioural influences (e.g., diet)] occurring secondary to study participation alone. Participants were asked to maintain their habitual dietary intake for the duration of the study.

Each assessment session involved collection of a blood sample, muscle ultrasound of the *m. vastus lateralis* (VL), a CPET, and assessment of resting heart rate and blood pressure.²² A dual-energy X-ray absorptiometry (DXA; Lunar Prodigy II, GE Medical Systems, Little Chalfont, UK) scan was performed after the CON and HIIT periods. Participants wore a tri-axial physical activity monitor (Actiheart, CamMtech Ltd, Cambridge, UK) for a 5 day period around the mid-point of

both CON and HIIT periods. In order to assess rates of MPS throughout each period ($n = 20$), a basal (rested/fasted) saliva sample was collected at each assessment session, with a VL muscle biopsy collected at assessment Sessions 2 and 3 from a subset of participants who volunteered to have biopsies. At assessment Session 2, a single dose (150 mL) of D₂O was consumed after saliva collection and a muscle biopsy. The initial priming dose of D₂O was followed by weekly small-volume 'top-ups' of ~50 mL (calculated from measures of each individual's body water pool turnover). Daily saliva samples were also collected for 3 days after each D₂O dose. All muscle samples were collected under sterile conditions using the conchotome biopsy technique,²³ with 1% w·v⁻¹ lidocaine as local anaesthetic. Any fat and connective tissue was rapidly dissected out and muscle was washed in ice-cold phosphate-buffered saline, blotted dry and frozen in liquid nitrogen, before storage at -80°C .

High-intensity interval training sessions

Each HIIT session lasted 16.5 min (*Figure 1*) with participants completing a total of 12 sessions (three sessions/week for 4 weeks). The HIIT protocol was performed on a cycle ergometer (Lode Corival, Lode, Groningen) and comprised a 2 min warm-up period of unloaded cycling, followed by five, 1 min exertions at 100–115% of the maximal load (watts, W) reached during their initial CPET, separated by 90 s unloaded cycling, and ending with a 2 min recovery period of unloaded cycling.²⁴ Intensity during the exertions ranged from 46 to 226 W, with men exercising at a significantly higher intensity than women (131 ± 37 vs. 82 ± 25 W, $P = 0.003$). For participants reporting a rating of perceived exertion of eight or less (on a 0–10 scale) at the end of the last interval at the mid-way point of training (71% of participants), an (10%) increase in wattage was implemented to maintain exercise intensity with progression.²⁴

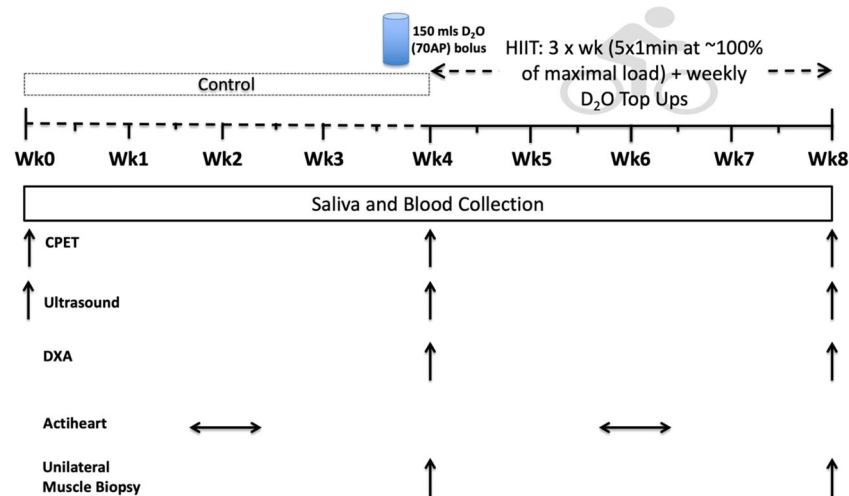


Figure 1 Schematic representation of the study protocol. Abbreviations: CPET, cardiopulmonary exercise test; DXA, dual-energy x-ray absorptiometry; HIIT, high-intensity interval training. HIIT, 3× each week at ~100% of maximal load from the second CPET.

Assessment measures

Cardiopulmonary exercise testing

A CPET was conducted in accordance with the ATS/ACCP joint statement on CPET.²¹ In brief, using a 10–20 W/min ramp protocol (based on gender, height, weight, and self-reported habitual physical activity) on a Lode Corival cycle ergometer (Lode Corival, Lode, Groningen, The Netherlands) with inline gas analyser (ZAN 680, nSpire Health, Colorado, USA), participants initially rested for 3 min followed by 2 min unloaded cycling as a warm-up. For the duration of the test, participants were instructed to pedal at 55 revolutions per min (rpm) and to continue until volitional exhaustion. Tests were considered maximal if three or more of the following criteria were met: (i) a plateau in the O₂ uptake curve despite rising VCO₂; (ii) a respiratory exchange ratio of >1.1; (iii) a heart rate over 85% age-predicted maximum, and (iv) a rating of perceived exertion ≥9 using a modified (0–10) Borg scale.²⁵ Participants were monitored throughout with a 12-lead electrocardiography, pulse oximetry, and non-invasive blood pressure monitoring. All CPET sessions were overseen by an advanced life support-trained clinician with termination criteria taken from the ATS/ACCP statement.²¹ Values obtained from the CPET included: VO₂ peak (volume of oxygen consumed at maximal exertion); AT: volume of oxygen consumed at AT, determined and analysed using a modified V-slope and ventilatory equivalents method²⁴, and maximal and sub-maximal heart rate parameters.²⁴

Muscle mass and architecture

B-mode ultrasonography (MyLab 70, Esaote Biomedica) with a 100 mm, 10–15 MHz linear array probe was used for quantification of myo-architecture. Measures of muscle thickness (MT), pennation angle (PA) and fascicle length (FL) were made²⁶ at 50% of the VL length (halfway between the greater trochanter and midpoint of the patella), with ImageJ software (ImageJ 1.51 h) used to analyse the images. DXA was used to determine total fat-free mass (FFM), total fat percentage (TFP), total fat mass (TFM), and FFM index:

$$\text{FFM (kg)/height (m)}^2$$

before and after the HIIT period using our standard DXA protocol.²⁶

Muscle protein synthesis

The saliva samples collected were processed to determine each participant's body water enrichment over the time between biopsies, to provide a measure of the precursor labelling, as described previously.²⁷ In brief, 80–90 μL of saliva was heated for 4 h at 90–100°C and then cooled on ice to produce a condensate of the body water. A high-temperature conversion elemental analyser (Thermo Finnigan, Thermo Scientific, Hemel Hempstead, UK) connected to an isotope ratio mass spectrometer (Delta V advantage, Thermo Scientific) was

employed to measure deuterium labelling in the water (0.1 μL).

To assess protein bound alanine muscle fraction enrichment, ~40 mg of muscle was homogenized in ice-cold homogenization buffer to isolate myofibrillar proteins.²⁸ Briefly, 10 min rotary mixing was followed by centrifugation at 11 000 g for 15 min at 4°C. The supernatant (sarcoplasmic fraction) was then collected for immunoblotting and the pellet was re-suspended in 500 μL mitochondrial extraction buffer and then homogenized by Dounce, and centrifuged at 1000 g for 5 min at 4°C. Insoluble collagen was separated following centrifugation from myofibrillar proteins that were solubilized in 750 μL NaOH and subsequently precipitated using 1 M perchloric acid then pelleted by centrifugation. For the plasma proteins (used to represent baseline deuterium labelling in protein), 100 μL of sample was precipitated using 100 μL ice cold ethanol and then separated from free amino acids through centrifugation. Muscle and plasma protein extracts, were hydrolyzed overnight in 0.1 M HCl and Dowex H⁺ resin at 110°C, before elution of the protein-bound amino acids, from the resin with 2 M NH₄OH then evaporated to dryness.²⁸ Dried samples were suspended in 60 μL distilled water, 32 μL methanol, and 10 μL of pyridine, and 8 μL of methyl chloroformate with intermittent vortex. The *n*-methoxycarbonyl methyl esters of the amino acids were then extracted after adding 100 μL chloroform. A molecular sieve was added for ~20 s to remove water before being transferred to vials; incorporation of deuterium into the protein bound alanine was determined by gas chromatography-pyrolysis-isotope ratio mass spectrometry (Delta V Advantage, Thermo, Hemel Hempstead, UK).²⁸

Calculation of synthetic fractional rate

Myofibrillar MPS was calculated from the deuterium enrichment (APE) in alanine in myofibrillar proteins, using the body water enrichment, from saliva (APE, corrected for the mean number of deuterium moieties incorporated per alanine, 3.7, and the dilution from the total number of hydrogens in the derivative, i.e. 11) as the average precursor labelling between subsequent muscle biopsies. The fractional synthetic rate was calculated as follows:

$$\text{FSR}(\% \cdot \text{day}^{-1}) = -\ln \left(\frac{1 - \left[\frac{(\text{APE}_{\text{Ala}})}{\text{APE}_{\text{p}}} \right]}{t} \right),$$

where APE_{Ala} is deuterium enrichment of protein-bound alanine, APE_p is mean precursor enrichment of the body water over the period, and *t* is the time between biopsies. Absolute synthetic rate was estimated as

$$\text{ASR}(\text{g} \cdot \text{day}^{-1}) = \frac{\text{FSR}}{100} \times \text{Total.FFM} \times \frac{12.4}{100},$$

where alkali soluble protein of 12.4% total FFM was assumed.²⁸

Immunoblotting for anabolic signalling and mitochondrial oxidative phosphorylation

To prepare samples for immunoblotting, spectrophotometry was used to determine protein concentrations of sarcoplasmic fractions and samples were diluted with 3× Laemmli loading buffer to 1 mg·mL⁻¹, followed by heating at 95°C for 5 min.²⁹

To measure mitochondrial oxidative phosphorylation (OxPhos), after homogenization of ~10 mg muscle in radioimmunoprecipitation assay buffer (50 mM Tris HCl, PH 7.4, 150 mM NaCl, 1% Triton X-100, 0.5% sodium deoxycholate, 0.1% sodium dodecyl sulfate (SDS)) followed by quick vortex and 10 min sonication, samples were centrifuged at 6000 *g* for 3 min, and then supernatant was used for protein concentration determination using Pierce™ BCA Protein Assay Kit (23225, Thermo Scientific). Samples were diluted with 3× Laemmli loading buffer to 0.5 mg·mL⁻¹, followed by heating at 40°C for 5 min.

For the measurements of anabolic signalling proteins and OxPhos, precisely 10 µg of samples were loaded onto Criterion XT Bis-Tris-12% SDS-polyacrylamide gel electrophoresis (SDS-PAGE) gels (Bio-Rad) for electrophoresis at 185 V for 45 min. After electrophoresis, samples were transferred onto polyvinylidene difluoride membranes for 45 min at 100 V. Subsequently, 2.5% low-fat milk, which was diluted in Tris-buffered saline Tween-20 was used to soak and block polyvinylidene difluoride membranes for 1 h, at ambient temperature and then incubated in the following primary antibodies overnight at 4°C (1:2000 dilution in 2.5% BSA in TBS-T): rabbit phospho-protein kinase B (Akt)^{Ser473} (#9271), phospho-p70 S6 Kinase (p70S6K)^{Thr389} (#9234), phospho-4E-BP1^{Thr37/46} (#2855), phospho-AMP-activated protein kinase (AMPKα)^{Thr172} (#2531), phospho-forkhead box O3 (FoxO3a)^{Ser253} (#13129), phospho-tuberin/TSC2^{Thr1462} (#3617) (all from Cell Signalling Technology, Leiden, The Netherlands), muscle-specific F-box protein (MAFbx) (#AP2041), muscle RING-finger protein-1 (MURF-1) (#101AP) (both from ECM Biosciences, Versailles, KY, USA), mouse oxidative phosphorylation (OxPhos) (ab110413, Abcam, Cambridge, MA, USA). After overnight incubation, membranes were washed for 3 × 5 min in TBS-T, soaked in horseradish peroxidase (HRP)-conjugated secondary antibody (New England Biolabs; 1:2000 in 2.5% bovine serum albumin (BSA) in Tris-buffered saline Tween-20) for 1 h, before 3 × 5 min washes in TBS-T. In order to quantify band intensity (Chemidoc MP, Bio-Rad, Hemel Hempstead, UK), membranes were exposed to Chemiluminescent HRP substrate (Millipore Corp., Billerica, MA, USA) for one min. Relative arbitrary units (AU) were normalized to coomassie-stained membranes and to cross gel loading control.²⁹

Mitochondrial citrate synthase activity

Citrate synthase (CS) activity was measured as previously described.³⁰ Briefly, after homogenization of 3–5 mg muscle

in 1% Triton-X-100 buffer, samples were centrifuged at 22 000 *g* for 3 min and the supernatant used for further analysis. Thereafter, 300 µL master mix containing 28% 0.05 M TRIS buffer (pH 7.6), 1.3% one mM 5,5′ dithiobis-2-nitrobenzoic acid (DTNB), 7% acetyl-coenzyme A (1.36 mg·mL⁻¹), 0.8% oxaloacetate (9.88 mg·mL⁻¹), and 63% ddH₂O was measured at 412 nm as the blank. Finally, 20 µL of separated supernatant was used to measure the maximum rate of reaction (*V* max), compared with whole protein content.

Qualitative data

In addition to our physiological endpoints, at each assessment session participants completed the Dukes Activity Score Index (DASI) questionnaire³¹ to assess subjective functional status and the EuroQoL Group EQ-5D-5L questionnaire (EQ-5D-5L) to assess health status.³² Participants also completed a HIIT acceptability questionnaire as used previously²⁴ at assessment Session 3 (Supporting information, *Table S1*).

Statistical analysis

Assuming an 18% coefficient of variation,²⁴ to detect a mean clinically significant increase in AT of 2 mL·kg⁻¹·min⁻¹ following HIIT,⁶ with 1-β = 0.8 and α = 0.05 significance, we required 28 complete data sets; this was achieved. Data are expressed as mean ± SEM; and normality of data was tested using D’Agostino and Pearson omnibus test. Repeated measure ANOVA with one factor (time) were used to compare the changes during CON and HIIT periods. Paired Student’s *t* tests were used to test pre vs. post HIIT changes. Correlations were assessed using Pearson’s product moment correlation coefficient. The significance level was defined as *P* ≤ 0.05, and all statistical analyses were performed using GraphPad Prism 8.4.3 (La Jolla, CA, USA).

Results

Participants and HIIT

Twenty-eight participants completed the study (physiological characteristics and comorbidities outlined in *Table 1*). Mean heart rate as a percentage of age-predicted maximum³³ was 96.6%, 95.7%, and 94.8% during HIIT Sessions 2, 6, and 10, respectively, confirming high-intensity exercise was being performed.³³ Participants completed an average of 11.5 ± 0.9 sessions (range 11–12) out of the 12 available.

Cardiorespiratory fitness

AT (0.94 ± 0.03 to 1.1 ± 0.04 L·min⁻¹, *P* = 0.001; *Figure 2C*) and VO₂ peak (1.6 ± 0.1 to 1.7 ± 0.1 L·min⁻¹, *P* = 0.008;

Table 1 Participant characteristics and comorbidities

| | | | |
|----------------------------------|----------------------------------|-------------------|---|
| Age (years) | | 81.2 (0.6) | |
| Gender (men: women) | | 18: 10 | |
| BMI (kg·m ⁻²) | | 27.1 (0.6) | |
| ALMI (kg·m ⁻²) | | 7.4 (0.1) | |
| ASA Grade (2:3) | | 21:7 | |
| SBP | | 150 (3.2) | |
| DBP | | 79 (1.7) | |
| Resting HR | | 67 (2) | |
| VO ₂ peak (mL/kg/min) | | 22.1 (1.2) | |
| VO ₂ AT (mL/kg/min) | | 13.4 (0.5) | |
| Dominant handgrip strength (kg) | | 27.4 (8.7) | |
| SPPBT score | | 9.8 (2) | |
| DASI | | 41.2 (11) | |
| Comorbidities and medications | | | |
| System | Pathology | Number | |
| Cardiovascular | Hypertension | 20 | |
| | Ischaemic heart disease | 6 | |
| | Heart failure | 2 | |
| | Valvular disease | 2 | |
| | Pacemaker | 1 | |
| | Abdominal aortic aneurysm | 1 | |
| | Respiratory | COPD | 1 |
| | | Asthma | 2 |
| | | Previous lung TB | 2 |
| | Endocrine | Thyroid disorders | 4 |
| Diabetes mellitus | | 5 | |
| Dyslipidaemia | | 5 | |
| Gout | | 2 | |
| Musculoskeletal | Osteoarthritis | 8 | |
| | Large joint replacement | 6 | |
| Obesity | BMI > 25 (overweight) | 14 | |
| | BMI > 30 (obese Class 1) | 6 | |
| Regular medications | Inhaled bronchodilators | 3 | |
| | Statins | 13 | |
| | Calcium channel blockers | 11 | |
| | Beta-blockers | 3 | |
| | Amiodarone/digoxin | 2 | |
| | ACE-inhibitors/AT1/2 antagonists | 7 | |
| | Diuretics | 7 | |
| | Metformin | 2 | |
| | Thyroxine | 4 | |

Abbreviations: ALMI, appendicular lean mass index [sum of the lean tissue in arms and legs (kg) divided by height (m)²]; ASA, American Society and Anaesthetists; AT, anaerobic threshold; BMI, body mass index; COPD, chronic obstructive pulmonary disease; DASI, Dukes Activity Status Index; DBP, diastolic blood pressure; HR, heart rate; SBP, systolic blood pressure; SPPBT, short physical performance battery tests; TB, tuberculosis. Values are mean (SEM).

Figure 2D), both absolute and relative to bodyweight (AT: 12.8 ± 0.5 to 14.1 ± 0.5 mL·kg⁻¹·min⁻¹, $P = 0.008$; Figure 2A, VO₂ peak: 21.3 ± 1.3 to 23.7 ± 1.3 mL·kg⁻¹·min⁻¹, $P = 0.009$; Figure 2B) increased significantly with HIIT; with a decrease in both absolute and relative measures of AT over CON (vs. the first assessment, absolute: 1.0 to 0.94 L·min⁻¹, $P = 0.005$; Figure 2C, relative: 13.5 ± 0.5 to 12.8 ± 0.5 mL·kg⁻¹·min⁻¹, $P = 0.01$; Figure 2A). HIIT also elicited significant increases in maximum wattage achieved at CPET (105.1 ± 7 to 117.7 ± 8 W, $P < 0.0001$; Figure 2E) and reductions in systolic blood pressure (147 ± 3 to 139 ± 3 mmHg, $P = 0.001$; Figure 2F) and resting heart rate (69.8 ± 2 to 64.4 ± 2 beat·min⁻¹, $P = 0.001$; Figure 2H). Sub-maximal (at 25%, 50%, and 75% maximum wattage achieved at initial CPET) heart rates were also significantly lower

following HIIT (25%: -5 beat·min⁻¹, $P < 0.05$; 50%: -3 beat·min⁻¹, $P = 0.05$; 75%: -5 beat·min⁻¹, $P < 0.01$).

Mitochondrial oxidative phosphorylation capacity

The HIIT enhanced protein levels of OxPhos complex (C)II (1.4 ± 0.1 -fold change, $P = 0.002$) and CIII (1.2 ± 0.08 -fold change, $P = 0.03$), with a numerical increase in CI (1.1 ± 0.05 -fold change, $P = 0.09$) and CV (1.1 ± 0.05 -fold change, $P = 0.09$) (Figure 3A–3E). HIIT also augmented mitochondrial density (estimated by changes in CS activity: 52.4 ± 4 to 67.9 ± 5.1 nmol·min⁻¹·mg⁻¹, $P = 0.005$; Figure 3F), with a significant correlation between increases in CIII ($r = 0.56$, $P = 0.01$) and CV ($r = 0.51$, $P = 0.03$;

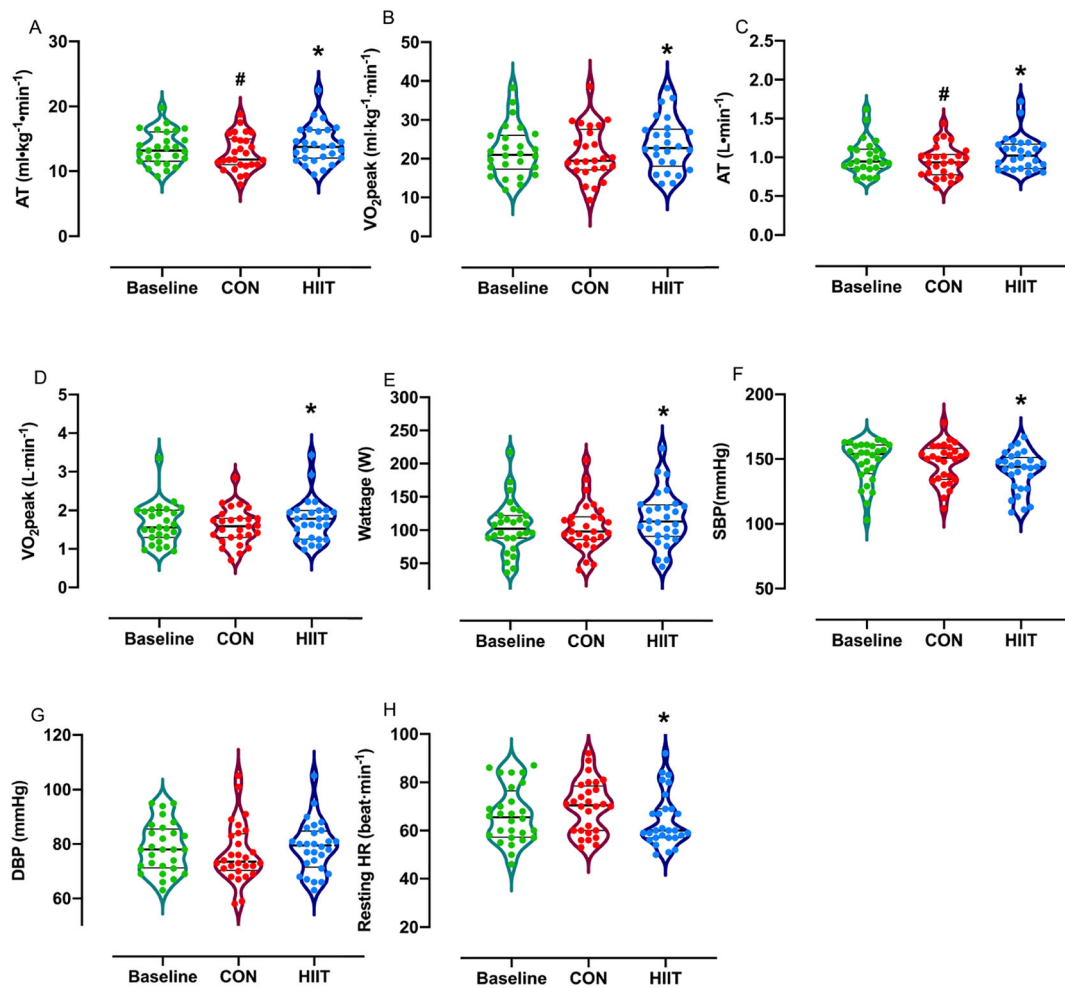


Figure 2 Violin plots represent a full distribution of raw data (dots), median (central line), and interquartile range (lower and upper lines) of cardio-respiratory parameters at baseline, after a control period (CON), and after high-intensity interval training (HIIT). Abbreviations: AT, anaerobic threshold; DBP, diastolic blood pressure; HR, heart rate; SBP, systolic blood pressure. Analysis via repeated measure ANOVA. * $P < 0.01$ vs. CON, # $P < 0.01$ vs. baseline.

Figure 3G) and changes in VO₂ peak and also between increases in CIV ($r = 0.60$, $P = 0.01$) and CV ($r = 0.56$, $P = 0.01$; Figure 3H) and changes in AT.

Body composition and muscle architecture

Significant increases in total FFM (47.2 ± 1.4 to 47.6 ± 1.3 kg, $P = 0.04$; Figure 4A), FFM index (28.2 ± 0.6 to 28.5 ± 0.6 kg·m⁻¹, $P = 0.03$; Figure 4B) and reductions in TFM (24.8 ± 1.3 to 24 ± 1.2 kg, $P = 0.0002$; Figure 4C) and TFP (33.1 ± 1.5 to $32.1 \pm 1.4\%$, $P = 0.0008$; Figure 4D) were observed after HIIT, with no correlation between changes in AT and changes in FFM ($r = 0.05$, $P = 0.79$, Figure 4E). Measures of local skeletal muscle remodelling (MT, FL, and PA) did not change during either period (i.e. CON or HIIT) (Table 2).

Muscle protein synthesis

The MPS was significantly higher during HIIT than CON (1.3 ± 0.1 to $1.5 \pm 0.1\%$ ·day⁻¹, $P = 0.03$; Figure 5A). Furthermore, absolute synthetic rate was significantly increased after HIIT (75.7 ± 5.5 to 87.1 ± 4.3 g·day⁻¹, $P = 0.03$; Figure 5B). There was a significant correlation between changes in MPS and FFM gains ($r = 0.52$, $P = 0.03$; Figure 5D).

Mechano-signals and anabolic/catabolic signalling

Phosphorylation of AKT^{Ser473} (1.6 ± 0.1 -fold change, $P = 0.004$; Figure 6A), p70S6K^{Thr389} (1.3 ± 0.1 -fold change, $P = 0.02$; Figure 6B) and 4EBP1^{Thr37/46} (1.3 ± 0.1 -fold change, $P = 0.01$; Figure 6C) was increased after HIIT. Conversely, there were no significant changes in

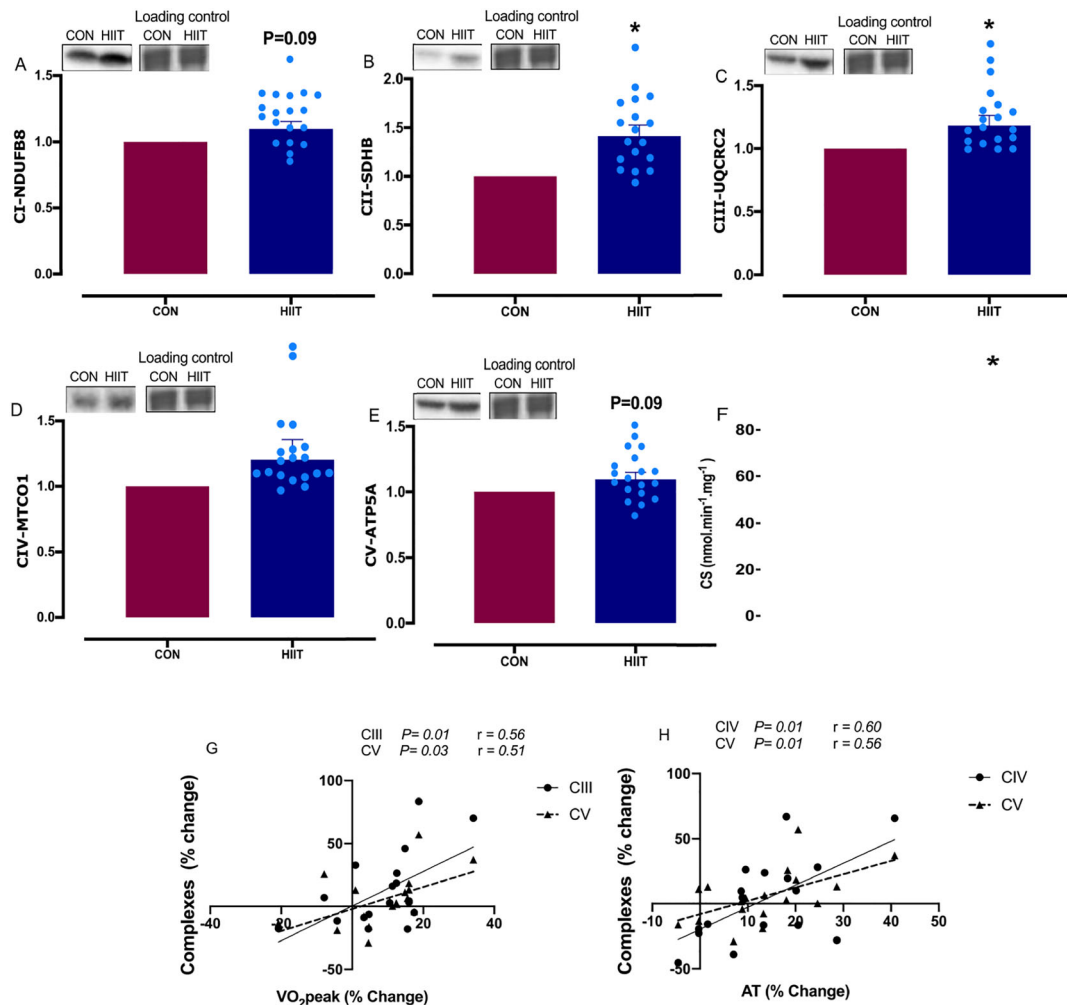


Figure 3 Markers of mitochondrial oxidative phosphorylation amounts after a control period (CON) or high-intensity interval training (HIIT). (A) NADH dehydrogenase (ubiquinone) 1 β subcomplex 8 (NDUF8; C-I); (B) succinate dehydrogenase subunit B, SDHB (C-II); (C) ubiquinol-cytochrome *c* reductase core protein 2 (UQCRC2; C-III); (D) mitochondrial cytochrome *c* oxidase subunit 1 (MTCO1; C-IV); (E) ATP synthase subunit 5 α (ATP5A; C-V); (F) citrate synthase (CS) activity; (G) and (H) correlation between change in mitochondrial complexes and cardiorespiratory fitness measures changes. Values are means \pm SEM. Analysis via paired Student's *t* tests and Pearson's correlation coefficient. **P* < 0.05. vs. CON. Data are accompanied by representative blots and a typical Coomassie stain.

phosphorylation of tuberin/TSC2^{Thr1462}, forkhead box O3 (FoxO3a)^{Ser253}, AMPK α ^{Thr172}, MAFbx, or Murf-1 after HIIT (Figure 6D–6H).

Habitual activity levels

Based on our acceptance criteria of >80% of minute-by-minute physical activity data needing to be available for a 24 h recording to be accepted, 12 subjects were included in this analysis.²⁸ Out with the HIIT sessions, there was no significant difference in the number of activity counts per day during CON vs. HIIT (19 367 \pm 7824 vs. 17 592 \pm 8677, *P* = 0.23), nor in the amount of time spent at various metabolic equivalent (MET) levels (min/day)³⁴ (all CON vs. HIIT: <1.5 METs:

1194 \pm 131 vs. 1201 \pm 163; 1.5 to 3 METs: 128 \pm 66 vs. 121 \pm 88; 3 to 6 METs: 29 \pm 36 vs. 46 \pm 66; 6 to 10.2 METs: 0.26 \pm 0.62 vs. 0.21 \pm 0.46; >10.2 METs: 0.31 \pm 0.98 vs. 0.02 \pm 0.04, all *P* > 0.05) suggesting that observed changes over the HIIT period were due HIIT per se and not changes in habitual physical activity.

Quality of life

The HIIT increased self-rated health status using the 5EQ-5DL-5L questionnaire (85 [80–90] to 90 [81.25–90], *P* < 0.05) with no significant change across CON. There was no change in weighted health state index during CON or HIIT.

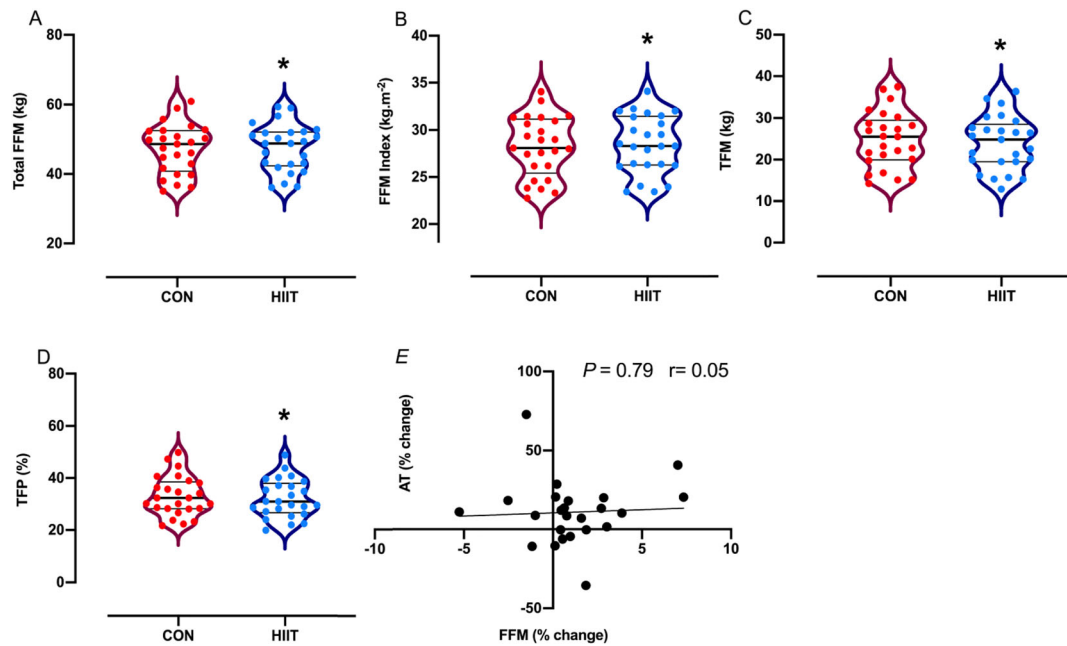


Figure 4 (A–D) Violin plots represent a full distribution of raw data (dots), median (central line), and interquartile range (lower and upper lines) of body composition after a control period (CON) and after high-intensity interval training (HIIT). (E) Correlation between fat-free mass (FFM) and anaerobic threshold (AT) changes with HIIT. Abbreviations: TFM, total fat mass; TFP, total fat percentage. Analysis via paired Student's *t* tests. **P* < 0.05 vs. CON.

Table 2 Muscle architecture measures

| Parameter | Assessment | | <i>P</i> value | Assessment | |
|-----------------------|------------|------------|----------------|------------|----------------|
| | Baseline | CON | | HIIT | <i>P</i> value |
| Muscle thickness (cm) | 1.9 ± 0.1 | 1.9 ± 0.1 | 0.92 | 2 ± 0.1 | 0.25 |
| Fascicle Length (cm) | 7.2 ± 0.2 | 7.1 ± 0.2 | 0.75 | 7.3 ± 0.2 | 0.34 |
| Pennation angle (°) | 13.4 ± 0.4 | 13.8 ± 0.5 | 0.92 | 14.2 ± 0.4 | 0.46 |

Abbreviations: CON, after a 4 week no-intervention control period; HIIT, after a 4 week high-intensity interval training period. Values are mean ± SEM.

Discussion

No study had previously examined the effect of HIIT in relation to both FFM and CRF and associated mechanisms in octogenarians with comorbidities in both sexes. Herein, we report that just 4-weeks of HIIT positively modulated CRF and FFM, ostensibly via enhancing protein accretion and mitochondrial bioenergetics; thereby offering a potential strategy to offset two well-established age-related physiological deteriorations in octogenarians with diseases.

Cardiorespiratory fitness is the culmination of VO₂ peak, AT, and exercise capacity and is an attribute known to decrease the risk of morbidity and mortality⁴; as such, we determined the role of HIIT in relation to aspects of CRF and established that HIIT augmented AT, VO₂ peak, and exercise capacity. In previous work, Sloth *et al.*,³⁵ reported that short-term, low-volume HIIT ranging from 2 to 8 weeks in duration was effective for improving VO₂ peak (~4–13%) in healthy sedentary and recreationally active adults, while HIIT

for 4 weeks augmented VO₂ peak (9.6%) and AT (13%) in healthy older adults.²⁴ Similarly, in our study, AT was augmented (10%) over 4 weeks HIIT; which has been shown to be a good predictor of survival in patients with comorbidities, with a value of <11 mL·kg⁻¹·min⁻¹ considered the threshold for classifying surgical patients as high risk of mortality.⁵ These results are potentially indicative of wider implications for long-term healthy ageing as improving CRF is associated with a lower risk of all-cause and CVD mortality.³⁶ In addition to improving CRF components, our HIIT protocol also reduced blood pressure. Prior to this study, the effect of short-term HIIT on blood pressure was inconclusive²⁴; nevertheless, we have now provided supporting evidence that in older individuals with disease short-term HIIT reduces systolic blood pressure, which is associated with lower long-term life-threatening risk, that is, from total mortality and stroke.³⁷

In assessing muscle-level mechanisms underlying augmentation in CRF, we found that HIIT increased mitochondrial content and aspects of proteostasis even in our 'very' old

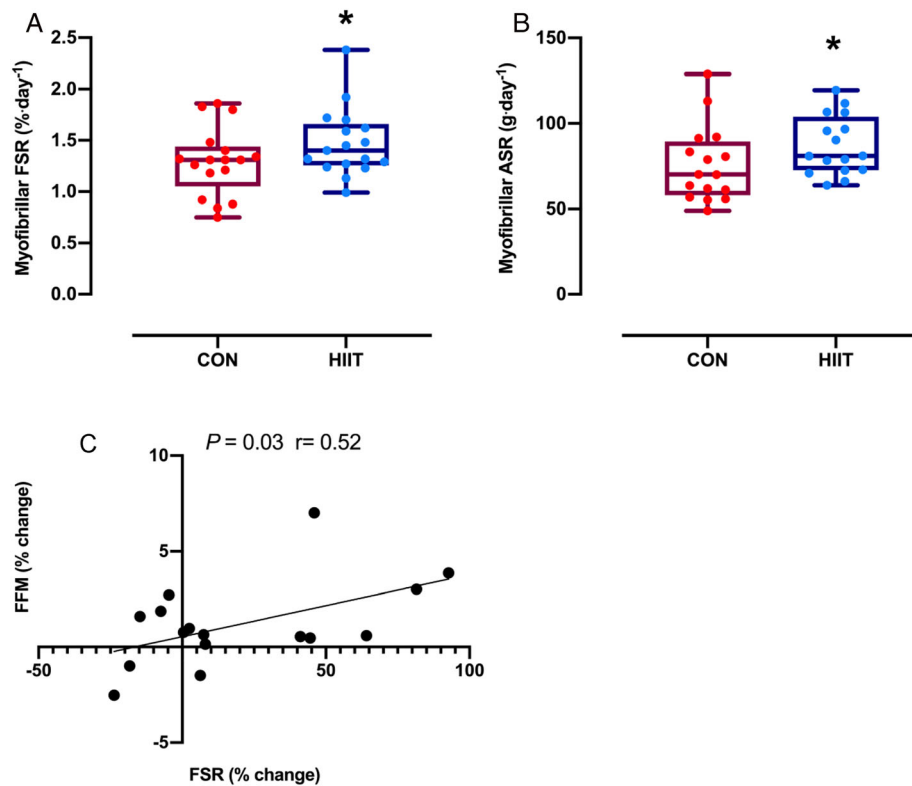


Figure 5 Box plot of (A) fractional synthesis rate (FSR) and (B) absolute synthetic rate (ASR) during a control period (CON) and high-intensity interval training (HIIT). (C) Correlation between fat-free mass (FFM) and FSR changes with HIIT. Distribution of raw data (dots) are represented as median (central line), interquartile range (box margins), and adjacent values (whiskers). Analysis via paired Student's *t* tests and Pearson's correlation coefficient. **P* < 0.05 vs. CON.

comorbid adults. Muscle mitochondria are subject to age-related remodelling; for instance, ageing is associated with decreases in mitochondrial biogenesis and oxidative capacity³⁸ and mitochondrial enzyme activity (e.g. CS), resulting in impaired mitochondrial function³⁹ (especially in individuals older than 80 years suffering from severe muscle loss, chronic diseases, or orthopaedic issues⁴⁰). Exercise, including HIIT, is well known to induce mitochondrial adaptations. For instance, Broskey *et al.*, showed that trained older individuals had significantly greater mitochondrial content and function, which correlated with exercise efficiency.⁴¹ Further, HIIT for 2 weeks increased CS activity and mitochondrial protein C-IV abundance,⁴² while longer term (6 weeks) HIIT increased VO₂ peak, CS activity, and C-IV abundance in younger (<65 years) adults.¹⁵ In older adults, 12 weeks HIIT increased the abundance of mitochondrial C-I, II, IV, and V and CS in older adults 65–76 years⁴³ and those >73 years⁴⁴; however, these individuals were free from disease. Given these and other studies (e.g. 16 weeks traditional endurance training increased VO₂ peak and CS activity⁴⁵), there is clearly a robust relationship between CRF and muscle mitochondrial density.⁴⁶ In our study, HIIT augmented CS activity and mitochondrial protein C-II and C-III, with a trend towards an increase in C-I (important component of longevity and health⁴⁷) and C-V.

C-I improvements alone account for approximately half of all augmentations in OxPhos,⁴⁷ with OxPhos capacity important in preventing the accumulation of free radicals and damaged organelles that could negatively impact muscle function, particularly in ageing.¹⁶ Therefore, in line with other studies,⁴⁸ we have shown that HIIT is a potent intervention for the up-regulation of cellular oxidative capacities which led to an increase in CRF⁴⁹ in octogenarians with disease.

Given established links between ageing and anabolic resistance (to both nutrition and exercise)⁵⁰ and subsequent muscle loss known to lead to long-term health challenges,⁵¹ we postulated that short-term HIIT would lead to increases in whole-body FFM via altered muscle protein metabolism and decreases in TFM in comorbid octogenarians. Prior work demonstrated the ability of 3 months HIIT to impact multiple body composition components (e.g. 1% increase in FFM and 5% decrease in TFM) in both pre-menopausal and post-menopausal women.⁵² Consistent with this thesis, HIIT has been shown to increase FFM (1–3%) in healthy young and older adults (20–75 years),^{9–11} with the highest increases in younger cohorts; indicating diminishing adaptation with ageing.⁵⁰ Nonetheless, the efficacy of this training mode in those with comorbidities had not previously been investigated. The physiological impact of comorbidities

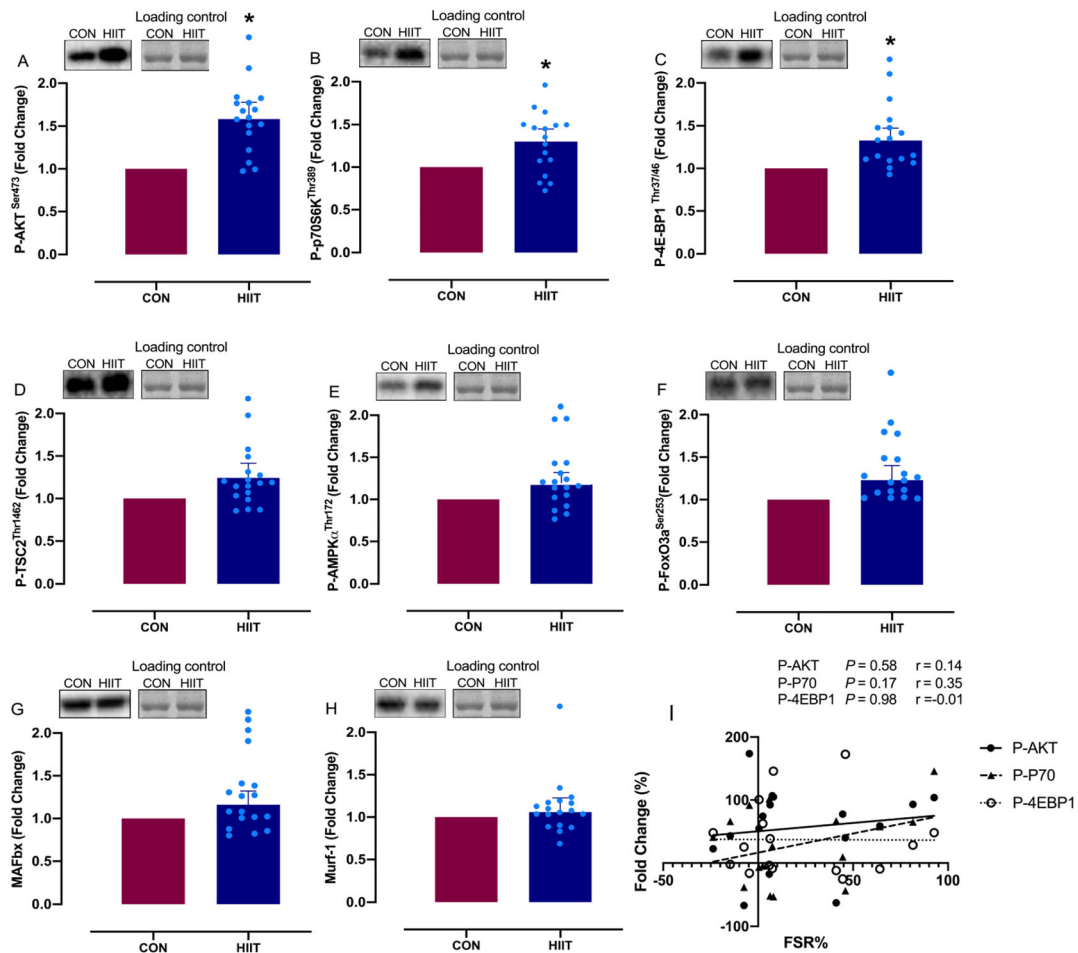


Figure 6 (A–H) Changes in intramuscular signalling pathways before and after 4 weeks high-intensity interval training (HIIT). (I) Correlation between change in phosphorylation and fractional synthesis rate (FSR) changes with HIIT. Values are means \pm SEM. Analysis via paired Student’s *t* tests and Pearson’s correlation coefficient. **P* < 0.05 vs. CON. Data are accompanied by representative blots and a typical Coomassie stain.

(e.g. reduced anabolic responses, increased net muscle protein breakdown, and associated FFM losses^{1,53}), and that in older adults this insult is adjuvant to the detrimental processes of advanced chronological ageing blunting the efficacy of exercise training⁵⁴ (including HIIT¹), may explain the attenuated (albeit notable and significant) increases in FFM (~0.8%), in our study.

In assessing the mechanisms underlying the anabolic effects of HIIT in octogenarians with disease, we demonstrated that HIIT augments MPS.¹ The logical extrapolation of a sustained increase in net muscle protein deposition after HIIT is a modest increase in FFM and also VO₂ peak,¹⁴ entirely in line with our body composition and CRF data. In support of these findings, although based on acute (up to 24 h) and not chronic measures of MPS, a single HIIT session has previously been shown to increase MPS in healthy ~65 years men,¹⁴ with further supportive work in pre-clinical animal models, for example, 8 weeks HIIT upregulated MPS and

related signalling pathways in middle-aged rats.¹³ As such, there was already some evidence of physiological adaptations to HIIT falling somewhere between resistance and aerobic training on the ‘exercise spectrum’, that is, HIIT stimulates adaptations traditionally associated with both aerobic and resistance exercise training.¹⁴ Hereby, our results demonstrate the efficacy of this training mode to elicit net protein accretion, even in comorbid octogenarians with disease, via elevated chronic MPS. In order to explore the mechanisms underpinning increases in MPS, we investigated aspects of translational ‘efficiency’.⁵⁵ It is noteworthy from past work that activation of these molecular transducers is blunted in older age^{28,50} and that in the present study, HIIT was able to repeal these impairments. In support of this, HIIT augmented Akt–mTOR signalling-activity (which regulates MPS¹),¹³ presumably explaining enhanced FFM gains and suggesting that HIIT is a potent stimulus for inducing anabolic responses in skeletal muscle via increasing the efficiency of

signal transduction.⁵⁶ Supporting this notion, anabolic signalling proteins⁵⁷ after 4 weeks HIIT remained elevated ~72 h after the final HIIT session when compared with before training, as has been reported previously.⁵⁸ This prolonged pro-anabolic signalling profile may explain the increases in FFM observed in this study.

We do acknowledge some limitations to our study. First, our DXA-derived data showing small changes in FFM must be interpreted with caution given the imprecision of DXA as a tool to measure muscle mass based on the DXA assumption that all non-fat and non-bone FFM is skeletal muscle mass.^{59,60} Further, as protein intake > the recommended daily allowance increases muscle strength and mass in older individuals,^{61,62} and that amino acid sufficiency is required for optimal hypertrophic responses to exercise training,⁶³ the lack of dietary intake data is a further limitation. There is potential that adjuvant protein nutrition, in those with low intake, may potentiate favourable adaptations to HIIT, and this should be explored in future studies.

Conclusions

Short-term/low-volume HIIT is an effective intervention in very old individuals with comorbidities. Our short-term HIIT regime was well-tolerated and could be useful in peri-operative and pre-/rehabilitation settings in octogenarians with comorbidities, with no adverse safety events occurring in this study.⁶⁴ This adds to the evidence that HIIT is safely deliverable to people with disease^{2,6} and in older age⁴³ and is in keeping with data from large-scale studies using HIIT in cardiac rehabilitation.² Finally, we revealed the likely mechanisms underlying the effect of HIIT in relation to 'overcoming' aspects of age-related anabolic resistance which result in an improvement in CRF and body composition, vis-à-vis, elevating MPS, enhancing translational efficiency, and improving cellular oxidative capacities. We

propose our HIIT protocol should now be subject to larger trials with direct clinical outcome endpoints.

Acknowledgements

We would like to thank Mrs Amanda Gates for her assistance with this study. The authors of this manuscript certify that they comply with the ethical guidelines for authorship and publishing in the *Journal of Cachexia, Sarcopenia and Muscle*.⁶⁵

Funding

This research was supported by the MRC Versus Arthritis Centre for Musculoskeletal Ageing Research (grant numbers MR/P021220/1 and MR/R502364/1), the Dunhill Medical Trust (R468/0216) and the National Institute for Health Research Nottingham Biomedical Research Centre.

Online supplementary material

Additional supporting information may be found online in the Supporting Information section at the end of the article.

Table S1: HIIT Acceptability Questionnaire

Conflict of interest

The authors have declared that no conflict of interest exists.

References

- Valenzuela PL, Castillo-García A, Morales JS, Izquierdo M, Serra-Rexach JA, Santos-Lozano A, et al. Physical exercise in the oldest old. *Compr Physiol* 2011;**9**:1281–1304.
- Wisløff U, Støylen A, Loennechen J, Bruvold M, Rognum Ø, Haram P, et al. Superior cardiovascular effect of aerobic interval training versus moderate continuous training in heart failure patients: a randomized study. *Circulation* 2007;**115**:3086–3094.
- Devin JL, Sax AT, Hughes GI, Jenkins DG, Aitken JF, Chambers SK, et al. The influence of high-intensity compared with moderate-intensity exercise training on cardiorespiratory fitness and body composition in colorectal cancer survivors: a randomised controlled trial. *J Cancer Surviv* 2016;**10**:467–479.
- Laukkanen JA, Zaccardi F, Khan H, Kurl S, Jae SY, Rauramaa R. Long-term change in cardiorespiratory fitness and all-cause mortality: a population-based follow-up study. *Mayo Clinic Proceedings* 2016.
- Older P. Anaerobic threshold, is it a magic number to determine fitness for surgery? *Perioperat Med* 2013;**2**:1–14.
- Kothmann E, Batterham A, Owen S, Turley A, Cheesman M, Parry A, et al. Effect of short-term exercise training on aerobic fitness in patients with abdominal aortic aneurysms: a pilot study. *Br J Anaesth* 2009;**103**:505–510.
- Jaul E, Barron J. Age-related diseases and clinical and public health implications for the 85 years old and over population. *Front Public Health* 2017;**5**:335.
- Gillen JB, Gibala MJ. Is high-intensity interval training a time-efficient exercise strategy to improve health and fitness? *Appl Physiol Nutr Metab* 2014;**39**:409–412.
- Buckinx F, Gouspillou G, Carvalho LP, Marcangeli V, El Hajj Boutros G, Dulac M, et al. Effect of high-intensity interval

- training combined with l-citrulline supplementation on functional capacities and muscle function in dynapenic-obese older adults. *J Clin Med* 2018;**7**:561.
10. Larsen S, Danielsen J, Søndergård SD, Sjøgaard D, Vigelsøe A, Dybbøe R, et al. The effect of high-intensity training on mitochondrial fat oxidation in skeletal muscle and subcutaneous adipose tissue. *Scand J Med Sci Sports* 2015;**25**: e59–e69.
 11. Donati Zeppa S, Sisti D, Amatori S, Gervasi M, Agostini D, Piccoli G, et al. High-intensity interval training promotes the shift to a health-supporting dietary pattern in young adults. *Nutrients* 2020;**12**:843.
 12. Robinson MM, Dasari S, Konopka AR, Johnson ML, Manjunatha S, Esponda RR, et al. Enhanced protein translation underlies improved metabolic and physical adaptations to different exercise training modes in young and old humans. *Cell Metab* 2017;**25**:581–592.
 13. Cui X, Zhang Y, Wang Z, Yu J, Kong Z, Ruzic L. HIIT changes the expression of MuRF1 and MAFBx proteins and proteins involved in the MTOR pathway and autophagy in rat skeletal muscle. *Exp Physiol* 2019;**104**:1505–1517.
 14. Bell KE, Séguin C, Parise G, Baker SK, Phillips SM. Day-to-day changes in muscle protein synthesis in recovery from resistance, aerobic, and high-intensity interval exercise in older men. *J Gerontol Ser A* 2015;**70**:1024–1029.
 15. Chrøis KM, Dohlmann TL, Sjøgaard D, Hansen CV, Dela F, Helge JW, et al. Mitochondrial adaptations to high intensity interval training in older females and males. *Eur J Sport Sci* 2020;**20**:135–145.
 16. Joseph AM, Adhietty PJ, Buford TW, Wohlgemuth SE, Lees HA, Nguyen LMD, et al. The impact of aging on mitochondrial function and biogenesis pathways in skeletal muscle of sedentary high-and low-functioning elderly individuals. *Aging Cell* 2012;**11**:801–809.
 17. Daussin FN, Zoll J, Dufour SP, Ponsot E, Lonsdorfer-Wolf E, Doutreleau S, et al. Effect of interval versus continuous training on cardiorespiratory and mitochondrial functions: relationship to aerobic performance improvements in sedentary subjects. *Am J Physiol Regul Integr Comp Physiol* 2008;**295**:R264–R272.
 18. Granata C, Oliveira RS, Little JP, Renner K, Bishop DJ. Training intensity modulates changes in PGC-1 α and p53 protein content and mitochondrial respiration, but not markers of mitochondrial content in human skeletal muscle. *FASEB J* 2016;**30**:959–970.
 19. Fiorenza M, Lemminger AK, Marker M, Eibye K, Marcello Iaia F, Bangsbo J, et al. High-intensity exercise training enhances mitochondrial oxidative phosphorylation efficiency in a temperature-dependent manner in human skeletal muscle: implications for exercise performance. *FASEB J* 2019;**33**:8976–8989.
 20. Daabiss M. American Society of Anaesthesiologists physical status classification. *Indian J Anaesth* 2011;**55**:111–115.
 21. Ross RM. ATS/ACCP statement on cardiopulmonary exercise testing. *Am J Respir Crit Care Med* 2003;**167**:1451, author reply 1451.
 22. McManus R, Lacy P, Clark C, Chapman N, Lewis P. British and Irish Hypertension Society Blood Pressure Measurement Working Party. Reporting of blood pressure monitor validation studies. *Blood Press Monit* 2018;**23**:214–215.
 23. Dietrichson P, Coakley J, Smith P, Griffiths R, Helliwell T, Edwards R. Conchotome and needle percutaneous biopsy of skeletal muscle. *J Neurol Neurosurg Psychiatry* 1987;**50**:1461–1467.
 24. Boereboom C, Phillips B, Williams J, Lund JN. A 31-day time to surgery compliant exercise training programme improves aerobic health in the elderly. *Tech Coloproctol* 2016;**20**:375–382.
 25. Borg GA. Psychophysical bases of perceived exertion. *Med Sci Sports Exerc* 1982;**14**:377–381.
 26. Franchi MV, Wilkinson DJ, Quinlan JJ, Mitchell WK, Lund JN, Williams JP, et al. Early structural remodeling and deuterium oxide-derived protein metabolic responses to eccentric and concentric loading in human skeletal muscle. *Physiol Rep* 2015;**3**:1–11.
 27. Wilkinson DJ, Franchi MV, Brook MS, Narici MV, Williams JP, Mitchell WK, et al. A validation of the application of D2O stable isotope tracer techniques for monitoring day-to-day changes in muscle protein subfraction synthesis in humans. *Am J Physiol Endocrinol Metab* 2014;**306**:571–579.
 28. Brook MS, Wilkinson DJ, Mitchell WK, Lund JN, Phillips BE, Szewczyk NJ, et al. Synchronous deficits in cumulative muscle protein synthesis and ribosomal biogenesis underlie age-related anabolic resistance to exercise in humans. *J Physiol* 2016;**594**:7399–7417.
 29. Bass JJ, Wilkinson DJ, Rankin D, Phillips BE, Szewczyk NJ, Smith K, et al. An overview of technical considerations for Western blotting applications to physiological research. *Scand J Med Sci Sports* 2017;**27**: 4–25.
 30. Trounce IA, Kim YL, Jun AS, Wallace DC. Assessment of mitochondrial oxidative phosphorylation in patient muscle biopsies, lymphoblasts, and transmittochondrial cell lines. In Attardi G, Chomyn A, eds. *Mitochondrial Biogenesis and Genetics: Part B*. Elsevier; 1996. p 484–509.
 31. Hlatky MA, Boineau RE, Higginbotham MB, Lee KL, Mark DB, Califf RM, et al. A brief self-administered questionnaire to determine functional capacity (the Duke Activity Status Index). *Am J Cardiol* 1989;**64**: 651–654.
 32. Group TE. EuroQol—a new facility for the measurement of health-related quality of life. *Health Policy* 1990;**16**:199–208.
 33. Tanaka H, Monahan KD, Seals DR. Age-predicted maximal heart rate revisited. *J Am Coll Cardiol* 2001;**37**:153–156.
 34. Armstrong ME, Cairns BJ, Green J, Reeves GK, Beral V, Collaborators MWS. Reported frequency of physical activity in a large epidemiological study: relationship to specific activities and repeatability over time. *BMC Med Res Methodol* 2011;**11**:97.
 35. Sloth M, Sloth D, Overgaard K, Dalgas U. Effects of sprint interval training on VO_{2max} and aerobic exercise performance: a systematic review and meta-analysis. *Scand J Med Sci Sports* 2013;**23**:e341–e352.
 36. Lee D-c, Sui X, Artero EG, Lee I-M, Church TS, McAuley PA, et al. Long-term effects of changes in cardiorespiratory fitness and body mass index on all-cause and cardiovascular disease mortality in men: the Aerobics Center Longitudinal Study. *Circulation* 2011;**124**:2483–2490.
 37. Staessen JA, Gasowski J, Wang JG, Thijs L, Den Hond E, Boissel J-P, et al. Risks of untreated and treated isolated systolic hypertension in the elderly: meta-analysis of outcome trials. *Lancet* 2000;**355**:865–872.
 38. Wilkinson SB, Phillips SM, Atherton PJ, Patel R, Yarasheski KE, Tarnopolsky MA, et al. Differential effects of resistance and endurance exercise in the fed state on signalling molecule phosphorylation and protein synthesis in human muscle. *J Physiol* 2008;**586**:3701–3717.
 39. Mosaferi Ziaaldini M, Attarzadeh Hosseini SR, Fathei M. Mitochondrial adaptations in aged skeletal muscle: effect of exercise training. *Physiol Res* 2017;**66**:1–14.
 40. Bua E, Johnson J, Herbst A, Delong B, McKenzie D, Salamat S, et al. Mitochondrial DNA-deletion mutations accumulate intracellularly to detrimental levels in aged human skeletal muscle fibers. *Am J Hum Genet* 2006;**79**:469–480.
 41. Broskey NT, Boss A, Fares EJ, Greggio C, Gremion G, Schlüter L, et al. Exercise efficiency relates with mitochondrial content and function in older adults. *Physiol Rep* 2015;**3**:e12418.
 42. Hood MS, Little JP, Tarnopolsky MA, Myslik F, Gibala MJ. Low-volume interval training improves muscle oxidative capacity in sedentary adults. *Med Sci Sports Exerc* 2011;**43**:1849–1856.
 43. Wyckelsma VL, Levinger I, McKenna MJ, Formosa LE, Ryan MT, Petersen AC, et al. Preservation of skeletal muscle mitochondrial content in older adults: relationship between mitochondria, fibre type and high-intensity exercise training. *J Physiol* 2017;**595**:3345–3359.
 44. Konopka AR, Suer MK, Wolff CA, Harber MP. Markers of human skeletal muscle mitochondrial biogenesis and quality control: effects of age and aerobic exercise training. *J Gerontol Ser A Biol Sci Med Sci* 2014;**69**:371–378.
 45. Short KR, Vittone JL, Bigelow ML, Proctor DN, Rizza RA, Coenen-Schimke JM, et al. Impact of aerobic exercise training on age-related changes in insulin sensitivity and muscle oxidative capacity. *Diabetes* 2003;**52**:1888–1896.
 46. Vigelsø A, Andersen NB, Dela F. The relationship between skeletal muscle mitochondrial citrate synthase activity and

- whole body oxygen uptake adaptations in response to exercise training. *Int J Physiol Pathophysiol Pharmacol* 2014;**6**:84.
47. Kruse SE, Karunadharm PP, Basisty N, Johnson R, Beyer RP, MacCoss MJ, et al. Age modifies respiratory complex I and protein homeostasis in a muscle type-specific manner. *Aging Cell* 2016;**15**:89–99.
 48. O'Brien MW, Johns JA, Robinson SA, Bungay A, Mekary S, Kimmerly DS. Impact of high-intensity interval training, moderate-intensity continuous training, and resistance training on endothelial function in older adults. *Med Sci Sports Exerc* 2020;**52**:1057–1067.
 49. Ishii N. Role of oxidative stress from mitochondria on aging and cancer. *Cornea* 2007;**26**:S3–S9.
 50. Gharahdaghi N, Rudrappa S, Brook MS, Idris I, Crossland H, Hamrock C, et al. Testosterone therapy induces molecular programming augmenting physiological adaptations to resistance exercise in older men. *J Cachexia Sarcopenia Muscle* 2019;**10**:1276–1294.
 51. Sultana RN, Sabag A, Keating SE, Johnson NA. The effect of low-volume high-intensity interval training on body composition and cardiorespiratory fitness: a systematic review and meta-analysis. *Sports Med* 2019;**49**:1687–1721.
 52. Mandrup CM, Egelund J, Nyberg M, Slingsby MHL, Andersen CB, Løgstrup S, et al. Effects of high-intensity training on cardiovascular risk factors in premenopausal and postmenopausal women. *Am J Obstet Gynecol* 2017;**216**:384.e1–384.e11.
 53. Williams JP, Phillips BE, Smith K, Atherton PJ, Rankin D, Selby AL, et al. Effect of tumor burden and subsequent surgical resection on skeletal muscle mass and protein turnover in colorectal cancer patients. *Am J Clin Nutr* 2012;**96**:1064–1070.
 54. Greig C, Gray C, Rankin D, Young A, Mann V, Noble B, et al. Blunting of adaptive responses to resistance exercise training in women over 75 y. *Exp Gerontol* 2011;**46**:884–890.
 55. Van der Meer S, Jaspers R, Degens H. Is the myonuclear domain size fixed? *J Musculoskelet Neuronal Interact* 2011;**11**:286–297.
 56. Fyfe JJ, Bishop DJ, Zacharewicz E, Russell AP, Stepto NK. Concurrent exercise incorporating high-intensity interval or continuous training modulates mTORC1 signaling and microRNA expression in human skeletal muscle. *Am J Physiol Regul Integr Comp Physiol* 2016;**310**:R1297–R1311.
 57. Thomassen M, Gunnarsson TP, Christensen PM, Pavlovic D, Shattock MJ, Bangsbo J. Intensive training and reduced volume increases muscle FXD1 expression and phosphorylation at rest and during exercise in athletes. *Am J Physiol Regul Integr Comp Physiol* 2016;**310**:R659–R669.
 58. Phillips SM, Tipton KD, Aarsland A, Wolf SE, Wolfe RR. Mixed muscle protein synthesis and breakdown after resistance exercise in humans. *Am J Physiol Endocrinol Metab* 1997;**273**:E99–E107.
 59. Tavoian D, Ampomah K, Amano S, Law TD, Clark BC. Changes in DXA-derived lean mass and MRI-derived cross-sectional area of the thigh are modestly associated. *Sci Rep* 2019;**9**:1–9.
 60. Delmonico M, Kostek M, Johns J, Hurley B, Conway J. Can dual energy X-ray absorptiometry provide a valid assessment of changes in thigh muscle mass with strength training in older adults? *Eur J Clin Nutr* 2008;**62**:1372–1378.
 61. Bell KE, Snijders T, Zulyniak M, Kumbhare D, Parise G, Chabowski A, et al. A whey protein-based multi-ingredient nutritional supplement stimulates gains in lean body mass and strength in healthy older men: a randomized controlled trial. *PLoS ONE* 2017;**12**:e0181387.
 62. Huang G, Pencina K, Li Z, Apovian CM, Trivison TG, Storer TW, et al. Effect of protein intake on visceral abdominal fat and metabolic biomarkers in older men with functional limitations: results from a randomized clinical trial. *The Journals of Gerontology: Series A* 2021.
 63. Cermak NM, Res PT, de Groot LC, Saris WH, van Loon LJ. Protein supplementation augments the adaptive response of skeletal muscle to resistance-type exercise training: a meta-analysis. *Am J Clin Nutr* 2012;**96**:1454–1464.
 64. Jack S, West M, Grocott M. Perioperative exercise training in elderly subjects. *Best Pract Res Clin Anaesthesiol* 2011;**25**:461–472.
 65. von Haehling S, Morley JE, Coats AJ, Anker SD. Ethical guidelines for publishing in the *Journal of Cachexia, Sarcopenia and Muscle*: update 2019. *J Cachexia Sarcopenia Muscle* 2019;**10**:1143–1145.