

University of Dundee

**Tracers reveal limited influence of plantation forests on surface runoff in a UK natural flood management catchment**

Peskett, Leo; Heal, Kate V.; MacDonald, Alan M.; Black, Andrew; McDonnell, Jeffrey J.

*Published in:*  
Journal of Hydrology Regional Studies

*DOI:*  
[10.1016/j.ejrh.2021.100834](https://doi.org/10.1016/j.ejrh.2021.100834)

*Publication date:*  
2021

*Document Version*  
Publisher's PDF, also known as Version of record

[Link to publication in Discovery Research Portal](#)

*Citation for published version (APA):*  
Peskett, L., Heal, K. V., MacDonald, A. M., Black, A., & McDonnell, J. J. (2021). Tracers reveal limited influence of plantation forests on surface runoff in a UK natural flood management catchment. *Journal of Hydrology Regional Studies*, 36, [100834]. <https://doi.org/10.1016/j.ejrh.2021.100834>

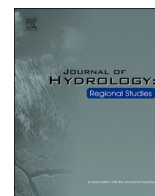
**General rights**

Copyright and moral rights for the publications made accessible in Discovery Research Portal are retained by the authors and/or other copyright owners and it is a condition of accessing publications that users recognise and abide by the legal requirements associated with these rights.

- Users may download and print one copy of any publication from Discovery Research Portal for the purpose of private study or research.
- You may not further distribute the material or use it for any profit-making activity or commercial gain.
- You may freely distribute the URL identifying the publication in the public portal.

**Take down policy**

If you believe that this document breaches copyright please contact us providing details, and we will remove access to the work immediately and investigate your claim.



## Tracers reveal limited influence of plantation forests on surface runoff in a UK natural flood management catchment

Leo M. Peskett<sup>a,\*</sup>, Kate V. Heal<sup>a</sup>, Alan M. MacDonald<sup>b</sup>, Andrew R. Black<sup>c</sup>, Jeffrey J. McDonnell<sup>d,e</sup>

<sup>a</sup> University of Edinburgh, School of GeoSciences, Crew Building, Alexander Crum Brown Road, Edinburgh, EH9 3FF, United Kingdom

<sup>b</sup> British Geological Survey, The Lyell Centre, Research Avenue South, Edinburgh, EH14 4AP, United Kingdom

<sup>c</sup> Geography and Environmental Science, Tower Building, University of Dundee, Dundee, DD1 4HN, United Kingdom

<sup>d</sup> Global Institute for Water Security, School of Environment and Sustainability, University of Saskatchewan, Saskatoon, SK, S7N 3H5, Canada

<sup>e</sup> School of Geography, Earth and Environmental Sciences, University of Birmingham, Birmingham, B15 2TT, United Kingdom

### ARTICLE INFO

#### Keywords:

Flooding  
Upland catchments  
Stable isotopes  
Runoff attenuation  
Afforestation  
Hydrograph separation

### ABSTRACT

*Study region:* United Kingdom (UK).

*Study focus:* Natural flood management (NFM) schemes are increasingly prominent in the UK. Studies of NFM have not yet used natural tracers at catchment scale to investigate how interventions influence partitioning during storms between surface rainfall runoff and water already stored in catchments. Here we investigate how catchment properties, particularly plantation forestry, influence surface storm rainfall runoff. We used hydrograph separation based on hydrogen and oxygen isotopes (<sup>2</sup>H, <sup>18</sup>O) and acid neutralising capacity from high flow events to compare three headwater catchments (2.4–3.1 km<sup>2</sup>) with differences in plantation forest cover (*Picea sitchensis*: 94%, 41%, 1%) within a major UK NFM pilot, typical of the UK uplands.

*New hydrological insights:* Plantation forest cover reduced the total storm rainfall runoff fraction during all events (by up to 11%) when comparing two paired catchments with similar soils, geology and topography but ~50% difference in forest cover. However, comparison with the third catchment, with negligible forest cover but different characteristics, suggests that soils and geology were dominant controls on storm rainfall runoff fraction. Furthermore, differences between events were greater than differences between catchments. These findings suggest that while plantation forest cover may influence storm rainfall runoff fractions, it is not a dominant control in temperate upland UK catchments, especially for larger events. Soils and geology may exert greater influence, with implications for planning NFM.

### 1. Introduction

There is increasing interest globally in the use of nature-based solutions for flood risk management and disaster risk reduction (EEA, 2017; World Bank, 2018). In the UK, one manifestation of nature-based solutions is a new wave of policies and projects in support of natural flood management (NFM) (Dadson et al., 2017; Kay et al., 2019; Lane, 2017). These policies promote a catchment-wide

\* Corresponding author.

E-mail addresses: [leo.peskett@ed.ac.uk](mailto:leo.peskett@ed.ac.uk), [k.heal@ed.ac.uk](mailto:k.heal@ed.ac.uk) (L.M. Peskett), [amm@bgs.ac.uk](mailto:amm@bgs.ac.uk) (A.M. MacDonald), [a.z.black@dundee.ac.uk](mailto:a.z.black@dundee.ac.uk) (A.R. Black), [jeffery.mcdonnell@usask.ca](mailto:jeffery.mcdonnell@usask.ca) (J.J. McDonnell).

<https://doi.org/10.1016/j.ejrh.2021.100834>

Received 3 December 2020; Received in revised form 12 March 2021; Accepted 15 May 2021

2214-5818/© 2021 The Authors. Published by Elsevier B.V. This is an open access article under the CC BY license

(<http://creativecommons.org/licenses/by/4.0/>).

approach to flood risk management, through interventions aimed at reducing surface runoff (e.g. tree planting and livestock management) and slowing the flow of water in rivers (e.g. leaky wooden dams and re-meandering) during flood events (Dadson et al., 2017; Environment Agency, 2017). There are now over 94 NFM projects in the UK, but monitoring and quantitative assessment of these schemes remain low, and evidence of effectiveness is limited (Dadson et al., 2017; Environment Agency, 2020; Hankin et al., 2017; Kay et al., 2019; NFM Network Scotland, 2020). Key challenges surround how to determine the effectiveness of NFM at larger scales ( $>50 \text{ km}^2$ ) as well as understanding the behaviour of NFM schemes under different storm or antecedent conditions (Dadson et al., 2017). Addressing these challenges requires considerable understanding of hydrological processes in NFM catchments and the application of techniques, such as tracers, that can help assess processes at scale and using different measures of catchment response.

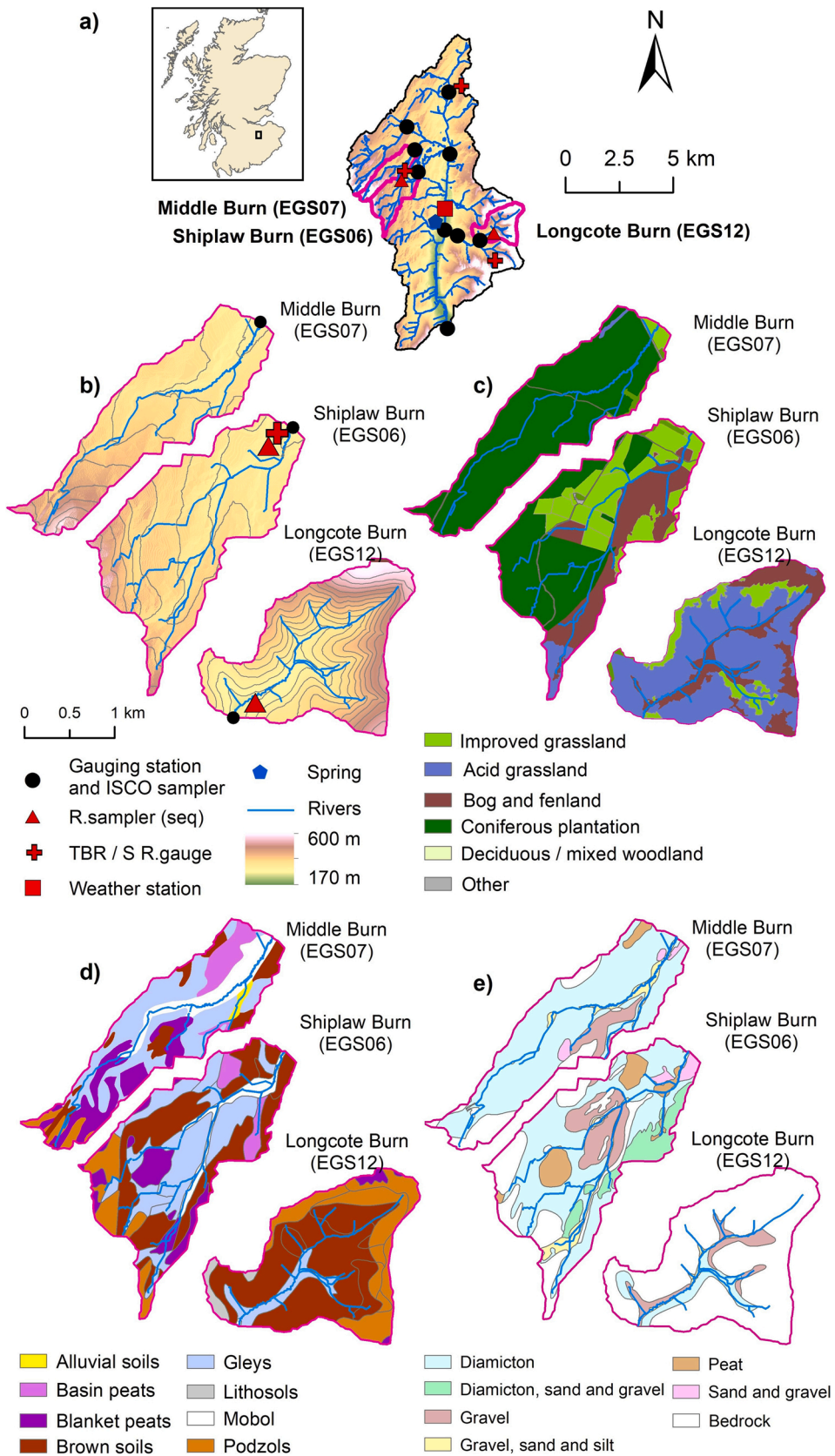
A focal area of NFM policy surrounds the potential for afforestation in catchment headwaters to reduce rapid runoff during storm events through increased interception, infiltration and surface roughness (Ngai et al., 2017). However, the effects of woodland creation on reducing peak flows are not clear in UK catchments (Bathurst et al., 2020; Carrick et al., 2018; Stratford et al., 2017). Discerning the impact of afforestation on runoff depends on the ability to detect changes in flood peak magnitude or timing following interventions, as well as understanding the underlying processes through which forest cover influences water movement in catchments (Zégre et al., 2010). Paired catchment studies have been widely used to detect changes but are subject to challenges such as lack of comparability between treatment and control catchments, short time series and small sample sizes (Alila et al., 2009; Bosch and Hewlett, 1982; Brown et al., 2005). Model-based change detection provides an alternative approach that has also been widely used. However, assumptions about the stationarity of catchment processes in pre- and post-treatment periods have rarely been tested and uncertainties evaluated (Zégre et al., 2010). There are also many challenges involved in parameterisation, such as representing surface roughness, which is affected by land use and seasonal vegetation changes (Bond et al., 2020). While model-based change detection can be applied in ways that allow for the exploration of input parameters (Seibert and McDonnell, 2010), neither this approach nor paired catchment studies give direct insights into hydrological processes.

Research on how afforestation impacts on hydrological processes complements change detection studies by helping to identify dominant runoff mechanisms and the relative importance of different catchment characteristics in controlling flow paths (Geris et al., 2015). Understanding these relationships is particularly important from a management perspective as it may help to identify how and where to locate afforestation within catchments (Murphy et al., 2020). For example, the impact of afforestation or forest removal on runoff processes may be highly variable depending on soil type, soil depth and bedrock permeability, which affect catchment storage (Pfister et al., 2017), as well as forest management practices such as the type of trees, planting configuration and drainage (Archer et al., 2013; Lunka and Patil, 2016; Robinson, 1986, 1998). It is also necessary to understand the relative importance of meteorological factors, such as the magnitude and duration of rainfall events and antecedent wetness conditions, on runoff mechanisms. Evidence in the UK suggests that NFM is unlikely to be effective during the largest events (Dadson et al., 2017).

So how can such process effects of forest cover be detected in natural systems? Conservative, naturally occurring tracers, such as  $^2\text{H}$  and  $^{18}\text{O}$  can be used in hydrograph separation as a method for investigating runoff mechanisms (Kendall and McDonnell, 1998). Such tracers can help determine the degree to which event rainfall, versus water already stored in the catchment (pre-event water), contributes to storm runoff. Many studies have demonstrated the dominance of pre-event water in runoff, which has changed perceptions of runoff mechanisms (Klaus and McDonnell, 2013). This has shifted the emphasis of catchment process studies towards questions of how stored water can be quickly mobilised during storm events, which in turn raises questions about infiltration, threshold behaviour and connectivity that could be influenced by catchment management (Bracken et al., 2013). These issues warrant consideration in a NFM context. A common perception in current NFM practice (as in earlier waves of upland environmental management (Neal et al., 1997)) is of event runoff originating primarily as rapid overland flow of event water from saturated variable source areas, which does not place enough emphasis on the potentially important role of water already stored in the catchment. Surprisingly, tracers have not been used more in change detection studies, despite early work that showed how in land use studies, changes in the source components of flow were not revealed by simple hydrograph analysis (Gremillion et al., 2000). To our knowledge, NFM projects have not yet been the subject of catchment scale tracer-based studies or used tracers to evaluate assumptions about management efficacy based on source components.

What do we know about source components in catchments like those targeted for NFM? Pre-event water contributions have been found to vary with catchment characteristics. In general there is an increase in event water runoff on a rural to urban gradient (Hasenmueller et al., 2017; Klaus and McDonnell, 2013). Early work showed that event-water contributions are inversely related to catchment size (Brown et al., 1999) and that pre-event water increases with increasing antecedent wetness (Muñoz-Villers and McDonnell, 2012). Forests influence throughfall volumes, soil infiltration rates and subsurface connectivity, which can result in greater subsurface flow and higher pre-event water in streams (Buttle, 1994). Grasslands have been shown to have higher event water fractions (Bonell et al., 1990; Muñoz-Villers and McDonnell, 2013; Roa-García and Weiler, 2010). These land cover effects are influenced by catchment soils and topography: catchments with thin soils and steeper slopes often have higher event water fractions (Suecker et al., 2000).

Here we use hydrograph separation to test the impact of catchment interventions on the source components of peak flows. We follow the Gremillion et al. (2000) idea that tracer-based hydrograph separations will reveal possible differences in flow pathways that could be useful for planning and evaluating NFM, even if there are no discernible changes to the timing and magnitude of storm hydrographs. Our work uses additional tracers for hydrograph separation to further unpick the time- and geographic-based components of runoff sources and pathways. While there are some challenges in using tracer-based approaches (Klaus and McDonnell, 2013), there are a number of ways in which this approach could be valuable in planning and monitoring NFM in addition to more standard hydrological methods. It can help in understanding the relative importance of shallow subsurface flow within soils (which might be influenced by changes to soil management) and deeper subsurface flow within bedrock (which is more difficult to influence).



(caption on next page)

**Fig. 1.** Maps of the study site. a) location of the Eddleston Water catchment (including TBR rain gauges and weather station locations) highlighting the three catchments (pink outline shows catchment boundaries) where event sampling was carried out (red arrow indicates stream flow direction); b) monitoring network in the three sub-catchments and sub-catchment topography (red arrows indicate stream flow direction). Automatic water samplers were located adjacent to stream gauges; c) sub-catchment land use; d) sub-catchment soil cover ('Mobil' is undifferentiated mixed bottom land); e) sub-catchment geology. R. sampler (seq): sequential rainfall sampler; TBR / S R.gauge: paired tipping bucket and storage rain gauges. At the time of the study, forest cover figures in the Middle Burn and Shiplaw catchments, respectively, included ~25% and ~10% recently felled forest, with stumps left in the ground.

Tracer-based hydrograph separation has a physical basis that is lacking in most standard hydrometric separation methods (Klaus and McDonnell, 2013). When applied at high resolution through storm events, tracers can reveal not just the proportions of different runoff components during events but the timing of different components during individual event hydrographs (e.g. whether flood peaks are dominated by event rainfall). Finally, tracers can help in evaluating the co-benefits and risks of different types of interventions, for example by helping to investigate flow paths and residence times of water around interventions such as field buffer strips (Novara et al., 2013; Wilkinson et al., 2014).

We report tracer-based hydrograph separation ( $^2\text{H}/^{18}\text{O}$  and acid neutralising capacity (ANC)) in three neighbouring catchments within a wider 70 km<sup>2</sup> pilot NFM project in the UK uplands. Two of these catchments are paired, with similar soils, geology and topography but ~50% difference in forest cover. The third catchment, with the lowest forest cover, has some differences in underlying characteristics, but is representative of the range of conditions in the wider NFM project. We test the null hypothesis that plantation forest cover has no influence on the source components of runoff. We then further investigate the relative influence of catchment and storm event characteristics on fractions of event and groundwater runoff.

The main questions addressed in the research were:

- 1 What is the effect of plantation forest cover on the fraction of event water runoff?
- 2 How do other catchment features (soils, geology and topography) impact the source components of runoff?
- 3 How do the event magnitude and intensity impact these differences?

Finally, we discuss the implications for NFM in the UK from these process findings.

**Table 1**

Summary of characteristics of the three catchments. 'Mixed bottom land' soil type was reclassified into Alluvial soils, and Lithosols into Brown soils for clarity. Data sources: topographic data – in ArcGIS from 5 m × 5 m resolution digital terrain model (DTM) (Ordnance Survey, 2016); land cover - Scottish Borders Council survey (Medcalf and Williams, 2010); soils data - 1:25,000 soils map of Scotland (Soil Survey of Scotland Staff, 1970); geology - 1:25,000 geological map produced by the British Geological Survey (Auton, 2011).

Characteristic	Middle Burn (EGS07)	Shiplaw (EGS06)	Longcote (EGS12)
<i>Topographic indices</i>			
Area (km <sup>2</sup> )	2.4	3.1	2.7
Median elevation (m)	313	324	376
Median slope (°)	5	5	16
Drainage density (km km <sup>-2</sup> )	0.0031	0.0020	0.0027
Topographic wetness index (ln(m))	6.7	6.5	5.7
<i>Land cover</i>			
Woodland – all types, including recently felled (%)	94	41	1
Improved and semi-improved grassland (%)	2	28	11
Acid grassland/bracken/ heathland (%)	1	3	64
Dry/wet modified bog and fenland (%)	0	27	22
<i>Soils</i>			
Alluvial soils (%)	17	6	0
Basin peats (%)	9	5	0
Blanket peats (%)	19	11	2
Brown soils (%)	12	35	62
Gleys (%)	39	33	8
Podzols (%)	4	10	28
<i>Geology</i>			
Glacial till and peat (%)	76	63	8
Sand and gravel (%)	12	16	8
Bedrock (%)	12	21	84

## 2. Methods

### 2.1. Study site and design

The research focussed on three small headwater catchments (2.4–3.1 km<sup>2</sup>, Fig. 1, Table 1) in the Scottish Borders, UK, which are typical of many UK upland catchments and are monitored within the wider NFM project. The catchments have a large range in forest cover (94%, 41% and 1%), making them ideal for investigating the influence of forest cover on source components of flow. Comparisons between the neighbouring Shiplaw and Middle Burn catchments enabled a ‘paired catchment’ approach, given their similar catchment characteristics other than percentage forest cover. Comparisons between these catchments and the Longcote catchment allowed for insights into the relative role of other catchment characteristics on runoff components across the wider NFM catchment. We used hydrograph separation based on isotopes (<sup>2</sup>H and <sup>18</sup>O) and ANC to compare time and geographic source components, respectively, of runoff in the three catchments during four high flow events. The wider Eddleston Water catchment (a sub-catchment of the River Tweed) is the focus of one of the UK’s largest and long running NFM pilot sites, which aims to inform national water policy (under the EU Water Framework Directive and EU Floods Directive) (Tweed Forum, 2019; Werritty et al., 2010).

Forest cover was historically limited in most of the catchment during the 20th century, but conifer plantations (primarily Sitka spruce, *Picea sitchensis*) were established in the 1960s and 1970s particularly in the west. The peaty soils were prepared for planting by deep ploughing to create drainage ditches. However, it was assumed that these had minimal impact in this study since they have not been maintained since at least the 1990s and have been actively blocked in some cases to follow more recent forest management guidelines. Approximately 94% of Middle Burn was conifer forest cover at various growth stages at the time of the study, including ~25% recently felled forest. No new access roads were built during felling and brash mats were used to minimise compaction. A series of leaky wooden dams has also been constructed in this catchment as part of the NFM project, but these are only active during the largest events (Black et al., 2021) and release water rapidly as storms subside, so we assume they have negligible effect on total event water runoff fractions. The adjacent Shiplaw catchment has 41% conifer forest cover (including ~10% recent felling), 28% improved and semi-improved grassland, much of which has under-field tile drainage that is common in the UK uplands (Harrison, 2012), and 27% fenland. The steeper Longcote catchment in the east has 1% conifer forest cover, 11% improved grassland and 64% rough grassland (30% heathland, 22% unimproved acid grassland, 12% bracken), and 22% fenland. Most of the catchment is grazed by sheep, cattle grazing occurs on the lower slopes and drains exist under the improved grassland areas.

Soils in the western catchments include extensive areas of poorly permeable gleyed soils and peats, but also areas of more freely draining brown soils, whilst the eastern catchment is dominated by brown soils with some peaty and gleyed soils on hilltops. Soil median field saturated hydraulic conductivities measured nearby (~3 km) in the wider catchment in a separate study (Archer et al., 2013) were 0.50–0.94 m d<sup>-1</sup> for improved grassland sites, 1 m d<sup>-1</sup> for ~50 year old plantation forest, and 2.86–4.18 m d<sup>-1</sup> for broadleaf forests >180 years old. Soils and underlying geology are strongly associated. The western catchments are dominated by poorly permeable glacial till (Aitken et al., 1984) with pockets of permeable glacio-lacustrine sands and gravels (Fig. 1a). The estimated hydraulic conductivity of the glacial till is < 0.001 to 1 m d<sup>-1</sup> (MacDonald et al., 2012). The eastern catchment is mostly rock head overlying bedrock, with smaller areas of glacial till mantling some of the main streams. The hydraulic conductivity of the Silurian greywacke bedrock was not measured, but Silurian greywacke aquifers elsewhere in southern Scotland have low productivity (Ó Dochartaigh et al., 2015), with an estimated average transmissivity of 20 m<sup>2</sup> d<sup>-1</sup> (Graham et al., 2009).

Elevation ranges between 250 and 600 masl across the three study catchments. At Eddleston Village mean annual precipitation (2011–2017) is ~900 mm, falling mainly as rainfall; monthly mean air temperatures are 3–13 °C; and actual daily evapotranspiration ranges from 0.2 mm in winter to 2.5 mm in summer (estimated using methods of Granger and Gray, 1989).

### 2.2. Field methods

#### 2.2.1. Hydrometric monitoring

Rainfall has been measured since April 2011 at four locations, representative of the wider ~70 km<sup>2</sup> Eddleston Water catchment, using stainless steel Octapent storage rain gauges and tipping bucket rain gauges (RIM8020) recording at 15 min intervals and in increments of 0.2 mm. These gauges are situated inside or within 1 km of the study catchments (Fig. 1). Air temperature, solar radiation, relative humidity and wind speed and direction have been measured at the same time step over the same period at a weather station (Campbell CR1000 Automatic Weather Station) located at the centre of the catchment (Fig. 1 a and b).

Stream water levels have been measured every 15 min (Hobo U20 0–3.5 m unvented pressure-based water level recorders) in each catchment since April 2011. Discharge was calculated at the same time step using rating curves derived from applying the mid-section method (Dingman, 2014) to velocity-area gauging at natural rated sections approximately 8 times a year under a range of conditions (Peskett, 2020).

#### 2.2.2. Event precipitation sampling

Event sampling was carried out over a 48 h period in the three catchments for seven events between December 2015 and February 2017. Events were targeted based on weather forecasts and predicted precipitation maps from the UK Met Office, and were only considered if total predicted event rainfall was above 15 mm with an average intensity of approximately 2 mm h<sup>-1</sup> (based on prior knowledge of the responsiveness of the catchment).

Event rainfall was sampled within the Longcote and Shiplaw catchments (Fig. 1) using sequential rainfall samplers built using a modified version of the method described in Kennedy et al. (1979). These were deployed a few hours prior to the start of the forecast

event rainfall in open field locations. The samplers collect rainfall in 6 mm increments for the first three samples, 11 mm for the fourth sample and then a bulk sample for the rest of the event. The volume increments were converted to time increments by pairing with the cumulative rainfall data from the closest TBR rain gauge. Bulk rainfall samples for the whole event were also collected from adjacent temporary storage gauges in case of failure of the sequential samplers.

Rainfall samples were collected before any further rainfall (and within 12 h of the end of each event), with aliquots for isotopic analysis transferred in the field into two 15 mL HDPE bottles filled completely to remove air. Snow samples were also taken in the February event to test for the influence of snow on separation results (see Supplementary data S1.1). Throughfall was not sampled, but a sensitivity analysis was conducted for the effects of throughfall in hydrograph separation using data from the literature (S1.1).

### 2.2.3. Event stream water sampling

Stream water sampling for the first event (December 2015) used two automatic water samplers (ISCO 6712, Teledyne ISCO, Nebraska, USA) programmed for a 2 hly sampling frequency and manual sampling in the third catchment (Middle Burn) at lower frequency, as an automatic sampler was not available. All subsequent events used three automatic samplers sited adjacent to the gauging stations and programmed at a 2 hly sampling frequency, giving a sampling window of up to 48 h, since each sampler held 24 bottles. All samplers were primed with clean, dry bottles prior to the event, timed to start a few hours before forecast rainfall and programmed to purge the inlet tubing with river water prior to collecting each sample. We used a number of approaches to prevent and check for evaporation: samples were pumped into bottles with narrow necks within the shaded, wind-free and pale-grey compartment of automatic water samplers; samples were collected within 12 h of the sampler programmes finishing; samples were transferred directly from the automatic sampler bottles into two 15 mL HDPE bottles in the field, and were filled completely to exclude air before sealing; and after sample analysis we also checked that there was no systematic deviation on  $\delta^2\text{H}$  vs.  $\delta^{18}\text{O}$  plots compared to the Local Meteoric Water Line. The remaining stream water samples were transported to the laboratory in capped automatic sampler bottles, where they were refrigerated at 4 °C prior to ANC analysis and analysed within 48 h of the event ending.

Automatic water samplers failed during two events. During the July 2016 event, a blocked sampling tube in Shiplaw meant that only the first sample was collected and this catchment had to be removed from the analysis of that event. An electronic failure in the Middle Burn automatic sampler during the February 2017 event resulted in some missing data for the first part of the event. Manually collected samples prior to the event and before the onset of the main flow peak enabled estimation of the event fraction using interpolation and linear regression based on the neighbouring Shiplaw catchment data (as explained in Tables S1 and S2).

In total, 60 event rainfall samples, 4 event snow samples and 395 stream samples were collected across seven events. The final event dataset for isotopic and ANC analysis reported here is based on four events (Table 2). Three of the events were excluded due to smaller than forecast rainfall or rainfall isotopic composition that was insufficiently different from streams to enable hydrograph separation.

## 2.3. Laboratory methods

Precipitation and stream samples were analysed for H and O isotope compositions using a Los Gatos Research liquid water Off-Axis Integrated-Cavity Output Spectroscopy (Off-Axis ICOS) laser absorption spectrometer at the University of Saskatchewan, Canada. We used standard analytical methods (IAEA, 2009) and report  $\delta^2\text{H}$  and  $\delta^{18}\text{O}$  values relative to V-SMOW; precision was  $\pm 1.0\%$  and  $\pm 0.2\%$ , respectively.

ANC was determined in stream water samples using acidimetric titration with  $\text{H}_2\text{SO}_4$  in accordance with Rounds (2012) to end-points of pH 4.5, 4.1, 4.0 and 3.5 within 48 h of returning from the field. In natural waters where aluminium concentrations are low this method has been shown to give a good approximation of ANC (Neal, 2001).

Conductivity and pH were not a focus of this study, but were determined in stream samples to help characterise water chemistry. Conductivity was measured using a temperature compensated conductivity meter (Mettler Toledo SG7) and pH was measured during

**Table 2**

Summary of samples and hydrological characteristics for four events sampled at high frequency in the three catchments. R: total event rainfall; I: maximum rainfall intensity; API: 5 day Antecedent Precipitation Index (Kohler and Linsley, 1951); AP28d: 28 day pre-event rainfall; RR: runoff ratio; Bulk  $\delta^2\text{H}$ ; isotopic signature for all precipitation sampled during the event.

Event	Catchment	Precip. samples	Stream samples	R (mm)	I (mm 15 min <sup>-1</sup> )	API (mm)	AP28d (mm)	RR	Bulk $\delta^2\text{H}$ (‰)
29/12/2015	M. Burn (EGS07)	1	21	14.6	1.8	35.1	249	0.16	-39.05
29/12/2015	Shiplaw (EGS06)	1	5	14.6	1.8	35.1	249	0.20	-39.05
29/12/2015	Longcote (EGS12)	1	23	24.4	1.4	41.6	189	0.06	-37.07
20/07/2016	M. Burn (EGS07)	5	18	19.0	9.7	9.61	69.6	0.10	-30.79
20/07/2016	Shiplaw (EGS06)	5	0	19.0	9.7	9.61	69.6	0.16	-30.79
20/07/2016	Longcote (EGS12)	5	19	18.4	10	12.5	99.8	0.04	-33.09
21/11/2016	M. Burn (EGS07)	3	18	28.2	2.8	11.7	69.2	0.23	-97.17
21/11/2016	Shiplaw (EGS06)	3	23	28.2	2.8	11.7	69.2	0.25	-97.17
21/11/2016	Longcote (EGS12)	5	18	44.2	1.0	12.2	84.2	0.11	-105.13
22/02/2017	M. Burn (EGS07)	9 (+2 snow)	43	32.6	1.8	10.5	53.2	0.14	-73.29
22/02/2017	Shiplaw (EGS06)	9 (+2 snow)	26	32.6	1.8	10.5	53.2	0.18	-73.29
22/02/2017	Longcote (EGS12)	11 (+2 snow)	42	37.8	1.4	7.61	56.6	0.13	-81.77

**Table 3**

Discharge statistics for the three catchments based on daily discharge data for October 2011-September 2017. Calculation methods are detailed in S1.3. MAPR: mean annual peak runoff; RB: Richards-Baker flashiness index (Baker et al., 2004); FDC\_Q1\_5: gradient of flow duration curve between 1st and 5th percentiles; Lag time (LT) is between rainfall centroid and discharge peak for events selected based on the methodology outlined in S1.3. Time to peak (TTP) and runoff ratio (RR) are based on the same events dataset.

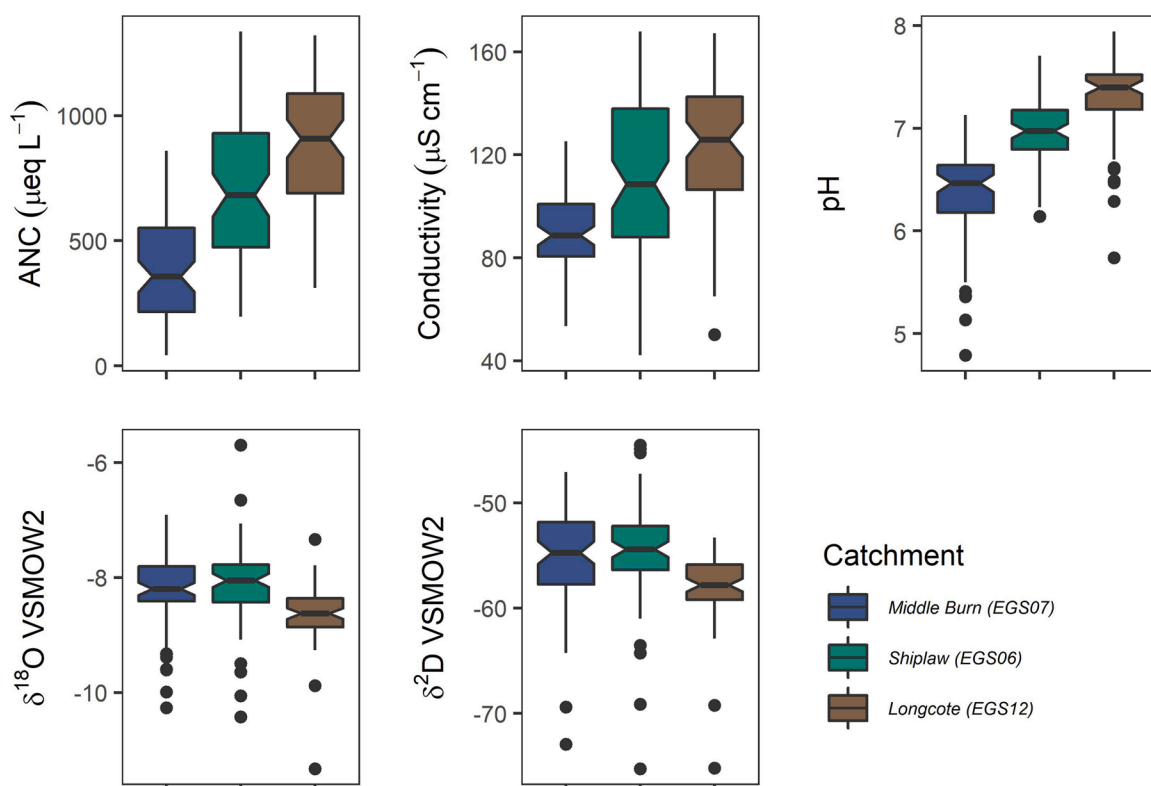
Variable	Middle Burn (EGS07)	Shiplaw (EGS06)	Longcote (EGS12)
MAPR ( $\text{mm h}^{-1}$ )	0.84	1.10	0.78
RB	0.43	0.59	0.18
FDC_Q1_5	28	32	22
LT (h)	7.7	5.0	6.9
TTP (h)	10.7	8.3	11.7
RR	0.23	0.39	0.19

ANC titration.

## 2.4. Data analysis

### 2.4.1. Long-term hydrometric and geochemical sampling data

To help characterise catchment responses to rainfall, hydrometric data were initially analysed for the three catchments using the complete 15 min frequency time series (October 2011 – September 2017) to generate summary statistics as well as statistics based on a set of ~60 events in each catchment. The data analysis methods used are detailed in S1.3. These data were used to calculate Spearman rank correlation coefficients to highlight any possible relationships between event runoff ratios and event total rainfall depth, rainfall intensity and antecedent rainfall. Summary statistics were also derived from routine (weekly / 2 weekly) geochemical sampling data for May 2015 – May 2017 encompassing the duration of the storm sampling (S1.4).



**Fig. 2.** Boxplots of the composition of stream water samples collected between May 2015 and May 2017, based on weekly routine sampling (September 2015-August 2016) and two-weekly routine sampling at other times. The horizontal line represents the median and the lower and upper hinges correspond to the first and third quartiles. The upper and lower whiskers extend from the hinge to the largest value no further than  $1.5 * \text{the interquartile range (IQR)}$  from the hinge. The notches extend  $1.58 * \text{IQR} / \text{sqrt}(n)$ . This gives a roughly 95% confidence interval for comparing medians. Black circles are outliers. ANC: acid neutralising capacity.



**Table 4**

Summary of hydrograph separations for four events across the three catchments. Note that stream water in the summer event (July 2016) was sampled at Middle Burn and Longcote only as explained in the text. R: Total event rainfall.  $Q_{max}$ : Maximum discharge.  $F_e$ : fraction event water.  $F_p$ : fraction pre-event water.  $F_{soil}$ : fraction soil water.  $F_{gw}$ : fraction groundwater. ' $Q_{tot}$ ' is fraction based on summing event water fraction over whole event (event window is defined in the text) and ' $Q_{max}$ ' is fraction at the maximum Q. ' $\delta^2H$ ' denotes fraction calculation based on  $\delta^2H$  data. 'ANC' denotes fraction calculation based on ANC data.  $TTP$ : Time to peak with subscripts  $p$ ,  $e$  and  $gw$  denoting pre-event, event and groundwater components respectively.  $RR$ : runoff ratio based on separation with  $\delta^2H$  data.

Event	Catchment	R (mm)	$Q_{max}$ (mm h <sup>-1</sup> )	$F_e$ ( $Q_{tot}$ ) ( $\delta^2H$ )	$F_p$ ( $Q_{tot}$ ) ( $\delta^2H$ )	$F_{soil}$ ( $Q_{tot}$ ) ( $\delta^2H$ & ANC)	$F_{gw}$ ( $Q_{tot}$ ) ( $\delta^2H$ )	$F_e$ ( $Q_{max}$ ) ( $\delta^2H$ )	$F_p$ ( $Q_{max}$ ) ( $\delta^2H$ )	$F_{soil}$ ( $Q_{max}$ ) ( $\delta^2H$ & ANC)	$F_{gw}$ ( $Q_{max}$ ) (ANC)	TTP (h)	TTP <sub>p</sub> (h)	TTP <sub>e</sub> (h)	TTP <sub>gw</sub> (h)	RR ( $\delta^2H$ )
29/12/2015	M. Burn (EGS07)	14.6	0.49	0.03	0.97	0.85	0.12	0.07	0.93	0.82	0.11	15.0	15.0	11.8	15.0	0.02
	Shiplaw (EGS06)	14.6	0.58	0.04	0.96	0.74	0.22	0.12	0.88	0.70	0.18	14.8	14.8	13.0	13.8	0.03
	Longcote (EGS12)	24.4	0.49	0.02	0.98	0.63	0.35	0.10	0.9	0.60	0.30	13.2	13.2	13.2	13.3	0.01
20/07/2016	M. Burn (EGS07)	19.0	0.30	0.25	0.75	0.5	0.25	0.34	0.66	0.43	0.23	8.0	8.0	7.3	6.0	0.06
	Longcote (EGS12)	18.4	0.20	0.20	0.8	0.15	0.65	0.32	0.68	0.13	0.55	3.5	1.5	3.8	1.5	0.02
21/11/2016	M. Burn (EGS07)	28.2	0.90	0.25	0.75	0.64	0.11	0.37	0.63	0.53	0.10	16.2	11.5	16.2	17.8	0.18
	Shiplaw (EGS06)	28.2	0.97	0.36	0.64	0.46	0.18	0.54	0.46	0.32	0.14	14.5	7.8	16.0	7.8	0.27
	Longcote (EGS12)	44.2	0.77	0.28	0.72	0.45	0.27	0.48	0.52	0.31	0.21	17.5	24.0	17.5	24.0	0.14
22/02/2017	M. Burn (EGS07)	32.6	0.64	0.12	0.88	0.75	0.13	0.16	0.84	0.74	0.10	55.2	56.2	55.2	55.3	0.08
	Shiplaw (EGS06)	32.6	0.80	0.22	0.78	0.56	0.22	0.34	0.66	0.52	0.14	54.0	54.0	55.0	49.0	0.15
	Longcote (EGS12)	37.8	0.64	0.09	0.91	0.56	0.35	0.10	0.9	0.63	0.27	57.8	61.8	54.2	53.5	0.05

#### 2.4.2. Isotope and ANC event-based hydrograph separation

We used isotope- and ANC-based hydrograph separation to calculate the fractions of pre-event water and groundwater, respectively, in stream discharge at the 2 h stream water sampling time step for each event. Hydrograph separation relies on a number of assumptions and has limitations that have been extensively reviewed elsewhere (Klaus and McDonnell, 2013). Despite these limitations, isotope-based hydrograph separation is considered more objective than separation methods based on hydrometric data alone and provides a useful first approximation of runoff components operating at the catchment scale (Klaus and McDonnell, 2013).

Pre-event water fractions were estimated as follows:

$$Q_t = Q_p + Q_e \quad (1)$$

$$C_t Q_t = C_p Q_p + C_e Q_e \quad (2)$$

$$F_p = \frac{C_t - C_e}{C_p - C_e} \quad (3)$$

$$F_e = 1 - F_p \quad (4)$$

where  $Q_t$  is stream discharge,  $Q_p$  the discharge contribution from pre-event water,  $Q_e$  the discharge contribution from event water,  $C_t$ ,  $C_p$  and  $C_e$  are the  $\delta$  values of stream water, pre-event water and event water, and  $F_p$  and  $F_e$  are the fractions of pre-event and event water in the stream (Klaus and McDonnell, 2006). The analysis was conducted using both  $^{18}\text{O}$  and  $^2\text{H}$ . Both isotopes gave similar results, indicating minimal fractionation effects, so only the  $^2\text{H}$  data are presented here.

To define the pre-event endmember for each stream, we used the mean of the pre-event stream water samples collected on the day prior to the event, as in other studies (Klaus and McDonnell, 2013). For the event endmember, we used both the sequential rainfall samples for each event (except December 2015 when sequential samples were not available) and bulk rainfall samples in order to crosscheck the results.  $F_p$  and  $F_e$  are presented in the subsequent analysis as values at peak discharge using the sample closest to peak discharge ( $F_p(Q_{\max})$  or  $F_e(Q_{\max})$ ) and as a total for the storm based on a sampling window defined by the first sample on the rising limb of the hydrograph and the earliest final sample across the three catchments ( $F_p(Q_{\text{tot}})$  or  $F_e(Q_{\text{tot}})$ ). Time to peak ( $TTP$ ) from the start of the rising limb to the peak discharge and the runoff ratio based on the event water fraction ( $RR$ ) were also calculated (with subscripts  $p$  and  $e$  denoting pre-event and event water respectively). We also carried out sensitivity analyses to assess the influence of throughfall and of snow on hydrograph separation (S1.1).

We used a similar two-component mixing model to estimate the groundwater fraction in runoff during each event, subject to the same assumptions as the isotope-based model:

$$F_{gw} = \frac{A_r - A_s}{A_r - A_{gw}} = \frac{Q_{gw}}{Q_t} \quad (5)$$

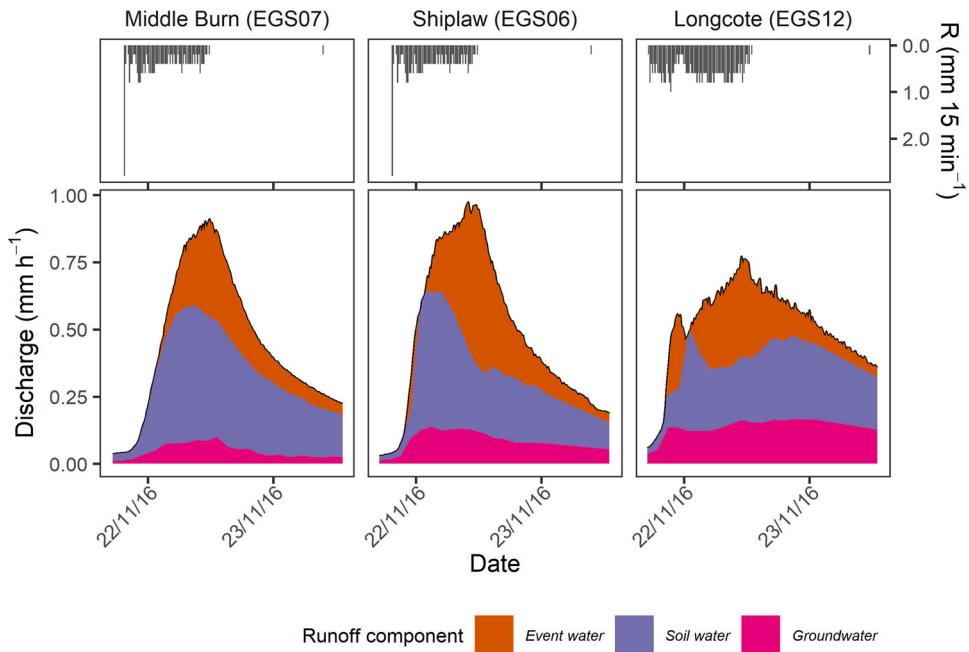


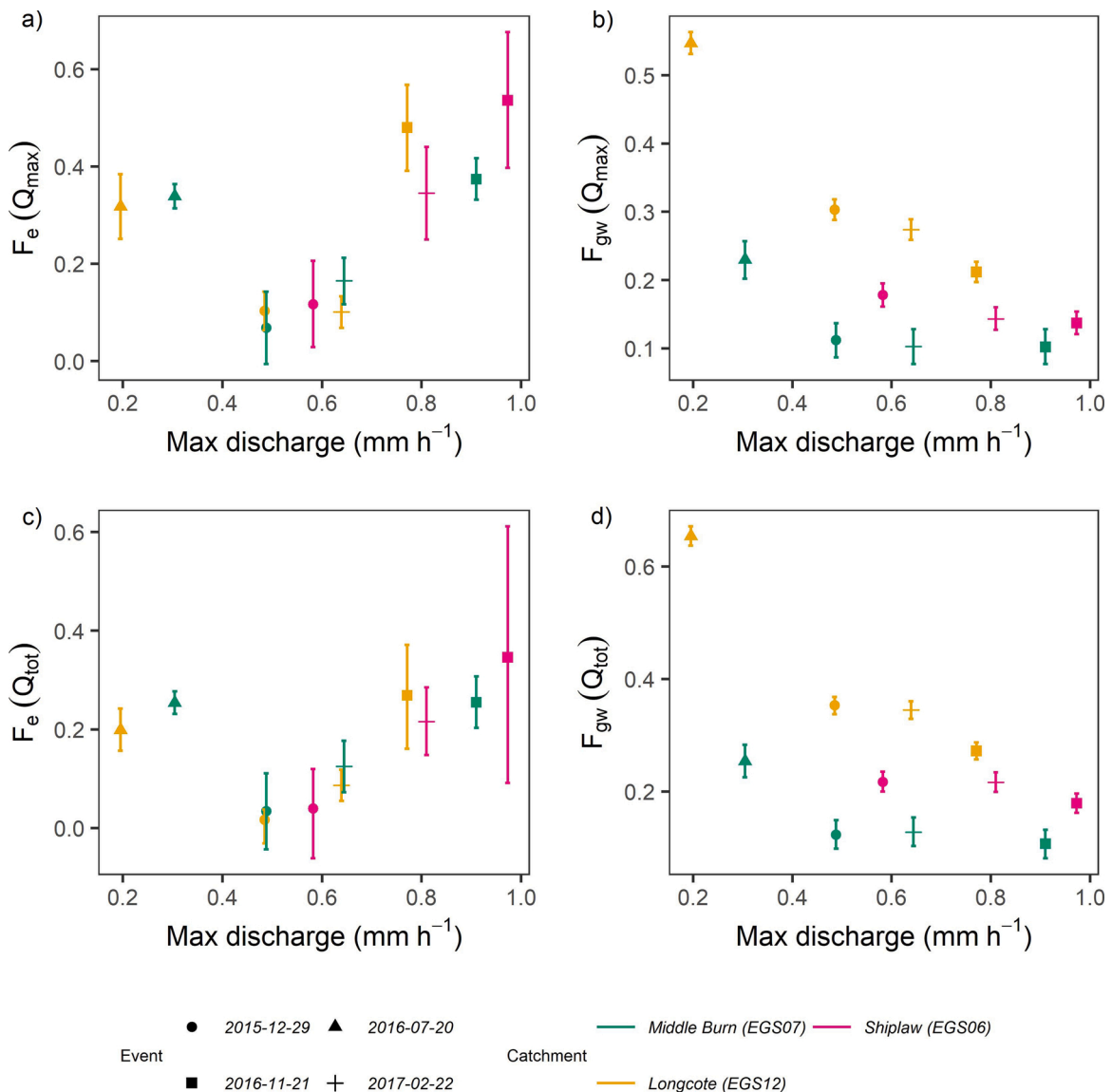
Fig. 3. Three-component hydrograph separation in the November 2016 event.

where  $F_{gw}$  is groundwater fraction,  $Q_t$  is stream discharge,  $Q_{gw}$  is discharge contribution from groundwater,  $A_s$  is ANC of stream water,  $A_r$  is ANC of surface runoff endmember, and  $A_{gw}$  is ANC of groundwater endmember.

The groundwater endmember was defined as the mean ANC of the five lowest flows in each sub-catchment for the period September 2015-August 2016 (based on weekly sampling as discussed in S1.4) similar to other studies (Neal et al., 1997; Soulsby et al., 2003). The surface runoff endmember was defined as zero, as this approximates the ANC of rainfall. The stream water endmember was taken as the ANC at the time of sampling. As for isotope-based hydrograph separation,  $F_{gw}$  is presented in the subsequent analysis as values at peak discharge or total discharge ( $F_{gw}(Q_{max}); F_{gw}(Q_{tot})$ ), and  $TTP_{gw}$  and  $RR_{gw}$  are reported for time to peak and runoff ratios based on groundwater components.

Uncertainties in the pre-event water and groundwater fractions were estimated using the Gaussian error propagation approach of Genereaux et al. (1998), based on 70% confidence intervals which were considered appropriate for analysis of this size of dataset and the uncertainties involved in hydrograph separation (Bazemore et al., 1994). Details of the input parameters for the uncertainty analysis are outlined in S1.5.

Finally, three-component hydrograph separation was conducted using a two-step approach (Klaus and McDonnell, 2013) to approximate soil water based on the difference between the pre-event water and groundwater fractions.



**Fig. 4.** Relationships between event water ( $F_e$ ) or groundwater ( $F_{gw}$ ) fractions and event size, in plots of (a, b) maximum event water (or groundwater) discharge fraction against maximum discharge ( $Q_{max}$ ) and (c, d) total event water (or groundwater) discharge against maximum discharge fraction ( $Q_{max}$ ). Error bars represent 70% confidence intervals calculated as explained in the text.

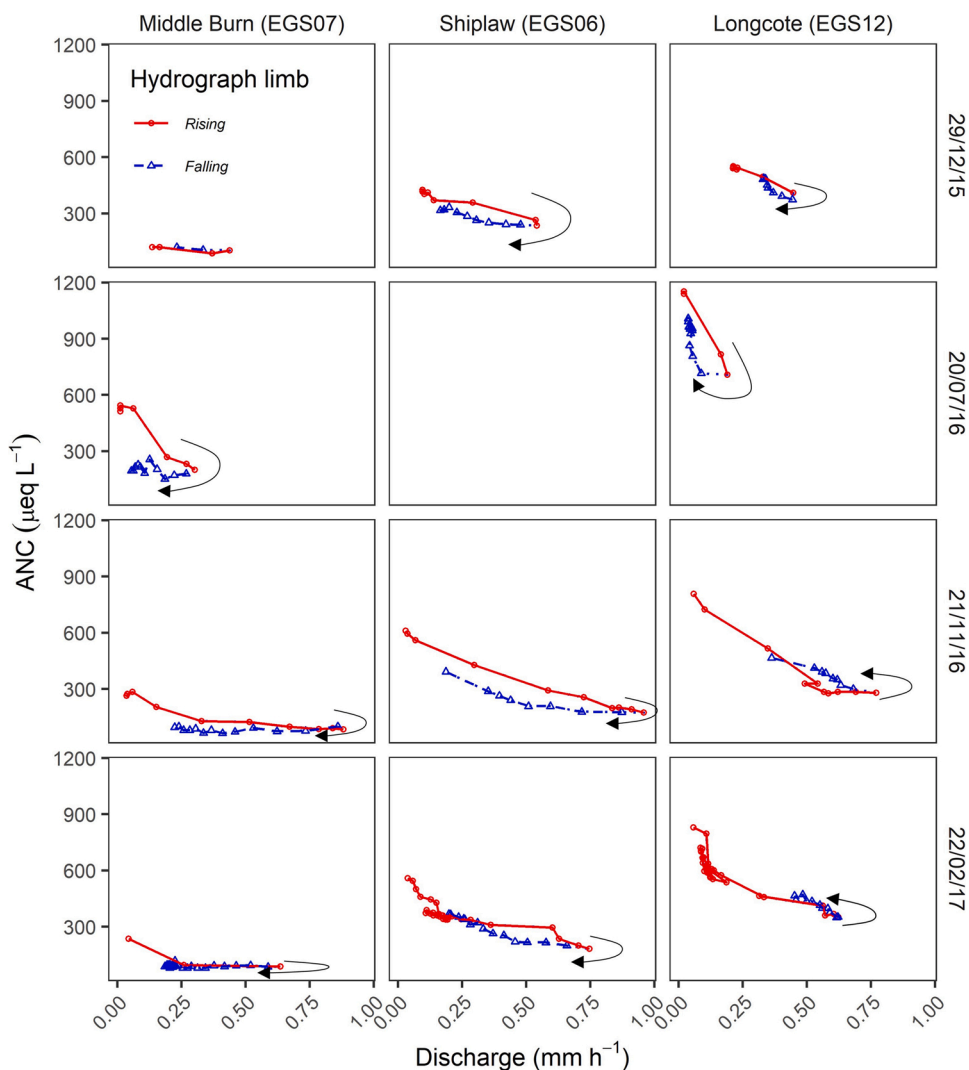


Fig. 5. ANC-discharge plots for four events sampled at 2 hly intervals in the three sub-catchments. Black arrows show direction of hysteresis.

These data were used to compare catchment responses during the different events. Spearman rank correlation coefficients were calculated to highlight any possible relationships between tracer-based event water fractions/runoff ratios and event total rainfall depth, rainfall intensity and antecedent rainfall.

### 3. Results

#### 3.1. Catchment characteristic controls on runoff components

##### 3.1.1. Long-term hydrometric and geochemical sampling data

Analysis of the complete stream discharge time series indicated that the two western catchments, Middle Burn and Shiplaw, were more responsive to rainfall events than the eastern catchment, Longcote (Table 3). The highly forested Middle Burn catchment was less responsive than the adjacent Shiplaw with lower forest cover, but much more responsive than Longcote with the lowest forest cover.

Large differences were also observed in catchment long-term (May 2015 – May 2017) stream water geochemistry (Fig. 2, Fig. S1). Middle Burn was most acidic, and had the lowest ANC and conductivity compared to the other catchments, which may be due to the acidifying effects of the forest; Shiplaw had intermediate values; and Longcote had the highest values. Shiplaw had a wider range of ANC and conductivity compared to the other catchments, which may reflect its greater responsiveness. The median values and range in isotopic composition were similar for Middle Burn and Shiplaw, but notably different for Longcote, reflecting both the proximity of the western catchments and potentially the higher groundwater fraction in Longcote.

### 3.1.2. Event-based hydrograph separation

Overall, despite the responsiveness of the catchments, event water runoff was generally limited. The total event runoff fraction,  $F_e(Q_{tot})$ , was  $<0.36$  for all catchments and events (Table 4). The peak runoff fraction,  $F_e(Q_{max})$  was higher ( $<0.54$ ) in all catchments and events, but with the same relative values as those based on  $F_e(Q_{tot})$ . Groundwater runoff was generally low across the catchments. Total groundwater runoff fraction,  $F_{gw}(Q_{tot})$  was  $<0.35$  for all winter events, though much more variable during the summer event in the two catchments sampled (0.25–0.65).  $F_{gw}(Q_{max})$  showed a similar pattern between catchments and events, but estimates were up to 10% lower than fractions based on totals (Table 4). These low groundwater estimates, combined with low event water estimates result in large soil water fraction estimates in the three-component hydrograph separations.

In terms of the differences between catchments, the hydrograph separation results show a similar pattern to the results based on long term data, with no systematic relationship between forest cover and the fraction of event water runoff. Runoff ratios based on event water estimates from isotope based hydrograph separation indicate that Shiplaw had the highest event water runoff ratios, Longcote the lowest and Middle Burn intermediate values despite having the highest forest cover. Uncertainties in these estimates are large but apparent differences were observed between Shiplaw and Middle Burn for the largest event (November 2016 and February 2017, Table 4). There is good consistency between the relative order of these runoff ratios for each catchment and runoff ratios calculated using the hydrometric data for events over the longer time period (cf. Tables 2 and 4).

Groundwater runoff fractions across the catchments followed a different pattern. They were lowest in Middle Burn (0.13 of total runoff during the largest event), intermediate in Shiplaw and highest in Longcote, although groundwater still contributed 0.27 of total runoff during the largest event. The differences were systematic between catchments and events (Table 4). Despite similar fractions of event water runoff during the intense summer event (July 2016), the groundwater contribution was much higher at Longcote (0.65 of total runoff) than Middle Burn (0.25 of total runoff).

### 3.1.3. Intra-event dynamics

The intra-event isotope/ANC dynamics (Fig. S2-S5) as well as the associated runoff components within events give additional insights into runoff processes. These are best illustrated during the event with the largest discharge peak (Fig. 3). Longcote had a double peak hydrograph (also observed in the hydrometric data for some other events that were not sampled) with an initial rapid discharge of soil water / groundwater, followed by a slower increase in event water during the second peak that was quickly overwhelmed by soil water / groundwater on the falling limb. It was the only catchment with an increase in soil water / groundwater fraction following the hydrograph peak. Shiplaw had some similarities to Longcote, in that the initially high soil water / groundwater inputs were rapidly overwhelmed by event water runoff that dominated the peak of the hydrograph, but decreased rapidly on the falling limb. In Middle Burn, the response was generally more damped with more coincident peaks in event water, soil water and groundwater, and a greater fraction of event water on the falling limb.

## 3.2. Influence of event characteristics on runoff components

Event water and groundwater fractions appear to vary approximately linearly with maximum discharge in the autumn/winter events in all catchments (Fig. 4). The exception was Longcote, which had a less linear response, particularly in the  $F_e(Q_{max})$  values, perhaps due to the higher measured rainfall on the eastern side of the catchment for the largest event or to threshold behaviour. The switch in direction of ANC hysteresis in Longcote between the two smallest and largest events may also be indicative of such behaviour (Fig. 5).

The differences in estimated event water fraction were higher between events than between catchments, suggesting that event characteristics are an important control on runoff partitioning. Spearman rank correlation coefficients between event water fractions and tracer derived runoff ratios, and event total rainfall depth, rainfall intensity and antecedent rainfall, showed some possible associations ( $p = 0.07$  for correlation of runoff ratio with total event rainfall), though it was not possible to determine the main drivers due to the limited number of events sampled. Correlation analysis based on hydrometric data alone for the events during the longer time period suggested that the only significant correlation ( $p < 0.01$ ) was between total runoff and event total rainfall depth.

## 4. Discussion

The results give insights into the role of rapid surface rainfall runoff versus stored water during storm events in this NFM pilot catchment. As we outline below, stored water dominates the hydrograph under most conditions, and appears to be mediated to some extent by forest cover. Across the wider NFM catchment as a whole, other factors such as soils and geology are a more dominant control. However, these catchment characteristics appear to be dominated by the event magnitude. As we discuss, these findings have implications for locating NFM interventions involving land use change and the level of benefits we might expect from these flood risk management approaches. They also demonstrate how tracers can complement more traditional hydrometric techniques in the evaluation of NFM.

### 4.1. Pre-event and subsurface sources of runoff during events

Pre-event water was an important fraction of stream discharge in all sampled events and sub-catchments, constituting the dominant fraction of total runoff ( $>0.64$ ). This finding is consistent with many other isotope-based hydrograph separation studies that have demonstrated the importance of pre-event water (e.g. Bonell et al., 1990; McDonnell, 1990; Pearce et al., 1986; Sklash and Farvolden,

1979). Findings were similar using either  $^2\text{H}$  or  $^{18}\text{O}$ , with differences in the event fractions of  $\pm 7\%$ , which were lower than the error propagation estimates. Nevertheless, there was high variability in pre-event water fraction between different events, suggesting that humid forested catchments may have more variable pre-event fractions than many early studies suggested (Fischer et al., 2017). There was also relatively low spatial variability in bulk precipitation isotopic composition for different events across different parts of the catchment, in contrast to some studies (Fischer et al., 2017; McGuire et al., 2005), suggesting that in this environment isotopic tracers can provide a useful tool for understanding event runoff. Further research is warranted on the effects of throughfall on isotopic composition. Assuming the bulk throughfall  $\delta^{18}\text{O}$  and  $\delta^2\text{H}$  value differences to storm rainfall reported in Kubota and Tsuboyama (2003), we estimated that  $F_e (Q_{\max})$  ranged from 12% lower to 17% higher than estimates based on the sampled rainfall across the different events in Middle Burn. However, this did not alter the relative order of catchments in terms of their event water runoff fractions.

Groundwater was a small fraction of stream discharge during the winter events, although variable between catchments and important in Longcote where it still constituted 21% of stream discharge during the largest event. The small groundwater fraction implies that soil water is an important water source in these temperate upland catchments. This is consistent with studies in similar catchments with poorly permeable bedrock (or superficial deposits), where surface runoff and shallow subsurface runoff in soils tend to dominate (Tetzlaff et al., 2007b). Groundwater appears to be more important in summer events, but testing this hypothesis would require sampling larger and more summer events.

#### 4.2. Forest cover and management controls on event runoff fractions

Comparisons between Shiplaw and Middle Burn suggest that forest cover has some influence on event water fraction. In these paired catchments, the total event water fraction in the forested Middle Burn catchment was consistently lower across the sampled events, and in the largest event it was 11% lower (and 17% lower at peak discharge). We are not aware of data on event water fractions from similar environments with NFM schemes in the UK, but reductions due to forest cover are consistent with other studies generally (Buttle, 1994), although not as high as reductions seen in other areas. For instance, Muñoz-Villers and McDonnell (2013) reported  $\sim 24\%$  difference in event water contributions between forest and pasture in a tropical environment due mainly to (much higher) contrasts in infiltration rates between the two land uses, and to a lesser extent to canopy interception. Considering this evidence, and the infiltration data we have from the wider Eddleston catchment and similar environments in the UK ( $3.4/0.026 \text{ m d}^{-1}$  (A/B horizon) for grassland, versus  $8.3 \text{ m d}^{-1}$  for forest Marshall et al., 2009), we suggest that the reductions in event water in Middle Burn compared to Shiplaw are linked to relative differences in exceedance of rainfall infiltration capacity between forest and grassland areas and resulting reductions in overland flow in the forested areas. Interception by the forest is also likely to have led to reductions in the event water fraction as reported in other studies (Roa-García and Weiler, 2010).

Forest management methods (particularly drainage in site preparation and compaction during harvesting) and under-field drainage in improved grassland may introduce uncertainties. The effects of drainage systems in similar temperate environments are poorly studied, particularly at catchment scale, and are highly variable depending on factors such as drain spacing, soil type and antecedent conditions (Dadson et al., 2017). Open forest drainage ditches and compaction are likely to have increased the fraction of event water runoff compared to undrained forest, although, as already noted, the effects of drainage ditches and compaction are expected to be minimal in the study catchments. Under-field drainage is also likely to have increased event water runoff fraction under the wet antecedent conditions of most of the storms we investigated, but less so than increases due to drainage in the forest. The net effect of drainage in both the Middle Burn and Shiplaw catchments is a likely decrease in the difference in event water fractions between them, though it is unlikely to have changed the results we have reported. These relative effects of drainage would benefit from further study in this catchment and elsewhere in the UK, given that around 61% of agricultural land in the UK is drained (Wiskow and van der Ploeg, 2003).

#### 4.3. Soil, geological and meteorological controls on runoff fractions

Comparisons between the western (Shiplaw, Middle Burn) catchments and the eastern catchment (Longcote) illustrate the wide variation in response across the wider NFM catchment. Event water fractions were up to 48% lower in Longcote compared to Shiplaw (whilst up to 33% lower in Middle Burn). Longcote responded rapidly to rainfall, though with lower peak discharge, slow recession rates and double peak hydrographs, as well as high groundwater and soil water fractions. These findings suggest a dominance of subsurface flow despite the steeper catchment topography and low forest cover. Given the poorly permeable bedrock in Longcote, subsurface flow is most likely to occur in the soils, superficial deposits and weathered bedrock. This is in contrast to some hydrograph separation studies in steep catchments that have reported positive correlations between slope and event water fraction (Suecker et al., 2000).

There is some uncertainty in whether the lower event water fractions in the Longcote catchment are related to lower levels of disturbance (and particularly the acid grassland, heathland and bracken land cover with an expected higher roughness and infiltration) or to the underlying soils and geology. Research on catchment disturbance has frequently found evidence of increased runoff and event water fraction in more disturbed catchments (e.g. Monteith et al., 2006; Nainar et al., 2018). However, the higher groundwater fraction and the nature of the stream response, suggest that more permeable soils and superficial deposits are particularly important in controlling event water fractions. This corresponds with research in other Scottish upland catchments, which has demonstrated the importance of freely draining soils and glacial drift deposits in controlling catchment flow paths, leading to much longer transit times even on steeper slopes (e.g. Soulsby et al., 2006). Regardless of these uncertainties, a conclusion emerging from our results that is

relevant to planning NFM interventions more widely is the likely limited effect on flood risk of hillslope afforestation in areas already dominated by deeper subsurface flow.

The small number of storms sampled make it difficult to test how different meteorological characteristics (in terms of total rainfall depth, intensity and API) control event runoff fractions. However, given that there were greater differences in event runoff between events than between catchments, these characteristics may be more important controls on the fraction of event water in the hydrograph than catchment characteristics. Fischer et al. (2017) reported a similar hierarchy of influences controlling pre-event water fraction across multiple storms in pre-alpine catchments. Antecedent conditions may be particularly important, as suggested by the large contrast between summer and winter events, and in Longcote the switch in hysteresis direction, which has been linked to the changing inputs of hillslope soil water in streams under different wetness states (Zuecco et al., 2016).

#### 4.4. Implications for natural flood management policy

Our study demonstrates the importance of the displacement of pre-event water in runoff mechanisms in landscapes subject to NFM interventions, implying that saturated overland flow may not be a dominant runoff mechanism even in relatively responsive catchments. The results also suggest that upland afforestation can influence the partitioning of runoff at the catchment scale, so could be used to manipulate flow paths in NFM. However, the effects might be minimal for the largest events compared to improved grassland areas, which NFM measures frequently target, due to the limited effects of forests on infiltration and transient storage (Soulsby et al., 2017; Tetzlaff et al., 2007a) and relatively high infiltration rates in improved grasslands in many UK upland environments. These findings support suggestions in the NFM literature that climatic conditions and individual storm event characteristics dominate over catchment characteristics in influencing peak flows in the largest events (Dadson et al., 2017). In other regions, for example where grasslands are severely degraded, forest planting may have a greater effect on reducing event water runoff fractions (van Meerveld et al., 2019; Zwartendijk et al., 2017).

The implication of these results is that in areas of more permeable geology and soils, similar to the Longcote catchment, hillslope afforestation may have limited benefit as a NFM strategy (we do not consider the effects of riparian or floodplain planting), although woodland may of course bring other benefits. Therefore, hillslope planting for NFM should target other areas, in particular areas with compacted soils overlying relatively permeable soils or geology, where forest planting may help to connect runoff to streams via the groundwater zone. In this case the location of forest cover and the type of trees become important, as discussed by Neal et al. (1997) who suggested long term experiments with more deeply rooting trees. To take account of these mechanisms in NFM, implementation might require greater consideration of subsurface features. Flood vulnerability maps used to determine the location of woodland-related NFM interventions in the UK consider some proxies for soil and related geological substrate permeability at a coarse resolution (Environment Agency, 2018), but should include further consideration of the interaction with factors such as the degree of compaction and depth to groundwater. Targeted tracer studies could improve such process understanding, helping better constrain models to detect change as well as quantify co-benefits of NFM interventions involving woodland, such as increased biodiversity, carbon storage and water quality (Jacob et al., 2014; Keesstra et al., 2018). Of course, there are practical challenges, given high costs associated with tracer studies, but the increasing availability of in-situ high frequency sensors for tracers such as conductivity, temperature and potentially isotopic tracers (Berman et al., 2009) mean that such approaches could be incorporated into NFM planning and monitoring.

## 5. Conclusions

To our knowledge this is the first study using natural tracers at the catchment scale to investigate runoff mechanisms in UK-based NFM projects. It gives insights into the diversity of runoff mechanisms operating during storm events across different upland catchments. The results suggest that pre-event water is an important fraction of stream discharge during events for the size of catchments (< 10 km<sup>2</sup>) and events (< 20% of the mean annual flood) for which there is currently some evidence that forest cover could have an impact on discharge (Dadson et al., 2017). The study also suggests that plantation forest cover reduces the fraction of event water runoff in streams over this range of event magnitudes. However, the effects of these differences in land cover may be dominated by differences in event characteristics, suggesting limited impacts of land cover for the largest events. Since many NFM measures are designed to target event water, this implies a need for careful consideration of the types and locations of NFM interventions to ensure they are effective. Finally, the study demonstrates the potential utility of using tracers in NFM for understanding runoff processes and monitoring co-benefits such as surface water and groundwater pollution management.

### Author statement

**Leo Peskett:** Conceptualization, Methodology, Investigation, Formal Analysis, Writing - Original Draft, Writing - Review & Editing, Funding acquisition. **Kate Heal:** Conceptualization, Methodology, Writing- Original draft, Writing - Review & Editing, Funding acquisition. **Alan MacDonald:** Conceptualization, Methodology, Writing- Original draft, Funding acquisition. **Andrew Black:** Investigation, Data curation, Writing - Review & Editing. **Jeffrey McDonnell:** Resources, Writing - Review & Editing.

### Funding

This work was supported by L. Peskett's NERC E3 DTP /BGS BUFI PhD studentship (grant number NE/L002558/1) and a NERC

Research Experience Placement grant to R. Fairhurst; a SAGES Postdoctoral & Early Career Researcher Exchange (PECRE) grant supporting collaboration with J. McDonnell; in-kind contributions and loan of equipment from the School of GeoSciences and BGS Edinburgh; and financial support from the Tweed Forum for paper drafting.

### Declaration of competing interest

The authors declare that they have no known competing financial interests or personal relationships that could have appeared to influence the work reported in this paper.

### Acknowledgements

We would like to thank the landowners for giving us access to the sites and the Tweed Forum for helping to enable this work through collaboration with the Eddleston Water Project (a collaboration between Scottish Government, Tweed Forum, SEPA, University of Dundee, British Geological Survey, Scottish Borders Council and others). We would also like to thank Kirsty Upton, Robert Fairhurst and Adam Francis, for their help with fieldwork.

### Appendix A. Supplementary data

Supplementary data related to this article can be found, in the online version, at doi:<https://doi.org/10.1016/j.ejrh.2021.100834>.

### References

- Aitken, J.H., Lovell, J.H., Shaw, A.J., Thomas, C.W., 1984. *The Sand and Gravel Resources of the Country Around Dalkeith and Temple, Lothian Region: Description of 1:25000 Sheets NT 25 and 35, and NT 26 and 36, Mineral Assessment Report*. British Geological Survey, Edinburgh.
- Alila, Y., Kuraš, P.K., Schnorbus, M., Hudson, R., 2009. Forests and floods: a new paradigm sheds light on age-old controversies. *Water Resour. Res.* 45, W08416 <https://doi.org/10.1029/2008WR007207>.
- Archer, N.A.L., Bonell, M., Coles, N., MacDonald, A.M., Auton, C.A., Stevenson, R., 2013. Soil characteristics and landcover relationships on soil hydraulic conductivity at a hillslope scale: a view towards local flood management. *J. Hydrol.* 497, 208–222. <https://doi.org/10.1016/j.jhydrol.2013.05.043>.
- Auton, C., 2011. *Eddleston Water Catchment, Superficial Geology, 1: 25 000 Scale*. British Geological Survey.
- Baker, D.B., Richards, R.P., Loftus, T.T., Kramer, J.W., 2004. A new flashiness index: characteristics and applications to Midwestern rivers and streams. *J. Am. Water Resour. Assoc.* 40, 503–522. <https://doi.org/10.1111/j.1752-1688.2004.tb01046.x>.
- Bathurst, J.C., Fahey, B., Iroum e, A., Jones, J., 2020. Forests and floods: using field evidence to reconcile analysis methods. *Hydrol. Process.* 1–16. <https://doi.org/10.1002/hyp.13802>.
- Bazemore, D.E., Eshleman, K.N., Hollenbeck, K.J., 1994. The role of soil water in stormflow generation in a forested headwater catchment: synthesis of natural tracer and hydrometric evidence. *J. Hydrol.* 162, 47–75. [https://doi.org/10.1016/0022-1694\(94\)90004-3](https://doi.org/10.1016/0022-1694(94)90004-3).
- Berman, E.S.F., Gupta, M., Gabrielli, C., Garland, T., McDonnell, J.J., 2009. High-frequency field-deployable isotope analyzer for hydrological applications. *Water Resour. Res.* 45, W10201 <https://doi.org/10.1029/2009WR008265>.
- Black, A.R., Peskett, L.M., MacDonald, A.M., Young, A., Spray, C., Ball, T., ThomasWerritty, H.A., 2021. Natural flood management, lag time and catchment scale: results from an empirical nested catchment study. *J. Flood Risk Manag.* 12717 <https://doi.org/10.1111/jfr3.12717>.
- Bond, S., Kirkby, M.J., Johnston, J., Crowle, A., Holden, J., 2020. Seasonal vegetation and management influence overland flow velocity and roughness in upland grasslands. *Hydrol. Process.* 34, 3777–3791. <https://doi.org/10.1002/hyp.13842>.
- Bonell, M., Pearce, A.J., Stewart, M.K., 1990. The identification of runoff-production mechanisms using environmental isotopes in a tussock grassland catchment, eastern Otago, New Zealand. *Hydrol. Process.* 4, 15–34. <https://doi.org/10.1002/hyp.3360040103>.
- Bosch, J.M., Hewlett, J.D., 1982. A review of catchment experiments to determine the effect of vegetation changes on water yield and evapotranspiration. *J. Hydrol.* 55, 3–23. [https://doi.org/10.1016/0022-1694\(82\)90117-2](https://doi.org/10.1016/0022-1694(82)90117-2).
- Brackley, L.J., Wainwright, J., Ali, G.A., Tetzlaff, D., Smith, M.W., Reaney, S.M., Roy, A.G., 2013. Concepts of hydrological connectivity: research approaches, pathways and future agendas. *Earth-Sci. Rev.* 119, 17–34. <https://doi.org/10.1016/j.earscirev.2013.02.001>.
- Brown, V.A., McDonnell, J.J., Burns, D.A., Kendall, C., 1999. The role of event water, a rapid shallow flow component, and catchment size in summer stormflow. *J. Hydrol.* 217, 171–190. [https://doi.org/10.1016/S0022-1694\(98\)00247-9](https://doi.org/10.1016/S0022-1694(98)00247-9).
- Brown, A.E., Zhang, L., McMahon, T.A., Western, A.W., Vertessy, R.A., 2005. A review of paired catchment studies for determining changes in water yield resulting from alterations in vegetation. *J. Hydrol.* 310, 28–61. <https://doi.org/10.1016/j.jhydrol.2004.12.010>.
- Buttle, J.M., 1994. Isotope hydrograph separations and rapid delivery of pre-event water from drainage basins. *Prog. Phys. Geogr. Earth Environ.* 18, 16–41. <https://doi.org/10.1177/030913339401800102>.
- Carrick, J., Rahim, M.S.A.B.A., Adjei, C., Kalee, H.H.H.A., Banks, S.J., Bolam, F.C., Luna, I.M.C., Clark, B., Cowton, J., Domingos, I.F.N., Golicha, D.D., Gupta, G., Grainger, M., Hasanaliyeva, G., Hodgson, D.J., Lopez-Capel, E., Magistrali, A.J., Merrell, I.G., Oikeh, I., Othman, M.S., Mudiyansele, T.K.R.R., Samuel, C.W.C., Sufar, E.K., Watson, P.A., Zakaria, N.N.A.B., Stewart, G., 2018. Is planting trees the solution to reducing flood risks? *J. Flood Risk Manag.* 12, e12484 <https://doi.org/10.1111/jfr3.12484>.
- Dadson, S., Hall, J., Murgatroyd, A., Acreman, M., Bates, P., Beven, K., Heathwaite, L., Holden, J., Holman, I., Lane, S., O'Connell, E., Penning-Rowell, E., Reynard, N., Sear, D., Thorne, C., Wilby, R., 2017. A restatement of the natural science evidence concerning catchment-based 'natural' flood management in the UK. *Proc. R. Soc. A* 473, 20160706. <https://doi.org/10.1098/rspa.2016.0706>.
- Dingman, S.L., 2014. *Physical Hydrology*, third edition. ed. Waveland Press, Illinois.
- EEA, 2017. *Green Infrastructure and Flood Management: Promoting Cost-efficient Flood Risk Reduction Via Green Infrastructure Solutions (No. 14)*. European Environment Agency, Luxembourg.
- Environment Agency, 2017. *Working with Natural Processes to Reduce Flood Risk: The Evidence Behind Natural Flood Management v2.0*. Environment Agency, Bristol.
- Environment Agency, 2018. *Mapping the Potential for Working with Natural Processes – Technical Report (No. SC150005)*. Environment Agency, Bristol.
- Environment Agency, 2020. *NFM Projects Monitoring and Evaluation Tool v2.501 [WWW Document]*. URL <https://www.arcgis.com/apps/MapSeries/index.html?appid=5086d50ee3bc49f1bd25b039c7129c1a> (accessed 20.10.20).
- Fischer, B.M.C., St ahli, M., Seibert, J., 2017. Pre-event water contributions to runoff events of different magnitude in pre-alpine headwaters. *Hydrol. Res.* 48, 28–47. <https://doi.org/10.2166/nh.2016.176>.



- Geris, J., Tetzlaff, D., McDonnell, J., Soulsby, C., 2015. The relative role of soil type and tree cover on water storage and transmission in northern headwater catchments. *Hydrol. Process.* 29, 1844–1860. <https://doi.org/10.1002/hyp.10289>.
- Graham, M.T., Ball, D.F., Ó Dochartaigh, B.É., MacDonald, A.M., 2009. Using transmissivity, specific capacity and borehole yield data to assess the productivity of Scottish aquifers. *Q. J. Eng. Geol. Hydrogeol.* 42, 227–235. <https://doi.org/10.1144/1470-9236/08-045>.
- Granger, R.J., Gray, D.M., 1989. Evaporation from natural unsaturated surfaces. *J. Hydrol.* 111, 21–29. [https://doi.org/10.1016/0022-1694\(89\)90249-7](https://doi.org/10.1016/0022-1694(89)90249-7).
- Gremillion, P., Gonyeau, A., Wanielieta, M., 2000. Application of alternative hydrograph separation models to detect changes in flow paths in a watershed undergoing urban development. *Hydrol. Process.* 14, 1485–1501. [https://doi.org/10.1002/1099-1085\(20000615\)14:8<1485::AID-HYP988>3.0.CO;2-1](https://doi.org/10.1002/1099-1085(20000615)14:8<1485::AID-HYP988>3.0.CO;2-1).
- Hankin, B., Metcalfe, P., Johnson, D., Chappell, N.A., Page, T., Craigen, I., Lamb, R., Beven, K., 2017. Strategies for testing the impact of natural flood risk management measures. In: Hromadka, T., Rao, P. (Eds.), *Flood Risk Management*. IntechOpen, pp. 1–39. <https://doi.org/10.5772/intechopen.68677>.
- Harrison, J.G., 2012. *Eddleston Water: Historical Change in Context*. Historical Service, Stirling.
- Hasenmueller, E.A., Criss, R.E., Winston, W.E., Shaughnessy, A.R., 2017. Stream hydrology and geochemistry along a rural to urban land use gradient. *Appl. Geochem.* 83, 136–149. <https://doi.org/10.1016/j.apgeochem.2016.12.010>.
- Iacob, O., Rowan, J.S., Brown, I., Ellis, C., 2014. Evaluating wider benefits of natural flood management strategies: an ecosystem-based adaptation perspective. *Hydrol. Res.* 45, 774–787. <https://doi.org/10.2166/nh.2014.184>.
- IAEA, 2009. *Laser Spectroscopic Analysis of Liquid Water Samples for Stable Hydrogen and Oxygen Isotopes (No. 35), Training Course Series*. International Atomic Energy Agency, Vienna.
- Kay, A.L., Old, G.H., Bell, V.A., Davies, H.N., Trill, E.J., 2019. An assessment of the potential for natural flood management to offset climate change impacts. *Environ. Res. Lett.* 14, 044017. <https://doi.org/10.1088/1748-9326/aafdb>.
- Keesstra, S., Nunes, J., Novara, A., Finger, D., Avelar, D., Kalantari, Z., Cerdà, A., 2018. The superior effect of nature based solutions in land management for enhancing ecosystem services. *Sci. Total Environ.* 610–611, 997–1009. <https://doi.org/10.1016/j.scitotenv.2017.08.077>.
- Kendall, C., McDonnell, J.J. (Eds.), 1998. *Isotope Tracers in Catchment Hydrology*, first ed. Elsevier, Amsterdam. <https://doi.org/10.1016/C2009-0-10239-8>.
- Kennedy, V.C., Zellweger, G.W., Avanzino, R.J., 1979. Variation of rain chemistry during storms at two sites in northern California. *Water Resour. Res.* 15, 687–702. <https://doi.org/10.1029/WR015i003p0687>.
- Klaus, J., McDonnell, J.J., 2013. Hydrograph separation using stable isotopes: review and evaluation. *J. Hydrol.* 505, 47–64. <https://doi.org/10.1016/j.jhydrol.2013.09.006>.
- Kohler, M.A., Linsley, R.K., 1951. *Predicting the Runoff from Storm Rainfall*. US Department of Commerce, Weather Bureau, Washington DC.
- Kubota, T., Tsuboyama, Y., 2003. Intra- and inter-storm oxygen-18 and deuterium variations of rain, throughfall, and stemflow, and two-component hydrograph separation in a small forested catchment in Japan. *J. For. Res.* 8, 179–190. <https://doi.org/10.1007/s10310-002-0024-9>.
- Lane, S.N., 2017. Natural flood management. *Wiley Interdiscip. Rev. Water* 4, e1211. <https://doi.org/10.1002/wat2.1211>.
- Lunka, P., Patil, S.D., 2016. Impact of tree planting configuration and grazing restriction on canopy interception and soil hydrological properties: implications for flood mitigation in silvopastoral systems. *Hydrol. Process.* 30, 945–958. <https://doi.org/10.1002/hyp.10630>.
- MacDonald, A., Maurice, L., Dobbs, M., Reeves, H., Auton, C., 2012. Relating in situ hydraulic conductivity, particle size and relative density of superficial deposits in a heterogeneous catchment. *J. Hydrol.* 434, 130–141. <https://doi.org/10.1016/j.jhydrol.2012.01.018>.
- Marshall, M.R., Francis, O.J., Frogbrook, Z.L., Jackson, B.M., McIntyre, N., Reynolds, B., Solloway, I., Wheatley, H.S., Chell, J., 2009. The impact of upland land management on flooding: results from an improved pasture hillslope. *Hydrol. Process.* 23, 464–475. <https://doi.org/10.1002/hyp.7157>.
- McDonnell, J.J., 1990. A rationale for old water discharge through Macropores in a steep, humid catchment. *Water Resour. Res.* 26, 2821–2832. <https://doi.org/10.1029/WR026i011p02821>.
- McGuire, K.J., McDonnell, J.J., Weiler, M., Kendall, C., McGlynn, B.L., Welker, J.M., Seibert, J., 2005. The role of topography on catchment-scale water residence time. *Water Resour. Res.* 41. <https://doi.org/10.1029/2004WR003657>.
- Medcalf, J., Williams, H., 2010. *Scottish borders council and tweed forum consortium tweed aerial survey phase 2: aerial photography interpretation land cover classification & habitat mapping*. Final Report. Scottish Borders Council and Tweed Forum, Melrose.
- Monteith, S.S., Buttler, J.M., Hazlett, P.W., Beall, F.D., Semkin, R.G., Jeffries, D.S., 2006. Paired-basin comparison of hydrologic response in harvested and undisturbed hardwood forests during snowmelt in central Ontario: II. Streamflow sources and groundwater residence times. *Hydrol. Process.* 20, 1117–1136. <https://doi.org/10.1002/hyp.6073>.
- Muñoz-Villiers, L.E., McDonnell, J.J., 2012. Runoff generation in a steep, tropical montane cloud forest catchment on permeable volcanic substrate. *Water Resour. Res.* 48, W09528. <https://doi.org/10.1029/2011WR011316>.
- Muñoz-Villiers, L.E., McDonnell, J.J., 2013. Land use change effects on runoff generation in a humid tropical montane cloud forest region. *Hydrol. Earth Syst. Sci.* 17, 3543–3560. <https://doi.org/10.5194/hess-17-3543-2013>.
- Murphy, T.R., Hanley, M.E., Ellis, J.S., Lunt, P.H., 2020. Native woodland establishment improves soil hydrological functioning in UK upland pastoral catchments. *Land Degrad. Dev.* <https://doi.org/10.1002/ldr.3762>.
- Nainar, A., Tanaka, N., Bidin, K., Annammala, K.V., Ewers, R.M., Reynolds, G., Walsh, R.P.D., 2018. Hydrological dynamics of tropical streams on a gradient of land-use disturbance and recovery: a multi-catchment experiment. *J. Hydrol.* 566, 581–594. <https://doi.org/10.1016/j.jhydrol.2018.09.022>.
- Neal, C., 2001. Alkalinity measurements within natural waters: towards a standardised approach. *Sci. Total Environ.* 265, 99–113. [https://doi.org/10.1016/S0048-9697\(00\)00652-5](https://doi.org/10.1016/S0048-9697(00)00652-5).
- Neal, C., Hill, T., Hill, S., Reynolds, B., 1997. Acid neutralization capacity measurements in surface and ground waters in the Upper River Severn, Plympton: from hydrograph splitting to water flow pathways. *Hydrol. Earth Syst. Sci. Discuss.* 1, 687–696. <https://doi.org/10.5194/hess-1-687-1997>.
- NFM Network Scotland, 2020. *Scottish Case Study Finder | Natural Flood Management Network Scotland [WWW Document]*. URL <https://www.nfm.scot/case-studies> (accessed 04.11.20).
- Ngai, R., Wilkinson, M., Nisbet, T., Harvey, R., Addy, S., Burgess-Gamble, L., Rose, S., Maslen, S., Nicholson, A., Page, T., Jonczyk, J., Quinn, P., 2017. *Working With Natural Processes – Evidence Directory, Appendix 2: Literature Review*, Project Report, SC150005. Environment Agency, Bristol, UK, p. 323. URL [https://assets.publishing.service.gov.uk/government/uploads/system/uploads/attachment\\_data/file/654443/Working\\_with\\_natural\\_processes\\_evidence\\_directory\\_appendix\\_2\\_literature\\_review.pdf](https://assets.publishing.service.gov.uk/government/uploads/system/uploads/attachment_data/file/654443/Working_with_natural_processes_evidence_directory_appendix_2_literature_review.pdf) (accessed 09.02.2021).
- Novara, A., Gristina, L., Guaitoli, F., Santoro, A., Cerdà, A., 2013. Managing soil nitrate with cover crops and buffer strips in Sicilian vineyards. *Solid Earth* 4, 255–262. <https://doi.org/10.5194/se-4-255-2013>.
- Ó Dochartaigh, B.É., MacDonald, A.M., Fitzsimons, V., Ward, R., 2015. *Scotland's Aquifers and Groundwater Bodies (Open Report No. OR/15/028)*. British Geological Survey, Keyworth.
- Ordnance Survey, 2016. *Terrain 5 DTM [TIFF Geospatial Data], Scale 1:10000, Tiles: nt13,nt14,nt15,nt23,nt24,nt25,nt33,nt34,nt35,nt35, Updated: 10 February 2016*. Ordnance Survey (GB), Using: EDINA Digimap Ordnance Survey Service. <<http://digimap.edina.ac.uk>>, Downloaded: April 2016.
- Pearce, A.J., Stewart, M.K., Sklash, M.G., 1986. Storm runoff generation in humid headwater catchments: 1. Where does the water come from? *Water Resour. Res.* 22, 1263–1272. <https://doi.org/10.1029/WR022i008p01263>.
- Peskett, L., 2020. *Catchment Subsurface Water Storage, Mixing and Flowpaths: Implications for Land Cover Change as a Natural Flood Management Strategy*. PhD Thesis. University of Edinburgh.
- Pfister, L., Martínez-Carreras, N., Hissler, C., Klaus, J., Carrer, G.E., Stewart, M.K., McDonnell, J.J., 2017. Bedrock geology controls on catchment storage, mixing, and release: a comparative analysis of 16 nested catchments. *Hydrol. Process.* 31, 1828–1845. <https://doi.org/10.1002/hyp.11134>.
- Roa-García, M.C., Weiler, M., 2010. Integrated response and transit time distributions of watersheds by combining hydrograph separation and long-term transit time modeling. *Hydrol. Earth Syst. Sci. Discuss.* 14, 1537–1549. <https://doi.org/10.5194/hess-14-1537-2010>.
- Robinson, M., 1986. Changes in catchment runoff following drainage and afforestation. *J. Hydrol.* 86, 71–84. [https://doi.org/10.1016/0022-1694\(86\)90007-7](https://doi.org/10.1016/0022-1694(86)90007-7).
- Robinson, M., 1998. 30 years of forest hydrology changes at Coalburn: water balance and extreme flows. *Hydrol. Earth Syst. Sci. Discuss.* 2, 233–238. <https://doi.org/10.5194/hess-2-233-1998>.

- Rounds, S.A., 2012. Alkalinity and Acid Neutralizing Capacity (ver. 4.0): U.S. Geological Survey Techniques of Water-resources Investigations, Book 9, Chap. A6, sec. 6.6. U.S. Geological Survey, Reston, VA.
- Seibert, J., McDonnell, J.J., 2010. Land-cover impacts on streamflow: a change-detection modelling approach that incorporates parameter uncertainty. *Hydrol. Sci. J.* 55, 316–332. <https://doi.org/10.1080/02626661003683264>.
- Sklash, M.G., Farvolden, R.N., 1979. The role of groundwater in storm runoff. *Dev. Water Sci.* 12, 45–65. [https://doi.org/10.1016/0022-1694\(79\)90164-1](https://doi.org/10.1016/0022-1694(79)90164-1).
- Soil Survey of Scotland Staff, 1970. *Soil Maps of Scotland (Partial Coverage) at a Scale of 1:25 000*.
- Soulsby, C., Rodgers, P., Smart, R., Dawson, J., Dunn, S., 2003. A tracer-based assessment of hydrological pathways at different spatial scales in a mesoscale Scottish catchment. *Hydrol. Process.* 17, 759–777.
- Soulsby, C., Tetzlaff, D., Rodgers, P., Dunn, S.M., Waldron, S., 2006. Runoff processes, stream water residence times and controlling landscape characteristics in a mesoscale catchment: an initial evaluation. *J. Hydrol.* 325, 197–221. <https://doi.org/10.1016/j.jhydrol.2005.10.024>.
- Soulsby, C., Dick, J., Scheliga, B., Tetzlaff, D., 2017. Taming the flood—how far can we go with trees? *Hydrol. Process.* 31, 3122–3126. <https://doi.org/10.1002/hyp.11226>.
- Stratford, C., Miller, J., House, A., Old, G., Acreman, M., Duenas-Lopez, M.A., Nisbet, T., Burgess-Gamble, L., Chappell, N., Clarke, S., 2017. Do Trees in UK-relevant River Catchments Influence Fluvial Flood Peaks? A Systematic Review (No. 1). Centre for Ecology & Hydrology, Wallingford.
- Suecker, J.K., Ryan, J.N., Kendall, C., Jarrett, R.D., 2000. Determination of hydrologic pathways during snowmelt for alpine/subalpine basins, Rocky Mountain National Park. *Colorado. Water Resour. Res.* 36, 63–75. <https://doi.org/10.1029/1999WR900296>.
- Tetzlaff, D., Malcolm, I.A., Soulsby, C., 2007a. Influence of forestry, environmental change and climatic variability on the hydrology, hydrochemistry and residence times of upland catchments. *J. Hydrol.* 346, 93–111. <https://doi.org/10.1016/j.jhydrol.2007.08.016>.
- Tetzlaff, D., Soulsby, C., Waldron, S., Malcolm, I.A., Bacon, P.J., Dunn, S.M., Lilly, A., Youngson, A.F., 2007b. Conceptualization of runoff processes using a geographical information system and tracers in a nested mesoscale catchment. *Hydrol. Process.* 21, 1289–1307. <https://doi.org/10.1002/hyp.6309>.
- Tweed Forum, 2019. *The Eddleston Water Project Information Leaflet. Tweed Forum, Old Melrose*.
- van Meerveld, H.J. (Ilja), Zhang, J., Tripoli, R., Bruijnzeel, L.A., 2019. Effects of reforestation of a degraded *Imperata* grassland on dominant flow pathways and streamflow responses in Leyte, the Philippines. *Water Resour. Res.* 55, 4128–4148. <https://doi.org/10.1029/2018WR023896>.
- Werritty, A., Ball, T., Spray, C., Bonell, M., Rouillard, J., Archer, N.A.L., 2010. *Restoration strategy: Eddleston Water Scoping Study. University of Dundee, Dundee*.
- Wilkinson, M.E., Quinn, P.F., Barber, N.J., Jonczyk, J., 2014. A framework for managing runoff and pollution in the rural landscape using a catchment systems engineering approach. *Sci. Total Environ.* 468–469, 1245–1254. <https://doi.org/10.1016/j.scitotenv.2013.07.055>.
- Wiskow, E., van der Ploeg, R.R., 2003. Calculation of drain spacings for optimal rainstorm flood control. *J. Hydrol.* 272, 163–174. [https://doi.org/10.1016/S0022-1694\(02\)00262-7](https://doi.org/10.1016/S0022-1694(02)00262-7).
- World Bank, 2018. *Nature-Based Solutions for Disaster Risk Management. World Bank, Washington D.C.*
- Zégre, N., Skaugset, A.E., Som, N.A., McDonnell, J.J., Ganio, L.M., 2010. In lieu of the paired catchment approach: hydrologic model change detection at the catchment scale. *Water Resour. Res.* 46 <https://doi.org/10.1029/2009WR008601>.
- Zuecco, G., Penna, D., Borga, M., Meerveld, H.J., 2016. A versatile index to characterize hysteresis between hydrological variables at the runoff event timescale. *Hydrol. Process.* 30, 1449–1466. <https://doi.org/10.1002/hyp.10681>.
- Zwartendijk, B.W., van Meerveld, H.J., Ghimire, C.P., Bruijnzeel, L.A., Ravelona, M., Jones, J.P.G., 2017. Rebuilding soil hydrological functioning after swidden agriculture in eastern Madagascar. *Agric. Ecosyst. Environ.* 239, 101–111. <https://doi.org/10.1016/j.agee.2017.01.002>.