



University of Pennsylvania  
**ScholarlyCommons**

---

Issue Briefs

Leonard Davis Institute of Health Economics

---

3-29-2021

## Public and Political Opinion on Medicaid

Jane M. Zhu


Sarah Gollust

Yuan-Chi Yang

Abeed Sarker

David Grande

Follow this and additional works at: [https://repository.upenn.edu/ldi\\_issuebriefs](https://repository.upenn.edu/ldi_issuebriefs)

 Part of the [Health Policy Commons](#), [Health Services Research Commons](#), and the [Public Policy Commons](#)

---

This paper is posted at ScholarlyCommons. [https://repository.upenn.edu/ldi\\_issuebriefs/151](https://repository.upenn.edu/ldi_issuebriefs/151)  
For more information, please contact [repository@pobox.upenn.edu](mailto:repository@pobox.upenn.edu).

---

## Public and Political Opinion on Medicaid

### Abstract

Medicaid has long been a political litmus test and a target for substantial programmatic changes. But what does the public feel about Medicaid, especially during a pandemic? In this study, the authors analyze more than one million Medicaid-related tweets from December 1, 2018 to September 30, 2020. They found a high volume of political posts on Twitter around Medicaid topics, peaking in January 2020 in the context of news about Medicaid expansion and the prior administration's Medicaid block grant proposal. As the pandemic hit, the number of Twitter posts about Medicaid and the pandemic increased, and the volume of political tweets on other Medicaid topics dropped. The posts themselves also appeared to be less polarized. These patterns suggest that when the public sees Medicaid operate as a safety net, the program is far less polarizing than partisan politics might indicate. Highlighting Medicaid's role during the pandemic could help strengthen public support for the program in non-crisis times and better position it to respond to future economic downturns.

### Keywords

medicaid, twitter, tweet, political

### Disciplines

Health Policy | Health Services Research | Public Policy

### Comments

### License



This work is licensed under a [Creative Commons Attribution-Non Commercial Works 4.0 License](https://creativecommons.org/licenses/by-nc/4.0/).

---

# PUBLIC AND POLITICAL OPINION ON MEDICAID

## A Twitter Analysis

Jane M. Zhu, MD, MPP, Sarah Gollust, PhD, Yuan-Chi Yang PhD, Abeed Sarker, PhD, and David Grande, MD, MPA

Medicaid has long been a political litmus test and a target for substantial programmatic changes. But what does the public feel about Medicaid, especially during a pandemic? In this study, the authors analyze more than one million Medicaid-related tweets from December 1, 2018 to September 30, 2020. They found a high volume of political posts on Twitter around Medicaid topics, peaking in January 2020 in the context of news about Medicaid expansion and the prior administration’s Medicaid block grant proposal. As the pandemic hit, the number of Twitter posts about Medicaid and the pandemic increased, and the volume of political tweets on other Medicaid topics dropped. The posts themselves also appeared to be less polarized. These patterns suggest that when the public sees Medicaid operate as a safety net, the program is far less polarizing than partisan politics might indicate. Highlighting Medicaid’s role during the pandemic could help strengthen public support for the program in non-crisis times and better position it to respond to future economic downturns.

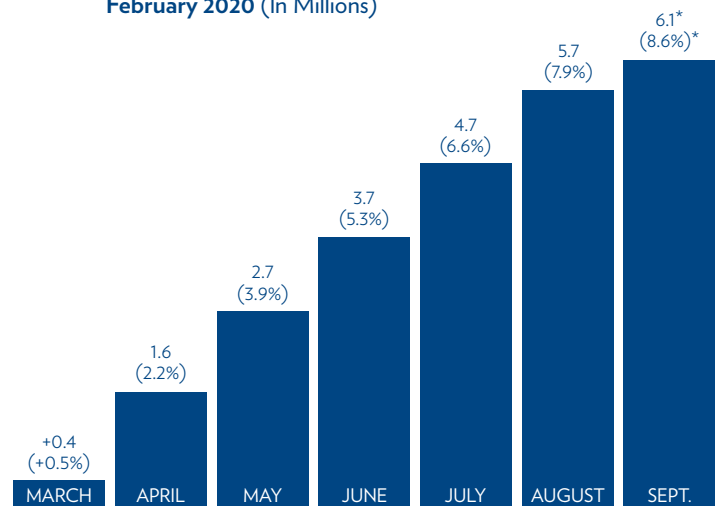
### INTRODUCTION

The Medicaid program, which provides coverage to about one in five Americans, has long been a political litmus test. Depending on the administration, as well as the underlying economy, the program has been targeted for substantial expansion, contraction, or transformation.

The program is countercyclical, in that enrollment (and government spending) increases during economic downturns. Medicaid acts as a social safety net for people when the economy worsens, and when rising unemployment puts many people into poverty. This aspect of Medicaid was on full display during the early phase of the COVID-19 pandemic: from February through September 2020, more than 6 million people were added to the Medicaid rolls (see Figure 1), reversing two years of enrollment declines.

Policy around Medicaid also tends to be countercyclical, in that policymakers often focus on shrinking the Medicaid rolls in times of economic growth, and bolster funding in economic hard times. Prior to the pandemic, the Trump administration signaled its willingness

**Figure 1. Cumulative Change in Medicaid/CHIP Enrollment from February 2020 (In Millions)**



**Source:** Analysis of Recent National Trends in Medicaid and CHIP Enrollment, Kaiser Family Foundation, 2021. Available at: <https://www.kff.org/coronavirus-covid-19/issue-brief/analysis-of-recent-national-trends-in-medicaid-and-chip-enrollment/>.  
\*September 2020 date are preliminary and subject to change.

to approve work requirements in Medicaid to reduce dependency on government programs. Twelve states received approval, although none of the requirements is currently in effect. After the pandemic emerged, policymakers sought to respond to the growing need by temporarily enhancing the federal Medicaid matching funds in the Families First Coronavirus Response Act (FFCRA). States could receive additional federal funds if they ensured continuous coverage for existing enrollees and maintained current eligibility criteria. During the pandemic, states have seen their Medicaid rolls grow anywhere from [4% to 18%](#).<sup>1</sup>

It is not clear whether public sentiment about Medicaid shifts along with these political and economic cycles. Polling shows strong support for Medicaid among the general public; in the [July 2019 KFF Health Tracking Poll](#),<sup>2</sup> three-fourths reported a favorable view of the program, while just one-fifth reported an unfavorable view. Most Democrats (85%), independents (76%), and Republicans (65%) viewed the program favorably. In a 2019 [study](#), more than two-thirds of adults in states that had not yet expanded Medicaid under the Affordable Care Act (ACA) favored expanding eligibility for the program.<sup>3</sup> This could explain successful ballot initiatives to expand Medicaid in six states: Maine in 2017, Idaho, Nebraska, and Utah in 2018, and Oklahoma and Missouri in 2020. Public sentiment is more divided and partisan when it comes to Medicaid work requirements: a recent [survey](#) found that public opinion is split relatively evenly about work requirements, with support higher among conservatives, those who see Medicaid as a short-term program, as well as among non-Hispanic whites who have high levels of racial resentment.<sup>4</sup>

These snapshots do not tell us how public sentiment changes in response to current events. From a practical standpoint, the program is continually undergoing policy and programmatic changes on a federal and state level. These broad changes make it increasingly important for policymakers and Medicaid stakeholders to understand how the public views the Medicaid program in the context of current events.

Social media provides opportunities for researchers and policymakers to better understand public sentiment, including changes over time. Twitter is an interactive social media platform used by about [20% of online adults](#),<sup>5</sup> allowing users to send 280-character messages to one another. The platform sees over 500 million tweets per day on topics including health-related experiences, behaviors, and concerns. While the “Twitterverse” is not representative of the general public, the demographics of Twitter use – significantly higher in young adults compared with older age groups – maps well to [Medicaid populations](#), 93% of whom are younger than age 65 and 80% of whom are under the age of 45.<sup>6</sup>

To assess changes in public sentiment about Medicaid, we conducted an exploratory analysis of more than one million Medicaid-related tweets from December 1, 2018 to September 30, 2020, allowing us to capture patterns before and during the pandemic.

## WHAT WE DID

We collected data using Twitter’s streaming interface, applying key search terms including *medicaid*, its common misspellings (e.g., *medicade* and *medicaide*), as well as branded Medicaid agency and managed care organization names (e.g., *Medi-cal*, California’s Medicaid program). Using a grounded theory approach, we categorized tweets into five broad categories:

- **Academic:** related to research, education, or scholarship about Medicaid, including tweets by persons or organizations with academic affiliations or think tanks that express the perspective from the affiliated organizations, and links to journal publications and reports.
- **Consumer Feedback:** related to consumers’ experiences or questions about Medicaid services, coverage, benefits, or health issues. The tweets are typically from Medicaid consumers or their family members, and can also include discussions with others.
- **Information/Outreach:** directed at consumers and Medicaid beneficiaries. Tweets convey information such as agency services, programs, events, enrollment, and eligibility criteria. Tweets containing information about general health or public health reminders are also included.
- **News:** news and announcements—including any tweets from a news agency or organization. Tweets that explicitly express political opinions and the tweets from Medicaid agencies or plans are excluded.
- **Political Opinion:** comments, personal opinions, political sentiment, advocacy related to Medicaid not belonging to other four categories.
- **Other:** tweets that are not relevant to Medicaid, typically “noise” that isn’t captured by the initial screening.

We developed a coding scheme by manually coding 800 tweets. Three coders independently coded the same tweets, and resolved disagreements and updated the coding guidelines via discussion. Two coders then reviewed a new set of 5,338 tweets, yielding substantial inter-coder agreement over 998 overlapping tweets.

We then coded tweets iteratively to develop supervised machine learning models. In total, 11,379 tweets were coded. The best performing model was then applied to a corpus consisting of 1,812,308 tweets, collected from December 2018 through September 2020, most of which were political opinion/advocacy (69%). This corpus was restricted to tweets that mentioned *medicaid* or its common misspellings explicitly. Duplicate posts and retweets were also removed.

Because of the predominance of political opinion tweets, and Medicaid’s longstanding status as a political lightning rod, we focused our analysis on these tweets. We applied natural language processing to remove tweets with very similar content and calculated

term frequencies for unigrams, bigrams, and trigrams—contiguous sequences of 1, 2, and 3 words—and identified the most frequent terms in each category. We also performed an analysis based on the frequency of terms or phrases for all tweets in one category, allowing us to distinguish content that is unique to that specific category, rather than those common to all tweets in the dataset. Finally, we analyzed specific high-volume topics, including work requirements, Medicaid expansion, mental health, and the pandemic. We used polarity scores to classify tweets as negative, neutral, or positive. The remainder of the brief focuses on results among the set of tweets labeled as “political opinion.”

## WHAT WE FOUND

The volume of political opinion tweets about Medicaid fluctuated from a nadir of approximately 15,000 tweets in December 2018 to nearly 185,000 tweets in January 2020, echoing the volume of tweets about Medicaid more generally (Figure 2). The high volume of Twitter chatter in January 2020 appears to be focused on a flurry of Medicaid-related news reports about the Trump administration’s [block grant proposal](#)<sup>7</sup> as well as Medicaid expansion efforts in specific states.

Table 1 shows a selection of political opinions related to specific topics pertaining to the Medicaid program, some of which advocate for specific political or policy stances, or which tag political figures or institutions.

In Figure 3, we look at temporal trends in the frequency of specific Medicaid-related topics. For example, there are slight spikes in discussions around work requirements and block grants in early 2019, as well as early 2020, likely corresponding to news about Medicaid work requirements (for example, Arkansas and Kentucky work requirements were struck down in federal court in March 2019 and upheld in court of appeals in February 2020). In comparison, a topic that is less dependent on news cycles—like mental health, for which Medicaid is a large payer of services—had a lower volume of chatter and less month-to-month fluctuation. In February 2020, as the COVID-19 pandemic spread in the U.S., tweets about coronavirus within the Medicaid context increased in volume.

In analyzing the sentiments expressed in the tweets, we find that Medicaid expansion is among topics that are more likely to be discussed in a positive light, with nearly 50% of tweets expressing positive sentiment and about 20% of tweets expressing negative sentiment (Figure 4). In comparison, the topic of work requirements appears to be more polarizing, with similar proportions of tweets reflecting positive and negative sentiments in public posts. After the start of the COVID-19 pandemic in the first quarter of 2020, there appeared to be a growing share of neutral valence tweets and a slight decrease in negative sentiments about Medicaid topics, suggesting that polarized viewpoints about Medicaid may have been lessened in the context of the pandemic.

Figure 2. Volume of Political Opinion Tweets Related to Medicaid, by Month

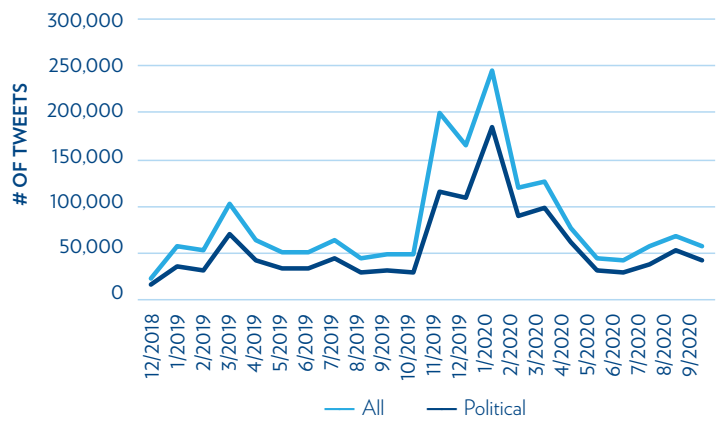


Figure 3. Volume of Medicaid-related Political Opinion Tweets on Selected Topics, by Month

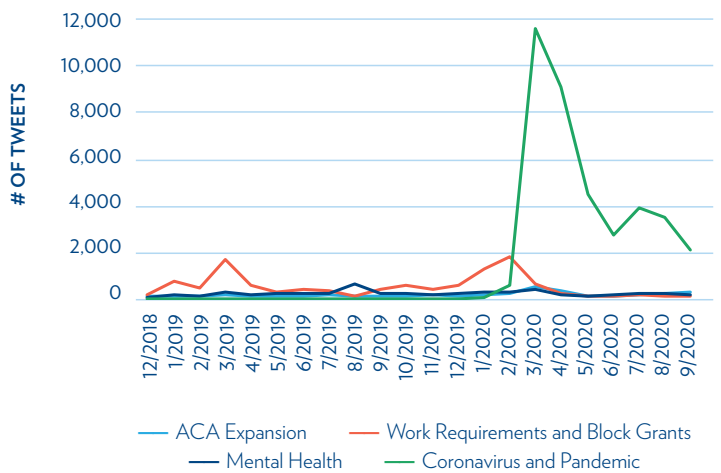


Figure 4. Positive vs. Negative Sentiments in Political Opinion Tweets on Selected Medicaid Topics

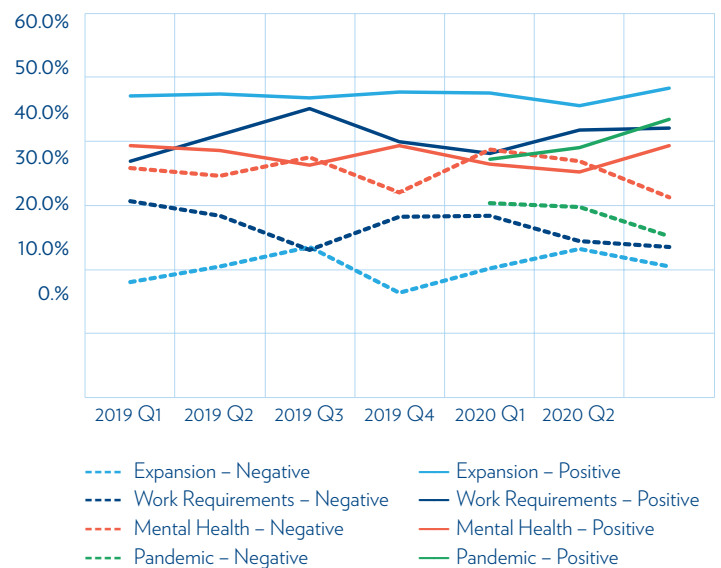


Table 1. Sample Political Opinion Tweets for Selected Topics

## MEDICAID EXPANSION



ACA/Medicaid expansion— The best thing that has happened to Arkansas and @GOP is in court trying to take it away 😡😡😡😡 #arleg @AsaHutchinson @RepFrenchHill @SenTomCotton @JohnBoozman

@cspanwj @RepTomReed ACA is Medicaid expansion. Medicaid is welfare, why do citizens want more people on welfare? The more people on Medicaid the less we working class people have. What is so hard to understand about this?

Easy to gut the system in the South as it had less guts to begin with. See Tennessee's ten-year refusal to expand Medicaid through ACA leaving several counties without hospitals.

Enough said. They were warned that this would happen. Red States that refused to expand Medicaid under the ACA are seeing their rural hospitals close down #Topbuzz <https://t.co/aWaF7JKcCD>

Just days ago @GregForMontana said he was against cutting "vital programs like...Medicaid expansion." Now he admits that he supports dismantling the ACA. Without the ACA there is no Medicaid expansion; pretending otherwise is lying to Montanans. #MTGov <https://t.co/8d6GR0HYjy>

## WORK REQUIREMENTS, BLOCK GRANTS



@realDonaldTrump America now know you LIED. Medicaid Block grants will decrease the care provided to MILLIONS. #scam

@thehill If you are able bodied, you should have a work requirement. "There are more than \$150 billion in cuts from implementing Medicaid work requirements."

I have been able to support myself with family help since Medicaid expanded because I was able to maintain my health. I couldn't always meet the 20 hour work requirement. Food stamps do the same thing for people like me. Republicans don't care.

@LeftySr @Swhoney @AlecMacGillis Absolutely beneficial. Indiana expanded their Medicaid as well, but also has a work requirement. The amount of paperwork generated every month is ridiculous since 'Gateway to Work' began. Trump would rather see \$ wasted on Bureaucracy than go to people who need services. 🗳️👩🏻 <https://t.co/LO5dMxlZmo>

@realDonaldTrump is actually doing very well with his promises. Trump need to address; Ending Sanctuary Cities, Block-grant Medicaid to the states to lower premium rates and, Enact term limits to clean up the swamp. <https://t.co/gxqwzMqUxR>

## MENTAL HEALTH



I'd be able to make a living WHILE getting the necessary mental health care I need to survive AND never have to worry about losing my Medicaid and winding up homeless on the streets in a mental health crisis for the rest of my life.

Either you support this or you want us to die.

This is absolutely correct. And if you're serious about providing actual relief for those enduring untreated mental health issues, expand Medicaid.

@JoanAlker1 @Prof\_HeidiAllen Absolutely heartbreaking.. so much for #MentalHealthAwareness .. especially those with #addiction & #mentalhealth rely on #Medicaid. If the lawmakers needed Medicaid personally perhaps they'd understand.

@reschafer @Vozable @CAPAction @ewarren This is absolutely shocking, as is leaving out dental. I was a case manager at mental health, and people in schizophrenic crisis were waiting 6 weeks for an appointment with the only psychiatrist who took Medicaid in a metro area of 100,000.

ACTION ALERT! Reach out to your Senators NOW (before their noon vote) and urge them to protect Medicaid-funded mental health nonprofits, and more. Link here: <https://t.co/jDc3jkBg5h> <https://t.co/m2tnJ7WsBt>

## CORONAVIRUS AND/OR PANDEMIC



SB 808 would cause unnecessary disruptions to our state's Medicaid system, which would jeopardize the lives and wellbeing of over two million children and families with low incomes, in the midst of an unprecedented pandemic. VOTE NO! #CloseTheGapNC <https://t.co/h8iRnJ8Wz2> <https://t.co/OceHql2hLI>

@elizabethcrisp 1 -could be blood type. Type O not as affected. 2- what if Medicaid hospitals are rubber stamping anything respiratory or not directly caused by #COVID19? If these failing hospitals code it as #coronavirus they are assured they will get bill paid.

This is the absolute worst time to cut Medicaid, in the middle of a pandemic. I can't believe this is even a possibility. What kind of dystopian hell are we living in? Damn. #ProtectMedicaid #NoMedicaidCuts #Covid\_19

@RepMarkGreen @TheWarriorsJrny What are you doing to actually help the people you're supposed to represent as we're battling COVID19, school closures bc of COVID19, hospital closures bc of your refusal to expand Medicaid that will make COVID19 worse for rural folks and the hospitals who will get their patients?

## CONCLUSION

In this exploratory analysis, we found a high volume of political posts on Twitter around Medicaid topics, peaking in January 2020 in the context of news about Medicaid expansion and the prior administration's unveiling of a Medicaid block grant plan. As the COVID-19 pandemic hit the U.S., Twitter posts increased in volume about Medicaid and the pandemic, and the volume of political tweets

on other Medicaid-related topics dropped. The posts themselves also appeared to be less polarized, with more posts of a neutral valence and fewer with strongly positive or negative sentiments.

These patterns suggest that when the public sees Medicaid operate in its core function as a safety net, the program is far less polarizing than



partisan politics might indicate. Highlighting Medicaid's role during the pandemic could help strengthen public support for the program in non-crisis times and better position it to respond to future economic downturns.

There are a number of limitations in this exploratory study, including the possibility that Twitter posts could be miscategorized using a machine learning algorithm. Moreover, sentiment analysis may not capture the specific context of particular posts, including irony, sarcasm, and hyperbole.

However, our analysis shows that Twitter — and social media more generally — is a potential source of data to supplement or complement public polling data and anecdotal evidence on the public's views towards a heavily politicized program like Medicaid. Public perception of the program is important and evolving. Public views can have a strong effect in driving or supporting programmatic changes, as demonstrated by an increase in voter-approved ballot initiatives for Medicaid expansion in multiple states. One [study](#) found that Americans connected to the program were more likely to view Medicaid as important and to support increases in spending (even controlling for partisanship).<sup>8</sup> Social media has been used to mine opinions for commercial and market purposes; to amplify and disseminate public health messaging; and to conduct public health surveillance and research. Social media environments, where people are able to make connections and publicly express their views, could also be used to help destigmatize Medicaid, increase awareness, and facilitate direct advocacy for programmatic and policy change.

Because Medicaid is a state-based program, further research is needed to understand the relationship between public opinion, as expressed on social media, and its impact on Medicaid stakeholders, political leaders, and specific program or policy changes. A promising approach would be to identify geographic locations of Twitter users and link public opinion and framing with state-specific policy discussions. This more granular exploration would provide greater insight into the nature of positive and negative sentiments around issues like work requirements and how public views vary by state or in response to state-based policy changes.

## REFERENCES

1. Corallo, B. & Rudowitz, R. (2021). Analysis of Recent National Trends in Medicaid and CHIP Enrollment. Kaiser Family Foundation. Retrieved from <https://www.kff.org/coronavirus-covid-19/issue-brief/analysis-of-recent-national-trends-in-medicaid-and-chip-enrollment/>
2. Kirzinger, A., Muñana, C., & Brodie, M. (2019). KFF Health Tracking Poll - July 2019: The Future of the ACA and Possible Changes to the Current System, Preview of Priorities Heading Into 2nd Democratic Debate. Kaiser Family Foundation. Retrieved from <https://www.kff.org/health-reform/poll-finding/kff-health-tracking-poll-july-2019/>
3. Collins, S.R., Gunja, M.Z. (2019). What Do Americans Think About Their Health Coverage Ahead of the 2020 Election? The Commonwealth Fund. Retrieved from <https://www.commonwealthfund.org/publications/issue-briefs/2019/sep/what-do-americans-think-health-coverage-2020-election>
4. Haeder, S.F., Sylvester, S., & Callaghan, T. (2020). Lingerin Legacies: Public Attitudes about Medicaid Beneficiaries and Work Requirements. *Journal of Health Politics, Policy and Law*. doi: <https://doi.org/10.1215/03616878-8802198>
5. Perrin, A. & Anderson, M. (2019). Share of U.S. Adults Using Social Media, Including Facebook, is Mostly Unchanged Since 2018. Pew Research Center. Retrieved from <https://www.pewresearch.org/fact-tank/2019/04/10/share-of-u-s-adults-using-social-media-including-facebook-is-mostly-unchanged-since-2018/>
6. The Centers for Medicare & Medicaid Services. (2020). Medicaid and CHIP Beneficiaries at a Glance. Retrieved from <https://www.medicaid.gov/medicaid/quality-of-care/downloads/beneficiary-atagance.pdf>
7. Goodnough, A. (2020). Trump Administration Unveils a Major Shift in Medicaid. *New York Times*. Retrieved from <https://www.nytimes.com/2020/01/30/health/medicaid-block-grant-trump.html>
8. Grogan, C.M., Park, S. (2017). The Politics of Medicaid: Most Americans Are Connected to the Program, Support Its Expansion, and Do Not View It as Stigmatizing. *The Milbank Quarterly*, 95(4), 749-782. doi: 10.1111/1468-0009.12298

## ABOUT LDI

Since 1967, the University of Pennsylvania's Leonard Davis Institute of Health Economics (Penn LDI) has been the leading university institute dedicated to data-driven, policy-focused research that improves our nation's health and health care. Penn LDI's priority areas include (1) health care access and coverage; (2) health equity; (3) improving care for older adults; (4) opioid epidemic; and (5) population health. Penn LDI connects all twelve of Penn's schools, the University of Pennsylvania Health System, and the Children's Hospital of Philadelphia through its more than 300 Senior Fellows.

Learn more at [ldi.upenn.edu](http://ldi.upenn.edu).

 @PennLDI

## AUTHORS

**Jane M. Zhu**, MD, MPP,  
LDI Adjunct Senior Fellow,  
Oregon Health and Science University

**Sarah Gollust**, PhD,  
University of Minnesota

**Yuan-Chi Yang**, PhD,  
Emory University

**Abeed Sarker**, PhD,  
Emory University

**David Grande**, MD, MPA,  
LDI Senior Fellow,  
University of Pennsylvania

## ACKNOWLEDGEMENT

This work was funded by the Robert Wood Johnson Foundation, grant #76242. Additional research funded by this grant can be found at <https://onlinelibrary.wiley.com/doi/full/10.1111/1468-0009.12492> and <https://www.jmir.org/2020/8/e18401/>