

May 2021

Native Gardens in Southern California - 2018

Follow this and additional works at: <https://digitalcommons.lmu.edu/urbanecolab-module10>

Repository Citation

"Native Gardens in Southern California - 2018" (2021). *Module 10: Garden Ecology*. 38.
<https://digitalcommons.lmu.edu/urbanecolab-module10/38>

This Presentations is brought to you for free and open access by the Urban EcoLab at Digital Commons @ Loyola Marymount University and Loyola Law School. It has been accepted for inclusion in Module 10: Garden Ecology by an authorized administrator of Digital Commons@Loyola Marymount University and Loyola Law School. For more information, please contact digitalcommons@lmu.edu.

What California once looked like, and could again!



WHY GO NATIVE?

- Native plant species are needed for insects and animals to flourish.
- Exotic ornamentals out-compete native plants, many creatures starve to death because they did not evolve with the exotics and simply cannot eat them. Resist buying them. If you have the opportunity to change something in your garden, and you have a choice between non-native and native plants – ***go native!***
- As Douglas Tallamy is quoted as saying, “You don’t have to cut down the lilacs, but they are doing nothing for the insects and birds. It’s as if they were plastic. They’re not hurting anything, except that they’re taking space away from something that could be productive.”

Excerpt from The New York Times, IN THE GARDEN Section, March 6, 2008, “To Feed the Birds, First Feed the Bugs” article By ANNE RAVER, profiling Douglas Tallamy and his book BRINGING NATURE HOME

Garden Mentors



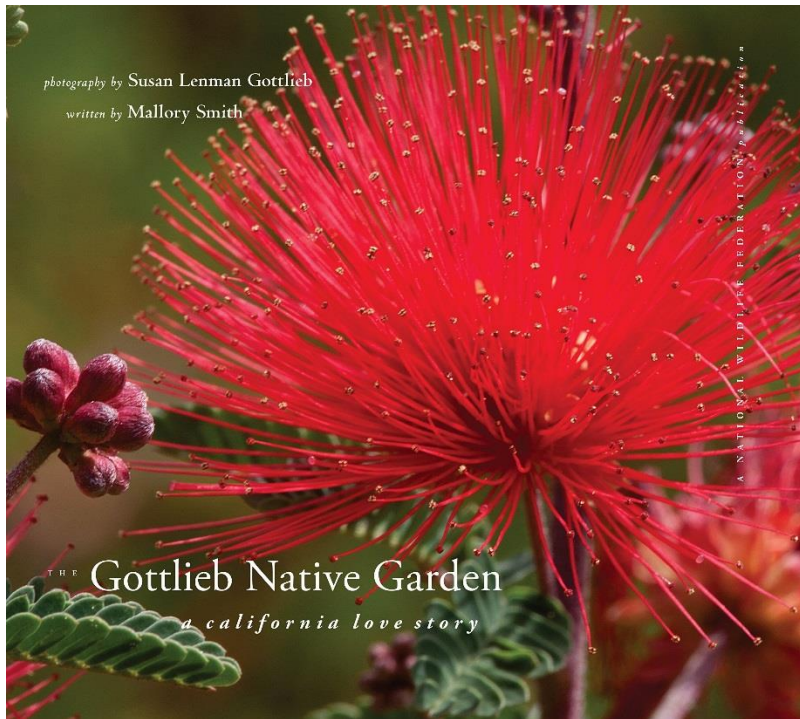
Renowned around the country and revered within the Los Angeles environmental community, the Gottlieb Native Garden is a National Wildlife Federation-certified Backyard Wildlife Habitat. It is brimming with nature yet located less than a mile from the busy streets of Beverly Hills. Susan Gottlieb, the dedicated environmentalist who created the garden believes we could save the world if we all understood the power of native plants.

The Gottlieb Native Garden: <http://thegottliebnativegarden.com/>

Garden Mentors

This book is her story, as well as a larger one: the story of how to restore natural habitat and protect biodiversity with simple, individual actions.

It provides an example of what every one of us can accomplish by prioritizing nature.



The Gottlieb Native Garden: A California Love Story captures the essence of this stunning space and reveals the fundamental importance of Susan Gottlieb's mission to **restore native plants all over southern California.**

"If you have a backyard, this book is for you."
—Richard Louv, author of *Last Child in the Woods*

Bringing Nature Home

UPDATED AND EXPANDED

How You Can
Sustain Wildlife
with Native Plants

Douglas W. Tallamy

With a Foreword by Rick Darke

Why We Need Biodiversity

Here is why every one of us should feel threatened. Here is why it matters. Losses to biodiversity are a clear sign that our own life-support systems are failing. The ecosystems that support us - that determine the carrying capacity of our Earth and our local spaces - are run by biodiversity. It is biodiversity that generates oxygen and clean water, creates topsoil out of rock, buffers extreme weather events like droughts and floods, pollinates our crops, and recycles the mountains of garbage we create every day.

Humans cannot live as the only species on this planet because it is other species that create the ecosystem services essential to our survival. Every time we force a species to extinction we promote our own demise.

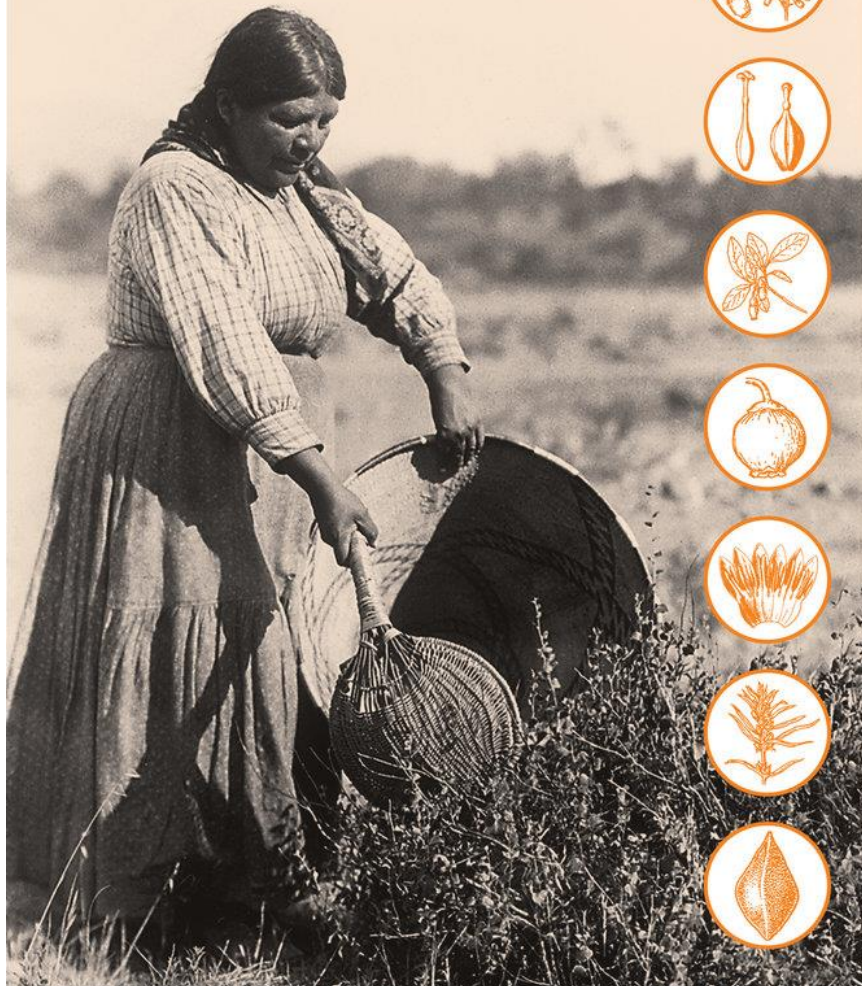
Biodiversity is not optional.

Excerpts from article reprinted from the
Wild Ones Journal Vol. 22, No. 2.

M. KAT ANDERSON

TENDING THE WILD

NATIVE AMERICAN KNOWLEDGE
AND THE MANAGEMENT OF
CALIFORNIA'S NATURAL RESOURCES



Native Americans got it.

They knew the value in managing their natural resources.

For them it was immediately obvious that their survival depended upon how they managed their environment.

It's not so obvious to us in these modern times - with food growing, processing and management so far removed from our daily lives – but it's just as important.

Edible Native Plant Controversy

Excerpt from Sustainable Living: Foraging for Native Plant Foods in Your Own Backyard Blog article:

Native plants play an important role in living sustainably. They furnish habitat, create shade, improve the soil and provide edible and craft materials. To put it simply, California natives are remarkable additions to the garden ecosystem. But it's important to remember that these plants are also critical components of natural ecosystems.

The increased interest in edible and medicinal native plants creates several unintended consequences. Most important is the overuse of natural stands of native plants growing in the wild. This is not just a problem in California; over-collecting of native plants is a critical issue world-wide, leading to the extinction of entire plant species.

While some California native plants are still common, others are rare – even endangered - in the wild. Humans have played a key role, primarily by destroying habitat (building houses, roads, etc.). Global climate change is putting further pressures on wild plants and animal populations.

<http://mother-natures-backyard.blogspot.com/2016/06/sustainable-living-foraging-for-native.html>

Two articles to read:

- Lisa Novick, Director of Outreach and K-12 Education, Theodore Payne Foundation for Wild Flowers & Native Plants:
http://www.huffingtonpost.com/lisa-novick/forage-in-the-garden-not_b_10211746.html
- Dr. Connie Vadheim, Adjunct Professor, Cal State Dominguez Hills, Biology Department
<http://mother-natures-backyard.blogspot.com/2016/06/sustainable-living-foraging-for-native.html>

Medicinal Native Plants

Local Resources:

- Ojai: Herb Walks with Lanny Kaufer <https://herbwalks.com/>
- Santa Barbara: EthnoHerbalist with Dr. Kevin Curran <http://www.ethnoherbalist.com/>

Southern California ethnobotany: traditional use of native plants author: Dr. Kevin Curran updated: 4-17-2017
Southern California is home to a diverse collection of native plants. These plants have successfully adapted to the mostly dry and warm climate of the region. Certain southern California native plants evolved to survive in the extreme heat of the Sonoran Desert while others enjoy the cool, sea breeze of the Coastal Sage Scrub plant community. On this page, we provide a clickable list of native California plants that have been useful in some way to the early settlers of southern California. This page is updated every year, so please email us to share additional plant usage information.

Humans have occupied southern California for about 12,000 years. During this time, people have relied on local plants for food, tools, medicine, shelter and clothing. As you read more about each native plant, you'll understand the way early Native Americans relied on these plants for their survival.

Excerpt taken from: <http://www.ethnoherbalist.com/southern-california-native-plants-medicinal/>

Books to read:

1. Healing with Medicinal Plants of the West, by James D. Adams, Jr. - Associate Professor of Pharmacology at USC, and Cecilia Garcia- Chumash Indian Healer
2. "Temalpakh: Cahuilla Indian knowledge and usage of plants", by Lowell Bean and Katherine Siva Saubel
3. "Chumash Ethnobotany: Plant Knowledge Among the Chumash People of Southern California", by Jan Timbrook
4. "The Drought Defying California Garden", by Greg Rubin and Lucy Warren

Garden Mentors



Dr. Connie Vadheim,
Adjunct Biology Professor and Botanist
CSUN Dominguez Hills

Gardena Willows: <http://mother-natures-backyard.blogspot.com/p/about-mother-natures-backyard.html>

Madrona Marsh Nature Center (Torrance)

3201 Plaza del Amo, Torrance, CA 90503
(310) 782-3989

<http://www.friendsofmadronamarsh.com/>

Free classes taught by Connie Vadheim and Tracy Drake

1. “Out of the Wilds and Into Your Garden” Series
2. “One Pot at a Time” Project
3. Ongoing Classes and Workshops



Garden Mentors

The Theodore Payne Foundation for Wild Flowers and Native Plants is a 501(c)3 nonprofit organization dedicated to the understanding, preservation and use of California Native Wild Flowers and Plants.

The Foundation preserves the legacy and carries on the work of Theodore Payne, a pioneering Los Angeles nurseryman, horticulturist and conservationist widely considered to be the father of the native plant movement in California.



Theodore Payne <http://theodorepayne.org/about/theodore-payne/>

Theodore Payne Foundation (Sun Valley)

10459 Tuxford Street
Sun Valley, California 91352
818-768-1802

<http://theodorepayne.org/>



Garden Resources On-line

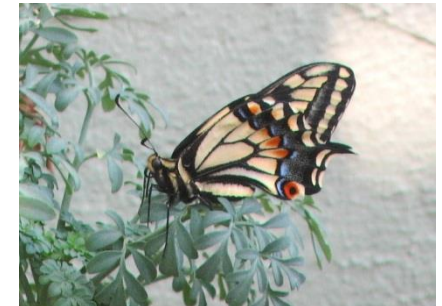
How to register your garden as a **Wildlife Habitat Yard**

- 1) Audubon At Home <http://audubonathome.org/>
- 2) National Wildlife Federation
<http://www.nwf.org/gardenforwildlife/create.cfm?CFID=7177856&CFTOKEN=176461acda590e96-4839F373-5056-A868-A0F00601F3124B08>
- 3) Monarch Waystation Program
<http://www.monarchwatch.org/waystations/certify.html>
- 4) Xerces Society <http://www.xerces.org/bringbackthepollinators/>

**POLLINATOR
PARTNERSHIP**

Protect their lives. Preserve ours.

The Pollinator Partnership is a non-profit 501(c)3 organization and the largest in the world dedicated exclusively to the protection and promotion of pollinators and their ecosystems.
•Go to this website for more resources on pollinators: <http://www.pollinator.org/>



Why do this?

- Your garden will come alive
- You'll teach your students
- You'll love your garden!





BACKYARD WILDLIFE HABITAT™

NATIONAL WILDLIFE FEDERATION®

This property provides the four basic habitat elements needed for wildlife to thrive: food, water, cover, and places to raise young. It has been certified by the National Wildlife Federation as an official Backyard Wildlife Habitat site.



NATIONAL
WILDLIFE
FEDERATION®

www.nwf.org™

People and Nature: Our Future Is in the Balance™
NATIONAL WILDLIFE FEDERATION

11100 Wildlife Center Drive • Reston, VA 20190-5362

It's Simple

4 basic habitat elements
needed for wildlife to thrive:

1. Food
2. Water
3. Cover
4. Places to raise young

No Need to Re-invent the Wheel

The next 9 slides were taken from a presentation made by one of my mentors, Dr. Connie Vadheim, as part of a native plant restoration certificate class called Introduction to Environmental Restoration, offered at the Madrona Marsh Preserve and Nature Center.



Thank you Connie!

Connie started the Project SOUND (Save Our Unique Natural Diversity) initiative which is now known as the Gallery of CA Native Plants, available on the Cal State Dominguez Hills (CSUDH) Website:

http://nativeplantscsudh.blogspot.com/p/gallery-of-native-plants_17.html

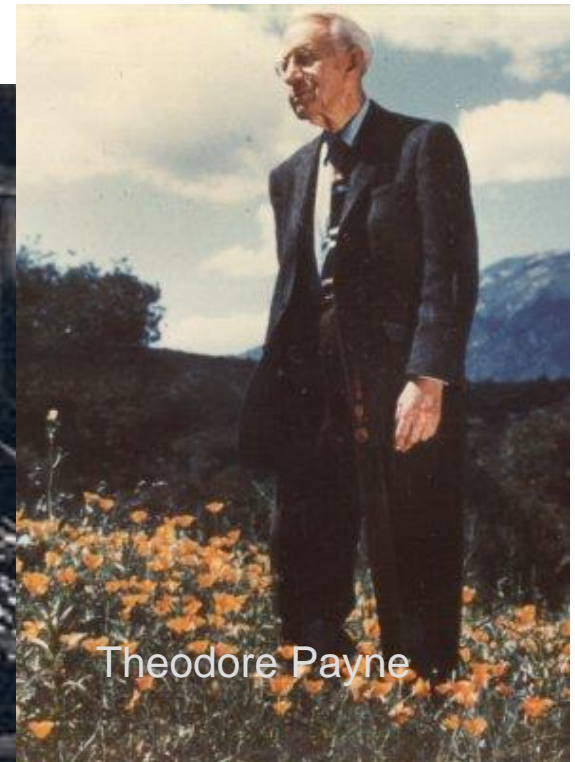
A bit of history: the 'Old California Garden'

<http://catalog1.lapl.org/cgi-bin/cw.cgi?fullRecord+5905+968+22179+20+0>



<http://catalog1.lapl.org/cgi-bin/cw.cgi?fullRecord+5905+968+22179+20+0>

Curiously enough, the best landscape designers of the 20th Century did use native plants

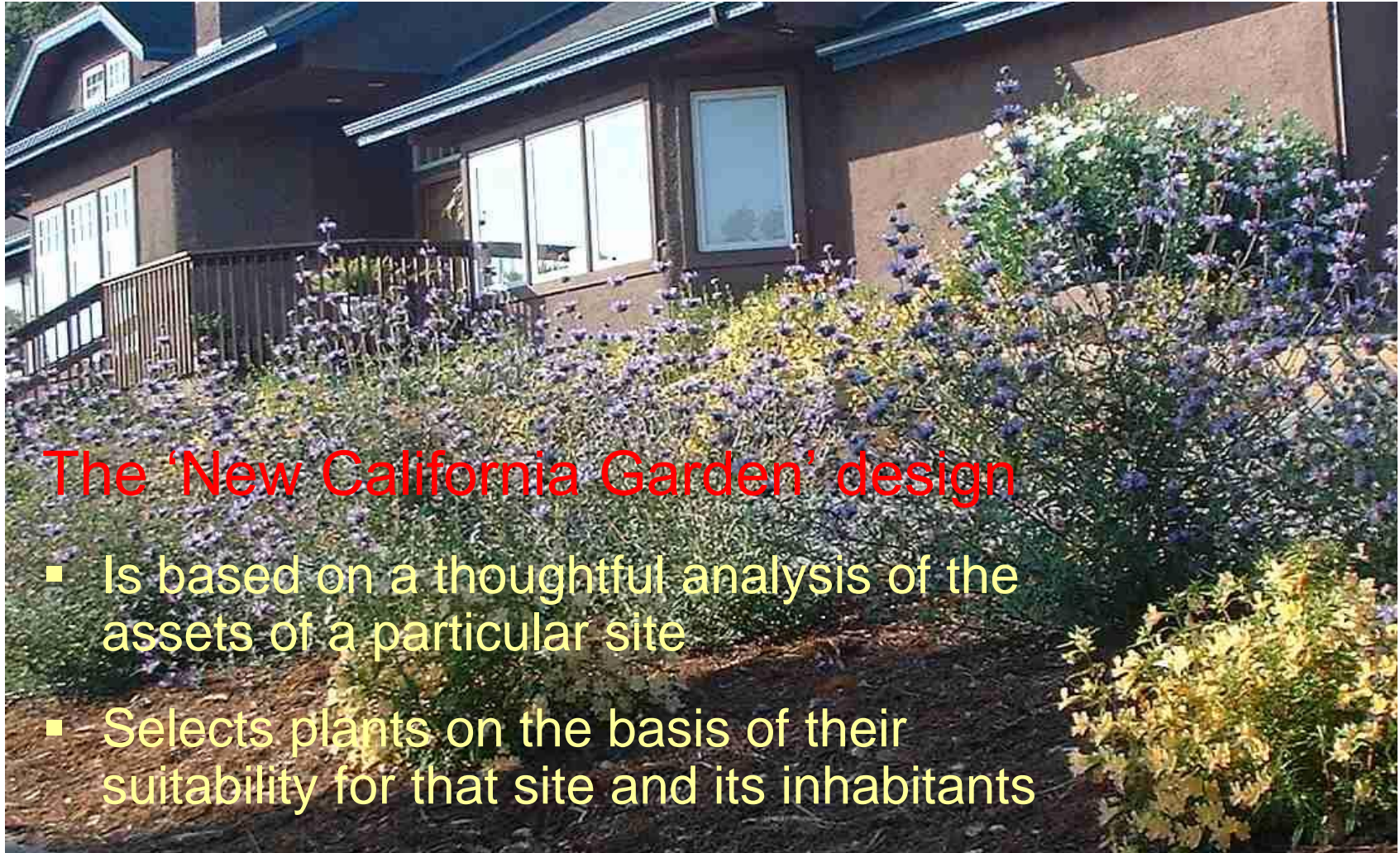


But most home gardeners of the 20th century created 'Old California Gardens'



The 'Old California Garden' is based on the premise that you can grow just about anything in S. California, given enough water, soil amendments and fertilizer

We need a paradigm shift for our gardens



The 'New California Garden' design

- Is based on a thoughtful analysis of the assets of a particular site
- Selects plants on the basis of their suitability for that site and its inhabitants

The 'New California Garden' is all about making informed choices



- About how to spend your (scarce) resources
 - Sun/shade
 - Water
 - Time
 - Space
- About your values as they relate to your site
- About your history and traditions
- About your site's natural history
- About your connections to the land

Characteristics of the 'New California Garden'

- ❑ Is water-wise:
 - ❑ Makes good use of seasonal rains
 - ❑ Recycles water into the aquifer
 - ❑ Makes use of garden Water Zones
- ❑ Low use of fertilizers & pesticides
- ❑ Appropriate level of maintenance (based on needs/desires)
- ❑ Attractive to the eye
- ❑ Good habitat for native plant and animal species
- ❑ Reflects our S. California natural heritage
- ❑ Reflects our family's history, values and desires
- ❑ Is a 'magnet' for outdoor activities - gets us out into our yards

The Landscaping Planning Process

1. Create a Base Map (Base Plan)
2. Conduct a physical assessment of the site
3. Discover the history of your site
4. Determine your gardening style(s)
5. Do a needs assessment to determine landscape functions
6. Map functional areas
7. Develop functional areas
8. Develop final (current) Landscape Plan, including plant list
9. Walk your garden on a regular basis
10. Assess and monitor your garden periodically
11. Update lists of plants, birds, insects, and other wildlife
12. Gardens are living, dynamic ecosystems. Expect change!

* Lisa's additions 9-12 in RED

The easiest way to create a 'New California Garden' is to include more native plants



Madrona Marsh Native Plant Garden around Building

Use locally native plants if you live near 'sensitive' natural habitat



<http://www.middlebrook-gardens.com/leiner-meadow-created-blend-surrounding-landscape-0>

- Not only does this make sense environmentally, it also turns 'the whole outdoors' into your yard

Native vs. Non-native Plants

NATIVE SPECIES

Native species are plants, animals, or other organisms that have historically occurred and evolved in ecosystems.

NON-NATIVE SPECIES

Non-native species have been either intentionally or accidentally introduced to by humans or their activities. Non-native species do not cause environmental or economic harm.

An important, not-to-be-missed distinction between non-native species and invasive species is that non-native species do not disrupt the natural functions and processes of our native ecosystems.

INVASIVE SPECIES

Invasive species are non-native plants, animals, or other organisms that did not historically occur in an area. When introduced to ecosystems, they develop abundant, widespread populations that negatively impact the environment, the economy, human health, or the way we live.

<http://vitalsignsme.org/what-invasive-species>

Ecosystem services:

Services provided to people by healthy functioning ecosystems

- **Air quality**

- Trees: filtering pollutants.
- Oxygen production.

- **Water quality**

- Hydrological cycle.

- **Climate regulation**

- Carbon-storage.

- **Healthy soils**

- **Habitat and biodiversity**

- **Other services.**



Rio Los Angeles Park

*(Sustainable Sites Initiative, 2009; De Groot et al., 2002)

Example: Washingtonian Palm Trees

- 1) California Washingtonia Palm.
(*Washingtonia filifera*). Native to the far southwestern United States and Baja California.
- 2) Mexican Fan Palm.
(*Washingtonia robusta*). Native to western Sonora, and Baja California Sur in northwestern Mexico. It is reportedly naturalized in Florida, California, Hawaii, parts of the Canary Islands, Italy, Spain, and Réunion.

The two *Washingtonia* species hybridize freely, making identification difficult.

<https://en.wikipedia.org/wiki/Washingtonia>



Washingtonia robusta (left)
Washingtonia filifera (right)

Used by many bird species for nesting, sometimes in the same tree at the same time:

- 1) Red-tailed Hawk
- 2) Barn Owl
- 3) Cassin's Kingbird
- 4) Hooded Oriole

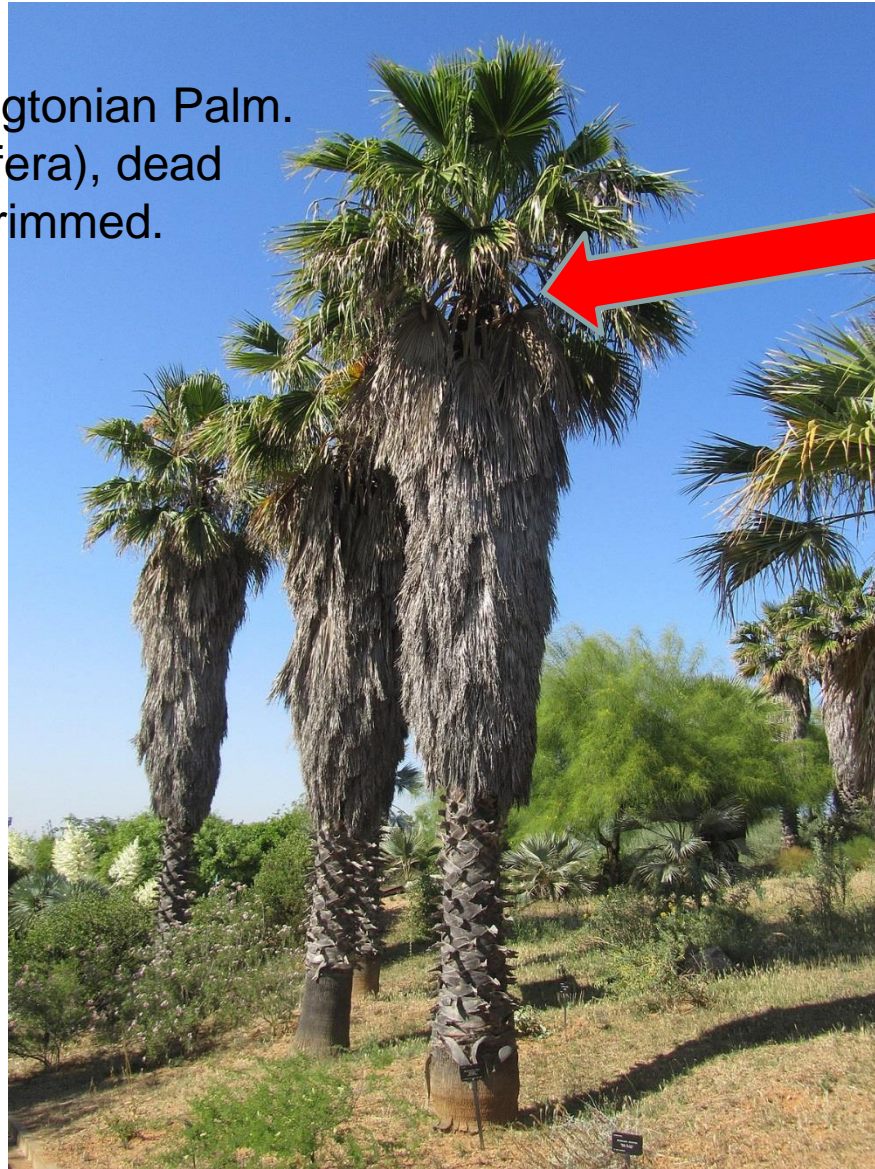
<http://idtools.org/id/palms/palmid/factsheet.php?name=Washingtonia+robusta>

California Washingtonian Palm.
(*Washingtonia filifera*), dead
leaf fronds NOT trimmed.



https://en.wikipedia.org/wiki/Washingtonia#/media/File:Jardi_botanic_de_barcelona_washingtonia_filifera.jpg

California Washingtonian Palm.
(*Washingtonia filifera*), dead
leaf fronds NOT trimmed.



Red-tailed Hawk



Photo: Tom Vezo/Vireo

https://en.wikipedia.org/wiki/Washingtonia#/media/File:Jardi_botanic_de_barcelona_washingtonia_filifera.jpg

California Washingtonian Palm.
(*Washingtonia filifera*), dead
leaf fronds NOT trimmed.

Barn Owl



By Peter Trimming from
Croydon, England -
'Tutoke' Uploaded by
snowmanradio, CC BY 2.0,
<https://commons.wikimedia.org/w/index.php?curid=15975742>



Red-tailed Hawk



Photo: Tom Vezo/Vireo

https://en.wikipedia.org/wiki/Washingtonia#/media/File:Jardi_botanic_de_barcelona_washingtonia_filifera.jpg

California Washingtonian Palm.
(Washingtonia filifera), dead
leaf fronds NOT trimmed.

Barn Owl



By Peter Trimming from
Croydon, England -
'Tutoke' Uploaded by
snowmanradio, CC BY 2.0,
[https://commons.wikimedia.
org/w/index.php?curid=159
75742](https://commons.wikimedia.org/w/index.php?curid=15975742)



Red-tailed Hawk



Photo: Tom Vezo/Vireo

Female Hooded Oriole

Photo by Randy Mehoves
female-hooded-oriole-
d2n1951-female-
hooded_d2n1951.jpg

Male Hooded Oriole

Photo by Tom Grey
[http://birdweb.org/birdweb/
bird/hooded_oriole](http://birdweb.org/birdweb/bird/hooded_oriole)

https://en.wikipedia.org/wiki/Washingtonia#/media/File:Jardi_botanic_de_barcelona_washingtonia_filifera.jpg

California Washingtonian Palm.
(Washingtonia filifera), dead
leaf fronds NOT trimmed.

Barn Owl



By Peter Trimming from
Croydon, England -
'Tutoke'Uploaded by
snowmanradio, CC BY 2.0,
<https://commons.wikimedia.org/w/index.php?curid=15975742>



Red-tailed Hawk



Photo: Tom Vezo/Vireo

Female Hooded Oriole

Photo by Randy Mehoves
female-hooded-oriole-
d2n1951-female-
hooded_d2n1951.jpg

Male Hooded Oriole

Photo by Tom Grey
http://birdweb.org/birdweb/bird/hooded_oriole

Cassin's Kingbird

Photo by Tom Grey
<http://tgreybirds.com/Pages/CassinsKingbirdp.html>

https://en.wikipedia.org/wiki/Washingtonia#/media/File:Jardi_botanic_de_barcelona_washingtonia_filifera.jpg

Preparing for a Pollinator Garden
With help from LMU Facilities
Spring 2013





Before



After



Students from PVES
come to participate with
guidance from LMU/CURes
And FBW Staff



Hands-on Restoration by Playa Vista Elementary School Students







Ballona Discovery Park
Pollinator Garden Spring 2013
Adopted by Playa Vista Elementary School



May 2013

THE FISH AND THE PEOPLE:
Wetlands are a natural part of our landscape. They provide a natural habitat for many species of fish and wildlife. They also provide a natural barrier against flooding and provide water during times of drought.

THE CYCLE OF LIFE
at the Salton Wetlands

WHY ARE THE WETLANDS IMPORTANT?

Wetlands
Wetlands act as natural sponges, storing water and slowly releasing it back into the system. They also store and purify water during times of drought.

Protection
Wetlands create a buffer zone along the coast, protecting our communities from storm surge surges.

Education
Wetlands improve water quality by filtering out pollutants.

Open
Wetlands create the perfect habitat for all kinds of wildlife. From fish and birds to mammals and reptiles, wetlands are a rich source of biodiversity. Wetlands also provide a natural barrier against flooding and provide water during times of drought.

SOUTHERN CALIFORNIA WETLANDS

Wetlands are the life of our watershed. Today, 80% of the coastal wetlands and 90% of the inland wetlands have been lost. Wetlands are a natural barrier against flooding and provide water during times of drought.

Wetlands are a natural barrier against flooding and provide water during times of drought.

Q: What can I see in the Wetlands?

Wetlands are a natural barrier against flooding and provide water during times of drought.

Sustainable Native Pollinator Garden Attracting birds and Beneficial Insects





The Positive Affects of Soil, Plantsand Gardening in general on the human body

- <https://www.gardeningknowhow.com/garden-how-to/soil-fertilizers/antidepressant-microbes-soil.htm>
- <http://permaculture.com.au/why-gardening-makes-you-happy-and-cures-depression/>
- <https://www.thrive.org.uk/gardening-can-help-you-feel-better.aspx>
- <https://www.rodalorganiclife.com/garden/10-plants-you-need-to-grow-if-youre-suffering-from-depression-stress-or-anxiety>
- <https://www.psychologytoday.com/blog/worry-and-panic/201505/petal-power-why-is-gardening-so-good-our-mental-health>
- <https://qz.com/993258/dirt-has-a-microbiome-and-it-may-double-as-an-antidepressant/>
- <https://www.newsday.com/lifestyle/columnists/jessica-damiano/bacteria-in-soil-has-antidepressant-effects-1.12833160>
- <https://www.medicalnewstoday.com/articles/66840.php>
- <https://www.sciencedaily.com/releases/2007/04/070402102001.htm>

Follow these links to read why it is so important to create ponds, waterfalls or water features and pesticide-free native gardens

- HOW BIRDS KEEP OUR WORLD SAFE FROM THE PLAGUES OF INSECTS: http://nationalzoo.si.edu/ConservationAndScience/MigratoryBirds/Fact_Sheets/default.cfm?xsht=2
- WHERE BIRDS GO IN A IN A HURRICANE: <https://www.forbes.com/sites/grrlscientist/2017/09/08/where-do-birds-go-in-a-hurricane/#1055f36b254a>
- IMPACT OF NATIVE PLANTS on Bird and Butterfly Biodiversity in Suburban Landscapes: <http://blog.audubon.org/cs/blogs/birdscapes/archive/2009/03/10/impact-of-native-plants-on-bird-and-butterfly-biodiversity-in-suburban-landscapes.aspx>
- BRINGING NATURE HOME: HOW NATIVE PLANTS SUSTAIN WILDLIFE IN OUR GARDENS: <http://bringingnaturehome.net/book>
- SONGBIRD JOURNEYS: <http://www.songbirdjourneys.com/>
- RACHEL CARSON LIVES ON: <http://www.nrdc.org/health/pesticides/hcarson.asp>
- WHITE HOUSE COMMENTS: <http://www.whitehouse.gov/news/releases/2007/10/print/20071019-18.html>
- AUDUBON BIRDS IN DECLINE: <http://web1.audubon.org/news/pressRelease.php?id=3>
- AUDUBON STATE OF THE BIRDS 2017: <http://www.stateofthebirds.org/2017>
- List of Top 20 Common Birds in Decline: <http://stateofthebirds.audubon.org/cbid/browseSpecies.php>
- AUDUBON CLIMATE CHANGE REPORT 2014: <http://climate.audubon.org/>
- TO FEED THE BIRDS, FIRST FEED THE BUGS: <http://www.nytimes.com/2008/03/06/garden/06garden.html>
- A WATER PUDDLE BRINGS WARBLERS Huntington Central Park in Sept 2007 Photos by Monte M. Taylor and Christopher H. Taylor: http://www.tsuru-bird.net/20070930_california/index.html

Where to get Info about birds, plants and water:

- ABC'S top Ten Tips for Bird-Friendly Living (American Bird Conservancy) <http://www.abcbirds.org/newsandreports/Toptips.pdf>
- Be Water Wise Rebate Program - Metropolitan Water District of Southern California and The Family of Southern California Water Agencies http://www.bewaterwise.com/ww_landscaping.html
- Audubon At Home - Healthy Yard Pledge http://www.audubon.org/bird/at_home/
- Los Angeles Audubon Society - Go Native to Attract Birds <http://losangelesaudubon.org/conservation-a-restoration/go-native-to-attract-birds>
- California School Garden Network <http://csgn.org/>
- Central Basin Municipal Water District <http://www.centralbasin.org/>
- California Native Plant Society <http://www.cnps.org/>
- County of LA Department of Public Works - Smart Gardening Program <http://dpw.lacounty.gov/epd/sg/>
- <http://dpw.lacounty.gov/wwd/web/Documents/DroughtTolerantPlants.pdf>
- #H2No <http://www.joinh2no.com/>
- Master Gardener Program University of California ANR (Agriculture and Natural Resources) Cooperative Extension <http://camastergardeners.ucdavis.edu/>
- National Wildlife Federation "Garden for Wildlife" - Create a Certified Wildlife Habitat <http://www.nwf.org/backyard/index.cfm>
- The Bay Foundation: Rainwater Harvesting and Rain Gardens <http://www.santamonicabay.org/explore/our-communities/rainwater-harvesting-rain-gardens/>
- US Department of Agriculture NRCS (Natural Resources Conservation Service) Backyard Conservation <http://www.nrcs.usda.gov/feature/backyard/>
- WBMWD (West Basin Municipal Water District) <http://www.westbasin.org/>
- WRD (Water Replenishment District of Southern California) <http://www.wrd.org/>

Where to buy native plants and seeds, take classes and get info on the garden:

- C&S Nursery (Los Angeles) <http://www.csnursery.com/>
- International Garden Center (El Segundo) <http://www.igardencenter.com/IGC/>
- Manhattan Beach Botanical Garden – Julie Gonella <http://www.manhattanbeachbotanicalgarden.org/>
(310) 546-1354
- Marina Garden Center (Marina del Rey) <http://marinagardencenter.com/>
- Matilija Nursery (Moorpark) <http://www.matilijanursery.com/>
- Theodore Payne Foundation (Sun Valley) <http://www.theodorepayne.org/>
- Tree of Life Nursery (San Juan Capistrano) <http://www.californianativeplants.com/>

- Madrona Marsh Nature Center (Torrance) - Connie Vadheim and Tracy Drake
<http://www.friendsofmadronamarsh.com/> (310) 782-3989
 1. “Out of the Wilds and Into Your Garden” Series
 2. “One Pot at a Time” Project
 3. Ongoing Classes and Workshops

- Mother Nature’s Backyard: Water-wise and Life Friendly Gardening (out of Gardena Willows):
<http://mother-natures-backyard.blogspot.com/>
- Native Plants at CSUDH: Research, Restoration and Education with California Native Plants
<http://nativeplantscsudh.blogspot.com/>
- Rancho Santa Ana Botanical Garden <http://www.rsabg.org/>

Where to get bird seed, feeders and water features:

- Aquatic Services – Marine, Freshwater, Ponds, Installation and Service Bill Kalinowski (310) 822-7870 Torrance
- Avian Aquatics – Water Features <http://www.aboutus.org/AvianAquatics.com> may be out of business or merged with Birds Choice: <http://www.birdschoice.com/>
- Enviroscape LA – Waterwise gardening and water features <http://enviropela.com/>
- Real Goods – Solar Water Features <http://www.realgoods.com/?gclid=S31185x001&keyword=real+goods>
- Sierra Pacific Designs – Ponds and Waterfalls, Jamie Schevers (866) 888-POND (7663) or (310) 915-6600 Los Angeles <http://www.sierrapacificdesigns.com/>
- Simply Fountains – solar fountains <http://www.simplyfountains.com/outdoor-fountains/solar-fountains/2084+2087+3574.cfm>
- Wild Birds Unlimited – seed, feeders, birdbaths, books and more, Bob Shanman 25416 Crenshaw Blvd Torrance, CA 90505 (310) 326-BIRD(2473) *In Rolling Hills Plaza at corner of PCH* Store Hours: Mon, Wed - Sat 10-6; Tue 10-5:30, Sun 11-4 <http://torrance.wbu.com/>
- Wild Wings - Your Backyard Nature Store – seed, feeders, birdbaths, etc., and a fabulous live butterfly habitat! Located at: 4337 Woodman Ave, Sherman Oaks, CA 91423 Phone: (818) 995-0022, Fax: (818) 995-0722, Email: wildwingsla@gmail.com, <http://www.wildwingsla.com/>

Garden Resources On-line - PLANTS

- Annie's Annuals & Perennials <http://www.anniesannuals.com>
- Calflora <http://www.calflora.org/index0.html>
- CalPhotos Plants <http://calphotos.berkeley.edu/flora/>
- El Nativo Growers (Azusa) <http://www.elnativogrowers.com/> (through garden centers)
- Lady Bird Johnson Wildflower Center *Austin, Texas-based center, website includes image gallery and native plants database* <http://www.wildflower.org>
- Las Pilitas Nursery (San Juan Capistrano) <http://laspilitas.com/> (on-line or open Fri/Sat Only)
- Larner Seeds <http://www.larnerseeds.com/>
- Manhattan Beach Botanical Garden
<http://www.manhattanbeachbotanicalgarden.org/MBBGplantlist.html>
- Matilija Nursery <http://www.matilijanursery.com/>
- Mother Nature's Backyard Plants at the Gardena Willows Wetland Preserve <http://mother-natures-backyard.blogspot.com/p/plant-list-tentative.html>
- Native Grow Nursery <http://www.nativegrow.com/>
- Native Sons Nursery <http://nativeson.com/plants.htm>
- Plant Native http://www.plantnative.org/nd_ca.htm
- Rancho Santa Ana Botanical Garden <http://www.rsabg.org/public/plant-lists>
- Sunset <http://plantfinder.sunset.com/sunset/plant-home.jsp>
- Theodore Payne Foundation <http://www.theodorepayne.org/>
- Tree of Life Nursery <http://www.californianativeplants.com/index.php/plants/plant-catalog>
- UC ANR Cooperative Extension – Master Gardner Program
<http://ucanr.org/findinformation.cfm?findinfosub=6>
<http://celosangeles.ucdavis.edu/>
- USDA National Resources Conservation Service <http://plants.usda.gov/>
- Yerba Buena Nursery <http://www.yerbabuenanursery.com/BirdPlantsforNativeGarden.php>

Garden Resources On-line

LOCAL SOURCES OF HARDSCAPE MATERIALS

Decomposed Granite, Crushed Rock, Sand, Rock

- Dirt Cheap Delivered (S. CA); DG, other rock products, sand http://www.dirtcheapdelivered.com/Home_Page.php
- Robertsons (Gardena) – rock products, sand <http://www.rrmca.com/>
- Dirt Yard LLC - 750 North Francisca Avenue, Redondo Beach, CA 90277
- Gail Materials (Corona); DG; stabilized DG, NexPave <http://www.gailmaterials.net/>
- All Valley Sand & Gravel (Sylmar); DG, other rock products, sand <http://www.allvalleyconcrete.com/home.nxg>
- O.F. Wolfenbarger (Chino); DG, other rock products, sand <http://www.ofwolfinbargerinc.com/door/>
- Brandel Masonry Supplies (Pomona); DG, other rock products, sand <http://www.gobrandel.com/brandelindex.html>
- Cal-blend Soils (Irwindale); DG, other rock products, sand <http://www.calblendsoils.com/services.nxg>

Brick, Pavers, Tile Rock & Other

- Bourget Brothers (Santa Monica) – tile, stone, rock, recycled glass <http://www.bourgetbros.com/>
- Sepulveda Building Materials (Gardena) – rock, DG, brick, pavers <http://www.sepulveda.com/>
- Thompson Building Materials – 1350 W Pacific Coast Highway, Wilmington, 90744 <http://www.thompsonbldg.com/index.html>
- West LA Building Materials (Santa Monica, Inglewood) – rock, brick tile, pavers <http://www.flagstonespecialist.com>

Garden Resources On-line

WHERE TO GET TANKS/BARRELS AND OTHER EQUIPMENT FOR HARVESTING RAINWATER

Rain Barrels

- D & D Group/Plastic Mart – Tanks
13493 Prospector Ct
Corona, CA 92880
- Green Culture – Rain Barrels <http://www.greenculture.com/>
- LA Stormwater <http://www.lastormwater.org/blog/category/rain-barrels-cisterns/>
- **Rain Gardens, Swales, French Drains**
- Rain Gardens http://blog.mountainhardwear.com/2009/02/build_a_rain_garden.html
- French Drains <http://www.laquakeproofer.com/basement-waterproofing/french-drain-california.php>
- French Drain Installation <http://ezinearticles.com/?French-Drain-Installation-and-Home-Foundations&id=524379>

Water Conservation

LA Department of Water and Power (LADWP)

- http://www.ladwp.com/ladwp/areaHomeIndex.jsp?contentId=LADWP_GREENLA_SCID
- Metropolitan Water District of Southern California (Be Waterwise) <http://www.bewaterwise.com/>
- WBMWD (West Basin Municipal Water District) <http://www.westbasin.org/>
- Water Replenishment District for Southern California (WRD) <http://www.wrd.org/>

Garden Resources On-line

OTHER RESOURCES

Arborist / Free Mulch (pick up or delivery)

E. Berumen Landscape

5169 West Adams Boulevard (at La Brea)

Los Angeles, CA 90016

(310) 629-2356

eberumen@ca.rr.com

Everardo is the dad and Eddie is the son

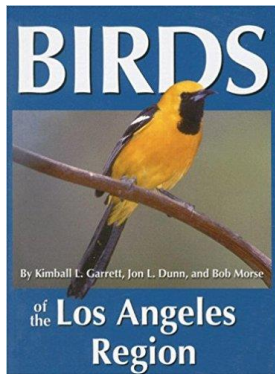
Plant Identifying Signs

Kinsman Company <http://www.kinsmangarden.com/category/s?keyword=rose+marker>

The plant signs are actually called “rose markers” – they are good for identifying the genus and species and common names of native plants in the garden, and they wear well with the elements

Birding Resources

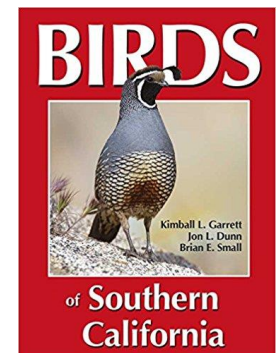
- Apps
 - Audubon Bird Guide – free (phone)
 - iBird PRO app - \$14.95 (phone)
 - Merlin Bird ID app - free (phone)
- American Birding Conservancy (ABC) <https://abcbirds.org/>
- National Audubon Society (NAS) <http://www.audubon.org/>
- Audubon California <http://ca.audubon.org/>
- Cornell Lab of Ornithology
 - www.birds.cornell.edu
 - <http://www.allaboutbirds.org/>
- Macauley Library (Cornell)
 - <https://macaulaylibrary.org/browse/taxa/aves>
- The Institute for Bird Populations <http://www.birdpop.org/>
- Join a Local Audubon Birding Group
 - Los Angeles Audubon Society <http://losangelesaudubon.org>
 - San Fernando Audubon Society <https://www.sfvaudubon.org/>
 - Santa Monica Bay Audubon Society <https://smbasblog.com/>
- Join a Local Birding Email Group
 - LACoBirds <https://groups.yahoo.com/neo/groups/LACoBirds/info>
 - CalBirds <https://groups.yahoo.com/neo/groups/CALBIRDS/info?referrer=LACoBirds>



Birding Resources

– Bird Reference Books

- 1) A Birder's Guide to Southern California, by Brad Schram, published by American Birding Association (ABA), 1998
- 2) Birds of the Los Angeles Region, by Kimball L. Garrett, Jon L. Dunn, and Bob Morse, 2006
- 3) Birds of North America, By Kenn Kaufman, 2000
- 4) Birds of Southern California, by Kimball L. Garrett, Jon L. Dunn, Brian E. Small, 2012
- 5) Field Guide to the Birds – Western Region, by Donald & Lillian Stokes, 1996
- 6) Field Guide to the Birds of North America, published by National Geographic, 1999
- 7) Field Guide to the Birds of Western North America, published by National Geographic, 2008
- 8) Important Bird Areas of California, by Daniel S. Cooper, published by Audubon California, 2004
- 9) Sibley Field Guide to Birds – Western North America, by David Sibley, 2003
- 10) Western Birds, by Roger Tory Peterson, 1990



Get your bird on! (other Bird Resources)

- A. AUDUBON STATE OF THE BIRDS 2017: <http://www.stateofthebirds.org/2017>
- B. Audubon's Birds and Climate Change Report - September 2014: <http://climate.audubon.org/>
- C. Bird Checklist for Southern California – use this to create your own:
<http://losangelesaudubon.org/images/stories/pdf/fieldlistofthebirdsoflosangelescounty.pdf>
- D. Bird LA Day – May 12, 2018 <http://birdladay.org/>
- E. BRINGING NATURE HOME: HOW NATIVE PLANTS SUSTAIN WILDLIFE IN OUR GARDENS:
<http://bringingnaturehome.net/book>
- F. **Christmas Bird Count (CBC) 2017/2018 – do a count for your area with a local Audubon Chapter:**
<https://www.audubon.org/conservation/science/christmas-bird-count>
- G. eBird – a great way to capture your data and compare with others around the world: <http://ebird.org/content/ebird/>
- H. Gardening For Life, article by Douglas Tallamy: <http://www.for-wild.org/download/tallamy/gardeningforlife.html>
- I. Great Backyard Bird Count (GBBC) February 16-19, 2018 – just do it: <http://gbbc.birdcount.org/>
- J. HOW BIRDS KEEP OUR WORLD SAFE FROM THE PLAGUES OF INSECTS:
http://nationalzoo.si.edu/ConservationAndScience/MigratoryBirds/Fact_Sheets/default.cfm?fxsh=2
- K. iNaturalist – a great way to share your observations with others from around the world: <http://www.inaturalist.org/>
- L. LA County Birds Yahoo Group – to keep up on local sightings: <https://groups.yahoo.com/group/LACoBirds/>
- M. Mobile Phone Apps: **Audubon California Birds, iBird PRO, Sibley Life, Merlin Bird ID**
- N. IMPACT OF NATIVE PLANTS on Bird and Butterfly Biodiversity in Suburban Landscapes:
<http://blog.audubon.org/cs/blogs/birdscapes/archive/2009/03/10/impact-of-native-plants-on-bird-and-butterfly-biodiversity-in-suburban-landscapes.aspx>
- O. Los Angeles leads all US counties nationwide in bird count - February 2014: <http://ca.audubon.org/newsroom/press-releases/2014/los-angeles-leads-all-us-counties-nationwide-bird-count>
- P. State Of North America's Birds 2016: <https://www.allaboutbirds.org/state-of-north-americas-birds-2016-more-than-one-third-in-need-of-conservation-action/>
- Q. Year of the Bird 2018: <https://www.nationalgeographic.com/magazine/2018/01/why-birds-matter/>

How resourceful do birds have to be looking for water?

A WATER PUDDLE BRINGS WARBLERS Huntington Central Park in
Sept 2007 Photos by Monte M. Taylor and Christopher H. Taylor:

http://www.tsuru-bird.net/20070930_california/index.html



These are just a few select images of warblers, tanagers and flycatchers in one spot (3 square meters) for a couple hours on a fall day in Huntington Beach Central Park.

- Black-throated Gray Warbler
- Blackpole Warbler
- Common Yellowthroat
- Nashville Warbler
- Orange-crowned Warbler
- Tennessee Warbler
- Townsend's Warbler
- Yellow-rumped Warbler
- Yellow Warbler
- Western Tanager
- Western Wood Pewee

How resourceful do birds have to be looking for shelter?



- These Bluebirds are surviving a cold winter together in the hollow of a tree.
- Under normal circumstances they'd be competing for their territories and chasing each other away.
- Their very existence is so fragile, hinging on mankind realizing what they are up against, and helping them with the odds -- by NOT CUTTING DOWN EVERY DEAD HOLLOWED OUT TREE!

Photo property of National Wildlife Federation www.nwf.org

BACK COVER: Another memorable picture from a past issue, Michael L. Smith's photo of eastern bluebirds appeared in the April/May 1984 article "Blueprint for Bluebirds." The birds had crowded together for warmth inside a nesting cavity in Maryland during cold weather.



Volume 40, Number 6
October / November 2002

CELEBRATING 2018 AS THE YEAR OF THE BIRD

<https://www.nationalgeographic.org/projects/year-of-the-bird/>

“IF YOU TAKE CARE OF BIRDS, YOU TAKE CARE OF MOST OF THE ENVIRONMENTAL PROBLEMS IN THE WORLD.”

Thomas Lovejoy
Biologist and Godfather of Biodiversity

Watch these videos for more inspiration:

The **Cornell** Lab of Ornithology
Exploring and Conserving Nature



<https://youtu.be/c0caVjDTyZo>



EXTRAORDINARY
FOOTAGE SHOWS
MICROLIGHT PILOT
DUBBED 'BIRDMAN'
TAKING TO THE
SKIES

<https://www.youtube.com/watch?v=tqozaQ0N59c>

<http://www.dailymail.co.uk/news/article-5220829/Microlight-pilot-dubbed-birdman-flies-geese.html>

Get your bird on!

Birds are the fly-through eye candy that tie habitats and neighborhoods together

For the first time, scientists at the Cornell Lab of Ornithology have documented migratory movements of bird populations spanning the entire year for 118 species throughout the Western Hemisphere. The study finds broad similarity in the routes used by specific groups of species—vividly demonstrated by animated maps showing patterns of movement across the annual cycle.

<https://www.allaboutbirds.org/mesmerizing-migration-watch-118-bird-species-migrate-across-a-map-of-the-western-hemisphere/>

<https://www.allaboutbirds.org/mesmerizing-migration-map-which-species-is-which/>

Citizen Science (Birding and Wildlife)

- E-bird
 - www.ebird.org
- iNaturalist
 - <http://www.inaturalist.org/>
- Christmas Bird Count (CBC)
 - <http://www.audubon.org/conservation/science/christmas-bird-count>
- Great Backyard Bird Count (CBBC)
 - <http://gbbc.birdcount.org/about/>
- Project Feederwatch
 - www.feederwatch.org

Bird and Garden Resources

- 1) "A CALIFORNIAN'S GUIDE TO THE TREES AMONG US", by Matt Ritter
- 2) "AN INTRODUCTION TO SOUTHERN CALIFORNIA BUTTERFLIES", by Fred Heath and Herbert Clarke
- 3) "BRINGING NATURE HOME How You Can Sustain Wildlife with Native Plants", by Douglas Tallamy
- 4) "CALIFORNIA NATIVE PLANTS FOR THE GARDEN", by Carol Bornstein, David Fross and Bart O'Brien
- 5) "DESIGNING CALIFORNIA NATIVE GARDENS", by Glenn Keator and Alrie Middlebrook
- 6) "FLOWERING PLANTS The Santa Monica Mountains Coastal & Chaparral Regions of Southern California", by Nancy Dale and California Native Plant Society
- 7) "GARDENING WITH A WILD HEART Restoring California's Landscapes at Home", by Judith Lerner Lowry
- 8) "HEALING WITH MEDICINAL PLANTS OF THE WEST", by Cecilia Garcia and James D. Adams, Jr.
- 9) "HOW TO BE A (BAD) BIRDWATCHER", by Simon Barnes
- 10) "INSECTS OF THE LOS ANGELES BASIN", by Charles L. Hogue
- 11) "KINGBIRD HIGHWAY: The Biggest Year in the Life of an Extreme Birder", by Kenn Kaufman
- 12) "NATIVE TREASURES, GARDENING WITH THE PLANTS OF CALIFORNIA", by M. Nevin Smith
- 13) "REIMAGING THE CALIFORNIA LAWN Water-conserving Plants, Practices, and Designs" by Carol Bornstein, David Fross, and Bart O'Brien
- 14) "SONGBIRD JOURNEYS Four Seasons in the Lives of Migratory Birds", by Miyoko Chu
- 15) "TENDING THE WILD", by M. Kat Anderson
- 16) "THE GENIUS OF BIRDS", by Jennifer Ackerman
- 17) "THE HIDDEN LIFE OF TREES What They Feel, How They Communicate", by Peter Wohlleben
- 18) "THE LANDSCAPING IDEAS OF JAYS A Natural History of the Backyard Restoration Garden", by Judith Lerner Lowry
- 19) "THE SINGING LIFE OF BIRDS The Art and Science of Listening to Birdsong", by Donald Kroodsma
- 20) "THE SOIL WILL SAVE US How Scientists, Farmers, and Foodies are Healing the Soil to Save the Planet", by Kristin Ohlson
- 21) "THE SONGS OF TREES Stories From Nature's Great Connectors", by David George Haskell
- 22) "WILDFLOWERS OF THE SANTA MONICA MOUNTAINS", by Milt McAuley

16 places to go to see Native Gardens:

1. Baldwin Hills Scenic Overlook Park, Culver City
2. Ballona Wetlands – Discovery Park, Playa Vista
3. Ballona Wetlands – Ecological Reserve (Fresh and Salt Water Marshes)
4. Ballona Wetlands – Freshwater Marsh, near Playa del Rey
5. CSU Dominguez Hills Discovery Garden, Carson
6. Debs Park Audubon Center, near downtown LA
7. Eaton Canyon Natural Area, Pasadena
8. El Dorado Nature Center, Long Beach
9. Gardena Willows, Gardena
10. Kenneth Hahn Recreation Area (Native Plant and Wildlife Garden)
11. Madrona Marsh Preserve, Torrance (Native plant garden around Center and on Preserve)
12. Malibu Lagoon, Malibu
13. Manhattan Beach Botanical Garden, Manhattan Beach
14. Rancho Santa Ana Botanical Garden, Rancho Santa Ana
15. South Coast Botanical Garden, Palos Verdes Peninsula
16. Theodore Payne Foundation (native plants and trails), Sun Valley

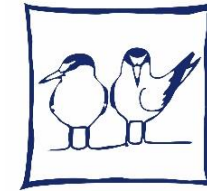
Links to 24 “local” places to hike, see birds, plants and wildlife:

1. Angel’s Gate Friendship Park http://www.sanpedro.com/sp_point/agrecent.htm
2. Baldwin Hills Scenic Overlook Park http://www.parks.ca.gov/?page_id=22790
3. Ballona Wetlands Ecological Reserve <http://www.ballonafriends.org/habitat.html>
4. Bolsa Chica Ecological Reserve <http://bolsachica.org/>
5. Debs Park Audubon Center http://ca.audubon.org/debs_park.php
6. Descanso Gardens (La Canada/Flintridge)
http://www.descansogardens.org/index.php?option=com_content&view=article&id=54&Itemid=63
7. Eaton Canyon Natural Area <http://www.ecnca.org/>
8. El Dorado Nature Center <http://www.longbeach.gov/park/park-and-facilities/parks-centers-pier/el-dorado-nature-center/>
9. Franklin Canyon Park http://www.lamountains.com/planning_franklin.html
10. Gardena Willows <http://www.gardenawillows.org/>
11. Huntington Gardens (San Marino) <http://www.huntington.org/huntingtonlibrary.aspx?id=210&linkidentifier=id&itemid=210>
12. Kenneth Hahn Recreation Area http://www.parks.ca.gov/?page_id=612
13. Ken Malloy Harbor Regional Park (Harbor City) <http://www.laparks.org/dos/parks/facility/kenMalloyHarborPk.htm>
14. Madrona Marsh Preserve <http://www.friendsofmadronamarsh.com/j/>
15. Malibu Lagoon State Beach <http://www.lamountains.com/parks.asp?parkid=154>
16. Manhattan Beach Botanical Garden <http://www.manhattanbeachbotanicalgarden.org/>
17. Newport Beach Back Bay Bike Trail <http://www.daytrippen.com/newportbackbay.html>
18. Point Vicente Interpretive Center (Rancho Palos Verdes)
<http://www.palosverdes.com/rpv/recreationparks/PointVicenteInterpretiveCenter/index.cfm>
19. Rancho Santa Ana Botanical Garden <http://www.rsabg.org/>
20. South Coast Botanical Garden <http://www.southcoastbotanicgarden.org/>
21. Temescal Canyon <http://www.lamountains.com/parks.asp?parkid=58>
22. Topanga Canyon State Park http://www.parks.ca.gov/?page_id=629
23. Theodore Payne Foundation <http://www.theodorepayne.org/>
24. Will Rogers State Park <http://www.lamountains.com/parks.asp?parkid=140>

13 Favorite “Day Trips” or Overnight

1. Anzo Borrego Desert State Park http://www.parks.ca.gov/?page_id=638
2. Kern River Preserve <http://kern.audubon.org/>
3. Owens Lake <http://www.ovcweb.org/OwensValley/Owenslake.html>
4. Salton Sea http://www.parks.ca.gov/default.asp?page_id=639
5. Sequoia National Park <http://www.visitsequoia.com/>
6. Torrey Pines State Natural Reserve <http://www.torreypine.org/>
7. Idyllwild <http://www.idyllwild.com/hiking.html>
8. Lancaster Poppy Festival <http://www.poppyfestival.com/>
9. Joshua Tree National Park <http://www.nationalparks.org/discover-parks/?fa=viewPark&pid=JOTR>
10. Point Vicente Interpretive Center (*see whales off the coast*)
http://www.sanpedro.com/sp_point/ptvicic.htm
11. Red Rock Canyon State Park http://www.parks.ca.gov/?page_id=25204
12. Royal Palms State Beach - aka White Point (*fabulous tide pools*)
http://www.sanpedro.com/sp_point/roylplms.htm
13. White Point Nature Preserve http://www.pvplc.org/_lands/whitepoint.asp

Ballona Discovery Park



Located at: 13110 Bluff Creek Drive,
(off Lincoln Boulevard) Playa Vista, CA 90094

Center for Urban Resilience (CUREs)

<http://cures.lmu.edu/our-programs/education/ballona-discovery-park/>

Friends of Ballona Wetlands

http://www.ballonafriends.org/visit_discovery_park.html



CUREs Contact:
(310) 338-5104
CUREs@lmu.edu
<http://cures.lmu.edu/>

Friends Contact:
(310) 306-5994
info@ballonafriends.org
<http://www.ballonafriends.org/>