

Open Research Online

The Open University's repository of research publications and other research outputs

Plant functional and taxonomic diversity in European grasslands along climatic gradients

Journal Item

How to cite:

Boonman, Coline C. F.; Santini, Luca; Robroek, Bjorn J. M.; Hoeks, Selwyn; Kelderman, Steven; Dengler, Jürgen; Bergamini, Ariel; Biurrun, Idoia; Carranza, Maria Laura; Cerabolini, Bruno E. L.; Chytrý, Milan; Jandt, Ute; Lysenko, Tatiana; Stanisci, Angela; Tatarenko, Irina; Rσία, Solvita; Huijbregts, Mark A. J. and Pärtel, Meelis (2021). Plant functional and taxonomic diversity in European grasslands along climatic gradients. *Journal of Vegetation Science*, 32(3), article no. e13027.

For guidance on citations see [FAQs](#).

© 2021 The Authors



<https://creativecommons.org/licenses/by/4.0/>

Version: Version of Record

Link(s) to article on publisher's website:
<http://dx.doi.org/doi:10.1111/jvs.13027>

Copyright and Moral Rights for the articles on this site are retained by the individual authors and/or other copyright owners. For more information on Open Research Online's data [policy](#) on reuse of materials please consult the policies page.

Plant functional and taxonomic diversity in European grasslands along climatic gradients

Coline C. F. Boonman¹  | Luca Santini^{2,3}  | Bjorn J. M. Robroek⁴  | Selwyn Hoeks¹  | Steven Kelderman¹ | Jürgen Dengler^{5,6,7}  | Ariel Bergamini⁸  | Idoia Biurrun⁹  | Maria Laura Carranza¹⁰  | Bruno E. L. Cerabolini¹¹  | Milan Chytrý¹²  | Ute Jandt^{13,14}  | Tatiana Lysenko^{15,16}  | Angela Stanisci¹⁷  | Irina Tatarenko¹⁸  | Solvita Rūsiņa¹⁹  | Mark A. J. Huijbregts¹ 

¹Department of Environmental Science, Institute for Water and Wetland Research, Radboud University, Nijmegen, The Netherlands

²Department of Biology and Biotechnologies "Charles Darwin", Sapienza Università di Roma, Rome, Italy

³National Research Council, Institute of Research on Terrestrial Ecosystems (CNR-IRET), Monterotondo, Italy

⁴Department of Aquatic Ecology and Environmental Biology, Institute for Water and Wetland Research, Radboud University, Nijmegen, The Netherlands

⁵Vegetation Ecology Group, Institute of Natural Resource Sciences (IUNR), Zurich University of Applied Sciences (ZHAW), Wädenswil, Switzerland

⁶Plant Ecology, Bayreuth Center of Ecology and Environmental Research (BayCEER), Bayreuth, Germany

⁷German Centre for Integrative Biodiversity Research (iDiv) Halle-Jena-Leipzig, Leipzig, Germany

⁸WSL Swiss Federal Research Institute, Birmensdorf, Switzerland

⁹Plant Biology and Ecology, Faculty of Science and Technology, University of the Basque Country UPV/EHU, Bilbao, Spain

¹⁰EnvixLab, University of Molise, Pesche (IS), Italy

¹¹Department of Biotechnologies and Life Sciences (DBSV), University of Insubria, Varese, Italy

¹²Department of Botany and Zoology, Faculty of Science, Masaryk University, Brno, Czech Republic

¹³Institute of Biology, Martin Luther University Halle-Wittenberg, Halle (Saale), Germany

¹⁴German Centre for Integrative Biodiversity Research (iDiv) Halle-Jena Leipzig, Leipzig, Germany

¹⁵General Vegetation Laboratory, Komarov Botanical Institute RAS, Saint-Petersburg, Russia

¹⁶Phytodiversity Problems Laboratory, Samara Federal Research Center RAS, Institute of the Ecology of the Volga Basin RAS, Togliatti, Russia

¹⁷EnvixLab, University of Molise, Termoli, Italy

¹⁸School of Environment, Earth and Ecosystem Sciences, Faculty of Science, Technology, Engineering and Mathematics, The Open University, Milton Keynes, UK

¹⁹Faculty of Geography and Earth Sciences, University of Latvia, Riga, Latvia

Correspondence

Coline C. F. Boonman, Department of Environmental Science, Institute for Water and Wetland Research, Radboud University, PO Box 9010, NL-6500 GL, Nijmegen, The Netherlands.
Email: C.Boonman@science.ru.nl

Abstract

Aim: European grassland communities are highly diverse, but patterns and drivers of their continental-scale diversity remain elusive. This study analyses taxonomic and functional richness in European grasslands along continental-scale temperature and precipitation gradients.

Location: Europe.

This article is a part of the Special Feature Macroecology of Vegetation, edited by Meelis Pärtel, Francesco Maria Sabatini, Naia Morueta-Holme, Holger Kreft and Jürgen Dengler.

This is an open access article under the terms of the Creative Commons Attribution License, which permits use, distribution and reproduction in any medium, provided the original work is properly cited.

© 2021 The Authors. *Journal of Vegetation Science* published by John Wiley & Sons Ltd on behalf of International Association for Vegetation Science

Funding information

CCFB, MAJH and SH were supported by the ERC project (CoG SIZE 647224), IB by the Basque Government (IT936-16), MC by the Czech Science Foundation (19-28491X), and SR by the University of Latvia grant (AAp2016/B041/Zd2016/AZ03).

Co-ordinating Editor: Meelis Pärtel

Methods: We quantified functional and taxonomic richness of 55,748 vegetation plots. Six plant traits, related to resource acquisition and conservation, were analysed to describe plant community functional composition. Using a null-model approach we derived functional richness effect sizes that indicate higher or lower diversity than expected given the taxonomic richness. We assessed the variation in absolute functional and taxonomic richness and in functional richness effect sizes along gradients of minimum temperature, temperature range, annual precipitation, and precipitation seasonality using a multiple general additive modelling approach.

Results: Functional and taxonomic richness was high at intermediate minimum temperatures and wide temperature ranges. Functional and taxonomic richness was low in correspondence with low minimum temperatures or narrow temperature ranges. Functional richness increased and taxonomic richness decreased at higher minimum temperatures and wide annual temperature ranges. Both functional and taxonomic richness decreased with increasing precipitation seasonality and showed a small increase at intermediate annual precipitation. Overall, effect sizes of functional richness were small. However, effect sizes indicated trait divergence at extremely low minimum temperatures and at low annual precipitation with extreme precipitation seasonality.

Conclusions: Functional and taxonomic richness of European grassland communities vary considerably over temperature and precipitation gradients. Overall, they follow similar patterns over the climate gradients, except at high minimum temperatures and wide temperature ranges, where functional richness increases and taxonomic richness decreases. This contrasting pattern may trigger new ideas for studies that target specific hypotheses focused on community assembly processes. And though effect sizes were small, they indicate that it may be important to consider climate seasonality in plant diversity studies.

KEYWORDS

environmental filtering, favourability hypothesis, functional richness, grassland diversity, limiting similarity, null model, plant trait diversity, precipitation gradient, seasonality, taxonomic richness, temperature gradient, trait-environment relationship

1 | INTRODUCTION

Grasslands are among the most diverse ecosystems in Europe (Wilson et al., 2012; Dengler et al., 2020). They have been extensively studied for a long time and with long-term monitoring schemes (Scholz, 1975; Willems, 1983; Tilman et al., 2006). Various assembly processes have been put forward that may explain the origin and maintenance of European grassland diversity, e.g., competitive hierarchy and niche partitioning (Mori et al., 2018). Yet, over the last 50 years, European grassland diversity has seen a dramatic decrease, often being attributed to increased nutrient availability (Wesche et al., 2012), overgrazing (Dengler et al., 2020) or drought (Carmona et al., 2012; Nogueira et al., 2018). Insight into patterns of plant diversity over environmental gradients is needed to aid deeper understanding of the effects of global change on biodiversity (e.g., Mooney et al.,

2009; Cardinale et al., 2012; Funk et al., 2017) and may also improve our understanding of the mechanisms that underlie community assembly (MacArthur & Levins, 1967; McGill et al., 2006).

In the context of macroecology, diversity patterns of vegetation are typically discussed via various filtering mechanisms (e.g., Weiher et al., 2011). First, the dispersal filter determines the ability of a species to be present in a specific location, and hence the regional plant species pool and plant trait pool (Cadotte & Tucker, 2017). Second, environmental conditions act as an additional filter on plant communities, sorting those that fulfill local (fundamental) niche requirements constituted by physiological constraints (Leibold et al., 2004; Tingley et al., 2014). Under the favorability hypothesis, the more extreme or unfavorable environmental conditions are, the more selective environmental filters are (Fischer, 1960). This suggests that only plants with trait values well adapted to the extreme



conditions persist, resulting in a reduction in community functional diversity in extreme conditions (de Bello et al., 2009; Mayfield & Levine, 2010; Shen et al., 2016). A third filter may be biotic interactions, representing a counter-gradient with competitive interspecific interactions being the main driver of plant community composition at low abiotic stress (the stress gradient hypothesis; Bertness & Callaway, 1994). While this competition may lead to exclusion of species and reduced trait variation (Grime, 2006; Mayfield & Levine, 2010; Kunstler et al., 2012), facilitative interactions have been suggested to dominate when abiotic stress is high (Bertness & Callaway, 1994; Brooker & Callaghan, 1998), leading to higher trait divergence and increased functional diversity (Valiente-Banuet & Verdú, 2007; McIntire & Fajardo, 2014). Finally, the occurrence and abundance of a plant may also be influenced by temporal variation in climate or other stressors (Díaz & Cabido, 1997; González-Moreno et al., 2015; Fischer et al., 2020). Plants can occur in a place as long as species' niche requirements are met at some time of the year, i.e., exploiting temporarily empty niches (Godoy et al., 2009). This expansion of the realized niche can be especially important for the diversity of plant communities in temperate regions (Scheiner & Rey-Benayas, 1994; Breitschwerdt et al., 2018).

When describing diversity patterns, the focus should not only be on plant species identity (i.e., their taxonomy) but also on plant traits. As traits describe a more direct link between the performance of an organism, local environmental conditions, and a plant's functioning in the community (Keddy, 1992; Funk et al., 2017), they play a critical role in determining local plant community diversity (Tilman et al., 1997; Weiher et al., 1998). Especially when non-random processes determine community assemblages, species diversity is not an adequate surrogate for functional diversity (Díaz & Cabido, 2001). However, both species and trait composition vary along environmental gradients (e.g., Raymundo et al., 2018), making the separation of taxonomic and functional diversity difficult (e.g., Hooper et al., 2002; Petchey & Gaston, 2002). To control for potentially coincidental similarity in diversity–environment trends, specifically designed field experiments are needed or one can use null models that check for functional diversity patterns different from random sampling of species (Gotelli & Graves, 1996; Swenson et al., 2012).

Taken together, the net influence of the various filtering mechanisms on taxonomic and functional plant richness along large environmental stress gradients remains elusive. Part of this ambiguous question is the value of considering plant trait diversity in addition to taxonomic diversity. Here, we analyzed functional and taxonomic richness in European grasslands along temperature and precipitation gradients. We quantified the absolute functional and taxonomic richness directly derived from the community data, as well as the effect size of functional richness. The effect size indicates higher or lower functional richness than expected given the observed taxonomic richness (e.g., Harvey et al., 1983; Götzenberger et al., 2016). First, we focused on annual minimum temperature, as extreme temperatures limit metabolic activity, growth and constrain leaf size, and thus are likely to filter trait composition (Went, 1953). Second, we included annual precipitation, as drought constrains leaf longevity,

photosynthetic efficiency, and seed mass (Sandel et al., 2010). Last, we included annual temperature range and precipitation seasonality to be able to assess the influence of seasonality on plant diversity at the continental scale (Scheiner & Rey-Benayas, 1994; Godoy et al., 2009).

2 | METHODS

2.1 | Data collection and cleaning

2.1.1 | Vegetation plots

Plant community data (i.e., vegetation-plot records or relevés) were obtained from the European Vegetation Archive (EVA; Chytrý et al., 2016) on 2 March 2020. Relevés were classified by the expert system EUNIS-ESy to the habitat types of EUNIS (European Nature Information System) Habitat Classification (Chytrý et al., 2020). All grassland habitats (EUNIS group R) and coastal dune habitats (EUNIS habitats N15, N16 and N17) were selected. Plots not classified to any of these habitat types but assigned in the EVA database to the phytosociological class *Molinio-Arrhenatheretea* (Mucina et al., 2016) were added to the data set.

Data covered the whole of Europe. The islands of Macaronesia were excluded to remove any effects of isolated oceanic islands with significant within-island speciation and endemism (Humphries, 1979). We selected plots recorded between 1979 and 2013 to create an optimal match with climatic data. In addition, we selected plots with a georeferencing uncertainty smaller than 1 km, which further improved the match with high-resolution climatic data. Such a direct link between plant community and climate data reduces the effects of confounding factors like habitat heterogeneity (Szilágyi & Meszéna, 2009). We only included flowering plants as the available traits for this group are consistent within the data set. By doing so, we excluded ferns, bryophytes, lichens and fungi.

These selection criteria resulted in a georeferenced occurrence data set with presences of all selected plant species in all selected plots. From this initial data set, we excluded plots with particular ecological conditions (Münkemüller et al., 2020) using the following criteria: (a) plots influenced by high salinity, identified by the presence of species known to favor extreme salty conditions (e.g., *Suaeda maritima*) were excluded, as their composition is likely driven by salinity rather than temperature or precipitation; and (b) plots with a cover of tree or tall shrub species, identified as all plant species with an average height of more than 3 m (obtained from the TRY database, see below), that exceeded 5% in cover. All sources of vegetation-plot data are listed in Appendix S1.

2.1.2 | Trait data

We obtained trait data from the TRY database version 5 (Kattge et al., 2020), containing both public and restricted data sets. We retrieved

root trait data from the Fine-Root Ecology Database (FRED; Iversen et al., 2018). All data sources are listed in Appendix S2. After standardization of trait units, we merged trait data from the two databases and calculated species averages. While averaging excludes intraspecific trait variation and trait plasticity, which determines a large part of community diversity (Albert et al., 2010; Jung et al., 2010; Ross et al., 2017; Barbour et al., 2019; Niu et al., 2020), this step was necessary as trait data were not available for most species across the different plots.

Functional richness depends on the selected set of traits. We used a sequence of selection criteria leading to our final trait data set. First, we selected traits based on their importance for vegetative growth and reproduction (Wright et al., 2004; Díaz et al., 2016). Then, we selected both above- and below-ground traits with good data coverage. Third, we removed traits of the same plant organ with high covariance (e.g., specific leaf area and leaf dry matter content) in order to equalize organ and trait importance in the functional diversity calculation, keeping the trait with the highest data coverage. Fourth, we selected numeric traits only to minimize the effects of dimension choice to calculate functional diversity (Maire et al., 2015). Our final trait data set contains six plant traits (Table 1).

As functional richness calculations (see below) are sensitive to the completeness of the species list per plot (Pakeman, 2014) and thus require a complete trait data set, we filled the gaps (14.7% of overall missing data) in our trait database (Table 1; Appendix S3). Imputing missing data is considered a better alternative to removing incomplete plots, which can potentially result in systematic biases (Nakagawa & Freckleton, 2008). We used the *mice* function of the *mice* package in R-3.6.1, which relies on between-trait correlations using multi-variate imputation with chained equations to fill gaps. This method has been shown to have lower imputation error and bias compared to other multiple imputation approaches, especially when the percentage of missing data is high (Penone et al., 2014). Although gap-filling techniques require only one trait value

per species, we only retained species with at least two trait values to achieve a more accurate imputation. This resulted in the removal of complete relevés if the trait values for at least one species in the community did not meet this requirement. This resulted in the data set having 61,714 relevés containing a total of 2,884 species. Prior to the imputation, we log-transformed all trait data since some approaches could be sensitive to data with varying scales in the variables (Penone et al., 2014). Then, we used the predictive mean matching method for the imputation of all traits to preserve non-linear trait-trait relationships. We ran 24 multiple imputations (van Buuren, 2012) where trait predictions were updated five times in the chained equations to improve the quality of the predictions. Because multiple imputation performance benefits from the addition of other traits that may be related to those of interest, we also included plant longevity (categorical trait), as this trait was complete at the genus level. The gap-filling step resulted in 24 trait data sets, where the variation between them represents the uncertainty of the gap-filling technique. Qualitatively consistent results from different imputed data sets indicate that the conclusions on the directionality of the effects are not influenced by the gap-filling procedure.

2.1.3 | Climate data

We constructed four environmental gradients. The first was daily average minimum temperature (°C) of the coldest month of the year and the second was annual precipitation (mm). For both, environments were assumed to be harsher at the low end of the gradient (Went, 1953). Third, we considered precipitation seasonality (%), defined as the coefficient of variation based on monthly precipitation. Fourth, we considered annual temperature range (°C), defined as the absolute difference between the daily average maximum temperature of the warmest month and the daily average minimum

TABLE 1 List of functional plant traits used. Missing data for species represent the percentage of species that have no data for that trait. Missing data overall represent the percentage of gaps in the overall data set for that trait

Trait	Unit	Description ^a	Related function	Missing data (%)	
				Species	Overall
Specific leaf area	mm ² mg ⁻¹	One-sided area of a fresh leaf divided by its oven-dried mass	Photosynthetic rate, drought tolerance	16.4	1.2
Leaf nitrogen concentration	mg g ⁻¹	Total amount of nitrogen per unit of dry leaf mass	Photosynthetic rate, stress tolerance	46.9	13.3
Plant height	m	Shortest distance between the upper boundary of the main photosynthetic tissues on a plant and the ground level	Light capture, above-ground competition, dispersal distance	3.0	0.7
Seed mass	g	Oven-dried mass of an average seed of a species	Dispersal distance, seedling competition	12.8	1.7
Specific root length	mm mg ⁻¹	Ratio of root length to dry mass of fine roots	Resource uptake, stress tolerance	85.3	35.3
Rooting depth	m	Maximum soil depth from which resources can be acquired	Resource uptake, drought tolerance	76.1	35.9

^aStandardized definition from Pérez-Harguindeguy et al. (2013).

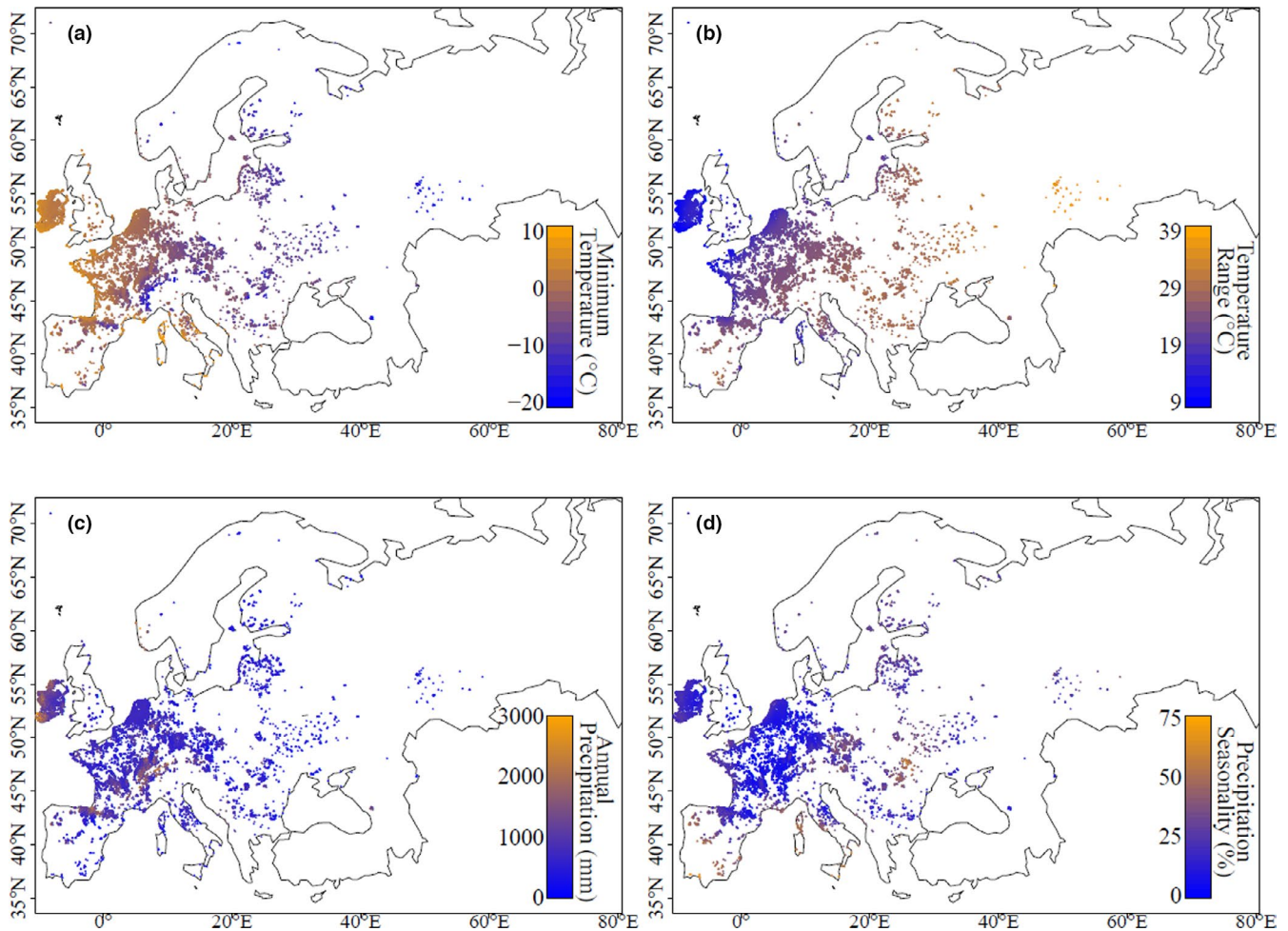


FIGURE 1 Geographic distribution of vegetation plots used in this study. Colours represent the minimum temperature (a) and annual temperature range (b) of each plot in °C, as well as the annual precipitation in mm (c) and precipitation seasonality in percentages (d). The environmental distribution of all locations is plotted in Appendix S4

temperature of the coldest month of the year. Other climatic variables were also used in this study as additional information (daily average warmest temperature of the warmest month [°C], mean temperature in the warmest quarter of the year [°C], mean temperature in the coldest quarter of the year [°C], annual mean temperature [°C], temperature seasonality). All climatic data were downloaded from CHELSA version 1.2 at a resolution of 0.01 degree (~1 km grid cells; Karger et al., 2017).

2.2 | Diversity

We used two diversity metrics, taxonomic richness and multi-variate functional richness. Taxonomic richness quantifies the number of species present in a community or sampling plot, while functional richness expresses the minimum volume encompassing the most extreme trait values in an assemblage and is a commonly used metric to quantify changes in assembly processes along environmental gradients (Mason & de Bello, 2013; Kraft et al., 2015; Münkemüller et al., 2020). These metrics suit the goals of describing plant diversity

along environmental gradients. To calculate functional richness, we first created a species-specific trait distance matrix based on scaled values of the six selected traits and using multi-variate Euclidean distances without trait weighting. Second, we performed a Principal Coordinate Analysis (PCoA) on the distance matrix. Third, we used the resulting coordinates of the PCoA to build a multi-variate trait spectrum of all traits within a plot. Each data point in the multi-variate trait spectrum describes the traits of a species, and the distances between points represent the similarity or diversification in traits between species. The global trait functional richness was computed as the smallest six-dimensional convex hull enclosing all trait values in an assemblage. For a specific plot, the functional richness is quantified as the volume of the convex hull that encloses all species of that individual plot (Villéger et al., 2008; Moullot et al., 2013).

In this functional richness calculation method, selecting the number of axes resulting from the PCoA was a trade-off. This calculation needs a higher number of species per plot than the number of included PCoA axes and thus convex hull dimensions. We chose to include all six axes to avoid excluding any trait variation. The removal of plots with six or fewer species did not create any bias as a low

number of species per plot occurred along the entire environmental gradient and followed the same pattern as plots with more than six species (Appendix S4). Removing these communities resulted in 24 final data sets, each with 55,748 plots and 2,830 different species (Figure 1).

2.3 | Null model

We used a null model to test for potential effects of taxonomic richness on functional richness, revealing non-random patterns that indicate ecological processes as opposed to random patterns expected by chance (Gotelli & Graves, 1996; Swenson et al., 2012; Chalmandrier et al., 2013). Hence, we calculated a functional richness effect size using results from a null model which randomly shuffles species trait values in the trait data set but retains species' trait combinations. Specifically, the species' PCoA scores were randomly shuffled among species (but not within species) from the entire species pool (de Bello et al., 2012). The number of species per community was kept equal to the number of species observed to ensure the assessment of functional richness trends, independent of differences in taxonomic richness (similarly to Swenson et al., 2012; Craven et al., 2018).

The effect sizes were calculated using probabilities since the distribution of the null model was not symmetric (Appendix S5; Ulrich & Gotelli, 2010; Bernard-Verdier et al., 2012; Lhotsky et al., 2016). We used the probitlink function (Φ^{-1}) of the VGAM package:

$$ES = \Phi^{-1}(p) \quad (1)$$

where

$$p = \frac{\text{number}(\text{NULL} < \text{obs}) + \frac{\text{number}(\text{NULL} = \text{obs})}{2}}{1,000} \quad (2)$$

Here, we estimated the one-tailed probability of the observed functional richness (obs) having a lower value than expected compared to the functional richness values resulting from the null model with 1,000 iterations (NULL) (Equation 2). When effect size calculations result in values close to zero (i.e., obs is close to the median of the null distribution), functional diversity is not different from the null expectation of no filtering of plant traits. Larger deviations of effect size values from zero indicate larger differences between observed and expected (by chance, i.e., without any plant trait community assembly processes) functional richness. Since we randomized trait values across species, negative effect size values indicate less variation in trait range than would be expected based on the number of species in the community, i.e., functional convergence or functional underdispersion (clustering). Positive effect size values indicate more variation in trait range than would be expected based on the number of species in the community, i.e., functional divergence or functional overdispersion (Bernard-Verdier et al., 2012; Swenson et al., 2012; Lhotsky et al., 2016).

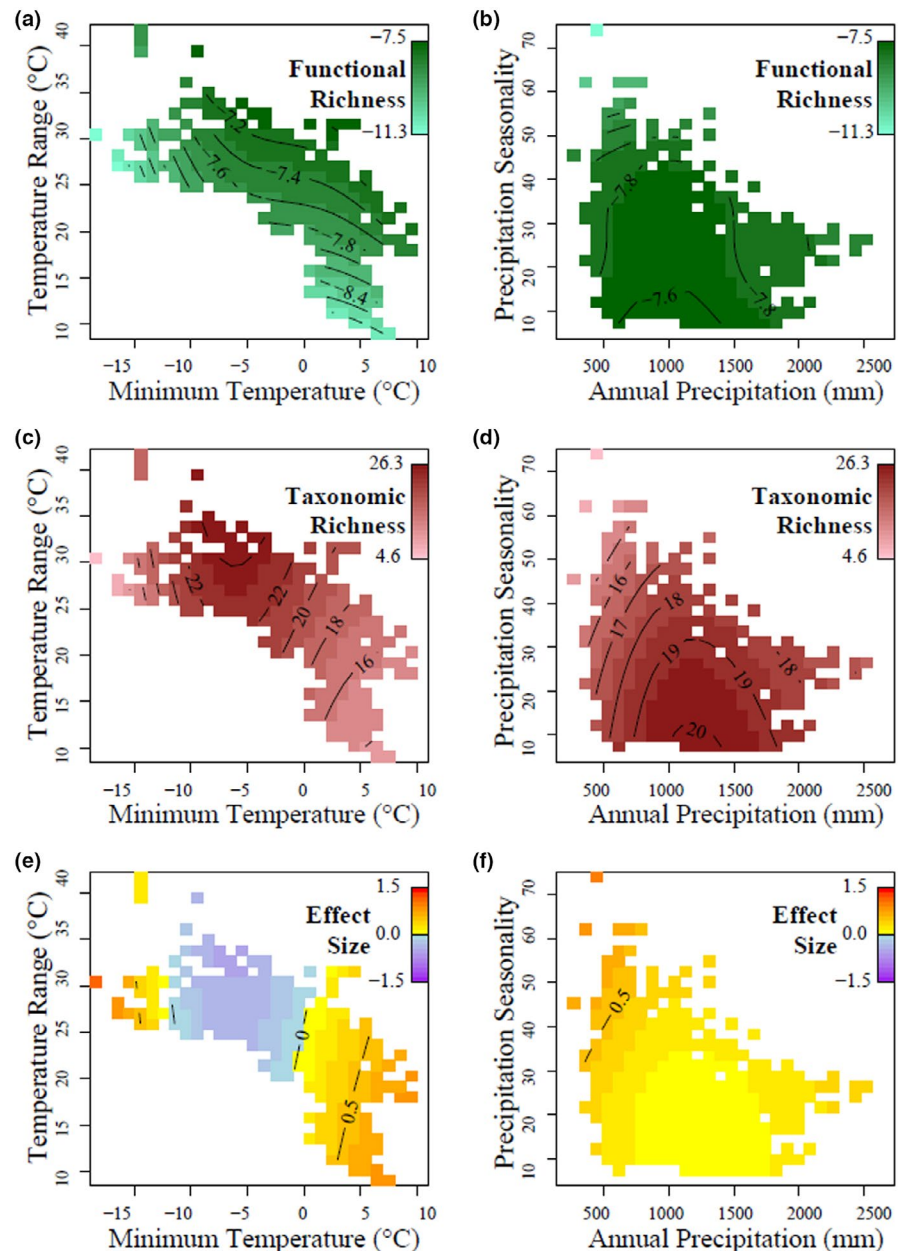
2.4 | Statistical analyses

We used the average of the original functional richness values and effect size values in one grid cell ($\sim 1 \text{ km}^2$) if more than one plot was sampled to reduce possible effects of spatial autocorrelation. This resulted in 19,179 data points and grid cells (Figure 1). For each of the 24 imputed data sets, functional richness, taxonomic richness, and effect sizes were assessed along gradients of minimum temperature, temperature range, annual precipitation and precipitation seasonality in multiple generalized additive models with a Gaussian distribution using the *gam4* package. These models allowed for finding patterns in the data without a priori hypotheses on the shape of the relationship. However, we restricted the curviness of the trends by setting the knots (k) to 4 to prevent overfitting. Since the difference between the models was small (Appendix S6), we averaged the trait data over the 24 imputed data sets, recalculated functional richness values, reran the null model, and used these data in our plots of functional richness and effect sizes so that confidence intervals could indicate model uncertainty instead of differences between imputed data sets.

3 | RESULTS

The diversity of grassland communities varied considerably over temperature and precipitation gradients (Figure 2; Appendix S7). We found functional and taxonomic richness to be lower in areas with low minimum temperatures and in areas with narrow temperature ranges (Figure 2a,c). These corresponded to locations in mountain ranges or with higher latitude or longitude and locations on islands or along the west coast of France, Belgium and the Netherlands, respectively (Appendix S9). This similarity in trend between functional and taxonomic richness may be due to a substantial correlation ($r = 0.7$; Appendix S8). However, at wide annual temperature ranges, functional richness increased with increasing minimum temperatures (Figure 2a), while taxonomic richness decreased with increasing minimum temperatures after reaching an optimum at a minimum temperature of around $-5 \text{ }^\circ\text{C}$ (Figure 2c). These plots were located in continental Europe, where the highest minimum temperatures (i.e., highest functional richness values) were found along the coasts of southern Europe (Appendix S9). Note that for all temperature variables (annual maximum, maximum of the warmest quarter, annual minimum, minimum of the coldest quarter, and annual mean temperature), both richness metrics showed the same non-linear pattern as for the minimum temperature (Appendix S10). Likewise, temperature variation variables (annual temperature range and temperature seasonality) showed the same non-linear pattern (Appendix S10). Considering the variation of functional and taxonomic richness across precipitation gradients, we found a decrease in richness with increasing precipitation seasonality (Figure 2b, d; Appendix S9). In addition, functional and taxonomic richness appeared to have an optimum at average values of annual precipitation,

FIGURE 2 Heat maps depicting fitted results of three multiple generalized additive models. Values for functional richness (a + b) indicate the logarithm of the original values, while values for taxonomic richness (c + d) and effect sizes of functional richness (e + f) represent the original values. In panels (a–d), lighter colours indicate lower functional richness values and darker colours indicate higher functional or taxonomic richness values. In panels (e) and (f), yellow to red colours are positive effect sizes, and blue to purple colours are negative effect sizes. White spaces are locations without data and/or represent combinations of climatic variables that do not exist anywhere in Europe



though the variation in functional richness across this gradient was small (Figure 2b, d). Overall, temperature could explain more of the variation in functional and taxonomic richness than precipitation (Appendix S11).

Assessing the variation in trait diversity while controlling for the number of species in the assemblage, functional richness effect sizes showed an opposite trend from functional and taxonomic richness along all environmental gradients (Figure 2e, f). Effect size values were positive when minimum temperatures dropped below -11°C or exceeded -1°C , representing sampled grasslands in the Alps, Russia and Scandinavia, and in south-western Europe respectively (Appendix S9). Larger effect sizes were found in locations with extremely low minimum temperature and at low annual precipitation with extreme precipitation seasonality. Slightly negative effect size values were found at

intermediate minimum temperatures, where sampled grasslands are mostly located in central Europe (Figure 2e; Appendix S9). In contrast, effect sizes did not show a clear pattern along the temperature range gradient (Figure 2e), nor did they vary much across both precipitation gradients (Figure 2f).

4 | DISCUSSION

The results of our continental-scale study show that European grassland communities vary substantially in functional and taxonomic richness along temperature and precipitation gradients. Highest richness in both traits and species was found in communities experiencing favorable, intermediate to warm climates. These locations contain more species with trait combinations that show

greater functional variation compared to other locations. This pattern is expected under the favorability hypothesis of lower diversity in harsh (low minimum temperatures and less precipitation) environments and higher diversity in more benign (warmer and more frequent precipitation) environments (Fischer, 1960). Additionally, this pattern is in line with taxonomic and functional diversity patterns found in non-European grasslands (Moradi & Oldeland, 2019). Note that Moradi & Oldeland (2019) reported that precipitation limits plant diversity more than minimum temperature in dry areas, which contrasts with our results (Appendix S11). This may suggest that, when drier areas would have been included in this study, taxonomic richness may decrease more toward more water-limited sites and determine the diversity patterns more than temperature. Another explanation of the peak in functional and taxonomic richness at average minimum temperature values is the mid-domain effect (Colwell & Hurtt, 1994; Colwell & Lees, 2000). Here, the geometric limits in relation to the distribution of species increases the overlap of species ranges and thus of species richness in the middle of the gradient (Colwell & Lees, 2000). We assume this effect to be of minor importance as grasslands extend from southwestern Europe to Middle and Central Asia, many grassland species have large geographical ranges (extending beyond the area included in this analysis), and many included species also occur in other habitats besides grasslands.

Remarkably, functional richness values further increased toward higher minimum temperatures and wider temperature ranges, while taxonomic richness decreased. Environments with a wide temperature range may hold co-existing species with dissimilar trait values as they can exploit different temporal niches, thereby dominating in different seasons without outcompeting the other species (Figure 2e; Díaz et al., 1999). This may explain the positive effect sizes at high minimum temperatures and wide temperature ranges (Scheiner & Rey-Benayas, 1994; González-Moreno et al., 2015). Nevertheless, such a hypothesis should be investigated further by inspecting variation in species abundance in a community over time (Tilman, 1996; Pescador et al., 2015). Further note that due to the disregard of intraspecific variation in this study, we potentially overestimate functional richness in environmentally constricted areas as adaptive traits may be more similar between species in these locations due to environmental filtering under the favorability hypothesis (Grant & Abbott, 1980; Swenson & Enquist, 2009; Swenson et al., 2012). Conversely, we may underestimate functional richness in other areas as adaptive traits may be more dissimilar between species under the principle of limiting similarity (Weiher & Keddy, 1995; Stubbs & Wilson, 2004; Mason & Wilson, 2006; Violle et al., 2011). Future field campaigns might invest in local trait measurements for all species to enable the inclusion of intraspecific trait variation (Albert et al., 2010; Niu et al., 2020).

Functional and taxonomic richness decreased toward higher minimum temperatures and narrow temperature ranges. Under the stress gradient hypothesis, the reduced diversity may indicate strong competition due to a benign, warm climate (Bertness & Callaway, 1994). However, temperature range is known to affect functional richness (González-Moreno et al., 2015) and might act as a stressor in

these locations explaining the reduction in functional and taxonomic diversity under the favorability hypothesis. Since positive effect sizes were found in these environments, it could be a more stressful environment where facilitation possibly causes trait divergence. This may follow the same explanation for the trait divergence found at extreme low minimum temperatures. In addition, facilitation was also observed in an alpine study where greater variation in temperature made for more stressful environments (Molenda et al., 2012). Nevertheless, these opposite effects may suggest that the locations with high minimum temperatures and narrow temperature ranges might be restricted by additional stressors that were not included in this study, like summer temperatures, wind, solar radiation, or even different herbivory levels. Experiments are required to disentangle the causal mechanisms underlying the functional and taxonomic richness patterns. They may also determine if and which environmental factors determine the diversity in these European grasslands, but our results indicate the importance of climate seasonality.

Interpreting patterns in community diversity along climatic gradients is difficult, particularly because the variation in our data explained by the temperature and precipitation variables was relatively low (8–10%; Appendix S10). Results should be interpreted with caution and experiments are required to back up possible explanations of diversity patterns. The low explained variation indicates that other factors beside climate vary between locations and play a large role in determining the plant diversity of European grassland communities, such as variation in soil, herbivory, management, landscape history and various biogeographical influences (e.g., Willems, 1983; Bakker et al., 2006; Dainese et al., 2015). It should also be emphasized that functional diversity is always dependent on the traits that are included in the study, where results may change when different traits are selected (Villéger et al., 2008). This means that the conclusions regarding functional richness trends in this study depend on the specific set of traits we selected. Future research could benefit from the ever-growing availability of trait data (Kattge et al., 2020) and vegetation-plot data from other ecosystems (Bruehlheide et al., 2019) to assess the generality of plant community diversity patterns along environmental gradients and to assess how community assembly may change in response to global warming (Mouillot et al., 2007; Mason et al., 2011; Catford et al., 2020).

ACKNOWLEDGEMENTS

The study was supported by the TRY initiative on plant traits (<http://www.try-db.org>) and the European Vegetation Archive (EVA; <http://euroveg.org/eva-database>). The TRY initiative and database are hosted, developed and maintained by Jens Kattge and Gerhard Bönisch (Max Planck Institute for Biogeochemistry, Jena, Germany). TRY is currently supported by DIVERSITAS/Future Earth and the German Centre for Integrative Biodiversity Research (iDiv) Halle–Jena–Leipzig. EVA is a database of the Working Group European Vegetation Survey of the International Association for Vegetation Science. We thank Sergei N. Sheremet'ev for the contribution of The Global Leaf Traits data set to TRY and Ilona Knollová for technical assistance with the EVA data.

AUTHOR CONTRIBUTIONS

CCFB conceived the research idea, with significant contributions of LS, BJMR and MAJH; CCFB gathered data and performed the analyses. CCFB wrote the manuscript with major contributions from LS, BJMR, SH, MC and MAJH; all authors commented on the manuscript.

DATA AVAILABILITY STATEMENT

The functional richness data and R scripts on the randomization and null model are available via DANS-EASY. The original trait data can be requested via TRY. Vegetation-plot data set used in this project is stored in the European Vegetation Archive under project no. 97.

ORCID

Coline C. F. Boonman  <https://orcid.org/0000-0003-2417-1579>

Luca Santini  <https://orcid.org/0000-0002-5418-3688>

Bjorn J. M. Robroek  <https://orcid.org/0000-0002-6714-0652>

Selwyn Hoeks  <https://orcid.org/0000-0001-5619-3233>

Jürgen Dengler  <https://orcid.org/0000-0003-3221-660X>

Ariel Bergamini  <https://orcid.org/0000-0001-8816-1420>

Idoia Biurrun  <https://orcid.org/0000-0002-1454-0433>

Maria Laura Carranza  <https://orcid.org/0000-0001-5753-890X>

Bruno E. L. Cerabolini  <https://orcid.org/0000-0002-3793-0733>

Milan Chytrý  <https://orcid.org/0000-0002-8122-3075>

Ute Jandt  <https://orcid.org/0000-0002-3177-3669>

Tatiana Lysenko  <https://orcid.org/0000-0001-6688-1590>

Angela Stanisci  <https://orcid.org/0000-0002-5302-0932>

Irina Tatarenko  <https://orcid.org/0000-0001-6835-2465>

Solvita Rūsiņa  <https://orcid.org/0000-0002-9580-4110>

Mark A. J. Huijbregts  <https://orcid.org/0000-0002-7037-680X>

REFERENCES

- Albert, C.H., Thuiller, W., Yoccoz, N.G., Soudant, A., Boucher, F., Saccone, P. et al. (2010) Intraspecific functional variability: extent, structure and sources of variation. *Journal of Ecology*, 98, 604–613. <https://doi.org/10.1111/j.1365-2745.2010.01651.x>
- Bakker, E.S., Ritchie, M.E., Olf, H., Milchunas, D.G. & Knops, J.M.H. (2006) Herbivore impact on grassland plant diversity depends on habitat productivity and herbivore size. *Ecology Letters*, 9, 780–788. <https://doi.org/10.1111/j.1461-0248.2006.00925.x>
- Barbour, M.A., Erlandson, S., Peay, K., Locke, B., Jules, E.S. & Crutsinger, G.M. (2019) Trait plasticity is more important than genetic variation in determining species richness of associated communities. *Journal of Ecology*, 107, 350–360. <https://doi.org/10.1111/1365-2745.13014>
- Bernard-Verdier, M., Navas, M.-L., Vellend, M., Violle, C., Fayolle, A. & Garnier, E. (2012) Community assembly along a soil depth gradient: contrasting patterns of plant trait convergence and divergence in a Mediterranean rangeland. *Journal of Ecology*, 100, 1422–1433. <https://doi.org/10.1111/1365-2745.12003>
- Bertness, M.D. & Callaway, R. (1994) Positive interactions in communities. *Trends in Ecology & Evolution*, 9, 191–193.
- Breitschwerdt, E., Jandt, U. & Bruelheide, H. (2018) Using co-occurrence information and trait composition to understand individual plant performance in grassland communities. *Scientific Reports*, 8, 9076. <https://doi.org/10.1038/s41598-018-27017-9>
- Brooker, R.W. & Callaghan, F.V. (1998) The balance between positive and negative interactions and its relationship to environmental gradients: a model. *Oikos*, 81, 196–201.
- Bruelheide, H., Dengler, J., Jiménez-Alfaro, B., Purschke, O., Hennekens, S.M., Chytrý, M. et al. (2019) sPlot – A new tool for global vegetation analyses. *Journal of Vegetation Science*, 30, 161–186. <https://doi.org/10.1111/jvs.12710>
- Cadotte, M.W. & Tucker, C.M. (2017) Should environmental filtering be abandoned? *Trends in Ecology & Evolution*, 32(6), 429–437. <https://doi.org/10.1016/j.tree.2017.03.004>
- Cardinale, B.J., Duffy, E., Gonzalez, A., Hooper, D.U., Perrings, C., Venail, P. et al. (2012) Biodiversity loss and its impact on humanity. *Nature*, 486(7401), 59–67. <https://doi.org/10.1038/nature11148>
- Carmona, C.P., Azcárate, F.M., de Bello, F., Ollero, H.S., Lepš, J. & Peco, B. (2012) Taxonomical and functional diversity turnover in Mediterranean grasslands: interactions between grazing, habitat type and rainfall. *Journal of Applied Ecology*, 49, 1084–1093. <https://doi.org/10.1111/j.1365-2664.2012.02193.x>
- Catford, J.A., Dwyer, J.M., Palma, E., Cowles, J.M. & Tilman, D. (2020) Community diversity outweighs effect of warming on plant colonization. *Global Change Biology*, 26, 3079–3090. <https://doi.org/10.1111/gcb.15017>
- Chalmandrier, L., Münkemüller, T., Gallien, L., de Bello, F., Mazel, F., Lavergne, S. et al. (2013) A family of null models to distinguish between environmental filtering and biotic interactions in functional diversity patterns. *Journal of Vegetation Science*, 24, 853–864. <https://doi.org/10.1111/jvs.12031>
- Chytrý, M., Hennekens, S.M., Jiménez-Alfaro, B., Knollová, I., Dengler, J., Jansen, F. et al. (2016) European Vegetation Archive (EVA): an integrated database of European vegetation plots. *Applied Vegetation Science*, 19, 173–180. <https://doi.org/10.1111/avsc.12191>
- Chytrý, M., Tichý, L., Hennekens, S.M., Knollová, I., Janssen, J.A.M., Rodwell, J.S. et al. (2020) EUNIS Habitat Classification: expert system, characteristic species combinations and distribution maps of European habitats. *Applied Vegetation Science*, 23, 648–675. <https://doi.org/10.1111/avsc.12519>
- Colwell, R.K. & Hurr, G.C. (1994) Nonbiological gradients in species richness and a spurious Rapoport effect. *The American Naturalist*, 144(4), 570–595.
- Colwell, R.K. & Lees, D.C. (2000) The mid-domain effect: geometric constraints on the geography of species richness. *Trends in Ecology & Evolution*, 15(2), 70–76.
- Craven, D., Hall, J.S., Berlyn, G.P., Ashton, M.S. & van Breugel, M. (2018) Environmental filtering limits functional diversity during succession in a seasonally wet tropical secondary forest. *Journal of Vegetation Science*, 29, 511–520. <https://doi.org/10.1111/jvs.12632>
- Dainese, M., Lepš, J. & de Bello, F. (2015) Different effects of elevation, habitat fragmentation and grazing management on the functional, phylogenetic and taxonomic structure of mountain grasslands. *Perspectives in Plant Ecology, Evolution and Systematics*, 17, 44–53. <https://doi.org/10.1016/j.ppees.2014.09.002>
- de Bello, F., Price, J.N., Münkemüller, T., Liira, J., Zobel, M., Thuiller, W. et al. (2012) Functional species pool framework to test for biotic effects on community assembly. *Ecology*, 93, 2263–2273. <https://doi.org/10.1890/11-1394.1>
- de Bello, F., Thuiller, W., Lepš, J., Choler, P., Clément, J.-C., Macek, P. et al. (2009) Partitioning of functional diversity reveals the scale and extent of trait convergence and divergence. *Journal of Vegetation Science*, 20, 475–486. <https://doi.org/10.1111/j.1654-1103.2009.01042.x>
- Dengler, J., Biurrun, I., Boch, S., Dembic, I. & Török, P. (2020) Grasslands of the Palaearctic biogeographic realm: introduction and synthesis. In: Goldstein, M.I., DellaSala, D.A. & DiPaolo, D.A. (Eds.) *Encyclopedia of the World's Biomes. Volume 3: Forests – Trees of Life. Grasslands and Shrublands – Sea of Plants*. Amsterdam, NL: Elsevier, pp. 617–637.

- Díaz, S. & Cabido, M. (1997) Plant functional types and ecosystem function in relation to global change. *Journal of Vegetation Science*, 8, 463–474. <https://doi.org/10.2307/3237198>
- Díaz, S., Cabido, M. & Casanoves, F. (1999) Functional implications of trait-environment linkages in plant communities. In: Weiher, E. & Keddy, P.A. (Eds.) *Ecological Assembly Rules: Perspectives, Advances, Retreats*. Cambridge: Cambridge University Press, pp. 338–362.
- Díaz, S. & Cabido, M. (2001) Vive la difference: Plant functional diversity matters to ecosystem processes. *Trends in Ecology and Evolution*, 16, 646–655. [https://doi.org/10.1016/S0169-5347\(01\)02283-2](https://doi.org/10.1016/S0169-5347(01)02283-2)
- Díaz, S., Kattge, J., Cornelissen, J.H.C., Wright, I.J., Lavorel, S., Dray, S. et al. (2016) The global spectrum of plant form and function. *Nature*, 529, 167–171. <https://doi.org/10.1038/nature16489>
- Fischer, A.G. (1960) Latitudinal variations in organic diversity. *Evolution*, 14, 64–81. <https://doi.org/10.2307/2405923>
- Fischer, F.M., Chytrý, K., Těšitel, J., Danihelka, J. & Chytrý, M. (2020) Weather fluctuations drive short-term dynamics and long-term stability in plant communities: a 25-year study in a Central European dry grassland. *Journal of Vegetation Science*, 31, 711–721. <https://doi.org/10.1111/jvs.12895>
- Funk, J.L., Larson, J.E., Ames, G.M., Butterfield, B.J., Cavender-Bares, J., Firn, J. et al. (2017) Revisiting the Holy Grail: Using plant functional traits to understand ecological processes. *Biological Reviews*, 92, 1156–1173. <https://doi.org/10.1111/brv.12275>
- Godoy, O., Castro-Díez, P., Valladares, F. & Costa-Tenorio, M. (2009) Different flowering phenology of alien invasive species in Spain: evidence for the use of an empty temporal niche? *Plant Biology*, 11, 803–811. <https://doi.org/10.1111/j.1438-8677.2008.00185.x>
- González-Moreno, P., Diez, J.M., Richardson, D.M. & Vilà, M. (2015) Beyond climate: disturbance niche shifts in invasive species. *Global Ecology and Biogeography*, 24, 360–370. <https://doi.org/10.1111/geb.12271>
- Gotelli, N.J. & Graves, G.R. (1996) *Null Models in Ecology*. Washington, DC: Smithsonian Institution Press.
- Götzenberger, L., Botta-Dukát, Z., Lepš, J., Pärtel, M., Zobel, M. & de Bello, F. (2016) Which randomizations detect convergence and divergence in trait-based community assembly? A test of commonly used null models. *Journal of Vegetation Science*, 27, 1275–1287. <https://doi.org/10.1111/jvs.12452>
- Grant, P. & Abbott, I. (1980) Interspecific competition, island biogeography and null hypotheses. *Evolution*, 34, 332–341. <https://doi.org/10.2307/2407397>
- Grime, J.P. (2006) Trait convergence and trait divergence in herbaceous plant communities: mechanisms and consequences. *Journal of Vegetation Science*, 17, 255–260. <https://doi.org/10.1111/j.1654-1103.2006.tb02444.x>
- Harvey, P.H., Colwell, R.K., Silvertown, J.W. & May, R.M. (1983) Null models in ecology. *Annual Review of Ecology and Systematics*, 14, 189–211.
- Hooper, D.U., Solan, M., Symbstad, A., Díaz, S., Gessner, M.O., Buchmann, N. et al. (2002) Species diversity, functional diversity and ecosystem functioning. In: Loreau, M., Naeem, S. & Inchausti, P. (Eds.) *Biodiversity and Ecosystem Functioning: Synthesis and Perspectives*. Oxford: Oxford University Press, pp. 195–208.
- Humphries, C. (1979) Endemism and evolution in Macaronesia. In: Bramwell, D. (Ed.) *Plants and Islands*. London: Academic Press, pp. 171–199.
- Iversen, C., Powell, A., McCormack, M., Blackwood, C., Freschet, G., Kattge, J. et al. (2018) *Fine-root Ecology Database (FRED): A Global Collection of Root Trait Data with Coincident Site, Vegetation, Edaphic, and Climatic Data, version 2.*, (tech. rep.) edition. Oak Ridge, TN: Oak Ridge National Lab. <https://doi.org/10.25581/ornlfsa.012/1417481>
- Jung, V., Violle, C., Mondy, C., Hoffmann, L. & Müller, S. (2010) Intraspecific variability and trait-based community assembly. *Journal of Ecology*, 98, 1134–1140. <https://doi.org/10.1111/j.1365-2745.2010.01687.x>
- Karger, D.N., Conrad, O., Böhner, J., Kawohl, T., Kreft, H., Soria-Auza, R.W. et al. (2017) Climatologies at high resolution for the earth's land surface areas. *Scientific Data*, 4, 170122. <https://doi.org/10.1038/sdata.2017.122>
- Kattge, J., Bönisch, G., Díaz, S., Lavorel, S., Prentice, I.C., Leadley, P. et al. (2020) TRY plant trait database – enhanced coverage and open access. *Global Change Biology*, 26, 119–188. <https://doi.org/10.1111/gcb.14904>
- Keddy, P. (1992) A pragmatic approach to functional ecology. *Functional Ecology*, 6, 621–626. <https://doi.org/10.2307/2389954>
- Kraft, N.J., Godoy, O. & Levine, J.M. (2015) Plant functional traits and the multidimensional nature of species coexistence. *Proceedings of the National Academy of Sciences of the United States of America*, 112, 797–802. <https://doi.org/10.1073/pnas.1413650112>
- Kunstler, G., Lavergne, S., Courbaud, B., Thuiller, W., Vieilledent, G., Zimmermann, N.E. et al. (2012) Competitive interactions between forest trees are driven by species' trait hierarchy, not phylogenetic or functional similarity: implications for forest community assembly. *Ecology Letters*, 15, 831–840. <https://doi.org/10.1111/j.1461-0248.2012.01803.x>
- Leibold, M.A., Holyoak, M., Mouquet, N., Amarasekare, P., Chase, J.M., Hoopes, M.F. et al. (2004) The metacommunity concept: a framework for multi-scale community ecology. *Ecology Letters*, 7, 601–613. <https://doi.org/10.1111/j.1461-0248.2004.00608.x>
- Lhotsky, B., Kovács, B., Ónodi, G., Csecserits, A., Rédei, T., Lengyel, A. et al. (2016) Changes in assembly rules along a stress gradient from open dry grasslands to wetlands. *Journal of Ecology*, 104, 507–517. <https://doi.org/10.1111/1365-2745.12532>
- MacArthur, R. & Levins, R. (1967) The limiting similarity, convergence, and divergence of coexisting species. *The American Naturalist*, 101, 377–385. <https://doi.org/10.1086/282505>
- Maire, E., Grenouillet, G., Brosse, S. & Villéger, S. (2015) How many dimensions are needed to accurately assess functional diversity? A pragmatic approach for assessing the quality of functional spaces. *Global Ecology and Biogeography*, 24, 728–740. <https://doi.org/10.1111/geb.12299>
- Mason, N.W., de Bello, F., Doležal, J. & Lepš, J. (2011) Niche overlap reveals the effects of competition, disturbance and contrasting assembly processes in experimental grassland communities. *Journal of Ecology*, 99, 788–796. <https://doi.org/10.1111/j.1365-2745.2011.01801.x>
- Mason, N.W. & de Bello, F. (2013) Functional diversity: a tool for answering challenging ecological questions. *Journal of Vegetation Science*, 24, 777–780. <https://doi.org/10.1111/jvs.12097>
- Mason, N.W. & Wilson, J.B. (2006) Mechanisms of species coexistence in a lawn community: mutual corroboration between two independent assembly rules. *Community Ecology*, 7, 109–116. <https://doi.org/10.1556/comec.7.2006.1.11>
- Mayfield, M.M. & Levine, J.M. (2010) Opposing effects of competitive exclusion on the phylogenetic structure of communities. *Ecology Letters*, 13, 1085–1093. <https://doi.org/10.1111/j.1461-0248.2010.01509.x>
- McGill, B.J., Enquist, B.J., Weiher, E. & Westoby, M. (2006) Rebuilding community ecology from functional traits. *Trends in Ecology & Evolution*, 21, 178–185. <https://doi.org/10.1016/j.tree.2006.02.002>
- McIntire, E.J. & Fajardo, A. (2014) Facilitation as a ubiquitous driver of biodiversity. *New Phytologist*, 201, 403–416. <https://doi.org/10.1111/nph.12478>
- Molenda, O., Reid, A. & Lortie, C.J. (2012) The alpine cushion plant *Silene acaulis* as foundation species: a bug's-eye view to facilitation and microclimate. *PLoS One*, 7, e37223. <https://doi.org/10.1371/journal.pone.0037223>
- Mooney, H., Larigauderie, A., Cesario, M., Elmquist, T., Hoegh-Guldberg, O., Lavorel, S. et al. (2009) Biodiversity, climate change, and ecosystem services. *Current Opinion in Environmental Sustainability*, 1(1), 46–54. <https://doi.org/10.1016/j.cosust.2009.07.006>

- Moradi, H. & Oldeland, J. (2019) Climatic stress drives plant functional diversity in the Alborz Mountains, Iran. *Ecological Research*, 34, 171–181. <https://doi.org/10.1111/1440-1703.1015>
- Mori, A.S., Forest, I. & Seidl, R. (2018) β -diversity, community assembly, and ecosystem functioning. *Trends in Ecology and Evolution*, 33, 549–564. <https://doi.org/10.1016/j.tree.2018.04.012>
- Moullot, D., Graham, N.A., Villéger, S., Mason, N.W. & Bellwood, D.R. (2013) A functional approach reveals community responses to disturbances. *Trends in Ecology & Evolution*, 28, 167–177. <https://doi.org/10.1016/j.tree.2012.10.004>
- Moullot, D., Mason, N.W. & Wilson, J.B. (2007) Is the abundance of species determined by their functional traits? A new method with a test using plant communities. *Oecologia*, 152, 729–737. <https://doi.org/10.1007/s00442-007-0688-0>
- Mucina, L., Bültmann, H., Dierßen, K., Theurillat, J.-P., Raus, T., Čarni, A. et al. (2016) Vegetation of Europe: hierarchical floristic classification system of vascular plant, bryophyte, lichen, and algal communities. *Applied Vegetation Science*, 19(Suppl.), 3–264. <https://doi.org/10.1111/avsc.12257>
- Münkemüller, T., Gallien, L., Pollock, L.J., Barros, C., Carboni, M., Chalmandrier, L. et al. (2020) Dos and don'ts when inferring assembly rules from diversity patterns. *Global Ecology and Biogeography*, 29, 1212–1229. <https://doi.org/10.1111/geb.13098>
- Nakagawa, S. & Freckleton, R.P. (2008) Missing in action: the dangers of ignoring missing data. *Trends in Ecology & Evolution*, 23, 592–596. <https://doi.org/10.1016/j.tree.2008.06.014>
- Niu, K., Zhang, S. & Lechowicz, M.J. (2020) Harsh environmental regimes increase the functional significance of intraspecific variation in plant communities. *Functional Ecology*, 34, 1666–1677. <https://doi.org/10.1111/1365-2435.13582>
- Nogueira, C., Nunes, A., Bugalho, M.N., Branquinho, C., McCulley, R.L. & Caldeira, M.C. (2018) Nutrient addition and drought interact to change the structure and decrease the functional diversity of a Mediterranean grassland. *Frontiers in Ecology and Evolution*, 6, 155. <https://doi.org/10.3389/fevo.2018.00155>
- Pakeman, R.J. (2014) Functional trait metrics are sensitive to the completeness of the species' trait data? *Methods in Ecology and Evolution*, 5, 9–15. <https://doi.org/10.1111/2041-210X.12136>
- Penone, C., Davidson, A.D., Shoemaker, K.T., Di Marco, M., Rondinini, C., Brooks, T.M. et al. (2014) Imputation of missing data in life-history trait datasets: which approach performs the best? *Methods in Ecology and Evolution*, 5, 961–970. <https://doi.org/10.1111/2041-210X.12232>
- Pérez-Harguindeguy, N., Díaz, S., Garnier, E., Lavorel, S., Poorter, H., Jaureguiberry, P. et al. (2013) New handbook for standardised measurement of plant functional traits worldwide. *Australian Journal of Botany*, 61, 167–234. <https://doi.org/10.1071/bt12225>
- Pescador, D.S., de Bello, F., Valladares, F. & Escudero, A. (2015) Plant trait variation along an altitudinal gradient in Mediterranean high mountain grasslands: controlling the species turnover effect. *PLoS One*, 10, e0118876. <https://doi.org/10.1371/journal.pone.0118876>
- Petchey, O.L. & Gaston, K.J. (2002) Functional diversity (FD), species richness and community composition. *Ecology Letters*, 5, 402–411. <https://doi.org/10.1046/j.1461-0248.2002.00339.x>
- Raymundo, D., Prado-Junior, J., Carvalho, F.A., do Vale, V.S., Oliveira, P.E. & van der Sande, M.T. (2018) Shifting species and functional diversity due to abrupt changes in water availability in tropical dry forests. *Journal of Ecology*, 107, 253–264. <https://doi.org/10.1111/1365-2745.13031>
- Ross, S.-R.-J., Hassall, C., Hoppitt, W.J., Edwards, F.A., Edwards, D.P. & Hamer, K.C. (2017) Incorporating intraspecific trait variation into functional diversity: impacts of selective logging on birds in Borneo. *Methods in Ecology and Evolution*, 8, 1499–1505. <https://doi.org/10.1111/2041-210X.12769>
- Sandel, B., Goldstein, L.J., Kraft, N.J., Okie, J.G., Shuldman, M.I., Ackerly, D.D. et al. (2010) Contrasting trait responses in plant communities to experimental and geographic variation in precipitation. *New Phytologist*, 188, 565–575. <https://doi.org/10.1111/j.1469-8137.2010.03382.x>
- Scheiner, S.M. & Rey-Benayas, J.M. (1994) Global patterns of plant diversity. *Evolutionary Ecology*, 8, 331–347. <https://doi.org/10.1007/bf01238186>
- Scholz, H. (1975) Grassland evolution in Europe. *Taxon*, 24, 81–90. <https://doi.org/10.2307/1219003>
- Shen, Y., Yu, S.-X., Lian, J.-Y., Shen, H., Cao, H.-L., Lu, H.-P. et al. (2016) Inferring community assembly processes from trait diversity across environmental gradients. *Journal of Tropical Ecology*, 32, 290–299. <https://doi.org/10.1017/S0266467416000262>
- Stubbs, W.J. & Wilson, J.B. (2004) Evidence for limiting similarity in a sand dune community. *Journal of Ecology*, 92, 557–567. <https://doi.org/10.1111/j.0022-0477.2004.00898.x>
- Swenson, N.G. & Enquist, B.J. (2009) Opposing assembly mechanisms in a neotropical dry forest: Implications for phylogenetic and functional community ecology. *Ecology*, 90, 2161–2170. <https://doi.org/10.1890/08-1025.1>
- Swenson, N.G., Enquist, B.J., Pither, J., Kerkhoff, A.J., Boyle, B., Weiser, M.D. et al. (2012) The biogeography and filtering of woody plant functional diversity in North and South America. *Global Ecology and Biogeography*, 21, 798–808. <https://doi.org/10.1111/j.1466-8238.2011.00727.x>
- Szilágyi, A. & Meszéna, G. (2009) Limiting similarity and niche theory for structured populations. *Journal of Theoretical Biology*, 258, 27–37. <https://doi.org/10.1016/j.jtbi.2008.12.001>
- Tilman, D. (1996) Biodiversity: population versus ecosystem stability. *Ecology*, 77, 350–363. <https://doi.org/10.2307/2265614>
- Tilman, D., Knops, J., Wedin, D., Reich, P., Ritchie, M. & Siemann, E. (1997) The influence of functional diversity and composition on ecosystem processes. *Science*, 277, 1300–1302. <https://doi.org/10.1126/science.277.5330.1300>
- Tilman, D., Reich, P. & Knops, J. (2006) Biodiversity and ecosystem stability in a decade-long grassland experiment. *Nature*, 441, 629–632. <https://doi.org/10.1038/nature04742>
- Tingley, R., Vallinoto, M., Sequeira, F. & Kearney, M.R. (2014) Realized niche shift during a global biological invasion. *Proceedings of the National Academy of Sciences of the United States of America*, 111, 10233–10238. <https://doi.org/10.1073/pnas.1405766111>
- Ulrich, W. & Gotelli, N.J. (2010) Null model analysis of species associations using abundance data. *Ecology*, 91, 3384–3397. <https://doi.org/10.1890/09-2157.1>
- Valiente-Banuet, A. & Verdú, M. (2007) Facilitation can increase the phylogenetic diversity of plant communities. *Ecology Letters*, 10, 1029–1036. <https://doi.org/10.1111/j.1461-0248.2007.01100.x>
- Van Buuren, S. (Ed.) (2012) *Flexible Imputation of Missing Data*. Boca Raton: CRC Press.
- Villéger, S., Mason, N.W. & Moullot, D. (2008) New multidimensional functional diversity indices for a multifaceted framework in functional ecology. *Ecology*, 89, 2290–2301. <https://doi.org/10.1890/07-1206.1>
- Violle, C., Nemerout, D.R., Pu, Z. & Jiang, L. (2011) Phylogenetic limiting similarity and competitive exclusion. *Ecology Letters*, 14, 782–787. <https://doi.org/10.1111/j.1461-0248.2011.01644.x>
- Weiher, E., Clarke, G.D.P. & Keddy, P.A. (1998) Community assembly rules, morphological dispersion, and the coexistence of plant species. *Oikos*, 81, 309–321. <https://doi.org/10.2307/3547051>
- Weiher, E., Freund, D., Bunton, T., Stefanski, A., Lee, T. & Bentivenga, S. (2011) Advances, challenges and a developing synthesis of ecological community assembly theory. *Philosophical Transactions of the Royal Society B: Biological Sciences*, 366, 2403–2413. <https://doi.org/10.1098/rstb.2011.0056>

- Weiher, E. & Keddy, P.A. (1995) Assembly rules, null models, and trait dispersion: new questions from old patterns. *Oikos*, 74, 159–164. <https://doi.org/10.2307/3545686>
- Went, F. (1953) The effect of temperature on plant growth. *Annual Review of Plant Physiology*, 4, 347–362.
- Wesche, K., Krause, B., Culmsee, H. & Leuschner, C. (2012) Fifty years of change in Central European grassland vegetation: Large losses in species richness and animal-pollinated plants. *Biological Conservation*, 150, 76–85. <https://doi.org/10.1016/j.biocon.2012.02.015>
- Willems, J.H. (1983) Species composition and above ground phytomass in chalk grassland with different management. *Vegetatio*, 52, 171–180. <https://doi.org/10.1007/BF00044994>
- Wilson, J.B., Peet, R.K., Dengler, J. & Pärtel, M. (2012) Plant species richness: the world records. *Journal of Vegetation Science*, 23, 796–802. <https://doi.org/10.1111/j.1654-1103.2012.01400.x>
- Wright, I.J., Reich, P.B., Westoby, M., Ackerly, D.D., Baruch, Z., Bongers, F. *et al.* (2004) The worldwide leaf economics spectrum. *Nature*, 428, 821–827. <https://doi.org/10.1038/nature02403>

SUPPORTING INFORMATION

Additional supporting information may be found online in the Supporting Information section.

Appendix S1. EVA data sources

Appendix S2. Trait data sources

Appendix S3. Missing data handling

Appendix S4. Functional richness calculation trade-off

Appendix S5. Null model skewness

Appendix S6. Model results with different data sets

Appendix S7. Spatial distribution of functional richness, taxonomic richness and effect sizes

Appendix S8. Species and functional richness relationship

Appendix S9. Plot locations with specific environments

Appendix S10. Diversity along different temperature gradients

Appendix S11. Model results

How to cite this article: Boonman CCF, Santini L, Robroek BJM, et al. Plant functional and taxonomic diversity in European grasslands along climatic gradients. *J Veg Sci.* 2021;32:e13027. <https://doi.org/10.1111/jvs.13027>