



UNIVERSIDADE ESTADUAL DE CAMPINAS
SISTEMA DE BIBLIOTECAS DA UNICAMP
REPOSITÓRIO DA PRODUÇÃO CIENTÍFICA E INTELLECTUAL DA UNICAMP

Versão do arquivo anexado / Version of attached file:

Versão do Editor / Published Version

Mais informações no site da editora / Further information on publisher's website:

<https://academic.oup.com/aobpla/article/doi/10.1093/aobpla/plu088/198508>

DOI: 10.1093/aobpla/plu088

Direitos autorais / Publisher's copyright statement:

©2015 by nan. All rights reserved.

DIRETORIA DE TRATAMENTO DA INFORMAÇÃO

Cidade Universitária Zeferino Vaz Barão Geraldo

CEP 13083-970 – Campinas SP

Fone: (19) 3521-6493

<http://www.repositorio.unicamp.br>



Research Article

Trichomes related to an unusual method of water retention and protection of the stem apex in an arid zone perennial species

Makeli Garibotti Lusa^{1,2}, Elaine Cristina Cardoso¹, Silvia Rodrigues Machado³
and Beatriz Appezzato-da-Glória^{1*}

¹ Departamento de Ciências Biológicas, Escola Superior de Agricultura 'Luiz de Queiroz', Universidade de São Paulo, Piracicaba, São Paulo 13418-900, Brazil

² Programa de Pós-graduação em Biologia Vegetal, Instituto de Biologia, Universidade Estadual de Campinas, CP 6109, Campinas, São Paulo 13083-970, Brazil

³ Departamento de Botânica, Instituto de Biociências, Universidade Estadual Paulista, Botucatu, São Paulo 18618-000, Brazil

Received: 29 July 2014; **Accepted:** 26 November 2014; **Published:** 19 December 2014

Associate Editor: John Runions

Citation: Lusa MG, Cardoso EC, Machado SR, Appezzato-da-Glória B. 2015. Trichomes related to an unusual method of water retention and protection of the stem apex in an arid zone perennial species. *AoB PLANTS* 7: plu088; doi:10.1093/aobpla/plu088

Abstract. It is well known that trichomes protect plant organs, and several studies have investigated their role in the adaptation of plants to harsh environments. Recent studies have shown that the production of hydrophilic substances by glandular trichomes and the deposition of this secretion on young organs may facilitate water retention, thus preventing desiccation and favouring organ growth until the plant develops other protective mechanisms. *Lychnophora diamantinana* is a species endemic to the Brazilian 'campos rupestres' (rocky fields), a region characterized by intense solar radiation and water deficits. This study sought to investigate trichomes and the origin of the substances observed on the stem apices of *L. diamantinana*. Samples of stem apices, young and expanded leaves were studied using standard techniques, including light microscopy and scanning and transmission electron microscopy. Histochemical tests were used to identify the major groups of metabolites present in the trichomes and the hyaline material deposited on the apices. Non-glandular trichomes and glandular trichomes were observed. The material deposited on the stem apices was hyaline, highly hydrophilic and viscous. This hyaline material primarily consists of carbohydrates that result from the partial degradation of the cell wall of uniseriate trichomes. This degradation occurs at the same time that glandular trichomes secrete terpenoids, phenolic compounds and proteins. These results suggest that the non-glandular trichomes on the leaves of *L. diamantinana* help protect the young organ, particularly against desiccation, by deposition of highly hydrated substances on the apices. Furthermore, the secretion of glandular trichomes probably repels herbivore and pathogen attacks.

Keywords: Asteraceae; cell-wall degradation; dehydration protection; glandular trichomes; histochemistry; non-glandular trichomes.

* Corresponding author's e-mail address: bagloria@usp.br

Published by Oxford University Press on behalf of the Annals of Botany Company.

This is an Open Access article distributed under the terms of the Creative Commons Attribution License (<http://creativecommons.org/licenses/by/4.0/>), which permits unrestricted reuse, distribution, and reproduction in any medium, provided the original work is properly cited.

Introduction

In nature, the trichomes can exhibit an enormous diversity in relation to the morphology, origin, size, location, timing of activity and function; often the trichomes are distinguished as glandular and non-glandular, according to their functions, mainly the capability to secrete (Werker 2000). It is well known that trichomes protect plant organs, and several studies have investigated their role in the adaptation of plants to harsh environments (Fahn 1979; Werker 2000). In the stem apices, the trichomes are commonly related to the protection of the young organs: the glandular trichomes release repellent compounds against herbivores and pathogens (Werker 2000; Siebert 2004; Göpfert et al. 2005; Machado et al. 2006) or also produce hydrophilic substances related to protection against desiccation (Bruni et al. 1987; Fahn 1990; Paiva and Martins 2011); and non-glandular trichome acting as a mechanical barrier against excessive light, water loss and extreme temperatures (Fahn and Cutler 1992; Turner 1994; Werker 2000).

Traditionally, colleters are secretory structures (emergences or glandular trichomes) more known by production of substances hydrophilic (mucilaginous or resinous), usually found on young organs (Fahn 1990; Paiva and Machado 2006; Evert 2007; Paiva 2009). Recent studies (Mayer et al. 2011; Paiva and Martins 2011; Cardoso-Gustavson et al. 2014) have shown the functional role of glandular trichomes producing hydrophilic substances on young organs preventing desiccation, maintaining the water status and favouring organ growth. However, more studies on the structure and function of non-glandular trichomes, or covering trichomes are necessary to understand their complete adaptive significance in young organs of plants that are exposed to intense solar radiation and drought.

Lychnophora diamantinana belongs to Lychnophorinae, a subtribe of Vernoniaeae (Asteraceae) almost restrict to Cerrado domain in Brazil; the species is endemic to the 'campos rupestres' and is found on rocky outcrops or slopes (Coile and Jones 1981). The 'campos rupestres' are vegetation formations in the Cerrado domain and are characterized by rocky formations with altitudes that are usually greater than 900 m; the soils are shallow, with rapid drainage, acidic and nutrient-poor, with low organic matter content, and originated from the decomposition of quartzite and arenite (Ribeiro and Walter 2008). These environments experience a dry season and a rainy season, and constant winds, intense solar radiation, daily temperature fluctuations and fires (during the dry season) are common (Goodland and Ferri 1979; Ratter et al. 1997; Simon et al. 2009). In this environment, the growth and development of new plant organs usually

begins in the spring, before the rainy season (Ribeiro and Walter 2008), and thus, the plant will likely face extreme weather conditions that require the use of mechanisms to protect these organs. According to Appezzato-da-Glória and Estelita (2000), the substances rich in polysaccharides produced in shoot apices can prevent water loss in hot tropical climates, as seen in the Cerrado domain.

In this study, we describe for the first time an unusual way for water retention on the stem apices of *L. diamantinana* by the partial degradation of the cell wall of the terminal cells in the non-glandular trichomes. We also identify the origin and structure of the non-glandular trichomes and the secretion of the glandular trichomes, which we consider from a functional perspective.

Methods

Botanical materials

Lychnophora diamantinana is distributed along the Espinhaço Range in the State of Minas Gerais and is found at altitudes between 1300 and 1500 m (Coile and Jones 1981). The analysed material was collected in the Biribiri State Park, which is in the Municipality of Diamantina, Minas Gerais, Brazil. Voucher specimens were deposited in the SPF Herbarium (University of São Paulo) under voucher Loeuille et al. 530. Stem apices with leaf primordia, young leaves and completely expanded leaves were collected from three adult individuals, from August to November, during the transition period from the dry to the rainy season.

Light microscopy

For light microscopy analyses, entire stem apices, entire leaf primordia and the middle third of young and mature leaves were fixed in Karnovsky's solution (Karnovsky 1965, modified using pH 7.2 phosphate buffer), placed in a vacuum chamber to remove the air in the tissues, dehydrated in an ethanol series and embedded in hydroxyethyl methacrylate Leica Histo-resin[®] (Heraeus-Kulzer, Hanau, Germany), following the manufacturer's instructions, and sectioned at 5–7 µm thickness on a rotary microtome (Model RM 2245, Leica Microsystems Nussloch GmbH, Nussloch, Germany). For structural analysis, the sections were stained with toluidine blue 0.05 % in citrate-phosphate buffer, pH 4.5 (Sakai 1973), and mounted in synthetic resin Entellan[®] (Merck[®], Darmstadt, Germany).

Histochemistry

Histochemical reactions were performed using fresh material, including the hyaline substance, and/or embedded material, as described above. The staining reactions included periodic acid-Schiff (PAS) for total polysaccharides (McManus 1948); calcofluor white M2R (Hughes and McCully 1975) for cellulose measurements using

fluorescence; coriphosphine (Ueda and Yoshioka 1976) for pectin measurements using fluorescence; Sudan IV (Jensen 1962) for lipophilic substances; NADI reagent (David and Carde 1964) for terpenoids; ferric chloride (Johansen 1940) for general phenolic compounds; and aniline blue black (Fisher 1968) and xyloidine ponceau (Vidal 1970) for proteins. The sections were examined immediately after each reaction. For the calcofluor white test, the sections were observed under a epifluorescence microscope (Model DM LB, Leica Microsystems Wetzlar GmbH, Wetzlar, Germany) equipped with an 'HBO 100 W mercury vapour lamp' and a violet excitation filter (band-pass filter; 355–425 nm). For the coriphosphine test, the induced fluorescence was observed using the same microscope with a blue excitation filter (bandpass filter; 420–490 nm). Control sections were examined simultaneously with the histochemical tests, using standard procedures. To determine the natural characteristics of the organs and secretions, untreated sections were mounted and observed. Light microscopy results were recorded using a video camera (DC 300F Leica Microsystems (Schweiz) AG, Heerbrugg, Switzerland) coupled to the Leica® DM LB microscope to obtain images of the sections.

Scanning electron microscopy

For scanning electron microscopy (SEM) analyses, samples were fixed in Karnovsky (Karnovsky 1965) solution for 24 h, dehydrated in a graded ethanol series and critical-point dried with CO₂. The samples were attached to aluminium stubs and coated with gold (30–40 nm). Finally, the samples were examined under a LEO VP435 (Zeiss, Oberkochen, Germany) scanning electron microscope at 20 kV.

Transmission electron microscopy

Transmission electron microscopy (TEM) was used for ultrastructure analysis. Samples of entire leaf primordia (2–5-mm-long) were collected with tweezers and fixed in glutaraldehyde (2.5 % in 0.1 M, pH 7.3, sodium phosphate buffer) for 24 h, post-fixed with osmium tetroxide (1.0 % in 0.1 M, pH 7.3, sodium phosphate buffer) for 2 hours and incubated in uranyl acetate (0.5 % in aqueous solution). The samples were dehydrated through a graded series of acetone and the material was embedded in Araldite resin. Ultrathin sections were contrasted using uranyl acetate and lead citrate (Reynolds 1963) and were examined under a Philips Model EM 100 transmission electron microscope operating at 80 kV.

Results

Lychnophora diamantinana is a treelet that has stems with very short internodes and overlapping leaves, spirally

arranged (Fig. 1A and B). The leaf primordia and young leaves at the stem apices are covered by a viscous and hyaline substance (Fig. 1C and D), which is macroscopically visible in the field, especially after rain or fog. Young leaves are completely covered with the substance (Fig. 1C and D) that is spread over and between the trichome mesh (Fig. 1E). Fully expanded leaves may retain some of the material, giving the leaf surface a whitish appearance when dry (Fig. 1B).

Leaf primordia and young leaves have two types of trichomes (Fig. 2A and B): glandular trichomes, which have a pair of cells forming the peduncle and four to five pairs of secretory cells (Fig. 2C), and non-glandular trichomes, which are formed by three to seven cells and have an expanded terminal cell that can be simple or branched (Fig. 2B and D). The glandular trichomes are found on the abaxial side of the organ, whereas the non-glandular trichomes occur on both surfaces of the organ (Fig. 2A); the latter form a dense network covering the glandular trichomes, particularly the abaxial surface (Fig. 2E). The adaxial surface of the fully expanded leaves becomes glabrous, while the abaxial side remains pilose (Fig. 2F).

Trichomes differentiate very early, in 0.5-mm-long leaf primordia (Fig. 2G and H). The non-glandular trichomes arise from a protodermal cell with a dense cytoplasm and a conspicuous nucleus (Fig. 2H and I); this cell elongates anticlinally and divides periclinally to form two cells (Fig. 2J). The cell facing the organ becomes the basal cell of the trichome, while the cell facing the exterior divides periclinally to generate between two and six cells (Fig. 2K) and the distal cell expands directly after the last division (Fig. 2L). One or more cells will form the peduncle (Fig. 2L and D). Next, the terminal cell nucleus elongates (Fig. 2D and M) and breaks down, while the other trichome cells remain active and have intact nuclei (Fig. 2N).

In leaf primordia that are ~2.5-mm long, modifications occur in the cell wall of the terminal cell of the non-glandular trichomes of the young leaves; these modifications include loosening of the cell-wall structure together with retraction of the protoplasm which becomes denser (Fig. 2O–R).

The terminal cell of the non-glandular trichome exhibits a well-developed vacuole (Fig. 3A) and lipid droplets dispersed into the cytoplasm (Fig. 3B and C). Parietal degradation begins with the loosening of cellulose microfibrils (Fig. 3C). The inner portion becomes compact (Fig. 3D and F) and the expansion of the pectin matrix occurs in the outer most cell wall areas (Fig. 3D and E). In the cells where the outer part of the wall has degraded, the protoplast is very electron dense and fragmented, with no visible organelles (Fig. 3D and F), and the cuticle loses its cohesive appearance (Fig. 3G).

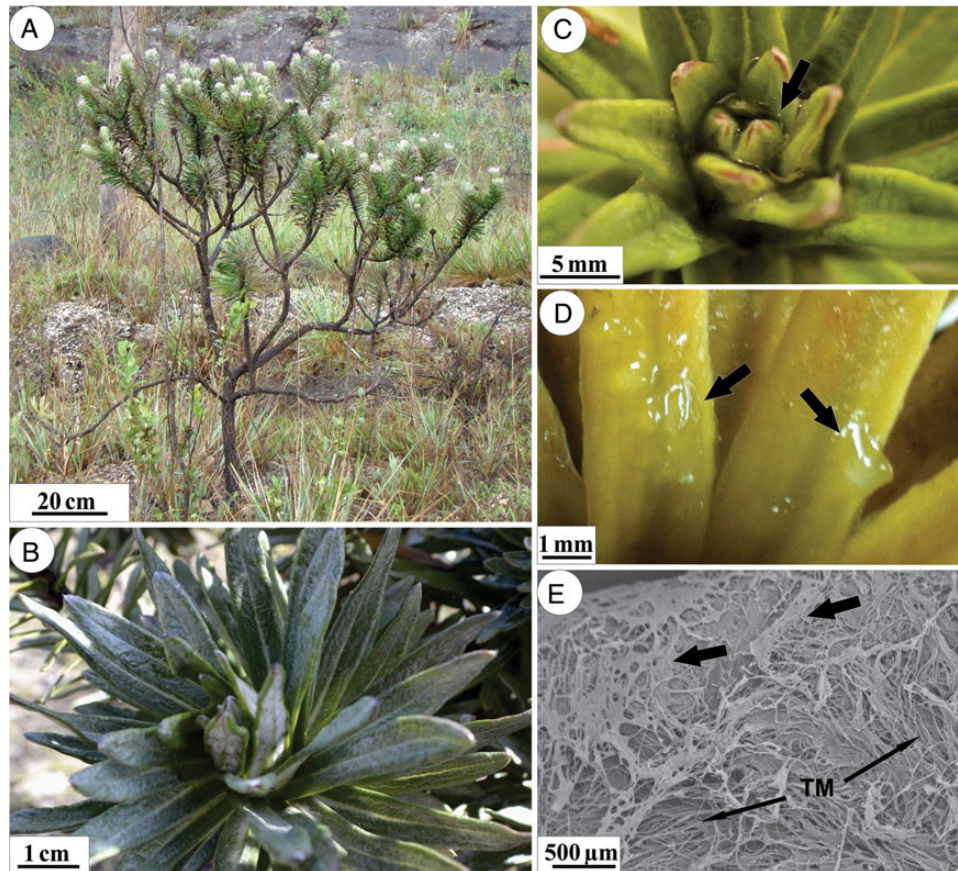


Figure 1. Morphological characteristics of *L. diamantinana*. (A) Treelet habit, exhibiting branches with overlapping leaves. (B) Stem apex with pronounced leaf overlap and whitish appearance. (C and D) Details of the apical region of the branch with hyaline substance (arrows) on the young leaves. (E) Scanning electron micrograph showing this substance (arrow) spread over and between the trichome mesh (TM) on the young leaf.

Histochemical analysis showed that the cell wall of the terminal cell of non-glandular trichomes mainly consists of polysaccharides (Fig. 4A–C). After degradation of the outer portion of the cell wall (Fig. 4B and C) it is observed that the inner portion of the cell wall is compact and presents cellulosic nature (Fig. 4D), while in the outer most portion (Fig. 4E) and in the products of the cell-wall degradation most of the carbohydrates are pectins. The inner portion of the cell wall remains compact, while the outer portion is replaced by products that resulted from its degradation (Fig. 4F). Sudan IV testing confirmed that the droplets observed in the protoplast are lipophilic and indicated the presence of cuticle in the terminal cells (Fig. 4G) prior to the release of the cell-wall degradation product. Cuticle rupture leads to the release of the product (Fig. 4H) and leaves the undegraded cellulosic portion exposed (Fig. 4H, inset). After the outer cell-wall degradation, the terminal cell of the trichome lacks protoplasm. In contrast, the basal cell retains intact protoplasm (Fig. 4I). The cell(s) of the peduncle (Fig. 4I) has suberized walls and the suberization is continuous with the cuticle of the common epidermal cells (Fig. 4J).

Glandular trichomes produce hydrophilic (Fig. 4K) and lipophilic substances (Fig. 4L) such as polysaccharides (Fig. 4K), terpenoids (Fig. 4M), phenolic compounds (Fig. 4N) and proteins (Fig. 4O). Despite this production, the secretion of hydrophilic substances by the glandular trichomes is substantially less than the amount of these substances produced by the partial degradation of the wall of the non-glandular trichomes (Fig. 4P).

Discussion

Cell-wall degradation occurs in a wide variety of situations: as part of normal processes in the plant lifecycle, such as seed germination, xylem vessel formation and the growth, maturation and abscission of fruit; as part of processes where other organisms, such as fungi and herbivores, break down plant material; or even as important tools in industrial processes (Brett and Waldron 1990). However, this study reports for the first time a process of partial cell-wall degradation of the trichome terminal cells in leaf primordia and young leaves, presumably protecting stem apices against dehydration.

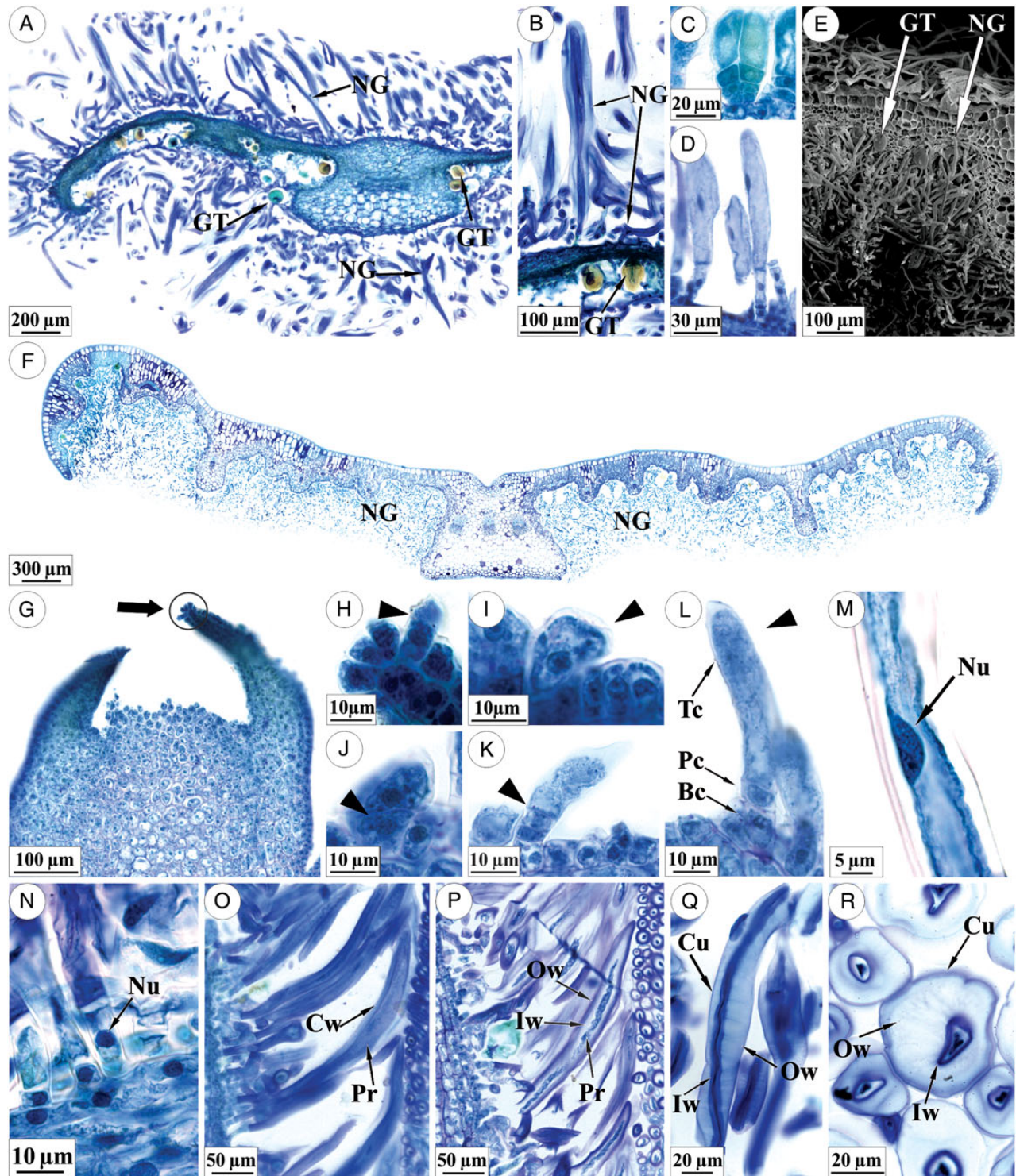


Figure 2. Characterization and development of trichomes in *L. diamantinana*. (A) Cross-section of the leaf primordium displaying non-glandular trichomes (NG) on both surfaces, and glandular trichomes (GT) on the abaxial surface. (B) Details showing an NG with its expanded terminal cell and a GT. (C) Glandular trichome. (D) Early stage of development of NG. (E) Scanning electron micrograph of a cross-section of the young leaf with CTs on the abaxial surface and fibrous NGs. (F) Cross-section of a fully expanded leaf, which is glabrous on the adaxial surface and pilose on the abaxial surface. (G and H) Leaf primordium that exhibits a trichome on its apex (circle in G) showing the beginning of NG differentiation (detail in H). (I–L) Non-glandular development (arrowhead). In (L), note the trichome structure: basal cell (Bc), peduncle cell (Pc) and terminal cell (Tc). (M–P) Non-glandular trichomes with changes in the nucleus (Nu), cell wall (Cw) and protoplast (Pr) of the terminal cell; inner portion of the cell wall (Iw) and outer cell wall (Ow). (Q and R) Terminal cell of the NG trichome sectioned longitudinally (Q) and transversally (R); the images show extended cuticle (Cu), the outer cell wall (Ow) with a loose structure and a compact inner cell wall (Iw).

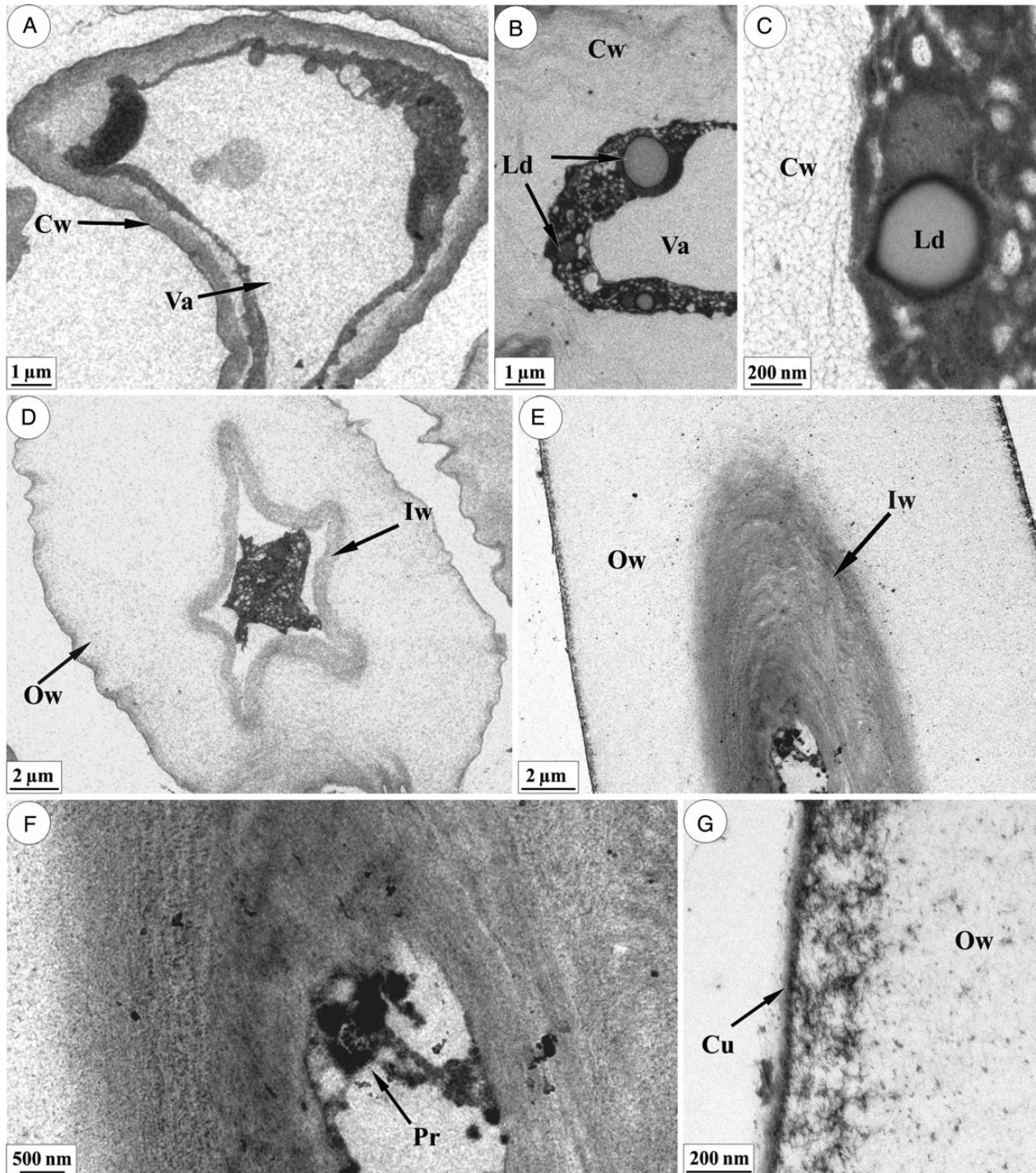


Figure 3. Non-glandular trichomes in leaf primordia of *L. diamantinana*. Transmission electron micrograph of the terminal cell of the trichome. (A) Terminal cell showing a large vacuole (Va) and a slightly cohesive cell wall (Cw). (B and C) Terminal cell exhibiting a cell wall with a very loose structure and a protoplast with lipid droplets (Ld). The fibrillar structure of the cell wall is noted in (C). (D) Overview of a terminal cell with a compact inner portion of the cell wall (Iw) and a loosened outer portion (Ow). (E and F) Inner portion of the cell wall with a compact structure and modified protoplast (Pr). (G) Details of the loosely arranged cuticle and of the outer portion of the cell wall.

The non-glandular trichomes in *L. diamantinana* resemble typical non-glandular covering trichomes, because they do not present cells with a dense cytoplasm, which is the characteristic of secretory cells (Werker

2000). In these trichomes, the cell wall partially degrades in the leaf primordia, after the elongation of the terminal cells is complete, and simultaneously with changes in the protoplast that lead to cell death. A similar cell-wall

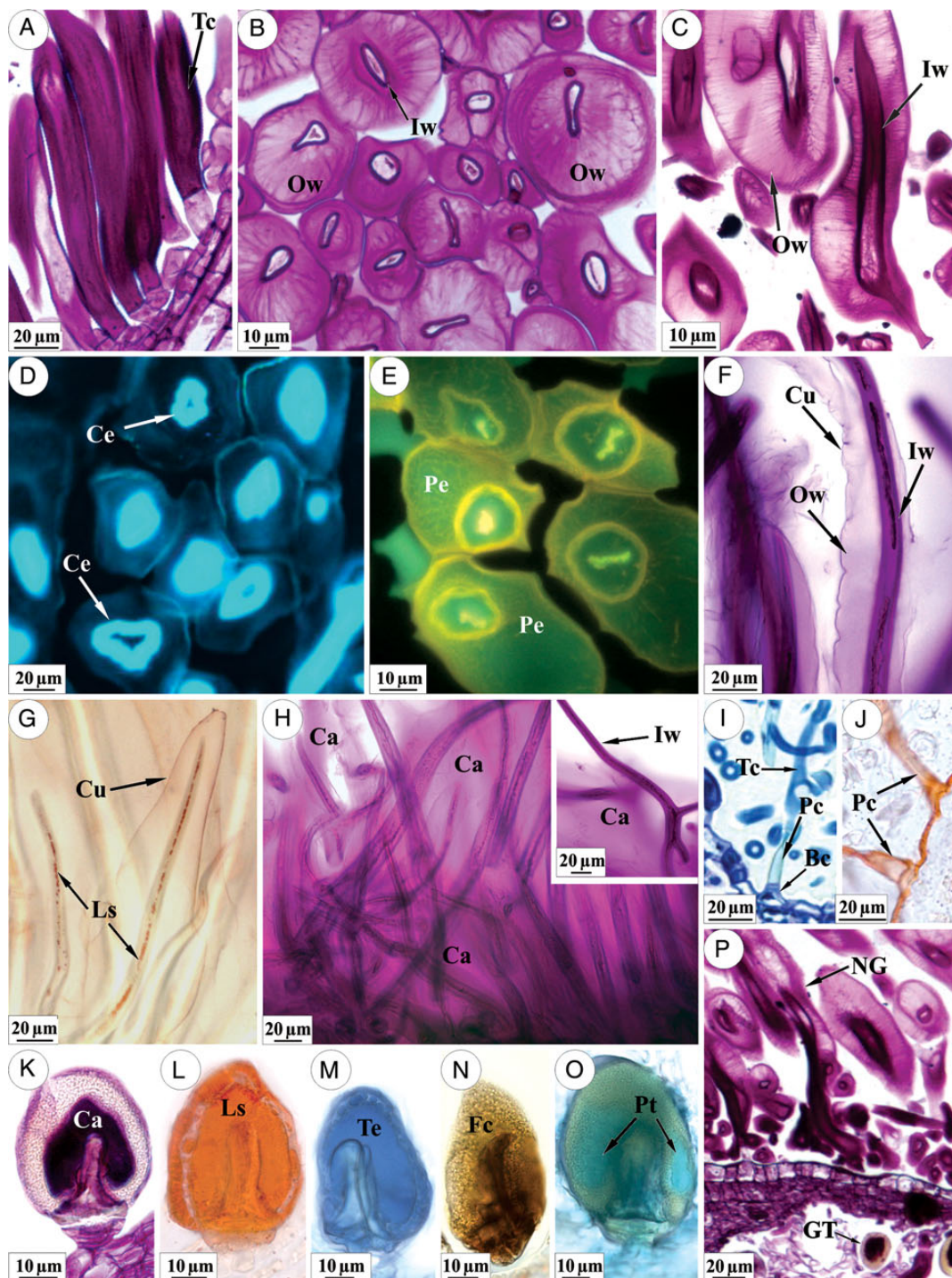


Figure 4. Non-glandular trichomes (NG) (A–J and P) and GT (K–P) in *L. diamantina*. (A–C) Terminal cells (Tc) displaying carbohydrates in the cell wall. In (A), trichomes before the degradation of outer cell wall. Note in (B)–(C) the compact inner portions of the cell wall (Iw) and the outer portion (Ow) with a loose structure. (D) Cellulose (Ce) in the inner portion of the terminal cell. (E) Pectin (Pe) in the altered cell wall. (F and G) Terminal cell before rupture of the cuticle (Cu). The lipophilic substances (Ls) in the protoplast are shown in (G). (H) Non-glandular trichomes with carbohydrates (Ca) spread over and between the trichomes; the inset illustrates a branched terminal cell after rupture of the cuticle. (I) Non-glandular trichome in a fully expanded leaf exhibiting the basal cell (Bc), peduncle cell (Pc) and terminal cell (Tc). (J) Details of peduncle cells showing the thickening of the suberin that is continuous with the cuticle. (K–O) Glandular trichomes with positive histochemical staining for exudate in the subcuticular space. (P) Young leaf with a large amount of carbohydrates in NG and comparatively less material in GT. Histochemical staining: carbohydrates (Ca) by the Schiff reaction (A–C, F, H, K, P); cellulose (Ce) by calcofluor white (D); pectins (Pe) by coriphosphine (E); lipophilic substances (Ls) by Sudan IV (G, J, L); terpenoids (Te) by the NADI reaction (M); phenolic compounds (Fc) by ferric chloride (N); and proteins (Pt) with aniline blue black (O).

degradation and programmed cell death process was described by [Gunawardena et al. \(2007\)](#) for the leaf development in *Aponogeton madagascariensis* (Aponogetonaceae), where the degradation of the cell wall forms perforations during leaf expansion. The authors observed that the components of the cell matrix are degraded, thus exposing a loose fibrillar network, which is sufficiently weakened to allow mechanical rupture. In the non-glandular trichomes from *L. diamantinana*, the cell-wall degradation products will be released after the cuticle rupture and then deposited on the surface of the developing leaves in the stem apices.

Our study found that the hyaline substance deposited on the stem apices largely consists of pectic cell-wall carbohydrates. The viscosity and gelation properties of a pectin-containing solution are directly related to its chemical composition and structure because the pectin gels form a three-dimensional crystalline network where the water molecules and their co-solutes are captured and show maximum coalescence ([Löfgren and Hermansson 2007](#); [Paiva et al. 2009](#)). The secretion of hydrophilic compounds in plants is associated with the presence of colleters, i.e. trichomes or protrusions that secrete a sticky substance containing a mixture of mucilage or lipophilic substances that cover apical buds to prevent the desiccation ([Fahn 1979](#)). We propose that the hyaline substance observed in *L. diamantinana* has a function analogous to that of colleter secretions based on the following: the similar predominantly hydrophilic composition; the early differentiation of the non-glandular trichomes, which has also been observed in colleters ([Appezato-da-Glória and Estelita 2000](#); [Paiva and Machado 2006](#); [Mayer et al. 2011, 2013](#); [Machado et al. 2013](#)); and the brief functional time of these structures, which coincides with the initial developmental phases of the leaf or other apical organs when protection against desiccation is essential because these organs are highly susceptible to dehydration ([Appezato-da-Glória and Estelita 2000](#); [Paiva and Machado 2006](#); [Paiva 2009](#); [Mayer et al. 2013](#)).

According to [Paiva \(2009\)](#), the presence of hydrophilic material, which is produced by colleters, on the young leaves helps to reduce the amount of water that is lost to the external environment and helps to maintain adequate moisture levels in the developing leaf. These actions continue until the leaves develop other types of protection against desiccation, such as forming a thick cuticle. Hygroscopic polysaccharides that are arranged over the cuticle can improve water retention and promote water vapour absorption through the cuticle ([Chamel et al. 1991](#)). Furthermore, [Miguel et al. \(2006\)](#) and [Mayer et al. \(2013\)](#) also suggested that the exudates produced by colleters could act as a physical barrier, protecting the young organs against dehydration. These functions are particularly important for development of the stem

apical structures in *L. diamantinana*, which inhabits the 'campos rupestres'. This environment is characterized by intense solar radiation, water scarcity and fires, especially during the dry season ([Ribeiro and Walter 2008](#)); these conditions require increased protection against dehydration. Fog can be found where this species is located, particularly on winter mornings. Thus, the presence of hygroscopic polysaccharides on the stem apices increases the moisture retention under foggy conditions.

Several species that inhabit 'campos rupestres' are known by the presence of colleters that provide hydrophilic material, such as species of Apocynaceae ([Sales et al. 2006](#); [Watanabe et al. 2009](#); [Morokawa et al. 2013](#)) and Leguminosae ([Coutinho et al. 2013](#)). Additionally, colleters are related in different families from all over the Cerrado domain that is characterized by fires, nutrient-poor soils, high temperatures and usually with a low water supply ([Ratter et al. 1997](#); [Ribeiro and Walter 2008](#); [Simon et al. 2009](#)). In this domain, the colleters are known in other species of Apocynaceae ([Appezato-da-Glória and Estelita 2000](#)) and in Celastraceae ([Mercadante-Simões and Paiva 2013](#)), Leguminosae (Fabaceae) ([Paiva and Machado 2006](#); [Paiva 2009](#)) and Rubiaceae ([Barreiro and Machado 2007](#)). In all these cases, the occurrence of hygroscopic polysaccharides on young organs probably plays an important protective function.

As reported in this study, in the young leaves of stem apices of *L. diamantinana* were observed glandular trichomes secreting phenolic compounds, lipophilic substances (including terpenoids) and proteins. It is well known that the glandular trichomes are isolated biosynthetically and structurally and for this reason it is probable that they produce large amount of phytotoxic substances that internal leaf tissues could not synthesize ([Werker 2000](#)). In this study, we suggest that besides the non-glandular trichomes supplying mostly carbohydrates and promoting the water retention on apices, the glandular trichomes contribute in the apices protection, mainly with terpenoids, phenolic compounds and proteins, that probably repel herbivore and pathogen attacks. This complex composition was previously registered also in secretions of colleters and it was related to this double protection ([Miguel et al. 2006](#); [Paiva and Machado 2006](#)).

In addition, the function of the non-glandular trichomes in the stem apices of *L. diamantinana* could not be restricted to protection against desiccation. The fibrous structure of the non-glandular trichomes after the rupture of the apical cell cuticle is similar to the structure reported in *Helichrysum aureonitens* and *Pteronia incana* by [Afolayan and Meyer \(1995\)](#) and [Mayekiso et al. \(2008\)](#), respectively. According to [Afolayan and Meyer \(1995\)](#), the fibrous appearance of these trichomes and their distribution on the leaf would suggest a protective

role against herbivores and fungal spores that are spread by wind. Furthermore, trichomes with extremely elongated cells may also protect shorter glandular trichomes (Werker 2000). We believe that non-glandular trichomes observed in expanded leaves of *L. diamantinana* probably protect the glandular trichomes, by their disposition, forming fibre meshes over these glands. However, more studies might be able to evaluate the probable function of the fibrous structure remaining from non-glandular trichomes in *L. diamantinana*.

Conclusions

The data on the composition and brief deposition time of hygroscopic hyaline substance on the apical stem organs allow us to infer that the non-glandular trichomes of leaf primordia in *L. diamantinana* function similarly to colleters by helping to protect the developing organs against dehydration. Furthermore, the glandular trichomes secrete terpenoids, phenolic compounds and proteins, which probably repel herbivore and pathogen attacks.

Sources of Funding

This work was supported by the National Council for Scientific and Technological Development (CNPq)—grants [Proc. no. 302776/2010-9, 302657/2011-8] and the São Paulo Council for Research (FAPESP)—financial support [Thematic Project Proc. no. 2010/51454-3] and grants for the first author [Proc. no. 2010/02085-5].

Contributions by the Authors

All the authors contributed to a similar extent overall. Each author agreed to the submitted manuscript.

Conflicts of Interest Statement

None declared.

Acknowledgements

The authors thank the IEF, MG, Brazil, for granting permission and facilities to collect plant material for this study.

Literature Cited

- Afolayan AJ, Meyer JJM. 1995. Morphology and ultrastructure of secreting and nonsecreting foliar trichomes of *Helichrysum aureonitens* (Asteraceae). *International Journal of Plant Sciences* **156**: 481–487.
- Appezato-da-Glória B, Estelita MEM. 2000. Development, structure and distribution of colleters in *Mandevilla illustris* and *M. velutina* (Apocynaceae). *Revista Brasileira de Botânica* **23**: 113–120.
- Barreiro DP, Machado SR. 2007. Coléteres dendróides em *Alibertia sessilis* (Vell.) K. Schum., uma espécie não-nodulada de Rubiaceae. *Revista Brasileira de Botânica* **30**:387–399.
- Brett C, Waldron K. 1990. Physiology and biochemistry of plant cell walls. *Topics in Plant Physiology* **2**:168–179.
- Bruni A, Tosi B, Modenesi P. 1987. Morphology and secretion of glandular trichomes in *Tamus communis*. *Nordic Journal of Botany* **7**: 79–84.
- Cardoso-Gustavson P, Campbell LM, Mazzoni-Viveiros SC, de Barros F. 2014. Floral colleters in Pleurothallidinae (Epidendroideae: Orchidaceae). *American Journal of Botany* **101**:587–597.
- Chamel A, Pineri M, Escoubes M. 1991. Quantitative determination of water sorption by plant cuticles. *Plant, Cell and Environment* **14**: 87–95.
- Coile NC, Jones SB Jr. 1981. *Lychnophora* (compositae: Vernonieae), a genus endemic to the Brazilian Planalto. *Brittonia* **33**:528–542.
- Coutinho IAC, Francino DMT, Meira RMSA. 2013. Leaf anatomical studies of *Chamaecrista* subsect. *Baseophyllum* (Leguminosae, Caesalpinioideae): new evidence for the up-ranking of the varieties to the species level. *Plant Systematics and Evolution* **299**:1709–1720.
- David R, Carde J. 1964. Histochimie—coloration différentielle des inclusions lipidiques et terpéniques des pseudophylles du pin maritime au moyen du reactif NADI. *Comptes Rendus Hebdomadaires des Seances de l'Academie des Sciences* **258**:1338–1340.
- Evert RF. 2007. *Esau's plant anatomy: meristems, cells and tissues of the plant body, their structure, function and development*, 2nd edn. Hoboken: John Wiley & Sons.
- Fahn A. 1979. *Secretory tissues in plants*. London: Academic Press.
- Fahn A. 1990. *Plant anatomy*, 4th edn. Cambridge: Pergamon Press.
- Fahn A, Cutler DF. 1992. *Xerophytes*. Berlin: Gebruder Borntraeger.
- Fisher DB. 1968. Protein staining of ribboned epon sections for light microscopy. *Histochemie* **16**:92–96.
- Goodland R, Ferri MG. 1979. *Ecologia do Cerrado*. Itatiaia: EDUSP.
- Göpfert JC, Heil N, Conrad J, Spring O. 2005. Cytological development and sesquiterpene lactone secretion in capitate glandular trichomes of sunflower. *Plant Biology* **7**:148–155.
- Gunawardena AHLAN, Greenwood JS, Dengler NG. 2007. Cell wall degradation and modification during programmed cell death in lace plant, *Aponogeton madagascariensis* (Aponogetonaceae). *American Journal of Botany* **94**:1116–1128.
- Hughes J, McCully ME. 1975. The use of an optical brightener in the study of plant structure. *Stain Technology* **50**:319–329.
- Jensen WA. 1962. *Botanical histochemistry: principle and practice*. San Francisco: W. H. Freeman.
- Johansen D. 1940. *Plant microtechnique*. New York: McGraw-Hill Book Co. Inc.
- Karnovsky MJ. 1965. A formaldehyde–glutaraldehyde fixative of high osmolality for use in electron microscopy. *Journal of Cell Biology* **27**:137a–138a.
- Löfgren C, Hermansson AM. 2007. Synergistic rheological behaviour of mixed HM/LM pectin gels. *Food Hydrocolloids* **21**:480–486.
- Machado AFP, Souza AM, Leitão CAE. 2013. Secretory structures at syconia and flowers of *Ficus enornis* (Moraceae): a specialization at ostiolar bracts and the first report of inflorescence colleters. *Flora* **208**:45–51.
- Machado SR, Gregório EA, Guimarães E. 2006. Ovary Peltate Trichomes of *Zeyheria Montana* (Bignoniaceae): developmental ultrastructure and secretion in relation to function. *Annals of Botany* **97**:357–369.

- Mayekiso B, Magwa ML, Coopoosamy R. 2008. The morphology and ultrastructure of glandular and non-glandular trichomes of *Pteronia incana* (Asteraceae). *African Journal of Plant Science* **2**: 052–060.
- Mayer JLS, Cardoso-Gustavson P, Appezzato-da-Glória B. 2011. Colleters in monocots: new record for Orchidaceae. *Flora* **206**: 185–190.
- Mayer JLS, Carmello-Guerreiro SM, Mazzafera P. 2013. A functional role for the colleters of coffee flowers. *AoB PLANTS* **5**: plt029; doi:10.1093/aobpla/plt029.
- McManus JFA. 1948. Histological and histochemical uses of periodic acid. *Stain Technology* **23**:99–108.
- Mercadante-Simões MO, Paiva EAS. 2013. Leaf colleters in *Tontelea micrantha* (Celastraceae, Salacioideae): ecological, morphological and structural aspects. *Comptes Rendus Biologies* **336**: 400–406.
- Miguel EC, Gomes VM, Oliveira MA, Da Cunha M. 2006. Colleters in *Bathysa nicholsonii* K. Schum. (Rubiaceae): ultrastructure, secretion protein composition, and antifungal activity. *Plant Biology* **8**:715–722.
- Morokawa R, Simões AO, Kinoshita LS. 2013. Apocynaceae s. str. do Parque Nacional da Serra da Canastra, Minas Gerais, Brasil. *Rodriguésia* **64**:179–199.
- Paiva EAS. 2009. Occurrence, structure and functional aspects of the colleters of *Copaifera langsdorffii* Desf. (Fabaceae, Caesalpinioideae). *Comptes Rendus Biologies* **332**:1078–1084.
- Paiva EAS, Machado SR. 2006. Ontogenesis, structure and ultrastructure of *Hymenaea stigonocarpa* (Fabaceae: Caesalpinioideae) colleters. *Revista de Biología Tropical* **54**:943–950.
- Paiva EAS, Martins LC. 2011. Calycinal trichomes in *Ipomoea cairica* (Convolvulaceae): ontogenesis, structure and functional aspects. *Australian Journal of Botany* **59**:91–98.
- Paiva EP, Lima MS, Paixão JA. 2009. Pectina: propriedades químicas e importância sobre a estrutura da parede celular de frutos durante o processo de maturação. *Revista Iberoamericana de Polímero* **4**:196–211.
- Ratter JA, Ribeiro JF, Bridgewater S. 1997. The Brazilian cerrado vegetation and threats to its biodiversity. *Annals of Botany* **80**: 223–230.
- Reynolds ES. 1963. The use of lead citrate and high pH as an electron-opaque stain in electron microscopy. *Journal of Cell Biology* **17**:208–212.
- Ribeiro JF, Walter BM. 2008. As principais fitofisionomias do bioma Cerrado. In: Sano SM, Almeida SP, Ribeiro JF, eds. *Cerrado: Ecologia e Flora*, Vol. 1. Brasília: Embrapa Cerrados, 151–212.
- Sakai WS. 1973. Simple method for differential staining of paraffin embedded plant material using toluidine blue O. *Stain Technology* **48**:247–249.
- Sales MF, Kinoshita LS, Simões AO. 2006. Eight new species of *Mandevilla* Lindley (Apocynaceae, Apocynoideae) from Brazil. *Novon: A Journal for Botanical Nomenclature* **16**:112–128.
- Siebert DJ. 2004. Localization of Salvinorin A and related compounds in glandular trichomes of the psychoactive sage, *Salvia divinorum*. *Annals of Botany* **93**:763–771.
- Simon MF, Grether R, Queiroz LP, Skema C, Pennington RT, Hughes CE. 2009. Recent assembly of the cerrado, a neotropical plant diversity hotspot, by *in situ* evolution of adaptations to fire. *Proceedings of the National Academy of Sciences of the USA* **106**:20.359–20.364.
- Turner IM. 1994. Sclerophylly—primarily protective? *Functional Ecology* **8**:669–675.
- Ueda K, Yoshioka S. 1976. Cell wall development of *Micrasterias americana*, especially in isotonic and hypertonic solutions. *Journal of Cell Science* **21**:617–631.
- Vidal BC. 1970. Dichroism in collagen bundles stained with xylydine ponceau 2R. *Annales d'Histochimie* **15**:289–296.
- Watanabe MTC, Roque N, Rapini A. 2009. *Apocynaceae sensu strictum* no Parque Municipal de Mucugê, Bahia, Brasil, incluindo a publicação válida de dois nomes em *Mandevilla* Lindl. *Iheringia, Série Botânica* **64**:63–75.
- Werker E. 2000. Trichome diversity and development. *Advances in Botanical Research* **31**:1–35.