



UNIVERSIDADE ESTADUAL DE CAMPINAS
SISTEMA DE BIBLIOTECAS DA UNICAMP
REPOSITÓRIO DA PRODUÇÃO CIENTÍFICA E INTELLECTUAL DA UNICAMP

Versão do arquivo anexado / Version of attached file:

Versão do Editor / Published Version

Mais informações no site da editora / Further information on publisher's website:

<https://www.hindawi.com/journals/acp/2015/954548/>

DOI: 10.1155/2015/954548

Direitos autorais / Publisher's copyright statement:

©2015 by Hindawi. All rights reserved.

DIRETORIA DE TRATAMENTO DA INFORMAÇÃO

Cidade Universitária Zeferino Vaz Barão Geraldo

CEP 13083-970 – Campinas SP

Fone: (19) 3521-6493

<http://www.repositorio.unicamp.br>

Research Article

MMP-2 and MMP-9 Activities and TIMP-1 and TIMP-2 Expression in the Prostatic Tissue of Two Ethanol-Preferring Rat Models

Beatriz Aparecida Fioruci-Fontanelli,^{1,2} Luiz Gustavo A. Chuffa,¹
Leonardo O. Mendes,^{1,2} Patricia Fernanda F. Pinheiro,¹ Flávia Karina Delella,³
Cilmery S. Kurokawa,⁴ Sérgio Luis Felisbino,³ and Francisco Eduardo Martinez¹

¹Department of Anatomy, Institute of Biosciences, Universidade Estadual Paulista (UNESP), 18618-970 Botucatu, SP, Brazil

²Structural and Cell Biology Program, UNICAMP, 13083-862 Campinas, SP, Brazil

³Department of Morphology, Institute of Biosciences, Universidade Estadual Paulista (UNESP), 18618-970 Botucatu, SP, Brazil

⁴Department of Pediatrics, Faculty of Medicine, Universidade Estadual Paulista (UNESP), 18618-970 Botucatu, SP, Brazil

Correspondence should be addressed to Francisco Eduardo Martinez; martinez@ibb.unesp.br

Received 7 April 2015; Accepted 29 June 2015

Academic Editor: Andrea Stringer

Copyright © 2015 Beatriz Aparecida Fioruci-Fontanelli et al. This is an open access article distributed under the Creative Commons Attribution License, which permits unrestricted use, distribution, and reproduction in any medium, provided the original work is properly cited.

We investigated whether chronic ethanol intake is capable of altering the MMP-2 and MMP-9 activities and TIMP-2 and TIMP-1 expression in the dorsal and lateral prostatic lobes of low (UChA) and high (UChB) ethanol-preferring rats. MMP-2 and MMP-9 activities and TIMP-1 and TIMP-2 expression were significantly reduced in the lateral prostatic lobe of the ethanol drinking animals. Dorsal prostatic lobe was less affected showing no significant alterations in these proteins, except for a reduction in the TIMP-1 expression in UChA rats. These important findings demonstrate that chronic ethanol intake impairs the physiological balance of the prostate extracellular matrix turnover, through downregulation of MMPs, which may contribute to the development of prostatic diseases. Furthermore, since these proteins are also components of prostate secretion, the negative impact of chronic ethanol intake on fertility may also involve reduction of MMPs and TIMPs in the seminal fluid.

1. Introduction

The ethanol alters the epithelial cells [1], the normal stromal-epithelial homeostasis [2], the inflammation [3], and the concentration of retinoic acid [4] in the prostate. This gland produces and secretes collagenase-like peptidase and gelatinolytic proteinases, such as matrix metalloproteinase (MMP), that are important for reproduction [5–7] and for turnover of the extracellular matrix components (ECM) as collagens, elastins, gelatin, matrix glycoproteins, and proteoglycan [8–10]. MMP-2 and MMP-9 (gelatinases A and B, resp.) are known to play key roles in tissue remodeling and repair through the degradation of many matrix proteins. The activity of MMP-2 and MMP-9 is regulated, respectively, by

tissue inhibitors of metalloproteinases termed TIMP-2 and TIMP-1 [11].

The imbalance in MMPs/TIMPs ratio is involved in the development of diseases such as arthritis, cancer cell invasion, metastasis, and fibrosis [8, 12]. Ethanol exposure alters this balance and leads to the development of fibrosis in the liver [13] with an excessive deposition of ECM [14]. In addition, ethanol has also been demonstrated to alter MMP-2 and MMP-9 activities in isolated vascular cells and breast cancer cells [15, 16].

Although it is known that the change of MMPs activities and TIMPs expression may result in pathologic alterations and that ethanol modifies the MMPs activity and TIMPs, the MMP-2 and MMP-9 activities in the prostate, as well as levels

of TIMP-1 and TIMP-2 during chronic ethanol intake, have not yet been examined. Such analyses may reveal another facet of the prostatic damage caused by ethanol. Therefore, we evaluated whether chronic ethanol intake alters the MMP-2 and MMP-9 activities and TIMP-2 and TIMP-1 expression in the dorsal and lateral prostates of UCh rats.

2. Material and Methods

2.1. Animals, Experimental Groups, and Diet. Forty UCh (University of Chile) male rats were used for this experiment. The UCh varieties are ethanol-preferring rats that display voluntary ethanol intake [17]. There are two UCh rat varieties, UChA and UChB, low (inbreeding of rats drinking less 2 g ethanol per kg of body weight/day) and high ethanol consumers (inbreeding of rats drinking more than 2 g ethanol per kg of body weight per day) of 10% (v/v) ethanol solution, respectively [18]. Twenty adults of each variety, UChA and UChB, weighing between 280 and 330 g (~90 days old), were obtained from the Department of Anatomy, Bioscience Institute, Campus of Botucatu, Universidade Estadual Paulista (IBB/UNESP). The UChA and UChB rats were divided into two subgroups ($n = 10/\text{group}$): UChA (ethanol-consuming rats) and UChAC (water-consuming rats); UChB (ethanol-consuming rats) and UChBC (water-consuming rats).

The ethanol intake was measured weekly throughout the experimental period (120 days) using a marked test tube. All rats were housed in individual cages in a temperature- and humidity-controlled room under a 12 h light-dark cycle and had free access to filtered tap water and were fed with standard rodent chow Nuvital (Nuvilab CR-1). After exposure, the rats were anesthetized with an intramuscular injection of a 2:1 solution of ketamine hydrochloride at 50 mg/mL and xylazine hydrochloride at 20 mg/mL at a dose of (0.1 mL/100 g) and euthanized by exsanguination. The dorsal and lateral prostatic lobes were collected, quickly frozen in liquid nitrogen, and stored at -80°C until the analysis would be carried out. The experimental protocols followed the Ethical Principles in Animal Research adopted by the Brazilian College of Animal Experimentation and were approved by Ethical Committee of the IBB/UNESP (Protocol number 340/2011).

2.2. Assessment of Gelatinolytic Activity of the MMP-2 and MMP-9. The gelatin-zymography assay was accessed according to the method described previously by Carvalho et al. [19]. The gelatinolytic activities of MMP-2 and MMP-9 were measured in the dorsal and lateral prostatic tissues from four different rats of each experimental group. The frozen samples were mechanically homogenized in lysis buffer. Then, 35 μg of protein was loaded in SDS-PAGE gels (8%) under non-reducing conditions, containing gelatin at a concentration of 1 mg/mL. Furthermore, purified MMP-2 (20 ng) and MMP-9 (30 pg) (Calbiochem, Boston, MA, USA) were also loaded as positive controls, and molecular weight determinations of MMP-2/MMP-9 were estimated with reference to protein standards (Bio-Rad Laboratories, Inc., Richmond, CA, USA).

Finally, quantitative evaluation of the gelatinolytic activity of captured images of the gels was performed by quantifying

the lysis bands corresponding to each type of enzyme activity using a computer-based imaging program (NIH freeware Image-J). The values were expressed as the mean \pm SD of the totality of IODs for the MMP-2 proenzyme, intermediate, and active forms and for MMP-9 pro- and active forms.

2.3. Measurement of TIMP-1 and TIMP-2. The prostatic tissue expression of TIMP-1 and TIMP-2 was determined using the commercially available immunoassay kit (Quantikine Rat TIMP-1 and TIMP-2) according to the manufacturer's instructions (R&D Systems, Inc.). Prostatic tissue samples were homogenized and diluted 1:200 (v/v) for TIMP-1 and 1:10 (v/v) for TIMP-2. The concentrations of TIMPs in the samples were determined by extrapolation from an adapted standard curve. TIMPs were determined in the following ranges: TIMP-1 between 37.5 and 2400 pg/mL and TIMP-2 between 1.56 and 100 ng/mL. All determinations were performed in duplicate. The coefficient of variation intra-assay was $<4\%$ for TIMP-1 and $<10\%$ for TIMP-2. The interassay value was $<8\%$ for TIMP-1 and $<12\%$ for TIMP-2.

2.4. Statistical Analysis. The gelatinolytic activity of the MMP-2 and MMP-9 was evaluated using Student's *t*-test. The analysis of TIMP-1 and TIMP-2 was compared using the Mann-Whitney test. Significant differences were set at $P < 0.05$. The statistical software used was Graph Pad InStat version 3 (Graph Pad Software, San Diego, CA, USA), and Sigma Plot version 11 (Systat Software, San Jose, CA) was used for graphic design.

3. Results

3.1. Ethanol Intake. The relative ingestion of ethanol by rats was analyzed during the whole experimental period, and the results were as expected for each variety. The daily average of ethanol ingestion by UChA and UChB was 1.7 ± 0.1 and 4.2 ± 0.3 (mean \pm SD) g/kg, respectively.

3.2. Effects of Ethanol upon MMP-2 and MMP-9 Activity in the Dorsal and Lateral Prostatic Lobes. The gelatin-zymography assay showed that when compared with control group, MMP-2 activity was slightly decreased in the dorsal prostate of UChA rats (Figure 1(a)) and UChB (Figure 1(c)). In the lateral prostate, MMP-2 activity was significantly decreased in UChA rats (Figure 1(b)) and slightly reduced in the UChB rats (Figure 1(d)). MMP-9 activity was slightly decreased in the dorsal prostate of UChA rats (Figure 1(a)) and was not observed in the dorsal prostate of UChB (Figure 1(c)). In the lateral prostate, MMP-9 activity exhibited a significant reduction in UChA rats (Figure 1(b)) and a marked reduction in the UChB rats (Figure 1(d)).

3.3. TIMP-1 and TIMP-2 Protein Expression in the Dorsal and Lateral Prostates. The TIMP-1 expression decreased significantly in the dorsal and lateral prostate of UChA rats (Figures 2(a) and 2(b)), and in the lateral prostate of UChB rats (Figure 2(d)). Conversely, TIMP-2 expression was significantly decreased in the lateral prostate of both UChA and UChB rats (Figures 2(a)–2(d)) and slightly reduced in the dorsal prostate of UChA rats.

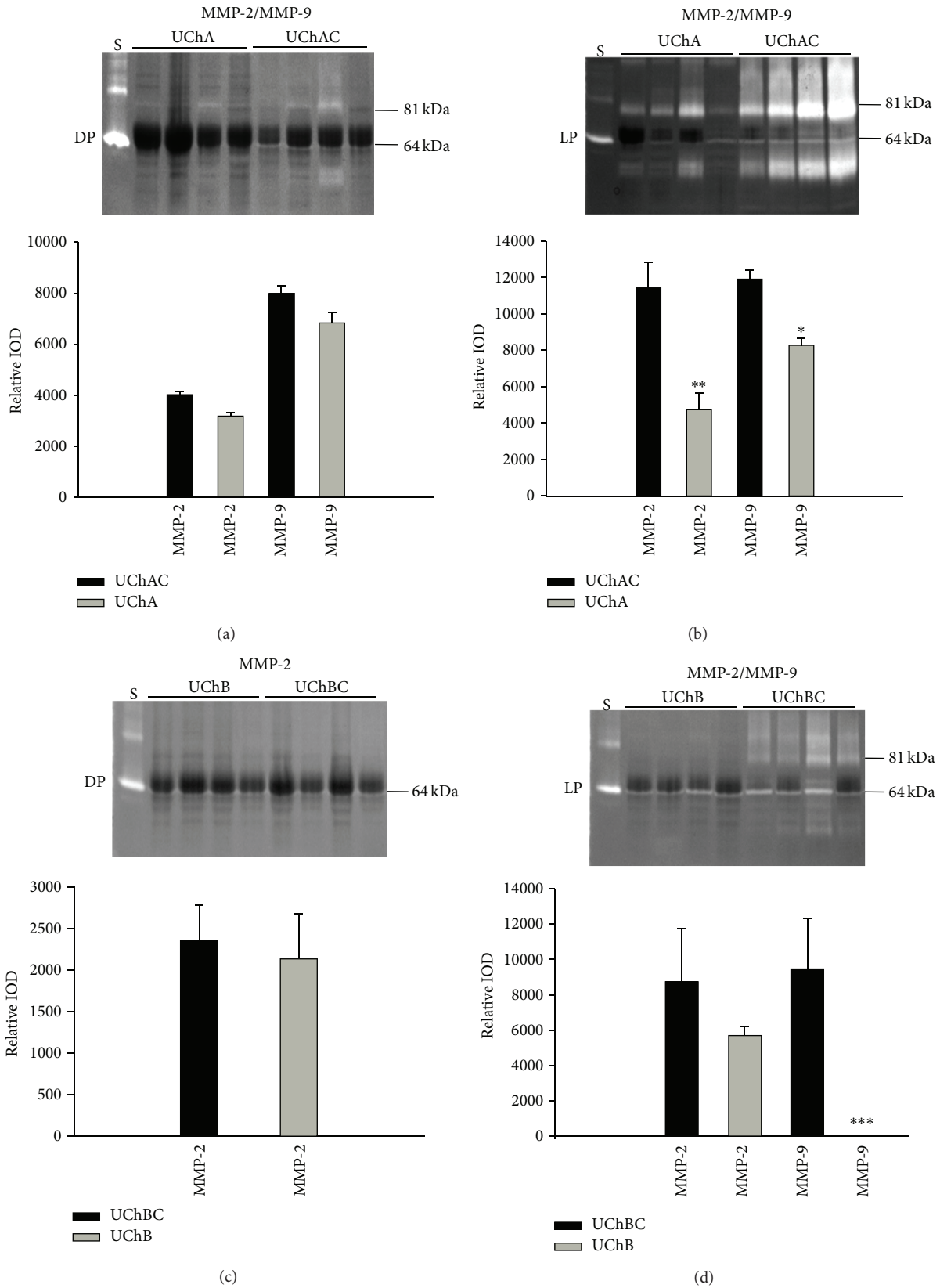
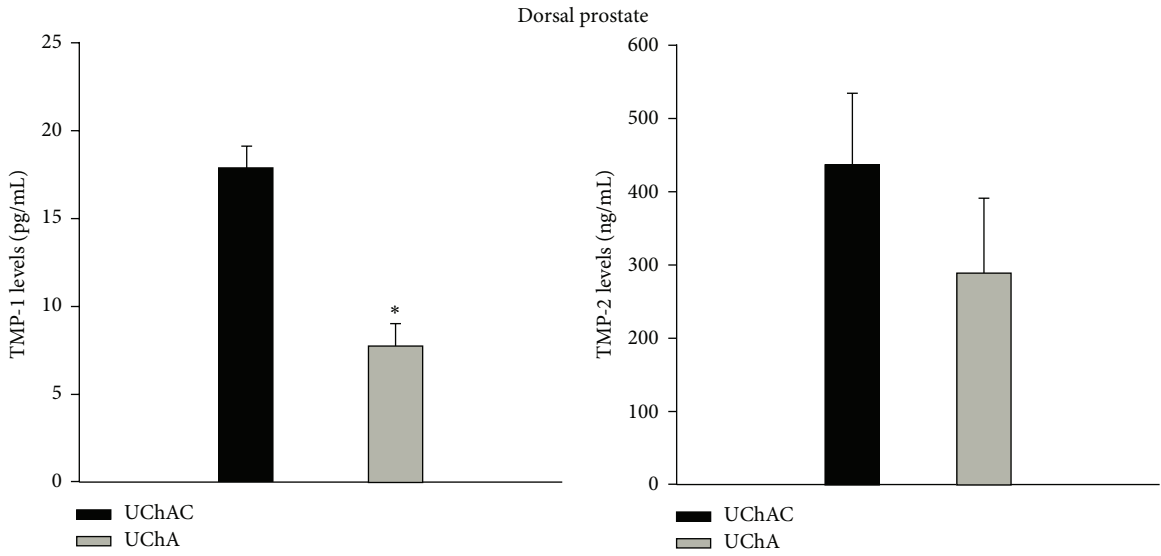
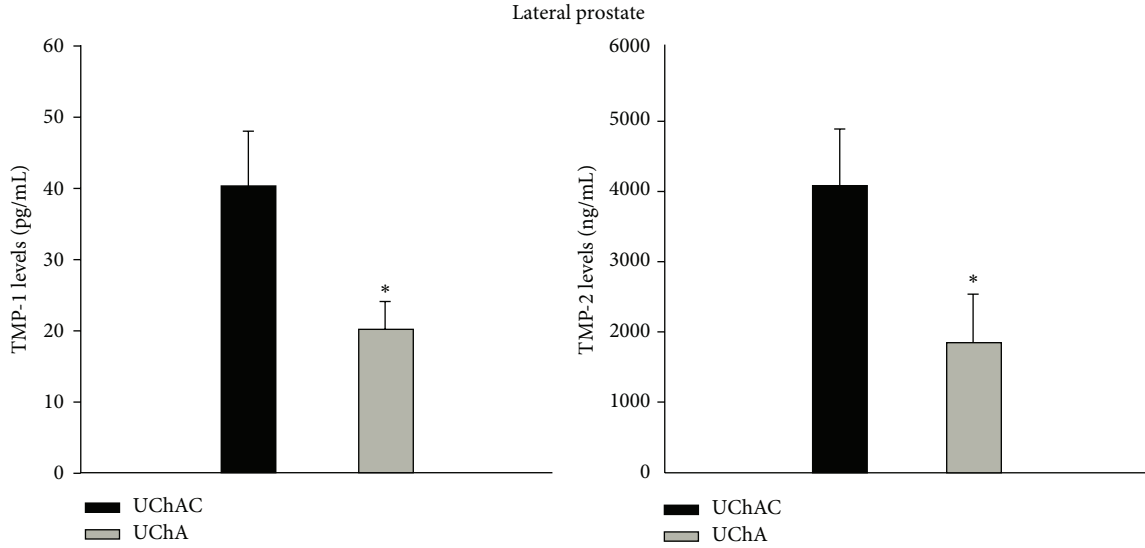


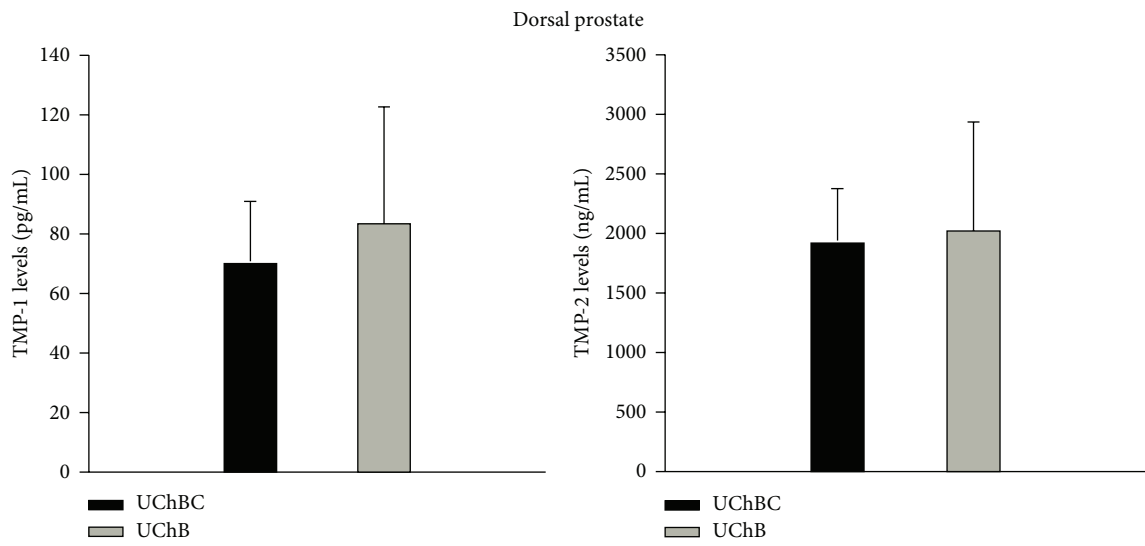
FIGURE 1: Representative gelatin-zymography of dorsal prostate (DP) and lateral prostate (LP) from low (UChA) and high (UChB) ethanol-preferring rats. UChAC and UChBC are respective controls. Clear bands of gelatinolytic activity for MMP-2 (64 kDa, intermediate form) and MMP-9 (81 kDa, active form) were observed. Lane S corresponds to the reference standard of human pro-MMP9 and active-MMP2 enzymes. Ethanol intake slightly reduces the MMP-2 activity in the dorsal lobe of both rat models and in the lateral lobe of UChB rats but significantly reduces it in the lateral lobe of UChA rats. MMP-9 activity was slightly reduced in dorsal lobe but was significantly reduced in the lateral lobe of both rat models, mainly in the UChB rats. The histograms represent the values of densitometric analysis of the bands. Data are expressed as the mean \pm SD (* $0.01 < P < 0.05$; ** $0.001 < P < 0.01$; *** $P < 0.001$).



(a)



(b)



(c)

FIGURE 2: Continued.

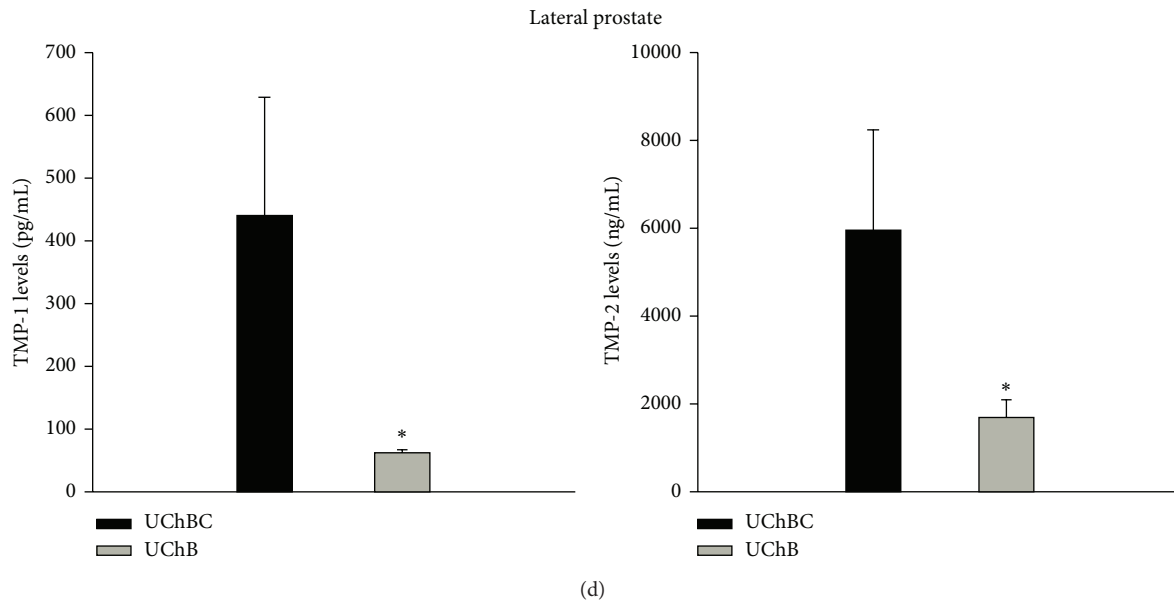


FIGURE 2: TIMP-1 and TIMP-2 protein levels in the dorsal prostate (DP) and lateral prostate (LP) from low (UChA) and high (UChB) ethanol-preferring rats. UChAC and UChBC are respective controls. The TIMP-1 expression decreased significantly in the dorsal and lateral prostate of UChA rats (Figures 2(a) and 2(b)), and in the lateral prostate of UChB rats (Figure 2(d)). Conversely, TIMP-2 expression was significantly decreased in the lateral prostate of both UChA and UChB rats (Figures 2(a)–2(d)) and slightly reduced in the dorsal prostate of UChA rats. The histograms represent the values of densitometric analysis of the bands. Data are expressed as the mean \pm SD. (a) TIMP-1 ($P < 0.01$). (b) and (d) TIMP-1 and TIMP-2 ($P < 0.05$).

4. Discussion

The amount of ethanol consumed by the UChA and UChB rats allowed us to evaluate their effects upon MMP-2 and MMP-9 activities as well as TIMP-1 and TIMP-2 expression in the dorsal and lateral prostatic lobes. Taken together our results have shown that low (UChA) and high (UChB) chronic ethanol intake decreased the MMP-2 and MMP-9 activities in the rat lateral prostatic lobe. The moderate to regular intake of ethanol reduces growth of atherosclerotic plaque by reducing MMP-2 and MMP-9 activities, which are responsible for degrading types IV and V collagen surrounding smooth muscle cell [16]. The moderate ethanol intake is important to prevent vascular diseases in humans [20]. Disruption of the MMP/TIMP ratio can lead to the excessive accumulation of collagen in the extracellular matrix and consequently result in fibrosis [13, 21]. The decreases of MMPs activities observed in the lateral prostate of rats exposed to ethanol can lead to prostatic fibrosis that occurs when the matrix synthesis rate exceeds the degradation [21–23]. Thus, the proteins associated with tissue fibrosis need to be further investigated in the lateral prostatic lobe of ethanol-preferring rats.

TIMPs act as a negative regulator for MMP-9 and MMP-2, and when TIMPs increase, the MMPs activity decreases. There is evidence that TIMPs, mainly TIMP-2, is a bifunctional protein that acts as an inhibitor of MMPs and also as an activator of pro-MMPs [24]. Since both MMPs and TIMPs showed the same direction of reduction of activity/expression, respectively, we did not find an imbalance in the

MMP/TIMP ratio regarding the prostatic lobes of ethanol-preferring rats. Low MMPs activities were followed by low TIMPs levels, indicating the expected normal regulation, mainly in the lateral prostate. In the dorsal prostate, the slight decrease in the activity of MMP-2 was correlated with a slight decrease in TIMP-2 levels, while normal activity of MMP-9 was associated to a decrease in the TIMP-1 levels. How ethanol intake is affecting MMPs and TIMPs expression in prostatic lobes remains to be determined and certainly involves complex transcriptional and translational events, activation of the proenzymes, and inhibition of the activated proteinases by other inhibitors [25, 26]. Furthermore, the reduced MMP activities in lateral lobe of ethanol-preferring rats, besides effects on ECM turnover, may also have implication on regulation of apoptosis and cell growth in this lobe [27, 28].

Previous studies have shown that MMP-2 activity displayed significantly different values related to low and high ethanol exposure [15], and high concentration of ethanol (20% v/v) has also been found to not change MMP-2 activity in the rat mesenteric arterial bed [29] or in the alcoholic liver tissue [30]. Notably, our results further revealed a similar inverse dose response relation between ethanol intake and MMP-2 activity in the lateral prostate.

We conclude that chronic ethanol intake impairs the physiological balance of the prostate extracellular matrix turnover, through downregulation of MMPs, which may contribute to the development of prostatic diseases. Furthermore, since these proteins are also components of prostate secretion, the negative impact of chronic ethanol intake on fertility

may also involve reduction of MMPs and TIMPs in the seminal fluid.

Conflict of Interests

The authors declare that there is no conflict of interests regarding the publication of this paper.

Acknowledgments

This work comprises part of the Ph.D. thesis of BAFF presented to the Institute of Biosciences of the Sao Paulo State University, UNESP, Brazil, and was supported by CAPES do Brazil and by grants from the São Paulo State Research Foundation (FAPESP 2011/03394-4 and 2011/13713-0).

References

- [1] F. E. Martinez, I. A. Laura, M. Martinez, C. R. Padovani, and E. Bustos-Obregón, "Morphology of the ventral lobe of the prostate and seminal vesicles in an ethanol-drinking strain of rats (UChA and UChB)," *Journal of Submicroscopic Cytology and Pathology*, vol. 33, no. 1-2, pp. 99–106, 2001.
- [2] E. M. Cândido, C. A. F. Carvalho, F. E. Martinez, and V. H. A. Cagnon, "Experimental alcoholism and pathogenesis of prostatic diseases in UChB rats," *Cell Biology International*, vol. 31, no. 5, pp. 459–472, 2007.
- [3] L. O. Mendes, J. P. A. Amorim, G. R. Teixeira et al., "Mast cells and ethanol consumption: interactions in the prostate, epididymis and testis of UChB rats," *The American Journal of Reproductive Immunology*, vol. 66, no. 3, pp. 170–178, 2011.
- [4] B. A. F. Fontanelli, L. G. A. Chuffa, G. R. Teixeira et al., "Chronic ethanol consumption alters all-trans-retinoic acid concentration and expression of their receptors on the prostate: a possible link between alcoholism and prostate damage," *Alcoholism: Clinical and Experimental Research*, vol. 37, no. 1, pp. 49–56, 2013.
- [5] J. Lukac and E. Koren, "Mechanism of liquefaction of the human ejaculate II. Role of collagenase-like peptidase and seminal proteinase," *Journal of Reproduction and Fertility*, vol. 56, no. 2, pp. 501–506, 1979.
- [6] H.-Z. Yin, M. M. Vogel, M. Schneider et al., "Gelatinolytic proteinase activities in human seminal plasma," *Journal of Reproduction and Fertility*, vol. 88, no. 2, pp. 491–501, 1990.
- [7] M. J. Wilson, H. Norris, D. Kapoor, M. Woodson, C. Limas, and A. A. Sinha, "Gelatinolytic and caseinolytic proteinase activities in human prostatic secretions," *Journal of Urology*, vol. 149, no. 3, pp. 653–658, 1993.
- [8] H. Nagase, "Matrix metalloproteinases," in *Zinc Metalloproteases in Health and Diseases*, N. M. Hooper, Ed., Taylor & Francis, London, UK, 1996.
- [9] L. A. Justulin Jr., H. H. M. Della-Coleta, S. R. Taboga, and S. L. Felisbino, "Matrix metalloproteinase (MMP)-2 and MMP-9 activity and localization during ventral prostate atrophy and regrowth," *International Journal of Andrology*, vol. 33, no. 5, pp. 696–708, 2010.
- [10] F. K. Delella, L. A. Justulin Jr., and S. L. Felisbino, "Finasteride treatment alters MMP-2 and -9 gene expression and activity in the rat ventral prostate," *International Journal of Andrology*, vol. 33, no. 1, pp. e114–e122, 2010.
- [11] D. E. Gomez, D. F. Alonso, H. Yoshiji, and U. P. Thorgeirsson, "Tissue inhibitors of metalloproteinases: structure, regulation and biological functions," *European Journal of Cell Biology*, vol. 74, no. 2, pp. 111–122, 1997.
- [12] J. F. Woessner Jr., "The family of matrix metalloproteinases," *Annals of the New York Academy of Sciences*, vol. 732, pp. 11–21, 1994.
- [13] V. Hernandez-Gea and S. L. Friedman, "Pathogenesis of liver fibrosis," *Annual Review of Pathology: Mechanisms of Disease*, vol. 6, pp. 425–456, 2011.
- [14] S. V. Siegmund and D. A. Brenner, "Molecular pathogenesis of alcohol-induced hepatic fibrosis," *Alcoholism: Clinical and Experimental Research*, vol. 29, no. 11, pp. 102–109, 2005.
- [15] M. M. Aye, M. A. Cuiling, H. Lin, K. A. Bower, R. C. Wiggins, and J. Luo, "Ethanol-induced *in vitro* invasion of breast cancer cells: the contribution of MMP-2 by fibroblasts," *International Journal of Cancer*, vol. 112, no. 5, pp. 738–746, 2004.
- [16] J. P. Cullen, S. Sayeed, Y. Kim et al., "Ethanol inhibits pulse pressure-induced vascular smooth muscle cell migration by differentially modulating plasminogen activator inhibitor type 1, matrix metalloproteinase-2 and -9," *Thrombosis and Haemostasis*, vol. 94, no. 3, pp. 639–645, 2005.
- [17] J. Mardones and N. Segovia-Riquelme, "Thirty-two years of rats by ethanol preference: UChA and UChB strains," *Neurobehavioral Toxicology and Teratology*, vol. 5, pp. 171–178, 1983.
- [18] M. E. Quintanilla, Y. Israel, A. Sapag, and L. Tampier, "The UChA and UChB rat lines: metabolic and genetic differences influencing ethanol intake," *Addiction Biology*, vol. 11, no. 3-4, pp. 310–323, 2006.
- [19] R. F. Carvalho, R. Dariolli, L. A. Justulin Jr. et al., "Heart failure alters matrix metalloproteinase gene expression and activity in rat skeletal muscle," *International Journal of Experimental Pathology*, vol. 87, no. 6, pp. 437–443, 2006.
- [20] N. Fiotti, F. Tubaro, N. Altamura et al., "Alcohol reduces MMP-2 in humans and isolated smooth muscle cells," *Alcohol*, vol. 42, no. 5, pp. 389–395, 2008.
- [21] B. Surya Narayanan, P. Latha, and R. Rukkumani, "Protective effects of *Phyllanthus amarus* on fibrotic markers during alcohol and polyunsaturated fatty acid-induced toxicity," *Toxicology Mechanisms and Methods*, vol. 21, no. 1, pp. 48–52, 2011.
- [22] T. A. Wynn, "Cellular and molecular mechanisms of fibrosis," *Journal of Pathology*, vol. 214, no. 2, pp. 199–210, 2008.
- [23] E. C. El Hajj, M. C. El Hajj, T. G. Voloshenyuk et al., "Alcohol modulation of cardiac matrix metalloproteinases (MMPs) and tissue inhibitors of MMPs favors collagen accumulation," *Alcoholism: Clinical and Experimental Research*, vol. 38, no. 2, pp. 448–456, 2014.
- [24] B. Brehmer, S. Biesterfeld, and G. Jakse, "Expression of matrix metalloproteinases (MMP-2 and -9) and their inhibitors (TIMP-1 and -2) in prostate cancer tissue," *Prostate Cancer and Prostatic Diseases*, vol. 6, no. 3, pp. 217–222, 2003.
- [25] H. C. Crawford and L. M. Matrisian, "Mechanisms controlling the transcription of matrix metalloproteinase genes in normal and neoplastic cells," *Enzyme and Protein*, vol. 49, no. 1-3, pp. 20–37, 1996.
- [26] H. Nagase, "Activation mechanisms of matrix metalloproteinases," *Biological Chemistry*, vol. 378, no. 3-4, pp. 151–160, 1997.
- [27] L. Guedez, W. G. Stetler-Stevenson, L. Wolff et al., "In vitro suppression of programmed cell death of B cells by tissue inhibitor of metalloproteinases-1," *The Journal of Clinical Investigation*, vol. 102, no. 11, pp. 2002–2010, 1998.
- [28] J. Barasch, J. Yang, J. Qiao et al., "Tissue inhibitor of metalloproteinase-2 stimulates mesenchymal growth and regulates epithelial branching during morphogenesis of the rat metanephros,"

Journal of Clinical Investigation, vol. 103, no. 9, pp. 1299–1307, 1999.

- [29] J. T. Rocha, U. V. Hipólito, A. Martins-oliveira et al., “Ethanol consumption alters the expression and reactivity of adrenomedullin in the rat mesenteric arterial bed,” *Alcohol and Alcoholism*, vol. 47, no. 1, Article ID agr141, pp. 9–17, 2012.
- [30] Y. Ponomarenko, M. A. Leo, W. Kroll, and C. S. Lieber, “Effects of alcohol consumption on eight circulating markers of liver fibrosis,” *Alcohol and Alcoholism*, vol. 37, no. 3, pp. 252–255, 2002.



Hindawi
Submit your manuscripts at
<http://www.hindawi.com>

