

UNIVERSITY OF BIRMINGHAM

University of Birmingham
Research at Birmingham

Ethyl Lactate Production from the Catalytic Depolymerisation of Postconsumer Poly(lactic acid)

Roman Ramirez, Luis; Powders, Mark; McKeown, Paul; Jones, Matthew; Wood, Joe

DOI:

[10.1007/s10924-020-01824-6](https://doi.org/10.1007/s10924-020-01824-6)

License:

Creative Commons: Attribution (CC BY)

Document Version

Publisher's PDF, also known as Version of record

Citation for published version (Harvard):

Roman Ramirez, L, Powders, M, McKeown, P, Jones, M & Wood, J 2020, 'Ethyl Lactate Production from the Catalytic Depolymerisation of Postconsumer Poly(lactic acid)', *Journal of Polymers and the Environment*. <https://doi.org/10.1007/s10924-020-01824-6>

[Link to publication on Research at Birmingham portal](#)

General rights

Unless a licence is specified above, all rights (including copyright and moral rights) in this document are retained by the authors and/or the copyright holders. The express permission of the copyright holder must be obtained for any use of this material other than for purposes permitted by law.

- Users may freely distribute the URL that is used to identify this publication.
- Users may download and/or print one copy of the publication from the University of Birmingham research portal for the purpose of private study or non-commercial research.
- User may use extracts from the document in line with the concept of 'fair dealing' under the Copyright, Designs and Patents Act 1988 (?)
- Users may not further distribute the material nor use it for the purposes of commercial gain.

Where a licence is displayed above, please note the terms and conditions of the licence govern your use of this document.

When citing, please reference the published version.

Take down policy

While the University of Birmingham exercises care and attention in making items available there are rare occasions when an item has been uploaded in error or has been deemed to be commercially or otherwise sensitive.

If you believe that this is the case for this document, please contact UBIRA@lists.bham.ac.uk providing details and we will remove access to the work immediately and investigate.



Ethyl Lactate Production from the Catalytic Depolymerisation of Post-consumer Poly(lactic acid)

Luis A. Román-Ramírez¹ · Mark Powders¹ · Paul McKeown² · Matthew D. Jones² · Joseph Wood¹

© The Author(s) 2020

Abstract

Bioplastics such as poly(lactic acid) (PLA), which are derived from renewable sources, promoted as biodegradable and implemented for numerous functions, offer a promising alternative to the enduring synthetic plastics abundant in society. However, the degradation of PLA is slow under natural environmental conditions. A chemical recycling route is thus required to couple mitigation of plastic persistence repercussions with circular economy adherence. In the present work, the production of ethyl lactate by the catalysed transesterification of post-consumer PLA was investigated. The catalyst employed was a propylenediamine Zn(II) complex. The PLA samples investigated consisted of a phone case, an infant's toy, a film, a cup and 3D printing material. Degradation reactions were studied at 50 °C and 90 °C and the concentrations measured at two different time intervals, 1 h and 3 h. The results revealed that greater activity of the catalyst was observed at 50 °C for two PLA samples (cup, 3D print). PLA film achieved the greatest lactate yield (71%) of all samples after 3 h at 50 °C. It is concluded that the propylenediamine Zn(II) catalyst can be used to produce green solvent ethyl lactate at mild temperatures from post-consumer PLA, even in the presence of unknown additives.

Keywords Ethyl lactate · Poly(lactic acid) · Depolymerisation · Renewable chemicals · Catalysis

Introduction

Plastics in society have become ubiquitous. Their intrinsic properties such as electrical insulation, low density and chemical resistance have enabled utility in a wide variety of applications, including packaging, electrical and transportation [1]. It is estimated that 8300 Mt of synthetic plastics have been produced globally to date; of these, only 9% by mass of waste plastics are recycled, 79% are discarded in landfills or the natural environment and 12% incinerated [2]. Furthermore, plastic degradation takes hundreds of years under natural conditions [3]. On an extensive scale, these waste plastics which accumulate on land and in the oceans inflict damage upon the environment [2]. The ingestion

of waste plastics by marine life, for instance, culminates in intestinal tract blockage, lower food uptake and death; ingesting plastic debris (microplastics) comprising of chemical pollutants contaminates food chains and raises toxicity with each successive trophic level [4]. Exposure to persistent organic pollutants such as polychlorinated biphenyls (PCBs) found in microplastics, have adverse health effects, including reproductive abnormalities, carcinogenesis and acute lethality [5]. To a lesser extent, commercial fishing equipment debris instigates plastic entanglement that suffocates and lacerates turtles, mammals and birds [4].

In contrast to petroleum-derived plastics, bioplastics are, in principle, biodegradable under environmental parameters, generated from renewable biomass feedstock and incorporate non-toxic additives to enhance performance. Various bioplastic grades are currently utilised for numerous applications ranging from medical to agriculture [6]. The adoption of bioplastics into society effectively lessens reliance upon non-renewable feedstocks, reduces the need for harmful and unsustainable waste management schemes and decreases the unacceptable damage that synthetic plastics and associated pollutants inflict upon the environment.

✉ Matthew D. Jones
mj205@bath.ac.uk

✉ Joseph Wood
j.wood@bham.ac.uk

¹ School of Chemical Engineering, University of Birmingham, Edgbaston, Birmingham B15 2TT, UK

² Department of Chemistry, University of Bath, Claverton Down, Bath BA2 7AY, UK

A bioplastic that has risen in demand in recent years is poly(lactic acid) (PLA), mainly driven by changing attitudes towards the environment coupled with the progression in polymer manufacturing. PLA for instance is used in applications like packaging, cups and food serviceware, films, rigid consumer goods, textiles applications, non-woven products, among many others [6–8]. The global bioplastic packaging consumption alone is projected to rise over 16% yearly [9], highlighting the market potential of PLA.

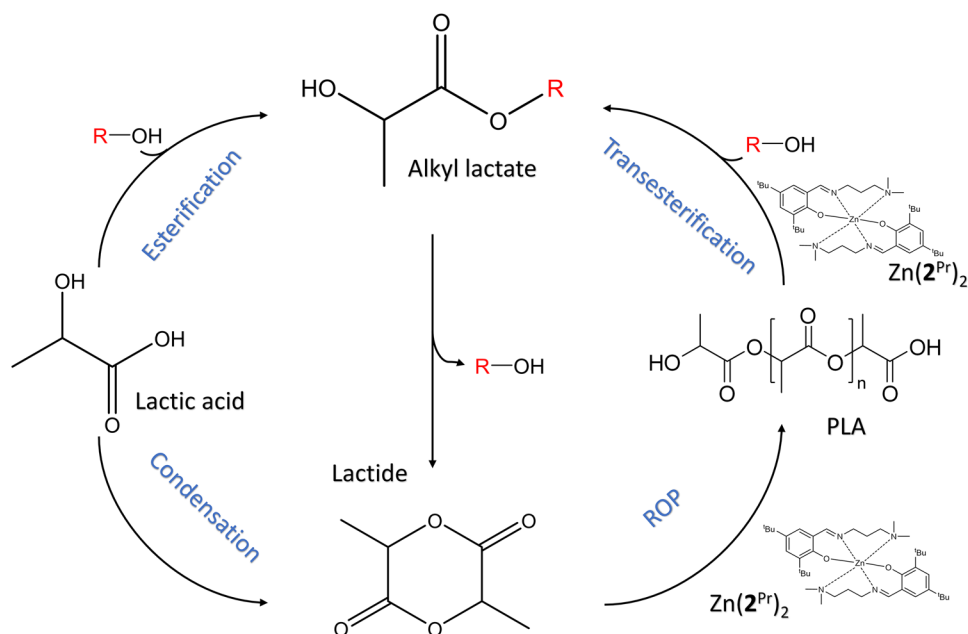
Although PLA is, in principle, biodegradable, in reality under mild conditions the degradation times are slow and result in prolonged persistence [6]. Studies on PLA degradation in terrestrial crude soil indicate little distinction over many weeks; moreover, the central microbial activity causes the pH to rise markedly, endangering the culture and local plant life [10, 11]. In water, at ambient temperatures around 23 °C, similar slow progress is observed, whereas at scarcer thermophilic temperatures, degradation is faster [12]. Sensible PLA waste management is therefore required in order to evade the adverse environmental consequences of persistent PLA [4, 13, 14]. Since potentially harmful management schemes entailing landfilling and incineration offer an unsustainable non-cyclic approach, mechanical recycling is in this case a preferred option [15]. Mechanically recycled waste material, however, become downgraded by means of several recycling loops. Downgraded recycled products suffer from poor performances and are thus of less economic value [16]. Chemical recycling is a promising alternative recycling method over mechanical recycling. Dissimilar to mechanical, chemical recycling of PLA can acquire a product of the same quality as the virgin material [17], or produce valuable

chemicals in an economically and environmentally sustainable manner [18].

Conceivable routes for the chemical recycling of PLA include hydrolytic degradation [19], thermal degradation [20, 21], enzymatic processes [22, 23] and the transesterification reaction [24]. Nevertheless, to achieve significant degradation, the former two must operate under high temperatures exceeding 160 °C, accruing large energy costs. Enzymatic processes present a sustainable and efficient option, yet are limited in the energy sector by a lack of development for stable immobilized biocatalysts, currently hampering its industrial-scale application [25]. Thermal catalytic depolymerisation of PLA, can proceed independently prior to esterification. Noda and Okuyama [26] reported the use of numerous metallic catalysts over a temperature range of 190–245 °C. A conventionally employed stannous catalyst {Sn(Oct)₂} instigated a high lactide (the dimer of lactic acid) yield of 89% in 1 h, outperforming alternatives which exhibited low yields and low activity despite high catalyst loading. However, in addition to high operating temperatures, Sn(oct)₂ is an expensive and toxic catalyst. The hydrolytic depolymerisation under milder temperatures (40–120 °C) and acidic conditions has also been reported [27].

Depolymerisation of PLA, initiated by the addition of a protic low molecular weight alcohol, such as ethanol, proceeds by the transesterification of PLA (Fig. 1) [28]. The product ethyl lactate (EtLa), described as a biodegradable ‘green’ solvent with low toxicity, can be employed in place of established petroleum-derived solvents such as acetone and toluene [29]. EtLa has long found a wide sphere of applications from use in pharmaceutical, food, coating and cosmetic formulations [28]. Additionally, as a fundamental

Fig. 1 Poly(lactic acid) polymerisation and depolymerisation with a Zn(II) catalyst complex and their fit in a circular economy process



reagent, ethanol is readily produced globally from a sustainable biomass feedstock [28]. Research has also demonstrated the possibility of lactide recovery from alkyl lactates, therefore enabling PLA reformation [30–34]. In particular, ethyl lactate seems to attain a greater lactide yield than other low molecular weight alkyl lactates [33]. Furthermore, the successive esterification of lactic acid (or lactide) into lactates directed by an acid catalyst with a protic alcohol has also been shown [35–37], consequently showing the possibility of a circular economy (Fig. 1).

Various catalysed processes have been devised for the transesterification of PLA into lactates [24, 38–43]. Processes include patents for the use of acid catalysts for direct transesterification [40, 44]. DuPont, for instance, has patented a process entailing the production of alkyl lactates alongside a liquid acid catalyst [40]; PLA conversion to EtLa stands at 78% when subjected to 150 °C for 2 h in the presence of H₂SO₄. Since water in the vicinity competes and limits conversion, excess alcohol, catalysts, inert atmosphere and efficient separation are essential for successful alkyl lactate synthesis [41]; also, the quenching and neutralisation steps at the conclusion of a reaction can consume liquid acid catalysts producing undesirable waste salts. Solid acid catalysts, such as silica supported H₂SO₄, present a promising green opportunity that ensures facile separation, reuse of catalyst and reduction in toxic waste disposal costs [45]. Refraining from the employment of acid catalysts, Song et al. [46] reported the potential for novel ionic initiators to control the methanolysis of PLA; 1-butyl-3-methylimidazolium acetate ([Bmim][AcO]) was found to achieve high methyl lactate (MeLa) yields up to 92.5%, whilst operating at a relatively low temperature (115 °C), in 3 h. Further investigations identified the ease of catalyst separation by distillation and the ability for re-use up to 6 times before substantial conversion and yield reduction ensued. Organic catalysts such as triazabicyclodecene (TBD) offer a distinguished route to produce alkyl lactates at high yields in a short time under mild conditions [39]; the use of halogenated solvents was unfortunately necessary, reducing the green credential of the process.

Employing a range of catalysts and microwave heating, Enthaler and co-workers [47–49] have successfully degraded several PLA waste samples into MeLa at temperature higher than 120 °C. The lactate yield varied depending on reaction time, catalyst concentration, sample and temperature.

Recently, Jones et al. [24, 42, 50] utilised a Zn(II) catalyst complex {Zn(1^{Et})₂} in the presence of protic methanol to degrade several neat and post-consumer PLA grades into MeLa. Observations on the depolymerization of PLA into MeLa by Zn(1^{Et})₂ indicated no mass-transfer limitations, a positive correlation between temperature and reaction rate, lower activation energy with increased catalyst loading and an agreement with a 1st order two-step kinetic model [24].

To further establish viability on an industrial-scale, catalyst stability was determined. The post-consumer PLA was successfully degraded to MeLa even with unknown additives in the samples [50]. Building upon the promising work of Jones and co-workers, in the current research, the catalytic depolymerisation of post-consumer PLA samples into EtLa is examined at 50 °C and 90 °C. Furthermore, an alternative catalyst {Zn(2^{Pr})₂} is employed which has been observed as displaying greater activity at lower temperatures than Zn(1^{Et})₂ [42, 43]. Zn(2^{Pr})₂ has also been used for the production of PLA from the ring-opening polymerisation (ROP) of lactide (Fig. 1) [43], demonstrating the utility of the catalyst for both, PLA production and PLA depolymerisation. The research by McKeown et al. [43] on Zn(2^{Pr})₂ (Fig. 2) led to the proposal that not only at 50 °C does the transesterification process become more energy cost-effective but even faster. 90 °C was decided based upon previous literature where at this temperature relatively high yields were achieved in 1 h [24].

Methods and Materials

The reactions were performed in a 300 mL T316 stainless steel stirred jacketed pressure reactor (PARR 4566 series). Control of stirring speed and the monitoring of pressure was conducted using a reactor controller (PARR 4848 series). Internal reactor temperature was controlled by a heating circulator (Julabo HE) which pumped heated oil through the jacket. The internal temperature of the reactor was measured by a Pt100 sensor. The amount of the PLA and catalyst were measured using a OHAUS Explorer Pro balance.

The post-consumer PLA samples studied consisted of a phone case, an infants' toy, a film, a cup and 3D printed material (Fig. 3). The choice of samples was made to demonstrate the applicability of the recycling process on a variety of products with different molecular weights. The

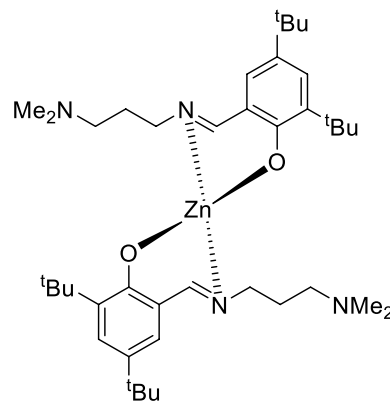


Fig. 2 Structure of the Zn(2^{Pr})₂ catalyst employed in the experiments

Fig. 3 Post-consumer PLA samples used (excluding film): toys (upper left), 3D printed material (bottom left), phone case (centre) and cup (right)



Table 1 PLA samples number average molecular weight (M_n), dispersity (\mathcal{D}) and source

PLA sample	M_n (g mol ⁻¹)	\mathcal{D}	Original source
Phone case	37,600	1.87	Bioserie
Toy	36,050	2.02	Bioserie
Film	69,800	1.65	A. Warne
Cup	45,150	2.08	Vegware
3D Print	65,100	2.12	RS Components

Values include a 0.58 correction factor [24]

number average molecular weight (M_n), dispersity (\mathcal{D}) and source of the post-consumer PLA samples as well as their original source is presented in Table 1.

From the prior experimental work conducted and further statistical analysis it became indicative that the size of the PLA waste particle had very little influence upon the alkyl lactate selectivity and yield at the parameters tested [24]. For the current research, it was then decided that the PLA sample dimensions would not need to be uniform yet still small enough to conform to the reactor volume.

Ethanol absolute (HPLC grade, 99.8% purity) was purchased from Sigma-Aldrich whereas THF solvent (HPLC grade, 99.9% purity, inhibitor free) from Fisher Scientific. Nitrogen (oxygen free) and helium (CP grade) were purchased from BOC.

Catalyst $\text{Zn}(\text{2}^{\text{Pr}})_2$ was prepared under an inert atmosphere using Schlenk line techniques with dried solvents and stored in a glovebox prior to use. Details of the catalyst synthesis can be found elsewhere [43]. Catalyst concentration with respect to the PLA mass was kept constant at 8% throughout all experiments. The PLA sample concentration with respect to total volume was constant at 0.05 g mL⁻¹.

Refractive index gel permeation chromatography (GPC) was used to determine the M_n and \mathcal{D} of the PLA samples (Table 1). GPC was conducted at 1 mL min⁻¹ at 35 °C with

a THF eluent using a PLgel 5 μm MIXED-D 300 \times 7.5 mm column. 11 narrow molecular weight polystyrene standards were used as a reference system.

The experimental procedure was as follows: post-consumer PLA samples were first cut or broken down into sizeable pieces. PLA sample (12.50 g), catalyst (1.00 g), THF (200 mL) and ethanol (50 mL) were charged into the reactor. The reactor vessel was sealed and the stirring speed was set to 870 rpm based on previous studies showing an effect of stirring speed on reaction rate [42]. The reaction temperature was set to either 50 °C or 90 °C. The timing of the reaction commenced with the start of the heating process. The extra time needed to reach 90 °C from 50 °C was around 7 min. The effect of this heating time upon degradation at 90 °C was neglected.

Flushing the system proceeded for at least 20 min with nitrogen to remove any oxygen and moisture to create an inert atmosphere. Samples were collected at 1 h and 3 h and analysed by gas chromatography (GC) and Nuclear Magnetic Resonance spectroscopy (¹H NMR). GC was used to assess the concentration of EtLa. The samples were injected to the GC (Agilent Technologies, 6890 N) by an autosampler (Agilent Technologies, 7683B), to a 30 m \times 0.32 mm ID, 0.25 μm film thickness HP-5 Agilent capillary column. The following conditions were used: helium carrier gas, inlet temperature of 150 °C, 1 μL injection volume, 1:100 split ratio and 250 °C detector temperature. Initial oven temperature of 90 °C (held for 4 min), then 100 °C min⁻¹ ramp to 120 °C (held for 1 min), followed by 100 °C min⁻¹ ramp to 200 °C (held for 3 min). Initial flowrate was 0.7 mL min⁻¹ (held for 5 min), then 100 mL min⁻¹ ramp to 3 mL min⁻¹. The GC was calibrated by preparing a multiple point external standard calibration curve covering the predicted EtLa concentration range with a linear response of the FID detector ($R^2 = 0.999$).

The ¹H NMR analysis was performed in C₆D₆ on a 400 MHz Bruker Avance III spectrometer and referenced to

residual solvent resonances. $^1\text{H NMR}$ determined the amount of internal (*Int*, 5.0–5.1 ppm), Chain-End (*CE*, 4.9–5.0 ppm and 4.1–4.2 ppm) and *EtLa* (4.0–4.1 ppm) methine groups, related to the amounts of PLA, intermediate and product as discussed elsewhere [24]. For clarity, the reaction scheme and the methine group assignation is presented in Fig. 4.

Results and Discussion

The concentrations of EtLa, as determined by GC, at 1 h and 3 h for all samples are presented in Fig. 5. It is clear that as time proceeds, more PLA is degraded and converted into valuable EtLa across each sample series. It can be observed

that at 1 h, the EtLa concentration at 90 °C exceeds that at 50 °C for each PLA sample. However, the same pattern cannot be associated with the 3 h time where both, the cup and 3D print material samples attain a higher product concentration at 50 °C. This observation is in agreement with the work conducted by Román-Ramírez et al. [42] proposing that the $\text{Zn}(2^{\text{Pr}})_2$ complex demonstrates greater activity at lower temperatures. The remaining samples indicate perhaps a more predictable catalytic behaviour, such as that observed for the $\text{Zn}(1^{\text{Et}})_2$ complex [42], where at higher temperatures over a specific time, greater yields and catalyst activity become apparent. For example, the PLA film, markedly generated the highest EtLa concentration of all tests at 70.8 g dm^{-3} ($0.599 \text{ mol dm}^{-3}$) over 3 h at

Fig. 4 Reaction scheme and typical $^1\text{H NMR}$ spectrum with methine group assignations for a PLA degradation sample (3D Print)

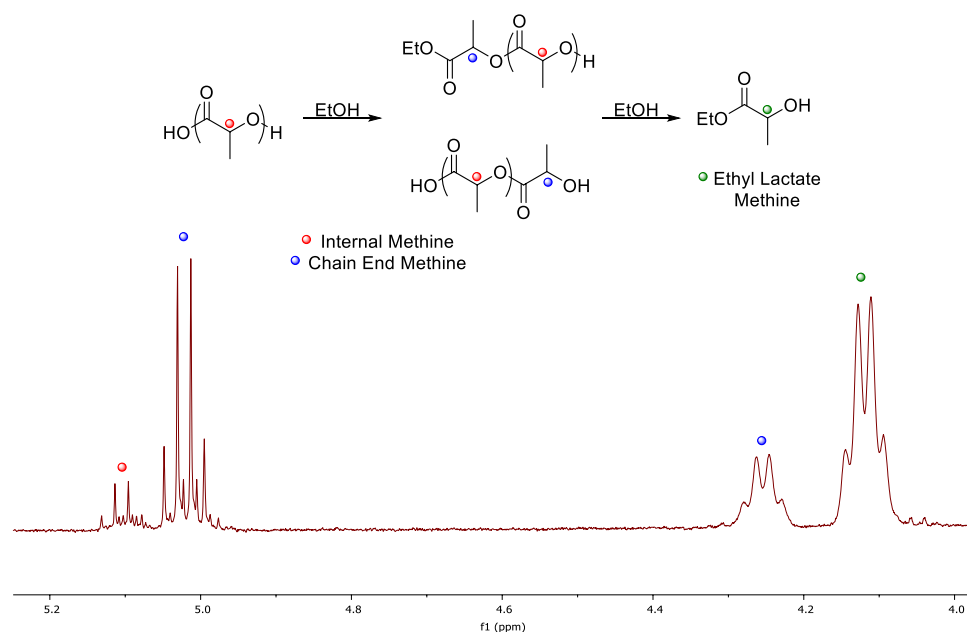
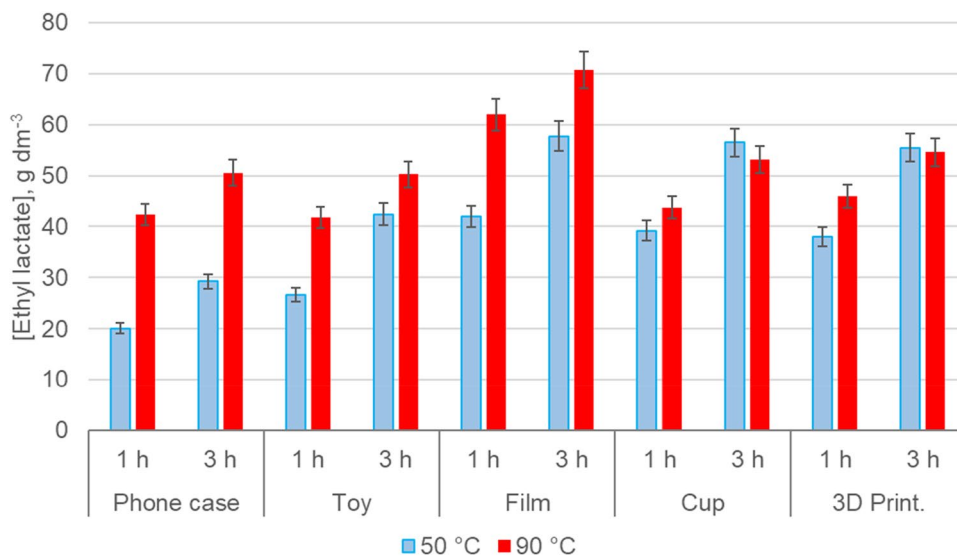


Fig. 5 Ethyl lactate concentrations as determined by GC. Error bars corresponds to 5% estimated error



90 °C, which is closer to the maximum theoretical value of 82 g dm^{-3} (assuming the whole sample mass corresponds to PLA only). Since the low PLA film thickness ($40 \text{ }\mu\text{m}$), it is possible that enhanced mass transfer more dramatically improves faster dissolution, resulting in improved degradation and finally in higher yields. However, considering the findings of Román-Ramírez et al. [24] reporting no mass transfer limitations after testing various rpm and particle sizes of neat PLA grades, it is plausible that the PLA film could also contain fewer additives compared with the rest of the samples. In contrast with every other test, the phone case and toy exhibited little dissolution at 50 °C and a low EtLa production even after 3 h. Dissimilar to the PLA film, structurally the phone case and toy are designed to be durable, hard and strong in order to successfully fulfil their intended functions. Numerous additives present in PLA products, aimed to improve their specific performance, can also affect the reaction kinetics and the output composition. Common additives found include colorants, plasticisers, light stabilisers, thickeners and anti-bacterial agents [51]. Despite their relatively low M_n (Table 1), the phone case and toy were structurally strong, likely related to the presence of additives [51, 52]. In fact, $^1\text{H NMR}$ analysis on the toy sample (spectrum not shown) revealed the signals of compounds other than the ones assigned for PLA, intermediates and product; however, a complete characterization was not possible. Moreover, the sample piece dimensions entering the reactor were relatively large (around 15 mm) and could pose a mass transfer limitation. It is conceivable that the presence or lack of certain additives in bioplastics can not only improve their performance but inhibit dissolution [6, 52]. For example, phthalates which are additives commonly used as plasticisers to enhance durability present a

challenge when attempting to recycle [53]. Equally, cross-linking agents, for instance, have been reported to lower degradation rates [6]. However, when the reaction proceeded at 90 °C, both samples, phone case and toy, were observed to fully dissolve and attain almost identical EtLa concentrations between 0.425 and $0.428 \text{ mol dm}^{-3}$ after 3 h. Furthermore, these values are comparable to most PLA sample series at 90 °C. Therefore, depending upon the PLA waste composition, the temperature employed and perhaps the particle size, it is evident that if poor sample dissolution occurs, the yield of EtLa is affected.

It was initially postulated that there may exist a strong link between M_n , D , and the degradation time; however, the results did not show a direct correlation. For instance, the toy has a D of 2.02, intermediate of the cup and film, yet generated less EtLa than both after 3 h. Despite the difference in M_n between the cup and 3D print material ($20,000 \text{ g mol}^{-1}$) similar final concentrations were obtained at both temperatures. The lack of correlation of these properties intrinsic to the biopolymers, further suggests that additives or the lack thereof in bioplastics, and mass transfer limitations, account for the EtLa variation across the PLA samples.

The values of the concentrations for the *Int*, *CE* and *EtLa* methine groups for each sample are presented in Table 2, and the corresponding calculated conversion (X), selectivity (S) and yield (Y) in Figs. 6, 7, and 8. Error bars correspond to 5% error based on previous studies [50]. High levels of degradation (conversions $> 85\%$) are achieved for all the post-consumer PLA samples demonstrating the versatility of the depolymerisation system. Conversions at 3 h were, as expected, higher than the 1 h mark. The degradation at 90 °C generally resulted in the higher conversions than at 50 °C, except for the cup and

Fig. 6 PLA conversions.
 $Conversion = 1 - \frac{Int}{100}$

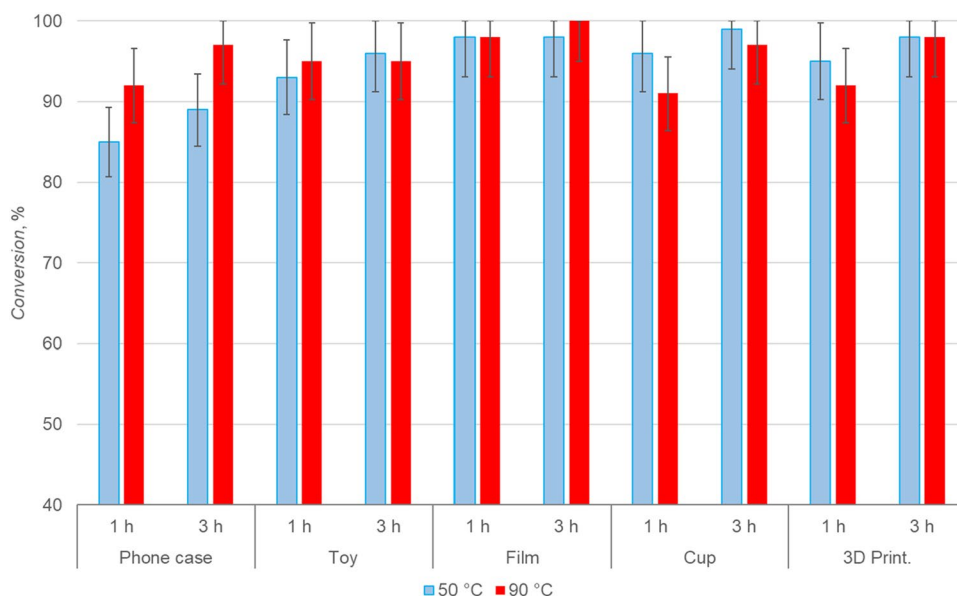
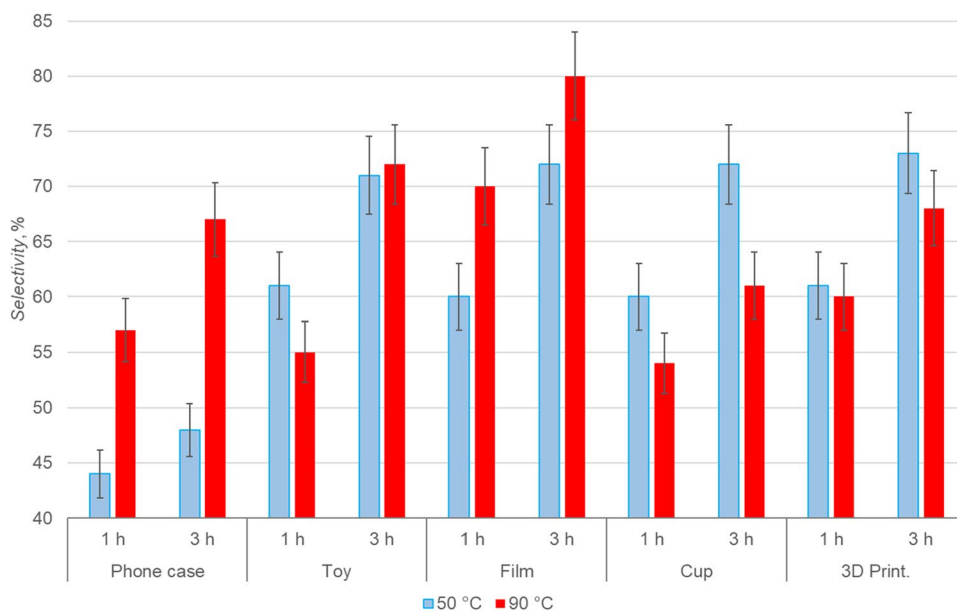
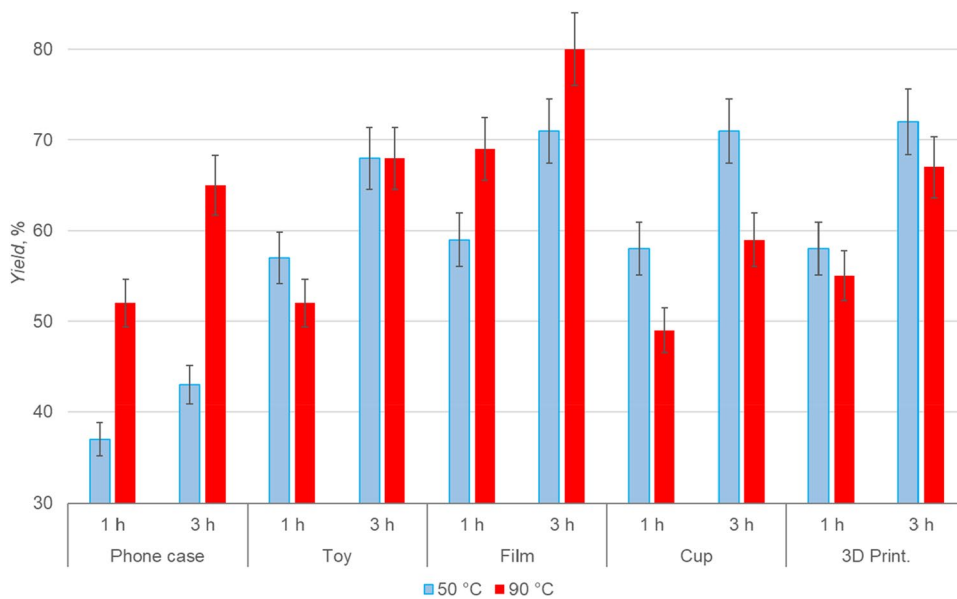


Fig. 7 Ethyl lactate selectivities.

$$\text{Selectivity} = \frac{\text{EtLa}}{100 - \text{Int}}$$

**Fig. 8** Ethyl lactate yields.

$$\text{Yield} = \text{Conversion} \times \text{Selectivity}$$

**Table 2** Concentration of Internal (*Int*), Chain-end (*CE*) and ethyl lactate (*EtLa*) methine groups determined by ^1H NMR analysis

PLA sample	Time (h)	<i>Int</i> , %		<i>CE</i> , %		<i>EtLa</i> , %	
		50 °C	90 °C	50 °C	90 °C	50 °C	90 °C
Phone case	1	15	8	48	40	37	52
	3	11	3	46	32	43	65
Toy	1	7	5	36	43	57	52
	3	4	5	29	26	68	68
Film	1	2	2	39	29	59	69
	3	2	0	28	20	71	80
Cup	1	4	9	39	42	58	49
	3	1	3	28	38	71	59
3D Print	1	5	8	37	37	58	55
	3	2	2	26	31	72	67

the 3D print material. A conversion of 100% was possible at 3 h at 90 °C for the film, most likely related to its high solubility. The lowest conversion was achieved by the phone case. Similar trends of the conversion are observed for the selectivity and yield. A maximum 80% yield was obtained for the film whereas the lowest value was given by the phone case, due to its poor solubility, particularly at 50 °C, and possible high additives content.

Comparing the work reported by Román-Ramírez et al. [24] after 1 h and under 90 °C, the various PLA neat grades displayed typically greater yields over the current research waste samples. For instance, the highest EtLa yield reached 69% whereas the MeLa yield peaked at 100% for the virgin polymer (NatureWorks Ingeo™ 4043D grade). Reasoning for such observations previously discussed include the presence of additives and possible mass transfer limitations. However, it is also conceivable that the protic agent, ethanol, employed in the present work, could be more sterically hindered than methanol on approach to the carbonyl centre. A study by Ali [54] investigated this factor through the esterification of an acid with alcohols and discovered that a greater carbon chain length decreases conversion. Similarly, Carné Sánchez and Collinson [55] found higher reactivity of ethanol compared with methanol when studying the alcoholysis of PLA. Hence, in the current work, alkyl lactate production with methanol may induce a higher yield than ethanol in this manner. Another potential explanation is the limit in catalytic activity at such temperatures. As discussed, previous research determined that at lower temperatures the $\text{Zn}(\mathbf{2}^{\text{Pr}})_2$ complex was found to be more active than $\text{Zn}(\mathbf{1}^{\text{Et}})_2$ [42], which is in agreement with the experimental observations in this work. For example, between 40 and 60 °C under the $\text{Zn}(\mathbf{1}^{\text{Et}})_2$ catalyst, Román-Ramírez, et al. [24] achieved yields ranging from 0 to 48%. Whereas, in the current research at 50 °C over 1 h, most yields exceeded 50%. These results indicate that the $\text{Zn}(\mathbf{2}^{\text{Pr}})_2$ complex may be used effectively for catalytic degradation at low temperatures, which implicates lower operating costs, higher profit margins and more incentive to utilise such a process.

Previous research conducted on the chemical recycling of PLA into alkyl lactates exhibit high yields under greater temperatures. Petrus et al. [41] using an Mg complex demonstrated the possibility to direct the transesterification of PLA. Despite exceptionally high EtLa yields approaching 86% over 1 h, the use of high temperatures (200 °C) could reduce the likeliness of a profitable process. As already mentioned, under milder conditions of 100–150 °C, relatively high yield routes in several hours are permissible such as those reported by Brake [40] and Song et al. [46]. These observations can be explained by a trade-off

between rising temperatures and faster kinetics, along with varying catalytic activity.

Conclusions

The present work investigated the catalytic depolymerisation of five post-consumer PLA samples into the green solvent ethyl lactate. Conforming to a circular economy, the transesterification of waste PLA with protic ethanol is directed by a propylenediamine $\text{Zn}(\text{II})$ complex. This complex demonstrated greater activity at lower temperatures deriving in higher ethyl lactate yields and selectivities at 50 °C over 3 h than at 90 °C for the cup and 3D print samples. The durable phone case and toys suffered from poor dissolution at 50 °C resulting in lower conversions, selectivities and yields, whereas the opposite was the case for the fine film sample. Polymer molecular weight and dispersity offered little explanation on conversion, selectivity and yield, it was therefore surmised that the rate of PLA waste sample degradation was dependent upon additives and the extent of sample dissolution. Other suggestions on the effect on yield are the steric hindrance of ethanol compared with methanol. Despite the presence of unknown additives, the catalytic system can produce valuable ethyl lactate from a variety of post-consumer PLA samples.

Acknowledgements The authors would like to acknowledge the financial support of ESPRC (EP/P016405/1). The Food Microstructure research group at the University of Birmingham are acknowledged for their donation of 3D printing samples. A. Warne Co. Ltd is acknowledged for their donation of PLA film.

Data Availability Data associated with this publication is available free of charge at edata.bham.ac.uk.

Open Access This article is licensed under a Creative Commons Attribution 4.0 International License, which permits use, sharing, adaptation, distribution and reproduction in any medium or format, as long as you give appropriate credit to the original author(s) and the source, provide a link to the Creative Commons licence, and indicate if changes were made. The images or other third party material in this article are included in the article's Creative Commons licence, unless indicated otherwise in a credit line to the material. If material is not included in the article's Creative Commons licence and your intended use is not permitted by statutory regulation or exceeds the permitted use, you will need to obtain permission directly from the copyright holder. To view a copy of this licence, visit <http://creativecommons.org/licenses/by/4.0/>.

References

1. British Plastics Federation (2020) Plastics applications. <https://www.bpf.co.uk/plastipedia/applications/default.aspx>. Accessed 15 Jan 2020

2. Geyer R, Jambeck JR, Law KL (2017) *Sci Adv* 3:e1700782. <https://doi.org/10.1126/sciadv.1700782>
3. Carraher CE Jr (2003) *Polymer chemistry*, 6th edn. Marcel Dekker Inc, New York
4. Li WC, Tse HF, Fok L (2016) *Sci Total Environ* 566–567:333. <https://doi.org/10.1016/j.scitotenv.2016.05.084>
5. Yu D (2016) Polychlorinated biphenyls (PCBs) toxicity. Department of Health and Human Services. Agency for Toxic Substances and Disease Registry (ATSDR), U.S. <https://www.atsdr.cdc.gov/csem/csem.asp?csem=30&po=10>
6. Niaounakis M (2013) *Biopolymers: reuse, recycling, and disposal*. Elsevier, Amsterdam
7. Sin LT, Rahmat AR, Rahman WAWA (2013) Applications of poly(lactic acid). In: Ebnesajjad S (ed) *Poly(lactic acid)*. William Andrew Publishing, Oxford, p 301
8. Van den Eynde M, Van Puyvelde P (2018) 3D printing of poly(lactic acid). In: Di Lorenzo ML, Androsch R (eds) *Industrial applications of poly(lactic acid)*. Springer, Cham, p 139
9. Smithers (2019) The future of bioplastics for packaging to 2024. <https://www.smithers.com/services/market-reports/packaging/bioplastics-for-packaging-to-2024>. Accessed July 2019
10. Torres A, Li SM, Roussos S, Vert M (1996) *J Appl Polym Sci* 62:2295. [https://doi.org/10.1002/\(SICI\)1097-4628\(19961226\)62:13<2295::AID-APP14>3.0.CO;2-2](https://doi.org/10.1002/(SICI)1097-4628(19961226)62:13<2295::AID-APP14>3.0.CO;2-2)
11. Wilfred O, Tai H, Marriott R et al (2018) *Int J Nano Res* 1:1
12. Ndazi BS, Karlsson S (2011) *eXPRESS Polym Lett* 5:119. <https://doi.org/10.3144/expresspolymlett.2011.13>
13. Betts K (2008) *Environ Sci Technol* 42:8996. <https://doi.org/10.1021/es802970v>
14. de Souza Machado AA, Kloas W, Zarfl C et al (2018) *Glob Change Biol* 24:1405. <https://doi.org/10.1111/gcb.14020>
15. Hopewell J, Dvorak R, Kosior E (2009) *Philos Trans R Soc A* 364:2115. <https://doi.org/10.1098/rstb.2008.0311>
16. Ragaert K, Delva L, Van Geem K (2017) *Waste Manag* 69:24. <https://doi.org/10.1016/j.wasman.2017.07.044>
17. Piemonte V, Sabatini S, Gironi F (2013) *J Polym Environ* 21:640. <https://doi.org/10.1007/s10924-013-0608-9>
18. Hong M, Chen EYX (2017) *Green Chem* 19:3692. <https://doi.org/10.1039/C7GC01496A>
19. Piemonte V, Gironi F (2013) *J Polym Environ* 21:313. <https://doi.org/10.1007/s10924-012-0547-x>
20. Herrera-Kao WA, Loría-Bastarrachea MI, Pérez-Padilla Y et al (2018) *Polym Bull* 75:4191. <https://doi.org/10.1007/s00289-017-2260-3>
21. Vogel C, Siesler HW (2008) *Macromol Symp* 265:183. <https://doi.org/10.1002/masy.200850520>
22. Oda Y, Yonetsu A, Urakami T, Tonomura K (2000) *J Polym Environ* 8:29. <https://doi.org/10.1023/A:1010120128048>
23. Lee SH, Kim IY, Song WS (2014) *Macromol Res* 22:657. <https://doi.org/10.1007/s13233-014-2107-9>
24. Román-Ramírez LA, McKeown P, Jones MD, Wood J (2019) *ACS Catal* 1:409. <https://doi.org/10.1021/acscatal.8b04863>
25. Chapman J, Ismail A, Dinu C (2018) *Catalysts* 8:1. <https://doi.org/10.3390/catal8060238>
26. Noda M, Okuyama H (1999) *Chem Pharm Bull* 47:467. <https://doi.org/10.1248/cpb.47.467>
27. Codari F, Lazzari S, Soos M et al (2012) *Polym Degrad Stab* 97:2460. <https://doi.org/10.1016/j.polymdegradstab.2012.06.026>
28. Pereira CSM, Silva VMTM, Rodrigues AE (2011) *Green Chem* 13:2658. <https://doi.org/10.1039/C1GC15523G>
29. Doble M, Kruthiventi AK (2007) *Green chemistry and engineering*. Elsevier, Amsterdam
30. Volodymyr B, Varvarin A, Svetlana L, Ya G (2019) *Ukr Chem J* 85:31. <https://doi.org/10.33609/0041-6045.85.7.2019.31-37>
31. De Clercq R, Dusselier M, Poleunis C et al (2018) *ACS Catal* 8:8130. <https://doi.org/10.1021/acscatal.8b02216>
32. De Clercq R, Dusselier M, Makshina E, Sels BF (2018) *Angew Chem Int Ed* 57:3074. <https://doi.org/10.1002/anie.201711446>
33. Upare PP, Hwang YK, Chang J-S, Hwang DW (2012) *Ind Eng Chem Res* 51:4837. <https://doi.org/10.1021/ie202714n>
34. Egiazaryan TA, Makarov VM, Moskalev MV et al (2019) *Mendeleev Commun* 29:648. <https://doi.org/10.1016/j.mencom.2019.11.014>
35. Asthana NS, Kolah AK, Vu DT et al (2006) *Ind Eng Chem Res* 45:5251. <https://doi.org/10.1021/ie0513604>
36. Delgado P, Sanz MT, Beltrán S (2008) *Sep Purif Technol* 64:78. <https://doi.org/10.1016/j.seppur.2008.08.002>
37. Martino-Gauchi G, Teissier R (2007) Continuous method for preparing ethyl lactate, U.S. Patent 7297809
38. Hirao K, Nakatsuchi Y, Ohara H (2010) *Polym Degrad Stab* 95:925. <https://doi.org/10.1016/j.polymdegradstab.2010.03.027>
39. Leibfarth FA, Moreno N, Hawker AP, Shand JD (2012) *J Polym Sci Part A* 50:4814. <https://doi.org/10.1002/pola.26303>
40. Brake LD (1993) Preparation of alkyl esters by depolymerization U.S. Patent 5264617
41. Petrus R, Bykowski D, Sobota P (2016) *ACS Catal* 6:5222. <https://doi.org/10.1021/acscatal.6b01009>
42. Román-Ramírez LA, McKeown P, Jones MD, Wood J (2020) *ACS Omega* 5:5556. <https://doi.org/10.1021/acsomega.0c00291>
43. McKeown P, Román-Ramírez LA, Bates S et al (2019) *Chemsuschem* 12:5233. <https://doi.org/10.1002/cssc.201902755>
44. Wu M, He W (1995) Process of manufacture of ethyl lactate, C.N. Patent 1102180
45. Gupta P, Paul S (2014) *Catal Today* 236:153. <https://doi.org/10.1016/j.cattod.2014.04.010>
46. Song X, Zhang X, Wang H et al (2013) *Polym Degrad Stab* 98:2760. <https://doi.org/10.1016/j.polymdegradstab.2013.10.012>
47. Alberti C, Damps N, Meißner RRR, Enthaler S (2019) *ChemistrySelect* 4:6845. <https://doi.org/10.1002/slct.201901316>
48. Alberti C, Damps N, Meißner RRR et al (2019) *Adv Sustain Syst.* <https://doi.org/10.1002/adssu.201900081>
49. Hofmann M, Alberti C, Scheliga F et al (2020) *Polym Chem* 11:2625. <https://doi.org/10.1039/D0PY00292E>
50. Román-Ramírez LA, McKeown P, Shah C et al (2020) *Ind Eng Chem Res.* <https://doi.org/10.1021/acs.iecr.0c01122>
51. British Plastics Federation Plastics Additives. <https://www.bpf.co.uk/plastipedia/additives/default.aspx>. Accessed 25 Oct 2019
52. Hahladakis JN, Velis CA, Weber R et al (2018) *J Hazard Mater* 344:179. <https://doi.org/10.1016/j.jhazmat.2017.10.014>
53. Pivnenko K, Eriksen MK, Martín-Fernández JA et al (2016) *Waste Manag* 54:44. <https://doi.org/10.1016/j.wasman.2016.05.014>
54. Ali SH (2009) *Int J Chem Kinet* 41:432. <https://doi.org/10.1002/kin.20416>
55. Carné Sánchez A, Collinson SR (2011) *Eur Polym J* 47:1970. <https://doi.org/10.1016/j.eurpolymj.2011.07.013>

Publisher's Note Springer Nature remains neutral with regard to jurisdictional claims in published maps and institutional affiliations.