

LONDON
SCHOOL of
HYGIENE
& TROPICAL
MEDICINE



Kay, EJ; Yates, LE; Terra, VS; Cuccui, J; Wren, BW (2016) Recombinant expression of *Streptococcus pneumoniae* capsular polysaccharides in *Escherichia coli*. *Open Biology*, 6. p. 150243. ISSN 2046-2441
DOI: [10.1098/rsob.150243](https://doi.org/10.1098/rsob.150243)

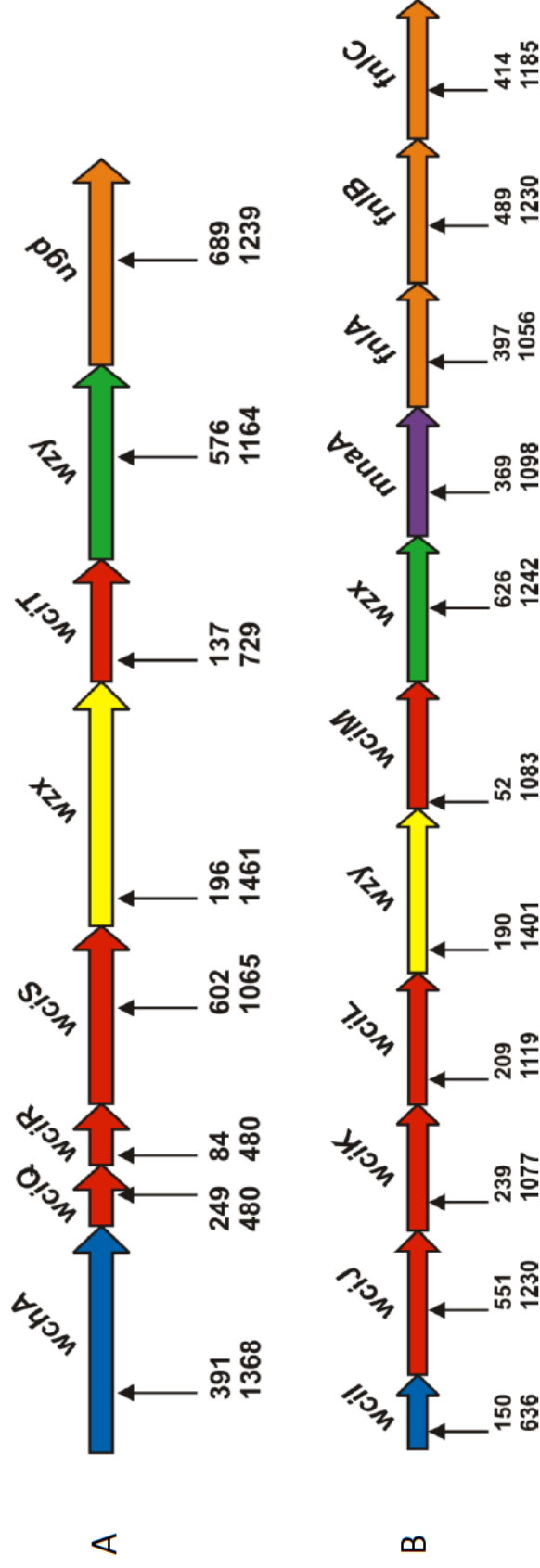
Downloaded from: <http://researchonline.lshtm.ac.uk/2545690/>

DOI: [10.1098/rsob.150243](https://doi.org/10.1098/rsob.150243)

Usage Guidelines

Please refer to usage guidelines at <http://researchonline.lshtm.ac.uk/policies.html> or alternatively contact researchonline@lshtm.ac.uk.

Available under license: <http://creativecommons.org/licenses/by/2.5/>



Supplementary Fig 1. Location of transposon insertion sites within the cloned capsule locus. A) Transposon location in pB-8, the cloned serotype 8 locus. B) Transposon location in pB-4, the cloned serotype 4 locus. Genes are represented by coloured arrows: undecaprenyltransferase, blue; glycosyltransferases, red; flippase, yellow; polymerase, green; and sugar biosynthesis enzymes, purple or orange. The approximate location of insertion of the transposon is indicated by the vertical black arrows; the top number indicates the insertion site of the transposon in bp from 5' end of the gene, the length of which is shown by the bottom number in bp.