

LONDON  
SCHOOL of  
HYGIENE  
& TROPICAL  
MEDICINE



Abdulla, S; Ashley, EA; Bassat, Q; Bethell, D; Bjorkman, A; Borrmann, S; D'Alessandro, U; Dahal, P; Day, NP; Diakite, M; Djimde, AA; Dondorp, AM; Duong, S; Edstein, MD; Fairhurst, RM; Faiz, MA; Falade, C; Flegg, JA; Fogg, C; Gonzalez, R; Greenwood, B; Guerin, PJ; Guthmann, JP; Hamed, K; Hien, TT; Htut, Y; Juma, E; Lim, P; Martensson, A; Mayxay, M; Mokuolu, OA; Moreira, C; Newton, P; Noedl, H; Nosten, F; Ogutu, BR; Onyamboko, MA; Owusu-Agyei, S; Phyto, AP; Premji, Z; Price, RN; Pukrittayakamee, S; Ramharter, M; Sagara, I; Se, Y; Suon, S; Stepniewska, K; Ward, SA; White, NJ; Winstanley, PA; Grp, WPCS (2015) Baseline data of parasite clearance in patients with falciparum malaria treated with an artemisinin derivative: an individual patient data meta-analysis. *Malaria Journal*, 14. ISSN 1475-2875 DOI: <https://doi.org/10.1186/s12936-015-0874-1>

Downloaded from: <http://researchonline.lshtm.ac.uk/2380386/>

DOI: [10.1186/s12936-015-0874-1](https://doi.org/10.1186/s12936-015-0874-1)

#### Usage Guidelines

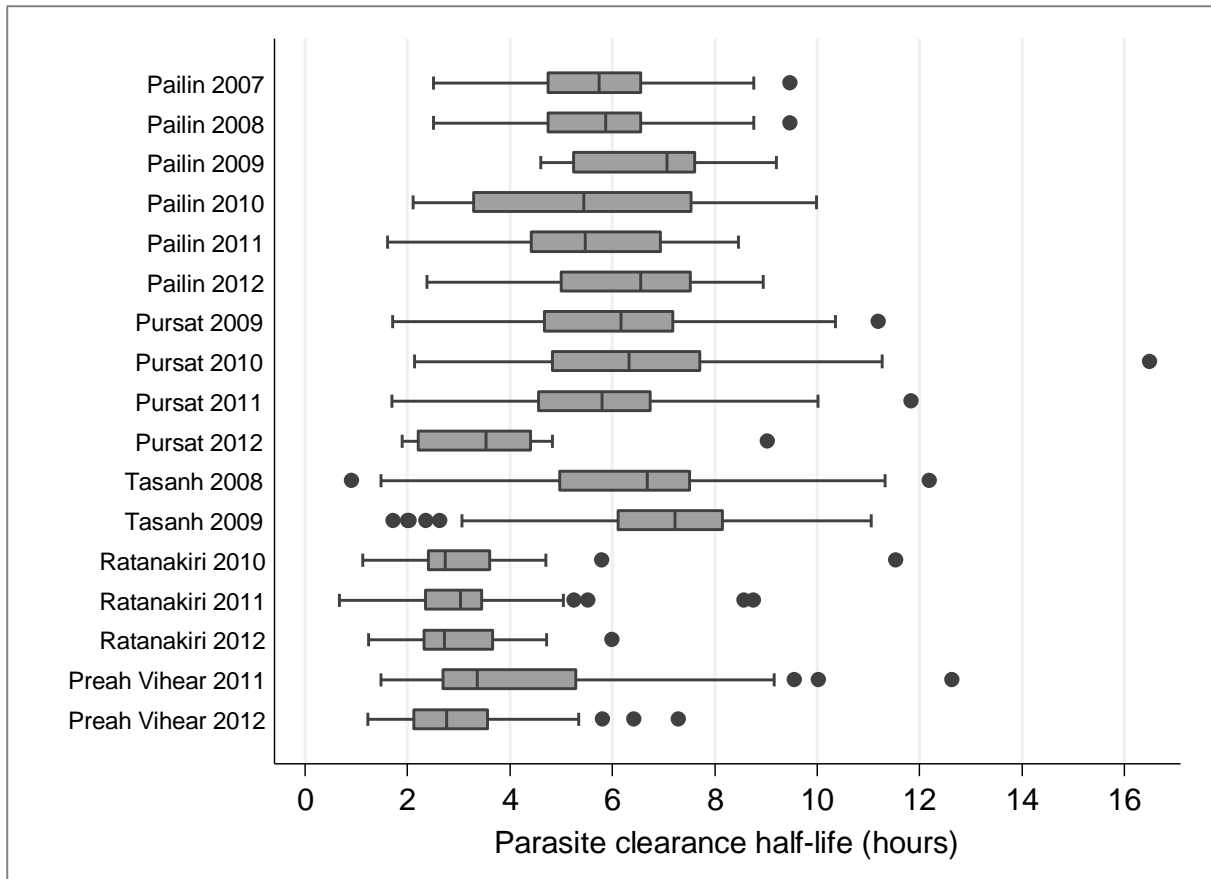
Please refer to usage guidelines at <http://researchonline.lshtm.ac.uk/policies.html> or alternatively contact [researchonline@lshtm.ac.uk](mailto:researchonline@lshtm.ac.uk).

Available under license: <http://creativecommons.org/licenses/by/2.5/>

Additional file 3

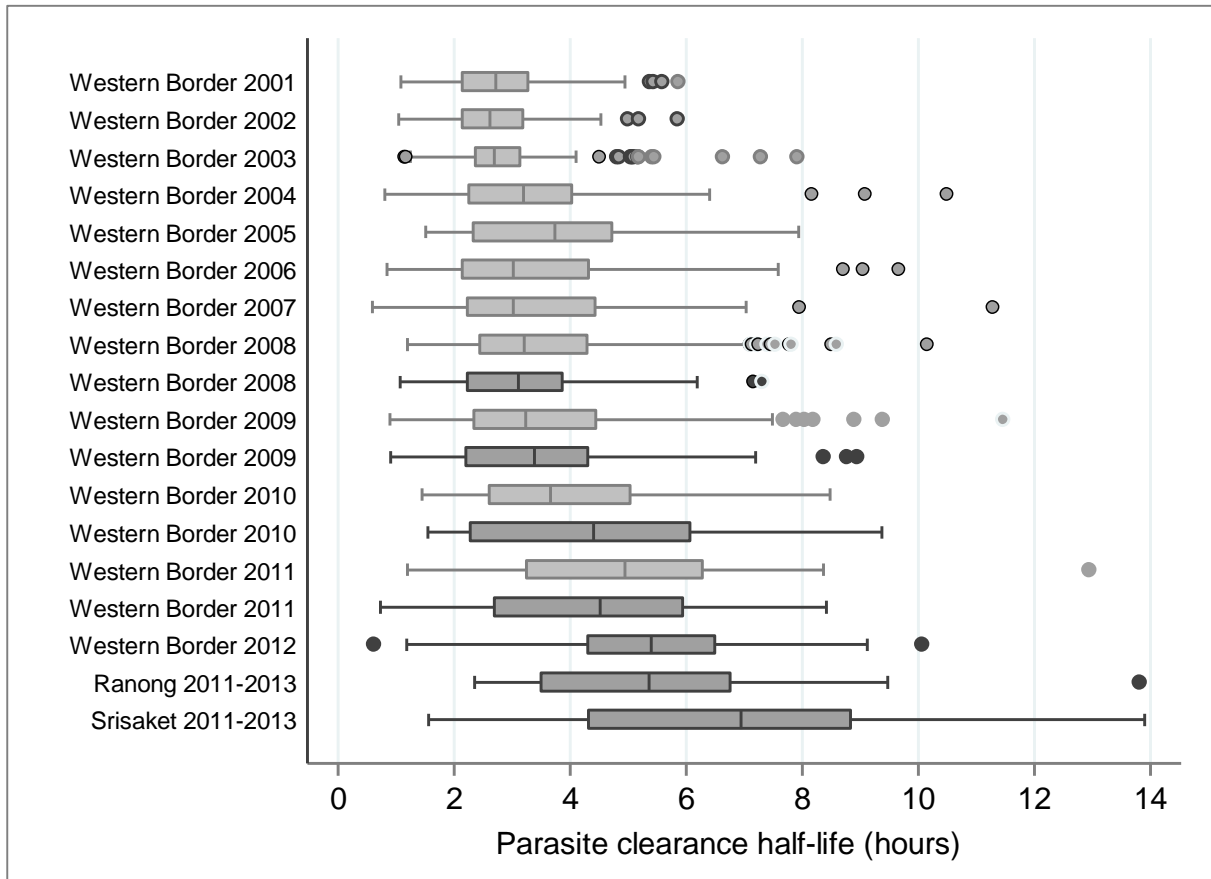
Distribution of  $PC_{1/2}$  by study location and year

**Figure S1 Distribution of  $PC_{1/2}$  in Cambodia in patients treated with artesunate alone in the first 72 hours or artesunate and mefloquine**

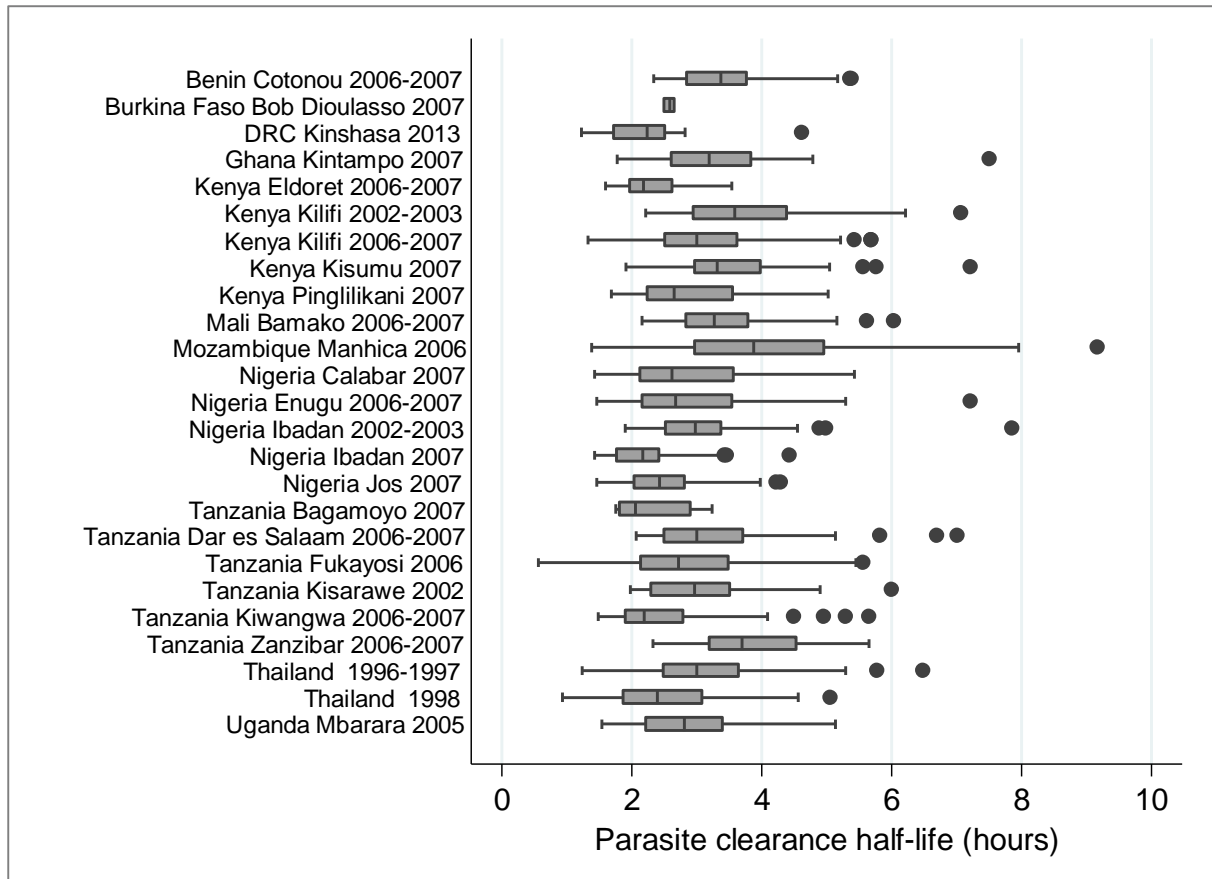


**Figure S2. Distribution of  $PC_{1/2}$  in western Thailand in patients treated with artesunate alone in the first 48 hours or in combination with mefloquine**

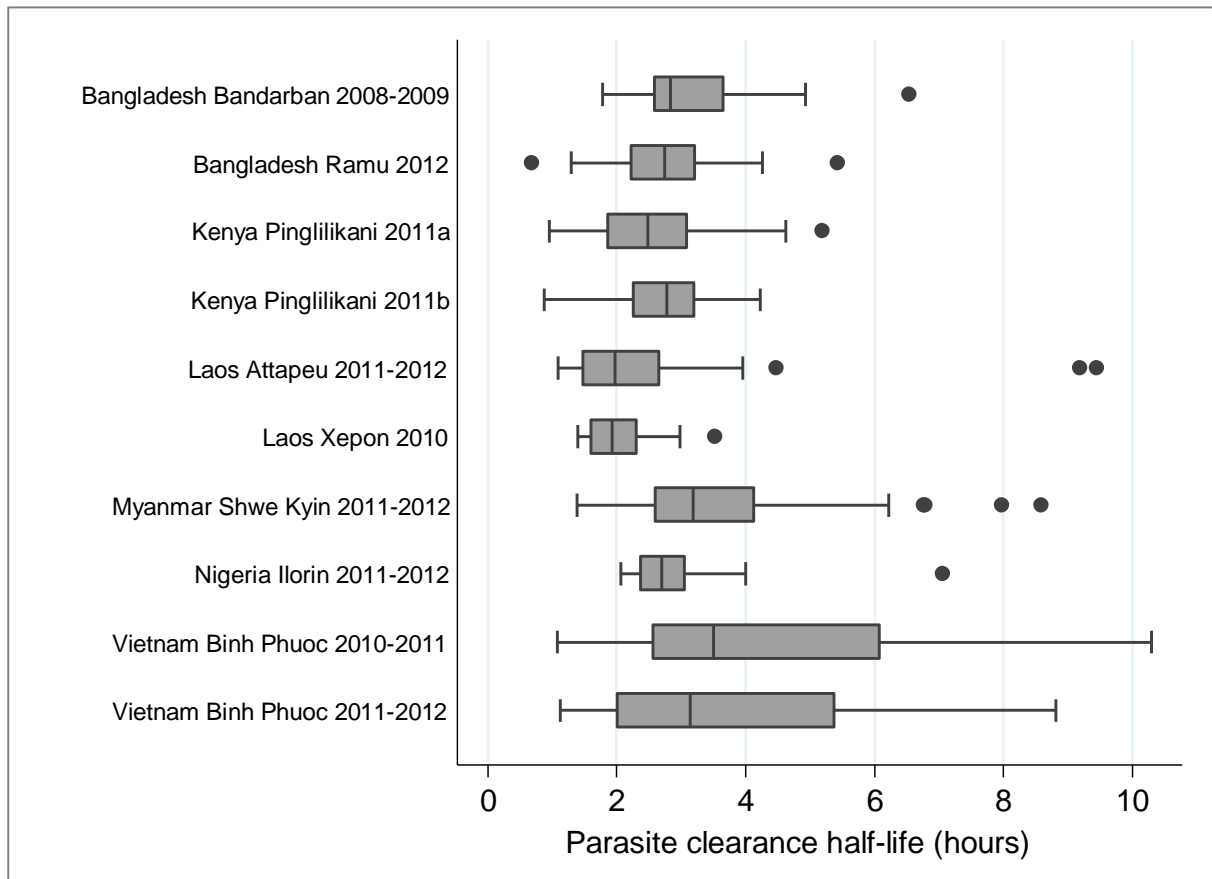
Light grey bars represent data from the study in hyperparasitaemic patients, dark grey bars represent data from studies in uncomplicated malaria.



**Figure S3. Distribution of PC<sub>1/2</sub> in patients treated with a standard artemether-lumefantrine regimen**



**Figure S4. Distribution of  $PC_{1/2}$  in patients treated with 2 mg/kg/day artesunate alone or in combination with other drugs (in all areas except Thailand and Cambodia)**



**Figure S5. Distribution of PC<sub>1/2</sub> in patients treated with 4 mg/kg/day artesunate alone or in combination with other drugs (in all areas except Thailand and Cambodia)**

