

LONDON  
SCHOOL of  
HYGIENE  
& TROPICAL  
MEDICINE



Chowdhary, N; Anand, A; Dimidjian, S; Shinde, S; Weobong, B; Balaji, M; Hollon, SD; Rahman, A; Wilson, GT; Verdelli, H; Araya, R; King, M; Jordans, MJ; Fairburn, C; Kirkwood, B; Patel, V (2015) The Healthy Activity Program lay counsellor delivered treatment for severe depression in India: systematic development and randomised evaluation. *The British journal of psychiatry* , 208 (4). pp. 381-8. ISSN 0007-1250 DOI: 10.1192/bjp.bp.114.161075

Downloaded from: <http://researchonline.lshtm.ac.uk/2331801/>

DOI: [10.1192/bjp.bp.114.161075](https://doi.org/10.1192/bjp.bp.114.161075)

#### Usage Guidelines

Please refer to usage guidelines at <http://researchonline.lshtm.ac.uk/policies.html> or alternatively contact [researchonline@lshtm.ac.uk](mailto:researchonline@lshtm.ac.uk).

Available under license: <http://creativecommons.org/licenses/by/2.5/>

# The Healthy Activity Program lay counsellor delivered treatment for severe depression in India: systematic development and randomised evaluation

Neerja Chowdhary, Arpita Anand, Sona Dimidjian, Sachin Shinde, Benedict Weobong, Madhumitha Balaji, Steven D. Hollon, Atif Rahman, G. Terence Wilson, Helena Verdelli, Ricardo Araya, Michael King, Mark J. D. Jordans, Christopher Fairburn, Betty Kirkwood and Vikram Patel

## Background

Reducing the global treatment gap for mental disorders requires treatments that are economical, effective and culturally appropriate.

## Aims

To describe a systematic approach to the development of a brief psychological treatment for patients with severe depression delivered by lay counsellors in primary healthcare.

## Method

The treatment was developed in three stages using a variety of methods: (a) identifying potential strategies; (b) developing a theoretical framework; and (c) evaluating the acceptability, feasibility and effectiveness of the psychological treatment.

## Results

The Healthy Activity Program (HAP) is delivered over 6–8 sessions and consists of behavioral activation as the core psychological framework with added emphasis on strategies such as problem-solving and activation of social networks. Key elements to improve acceptability and feasibility are

also included. In an intention-to-treat analysis of a pilot randomised controlled trial (55 participants), the prevalence of depression (Beck Depression Inventory II  $\geq 19$ ) after 2 months was lower in the HAP than the control arm (adjusted risk ratio = 0.55, 95% CI 0.32–0.94,  $P = 0.01$ ).

## Conclusions

Our systematic approach to the development of psychological treatments could be extended to other mental disorders. HAP is an acceptable and effective brief psychological treatment for severe depression delivered by lay counsellors in primary care.

## Declaration of interest

None.

## Copyright and usage

© The Royal College of Psychiatrists 2015. This is an open access article distributed under the terms of the Creative Commons Attribution (CC BY) licence.

The 2010 Global Burden of Disease reported that depression ranks second in the league table of years of life lived with disability<sup>1</sup> with a mean population point prevalence of about 5%.<sup>2</sup> Social factors, particularly those related to economic or social disadvantages such as low education and violence, are major determinants.<sup>3</sup> Depression is associated with profound functional impairment, increased mortality and a range of other global health concerns (for example poor infant growth,<sup>4</sup> diabetes, cardiovascular disease and HIV<sup>5</sup>). A key grand challenge in global mental health is to develop and evaluate psychological treatments that can be delivered economically and appropriately.<sup>6</sup> There is a robust evidence base in high-income countries that supports the efficacy of antidepressant medication and structured psychological treatments, particularly for moderate and severe depression.<sup>7</sup> However, most people with depression do not receive either of these treatments.<sup>8,9</sup> This so-called treatment gap is close to 90% in some countries.<sup>9</sup> Adapting 'off the shelf' treatments, which have been developed in 'Western' cultural contexts for delivery by mental health professionals, to low- and middle-income countries has been associated with low acceptability and delivery challenges.<sup>10</sup> The scarcity of mental health specialists in low- and middle-income countries, and the fact that even fewer work in primary care settings where most patients with depression present, has led to a focus on the role of non-specialist health workers in delivering treatments.<sup>11</sup> Task-sharing, in which

provision of psychological treatments are moved from specialists to workers with fewer qualifications following task-specific training and close supervision, has been shown to be an effective healthcare strategy to address this supply-side barrier.<sup>12</sup> Ensuring contextual appropriateness would be expected to enhance patient acceptability and address demand-side barriers.

The work described in this paper was carried out from October 2010 to September 2013 under the aegis of PREMIUM (a Program for Mental Health Interventions for Under-resourced Health systems) in India.<sup>13</sup> The overall aim of the PREMIUM programme is to investigate a systematic, reproducible method for developing psychological treatments that incorporate global evidence, are contextually appropriate and can be delivered by non-specialist health workers. The specific objective of this paper is to describe the application of this systematic approach to the development of a brief psychological treatment for patients with severe depression delivered by lay counsellors in primary healthcare. By lay counsellor, we mean a person who has no professional qualification in mental healthcare although they may have other professional qualifications. Our work focused on developing a psychological treatment for three reasons. First, psychological treatments are comparable in effectiveness with antidepressants, have lower relapse rates and enhance recovery rates in antidepressant non-responders.<sup>14–16</sup> Second, we observed low rates of adherence with antidepressants in our earlier research in India, even with

adherence support measures provided by a case manager.<sup>17</sup> Third, such treatments may be scalable in the context of the increased acceptability of counselling as a healthcare intervention in many countries, including India where this programme is being implemented. We focused on severe depression because evidence-based guidelines developed by the World Health Organization (WHO) and other regulatory bodies recommend structured psychological treatments for severe depression.<sup>7,18</sup>

## Method

The method we adopted arose out of our systematic review of methods used for cultural adaptations of psychological treatments for depression.<sup>19</sup> We also were influenced by the approach of dismantling evidence-based psychological treatments to identify core treatment strategies that could be more easily task-shared with less qualified workers.<sup>20</sup> The treatment development involved three stages (a) identifying potential treatment strategies; (b) developing a theoretical framework for the treatment; and (c) evaluating the acceptability, feasibility and impact of the treatment. The procedures in each stage were implemented as shown in Fig. 1. We present the methods and results of each stage below in order to demonstrate how the psychological treatment evolved through each of these stages of development. The field work was carried out in the states of Maharashtra and Goa, led by the non-governmental organisations Parivartan and Sangath, respectively. All research procedures with participants were approved by the institutional review boards of Sangath, the London School of Hygiene & Tropical Medicine and the Health Ministry Screening Committee of the Indian Council for Medical Research, and written informed consent was obtained from all participants.

### Stage 1: identifying potential treatment strategies

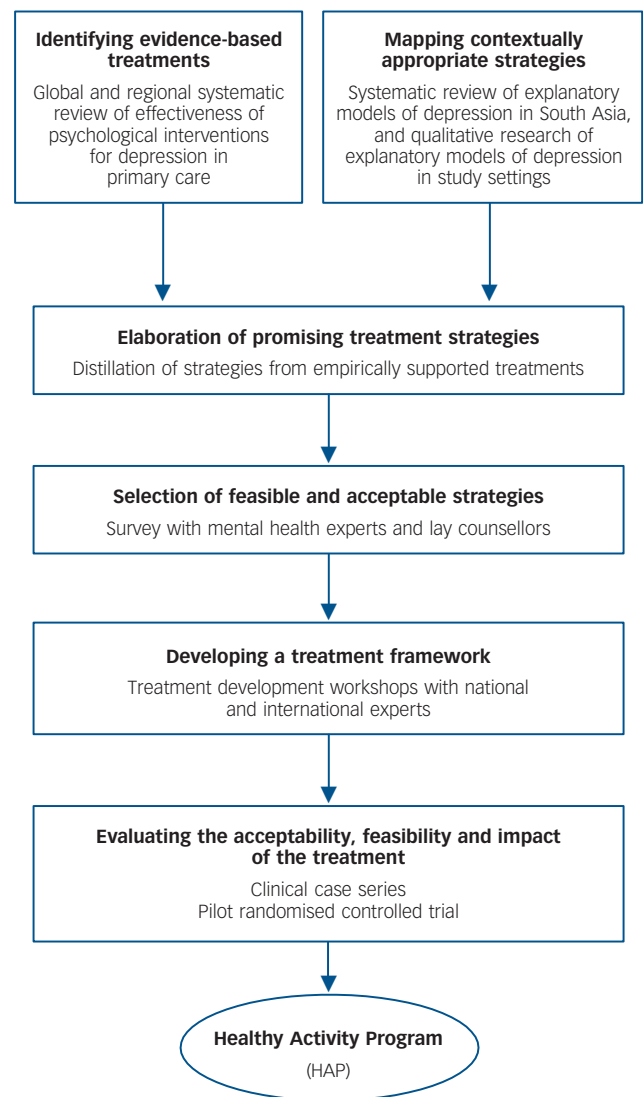
The goal of this stage was to identify promising strategies, drawn from both global and contextual evidence, for inclusion in the treatment. We kept in mind their likely acceptability to patients, effectiveness and ease of delivery by lay counsellors. This stage involved four steps: identification of evidence-based treatments (Step A); understanding the context for patients and families (Step B); distillation of promising treatment strategies from the global and contextual evidence (Step C); and finally selection of feasible and acceptable strategies (Step D).

#### Step A: identification of evidence-based treatments

Our review began with consideration of the WHO Mental Health Gap Action Programme (mhGAP) guidelines for evidence-based interventions for mental disorders in non-specialised healthcare settings.<sup>7</sup> We supplemented these with searches of PubMed and PsycINFO (from 1 January 2009 to 1 January 2011). Concurrently, we carried out systematic reviews of regional (i.e. South Asian) literature on psychological treatments with searches of PubMed Central, IndMed, PsycINFO and PsycEXTRA (from 1 January 1990 to 1 January 2011). We also searched the 'grey' literature through hand searching reference lists of selected papers, contacting key informants and visits to key libraries in the region (search strategies and full list of key informants and libraries can be accessed in online Supplement DS1).

#### Step B: understanding the context for patients and families

In order to define the content and goals of the treatment, we explored the subjective experience of people with depression



**Fig. 1** An overview of the psychological treatment development process.

and their families in the study setting. This involved two methods: first, a systematic review of the literature on explanatory models of depression in South Asia; and second, in-depth interviews with patients with depression and family members. Findings from both methods were collated to address a number of questions: what are the explanatory models of people with depression and their family members; what are common self-help and coping strategies; which psychological and other treatments are sought and provided for depression, and what are the perceptions of their acceptability, feasibility and benefits; what is the acceptability and feasibility of delivery of such treatments by lay counsellors; and what are treatment expectations and desired outcomes? The detailed methods and findings of these studies have been published elsewhere.<sup>21</sup>

#### Step C: identification of treatment strategies from the global and contextual evidence

From the evidence-based treatments identified as described in Step A, we identified specific strategies following a procedure similar to the distillation process<sup>20</sup> whereby interventions are conceptualised not as single units of analysis, but rather as

composites of individual strategies, techniques or components that can be classified. We referred to the psychological treatment manuals and literature<sup>22–26</sup> and consulted the psychological treatment experts in our investigators' group to ensure our list of strategies was accurate and complete. The following example illustrates this approach – the specific strategies identified from CBT were: psychoeducation, problem-solving, cognitive restructuring, activity scheduling and graded-task assignment. To this list of strategies, we added discrete contextually appropriate strategies identified in Step B.

Step D: selection of feasible and acceptable strategies

A consultation exercise was conducted in order to identify which of the strategies in our list would be most feasible for delivery by lay counsellors and acceptable by patients in the Indian context. Two groups of participants were invited: (a) mental health practitioners in India, chosen to represent a range of regions of the country and professional disciplines; and (b) potential lay counsellors, including hospital ward attendants, school counsellors and community multipurpose workers. Each respondent was asked to rate each strategy using a five-point Likert scale on four dimensions, with higher ratings indicating more positive perceptions: feasibility (it is possible for lay counsellors, with appropriate training and supervision, to deliver this strategy); acceptability (the strategy is regarded as suitable in the Indian cultural context and circumstances); effectiveness (the strategy brings about an important and positive change in the disorder); and risk of harm (there is a potential for harm or risk involved in a lay counsellor delivering this strategy). We combined mental health experts' and lay counsellors' ratings to produce an overall mean score for each strategy on the four dimensions.

## Stage 2: developing a treatment framework

The goal of this Stage 2 was to develop a conceptual framework for the treatment that was based on the component strategies identified in the previous stage. This stage involved six treatment development workshops with experienced mental health practitioners to assemble the strategies into a coherent treatment. The stage began with workshops with mental health experts in India (online Supplement DS2). Twenty-nine experts participated; they comprised psychologists ( $n=11$ ), psychiatrists ( $n=13$ ), social workers ( $n=4$ ) and a psychiatric nurse ( $n=1$ ). Ranking, pile sorting and scheduling methods were employed to finalise the list of strategies, to organise them into related groups, and structure them into a coherent treatment for delivery.<sup>27</sup>

## Stage 3: evaluating the acceptability, feasibility and impact of the treatment

The goal of this stage was to evaluate (a) the treatment's acceptability and feasibility in a case series and (b) its impact in a pilot RCT.

Evaluation of the acceptability and feasibility of the treatment

We carried out a case series over 9 months, in which both specialists and lay counsellors delivered the treatment (as described in the manual) to primary health centre attendees. Referrals from general practitioners and psychiatrists, and self-referred clients, were screened for inclusion using the Patient Health Questionnaire-9 (PHQ-9).<sup>28</sup> This questionnaire had previously been validated in the study setting<sup>29</sup> and patients with a score greater than 14, indicating moderately severe to severe

depression, were offered the treatment delivered at weekly/fortnightly intervals. The specialists were four mental health professionals and one experienced therapist (non-specialist counsellor) who had been closely involved in the previous stages of the treatment development process and who were supervised by an international behavioural activation expert (S.D.). Nineteen lay counsellors were recruited from the local community and trained and supervised by the therapists, and were based in 11 primary health centres. Further details of the recruitment, training and competency of the lay counsellors are published elsewhere.<sup>13,30</sup> Data were collected on the clinical process, including the engagement of patients, ease of use of specific strategies and modifications made, the experience of the phasing of the treatments, and other barriers experienced in the delivery of the treatment. There were seven serial focus group discussions with counsellors in four rounds; two each in the first three rounds and one in the fourth round. In each focus group discussion 8–10 counsellors participated. Three rounds of in-depth interviews with four supervisors were conducted (total 12 in-depth interviews/semi-structured interviews). Thirty patients were interviewed, 10 each for the following categories: dropped out, in-treatment and patients who have completed treatment.

**Analysis.** Data collection and analysis progressed iteratively, identifying and interpreting themes, leading to modifications to topic guides according to the emerging analysis. Grounded theory approach was used to analyse data. The guidelines used for the interviews and group discussions provided the *priori* framework for developing the themes and subthemes and data was coded in NVivo 8 qualitative data analysis software (QSR International, www.qsrinternational.com). We tallied simple frequencies for major themes, selected and analysed vivid and compelling examples of narrative extracts, and related these to the research questions.

Evaluating the impact of the HAP

The modified version of HAP was evaluated in a pilot RCT conducted over 5 months in eight primary health centres. Participants were primary health centre attendees recruited between August 2013 and October 2013 who scored over 14 on the PHQ-9 and who met eligibility criteria (aged above 17, resident in Goa and not requiring emergency treatment for any reason). The study was thus designed to include participants from varied social and educational backgrounds who attended primary care. As this was a pilot trial aimed primarily at assessing the acceptability and feasibility of the final treatment and to generate preliminary estimates of impact, no sample size estimations were carried out. Those who consented were randomly allocated in a 1:1 ratio to receive either enhanced usual care (EUC) or EUC plus HAP using a computer-generated allocation sequence, stratified by primary health centre and gender. The EUC consisted of the provision of screening results and mhGAP treatment guidelines to the primary health centre doctor. HAP was delivered by eight counsellors who satisfied competency criteria during assessments using structured role-plays.<sup>30</sup> The primary outcomes were prevalence and severity of depression (based on the PHQ-9 and the Beck Depression Inventory (BDI-II)<sup>31,32</sup> at 2 months post-enrolment; assessments were carried out by evaluators masked to group assignment. In addition, we assessed a range of process indicators (for example, number and duration of sessions required to deliver HAP). Intention-to-treat analyses adjusted for baseline PHQ-9 and that also accounted for clustering at the level of the primary health centre were carried out using Stata 11.

## Results

### Stage 1: potential treatment strategies identified

The global literature review undertaken in Step A to identify evidence-based treatments identified 33 papers (15 systematic reviews and 18 randomised control trials (RCTs)) and the regional review identified 23 papers (7 RCTs, 10 other study designs, 4 narrative reviews and 2 manuals/guidelines). The reference lists for the selected papers are provided in online Supplement DS3. The treatments identified through these two reviews were rated on two dimensions (i.e. the strength of the evidence of effectiveness and the generalisability of this evidence to the local context and feasibility of delivery by lay counsellors). Based on this approach, we selected the following treatments for further consideration: cognitive-behavioural therapy (CBT); interpersonal psychotherapy; problem-solving therapy; psycho-education; behavioural activation; physical exercise; befriending; mindfulness-based cognitive therapy; acceptance commitment therapy, hypnosis, yoga and meditation.

Our findings from Step B, a systematic review of the literature on explanatory models of depression in South Asia and in-depth interviews with patients with depression and family members, were grouped under four broad categories: illness experiences, perceived impact, causal beliefs and self-help strategies. The experience of depression was characterised predominantly by physical aches and pains, stress ('tension'), low mood, and negative and ruminative thoughts. Patients experienced disturbances in interpersonal relationships and occupational functioning, as well as stigma and discrimination. Family difficulties were perceived as the main cause of the problem, followed closely by financial difficulties or multiple social problems. To cope with distress, patients reported engaging in leisure activities and religious and spiritual practices, and seeking support from family and friends.

The final list of 22 treatment strategies we identified (Step C) are shown in Appendix 1. In the final step (Step D) of this stage of the process a total of 58 people, 15 experts and 43 lay counsellors, participated in the consultant exercise to select those strategies that were feasible and acceptable (online Table DS1). After ranking the strategies on the basis of scores and using a *a priori* threshold (strategies with an overall score of 3.5 and above on the five-point Likert scale were retained), 15 of the 22 treatment strategies were taken forward to the next stage (online Table DS2).

### Stage 2: treatment framework formulated

Based on recommendations from the treatment development workshops, modifications were made to the list of 15 strategies notably: religious and spiritual practices were removed as these were considered to involve moral judgement and might induce guilt; support groups were not considered feasible to deliver in primary care settings; and reminiscence was perceived as likely to have limited effectiveness. The final scheduling led to a treatment consisting of four domains of strategies:

- engagement, which comprised psychoeducation, family psychoeducation and treatment planning – the aim of this domain was to educate and engage individuals and family members;
- activation, strategies for the delivery of tasks such as graded-task assignment, activity scheduling and physical exercise;
- need-based strategies, such as addressing interpersonal triggers, problem-solving, relaxation and enlisting social support tailored to the specific needs of individuals, and;

- social integration, as a way to reintegrate individuals into the community.

The international expert group recommended behavioural activation as the theoretical basis for the treatment because it provided the best fit, considering the culture and context in which the treatment was to be delivered and the fact that it captured most of the strategies in the list (Fig. 2). Following this decision, relevant treatment manuals were identified in consultation with the expert group. A content analysis of these manuals was done by assessing adequacy of the description of implementation of selected strategies, suitability for delivery by lay counsellors and the extent of adaptations needed for its use as the primary manual for the emerging treatment (online Supplement DS4). Based on this process, the *Behavioral Activation for Depression: A Clinician's Guide*<sup>33</sup> was recommended.

This recommendation was reviewed in light of the feedback from patients and families in Stage 1 and determined to be an optimal fit for the setting. Specifically, the emphasis of behavioural activation on the importance of context in understanding the development and maintenance of depression was perceived to be responsive to primary patient concerns with family, financial and social problems, as well as stigma and discrimination. Additionally, the emphasis in behavioural activation on using activity and social context to promote recovery was closely aligned with patient reports of using activities and social support as coping strategies.

The *Behavioral Activation for Depression: A Clinician's Guide*<sup>33</sup> manual was then adapted for further use in the following ways: simplification of the language; addition of culturally relevant case vignettes and scripts; and inclusion of other contextually appropriate strategies identified in the previous stage by incorporating procedures from other manuals, notably the one developed for the previous MANAS trial<sup>34</sup> and from the *Engagement Session* manual (A. Zuckoff, personal communication, 2015) and Zuckoff *et al.*,<sup>35</sup> which provides a set of procedures to engage the patient in the treatment. The treatment resulting from this process was named the Healthy Activity Program (HAP).

### Stage 3: the acceptability, feasibility and impact of HAP

Acceptability and feasibility of HAP

Altogether, 271 patients participated in the case series (including 30 treated by the specialists). The modal patient was a middle-aged woman who had low educational attainment and was a home-maker. Nearly half ( $n=133$ , 49%) dropped out, typically after the first session. There was a dose-response reduction in PHQ-9 scores measured in-session with the largest reduction being observed at session 6 (online Table DS3). The qualitative data were triangulated to address three key questions: (a) is HAP perceived to be useful by patients and counsellors, (b) what elements of HAP are perceived to be useful, and (c) what are the challenges faced in delivering HAP?

Briefly, regardless of their treatment status, most of the interviewed patients ( $n=19/30$ ) agreed that they found the treatment to be useful and that the counsellor helped them to address their problems. However, some patients who dropped out ( $n=4/10$ ) admitted that they had not understood what the treatment was about and were nervous about meeting the counsellor when asked to do so for the first time. Most patients who had engaged with the treatment ( $n=16/20$ ) found the following suggestions/advice very beneficial: completing the daily activity chart; spending time with friends and relatives; sharing



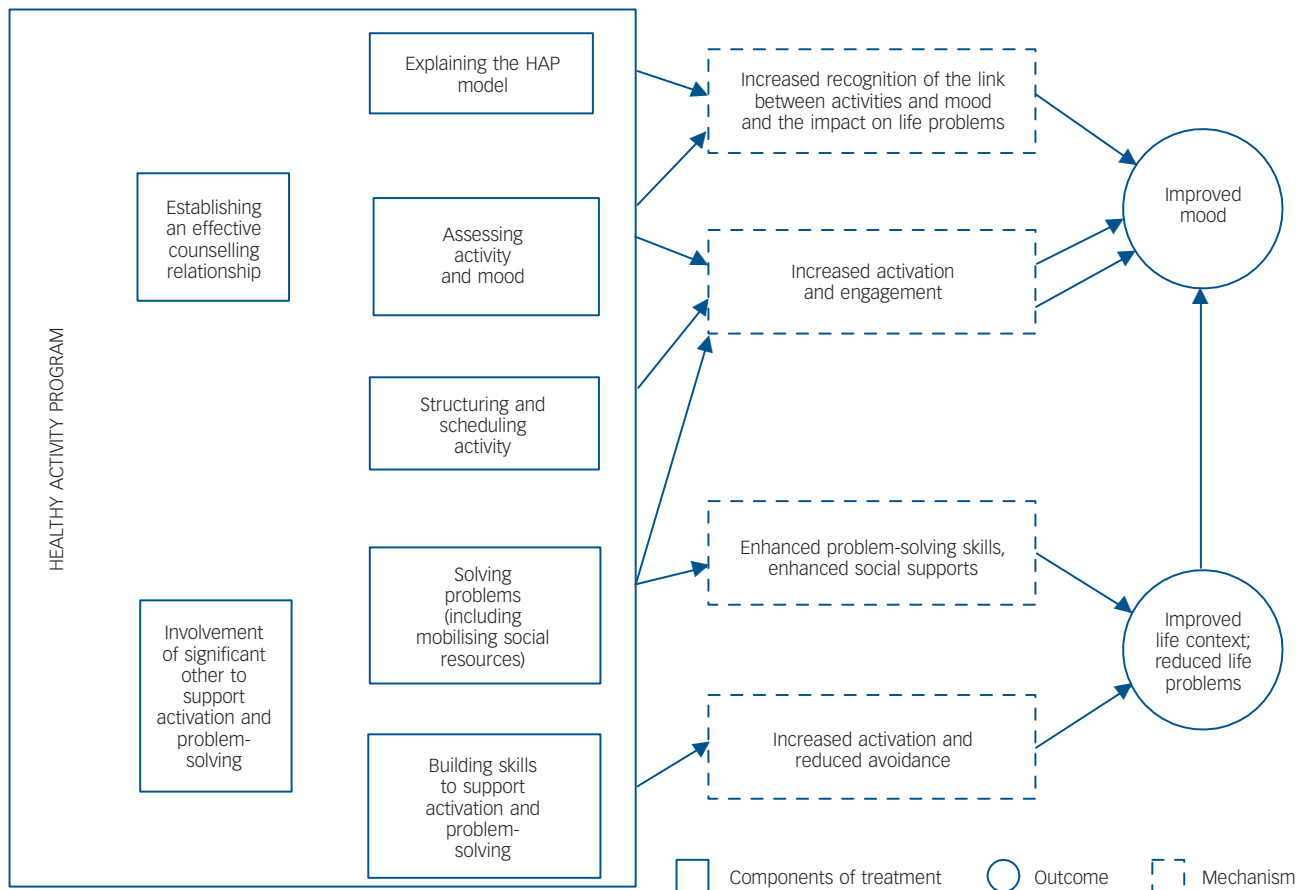


Fig. 2 Modelling of intervention components and pathways to outcomes.

HAP, Healthy Activity Program.

one's thoughts and emotions; and doing things that the patient enjoyed.

Counsellor-related factors were described as promoting treatment engagement ( $n=4$ ), for example the counsellor was of a caring nature and provided continuing support. Patients who had dropped out usually reported doing so because of lack of benefit from the counselling and persistence of their health problems ( $n=7/10$ ). The commonest challenges to successfully completing treatment reported by patients (those who had engaged and those who had dropped out) were practical difficulties such as having to attend to work ( $n=4$ ) or difficulty in travelling to the primary health centre since there was no convenient public transport ( $n=3$ ). Some of the challenges reported by counsellors were difficulty in explaining the nature of treatment as many patients were not aware of the link between the stress in their daily lives and their health complaints; patients' reluctance to wait for the entire duration of the first session since they had not come to the primary health centre prepared for it; patients' failure to do the written homework between sessions; and, difficulty in engaging patients and maintaining session flow over the telephone.

Based on these findings, HAP was iteratively modified to enhance its contextual acceptability and feasibility for delivery by lay counsellors (online Supplement DS5). In particular, practical barriers in accessing primary care facilities led to the decision to choose home-based care as the main format of treatment delivery. Patients' social problems and somatic health concerns were given increased attention. Specifically, a list of

resources and problem-solving strategies were created as scaffolding for the counsellors to utilise with patients. Resource materials for both patients and significant others were provided. Involvement of a significant other in the treatment sessions was encouraged. Use of written homework was replaced by in-session completion of activity monitoring charts. Identification of barriers to uptake of treatment, with discussion of possible solutions, was used in early sessions to enhance engagement. Appropriate language and metaphors were used to describe treatment components, for example using the term 'tension' instead of 'depression'. The quality of the delivery was enhanced by provision of checklists for use by counsellors during sessions. Examples were step-by-step guidelines in dealing with difficult situations (especially high suicide risk) and off-the-shelf solutions derived from experiences in the clinical case series for dealing with social problems. Finally, simplification of therapeutic tools was emphasised, such as doing activity monitoring in blocks of time (morning, afternoon, night) rather than hourly and the use of icons to represent specific activities and emotions for patients with limited literacy to track activities.

#### Impact of the HAP

The modified version of HAP evaluated in the pilot RCT included 62 individuals who agreed to participate from a total of 142 eligible patients (participation rate 43.7%, online Table DS4). Common reasons for refusal to participate were lack of time (60%), need to gain permission from family before consenting

**Table 1** Effect of the psychological treatment on depression outcomes at 2 months among adult primary health centre attendees in Goa, India

Outcome	Enhanced usual care arm (n = 31)	Healthy Activity Program arm (n = 24)	Adjusted risk ratio (95% CI) <sup>a</sup>	Adjusted risk difference or mean difference (95% CI) <sup>a</sup>	P
BDI $\geq 19$ at 2 months, n (%)	19 (61.3)	9 (37.5)	0.55 (0.32 to 0.94)	-28.7 (-50.8 to -6.6)	0.01
BDI score at 2 months, mean (s.d.)	22.8 (13.3)	16.5 (14.4)	-	-6.5 (-14.0 to 0.91)	0.10
Remission (PHQ <5) at 2 months, n (%)	9 (29.0)	11 (45.8)	1.63 (0.91 to 2.99)	20.3 (-3.2 to 43.8)	0.09

BDI, Beck Depression Inventory.  
a. Results are adjusted for baseline Patient Health Questionnaire-9 (PHQ-9) score and primary health centre

(21%), not interested in the treatment (11%) and not residing in the area for the entire duration of the treatment (3%). The sample consisted mainly of middle-aged married women with low education. The outcome assessment was completed by 86% (24/28) and 91% (31/34) of participants in the HAP and EUC arms, respectively. The mean follow-up duration was 8.6 weeks (95% CI 8.2–9.1). There was no significant difference in baseline PHQ-9 score and sociodemographic profile between those who completed outcome evaluation and those who dropped out. Of all patients allocated to the HAP arm who were discharged (planned or unplanned ( $n=19$ ), 6 (33%) dropped out and 12 (67%) completed treatment; one patient was referred elsewhere. The remaining patients were still in treatment at the time of the 2-month follow-up. These process indicators showed improved treatment engagement compared with the earlier case series. Based on an intention-to-treat analysis (Table 1), the prevalence of depression (BDI-II  $\geq 19$  at 2 months) was significantly lower in the HAP than EUC arm (adjusted risk ratio (RR)=0.55, 95% CI 0.32–0.94,  $P=0.01$ ). In the HAP arm as compared with the EUC arm, treatment remission based on the PHQ-9 scores was higher (for PHQ <5 adjusted RR=1.63, 95% CI 0.91–2.99,  $P=0.09$ ) and the severity of depressive symptoms was lower (mean difference on the BDI-II of 6.5,  $P=0.1$ ), although these differences did not reach statistical significance.

## Discussion

### Key findings and interpretation

Our overall aim was to describe a systematic approach to the development of a contextually appropriate, scalable, brief psychological treatment for delivery by lay counsellors, illustrated by its application for the treatment of moderate/severe depression in primary healthcare in India. We identified potential evidence-based treatments from around the world; explored the subjective experiences of patients and their families; identified practical and acceptable delivery strategies in the local context; developed a theoretical framework; and subjected the resulting package to a proof of principle test in a large cohort. The final treatment package then was tested in a pilot RCT.

Our approach demonstrates four key points that may serve to guide future efforts.

First, it is important to take account of local strategies and health beliefs that are relevant to the context of treatments, for example the fact most patients do not regard their symptoms as related to 'mental disorder'. Second, treatment strategies derived from global evidence have cross-cultural applicability, for example behavioural activation emerged as a highly relevant theoretical framework for the treatment. Third, the delivery of treatment must take into account local structural and cultural barriers that might reduce engagement, for example lack of familiarity with 'talking' treatments and both opportunity and direct costs in

accessing such treatments. Fourth, developing an acceptable and feasible psychological treatment depends on following a systematic process that includes reviewing the global and contextual evidence, consulting with patients, families, mental health experts and lay counsellors, and evaluating the intervention in clinical case series and pilot studies.

A recent systematic review of cultural adaptations of psychological treatments for depression revealed that although some followed the steps advocated by the Medical Research Council framework for development of complex interventions,<sup>19,36</sup> most did not report the method of adaptation. The methodology we have described in this paper, which incorporates evidence from treatments from around the world along with contextually appropriate practices and employs techniques such as distillation of strategies, offers a systematic method for the development of psychological treatments for delivery by non-specialist health workers. This approach guides treatment modification in an iterative manner and addresses acceptability and feasibility. In short, the PREMIUM psychological treatment development method addressed two elements simultaneously: (a) simplification so that lay counsellors could deliver it, and (b) cultural adaptation so that it was relevant to the target population, an approach consistent with that followed in another low-resource setting for children.<sup>37</sup>

### The HAP

Although the overarching aim of PREMIUM was to develop new treatments, which were built on global and contextual evidence, we observed that behavioural activation was a good match for our goals, indicating its cross-cultural acceptability and feasibility for delivery by non-specialist health workers. Our final treatment package is a brief structured psychological treatment for moderate/severe depressive symptoms that is delivered by lay counsellors in primary care. Its core strategies are treatment engagement, psychoeducation, behaviour activation, problem-solving, involvement of significant others, activation of social networks, relaxation, and techniques to improve interpersonal communication skills and address rumination.<sup>38</sup> Figure 2 illustrates the various components of HAP and the proposed pathways through which the treatment outcomes are hypothesised to be achieved. A counselling relationship manual also assists lay counsellors to learn and enhance their core counselling skills.<sup>39</sup> HAP is delivered in three phases (Appendix 2), with an optimum of six sessions (up to a maximum of eight), each session lasting 30–40 min, at weekly or fortnightly intervals. The patient's home or the primary health centre are the primary platforms for delivery and engagement of the significant other is encouraged as a means to promote treatment engagement.<sup>39</sup>

A number of challenges remain for the delivery of the treatment; these include: ensuring there are the resources needed for home-based delivery, especially for patients who come from

distant/rural areas; maintaining counsellor competency over the long term; and retaining lay counsellors and preventing burnout. Our systematic approach to the development of psychological treatments needs to be extended to other mental disorders and

replicated in other low-resource settings. The HAP requires further evaluation of its effectiveness and cost-effectiveness (currently in progress)<sup>13</sup> and dissemination through m-health platforms.<sup>40</sup>

## Appendix 1

### Selection of psychological treatment strategies for the Healthy Activity Program (HAP)

Strategy	Effectiveness evidence <sup>a</sup>	Contextual appropriateness <sup>b</sup>	Perceived acceptability, feasibility, effectiveness and safety <sup>c</sup>
<i>Strategies included in HAP</i>			
Supportive counselling	+++	+++	++
Psychoeducation	+++	+++	++
Problem-solving	+++	+++	++
Enlisting social support	+++	+++	++
Relaxation	+++	+++	++
Physical exercise	+++	++	++
Addressing interpersonal triggers	+++	+++	++
Activity scheduling	+++	++	++
Graded task assignment	+++	++	++
Family psychoeducation	+++	+++	++
Treatment planning	+++	+++	++
<i>Strategies not included in HAP</i>			
Value education		++	+
Reminiscence	+++		++
Cognitive restructuring	+++	+++	
Contextual functional analysis	+++	++	++
Focus on past experiences and relationships	+++		+
Radical acceptance	+++	+++	+
Addressing unconscious mechanisms	+++		
Family counselling	+		++
Support groups	+++	+++	++
Religious/spiritual practice		++	++
<p>a. +++, Mental Health Gap Action Programme recommendation or at least one international systematic review or at least one randomised controlled trial (RCT) from South Asia; ++, at least one international RCT; +, any type of evidence from South Asia.</p> <p>b. +++, Evidence of generalisability of international evidence or one RCT from region; ++, evidence from qualitative studies; +, other types of regional evidence.</p> <p>c. ++, Composite score of both mental health professionals and lay counsellor <math>\geq 3.5</math>; +, composite score of both mental health professional or lay counsellor <math>&lt; 3.5</math>.</p>			

## Appendix 2

### The Healthy Activity Program (HAP) phases

Phase	Goals	Description
Early phase (delivered in 1–2 sessions)	Engaging and establishing an effective counselling relationship Helping patients understand HAP Eliciting commitment for counselling	Getting started Understanding the patient's problem using the HAP model and explaining this to the patient Getting commitment to the treatment Involving the significant other Addressing the patients' chief concerns (for example, distressing symptoms or pressing social problems) Addressing barriers to treatment engagement
Middle phase (delivered in 3–5 sessions)	Assessing activation targets and encouraging activation Identifying barriers to activation and learning how to overcome these Helping patients solve (or cope with) life problems	Assessment and activation strategies Problem-solving Other need-based strategies (for example, relaxation, addressing rumination, dealing with interpersonal triggers)
Ending phase (delivered in 1 session)	Reviewing and strengthening gains that the patient has made during treatment in order to prevent relapse.	Summarising key learning from the treatment Preparing for situations in the patient's life that may trigger depression in the future and generating plans to deal with such situations



**Neerja Chowdhary**, MD, Sangath, Goa, India and London School of Hygiene & Tropical Medicine, London, UK; **Arpita Anand**, MSc, MA, Sangath, Goa, India; **Sona Dimidjian**, PhD, University of Boulder, Boulder, Colorado, USA; **Sachin Shinde**, MPA, Sangath, Goa, India; **Benedict Weobong**, PhD, Sangath, Goa, India and London School of Hygiene & Tropical Medicine, London, UK; **Madhumitha Balaji**, MSc, Sangath, Goa, India; **Steve D. Hollon**, PhD, Vanderbilt University, Nashville, Tennessee, USA; **Atif Rahman**, PhD, University of Liverpool, Liverpool, UK; **G. Terence Wilson**, PhD, Rutgers University, New Brunswick, New Jersey, USA; **Helena Verdelli**, PhD, Teachers College, Columbia University, New York, USA; **Ricardo Araya**, PhD, London School of Hygiene & Tropical Medicine, London, UK; **Michael King**, PhD, University College, London, UK; **Mark J. D. Jordans**, PhD, King's College, London, UK; **Christopher Fairburn**, PhD, Oxford University, Oxford, UK; **Betty Kirkwood**, PhD, London School of Hygiene & Tropical Medicine, London, UK; **Vikram Patel**, FMedSci, Sangath, Goa, Centre for Chronic Conditions and Injuries, Public Health Foundation of India, New Delhi, India and London School of Hygiene & Tropical Medicine, London, UK

**Correspondence:** Vikram Patel, Sangath, H No 451 (168), Bhatkar Waddo, Succour, Porvorim, Bardez, Goa 403501, India. Email address: vikram.patel@shtm.ac.uk

First received 14 Jul 2014, final revision 28 Nov 2014, accepted 17 Jan 2015

## Funding

This research has been entirely funded by a Wellcome Trust Senior Research Fellowship to V.P. (Grant no. 091834/Z/10/Z).

## Acknowledgements

We would like to thank the Wellcome Trust for funding this study; and Sangath, Goa and Parivartan, Satara for facilitating the conduct of this study. We are grateful to Helen Weiss for her assistance with the statistical analysis.

## References

- Vos T, Flaxman AD, Naghavi M, Lozano R, Michaud C, Ezzati M, et al. Years lived with disability (YLDs) for 1160 sequelae of 289 diseases and injuries 1990–2010: a systematic analysis for the Global Burden of Disease Study 2010. *Lancet* 2013; **380**: 2163–96.
- Ferrari AJ, Somerville AJ, Baxter AJ, Norman R, Patten SB, Vos T, et al. Global variation in the prevalence and incidence of major depressive disorder: a systematic review of the epidemiological literature. *Psychol Med* 2013; **43**: 471–81.
- Lund C, Breen A, Flisher AJ, Kakuma R, Corrigall J, Joska JA, et al. Poverty and common mental disorders in low and middle income countries: a systematic review. *Soc Sci Med* 2010; **71**: 517–28.
- Surkan JP, Kennedy EC, Hurley MK, Black MM. Maternal depression and early childhood growth in developing countries: systematic review and meta-analysis. *Bull World Health Organ* 2011; **89**: 608–15.
- Prince M, Patel V, Saxena S, Maj M, Maselko J, Phillips MR, et al. No health without mental health. *Lancet* 2007; **370**: 859–77.
- Collins PY, Patel V, Joestl SS, March D, Insel TR, Daar AS, et al. Grand challenges in global mental health. *Nature* 2011; **475**: 27–30.
- World Health Organization. *mhGAP Intervention Guide for Mental, Neurological and Substance Use Disorders in Non-Specialized Health Settings*. Mental Health Gap Action Programme (mhGAP). WHO, 2010.
- Kohn R, Saxena S, Levav I, Saraceno B. The treatment gap in mental health care. *Bull World Health Organ* 2004; **82**: 858–66.
- Wang PS, Aguilar-Gaxiola S, Alonso J, Angermeyer MC, Borges G, Bromet EJ, et al. Use of mental health services for anxiety, mood, and substance disorders in 17 Countries in the WHO World Mental Health Surveys. *Lancet* 2007; **370**: 841–50.
- Patel V, Chowdhary N, Rahman A, Verdelli H. Improving access to psychological treatments: lessons from developing countries. *Behav Res Ther* 2011; **49**: 523–8.
- Patel V, Belkin GS, Chockalingam A, Cooper J, Saxena S, Unützer J, et al. Grand challenges: integrating mental health services into priority health care platforms. *PLoS Med* 2013; **10**: e1001448.
- van Ginneken N, Tharyan P, Lewin S, Rao GN, Meera SM, Pian J, et al. Non-specialist health worker interventions for the care of mental, neurological and substance-abuse disorders in low- and middle-income countries. *Cochrane Database Syst Rev* 2013; **11**: CD009149.
- Patel V, Weobong B, Nadkarni A, Weiss HA, Anand A, Naik S, et al. The effectiveness and cost-effectiveness of lay counsellor-delivered psychological treatments for harmful and dependent drinking and moderate to severe depression in primary care in India: PREMIUM study protocol for randomized controlled trials. *Trials* 2014; **15**: 101.
- Cuijpers P, Sijbrandij M, Koole SL, Andersson G, Beekman AT, Reynolds CF 3rd. The efficacy of psychotherapy and pharmacotherapy in treating depressive and anxiety disorders: a meta-analysis of direct comparisons. *World Psychiatry* 2013; **12**: 137–48.
- Cuijpers P, van Straten A, Andersson G, van Oppen P. Psychotherapy for depression in adults: a meta-analysis of comparative outcome studies. *J Consult Clin Psychol* 2008; **76**: 909–22.
- Wiles N, Thomas L, Abel A, Ridgway N, Turner N, Campbell J, et al. Cognitive behavioural therapy as an adjunct to pharmacotherapy for primary care based patients with treatment resistant depression: results of the CoBaIT randomised controlled trial. *Lancet* 2013; **381**: 375–84.
- Patel V, Weiss H, Chowdhary N, Naik S, Pednekar S, Chatterjee S, et al. Effectiveness of an intervention led by lay health counsellors for depressive and anxiety disorders in primary care in Goa, India (MANAS): a cluster randomised controlled trial. *Lancet* 2010; **376**: 2086–95.
- National Institute of Clinical Excellence. *Depression: Management of Depression in Primary and Secondary Care*. NICE, 2004.
- Chowdhary N, Jotheeswaran AT, Nadkarni A, Hollon SD, King M, Jordans MJ, et al. The methods and outcomes of cultural adaptations of psychological treatments for depressive disorders: a systematic review. *Psychol Med* 2014; **44**: 1131–46.
- Chorpita BF, Daleiden EL, Weisz JR. Identifying and selecting the common elements of evidence based interventions: a distillation and matching model. *Ment Health Serv Res* 2005; **7**: 5–20.
- Aggarwal NKB, Kumar M, Mohanraj S, Rahman R, Verdelli A, Araya H, et al. Using consumer perspectives from systematic reviews and qualitative interviews to inform cultural adaptations of psychological treatments for depression in South Asia. *J Affect Disord* 2014; **163**: 88–101.
- Lambert MJ. *Bergin and Garfield's Handbook of Psychotherapy and Behaviour Change (5th edn)*. Wiley, 2004.
- Barlow DH. *Clinical Handbook of Psychological Disorders (4th edn)*. Guilford Press, 2008.
- Nash RA, Barnier RA. *The Oxford Handbook of Hypnosis. Theory, Research and Practice*. Oxford University Press, 2008.
- Hopko DR, Lejuez CW, Ruggiero KJ, Eifert GH. Contemporary Behavioural activation treatments for depression: procedures, principles, and progress. *Clin Psychol Rev* 2003; **23**: 699–717.
- Walsh R, Shapiro SL. The meeting of meditative disciplines and Western psychology: a mutually enriching dialogue. *Am Psychol* 2006; **61**: 227–39.
- Bernard H. *Research Methods on Anthropology*. Altamira Press 2002.
- Spitzer RL, Kroenke K, Williams JB. Validation and utility of a self-report version of PRIME-MD: the PHQ primary care study. Primary care evaluation of mental disorders. Patient Health Questionnaire. *JAMA* 1999; **282**: 1737–44.
- Patel V, Araya R, Chowdhary N, King M, Kirkwood B, Nayak S, et al. Detecting common mental disorders in primary care in India: a comparison of five screening questionnaires. *Psychol Med* 2008; **38**: 221–8.
- Singla DR, Weobong B, Nadkarni A, Chowdhary N, Shinde S, Anand A, et al. Improving the scalability of psychological treatments in developing countries: a study of peer-led supervision and therapy quality in India. *Behav Res Ther* 2014; **60**: 53–9.
- Beck AT, Steer RA, Brown GK. *Manual for Beck Depression Inventory II (BDI-II)*. Psychology Corporation, 1996.
- Beck AT, Steer RA, Ball R, Ranieri W. Comparison of Beck Depression Inventories -IA and -II in psychiatric outpatients. *J Pers Assess* 1996; **67**: 588–97.
- Martell CR, Dimidjian S, Herman-Dunn R. *Behavioural Activation for Depression: A Clinician's Guide*. The Guilford Press, 2010.
- Chatterjee S, Chowdhary N, Pednekar S, Cohen A, Andrew G, Andrew G, et al. Integrating evidence-based treatments for common mental disorders in routine primary care: feasibility and acceptability of the MANAS intervention in Goa, India. *World Psychiatry* 2008; **7**: 45–53.
- Zuckoff A, Swartz HA, Grote NK. Motivational interviewing as a prelude to psychotherapy for depressed women. In *Motivational Interviewing in the Treatment of Psychological Problems* (2nd edn) (eds H Arkowitz, WR Miller, S Rollnick): 136–69. Guilford Press, 2015.
- Craig P, Dieppe P, Macintyre S, Michie S, Nazareth I, Petticrew M, et al. Developing and evaluating complex interventions: the new Medical Research Council guidance. *BMJ* 2008; **337**: a1655.
- Jordans MJ, Tol WA, Komproe IH. Mental health interventions for children in adversity: pilot-testing a research strategy for treatment selection in low-income settings. *Soc Sci Med* 2011; **73**: 456–66.
- Anand A, Chowdhary N, Dimidjian S, Patel V. *Health Activity Program*. Sangath and London School of Hygiene and Tropical Medicine, 2013 ([http://www.sangath.com/images/manuals/Healthy%20Activity%20Program\\_Manual.pdf](http://www.sangath.com/images/manuals/Healthy%20Activity%20Program_Manual.pdf)).
- Chowdhary N, Dabholkar H, Velleman R, Dimidjian S, Fairburn C, Patel V. *The Premium Counselling Relationship Manual*. Sangath and London School of Hygiene and Tropical Medicine, 2013 ([http://www.sangath.com/images/manuals/Counselling%20Relationship\\_Manual.pdf](http://www.sangath.com/images/manuals/Counselling%20Relationship_Manual.pdf)).
- Fairburn CG, Patel V. The global dissemination of psychological treatments: a road map for research and practice. *Am J Psychiatry* 2014; **171**: 495–8.

Data supplement to Chowdary et al. The Healthy Activity Program lay counsellor delivered treatment for severe depression in India: systematic development and randomised evaluation. Br J Psychiatry doi: 10.1192/bjp.bp.114.161075

**Table DS1**  
**List of participants in the consultation exercise**

	Experts (n=15)	Lay counsellors (n= 43)
Type	Psychiatrists: 10 (66.7%) Clinical Psychologists: 3 (20%) Psychiatric social workers: 2(13.3%)	Health Counsellors: 11 (25.6%) Health Assistants: 4 (9.3%) Hospital Ward attendants: 8 (18.6%) Accredited Social Health Activist (ASHA): 8 (18.6%) Multi-purpose workers: 7 (16.3%) School Counsellors: 5 (11.6%)
Range of Years of Experience		
1-5	1 (6.7%)	28 (65.1%)
6-10	3 (20%)	7 (16.3%)
11-15	2 (13.3%)	2 (4.7%)
16-20	3 (20%)	2 (4.7%)
21-25	3 (20%)	4 (9.3%)
26-30	3 (20%)	0 (0%)
>30	0 (0%)	0 (0%)
Gender		
Females	6 (40%)	33 (76.7%)
Males	9 (60%)	10 (23.3%)
Age Range		
20-29	0 (0.00%)	17 (39.5%)
30-39	5 (33.3%)	15 (34.9%)
40-49	5 (33.3%)	11 (25.6%)
50-59	5 (33.3%)	0 (0%)
Above 60	0 (0%)	0 (0%)

**Table DS2**

**Psychological treatment strategies identified as being acceptable, feasible, effective and with a low risk of harm**

<b>TREATMENT STRATEGY</b>	<b>Mean MH experts score (n=15)</b>	<b>Mean Lay counsellor score (n=43)</b>	<b>Mean MH experts &amp; lay counsellors' score</b>
Physical exercise*	4.27	3.97	4.12
Psychoeducation*	4.09	4.01	4.05
Supportive Counselling*	4.02	3.93	3.97
Graded Task Assignment*	4.00	3.92	3.96
Family Psychoeducation*	4.10	3.78	3.94
Relaxation*	4.09	3.79	3.94
Enlisting social support*	4.05	3.73	3.89
Problem Solving*	3.78	3.70	3.74
Activity scheduling*	3.65	3.76	3.71
Religious and spiritual practices*	3.55	3.78	3.67
Identifying and managing interpersonal triggers*	3.68	3.57	3.62
Family Counselling*	3.57	3.62	3.59
Reminiscence*	3.44	3.71	3.57
Support Groups*	3.56	3.58	3.57
Treatment Planning*	3.30	3.77	3.53
Cognitive Restructuring	3.29	3.61	3.45
Value Education	3.32	3.57	3.44
Radical Acceptance	3.34	3.46	3.40
Mindfulness	3.27	3.46	3.36
Contextual Functional Analysis	3.30	3.35	3.33
Focus on past experiences and relationships	2.99	3.47	3.23
Addressing unconscious mechanisms	2.23	3.58	2.91

\*strategies taken forwards to the next stage

**Table DS3**  
**Relationship between number of sessions and treatment response**

Session number	Treatment response criteria		
	PHQ-9 <10 (% response)	PHQ-9 5/more points decline (% response)	PHQ-9 50% score reduction (% response)
2 (n=93)	39.8	54.8	36.6
3 (n=67)	59.7	77.6	53.7
4 (n=44)	70.4	88.6	63.6
5 (n=34)	67.6	76.5	67.7
6 (n=22)	72.7	81.8	72.2

**Table DS4****Baseline characteristics of trial participants**

<b>Characteristic</b>	<b>EUC</b>	<b>PT</b>
<b>Participants at baseline</b>	34	28
<b>Participants with follow-up data</b>	31 (91%)	24 (86%)
<b>Age</b>		
Mean (SD)	42.8 (13.0)	37.6 (10.2)
<b>Gender</b>		
Female	20 (64.5%)	18 (75.0%)
Male	11 (35.5%)	6 (25.0%)
<b>Marital status</b>		
Married	22 (70.9%)	20 (83.3%)
Widow/ divorced/separated	5 (16.1%)	2 (8.3%)
Single, unmarried	4 (12.9%)	2 (8.3%)
<b>Highest educational level reached</b>		
None	6 (19.3%)	5 (20.8%)
Primary	17 (54.8%)	11 (45.8%)
Secondary or higher	8 (25.8%)	8 (33.3%)
<b>Occupation status</b>		
Unemployed	19 (61.3%)	12 (50.0%)
Manual worker	8 (25.8%)	9 (37.5%)
Professional	3 (9.7%)	2 (8.3%)
No data	1 (3.2%)	1 (4.2%)



## Online Supplement DS1 Details of literature reviews

### (I) Search strategy for global literature review

Since the mhGAP reviews involved an extensive literature search on psychological treatments prior to 2009, we searched electronic databases (PubMed and PsycINFO) from January 1<sup>st</sup> 2009 to January 1<sup>st</sup> 2011. The search terms (in any field) included: Depression OR depressive AND Psycho\* OR therapy OR Counseling OR treatment.

Eligibility criteria:

- Only systematic reviews (SR) and randomized controlled trials (RCTS) were included in this review.
- There was no restriction on language, sample size, type of comparison group or outcome measure.
- Only studies in adults (19 years and above) with DD were included in this review. Patients with common mental disorders, anxiety disorders, adjustment disorders, and comorbid depression and anxiety were included. Patients with comorbid physical illness also could be included. Studies which included patients with other psychiatric conditions as their primary diagnosis were excluded. There was no gender restriction.
- All non pharmacological treatments were included. Studies of computerized/internet based interventions were excluded. Control groups could include any intervention including medication.

The titles of the papers identified through the database search were screened and the abstracts of relevant papers were retrieved. These abstracts were examined for possible inclusion and full texts of selected papers were retrieved. The excluded titles were examined by a second reviewer as a reliability check for the final list of the studies included in review. These full texts were then examined to determine their compliance with eligibility criteria.

### (II) Search strategy for regional literature review

We used several methods to identify literature describing the use of PT in South Asia. We identified published (indexed) literature by searching electronic databases, hand searching reference lists of selected papers and contacting key informants in the region for reference lists of relevant articles. The electronic databases searched were PubMed Central, IndMed (indexing data of articles published in Indian biomedical journals), PsycInfo, PsycExtra from 1/1/1990 to 31/12/2010. Search terms used were:

For PubMed, PsycINFO, PsycExtra:

- Depression OR Depressive OR anxiety

AND

- South Asia OR India OR Pakistan OR Bangladesh OR Sri Lanka OR Bhutan OR Nepal OR Maldives OR Afghanistan

AND

- psycho\* OR therapy OR counselling OR behaviour.

For IndMed:

1. Depression OR Depressive OR anxiety AND
2. Counseling OR psycho\* OR therapy OR behaviour (each separately)
3. Psychotherapy

Search 1: (1) AND (2); Search 2: (3)

Since there is likely to be relevant PT from the region that may not have found its way into the indexed literature, we searched the grey literature. This was obtained from two sources: visits to key local libraries and through key informants (see III and IV below, respectively). The library

searches included hand searching Table of Contents of non indexed journals and, searching library catalogues for books, project reports, manuals and dissertations. Where online catalogues were available, the search terms employed for electronic database searches were used. Key informants (mainly PT experts and mental health professionals) were contacted by email and/or phone to enquire about unpublished work or ongoing research.

Inclusion criteria:

- All literature from South Asia that describes the psychological treatments for DD was included. This includes all types of research studies as well as systematic reviews, RCTS, narrative reviews, case reports and treatment manuals. It was however required that the papers describe or review patient based studies and are not merely authors' opinions.
- Publications in English were included.
- Studies in adults (19 years and above) with DD were included. Patients with common mental disorders, anxiety disorders, adjustment disorders, and comorbid depression and anxiety were included. Patients with comorbid physical illness also could be included. Studies with patients with other psychiatric conditions as their primary diagnosis were excluded. There was no gender restriction.
- All non pharmacological treatments were included. Hence, psychotherapy, counselling, religious treatments, meditation, etc, when used alone or with medications, were included. Studies of only pharmacological preparations whether allopathic or from indigenous systems of medicine were excluded.

The titles of the papers identified through the database search were screened and the abstracts of relevant papers were retrieved. These abstracts were examined for possible inclusion and full texts of selected papers were retrieved. These full texts were then examined to determine their eligibility for inclusion in the review. Authors were contacted by email for full texts that were not available online. A reminder was sent to authors who did not respond to the first request. Additional searching was done by means of hand and archive searches of relevant books, journals and the reference lists of included papers.

(III) List of libraries visited for the regional literature review

Library	Description	Types of Publications
Tata Institute of Social Sciences (TISS), Mumbai	Prime institute in social science research and training	Books, Journal articles Theses
Post Graduate Institute, Chandigarh	Prime Institute of medical training and research	Journals; Indian Psychology Abstracts & Reviews Indian Psychology Reviews
National Institute of Mental Health and Neurosciences (NIMHANS), Bangalore	Apex Institute of training and Research in Psychiatry	Journals Books Theses: 1. PhD Clinical Psychology 2. PhD Psychiatry 3. PhD Social Work 4. M Phil Psychology 5. MSc Nursing
Institute of Human Behavior And Allied Sciences (IHBAS), New Delhi	Leading Institute of mental health training and research	Books Journals Theses
National Medical Library, New Delhi	National medical library and information centre	Books Journals Theses

(IV) List of key informants for the regional literature review

Name	Designation
Mitchell Weiss	Professor and Head, Swiss Tropical and Public Health Institute and University of Basel
Shubhangi Parkar	Professor of Psychiatry, KEM Hospital, Mumbai
K S Jacob	Professor of Psychiatry, Christian Medical College, Vellore
Atif Rahman	Professor of Child Psychiatry, University of Liverpool, UK and Human Development Research Foundation, Pakistan.
Mark Jordans	Clinical Psychologist, Senior Research & Technical Advisor HealthNet TPO
Athula Sumathipala	Consultant Psychiatrist, Institute for Research and Development, Sri Lanka
Mohan Issacs	Former Professor of Psychiatry, NIMHANS, Bangalore
Shiv Gautam	Editor, Indian Psychiatric Society Treatment Guidelines
Lalit Batra	Editor, Indian Psychiatric Society Treatment Guidelines
Kiran Rao	Professor of Clinical Psychology, NIMHANS, Bangalore
Freny Mahindra	Clinical Psychologist, Samaritans, Mumbai

**Online Supplement DS2**  
**List of participants of the treatment development workshops**

<b>Name</b>	<b>Designation and institution</b>
<b>INDIAN EXPERTS</b>	
Padmavati R	Psychiatrist, SCARF, Chennai
Ramesh Kumar	Psychiatrist, SCARF, Chennai
Hema Tharoor	Psychiatrist, SCARF, Chennai
Arivazagan K	Psychologist, SCARF, Chennai
Shanta Kamath	Psychiatrist, SCARF, Chennai
Mangala R	Psychiatrist, SCARF, Chennai
Kotteswara Rao	Psychiatric Social Worker, SCARF, Chennai
Karpagavalli P	Clinical Psychologist, SCARF, Chennai
Suresh Kumar	Psychiatrist, Chennai
Keerthi Prem	Clinical Psychologist, Apollo Multi-Speciality Hospitals LTD, Chennai
Nithya HM	Clinical Psychologist, VHS Medical Centre, Chennai
Sangeetha Madhu	Clinical Psychologist, Chennai Institute of Learning and Development, Chennai
Mohan Raj S	Psychiatrist, Private clinic, Chennai
Jacob KS	Psychiatrist, Christian Medical College, Vellore
K V Kishore	Psychiatrist, NIMHANS, Bangalore
Jagadisha N	Psychiatrist, NIMHANS, Bangalore
C Naveen Kumar	Psychiatrist, NIMHANS, Bangalore
Johnson R	Psychiatrist, St. Johns Medical College, Bangalore
Senthil Reddy	Psychiatrist, NIMHANS, Bangalore
Paulomi Sudhir	Clinical Psychologist, NIMHANS, Bangalore
Vidya Satyanarayan	Clinical Psychologist, St. Johns Medical College, Bangalore
Aarti Taksal	PhD Student in Clinical Psychology, NIMHANS, Bangalore
Priya kaul	Clinical Psychologist, private practice, Bangalore
Rathna Isaac	Clinical Psychologist, private practice, Bangalore
Dharitri Ramprasad	Clinical Psychologist, The Richmond Fellowship Postgraduate College, Bangalore
Prakashi Rajaram	Psychiatric Social Worker, NIMHANS, Bangalore
Janardhana N	Psychiatric Social Worker, NIMHANS, Bangalore
Ranganathan R	Psychiatric Social Worker, NIMHANS, Bangalore
Nagarajaiah D	Psychiatric Nurse, NIMHANS, Bangalore
<b>INTERNATIONAL EXPERTS</b>	
Christopher Fairburn	Psychiatrist, Oxford University, UK
Michael King	Psychiatrist, University College, London, UK
Lena Verdelli	Clinical Psychologist, Teachers College, Columbia University, USA
Ricardo Araya	Psychiatrist, University of Bristol, UK
Atif Rahman	Psychiatrist, University of Liverpool, UK
Mark Jordans	Clinical Psychologist, TPO, Netherlands and LSHTM, UK
Sona Dimidjian	Clinical Psychologist, University of Boulder, Colorado, USA
Steve Hollon	Clinical Psychologist, Vanderbilt University, Tennessee, USA
Terry Wilson	Clinical Psychologist, Rutgers University, USA

SCARF: Schizophrenia Research Foundation; NIMHANS: National Institute of Mental health and Neurosciences; LSHTM: London School of Hygiene and Tropical Medicine

## Online Supplement DS3

### Reference list of papers identified in the global and regional literature reviews

#### I. Global literature

1. Beltman MW, Voshaar RC, Speckens AE. Cognitive-behavioural therapy for depression in people with a somatic disease: meta-analysis of randomised controlled trials. *Br J Psychiatry*. 2010 Jul;197(1):11-9.
2. Cape J, Whittington C, Buszewicz M, Wallace P, Underwood L. Brief psychological therapies for anxiety and depression in primary care: meta-analysis and meta-regression. *BMC Med*. 2010;8:38.
3. Driessen E, Cuijpers P, de Maat SC, Abbass AA, de Jonghe F, Dekker JJ. The efficacy of short-term psychodynamic psychotherapy for depression: a meta-analysis. *Clin Psychol Rev*. Feb;30(1):25-36.
4. McNaughton JL. Brief interventions for depression in primary care: a systematic review. *Can Fam Physician*. 2009 Aug;55(8):789-96.
5. Peng XD, Huang CQ, Chen LJ, Lu ZC. Cognitive behavioural therapy and reminiscence techniques for the treatment of depression in the elderly: a systematic review. *J Int Med Res*. 2009 Jul-Aug;37(4):975-82.
6. Driessen E, Cuijpers P, de Maat SC, Abbass AA, de Jonghe F, Dekker JJ. The efficacy of short-term psychodynamic psychotherapy for depression: a meta-analysis. *Clinical psychology review*. 2010 Feb;30(1):25-36.
7. Bressi C, Porcellana M, Marinaccio PM, Nocito EP, Magri L. Short-term psychodynamic psychotherapy versus treatment as usual for depressive and anxiety disorders: a randomized clinical trial of efficacy. *J Nerv Ment Dis*. 2010 Sep;198(9):647-52.
8. Morrell JC, Pauline S, Warner R, Paley G, Dixon S, Walters SJ, et al. Clinical effectiveness of health visitor training in psychologically informed approaches for depression in postnatal women: pragmatic cluster randomised trial in primary care. *BMJ*. 2009.
9. Mulcahy R, Reay RE, Wilkinson RB, Owen C. A randomised control trial for the effectiveness of group Interpersonal Psychotherapy for postnatal depression. *Arch Womens Ment Health*. 2009 Apr;13(2):125-39.
10. Serfaty MA, Haworth D, Blanchard M, Buszewicz M, Murad S, King M. Clinical effectiveness of individual cognitive behavioral therapy for depressed older people in primary care: a randomized controlled trial. *Arch Gen Psychiatry*. 2009 Dec;66(12):1332-40.
11. Beeber LS, Holditch-Davis D, Perreira K, Schwartz TA, Lewis V, Blanchard H, et al. Short-term in-home intervention reduces depressive symptoms in Early Head Start Latina mothers of infants and toddlers. *Res Nurs Health*. 2010 Feb;33(1):60-76.
12. Grote NK, Swartz HA, Geibel SL, Zuckoff A, Houck PR, Frank E. A randomized controlled trial of culturally relevant, brief interpersonal psychotherapy for perinatal depression. *Psychiatr Serv*. 2009 Mar;60(3):313-21.
13. Arean PA, Raue P, Mackin RS, Kanellopoulos D, McCulloch C, Alexopoulos GS. Problem-solving therapy and supportive therapy in older adults with major depression and executive dysfunction. *Am J Psychiatry*. 2010 Nov;167(11):1391-8.
14. Ell K, Katon W, Xie B, Lee PJ, Kapetanovic S, Guterman J, et al. Collaborative care management of major depression among low-income, predominantly Hispanic subjects with diabetes: a randomized controlled trial. *Diabetes Care*. 2010 Apr;33(4):706-13.
15. Hofmann SG, Sawyer AT, Witt AA, Oh D. The effect of mindfulness-based therapy on anxiety and depression: A meta-analytic review. *J Consult Clin Psychol*. 2010 Apr;78(2):169-83.
16. Mazzucchelli TG, Kane RT, Rees CS. Behavioral activation interventions for well-being: A meta-analysis. *J Posit Psychol*. 2009 Mar;5(2):105-21.
17. Powers MB, Zum Vorde Sive Vording MB, Emmelkamp PM. Acceptance and commitment therapy: a meta-analytic review. *Psychother Psychosom*. 2009;78(2):73-80.
18. Cuijpers P, Munoz RF, Clarke GN, Lewinsohn PM. Psychoeducational treatment and prevention of depression: the "Coping with Depression" course thirty years later. *Clin Psychol Rev*. 2009 Jul;29(5):449-58.
19. Godfrin KA, van Heeringen C. The effects of mindfulness-based cognitive therapy on recurrence of depressive episodes, mental health and quality of life: A randomized controlled study. *Behav Res Ther*. 2010 Aug;48(8):738-46.
20. Hyer L, Yeager CA, Hilton N, Sacks A. Group, individual, and staff therapy: an efficient and effective cognitive behavioral therapy in long-term care. *Am J Alzheimers Dis Other Demen*. 2008 Dec-2009 Jan;23(6):528-39.
21. Kocsis JH, Gelenberg AJ, Rothbaum BO, Klein DN, Trivedi MH, Manber R, et al. Cognitive behavioral analysis system of psychotherapy and brief supportive psychotherapy for augmentation of antidepressant nonresponse in chronic depression: the REVAMP Trial. *Arch Gen Psychiatry*. 2009 Nov;66(11):1178-88.
22. Segal ZV, Bieling P, Young T, MacQueen G, Cooke R, Martin L, et al. Antidepressant monotherapy vs sequential pharmacotherapy and mindfulness-based cognitive therapy, or placebo, for relapse prophylaxis in recurrent depression. *Arch Gen Psychiatry*. 2010 Dec;67(12):1256-64.
23. Donker T, Griffiths KM, Cuijpers P, Christensen H. Psychoeducation for depression, anxiety and psychological distress: a meta-analysis. *BMC Med*. 2009;7:79.
24. Blake H, Mo P, Malik S, Thomas S. How effective are physical activity interventions for alleviating depressive symptoms in older people? A systematic review. *Clin Rehabil*. 2009 Oct;23(10):873-87.
25. Da Costa D, Lowensteyn I, Abrahamowicz M, Ionescu-Ittu R, Dritsa M, Rippen N, et al. A randomized clinical trial of exercise to alleviate postpartum depressed mood. *J Psychosom Obstet Gynaecol*. 2009 Sep;30(3):191-200.



26. Wang C, Bannuru R, Ramel J, Kupelnick B, Scott T, Schmid CH. Tai Chi on psychological well-being: systematic review and meta-analysis. *BMC Complement Altern Med.* 2010;10:23.
27. Hou WH, Chiang PT, Hsu TY, Chiu SY, Yen YC. Treatment effects of massage therapy in depressed people: a meta-analysis. *J Clin Psychiatry.* 2010 Jul;71(7):894-901.
28. Field T, Deeds O, Diego M, Hernandez-Reif M, Gauler A, Sullivan S, et al. Benefits of combining massage therapy with group interpersonal psychotherapy in prenatally depressed women. *J Bodyw Mov Ther.* 2009 Oct;13(4):297-303.
29. Shih M, Yang Y-H, Koo M. A Meta- Analysis of Hypnosis in the Treatment of Depressive Symptoms: A Brief Communication. *Clinical and Experimental HYPNOSIS.* 4 ed: Routledge; 2009. p. 431 - 42.
30. Boelens PA, Reeves RR, Replogle WH, Koenig HG. A randomized trial of the effect of prayer on depression and anxiety. *Int J Psychiatry Med.* 2009;39(4):377-92.
31. Mead N, Lester H, Chew-Graham C, Gask L, Bower P. Effects of befriending on depressive symptoms and distress: systematic review and meta-analysis. *Br J Psychiatry.* 2010 Feb;196(2):96-101.
32. Cohen S, O'Leary KD, Foran H. A randomized clinical trial of a brief, problem-focused couple therapy for depression. *Behav Ther.* 2010 Dec;41(4):433-46.
33. Chan AS, Sze SL, Cheung MC, Lam JM, Shi D. Dejian mind-body intervention improves the functioning of a patient with chronic epilepsy: a case report. *Cases J.* 2009;2:9080.

## II. Regional Literature

1. Ali BS, Rahbar MH, Naeem S, Gul A, Mubeen S, Iqbal A. The effectiveness of counseling on anxiety and depression by minimally trained counselors: a randomized controlled trial. *Am J Psychother.* 2003;57(3):324-36.
2. Janakiramaiah N, Gangadhar BN, Naga Venkatesha Murthy PJ, Harish MG, Subbakrishna DK, Vedamurthachar A. Antidepressant efficacy of Sudarshan Kriya Yoga (SKY) in melancholia: a randomized comparison with electroconvulsive therapy (ECT) and imipramine. *J Affect Disord.* 2000 Jan-Mar;57(1-3):255-9.
3. Patel V, Chisholm D, Rabe-Hesketh S, Dias-Saxena F, Andrew G, Mann A. Efficacy and cost-effectiveness of drug and psychological treatments for common mental disorders in general health care in Goa, India: a randomised, controlled trial. *Lancet.* 2003 Jan 4;361(9351):33-9.
4. Patel V, Weiss HA, Chowdhary N, Naik S, Pednekar S, Chatterjee S, et al. Effectiveness of an intervention led by lay health counsellors for depressive and anxiety disorders in primary care in Goa, India (MANAS): a cluster randomised controlled trial. *Lancet.* 2010 Dec 18;376(9758):2086-95.
5. Rahman A, Malik A, Sikander S, Roberts C, Creed F. Cognitive behaviour therapy-based intervention by community health workers for mothers with depression and their infants in rural Pakistan: a cluster-randomised controlled trial. *Lancet.* 2008 Sep 13;372(9642):902-9.
6. Tripathy P, Nair N, Barnett S, Mahapatra R, Borghi J, Rath S, et al. Effect of a participatory intervention with women's groups on birth outcomes and maternal depression in Jharkhand and Orissa, India: a cluster-randomised controlled trial. *Lancet.* 2010 Apr 3;375(9721):1182-92.
7. Ali NS, Ali BS, Azam IS, Khuwaja AK. Effectiveness of counseling for anxiety and depression in mothers of children ages 0-30 months by community workers in Karachi, Pakistan: a quasi experimental study. *BMC Psychiatry.* 2010;10:57.
8. Andrew G, Dias-Saxena F, Patel V. The Development of a Counselling Treatment for Common Mental Disorders in General Health Care Settings. *Indian Journal of Clinical Psychology.* 2000;27(1):72-9.
9. Dubey SN. Effectiveness of Cognitive Behaviour Therapy for the Treatment of Depression :A Case Report. *Indian Journal of Clinical Psychology.* 1999;26(2):188-91.
10. Kannappan R. Cognitive behaviour therapy as an adjunct to drug therapy in the treatment of dysthymic disorder. *Journal of the Indian Academy of Applied Psychology.* 2007;33(2):195-200.
11. Mao A. Mindfulness based CBT in anxiety disorders. Bangalore: NIMHANS; 2003.
12. Nalini. NR, Kumaraiah V, Subakrishna. DK. Cognitive Behaviour Therapy in the Treatment of Neurotic Depression. *NIMHANS Journal.* 1996;14(1):31-5.
13. Rahul AG, Joseph MI. Influence of Meditation on Anxiety. *Indian Journal of Community Psychology.* 2009;5(2):228-34.
14. Sinha M, Sudhir PM, Kumaraiah V. Effects of Cognitive Behavioral Intervention on Anxiety, Depression and Subjective Well Being of Women with Infertility. *Indian Journal of Clinical Psychology.* 2008;35(1):60-6.
15. Somasundaram D. Using traditional relaxation techniques in healthcare. *Int Med J.* 2002;9(3):191-8.
16. Vidya R. Cognitive Behavioural Intervention in Somatisation. Bangalore: NIMHANS; 2001.
17. Grover P, Varma VK, Pershad D, Verma SK. Role of yoga in the treatment of neurotic disorders: current status and future directions. *Indian J Psychiatry.* 1994 Oct;36(4):153-62.
18. Jena SPK. Cognitive Behaviour Therapy. New Delhi: Sage Publications 2008.
19. Naveen GH, Varambally S, Thirthalli J. Yoga For Depression. Bangalore: Advanced Centre for Yoga; 2010.

20. Prameela V, Veena AS, Rao K, Premchander S. Counselling Intervention for Rural Women with Psychological Distress. In: Rao k, editor. Mindscapes Global Perspective on Psychology In Mental Health. Bangalore: NIMHANS; 2007.
21. Khandelwal S. Conquering Depression: You can get out of the blues. New Delhi: World Health Organisation, Regional Office for South-East Asia; 2001.
22. India TFoCPGfPi. Clinical Practice Guidelines for Psychiatrists in India: Indian Psychiatric Society; 2004.
23. Dubey SN, Pradhan M. Effectiveness of Cognitive Behaviour Therapy for the treatment of Major Depression. Indian Journal of Community Psychology. 2004;1(1):70-6.

## Online Supplement DS4

### Criteria used for content analysis of psychological treatment manuals

Criteria	Very Low (1)	Low (2)	Avg. (3)	High (4)	Very high (5)
1. Suitability: To what extent is the manual directed for/suitable for use by a lay/community health worker?					
2. Engagement factors: To what extent does the manual address issues related to engagement?					
3. Structure of sessions: To what extent does the manual provide a clear sessional outline?					
4. Description of techniques: To what extent does the manual provide detailed description of PT techniques?					
5. Language: To what extent is the language used in the manual appropriate for use by non specialists in our cultural context?					
6. Supporting material: To what extent does the manual include supporting material such as patient information materials, check-lists etc?					
7. Flexibility: To what extent does the manual provide options in treatment delivery methods thus allowing the counsellor to be flexible in delivering the PT (for example, for less literate patients or on the telephone)					
8. Addressing challenges: To what extent does the manual address problems that may arise during treatment with solutions for these?					

## Online Supplement DS5 Log of changes made to the manual during the various stages of the treatment development process

Domain	Procedure	Rationale
<b>Ensuring use of culturally appropriate language and colloquial expressions</b>	<ul style="list-style-type: none"> <li>• Treatment renamed 'Healthy Activity Program'</li> <li>• Use of terms such as 'stressed' or 'tension' where necessary and avoidance of psychiatric labels such as 'depression' or 'mental illness'</li> <li>• 'Counsellor' used instead of 'therapist'</li> <li>• 'Patient' instead of 'client'</li> <li>• Terms to describe various components of the intervention simplified. For example, 'Learning together' instead of 'assessment, "Breaking down" and "timing" activities instead of "structuring" and "scheduling", addressing 'Thinking too much' instead of rumination'</li> </ul>	<ul style="list-style-type: none"> <li>• Promoting rewarding and pleasurable activities is the therapeutic goal, and the focusing on these behaviours is culturally valued.</li> <li>• Depression not well understood as a term. Stressed or burden more understandable in the local context. To minimise stigma.</li> <li>• Counsellor is a widely understood term of a health professional who provides advice/talking interventions, for e.g. HIV/AIDS and breast feeding counsellors, and is now part of the language of national health programs</li> <li>• Since the intervention is based in the PHC, the medical model of a 'patient' seeking care for a health problem is more acceptable</li> <li>• Using literal translations or translations which are not culturally acceptable is one of the major barriers in therapy and more difficult for counsellors as well as patients to relate to.</li> </ul>
<b>Enhancing the therapeutic alliance</b>	<ul style="list-style-type: none"> <li>• An accompanying 'Counselling Relationship' manual developed in addition to the HAP manual</li> <li>• Emphasis on provision of hope and reassurance</li> </ul>	<ul style="list-style-type: none"> <li>• To emphasise the importance of this element of treatment and provide additional guidelines for lay counsellors to develop an effective and collaborative therapeutic relationship</li> <li>• Enhance patient engagement and strengthen the therapeutic relationship in the context of low exposure to the concept of 'talking treatments'</li> </ul>
<b>Addressing culturally relevant distress experiences</b>	<ul style="list-style-type: none"> <li>• Emphasis on addressing economic and social problems faced by patients early in the course of the treatment by increased emphasis on involving significant other, mobilising social resources, and problem solving</li> <li>• List of common problems and possible solutions listed in the manual to aid counsellors</li> <li>• Detailed listing of social welfare agencies provided to facilitate referrals when needed</li> <li>• Emphasis in addressing the mind body link and physical health concerns in the early phase</li> <li>• Skill building techniques (e.g. <i>communication skills</i>) added</li> <li>• Advice regarding dealing with sleep difficulties and tobacco use added</li> </ul>	<ul style="list-style-type: none"> <li>• Social problems trigger depression and interfere with patient engagement and recovery if left unaddressed</li> <li>• Many patients presenting with multiple/severe social problems that the counsellor found difficult to address, e.g.: financial difficulties; unemployment, etc</li> <li>• To address the distress caused by physical symptoms and health concerns that are an integral part of the depressive experience</li> <li>• Lack of skills in the patient can be a barrier in effective activation</li> <li>• Tailored advice for presenting symptoms addresses personal concerns and enhances engagement. Tobacco (particularly oral) frequently used and is recognized risk factor for depression</li> </ul>
<b>Enhancing counsellors' ease in delivering the treatment</b>	<ul style="list-style-type: none"> <li>• Section on handling difficult situations that the counsellor may encounter added in the manual. For example, patient not convinced that 'talking treatment' will help, patient focuses only on physical health problems rather than emotional/psychological problems</li> <li>• Emphasis with clear-cut guidelines on how to deal with patients who have high risk of suicide provided to counsellors</li> <li>• Outline of each phase presented in the manual step by step in practical,</li> </ul>	<ul style="list-style-type: none"> <li>• Enhance skills of counsellors to manage common challenging real life clinical situations</li> <li>• Enhance the confidence of counsellors in dealing with patients with high suicide risk and to enhance the safety of the program in the context of lay counsellors</li> <li>• To assist counsellors in delivering the intervention in a structured manner</li> </ul>

Domain	Procedure	Rationale
	user-friendly manner <ul style="list-style-type: none"> <li>Use of a phase specific session checklist for counsellors to complete at the end of session</li> </ul>	<ul style="list-style-type: none"> <li>To provide counsellors with a guide to use during sessions so as to not miss out any important step.</li> </ul>
<b>Addressing literacy barriers</b>	<ul style="list-style-type: none"> <li>Simplification of therapeutic tools. For example, activity monitoring done in blocks of time (morning, afternoon, night) rather than hourly</li> <li>Use of pictorial tools for patients with limited literacy such as depiction of various activities in the form of pictures that the patient can then easily track</li> <li>Homework charts filled in the session with the counsellor</li> <li>The mood rating done using culturally appropriate metaphors, for example, mood ladder rating mood on a pictorial ladder from 1 to 10; dichotomous rating i.e. good/bad mood used instead of Likert scale; emoticons (smileys) to pictorially depict low/good mood; use a tick mark ( ✓ ) to indicate good mood and a cross ( X ) to indicate a low mood</li> </ul>	<ul style="list-style-type: none"> <li>To overcome limited literacy levels and lack of familiarity with the concept of 'homework'</li> <li>Facilitated work with non-literate patients who found it difficult to quantify their mood on a typical Likert scale. It helped to convert an abstract concept such as mood into a more concrete, easy to understand concept</li> </ul>
<b>Improving patient adherence and treatment completion</b>	<ul style="list-style-type: none"> <li>Length of treatment fixed to maximum of 8 sessions (without booster sessions) delivered at weekly/fortnightly intervals in three phases – early, middle and ending phase</li> <li>Home visits provided as the preferred format of treatment delivery</li> <li>Telephone sessions provided where feasible</li> <li>Provision to deliver an abbreviated first session included</li> <li>Involvement of other PHC staff sought by orientating them to the treatment and seeking their assistance in encouraging patients to see the counsellor</li> <li>Counsellor matched from the same local community and aware of local customs</li> </ul>	<ul style="list-style-type: none"> <li>To streamline the referral process and ensure that patients needing further interventions are referred to a specialist.</li> <li>To increase accessibility and feasibility and enhance treatment adherence by reducing burden on patients and overcome practical barriers to help-seeking</li> <li>To accommodate patients who do not have time for the first session as they primarily came to the PHC to see the doctor and had not factored in the additional time for counselling</li> <li>Facilitate integration with PHC services and enhance treatment adherence</li> <li>Local credibility and acceptability, fluency in local dialect, shared experience in norms and events impacting community</li> </ul>
<b>Attention to specific social context</b>	<ul style="list-style-type: none"> <li>Significant others (for example, spouses, children) encouraged participate in the intervention. Focus on improving relationship and reducing conflict with significant others. Manual specifically includes guidelines to involve the significant other in every phase of the treatment</li> </ul>	<ul style="list-style-type: none"> <li>Acknowledges the central role of the family in the daily lives of patients</li> </ul>
<b>Use of supporting material</b>	<ul style="list-style-type: none"> <li>Booklet containing information about depression, the Healthy Activity Program and treatment worksheets provided</li> <li>Information material for significant other provided</li> </ul>	<ul style="list-style-type: none"> <li>To enhance understanding and engagement with the treatment between sessions</li> <li>To enhance engagement of the significant other who may not attend sessions</li> </ul>



# BJPpsych

The British Journal of Psychiatry

## The Healthy Activity Program lay counsellor delivered treatment for severe depression in India: systematic development and randomised evaluation

Neerja Chowdhary, Arpita Anand, Sona Dimidjian, Sachin Shinde, Benedict Weobong, Madhumitha Balaji, Steven D. Hollon, Atif Rahman, G. Terence Wilson, Helena Verdelli, Ricardo Araya, Michael King, Mark J. D. Jordans, Christopher Fairburn, Betty Kirkwood and Vikram Patel  
*BJP* published online October 22, 2015 Access the most recent version at DOI:  
[10.1192/bjp.bp.114.161075](https://doi.org/10.1192/bjp.bp.114.161075)

---

### Supplementary Material

Supplementary material can be found at:  
<http://bjp.rcpsych.org/content/suppl/2015/10/15/bjp.bp.114.161075.DC1.html>

### References

This article cites 0 articles, 0 of which you can access for free at:  
<http://bjp.rcpsych.org/content/early/2015/10/12/bjp.bp.114.161075#BIBL>

### Reprints/permissions

To obtain reprints or permission to reproduce material from this paper, please write to [permissions@rcpsych.ac.uk](mailto:permissions@rcpsych.ac.uk)

### P<P

Published online 2015-10-22T00:05:24-07:00 in advance of the print journal.

### You can respond to this article at

[/letters/submit/bjprcpsych;bjp.bp.114.161075v1](http://letters/submit/bjprcpsych;bjp.bp.114.161075v1)

### Downloaded from

<http://bjp.rcpsych.org/> on October 30, 2015  
Published by The Royal College of Psychiatrists

---

Advance online articles have been peer reviewed and accepted for publication but have not yet appeared in the paper journal (edited, typeset versions may be posted when available prior to final publication). Advance online articles are citable and establish publication priority; they are indexed by PubMed from initial publication. Citations to Advance online articles must include the digital object identifier (DOIs) and date of initial publication.

---

To subscribe to *The British Journal of Psychiatry* go to:  
<http://bjp.rcpsych.org/site/subscriptions/>

---