

LONDON
SCHOOL of
HYGIENE
& TROPICAL
MEDICINE



Getachew, S; To, S; Trimarsanto, H; Thriemer, K; Clark, TG; Petros, B; Aseffa, A; Price, RN; Auburn, S (2015) Variation in Complexity of Infection and Transmission Stability between Neighbouring Populations of *Plasmodium vivax* in Southern Ethiopia. PLoS One, 10 (10). e0140780. ISSN 1932-6203 DOI: 10.1371/journal.pone.0140780

Downloaded from: <http://researchonline.lshtm.ac.uk/2331682/>

DOI: [10.1371/journal.pone.0140780](https://doi.org/10.1371/journal.pone.0140780)

Usage Guidelines

Please refer to usage guidelines at <http://researchonline.lshtm.ac.uk/policies.html> or alternatively contact researchonline@lshtm.ac.uk.

Available under license: <http://creativecommons.org/licenses/by/2.5/>

RESEARCH ARTICLE

Variation in Complexity of Infection and Transmission Stability between Neighbouring Populations of *Plasmodium vivax* in Southern Ethiopia

Sisay Getachew^{1,2*}, Sheren To³, Hidayat Trimarsanto^{4,5}, Kamala Thriemer³, Taane G. Clark^{6,7}, Beyene Petros¹, Abraham Aseffa², Ric N. Price^{3,8}, Sarah Auburn^{3*}

1 College of Natural Sciences, Addis Ababa University, P.O. Box 52, Addis Ababa, Ethiopia, **2** Armauer Hansen Research Institute, P.O. Box 1005, Jimma Road, Addis Ababa, Ethiopia, **3** Global and Tropical Health Division, Menzies School of Health Research and Charles Darwin University, Darwin, NT 0810, Australia, **4** Eijkman Institute for Molecular Biology, Jl. Diponegoro 69, Jakarta Pusat 10430, Indonesia and The Ministry of Research and Technology (RISTEK), Jakarta, Indonesia, **5** Agency for Assessment and Application of Technology, Jl. MH Thamrin 8, Jakarta 10340, Indonesia, **6** Faculty of Infectious and Tropical Diseases, London School of Hygiene and Tropical Medicine, Keppel Street, London, WC1E 7HT, United Kingdom, **7** Faculty of Epidemiology and Population Health, London School of Hygiene and Tropical Medicine, Keppel Street, London, WC1E 7HT, United Kingdom, **8** Centre for Tropical Medicine and Global Health, Nuffield Department of Clinical Medicine, University of Oxford, Oxford, United Kingdom

* Sarah.Auburn@menzies.edu.au (SA); sisaylm7@gmail.com (SG)



OPEN ACCESS

Citation: Getachew S, To S, Trimarsanto H, Thriemer K, Clark TG, Petros B, et al. (2015) Variation in Complexity of Infection and Transmission Stability between Neighbouring Populations of *Plasmodium vivax* in Southern Ethiopia. PLoS ONE 10(10): e0140780. doi:10.1371/journal.pone.0140780

Editor: Ivo Mueller, Walter & Eliza Hall Institute, AUSTRALIA

Received: July 23, 2015

Accepted: September 30, 2015

Published: October 15, 2015

Copyright: © 2015 Getachew et al. This is an open access article distributed under the terms of the [Creative Commons Attribution License](https://creativecommons.org/licenses/by/4.0/), which permits unrestricted use, distribution, and reproduction in any medium, provided the original author and source are credited.

Data Availability Statement: All relevant data are within the paper and its Supporting Information files.

Funding: The study was funded by a grant from the Menzies School of Health Research (awarded to SA), and by the Wellcome Trust (Senior Fellowship in Clinical Science awarded to RNP 091625). Further funding was provided by SIDA and NORAD core grants to the Armauer Hansen Research Institute and thematic research program of Addis Ababa University.

Abstract

Background

P. vivax is an important public health burden in Ethiopia, accounting for almost half of all malaria cases. Owing to heterogeneous transmission across the country, a stronger evidence base on local transmission dynamics is needed to optimise allocation of resources and improve malaria interventions.

Methodology and Principal Findings

In a pilot evaluation of local level *P. vivax* molecular surveillance in southern Ethiopia, the diversity and population structure of isolates collected between May and November 2013 were investigated. Blood samples were collected from microscopy positive *P. vivax* patients recruited to clinical and cross-sectional surveys from four sites: Arbaminch, Halaba, Badawacho and Hawassa. Parasite genotyping was undertaken at nine tandem repeat markers. Eight loci were successfully genotyped in 197 samples (between 36 and 59 per site). Heterogeneity was observed in parasite diversity and structure amongst the sites. Badawacho displayed evidence of unstable transmission, with clusters of identical clonal infections. Linkage disequilibrium in Badawacho was higher ($I_{AS} = 0.32$, $P = 0.010$) than in the other populations (I_{AS} range = 0.01–0.02) and declined markedly after adjusting for identical infections ($I_{AS} = 0.06$, $P = 0.010$). Other than Badawacho ($H_E = 0.70$), population diversity was equivalently high across the sites ($H_E = 0.83$). Polyclonal infections were more frequent in

Competing Interests: The authors have declared that no competing interests exist.

Hawassa (67%) than the other populations (range: 8–44%). Despite the variable diversity, differentiation between the sites was low (F_{ST} range: 5×10^{-3} –0.03).

Conclusions

Marked variation in parasite population structure likely reflects differing local transmission dynamics. Parasite genotyping in these heterogeneous settings has potential to provide important complementary information with which to optimise malaria control interventions.

Introduction

Once considered a relatively benign infection, *Plasmodium vivax* is now acknowledged to be an important public health threat capable of causing severe and fatal disease [1–3]. Whilst the greatest burden of infection is in South and Southeast Asia, the Horn of Africa harbours a considerable proportion of the global reservoir of infections, and an estimated 10–20% of all *P. vivax* cases [4]. The greatest number of clinical cases is reported from Ethiopia, where malaria continues to be a major cause of morbidity and mortality, accounting for almost 15% of all out-patient visits and 10% of hospital admissions [5]. The high proportion of *P. vivax* infections is a likely reflection of the large number of Duffy positive individuals [6]. Chloroquine has been the first-line treatment of uncomplicated *P. vivax* in Ethiopia for over five decades, however drug resistant parasites are emerging, particularly in the south of the country [7–10]. Containment strategies of *P. vivax* are underway, however, relative to *P. falciparum*, *P. vivax* has proven far harder to control [11, 12]: new approaches are needed to reduce the transmission of this highly adaptive pathogen.

Wide variation in climate, ecology and human settlement patterns across Ethiopia have resulted in extensive heterogeneity in malaria epidemiology. The greatest threat occurs in the 40 million people living between altitudes of 1,500 and 2,500 metres, where unstable transmission coupled with a receptive environment gives rise to sporadic malaria outbreaks [13, 14]. Current epidemiological surveillance strategies aim to identify populations at greatest risk to prioritise malaria control activities. New molecular approaches are being increasingly used to further characterise parasite populations, quantifying parasite diversity and population structure; these data can provide important insights relevant to the national malaria control program [15–38]. A previous study examined the genetic diversity of *P. vivax* isolates collected between 2006 and 2008 in Assendabo, Ethiopia, providing broad insights into the population structure and diversity of African versus Asian isolates [20]. However, as the isolates were collected from a single site, investigation of the local variation in parasite diversity and underlying transmission dynamics was not possible.

In an evaluation of the scope of molecular surveillance of *P. vivax* transmission dynamics in Ethiopia, genotyping methods were used to characterize the local genetic diversity and structure of isolates collected during the main transmission season in 2013 at four sites in neighbouring zones in the South Nations Nationalities and Peoples' Region (SNNPR).

Materials and Methods

Study Sites and Sample Collection

The study was conducted in four sites in the SNNPR; Arba Minch (town) and Zuria in Gamo Gofa Zone (Arbaminch), Misrak Badawacho in Hadiya Zone (Badawacho), Halaba Special

Woreda (Halaba) and Hawasa town in Sidama Zone (Hawassa) (Fig 1). Details on the local population and malaria epidemiology in each of the districts are provided in the Supplementary Material (S1 Table). Patients were enrolled to the study during the peak malaria transmission season between May and November 2013. In Arbaminch, the majority of patients were enrolled within the framework of a *P. vivax* chloroquine sensitivity survey conducted at Shele Health Center. Additional patients were recruited by cross-sectional sampling from Arbaminch Hospital. In Badawacho and Halaba, patients were recruited in the framework of a *P. vivax* chloroquine survey conducted at Shone Health Center and Guba Health Center, respectively. In Hawassa, all patients were recruited by cross-sectional sampling at Adare Hospital and Millenium Health Center. Enrolment criteria were uncomplicated *P. vivax* mono-infection with microscopy-determined parasite density above $250 \mu\text{l}^{-1}$, an axillary temperature of $\geq 37.5^\circ\text{C}$ or history of fever within 48 hours of presentation, and residence in close proximity to the health center (i.e. within 10 km radius). Patients were asked to donate a capillary (50–150 μl) blood sample spotted onto filter paper (Whatman[®] 3MM filter paper, Cat No.3030917) in addition to a blood sample for routine microscopic examination. Thick and thin blood films were read by two to three independent laboratory technicians from the health center. The number of asexual parasites was counted per 200 white blood cells (WBC) and parasitaemia estimated assuming a WBC count of $8000 \mu\text{l}^{-1}$.

Molecular Processing

DNA extraction was undertaken using the QIAamp blood mini kit (Qiagen) according to the manufacturer's protocol for dried blood spots. Genotyping was undertaken at nine previously described STR markers: *Pv3.27*, *msp1F3*, *MS1*, *MS5*, *MS8*, *MS10*, *MS12*, *MS16* and *MS20* [40, 41]. These markers are included in a consensus panel selected by partners within the Vivax Working Group of the Asia Pacific Malaria Elimination Network [42]. The *Pv3.27*, *MS16* and *msp1F3* loci were amplified using methods described elsewhere [15]. The protocol for the remaining loci and the details of the primer sequences and chromosomal locations for each marker have been provided previously [15, 20]. The labelled PCR products were sized by denaturing capillary electrophoresis on an ABI 3100 Genetic Analyzer with GeneScan LIZ-600 (Applied Biosystems) internal size standards. Genotype calling was undertaken using GeneMapper Version 4.0. To reduce potential artefacts, an arbitrary fluorescent intensity threshold of 500 rfu was applied for peak detection. All electropherogram traces were additionally inspected manually. For each isolate, at each locus, the predominant allele and any additional alleles with minimum 33% height of the predominant allele were scored [43].

Population Genetic Analysis

An infection was defined as polyclonal if more than one allele was observed at one or more loci. The multiplicity of infection (MOI) for a given sample was defined as the maximum number of alleles observed at any of the loci investigated. With the exception of measures of polyclonality and MOI, only the predominant allele at each locus in each isolate was used for analysis [43]. The expected heterozygosity (H_E) was measured as an index of population diversity using the formula $H_E = [n / (n-1)] [1 - \sum p_i^2]$, where n is the number of isolates analyzed and p_i is the frequency of the i th allele in the population. The pairwise F_{ST} metric was used to gauge the genetic distance between populations. Calculations were undertaken using Arlequin software (version 3.5) [44]. Standardized measures (F'_{ST}) were additionally calculated to adjust for high marker diversity [45]. Population structure was further assessed using STRUCTURE software version 2.3.3 [46]. Twenty replicates, with 100,000 burn-in and 100,000 post burn-in iterations were run for each of K (populations) from 1–10 using the model parameters of admixture with correlated

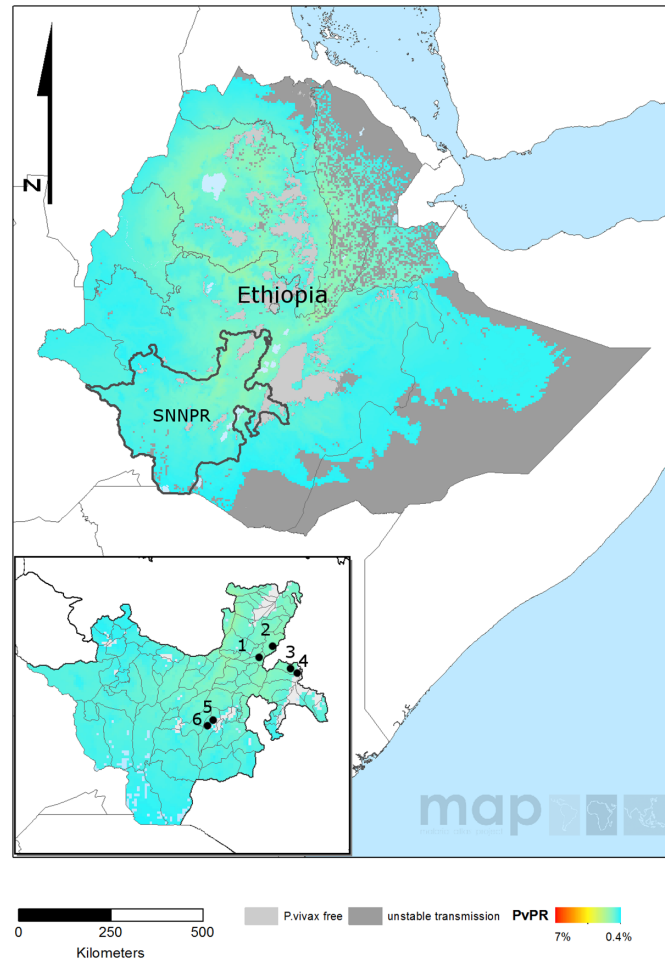


Fig 1. *P. vivax* prevalence map for Ethiopia illustrating the location of the study sites. This map was generated by the Malaria Atlas Project, University of Oxford. The colour scale reflects the model-based geostatistical point estimates of the annual mean *P. vivax* parasite rate in the 1–99 year age range (PvPR) within the stable spatial limits of *P. vivax* transmission in 2010 [39]. The approximate locations of the study sites are indicated with numbered black dots: Shone Health Center, Badawacho (1), Guba Health Center, Halaba (2), Adare Hospital, Hawassa (3), Millenium Health Center, Hawassa (4), Arbaminch Hospital, Arbaminch (5), and Shele Health Center, Arbaminch (6). All MAP maps are available to users under the CCAL 3.0. <http://www.map.ox.ac.uk/about-map/open-access/>.

doi:10.1371/journal.pone.0140780.g001

allele frequencies. The most probable K was derived by applying the delta K method [47], and bar plots were prepared with *distruct* software version 1.1 [48]. Multi-locus genotypes (MLGs) were reconstructed from the predominant allele at each locus in isolates with no missing data. Multi-locus linkage disequilibrium (LD) was measured by the standardised index of association (I_A^S) using the web-based LIAN 3.5 software [49]. The significance of the I_A^S estimates was assessed using 10,000 random permutations of the data. For each population, LD was assessed in 1) all samples, 2) samples with a maximum of one multi-allelic locus, and 3) with repeated MLGs represented once. The genetic relatedness between sample pairs was assessed by measuring the proportion of alleles shared between MLG pairs (ps). Using $(1-ps)$ as a measure of genetic distance [50], an unrooted neighbour-joining tree [51] was generated with the *ape* package using R software [52]. The correlation between genetic and temporal distance was assessed using Mantel's r -test with 10,000 permutations using the *ade4* package in R [53].

Statistical Analysis

Statistical comparisons of patient gender and infection polyclonality between sites were undertaken using Pearson's Chi-square test. The significance of difference between sites with regard to patient age, parasite density, MOI and expected heterozygosity were assessed using the Mann-Whitney U test. Assessment of the correlation between MOI with patient age and parasite density was undertaken using Spearman's rank correlation coefficient. All tests were performed using R software, with a significance threshold of 0.05.

Ethical Approval

Ethical approval for the study was granted by the respective Ethical Boards of the Addis Ababa University College of Natural Sciences, Ethiopia (RERC/002/05/2013), the Armauer Hansen Research Institute, Addis Ababa, Ethiopia (AHRI-ALERT P011/10), the National Research Ethics Review Committee of Ethiopia (Ref.no. 3.10/580/06) and the Human Research Ethics Committee of the Northern Territory Department of Health and Menzies School of Health Research, Australia (HREC-13-1942). Written informed consent was obtained from all study participants or a parent or guardian where participants were 18 years of age or younger.

Results

Patient Sampling

Between May and November 2013, a total of 353 participants with microscopy-positive *P. vivax* infection were enrolled in cross-sectional and clinical surveys at multiple health centres and hospitals across the four sites investigated (Table 1). In Arbaminch and Hawassa sites, participants were recruited from two health care facilities in each district; isolates were pooled according to district for analysis. Comparison between Arbaminch Hospital and Shele Health Center did not reveal any significant differences in sample diversity (S2 Table). Owing to the small number of samples from Adare Hospital that were included in the analysis ($n = 5$), comparisons with Millenium Hospital were not undertaken.

The median age of participants was lowest in Badawacho (5.8 years), followed by Halaba (12 years), Arbaminch (13.5 years) and Hawassa (20 years); Table 1. With the exception of Arbaminch versus Halaba ($P = 0.887$), all pairwise comparisons of age were significant ($P < 0.05$). Within both the Arbaminch and Hawassa sites, participants were significantly older at the Hospitals compared to the outpatient clinics ($P = 3.3 \times 10^{-4}$ and $P = 0.003$ respectively; Table 1). Significant differences were also observed in peripheral parasitaemia, with the lowest median density observed in Badawacho ($1,172 \text{ ul}^{-1}$), followed by Hawassa ($2,300 \text{ ul}^{-1}$), Arbaminch ($3,247 \text{ ul}^{-1}$) and Halaba ($7,698 \text{ ul}^{-1}$); $P < 0.05$ in all pairwise comparisons. No significant differences were observed in the proportion of male participants, which ranged from 55–66% across the sites.

Filter spot blood samples were available from 61.5% (217) of the 353 *P. vivax* microscopy-positive participants, on which parasite genotyping could be attempted. Owing to artefact peaks that were difficult to distinguish from authentic allele peaks, the MS8 locus was excluded from analysis. The remaining 8 loci performed well with 0 (0%) to 10 (5%) genotyping failures across the 217 samples. All 8 markers exhibited moderate to high diversity in each of the four sites (see Supplementary Material; S3 Table). Although MS16 has exhibited apparent excess diversity in other sites [54], we did not observe evidence of excess diversity at this marker in southern Ethiopia, where it fell fifth in order of highest to lowest diversity amongst the 8 loci assessed (S3 Table). Indeed, whilst the diversity at MS16 was moderately high in our study sites ($H_E = 0.85$), a previous study in Assendabo, southern Ethiopia, observed markedly lower

Table 1. Details of parasite sampling.

Site	Health Facility	Sampling framework	Collection period	No. participants ¹	Median age of participants (IQR), years	No. male participants	Median parasite density (IQR), μl^{-1}	No. samples analyzed ²
Arbaminch	Arbaminch Hospital	Cross-sectional	Jun-Aug 2013	19	20 (14.5–22.5)	12 (63.2%)	3,213 (2,476–3,420)	15
	Shele Health Center	Clinical survey	May-Nov 2013	89	10 (4–18)	58 (65.2%)	3,520 (1,520–7,200)	21
	Both sites	Cross-sectional and clinical	May-Nov 2013	108	13.5 (5–19.3)	70 (64.8%)	3,247 (1,660–6,705)	36
Halaba	Guba Health Center	Clinical survey	Jun-Nov 2013	52	12 (4.8–21.3)	30 (57.7%)	7,698 (2,774–14,450)	47
Badawacho	Shone Health Center	Clinical survey	May-Aug 2013	90	5.8 (4–8)	51 (56.7%)	1,172 (800–3,342)	59
Hawassa	Adare Hospital	Cross-sectional	Sep 2013	19	25 (21–30)	11 (57.9%)	1,890 (1,236–2,679)	5
	Millenium Health Center	Cross-sectional	Aug-Nov 2013	84	18 (11.8–24.3)	46 (54.8%)	2,312 (1,219–4,544)	50
	Both sites	Cross-sectional	Aug-Nov 2013	103	20 (13–26)	57 (55.3%)	2,300 (1,222–3,780)	55
All sites	All sites	Cross-sectional and clinical	May-Nov 2013	353	13 (5–20)	207 (58.6%)	2,408 (1,200–6,020)	197

¹ Number of microscopy-determined *P. vivax* positive patients enrolled in the study.

² Number of samples included in the final data set.

doi:10.1371/journal.pone.0140780.t001

diversity ($H_E = 0.20$) [20]. Another marker that we considered as a potential confounder of population diversity and/or structure is the *msp1f3* locus. The product of the *msp1f3* locus is expressed on the merozoite surface and patterns of diversity at this locus may therefore be affected by balancing selection. However, a previous study conducted on *P. vivax* isolates from Papua New Guinea and the Solomon Islands demonstrated that there was no evidence of balancing selection at the *msp1f3* locus [24]. We therefore retained MS16 and *msp1f3* in our analyses but conducted additional analyses on a reduced data set without these two markers in consideration of the potential impacts of excess diversity and/or selective pressures.

A total of 197 isolates could be included in the population genetic analysis, comprising 181 (92%) isolates with complete genotype data across all 8 loci, 13 (7%) with successful calls at 7 of these loci, 2 (1%) with successful calls at 6 loci, and a single sample with successful calls at 5/8 loci. Genotyping data for the individual isolates is presented in the Supplementary Material (S4 Table). Selection bias was assessed between all enrolled participants ($n = 353$) and participants whose samples were included in the population genetic analysis ($n = 197$); no significant differences were observed in patient age, gender or peripheral parasitaemia at any of the districts (all $P > 0.05$).

Infection Complexity and Population Diversity

A summary of polyclonality, MOI and population diversity is presented in Table 2. Moderate variation was observed in the proportion of polyclonal infections, ranging from 8% in Badawacho to 67% in Hawassa. In accordance with the polyclonality rates, the mean MOI was lowest in Badawacho (1.09) and highest in Hawassa (1.80). With the exception of Badawacho versus

Table 2. Complexity of infection and population diversity.

Site	% polyclonal infections (no. polyclonal/ total no.)	Mean MOI, median (range)	Mean $H_E \pm SE$ (range)	No. of unique MLGs
Arbaminch	44% (16/36)	1.53, 1 (1–4)	0.83 \pm 0.01 (0.69–0.94)	35
Halaba	21% (10/47)	1.21, 1 (1–2)	0.83 \pm 0.01 (0.75–0.92)	43
Badawacho	8% (5/59)	1.09, 1 (1–2)	0.70 \pm 0.01 (0.60–0.79)	25
Hawassa	67% (37/55)	1.80, 2 (1–3)	0.83 \pm 0.01 (0.67–0.90)	45
All sites	35% (68/197)	1.40, 1 (1–4)	0.82 \pm 0.01 (0.69–0.90)	148

doi:10.1371/journal.pone.0140780.t002

Halaba, all pairwise comparisons of the proportions of polyclonal infections and of the mean MOI demonstrated significant differences ($P < 0.05$). MOI did not differ significantly with either peripheral parasitemia ($\rho = 0.04$, $P = 0.558$) or patient age ($\rho = 0.12$, $P = 0.100$). In contrast to the complexity of infection, other than Badawacho ($H_E = 0.70$), *P. vivax* population diversity was consistently high across the sites (all $H_E = 0.83$). As detailed in the Supplementary Material (S5 Table), exclusion of the MS16 and msp1f3 loci did not have any notable impact on the polyclonality, MOI or population diversity in any of the study sites.

Relatedness

Neighbour-joining analysis of 181 isolates with no missing genotype data across the 8 loci highlighted clusters of isolates with 4 or more identical or near-identical multi-locus genotypes (MLGs) in Badawacho (Fig 2). The largest cluster (cluster 1) comprised 17 clonal infections with identical MLGs. A second cluster comprised two separate groups of related isolates, one with 4 identical MLGs (cluster 2a) and a second with 5 identical MLGs (cluster 2b). The isolates from the other sites exhibited overall lower genetic relatedness, with no more than two infections displaying identical MLGs.

All of the 17 isolates within cluster 1 were collected within two days of one another. A significant correlation was observed between the distance in sampling date and the proportion of alleles shared between infections in Badawacho (Mantel r -test, $r = 0.52$, $P = 1.0 \times 10^{-5}$). The correlations observed in the other sites were markedly lower, ranging from $r = 0.017$ in Arbaminch to $r = 0.070$ in Hawassa. In these three sites, only the correlation in Hawassa reached significance ($P = 0.036$).

Linkage Disequilibrium

LD levels varied markedly between the sites, ranging from $I_A^S = 0.006$ in Hawassa to $I_A^S = 0.322$ in Badawacho ($P < 0.05$ in all sites except Halaba) (Table 3). However comparable levels of LD were observed in all sites when the sample set was either restricted to monoclonal infections or after accounting for isolates with identical MLGs. The only exception being in Badawacho, where the LD level declined from $I_A^S = 0.322$ to 0.058 after adjusting for the repeated MLGs. Exclusion of the MS16 and msp1f3 loci did not have any notable impact on the patterns of LD in the study sites as detailed in the Supplementary Material (S6 Table).

Population Structure and Differentiation

Population differentiation was low ($F_{ST} < 0.2$) amongst the study sites (F_{ST} range: 0.001–0.1) (Table 4). The highest levels of genetic differentiation were observed in comparisons against Badawacho (F_{ST} range: 0.065–0.1). After adjusting for the high diversity of the markers using the standardised fixation index (F'_{ST}), differentiation remained low amongst the study sites except in comparisons against Badawacho, where the F'_{ST} ranged from 0.267 to 0.410

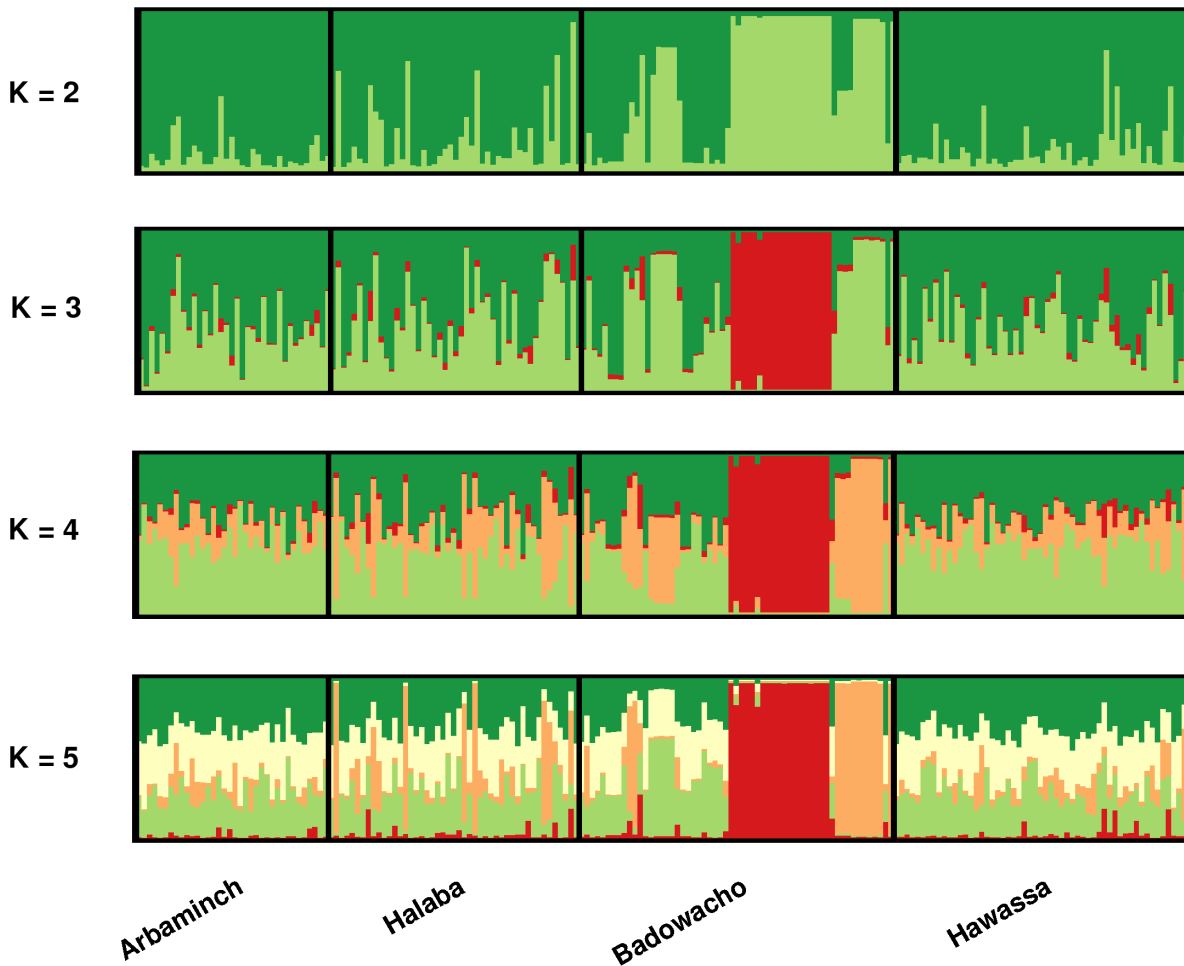


Fig 2. Unrooted neighbour-joining tree illustrating the genetic relatedness between the *P. vivax* isolates.

doi:10.1371/journal.pone.0140780.g002

Table 3. Linkage disequilibrium.

Site	All infections ¹		Low complexity ²		Unique MLGs ³	
	N	I_A^S	N	I_A^S	N	I_A^S
Arbaminch	35	0.020*	25 (71%)	0.026*	35 (100%)	0.020*
Halaba	44	0.009 ^{NS}	38 (86%)	0.003 ^{NS}	43 (98%)	0.006 ^{NS}
Badawacho	56	0.322*	53 (95%)	0.331*	25 (45%)	0.058*
Hawassa	46	0.006*	31 (67%)	0.015 ^{NS}	45 (98%)	4.0×10^{-4} NS
All sites	181	0.051*	147 (81%)	0.074*	148 (82%)	7.0×10^{-4} NS

¹Only samples with no missing data at all 8 loci are included in the analyses.

²Restricted multi-locus haplotypes from samples with no more than one multi-allelic locus.

³Unique set of multi-locus genotypes.

^{NS} Not significant ($P > 0.05$).

* $P < 0.05$.

doi:10.1371/journal.pone.0140780.t003

Table 4. Pair-wise differentiation between sites.

Site	Arbaminch	Halaba	Badawacho	Hawassa
Arbaminch	-	0.005	0.410	0.031
Halaba	0.001 ($P = 0.396$)	-	0.267	0.031
Badawacho	0.100 ($P < 1 \times 10^{-5}$)	0.065 ($P < 1 \times 10^{-5}$)	-	0.327
Hawassa	0.006 ($P = 0.117$)	0.005 ($P = 0.108$)	0.079 ($P < 1 \times 10^{-5}$)	-

F_{ST} (P -value) in lower left triangle. F'_{ST} in upper right triangle.

doi:10.1371/journal.pone.0140780.t004

(Table 4). Furthermore, there was no marked difference in either the F_{ST} or F'_{ST} results between the full (8 marker) data set and the reduced data with exclusion of MS16 and msp1f3 (Supplementary Material; S7 Table).

Analysis using STRUCTURE software revealed evidence of sub-structure in the *P. vivax* population, largely driven by the clusters of identical isolates in Badawacho. The delta K method identified the most likely number of populations within the dataset as two (i.e. $K = 2$) (S1 Fig). At $K = 2$, the isolates were largely divided by the clusters of identical isolates ($K2$) and all remaining isolates ($K1$) (Fig 3). At $K = 3$, the largest cluster of identical isolates was clearly resolved ($K3$) and at $K = 4$, a second cluster of identical isolates was resolved ($K4$). At higher estimates of K , no substantial changes were observed in the population structure.

Discussion

In the first survey of local trends in the genetic make-up of *P. vivax* in southern Ethiopia, significant variation was observed in population genetic parameters reflecting underlying differences in transmission between neighbouring populations. The insights derived from the genetic dynamics of the parasite population complement the traditional epidemiological surveillance approaches, and highlight a potential role for molecular surveillance in guiding evidence-based transmission intervention strategies.

One of the major differences observed amongst the districts was in the complexity of *P. vivax* infection. The proportions of polyclonal infections observed across the sites ranged from levels comparable to low endemic settings in Central China, Malaysia and pre-elimination regions of the Solomon Islands [15, 19, 25] (8% polyclonal infections in Badawacho), to higher transmission settings in Papua New Guinea and southeast Asia [20, 24, 28, 55] (67% polyclonal infections in Hawassa). In a previous study conducted at multiple sites in Indonesia, we observed a positive correlation between the rate of polyclonal infections and annual parasite incidence (API) indicating that polyclonality might provide a complementary gauge of local transmission intensity [55]. However, we did not observe the same trend in this study. The highest level of polyclonality (67%) was observed in Hawassa, which is home to one of the largest towns in the SNNPR: indeed Hawassa represented the most urban setting of the four sites investigated, exhibiting the second lowest *P. vivax* API (35 cases per 1,000 persons). It is possible that the high rates of polyclonal infection despite the low incidence in Hawassa might reflect the acquisition of malaria from satellite towns with higher *P. vivax* incidence on the outskirts of the main urban center. This pattern of malaria acquisition has previously been described in a study in Senegal, where individuals presented at health centers in Dakar having acquired ‘weekend malaria’ from small satellite towns surrounding the city [56]. Indeed, this trend might also explain the relatively older age of the patients from Hawassa (median 20 years) relative to the other sites (median age range from 6 to 14 years). With ever-increasing urbanization in malaria-endemic regions across the globe, further investigations will be needed

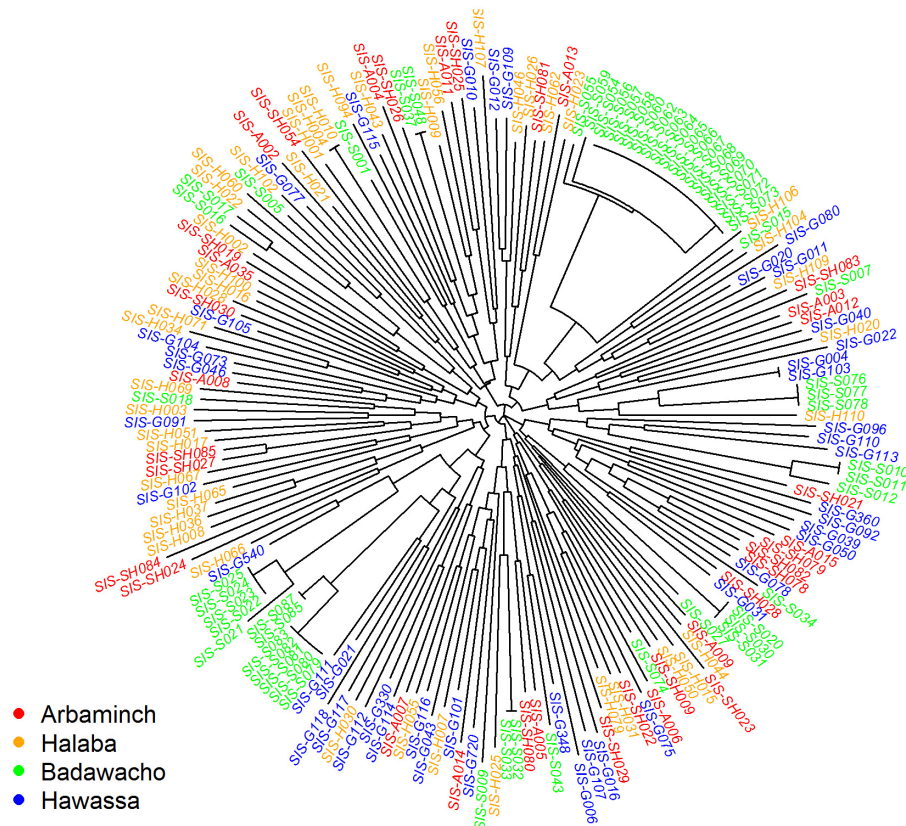


Fig 3. Population structure. Bar plots illustrating the population structure at $K = 2$, $K = 3$, $K = 4$ and $K = 5$. Each vertical bar represents an individual sample and each colour represents one of the K clusters (sub-populations) defined by STRUCTURE. For each sample, the predicted ancestry to each of the K sub-populations is represented by the colour-coded bars. $K1 =$ dark green, $K2 =$ light green, $K3 =$ red, $K4 =$ orange, and $K5 =$ white.

doi:10.1371/journal.pone.0140780.g003

to better understand the epidemiology of *P. vivax* in these settings. At the other end of the spectrum, the lowest rate of polyclonal infections was observed in Badawacho (8%), which represents a moderately rural setting and which exhibited the second highest *P. vivax* API amongst the study sites (41 cases per 1,000 persons). The low rate of polyclonal infections at this site likely reflected the unstable transmission dynamics described below. In addition to transmission patterns, patient and/or parasitological features might also influence estimates of infection complexity: however, we did not find any evidence of correlation between the proportion of polyclonal infections with patient age or parasite density within any of our study sites. Further investigations of the relationship between infection complexity and patient and parasitological details such as age, ethnicity and parasite density will require larger sample sizes in a broader range of endemic settings.

Another notable population genetic feature was the observation of large, distinct clusters of isolates with identical or near-identical multi-locus genotypes (MLGs) in Badawacho. The clonal nature of the clustered isolates, marked decline in population-level LD after accounting for repeated MLGs, and temporal clustering of identical strains, were all indicative of unstable transmission dynamics. Reaching a maximum elevation of 1,985 meters above sea level, the climate in Badawacho is especially amenable to unstable malaria transmission. Indeed, malaria had previously been eliminated from Badawacho in the 1960s but resurged several decades later, after the

change of government in 1991 when populations who had been resettled in the malaria-endemic Gambella and Metekel zones returned to Badawacho [57]. After the re-introduction of malaria into the district, a number of epidemic outbreaks were observed [57], likely affecting the non-immune host population who had resided in Badawacho throughout the resettlement events.

It remains unclear what specific mechanism(s) enabled the Badawacho isolates observed in the current study to expand rapidly, particularly in the case of cluster 1, which comprised 17 strains with identical MLGs. Inspection of the clinical records including the location of patients' homes did not reveal any evidence that the patients within any of the clusters were relatives or resided in the same households. The standing genetic diversity in Badawacho and the neighbouring districts was very high (mean H_E range from 0.7–0.8), hence the region could be harbouring multiple existing strains with enhanced transmission potential or drug resistance variants capable of rapid expansion under the right environmental /selective conditions. The patients from Badawacho were recruited from a clinical trial to determine the clinical efficacy of chloroquine against *P. vivax* (manuscript under review). However, 88.2% (15/17) of the infections in cluster 1 and 90% (9/10) of the infections in cluster 2 (a plus b) were cleared by day 28. Hence, the available evidence suggests that chloroquine resistance alone was not responsible for the successful expansion of the strains in clusters 1 and 2.

In Ethiopia, the health facilities are responsible for the surveillance of malaria outbreaks by means of monitoring clinical cases in healthcare facilities. However, in some regions, as many as 80% of patients with fever do not attend a health facility, and hence malaria outbreaks are often detected late after a high mortality and socio-economic burden has already been inflicted [13, 58]. Parasite genotyping may offer a complementary tool to existing malaria surveillance tools by detecting rapidly emerging strains associated that occur in the evolution of an epidemic, allowing local malaria control programs to implement appropriate interventions before the problem escalates. Prospective evaluation of the standard temporal dynamics in the local parasite genetic architecture will help to refine molecular surveillance to identify unusual and high-risk changes in the parasite population.

With the exception of Badawacho, the genetic differentiation between the study sites was generally low even after adjusting for the extensive marker diversity (F_{ST} range: 0.005–0.031). The higher differentiation observed in pairwise comparisons against Badawacho (F_{ST} range: 0.267–0.410) was likely inflated by the sampling of multiple repeated MLGs in the 'outbreak' clusters. The low differentiation suggests that parasites are readily spreading from one district to another. Such dynamics have important implications for the risks of drug resistance spread, and warranting diligent surveillance of local treatment efficacy.

As demonstrated in other endemic locations [18–22, 24, 25, 33, 37, 38, 40], *P. vivax* population diversity was high in all the sites in the current analysis ($H_E = 0.70–0.83$), with no apparent correlation with transmission intensity. The factor(s) responsible for this diversity remain unclear, but may include high recombination rates supported by the contribution of relapsing infections to the overall complexity of infection, and high rates of parasite gene flow within and across sites [28, 55]. The high levels of parasite diversity facilitates the parasite adaptation in response to drug pressure and changes in environmental conditions. The extensive population diversity ensures that individual *P. vivax* strains can be uniquely bar-coded or finger-printed with a small and cost-effective subset of markers [59], providing a viable means for high-throughput molecular surveillance to inform local transmission dynamics.

Supporting Information

S1 Fig. Delta K method: ΔK against K .
(TIFF)

S1 Table. Site details. ¹ Population estimate from 2012 based on data provided by the respective district and city administration health departments. Annual parasite incidence (API) in 2012 expressed as the number of reported cases per 1,000 population of the district(s) represented. Details on the number of reported cases in 2012 were provided by the respective district and city administration health departments.

(DOCX)

S2 Table. Complexity of infection and population diversity in *P. vivax* isolates from Arbaminch Hospital versus Shele Health Center (Arbaminch).

(DOCX)

S3 Table. Marker diversity.

(DOCX)

S4 Table. Individual *P. vivax* genotypes.

(XLSX)

S5 Table. Complexity of infection and population diversity: comparison with and without MS16 and msp1f3.

(DOCX)

S6 Table. Linkage disequilibrium: comparison with and without MS16 plus msp1f3.

(DOCX)

S7 Table. Pair-wise differentiation between sites: comparison with and without MS16 plus msp1f3.

(DOCX)

Acknowledgments

We would like to thank the patients who contributed their samples to the study and the health workers and field teams who generously assisted with the sample and metadata collections.

Author Contributions

Conceived and designed the experiments: SG RNP SA. Performed the experiments: SG ST. Analyzed the data: SG HT TGC SA. Contributed reagents/materials/analysis tools: BP AA. Wrote the paper: SG KT RNP SA. Supervised the work and provided scientific guidance: AA BP RNP SA.

References

1. Price RN, Tjitra E, Guerra CA, Yeung S, White NJ, Anstey NM. Vivax malaria: neglected and not benign. *The American journal of tropical medicine and hygiene*. 2007; 77(6 Suppl):79–87. PMID: [18165478](#); PubMed Central PMCID: PMC2653940.
2. Carlton JM, Sina BJ, Adams JH. Why is Plasmodium vivax a neglected tropical disease? *PLoS neglected tropical diseases*. 2011; 5(6):e1160. Epub 2011/07/09. doi: [10.1371/journal.pntd.0001160](#) PNTD-D-10-00099 [pii]. PMID: [21738804](#); PubMed Central PMCID: PMC3125139.
3. Mueller I, Galinski MR, Baird JK, Carlton JM, Kochar DK, Alonso PL, et al. Key gaps in the knowledge of Plasmodium vivax, a neglected human malaria parasite. *The Lancet infectious diseases*. 2009; 9(9):555–66. PMID: [19695492](#). doi: [10.1016/S1473-3099\(09\)70177-X](#)
4. Guerra CA, Howes RE, Patil AP, Gething PW, Van Boeckel TP, Temperley WH, et al. The international limits and population at risk of Plasmodium vivax transmission in 2009. *PLoS neglected tropical diseases*. 2010; 4(8):e774. Epub 2010/08/07. doi: [10.1371/journal.pntd.0000774](#) PMID: [20689816](#); PubMed Central PMCID: PMC2914753.

5. FMOH. Malaria Diagnosis and Treatment Guidelines for Health Workers in Ethiopia. 2nd edition. Addis Ababa, Ethiopia: Federal Ministry of Health. 2004.
6. Mathews HM, Armstrong JC. Duffy blood types and vivax malaria in Ethiopia. *The American journal of tropical medicine and hygiene*. 1981; 30(2):299–303. PMID: [7015888](#).
7. Hwang J, Alemayehu BH, Reithinger R, Tekleyohannes SG, Takele T, Birhanu SG, et al. In vivo efficacy of artemether-lumefantrine and chloroquine against *Plasmodium vivax*: a randomized open label trial in central Ethiopia. *PloS one*. 2013; 8(5):e63433. doi: [10.1371/journal.pone.0063433](#) PMID: [23717423](#); PubMed Central PMCID: PMC3661577.
8. Tulu AN, Webber RH, Schellenberg JA, Bradley DJ. Failure of chloroquine treatment for malaria in the highlands of Ethiopia. *Transactions of the Royal Society of Tropical Medicine and Hygiene*. 1996; 90(5):556–7. PMID: [8944273](#).
9. Teka H, Petros B, Yamuah L, Tesfaye G, Elhassan I, Muchohi S, et al. Chloroquine-resistant *Plasmodium vivax* malaria in Debre Zeit, Ethiopia. *Malaria journal*. 2008; 7:220. doi: [10.1186/1475-2875-7-220](#) PMID: [18959774](#); PubMed Central PMCID: PMC2584068.
10. Ketema T, Bacha K, Birhanu T, Petros B. Chloroquine-resistant *Plasmodium vivax* malaria in Serbo town, Jimma zone, south-west Ethiopia. *Malaria journal*. 2009; 8:177. doi: [10.1186/1475-2875-8-177](#) PMID: [19642976](#); PubMed Central PMCID: PMC3224920.
11. Feachem RG, Phillips AA, Hwang J, Cotter C, Wielgosz B, Greenwood BM, et al. Shrinking the malaria map: progress and prospects. *Lancet*. 2010; 376(9752):1566–78. doi: [10.1016/S0140-6736\(10\)61270-6](#) PMID: [21035842](#); PubMed Central PMCID: PMC3044848.
12. Cotter C, Sturrock HJ, Hsiang MS, Liu J, Phillips AA, Hwang J, et al. The changing epidemiology of malaria elimination: new strategies for new challenges. *Lancet*. 2013; 382(9895):900–11. doi: [10.1016/S0140-6736\(13\)60310-4](#) PMID: [23594387](#).
13. Negash K, Kebede A, Medhin A, Argaw D, Babaniyi O, Guintran JO, et al. Malaria epidemics in the highlands of Ethiopia. *East African medical journal*. 2005; 82(4):186–92. PMID: [16122086](#).
14. MOH. Five Year (2001–2005) National strategic plan for malaria prevention and control in Ethiopia. RBM/Ministry of Health. Addis Ababa, Ethiopia. 2000.
15. Abdullah NR, Barber BE, William T, Norahmad NA, Satsu UR, Muniandy PK, et al. *Plasmodium vivax* population structure and transmission dynamics in Sabah Malaysia. *PloS one*. 2013; 8(12):e82553. doi: [10.1371/journal.pone.0082553](#) PMID: [24358203](#); PubMed Central PMCID: PMC3866266.
16. Anderson TJ, Haubold B, Williams JT, Estrada-Franco JG, Richardson L, Mollinedo R, et al. Microsatellite markers reveal a spectrum of population structures in the malaria parasite *Plasmodium falciparum*. *Molecular biology and evolution*. 2000; 17(10):1467–82. Epub 2000/10/06. PMID: [11018154](#).
17. Anthony TG, Conway DJ, Cox-Singh J, Matusop A, Ratnam S, Shamsul S, et al. Fragmented population structure of *Plasmodium falciparum* in a region of declining endemicity. *The Journal of infectious diseases*. 2005; 191(9):1558–64. Epub 2005/04/06. JID33667 [pii] doi: [10.1086/429338](#) PMID: [15809916](#).
18. Ferreira MU, Karunaweera ND, da Silva-Nunes M, da Silva NS, Wirth DF, Hartl DL. Population structure and transmission dynamics of *Plasmodium vivax* in rural Amazonia. *The Journal of infectious diseases*. 2007; 195(8):1218–26. Epub 2007/03/16. JID37628 [pii] doi: [10.1086/512685](#) PMID: [17357061](#).
19. Gray KA, Dowd S, Bain L, Bobogare A, Wini L, Shanks GD, et al. Population genetics of *Plasmodium falciparum* and *Plasmodium vivax* and asymptomatic malaria in Temotu Province, Solomon Islands. *Malaria journal*. 2013; 12:429. doi: [10.1186/1475-2875-12-429](#) PMID: [24261646](#).
20. Gunawardena S, Karunaweera ND, Ferreira MU, Phone-Kyaw M, Pollack RJ, Alifrangis M, et al. Geographic structure of *Plasmodium vivax*: microsatellite analysis of parasite populations from Sri Lanka, Myanmar, and Ethiopia. *The American journal of tropical medicine and hygiene*. 2010; 82(2):235–42. Epub 2010/02/06. 82/2/235 [pii] doi: [10.4269/ajtmh.2010.09-0588](#) PMID: [20133999](#); PubMed Central PMCID: PMC2813164.
21. Imwong M, Nair S, Pukrittayakamee S, Sudimack D, Williams JT, Mayxay M, et al. Contrasting genetic structure in *Plasmodium vivax* populations from Asia and South America. *International journal for parasitology*. 2007; 37(8–9):1013–22. PMID: [17442318](#).
22. Iwagami M, Fukumoto M, Hwang SY, Kim SH, Kho WG, Kano S. Population structure and transmission dynamics of *Plasmodium vivax* in the Republic of Korea based on microsatellite DNA analysis. *PLoS neglected tropical diseases*. 2012; 6(4):e1592. doi: [10.1371/journal.pntd.0001592](#) PMID: [22509416](#); PubMed Central PMCID: PMC3317904.
23. Iwagami M, Rivera PT, Villacorte EA, Escueta AD, Hatabu T, Kawazu S, et al. Genetic diversity and population structure of *Plasmodium falciparum* in the Philippines. *Malaria journal*. 2009; 8:96. doi: [10.1186/1475-2875-8-96](#) PMID: [19422722](#); PubMed Central PMCID: PMC2685811.

24. Koepfli C, Timinao L, Antao T, Barry AE, Siba P, Mueller I, et al. A Large Reservoir and Little Population Structure in the South Pacific. *PLoS one*. 2013; 8(6):e66041. doi: [10.1371/journal.pone.0066041](https://doi.org/10.1371/journal.pone.0066041) PMID: [23823758](https://pubmed.ncbi.nlm.nih.gov/23823758/); PubMed Central PMCID: PMC3688846.
25. Liu Y, Auburn S, Cao J, Trimarsanto H, Zhou H, Gray KA, et al. Genetic diversity and population structure of *Plasmodium vivax* in Central China. *Malaria journal*. 2014; 13(1):262. doi: [10.1186/1475-2875-13-262](https://doi.org/10.1186/1475-2875-13-262) PMID: [25008859](https://pubmed.ncbi.nlm.nih.gov/25008859/).
26. Machado RL, Povoas MM, Calvosa VS, Ferreira MU, Rossit AR, dos Santos EJ, et al. Genetic structure of *Plasmodium falciparum* populations in the Brazilian Amazon region. *The Journal of infectious diseases*. 2004; 190(9):1547–55. doi: [10.1086/424601](https://doi.org/10.1086/424601) PMID: [15478058](https://pubmed.ncbi.nlm.nih.gov/15478058/).
27. Mobegi VA, Loua KM, Ahouidi AD, Satoguina J, Nwakanma DC, Amambua-Ngwa A, et al. Population genetic structure of *Plasmodium falciparum* across a region of diverse endemicity in West Africa. *Malaria journal*. 2012; 11:223. doi: [10.1186/1475-2875-11-223](https://doi.org/10.1186/1475-2875-11-223) PMID: [22759447](https://pubmed.ncbi.nlm.nih.gov/22759447/); PubMed Central PMCID: PMC3425276.
28. Orjuela-Sanchez P, Sa JM, Brandi MC, Rodrigues PT, Bastos MS, Amaratunga C, et al. Higher microsatellite diversity in *Plasmodium vivax* than in sympatric *Plasmodium falciparum* populations in Pursat, Western Cambodia. *Experimental parasitology*. 2013; 134(3):318–26. doi: [10.1016/j.exppara.2013.03.029](https://doi.org/10.1016/j.exppara.2013.03.029) PMID: [23562882](https://pubmed.ncbi.nlm.nih.gov/23562882/); PubMed Central PMCID: PMC3691688.
29. Pumpaibool T, Arnathau C, Durand P, Kanchanakhan N, Siripoon N, Suegorn A, et al. Genetic diversity and population structure of *Plasmodium falciparum* in Thailand, a low transmission country. *Malaria journal*. 2009; 8:155. doi: [10.1186/1475-2875-8-155](https://doi.org/10.1186/1475-2875-8-155) PMID: [19602241](https://pubmed.ncbi.nlm.nih.gov/19602241/); PubMed Central PMCID: PMC2722663.
30. Rebaudet S, Bogreau H, Silai R, Lepere JF, Bertaux L, Pradines B, et al. Genetic structure of *Plasmodium falciparum* and elimination of malaria, Comoros archipelago. *Emerging infectious diseases*. 2010; 16(11):1686–94. doi: [10.3201/eid1611.100694](https://doi.org/10.3201/eid1611.100694) PMID: [21029525](https://pubmed.ncbi.nlm.nih.gov/21029525/); PubMed Central PMCID: PMC3294527.
31. Rezende AM, Tarazona-Santos E, Couto AD, Fontes CJ, De Souza JM, Carvalho LH, et al. Analysis of genetic variability of *Plasmodium vivax* isolates from different Brazilian Amazon areas using tandem repeats. *The American journal of tropical medicine and hygiene*. 2009; 80(5):729–33. Epub 2009/05/02. 80/5/729 [pii]. PMID: [19407114](https://pubmed.ncbi.nlm.nih.gov/19407114/).
32. Schousboe ML, Ranjitkar S, Rajakaruna RS, Amerasinghe PH, Konradsen F, Morales F, et al. Global and local genetic diversity at two microsatellite loci in *Plasmodium vivax* parasites from Asia, Africa and South America. *Malaria journal*. 2014; 13:392. doi: [10.1186/1475-2875-13-392](https://doi.org/10.1186/1475-2875-13-392) PMID: [25277367](https://pubmed.ncbi.nlm.nih.gov/25277367/); PubMed Central PMCID: PMC4200131.
33. Van den Eede P, Erhart A, Van der Auwera G, Van Overmeir C, Thang ND, Hung le X, et al. High complexity of *Plasmodium vivax* infections in symptomatic patients from a rural community in central Vietnam detected by microsatellite genotyping. *The American journal of tropical medicine and hygiene*. 2010; 82(2):223–7. Epub 2010/02/06. 82/2/223 [pii] doi: [10.4269/ajtmh.2010.09-0458](https://doi.org/10.4269/ajtmh.2010.09-0458) PMID: [20133996](https://pubmed.ncbi.nlm.nih.gov/20133996/); PubMed Central PMCID: PMC2813161.
34. Van den Eede P, Van der Auwera G, Delgado C, Huyse T, Soto-Calle VE, Gamboa D, et al. Multilocus genotyping reveals high heterogeneity and strong local population structure of the *Plasmodium vivax* population in the Peruvian Amazon. *Malaria journal*. 2010; 9:151. Epub 2010/06/08. 1475-2875-9-151 [pii] doi: [10.1186/1475-2875-9-151](https://doi.org/10.1186/1475-2875-9-151) PMID: [20525233](https://pubmed.ncbi.nlm.nih.gov/20525233/); PubMed Central PMCID: PMC2898784.
35. Schultz L, Wapling J, Mueller I, Ntsuke PO, Senn N, Nale J, et al. Multilocus haplotypes reveal variable levels of diversity and population structure of *Plasmodium falciparum* in Papua New Guinea, a region of intense perennial transmission. *Malaria journal*. 2010; 9:336. doi: [10.1186/1475-2875-9-336](https://doi.org/10.1186/1475-2875-9-336) PMID: [21092231](https://pubmed.ncbi.nlm.nih.gov/21092231/); PubMed Central PMCID: PMC3002378.
36. Arnott A, Barry AE, Reeder JC. Understanding the population genetics of *Plasmodium vivax* is essential for malaria control and elimination. *Malaria journal*. 2012; 11:14. doi: [10.1186/1475-2875-11-14](https://doi.org/10.1186/1475-2875-11-14) PMID: [22233585](https://pubmed.ncbi.nlm.nih.gov/22233585/); PubMed Central PMCID: PMC3298510.
37. Koepfli C, Rodrigues PT, Antao T, Orjuela-Sanchez P, Van den Eede P, Gamboa D, et al. *Plasmodium vivax* Diversity and Population Structure across Four Continents. *PLoS neglected tropical diseases*. 2015; 9(6):e0003872. doi: [10.1371/journal.pntd.0003872](https://doi.org/10.1371/journal.pntd.0003872) PMID: [26125189](https://pubmed.ncbi.nlm.nih.gov/26125189/); PubMed Central PMCID: PMC4488360.
38. Jennison C, Arnott A, Tessier N, Tavul L, Koepfli C, Felger I, et al. *Plasmodium vivax* populations are more genetically diverse and less structured than sympatric *Plasmodium falciparum* populations. *PLoS neglected tropical diseases*. 2015; 9(4):e0003634. doi: [10.1371/journal.pntd.0003634](https://doi.org/10.1371/journal.pntd.0003634) PMID: [25874894](https://pubmed.ncbi.nlm.nih.gov/25874894/); PubMed Central PMCID: PMC4398418.
39. Gething PW, Elyazar IR, Moyes CL, Smith DL, Battle KE, Guerra CA, et al. A long neglected world malaria map: *Plasmodium vivax* endemicity in 2010. *PLoS neglected tropical diseases*. 2012; 6(9):e1814. doi: [10.1371/journal.pntd.0001814](https://doi.org/10.1371/journal.pntd.0001814) PMID: [22970336](https://pubmed.ncbi.nlm.nih.gov/22970336/); PubMed Central PMCID: PMC3435256.

40. Karunaweera ND, Ferreira MU, Munasinghe A, Barnwell JW, Collins WE, King CL, et al. Extensive microsatellite diversity in the human malaria parasite *Plasmodium vivax*. *Gene*. 2008; 410(1):105–12. Epub 2008/01/30. S0378-1119(07)00614-2 [pii] doi: [10.1016/j.gene.2007.11.022](https://doi.org/10.1016/j.gene.2007.11.022) PMID: [18226474](https://pubmed.ncbi.nlm.nih.gov/18226474/).
41. Koepfli C, Mueller I, Marfurt J, Goroti M, Sie A, Oa O, et al. Evaluation of *Plasmodium vivax* genotyping markers for molecular monitoring in clinical trials. *The Journal of infectious diseases*. 2009; 199(7):1074–80. PMID: [19275476](https://pubmed.ncbi.nlm.nih.gov/19275476/). doi: [10.1086/597303](https://doi.org/10.1086/597303)
42. APMEN Vivax Working Group website. Available: www.apmen.org/vivax/. Accessed 23 February 2015.
43. Anderson TJ, Su XZ, Bockarie M, Lagog M, Day KP. Twelve microsatellite markers for characterization of *Plasmodium falciparum* from finger-prick blood samples. *Parasitology*. 1999; 119 (Pt 2):113–25. Epub 1999/08/31. PMID: [10466118](https://pubmed.ncbi.nlm.nih.gov/10466118/).
44. Excoffier L, Lischer HE. Arlequin suite ver 3.5: a new series of programs to perform population genetics analyses under Linux and Windows. *Molecular ecology resources*. 2010; 10(3):564–7. Epub 2011/05/14. doi: [10.1111/j.1755-0998.2010.02847.x](https://doi.org/10.1111/j.1755-0998.2010.02847.x) PMID: [21565059](https://pubmed.ncbi.nlm.nih.gov/21565059/).
45. Hedrick PW. A standardized genetic differentiation measure. *Evolution; international journal of organic evolution*. 2005; 59(8):1633–8. Epub 2005/12/07. PMID: [16329237](https://pubmed.ncbi.nlm.nih.gov/16329237/).
46. Pritchard JK, Stephens M, Donnelly P. Inference of population structure using multilocus genotype data. *Genetics*. 2000; 155(2):945–59. Epub 2000/06/03. PMID: [10835412](https://pubmed.ncbi.nlm.nih.gov/10835412/); PubMed Central PMCID: PMC1461096.
47. Evanno G, Regnaut S, Goudet J. Detecting the number of clusters of individuals using the software STRUCTURE: a simulation study. *Mol Ecol*. 2005; 14(8):2611–20. Epub 2005/06/23. MEC2553 [pii] doi: [10.1111/j.1365-294X.2005.02553.x](https://doi.org/10.1111/j.1365-294X.2005.02553.x) PMID: [15969739](https://pubmed.ncbi.nlm.nih.gov/15969739/).
48. Rosenberg NA. *Distrupt*: a program for the graphical display of population structure. *Molecular Ecology Notes*. 2004; 4:137–8.
49. Haubold B, Hudson RR. LIAN 3.0: detecting linkage disequilibrium in multilocus data. *Linkage Analysis. Bioinformatics*. 2000; 16(9):847–8. Epub 2000/12/08. PMID: [11108709](https://pubmed.ncbi.nlm.nih.gov/11108709/).
50. Bowcock AM, Ruiz-Linares A, Tomfohrde J, Minch E, Kidd JR, Cavalli-Sforza LL. High resolution of human evolutionary trees with polymorphic microsatellites. *Nature*. 1994; 368(6470):455–7. Epub 1994/03/31. doi: [10.1038/368455a0](https://doi.org/10.1038/368455a0) PMID: [7510853](https://pubmed.ncbi.nlm.nih.gov/7510853/).
51. Saitou N, Nei M. The neighbor-joining method: a new method for reconstructing phylogenetic trees. *Molecular biology and evolution*. 1987; 4(4):406–25. Epub 1987/07/01. PMID: [3447015](https://pubmed.ncbi.nlm.nih.gov/3447015/).
52. Paradis E, Claude J, Strimmer K. APE: Analyses of Phylogenetics and Evolution in R language. *Bioinformatics*. 2004; 20(2):289–90. Epub 2004/01/22. PMID: [14734327](https://pubmed.ncbi.nlm.nih.gov/14734327/).
53. Dray S, Dufour AB. The ade4 package: implementing the duality diagram for ecologists. *Journal of Statistical Software* 2007; 22(4):1–20.
54. Sutton PL. A call to arms: on refining *Plasmodium vivax* microsatellite marker panels for comparing global diversity. *Malaria journal*. 2013; 12:447. doi: [10.1186/1475-2875-12-447](https://doi.org/10.1186/1475-2875-12-447) PMID: [24330329](https://pubmed.ncbi.nlm.nih.gov/24330329/); PubMed Central PMCID: PMC3878832.
55. Noviyanti R, Coutrier F, Utami RA, Trimarsanto H, Tirta YK, Trianty L, et al. Contrasting Transmission Dynamics of Co-endemic *Plasmodium vivax* and *P. falciparum*: Implications for Malaria Control and Elimination. *PLoS neglected tropical diseases*. 2015; 9(5):e0003739. doi: [10.1371/journal.pntd.0003739](https://doi.org/10.1371/journal.pntd.0003739) PMID: [25951184](https://pubmed.ncbi.nlm.nih.gov/25951184/); PubMed Central PMCID: PMC4423885.
56. Bogreau H, Renaud F, Bouchiba H, Durand P, Assi SB, Henry MC, et al. Genetic diversity and structure of African *Plasmodium falciparum* populations in urban and rural areas. *The American journal of tropical medicine and hygiene*. 2006; 74(6):953–9. PMID: [16760503](https://pubmed.ncbi.nlm.nih.gov/16760503/).
57. SERA. Vulnerability Profile for Badawacho Woreda (district); Strengthening Emergency Response Abilities Project; Disaster Prevention and Preparedness Commission and United States Agency for International Development. 2000.
58. Macro CSAaO. Ethiopian Demographic and Health Survey 2000. Addis Ababa, Ethiopia and Calverton, Maryland, USA: Central Statistical Authority and ORC Macro. (EDHS 2000). 2000.
59. Baniecki ML, Faust AL, Schaffner SF, Park DJ, Galinsky K, Daniels RF, et al. Development of a single nucleotide polymorphism barcode to genotype *Plasmodium vivax* infections. *PLoS neglected tropical diseases*. 2015; 9(3):e0003539. doi: [10.1371/journal.pntd.0003539](https://doi.org/10.1371/journal.pntd.0003539) PMID: [25781890](https://pubmed.ncbi.nlm.nih.gov/25781890/); PubMed Central PMCID: PMC4362761.