



Mpimbaza, A; Miles, M; Sserwanga, A; Kigozi, R; Wanzira, H; Rubahika, D; Nasr, S; Kapella, BK; Yoon, SS; Chang, M; Yeka, A; Staedke, SG; Kanya, MR; Dorsey, G (2015) Comparison of Routine Health Management Information System Versus Enhanced Inpatient Malaria Surveillance for Estimating the Burden of Malaria Among Children Admitted to Four Hospitals in Uganda. *The American journal of tropical medicine and hygiene*, 92 (1). pp. 18-21. ISSN 0002-9637 DOI: <https://doi.org/10.4269/ajtmh.14-0284>

Downloaded from: <http://researchonline.lshtm.ac.uk/2030936/>

DOI: [10.4269/ajtmh.14-0284](https://doi.org/10.4269/ajtmh.14-0284)

#### Usage Guidelines

Please refer to usage guidelines at <http://researchonline.lshtm.ac.uk/policies.html> or alternatively contact [researchonline@lshtm.ac.uk](mailto:researchonline@lshtm.ac.uk).

Available under license: <http://creativecommons.org/licenses/by-nc-nd/2.5/>

## Short Report: Comparison of Routine Health Management Information System Versus Enhanced Inpatient Malaria Surveillance for Estimating the Burden of Malaria Among Children Admitted to Four Hospitals in Uganda

Arthur Mpimbaza,\* Melody Miles, Asadu Sserwanga, Ruth Kigozi, Humphrey Wanzira, Denis Rubahika, Sussann Nasr, Bryan K. Kapella, Steven S. Yoon, Michelle Chang, Adoke Yeka, Sarah G. Staedke, Moses R. Kamya, and Grant Dorsey  
*Child Health and Development Centre, Makerere University College of Health Sciences, Kampala, Uganda; Infectious Diseases Research Collaboration, Kampala, Uganda; National Malaria Control Program, Ministry of Health Uganda, Kampala, Uganda; US President's Malaria Initiative, Malaria Branch, Centers for Disease Control and Prevention, Atlanta, Georgia; School of Public Health, Makerere University College of Health Sciences, Kampala, Uganda; London School of Hygiene and Tropical Medicine, London, United Kingdom; Department of Medicine, Makerere University College of Health Sciences, Kampala, Uganda; Department of Medicine, San Francisco General Hospital, University of California, San Francisco, California*

**Abstract.** The primary source of malaria surveillance data in Uganda is the Health Management Information System (HMIS), which does not require laboratory confirmation of reported malaria cases. To improve data quality, an enhanced inpatient malaria surveillance system (EIMSS) was implemented with emphasis on malaria testing of all children admitted in select hospitals. Data were compared between the HMIS and the EIMSS at four hospitals over a period of 12 months. After the implementation of the EIMSS, over 96% of admitted children under 5 years of age underwent laboratory testing for malaria. The HMIS significantly overreported the proportion of children under 5 years of age admitted with malaria (average absolute difference = 19%, range = 8–27% across the four hospitals) compared with the EIMSS. To improve the quality of the HMIS data for malaria surveillance, the National Malaria Control Program should, in addition to increasing malaria testing rates, focus on linking laboratory test results to reported malaria cases.

Uganda has made significant efforts to reduce the burden of malaria through scaling up of effective tools for malaria control, notably long-lasting insecticide-treated nets, indoor residual spraying of insecticides, treatment with artemisinin-based combination therapies, and intermittent preventive therapy in pregnancy.<sup>1</sup> Despite progress in these efforts, there is much work to be done to achieve the objective of a > 75% decrease in the malaria admission rate by 2015.<sup>2,3</sup>

Demand for high-quality malaria surveillance data to monitor progress and evaluate the effectiveness of interventions is greater than ever before.<sup>4</sup> However, malaria surveillance is often limited by non-specific case definitions and imperfect data collection tools and indicators.<sup>3,5</sup> The Ugandan National Malaria Control Program (NMCP) malaria surveillance relies on Health Management Information System (HMIS) data from monthly health facility summary forms. However, the usefulness of the HMIS data is limited by incomplete or delayed reporting, poor data quality, and lack of malaria-specific data based on laboratory confirmation.<sup>6,7</sup>

To improve malaria surveillance in Uganda, the NMCP working with the Uganda Malaria Surveillance Program (UMSP) with support from the US President's Malaria Initiative implemented the enhanced inpatient malaria surveillance system (EIMSS) at six public hospitals.<sup>8</sup> This program collects high-quality malaria data by emphasizing universal malaria laboratory testing for all hospitalized children and collecting and reporting laboratory-confirmed malaria cases using a computerized patient database. The program is limited to collection of data in the children's wards of participating hospitals. We evaluated the accuracy of the HMIS malaria data by using the EIMSS data as the gold standard.

The EIMSS was set up from April of 2010 to June of 2011 in four government-run hospitals: Tororo, Apac, Mubende, and Kambuga (Figure 1). Tororo, Apac, and Kambuga are general hospitals providing basic inpatient health services. Mubende was recently elevated to a regional referral hospital. Tororo District Hospital and Mubende Regional Hospital are in areas of high malaria endemicity (parasite rates in children 2–9 years old > 50%). Apac District Hospital is in an area that was previously highly endemic but has become moderately endemic (parasite rate = 30–50%) after the introduction of indoor residual spraying of insecticide. Kambuga District Hospital is in a highland area with relatively low endemicity (parasite rate < 20%).

The EIMSS included (1) the use of a standardized structured medical record form (MRF) for the documentation of patient details (presenting symptoms and signs, laboratory test results, treatment administered, diagnosis, and final outcome on discharge); (2) laboratory testing for parasitemia using microscopy for all admitted children, regardless of presentation; and (3) training and routine supervision of hospital staff as well as supply of essential materials, like MRFs. Individual patient information captured on MRFs was entered into an Epi Info database (Centers for Disease Control and Prevention, Atlanta, GA). To increase malaria testing rates at the sites, the UMSP provided direct support to the laboratories in the form of training of microscopists and supplying essential materials and reagents required for malaria microscopy.

Data were transmitted approximately 2 weeks after the end of each month to a central location for cleaning, analysis, and reporting. The reported results included total number of admissions, number tested for malaria, and number of laboratory-confirmed malaria cases. For the HMIS, data were obtained from the HMIS monthly summary forms and included total admissions and numbers of malaria cases (final diagnosis of clinical malaria). Comparison between the EIMSS and the HMIS was limited to the children under 5 years old age group, because the EIMSS is limited to the children's ward.

\*Address correspondence to Arthur Mpimbaza, Child Health and Development Centre, Makerere University College of Health Sciences, PO Box 6717, Kampala, Uganda. E-mail: arthurwagk@yahoo.com

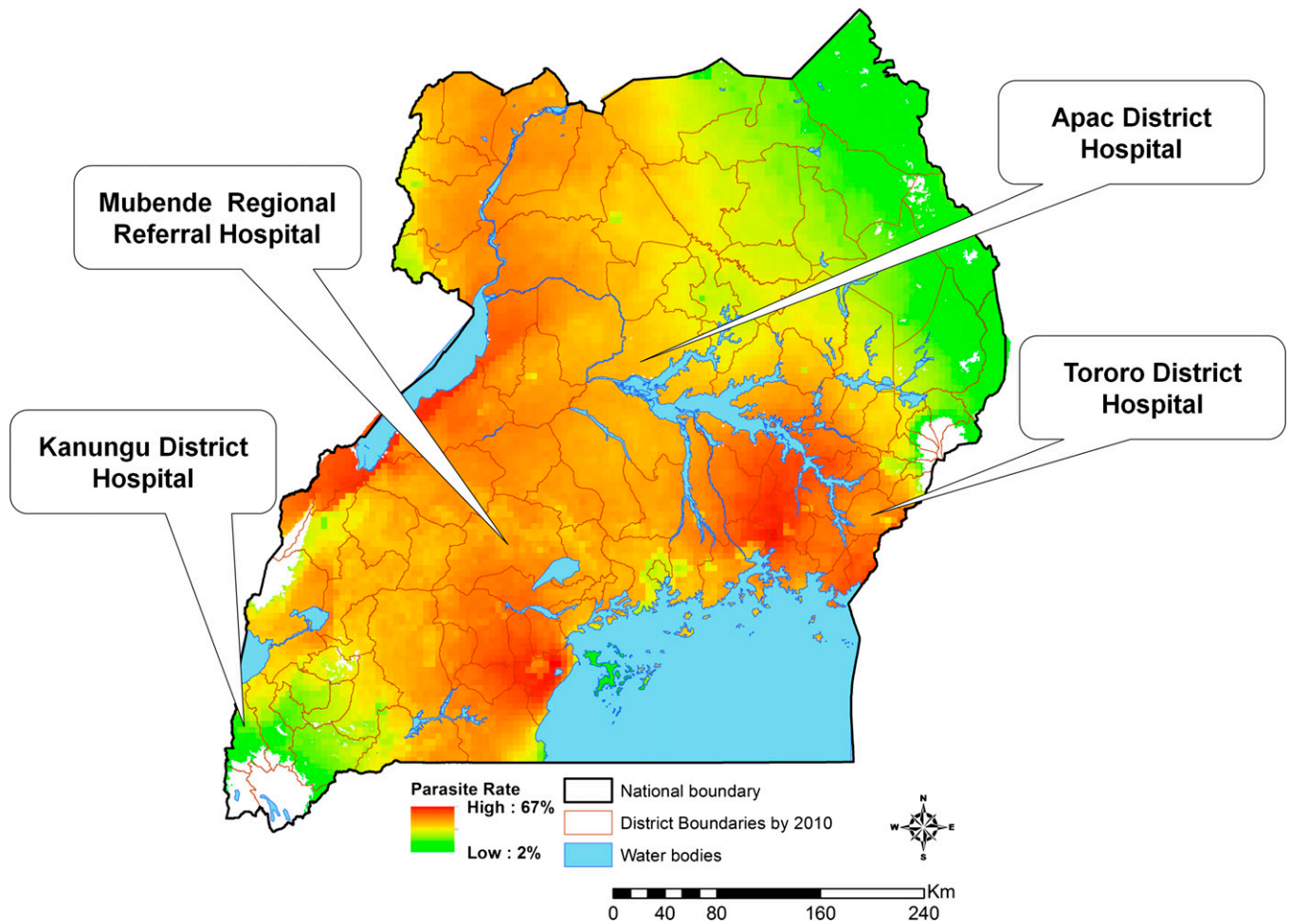


FIGURE 1. Study sites. Parasite rate is based on the estimated proportion of children 2–9 years of age with a positive blood smear based on cross-sectional surveys.

The indicator of interest for the comparison between the HMIS and the EIMSS was the proportion of children admitted with malaria. For the HMIS, this indicator was calculated using the number of children given a clinical diagnosis of malaria as the numerator and the total number of admissions as the denominator. For the EIMSS, the number of children with laboratory-confirmed malaria was the numerator, and the number of children tested for malaria was the denominator. Data from both systems were analyzed for 12 months after the implementation of the EIMSS. For comparison purposes, the HMIS data from the 12-month period before the implementation of the EIMSS were also reviewed. Results are presented for only four of six sites where the EIMSS was introduced because of problems with the HMIS forms in two hospitals: the forms were destroyed at one site (Kabale) and not filled out at another site (Jinja) because of a staffing shortage. The proportions of malaria cases admitted during a 12-month period after the start of the program at each site were compared using the  $\chi^2$  test. Any  $P$  value  $< 0.05$  was considered statistically significant.

During the 12-month period after the implementation of the EIMSS, the total numbers of admissions reported by the HMIS and the EIMSS were similar in three hospitals (Apac, Mubende, and Kambuga), but they were different at Tororo Hospital (HMIS: 4,385 versus EIMSS: 5,571) (Table 1). The

proportion of admitted children who were laboratory-tested ranged from 94% to 98% at the four hospitals after the EIMSS implementation (Table 1). Through training, supply of essential reagents, and continuous supervision, the UMSP was able to maintain high testing rates at all four hospitals. This achievement suggests that near-universal testing for malaria in the inpatient setting is feasible beyond the sentinel sites.

The HMIS reported significantly greater numbers of malaria cases and therefore, higher proportions of patients with malaria diagnosis compared with the EIMSS at all four hospitals. This is a reflection of the case definitions used by the two systems—clinical versus laboratory-confirmed (Table 1): Tororo (85% versus 62%,  $P < 0.001$ ), Kambuga (52% versus 25%,  $P < 0.001$ ), Mubende (54% versus 38%,  $P < 0.001$ ), and Apac (47% versus 39%,  $P < 0.001$ ). The differences between the two systems were relatively consistent month to month at two of the sites (Tororo and Kambuga) but inconsistent at the two other sites (Apac and Mubende) (Figure 2).

Interestingly, the HMIS reported a statistically significant reduction in the proportion of children under 5 years of age diagnosed with malaria at all four hospitals after the implementation of the EIMSS: Tororo (94% versus 85%,  $P < 0.001$ ), Kambuga (84% versus 52%,  $P < 0.001$ ), Mubende (65% versus 54%,  $P < 0.001$ ), and Apac (68% versus 47%,  $P < 0.001$ ) (Figure 2 and Table 1). Although these differences could have

TABLE 1  
Routine and enhanced surveillance reporting of pediatric malaria in four district hospitals in Uganda

Hospital	Start date	Routine HMIS surveillance data				Enhanced surveillance data (12-month period after start date)		
		12-Month period before start date		12-Month period after start date		Total admissions	Number tested (% total admissions)	Number of confirmed malaria cases† (% number tested)
		Total admissions	Number of malaria cases* (% total admissions)	Total admissions	Number of malaria cases* (% total admissions)			
Tororo Hospital	April of 2010	5,526	5,214 (94)	4,385	3,747 (85)	5,657	5,571 (98)	3,459 (62)
Kambuga Hospital	January of 2011	2,106	1,767 (84)	1,538	793 (52)	1,559	1,530 (98)	384 (25)
Mubende Hospital	April of 2011	2,215	1,444 (65)	2,930	1,581 (54)	2,890	2,717 (94)	1,020 (38)
Apac Hospital	June of 2011	2,115	1,429 (68)	1,925	904 (47)	2,110	1,927 (98)	754 (39)

Only data for children less than 5 years of age are included.  
\*Based on a clinical diagnosis of malaria.  
†Laboratory confirmed (microscopy).

been caused by real changes in the burden of malaria, these decreases were more likely because of the greater use of laboratory test results when making malaria diagnoses after the implementation of the EIMSS.

There are several limitations to this study that could influence the interpretation of the results. First, the study was conducted in hospitals serving as malaria sentinel sites, where the quality of the HMIS could have been influenced by the ongoing sentinel surveillance work. Second, we do not know whether the quality of the HMIS at two sites not included in the analysis was substantially different from the quality at the other sites. Third, because the EIMSS is limited to children under 5 years of age, we do not know about the performance and the quality of data reporting for older age groups.

Despite these limitations, we show that the proportions of children with malaria reported by the HMIS were statistically significantly greater than those reported by the EIMSS. Most of these differences are likely caused by the differences in case definitions used by the HMIS and the EIMSS.<sup>3,9</sup> Even when malaria laboratory tests are performed, the HMIS is not designed to link test results with diagnosis, which is a fundamental limitation of current HMIS malaria data. In addition, the reliance of the HMIS on paper forms and manual tabulation could contribute to observed differences.<sup>10</sup>

Malaria diagnosis based on clinical observation without laboratory confirmation is a common practice in Uganda for many reasons. First, until recently, the World Health Organization recommended presumptive treatment of suspect

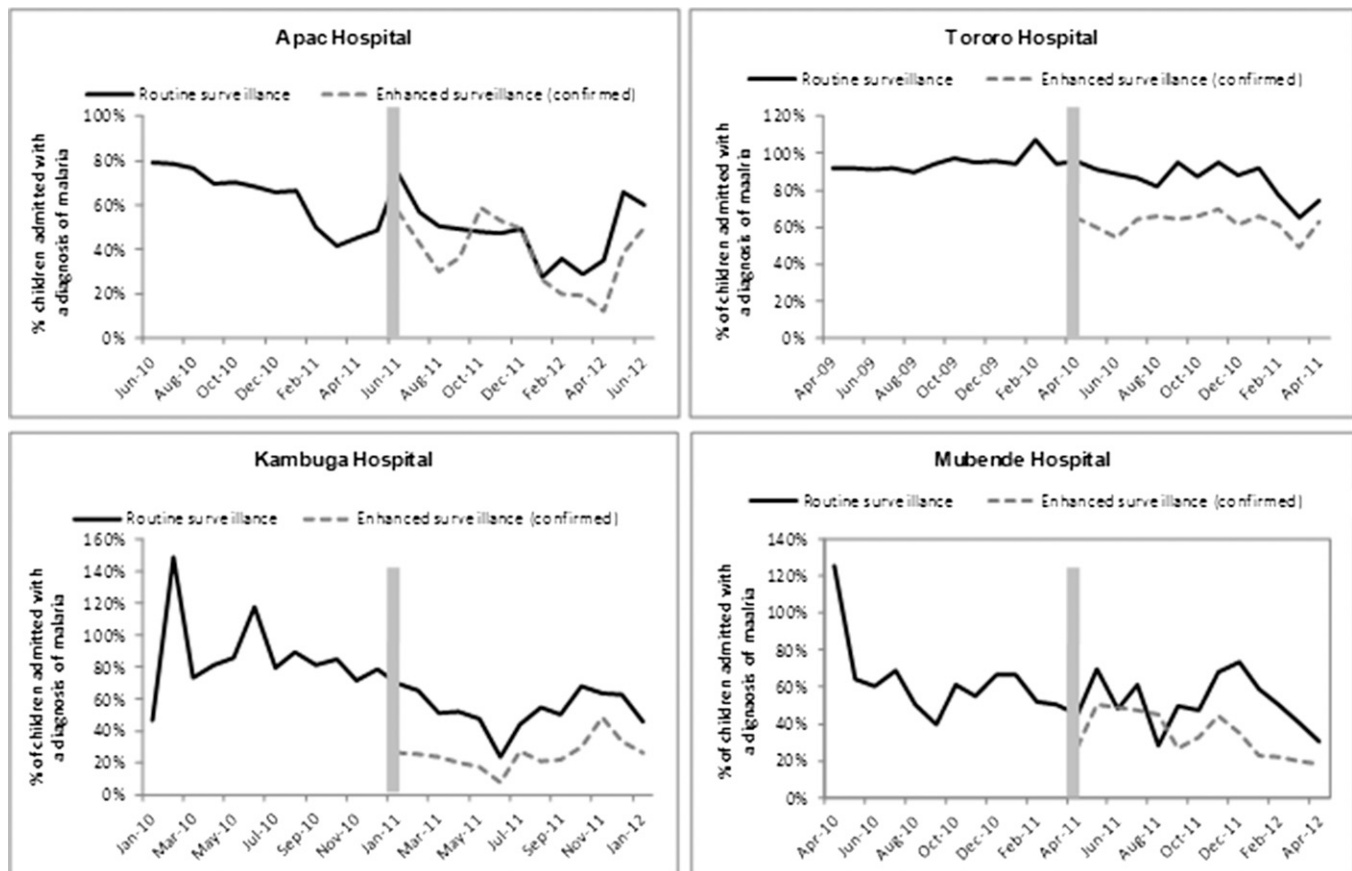


FIGURE 2. Trends in malaria admission rates 12 months before and 12 months after the start of an enhanced malaria surveillance program at four public hospitals in Uganda. Vertical bars represent the month when the enhanced surveillance program started collecting data.

malaria in endemic countries.<sup>11</sup> Second, clinicians lack skills and capacity to confirm alternate diagnosis. Third, health workers continue to believe in the benefits of presumptive diagnosis, even in the setting of negative test results.<sup>12,13</sup> The practice of diagnosing malaria without laboratory confirmation coupled with the non-specific nature of this diagnosis have resulted in the HMIS reporting cases that were not actually malaria, which may consistently overreport the true burden of malaria.<sup>14,15</sup>

As a result, evaluating the impact of interventions using the HMIS data is likely to be problematic.<sup>16–18</sup> For example, as malaria diagnostics are scaled up in Uganda, decreases in the number of malaria cases reported by the HMIS may be misinterpreted as a reduction in the burden of malaria rather than simply improvements in the accuracy of the diagnosis of malaria.<sup>19</sup> Our data suggest that, for the HMIS data to be useful in monitoring malaria trends, there is urgent need to increase the proportion of malaria diagnoses reported based on laboratory confirmation and link the laboratory results to reported malaria cases.<sup>20</sup>

Received May 6, 2014. Accepted for publication September 12, 2014.

Published online November 24, 2014.

**Acknowledgments:** The authors thank the hardworking staff of the four hospitals: Apac, Mubende, Tororo, and Kambuga. We also thank the Uganda Malaria Surveillance data officers (Anthony Ekisa, Mercy Issali, William Wanyi, and Edison Nyionzima) and the medical records assistants (Richard Male, Jimmy Omoko, and Rosette Ninsiima) responsible for collection of Health Management Information System data at respective hospitals.

**Financial support:** This publication was made possible through support provided by the President's Malaria Initiative, US Agency for International Development under the terms of Interagency Agreement 1U51CK000117 with the Centers for Disease Control and Prevention.

**Disclaimer:** The opinions expressed herein are those of the authors and do not necessarily reflect the views of the US Agency for International Development.

**Authors' addresses:** Arthur Mpimbaza, Adoke Yeka, and Moses R. Kanya, College of Health Sciences, Makerere University, Kampala, Uganda, E-mails: arthurwakg@yahoo.com, yadoke@muucsf.org, and kanya@infocom.co.ug. Melody Miles, Gates Foundation, Seattle, WA, E-mail: melody.miles@gatesfoundation.org. Asadu Sserwanga and Ruth Kigozi, Infectious Diseases Research Collaboration, Kampala, Uganda, E-mails: asserwanga@muucsf.org and rkigozi@muucsf.org. Humphrey Wanzira and Denis Rubahika, Uganda National Malaria Control Program, Kampala, Uganda, E-mails: wanzirah@yahoo.co and drubahika@yahoo.com. Sussann Nasr, US President's Malaria Initiative, Malaria Branch, Centers for Diseases Control and Prevention, Luanda, Angola, E-mail: Snasr@usaid.gov. Bryan K. Kapella, US President's Malaria Initiative, Malaria Branch, Centers for Diseases Control and Prevention, Kampala, Uganda, E-mail: bkapella@usaid.gov. Steven S. Yoon and Michelle Chang, US President's Malaria Initiative, Malaria Branch, Centers for Diseases Control and Prevention, Atlanta, GA, E-mails: say7@cdc.gov and aup6@cdc.gov. Sarah G. Staedke, London School of Hygiene and Tropical Medicine, Kampala, Uganda, E-mail: sarah.staedke@lshtm.ac.uk. Grant Dorsey, University of California, San Francisco, CA, E-mail: gdorsey@medsfgh.ucsf.edu.

## REFERENCES

1. Yeka A, Gasasira A, Mpimbaza A, Achan J, Nankabirwa J, Nsobyia S, Staedke SG, Donnelly MJ, Wabwire-Mangen F, Talisuna A, Dorsey G, Kanya MR, Rosenthal PJ, 2012. Malaria in Uganda: challenges to control on the long road to

- elimination: I. Epidemiology and current control efforts. *Acta Trop* 121: 184–195.
2. Ministry of Health Uganda, 2011. *Uganda Malaria Programme Performance Review Aide Memoire 2011*. Ministry of Health Uganda.
3. World Health Organization, 2012. *World Malaria Report*. Geneva: World Health Organization.
4. Bhutta ZA, Chopra M, Axelson H, Berman P, Boerma T, Bryce J, Bustreo F, Cavagnero E, Cometto G, Daelmans B, de Francisco A, Fogstad H, Gupta N, Laski L, Lawn J, Maliqi B, Mason E, Pitt C, Requejo J, Starrs A, Victora CG, Wardlaw T, 2010. Countdown to 2015 decade report (2000–10): taking stock of maternal, newborn, and child survival. *Lancet* 375: 2032–2044.
5. Rowe AK, Steketee RW, Arnold F, Wardlaw T, Basu S, Bakyaita N, Lama M, Winston CA, Lynch M, Cibulskis RE, Shibuya K, Ratcliffe AA, Nahlen BL, 2007. Viewpoint: evaluating the impact of malaria control efforts on mortality in sub-Saharan Africa. *Trop Med Int Health* 12: 1524–1539.
6. Sserwanga A, Harris JC, Kigozi R, Menon M, Bukirwa H, Gasasira A, Kakeeto S, Kizito F, Quinto E, Rubahika D, Nasr S, Filler S, Kanya MR, Dorsey G, 2011. Improved malaria case management through the implementation of a health facility-based sentinel site surveillance system in Uganda. *PLoS ONE* 6: e16316.
7. Batwala V, Magnussen P, Nuwaha F, 2011. Comparative feasibility of implementing rapid diagnostic test and microscopy for parasitological diagnosis of malaria in Uganda. *Malar J* 10: 373.
8. Unites States Agency International Development, Centres for Disease Control, President's Malaria Initiative, 2014. *Uganda Malaria Operational Plan FY 13*. Available at: [http://www.pmi.gov/countries/mops/fy13/uganda\\_mop\\_fy13.pdf](http://www.pmi.gov/countries/mops/fy13/uganda_mop_fy13.pdf). Accessed February 11, 2014.
9. Reyburn H, Mwakasungula E, Chonya S, Mtei F, Bygbjerg I, Poulsen A, Olomi R, 2008. Clinical assessment and treatment in paediatric wards in the north-east of the United Republic of Tanzania. *Bull World Health Organ* 86: 132–139.
10. Chilundo B, Sundby J, Aanestad M, 2004. Analysing the quality of routine malaria data in Mozambique. *Malar J* 3: 3.
11. Gove S, 1997. Integrated management of childhood illness by outpatient health workers: technical basis and overview. The WHO Working Group on Guidelines for Integrated Management of the Sick Child. *Bull World Health Organ* 75 (Suppl 1): 7–24.
12. Bell D, Perkins MD, 2008. Making malaria testing relevant: beyond test purchase. *Trans R Soc Trop Med Hyg* 102: 1064–1066.
13. Chandler CI, Jones C, Boniface G, Juma K, Reyburn H, Whitty CJ, 2008. Guidelines and mindlines: why do clinical staff over-diagnose malaria in Tanzania? A qualitative study. *Malar J* 7: 53.
14. Gwer S, Newton CR, Berkley JA, 2007. Over-diagnosis and co-morbidity of severe malaria in African children: a guide for clinicians. *Am J Trop Med Hyg* 77: 6–13.
15. Osei-Kwakye K, Asante KP, Mahama E, Apanga S, Owusu R, Kwara E, Adjei G, Abokyi L, Yeetey E, Dosoo DK, Punguyire D, Owusu-Agyei S, 2013. The benefits or otherwise of managing malaria cases with or without laboratory diagnosis: the experience in a district hospital in Ghana. *PLoS ONE* 8: e58107.
16. Kunimitsu A, 2009. The accuracy of clinical malaria case reporting at primary health care facilities in Honiara, Solomon Islands. *Malar J* 8: 80.
17. Perkins MD, Bell DR, 2008. Working without a blindfold: the critical role of diagnostics in malaria control. *Malar J* 7 (Suppl 1): S5.
18. Hay SI, Okiro EA, Gething PW, Patil AP, Tatem AJ, Guerra CA, Snow RW, 2010. Estimating the global clinical burden of *Plasmodium falciparum* malaria in 2007. *PLoS Med* 7: e1000290.
19. Rowe AK, Kachur SP, Yoon SS, Lynch M, Slutsker L, Steketee RW, 2009. Caution is required when using health facility-based data to evaluate the health impact of malaria control efforts in Africa. *Malar J* 8: 209.
20. Mueller I, Slutsker L, Tanner M, 2011. Estimating the burden of malaria: the need for improved surveillance. *PLoS Med* 8: e1001144.