

LONDON
SCHOOL of
HYGIENE
& TROPICAL
MEDICINE



Lawn, JE; Kinney, MV; Belizan, JM; Mason, E; McDougall, L; Larson, J; Lackritz, E; Friberg, IK; Howson, CP; the Born Too Soon Preterm Birth Action Group (see acknowledgements, (2013) Born Too Soon: Accelerating actions for prevention and care of 15 million newborns born too soon. *Reproductive health*, 10 (Suppl). S6. ISSN 1742-4755 DOI: <https://doi.org/10.1186/1742-4755-10-S1-S6>

Downloaded from: <http://researchonline.lshtm.ac.uk/1621700/>

DOI: [10.1186/1742-4755-10-S1-S6](https://doi.org/10.1186/1742-4755-10-S1-S6)

Usage Guidelines

Please refer to usage guidelines at <http://researchonline.lshtm.ac.uk/policies.html> or alternatively contact researchonline@lshtm.ac.uk.

Available under license: <http://creativecommons.org/licenses/by/2.5/>

REVIEW

Open Access

Born Too Soon: Accelerating actions for prevention and care of 15 million newborns born too soon

Joy E Lawn^{1,2*}, Mary V Kinney³, José M Belizan⁴, Elizabeth Mary Mason⁵, Lori McDougall⁶, Jim Larson⁷, Eve Lackritz⁸, Ingrid K Friberg⁹ and Christopher P Howson¹⁰, On behalf of the *Born Too Soon* Preterm Birth Action Group (see acknowledgement for full list)

Abstract

Preterm birth complication is the leading cause of neonatal death resulting in over one million deaths each year of the 15 million babies born preterm. To accelerate change, we provide an overview of the comprehensive strategy required, the tools available for context-specific health system implementation now, and the priorities for research and innovation. There is an urgent need for action on a dual track: (1) through strategic research to advance the prevention of preterm birth and (2) improved implementation and innovation for care of the premature neonate. We highlight evidence-based interventions along the continuum of care, noting gaps in coverage, quality, equity and implications for integration and scale up. Improved metrics are critical for both burden and tracking programmatic change. Linked to the United Nation's *Every Woman Every Child* strategy, a target was set for 50% reduction in preterm deaths by 2025. Three analyses informed this target: historical change in high income countries, recent progress in best performing countries, and modelling of mortality reduction with high coverage of existing interventions. If universal coverage of selected interventions were to be achieved, then 84% or more than 921,000 preterm neonatal deaths could be prevented annually, with antenatal corticosteroids and Kangaroo Mother Care having the highest impact. Everyone has a role to play in reaching this target including government leaders, professionals, private sector, and of course families who are affected the most and whose voices have been critical for change in many of the countries with the most progress.

Declaration This article is part of a supplement jointly funded by Save the Children's Saving Newborn Lives programme through a grant from The Bill & Melinda Gates Foundation and March of Dimes Foundation and published in collaboration with the Partnership for Maternal, Newborn and Child Health and the World Health Organization (WHO). The original article was published in PDF format in the WHO Report "Born Too Soon: the global action report on preterm birth" (ISBN 978 92 4 150343 30), which involved collaboration from more than 50 organizations. The article has been reformatted for journal publication and has undergone peer review according to *Reproductive Health's* standard process for supplements and may feature some variations in content when compared to the original report. This co-publication makes the article available to the community in a full-text format.

Preterm birth as a marker for women's and children's health

The *Born Too Soon* report, published in 2012, drew global attention to the issue of preterm birth and reported that more than 1 in 10 of the world's babies are born too soon each year, 15 million each year [1]. As part of a series entitled "Born Too Soon" drawing from the report, this final paper summarises the problem, underlining the

need for concerted action on both the prevention of preterm birth and care of the premature baby, to ensure every mother and every baby survives [2-6]. We then highlight evidence-based interventions for preterm birth in the context of the wider health system drawing on the other papers in this supplement, and here we focus on the implications for integrating and scaling up those available interventions in low- and middle-income countries where the coverage of care is lowest and the potential lives saved as a result. We also consider research gaps since advancing the research agenda is a critical need to reduce the global burden of preterm birth,

*Correspondence: joylawn@yahoo.co.uk

¹MARCH, London School Hygiene & Tropical Medicine, UK

Full list of author information is available at the end of the article

requiring innovations for both prevention and care. Finally we detail the analyses for a mortality reduction target for preterm specific neonatal deaths and outline the specific roles all actors must play in this global effort to reduce preterm birth and care for premature babies, which is a marker of the health and care of women and girls, as well as of progress for child survival and development.

The actions identified aim to support the goals of the *Global Strategy for Women's and Children's Health* launched by the United Nations (UN) Secretary-General Ban Ki-moon in September 2010 to further advance progress for the Millennium Development Goal 4 for child survival and the *Every Woman Every Child* movement to mobilise action and resources for these goals [7]. By pooling our efforts with each organisation playing to its strengths, our shared goal, as epitomised in *Every Woman Every Child*, can be realised — a day when pregnancies are wanted and safe, women survive, babies everywhere get a healthy start in life, and children thrive.

Accelerating evidence-based action for prevention and care

Addressing the burden of preterm birth has a dual track—prevention and care (Figure 1). Reducing risks before, during, and between pregnancies through preconception and antenatal care packages may help preterm birth prevention [4,5]. Actions taken during labour and birth, and particularly improved care of the neonate have been shown to have major impact [5, 6]. For example, antenatal corticosteroids administered to a pregnant woman in preterm labour can prevent respiratory distress syndrome in premature babies reducing newborn mortality and morbidity [5]. In addition, many of these interventions, such as obstetric care and antibiotics for prelabour premature rupture of membranes (pPROM), also benefit maternal health and prevent stillbirths [8]. Interventions that have been identified through global reviews of the evidence are summarised elsewhere [4-6] and shown in Figure 1.

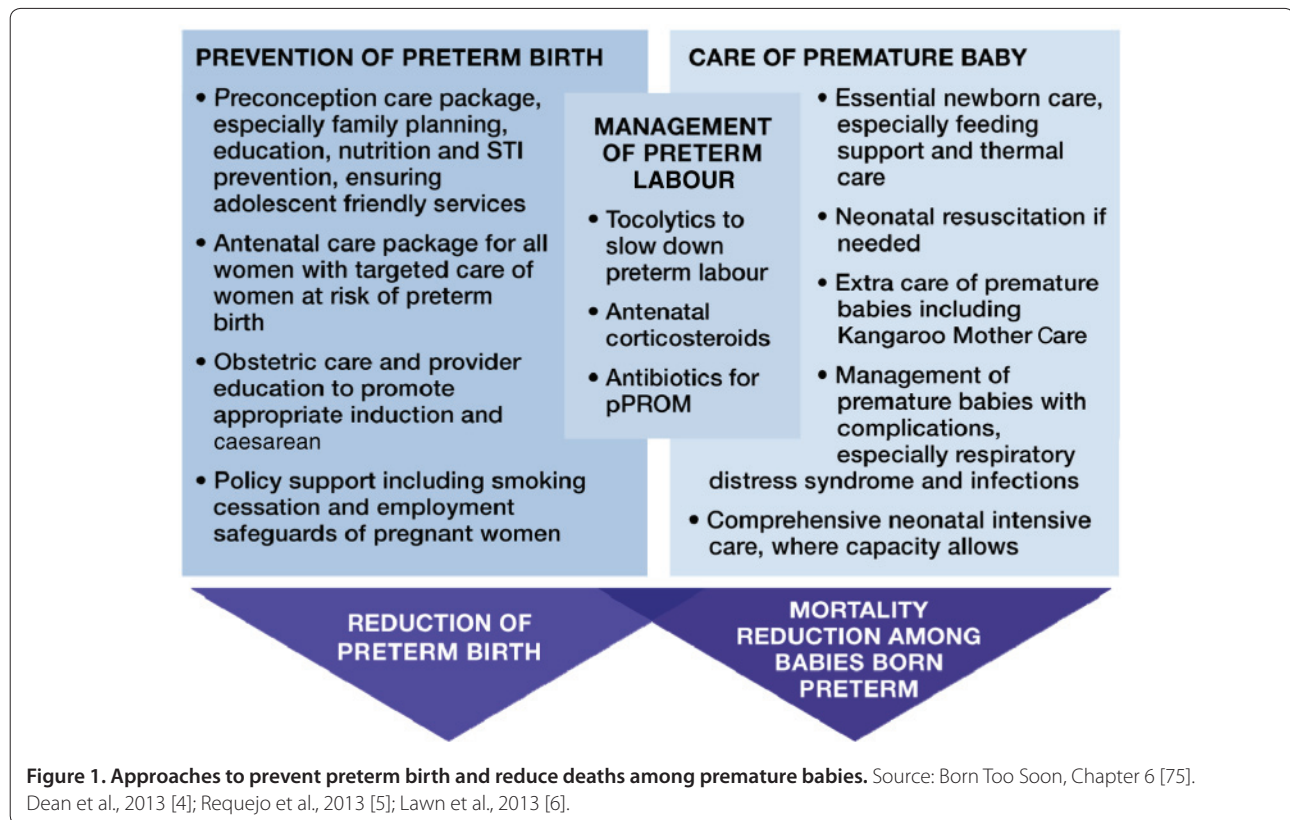
Prevention of preterm birth is primarily a knowledge gap

Despite the burden of preterm birth, few effective prevention strategies are available for clinicians, policy-makers and program managers. Multiple studies in high-income contexts have attempted to prevent preterm birth, but have not yet identified high-impact interventions in the preconception and antenatal periods. Many interventions have been evaluated, and some have been identified as beneficial though limited in public health impact, such as therapy with progestational agents, which have only been studied in certain high-risk populations. Preliminary studies of interventions to reduce rates of elective caesarean births or inductions without medical

indication before the recommended 39 completed weeks of gestation suggest an impact on prevention of early term deliveries in some high- and middle-income countries [9,10]. A recent study published in *The Lancet* examined preterm birth prevention potential in 39 high-income countries and estimated that if five interventions reached high coverage there would only be a 5% relative reduction of preterm birth rate from 9.59% to 9.07% of livebirths by 2015, averting an estimated 58,000 preterm births and saving US\$3 billion annually [11]. These five interventions were: smoking cessation (0.01 rate reduction), decreasing multiple embryo transfers during assisted reproductive technologies (0.06), cervical cerclage (0.15), use of progesterone agents (0.01), and reduction of elective labour induction or caesarean delivery without medical indication (0.29). The limited number and effectiveness of available interventions for preterm prevention further underscores this critical major knowledge gap, and makes the case for a strategic and coordinated research effort to advance understanding of causes and mechanisms of preterm birth and identification of innovative solutions.

However, the low- and middle-income countries with the highest burden of preterm births also carry the greatest burden of higher-risk conditions for preterm birth that are preventable or treatable. Interventions such as family planning; prevention and management of sexually transmitted infections (STIs); use of insecticide-treated bednets and intermittent preventive treatment for malaria; identification and treatment of pre-eclampsia, and reduction of physical workload are examples of strategies that could improve birth outcomes in low- and middle-income settings. Unfortunately, to date, few studies have assessed the impact of these interventions on preterm birth in these countries, particularly with accurate measures of gestational age [12]. The greatest potential for the global prevention of preterm birth, therefore, lies in a comprehensive, strategic, and sufficiently-funded research agenda of the causes of preterm birth and novel strategies for prevention [13]. This should be vigorously pursued.

There are some significant intrapartum interventions that reduce the impact of preterm birth. Antenatal corticosteroid injections given to women in preterm labour are highly effective at preventing respiratory distress syndrome in premature babies and associated mortality and long-term impairment, but remain under-used in many low- and some middle-income countries. There is, thus, a need for delivery research that can help understand context-specific reasons for the continued low coverage in these countries and identify ways to adapt known effective strategies for use in low-resource settings [14]. Tocolytic medicines rarely stop preterm labour, but may help delay labour for hours or days,



allowing the baby additional precious time to develop before birth. Of course, any strategies to prolong labour, including delaying caesarean birth, must be evaluated against the potential risk of continued exposure of woman and foetus to sub-optimal conditions that may result in harmful effects. Further research is needed on short and long-term health consequences for mother and baby from efforts to prevent preterm labour [5].

Care of premature babies is primarily an action gap

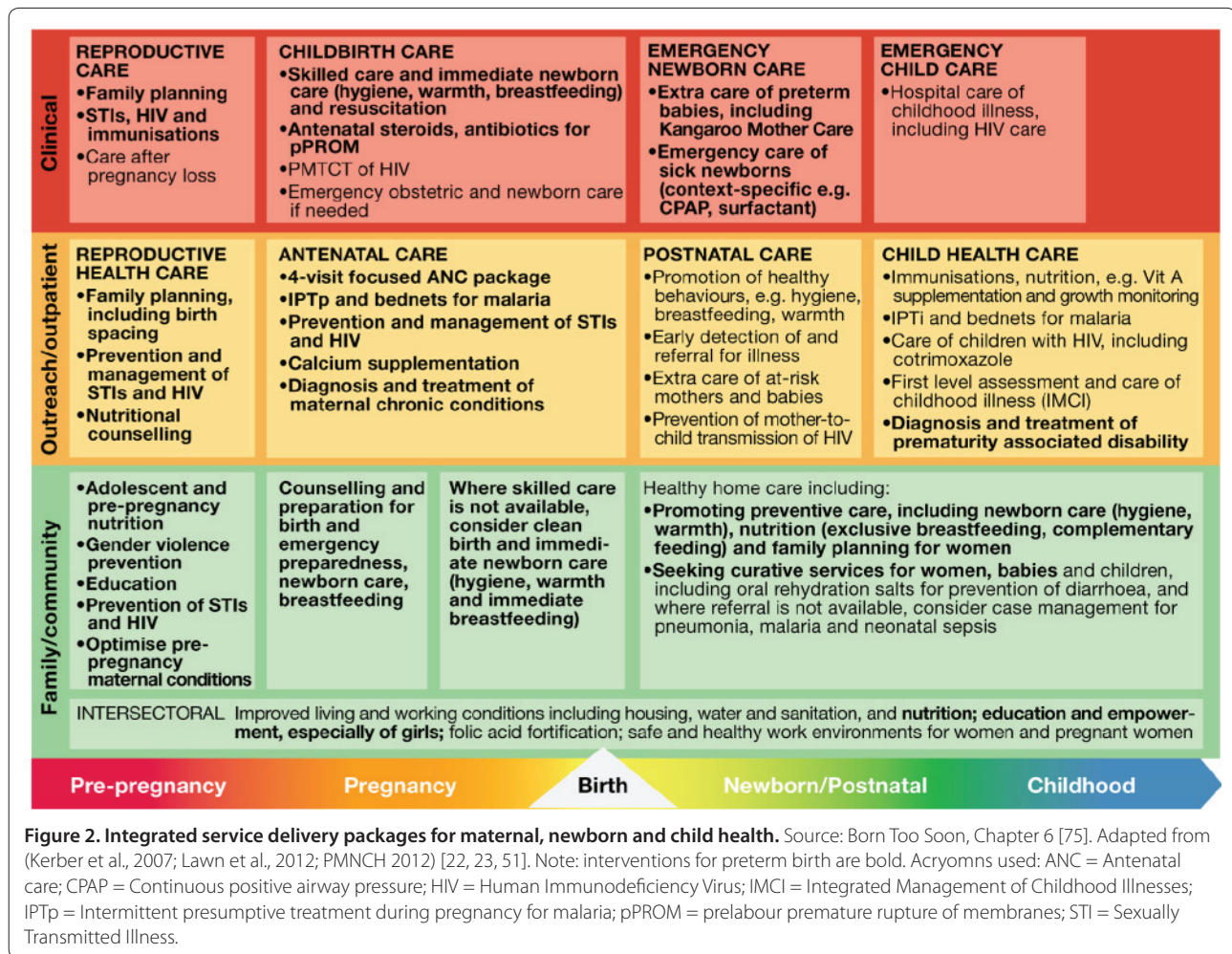
As evidenced by the large survival gap between babies born in high-income countries and those born in low- and middle-income countries, effective interventions exist to reduce death and disability in premature babies, yet this care does not reach the poor and most disadvantaged populations where the burden is highest [6]. There is a “know-do gap”, or a gap between what is known to work and what is done in practice. Bridging this gap will be critical for saving premature babies globally, and must be linked to implementation research and context specific adaptation and innovation.

More than 60% of all premature babies are born in South Asia and sub-Saharan Africa which have the highest preterm birth rates [15] and half of births are currently in facilities. Most preterm births occur over 32 weeks of gestation (84%), and deaths in these babies can almost all be prevented and in most cases, intensive care

is not needed [6] (Figure 1). It is possible to implement some evidence-based interventions for the care of premature babies at the community level through behaviour change initiatives and women’s groups [16], as well as home-visit packages with extra care for premature babies, particularly breastfeeding support and awareness of the importance of seeking care when danger signs occur [17]. In a few countries, case management of neonatal sepsis is being scaled up using community-based health workers [18]. However, the highest impact interventions, notably access to quality intrapartum care and emergency obstetric and newborn care [19], require facility-based services. Antenatal corticosteroids and Kangaroo Mother Care (KMC) are evidence-based interventions that are feasible to scale up in low-resource settings and may serve as entry points for strengthening health systems [20,21].

Scaling up preterm birth interventions within the existing health system

There is increasing global consensus around essential reproductive, maternal, newborn and child health (RMNCH) interventions [22,23], including those to address preterm birth (Figure 2). The goal is to achieve universal, equitable coverage and high quality in all these RMNCH interventions. Newborn babies, and especially premature newborns, are the most sensitive test of health



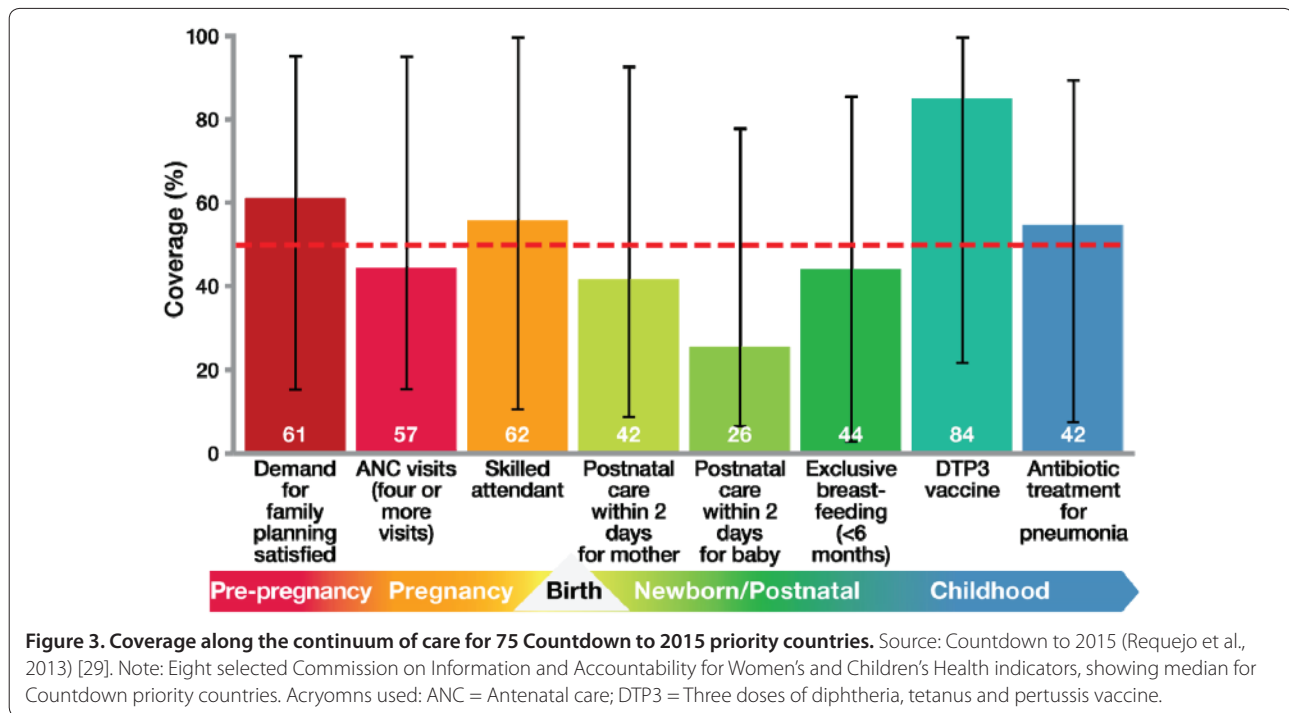
systems function as these babies can die within minutes without the right care. For sustainable effect, interventions to prevent preterm birth in the preconception and antenatal periods and to reduce death and disability in premature babies must be integrated within the existing health system.

The continuum of care is a core organising principle for health systems emphasising linkages between healthcare packages across time and through various service delivery strategies [2]. An effective continuum of care addresses the health needs of the adolescent, woman, mother, newborn and child throughout the life cycle, wherever care is provided, whether it be at the home, primary care level or district and regional hospitals. Integrated service delivery packages of evidence-based interventions within the continuum of care have many advantages: cost-effectiveness is enhanced; available human resources are maximised; and services are more family-friendly, reducing the need for multiple visits [24]. Most importantly, they can help prevent stillbirths, improve prevention and care of premature babies and

avert death and disability in women, newborns and children [25-27].

Interventions with the highest impact on the prevention of preterm birth and care of the premature baby in high-mortality and lower-resource settings can be integrated into these health service delivery packages, which exist in most health systems and involve links with maternal and child health services, as well as immunisation, malaria, HIV/AIDS, nutrition, family planning, and other related programs [22]. A schematic matrix of the basic health packages (Figure 2) outlines these packages spanning the continuum of care and through various service delivery modes within the health system, highlighting the interventions included to address preterm birth. The interventions within each package are based on multiple systematic reviews and are consistent with the Partnership for Maternal, Newborn and Child Health Essential Interventions report [23].

While these packages may exist in nearly all health systems, lower-income countries cannot scale up and implement all the individual RMNCH interventions



within all the packages at once [25]. Packages usually are initially comprised of the essential interventions and then increase in complexity over time according to local needs and capacity. For example, the Antenatal Care package may start as the WHO focused four visit package and then later add on diabetes screening and routine ultrasound as the system capacity and funding increases [26]. The functionality of health systems, such as human resource capacity, health facility infrastructure, supply and demand systems, financial resources, government stewardship, district-level management and use of data, will also determine the coverage, quality and rate of change within the continuum of care [28].

Closing gaps in coverage, equity and quality

In order for health services to save the maximum number of lives, coverage, quality and equity need to be high; thus ensuring high coverage of care means reaching every woman, mother-to-be, mother, newborn, child and family with targeted interventions. Providing quality care involves doing the right thing at the right time. Providing equitable care means ensuring care for all according to need, rather than income, gender or other social grouping. This holds true for the existing inequalities in care within and across high-income as well as low- and middle-income countries. Previous papers in this supplement have identified gaps in coverage, quality, equity and metrics for care during preconception, pregnancy and care of preterm newborns [4-6].

Current coverage levels for eight indicators across the continuum of care, chosen by the United Nations Commission on Information and Accountability for Women's and Children's Health, are tracked for the 75 priority Countdown to 2015 countries which collectively account for 90% of maternal, newborn and child deaths [29]. Currently, essential care reaches only half of the people in need (Figure 3), and there is a wide variation in coverage levels among countries, with some countries achieving nearly universal coverage and others reaching less than a quarter of the population. Demand for family planning satisfied and antenatal care coverage, even though feasible through primary care services, still leave out many women, especially the poorest. In addition, quality gaps are a missed opportunity for reaching families; for example, when a midwife is present at birth but is not equipped to prevent post partum haemorrhage or to resuscitate a baby who does not breathe [5,6]. Substantial progress is still needed for the reduction of maternal and newborn deaths, especially for effective, high quality at the vital contact times (e.g., skilled attendant at birth and postnatal care) [29]. Currently, there are no routine data available for many of the interventions for preterm birth prevention and care.

A research pipeline to address preterm birth

Greater investment in research and, in particular, into discovery of the many complex and interrelated factors causing preterm birth is needed to strengthen prevention

Table 1. A research pipeline advancing knowledge to address preterm birth

	Description Characterise the problem	Discovery Understand the problem	Development Create and develop new interventions	Delivery Advance equitable access to interventions
Research aim	Descriptive epidemiology to understand determinants, advance definitions	Development of new interventions or adapting or improving existing interventions	Development of new interventions or adapting or improving existing interventions	Delivery of interventions at scale through innovative approaches
Preterm prevention research themes	<ul style="list-style-type: none"> • Improve collection, analysis, interpretation, application of epidemiological data for: <ul style="list-style-type: none"> » Refining, disseminating standard definitions of exposures, outcomes and phenotypes » Further understanding of risk factors for preterm birth » Monitoring and evaluating impact of interventions » Improving the estimates and data collection systems 	<ul style="list-style-type: none"> • Increase knowledge of the biology of normal and abnormal pregnancy • Better understand modifiable mechanisms contributing to preterm birth (e.g., preconceptional or antenatal nutrition, infection and immune response) • Advance understanding of underlying pathophysiology of preterm newborns and impact of co-morbidities on outcomes in different country settings 	<ul style="list-style-type: none"> • Create, develop new interventions (e.g., novel approaches to preventing preterm birth) • Adapt existing interventions to increase effect, reduce cost, or expand utilisation and access 	<ul style="list-style-type: none"> • Evaluate impact, cost and process of known interventions to reduce preterm birth (e.g., family planning, STI management, malaria prevention) • Social behaviour change research to address lifestyle factors and other risks for preterm birth • Effective approaches to increase use of antenatal steroids in low- and middle-income settings
Premature baby care research themes			<ul style="list-style-type: none"> • Create new devices and drugs for preterm babies that are feasible to use in low-income settings • Adapt existing interventions to increase effect, reduce cost, and/or improve deliverability in challenging settings or at community level (e.g., robust, simpler technologies) 	<ul style="list-style-type: none"> • Implementation research to adapt and scale up context-specific packages of care for preterm babies (e.g., examining task shifting, innovative commodities, etc.) • Create and implement effective community-based approaches (e.g., community health workers home visit packages, women's groups)
Typical timeline to impact	Near-term to Long-term (2 to 15 years)	Long-term (5 to 15 years)	Medium-term (5 to 10 years)	Near-term (2 to 5 years)

Source: Born Too Soon, Chapter 6 [75]. Adapted from Lawn et al., 2008; Rubens et al., 2010.

and offers a potential over the longer term for significant reductions in mortality, childhood disability and health-care expenditure. For care of preterm babies, the emphasis is on rapidly scaling up implementations, so that the maximum number of preterm babies and their mothers benefit. Implementation research is needed to understand the most efficient means of scaling up evidenced based solutions. In this way, hundreds of thousands of lives could be saved with the application of current knowledge.

Preterm birth is not a single condition, but a single outcome (birth before 37 completed weeks) due to multiple causes. Hence, there will not be a single solution, but rather an array of solutions that address the various biological, clinical, behavioural and social risk factors that result in preterm birth. This supplement identifies risks for preterm birth and the solutions needed to reduce those risks across the RMNCH continuum; yet for

many of these risks, we do not have effective solutions. Important research priorities have been highlighted [4-6]. A strategic research approach is needed to understand why babies are born preterm or as stillbirths, how to identify women at risk, to test strategies for prevention and care, and reduce death and disability rates for preterm neonates.

Important research themes can be summarised across the research pipeline of description, discovery, development and delivery science, showing the dual agenda of preventing preterm birth and addressing the care and survival gap for babies born preterm (Table 1) [30]. For the preterm prevention research agenda, the greatest emphasis is on discovery and descriptive research, which is a longer-term investment. For the premature baby care agenda, the greatest emphasis is on development and delivery research, with a shorter timeline to impact at scale.

Descriptive research

Improved and consistently applied epidemiologic definitions and methods, with clearly defined preterm phenotypes, are the foundation for improved understanding of the burden of preterm birth [31, 32] and addressing the multiple and often interrelated causes of preterm birth. Simpler and lower-cost methods for measuring gestational age are particularly needed in low- and middle-income countries where the burden of preterm birth is highest. Social and racial disparities in preterm birth rates are a major issue, yet remain poorly understood. Another important need is for standardised methods for diagnosing and treating prematurity-related impairment in childhood and more consistent measures and timing for assessing multi-domain impairments [33,34].

Discovery research

Discovery research focuses on better understanding the causes and mechanisms of preterm birth and elucidating factors that regulate uterine quiescence, initiation of labour, and the multiple host, agent, and environmental factors that cause aberrations in these normal processes of pregnancy. Understanding the reasons for racial and ethnic disparities in preterm birth will advance the field of pregnancy health broadly, as well as accelerate solutions for those populations most in need. A multi-disciplinary approach is needed to identify women at risk and discover new strategies for prevention including potential biomarkers, such as genomic, microbial, immunologic, and hormonal factors.

Although infectious and inflammatory processes contribute to a high proportion of early spontaneous preterm births [35], antibiotic treatment of reproductive tract infections, especially bacterial vaginosis and other remote site infections, has generally failed to reduce preterm risk [36]. Many pre-existing chronic conditions and medical complications of pregnancy may result in increased risk of preterm delivery, such as pre-eclampsia, hypertension, aberrations in placentation and placental growth, diabetes and infectious diseases. Identifying mechanisms of these conditions, and strategies for early detection, prevention, and care, represent an important need for reducing the global burden of preterm birth. New strategies for prevention are particularly urgent for use in low- and middle-income settings where rates are highest.

Development research

Equipment and commodities are considered essential for neonatal care units in high-income countries, yet for many such units in low-income settings, basic equipment and essential medicines are not available or functional. Development of robust, fit-for-purpose equipment, is a critical next frontier for referral care for premature babies

in the settings where most die, especially for care in hospitals [6]. Some examples include technologies for ventilatory support, novel surfactant formulations, safe and effective intravenous fluid and drug administration, devices for testing bilirubin levels for jaundice and innovative phototherapy equipment [6]. New and effective methods for monitoring and management of maternal complications and preterm labour could make a major contribution. Commodities, such as antenatal corticosteroids, could reach more women and babies through innovation for example in single-dose syringes or, ideally, needle-free devices [37].

Delivery research

Delivery or implementation research addresses how interventions can be best implemented, especially in resource-constrained settings where coverage inequalities are more pronounced so that all families are reached with effective care. Implementation research and program evaluation evaluates how best to achieve wide scale coverage of interventions, including prevention particularly family planning and such as care of women with infectious diseases such as malaria, HIV and STIs; improved nutrition; smoking cessation; and reducing maternal workload. In many high-income countries and those with emerging economies, there is evidence of an increase in late preterm deliveries due to elective inductions and caesareans without clear medical indication [38]. More information is urgently needed from both providers and patients on the reasons for these shifts in clinical practice and how to promote more conservative obstetric management.

The vast majority of published studies on neonatal care relate to high-technology care in high-income settings [39]. Implementation research from low- and middle-income settings is critical to inform and accelerate the scale up of high-impact care, such as KMC and neonatal resuscitation [19,21,40]. Evaluation of context-specific neonatal care packages regarding outcome, cost and economic results is important, including adaptations such as task shifting to various cadres and use of innovative technologies [41]. There is also a need to understand how to screen more effectively for and treat possible prematurity-related cognitive, motor and behavioural disabilities, including in older children. In addition, the economics of preterm birth prevention and care, including the cost-benefit and cost-effectiveness of interventions delivered singly or as a package across the continuum of care and in different settings and populations as well as the costs of doing nothing, need to be better studied [12,42].

Building the platform to accelerate research

Underlying this entire research agenda is the development and implementation of the capacity to advance the

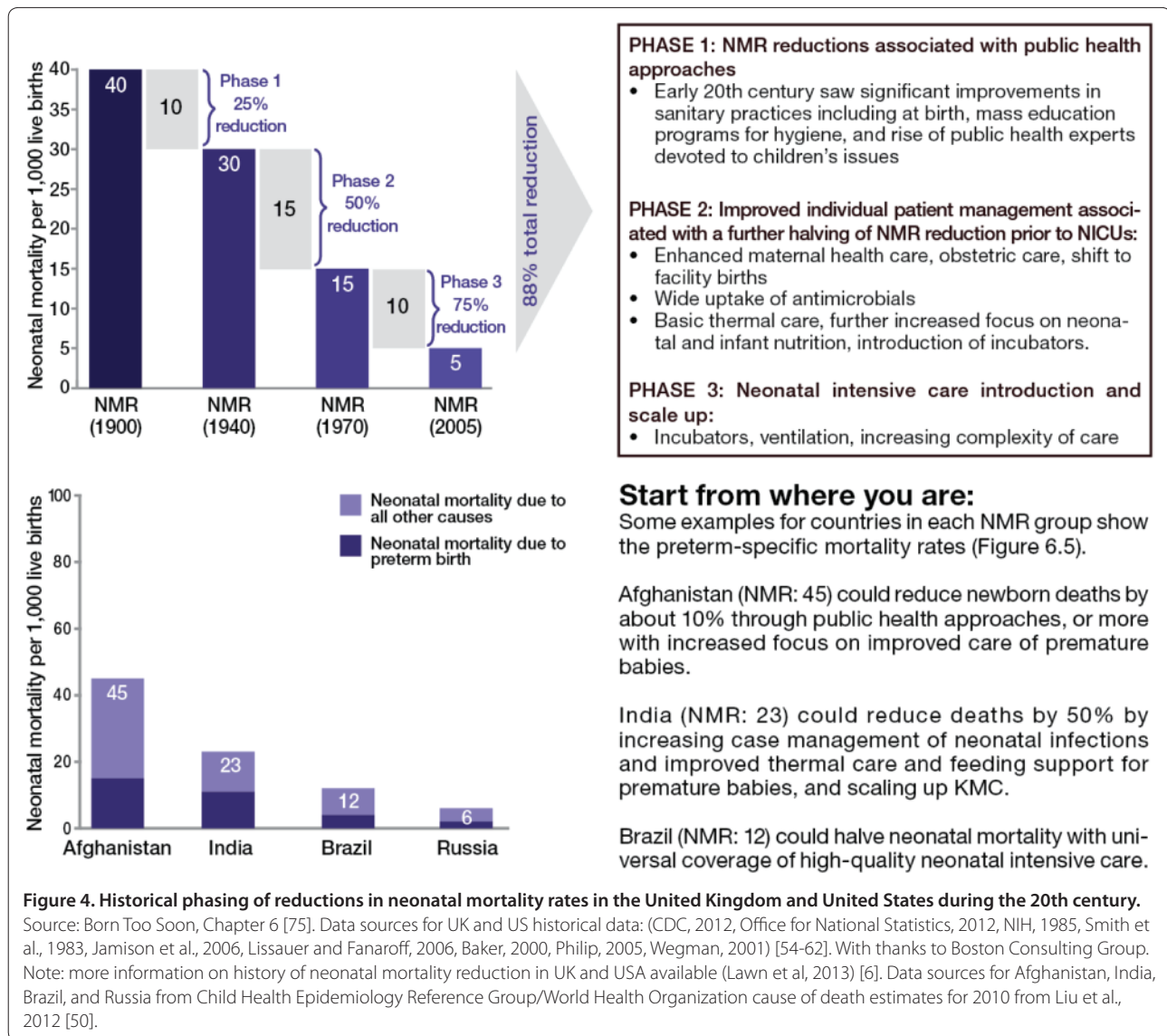


Figure 4. Historical phasing of reductions in neonatal mortality rates in the United Kingdom and United States during the 20th century.
 Source: Born Too Soon, Chapter 6 [75]. Data sources for UK and US historical data: (CDC, 2012, Office for National Statistics, 2012, NIH, 1985, Smith et al., 1983, Jamison et al., 2006, Lissauer and Fanaroff, 2006, Baker, 2000, Philip, 2005, Wegman, 2001) [54-62]. With thanks to Boston Consulting Group. Note: more information on history of neonatal mortality reduction in UK and USA available (Lawn et al, 2013) [6]. Data sources for Afghanistan, India, Brazil, and Russia from Child Health Epidemiology Reference Group/World Health Organization cause of death estimates for 2010 from Liu et al., 2012 [50].

science of prevention of preterm birth, manage preterm labour and improve care of premature babies. Standard case definitions of the types and causes of preterm birth are being developed [31,32] and will be critical to accelerating discovery and making comparisons across studies from basic science to clinical trials and program evaluation. Multi-country studies in middle- and low-income countries tracking pregnant women with improved and accurate gestational dating may help contribute to improved pregnancy monitoring and a better understanding of all pregnancy outcomes for women, stillbirths and newborns. Improved communication and collaboration among researchers investigating these linked outcomes will provide an opportunity to accelerate the discovery, development and delivery of innovation,

especially across disciplines and between laboratory benches and remote and under-resourced hospitals. Expanding training, research opportunities and mentorship for researchers in low-income settings hold great promise in developing a pipeline of expertise to advance the science with the skills to use this science effectively to promote change [30].

Potential for lives saved

To understand the impact of evidence-based interventions on deaths due to complications of preterm birth, we considered analyses including historical data from high income countries (Figure 4), recent change in middle income countries (Figures 5 and 6) and a new analysis using lives saved modelling.

Several low- and middle-income countries have demonstrated a 50% reduction in preterm-specific neonatal deaths in low- or middle-resource settings (Figure 6). Two of these countries — Sri Lanka and Turkey — are briefly described here. Differences between approaches are immediately apparent, as countries customise their approach to availability of resources and health systems context.

TURKEY

Turkey, an upper middle-income country, has made significant progress in health care over the past decade. Health system transformation was comprehensive, but maternal and neonatal health policies in particular played a central role. As a result, the neonatal mortality rate dropped from 21 per 1,000 live births in 2000 to 10 per 1,000 live births in 2010 [63]. Births with a skilled attendant rose from 83% in 2003 to more than 90% in 2009, and institutional facility births rose to more than 90% by 2009 [64]. In fact, Turkey achieved in a decade what took 30 years in the OECD countries.

Part of Turkey's success was through the implementation of demand and supply strategies. There was significant promotion of antenatal care and facility births, including cash incentives and free accommodation in maternity waiting homes in cities for expectant women from remote areas [65]. In addition, wider public health approaches were an important foundation, such as focused elimination of maternal and neonatal tetanus, breastfeeding promotion and UNICEF "baby-friendly" hospitals campaigns. Turkey invested in health systems improvements, such as systematizing referral to neonatal care with transport systems, and upgrading neonatal intensive care units, focusing on nursing staff skills and standardization of care, especially for neonatal resuscitation [66].

SRI LANKA

Sri Lanka, a lower middle-income country, has benefited from reduction in NMR as a result of policies and gradual improvements in health care that have been continually implemented over the past five decades. Despite relatively low per capita income, Sri Lanka has achieved impressive results and has often been cited as an example of success for reduction of maternal mortality through a primary health care approach [67].

Many of these advances have come due to Sri Lanka's investment in primary care initiatives, as well as provision of free health care at government facilities. Antenatal care coverage is at 99% for the country, with approximately 51% of pregnant woman having more than 9 antenatal visits. Skilled birth attendance at delivery is universal (99%). Postnatal care is also robust, with 90% of women receiving public health midwife visits within 10 days of discharge [68, 69].

From an NMR of 80 per 1,000 live births in 1945, Sri Lanka progressed steadily to 22 per 1,000 live births by 1980, and now to around 10 per 1,000 live births [63, 69]. More recent advances included reinvigoration of community-based health care, including maternity clinics, and strengthening of referral and transportation networks, such that women in preterm labour are rapidly transported to appropriate secondary and tertiary care centres. A recent focus has been additional investment in tertiary care centres equipped for neonatal intensive care, training of specialists and investment in more complex technologies (personal communication, Prof. D.G. Harendra de Silva).

Figure 5. Countries that have halved their deaths due to preterm birth in just one decade.

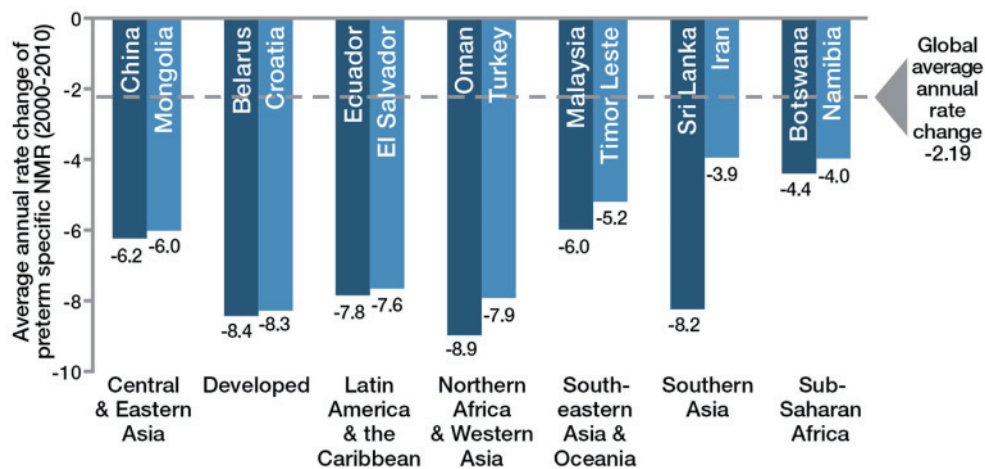


Figure 6. Well-performing countries for preterm-specific neonatal mortality reduction by region. Source: Born Too Soon, Chapter 6 [75]. Analysis conducted using data from Liu et al., 2012 [50]. Credit: Boston Consulting Group with the Global Preterm Birth Mortality Reduction Analysis Group.

Table 2: Estimated lives saved of premature babies in settings with universal coverage of interventions

Intervention reaching 95% coverage	Also saves mothers or other babies	By 2015		By 2025	
		% Deaths averted	Lives saved	% Deaths averted	Lives saved
Family planning*	M, SB, N	24	228,000	32	345,000
Antenatal corticosteroids	N	40	373,000	41	444,000
Antibiotics for pPRoM	N	9	85,000	9	101,000
Immediate assessment and simple care of all babies	N	5	44,000	5	53,000
Neonatal resuscitation	N	7	65,000	7	77,000
Thermal care	N	15	142,000	16	171,000
Kangaroo mother care	N	48	452,000	48	531,000
Interventions implemented together	M, SB, N	81	757,000	84	921,000

Note: interventions marked with M will also save maternal lives, SB would avert stillbirth, and N will save newborns dying from causes other than preterm birth.

* Family planning scaled to 60% coverage or to a level whereby the total fertility rate is 2.5.

Note that obstetric care would also have an impact, but is not estimated separately

History lessons from neonatal mortality reduction in high income countries

The historical data from the United States and United Kingdom (Figure 4) shows that a moderate increase in coverage of selected interventions results in a mortality reduction, even in the absence of neonatal intensive care. A number of lessons can be drawn from this historical data:

Basic care and infection case management interventions have an effect on neonatal deaths and on deaths amongst moderate and late preterm births, which account for over 80% of preterm births.

More targeted care is necessary for reducing deaths among babies 28 to <32 weeks and this reduction could be accelerated as higher-impact interventions are now known, such as antenatal corticosteroids, surfactant, KMC and other enhanced methods of infant warming and feeding which were not available in the mid-20th century in the United States and United Kingdom.

Intensive care may be necessary to reduce deaths among extremely premature babies (< 28 weeks), who account for 5% of all premature babies though a larger proportion of deaths.

Lives saved modelling for preterm mortality reduction

A Lives Saved Tool (*LiST*) analysis examining projected lives saved with interventions for preterm birth was conducted for 75 Countdown to 2015 priority countries (These countries are: Afghanistan, Angola, Azerbaijan, Bangladesh, Benin, Bolivia, Botswana, Brazil, Burkina Faso, Burundi, Cambodia, Cameroon, Central African Republic, Chad, China, Comoros, Congo, Democratic Republic of the Congo, Côte d'Ivoire, Djibouti, Egypt, Equatorial Guinea, Eritrea, Ethiopia, Gabon, The Gambia, Ghana, Guatemala, Guinea, Guinea-Bissau, Haiti, India, Indonesia, Iraq, Kenya, Democratic Republic

of Korea, Kyrgyz Republic, Lao People's Democratic Republic, Lesotho, Liberia, Madagascar, Malawi, Mali, Mauritania, Mexico, Morocco, Mozambique, Myanmar, Nepal, Niger, Nigeria, Pakistan, Papua New Guinea, Peru, Philippines, Rwanda, Sao Tome and Principe, Senegal, Sierra Leone, Solomon Islands, Somalia, South Africa, South Sudan, Sudan, Swaziland, Tajikistan, United Republic of Tanzania, Togo, Turkmenistan, Uganda, Uzbekistan, Vietnam, Yemen, Zambia, and Zimbabwe.). *LiST* is a free and widely used module in a demographic software package called Spectrum, which allows the user to compare the effects of different interventions on the numbers of maternal, neonatal and child deaths and stillbirths, as well as stunting and wasting [43]. The modelling methods have been widely published including discussions of the limitations, which are particularly related to the lack of coverage data for many of the specific interventions [44-47].

Table 2 shows the interventions included in the *LiST* analysis that prevent preterm births and improve survival of premature babies. We considered the period from 2010 to 2015 and then through 2025 to allow for a more feasible time frame to scale up care and progress on the prevention agenda. The results of the *LiST* analysis found that 84% of premature babies (more than 921,000 lives) could be saved in 2025 if these interventions were made universally available (95%). Full coverage of antenatal corticosteroids alone resulted in high mortality reductions, a 41% decrease from 2010 [20]. Implementing KMC alone also suggests that a high reduction of deaths could be achieved [21], averting approximately 531,000 neonatal deaths in 2025. If these two interventions were added to existing health system packages, especially noting the recent shifts to more facility births in Africa and Asia, then a high impact is possible even in a relatively short time frame.

Targets for care of preterm babies

The *Born Too Soon* report included a new goal for the reduction of deaths due to preterm birth [48]. The global goal is broken down into two different country groups: those that have already achieved a low level of neonatal mortality (less than 5 per 1,000 live births) and those countries that have not yet achieved this level. Three scenarios informed the target setting for mortality reduction for premature babies (Figure 8).

- For the countries that have already reached a neonatal mortality rate (NMR) of 5 per 1,000 live births or below by 2010: The goal is to eliminate remaining preventable preterm deaths, focusing on equitable care for all and quality of care to minimise long-term impairment.
- For countries with a neonatal mortality rate above 5 per 1,000 live births in 2010: The goal is to reduce their preterm birth-attributable mortality by 50% between 2010 and 2025. This reduction will mean that 550,000 premature babies will be saved each year by the target year of 2025. In addition, more babies will be saved who are moderately preterm but die of other causes (e.g. infections).

Target for preterm birth prevention

The *Born Too Soon* report also called for a technical expert group to create a goal for reduction of preterm birth rate by 2025 for announcement on World Prematurity Day 2012 [48]. The group published a paper in *The Lancet* detailing the findings of a comprehensive analysis of preterm prevalence data (2000–10) with analyses and projections for 39 countries with reliable trend data [11]. The authors suggested the conservative target of a relative reduction in preterm birth rates of 5% by 2015. This recommendation is based on analysis that if these highest-income countries were to fully implement five interventions to prevent preterm births, including smoking cessation and reducing the number of elective caesareans, an average 5% relative reduction in preterm birth could be achieved by 2015, varying from 8% reduction in the USA to much smaller reductions in most European countries, and only 2% in the UK. These interventions are limited impact and none are simple to implement. The findings highlight the urgent need for preterm birth research especially in low-income settings with the highest burden where the causes of prematurity might differ and have simpler solutions such as birth spacing and treatment of infections in pregnancy.

Figure 7. Targets for action by 2025.

Targets for action by 2025

The *Born Too Soon* report initiated a process towards achieving goals for preterm birth prevention and presented a new goal for the reduction of deaths due to complications of preterm birth (Figure 7) [48]. The latter goal was set through consultation by a group of technical experts, and several analyses were undertaken to inform this target, notably (1) projections by country of the deaths due to preterm birth from now until 2025, assuming no change in trends and assuming expected changes in Gross National Income (GNI); (2) reduction in preterm-specific neonatal mortality if the historical trends from the United Kingdom or the United States (Figure 4) were applied or if more rapid recent reductions in middle-income countries were applied (Figures 5 and 6); (3) preterm-specific neonatal mortality reductions predicted based on coverage changes according to the Lives Saved Tool Modelling (Table 2). These analyses used data from UN demographic projections of births [49] and the Child Health Epidemiology Reference Group/World Health Organization neonatal cause of death time series, 2000 to 2010 [50].

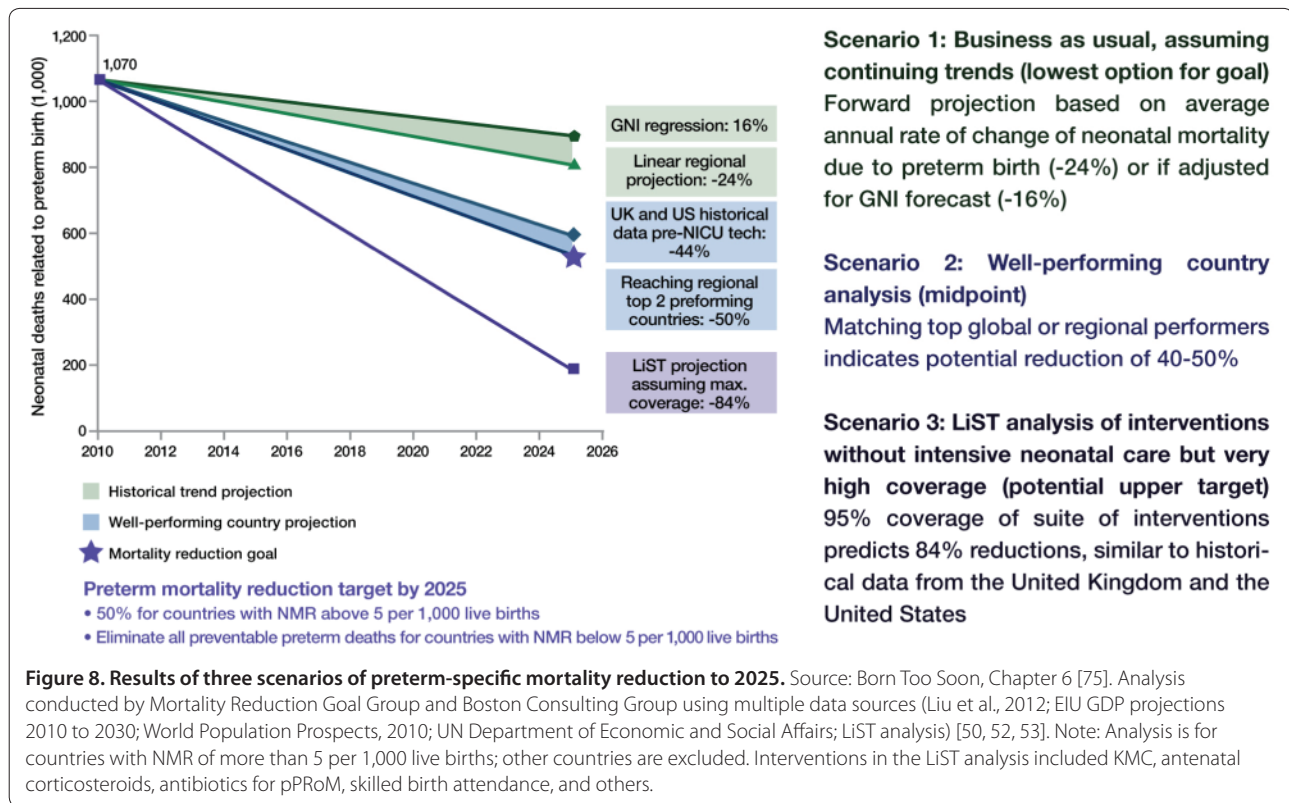
Using the results from analyses of the three future scenarios (Figure 8), a target for mortality reduction of preterm births was set and agreed by the technical experts (Figure 7).

Scenario 1: "Business as usual"

Should governments and the global community take no further direct action to address deaths due to preterm birth, mortality will decline by 24% by 2025 according to an analysis of regional trends over the past decade and forward projection (or 16%, if the projection is based on forecasted GNI change) (Figure 4). Given this scenario and taking into account changing numbers of births, the global total of preterm deaths will not reduce significantly by 2025, with around 900,000 premature babies continuing to die every year.

Scenario 2: Countries take action to catch up with top performers within their region

Preterm mortality could be halved by 2025 if governments took action now to match the top performers within their regions or to match the historical reductions in the United States and the United Kingdom from basic interventions before widespread use of intensive care (Figure 4). The examples of Sri Lanka and Turkey (see Figure 5) present examples of significant reduction in mortality, halving deaths in 10 years linked to scale up of intensive care. Even those countries with higher mortality rates that are not yet ready to scale up intensive care could see a 50% reduction as shown in the mid-20th century in the United States and the United Kingdom.



This reduction is achievable with improved essential care of premature babies and better case management of infections and respiratory distress syndrome, especially since the deaths of moderately-preterm babies are the most common and preventable ones.

There are high-impact, cost-effective interventions currently at low coverage [5,6], such as antenatal corticosteroids and KMC, that could significantly accelerate progress, which were not available in the United States and the United Kingdom in the middle of the 20th century when the neonatal mortality rate (NMR) was significantly reduced. Hence, it would be expected, with the inclusion of these and other innovations, that mortality reduction could be more rapid than for the historical examples.

Scenario 3: Countries achieve universal coverage of basic interventions

Should governments adopt universal coverage of interventions (95%) ensuring that every woman and child who needs an intervention receives it, then, according to the *LiST* analysis (Table 2) and the historical data (Figure 4), countries could achieve an 84% reduction of 1.1 million deaths due to preterm birth complications. While ensuring a 95% coverage rate is ideal and would result in a major mortality reduction, this process will take time. Initiating these changes can start to move countries

toward their goal of preterm mortality reduction while also preventing death due to other causes of newborn death, as well as maternal deaths and stillbirths, through shared interventions such as skilled care at birth.

Call to action

Born Too Soon is sobering in the news of a large burden and in the personal stories of loss behind that burden. Yet this is also a story of hope in the significant opportunities for change, especially as we approach the final sprint for the MDG 4 target and aim to maintain momentum beyond 2015. These first-ever country estimates of preterm birth leave us without the excuse of ignorance [3]. In 2010, 15 million babies — more than 1 in 10 births — were born too soon, an emotional and economic toll on families, communities and countries. The problem is increasing - for the countries with 20-year trend data, the majority show an increase in preterm birth rates [3]. Additionally, the burden is not shared equally, with the impact of preterm birth falling most severely on the poorest families and in low- and middle-income countries where health systems are less prepared to respond. There are also high preterm birth rates in many high-income countries, including the United States. Preterm birth is a problem that we all share; therefore, the solutions must also be shared, and won through cooperation, collaboration and coordination of the many constituencies and stakeholders.

Table 3. Everyone has a role to play: actions for the six key constituency groups involved in *Every Women Every Child*

Governments and policy-makers at local, national, regional and global levels:

Invest

- Set national targets for improved survival of premature babies and increase funding to ensuring equitable access to quality care to meet these targets by 2025.

Implement

- Strengthen health systems for quality maternal and neonatal care, including improved community awareness and demand for RMNCH services and adopt policies to promote universal access to quality preconception and maternal and perinatal services.

Innovate

- Promote the discovery, development and delivery of affordable and essential medicines, new technologies and novel models for training and services to prevent preterm birth and improve care of premature babies.

Inform

- Improve systems for collecting, evaluating and disseminating data on preterm birth rates, mortality, disability, quality of life and equitable coverage of evidence-based interventions to track progress towards MDGs 4 and 5 for maternal and child survival.

The United Nations and other multilateral organisations:

Invest

- Support countries develop and align their national health plans, including costing and tracking implementation to achieve the health MDGs and preterm birth mortality-reduction targets.

Implement

- Define norms and guidelines to support efforts to improve women's and children's health, and encourage their adoption through provision of technical assistance and programmatic support for the prevention and treatment of preterm births.

Innovate

- Generate and disseminate evidence on preterm birth and provide a platform for sharing best practices, and use the UN Commodities Commission to address gaps for essential equipment and medicines (e.g., antenatal corticosteroids).

Inform

- Support the production, dissemination and use of coverage data for evidence-based interventions through the Countdown to 2015 and Commission for Information and Accountability through the independent Expert Review Group.

Donors and philanthropic institutions:

Invest

- Provide sustained long-term support in line with national health policies and RMNCH plans that incorporate preterm births and are harmonised with other related global health initiatives.

Innovate

- Support high-priority research efforts to address solution gaps and implementation research to inform the scale up of evidence-based interventions to reduce preterm deaths.

Inform

- Promote transparent tracking of commitments and accountability and of long-term improvements in national health management and information systems.

The business community:

Invest

- Invest additional resources to develop and adapt devices and commodities to prevent and treat preterm birth in low-income settings using innovative partnerships and business models.

Implement

- Scale up best practices and partner with the public sector to improve service delivery and infrastructure for prevention and management of preterm birth.

Innovate

- Develop affordable new diagnostics, medicines, technologies and other interventions, including social and behavioural change, for preterm birth and make them available to the most vulnerable and marginalised.

Inform

- Use and strengthen existing tracking systems for commodities and devices to improve supply chain logistics.

Academic and research institutions:

Invest

- Agree upon and promote an innovative research agenda for prevention of preterm birth and improved pregnancy outcomes and implementation research to reduce deaths from preterm birth.

Implement

- Build capacity at research institutions, especially in low- and middle-income countries, and train professionals.

Innovate

- Advance policy development by improving the metrics for impairment outcomes as well as preterm birth rates, and link to other pregnancy outcomes, reporting on trends and emerging issues relating to preterm births.

Continued overleaf

Table 3. Continued

Inform

- Strengthen global networks to disseminate new research findings and best practice related to preterm birth through leveraging the momentum from Born Too Soon and commitments of these institutions.

Health care workers and their professional organisations:

Invest

- Advocate for and participate in evidence-based training, deployment and retention of workers with the necessary skills to address the burden of preterm birth.

Implement

- Use evidence-based standards to prevent or treat preterm births; implement training; and update curricula with evidence-based interventions. Treat women, newborns and children with respect and sensitivity.

Innovate

- Work in partnership to provide universal access to the essential package of interventions, including both prevention and care, and involving task shifting where appropriate.

Inform

- Improve data collection to track preterm births and measurements, such as consistent assessment of gestational age, birthweight, cause of death, data on impairment and retinopathy of prematurity.

Civil society:

Invest

- Advocate for increased attention to the health of women, newborns and children through strengthening parent groups and conducting national campaigns focusing on preterm birth.

Implement

- Strengthen community and local capabilities to scale up implementation of interventions for preterm birth and support families who have lost babies or require long-term support for disability.

Innovate

- Develop and test innovative approaches to deliver essential services for prevention and care, particularly ones aimed at the most vulnerable and marginalised people.

Inform

- Educate, engage and mobilise communities to improve health education and care, beginning in adolescence; promote cost-effective solutions; track progress and hold all stakeholders at global, regional, national and local levels accountable for their commitments; promote accountability through the issuance of annual Countdown to 2015 country data profiles and global and national reports that document preterm birth rates and associated mortality and coverage of evidence-based interventions.

Source: adapted from *Born Too Soon* report, chapter 6 [48]

A number of specific actions, pursued by all partners and applied across the RMNCH continuum of care, will help prevent preterm birth and associated mortality, and have an immediate, profound and sustained impact on human capital. The seven constituencies, as identified by *Every Woman Every Child* [7], have four action themes, which link closely to the principles of Act, Monitor and Review recommended by the Commission on Information and Accountability for Women's and Children's Health.

Invest

Bring both financial and other resources to address maternal and newborn health and the burden of preterm birth.

Implement

- Adapt integrated packages of care, considering contexts, and tailored to local health service delivery channels.

- Increase reach of existing preventive interventions in the preconception period, especially family planning, and including adolescent-friendly services.
- Ensure that every woman receives the high-quality care she needs during pregnancy, birth and postnatally, especially if she is at risk of preterm birth. There should be greater emphasis on the universal provision of antenatal corticosteroids, building on the work of the UN Commission on Life-Saving Commodities for Women and Children as an opportunity to accelerate progress.
- Undertake immediate action to scale up KMC as a standard of care for all preterm babies under 2,000 grams, regardless of resource setting.
- Improve methods for diagnosing and treating prematurity-related impairment in childhood.
- Ensure that every family has the support they need, immediately after birth of a premature baby, following its loss, or living with a child with prematurity-associated disability.

Parents, advocates and civil society have captured the attention of governments and monitored progress in the United States through support of an annual Premature Birth Report Card. The Report Card, a familiar means of assessing progress for school-age children, has been a powerful tool used in the United States to prevent preterm birth and its serious health consequences. These grades, used as a rallying point, have helped bring visibility and promote change. Issued by the March of Dimes every year since 2008, the Report Cards assign a letter grade to the United States and to each of 50 state governments. In addition, they summarise the actions that must be taken to fund prevention programs, address health care access and bring about needed change in health care systems.

Transparency and objectivity of the data and analysis are important factors in the success of the Report Cards. Each year, great care is taken to explain the methodology for grade determination and the basis of comparison to other states. Use of the Report Card grades by state governments has grown since the Report Cards were first launched in 2008, and coverage by local media is consistently strong.

One southern U.S. state, with the second highest preterm birth rate in the country, has received an “F” on its Report Card every year since 2008. The failing grade mobilised state health officials in early 2012 to launch a statewide initiative with the goal of reducing rates. In this state and many others, media events featuring prominent public officials are held to announce Report Card grades or report on state progress to address preterm birth. The U.S. Surgeon General has also participated in media outreach to publicise the Report Cards and their recommended actions.

Sustained effort by healthcare leaders and advocates at all levels, inside and outside of government, has elevated the issue of preterm birth on the nation’s health agenda, contributing to an announcement of new federal resources to test promising practices in February 2012. Soon after, the Association of State and Territorial Health Officials (ASTHO) joined with the March of Dimes to ask state health officials to pledge to reduce preterm birth rates in their states, and the pledge was incorporated into Report Cards. Top health officials in every state, along with Puerto Rico and the District of Columbia, signed the pledge.

As federal and state governments devote attention and resources to the problem, the Report Cards will continue to mobilise stakeholders and mark progress.

More information is available at <http://www.marchofdimes.com/mission/prematurity-reportcard.aspx>

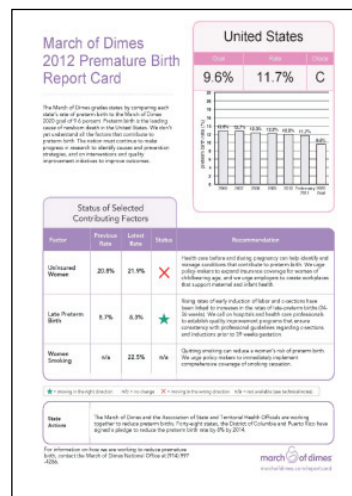


Figure 9. Government – national integrated campaign for preterm births.

Inform

Improve the data for preterm birth rates, mortality, impairment and their causes, with regular tracking of coverage, quality and equity gaps, as is done through Countdown to 2015 and linked to the work of the Commission for Information and Accountability using the data for action and accountability, including the establishment of national birth registrations.

Innovate

- Conduct multi-country collaborative research on the:
- Etiology of preterm birth, advancing the understanding of strategies to prevent and treat maternal health conditions associated with preterm birth (e.g., pre-eclampsia and gestational diabetes) and improving

identification of diagnostic markers and related screening tools.

- Implementation research to develop and deliver innovations to reach the poorest.

Table 3 details actions for the seven constituencies and Figures 9-14 provide examples of action. This agenda is ambitious, yet it can and must be accomplished if the actions are to be given the visibility, funding and attention they deserve. To be successful in our goals, the constituencies identified must work together collaboratively and in partnership in ways that are transparent to all, vigorous and accountable.

All of the partners, donors and contributors involved in the *Born Too Soon* movement see the report and this supplement as important next steps towards a world

The United Nations (UN) Secretary General's The Global Strategy for Women's and Children's Health highlighted inequities for women and children around the world and advocated for universal access to basic health care for all essential medicines and other commodities necessary to achieve MDGs 4, 5 and 6. Too often, cost-effective, high-impact health commodities do not reach the women and children who need them. Some of the barriers to access include the lack of affordable products, lack of age-appropriate formulations, weak supply chains, lack of awareness of how, why and when to use these commodities and inadequate regulatory capacity at the country level to protect the public from sub-standard or counterfeit medicines that cause harm.

The UN has established a Commission to address this issue, bringing together industry, civil society and technical experts to champion the effort to reduce the barriers that obstruct access to essential health commodities. Selected commodities will be:

1. High-impact and effective, addressing major causes of death and disease among children under five years of age and women during pregnancy and childbirth
2. Inadequately funded by existing mechanisms
3. Ready for innovation and rapid scale up in product development and market shaping:

A list of 13 commodities has been selected, and includes four with potential to reduce the 3 million deaths amongst newborns, especially those who are preterm. All of these commodities are high-impact, low-coverage, and none has had previous global funding:

- Antenatal corticosteroids reduce the risk of severe respiratory complications by half if given by injection to women in preterm labour, but this commodity is low-coverage even in middle-income countries, due to a number of supply and regulation issues and low awareness among health care providers. It has been estimated that up to 400,000 babies could be saved with this intervention, and the unit costs, if dexamethasone is used, is around one dollar per dose.
- Chlorhexidine cord care has recently been shown to be effective in reducing neonatal deaths due to sepsis: 320,000 neonates die each year of sepsis and many of them are moderately preterm. Rapid policy and program uptake of chlorhexidine could save many of these babies.
- Resuscitation devices and training mannequins have undergone recent innovations, but are still not widely available in many high-burden countries with scope to reduce neonatal deaths from intrapartum insults, as well as from preterm birth complications.
- Injection antibiotics, including gentamicin, are crucial for treating neonatal infections and yet, due to low dosing, are often mis-administered; innovations such as pre-packaged doses and needle-free technology could have a major effect on reaching the poorest.

Promotion of a robust supply of quality products with fair pricing is a unique opportunity to accelerate progress and save lives of women and children, and could contribute to halving the 1.1 million deaths due to preterm birth. More information available at <http://www.everywomaneverychild.org/resources/un-commission-on-life-saving-commodities>

Figure 10. The United Nations - Life-saving Commodities for Women and Children— potential for action to reduce preterm deaths.

where every woman, every newborn and every child is given the best chance to survive and thrive.

Conclusion - Together rapid change is possible

Over the last decade, the world has changed. Just as it is no longer acceptable for people with HIV/AIDS to remain untreated because they live in poor countries, it is no longer acceptable for women to die while giving birth. Likewise it should be unacceptable for almost 3 million newborns, to die, including those who are born too soon. Over three-quarters of premature babies who die could be saved if basic care reached them and their mothers. Rapid progress is possible. At the same time, research and innovation for preterm birth prevention is urgent.

These actions would reduce disability and chronic disease, improve reproductive and maternal health, and build sustainable health systems. We need more frontline health workers who are skilled and confident in newborn care. We need facilities equipped with life-saving commodities, and girls, and women who are educated, and enabled, can protect their own health, and that of their babies.

Additional File

Additional file 1. In line with the journal's open peer review policy, copies of the reviewer reports are included as additional file 1.

In 2010, the United States Agency for International Development (USAID) instituted a formal public-private partnership, called Global Development Alliance, to accelerate the scale up of a simplified neonatal resuscitation package, called Helping Babies Breathe (HBB). HBB brought together differing skills with a professional association, American Academy of Pediatrics (AAP), civil society and industry. Key constraints that had impeded scale up of neonatal resuscitation were in the lack of robust, fit-for-purpose equipment and the complexity of guidelines and training. AAP and others developed an evidence-based simplified pictorial algorithm for basic neonatal resuscitation. Laerdal designed and manufactured low-cost equipment, including bag and mask, a penguin suction device and Neonatalie (a robust training mannequin). A non-exclusive partnership with Laerdal facilitated the availability of these devices, as well as those of other manufacturers. Save the Children's role facilitated uptake, integration and sustainable scale up with ministries of health in lower-income countries. The U.S. National Institutes of Health (NIH) helped with evaluation. Other partners, including Johnson & Johnson and the Latter-day Saints Charities, have joined and generated momentum at global and country level.

HBB was developed in response to evidence that neonatal resuscitation training in facilities reduces term intrapartum-related deaths by 30% but the coverage is low in resource-limited areas [19, 70]. In less than two years, 34 countries have introduced HBB, 10 of which have developed national roll-out plans. Evidence from several developing countries suggests that basic neonatal resuscitation is an effective approach at scale to reduce newborn mortality [71, 72].

More information available at <http://www.helpingbabiesbreathe.org/GDAinformation>

Figure 11. Donors and philanthropic institutions - Helping Babies Breathe as an example of a public-private alliance to save newborns.

Many countries lack the technical capacity and human and financial resources to successfully implement facility-based neonatal intensive care. Equipment failures, management and personnel training, and stock outs of consumables hamper health delivery efforts. GE Healthcare and the East Meets West Foundation (EMW) have forged an alliance to solve these challenges. Building on the success of a program called Breath of Life, EMW and GE Healthcare are creating a suite of neonatal technologies that are durable, require few consumables, are easy to use and are specifically designed for sustainability in low-resource settings. The equipment is delivered in the context of a multi-year program of training, monitoring, clinical supervision and technical support. Since its launch by EMW in 2005, the Breath of Life program has been implemented in more than 280 hospitals across eight countries of South Asia, currently treating more than 55,000 babies a year.

Designed locally in Vietnam, EMW's neonatal equipment has maintained a failure rate below 5% compared to more than 80% for donated equipment from Western countries. Beyond core technologies of bubble CPAP, LED phototherapy and radiant warmers, the program also provides infection-control systems, ambu-bags, baby bonnets and a long list of ancillary equipment. Monitoring and training — a pervasive shortcoming of many technology-based programs — are core strengths of the Breath of Life program. EMW staff typically monitor every hospital in the network 3 to 5 times per week, and visit as often as twice a month for extended technical and clinical training and supervision.

In partnership with GE Healthcare, the Breath of Life program will be significantly expanded in scope and scale. Future devices will be engineered according to local design principles and follow stringent quality and regulatory review processes. As a global leader in the design and manufacture of advanced neonatal intensive care equipment, GE Healthcare can deliver and service these neonatal devices virtually anywhere in the world. Volume manufacturing should result in both lower costs and higher quality. This alliance of EMW and GE Healthcare is a powerful example of what partnerships can accomplish to help reduce the rate of preterm birth.

More information <http://www.eastmeetswest.org> and <http://www.gehealthcare.com>

Figure 12. The business community - Industry partnership for innovative technology for preterm baby care in Asia.

A premature baby's survival is dependent on both his mother's survival and on care received from several health care professional groups:

- Obstetricians, who provide effective care to the woman, prevent or manage preterm labour
- Midwives, who ensure safe delivery and resuscitate if necessary
- Paediatricians, who undertake advanced resuscitation and ongoing care if needed. Where most premature babies are born and die, there are few paediatricians and almost no neonatologists.

This cross-unit team can save lives; however, if none of these groups takes responsibility for premature babies, where minutes count between life and death, then more babies will die. Indeed, nurses and midwives are the front line workers for millions of premature babies in facilities in low- and middle-income countries. However, there is an acute shortage internationally of neonatal nurses, or nurses who receive specific training in newborn care, particularly in low-income countries [73]. Those nurses, who commit to newborn care, often receive little or no recognition for providing excellent care against all the odds.

Regina Obeng has worked in the neonatal unit at the Komfo Anokye Teaching Hospital in Kumasi, Ghana for over 20 years [74]. Not accepting newborn deaths as inevitable, she has dedicated her life to saving babies in her crowded ward, where 350 to 400 newborns are cared for each month. She has been a consistent voice for these babies and their mothers, speaking up for more space, better supplies and, especially, more staff and ways to retain skilled staff, and places for mothers to stay. Regina was awarded the International Neonatal Nursing Excellence Award in 2010, given by the International Conference of Neonatal Nurses (ICNN) together with Save the Children, the Council of International Neonatal Nurses (COINN) and the Neonatal Nurses Association of South Africa (NNASA). Now her voice is even stronger in Ghana, raising public awareness about the issues facing mothers and newborn babies, particularly prematurity, and has influenced even the highest levels of the Ministry of Health to ensure neonatal nurses' training will start in Ghana.

Figure 13. Health care workers - Health care providers as champions of change for mothers and newborns.

Groups of parents affected by preterm birth are an influential civil society group, supporting affected families and being their voice in government and among health policy planners. The Home for Premature Babies (HPB) is an example of a parent group advocating for improvements in care and support. As the largest preterm birth association of parents and families among Chinese-speaking nations, the membership of HPB now exceeds 400,000 families.

Formed in 2005 by Mrs. Jianian Ma, a mother of a very preterm baby, HPB now encompasses several foundations that provide nationwide services in support of prevention and care. With the sponsorship of the China National Committee for the Well-being of the Youth, HPB was established as a semi-governmental organization. This close central government tie has helped ensure continuity of HPB's funding and the ability to partner more effectively with other organizations in China.

HPB has established three centres dedicated to the care of children with prematurity-related disabilities; launched an interactive website to allow parents and prospective parents to ask qualified medical experts about ways to help minimise the risk of having a preterm birth and how to care for their preterm baby; implemented a telephone hotline to provide immediate responses to parents' questions; and established a "Green Track" in more than 100 hospitals nationwide that allows families with a sick preterm child to see a paediatrician quickly.

"As we have experienced in China, groups of parents affected by preterm birth can be an independent and uniquely powerful grassroots voice, calling on government, professional organizations, civil society, the business community and other partners in their countries to work together to prevent prematurity, improve care of the preterm baby and help support affected families." Dr. Nanbert Zhong, Chair, Advisory Committee for Science and International Affairs, HPB.

Figure 14. Civil society - Chinese parents mobilising for their preterm babies.

Competing interests

The authors declare no conflict of interest

Author contribution

The chapter was coordinated by JEL with MVK; drafted by JEL, MVK, CPH, EL and all other authors reviewed and contributed.

Acknowledgments

The *Born Too Soon* Preterm Birth Action Group, including Preterm Birth Technical Review Panel and all the report authors (in alphabetical order): José Belizán (chair), Hannah Blencowe, Zulfiqar Bhutta, Sohni Dean, Andres de Francisco, Christopher Howson, Mary Kinney, Mark Klebanoff, Joy Lawn, Silke Mader, Elizabeth Mason (chair), Jeffrey Murray, Pius Okong, Carmencita Padilla, Robert Pattinson, Jennifer Requejo, Craig Rubens, Andrew Serazin, Catherine Spong, Antoinette Tshetu, Rexford Widmer, Khalid Yunis, Nanbert Zhong We would like to thank the Bill & Melinda Gates Foundation for providing the support of the Boston Consulting Group. We greatly appreciated the work of Ingrid Friberg and Neff Walker on the Lives Saved analysis. Many others contributed to the development of this paper including: Janis Biermann, Robert Black, William Callaghan, Erica Corbett, Sherin Devaskar, Uday Devaskar, Siobhan Dolan, Sean Fallon, Enrique Gadov, Claudia Vera Garcia, Mary Giammarino, Angela Gold, Metin Gülemzöglü, Monika Gutestam, Jay Iams, Lily Kak, Michael Katz, Kate Kerber, Gustavo Leguizamón, Li Liu, Bill Masto, Lori McDougall, Jane McElligott, Merry-K Moos, Juan Nardin, Rajesh Narwal, Stephen Nurse-Findlay, C Scott Palubiak, Jo Ann Paradis, Sonja Rasmussen, Mary-Elizabeth Reeve, Sarah Rohde, Florence Rusciano, Harendra de Silva, Joe Leigh Simpson, Maria Regina Torloni, Phyllis Williams-Thompson. Thank you to Megan Bruno for production support in the development of this paper.

Funding

The time of JEL and MVK was funded by a grant from Bill & Melinda Gates Foundation to Save the Children's Saving Newborn Lives programme. The Born Too Soon report was funded by March of Dimes, the Partnership for Maternal, Newborn and Child Health and Save the Children. The Born Too Soon series in Reproductive Health was funded by March of Dimes and Save the Children. Funding from Save the Children is provided by a grant from Bill & Melinda Gates Foundation to Save the Children's Saving Newborn Lives programme.

List of abbreviations used

KMC: Kangaroo Mother Care; PMNCH: Partnership for Maternal, Newborn and Child Health; pPROM: Pre-labour premature rupture of membranes; RMNCH: Reproductive, Maternal, Newborn and Child Health; STI: Sexually Transmitted Infection; WHO: World Health Organization.

Author details

¹MARCH, London School Hygiene & Tropical Medicine, UK. ²Saving Newborn Lives/Save the Children. ³Save the Children, Cape Town South Africa. ⁴Institute for Clinical Effectiveness and Health Policy (IECS), Buenos Aires, Argentina. ⁵World Health Organization, Geneva, Switzerland. ⁶The Partnership for Maternal, Newborn and Child Health, Geneva, Switzerland. ⁷Boston Consulting Group, Washington DC, USA. ⁸Global Alliance to Prevent Prematurity and Stillbirth (GAPPS), Seattle, WA, USA. ⁹Johns Hopkins University, Baltimore, Maryland, USA. ¹⁰March of Dimes, White Plains, NY, USA.

Published: 15 November 2013

References

1. Kinney MV, Lawn JE, Howson CP, Belizan J: **15 Million preterm births annually: what has changed this year?** *Reprod Health* 2012, **9**:28.
2. Howson CP, Kimmey MV, McDougall L, Lawn JE: **Born Too Soon: Preterm birth matters.** *Reprod Health* 2013, **10**(Suppl 1):S1.
3. Blencowe H, Cousens S, Chou D, Oestergaard M, Say L, Moller AB, Kinney M, Lawn J: **Born Too Soon: The global epidemiology of 15 million preterm births.** *Reprod Health* 2013, **10**(Suppl 1):S2.
4. Dean SV, Mason EM, Howson CP, Lassi ZS, Imam AM, Bhutta ZA: **Born Too Soon: Care before and during pregnancy to prevent preterm births: from evidence to action.** *Reprod Health* 2013, **10**(Suppl 1):S3.
5. Requejo J, Althabe F, Meriardi M, Keller K, Katz J, Menon R: **Born Too Soon: Care during pregnancy and childbirth to reduce preterm deliveries and improve health outcomes of the preterm baby.** *Reprod Health* 2013, **10**(Suppl 1):S4.
6. Lawn JE, Davidge R, Paul VK, von Xylander S, De Graft Johnson J, Costello A, Kinney MV, Segre J, Molyneux E: **Born too soon: Care for the preterm baby.** *Reprod Health* 2013, **10**(Suppl 1):S5.
7. Ban K: **Global Strategy for Women's and Children's Health.** In. New York, NY, USA: United Nations; 2010.
8. Bhutta ZA, Yakoob MY, Lawn JE, Rizvi A, Friberg IK, Weissman E, Buchmann E, Goldenberg RL: **Stillbirths: what difference can we make and at what cost?** *Lancet* 2011, **377**(9776):1523-1538.
9. National Collaborating Centre for Women's and Children's Health: **Caesarean Section (update): Clinical guidelines.** In. London, United Kingdom: National Institute for Health and Clinical Excellence; 2011.
10. Oshiro BT, Kowalewski L, Sappenfield W, Alter CC, Bettegowda VR, Russell R, Curran J, Reeves L, Kacica M, Andino N et al: **A multistate quality improvement program to decrease elective deliveries before 39 weeks of gestation.** *Obstet Gynecol* 2013, **121**(5):1025-1031.
11. Chang HH, Larson J, Blencowe H, Spong CY, Howson CP, Cairns-Smith S, Lackritz EM, Lee SK, Mason E, Serazin N et al: **Preventing preterm births: analysis of trends and potential reductions with interventions in 39 countries with very high human development index.** *Lancet* 2013, **381**(9862):223-234.
12. Lawn JE, Gravett MG, Nunes TM, Rubens CE, Stanton C: **Global report on preterm birth and stillbirth (1 of 7): definitions, description of the burden and opportunities to improve data.** *BMC Pregnancy Childbirth* 2010, **10** Suppl 1:S1.
13. Gravett MG, Rubens CE, Global Alliance to Prevent P, Stillbirth Technical T: **A framework for strategic investments in research to reduce the global burden of preterm birth.** *Am J Obstet Gynecol* 2012, **207**(5):368-373.
14. Althabe F, Belizan JM, Mazzoni A, Berrueta M, Hemingway-Foday J, Koso-Thomas M, McClure E, Chomba E, Garces A, Goudar S et al: **Antenatal corticosteroids trial in preterm births to increase neonatal survival in developing countries: study protocol.** *Reprod Health* 2012, **9**:22.
15. Blencowe H, Cousens S, Oestergaard MZ, Chou D, Moller AB, Narwal R, Adler A, Vera Garcia C, Rohde S, Say L et al: **National, regional, and worldwide estimates of preterm birth rates in the year 2010 with time trends since 1990 for selected countries: a systematic analysis and implications.** *Lancet* 2012, **379**(9832):2162-2172.
16. Prost A, Colbourn T, Seward N, Azad K, Coomarasamy A, Copas A, Houweling TA, Fottrell E, Kuddus A, Lewycka S et al: **Women's groups practising participatory learning and action to improve maternal and newborn health in low-resource settings: a systematic review and meta-analysis.** *Lancet* 2013, **381**(9879):1736-1746.
17. Gooding JS, Cooper LG, Blaine AI, Franck LS, Howse JL, Berns SD: **Family support and family-centered care in the neonatal intensive care unit: origins, advances, impact.** *Semin Perinatol* 2011, **35**(1):20-28.
18. Zaidi AK, Ganatra HA, Syed S, Cousens S, Lee AC, Black R, Bhutta ZA, Lawn JE: **Effect of case management on neonatal mortality due to sepsis and pneumonia.** *BMC Public Health* 2011, **11** Suppl 3:S13.
19. Lee AC, Cousens S, Wall SN, Niermeyer S, Darmstadt GL, Carlo WA, Keenan WJ, Bhutta ZA, Gill C, Lawn JE: **Neonatal resuscitation and immediate newborn assessment and stimulation for the prevention of neonatal deaths: a systematic review, meta-analysis and Delphi estimation of mortality effect.** *BMC Public Health* 2011, **11** Suppl 3:S12.
20. Mwansa-Kambafwile J, Cousens S, Hansen T, Lawn JE: **Antenatal steroids in preterm labour for the prevention of neonatal deaths due to complications of preterm birth.** *Int J Epidemiol* 2010, **39** Suppl 1:i122-133.
21. Lawn JE, Mwansa-Kambafwile J, Horta BL, Barros FC, Cousens S: **'Kangaroo mother care' to prevent neonatal deaths due to preterm birth complications.** *Internal Journal of Epidemiology* 2010:i1-i10.
22. Kerber KJ, de Graft-Johnson JE, Bhutta ZA, Okong P, Starrs A, Lawn JE: **Continuum of care for maternal, newborn, and child health: from slogan to service delivery.** *Lancet* 2007, **370**(9595):1358-1369.
23. PMNCH: **A Global Review of the Key Interventions Related to Reproductive, Maternal, Newborn and Child Health (RMNCH).** In. Geneva, Switzerland: The Partnership for Maternal, Newborn & Child Health; 2011.
24. Ekman B, Pathmanathan I, Liljestrand J: **Integrating health interventions for women, newborn babies, and children: a framework for action.** *Lancet* 2008, **372**(9642):990-1000.
25. Friberg IK, Kinney MV, Lawn JE, Kerber KJ, Odubanjo MO, Bergh AM, Walker N, Weissman E, Chopra M, Black RE et al: **Sub-Saharan Africa's mothers, newborns, and children: how many lives could be saved with targeted health interventions?** *PLoS medicine* 2010, **7**(6):e1000295.

26. Pattinson R, Kerber K, Buchmann E, Friberg IK, Belizan M, Lansky S, Weissman E, Mathai M, Rudan I, Walker N et al: **Stillbirths: how can health systems deliver for mothers and babies?** *Lancet* 2011, **377**(9777):1610-1623.
27. Lassi ZS, Majeed A, Rashid S, Yakoob MY, Bhutta ZA: **The interconnections between maternal and newborn health - evidence and implications for policy.** *The journal of maternal-fetal & neonatal medicine: the official journal of the European Association of Perinatal Medicine, the Federation of Asia and Oceania Perinatal Societies, the International Society of Perinatal Obstet* 2013, **26** Suppl 1:3-53.
28. Kinney MV, Kerber KJ, Black RE, Cohen B, Nkrumah F, Coovadia H, Nampala PM, Lawn JE, Axelson H, Bergh AM et al: **Sub-Saharan Africa's mothers, newborns, and children: where and why do they die?** *PLoS medicine* 2010, **7**(6):e1000294.
29. Requejo JH, Bryce J, Victora C, Deixel A: **Accountability for maternal, newborn and child survival: The 2013 Update.** In. Geneva: World Health Organization and UNICEF; 2013.
30. Lawn JE, Rudan I, Rubens C: **Four million newborn deaths: is the global research agenda evidence-based?** *Early Hum Dev* 2008, **84**(12):809-814.
31. Goldenberg RL, Gravett MG, Iams J, Papageorghiou AT, Waller SA, Kramer M, Culhane J, Barros F, Conde-Agudelo A, Bhutta ZA et al: **The preterm birth syndrome: issues to consider in creating a classification system.** *Am J Obstet Gynecol* 2012, **206**(2):113-118.
32. Kramer MS, Papageorghiou A, Culhane J, Bhutta Z, Goldenberg RL, Gravett M, Iams JD, Conde-Agudelo A, Waller S, Barros F et al: **Challenges in defining and classifying the preterm birth syndrome.** *Am J Obstet Gynecol* 2012, **206**(2):108-112.
33. Mwaniki MK, Atieno M, Lawn JE, Newton CR: **Long-term neurodevelopmental outcomes after intrauterine and neonatal insults: a systematic review.** *Lancet* 2012, **379**(9814):445-452.
34. Blencowe H, Lee AC, Cousens S, Bahalim A, Narwal R, Zhong N, Chou D, Say L, Modi N, Katz J et al: **Preterm birth associated impairment estimates at regional and global level for 2010.** *Pediatric Research* submitted.
35. Romero R, Gotsch F, Pinedes B, Kusanovic JP: **Inflammation in pregnancy: its roles in reproductive physiology, obstetrical complications, and fetal injury.** *Nutrition reviews* 2007, **65**(12 Pt 2):S194-202.
36. Nygren P, Fu R, Freeman M, Bougatsos C, Klebanoff M, Guise JM, Force USPST: **Evidence on the benefits and harms of screening and treating pregnant women who are asymptomatic for bacterial vaginosis: an update review for the U.S. Preventive Services Task Force.** *Annals of internal medicine* 2008, **148**(3):220-233.
37. **Antenatal corticosteroids** [http://www.healthynewbornnetwork.org/topic/antenatal-corticosteroids]
38. Campbell C: **Elective cesarean delivery: trends, evidence and implications for women, newborns and nurses.** *Nurs Womens Health* 2011, **15**(4):308-318.
39. Lawn JE, Cousens S, Bhutta ZA, Darmstadt GL, Martinez J, Paul V, Knippenberg R, Fogstad H, Shetty P, Horton R: **Why are 4 million newborn babies dying each year?** *Lancet* 2004, **364**(9432):399-401.
40. Conde-Agudelo A, Belizan JM, Diaz-Rossello J: **Kangaroo mother care to reduce morbidity and mortality in low birthweight infants.** *Cochrane Database of Systematic Reviews* 2011, **3**:CD002771.
41. Bahl R, Martines J, Bhandari N, Biloglav Z, Edmond K, Iyengar S, Kramer M, Lawn JE, Manandhar DS, Mori R et al: **Setting research priorities to reduce global mortality from preterm birth and low birth weight by 2015.** *Journal of global health* 2012, **2**(1):10403.
42. Institute of Medicine: **Preterm Birth: Causes, Consequences, and Prevention.** In. Washington, D.C.: National Academy Press; 2007.
43. **LiST: The Lives Saved Tool. An evidence-based tool for estimating intervention impact** [http://www.jhsph.edu/dept/ih/IIP/list/index.html]
44. Boschi-Pinto C, Black RE: **Development and use of the Lives Saved Tool: a model to estimate the impact of scaling up proven interventions on maternal, neonatal and child mortality.** *Int J Epidemiol* 2011, **40**(2):520-521.
45. Stover J, McKinnon R, Winfrey B: **Spectrum: a model platform for linking maternal and child survival interventions with AIDS, family planning and demographic projections.** *Int J Epidemiol* 2010, **39** Suppl 1:i7-10.
46. Victora CG, Barros AJD, Malpica-Llanos T, Walker N: **How within-country inequities and co-coverage may affect LiST estimates of lives saved by scaling up interventions.** *BMC Public Health* 2013, **12**(Suppl 3):S24.
47. Walker N, Tam Y, Friberg IK: **Overview of the Lives Saved Tool (LiST).** *BMC Public Health* 2013, **13**(Suppl 3):S1.
48. March of Dimes, PMNCH, Save the Children, WHO.: **Born Too Soon: The Global Action Report on Preterm Birth.** In. Edited by Howson CP, Kinney M, Lawn JE. Geneva: World Health Organization; 2012.
49. **World Population Prospects: The 2010 Revision** [http://esa.un.org/unpd/wpp/unpp/panel_population.htm]
50. Liu L, Johnson HL, Cousens S, Perin J, Scott S, Lawn JE, Rudan I, Campbell H, Cibulskis R, Li M et al: **Global, regional, and national causes of child mortality: an updated systematic analysis for 2010 with time trends since 2000.** *Lancet* 2012, **379**(9832):2151-2161.
51. Lawn JE, Kinney MV, Black RE, Pitt C, Cousens S, Kerber K, Corbett E, Moran AC, Morrissey CS, Oestergaard MZ: **Newborn survival: a multi-country analysis of a decade of change.** *Health policy and planning* 2012, **27** Suppl 3:iii6-28.
52. United Nations Population Division: **World Population Prospects: The 2010 Revision.** In. New York, NY; United Nations; 2010.
53. **EIU CountryData** [http://www.eiu.com/site_info.asp?info_name=EIUCountryData&entr.]
54. **National Vital Statistics Reports** [http://www.cdc.gov/nchs/products/nvsr.htm#vol60]
55. **Office for National Statistics licensed under the Open Government Licence v.1.0** [http://www.ons.gov.uk/ons/index.html]
56. **NIH: Neonatal Intensive Care: A history of excellence.** In. Bethesda, MD, USA: National Institute of Health; 1985.
57. Smith GF, Vidyasagar D, Smith PN: **Historical Review and Recent Advances in Neonatal and Perinatal Medicine.** Chicago: Mead Johnson Nutritional Division; 1983.
58. Jamison DT, Shahid-Salles SA, Jamison J, Lawn J, Zupan J: **"Incorporating Deaths Near the Time of Birth into Estimates of the Global Burden of Disease".** New York, NY: Oxford University Press; 2006.
59. Lissauer T, Fanaroff AA: **Neonatology at a Glance - At a glance.** Oxford: Wiley-Blackwell; 2006.
60. Baker JP: **The incubator and the medical discovery of the premature infant.** *Journal of perinatology: official journal of the California Perinatal Association* 2000, **20**(5):321-328.
61. Philip AG: **The evolution of neonatology.** *Pediatric research* 2005, **58**(4):799-815.
62. Wegman ME: **Infant mortality in the 20th century, dramatic but uneven progress.** *The Journal of nutrition* 2001, **131**(2):401S-408S.
63. UNICEF: **Levels and trends of child mortality: 2011 report. Estimates Developed by the UN Inter-agency Group for Child Mortality Estimation.** In. New York: UNICEF, WHO, World Bank, United Nations Population Division; 2011.
64. Demirel G, Dilmen U: **Success of Decreasing Neonatal Mortality in Turkey.** *Med J of Islamic World Acad of Sci* 2011, **19**(4):161-164.
65. Kultursay N: **The status of women and of maternal and perinatal health in Turkey.** *Turk J Pediatr* 2011, **53**(1):5-10.
66. Baris E, Mollahaliloglu S, Aydin S: **Healthcare in Turkey: from laggard to leader.** *BMJ* 2011, **342**:c7456.
67. WHO: **WHO Country Cooperation Strategy 2006-2011: Democratic Socialist Republic of Sri Lanka.** In. Sri Lanka: World Health Organization; 2006.
68. United Nations Millennium Project: **Who's Got the Power: Transforming Health Systems for Women and Children.** In.: Task Force on Child Health and Maternal Health; 2005.
69. Senanayake H, Goonewardene M, Ranatunga A, Hattotuwa R, Amarasekera S, Amarasinghe I: **Achieving Millennium Development Goals 4 and 5 in Sri Lanka.** *BJOG: an international journal of obstetrics and gynaecology* 2011, **118** Suppl 2:78-87.
70. Wall SN, Lee AC, Niermeyer S, English M, Keenan WJ, Carlo W, Bhutta ZA, Bang A, Narayanan I, Ariawan I et al: **Neonatal resuscitation in low-resource settings: what, who, and how to overcome challenges to scale up?** *Int J Gynaecol Obstet* 2009, **107** Suppl 1:S47-62, S63-44.
71. Msemu G, Massawe A, Mmbando D, Rusibamayila N, Manji K, Kidanto HL, Mwizamuholya D, Ringia P, Ersdal HL, Perlman J: **Newborn mortality and fresh stillbirth rates in Tanzania after helping babies breathe training.** *Pediatrics* 2013, **131**(2):e353-360.
72. Goudar SS, Somannavar MS, Clark R, Lockyer JM, Revankar AP, Fidler HM, Sloan NL, Niermeyer S, Keenan WJ, Singhal N: **Stillbirth and newborn mortality in India after helping babies breathe training.** *Pediatrics* 2013, **131**(2):e344-352.
73. Kinney M, Davidge R, Lawn JE: **15 Million born too soon: What neonatal nurses can do.** *Journal of Neonatal Nursing* 2013, **19**:58-65.
74. Samarasekera U: **Regina Obeng - dedicated to improving newborn health in Ghana.** *Lancet* 2010, **376**(9757):1979.
75. Preterm Birth Action Group: **Actions everyone has a role to play.** In *Born Too Soon: The global action report on preterm births.* Edited by Howson CP, Kinney M, Lawn JE, Geneva, Switzerland: World Health Organization; 2012.

doi:10.1186/1742-4755-10-S1-S6

Cite this article as: Lawn JE, et al.: Born Too Soon: Accelerating action for prevention and care of 15 million newborns born too soon. *Reproductive Health* 2013, **10**(Suppl 1):S6.