

Haibu, M., Margraf, C., Miranda, M. D. M. & Nielsen, J. P. (2016). The Link Between Classical Reserving and Granular Reserving Through Double Chain Ladder and its Extensions. *British Actuarial Journal*, 21(1), pp. 97-116. doi: 10.1017/S1357321715000288



**CITY UNIVERSITY
LONDON**

[City Research Online](#)

Original citation: Haibu, M., Margraf, C., Miranda, M. D. M. & Nielsen, J. P. (2016). The Link Between Classical Reserving and Granular Reserving Through Double Chain Ladder and its Extensions. *British Actuarial Journal*, 21(1), pp. 97-116. doi: 10.1017/S1357321715000288

Permanent City Research Online URL: <http://openaccess.city.ac.uk/12534/>

Copyright & reuse

City University London has developed City Research Online so that its users may access the research outputs of City University London's staff. Copyright © and Moral Rights for this paper are retained by the individual author(s) and/ or other copyright holders. All material in City Research Online is checked for eligibility for copyright before being made available in the live archive. URLs from City Research Online may be freely distributed and linked to from other web pages.

Versions of research

The version in City Research Online may differ from the final published version. Users are advised to check the Permanent City Research Online URL above for the status of the paper.

Enquiries

If you have any enquiries about any aspect of City Research Online, or if you wish to make contact with the author(s) of this paper, please email the team at publications@city.ac.uk.

The Link Between Classical Reserving and Granular Reserving Through Double Chain Ladder and its Extensions

MUNIR HIABU

Cass Business School, City University London, U.K.

Munir.Hiabu.1@cass.city.ac.uk

CAROLIN MARGRAF

Cass Business School, City University London, U.K.

Carolin.Margraf.1@cass.city.ac.uk

MARÍA DOLORES MARTÍNEZ MIRANDA

University of Granada, Spain

mmiranda@ugr.es

JENS PERCH NIELSEN

Cass Business School, City University London, U.K.

Jens.Nielsen.1@city.ac.uk

September 8, 2015

Abstract

The relationship of the chain ladder method to mathematical statistics has long been debated in actuarial science. During the nineties it became clear that the originally deterministic chain ladder can be seen as an autoregressive time series or as a multiplicative Poisson model. This paper draws on recent research and concludes that chain ladder can be seen as a structured histogram. This gives a direct link between classical aggregate methods and continuous granular methods. When the histogram is replaced by a smooth counter part, we have a continuous chain ladder model. Re-inventing classical chain ladder via double chain ladder and its extensions introduces statistically solid approaches of combining paid and incurred data with direct link to granular data approaches. This paper goes through some of the extensions of double chain ladder and introduces new approaches to incorporating and modelling incurred data.

Keywords: Stochastic Reserving; General Insurance; Solvency II; Chain Ladder; Reserve Risk; Claims Inflation; Incurred Data; Model Validation; Granular Data.

1 Introduction

Double chain ladder is a bridge between the chain ladder method (CLM) and mathematical statistics. Double chain ladder is modelling the full system of reported claims, their delay and the resulting claims. Bootstrapping it with or without parameter uncertainty is easy. Double chain ladder bootstrapping does not face the stability problems resulting when bootstrapping the CLM. The full model structure is the key here: bootstrapping a well defined statistical model is simple and straightforward. The reason it is tricky to bootstrap the CLM is that only one part of the system is modelled: the aggregated paid or incurred claims. The full data generation process is not known in classical chain ladder, and approximations have to be introduced to come up with some sort of bootstrapping. The typical assumption taken is that all adjusted residuals arise from the same distribution. But adjusted residuals on the aggregated paid data or incurred data models do not follow the same distribution. These residuals can be very close to the normal distribution and very right skewed depending on the underlying number of claims leading to this residual. Instability occurs if an unimportant right skewed residual of little weight is reshuffled as a very important residual in the bootstrap. Double chain ladder is estimated from the exact same data structure as chain ladder. It uses triangle type of data on frequencies, paid and incurred data. Communicating the implementation and structure of double chain ladder to actuaries is therefore a simple exercise. Furthermore, double chain ladder gives - almost - the exact same reserve as chain ladder. One can therefore see double chain ladder as a more stable, better understood version of CLM with the clear advantage of being easy to generalize. When generalizing or developing double chain ladder, the actuary can see any development as moving away from chain ladder. The vast amount of experience and tacit knowledge actuaries have invested in the chain ladder model is therefore directly useful when working with and interpreting double chain ladder and its extensions. In this paper we will consider double chain ladder, double chain ladder and Bornhuetter-Ferguson, incurred double chain ladder and RBNS-preserving double chain ladder and we will give these four methods the acronyms DCL, BDCL, IDCL and PDCL. BDCL was the first published extension of DCL. It was verified that the severity inflation (inflation in cost per claim) in the underwriting year direction is the key to many of the hardest challenges of chain ladder, and it was shown that this severity inflation could be extracted from incurred data via a simple estimation trick. Replacing the paid data's severity inflation in DCL with the incurred data's severity inflation is the definition of BDCL. Incurred double chain ladder is simply defined as that severity inflation (cost per claim in the underwriting year direction) resulting exactly in the same reserves for every underwriting year as the reserve

resulting from the chain ladder method applied to incurred data. The advantage of having IDCL instead of the incurred chain ladder is similar to the advantages of having DCL instead of chain ladder given above. Finally PDCL is one version of double chain ladder that does not change the RBNS values. DCL was published via the three Astin Bulletin papers, Verrall et al. (2010) and Martínez-Miranda et al. (2011, 2012). BDCL was published in North American Actuarial Journal in Martínez-Miranda et al. (2013b), PDCL is introduced in this British Actuarial Journal paper and IDCL was introduced in the Variance paper Agbeko et al. (2015). One could have that point of view that developments of double chain ladder might become redundant, when full granular reserving based on micro models enter actuarial practice. While this might be true, then we believe that granular reserving should be developed in the exact same way as double chain ladder was developed: one should be able to follow step by step how an aggregate chain ladder is changed into a granular model and developed. When progressing this way, one makes sure that the tacit knowledge and experience of actuaries, built via the CLM, is carried over to the granular data approach. We call this “the bath water approach” to developing reserving techniques, because we do not want to throw the baby out with the bathwater and develop new methods missing important features and properties of classical methods. In Section 6 below, a preliminary first approach to granular chain ladder called continuous chain ladder is described. Continuous chain ladder is a smooth structured density reflecting the fact that chain ladder could be viewed as a structured histogram. The difference between a structured smooth density and a structured histogram is just which nonparametric estimation procedure is applied. The histogram approach reproducing chain ladder or a smooth version of it called continuous chain ladder. Since chain ladder itself is a granular method based on a suboptimal histogram approach, everything we develop via double chain ladder and it’s extensions can indeed be viewed as granular methods with smooth continuous counter parts waiting to be formally defined.

The rest of the paper is structured as follows. Section 2 describes the data and the expert knowledge, introduces the notation and defines the model assumptions. Section 3 discusses the outstanding loss liabilities point estimates. Section 4 describes four methods to estimate the parameters in the model: DCL, BDCL, PDCL and IDCL. The validation of these four methods is considered in Section 5 through a back-testing procedure. Section 6 describes the link between classical reserving and granular reserving. Section 7 provides some concluding remarks.

2 Data and first moment assumptions and some comments on granular data

This section describes the classical aggregated data used in most non-life insurance companies. However, in Section 6 below we make it clear that working with this kind of aggregated data indeed is very closely connected to working with granular data. The resulting estimators of aggregated data are piecewise constant or structured histograms, while the resulting estimators of continuous data are continuous and easier to optimize. Because the classical chain ladder method is closely related to the continuous chain ladder method, every single extension of double chain ladder is also a contribution to granular methodology. One can - so to speak - develop the practical ideas on aggregated data and develop the continuous versions later. This paper will work on aggregated data, in the form of incremental run-off triangles, and contribute to the understanding and validation of chain ladder, but it will in particular introduce new ways of considering incurred data and expert opinion. We start by describing the data and expert knowledge extracted from incurred data, that we are going to work with. Data are aggregated incurred counts (data), aggregated payments (data) and aggregated incurred payments (expert knowledge). All of those three objects have the same structural form, i.e. they live on the upper triangle

$$\mathcal{I} = \{(i, j) : i = 1, \dots, m, j = 0, \dots, m - 1; i + j \leq m\},$$

$m > 0$. Here, m is the number of underwriting years observed. It will be assumed that the reporting delay, that is the time from underwriting of a claim until it is reported, as well as the settlement delay, that is the delay between the report of a claim and its settlement, are bounded by m . This, in contrast to the classical CLM, will make it possible to also get estimates in the tail, that is when reporting delay plus settlement delay is greater than m . Our data can now be described as follows. The data:

Aggregated incremental incurred counts: $N_{\mathcal{I}} = \{N_{ik} : (i, k) \in \mathcal{I}\}$, with N_{ik} being the total number of claims of insurance incurred in year i which have been reported in year $i + k$, i.e. with k periods delay from year i .

Aggregated incremental payments: $X_{\mathcal{I}} = \{X_{ij} : (i, j) \in \mathcal{I}\}$, with X_{ij} being the total payments from claims incurred in year i and paid with j periods delay from year i .

Note that the meaning of the second coordinate of triangle \mathcal{I} varies between the two different data. While in the counts triangle it represents the reporting delay, in the payments triangle it represents the development delay, that is reporting delay plus

settlement delay.

To describe the aggregated incurred payments, we need some theoretical micro-structural descriptions. These micro-structural descriptions follow the line of Martínez-Miranda et al. (2012) and also build the base of the forthcoming DCL assumptions. By N_{ikl}^{paid} , we will denote the number of the future payments originating from the N_{ik} reported claims, which were finally paid with a delay of $k+l$, where $l = 0, \dots, m-1$.

Also, let $X_{ikl}^{(h)}$ denote the individual settled payments which arise from N_{ikl}^{paid} , $h = 1, \dots, N_{ikl}^{paid}$. Finally, we define

$$X_{ikl} = \sum_{h=0}^{N_{ikl}^{paid}} X_{ikl}^{(h)}, \quad (i, k) \in \mathcal{I}, \quad l = 0, \dots, m-1,$$

i.e. those payments originating from underwriting year i , which are reported after a delay of k and paid with an overall delay of $k+l$.

The aggregated incurred payments are then considered as unbiased estimators of $\sum_{l=0}^{m-1} X_{ikl}$. Technically, we model the expert knowledge as follows.

Expert knowledge:

Aggregated incremental incurred payments: $I_{\mathcal{I}} = \{I_{ik} : (i, k) \in \mathcal{I}\}$, with I_{ik} being

$$I_{ik} = \sum_{s=0}^k \sum_{l=0}^{m-1} E[X_{isl} | \mathcal{F}_{(i+k)}] - \sum_{s=0}^{k-1} \sum_{l=0}^{m-1} E[X_{isl} | \mathcal{F}_{(i+k-1)}], \quad (1)$$

where \mathcal{F}_h is an increasing filtration illustrating all the expert knowledge at calendar time h , which has influenced the case estimates.

In this manuscript, we will only consider best estimates (or pointwise estimates) and for this we can define the DCL model just under first-order moment assumptions, i.e. assumptions on the mean. We show that the classical chain ladder multiplicative structure holds under very general underlying dependencies on the mean. For fixed $i = 0, \dots, m$; $k, l = 0, \dots, m-1$, and $h = 1, \dots, N_{ikl}^{paid}$, the first-order moment conditions of the DCL model are formulated as follows.

- A1. The counts, N_{ik} , are random variables with mean having a multiplicative parametrization $E[N_{ik}] = \alpha_i \beta_k$, for given parameters α_i, β_j , under the identification $\sum_{k=0}^{m-1} \beta_k = 1$.
- A2. The number of payments, N_{ikl}^{paid} , representing the RBNS delay, are random variables with conditional mean $E[N_{ikl}^{paid} | N_{\mathcal{I}}] = N_{ik} \tilde{\pi}_l$, for given parameters $\tilde{\pi}_l$.
- A3. The individual payments sizes $X_{ikl}^{(h)}$ are random variables whose mean conditional on the number of payments and the counts is given by $E[X_{ikl}^{(h)} | N_{ikl}^{paid}, N_{\mathcal{I}}] = \tilde{\mu}_{kl} \gamma_i$, for given parameters $\tilde{\mu}_{kl}, \gamma_i$.

Assumption A1 is the classical chain ladder assumption applied on the counts triangle. See also Mack (1991). The main point hereby is the multiplicativity between underwriting year and reporting delay. Assumptions A2 and A3 are necessary to connect reporting delay, settlement delay and development delay - the main idea of DCL. See also Verrall et al. (2010) and Martínez-Miranda et al. (2011, 2012).

Note that the observed aggregated payments can be written as

$$X_{ij} = \sum_{l=0}^j X_{i,j-l,l} = \sum_{l=0}^j \sum_{h=1}^{N_{i,j-l,l}^{paid}} X_{i,j-l,l}^{(h)}.$$

And then, using assumptions A1 to A3, we can derive the mean of the aggregated payments conditional to the counts as follows:

$$\begin{aligned} \mathbb{E}[X_{ij}|N_{\mathcal{I}}] &= \mathbb{E}\left[\sum_{l=0}^j \sum_{h=1}^{N_{i,j-l,l}^{paid}} X_{i,j-l,l}^{(h)} | N_{\mathcal{I}}\right] \\ &= \sum_{l=0}^j \mathbb{E}\left[\sum_{h=1}^{N_{i,j-l,l}^{paid}} \mathbb{E}[X_{i,j-l,l}^{(h)} | N_{\mathcal{I}}, N_{i,j-l,l}^{paid}] | N_{\mathcal{I}}\right] \\ &= \sum_{l=0}^j \mathbb{E}[N_{i,j-l,l}^{paid} \tilde{\mu}_{j-l,l} \gamma_i | N_{\mathcal{I}}] \\ &= \gamma_i \sum_{l=0}^j N_{i,j-l} \tilde{\pi}_l \tilde{\mu}_{j-l,l}. \end{aligned}$$

Thus, the unconditional mean is given by

$$\mathbb{E}[X_{ij}] = \alpha_i \gamma_i \sum_{l=0}^j \beta_{j-l} \tilde{\mu}_{j-l,l} \tilde{\pi}_l. \quad (2)$$

Martínez-Miranda et al. (2012) discussed how to estimate the parameters in the model using the triangles $X_{\mathcal{I}}$ and $N_{\mathcal{I}}$. To this goal they introduce the restriction $\tilde{\mu}_{k,l} = \tilde{\mu}_l$ to identify the parameters. With such simplification we define

$$\mu = \sum_{l=0}^{m-1} \tilde{\pi}_l \tilde{\mu}_l \quad (3)$$

and $\pi_l = \tilde{\pi}_l \tilde{\mu}_l \mu^{-1}$, so that $\mu \pi_l = \tilde{\mu}_l \tilde{\pi}_l$ and therefore the unconditional mean of the payments becomes

$$\mathbb{E}[X_{ij}] = \alpha_i \gamma_i \mu \sum_{l=0}^j \beta_{j-l} \pi_l. \quad (4)$$

Equation (4) is the key in deriving the outstanding loss liabilities. These are the values of X_{ij} in the lower triangle and the tail (that is for $i = 1, \dots, m; j = 0, \dots, 2m - 1; i + j \geq m + 1$). In the sequel we will write all the DCL parameters, i.e. the parameters involved in the DCL model, as

$$(\alpha, \beta, \pi, \gamma, \mu) = (\alpha_1, \dots, \alpha_m, \beta_0, \dots, \beta_{m-1}, \pi_0, \dots, \pi_{m-1}, \gamma_1, \dots, \gamma_m, \mu).$$

In the next section, we will see that in a very natural way, we are able to distinguish between RBNS and IBNR claims. This is possible due to the separation of the development delay into the reporting delay, β , and the settlement delay, π .

3 Forecasting outstanding claims: the RBNS and IBNR reserves

To produce outstanding claims forecasts under the DCL model we need to estimate the DCL parameters. Section 4 below is devoted to this issue. In this section, we assume that the DCL parameters $(\alpha, \beta, \pi, \gamma, \mu)$ have been already estimated by $(\hat{\alpha}, \hat{\beta}, \hat{\pi}, \hat{\gamma}, \hat{\mu})$, and show how easily point forecasts of the RBNS and IBNR components of the reserve can be calculated. Using the notation of Verrall et al. (2010) and Martínez-Miranda et al. (2011), we consider predictions over the triangles illustrated in Figure 1.

$$\begin{aligned} \mathcal{J}_1 &= \{i = 2, \dots, m; j = 0, \dots, m - 1 \text{ with } i + j \geq m + 1\}, \\ \mathcal{J}_2 &= \{i = 1, \dots, m; j = m, \dots, 2m - 1 \text{ with } i + j \leq 2m - 1\}, \\ \mathcal{J}_3 &= \{i = 2, \dots, m; j = m, \dots, 2m - 1 \text{ with } i + j \geq 2m\}. \end{aligned}$$

The classical CLM produces forecasts over only \mathcal{J}_1 . So, if the CLM is being used, it is necessary to construct tail factors in some way. For example, this is sometimes done by assuming that the run-off will follow a set shape, thereby making it possible to extrapolate the development factors. In contrast, under the DCL model it is possible to provide also the tail over $\mathcal{J}_2 \cup \mathcal{J}_3$, just by using the underlying assumptions about the development.

Following Martínez-Miranda et al. (2012), we calculate the forecasts using the expression for the mean of the aggregated payments derived in (4) and replacing the unknown DCL parameters by their estimates. Note that the RBNS component arises from claims reported in the past and therefore, as Martínez-Miranda et al. (2012) discuss, it is possible to calculate the forecasts using the true observed value

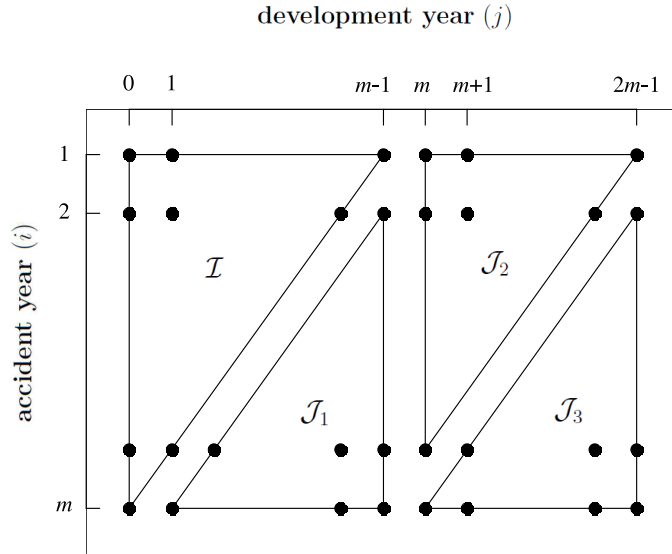


Figure 1: Index sets for aggregate claims data, assuming a maximum delay $m - 1$.

N_{ik} instead of their chain ladder estimates, $\hat{\alpha}_i, \hat{\beta}_k$, which are involved in the formulae (4). However, for the IBNR reserves, this is not possible since those values arise from claims reported in the future and then it is necessary to use all DCL parameters.

From these comments we define the RBNS component as follows, where we consider two possibilities depending on whether the estimates of N_{ik} are used or not.

$$\hat{X}_{ij}^{rbns(1)} = \sum_{l=i-m+j}^j N_{i,j-l} \hat{\pi}_l \hat{\mu} \hat{\gamma}_i, \quad (i, j) \in \mathcal{J}_1 \cup \mathcal{J}_2, \quad (5)$$

and

$$\hat{X}_{ij}^{rbns(2)} = \sum_{l=i-m+j}^j \hat{N}_{i,j-l} \hat{\pi}_l \hat{\mu} \hat{\gamma}_i, \quad (i, j) \in \mathcal{J}_1 \cup \mathcal{J}_2, \quad (6)$$

where $\hat{N}_{ik} = \hat{\alpha}_i \hat{\beta}_k$. In most cases, to shorten the notation, we will simply write \hat{X}_{ij}^{rbns} for the RBNS estimates. However, whenever it is necessary, we will state which version is taken. The IBNR component always needs all DCL parameters and it is calculated always as follows:

$$\hat{X}_{ij}^{ibnr} = \sum_{l=0}^{i-m+j-1} \hat{N}_{i,j-l} \hat{\pi}_l \hat{\mu} \hat{\gamma}_i, \quad (i, j) \in \mathcal{J}_1 \cup \mathcal{J}_2 \cup \mathcal{J}_3. \quad (7)$$

By adding up the RBNS and IBNR components we have the outstanding loss liabilities pointwise forecasts, which spread out on the forecasting sets $\mathcal{J}_1 \cup \mathcal{J}_2 \cup \mathcal{J}_3$ as follows.

$$\widehat{X}_{ij} = \begin{cases} \widehat{X}_{ij}^{rbns} + \widehat{X}_{ij}^{ibnr} & \text{if } (i, j) \in \mathcal{J}_1 \cup \mathcal{J}_2, \\ \widehat{X}_{ij}^{ibnr} & \text{if } (i, j) \in \mathcal{J}_3. \end{cases} \quad (8)$$

The outstanding liabilities per accident year are the row sums of forecasts \widehat{X}_{ij} above. For a fixed i , we write $\mathcal{J}_a(i) = \{j : (i, j) \in \mathcal{J}_a\}$, $a = 1, 2, 3$. Then the outstanding liabilities per accident year $i = 1, \dots, m$ are

$$\widehat{R}_i = \sum_{j \in \mathcal{J}_1(i) \cup \mathcal{J}_2(i)} \widehat{X}_{ij}^{rbns} + \sum_{j \in \mathcal{J}_1(i) \cup \mathcal{J}_2(i) \cup \mathcal{J}_3(i)} \widehat{X}_{ij}^{ibnr}. \quad (9)$$

4 Estimation of the parameters in the double chain ladder model

In the previous section we have described how to estimate the outstanding claims and thereby construct RBNS and IBNR reserves once the DCL parameters have been estimated. Now we describe how to get suitable estimators for the DCL parameters. Specifically we are going to explore four different estimations methods, all of them based on the chain-ladder algorithm.

4.1 The DCL method

The DCL method is the simplest method to derive the parameters in the DCL model. It is the original method proposed by Martínez-Miranda et al. (2012) which makes the following additional assumption on the payments triangle $X_{\mathcal{I}}$:

B1 The payments X_{ij} , with $i = 1, \dots, m$, and $j = 0, \dots, m - 1$, are random variables with mean having a multiplicative parametrization:

$$E[X_{ij}] = \tilde{\alpha}_i \tilde{\beta}_j, \quad \sum_{j=0}^{m-1} \tilde{\beta}_j = 1. \quad (10)$$

Then, merging the previously derived expression (4) and the above (10), we have that

$$\alpha_i \gamma_i \mu \sum_{l=0}^j \beta_{j-l} \pi_l = \tilde{\alpha}_i \tilde{\beta}_j,$$

and then the DCL parameters can be identified from the chain ladder parameters, $\tilde{\alpha}_i, \tilde{\beta}_j$, using the following equations:

$$\alpha_i \mu \gamma_i = \tilde{\alpha}_i, \quad (11)$$

$$\sum_{l=0}^j \beta_{j-l} \pi_l = \tilde{\beta}_j. \quad (12)$$

Even though many other micro-structure formulations might exist, the above model can be considered as a detailed specification of the classical chain ladder. Martínez-Miranda et al. (2012) discuss that if the RBNS component is estimated using (6), DCL completely replicates the results of CLM applied to the aggregated payments triangle. Thus, from the above two equations we can see how the underwriting and development chain ladder components are decomposed into separate components which capture the separate sources of delay inherent in the way claims emerge and the severity specification.

Now, the main idea to derive the DCL parameters is to estimate the chain ladder parameters $(\hat{\alpha}, \hat{\beta})$ and $(\hat{\tilde{\alpha}}, \hat{\tilde{\beta}})$ (cf. A1, B1) by applying the classical chain ladder algorithm on the counts triangle $N_{\mathcal{I}}$ and the payments triangle $X_{\mathcal{I}}$, respectively. Afterwards, the remaining DCL parameters, this is $(\hat{\gamma}, \hat{\mu}, \hat{\pi})$, can be calculated by simple algebra using (11) and (12).

For illustration of the chain ladder algorithm, we assume an incremental triangle (C_{ij}) (in our case this would be $N_{\mathcal{I}}$ or $X_{\mathcal{I}}$), and that we want to estimate its chain ladder parameters $(\hat{\alpha}, \hat{\beta})$. To apply the chain ladder algorithm, one has to transform the triangle (C_{ij}) into a cumulative triangle (D_{ij}) :

$$D_{ij} = \sum_{k=1}^j C_{ik}.$$

Then, the chain ladder algorithm can be applied on (D_{ij}) . It will produce estimates of development factors, λ_j , $j = 1, 2, \dots, m - 1$ which can be described by

$$\hat{\lambda}_j = \frac{\sum_{i=1}^{n-j+1} D_{ij}}{\sum_{i=1}^{n-j+1} D_{i,j-1}}.$$

These development factors can be converted into estimates of $(\bar{\alpha}, \bar{\beta})$ using the following identities which were derived in Verrall (1991).

$$\begin{aligned} \hat{\bar{\beta}}_0 &= \frac{1}{\prod_{l=1}^{m-1} \hat{\lambda}_l}, \\ \hat{\bar{\beta}}_j &= \frac{\hat{\lambda}_j - 1}{\prod_{l=j}^{m-1} \hat{\lambda}_l}, \\ \hat{\bar{\alpha}}_i &= \sum_{j=0}^{m-i} C_{ij} \prod_{j=m-i+1}^{m-1} \hat{\lambda}_j. \end{aligned}$$

Alternatively, analytical expressions for the estimators can also be derived directly (rather than using the chain ladder algorithm), and further details can be found in Kuang et al. (2009).

Once the chain ladder parameters $(\hat{\alpha}, \hat{\beta})$ and $(\hat{\tilde{\alpha}}, \hat{\tilde{\beta}})$ are derived, the settlement delay parameter, π , can be estimated just by solving the following linear system.

$$\begin{pmatrix} \hat{\tilde{\beta}}_0 \\ \vdots \\ \hat{\tilde{\beta}}_{m-1} \end{pmatrix} = \begin{pmatrix} \hat{\beta}_0 & 0 & \cdots & 0 \\ \hat{\beta}_1 & \hat{\beta}_0 & \ddots & 0 \\ \vdots & \ddots & \ddots & 0 \\ \hat{\beta}_{m-1} & \cdots & \hat{\beta}_1 & \hat{\beta}_0 \end{pmatrix} \begin{pmatrix} \pi_0 \\ \vdots \\ \pi_{m-1} \end{pmatrix}. \quad (13)$$

Let $\hat{\pi}$ denote the solution of (13).

Now we consider the estimation of the parameters involved in the means of individual payments. The model is technically over-parametrised since there are too many inflation parameters in (11). The simplest way to ensure identifiability is to set $\gamma_1 = 1$, and then the estimate of $\mu, \hat{\mu}$, can be obtained from

$$\hat{\mu} = \frac{\hat{\tilde{\alpha}}_1}{\hat{\alpha}_1}. \quad (14)$$

Using $\hat{\mu}$, the remaining estimates for $\gamma_i, i = 2, \dots, m$, are directly derived from (11).

The DCL estimation procedure described above has been implemented in the R-package DCL created by Martínez-Miranda et al. (2013c). Using this software, we have derived Table 1, which shows the values of $\hat{\alpha}, \hat{\beta}, \hat{\pi}$ and $\hat{\gamma}$, calculated from a real dataset included also in the DCL package.

4.2 Bornhuetter-Ferguson and double chain ladder: the BDCL method

The chain ladder and Bornhuetter-Ferguson (BF) methods are among the easiest claim reserving methods and, due to their simplicity, they are two of the most commonly used techniques in practice. Some recent papers on the BF method include Verrall (2004), Mack (2008), Schmidt and Zocher (2008), Alai et al. (2009) and Alai et al. (2010). The BF method introduced by Bornhuetter and Ferguson (1972) aims to address one of the well known weaknesses of CLM, which is the effect outliers can have on the estimates of outstanding claims. Especially the most recent underwriting years are the years with nearly no data and thus very sensitive to outliers. However, these recent underwriting years build the very major part of the outstanding claims. Hence, the CLM estimates of the outstanding liabilities might differ

i	k,l	$\hat{\alpha}(i)$	$\hat{\beta}(k)$	$\hat{\pi}(l)$	$\hat{\gamma}(i)$
1	0	1078	0.7599	0.0592	1.0000
2	1	1890	0.2097	0.3098	1.1173
3	2	2066	0.0189	0.2032	1.4947
4	3	2353	0.0064	0.1996	1.7461
5	4	3015	0.0016	0.1388	2.1075
6	5	3727	0.0010	0.0440	2.0936
7	6	5057	0.0009	0.0227	2.2495
8	7	6483	0.0007	0.0095	2.1250
9	8	7727	0.0003	0.0018	1.9028
10	9	7134	0.0001	0.0029	2.0197
11	10	7319	0.0001	0.0002	2.0704
12	11	6152	0.0000	0.0026	2.2666
13	12	5242	0.0001	0.0019	2.3157
14	13	6150	0.0000	0.0032	2.4747
15	14	7028	0.0001	-0.0002	2.3829
16	15	6725	0.0000	0.0013	2.8391
17	16	5260	0.0000	-0.0004	3.1815
18	17	5869	0.0000	0.0000	4.1747
19	18	5953	0.0000	0.0000	6.7501
		$\hat{\mu} = 2579$			

Table 1: DCL parameter estimates derived by the DCL method

fatally from the true (unknown) values.

Acknowledging this problem, the BF method incorporates prior knowledge from experts and is therefore more robust than the CLM method, which relies completely on the data contained in the run-off triangle $X_{\mathcal{I}}$.

In this section, we briefly summarize the Bornhuetter-Ferguson double chain ladder (BDCL) method introduced in Martínez-Miranda et al. (2013b), which mimics BF in the framework of DCL. The BDCL method starts with identical steps as DCL but instead of using the estimate of the inflation parameters, γ and μ , from the triangle of paid claims, $X_{\mathcal{I}}$, it deploys expert knowledge in the form of the incurred triangle, $I_{\mathcal{I}}$, to adjust the estimation of the sensitive inflation parameter, γ . This is done as follows. First we show that

$$E[I_{ik}] = \tilde{\alpha}_i \beta_k. \quad (15)$$

From the definition of I_{ik} in equation (1) we have that

$$E[I_{ik}] = \sum_{l=0}^{m-1} E[X_{ikl}] = \sum_{l=0}^{m-1} E \left[\sum_{h=0}^{N_{ikl}^{paid}} X_{ikl}^{(h)} \right]$$

Now we use Wald's identity and assumptions A1–A3 to deduce that

$$E[I_{ik}] = \sum_{l=0}^{m-1} E \left[N_{ikl}^{paid} \right] E \left[X_{ikl}^{(h)} \right] = \sum_{l=0}^{m-1} \alpha_i \beta_k \tilde{\pi}_l \tilde{\mu}_{kl} \gamma_i = \alpha_i \mu \gamma_i \beta_k = \tilde{\alpha}_i \beta_k,$$

where we have substituted $\mu = \sum_{l=0}^{m-1} \mu_{l,k} \tilde{\pi}_l$, as it was defined in (3). Hence, the incurred triangle, $I_{\mathcal{I}}$, has multiplicative mean and its underwriting year factor, $\tilde{\alpha}$, is identical to the one of the payments triangle, $X_{\mathcal{I}}$ (cf. (10)). However, its estimation is less sensitive to outliers since it incorporates all incurred claims via expert knowledge. We conclude that we can replace the payments triangle by the incurred payments triangle when we calculate estimates of the inflation parameters, γ, μ , in (11). Note that the severity mean, μ , is going to remain the same since the first rows of $X_{\mathcal{I}}$ and $I_{\mathcal{I}}$ are identical.

Summarized, the BDCL-method can be carried out as follows.

- *Step 1: Parameter estimation.*

Estimate the DCL parameters $(\alpha, \beta, \pi, \gamma, \mu)$ using the DCL method of Section 4.1 with the data in the triangles $N_{\mathcal{I}}$ and $X_{\mathcal{I}}$ and denote the parameter estimates by $(\hat{\alpha}, \hat{\beta}, \hat{\pi}, \hat{\gamma}, \hat{\mu})$.

Repeat this estimation using the DCL method but replacing the triangle of paid claims, $X_{\mathcal{I}}$, by the triangle of incurred data, $I_{\mathcal{I}}$. Keep only the resulting estimated inflation parameters, denoted by $\hat{\gamma}^{BDCL}$.

- *Step 2: BF adjustment.*

Replace the inflation parameters $\hat{\gamma}$ from the paid data by the estimate from the incurred triangle, $\hat{\gamma}^{BDCL}$.

From these two steps, the final BDCL estimates of the DCL parameters are $\hat{\alpha}, \hat{\beta}, \hat{\pi}, \hat{\gamma}^{BDCL}$ and $\hat{\mu}$.

Again, using the R-package DCL, we can derive the Figure 2 that shows the severity inflation estimates derived by DCL and BDCL. BDCL, with the incorporated expert knowledge, seems to stabilize the severity inflation in the most recent underwriting years while keeping the values in the other years. The result is a more realistic estimate correcting the DCL parameter $\hat{\gamma}_i$ exactly in its weakest point, that is in those years where the payments triangle, $X_{\mathcal{I}}$, has nearly no data. Again, those recent underwriting years contain the very major part of the outstanding liabilities.

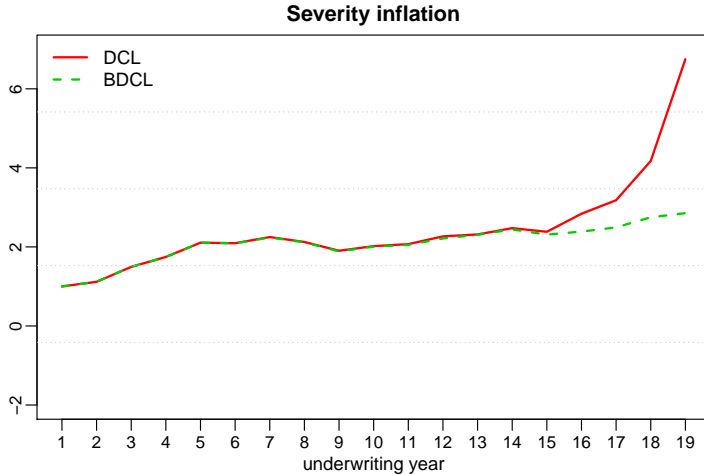


Figure 2: Plot of severity inflation estimates. DCL: $\hat{\gamma}_i$ (red), BDCL: $\hat{\gamma}_i^{BDCL}$ (green).

4.3 The PDCL method

In the last section, we have described a method which incorporates expert knowledge in form of the incurred triangle, $I_{\mathcal{I}}$. The values in $I_{\mathcal{I}}$ arise from case estimates for RBNS claims, developed in the case department of the insurance company, and claims which are already paid. Thus, if one subtracts these already paid claims (which are given via the payments triangle $X_{\mathcal{I}}$) from the incurred triangle, one can reconstruct the RBNS case estimates. However, as soon as this is done, it is obvious that these RBNS case estimates do not match with the RBNS estimates (5) and (6), using any DCL method (including BDCL). We conclude that the reserve department, using double chain ladder (and also chain ladder), calculates different RBNS estimates than those given by the case department. If this difference is huge, consultation between the case department and reserve department is necessary. The case department possesses expert knowledge on every single claim that is reported and they can use that knowledge of the claims in conjunction with their expertise to improve estimation. Below we introduce an alternative reserving method preserving the RBNS estimates given by the case department. We call this method RBNS-preserving double chain ladder (PDCL).

The first step is to construct a preliminary square $(S_{ij}), i = 1, \dots, m, j = 0, \dots, m - 1$, which will yield new estimates for the DCL parameters. The upper triangle of the square (i.e. $(i, j) \in \mathcal{I}$) should have the same entries as the payments triangle (X_{ij}) . The lower triangle (i.e. $(i, j) \in \mathcal{J}_1$) should consist of preliminary estimates of the outstanding loss liabilities. The outstanding loss liabilities comprise

an RBNS and an IBNR part (cf. (8)). However, we only want to estimate the IBNR component of these outstanding loss liabilities while taking the RBNS case estimates as the RBNS component. More precisely, we do the following. We take the BDCL parameter estimates $(\hat{\alpha}, \hat{\beta}, \hat{\pi}, \hat{\gamma}^{BDCL}, \hat{\mu})$ and use these parameters to estimate the RBNS component (\hat{X}_{ij}^{rbns}) and IBNR component (\hat{X}_{ij}^{ibnr}) using (6) and (7). As mentioned above, we want the RBNS estimate to be equal to the RBNS case estimates, which can only be reconstructed per accident year. For $i = 1, \dots, m$, they can be described as

$$X_i^{rbns.case.estimate} = \sum_{j=0}^{m-i} I_{ij} - \sum_{j=0}^{m-i} X_{ij}.$$

Hence, we define the RBNS preserving components

$$\hat{X}_{ij}^{rbns.pres} = \frac{X_i^{rbns.case.estimate}}{\sum_{j \in \mathcal{J}_1(i) \cup \mathcal{J}_2(i)} \hat{X}_{ij}^{rbns}} \hat{X}_{ij}^{rbns},$$

which verifies that

$$\sum_{j \in \mathcal{J}_1(i) \cup \mathcal{J}_2(i)} \hat{X}_{ij}^{rbns.pres} = X_i^{rbns.case.estimate}.$$

Thus we define the preliminary square (S_{ij}) as

$$S_{ij} = \begin{cases} X_{ij}, & \text{if } (i, j) \in \mathcal{I}, \\ \hat{X}_{ij}^{rbns.pres} + \hat{X}_{ij}^{ibnr}, & \text{if } (i, j) \in \mathcal{J}_1. \end{cases}$$

With this definition the payments square (S_{ij}) has multiplicative mean that is approximately $E[S_{ij}] \approx \tilde{\alpha}_i \tilde{\beta}_j$. In the upper triangle, \mathcal{I} , the approximation is exact since $E[S_{ij}] = E[X_{ij}]$. In the lower triangle, \mathcal{J}_1 , we first note that

$$E[\hat{X}_{ij}^{rbns.pres}] = E \left[\frac{X_i^{rbns.case.estimate}}{\sum_{j \in \mathcal{J}_1(i) \cup \mathcal{J}_2(i)} \hat{X}_{ij}^{rbns}} \hat{X}_{ij}^{rbns} \right] \approx E \left[\hat{X}_{ij}^{rbns} \right],$$

where we have used that \hat{X}_{ij}^{rbns} is a consistent estimator of the RBNS reserve. Then we have that, in \mathcal{J}_1 ,

$$E[S_{ij}] \approx E[\hat{X}_{ij}^{rbns} + \hat{X}_{ij}^{ibnr}] = E \left[\sum_{l=0}^j \hat{N}_{i,j-l} \hat{\pi}_l \hat{\mu} \hat{\gamma}_i \right] = E[\tilde{\alpha}_i \tilde{\beta}_j] \approx \tilde{\alpha}_i \tilde{\beta}_j,$$

using expressions (5) and (7), or similarly with (6) and (7), and the consistency of the chain ladder estimators. Therefore, we can use (S_{ij}) to completely replace $X_{\mathcal{I}}$ to estimate the DCL parameters (cf. (10)).

Note that in the BDCL method we were only able to balance the estimator of the inflation parameter $\tilde{\alpha}_i$ (cf. (15)). Again, while in the BDCL method, we use the expert knowledge to only adjust the inflation parameters. Here, we can take full advantage of the triangle $I_{\mathcal{T}}$ and also equalize the delay parameters.

Since (S_{ij}) has a multiplicative structure, we use the CLM idea to estimate $\tilde{\alpha}_i$ and $\tilde{\beta}_j$. We define

$$\hat{\tilde{\alpha}}_i^{PDCL} = \sum_{j=0}^{m-1} S_{ij}, \quad \hat{\tilde{\beta}}_j^{PDCL} = \frac{\sum_{i=1}^m S_{ij}}{\sum_{(i,j) \in \mathcal{I} \cup \mathcal{J}_1} S_{ij}}.$$

Exactly as in the previous sections, we can now apply (11) and (12) to derive the PDCL parameters $(\hat{\alpha}_i, \hat{\beta}_j, \hat{\pi}^{PDCL}, \hat{\gamma}^{PDCL*}, \hat{\mu}^{PDCL})$. Since this approach is still not RBNS preserving, we balance $\hat{\gamma}^{PDCL*}$ by defining a new scaled inflation factor estimate $\hat{\gamma}^{PDCL}$ such that

$$\hat{\gamma}_i^{PDCL} = \frac{X_i^{rbns.case.estimate}}{\sum_{j \in \mathcal{J}_1(i) \cup \mathcal{J}_2(i)} \hat{X}_{ij}^{rbns}},$$

where \hat{X}_{ij}^{rbns} is calculated with the parameters $(\hat{\alpha}_i, \hat{\beta}_j, \hat{\pi}^{PDCL}, \hat{\gamma}^{PDCL*}, \hat{\mu}^{PDCL})$ using (6).

4.4 The IDCL method

One could look at the methods BDCL and PDCL as belonging to the tradition of reserving literature using paid-incurred information, see Happ and Wüthrich (2013), Merz and Wüthrich (2013) and Happ et al. (2012). In the BDCL definition, we incorporate an additional triangle of incurred claims in order to produce a more stable estimate of the underwriting inflation parameter γ_i . The derived BDCL method becomes a variant of the Bornhuetter-Ferguson technique using prior knowledge contained in the incurred triangle. In the PDCL method, we use the additional information to get better IBNR estimates while preserving the RBNS estimates given by the claims department. But now, one natural question is whether one of those derived reserve estimates is the classical incurred chain ladder. However, this is not the case and neither the BDCL nor the IDCL method is replicating the results obtained by applying the classical CLM to the incurred triangle. Among practitioners, the incurred reserve seems to be more realistic for many datasets compared to the classical paid chain ladder reserve. From this motivation Agbeko et al. (2015) have introduced a new method to estimate the DCL parameters which completely replicates the chain ladder reserve from incurred data. The method is called incurred double chain ladder (IDCL) and it is easily defined just by rescaling the underwriting inflation parameter estimated from the DCL method. Specifically, a new scaled

inflation factor estimate $\widehat{\gamma}^{IDCL}$ is defined by

$$\widehat{\gamma}_i^{IDCL} = \frac{\widehat{R}_i^*}{\widehat{R}_i} \widehat{\gamma}_i, \quad (16)$$

where R_i^* are the outstanding loss liabilities per underwriting year as predicted by applying the classical CLM on the incurred data, $\widehat{\gamma}_i$ are the inflation parameters estimated using the DCL method and R_i are the outstanding loss liabilities per accident year calculated using the parameters estimated by the DCL method (see Section 4.1).

The final IDCL estimates of the DCL parameters are then $(\widehat{\alpha}, \widehat{\beta}, \widehat{\pi}, \widehat{\gamma}^{IDCL}, \widehat{\mu})$. With the new inflation parameter estimate, $\widehat{\gamma}^{IDCL}$, the outstanding liabilities derived by the IDCL estimates of the parameters completely replicate the CLM forecasts on the incurred triangle.

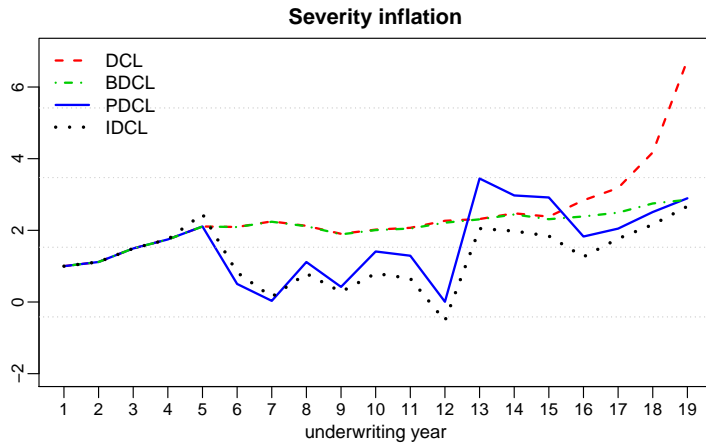


Figure 3: Plot of severity inflation estimates. DCL: $\widehat{\gamma}_i$ (red), BDCL: $\widehat{\gamma}_i^{BDCL}$ (green), PDCL: $\widehat{\gamma}_i^{PDCL}$ (yellow), IDCL: $\widehat{\gamma}_i^{IDCL}$ (blue).

Figure 3 shows a plot of the four severity inflation parameters derived by DCL, BDCL, PDCL and IDCL. The impression is that the rather rough adjustment of the PDCL and IDCL method leads to fluctuations in the estimate. These fluctuations are stronger in the less important and older underwriting years. It coincides with the following intuition. CLM on incurred triangle relies on the RBNS case estimates which are too small in older underwriting years. Thus, they lead to volatile estimates of the severity inflation in those years. However, the important most recent underwriting year estimates match the one from BDCL. In the most recent years one gets the impression that IDCL might underestimate the severity inflation. Table 2 shows the reserve estimates per underwriting year derived with the four different methods. In Figure 3, it is visualized that the underwriting inflation parameters

of PDCL and IDCL might be too volatile in the first five years. However, these first five years have nearly no impact and account for far less than 0.1% of the total loss liabilities estimates. The very most recent years on the other hand account for the very major part of the outstanding liabilities. The unrealistic severity inflation of the DCL method in the most recent underwriting year nearly doubles the ultimate estimates. More realistic results are derived when incorporating the expert knowledge in form of the incurred triangle, $I_{\mathcal{I}}$, using BDCL, PDCL or IDCL.

i	CLM	DCL	BDCL	IDCL	PDCL
1	0.0000	0.0000	0.0000	0.0000	0.0000
2	0.0000	0.0005	0.0003	0.0005	0.0003
3	0.0000	0.0001	-0.0003	0.0001	0.0037
4	0.0000	0.0007	-0.0014	0.0007	-0.0096
5	0.0173	0.0039	0.0151	0.0045	0.0365
6	0.0346	0.0309	0.0313	0.0122	0.0067
7	0.1381	0.1407	0.1408	0.0090	0.0039
8	0.2449	0.2485	0.2483	0.0927	0.0970
9	0.3522	0.3582	0.3563	0.0536	0.0642
10	0.3943	0.3818	0.3800	0.1507	0.2024
11	0.5524	0.5246	0.5206	0.1664	0.2597
12	0.6839	0.6309	0.6169	-0.1458	0.0299
13	1.0504	0.9764	0.9733	0.8648	1.2578
14	2.5361	2.5483	2.5164	2.0388	2.8155
15	5.7370	5.4483	5.2846	4.2095	6.2722
16	14.0889	15.4373	12.9824	6.8542	9.4736
17	21.0057	21.7407	17.0455	12.0924	13.5066
18	44.6877	44.4580	29.2840	23.0002	26.1823
19	98.9723	98.9722	41.8444	39.1522	42.6500
SUM	190.4957	191.9021	112.2385	88.5565	102.8528

Table 2: Outstanding loss liabilities per underwriting year in million

5 Model validation

This section describes the validation process for the four methods DCL, BDCL, IDCL and PDCL discussed in Section 4. We are able to compare all these reserving methods since double chain ladder provides micro structure information which produces reserve forecasts by expanding the payments triangle, X_{ij} , no matter which data is used. The validation process is based on back-testing data previously omitted while estimating the parameters for each method. See Agbeko et al. (2015) for more details about this validation technique.

Note that classical incurred chain ladder and chain ladder are ad hoc not comparable since reserves are calculated on different triangles with different delay meanings. Double chain ladder solves this problem.

Below, we have omitted the most recent calendar year and the four most recent calendar years, respectively (in all three available triangles). Therefore, since our dataset consists of $m = 19$ years, there are 18 and 60 cells, respectively, to be compared with the true values.

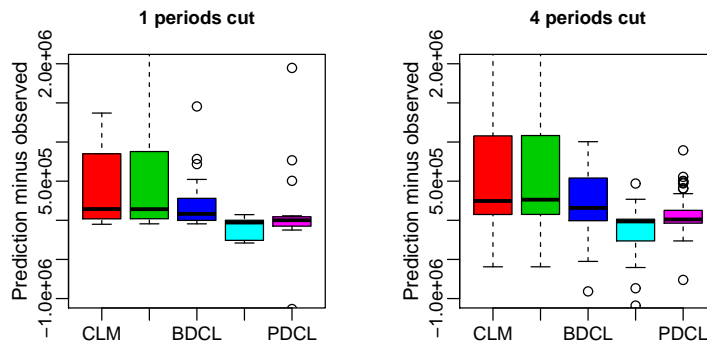


Figure 4: Box plot of the cell errors

Figure 4 shows two box plots of the respectively 18 and 60 errors calculated by taking the difference between estimated and true value. While we have also tried to omit different amounts of calendar years, the results were all similar and quiet clear. The three methods incorporating expert knowledge, that is BDCL, IDCL and PDCL, outperform the CLM and DCL method which only work with real data.

In the top panels of Figure 5, we have plotted the sum of the absolute cell errors

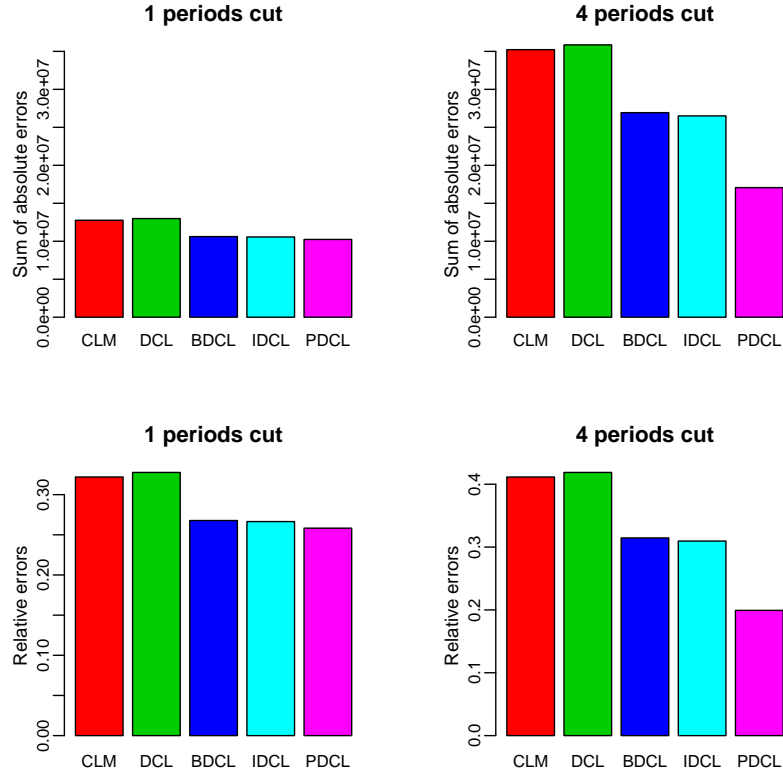


Figure 5: Bar plot for the sum of absolute cell errors and the relative errors.

(ℓ_1 error). That is,

$$\text{Sum of absolute cell errors} = \sum_{(i,j) \in \mathcal{B}_c} |\hat{X}_{ij} - X_{ij}|,$$

$$\mathcal{B}_c = \{(i, j) \mid i = 2, \dots, m - c; j = 0, \dots, m - c - 1; i + j = m - c + 1, \dots, m\},$$

where c is the number of recent calendar years omitted for back testing (here: 1 and 4).

The relative errors, that is

$$\frac{\text{Sum of absolute cell errors}}{\text{Sum of absolute true values}} = \frac{\sum_{(i,j) \in \mathcal{B}_c} |\hat{X}_{ij} - X_{ij}|}{\sum_{(i,j) \in \mathcal{B}_c} |X_{ij}|},$$

are shown in the bottom panels of Figure 5. The conclusion is the same as in the box plots. The estimates of BDCL, IDCL, PDCL are more accurate, while no great distinction can be made in between those winners.

6 Continuous Chain Ladder

This section is a motivating section. The message of this section is: when double chain ladder is extended, then it is also a contribution to granular reserving. This section gives a very short introduction of recent research interpreting the chain ladder model as a structured histogram. We do not provide theory here. We just give a taste of this new interpretation of chain ladder and its potential. Continuous chain ladder was first published in Martínez-Miranda et al. (2013a), where it is verified that the classical reserving problem really is a multivariate density estimation problem and that the classical chain ladder technique is a structured histogram version of this density estimator. While histograms are not too bad, it is well known from smoothing theory that one can do better by introducing more smoothing. Also, many actuaries use the chain ladder method without realizing that when they choose weekly, monthly, quarterly or yearly data, they are really picking a smoothing parameter which could be optimized via validation methodology. Natural extension of classical chain ladder methodology would be to smooth it via kernel smoother or some other smoothers. Hereby, one takes advantage on the vast literature of mathematical statistics, when deciding the amount of smoothing (week, month, quarter, year or something completely different) and perhaps allow one-self - in full consistency with the literature - to vary the smoothing according the difference of information at different underwriting years. Martínez-Miranda et al. (2013a) introduces these ideas and call the approach continuous chain ladder. In its simplest version, continuous chain ladder is based on simple kernel smoothers providing intuitive and natural improvement to histograms. Martínez-Miranda et al. (2013a, 2015) consider the multiplicative density model $f(x, y) = f_1(x)f_2(y)$, where f_1 is the density in underwriting direction (corresponding to α) and f_2 the density in development direction (corresponding to β). They estimate these densities via a least-squares or maximum likelihood criterion. Notice that one hereby estimates one-dimensional functions, not parameters. The aim is to estimate the density components $f_1(x)$ and $f_2(y)$ from observations of the two-dimensional density provided in the triangle \mathcal{I} (see definition in Section 2). Classical CLM considers histogram smoothers (with bins corresponding to the accident and delay periods) to estimate both f_1 and f_2 . The natural context for continuous chain ladder is of course micro claims data or granular data, however it can still be applied to aggregated data - the data traditionally used in reserving. Now, we illustrate how the continuous chain ladder method can be applied to the paid data described in the previous sections and compared with the classical chain ladder histogram. The input data for both approaches are quarterly-aggregated triangles for 76 quarters (this is 19 years). Figure 6 shows a histogram of the observed payments considering bins of 4 quarters (a

year). Such a histogram is the first step in classical CLM which leads to the predicted cash-flow plotted in Figure 7. Continuous chain ladder replaces this yearly histogram with a more efficient local linear kernel density estimator shown in the left panel of Figure 8. A functional projection of this two-dimensional density down on a multiplicative space derives the smooth cash-flow shown in the right panel of Figure 8. While the two approaches are quite similar, however, the chain ladder histogram approach results in piece-wise constant functions as the shown in Figure 9, while continuous chain ladder indeed results in the continuous functions shown also in Figure 9.

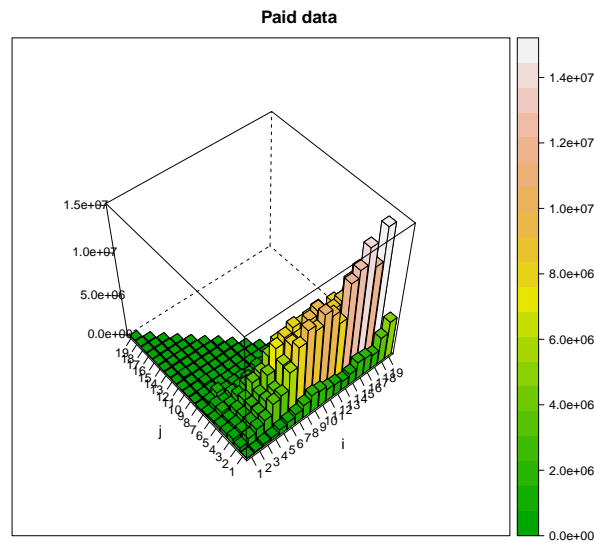


Figure 6: Histogram of the paid data using yearly bins: the starting point for classical CLM.

7 Conclusions

This paper has developed a new method called PDCL, which combines classical chain ladder methodology with expert knowledge via the double chain ladder methodology. While the preceding IDCL method is able to replicate the incurred chain ladder reserves, which are most commonly used in practice, the new PDCL method replicates the exact expert knowledge of the claims handling department via the estimated RBNS reserves. Among a number of advantages, both PDCL and IDCL methods inherit the good mathematical statistical properties of the double chain ladder methodology including a full statistical model and a stochastic cash flow interpretation. This in turn allows for a validation procedure cutting of recent payments and forecasting them. Such a validation procedure between paid chain ladder

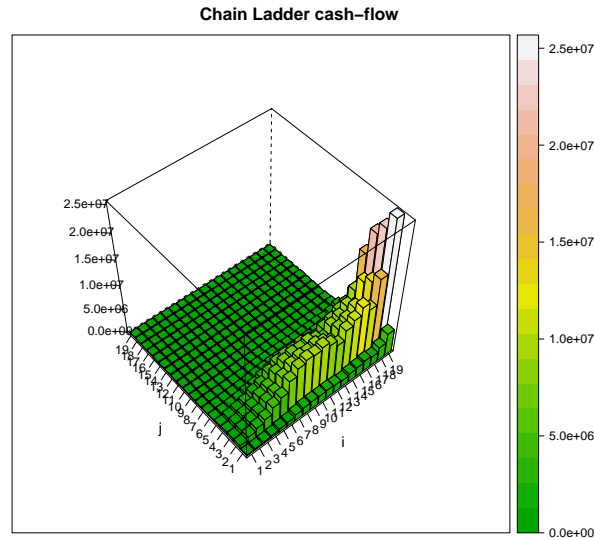


Figure 7: Classical chain ladder forecasts.

(or DCL) and incurred chain ladder (or IDCL) have hitherto not been available. We believe that our new results can upgrade the scientific quality of model selection in the perhaps most important single modelling process of a non-life insurance company. Now a scientifically based validation exist between DCL, BDCL, IDCL and PDCL, where the three latter are various version of combining expert knowledge with observed payment data. Finally, we have pointed out the close link between our methodology and granular reserving indicating that the insights of this paper could be transferred to granular reserving. Another recent trend is to use so called granular data or micro data for reserving, see Antonio and Plat (2014) for one of the most interesting recent contributions in that area.

Acknowledgements

The authors thank an anonymous reviewer for the careful reading of the paper and the helpful comments and suggestions. The third author gratefully acknowledges the financial support of the Spanish “Ministry of Economy and Competitiveness” by the grant MTM2013-41383P (European Regional Development Fund).

References

Agbeko, T.K., Hiabu, M., Martínez-Miranda , M. D., Nielsen, J. P. and Verrall, R. (2015). Validating the Double Chain Ladder Stochastic Claims Reserving Model.

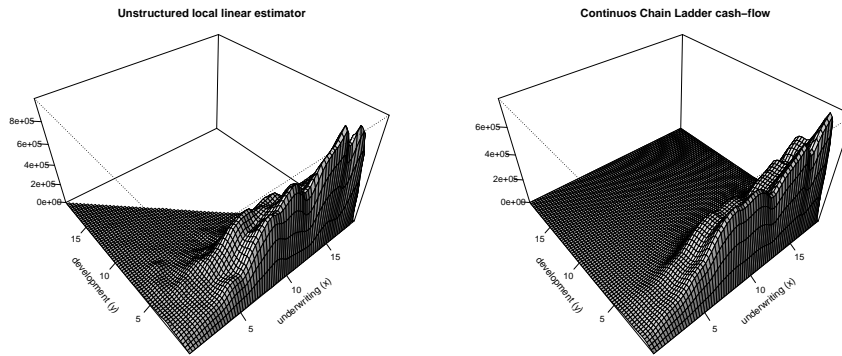


Figure 8: The Continuous chain ladder approach. Left panel shows the local linear kernel density estimator based on the observed data. Right panel shows the forecasts calculated assuming a multiplicative structure.

Variance, Advancing the Science of Risk **8**(2), 1–23.

Alai, D., Merz, M. and Wüthrich, M. V. (2009). Mean square error of prediction in the Bornhuetter-Ferguson claims reserving method. *Annals of Actuarial Science* **4**(1), 7–31.

Alai, D., Merz, M. and Wüthrich, M. V. (2010). Prediction uncertainty in the Bornhuetter-Ferguson claims reserving method: revisited. *Annals of Actuarial Science* **5**(1), 7–17.

Antonio, K. and Plat, R. (2014). Micro-level stochastic loss reserving in general insurance. *Scandinavian Actuarial Journal* **2014**(7), 649–669.

Bornhuetter, R. L. and Ferguson, R. E. (1972). The actuary and IBNR. *Casualty Actuarial Society Proceedings*, 181–195.

Happ, S. and Wüthrich, M.V. (2013). Paid-incurred chain reserving method with dependence modeling. *ASTIN Bulletin*, **43**(1), 1–20.

Happ, S., Merz, M. and Wüthrich, M.V. (2012). Claims development result in the paid-incurred chain reserving method. *Insurance: Mathematics and Economics* **51**(1), 66–72.

Kuang, D., Nielsen, B. and Nielsen, J. P. (2009). Chain Ladder as Maximum Likelihood Revisited. *Annals of Actuarial Science* **4**(1), 105–121.

Mack, T. (1991) A simple parametric model for rating automobile insurance or estimating IBNR claims reserves. *ASTIN Bulletin* **21**(1), 93–109.

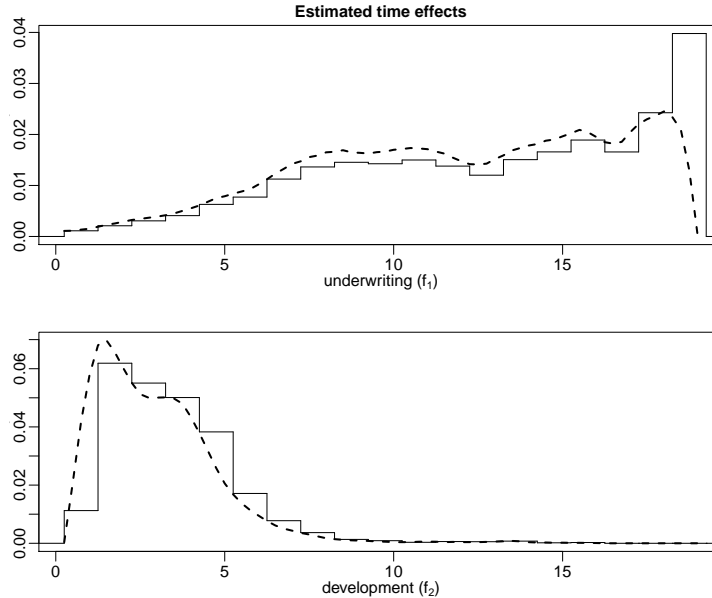


Figure 9: Estimated density components. Top panel shows the underwriting component and bottom panel the development component. The smooth kernel estimates derived by continuous chain ladder are compared with the histograms provided by classical CLM.

Mack, T. (2008) The prediction error of Bornhuetter-Ferguson. *ASTIN Bulletin* **38**(1), 87–103.

Mammen, E., Martínez-Miranda, M. D. and Nielsen (2015). In-sample forecasting applied to reserving and mesothelioma mortality. *Insurance: Mathematics and Economics* **61**, 76–86.

Martínez-Miranda, M. D., Nielsen, J. P. and Verrall, R. (2012). Double Chain Ladder. *ASTIN Bulletin* **42**(1), 59–76.

Martínez-Miranda, M. D., Nielsen, J. P. Sperlich, S. and Verrall, R. (2013a). Continuous Chain Ladder: Reformulating and generalising a classical insurance problem. *Expert Systems with Applications* **40**, 5588–5603.

Martínez-Miranda, M. D., Nielsen, J. P. and Verrall, R. (2013b). Double Chain Ladder and Bornhuetter-Ferguson. *North American Actuarial Journal* **17**(2), 101–113.

Martínez-Miranda, M. D., Nielsen, J. P. and Verrall, R. (2013c). R-package “DCL”: Claims Reserving under the Double Chain Ladder Model (v. 0.1.0, 25 October 2013). <http://cran.r-project.org/web/packages/DCL/index.html>.

- Martínez-Miranda, M.D., Nielsen, B., Nielsen, J.P. and Verrall, R. (2011) Cash flow simulation for a model of outstanding liabilities based on claim amounts and claim numbers. *ASTIN Bulletin* **41**(1), 107–129.
- Merz, M. and Wüthrich, M.V. (2013). Estimation of Tail Development Factors in the Paid-Incurred Chain Reserving Method. *Variance, Advancing the Science of Risk* **7**(1), 61–73.
- Verrall, R., Nielsen, J. P. and Jessen, A. (2010). Including Count Data in Claims Reserving. *ASTIN Bulletin* **40**(2), 871–887.
- Schmidt, K. D. and Zocher, M. (2008). The Bornhuetter-Ferguson Principle. *Variance, Advancing the Science of Risk* **2**(1), 85–110.
- Verrall, R., Nielsen, J. P. and Jessen, A. (2010). Including Count Data in Claims Reserving. *ASTIN Bulletin* **40**(2), 871–887.
- Verrall, R. (2004). Stochastic models for the Bornhuetter-Ferguson technique. *North American Actuarial Journal* **8**(3), 67–89.
- Verrall, R. (1991). Chain ladder and Maximum Likelihood. *Journal of the Institute of Actuaries* **118**, 489–499.