

# THE UNIVERSITY OF WARWICK

## Original citation:

Modesti, Pietro Amedeo, Reboldi, Gianpaolo, Cappuccio, Francesco P., Agyemang, Charles, Remuzzi, Giuseppe, Rapi, Stefano, Perruolo, Eleonora and Parati, Gianfranco. (2016) Panethnic differences in blood pressure in Europe : a systematic review and meta-analysis. PLoS One, 11 (1). e0147601.

<http://dx.doi.org/10.1371/journal.pone.0147601>

## Permanent WRAP url:

<http://wrap.warwick.ac.uk/76054>

## Copyright and reuse:

The Warwick Research Archive Portal (WRAP) makes this work of researchers of the University of Warwick available open access under the following conditions.

This article is made available under the Creative Commons Attribution 4.0 International license (CC BY 4.0) and may be reused according to the conditions of the license. For more details see: <http://creativecommons.org/licenses/by/4.0/>

## A note on versions:

The version presented in WRAP is the published version, or, version of record, and may be cited as it appears here.

For more information, please contact the WRAP Team at: [publications@warwick.ac.uk](mailto:publications@warwick.ac.uk)

warwick**publications**wrap  
  
highlight your research

<http://wrap.warwick.ac.uk>

RESEARCH ARTICLE

# Panethnic Differences in Blood Pressure in Europe: A Systematic Review and Meta-Analysis

Pietro Amedeo Modesti<sup>1</sup>\*, Gianpaolo Reboldi<sup>2</sup>, Francesco P. Cappuccio<sup>3</sup>, Charles Agyemang<sup>4</sup>, Giuseppe Remuzzi<sup>5</sup>, Stefano Rapi<sup>1</sup>, Eleonora Perruolo<sup>1</sup>, Gianfranco Parati<sup>6</sup>, ESH Working Group on CV Risk in Low Resource Settings<sup>¶</sup>

**1** Dept of Medicina Sperimentale e Clinica, University of Florence, Florence, Italy, **2** Dept of Medicine, University of Perugia, Perugia, Italy, **3** University of Warwick, Warwick Medical School, and University Hospitals Coventry & Warwickshire NHS Trust, Coventry, United Kingdom, **4** Dept of Public Health, Academic Medical Centre, University of Amsterdam, Amsterdam, Netherlands, **5** IRCCS - Istituto di Ricerche Farmacologiche Mario Negri, Bergamo, Dept. of Medicine, Unit of Nephrology, Dialysis and Transplantation, Azienda Ospedaliera Papa Giovanni XXIII, Bergamo, Italy, **6** Dept of Health Sciences, University of Milano-Bicocca, Dept. of Cardiology, S. Luca Hospital, IRCCS Istituto Auxologico, Milano, Italy

\* These authors contributed equally to this work.

¶ Membership of the ESH Working Group on CV Risk in Low Resource Settings is provided in the Acknowledgments.

\* [pamodesti@unifi.it](mailto:pamodesti@unifi.it)



**OPEN ACCESS**

**Citation:** Modesti PA, Reboldi G, Cappuccio FP, Agyemang C, Remuzzi G, Rapi S, et al. (2016) Panethnic Differences in Blood Pressure in Europe: A Systematic Review and Meta-Analysis. PLoS ONE 11(1): e0147601. doi:10.1371/journal.pone.0147601

**Editor:** Flávio Danni Fuchs, Hospital de Clínicas de Porto Alegre, BRAZIL

**Received:** January 26, 2015

**Accepted:** November 24, 2015

**Published:** January 25, 2016

**Copyright:** © 2016 Modesti et al. This is an open access article distributed under the terms of the [Creative Commons Attribution License](https://creativecommons.org/licenses/by/4.0/), which permits unrestricted use, distribution, and reproduction in any medium, provided the original author and source are credited.

**Data Availability Statement:** All relevant data are within the paper and its Supporting Information files.

**Funding:** The authors have no support or funding to report.

**Competing Interests:** The authors have declared that no competing interests exist.

**Abbreviations:** SSA, Sub Saharan Africa; SA, South Asians; EU, Europeans; SBP, Systolic Blood Pressure; DBP, Diastolic Blood Pressure; BP, Blood Pressure; CV, Cardiovascular; UK, United Kingdom; BMI, Body Mass Index; HSE, Health Survey for England; RR, Response Rate; PS, Prospective

## Abstract

### Background

People of Sub Saharan Africa (SSA) and South Asians(SA) ethnic minorities living in Europe have higher risk of stroke than native Europeans(EU). Study objective is to provide an assessment of gender specific absolute differences in office systolic(SBP) and diastolic (DBP) blood pressure(BP) levels between SSA, SA, and EU.

### Methods and Findings

We performed a systematic review and meta-analysis of observational studies conducted in Europe that examined BP in non-selected adult SSA, SA and EU subjects. Medline, PubMed, Embase, Web of Science, and Scopus were searched from their inception through January 31st 2015, for relevant articles. Outcome measures were mean SBP and DBP differences between minorities and EU, using a random effects model and tested for heterogeneity. Twenty-one studies involving 9,070 SSA, 18,421 SA, and 130,380 EU were included. Compared with EU, SSA had higher values of both SBP (3.38 mmHg, 95% CI 1.28 to 5.48 mmHg; and 6.00 mmHg, 95% CI 2.22 to 9.78 in men and women respectively) and DBP (3.29 mmHg, 95% CI 1.80 to 4.78; 5.35 mmHg, 95% CI 3.04 to 7.66). SA had lower SBP than EU(-4.57 mmHg, 95% CI -6.20 to -2.93; -2.97 mmHg, 95% CI -5.45 to -0.49) but similar DBP values. Meta-analysis by subgroup showed that SA originating from countries where Islam is the main religion had lower SBP and DBP values than EU. In multivariate meta-regression analyses, SBP difference between minorities and EU populations, was influenced by panethnicity and diabetes prevalence.

Study; CSS, Cross Sectional Survey; CS, Cohort Study; FB, Factory Based; GPL, General Practices List; HC, Health Centre; PL, Population List; OS, Office staff; IC, Immigrant centres; NL, The Netherlands; NO, Norway; I, Italy; CB, Country of Birth; NR, Not Reported; N, Name; SR, Self-Reported; RZ, Random Zero manometer; A, Automated sphygmomanometer; M, Men; W, Women.

## Conclusions

1) The higher BP in SSA is maintained over decades, suggesting limited efficacy of prevention strategies in such group in Europe; 2) The lower BP in Muslim populations suggests that yet untapped lifestyle and behavioral habits may reveal advantages towards the development of hypertension; 3) The additive effect of diabetes, emphasizes the need of new strategies for the control of hypertension in groups at high prevalence of diabetes.

## Introduction

The high rate of influx and settlement of migrant populations into Europe is changing the dynamics of regional population growth, and may pose important challenges for public health and clinical care [1]. Both subjects originating from Sub Saharan Africa (SSA) [2] and South Asia (SA) [3] were found to have higher risk of stroke [4,5] and end-stage renal failure [5,6] than native Europeans (EU). SA subjects living in Europe also have elevated risk of coronary heart disease [5,7,8]. Understanding the reasons behind the excess of cardiovascular (CV) risks is crucial for addressing ethnic inequalities in health also because the ageing of migrant populations carries the risk of overburdening the majority of the healthcare systems in the European Union that offer free of charge access to emergency medical care [9]. In the USA, studies on ethnic variation in health risk reveal a major confounding effect by socio-economic status [10]. In Europe, ethnic differences in CV events persist after adjusting for income differences, suggesting that other variables might play a role [11]. Detection and control of risk factors such as hypertension and diabetes, identification of potential drivers predisposing ethnic minority groups to CV disease, and recognizing at risk sub-populations may be crucial to build effective prevention strategies [12,13]. Currently only four European Union member states (Netherlands, France, Portugal and Spain) cover the costs of long-term medical care for chronic disease in undocumented migrants [1,14]. However, previous reviews collecting UK based studies data were not pooled making it difficult to estimate actual differences between the groups.

As a major CV risk factor, hypertension needs to be carefully managed. An early review showed higher blood pressure (BP) levels in SSA than in EU [15]. Reductions in salt intake was reported to produce greater BP decreases in African-Americans [16,17] and a national strategy to reduce population levels of salt intake was finally introduced in the United Kingdom (UK) in 2003 [18,19].

Regarding the SA population, a systematic review [20] showed that BP levels are lower in Bangladeshis followed by Pakistanis and Indians, than in EU. The close relationship between diabetes and obesity has more recently driven the attention also to body weight reduction [21]. However, the potential contribution of other associated risk factors and behaviours was not previously investigated

The goal of this study was to perform a systematic review and meta-analysis of studies comparing BP levels of EU with those of SSA and SA with the aims of 1) estimating the absolute BP differences among panethnic subgroups, 2) assessing whether such differences are affected by the year of the study; and finally 3) assessing the potential contribution of other associated risk factors and behaviours. The term panethnicity usually refers to a collectivity consisting of distinct ethnic groups and cultures that experience themselves as having something in common [22] and was adopted to stress the limitations of grouping together, and collective labelling SSA and SA subjects of various separate ethnicities.

## Materials and Methods

### Literature review and data sources

Searches of MEDLINE, PubMed, EMBASE, Web of Science, and Scopus databases, from their inception to January 31st, 2015 without language restriction, were undertaken. The search terms 'Asians', 'South Asians', 'Caribbean and Asian', 'Indians', 'East Indian', 'Pakistanis', 'Bangladeshis', 'Africans', 'African Caribbean', 'West Africans', 'Black', 'racial stock', and 'ethnic minority groups' were combined with blood pressure, hypertension and Europe. Additionally, we hand-searched reference lists, screened citations of articles of interest and approached an international panel of experts in the field to identify additional published studies. Studies that were not published as full reports, such as conference abstracts and letters to the editor, were excluded.

### Inclusion criteria

There were no language restrictions. Studies were eligible for inclusion if they 1) compared BP levels in subjects originating from SSA or SA countries and living in Europe with those of EU; 2) reported office systolic(SBP) and diastolic BP(DBP) values with standard deviation, standard error, or 95% confidence intervals(CI); 3) enrolled adult individuals (age  $\geq 16$  years) at random from the general population.

### Data abstraction and assessment of study quality

Data were extracted from each paper with customised data extraction forms. Attempts were made to retrieve missing data after contacting the corresponding author. Missing variance measures were imputed using published formulas [23]. Three reviewers independently assessed the risk of bias of each of the included studies and discussed their assessments to achieve consensus. A score for quality, modified from the Newcastle-Ottawa scale, was used to assess appropriateness of research design, recruitment strategy, response rate, representativeness of sample, objectivity/reliability of outcome determination, power calculation provided, and appropriate statistical analyses. Score disagreements were resolved by consensus and a final agreed-upon rating was assigned to each study. We used the PRISMA (Preferred Reporting Items for Systematic reviews and Meta-Analyses) statement for reporting systematic reviews and meta-analyses as a guide for this study (S1 Text) [24], including the preparation of a protocol and analysis plan (S2 Text).

### Statistical analysis

Descriptive data are reported as means with 95% CI or median and range. Main outcome measures were the mean differences in SBP and DBP between SSA, SA, and EU. Data were pooled using a random-effect model and the  $I^2$  statistics was used to assess heterogeneity, where  $I^2 > 50\%$  was considered as evidence of significant heterogeneity [25]. In addition, we used Galbraith's radial plots to visualize heterogeneity and the contribution of each study to the overall estimate [26]. Pre-specified subgroups included panethnic groups (SSA, SA, and EU) and gender. A generalised Q-statistics was used to evaluate differences among subgroups [27]. The potential unit-of-analysis issue related to multiple comparisons from a single study population (e.g. multi-ethnic studies where the EU control group was used more than once) was addressed by splitting the variance of the EU controls across the available comparisons [23].

Sources of heterogeneity were further investigated by random effect meta-regression analyses [25]. Potential effect modifiers, besides panethnicity and gender, included the study year and the differences in diabetes prevalence, age, body mass index(BMI), and smoking

prevalence. Differences were calculated by subtracting the reported values of minority groups from those of EU populations. Studies including SA subjects were also categorized according to the country of origin and the main religion in the country of origin (Islam for Pakistan and Bangladesh; other for India, Sri Lanka, and Suriname)[28].

Model fit was assessed using the proportion of the between-study variance explained by the covariates (adjusted  $R^2$ ), along with a significance test for each covariate. The proportion of between-study variance explained by the covariates was calculated by comparing the residual between-study variance in the final model ( $\tau^2$ ) with its value in a model without covariates ( $\tau_0^2$ ). The adjusted  $R^2$ , the relative reduction in the between-study variance, was calculated according to the formula:  $R_{adj}^2 = \frac{(\tau_0^2 - \tau^2)}{\tau_0^2}$  [29]. To control for false-positive findings (type I error), when performing meta-regression with multiple covariates, we used the model F value and its statistical significance to assess whether there was evidence for an association of any of the covariates with the outcome, and a test based on random permutations to calculate multiplicity adjusted P value [29,30]. Publication bias was assessed by visual inspection of the funnel and regression test. To assess the impact of potentially “missing” studies on pooled estimates, sensitivity analyses were conducted using the Duval and Tweedie nonparametric “trim and fill” method using both the  $L_0$  and  $R_0$  estimator [31,32].

Two-sided tests for overall effects were considered significant at  $p \leq 0.05$ . Statistical analyses were performed using STATA 13 (StataCorp LP, College Station, Texas, USA) and R (R Foundation for Statistical Computing, Vienna, Austria).

## Results

### Characteristics of the included studies

A total of 23 studies met inclusion criteria and were included in our meta-analysis (Fig 1).

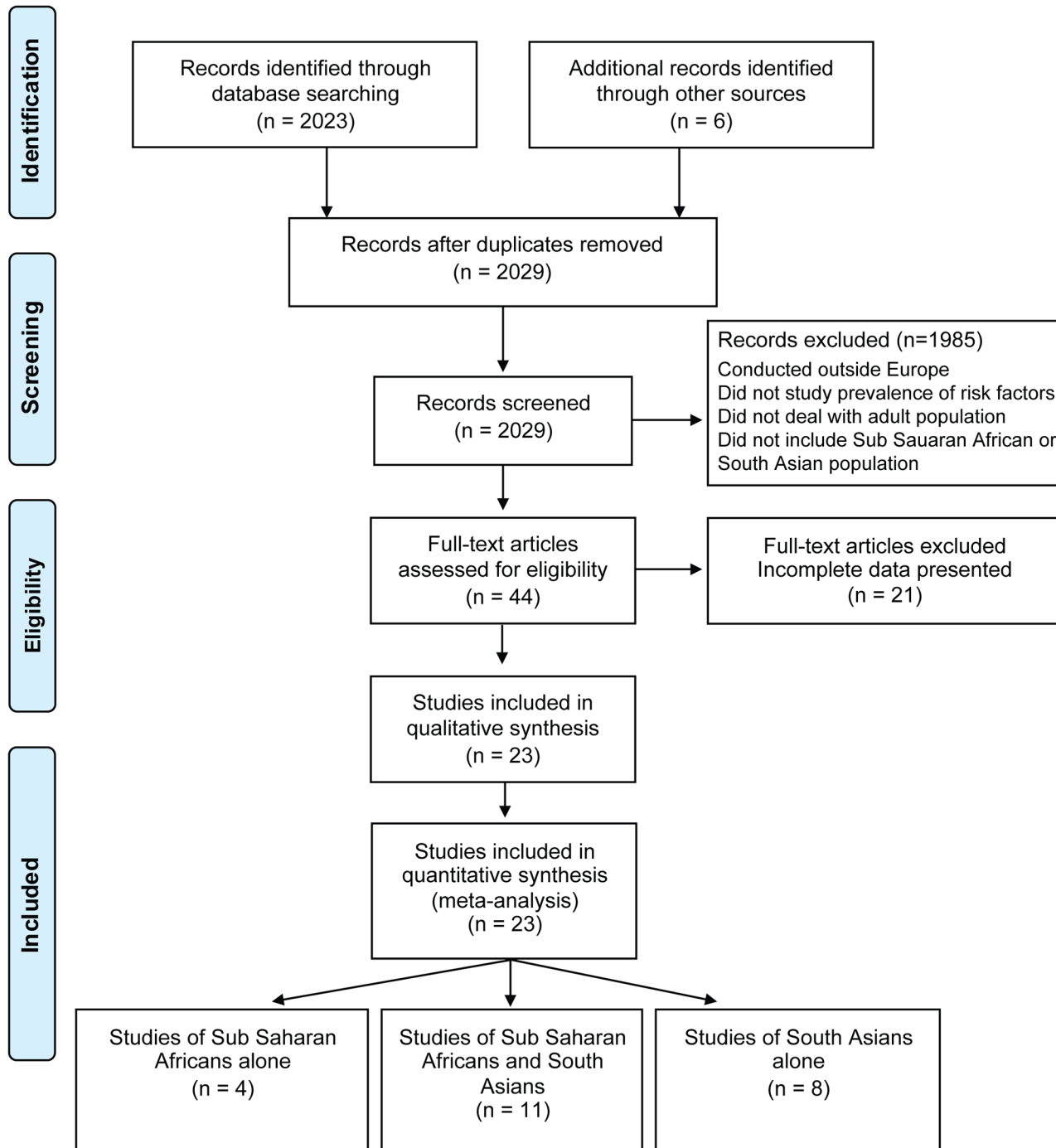
The main characteristics of included studies are reported in Table 1. Data on SSA were provided in fifteen studies [33–47] (Table 2), nineteen studies providing data on SA [34,36,37,39,41,44–57] (Table 3). Some of these studies involved several groups of individuals, so that a total of 17 and 26 comparison groups were available for analysis for SSA and SA respectively. Sample size ranged from 115 to 59,952 participants (median, 1,578), with a total of 9,070 SSA (3,894 men and 5,176 women), 18,421 SA (10,021 men and 8,400 women), and 130,380 EU (67,768 men and 65,612 women). The percentage of men ranged from 32% to 100% for SSA (median, 44%), from 41% to 100% for SA (median, 51%), and from 44% to 100% for EU (median, 51%).

### Panethnicity and blood pressure

SSA had higher BP values than EU subjects for both SBP (3.38 mmHg; 95% CI 1.28 to 5.48 in men; 6.00 mmHg, 95% CI 2.22 to 9.78 mmHg in women) (Fig 2) and DBP (3.29 mmHg, 95% CI 1.80 to 4.78 mmHg in men; 5.35 mmHg, 95% CI 3.04 to 7.66 in women) (Fig 3).

On the contrary, SA had SBP values lower than EU (-4.57 mmHg, 95% CI -6.20 to -2.93 mmHg in men; -2.97 mmHg, 95% CI -5.45 to -0.49 mmHg in women) (Fig 2). They also tended to have lower, albeit not significantly, DBP values (-0.56 mmHg, 95% CI -1.71 to 0.58 in men; -0.13 mmHg, 95% CI -1.12 to 0.87 in women) (Fig 3). Effect sizes of individual studies on South Asians are reported in S1 Fig (for systolic BP) and in S2 Fig (for diastolic BP). Effect sizes of individual studies on Sub-Saharan Africans are reported in S3 Fig (for systolic BP) and in S4 Fig (for diastolic BP).

In these analyses, however, we found evidence of statistical heterogeneity among studies. The I-squared statistic ranged between 90.3% and 96.1% for SBP, and between 90.7% and



**Fig 1. Flow chart of the selection process.** Flow chart of the selection process according to the PRISMA Statement [24].

doi:10.1371/journal.pone.0147601.g001

96.2% for DBP. Notably, gender did not contribute to heterogeneity within subgroups. A sensitivity analysis, excluding one study at the time, neither reduced heterogeneity nor affected the overall estimates to a noticeable extent (S1 and S2 Tables). Visual inspection of the funnel plot (S5 Fig), and regression tests of funnel plot asymmetry ( $p = 0.31$  and  $p = 0.72$  for SBP and

**Table 1. Characteristics of studies included in analysis.**

Author [Ref]	Study Design	Time of study	Sampling frame	Country	Study populations (n =)	Indicator of panethnicity	Age range (years)	Method of BP measurement (device)	RR (%)	Gender	Quality score
Meade et al.[39]	PS	1977	FB	UK	EU(412), SSA(141)	CB	18–49	Not given	NR	M/W	7
Sever et al.[40]	CSS	1978	FB	UK	EU(62), SSA(53)	NR	24–58	A(Bosomat)	55	M/W	7
Haines et al.[30]	CSS	1983–1986	GPL	UK	EU(936), SSA(415)	CB	17–70	RZ	61	M/W	10
McKeigue et al.[46]	CSS	1985–1986	GPL	UK	EU(132), SA(121)	SR	35–69	RZ	81	M/W	10
Cruickshank et al.[31]	CSS	NR	GPL	UK	EU(101),SSA(106), SA(107)	SR	45–74	RZ	77	M/W	8
McKeigue et al.[36]	CSS	1988–1990	FB, GPL	UK	EU(1761),SSA(209),SA(1712)	N,CB	45–74	RZ	66 EU; 62 SA; 66 SSA	M/W	10
Knight et al.[47]	CSS	1989	FB	UK	EU(156), SA(96)	N,SR	20–65	A(Copal)	71 EU; 83 SSA	M	10
Chaturvedi et al.[32]	CSS	NR	GPL	UK	EU(585), SSA(581)	SR	40–69	RZ	58	M/W	10
Knight et al.[48]	CSS	NR	FB	UK	EU(160), SA(128)	N,SR	20–65	A(Copal)	71 EU; 83 SSA	M	10
Simmons et al.[52]	CSS	1986–1989	PL	UK	EU(5508), SA(4395)	CB	>20	RZ	NR	M/W	10
Cappuccio et al.[33]	CSS	1994–1996	GPL	UK	EU(524),SSA(549), SA(505)	SR	40–59	A (Arteriosonde)	64	M/W	10
Bhopal et al.[49]	CSS	1993/94 EU; 1995/97 SA	GPL	UK	EU(825), SA(684)	CB	25–74	Manual	64 EU; 67 SA	M/W	10
HSE 1999 [43]	CSS	1999	-	UK	EU(11884),SSA(719),SA(1973)	CB	>16	-	NR	M/W	10
Whitty et al.[41]	CS	1985–1988	OS	UK	EU(8973), SSA(360), SA(577)	SR	35–56	RZ	73	M/W	10
Lane et al.[34]	CS	1979/86 and 1996/97	FB	UK	EU(2067), SSA(394), SA(226)	SR	30–60	RZ	NR	M/W	9
HSE 2004. [47]	CSS	2004	-	UK	EU(9183), SSA(675), SA(1197)	CB	>16	-	NR	M/W	10
Agyemang et al.[42]	CSS	2001–2003	PL	NL	EU(508), SSA(581), SA(294)	SR	35–60	A(Omron M-4)	61	M/W	10
Lyratzopoulos et al.[50]	CSS	1989–1999	PL	UK	EU(9995), SA(9990)	N	35–60	Manual	NR	M/W	9
Glenday et al.[53,54]	CSS	2002	PL	NO	EU(11027), SA(1976)	CB	31–60	A(DINAMAP)	40	M/W	10
Gualdi-Russo et al.[38]	CSS	2000–2002	IC	I	EU(104), SSA(44), SA(78)	CB	17–65	Manual	67	M	7
Gray et al.[51]	CSS	2004–2007	GPL	UK	EU(4688), SA(1353)	SR	40–75	A(Omron)	22	M/W	9
Rabanal et al.[58]	CSS	1994–2003	PL	NO	EU(58698), SSA(183), SA(1071)	CB	40–65	-	58	M/W	10
Agyemang et al.[59]	PS	2011	PL	NL	EU(2097), SSA(4060), SA(2278)	CB	18–70	A(Microlife)	63	M/W	10

BP = Blood Pressure; RR = Response Rate; PS = prospective study; CSS = Cross Sectional Survey; CS = Cohort Study; FB = Factory based; GPL = General practices list; HC = Health centre; PL = Population List; OS = Office staff; IC = Immigrant centres; UK = United Kingdom; NL = The Netherlands; NO = Norway; I = Italy; EU = Europeans; SSA = Sub-Saharan Africans (including populations also defined as Africans, Afro-Caribbeans, and Black Caribbeans); SA = South Asians; CB = Country of birth; NR = Not Reported; N = Name; SR = Self-reported; RZ = random zero manometer; A = automated sphygmomanometer; M = men; W = Women.

doi:10.1371/journal.pone.0147601.t001

**Table 2. Age, mean prevalence of diabetes mellitus, body mass index, and smoking habit by gender among Sub-Saharan Africans and native Europeans.**

Author [Ref]	Age (range)	MEN								WOMEN							
		Age (mean)		Diabetes (%)		BMI (kg/m <sup>2</sup> )		Smokers (%)		Age (mean)		Diabetes (%)		BMI (kg/m <sup>2</sup> )		Smokers (%)	
		SSA	EU	SSA	EU	SSA	EU	SSA	EU	SSA	EU	SSA	EU	SSA	EU	SSA	EU
Meade et al.[42]	18–49	35.5	34.7	-	-	24.5	24.4	47.9	47.9	38.6	36.9	-	-	27.4	23.6	7.3	59.0
Sever et al.[43]	24–58	42.0	42.0	-	-	-	-	-	-	44.0	43.0	-	-	-	-	-	-
Haines et al.[33]	17–70	41.4	42.4	-	-	25.0	25.3	41.4	46.3	36.5	40.9	-	-	25.8	25.2	27.5	45.6
Cruickshank et al. [34]	45–74	57.0	62.2	41.0*	4.0*	26.0	26.2	-	-	56.6	60.3	13.0*	2.0*	29.1	26.3	-	-
McKeigue et al.[39]	40–69	-	-	14.6*	4.8*	26.3	25.9	-	-	-	-	-	-	-	-	-	-
Chaturvedi et al.[35]	40–64	55.0	55.0	12.9*	6.5*	26.0	26.4	30.0	37.0	55.0	55.0	17.7*	4.0*	29.1	26.0	8.0	35.0
Cappuccio et al.[36]	40–59	51.1	49.8	18.0*	7.0*	26.4	25.8	18.6	39.6	51.1	49.8	15.0*	5.0*	29.3	26.1	9.2	33.3
Whitty et al.[44]	35–56	45.8	43.8	5.0*	2.0*	-	-	17.0	15.0	45.8	43.8	5.0*	2.0*	-	-	9.0	26.0
HSE 1999 [46]	>16	43.1	45.0	7.8	3.3	27.1	26.6	35.0	27.0	41.3	45.4	7.9	2.5	28.0	26.4	25.0	27.0
Lane et al.[37]	>30	44.6	44.1	-	-	26.2	25.9	50.0	40.6	45.0	43.9	-	-	28.7	25.6	10.9	49.2
HSE 2004 (BC) [47]	>16	45.2	47.4	10.0**	4.3**	27.1	27.1	25.0	24.0	43.3	47.2	8.4**	3.4**	28.0	26.8	24.0	23.0
HSE 2004 (BA) [47]	>16	45.2	47.4	5.0**	4.3**	26.4	27.1	21.0	24.0	36.4	47.2	2.1**	3.4**	28.8	26.8	10.0	23.0
Agyemang et al.[45]	35–60	44.1	48.1	11.9	7.8	26.4	26.2	55.5	54.0	43.4	47.4	12.8	5.8	29.4	26.1	-	-
Gualdi-Russo et al. [41]	17–65	34.7	37.0	-	-	22.9	25.2	-	-	-	-	-	-	-	-	-	-
Rabanal et al.[58]	40–65	42.5	48.6	5.0	3.0	25.7	26.9	32.0	39.0	46.7	48.7	5.0	2.0	28.6	25.9	32.0	45.0
Agyemang et al. (AS)[59]	18–70	47.6	47.3	-	-	26.4	25.2	42.6	27.0	47.5	45.5	-	-	28.8	24.3	23.9	24.2
Agyemang et al.(G) [59]	18–70	47.1	47.3	-	-	26.8	25.2	7.8	27.0	43.9	45.5	-	-	29.5	24.3	2.4	24.2

BMI = body mass index; SSA = Sub-Saharan Africans; EU = Europeans; BC = Black Caribbeans; BA = Black Africans; AS = African Surinamese; G = G = Ghanians.

\* = Oral Glucose Tolerance Test (75 g);

\*\* = Self-reported doctor-diagnosed diabetes.

doi:10.1371/journal.pone.0147601.t002

DBP, respectively) showed no formal evidence of publication bias. Application of trim and fill to the SBP and DBP meta-analysis did not reveal missing studies.

Visual inspection of the funnel plot (S5 Fig), and regression tests of funnel plot asymmetry (p = 0.31 and p = 0.72 for SBP and DBP, respectively) showed no formal evidence of publication bias. Application of trim and fill to the SBP and DBP meta-analysis did not reveal missing studies.

To further investigate sources of heterogeneity among studies on SA participants, studies were grouped according to the country of origin. The Q-statistic for subgroups differences was highly significant for SBP and DBP in both genders (p<0.001 for all). Interestingly, BP differences were larger in subjects coming from Bangladesh and Pakistan for both SBP (S6 Fig) and DBP (S7 Fig). When studies were grouped according to the dominant religion in the country of origin, participants from Muslim countries showed significantly lower BP values than EU for both SBP (-9.22 mmHg 95% CI -11.44 to -7.00 in men, and -8.47 mmHg, 95% CI -10.75 to -6.18 in women) and DBP (-3.23, 95% CI -5.24 to -1.23 in men, and -1.57, 95% CI -2.28 to -0.85 in women). Differences between Muslim and non-Muslim participants were significant



**Table 3. Age, mean prevalence of diabetes mellitus, body mass index, and smoking habit by gender among South Asians and native Europeans.**

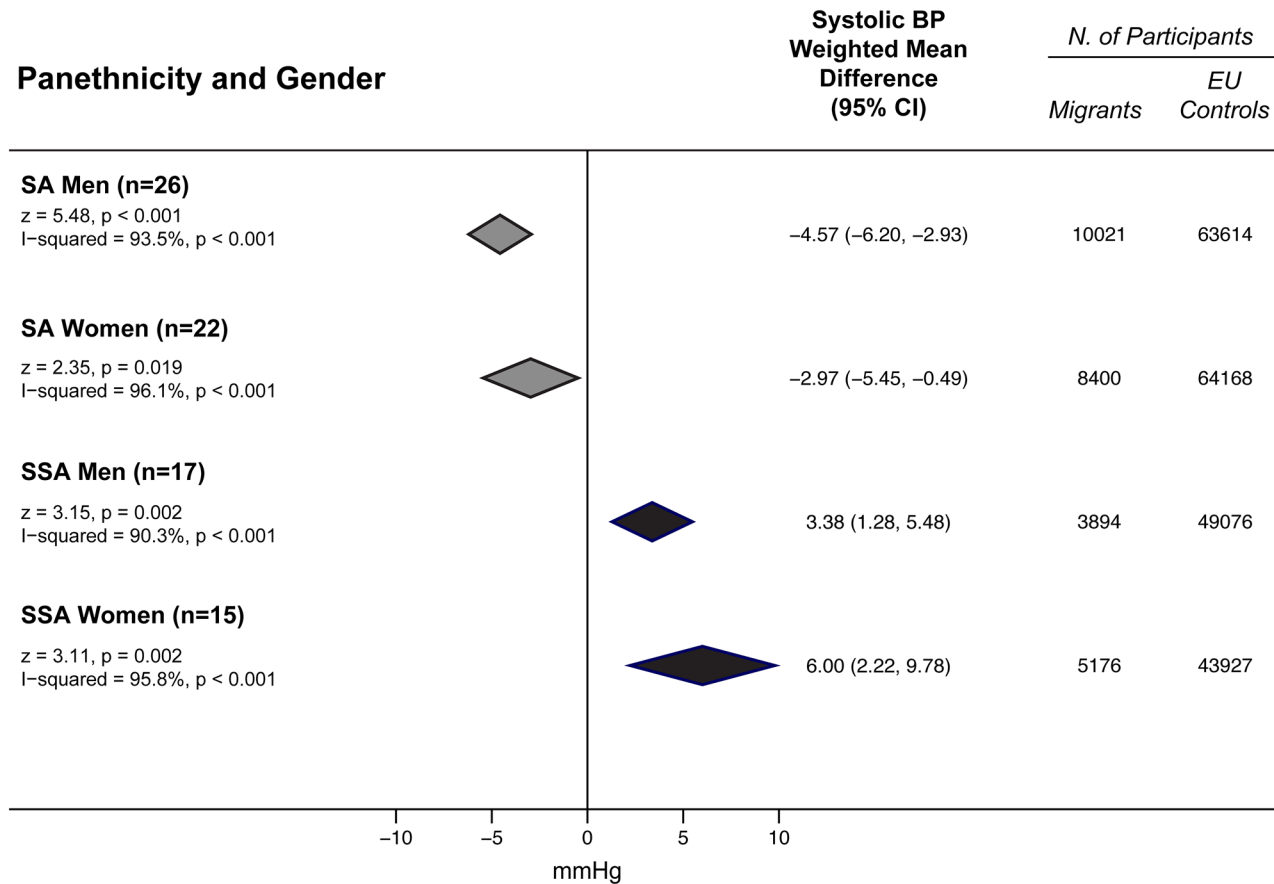
Author [Ref]	Age (range)	MEN								WOMEN							
		Age (mean)		Diabetes (%)		BMI (kg/m <sup>2</sup> )		Smokers (%)		Age (mean)		Diabetes (%)		BMI (kg/m <sup>2</sup> )		Smokers (%)	
		SA	EU	SA	EU	SA	EU	SA	EU	SA	EU	SA	EU	SA	EU	SA	EU
McKeigue et al.[46]	35–69	50.7	50.9	22.0*	10.0*	23.9	26.6	82.0	45.0	49.7	51.4	23.0*	4.0*	23.7	26.1	22.0	39.0
Cruikshank et al. [31]	45–74	62.2	62.2	31.0*	4.0*	25.2	26.2	-	-	60.0	60.3	28.0*	2.0*	26.8	26.3	-	-
McKeigue et al.[36]	40–69	-	-	19.6*	4.8*	25.7	25.9	-	-	-	-	16.1*	2.3*	27.0	25.2	-	-
Knight et al.[47]	20–65	39.3	41.0	12.7*	4.5*	23.8	25.2	43.8	43.9	-	-	-	-	-	-	-	-
Knight et al.[48]	20–65	41.0	41.0	10.9*	4.4*	24.5	25.0	39.1	43.8	-	-	-	-	-	-	-	-
Simmons et al.[52]	20–60	-	-	12.4*	3.2*	-	-	24.0	48.0	-	-	11.2*	4.7*	-	-	3.0	47.0
Cappuccio et al.[33]	40–59	49.4	49.8	25.0*	7.0*	24.8	25.8	25.2	39.6	49.4	49.8	20.0*	5.0*	27.1	26.1	2.9	33.3
Bhopal et al. (Indians) [49]	25–74	50.7	54.2	16.0*	16.0*	26.9	26.1	14.0	32.0	52.4	54.0	20.0*	15.0*	27.9	26.0	1.0	31.0
Bhopal et al. (Pakistanis) [49]	25–74	52.2	54.2	35.0*	16.0*	26.6	26.1	32.0	32.0	48.3	54.0	34.0*	15.0*	27.8	27.0	5.0	31.0
Bhopal et al. (Bangladeshi)[49]	25–74	47.7	54.2	17.0*	16.0*	25.4	26.1	57.0	32.0	48.1	54.0	13.0*	15.0*	26.3	28.0	2.0	31.0
HSE 1999(Indians) [43]	>16	41.2	45.0	7.7**	3.3**	25.2	26.6	23.0	27.0	40.3	45.4	4.7**	2.5**	25.9	26.4	6.0	27.0
HSE 1999 (Pakistanis)[43]	>16	37.6	45.0	8.7**	3.3**	25.4	26.6	26.0	27.0	34.6	45.4	5.3**	2.5**	26.5	26.4	5.0	27.0
HSE 1999 (Bangladeshi)[43]	>16	39.2	45.0	10.6**	3.3**	23.8	26.6	44.0	27.0	33.9	45.4	5.9**	2.5**	24.1	26.4	1.0	27.0
Whitty et al.[41]	35–56	46.3	43.8	7.0*	2.0*	-	-	25.0	15.0	46.3	43.8	7.0*	2.0*	-	-	6.0	26.0
Lane et al. [34]	>30	44.5	44.1	-	-	25.2	25.9	31.3	40.6	-	-	-	-	-	-	-	-
HSE 2004 (Indians) [44]	>16	43.5	47.4	10.1**	4.3**	25.8	27.1	20.0	24.0	41.9	47.2	5.9**	3.4**	26.2	26.8	5.0	23.0
HSE 2004 (Pakistanis) [44]	>16	37.9	47.4	7.3**	4.3**	25.9	27.1	29.0	24.0	35.0	47.2	8.6**	3.4**	27.1	26.8	5.0	23.0
HSE 2004 (Bangladeshi) [44]	>16	38.8	47.4	8.2**	4.3**	23.8	27.1	40.0	24.0	35.0	47.2	5.2**	3.4**	25.7	26.8	2.0	23.0
Agyemang et al.[42]	35–60	44.3	48.1	24.8	7.8	26.4	26.2	48.5	54.0	45.0	47.4	25.8	5.8	27.5	26.1	-	-
Lyratzopoulos et al. [50]	35–60	44.2	45.6	-	-	25.9	26.7	27.4	43.6	43.7	45.7	-	-	26.4	26.0	7.0	34.4
Glenday et al. (Pakistanis)[53,54]	31–60	45.3	44.6	11.0*	2.0*	27.4	26.3	37.0	27.0	43.9	44.3	14.0*	1.0*	29.3	24.8	5.0	27.0
Glenday et al.(Sri Lankans)[53,54]	31–60	40.1	44.6	8.0*	2.0*	25.7	26.3	19.0	27.0	39.5	44.3	10.0*	1.0*	26.8	24.8	19.0	27.0
Gualdi-Russo et al. [38]	17–65	32.6	37.0	-	-	22.8	25.2	-	-	-	-	-	-	-	-	-	-
Gray et al.[51]	40–75	53.9	58.7	6.1*	3.4*	26.6	28.2	-	-	52.2	58.5	4.1*	2.2*	28.4	28.4	-	-
Rabanal et al.[58]	40–65	46.7	48.6	14.0	3.0	26.8	26.9	28.0	39.0	46.7	48.4	15.0	2.0	29.0	25.9	2.0	45.0
Agyemang et al.[59]	18–70	45.2	47.3	-	-	25.7	25.2	39.5	27.0	46.7	45.5	-	-	26.9	24.3	18.6	24.2

BMI = body mass index; SA = South Asians; EU = Europeans.

\* = Oral Glucose Tolerance Test (75 g);

\*\* = Self-reported doctor-diagnosed diabetes.

doi:10.1371/journal.pone.0147601.t003



**Fig 2. SBP differences between minority groups and EU participants by panethnicity and gender.** Subgroup comparisons of the weighted mean difference of systolic blood pressure (BP) between minority groups and EU participants by panethnicity and gender. Diamonds denote the pooled estimates and 95% confidence intervals. SSA = Sub-Saharan Africans; SA = South Asians; EU = Europeans, “n” is the number of comparisons available for each subgroup.

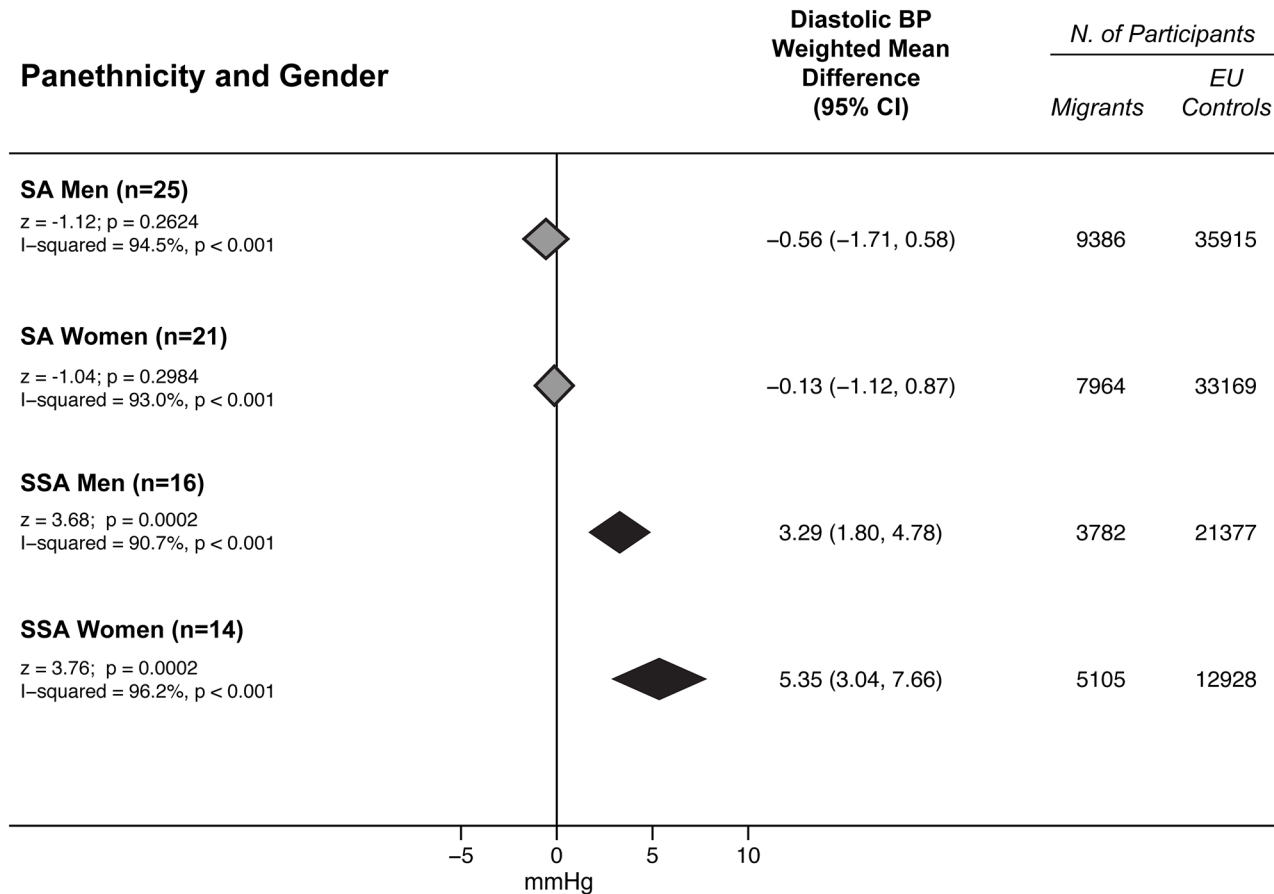
doi:10.1371/journal.pone.0147601.g002

(Fig 4) for both SBP and DBP (p<0.001 for all comparisons) regardless of gender (interaction p = 0.644 and p = 0.126 for SBP and DBP respectively).

### Role of potential effect modifiers

Because heterogeneity among studies and subgroups was substantial (I-squared > 85%), we used multivariate random-effect meta-regression to investigate the role of potential effect modifiers of BP differences (panethnicity, gender, study year, and the differences in diabetes prevalence, BMI, age at examination, and smoking prevalence between minority groups and EU). Panethnicity had a highly significant effect on both SBP (Table 4) and DBP mean differences (Table 5). In both models, gender and the interaction terms were not significant. We also tested study quality as a potential effect modifier in a meta-regression model (S3 Table) and found no evidence of a significant effect for both SBP and DBP.

In further multivariate meta-regression analyses (including all candidate effect modifiers), the weighted mean SBP difference between minority groups and EU, was largely influenced by panethnicity and by the difference in diabetes prevalence (Table 6) while study year, difference in BMI, age at examination, and the difference in smoking prevalence did not reach formal statistical significance. The proportion of residual between-study variance (final model  $\tau^2 = 8.37$



**Fig 3. DBP differences between minority groups and EU participants by panethnicity and gender.** Subgroup comparisons of the weighted mean difference of diastolic blood pressure (BP) between minority groups and EU participants by panethnicity and gender. Diamonds denote the pooled estimates and 95% confidence intervals. SSA = Sub-Saharan Africans; SA = South Asians; EU = Europeans, “n” is the number of comparisons available for each subgroup.

doi:10.1371/journal.pone.0147601.g003

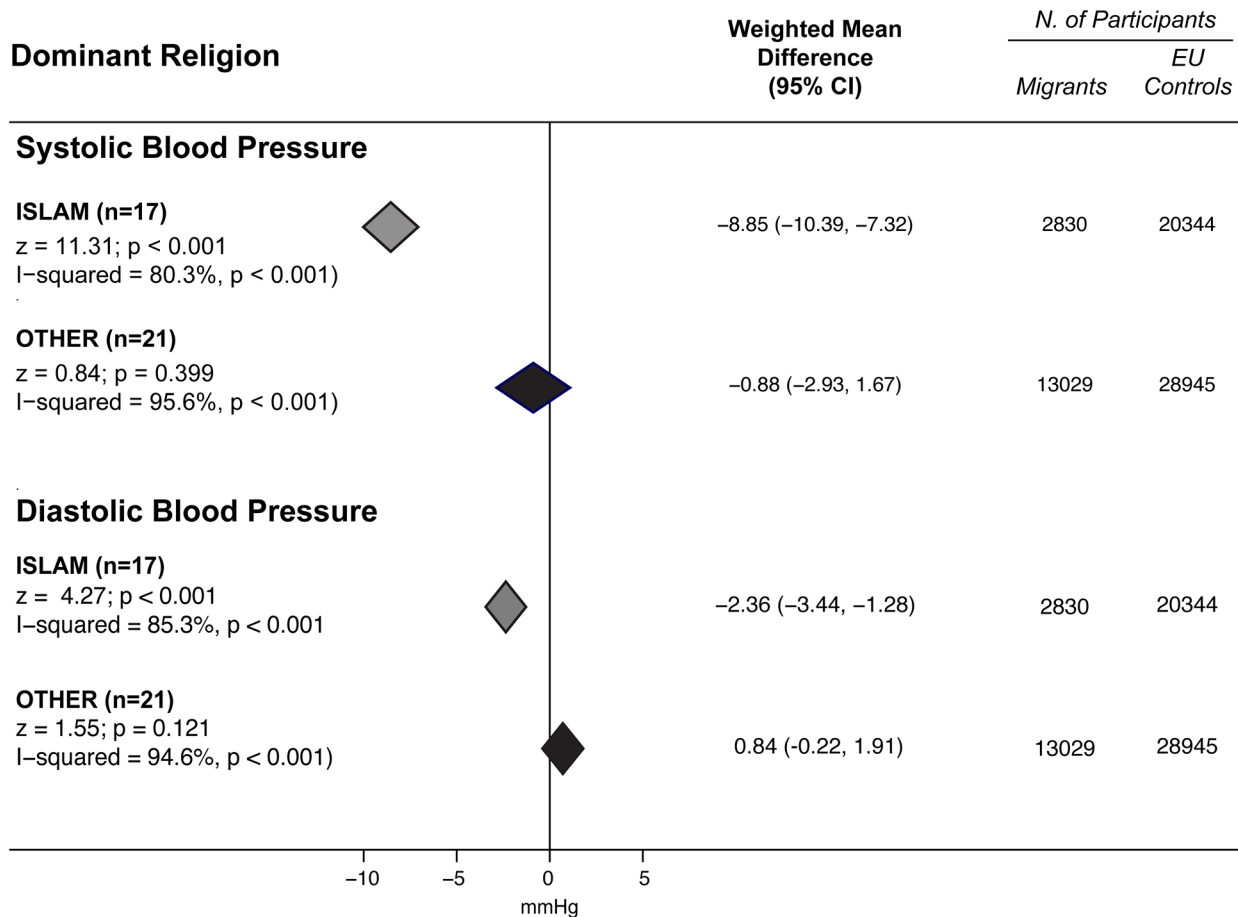
and model without covariates  $\tau^2 = 39.35$ ) explained by including the above covariates in the model was large (Adjusted R-squared 78.73%), but still significantly different from zero (likelihood ratio test of  $\tau^2 = 0, p < 0.001$ ).

Representative plots of the joint effect of panethnicity and difference in diabetes prevalence on the weighted mean SBP difference for women and men are shown in Fig 5.

For DBP the weighted mean difference was influenced only by panethnicity (4.24 mmHg, 95% CI 1.77 to 6.71, p = 0.001) whereas none of the other tested effect modifiers had a significant effect.

### Discussion

The results of this systematic review and meta-analysis show that: a) SSA living in Europe have higher BP levels than EU; in the highly heterogeneous group of SA, BP levels are on average lower than in EU, mainly owing to the finding of lower BP values in people coming from Muslim countries; b) in meta-regression analyses the weighted mean SBP difference between minority groups and EU, was not influenced by the year of the survey; c) the presence of diabetes, irrespective of origin, is associated with higher BP levels.



**Fig 4. BP differences between subjects originating from SA countries and EU participants by dominant religion in the country of origin.** Subgroup comparisons of the weighted mean difference of systolic and diastolic blood pressure between South Asians (SA) and European (EU) participants by dominant religion in the country of origin. The term "others" refers to comparisons performed between EU participants and subjects who originated from countries with a different dominant religion. Diamonds denote the pooled estimates and 95% confidence intervals, "n" is the number of comparisons available for each subgroup.

doi:10.1371/journal.pone.0147601.g004

These results lead to three important considerations: a) prevention strategies implemented in Europe played a key role in reducing BP in general population and in reducing the incidence of CV disease in Europe; however, the difference of BP levels between SSA and EU was consistent over years thus suggesting the importance of population specific intervention strategies; b)

**Table 4. Random effect meta-regression estimates of systolic blood pressure for panethnicity, gender and their interaction.**

Variables	Point Estimate	95% CIs	p-value	Multiplicity adjusted p-value
<b>Panethnicity (SSA vs. SA)</b>	8.014	4.369 to 11.660	<0.001	<0.001
<b>Gender (Women vs. Men)</b>	1.618	-1.762 to 4.998	0.348	0.650
<b>Interaction Term</b>				
Panethnicity x Gender	0.860	-4.529 to 6.249	0.755	0.980

SSA = Sub-Saharan Africans; SA = South Asians; EU = Europeans. Systolic blood pressure Model (number of comparisons = 80): Intercept: -4.5857 mmHg (-6.862 to -2.310; p<0.001); Proportion of between-study variance explained (Adjusted R-squared) = 34.45%; Joint test for all covariates F = 13.34, p<0.0001

doi:10.1371/journal.pone.0147601.t004

**Table 5. Random effect meta-regression estimates of diastolic blood pressure for panethnicity, gender and their interaction.**

Variables	Point Estimate	95% CIs	p-value	Multiplicity adjusted p-value
<b>Panethnicity</b> (SSA vs. SA)	3.896	1.757 to 6.035	<0.001	<0.001
<b>Gender</b> (Women vs. Men)	0.366	-1.587 to 2.318	0.713	0.980
<b>Interaction Term</b>				
Panethnicity x Gender	1.593	-1.569 to 4.755	0.323	0.700

SSA = Sub-Saharan Africans; SA = South Asians; EU = Europeans. Diastolic blood pressure Model (number of comparisons = 76): Intercept: -0.598 mmHg (-1.912 to 0.716); p = 0.373); Proportion of between-study variance explained (Adjusted R-squared) = 33.02%; Joint test for all covariates F = 11.91, p<0.0001

doi:10.1371/journal.pone.0147601.t005

**Table 6. Weighted mean difference in systolic blood pressure in relation to explanatory variables in multivariate meta-regression model including all potential effect modifiers.**

Variables	Point Estimate	95% CIs	p-value	Multiplicity Adjusted p-value
<b>Panethnicity</b> (SSA vs. SA)	7.674	4.757 to 10.591	<0.001	<0.001
<b>Diabetes Prevalence</b> (1% difference)	0.315	0.129 to 0.501	0.001	0.004
<b>Study Year</b> (1 year)	0.114	-0.189 to 0.417	0.460	0.990
<b>Body Mass Index</b> (1 kg/m <sup>2</sup> difference)	0.165	-0.868 to 1.198	0.755	1.000
<b>Age at examination</b> (1 year difference)	0.547	0.058 to 1.037	0.028	0.120
<b>Gender</b> (Women vs. Men)	-3.101	-6.699 to 0.496	0.091	0.380
<b>Smoking Prevalence</b> (1% difference)	-0.194	-0.397 to 0.009	0.062	0.280

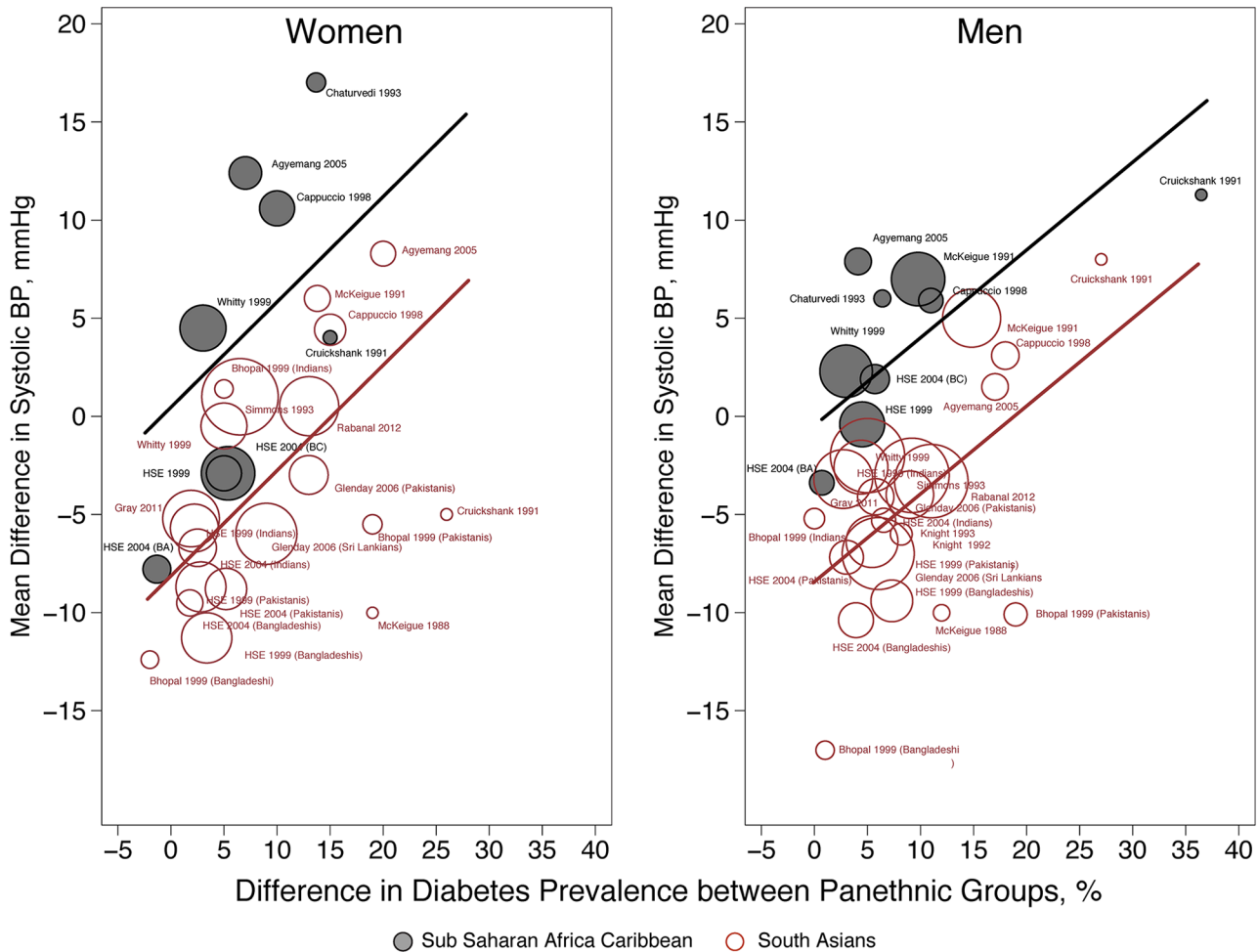
Differences were calculated by subtracting the average values of Minority groups from those of Europeans. SSA = Sub-Saharan Africans; SA = South Asians; EU = Europeans. Model for Systolic blood pressure (number of comparisons = 42): Proportion of between-study variance explained (Adjusted R-squared) = 78.73%; joint test for all covariates F = 14.33, p<0.0001

doi:10.1371/journal.pone.0147601.t006

the finding of lower BP levels in SA Muslim populations suggests the importance of as yet untapped lifestyle and behavioral habits of such populations (religion being a likely proxy for them) that may represent an advantage reflecting a lower predisposition towards the development of hypertension; c) the additive effect of diabetes, independent from origin, in explaining the findings of elevated BP levels emphasizes the need to develop new strategies for the prevention and control of hypertension and ensuing CV disease in groups at higher prevalence of diabetes.

### Sub Saharan Africans

SSA individuals living in Europe have higher BP values than EU independently of gender. Consistent with raised BP levels, an excess risk of stroke and renal disease was observed for SSA living in Europe [5,6]. The term SSA was adopted to accommodate the population divisions used in the papers analysed although it is to be acknowledged the heterogeneity of this SSA group in terms of language, diet, and religious practices [2,60]. Whilst there may be genetic markers of predisposition to hypertension in SSA populations [2,61,62] it is clear from international and migration studies that their higher burden of hypertension is highly modifiable with lifestyle changes and adaptations to host environments [2,63,64]. This consideration encouraged public and health care systems to intervene in this group. Awareness of the higher burden of hypertension in SSA subjects was reported to be high amongst European physicians who more correctly recognize and diagnose hypertension in SSA than in other ethnic groups [36]. Likewise specific prevention strategies for hypertension in SSA (mainly low sodium diet) exist [65]. In



**Fig 5. Gender specific meta-regression model. Women** (number of comparisons = 28). Intercept: -8.260 mmHg (-12.167 to -4.352;  $p < 0.001$ ); Ethnicity: 8.695 mmHg (3.751 to 13.640;  $p = 0.001$ ); Difference in Diabetes Prevalence: 0.543 mmHg (0.207 to 0.880;  $p = 0.002$ ). Proportion of between-study variance explained (Adjusted R-squared) = 45.81%; joint test for all covariates  $F = 9.79$ ,  $p < 0.0017$ . **Men** (number of comparisons = 31). Intercept: -7.730 mmHg (-10.268 to -5.193;  $p < 0.001$ ); Ethnicity: 8.496 mmHg (5.234 to 11.759);  $p < 0.001$ ; Difference in Diabetes Prevalence: 0.481 mmHg (0.162 to 0.600;  $p < 0.001$ ). Proportion of between-study variance explained (Adjusted R-squared) = 60.73%; joint test for all covariates  $F = 18.04$ ,  $p < 0.001$ .

doi:10.1371/journal.pone.0147601.g005

addition, minority SSA (or SA) groups at the end of the 1970s were likely to be different from their counterparts at the end of the 2000s in terms of immigration reasons, habits, and socio-economic status. All these factors could eventually influence the risk of high BP. The studies included in this meta-analysis were carried out in Europe over a period of over 30 years (from 1977 to 2015), and may give us the opportunity to assess whether BP differences in the SSA group were influenced by time. However, when the potential interaction between time trends for differences in BP and other CV risk factors, body mass index and diabetes was taken into account, the heterogeneity of the studies was not influenced by the time of data collection. Therefore limitations of prevention strategies so far implemented in effectively reaching minority subgroups and in modifying their CV risk profile are evident.

### South Asians

BP levels are not significantly higher in SA than in EU. This finding apparently does not fit with the higher incidence of stroke and CV death in SA living in Europe as compared with EU

[5,8,66,67]. The heterogeneity of studies carried out in SA is however large. Beside the high prevalence of diabetes mellitus, uniformly higher in SA than in many other populations, genetic predisposition may also contribute to the high CV disease burden in SA [68,69]. The so-called SA group is highly heterogeneous also because SA living in Europe cover a wide range of migrant profiles (professionals, business elites, unskilled labourers, refugees). In addition, SA ethnic roots originate from the Indian subcontinent, a large geographic area that includes India, Pakistan, Sri Lanka, Nepal, and Bangladesh, with important differences in diet, culture, and lifestyle among different populations and religions. BP variations between SA populations in Europe with different countries of origin have already been reported [52] and important differences between Hindus and Muslims have been found [63,70]. In the present analysis, when study populations are categorized according to the main religion of the country of origin, this factor also significantly contributes to the heterogeneity. The country of origin and religion are proxies for other risk factors and behaviours (i.e. alcohol use, vegetarian diet, use of different cooking procedures) [71] that may explain some of the differences. Unfortunately, data on alcohol consumption, and diet are not available in most of included cohorts. In addition, the classification of studies including mixed populations as 'other' [53], might lead to a misrepresentation. The use of the main religion in the country of origin as a proxy for religion of the migrant populations, might also lead to a biased sample, with the clearest example being minority populations fleeing persecution from majority populations. However, notwithstanding the presence of Muslim subjects among populations classified as 'other' and the presence of non-Muslim individuals within the Muslim group, differences are evident. It might thus be important to consider this aspect in culturally-specific strategies for prevention [72].

Lifestyle modification can also slow down the progression of diabetes mellitus. Although mean BMI seems comparable between SA and EU, it should be considered that compared with EU, SA subjects have increased abdominal visceral fat and greater insulin resistance at similar levels of BMI [73]. It has indeed been argued that at comparable values of BMI, SA subjects may have a higher risk of CV disease than EU [3,39,74,75]. Data on waist circumference are not available in most of included cohorts. In spite of this, and although the measurement of BMI might not be a key factor to explain the observed heterogeneity [76], it is essential to encourage the control of body weight in migrant populations because of its relationship with diabetes.

## Strengths and limitations

This meta-analysis has some strengths: the overall large size enabling subgroup analyses, and the common study strategies. The study includes cohorts from all over Europe, although the data are predominantly UK-based.

Because of the nature of the studies and the large statistical heterogeneity, this systematic review has some limitations. When working with observational studies there is a good chance that heterogeneity exists between studies and that heterogeneity can be more extreme in observational studies than interventional studies [77]. Indeed, large heterogeneity can be problematic if a single summary measure is used [78], therefore we stratified by study level features and used regression analysis to quantitatively assess the extent to which pooled estimates varied along with these features [77–79]. We believe that our careful and comprehensive approach reduces the impact of heterogeneity on estimates and can make an important contribution to debates on public health policy.

Despite adjustment for known potential confounders, we cannot rule out the possibility that the observed associations are confounded by other unmeasured factors such as dietary sodium and potassium. This problem is made more complex by scenarios that include possible

differences in the use of antihypertensive treatment among subgroups. In the Health Survey for England (HSE) study [46], treatment rates were found to be highest among black men and women. Among those on antihypertensive medication, the odds of having BP controlled (SBP <160 mm Hg and DBP <95 mm Hg) did not differ among the three groups of older men but was reduced in older SA women, compared with white women.

Average BP values measured at the population level may be influenced by both the number of measurements performed at a single visit, and by the number of visits considered by the study protocol. Although these methodological aspects may sometimes limit the possibility to compare absolute results obtained in different studies, they unlikely influenced the interpretability of our results, the same methodology being adopted for the different ethnic groups within the same study. The same consideration is also valid for diabetes, the same diagnostic criteria being adopted for different groups within the same study.

Finally, the pragmatic approach we adopted to accommodate studied populations in two large panethnic groups, limits the possibility to investigate in details the role of ethnicity. The essence of ethnicity embodies shared origins or social background, culture, language and religious traditions that are distinctive, maintained between generations, which lead to a sense of identity, and group.

SSA and SA groups are highly heterogeneous so that future research should prioritize the examination of variation within the two groups.

## Conclusions

The control of hypertension among minority groups is crucial for addressing social inequalities in health care. To avoid escalation of such inequalities, two main strategies might be considered. From the point of health care delivery, easier access to services as well as availability and affordability of antihypertensive drugs should be facilitated and awareness of specific needs among practitioners should be improved. However these interventions might be still ineffective in transferring the concept of prevention to migrant and vulnerable populations. Public health preventive strategies should match health care provision. It has taken decades to educate and increase awareness amongst EU citizens on the importance of prevention but only few European Union member states so far offer all undocumented migrants the opportunity to have their BP treated [1,9,14]. Ignoring this when immigration is increasing might halt the virtuous reduction of CV events that has occurred in Europe over the last decades.

## Supporting Information

**S1 Text. Newcastle—Ottawa Quality Assessment Scale (adapted for cross sectional studies).**  
(PDF)

**S2 Text. Systematic Review Protocol.**  
(PDF)

**S1 Table. Influential analysis (Random effects model) for systolic blood pressure weighted mean difference (WMD).**  
(PDF)

**S2 Table. Influential analysis (Random effects model) for Diastolic blood pressure weighted mean difference (WMD).**  
(PDF)



**S3 Table. Effect of study quality on estimates of systolic (A) and diastolic (B) blood pressure (random effect metaregression).**

(PDF)

**S1 Fig. Effect sizes of individual studies on South Asians for systolic BP.** Forest plot of Systolic Blood Pressure mean differences between South Asians and Europeans. Estimates (95% CIs) are denoted by black boxes (black lines). A red diamond represents the pooled estimates for men and women, where diamond width corresponds to 95% CI bounds, "n" is the number of comparisons available within each subgroup.

(PDF)

**S2 Fig. Effect sizes of individual studies on South Asians for diastolic BP.** Forest plot of Diastolic Blood Pressure mean differences between South Asians and Europeans. Estimates (95% CIs) are denoted by black boxes (black lines). A red diamond represents the pooled estimates for men and women, where diamond width corresponds to 95% CI bounds, "n" is the number of comparisons available within each subgroup.

(PDF)

**S3 Fig. Effect sizes of individual studies on Sub-Saharan Africans for systolic BP.** Forest plot of Systolic Blood Pressure mean differences between Sub Saharan Africans and Europeans. Estimates (95% CIs) are denoted by black boxes (black lines). A red diamond represents the pooled estimates for men and women, where diamond width corresponds to 95% CI bounds, "n" is the number of comparisons available within each subgroup.

(PDF)

**S4 Fig. Effect sizes of individual studies on Sub-Saharan Africans for diastolic BP.** Forest plot of Diastolic Blood Pressure mean differences between Sub Saharan Africans and Europeans. Estimates (95% CIs) are denoted by black boxes (black lines). A red diamond represents the pooled estimates for men and women, where diamond width corresponds to 95% CI bounds, "n" is the number of comparisons available within each subgroup.

(PDF)

**S5 Fig. Funnel plots for publication bias.** Funnel plots for publication bias. Each comparison is plotted by its effect size on the horizontal axis and its precision on the vertical axis.

(PDF)

**S6 Fig. Systolic BP differences between South Asians and Europeans by Country of origin.** Subgroup comparisons of the weighted mean difference of systolic blood pressure between South Asians (SA) and European participants (EU) by country of origin. The term "others" refers to comparisons where the Country of origin of SA subjects was not specified. Diamonds denote the pooled estimates and 95% confidence intervals, "n" is the number of comparisons available within each subgroup.

(PDF)

**S7 Fig. Diastolic BP differences between South Asians and Europeans by Country of origin.** Subgroup comparisons of the weighted mean difference of diastolic blood pressure between South Asians (SA) and European participants (EU) by country of origin. The term "others" refers to comparisons where the Country of origin of SA subjects was not specified. Diamonds denote the pooled estimates and 95% confidence intervals, "n" is the number of comparisons available within each subgroup.

(PDF)

**S8 Fig. Galbraith's radial plots for Systolic and Diastolic BP.** Precision is on the horizontal axis plotted against the individual standardized effect sizes ( $v_i$  is the sampling variance of the observed effect size (ES) and  $\tau^2$  is the amount of heterogeneity, see [methods](#) for details). The central solid line represents the overall effect. Potential outliers (open symbols) lie either above or below the upper and lower confidence limits (dotted lines). (PDF)

## Acknowledgments

**The European Society of Hypertension (ESH) Working Group (WG) on Cardiovascular Risk in Low Resource Settings:** Pietro A Modesti (Chair of the WG), Gianfranco Parati (Milan, Italy), Piergiuseppe Agostoni (Milan, Italy), Charles Agyemang (Amsterdam, The Netherlands), Henrique Barros (Porto, Portugal), Sanjay Basu (San Francisco, Ca, USA), Athanase Benetos (Vandoeuvre-les-Nancy, France), Francesco P Cappuccio (Coventry, United Kingdom), Antonio Ceriello (Barcelona, Spain), Stefano Del Prato (Pisa, Italy), Robert Kalyesubula (Kampala, Uganda), Michael Ochan Kilama (Kampala, Uganda), Eoin O'Brien (Dublin, Ireland), Stefano Perlini (Pavia, Italy), Eugenio Picano (Pisa, Italy), Gianpaolo Reboldi (Perugia, Italy), Josep Redon (Valencia, Spain), Giuseppe Remuzzi (Bergamo, Italy), David Stuckler (Oxford, United Kingdom), Luc M Van Bortel (Gent, Belgium), Dong Zhao (Beijing, China), Mohamed Bamoshmoosh (Sana'a, Yemen), Eleonora Perruolo (Florence, Italy), Louise Bennet (Malmö, Sweden), Rosa Maria Bruno (Pisa, Italy), Axel C Carlsson (Stockholm, Sweden), Renata Cifkova (Prague, Czech Republic), Lars T Fadnes (Bergen, Norway), Helen Grech (La Valletta, Malta), Marek Klocke (Krakow, Poland), Bernadette Kumar (Oslo, Norway), Nebojsa Lalic (Belgrade, Serbia), Athanasios J Manolis (Athens, Greece), Marie Nørredam (Copenhagen, Denmark), Luciano Massetti (Florence, Italy), Maximilian Pangrattus de Courten (Melbourne, Australia), Marta Pereira (Porto, Portugal), Eleonora Perruolo (Florence, Italy), Lorenza Pratali (Pisa, Italy), Stefano Rapi (Florence, Italy), Andreas Siebert (Brandenburg, Germany), Alicia Szklarska (Wrocław, Poland), Michal Tendera (Katowice, Poland), Marc Twagirimukiza (Gent, Belgium), Anna Volodina (Heidelberg, Germany), Ghassan Watfa (Nancy, France), Kamilu M Karaye (Kano, Nigeria), Bernard Kianu Phanzu (Kinshasa, Democratic Republic of Congo), Anastase Dzudie (Douala, Cameroon), Roland N'Guetta (Abidjan, Cote d'Ivoire), Mondo Charles Kiiza (Kampala, Uganda), Esayas Kebede Gudina (Jimma, Ethiopia), Benjamin Longo-Mbenza (Eastern Cape, South Africa), Joseph Mucumbitsi (Kigali, Rwanda), Benedict Anisiuba (Enugu, Nigeria), Toure Ali Ibrahim (Niamey, Niger), Ogah S Okechukwu (Ibadan, Nigeria).

## Author Contributions

Conceived and designed the experiments: PAM. Performed the experiments: PAM G. Reboldi FPC CA SR EP GP. Analyzed the data: PAM G. Reboldi G. Remuzzi CA. Wrote the paper: PAM CA FPC G. Remuzzi G. Reboldi.

## References

1. Rechel B, Mladovsky P, Ingleby D, Mackenbach JP, McKee M (2013) Migration and health in an increasingly diverse Europe. *Lancet* 381: 1235–1245. doi: [10.1016/S0140-6736\(12\)62086-8](https://doi.org/10.1016/S0140-6736(12)62086-8) PMID: [23541058](https://pubmed.ncbi.nlm.nih.gov/23541058/)
2. Opie LH, Seedat YK (2005) Hypertension in Sub-Saharan African Populations. *Circulation* 112: 3562–3568. PMID: [16330697](https://pubmed.ncbi.nlm.nih.gov/16330697/)
3. Gupta M, Singh N, Verma S (2006) South Asians and cardiovascular risk—What clinicians should know. *Circulation* 113: E924–E929. PMID: [16801466](https://pubmed.ncbi.nlm.nih.gov/16801466/)

4. Gunarathne A, Patel JV, Gammon B, Gill PS, Hughes EA, Lip GY (2009) Ischemic stroke in South Asians: a review of the epidemiology, pathophysiology, and ethnicity-related clinical features. *Stroke* 40: e415–423. doi: [10.1161/STROKEAHA.108.535724](https://doi.org/10.1161/STROKEAHA.108.535724) PMID: [19390072](https://pubmed.ncbi.nlm.nih.gov/19390072/)
5. Harding S, Rosato M, Teyhan A (2008) Trends for coronary heart disease and stroke mortality among migrants in England and Wales, 1979–2003: slow declines notable for some groups. *Heart* 94: 463–470. PMID: [17690159](https://pubmed.ncbi.nlm.nih.gov/17690159/)
6. Lambie M, Richards N, Smith S (2008) Ethnicity, age and incidence rates for renal replacement therapy (RRT) in Birmingham, UK: 1990–2004. *Nephrol Dial Transplant* 23: 3983–3987. doi: [10.1093/ndt/gfn366](https://doi.org/10.1093/ndt/gfn366) PMID: [18596133](https://pubmed.ncbi.nlm.nih.gov/18596133/)
7. Forouhi NG, Sattar N, Tillin T, McKeigue PM, Chaturvedi N (2006) Do known risk factors explain the higher coronary heart disease mortality in South Asian compared with European men? Prospective follow-up of the Southall and Brent studies, UK. *Diabetologia* 49: 2580–2588. PMID: [16972045](https://pubmed.ncbi.nlm.nih.gov/16972045/)
8. McKeigue PM, Miller GJ, Marmot MG (1989) Coronary heart disease in south Asians overseas: a review. *J Clin Epidemiol* 42: 597–609. PMID: [2668448](https://pubmed.ncbi.nlm.nih.gov/2668448/)
9. Karanikolos M, Mladovsky P, Cylus J, Thomson S, Basu S, Stuckler D, et al. (2013) Financial crisis, austerity, and health in Europe. *Lancet* 381: 1323–1331. doi: [10.1016/S0140-6736\(13\)60102-6](https://doi.org/10.1016/S0140-6736(13)60102-6) PMID: [23541059](https://pubmed.ncbi.nlm.nih.gov/23541059/)
10. Kaufman JS, Cooper RS, McGee DL (1997) Socioeconomic status and health in blacks and whites: the problem of residual confounding and the resiliency of race. *Epidemiology* 8: 621–628. PMID: [9345660](https://pubmed.ncbi.nlm.nih.gov/9345660/)
11. Agyemang C, van Oeffelen AAM, Bots ML, Stronks K, Vaartjes I (2014) Socioeconomic inequalities in acute myocardial infarction incidence in migrant groups: has the epidemic arrived? Analysis of nationwide data. *Heart* 100: 239–246. doi: [10.1136/heartjnl-2013-304721](https://doi.org/10.1136/heartjnl-2013-304721) PMID: [24241713](https://pubmed.ncbi.nlm.nih.gov/24241713/)
12. Valles SA (2012) Heterogeneity of risk within racial groups, a challenge for public health programs. *Preventive Medicine* 55: 405–408. doi: [10.1016/j.ypmed.2012.08.022](https://doi.org/10.1016/j.ypmed.2012.08.022) PMID: [22981732](https://pubmed.ncbi.nlm.nih.gov/22981732/)
13. Modesti PA, Agostoni P, Agyemang C, Basu S, Benetos A, Cappuccio FP, et al. (2014) Cardiovascular risk assessment in low-resource settings: a consensus document of the European Society of Hypertension Working Group on Hypertension and Cardiovascular Risk in Low Resource Settings. *Journal of Hypertension* 32: 951–960. doi: [10.1097/HJH.000000000000125](https://doi.org/10.1097/HJH.000000000000125) PMID: [24577410](https://pubmed.ncbi.nlm.nih.gov/24577410/)
14. Greer SL, Hervey TK, Mackenbach JP, McKee M (2013) Health law and policy in the European Union. *Lancet* 381: 1135–1144. PMID: [23541054](https://pubmed.ncbi.nlm.nih.gov/23541054/)
15. Agyemang C, Bhopal R (2003) Is the blood pressure of people from African origin adults in the UK higher or lower than that in European origin white people? A review of cross-sectional data. *J Hum Hypertens* 17: 523–534. PMID: [12874609](https://pubmed.ncbi.nlm.nih.gov/12874609/)
16. Khan JM, Beevers DG (2005) Management of hypertension in ethnic minorities. *Heart* 91: 1105–1109. PMID: [16020613](https://pubmed.ncbi.nlm.nih.gov/16020613/)
17. Erlinger TP, Vollmer WM, Svetkey LP, Appel LJ (2003) The potential impact of nonpharmacologic population-wide blood pressure reduction on coronary heart disease events: pronounced benefits in African-Americans and hypertensives. *Preventive Medicine* 37: 327–333. PMID: [14507489](https://pubmed.ncbi.nlm.nih.gov/14507489/)
18. He FJ, MacGregor GA (2009) A comprehensive review on salt and health and current experience of worldwide salt reduction programmes. *J Hum Hypertens* 23: 363–384. doi: [10.1038/jhh.2008.144](https://doi.org/10.1038/jhh.2008.144) PMID: [19110538](https://pubmed.ncbi.nlm.nih.gov/19110538/)
19. Millett C, Lavery AA, Stylianou N, Bibbins-Domingo K, Pape UJ (2012) Impacts of a national strategy to reduce population salt intake in England: serial cross sectional study. *PLoS One* 7: e29836. doi: [10.1371/journal.pone.0029836](https://doi.org/10.1371/journal.pone.0029836) PMID: [22238665](https://pubmed.ncbi.nlm.nih.gov/22238665/)
20. Agyemang C, Bhopal RS (2002) Is the blood pressure of South Asian adults in the UK higher or lower than that in European white adults? A review of cross-sectional data. *J Hum Hypertens* 16: 739–751. PMID: [12444535](https://pubmed.ncbi.nlm.nih.gov/12444535/)
21. Bhopal RS, Douglas A, Wallia S, Forbes JF, Lean MEJ, Gill JMR, et al. (2014) Effect of a lifestyle intervention on weight change in south Asian individuals in the UK at high risk of type 2 diabetes: a family-cluster randomised controlled trial. *Lancet Diabetes & Endocrinology* 2: 218–227.
22. Kim AH, White MJ (2010) Panethnicity, ethnic diversity, and residential segregation. *Ajs* 115: 1558–1596. PMID: [20503650](https://pubmed.ncbi.nlm.nih.gov/20503650/)
23. Higgins J, Green SP (2008) *Cochrane handbook for systematic reviews of interventions*. Oxford: Wiley-Blackwell.
24. Moher D, Liberati A, Tetzlaff J, Altman DG, Group P (2009) Preferred reporting items for systematic reviews and meta-analyses: the PRISMA statement. *PLoS Med* 6: e1000097. doi: [10.1371/journal.pmed.1000097](https://doi.org/10.1371/journal.pmed.1000097) PMID: [19621072](https://pubmed.ncbi.nlm.nih.gov/19621072/)
25. Higgins JP, Thompson SG (2002) Quantifying heterogeneity in a meta-analysis. *Stat Med* 21: 1539–1558. PMID: [12111919](https://pubmed.ncbi.nlm.nih.gov/12111919/)

26. Galbraith RF (1994) Some Applications of Radial Plots. *Journal of the American Statistical Association* 89: 1232–1242.
27. Schwarzer G (2014) meta: Meta-Analysis with R. R package version 3.7–0.
28. Nanchahal K, Mangtani P, Alston M, dos Santos Silva I (2001) Development and validation of a computerized South Asian Names and Group Recognition Algorithm (SANGRA) for use in British health-related studies. *J Public Health Med* 23: 278–285. PMID: [11873889](#)
29. Harbord RM, Higgins JPT (2008) Meta-regression in Stata. *Stata Journal* 8: 493–519.
30. Higgins JP, Thompson SG (2004) Controlling the risk of spurious findings from meta-regression. *Stat Med* 23: 1663–1682. PMID: [15160401](#)
31. Jin ZC, Zhou XH, He J (2015) Statistical methods for dealing with publication bias in meta-analysis. *Stat Med* 34: 343–360. doi: [10.1002/sim.6342](#) PMID: [25363575](#)
32. Duval S, Tweedie R (2000) Trim and fill: A simple funnel-plot-based method of testing and adjusting for publication bias in meta-analysis. *Biometrics* 56: 455–463. PMID: [10877304](#)
33. Haines AP, Booroff A, Goldenberg E, Morgan P, Singh M, Wallace P (1987) Blood pressure, smoking, obesity and alcohol consumption in black and white patients in general practice. *J Hum Hypertens* 1: 39–46. PMID: [3508196](#)
34. Cruickshank JK, Cooper J, Burnett M, MacDuff J, Drubra U (1991) Ethnic differences in fasting plasma C-peptide and insulin in relation to glucose tolerance and blood pressure. *Lancet* 338: 842–847. PMID: [1681214](#)
35. Chaturvedi N, McKeigue PM, Marmot MG (1993) Resting and ambulatory blood pressure differences in Afro-Caribbeans and Europeans. *Hypertension* 22: 90–96. PMID: [8319998](#)
36. Cappuccio FP, Cook DG, Atkinson RW, Strazzullo P (1997) Prevalence, detection, and management of cardiovascular risk factors in different ethnic groups in south London. *Heart* 78: 555–563. PMID: [9470870](#)
37. Lane D, Beevers DG, Lip GY (2002) Ethnic differences in blood pressure and the prevalence of hypertension in England. *J Hum Hypertens* 16: 267–273. PMID: [11967721](#)
38. Chaturvedi N, Bulpitt CJ, Leggetter S, Schiff R, Nihoyannopoulos P, Strain WD, et al. (2004) Ethnic differences in vascular stiffness and relations to hypertensive target organ damage. *J Hypertens* 22: 1731–1737. PMID: [15311101](#)
39. McKeigue PM, Shah B, Marmot MG (1991) Relation of Central Obesity and Insulin Resistance with High Diabetes Prevalence and Cardiovascular Risk in South Asians. *Lancet* 337: 382–386. PMID: [1671422](#)
40. Lemic-Stojcevic N, Dundas R, Jenkins S, Rudd A, Wolfe C (2001) Preventable risk factors for coronary heart disease and stroke amongst ethnic groups in London. *Ethn Health* 6: 87–94. PMID: [11480964](#)
41. Gualdi-Russo E, Zironi A, Dallari GV, Toselli S (2009) Migration and health in Italy: a multiethnic adult sample. *J Travel Med* 16: 88–95. doi: [10.1111/j.1708-8305.2008.00280.x](#) PMID: [19335807](#)
42. Meade TW, Brozovic M, Chakrabarti R, Haines AP, North WR, Stirling Y (1978) Ethnic group comparisons of variables associated with ischaemic heart disease. *Br Heart J* 40: 789–795. PMID: [687476](#)
43. Sever PS, Peart WS, Meade TW, Davies IB, Gordon D (1979) Ethnic differences in blood pressure with observations on noradrenaline and renin. 1. A working population. *Clin Exp Hypertens* 1: 733–744. PMID: [399455](#)
44. Whitty CJ, Brunner EJ, Shipley MJ, Hemingway H, Marmot MG (1999) Differences in biological risk factors for cardiovascular disease between three ethnic groups in the Whitehall II study. *Atherosclerosis* 142: 279–286. PMID: [10030378](#)
45. Agyemang C, Bindraban N, Mairuhu G, Montfrans G, Koopmans R, Stronks K, et al. (2005) Prevalence, awareness, treatment, and control of hypertension among Black Surinamese, South Asian Surinamese and White Dutch in Amsterdam, The Netherlands: the SUNSET study. *J Hypertens* 23: 1971–1977. PMID: [16208137](#)
46. Primatesta P, Bost L, Poulter NR (2000) Blood pressure levels and hypertension status among ethnic groups in England. *Journal of Human Hypertension* 14: 143–148. PMID: [10723122](#)
47. Becker E, Boreham R, Chaudhury M, Craig R, Deverill C, Doyle M, et al. (2006) Health Survey for England 2004: The health of minority ethnic groups. In: Sproston K, Mindell J, editors. London: The Information Centre. pp. 1–444.
48. Silman AJ, Evans SJ, Loysen E (1987) Blood pressure and migration: a study of Bengali immigrants in East London. *J Epidemiol Community Health* 41: 152–155. PMID: [3655635](#)
49. McKeigue PM, Marmot MG, Syndercombe Court YD, Cottier DE, Rahman S, Riemersma RA (1988) Diabetes, hyperinsulinaemia, and coronary risk factors in Bangladeshis in east London. *Br Heart J* 60: 390–396. PMID: [3060188](#)

50. Knight TM, Smith Z, Whittles A, Sahota P, Lockton JA, Hogg G, et al. (1992) Insulin resistance, diabetes, and risk markers for ischaemic heart disease in Asian men and non-Asian in Bradford. *Br Heart J* 67: 343–350. PMID: [1389712](#)
51. Knight T, Smith Z, Lockton JA, Sahota P, Bedford A, Toop M, et al. (1993) Ethnic differences in risk markers for heart disease in Bradford and implications for preventive strategies. *J Epidemiol Community Health* 47: 89–95. PMID: [8326279](#)
52. Bhopal R, Unwin N, White M, Yallop J, Walker L, Alberti KG, et al. (1999) Heterogeneity of coronary heart disease risk factors in Indian, Pakistani, Bangladeshi, and European origin populations: cross sectional study. *BMJ* 319: 215–220. PMID: [10417082](#)
53. Lyratzopoulos G, McElduff P, Heller RF, Hanily M, Lewis PS (2005) Comparative levels and time trends in blood pressure, total cholesterol, body mass index and smoking among Caucasian and South-Asian participants of a UK primary-care based cardiovascular risk factor screening programme. *BMC Public Health* 5: 125. PMID: [16313671](#)
54. Gray LJ, Yates T, Davies MJ, Brady E, Webb DR, Sattar N, et al. (2011) Defining obesity cut-off points for migrant South Asians. *PLoS One* 6: e26464. doi: [10.1371/journal.pone.0026464](#) PMID: [22039493](#)
55. Simmons D, Powell MJ (1993) Metabolic and clinical characteristics of south Asians and Europeans in Coventry. *Diabet Med* 10: 751–758. PMID: [8261758](#)
56. Glenday K, Kumar BN, Tverdal A, Meyer HE (2006) Cardiovascular disease risk factors among five major ethnic groups in Oslo, Norway: the Oslo Immigrant Health Study. *Eur J Cardiovasc Prev Rehabil* 13: 348–355. PMID: [16926663](#)
57. Kumar BN, Grøtvedt L, Meyer HE, Sjøgaard AJ, Strand BH (2009) The Oslo Immigrant Health Profile. Rapport/Nasjonalt folkehelseinstitutt 2008: 7. Norwegian Institute of Public Health. 1503–1403.
58. Rabanal KS, Lindman AS, Selmer RM, Aamodt G (2013) Ethnic differences in risk factors and total risk of cardiovascular disease based on the Norwegian CONOR study. *Eur J Prev Cardiol* 20: 1013–1021. doi: [10.1177/2047487312450539](#) PMID: [22642981](#)
59. Agyemang C, Kieft S, Snijder MB, Beune EJ, van den Born BJ, Brewster LM, et al. (2015) Hypertension control in a large multi-ethnic cohort in Amsterdam, The Netherlands: The HELIUS study. *Int J Cardiol* 183c: 180–189.
60. Agyemang C, Bhopal R, Bruijnzeels M (2005) Negro, Black, Black African, African Caribbean, African American or what? Labelling African origin populations in the health arena in the 21st century. *J Epidemiol Community Health* 59: 1014–1018. PMID: [16286485](#)
61. Baker EH, Dong YB, Sagnella GA, Rothwell M, Onipinla AK, Markandu ND, et al. (1998) Association of hypertension with T594M mutation in beta subunit of epithelial sodium channels in black people resident in London. *Lancet* 351: 1388–1392. PMID: [9593408](#)
62. Dong YB, Zhu HD, Sagnella GA, Carter ND, Cook DG, Cappuccio FP (1999) Association between the C825T polymorphism of the G protein beta 3-subunit gene and hypertension in blacks. *Hypertension* 34: 1193–1196. PMID: [10601117](#)
63. Cappuccio FP (1997) Ethnicity and cardiovascular risk: variations in people of African ancestry and South Asian origin. *J Hum Hypertens* 11: 571–576. PMID: [9364274](#)
64. Cappuccio FP, Barbato A, Kerry SM (2003) Hypertension, diabetes and cardiovascular risk in ethnic minorities in the UK. *The British Journal of Diabetes & Vascular Disease* 3: 286–293.
65. Flack JM, Sica DA, Bakris G, Brown AL, Ferdinand KC, Grimm RH Jr., et al. (2010) Management of high blood pressure in Blacks: an update of the International Society on Hypertension in Blacks consensus statement. *Hypertension* 56: 780–800. doi: [10.1161/HYPERTENSIONAHA.110.152892](#) PMID: [20921433](#)
66. Regidor E, Astasio P, Calle ME, Martinez D, Ortega P, Dominguez V (2009) The association between birthplace in different regions of the world and cardiovascular mortality among residents of Spain. *Eur J Epidemiol* 24: 503–512. doi: [10.1007/s10654-009-9363-6](#) PMID: [19557526](#)
67. Harding S (2003) Mortality of migrants from the Indian subcontinent to England and Wales: effect of duration of residence. *Epidemiology* 14: 287–292. PMID: [12859028](#)
68. Miller MA, Kerry SM, Dong YB, Strazzullo P, Cappuccio FR (2004) Association between the Thr715Pro P-selectin gene polymorphism and soluble P-selectin levels in a multiethnic population in South London. *Thromb Haemostasis* 92: 1060–1065.
69. Waterworth DM, Talmud PJ, Humphries SE, Wicks PD, Sagnella GA, Strazzullo P, et al. (2001) Variable effects of the APOC3-482C > T variant on insulin, glucose and triglyceride concentrations in different ethnic groups. *Diabetologia* 44: 245–248. PMID: [11270684](#)
70. Cappuccio FP, Oakeshott P, Strazzullo P, Kerry SM (2002) Application of Framingham risk estimates to ethnic minorities in United Kingdom and implications for primary prevention of heart disease in general practice: cross sectional population based study. *BMJ* 325: 1271–1276. PMID: [12458243](#)

71. Gilbert PA, Khokhar S (2008) Changing dietary habits of ethnic groups in Europe and implications for health. *Nutrition Reviews* 66: 203–215. doi: [10.1111/j.1753-4887.2008.00025.x](https://doi.org/10.1111/j.1753-4887.2008.00025.x) PMID: [18366534](https://pubmed.ncbi.nlm.nih.gov/18366534/)
72. Palloni A, Morenoff JD (2001) Interpreting the paradoxical in the hispanic paradox: demographic and epidemiologic approaches. *Ann N Y Acad Sci* 954: 140–174. PMID: [11797855](https://pubmed.ncbi.nlm.nih.gov/11797855/)
73. WHO Expert Consultation (2004) Appropriate body-mass index for Asian populations and its implications for policy and intervention strategies. *Lancet* 363: 157–163. PMID: [14726171](https://pubmed.ncbi.nlm.nih.gov/14726171/)
74. Barba C, Cavalli-Sforza T, Cutter J, Darnton-Hill I, Deurenberg P, Deurenberg-Yap M, et al. (2004) Appropriate body-mass index for Asian populations and its implications for policy and intervention strategies. *Lancet* 363: 157–163. PMID: [14726171](https://pubmed.ncbi.nlm.nih.gov/14726171/)
75. Dorairaj P, Shah P, Manhapra A, Chaturvedi V, Shah B, Karthika A, et al. (2003) Obesity and cardiovascular and metabolic disorders among South Asians living in India: Higher risk at BMI levels that are normal for western population. *Circulation* 108: 773–774.
76. Patel S, Unwin N, Bhopal R, White M, Harland J, Ayis SAM, et al. (1999) A comparison of proxy measures of abdominal obesity in Chinese, European and South Asian adults. *Diabetic Medicine* 16: 853–860. PMID: [10547213](https://pubmed.ncbi.nlm.nih.gov/10547213/)
77. Stroup DF, Berlin JA, Morton SC, Olkin I, Williamson GD, Rennie D, et al. (2000) Meta-analysis of observational studies in epidemiology: a proposal for reporting. Meta-analysis Of Observational Studies in Epidemiology (MOOSE) group. *JAMA* 283: 2008–2012. PMID: [10789670](https://pubmed.ncbi.nlm.nih.gov/10789670/)
78. Colditz GA, Burdick E, Mosteller F (1995) Heterogeneity in meta-analysis of data from epidemiologic studies: a commentary. *Am J Epidemiol* 142: 371–382. PMID: [7625401](https://pubmed.ncbi.nlm.nih.gov/7625401/)
79. Ioannidis JP, Patsopoulos NA, Rothstein HR (2008) Reasons or excuses for avoiding meta-analysis in forest plots. *BMJ* 336: 1413–1415. doi: [10.1136/bmj.a117](https://doi.org/10.1136/bmj.a117) PMID: [18566080](https://pubmed.ncbi.nlm.nih.gov/18566080/)