

**Original citation:**

NEMO-3 Collaboration (Including: Morgan, B. and Ramachers, Y.). (2015) Results of the search for neutrinoless double- $\beta$  decay in  $^{100}\text{Mo}$  with the NEMO-3 experiment. Physical Review D (Particles, Fields, Gravitation and Cosmology), 92 . 072011.

**Permanent WRAP url:**

<http://wrap.warwick.ac.uk/74451>

**Copyright and reuse:**

The Warwick Research Archive Portal (WRAP) makes this work by researchers of the University of Warwick available open access under the following conditions. Copyright © and all moral rights to the version of the paper presented here belong to the individual author(s) and/or other copyright owners. To the extent reasonable and practicable the material made available in WRAP has been checked for eligibility before being made available.

Copies of full items can be used for personal research or study, educational, or not-for-profit purposes without prior permission or charge. Provided that the authors, title and full bibliographic details are credited, a hyperlink and/or URL is given for the original metadata page and the content is not changed in any way.

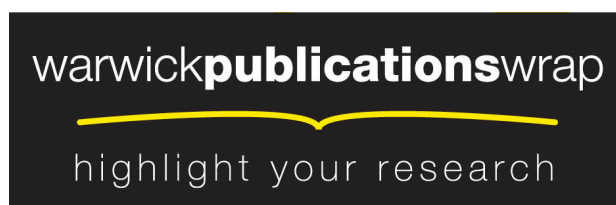
**Publisher statement:**

© 2015 American Physical Society

Published version: <http://dx.doi.org/10.1103/PhysRevD.92.072011>

**A note on versions:**

The version presented in WRAP is the published version or, version of record, and may be cited as it appears here. For more information, please contact the WRAP Team at: [publications@warwick.ac.uk](mailto:publications@warwick.ac.uk)



<http://wrap.warwick.ac.uk/>



## Results of the search for neutrinoless double- $\beta$ decay in $^{100}\text{Mo}$ with the NEMO-3 experiment

R. Arnold,<sup>1</sup> C. Augier,<sup>2</sup> J. D. Baker,<sup>3,\*</sup> A. S. Barabash,<sup>4</sup> A. Basharina-Freshville,<sup>5</sup> S. Blondel,<sup>2</sup> S. Blot,<sup>6</sup> M. Bongrand,<sup>2</sup> V. Brudanin,<sup>7,26</sup> J. Busto,<sup>8</sup> A. J. Caffrey,<sup>3</sup> S. Calvez,<sup>2</sup> C. Cerna,<sup>9</sup> J. P. Cesar,<sup>13</sup> A. Chapon,<sup>10</sup> E. Chauveau,<sup>6</sup> D. Duchesneau,<sup>11</sup> D. Durand,<sup>10</sup> V. Egorov,<sup>7</sup> G. Eurin,<sup>2,5</sup> J. J. Evans,<sup>6</sup> L. Fajt,<sup>12</sup> D. Filosofov,<sup>7</sup> R. Flack,<sup>5</sup> X. Garrido,<sup>2</sup> H. Gómez,<sup>2</sup> B. Guillon,<sup>10</sup> P. Guzowski,<sup>6</sup> R. Hodák,<sup>12</sup> A. Huber,<sup>9</sup> P. Hubert,<sup>9</sup> C. Hugon,<sup>9</sup> S. Jullian,<sup>2</sup> A. Klimenko,<sup>7</sup> O. Kochetov,<sup>7</sup> S. I. Konovalov,<sup>4</sup> V. Kovalenko,<sup>7</sup> D. Lalanne,<sup>2</sup> K. Lang,<sup>13</sup> Y. Lemièrre,<sup>10</sup> T. Le Noblet,<sup>11</sup> Z. Liptak,<sup>13</sup> P. Loaiza,<sup>2</sup> G. Lutter,<sup>9</sup> F. Mamedov,<sup>12</sup> C. Marquet,<sup>9</sup> F. Mauger,<sup>10</sup> B. Morgan,<sup>15</sup> J. Mott,<sup>5</sup> I. Nemchenok,<sup>7</sup> M. Nomachi,<sup>16</sup> F. Nova,<sup>13</sup> F. Nowacki,<sup>1</sup> H. Ohsumi,<sup>17</sup> R. B. Pahlka,<sup>13</sup> F. Perrot,<sup>9</sup> F. Piquemal,<sup>9,14</sup> P. Povinec,<sup>18</sup> P. Přidal,<sup>12</sup> Y. A. Ramachers,<sup>15</sup> A. Remoto,<sup>11</sup> J. L. Reyss,<sup>19</sup> B. Richards,<sup>5</sup> C. L. Riddle,<sup>3</sup> E. Rukhadze,<sup>12</sup> R. Saakyan,<sup>5</sup> X. Sarazin,<sup>2</sup> Yu. Shitov,<sup>7,20</sup> L. Simard,<sup>2,21</sup> F. Šimkovic,<sup>18</sup> A. Smetana,<sup>12</sup> K. Smolek,<sup>12</sup> A. Smolnikov,<sup>7</sup> S. Söldner-Rembold,<sup>6</sup> B. Soulé,<sup>9</sup> I. Štekl,<sup>12</sup> J. Suhonen,<sup>22</sup> C. S. Sutton,<sup>23</sup> G. Szklarz,<sup>2</sup> J. Thomas,<sup>5</sup> V. Timkin,<sup>7</sup> S. Torre,<sup>5</sup> V. I. Tretyak,<sup>24</sup> V. I. Tretyak,<sup>7</sup> V. I. Umatov,<sup>4</sup> I. Vanushin,<sup>4</sup> C. Vilela,<sup>5</sup> V. Vorobel,<sup>25</sup> D. Waters,<sup>5</sup> and A. Žukauskas<sup>25</sup>

(NEMO-3 Collaboration)

<sup>1</sup>*IPHC, ULP, CNRS/IN2P3, F-67037 Strasbourg, France*

<sup>2</sup>*LAL, Université Paris-Sud, CNRS/IN2P3, F-91405 Orsay, France*

<sup>3</sup>*Idaho National Laboratory, Idaho Falls, Idaho 83415, USA*

<sup>4</sup>*ITEP, 117218 Moscow, Russia*

<sup>5</sup>*UCL, London WC1E 6BT, United Kingdom*

<sup>6</sup>*University of Manchester, Manchester M13 9PL, United Kingdom*

<sup>7</sup>*JINR, 141980 Dubna, Russia*

<sup>8</sup>*CPPM, Université de Marseille, CNRS/IN2P3, F-13288 Marseille, France*

<sup>9</sup>*CENBG, Université de Bordeaux, CNRS/IN2P3, F-33175 Gradignan, France*

<sup>10</sup>*LPC Caen, ENSICAEN, Université de Caen, CNRS/IN2P3, F-14050 Caen, France*

<sup>11</sup>*LAPP, Université de Savoie, CNRS/IN2P3, F-74941 Annecy-le-Vieux, France*

<sup>12</sup>*Institute of Experimental and Applied Physics, Czech Technical University in Prague, CZ-12800 Prague, Czech Republic*

<sup>13</sup>*University of Texas at Austin, Austin, Texas 78712, USA*

<sup>14</sup>*Laboratoire Souterrain de Modane, F-73500 Modane, France*

<sup>15</sup>*University of Warwick, Coventry CV4 7AL, United Kingdom*

<sup>16</sup>*Osaka University, 1-1 Machikaney arna Toyonaka, Osaka 560-0043, Japan*

<sup>17</sup>*Saga University, Saga 840-8502, Japan*

<sup>18</sup>*FMFI, Comenius University, SK-842 48 Bratislava, Slovakia*

<sup>19</sup>*LSCE, CNRS, F-91190 Gif-sur-Yvette, France*

<sup>20</sup>*Imperial College London, London SW7 2AZ, United Kingdom*

<sup>21</sup>*Institut Universitaire de France, F-75005 Paris, France*

<sup>22</sup>*Jyväskylä University, FIN-40351 Jyväskylä, Finland*

<sup>23</sup>*MHC, South Hadley, Massachusetts 01075, USA*

<sup>24</sup>*Institute for Nuclear Research, MSP 03680, Kyiv, Ukraine*

<sup>25</sup>*Charles University in Prague, Faculty of Mathematics and Physics, CZ-12116 Prague, Czech Republic*

<sup>26</sup>*National Research Nuclear University MEPhI, 115409 Moscow, Russia*

(Received 17 June 2015; published 21 October 2015)

The NEMO-3 detector, which had been operating in the Modane Underground Laboratory from 2003 to 2010, was designed to search for neutrinoless double- $\beta$  ( $0\nu\beta\beta$ ) decay. We report the final results of a search for  $0\nu\beta\beta$  decays with 6.914 kg of  $^{100}\text{Mo}$  using the entire NEMO-3 data set with a detector live time of 4.96 yr, which corresponds to an exposure of 34.3 kg · yr. We perform a detailed study of the expected background in the  $0\nu\beta\beta$  signal region and find no evidence of  $0\nu\beta\beta$  decays in the data. The level of observed background in the  $0\nu\beta\beta$  signal region [2.8–3.2] MeV is  $0.44 \pm 0.13$  counts/yr/kg, and no events are observed in the interval [3.2–10] MeV. We therefore derive a lower limit on the half-life of  $0\nu\beta\beta$  decays in  $^{100}\text{Mo}$  of

\*Deceased

$T_{1/2}(0\nu\beta\beta) > 1.1 \times 10^{24}$  yr at the 90% confidence level, under the hypothesis of decay kinematics similar to that for light Majorana neutrino exchange. Depending on the model used for calculating nuclear matrix elements, the limit for the effective Majorana neutrino mass lies in the range  $\langle m_\nu \rangle < 0.33\text{--}0.62$  eV. We also report constraints on other lepton-number violating mechanisms for  $0\nu\beta\beta$  decays.

DOI: [10.1103/PhysRevD.92.072011](https://doi.org/10.1103/PhysRevD.92.072011)

PACS numbers: 23.40.-s, 21.10.-k, 27.60.+j

## I. INTRODUCTION

Since neutrinos are the only fermions that carry no electric charge, they can be represented by a Majorana field for which the distinction between matter and antimatter vanishes. The Majorana nature of neutrinos could play a fundamental role in many extensions of the Standard Model. For instance, the seesaw mechanism [1], which requires the existence of a Majorana neutrino, naturally explains the origin of small neutrino masses. A Majorana neutrino would provide a framework for lepton number violation, and in particular for the leptogenesis process [2], which could explain the observed matter-antimatter asymmetry in the Universe.

The observation of neutrinoless double- $\beta$  ( $0\nu\beta\beta$ ) decay would prove that neutrinos are Majorana particles [3] and that lepton number is not conserved. The most commonly studied mechanism of  $0\nu\beta\beta$  decay is the exchange of a Majorana neutrino. However, other mechanisms such as the existence of right-handed currents in the electroweak interaction, the exchange of supersymmetric particles with  $R$ -parity violating couplings, or the additional emission of a Majoron particle, are possible. Except for the case of Majoron emission, the experimental signature of  $0\nu\beta\beta$  decays is the emission of two electrons with a total energy  $E_{\text{tot}}$  that is equal to the transition energy  $Q_{\beta\beta}$  of the decay.

For a given mechanism and isotope, the  $0\nu\beta\beta$  decay half-life depends on the phase space factors and on the nuclear matrix element (NME). The decay half-lives of different isotopes can differ by a few orders of magnitude with large theoretical uncertainties of the NME calculations. It is therefore essential to search for  $0\nu\beta\beta$  decays in several isotopes.

The NEMO-3 detector [4] was operated from 2003 until 2010 in the Modane Underground Laboratory (LSM) to measure two-neutrino double- $\beta$  ( $2\nu\beta\beta$ ) decays of seven isotopes in the form of thin foils and to search for  $0\nu\beta\beta$  decays. The full topology of double- $\beta$  decays is reconstructed by combining information from a calorimeter and a tracking detector that are both distinct from the source foils. We measure the contributions from different background processes separately by exploiting specific event topologies. The NEMO-3 design and its capacity to identify electrons, positrons,  $\gamma$  rays, and  $\alpha$  particles are unique in enabling us to reject background processes very efficiently.

The isotope  $^{100}\text{Mo}$  represents the largest source sample in NEMO-3 with a mass of 6.914 kg and  $Q_{\beta\beta} = 3034.40 \pm 0.17$  keV [5]. A result based on a subset of the data had previously been published in [6]. We reported as rapid

communications [7] the results of a search for  $0\nu\beta\beta$  decays for the entire data set, corresponding to a live time of 4.96 yr and an exposure of 34.3 kg  $\cdot$  yr of  $^{100}\text{Mo}$ . In this paper, we describe this analysis in more detail.

The NEMO-3 detector is introduced in Sec. II, and the energy and timing calibration of the detector are described in Sec. III. Selection criteria for  $0\nu\beta\beta$  candidates are given in Sec. IV. The methodology and the results of the measurement of the different background components are presented in Sec. V. Results of the search for  $0\nu\beta\beta$  decays are summarized in Sec. VI.

## II. THE NEMO-3 DETECTOR

The distinctive feature of the NEMO-3 detection method is a full reconstruction of the double- $\beta$  decay topology using tracking in three dimensions as well as calorimetric and timing information. It provides not only the total energy  $E_{\text{tot}}$  of the two simultaneously emitted electrons, but also the single energy of each electron and their angular distribution at the emission point from the foil. A detailed description of the NEMO-3 detector can be found in [4].

The thin source foils with a density of 40–60 mg/cm<sup>2</sup> containing the active double- $\beta$  decay isotope are surrounded by a tracking detector comprising open drift cells and a calorimeter composed of plastic scintillators. The source foils are distributed over a cylindrical surface of about 20 m<sup>2</sup>, which is segmented into 20 sectors of equal size, as shown in Fig. 1.

Several double- $\beta$  decay sources are installed in the detector. The main isotope used to search for  $0\nu\beta\beta$  decays is  $^{100}\text{Mo}$  with a total mass of 6.914 kg. Smaller amounts of other isotopes are mainly used to measure  $2\nu\beta\beta$  decays, comprising  $^{82}\text{Se}$  (0.932 kg, two sectors),  $^{116}\text{Cd}$  (0.405 kg, one sector),  $^{130}\text{Te}$  (0.454 kg, two sectors),  $^{150}\text{Nd}$  (36.55 g),  $^{96}\text{Zr}$  (9.4 g), and  $^{48}\text{Ca}$  (7 g). In addition, 1.5 sectors of natural tellurium, corresponding to 0.614 kg of  $\text{TeO}_2$ , and one sector equipped with pure copper (0.621 kg) are used to perform measurements of backgrounds from processes other than double- $\beta$  decay. There are seven foil strips in each sector. The mean length of the strips is 2480 mm with a width of 65 mm for the five central strips and 63 mm for the two edge strips.

There are two types of  $^{100}\text{Mo}$  foils, metallic and composite. The metallic foils were produced in vacuum by heating and rolling  $^{100}\text{Mo}$  monocrystals in the form of foils. To produce the composite foils, thin and chemically purified  $^{100}\text{Mo}$  powder was mixed with polyvinyl alcohol (PVA) glue and then deposited between Mylar foils with a

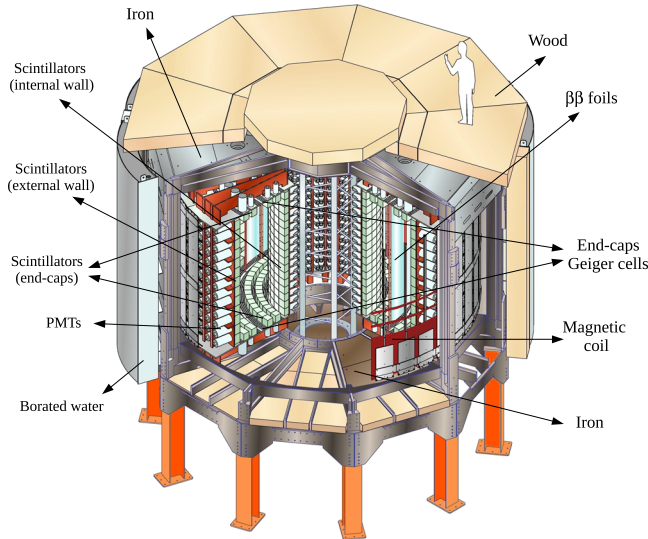


FIG. 1 (color online). A schematic view of the NEMO-3 detector, showing the double- $\beta$  source foils, the tracking chamber, the calorimeter composed of scintillator blocks and PMTs, the magnetic coil and the shield.

thickness of  $19\ \mu\text{m}$ . The metallic Mo foils were placed in sectors 02, 03 and 04. There are also five additional strips in sector 1 and two strips in sector 5. The total surface of metallic foils is  $43924\ \text{cm}^2$ . The total mass of  $^{100}\text{Mo}$  in metallic foils is  $2479\ \text{g}$  and the average percentage of  $^{100}\text{Mo}$  enrichment is  $97.7\%$ . It corresponds to an average surface density of the metallic foils of  $57.9\ \text{mg}/\text{cm}^2$ . The composite Mo foils were placed in sectors 10, 11, 12, 13, 14, 15, and 16. There are also two additional strips in sector 01 and three strips in sector 05. The total surface of composite Mo foils is  $84410\ \text{cm}^2$ . The total mass of  $^{100}\text{Mo}$  in composite foils is  $4435\ \text{g}$  and the average percentage of  $^{100}\text{Mo}$  enrichment is  $96.5\%$ . The total mass of components (Mo, PVA and Mylar) is  $5569\ \text{g}$ . It corresponds to an average surface density of the composite foils of  $66.0\ \text{mg}/\text{cm}^2$ .

On both sides of the source foils, a gaseous tracking detector comprising 6180 open drift cells operating in Geiger mode provides three-dimensional track information. We use a cylindrical coordinate system with the  $z$ -axis pointing upwards. The drift cells are oriented parallel to the  $z$ -axis and provide measurements of the transverse and longitudinal coordinates of the track. To minimize multiple scattering, the gas is a mixture of  $94.9\%$  helium,  $4\%$  ethyl alcohol,  $1\%$  argon, and  $0.1\%$  water vapor for a total volume of about  $28.5\ \text{m}^3$ .

The basic cell consists of a central anode wire surrounded by eight ground wires. All the wires are  $50\ \mu\text{m}$  in diameter and  $2.7\ \text{m}$  long. On each end of the cell is the cathode ring. When a charged particle crosses a cell the ionized gas yields around six electrons per centimeter. These secondary electrons drift towards the anode wire at a

speed of around  $1\ \text{to}\ 2\ \text{cm}/\mu\text{s}$  depending on the distance of the electrons to the anode. Measurements of these drift anodic times are used to reconstruct the transverse position of the particle in the cells. In the Geiger regime, the avalanche near the anode wire develops into a Geiger plasma which propagates along the wire at a speed of about  $6.5\ \text{cm}/\mu\text{s}$ . The arrival of the plasma at the two ends of the wire is detected with the cathode rings mentioned above. The two propagation times of the plasma are used to determine the longitudinal position of the particle as it passes through the cell.

To read-out the drift cells, the analog Geiger signals from the anode wires and the two cathode rings signals are first amplified and then compared to anode and cathode thresholds. For signals exceeding the thresholds, the anode signal starts four time-to-digital converter (TDC) scalers. The first three are for the anode and the two cathode contents which are measured with a 12-bit TDC and give times between  $0$  and  $82\ \mu\text{s}$ . The last TDC scaler is 17-bits, which can provide time measurements between  $0$  and  $2.6\ \text{ms}$ . It is used for delayed  $\alpha$  particle tagging. The cathode TDCs are stopped by the cathode signals while the anode TDCs are stopped by a signal sent by the general trigger.

The method for the track reconstruction and its calibration, and the tracking performances are presented in [4]. The average transverse and longitudinal resolutions of the Geiger cells are  $0.5\ \text{mm}$  and  $0.8\ \text{cm}$ , respectively. If the two electron tracks from a double- $\beta$  decay are constrained to originate from the same vertex in the foil, the transverse and longitudinal vertex resolutions, defined as the rms of the distance between the intersection points of the two individual tracks with the foil, are  $0.6$  and  $1.0\ \text{cm}$ , respectively. These resolutions are sufficient to discriminate between decays from different source foils and isotopes.

The energy and time of flight of particles are measured by polystyrene scintillators surrounding the tracking detector. We use the time of flight to discriminate between signal events emitted from the foil and background events where particles crossed the foil. To further increase acceptance, the end caps (the top and bottom parts of the detector, named petals) are also equipped with scintillators in the spaces between the drift cell layers. The calorimeter is composed of 1940 optical modules, which consist of large scintillator blocks, with a typical size of  $(20 \times 20 \times 10)\ \text{cm}^3$ , coupled to low radioactive photo-multipliers (PMTs).

The analog PMTs signals are sent to both a low and a high threshold leading edge discriminator. If the PMT signal exceeds the lower level threshold it starts a TDC measurement and opens a charge integration gate for  $80\ \text{ns}$ . The high threshold discriminator works as a one shot that delivers a calorimeter event signal to the trigger logic which reflects the number of channels that have exceeded the upper threshold. This level is used to trigger the system (first level trigger) if the desired multiplicity of active PMTs



is achieved. The trigger logic then produces a signal called STOP-PMT, which is sent to all the calorimeter electronic channels, to save their data. So the TDCs are stopped and the integrated charge is stored. Then digital conversions begin. At the same time, a signal is sent to the calorimeter acquisition processor, which permits the read-out of the digitized times and charges for the active channels. The analog-to-digital conversions of the charge and the timing signal are made with two 12-bit analog-to-digital converters (ADCs). The energy resolution is 0.36 pC/channel (about 3 keV/channel) and the time resolution is 53 ps/channel. If any PMT signal exceeds the high level threshold then the TDC measurement and charge integration are aborted and the system resets after 200 ns.

The external wall of the calorimeter is equipped with 5-inch PMTs and the internal wall with 3-inch PMTs, and the end caps with both PMT types. The average energy resolution of the calorimeter is  $\sigma_E/E = 5.8\%/\sqrt{E(\text{MeV})}$  for the scintillators equipped with 5-inch PMTs, and  $\sigma_E/E = 7.2\%/\sqrt{E(\text{MeV})}$  for the scintillators equipped with 3-inch PMTs.

Photons are identified as hits in the calorimeter where no electron track points at the scintillator block. The scintillator blocks with a thickness of 10 cm yield a high photon detection efficiency of 51% (33%) for a photon of energy 1 MeV (3 MeV) at a normal angle of incident.

A solenoidal magnet surrounding the detector provides a magnetic field of 25 G used to discriminate between electrons and positrons with an efficiency of about 95% at an electron/positron energy of 1 MeV. An external shield with a thickness of 19 cm constructed of low-radioactive iron, a borated water shield, and a wood shield surround the detector to reduce background from external  $\gamma$  rays and neutrons. Calibrations are performed by inserting calibrated radioactive sources into the detector through dedicated tubes installed between each sector in the plane of the foils.

During the first data taking period, labeled Phase I, from February 2003 until October 2004, the dominant background to the  $0\nu\beta\beta$  signal was contamination from radon ( $^{222}\text{Rn}$ ) in the tracking chamber. Radon contamination in the tracking chamber is measured by detecting electrons from  $\beta$  decay of  $^{214}\text{Bi}$ , accompanied by a delayed  $\alpha$  particle from  $^{214}\text{Po}$  decay. To detect delayed  $\alpha$  particles, every hit inside the wire chamber arriving with a delay of up to 700  $\mu\text{s}$  is read-out with dedicated electronics. The  $^{222}\text{Rn}$  activity of about 30 mBq/m<sup>3</sup> inside the tracking chamber during Phase I is caused by a low rate of diffusion of  $^{222}\text{Rn}$  from the laboratory hall, with an activity of around 15 Bq/m<sup>3</sup>, into the detector. This contamination was significantly reduced, by a factor of about 6, by the installation of a radon-tight tent enclosing the detector and a radon trapping facility in December 2004. The second data taking period between December 2004 until the end of running in December 2010 (Phase II) therefore has a reduced radon gas contamination of around

5 mBq/m<sup>3</sup>. Data from both phases are presented in this paper.

The trigger conditions used for recording double- $\beta$  candidate events require at least one PMT signal with an amplitude greater than 50 mV, corresponding to an energy of  $>150$  keV deposited in the associated scintillator, in coincidence with at least three hits in the tracking detector within a time window of 6  $\mu\text{s}$  recorded in the same half sector of the detector as the scintillator hit. Additional PMT signals with an amplitude of  $>10$  mV, corresponding to an energy deposit of  $>30$  keV, are also recorded if they coincide within a time window of 80 ns. The trigger rates of the data acquisition are about 7 Hz for Phase I and about 5 Hz for Phase II. The dead time of the data acquisition is measured to be 1% and is treated as an inefficiency.

Monte Carlo (MC) simulations are performed with a GEANT3-based [8] detector simulation using the DECAY0 [9] event generator. The time-dependent status and conditions of the detector and its performance are taken into account in the detector simulation.

In this paper, we present a search for  $0\nu\beta\beta$  decays using data recorded between February 2003 and October 2010, with a live time of 1.02 yr in Phase I and 3.94 yr in Phase II, and a total mass of 6914 g of  $^{100}\text{Mo}$  in the form of metallic and composite foils. This corresponds to a total exposure of 34.3 kg  $\cdot$  yr.

### III. CALIBRATION

#### A. Energy scale calibration and resolution

Absolute energy calibrations of the calorimeter optical modules were carried out every month using  $^{207}\text{Bi}$  sources which provide internal conversion electrons with energies of 482 and 976 keV from the  $K$  lines, with branching ratios of 1.5% and 7.1%, respectively. Each calibration run has a length of about 24 hours. In addition, a dedicated long run was performed using a  $^{90}\text{Sr}$  source since the end point of the  $\beta$  spectrum of  $^{90}\text{Y}$ , a daughter nucleus of  $^{90}\text{Sr}$ , provides an additional high-energy point at an energy of 2279 keV.

The response of each scintillator block to electrons with an energy of 976 keV is measured as a function of the impact position of the electron track on the entrance surface of the scintillator using  $^{207}\text{Bi}$  calibration runs. A dependence on impact position was previously observed with data obtained with the electron spectrometer during the NEMO-3 calorimeter assembly. The impact position is sampled by dividing the entrance surface of the scintillator blocks in  $3 \times 3$  equal squares for the blocks equipped with 3-inch PMTs, and  $5 \times 5$  equal squares for the blocks equipped with 5-inch PMTs, corresponding to  $3 \times 3$  and  $5 \times 5$  correction points respectively. The impact corrections are small for the scintillator blocks equipped with 3-inch PMTs, typically 1%–2%, but they can increase up to 10% for 5-inch PMT scintillator blocks. This effect is corrected

offline by applying different impact correction factors for each scintillator block type.

The linearity of the PMTs has been verified with a dedicated light injection test during the construction phase. Upper limits on the nonlinearity of the PMTs were found to be  $<1\%$  for energies  $<4$  MeV, corresponding to the energy range of interest for double- $\beta$  decay measurements. It is shown by Monte-Carlo simulations that a nonlinearity lower than  $1\%$  has no effect in the final  $\beta\beta 0\nu$  analysis.

The linear fit combining the energy calibration obtained with the two  $^{207}\text{Bi}$  energy peaks and the end point of the  $^{90}\text{Y}$   $\beta$  spectrum does not intersect with the origin, because the scintillator response for electrons at low energies (below the energy threshold of 200 keV) is nonlinear. The extrapolated energy offset at a charge of  $Q_{\text{ADC}} = 0$  is on average  $33 \pm 3$  keV. It is determined after subtracting the electronic pedestal of the ADCs used to read-out the PMTs and accounting for an impact point correction. This offset is taken into account in the energy calculation. It is shown by Monte-Carlo simulations that the uncertainty on the energy offset measurement is negligible for the final  $\beta\beta 0\nu$  analysis. An example of a linear fit for one counter can be found in Ref. [4].

The rare internal conversion electron  $K$  line of  $^{207}\text{Bi}$  with an energy of 1682 keV has a small branching ratio of 0.02%. It is used to determine the systematic uncertainty on the energy scale from the difference between the reconstructed peak position in data and MC simulation, which is  $<0.2\%$  for 99% of the optical modules. It is shown by Monte-Carlo simulations that a 0.2% uncertainty on the energy scale is negligible for the final  $\beta\beta 0\nu$  analysis. The remaining optical modules of the calorimeter with incorrect reconstruction of the energy peak are rejected in the analysis. A typical energy spectrum measured with a single optical module is shown in Fig. 2.

Figure 3 shows the average energy resolution as a function of running time for the different types of scintillator blocks and PMTs. The resolution at an electron energy of 1 MeV ranges from  $\sigma_E/E = 5.7\%$  to  $8.0\%$ , depending on the type of block and the data taking period. A deterioration of the energy resolution of 0.03%–0.05% and 0.06%–0.14% per year is observed for the blocks equipped with 5- and 3-inch PMTs, respectively. This drift might be caused by the residual helium concentration in the air surrounding the detector that leads to after-pulsing of the PMTs. The helium concentration in the central tower of the NEMO-3 detector, where most of the 3-inch PMTs are located, is higher than in other regions of the detector, which could explain the larger drift in this region.

The expected full width at half maximum (FWHM) of the spectrum of two electrons energy sum in  $0\nu\beta\beta$  decays is 350 keV. It is a convolution of the energy resolution of the calorimeter and of the non-Gaussian fluctuations in the electron energy loss, which occur mainly in the source foil and to a lesser extent in the tracking detector. In the absence

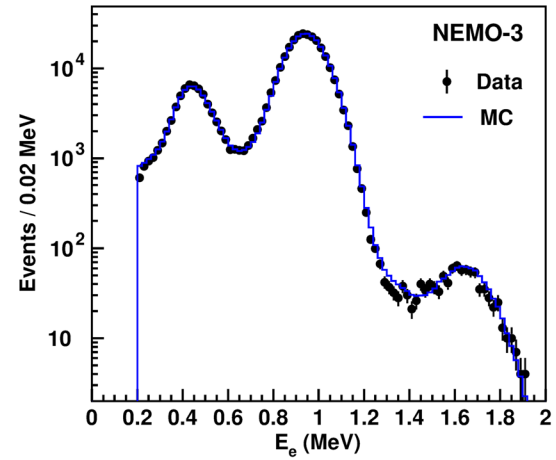


FIG. 2 (color online). Energy spectrum of a typical scintillator block, measured with the  $^{207}\text{Bi}$  calibration sources and summed over all the calibration runs. The data points are compared to a histogram of the energy spectrum calculated by the MC simulation. The peaks correspond to the energies of electrons from the main 482, 976, and 1682 keV internal conversion  $K$  lines of  $^{207}\text{Bi}$ .

of energy loss fluctuations in the foil, the expected FWHM would be about 250 keV.

After close to eight years of stable operation of the experiment, fewer than 10% of PMTs had to be turned off

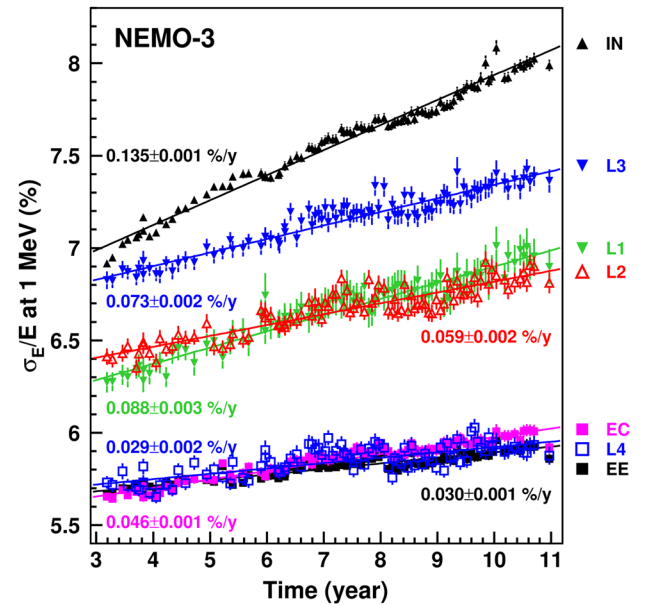


FIG. 3 (color online). Average energy resolution  $\sigma_E/E$  measured at  $E = 1$  MeV for the different types of scintillator blocks and sizes of PMTs as a function of NEMO-3 running time. Here, IN refers to the calorimeter blocks with 3-inch PMTs located in the central tower (inner wall of the calorimeter), L1, L2 and L3 refer to 3-inch PMTs located on the upper and lower end caps, EC and EE refer to 5-inch PMTs located on the external wall, and L4 to 5-inch PMTs on the upper and lower end caps of the calorimeter (see Fig. 3 in [4] for the exact location of the different types of scintillator).

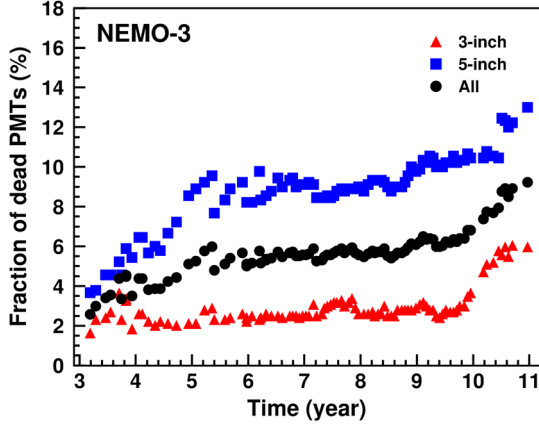


FIG. 4 (color online). Fraction of dead PMTs (in %) as a function of NEMO-3 running time for 3- and 5-inch PMTs, and for all PMTs.

because they displayed unstable gain or noisy signals. The fraction of dead PMTs as a function of the NEMO-3 running time is presented in Fig. 4. The fraction of PMTs with noisy signals in the recorded data is estimated by measuring the random coincidence rate of scintillator hits with a constant timing distribution. The same fraction of PMTs is randomly rejected in the MC simulation, leading to a reduction of the  $0\nu\beta\beta$  detection efficiency of 0.9% in Phase I and 2.4% in Phase II.

### B. Laser survey

The stability of the PMT gains between two consecutive absolute  $^{207}\text{Bi}$  calibration runs is maintained using dedicated laser runs which were performed twice daily. The laser beam is split and transmitted to two different devices to calibrate the 3- and 5-inch PMTs separately. A description of the laser system is given in [4]. Data taking is divided into successive laser survey periods that are separated by major incidents such as a general shutdown of the high voltage crates or any other event that could cause a discontinuity in the operating conditions of the PMTs.

The laser survey measures the time dependence of the average response of all PMTs of the same size to monitor the variation of gains. The mean energies  $\langle e_3(t) \rangle$  and  $\langle e_5(t) \rangle$  of the two different sets of 3- and 5-inch PMTs calculated for each laser run at a recording time  $t$  are given by

$$\langle e_{3,5}(t) \rangle = \frac{\sum_k g_k^{\text{calib}}(t) Q_{\text{ADC}}(k, t)}{N_{3,5}(t)}, \quad (1)$$

where the sum extends over the 3- or 5-inch PMTs. Here,  $Q_{\text{ADC}}(k, t)$  and  $g_k^{\text{calib}}(t)$  are the recorded charge after pedestal subtraction and the laser calibration constant for the PMT labeled  $k$  and for the laser run recorded at time  $t$ . The numbers of 3- and 5-inch PMTs recorded during a laser run are  $N_3(t)$  and  $N_5(t)$ , respectively. The parameters  $\eta(k, t)$  are calculated for each PMT

$$\eta(k, t) = \frac{g_k^{\text{calib}}(t) Q_{\text{ADC}}(k, t)}{\langle e_{3,5}(t) \rangle} \quad (2)$$

depending on its type. The parameters  $\eta(k, t)$  are divided by  $\langle \eta_0(k) \rangle$ , which is the mean value of  $\eta(k, t)$  during the associated absolute energy  $^{207}\text{Bi}$  calibration run, to calculate the final laser correction factor of

$$C(k, t) = \eta(k, t) / \langle \eta_0(k) \rangle. \quad (3)$$

The time dependence of the correction factors is analyzed to characterize the level of stability of the PMT gains during data taking. A large change of the correction factor or discontinuities during a period between two absolute energy calibrations is interpreted as an instability, and the corresponding PMT and associated events are rejected for that period. For each PMT, we estimate its stability during that period, by determining the number of laser runs for which the correction factor deviates 5%. During the entire data taking period, 82% of PMTs are considered to be stable. Taking into account that more than 90% of the data are recorded with a reliable laser survey, the efficiency to select a double- $\beta$  event is reduced by 25.2% in Phase II when the laser survey is applied, as reported in Table II. The efficiency reduction is 38.6% in Phase I because of a less stable laser during this first phase of data. The distribution of the laser correction factors for all laser runs is shown in Fig. 5 for the stable PMTs.

The reliability of the laser survey procedure is validated by analyzing a pure sample of electrons with an energy close to the end point of  $Q_\beta = 3.27$  MeV in the  $\beta$  energy spectrum of  $^{214}\text{Bi}$  decays occurring in the tracking chamber. Any excess in data over the MC expectation around  $Q_\beta$  would be a sign of unstable PMT gains. The events are selected by requiring electrons in coincidence with a delayed  $\alpha$  track from the  $^{214}\text{Bi}$ - $^{214}\text{Po}$  cascade (“BiPo events”).

The entire data set is used in this analysis. The selection of BiPo events is similar to the one used for the radon

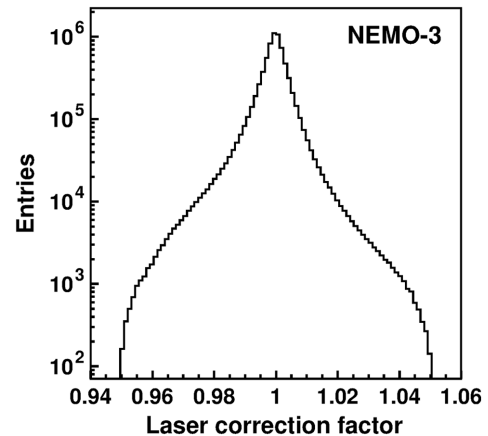


FIG. 5. Distribution of the laser correction factors calculated for all laser runs and for all stable PMTs used in the analysis.

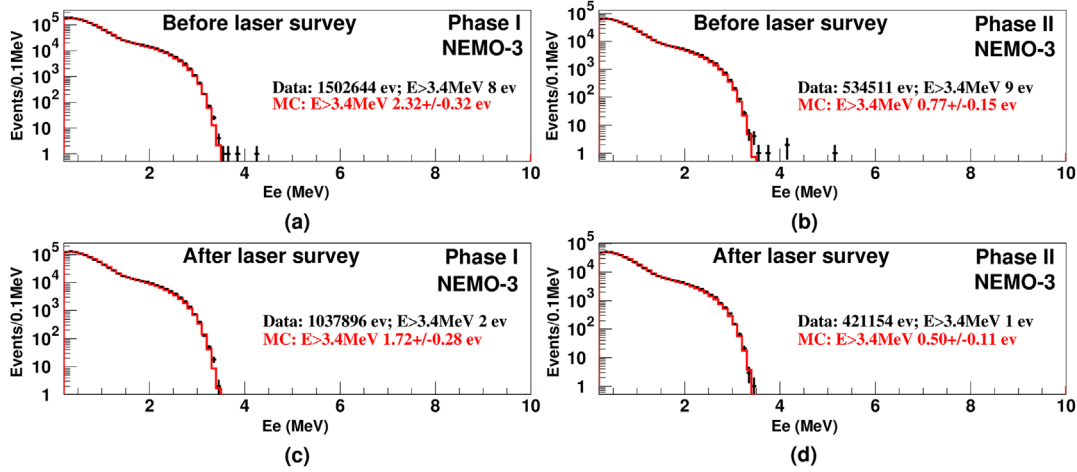


FIG. 6 (color online). Energy spectrum of electrons from  $\beta$  decay of  $^{214}\text{Bi}$  measured using BiPo events inside the tracking detector, without laser survey [(a) and (b)] and after laser survey [(c) and (d)] for Phase I [(a) and (c)] and Phase II [(b) and (d)]. The data are compared to a MC simulation. The excess of electrons observed at  $E_e > 3.4$  MeV in data are caused by PMTs with unstable gains. They are rejected by the laser correction (see Table I).

background measurement, described in Sec. V B. Here, only BiPo events with a vertex inside the tracking chamber are selected, and the electron track length is restricted to  $> 45$  cm. Electrons crossing the source foils are rejected, since they could have lost energy in the foils.

To minimize the proportion of refiring Geiger cells, we require the  $\alpha$  delay time to be  $> 140$   $\mu\text{s}$  for events with only one delayed hit, and  $> 70$   $\mu\text{s}$  for  $> 1$  hits. The delay time distributions are analyzed separately for each Geiger plane, on each side of the source foils, and for 1, 2, 3, and  $> 3$  delayed hits. Regions within the tracking chamber with a significantly increased fraction of random coincidences or refiring cells are excluded. These effects are therefore negligible in the selected data set.

The electron energy spectra obtained from this analysis are shown in Fig. 6, for Phases I and II separately, before and after applying the laser corrections. They are compared to the expected background from the MC simulation, assuming the  $^{214}\text{Bi}$  activity on the surfaces of wires and foils, and the  $^{214}\text{Bi}$  activity inside the foils described in Sec. V. The number of data and MC events with  $E_e > 3.4$  MeV, without laser correction and after applying the laser correction is given in Table I. Spurious events observed beyond the end point are well rejected after applying the laser survey. It demonstrates the reliability of the laser survey to reject false high energy events with a wrong recorded energy.

TABLE I. Numbers of BiPo events with  $E_e > 3.4$  MeV.

	Phase 1		Phase 2	
	Data	MC	Data	MC
No laser correction	8	$2.32 \pm 0.32$	9	$0.77 \pm 0.15$
With laser correction	2	$1.72 \pm 0.28$	1	$0.50 \pm 0.11$

### C. Timing calibration and time of flight

Time-of-flight measurements are used to discriminate between two-electron events from double- $\beta$  decays emitted from the source foil and events where an external electron crosses the detector and foil. The crossing electron in these events could be reconstructed as two separate tracks with a common vertex.

The time calibration of the optical modules takes into account both the individual absolute time shift of each optical module and a time-vs-charge dependence induced by the effect of leading edge discriminators. The calibrated time,  $t(i)$ , used for a time-of-flight calculation for counter number  $i$  is

$$t(i) = tdc(i) - t_s(i) - f(Q(i)), \quad (4)$$

where  $tdc(i)$  is the TDC measurement,  $t_s(i, t)$  is the time shift, and  $f(Q(i))$  is the time-charge correction function, which correct the measurement of the TDC as a function of the charge  $Q$  (with the formula given in [4]).

The absolute time shifts are measured individually for each optical module, using  $(e^-, \gamma)$  events selected from the absolute energy calibration runs carried out with  $^{207}\text{Bi}$  sources using the relation

$$t_s(i) = \frac{\sum_{N_i} (\Delta t_{tof}^{j,i} + \Delta tdc^{j,i} + f(Q(j)) - f(Q(i)) + t_s(j))}{N_i}, \quad (5)$$

where  $\Delta t_{tof}^{j,i} = t_{tof}(j) - t_{tof}(i)$  is the difference between the calculated times of flight  $t_{tof}$  of the electron and the  $\gamma$ ,  $\Delta tdc^{j,i} = tdc(j) - tdc(i)$ , and  $N_i$  is the number of selected  $(e^-, \gamma)$  events with the optical module  $i$  hit by the electron.



The time-vs-charge correction functions  $f(Q)$  are measured for each of the seven scintillator block types by using crossing-electron events from a dedicated run with an external Am-Be fast neutron source. Fast neutrons are thermalized mostly in the scintillators. Then  $\gamma$  are created by the capture of the thermalized neutrons in the copper walls. If a  $\gamma$  produces an electron by Compton effect in the scintillator, this electron can escape and crosses the tracking chamber, producing a crossing-electron event. The correction functions are measured using the relation

$$f(Q(i)) = \Delta tdc^{i,j} - (t_s(i) - t_s(j)) + f(Q(j)), \quad (6)$$

where  $\Delta tdc^{i,j} = t_{tof}(i) + t_{tof}(j)$  is the calculated time of flight for the electron to cross the tracking detector from the optical module  $j$  to the optical module  $i$ . The values of  $f(Q(i))$  are grouped according to the seven scintillator block types, and then used to produce the time-vs-charge  $f(Q)$  distribution that is then fitted with a formula using four parameters  $p_k$ :

$$f(Q) = p_1 - \frac{p_2}{p_3 \times \sqrt{Q} + p_4}. \quad (7)$$

Since the absolute time shifts and the time-vs-charge correction functions are both used in the two calibration relations (5) and (6), an iterative procedure is required to determine them. First the absolute time shifts are calculated according to Eq. (5) with initial values of the time-vs-charge correction functions obtained with laser runs and initial values of the time shifts set to zero. Then the time-vs-charge correction functions are calculated using Eq. (6). These new correction functions are then used to calculate the absolute time shifts, and so on. Successive iterations are performed until a convergence is obtained.

The daily laser surveys are used to identify and correct any variation of the TDC response. This laser timing correction is calculated separately for each optical module and laser survey run.

The average timing resolution of a scintillator hit is about 250 ps for a 1 MeV electron.

The time-of-flight analysis is based on a comparison between the measured and expected time differences of the two scintillator hits. The expected time of flight is calculated assuming two different hypotheses: the external hypothesis corresponding to a crossing electron and the internal hypothesis corresponding to two electrons being emitted simultaneously from the same vertex on the foil in a double- $\beta$  decay. The time-of-flight calculation also accounts for the length of the tracks and the energy loss in the tracking detector. To correctly take into account uncertainties on the timing measurement, we calculate separate probabilities for internal two-electron events ( $P_{\text{int}}$ ) and external crossing-electron events ( $P_{\text{ext}}$ ). The distributions of the difference  $\Delta T$  between the measured

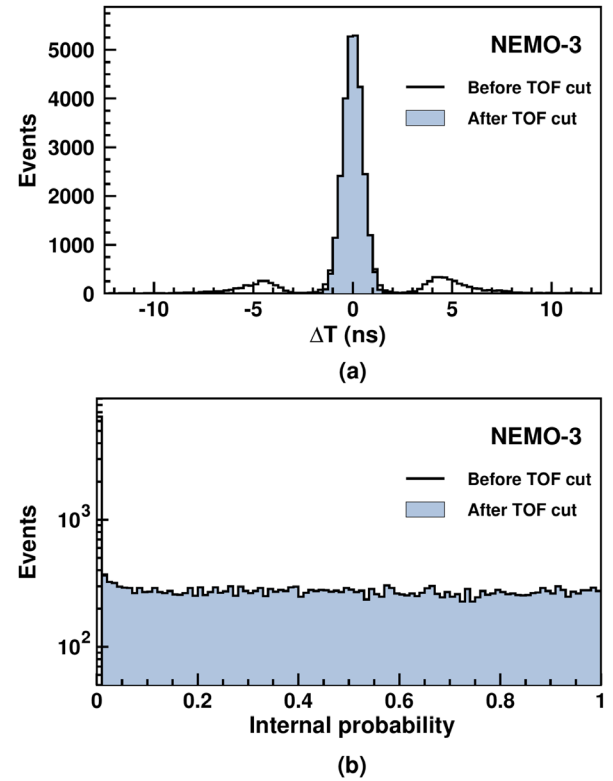


FIG. 7 (color online). Distributions of the difference  $\Delta T$  between the measured and expected time differences of scintillator hits for the internal hypothesis (a) and the internal probability  $P_{\text{int}}$  (b) for two-electron events. The superimposed shaded histogram shows events with  $P_{\text{int}} > 1\%$ .

and theoretical time differences of the two scintillator hits, calculated assuming the internal hypothesis, is shown in Fig. 7(a) for the full sample of two-electron events selected using all criteria described in Sec. IV, except the requirement on the time of flight. The  $P_{\text{int}}$  distribution shown in Fig. 7(b) is constant above  $P_{\text{int}} = 1\%$ , as expected for double- $\beta$  decays, while the peak at  $P_{\text{int}} < 1\%$  corresponds to crossing-electron events. Internal double- $\beta$  events emitted from the source are centred around  $\Delta T = 0$  ns, while crossing-electron events from external background sources have  $|\Delta T| > 3$  ns. The rms of the  $\Delta T$  distribution for  $P_{\text{int}} > 1\%$  is 490 ps.

#### IV. SELECTION OF DOUBLE- $\beta$ DECAY EVENTS AND EFFICIENCY

Candidate double- $\beta$  decay events are selected by requiring exactly two electron tracks. Events with more than two tracks are rejected.

- (i) Each track must be associated with a scintillator hit, and the extrapolated track must hit the front face of the scintillator block and not the lateral side of petal blocks. The associated scintillator hits must be isolated, i.e., no hits are found in neighboring scintillator blocks, and only a single track can be

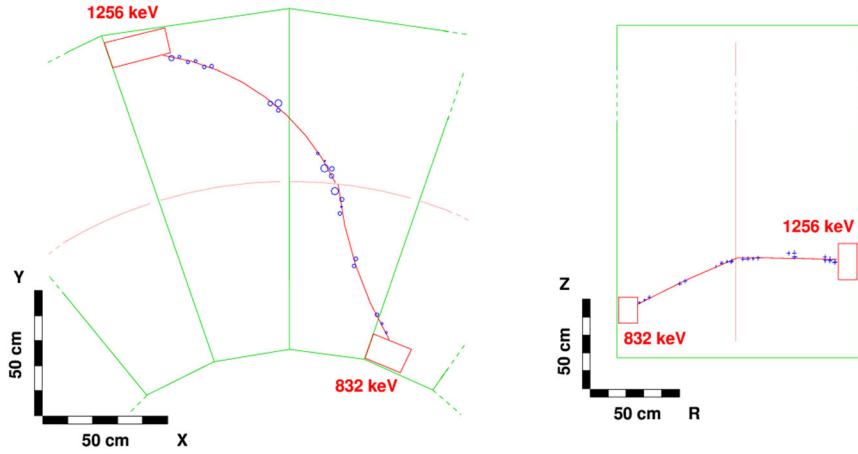


FIG. 8 (color online). Transverse and longitudinal view of a reconstructed double- $\beta$  data event. Tracks are reconstructed from a single vertex in the source foil, with an electronlike curvature in the magnetic field, and are each associated to an energy deposit in a calorimeter block.

associated with the scintillator block. Events with a  $\gamma$  candidate, defined by a scintillator hit that is not associated to a track, are rejected.

- (ii) The two electron tracks must originate from a common vertex in the  $^{100}\text{Mo}$  source foil. We therefore require that the transverse and longitudinal components of the distance between their intersection points with the foil are less than 4 and 8 cm, respectively.
- (iii) To reject background from  $^{214}\text{Bi}$  decays near the foil, the number of unassociated hits in the tracking detector close to the vertex should not exceed one. When the two tracks are on the same side of the foil, there must be no unassociated hit on the opposite side of the foil close to the vertex.
- (iv) The energy of each electron as measured in the calorimeter must be  $> 200$  keV.
- (v) The curvature of both tracks must be negative to reject positrons.
- (vi) The time of flight must correspond to the two electrons being emitted from the same vertex in the source foil, requiring  $P_{\text{int}} > 1\%$  and  $P_{\text{ext}} < 1\%$ . To ensure a reliable time-of-flight measurement, the track length of each track must exceed 50 cm. Events with hits in scintillator blocks from the innermost circle of petals are rejected.
- (vii) Events with delayed tracker hits close to the electron tracks are rejected to reduce  $^{214}\text{Bi}$  and radon background (see Sec. V B). The delay time of these hits is required to be greater than  $100 \mu\text{s}$  for events with only one delayed hit, and 40, 20, and  $4 \mu\text{s}$  for events with 2, 3, or  $> 3$  delayed hits, respectively. These criteria reduce the sensitivity to spurious hits in cells close to the electron track.
- (viii) Events are rejected if a scintillator hit is linked to a PMT that has been flagged by the laser survey as having unstable gain.

A typical double- $\beta$  event is shown in Fig. 8. Only events with an energy sum  $E_{\text{tot}} > 2$  MeV for the two electrons are considered in the  $0\nu\beta\beta$  search. The efficiencies to select  $0\nu\beta\beta$  events are calculated using the MC simulation, and are given in Table II after each successive application of the selection criteria. The  $0\nu\beta\beta$  signal selection efficiency is 11.3% for Phases I and II combined and  $E_{\text{tot}} > 2$  MeV. It reduces to 4.7% in the energy window  $E_{\text{tot}} = [2.8-3.2]$  MeV. This reduction is due to the fact that the  $E_{\text{tot}}$  energy spectrum of the  $\beta\beta0\nu$  signal peaks around 2.8 MeV, i.e. 200 keV below the theoretical  $Q_{\beta\beta}$

TABLE II. Evolution of the  $0\nu\beta\beta$  efficiency as a function of the successive criteria of selection for Phases I and II. “Ideal” refers to the detector without any noisy Geiger cell neither unstable or noisy PMTs.

Selection criteria	Ideal	Phase I	Phase II
Trigger	0.973	0.973	0.973
Two tracks reconstructed	0.480	0.478	0.462
Track-scintillator association	0.352	0.348	0.331
Associated PMTs not dead	0.352	0.321	0.288
No extra scintillator hit	0.313	0.287	0.258
Scintillator correctly calibrated	0.313	0.281	0.245
Common track vertex in foil	0.280	0.251	0.218
Tracks have hits near foil	0.273	0.244	0.211
No extra prompt hits near vertex	0.271	0.242	0.209
Track length $> 50$ cm	0.252	0.225	0.194
Scintillator energy $> 200$ keV	0.245	0.219	0.189
Negative track curvature	0.223	0.199	0.172
Isolated scintillator blocks	0.219	0.195	0.169
No scintillator at petals near foil	0.209	0.186	0.161
Timing requirement	0.206	0.184	0.159
Reject $\alpha$ particles	0.206	0.184	0.159
Energy laser survey	0.206	0.113	0.119
$E_{\text{tot}} > 2$ MeV	0.204	0.111	0.117
$E_{\text{tot}} > 2.8$ MeV	0.085	0.047	0.049

value, because of the energy losses of the electrons in the foil and in the wire chamber. If the inefficiency due to noisy Geiger cells and unstable or dead PMTs is removed, these efficiencies increase to 20.3% for  $E_{\text{tot}} > 2$  MeV, and 8.5% in the energy window  $E_{\text{tot}} = [2.8-3.2]$  MeV.

The uncertainty on the signal efficiency is determined using dedicated runs with two calibrated  $^{207}\text{Bi}$  sources, with a low activity of around 180 Bq, at four different locations inside the detector. The runs were taken in March 2004, June 2004 and April 2006. The two conversion electrons emitted simultaneously by the  $^{207}\text{Bi}$  sources are selected. The criteria to select the two-electron events are the same as the ones used to select the double- $\beta$  events, except that the energy of the electrons must correspond to the expected energy of the conversion electrons and the common vertex of the two

electron tracks must originate from the calibration sources. The reconstructed  $^{207}\text{Bi}$  activities are in agreement with the nominal values within 5%, which is consistent within the expected systematic uncertainty.

### V. BACKGROUND MEASUREMENTS

The NEMO-3 detector is unique in its ability to identify electrons, positrons,  $\gamma$  rays and delayed  $\alpha$  particles by combining information from the tracking detector, calorimeter, and the track curvature in the magnetic field. This allows the separation of different non-double- $\beta$  background processes by exploiting differences in their event topologies and final states. We distinguish three background components, as illustrated in Fig. 9, namely the

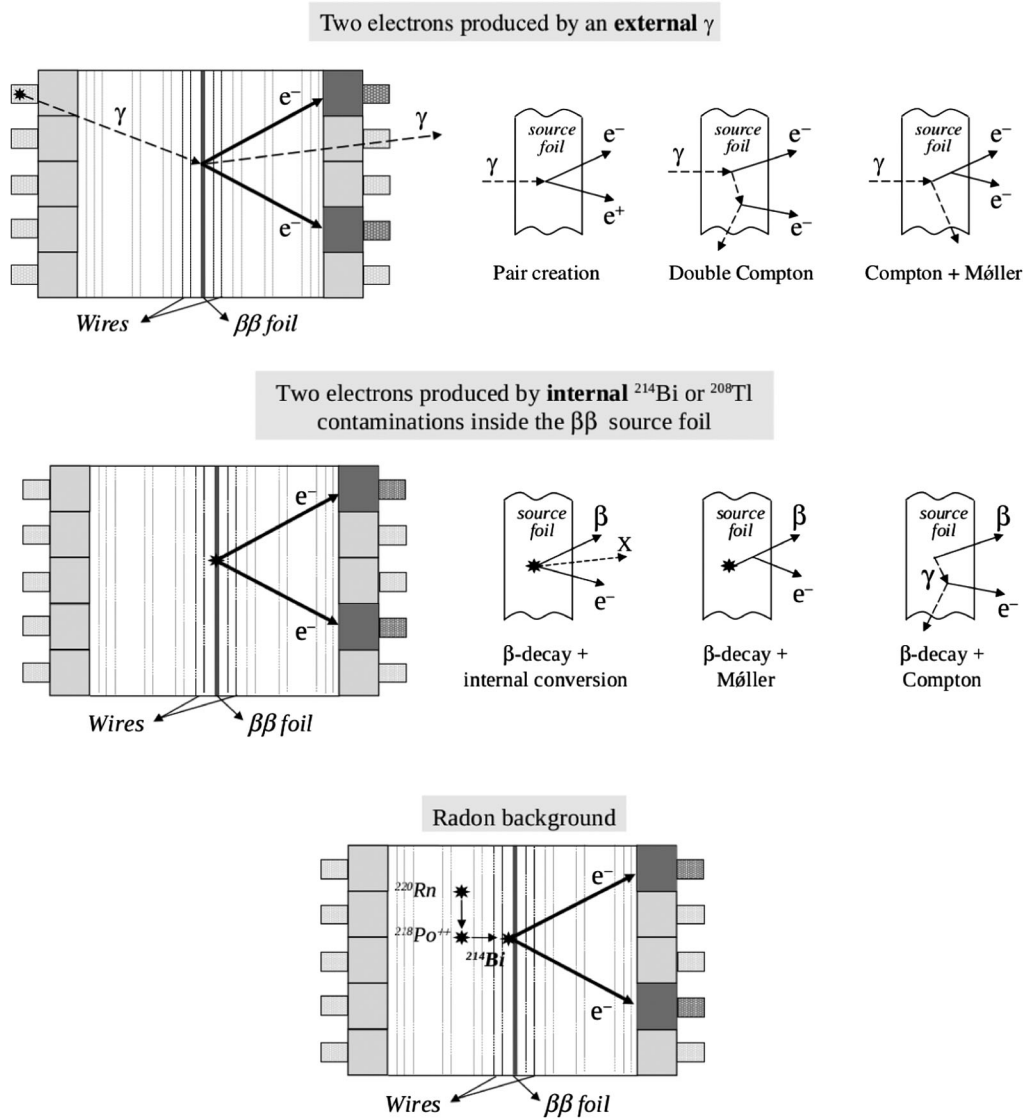


FIG. 9. Schematic view of the different components of the two-electron background: the external background produced by an external  $\gamma$  ray, the internal background produced by internal  $^{214}\text{Bi}$  and  $^{208}\text{Tl}$  contaminations in the  $^{100}\text{Mo}$  source foil, and the radon contamination inside the tracking detector.

external background, the internal background, and the background from radon. We first measure the external background. Then, the radon and thoron backgrounds inside the tracking detector are measured, setting the external backgrounds to their measured values. Finally, the internal  $^{208}\text{Tl}$  and  $^{214}\text{Bi}$  contaminations inside the  $\beta\beta$  source foils are determined, with all other backgrounds fixed. A full description of the background analysis and preliminary background measurements with part of the NEMO-3 data set are given in Ref. [10]. Here, we report the results of the background measurements using the full data set.

### A. External background

The external background is produced by the interaction of external  $\gamma$  rays originating from the natural radioactivity of the detector outside of the source, by external neutrons undergoing neutron capture that results in emission of  $\gamma$  rays, or by cosmic rays. If an external  $\gamma$  ray is not detected by a scintillator, it can reach the source foil without being tagged. It can then mimic a  $\beta\beta$  event by creating an  $e^+e^-$  pair, if the two photons from a subsequent positron annihilation remain undetected or the sign of the positron track curvature is incorrectly measured. Double or single Compton scattering followed by Møller scattering can also lead to a double- $\beta$ -like topology. The different mechanisms are illustrated in Fig. 9.

We measure the external background using both external ( $\gamma, e^-$ ) and crossing-electron events, as illustrated in Fig. 10. External ( $\gamma, e^-$ ) events are selected requiring one isolated scintillator hit, assumed to be from the  $\gamma$  ray, and one electron track coming from the source foil and associated with a different scintillator. The time difference between the scintillator hits must agree with the hypothesis that an external  $\gamma$  ray has hit the first scintillator block before producing a Compton electron in the foil.

Crossing electrons leave a track that traverses the detector and is associated with a scintillator hit on either side with a

time of flight and a curvature consistent with a crossing electron. In this topology, an external  $\gamma$  hits the first scintillator block from outside and then creates an electron by Compton scattering in the last few millimeters of the scintillator closest to the tracking detector. This Compton electron crosses the detector including the foil before hitting the second scintillator, depositing its entire energy.

The external background is modeled by fitting the data in both channels assuming contaminations of  $^{214}\text{Bi}$  from  $^{238}\text{U}$  and  $^{208}\text{Tl}$  from  $^{232}\text{Th}$  decays,  $^{40}\text{K}$  inside the PMTs, scintillators, iron shield and iron structure, cosmogenic  $^{60}\text{Co}$  inside the mechanical structure, and external  $\gamma$  rays from the laboratory environment.

The  $^{208}\text{Tl}$  and  $^{214}\text{Bi}$  contaminations inside the PMTs are the dominant components of the external background in the range  $E_{\text{tot}} > 2$  MeV. Their activities have been set to the values quoted in our previous background measurement with part of the NEMO-3 data set [10]. Activities of other components in the MC simulation are fitted to the data using a combined fit to the distributions of the electron energy  $E_{e^-}$ , the  $\gamma$  energy  $E_\gamma$ , the sum of the energy  $E_{e^-} + E_\gamma$ , and the angle between the reconstructed  $\gamma$  direction and electron track.

Figure 11 shows the energy spectra of the Compton electrons for external ( $\gamma, e^-$ ) events and the energy measured in the last scintillator block hit ( $E_e^{\text{out}}$ ) for crossing electrons. The fitted MC background model agrees with the data and lies within the 10% systematic uncertainty of the previous results obtained with a smaller data set [10]. It is also consistent with the radioactivity measurements of the detector materials using high-purity germanium (HPGe) detectors before installation [10].

The neutron contribution to the external background is measured with dedicated runs performed with an Am-Be neutron source located outside of the shield. The data provide the energy spectra of Compton electrons created by external neutrons in the ( $\gamma, e^-$ ) and crossing-electron channels. These spectra are then used in the fit of the external background model in Fig. 11. The contribution of

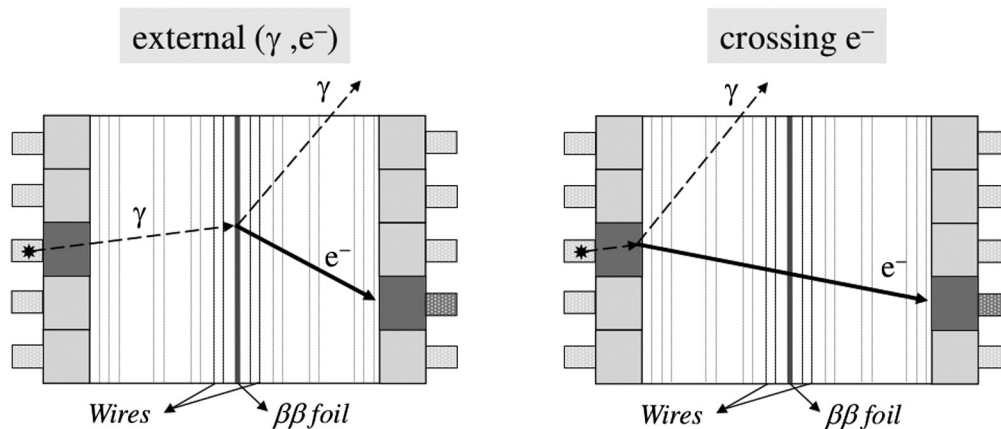


FIG. 10. The two event topologies used to measure the external background: external ( $\gamma, e^-$ ) events and crossing-electron events.



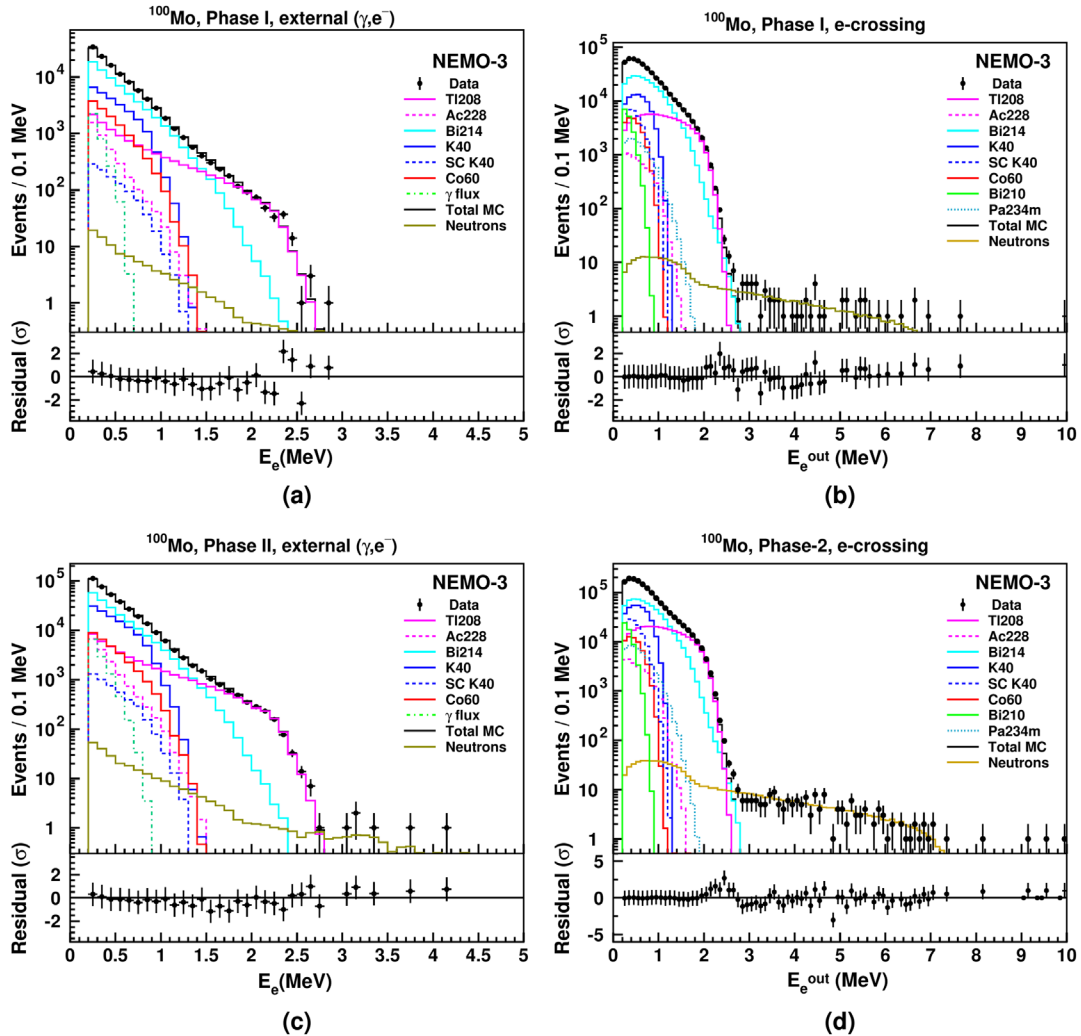


FIG. 11 (color online). Result of the fit of the external background to data for the total  $^{100}\text{Mo}$  exposure of  $34.3 \text{ kg} \cdot \text{yr}$ , for the electron energy  $E_e$  of external ( $\gamma, e^-$ ) events [(a) and (c)] and the energy  $E_e^{\text{out}}$  measured in the last scintillator block hit in crossing-electron events [(b) and (d)]. The distributions are shown separately for Phases I [(a) and (b)] and II [(c) and (d)]. SC K40 corresponds to  $^{40}\text{K}$  impurities inside the scintillators. The lower panels show residuals between data and expected background, normalized to the Poisson error, ignoring bins with 0 events.

neutrons to the external background is negligible for  $E_{\text{tot}} < 2.6 \text{ MeV}$ , which corresponds to the energy of the  $\gamma$  line of  $^{208}\text{Tl}$ , but neutrons dominate at higher energies. The good agreement between data and expected background from neutrons shows that the measurement performed with the Am-Be source correctly emulates the expected external background induced by neutrons for  $E_{\text{tot}} > 2.6 \text{ MeV}$ , and can be used to estimate the expected background in the  $0\nu\beta\beta$  energy range. Only six double- $\beta$ -like events with vertices in the  $^{100}\text{Mo}$  foils and  $2.8 < E_{\text{tot}} < 3.2 \text{ MeV}$  are observed in the Am-Be neutron data. With the normalization factor obtained from the fit of the external background in Fig. 11, we obtain a negligible expected background rate of  $0.03 \pm 0.01$  events for the combined Phase I and II data sets in the energy range  $2.8 < E_{\text{tot}} < 3.2 \text{ MeV}$  consistent with a  $0\nu\beta\beta$  signal. The expected

number of double- $\beta$ -like events for  $E_{\text{tot}} > 4 \text{ MeV}$  is  $0.14 \pm 0.03$  and is also negligible.

The neutron background model is further studied using events with  $e^+e^-$  pairs, where external neutrons are the only expected component of the background for  $E_{\text{tot}} > 4 \text{ MeV}$ . The criteria to select  $e^+e^-$  events are the same as the ones used to select two-electron events (see Sec. IV), except that the curvatures of the two tracks are required to be of opposite sign. For  $E_{\text{tot}} > 4 \text{ MeV}$ , we observe two  $e^+e^-$  events, in agreement with the expectation of  $1.1 \pm 0.1$  neutron events. The  $E_{\text{tot}}$  distribution for these events is shown in Fig. 12.

## B. Radon and thoron contaminations

Radon and thoron are both found inside the tracking detector. Radon ( $^{222}\text{Rn}$ ) with a half-life of  $T_{1/2} = 3.824$

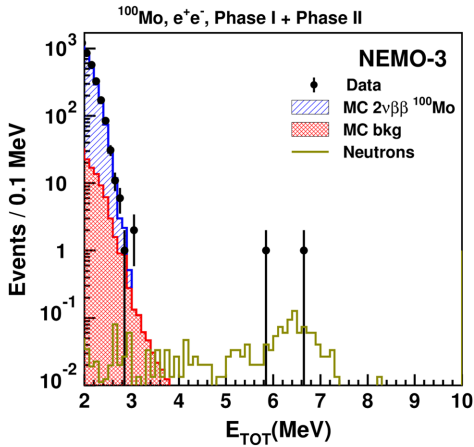


FIG. 12 (color online). Distribution of  $E_{\text{tot}}$  for  $e^+e^-$  pair events consistent with being emitted from  $^{100}\text{Mo}$  foils for the entire data set. The data are compared to the sum of the expected background from external neutrons,  $2\nu\beta\beta$  events, and the other background components.

days and thoron ( $^{220}\text{Rn}$ ) with  $T_{1/2} = 55.6$  s are  $\alpha$ -decay isotopes that have  $^{214}\text{Bi}$  and  $^{208}\text{Tl}$  as daughter isotopes in their respective decay chains. Radon and thoron emanate from the rock into the air, from where they diffuse into the detector and contaminate the interior of the tracking chamber. They can also emanate directly from the detector materials inside the tracking chamber. Subsequent  $\alpha$  decays of these rare gases produce  $^{214}\text{Pb}$  or  $^{212}\text{Pb}$  ions, which drift mainly to the cathode wires. If they are deposited on wires close to source foils, their decays can mimic a  $\beta\beta$  decay, as illustrated in Fig. 9. Contamination from thoron is much lower than from radon since the shorter half-life makes it less likely for thoron to emanate and diffuse into the detector.

The radon contamination is measured by detecting BiPo events, where the electron from  $\beta$  decay of  $^{214}\text{Bi}$ , a daughter of  $^{222}\text{Rn}$ , is followed by a delayed  $\alpha$  particle from the decay of  $^{214}\text{Po}$ , which has a short half-life of  $164 \mu\text{s}$ . Additional photons may also be emitted and detected. A BiPo event in the NEMO-3 detector is identified by requiring an electron track inside the wire chamber associated with a scintillator hit, and at least one delayed hit in the tracking chamber close to the emission point of the electron, due to the delayed  $\alpha$  particle. The delay time is required to be at least  $100 \mu\text{s}$  for events with only one delayed hit, and at least 40, 20, and  $4 \mu\text{s}$  for events with 2, 3 and  $> 3$  delayed hits, respectively, to reject hits where electrons have caused neighboring Geiger cells to re-fire. Applying these criteria, the mean efficiency to select a BiPo event produced on the surface of a wire is estimated by MC simulations to be 23%.

The time distribution of delayed tracks, shown in Fig. 13, is used to demonstrate the purity of the event selection. We fit the sum of an exponential function and a constant term accounting for random coincidences to the data distributions, assuming a  $^{214}\text{Po}$  half-life of  $T_{1/2} = 164 \mu\text{s}$ . For

Phase II the fits are applied to delay times larger than  $140 \mu\text{s}$  for events with only one delayed hit in the tracking detector, and 80 and  $60 \mu\text{s}$  for events with 2 or  $> 2$  delayed hits, respectively. Slightly lower minimum delay times are used for Phase I. The very small excess of events over the extrapolated curve at low delay time provides the fraction of re-firing Geiger cells, and the constant term provides the fraction of random coincidences. The contribution of random coincidences and Geiger re-firings, given in Table III, depend on the number of delayed hits and the data taking period. In all cases, they are found to be negligible.

This method allows a daily measurement of the radon activity inside the tracking detector. The average radon activity is about  $30 \text{ mBq/m}^3$  in Phase I and about  $5 \text{ mBq/m}^3$  in Phase II. Figure 14 shows the spatial distribution of vertices for BiPo events that either originate on the foils or on one of the first two layers of Geiger cells inside the tracking chamber. The activity is larger in sector 03, which hosts a  $^{100}\text{Mo}$  source, than in other sectors. The radon model used for the background simulation includes the contributions of  $^{214}\text{Bi}$  deposited on the surface of wires and on the surface of foils.

The systematic uncertainty on the  $^{214}\text{Bi}$  background contribution caused by radon contamination is dominated by the uncertainty on the efficiency of the tracking chamber to detect a delayed  $\alpha$  decay of  $^{214}\text{Bi}$ . It is estimated by independently measuring the activities of the isotope  $^{214}\text{Bi}$  using  $(e^-, \alpha)$  and  $(e^-, \gamma)$  events. A large fraction of the  $^{214}\text{Bi}$   $\beta$  decays is accompanied by a high energy  $\gamma$  ray emitted from the same point inside the tracking chamber. These  $(e^-, \gamma)$  events are contaminated both by external  $\gamma$  rays that Compton scatter on the wires of the Geiger cells, and by  $(\beta, \gamma)$  emitters in the wires. To suppress this background, only events with a  $\gamma$  energy  $> 1$  MeV are selected.

The  $^{214}\text{Bi}$  measurement using  $(e^-, \gamma)$  events suffers from larger background and has an approximately 3 times smaller detection efficiency compared to the method using delayed tracks. It is sensitive to the systematic uncertainties on  $\gamma$  detection, but it is not affected by systematic uncertainties on the  $\alpha$  detection efficiency. The  $^{214}\text{Bi}$  and radon measurement using  $(e^-, \gamma)$  events agree within 10% with the result using an electron and a delayed  $\alpha$  track [10].

The  $^{208}\text{Tl}$  activity from thoron inside the tracking chamber is measured using  $(e^-, \gamma\gamma)$  and  $(e^-, \gamma\gamma\gamma)$  events (see the next section). The  $^{208}\text{Tl}$  activity is about  $0.1 \text{ mBq/m}^3$ , both in Phase I and in Phase II. Taking into account the branching ratio of 36% for producing  $^{208}\text{Tl}$  in the  $^{232}\text{Th}$  decay chain yields a thoron activity of about  $0.3 \text{ mBq/m}^3$ . The MC simulations predict that this thoron activity leads to a background for two-electron events with  $E_{\text{tot}} > 2$  MeV that is a factor of 50 smaller than the background originating from radon for Phase I, and a factor of 8 for Phase II. The  $^{208}\text{Tl}$  contribution is therefore negligible in the  $0\nu\beta\beta$  energy region, and for decays with  $E_{\text{tot}} > 2.8$  MeV.

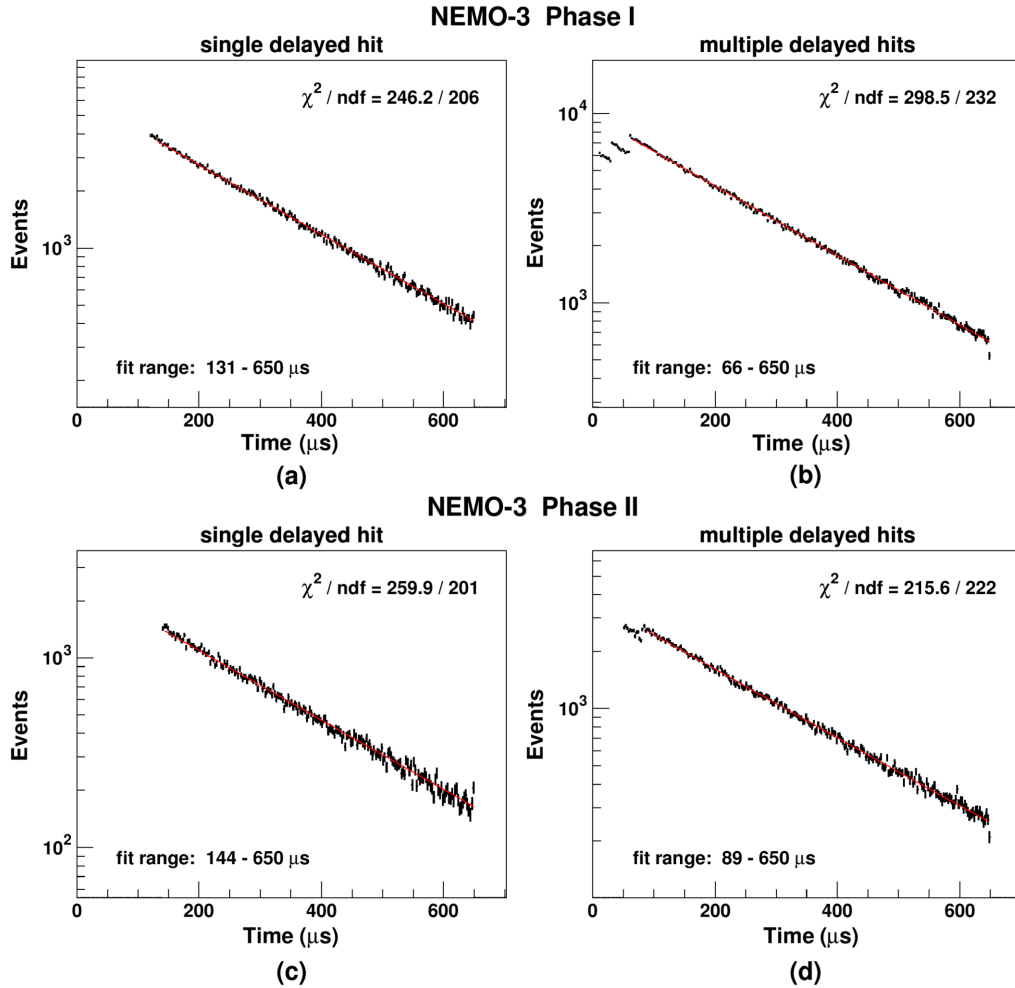


FIG. 13 (color online). Time distribution of delayed  $\alpha$  tracks, measured for BiPo decays emitted inside the tracking detector, for Phase I [(a) and (b)] and Phase II [(c) and (d)], and for single delayed Geiger hit [(a) and (c)] or multiple delayed Geiger hits [(b) and (d)]. The distributions are fitted by the sum of an exponential function with  $T_{1/2}$  set to the  $^{214}\text{Po}$  half-life of  $T_{1/2} = 164 \mu\text{s}$  and a constant term accounting for random coincidences.

### C. Internal backgrounds

Internal backgrounds originating from radioactive contaminants inside the source foils are mainly due to  $\beta$  decay of  $^{214}\text{Bi}$  with  $Q_\beta = 3.27 \text{ MeV}$  and  $^{208}\text{Tl}$  with  $Q_\beta = 4.99 \text{ MeV}$ . The two isotopes are products of the

TABLE III. Contribution of random coincidences and Geiger refirings in the selection of BiPo events used for the radon measurement, for the high radon period (Phase I) and the low radon period (Phase II), requiring either exactly one or several delayed Geiger hits. Upper limits are given at 90% C.L.

Number of delayed hits	1	> 1
	Phase I	
Random coincidences	< 0.03%	< 2.7%
Refiring	< 0.5%	< 2.6%
	Phase II	
Random coincidences	< 0.05%	$(1.1 \pm 0.3)\%$
Refiring	< 0.7%	< 0.7%

$^{238}\text{U}$  and  $^{232}\text{Th}$  decay chains, respectively. As illustrated in Fig. 9, the presence of  $^{214}\text{Bi}$  and  $^{208}\text{Tl}$  can mimic  $\beta\beta$  events by a  $\beta$  decay accompanied by an internal conversion electron process. This is the dominant channel in the case of  $^{208}\text{Tl}$  with a conversion rate of 0.2% for the 2615 keV  $\gamma$  ray, which produces a conversion electron with an energy of 2527 keV. Other processes are Møller scattering of the  $\beta$ -decay electrons in the source foil, or  $\beta$  decay to an excited state followed by a  $\gamma$  undergoing Compton scattering, which can be reconstructed as two-electron events if the  $\gamma$  is not detected.

#### 1. $^{208}\text{Tl}$ contamination in the source foils

The  $\beta$  decay of  $^{208}\text{Tl}$  is usually accompanied by two or three  $\gamma$  rays. The  $^{208}\text{Tl}$  contamination inside the source foils is therefore measured by selecting internal ( $e^-, \gamma\gamma$ ) and ( $e^-, \gamma\gamma\gamma$ ) events defined as one electron track originating from the source foil that is associated with a scintillator hit, and two or three isolated scintillator hits. The time of flight

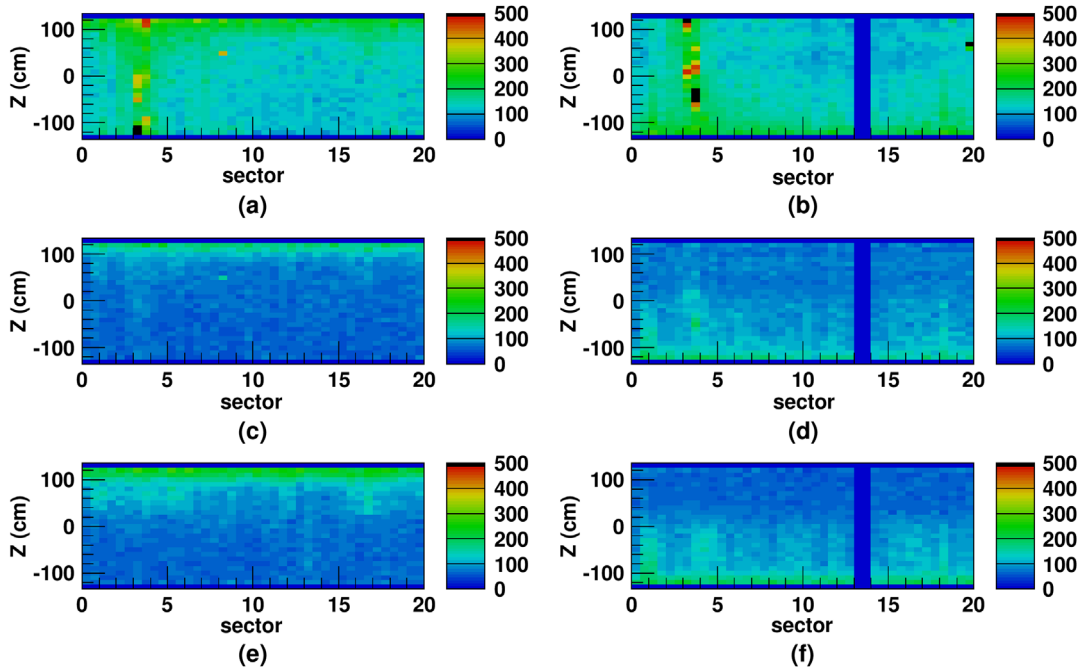


FIG. 14 (color online). The spatial distribution (vertical coordinate  $z$  versus sector number) of the emission vertex of detected  $^{214}\text{Bi}$ - $^{214}\text{Po}$  decay cascade events emitted inside the tracking detector close to the source foils for Phase II. The left (right) corresponds to events with an emission vertex on the internal (external) side of the source foil. (a) and (b) correspond to a vertex on the foil or on the wires of the first layer of Geiger cells close to the foil, (c) and (d) correspond to a vertex on the wires of the second layer of Geiger cells, and (e) and (f) correspond to a vertex on the wires of the third layer of Geiger cells. The external side of sector 13 is not represented because of noise observed for Geiger cells in this zone.

must be consistent with the hypothesis that all particles are emitted from the track intersection with the foil.

We require that the energy of the electron is in the range  $0.2 < E_{e^-} < 1.5$  MeV,  $E_\gamma > 0.2$  MeV for all  $\gamma$  energies, and that the sum  $\sum E_\gamma < 3.5$  MeV. The condition

$$E_{e^-}(\text{MeV}) > \left( 4(\text{MeV}) - 1.5 \times \sum E_\gamma(\text{MeV}) \right) \quad (8)$$

rejects the  $^{214}\text{Bi}$  background. The highest energy photon must have  $E_\gamma > 1.7$  MeV to select the 2615 keV  $\gamma$  line. Finally, we require  $P_{\text{int}} > 0.05$ ,  $P_{\text{ext}} < 0.01$ , and the  $z$  coordinate of the emission vertex of the electron must satisfy  $|z| < 120$  cm. The distributions of  $E_{e^-}$ ,  $\sum E_\gamma$ , and the total energy  $E_{e^-} + \sum E_\gamma$  are shown in Fig. 15. The thoron and radon activities inside the tracking chamber are set to the values obtained from the prior measurements described in Sec. VB.

The measured  $^{208}\text{Tl}$  activities of the metallic and composite Mo source foils, and of the copper and tellurium foils are given in Table IV, for both event topologies combined. The data are in agreement with the upper limits from the HPGe measurements of  $^{208}\text{Tl}$  activities, prior to the installation of the foils in the detector. The two event topologies,  $(e^-, \gamma\gamma)$  and  $(e^-, \gamma\gamma\gamma)$ , give consistent results when analyzed separately. The  $^{208}\text{Tl}$  activities of the copper and tellurium foils are used in Sec. VD for the validation of the background model.

The systematic uncertainty on the  $^{208}\text{Tl}$  activity is determined by using two  $^{232}\text{U}$  radioactive sources (the isotope  $^{232}\text{U}$  is a parent of  $^{208}\text{Tl}$ ). The  $^{208}\text{Tl}$  activities of the sources are first calibrated by gamma spectroscopy with a coaxial HPGe detector, by measuring the intensity of the  $\gamma$  line emitted in the decay of  $^{212}\text{Pb}$  to  $^{212}\text{Bi}$  with an energy of 238 keV, while the two  $\gamma$  lines emitted in the decay of  $^{208}\text{Tl}$  with energies of 583 and 2615 keV are used to check the results. The HPGe detection efficiency is determined with a calibrated  $^{232}\text{Th}$  source that has an activity known to within 0.5%, and using a MC simulation of the setup. The sources are measured at four different distances between the source and the Ge crystal. The four activities obtained for each distance are combined to obtain total statistical uncertainties of 0.7% and a systematic uncertainty of 3%. The two calibrated  $^{232}\text{U}$  sources are then temporarily introduced into the NEMO-3 detector through the calibration tubes. We select  $(e^-, \gamma\gamma)$  and  $(e^-, \gamma\gamma\gamma)$  events and fit the activities of the two sources using a MC simulation of  $^{232}\text{U}$  decays. The results are given in Table V. The largest sources of systematic uncertainty are the knowledge of the exact location of the sources (3%) and the kinematic selection criteria (6%). This systematic uncertainty is estimated by allowing a variation of the energy requirements, considering tracks that traverse only a single sector, tracks only on the inner or outer side of the foils, and by accepting or rejecting scintillator blocks with an energy  $< 150$  keV.



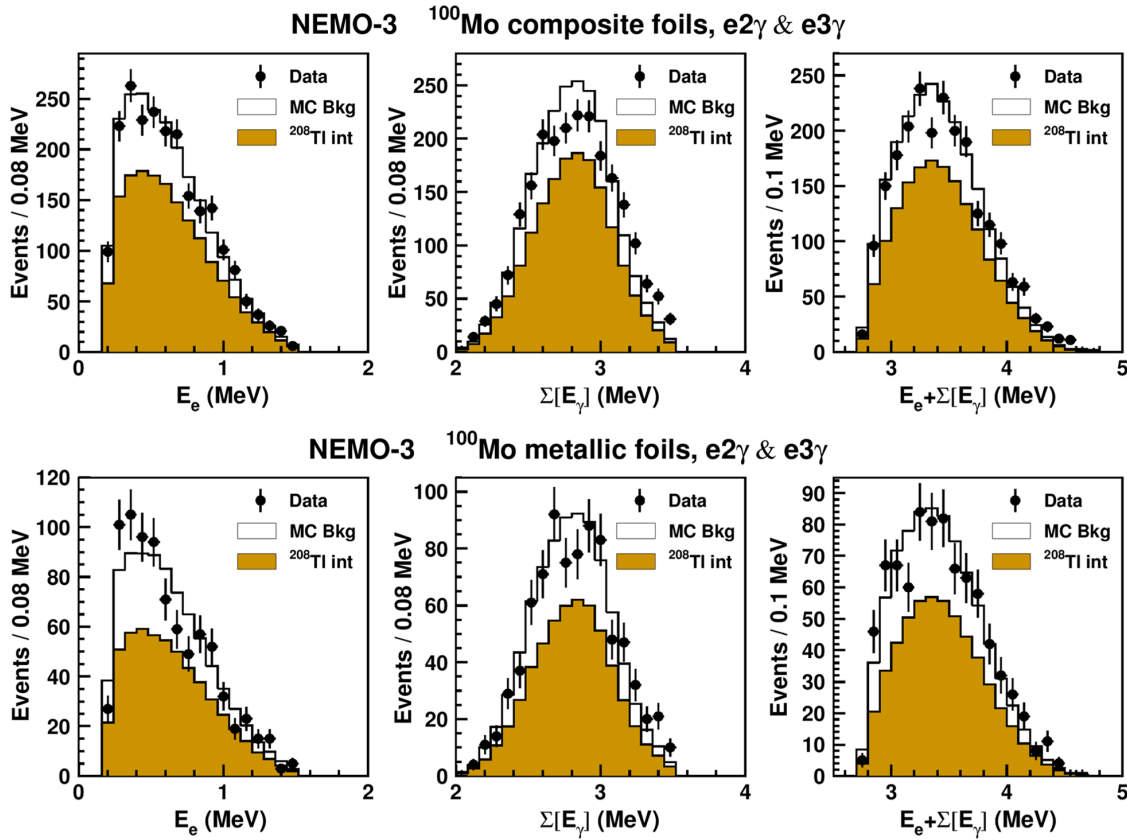


FIG. 15 (color online). Distributions of the energy of the electron,  $E_e$ , the energy sum  $\sum E_\gamma$ , and  $E_e + \sum E_\gamma$  using  $(e^-, \gamma\gamma)$  and  $(e^-, \gamma\gamma\gamma)$  events for the combined  $^{100}\text{Mo}$  data set. The top panels show the composite and the bottom panels the metallic foils. The data are compared to the sum of the expected background from MC simulations and the fitted  $^{208}\text{Tl}$  activity inside the  $^{100}\text{Mo}$  foils.

The results of the *in situ* NEMO-3 and the HPGe measurements shown in Table V are consistent within their systematic uncertainties. We assign a systematic uncertainty of 10% to the  $^{208}\text{Tl}$  activity measurement, corresponding to the larger difference between the *in situ* and the HPGe measurements obtained for the second  $^{232}\text{U}$  source.

TABLE IV. Numbers of observed  $(e^-, \gamma\gamma)$  and  $(e^-, \gamma\gamma\gamma)$  events ( $N_{\text{obs}}$ ), expected number of background events ( $N_B$ ), signal-to-background ratio,  $^{208}\text{Tl}$  signal efficiency ( $\epsilon$ ), and measured  $^{208}\text{Tl}$  activity of the  $^{100}\text{Mo}$  metallic and composite foils, the copper,  $^{130}\text{Te}$  and natural Te foils. The activities of the foils are compared to the HPGe measurements performed before their installation. Only statistical uncertainties are given.

Source foil	$N_{\text{obs}}$	$N_B$	$S/B$	$\epsilon$ (%)	$A$ ( $\mu\text{Bq}/\text{kg}$ )	$A$ (HPGe) ( $\mu\text{Bq}/\text{kg}$ ) (90% C.L.)
$^{100}\text{Mo}$ metallic	823	281	1.93	2.05	$87 \pm 4$	<100
$^{100}\text{Mo}$ composite	2241	617	2.63	2.15	$128 \pm 3$	<170
Copper	75	60	0.25	1.82	$11 \pm 3$	<33
$^{130}\text{Te}$	563	155	2.64	2.54	$206 \pm 10$	<500
Te-nat	741	121	5.14	2.18	$301 \pm 12$	<830

The  $^{208}\text{Tl}$  background measurement is validated by using the two-electron channel with at least one associated  $\gamma$  ray emitted in time from the source foil ( $e^-e^-, N\gamma$ ). In the region where the sum of the two electrons energies satisfies  $E_{\text{tot}} > 2.6$  MeV,  $^{208}\text{Tl}$  contamination inside the foil dominates, whereas  $2\nu\beta\beta$  decays are strongly suppressed by the selection criteria. Figure 16 shows the total energy of two electrons  $E_{\text{tot}}$  for  $(e^-e^-, N\gamma)$  events for the entire  $^{100}\text{Mo}$  data set. The normalizations of the different background components are set to the previously measured values and are not fitted to this distribution. The data are in good agreement with the expected background, which is dominated by  $^{208}\text{Tl}$  contamination inside the foils. We observe seven events in the  $^{100}\text{Mo}$  foils in the interval [2.8–3.2] MeV whereas 8.8 events are expected from the simulation. This independent check validates the estimation

TABLE V. The  $^{208}\text{Tl}$  activities from  $^{232}\text{U}$  sources obtained with the NEMO-3 detector and with HPGe  $\gamma$  spectrometers.

	$^{232}\text{U}$ Activity (Bq)	
	Source (1)	Source (2)
NEMO-3	$7.36 \pm 0.03 \pm 0.52$	$14.56 \pm 0.05 \pm 1.02$
HPGe	$7.79 \pm 0.04 \pm 0.21$	$15.91 \pm 0.09 \pm 0.43$

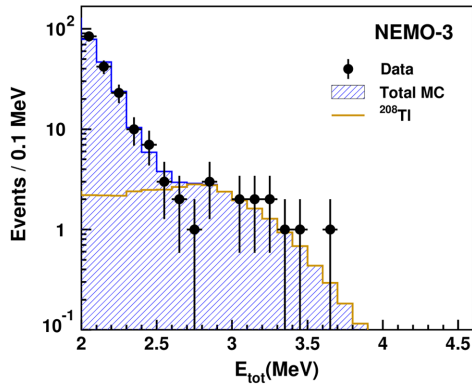


FIG. 16 (color online). Distribution of the total energy of two electrons  $E_{\text{tot}}$  in the  $(e^-e^-, N\gamma)$  channel for the  $^{100}\text{Mo}$  data set compared to the expected background from  $^{208}\text{Tl}$  contamination inside the foils and to the total expected background. The normalizations of the different background components are not fitted, but set to the measured values. No event is observed for  $E_{\text{tot}} > 3.7$  MeV.

of the  $^{208}\text{Tl}$  activity inside the foils within relatively large statistical uncertainties.

## 2. $^{214}\text{Bi}$ contamination in the source foil

The  $^{214}\text{Bi}$  contamination inside the source foils is measured by analyzing the distribution of the length of the delayed  $\alpha$  tracks in BiPo events. It allows the

discrimination of the  $^{214}\text{Bi}$  contamination inside the foils, and inside the Mylar for composite foils, from the dominant radon background close to or on the surface of a foil.

The criteria for the selection of the BiPo events are similar to the selection used for the radon activity measurement, except that the common vertex of the electron track and the delayed  $\alpha$  track must be in the foil or in the first layer of wires of the tracking chamber. The  $^{214}\text{Bi}$  contamination inside the source foils is found by fitting the distribution of the delayed  $\alpha$  track length, taking into account the other unknown activities as free parameters in the fit. These parameters are the  $^{214}\text{Bi}$  activities from radon deposition on the surface of the source foils and on the surface of the two closest layers of wires. Only Phase II data are used to reduce the radon background.

The results of the fit are shown in Figs. 17 and 18 for the  $^{100}\text{Mo}$  composite and metallic foils, respectively. The results of the  $^{214}\text{Bi}$  activity measurement are given in Table VI for  $^{100}\text{Mo}$  foils, and also for copper,  $^{130}\text{Te}$ , and natural tellurium foils. They are in agreement with the upper limits obtained from HPGe measurements.

The measured  $^{214}\text{Bi}$  contamination is checked by selecting two-electron events emitted from the  $^{100}\text{Mo}$  foils, where an associated delayed  $\alpha$  track is emitted from the two-electron vertex  $(e^-e^-, \alpha)$ . This channel is dominated by the radon background close to the foil and by  $^{214}\text{Bi}$  contamination from inside the foil. The criteria to select the two electrons are the same as those used for the selection of

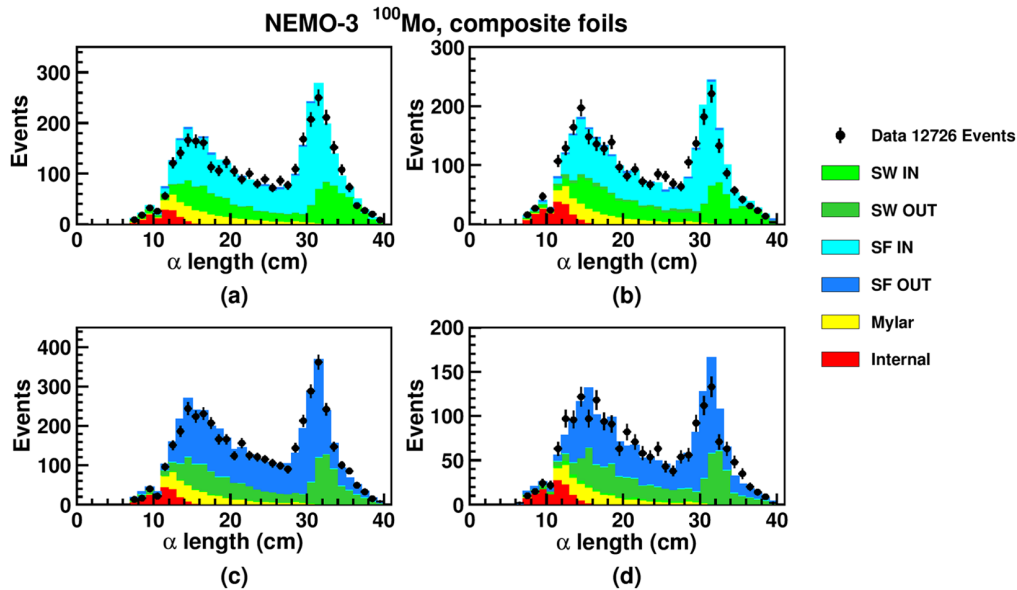


FIG. 17 (color online). Distribution of the lengths of delayed  $\alpha$  tracks for composite  $^{100}\text{Mo}$  foils for Phase II: (a) and (c) for electron and  $\alpha$  tracks on the same side of the foils, (b) and (d) for electron and  $\alpha$  tracks on opposite sides of the foils, (a) and (b) for  $\alpha$  tracks on the inner side of the foils, (c) and (d) for  $\alpha$  tracks on the outer side of the foils. The data are compared to the simulated background with a normalization determined by the fit of the different components of  $^{214}\text{Bi}$  background. “SW” corresponds to the  $^{214}\text{Bi}$  deposition on the surface of the wires, and “SF” to the deposition on the surface on the foil, where “IN” and “OUT” correspond to the components from the wires and surfaces inside and outside relative to the position of the foil. “Internal”  $^{214}\text{Bi}$  contamination originates inside the  $^{100}\text{Mo}$  foils, and the “Mylar” contamination from inside the Mylar.

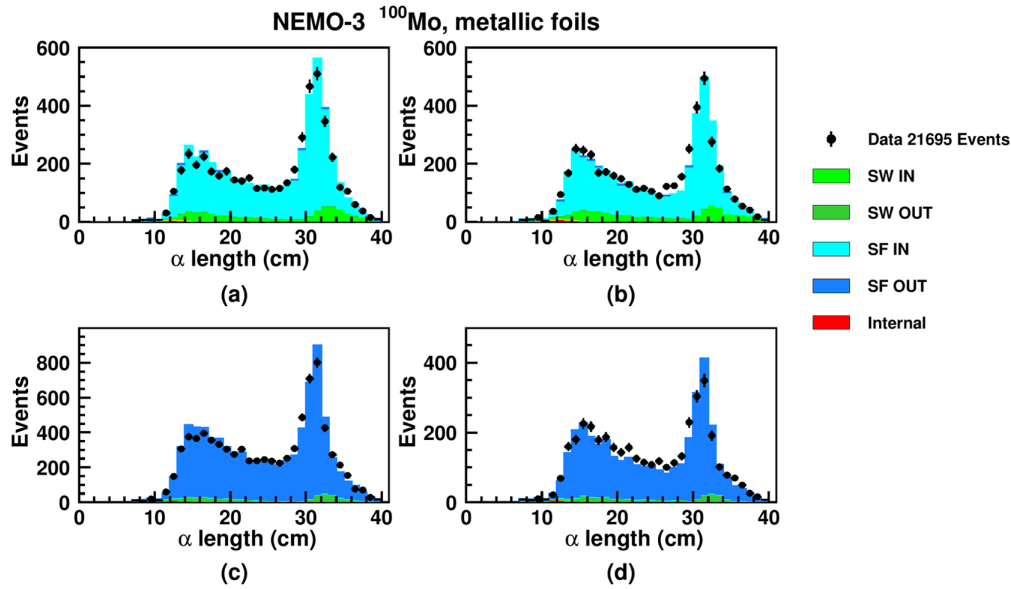


FIG. 18 (color online). Distribution of the delayed  $\alpha$  track length for metallic  $^{100}\text{Mo}$  foils (see the Fig. 17 caption for further details).

double- $\beta$  decay events (see Sec. IV). The criteria to select the delayed  $\alpha$  track are identical to those used for the radon background measurement. Using all  $^{100}\text{Mo}$  foils, we observe six events with a  $(e^-e^-, \alpha)$  topology in the energy range for the two electrons of  $E_{\text{tot}} = [2.8\text{--}3.2]$  MeV in the combined Phase I and II data, while  $9.4 \pm 0.4$  events are expected from simulations. Within large statistical uncertainties, this result confirms the prediction for the  $^{214}\text{Bi}$  background contribution in the  $0\nu\beta\beta$  signal region.

#### D. Validation of background model with copper and tellurium foils

The complete background model is validated by selecting two-electron events emitted from the copper, natural tellurium, and  $^{130}\text{Te}$  foils ( $Q_{\beta\beta} = 2527.518 \pm 013$  keV)

TABLE VI. Measured  $^{214}\text{Bi}$  activity of the  $^{100}\text{Mo}$  metallic,  $^{100}\text{Mo}$  composite, copper,  $^{130}\text{Te}$ , and natural Te source foils, compared to the HPGe measurements performed before their installation. Only statistical uncertainties are given. The fraction of the Mylar mass relative to the total mass of the foil is in the range 5%–10%, depending on the foil.

Source foil	Activity foil (mBq/kg)	Activity Mylar (mBq/kg)	A (HPGe) foil + Mylar (mBq/kg)	A (HPGe) Mylar (mBq/kg)
$^{100}\text{Mo}$ composite	$0.31 \pm 0.04$	$1.05 \pm 0.06$	$<0.34$	$<0.67$
$^{100}\text{Mo}$ metallic	$0.06 \pm 0.02$	No Mylar	$<0.39$	No Mylar
Copper	$0.16 \pm 0.04$	No Mylar	$<0.12$	No Mylar
$^{130}\text{Te}$	$0.41 \pm 0.06$	$1.81 \pm 0.17$	$<0.67$	$3.3 \pm 0.5$
Te-natural	$0.37 \pm 0.05$	$1.11 \pm 0.17$	$<0.17$	$1.7 \pm 0.5$

using the criteria described in Sec. IV. The data correspond to an exposure of  $13.5$  kg  $\cdot$  yr. The internal contaminations of these foils in  $^{208}\text{Tl}$  and  $^{214}\text{Bi}$  are measured using the same methods as those used for the Mo foils (see Secs. VC 1 and VC 2). Results of the internal contaminations measurements are given in Tables IV and VI. Figure 19 shows the distributions of the sum of the energies of the two electrons for  $E_{\text{tot}} > 2$  MeV, and Table VII gives the number of events with  $E_{\text{tot}} > 2$  MeV. The observed numbers of two-electron events agree with the expectation from the MC simulation calculated using the background model, which is dominated by the radon background. The number of  $2\nu\beta\beta$  decays of  $^{130}\text{Te}$  in this energy region is expected to be negligible [11]. In the full data set, only three events with two electrons from the sectors containing copper,  $^{130}\text{Te}$ , and natural tellurium foils remain in the energy region  $E_{\text{tot}} = [2.8\text{--}3.2]$  MeV, compared to a MC expectation of  $3.6 \pm 0.2$  events.

## VI. SEARCH FOR NEUTRINOLESS DOUBLE- $\beta$ DECAY

The search for  $0\nu\beta\beta$  decays is performed by first selecting two-electron events using the criteria described in Sec. IV, where we require two electrons emitted from a common vertex in one of the  $^{100}\text{Mo}$  foils with a combined energy  $E_{\text{tot}} > 2$  MeV. We then search for an excess in data above the background expectation in the  $E_{\text{tot}}$  distribution for energies close to the value of  $Q_{\beta\beta}$ . The contributions of the background from external sources, from radon, and from the internal  $^{214}\text{Bi}$  and  $^{208}\text{Tl}$  foil contaminations are fixed to the measured values given in Sec. V.

We obtain the  $2\nu\beta\beta$  background contribution by fitting the  $E_{\text{tot}}$  distribution in the range  $E_{\text{tot}} > 2$  MeV using the

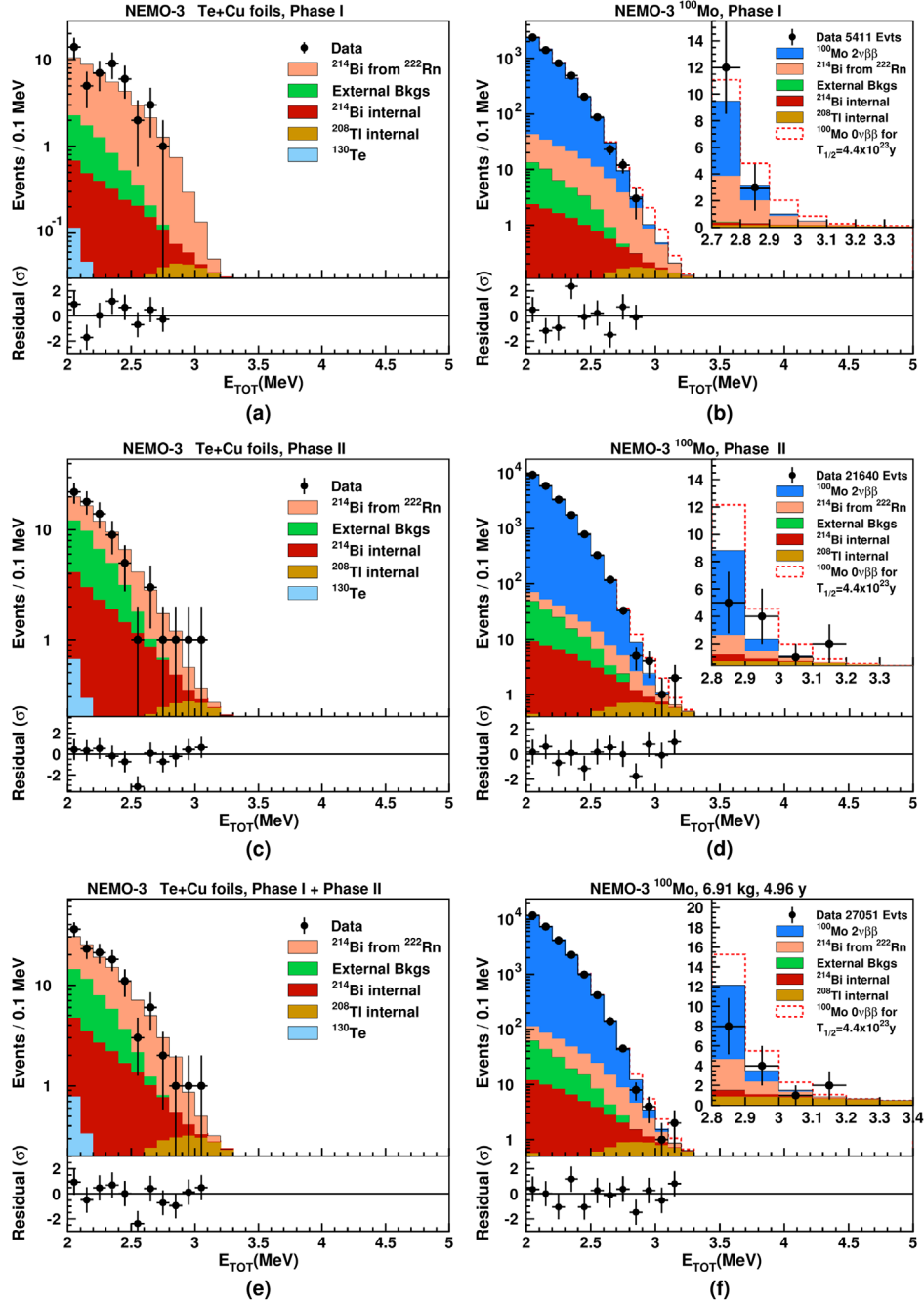


FIG. 19 (color online). Distribution of  $E_{\text{tot}}$  for two-electron events with  $E_{\text{tot}} > 2$  MeV for the copper,  $^{130}\text{Te}$ , and natural tellurium foils [(a), (c), and (e)], and for  $^{100}\text{Mo}$  foils [(b), (d), and (f)], for Phase I [(a) and (b)] and Phase II [(c) and (d)], and combined [(e) and (f)]. The combined data correspond to an exposure of  $13.5 \text{ kg} \cdot \text{yr}$  for the copper,  $^{130}\text{Te}$ , and natural tellurium foils, and  $34.3 \text{ kg} \cdot \text{yr}$  for the  $^{100}\text{Mo}$  foils. The data are compared to the sum of the expected background from  $2\nu\beta\beta$  decays of  $^{100}\text{Mo}$ , radon, external backgrounds, and from internal  $^{214}\text{Bi}$  and  $^{208}\text{Tl}$  contaminations inside the foils. Only the  $2\nu\beta\beta$  background contribution is fitted to the data, while the other background components are set to the measured values given in Sec. V. The lower panels show residuals between the data and expected background, normalized to the Poisson error, ignoring bins with 0 events.

shape of the spectrum predicted by the single state dominance model for the  $2\nu\beta\beta$  decay of  $^{100}\text{Mo}$  [12]. The other background components are also taken into account in the fit. Figure 19 shows that the fitted  $E_{\text{tot}}$  distributions for Phase I, Phase II, and for the combined

data set agree with the data. The fitted number of  $2\nu\beta\beta$  events for  $E_{\text{tot}} > 2$  MeV corresponds to a  $^{100}\text{Mo}$  half-life of

$$T_{1/2}(2\nu\beta\beta) = [6.93 \pm 0.04(\text{stat})] \times 10^{18} \text{ yr}, \quad (9)$$



TABLE VII. Numbers of expected background and observed two-electron events with  $E_{\text{tot}} > 2.0$  MeV in Phases I and II, and for the combined data set, in the copper, natural tellurium, and  $^{130}\text{Te}$  foils. The combined data correspond to an exposure of  $13.5 \text{ kg} \cdot \text{yr}$ . The contribution from  $2\nu\beta\beta$  decays of  $^{130}\text{Te}$  is negligible.

Data set	Phase I	Phase II	Combined
External background	$4.77 \pm 0.48$	$24.94 \pm 2.49$	$29.71 \pm 2.97$
$^{214}\text{Bi}$ from radon	$36.1 \pm 3.6$	$34.0 \pm 3.4$	$70.0 \pm 7.0$
$^{214}\text{Bi}$ internal	$2.34 \pm 0.23$	$13.83 \pm 1.38$	$16.17 \pm 1.62$
$^{208}\text{Tl}$ internal	$0.49 \pm 0.05$	$2.93 \pm 0.29$	$3.42 \pm 0.34$
$^{130}\text{Te}$	$0.12 \pm 0.02$	$0.75 \pm 0.15$	$0.87 \pm 0.17$
Total expected	$43.8 \pm 3.7$	$76.4 \pm 4.5$	$120.2 \pm 8.1$
Data	47	76	123

after correcting for the signal efficiency, which is in agreement with the previously published result for Phase I [6] and with the world average [13].

The  $E_{\text{tot}}$  distribution in the region  $2.8 \leq E_{\text{tot}} \leq 3.2$  MeV is shown in Fig. 19, and the different components of background in this energy window, and the number of observed two-electron events are given in Table VIII. In Phase II, the observed background rate for  $2.8 \leq E_{\text{tot}} \leq 3.2$  MeV is  $0.44 \pm 0.13$  counts/yr/kg, with about 55% originating from  $2\nu\beta\beta$  decays of  $^{100}\text{Mo}$ , about 20% from the radon gas contamination inside the tracking chamber, and about 20% from internal  $^{208}\text{Tl}$  contamination in the  $^{100}\text{Mo}$  foils. We estimate the internal  $^{214}\text{Bi}$  contamination in the composite  $^{100}\text{Mo}$  foils to be 5%, while this background is negligible for metallic foils. The contributions from external backgrounds are also negligible.

Since we observe no significant excess in data above the background expectation, a limit on the  $0\nu\beta\beta$  decay of  $^{100}\text{Mo}$  is derived. The uncertainties on the efficiency to detect  $0\nu\beta\beta$  events and on the estimated background contributions are the two main components of the systematic uncertainty. As discussed in Sec. IV, the systematic uncertainty on the  $0\nu\beta\beta$  detection efficiency is 5%. The systematic uncertainties on the estimated background

TABLE VIII. Numbers of expected background and observed two-electron events in Phases I and II in the  $^{100}\text{Mo}$  foil for an exposure of  $34.3 \text{ kg} \cdot \text{yr}$  in the range  $E_{\text{tot}} = [2.8-3.2]$  MeV. The  $0\nu\beta\beta$  signal detection efficiency is 4.7% in this energy range.

Data set	Phase I	Phase II	Combined
External background	<0.04	<0.16	<0.2
$^{214}\text{Bi}$ from radon	$2.8 \pm 0.3$	$2.5 \pm 0.2$	$5.2 \pm 0.5$
$^{214}\text{Bi}$ internal	$0.20 \pm 0.02$	$0.80 \pm 0.08$	$1.0 \pm 0.1$
$^{208}\text{Tl}$ internal	$0.65 \pm 0.05$	$2.7 \pm 0.2$	$3.3 \pm 0.3$
$2\nu\beta\beta$ decays	$1.28 \pm 0.02$	$7.16 \pm 0.05$	$8.45 \pm 0.05$
Total expected	$4.9 \pm 0.3$	$13.1 \pm 0.3$	$18.0 \pm 0.6$
Data	3	12	15

contributions are due to the activities of  $2\nu\beta\beta$  decays, and the  $^{214}\text{Bi}$  and  $^{208}\text{Tl}$  backgrounds. An uncertainty of 0.7% on the  $2\nu\beta\beta$  activity is obtained from the fit to two-electron events in the energy range  $E_{\text{tot}} > 2$  MeV. As discussed in Sec. V, the systematic uncertainty on the normalizations of the background contributions from radon,  $^{214}\text{Bi}$ , and  $^{208}\text{Tl}$  radioactive contaminants is 10%. This systematic uncertainty is taken into account in setting the limit on the  $0\nu\beta\beta$  decay of the  $^{100}\text{Mo}$  isotope. The contributions of the external backgrounds and from thoron are negligible.

The limit on the  $0\nu\beta\beta$  half-life is set using a modified frequentist analysis that employs a log-likelihood ratio test statistics [14]. The method uses the full information of the binned energy sum distribution in the  $E_{\text{tot}} = [2.0-3.2]$  MeV energy range for signal and background (see Fig. 19), as well as the statistical and systematic uncertainties and their correlations, and is described in more detail in [14,15]. All limits are given at the 90% C.L. The data are described well by the background-only hypothesis with a  $p$  value of  $p = 1 - CL_b = 0.647$ . Taking into account the  $0\nu\beta\beta$  detection efficiency of 11.3% for the combined data set and the total exposure of  $34.3 \text{ kg} \cdot \text{yr}$ , we obtain a limit of  $T_{1/2}(0\nu\beta\beta) > 1.1 \times 10^{24}$  yr for the  $0\nu\beta\beta$  decays of  $^{100}\text{Mo}$  with decay kinematics similar to that for the light Majorana neutrino exchange.

The result agrees with the median expected sensitivity of the experiment of  $T_{1/2}(0\nu\beta\beta) = 1.0 \times 10^{24}$  yr within the  $\pm 1$  standard deviation (SD) range of  $[0.7, 1.4] \times 10^{24}$  yr. This result is a factor of 2 more stringent than the previous best limit for this isotope [6]. The corresponding upper limit on the effective Majorana neutrino mass is  $\langle m_\nu \rangle < 0.33-0.62$  eV, where the range is determined by existing uncertainties on the calculations of the NMEs [16–20] and phase space factors [21,22]. The upper value 0.62 eV is lower than the upper value previously reported in our rapid communication [7], because of the use of the new NME calculation from [16], which is an update of the previous calculation [23].

We also derive constraints on other lepton-number violating models: the supersymmetric models, the right-left symmetric models, and Majoron emission.

In supersymmetric models, the  $0\nu\beta\beta$  process can be mediated by the exchange of a gluino or neutralino. Using the obtained limit of  $T_{1/2}(0\nu\beta\beta) > 1.1 \times 10^{24}$  yr and the NME from [24] an upper bound is obtained on the trilinear  $R$ -parity violating supersymmetric coupling of  $\lambda'_{111} < (4.4-6.0) \times 10^{-2} f$ , where

$$f = \left( \frac{M_{\tilde{q}}}{1 \text{ TeV}} \right)^2 \left( \frac{M_{\tilde{g}}}{1 \text{ TeV}} \right)^{1/2}, \quad (10)$$

and  $M_{\tilde{q}}$  and  $M_{\tilde{g}}$  represent the squark and gluino masses.

Right-left symmetric models include right-handed currents in the electroweak Lagrangian that predict different

TABLE IX. Observed and median expected lower limits on half-lives of lepton number violating processes (in units of  $10^{24}$  yr) at the 90% C.L. using statistical and systematical uncertainties. The observed lower limits are also given using only statistical uncertainties.

$0\nu\beta\beta$ mechanism	Statistical		Including systematics Expected		
	Observed	Observed	-1 SD	Median	+1 SD
Mass mechanism	1.1	1.1	0.7	1.0	1.4
RH current $\langle\lambda\rangle$	0.7	0.6	0.4	0.5	0.8
RH current $\langle\eta\rangle$	1.0	1.0	0.6	0.9	1.3
Majoron	0.050	0.044	0.027	0.039	0.059

angular and energy distributions of the final state electrons from the  $0\nu\beta\beta$  decays. The NEMO-3 experiment, with the topological information for the two final-state electrons, can discriminate between the topologies from different mechanisms [25]. The corresponding half-life limits are given in Table IX and translate into an upper bound on the coupling between right-handed quark and lepton currents of  $\langle\lambda\rangle < (0.9\text{--}1.3) \times 10^{-6}$  and into an upper bound on the coupling between right-handed quark and left-handed lepton currents of  $\langle\eta\rangle < (0.5\text{--}0.8) \times 10^{-8}$ . The constraints are obtained using the NME calculations from [26–28].

The  $0\nu\beta\beta$  decay could also be accompanied by a Majoron ( $M$ ), which is a light or massless boson that weakly couples to the neutrino [29]. In this case the energy sum of the two emitted electrons,  $E_{\text{tot}}$ , will have a broad spectrum in the range  $[0\text{--}Q_{\beta\beta}]$ . The shape will depend on the spectral index  $n$ , which determines the phase space dependence on the energy released in the decay,  $G^{\text{ov}} \propto (Q_{\beta\beta} - E_{\text{tot}})^n$ . The lower bound on the half-life of the  $0\nu\beta\beta$  decay with the spectral index  $n = 1$  is given in Table IX. The limit is set using the same method as the one used to extract the limit on the  $0\nu\beta\beta$  half-life with the energy sum of the two emitted electrons,  $E_{\text{tot}}$ . This limit is almost a factor of 2 more stringent than the previous best limit for this isotope [30]. Taking into account the phase space factors given in [31] and the NME calculated in

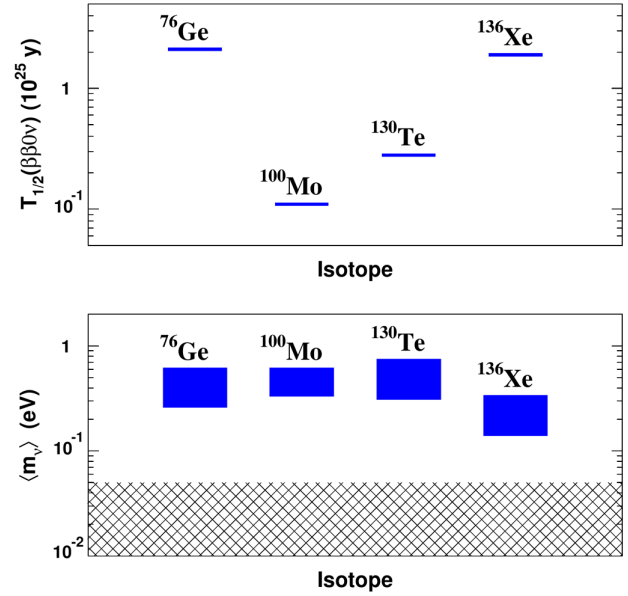


FIG. 20 (color online). The 90% C.L. lower limits on  $T_{1/2}(0\nu\beta\beta)$  for the light Majorana neutrino mass mechanism and upper limits on the effective Majorana neutrino mass  $\langle m_\nu \rangle$  using the same NME calculations [16–20] and recent phase space calculations [21,22]. The shaded regions correspond to the ranges from using different NME calculations. The hatched area corresponds to the expected range for  $\langle m_\nu \rangle$ , calculated from the neutrino oscillation parameters and assuming the inverted neutrino mass hierarchy.

[16–20], an upper bound on the Majoron-neutrino coupling constant is obtained,  $\langle g_{ee} \rangle < (1.6\text{--}3.0) \times 10^{-5}$ .

The limits on lepton number violating parameters obtained here have comparable sensitivity to the best current results obtained with other isotopes, as shown in Table X and in Fig. 20 for the light Majorana neutrino mass mechanism.

## VII. CONCLUSIONS

We have presented results based on an analysis of the full NEMO-3 data set with an exposure of  $34.3 \text{ kg} \cdot \text{yr}$  of

TABLE X. Limits at the 90% C.L. on half-lives and lepton number violating parameters. Published experimental constraints on  $\langle m_\nu \rangle$  and recalculated values with NMEs from Refs. [16–20,32] are also given.

	Half-Life ( $10^{25}$ yr)	$\langle m_\nu \rangle$ (eV)	$\langle m_\nu \rangle_{\text{rec}}$ (eV)	$\langle\lambda\rangle$ ( $10^{-6}$ )	$\langle\eta\rangle$ ( $10^{-8}$ )	$\lambda'_{111}/f$ ( $10^{-2}$ )	$\langle g_{ee} \rangle$ ( $10^{-5}$ )
$^{100}\text{Mo}$ [this work]	0.11	0.33–0.62	0.33–0.62	0.9–1.3 <sup>a</sup>	0.5–0.8 <sup>a</sup>	4.4–6.0	1.6–3.0 <sup>a</sup>
$^{130}\text{Te}$ [33,34]	0.28	0.3–0.71	0.31–0.75	1.6–2.4 <sup>b</sup>	0.9–5.3 <sup>b</sup>		17–33 <sup>c</sup>
$^{136}\text{Xe}$ [35,36]	1.9	0.14–0.34	0.14–0.34				0.8–1.6
$^{76}\text{Ge}$ [37]	2.1	0.2–0.4	0.26–0.62				
$^{76}\text{Ge}$ [38,39]	1.9	0.35	0.27–0.65	1.1	0.64		8.1

<sup>a</sup>Obtained with half-lives in Table IX.

<sup>b</sup>Using the half-life limit of  $2.1 \times 10^{23}$  yr

<sup>c</sup>Using the half-life limit of  $2.2 \times 10^{21}$  yr.

$^{100}\text{Mo}$ , which corresponds to 4.96 effective years of data collection and 6.914 kg of  $^{100}\text{Mo}$ . The calibration of the calorimeter, the long-term stability of data taking, and the determination of the backgrounds are discussed in detail. No evidence for  $0\nu\beta\beta$  decays of  $^{100}\text{Mo}$  has been found, as previously reported in our rapid communication [7]. Taking into account statistical and systematic uncertainties, the limit on the  $0\nu\beta\beta$  decay half-life with decay kinematics similar to that for light Majorana neutrino exchange is  $T_{1/2}(0\nu\beta\beta) > 1.1 \times 10^{24}$  yr (90% C.L.). The corresponding limit on the effective Majorana neutrino mass is in the range  $\langle m_\nu \rangle < 0.33\text{--}0.62$  eV, depending on the NME calculation used in the derivation.

Studies of the backgrounds using various decay channels, radioactive sources, and HPGe measurements before the installation of the detector are used to construct and validate a detailed model of the background. In Phase II, the expected background rate in the  $0\nu\beta\beta$  signal region  $E_{\text{tot}} = [2.8\text{--}3.2]$  MeV is  $0.44 \pm 0.13$  counts/yr/kg. About half of this background is expected to be  $2\nu\beta\beta$  decays of  $^{100}\text{Mo}$ , and the remaining background is caused in roughly equal parts by the radon gas contamination inside the tracking chamber, which is about  $5$  mBq/m<sup>3</sup>, and by  $^{208}\text{Tl}$  contamination inside the  $^{100}\text{Mo}$  foils, which is between  $90\text{--}130$   $\mu\text{Bq/kg}$  depending on the type of foil. No background events are observed in the region of  $E_{\text{tot}} = [3.2\text{--}10]$  MeV for NEMO-3 sources containing isotopes

with  $Q_{\beta\beta} < 3.2$  MeV ( $^{100}\text{Mo}$ ,  $^{82}\text{Se}$ ,  $^{130}\text{Te}$ ,  $^{116}\text{Cd}$ ), or in the copper foil, which is not a double- $\beta$  emitter, during the entire running period corresponding to an exposure of  $47$  kg  $\cdot$  yr.

This low level of background demonstrates that an extremely low level of non-double- $\beta$  background can be achieved by the future SuperNEMO experiment, which will employ the NEMO-3 technique. The SuperNEMO collaboration proposes to search for  $0\nu\beta\beta$  decays using  $100$  kg of double- $\beta$  isotopes [25]. The  $2\nu\beta\beta$  background will be further reduced by improving the energy resolution and by measuring an isotope with a long  $2\nu\beta\beta$  half-life, currently assumed to be  $^{82}\text{Se}$ . Other favorable isotopes, such as  $^{150}\text{Nd}$  and  $^{48}\text{Ca}$ , are also studied. A first SuperNEMO demonstrator module, currently under construction, will contain  $7$  kg of  $^{82}\text{Se}$ . The objective is to demonstrate that the background can be reduced by 1–2 orders of magnitude compared to the NEMO-3 detector.

## ACKNOWLEDGMENTS

The authors would like to thank the Modane Underground Laboratory staff for their technical assistance in running the experiment. We acknowledge support by the grants agencies of the Czech Republic, CNRS/IN2P3 in France, RFBR in Russia, STFC in the U.K. and NSF in the U.S.

- 
- [1] P. Minkowski, *Phys. Lett. B* **67**, 421 (1977); T. Yanagida, *Prog. Theor. Phys.* **64**, 1103 (1980); M. Gell-Mann, P. Ramond, and R. Slansky, in *Proceedings of the Supergravity Stony Brook Workshop, New York 1979*, edited by P. Van Nieuwenhuizen and D. Freedman (1979); R. N. Mohapatra and G. Senjanović, *Phys. Rev. Lett.* **44**, 912 (1980).
- [2] M. Fukugita and T. Yanagida, *Phys. Lett. B* **174**, 45 (1986).
- [3] J. Schechter and J. W. F. Valle, *Phys. Rev. D* **25**, 2951 (1982).
- [4] R. Arnold *et al.*, *Nucl. Instrum. Methods Phys. Res., Sect. A* **536**, 79 (2005).
- [5] S. Rahaman *et al.*, *Phys. Lett. B* **662**, 111 (2008).
- [6] R. Arnold *et al.*, *Phys. Rev. Lett.* **95**, 182302 (2005).
- [7] R. Arnold *et al.*, *Phys. Rev. D* **89**, 111101 (2014).
- [8] GEANT detector description and simulation tool, CERN Program Library Long Writeup W5013 (1995).
- [9] O. A. Ponkratenko, V. I. Tretyak, and Yu. G. Zdesenko, *Phys. At. Nucl.* **63**, 1282 (2000).
- [10] J. Argyriades *et al.*, *Nucl. Instrum. Methods Phys. Res., Sect. A* **606**, 449 (2009).
- [11] R. Arnold *et al.*, *Phys. Rev. Lett.* **107**, 062504 (2011).
- [12] J. Abad *et al.*, *Ann. Fis. A* **80**, 9 (1984); P. Domin, S. Kovalenko, F. Šimkovic, and S. V. Semenov, *Nucl. Phys.* **A753**, 337 (2005).
- [13] K. A. Olive *et al.* (Particle Data Group), *Chin. Phys. C* **38**, 090001 (2014).
- [14] T. Junk, *Nucl. Instrum. Methods Phys. Res., Sect. A* **434**, 435 (1999).
- [15] J. Argyriades *et al.*, *Phys. Rev. C* **80**, 032501 (2009).
- [16] J. Hyvarinen and J. Suhonen, *Phys. Rev. C* **91**, 024613 (2015).
- [17] F. Šimkovic, V. Rodin, A. Faessler, and P. Vogel, *Phys. Rev. C* **87**, 045501 (2013).
- [18] J. Barea, J. Kotila, and F. Iachello, *Phys. Rev. C* **91**, 034304 (2015).
- [19] P. K. Rath, R. Chandra, K. Chaturvedi, P. Lohani, P. K. Raina, and J. G. Hirsch, *Phys. Rev. C* **88**, 064322 (2013).
- [20] T. R. Rodriguez and G. Martinez-Pinedo, *Phys. Rev. Lett.* **105**, 252503 (2010).
- [21] J. Kotila and F. Iachello, *Phys. Rev. C* **85**, 034316 (2012).
- [22] S. Stoica and M. Mirea, *Phys. Rev. C* **88**, 037303 (2013); updated in arXiv:1411.5506.

- [23] J. Suhonen and O. Civitarese, *J. Phys. G* **39**, 124005 (2012).
- [24] A. Faessler, G.L. Fogli, E. Lisi, A.M. Rotunno, and F. Šimkovic, *Phys. Rev. D* **83**, 113015 (2011).
- [25] R. Arnold *et al.*, *Eur. Phys. J. C* **70**, 927 (2010).
- [26] J. Suhonen, *Nucl. Phys. A* **700**, 649 (2002).
- [27] T. Tomoda, *Rep. Prog. Phys.* **54**, 53 (1991).
- [28] K. Muto, E. Bender, and H. V. Klapdor, *Z. Phys. A* **334**, 187 (1989).
- [29] P. Bamert, C. P. Burgess, and R. N. Mohapatra, *Nucl. Phys. B* **449**, 25 (1995).
- [30] R. Arnold *et al.*, *Nucl. Phys. A* **765**, 483 (2006).
- [31] M. Doi, T. Kotani, and E. Takasugi, *Phys. Rev. D* **37**, 2575 (1988).
- [32] J. Menendez, A. Poves, E. Caurier, and F. Nowacki, *Nucl. Phys. A* **818**, 139 (2009).
- [33] E. Andreotti *et al.*, *Astropart. Phys.* **34**, 822 (2011).
- [34] C. Arnaboldi *et al.*, *Phys. Lett. B* **557**, 167 (2003).
- [35] A. Gando *et al.*, *Phys. Rev. Lett.* **110**, 062502 (2013).
- [36] A. Gando *et al.*, *Phys. Rev. C* **86**, 021601 (2012).
- [37] M. Agostini *et al.*, *Phys. Rev. Lett.* **111**, 122503 (2013).
- [38] H. V. Klapdor-Kleingrothaus *et al.*, *Eur. Phys. J. A* **12**, 147 (2001).
- [39] M. Günther *et al.*, *Phys. Rev. D* **55**, 54 (1997).