



# Evidence-Based Evaluation of a Ventilator Management Clinical Practice Protocol



Kyle Mills, BSN, RN, CCRN, MSN student  
Dr. Michelle McClave, EdD, MSN, RN, mentor  
MSN/FNP Program, Department of Nursing

## Introduction

Nursing care and management of mechanically ventilated patients requires specific care elements to be achieved in order for optimal patient outcomes.

The ventilator management policy guides nursing care for this select group of patients.

The ventilator management policy of a rural community acute healthcare facility was evaluated for evidence-based validity using the AGREE GRS rating scale.

The evaluation process included interviewing the intensive care unit director to obtain insight on activities performed by ICU staff while providing care for mechanically ventilated patients and reviewing the most current evidence-based practice protocols.

## Protocol Review

Nurses, respiratory therapists, and physicians collaborate to provide continuity of care for mechanically ventilated patients (Three Rivers Medical Center, 2020).

Assess status of endotracheal tube and cuff (Hyzy, 2020).

Ensure nurse call light within reach of patient at all times (Three Rivers Medical Center, 2020).

Maintain head-of-bed greater than 30 degrees unless contraindicated (Klompas, 2019).

Ambu-bag and mask kept at bedside for manual ventilation (Hess, 2020).

Position endotracheal tube to prevent kinking and dislodgement (Hyzy, 2020).

Empty water condensation from tubing (Hess, 2020).

Educate patient and family on importance of endotracheal tube (Three Rivers Medical Center, 2020).

Consult with physician to address means for patient comfort and sedation (Three Rivers Medical Center, 2020).

Use bite block with oral endotracheal tube to prevent occlusion of the tube (Three Rivers Medical Center, 2020).

Provide oral care per policy (Three Rivers Medical Center, 2020).

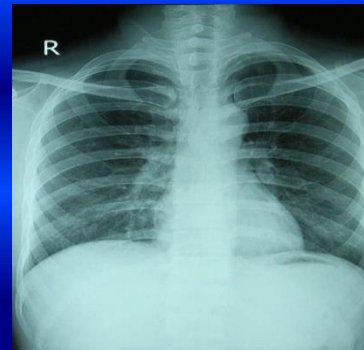
Ensure proper nursing documentation (Three Rivers Medical Center, 2020).

## Results

After evaluating the ventilator management policy using the AGREE GRS rating scale the following results were found:

- The policy included the most up-to-date clinical recommendations for improving patient outcomes.
- The policy's recommendations were consistent with current evidence-based practice care guidelines for mechanically ventilated patients.
- The policy directs nursing and ancillary care practices for optimization of patient care delivery to provide positive patient outcomes.

The ventilator management policy was determined to meet the unique care needs for ventilator patients. The policy provides the most current evidence-based clinical care practice recommendations for mechanically ventilated patients.



### References

Hess, D. (2020). The ventilator circuit. *UpToDate*. Retrieved April 30, 2020, from [https://www.uptodate.com.msu.idm.oclc.org/contents/the-ventilator-circuit?search=ventilator%20circuit&source=search\\_result&selectedTitle=1-150&usage\\_type=default&display\\_rank=1#H11](https://www.uptodate.com.msu.idm.oclc.org/contents/the-ventilator-circuit?search=ventilator%20circuit&source=search_result&selectedTitle=1-150&usage_type=default&display_rank=1#H11)

Hyzy, R. C. (2019). Complications of the endotracheal tube following initial placement: Prevention and management in adult intensive care unit patients. *UpToDate*. Retrieved April 30, 2020 from [https://www.uptodate.com.msu.idm.oclc.org/contents/complications-of-the-endotracheal-tube-following-initial-placement-prevention-and-management-in-adult-intensive-care-unit-patients?sectionName=Succioning%20and%20oral%20care&search=risk%20factors%20and%20prevention%20of%20ventilator%20asso%20iated&topicRef=6995&anchor=H6&source=see\\_link#H6](https://www.uptodate.com.msu.idm.oclc.org/contents/complications-of-the-endotracheal-tube-following-initial-placement-prevention-and-management-in-adult-intensive-care-unit-patients?sectionName=Succioning%20and%20oral%20care&search=risk%20factors%20and%20prevention%20of%20ventilator%20asso%20iated&topicRef=6995&anchor=H6&source=see_link#H6)

Klompas, M. (2019). Risk factors and prevention of hospital-acquired and ventilator-associated pneumonia in adults. *UpToDate*. Retrieved April 30, 2020 from [https://www.uptodate.com.msu.idm.oclc.org/contents/risk-factors-and-prevention-of-hospital-acquired-and-ventilator-associated-pneumonia-in-adults?search=risk%20factors%20and%20prevention%20of%20ventilator%20asso%20iated&topicRef=1640&source=see\\_link#H15](https://www.uptodate.com.msu.idm.oclc.org/contents/risk-factors-and-prevention-of-hospital-acquired-and-ventilator-associated-pneumonia-in-adults?search=risk%20factors%20and%20prevention%20of%20ventilator%20asso%20iated&topicRef=1640&source=see_link#H15)

Three Rivers Medical Center. (2020). Ventilator management policy. Available at Three Rivers Medical Center Intranet.