



University of Dundee

Why are flare ribbons associated with the spines of magnetic null points generically elongated?

Pontin, David; Galsgaard, Klaus; Démoulin, Pascal

Published in:
Solar Physics

DOI:
[10.1007/s11207-016-0919-9](https://doi.org/10.1007/s11207-016-0919-9)

Publication date:
2016

Document Version
Publisher's PDF, also known as Version of record

[Link to publication in Discovery Research Portal](#)

Citation for published version (APA):

Pontin, D., Galsgaard, K., & Démoulin, P. (2016). Why are flare ribbons associated with the spines of magnetic null points generically elongated? *Solar Physics*, 291(6), 1739-1759. DOI: 10.1007/s11207-016-0919-9

General rights

Copyright and moral rights for the publications made accessible in Discovery Research Portal are retained by the authors and/or other copyright owners and it is a condition of accessing publications that users recognise and abide by the legal requirements associated with these rights.

- Users may download and print one copy of any publication from Discovery Research Portal for the purpose of private study or research.
- You may not further distribute the material or use it for any profit-making activity or commercial gain.
- You may freely distribute the URL identifying the publication in the public portal.

Take down policy

If you believe that this document breaches copyright please contact us providing details, and we will remove access to the work immediately and investigate your claim.

Why Are Flare Ribbons Associated with the Spines of Magnetic Null Points Generically Elongated?

David Pontin¹ · Klaus Galsgaard² · Pascal Démoulin³

Received: 3 March 2016 / Accepted: 20 May 2016

© The Author(s) 2016. This article is published with open access at Springerlink.com

Abstract Coronal magnetic null points exist in abundance, as demonstrated by extrapolations of the coronal field, and have been inferred to be important for a broad range of energetic events. These null points and their associated separatrix and spine field lines represent discontinuities of the field line mapping, making them preferential locations for reconnection. This field line mapping also exhibits strong gradients adjacent to the separatrix (fan) and spine field lines, which can be analysed using the “squashing factor”, Q . In this article we analyse in detail the distribution of Q in the presence of magnetic nulls. While Q is formally infinite on both the spine and fan of the null, the decay of Q away from these structures is shown in general to depend strongly on the null-point structure. For the generic case of a non-radially-symmetric null, Q decays most slowly away from the spine or fan in the direction in which $|B|$ increases most slowly. In particular, this demonstrates that the extended elliptical high- Q halo around the spine footpoints observed by Masson *et al.* (*Astrophys. J.* **700**, 559, 2009) is a generic feature. This extension of the Q halos around the spine or fan footpoints is important for diagnosing the regions of the photosphere that are magnetically connected to any current layer that forms at the null. In light of this, we discuss how our results can be used to interpret the geometry of observed flare ribbons in circular ribbon flares, in which typically a coronal null is implicated. We conclude that both the physics in the vicinity of the null and how this is related to the extension of Q away from the spine or fan can be used in tandem to understand observational signatures of reconnection at coronal null points.

✉ D. Pontin
d.i.pontin@dundee.ac.uk

K. Galsgaard
kg@nbi.ku.dk

P. Démoulin
pascal.demoulin@obspm.fr

¹ School of Science & Engineering, University of Dundee, Dundee, DD1 4HN, UK

² Niels Bohr Institute, Geological Museum, Østervoldgade 5-7, 1350 Copenhagen K, Denmark

³ LESIA, UMR 8109 (CNRS), Observatoire de Paris, 92195 Meudon Principal Cedex, France

Keywords Magnetic fields, corona · Flares, relation to magnetic field · Magnetic reconnection, observational signatures

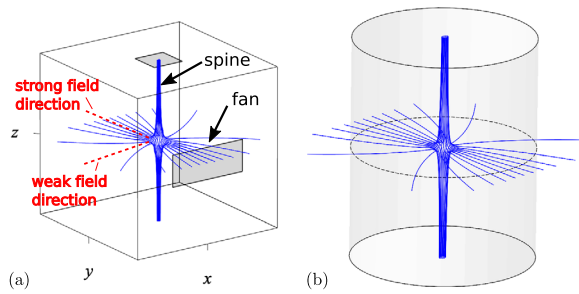
1. Introduction

As new generations of solar telescopes allow ever more detailed views of the Sun's atmosphere, the link between magnetic topological structures and observed sites of energy release becomes increasingly apparent. The magnetic structure of the corona is highly complex over a broad range of scales as a result of the complex array of magnetic polarities that appear in a continually evolving pattern on the photosphere. The magnetic flux from each polarity region on the photosphere generically connects to many other flux patches of opposite polarity. The structure of the associated coronal magnetic field can appear bewilderingly complex, but advances in theory, modelling, and observations have allowed a characterisation of the key features of the 3D structure, such as likely sites for dynamic events to take place. One particular tool for analysing the coronal field structure is the magnetic field line mapping between positive and negative polarity regions of the photosphere. In particular, field lines along which this mapping is discontinuous, usually "separatrix surfaces" associated with magnetic null points, or in which it has strong gradients, that is, at "quasi-separatrix layers" (QSLs), are now known to be likely sites for current accumulation and energy dissipation. These structures are defined and discussed in the following section.

In the past 20 years, a wealth of observational evidence has accumulated for energy release at both magnetic null points and QSLs in the form of flares, jets, and bright points (*e.g.* Démoulin *et al.*, 1997; Fletcher *et al.*, 2001; Mandrini *et al.*, 2006; Luoni *et al.*, 2007; Masson *et al.*, 2009; Liu *et al.*, 2011; Zhang *et al.*, 2012). In each of these cases, the magnetic field structure in the corona must be inferred by employing some extrapolation method that uses the observed photospheric field as a boundary condition. One particular recent focus has been to understand in flaring regions how the observed H α flare ribbons map to the coronal magnetic field structure and what can subsequently be deduced about the flare energy release process. In configurations containing QSLs, the footprints of these QSLs have been shown to be co-located with observed ribbons (Démoulin *et al.*, 1993; Dalmasse *et al.*, 2015; Savcheva *et al.*, 2015, 2016). In specific cases a magnetic null point is also present. It has a fan separatrix and spines that define the topology of the magnetic configuration, and since the vicinity of the null is a preferential site for current accumulation and reconnection, the footprints of the spine and fan structures are often where the flare ribbons are located. While the fan surface footprint naturally defines elongated ribbons, the spine lines define locally compact regions, so that compact ribbons would be expected. However, the ribbons at the spine footprints are also observed to be elongated. A link is observed between this elongation and the squashing degree Q surrounding the fan and spines (*e.g.* Mandrini *et al.*, 2006); the reason for this link is explored here. Masson *et al.* (2009) observed a so-called circular flare ribbon associated with the footprint of the separatrix surface of a coronal null point, and they noted again the elongation of the spine footprint ribbons. Since this observation, several other studies have confirmed that these findings are generic (Wang and Liu, 2012; Yang, Guo, and Ding, 2015; Liu *et al.*, 2015).

In this article we elucidate the link between the null-point magnetic field structure, the geometries of associated features in the field line mapping, and the expected locations of flare ribbons. This is done by analysing the field line mapping in the vicinity of generic 3D null-point structures and relating this to the known properties of current sheet formation and magnetic reconnection around these nulls. The article is organised as follows. We

Figure 1 Boundary surfaces used for the calculation of the squashing factor Q or Q_{\perp} in (a) Section 3.2 and (b) Section 3.3. Field lines are plotted for $k = 0.4$ (k defines the asymmetry of the null-point field as defined by Equation (2)).



start in Section 2 by discussing some necessary background on 3D magnetic topology and reconnection. In Sections 3 and 5 the field line mapping in a linear null configuration and coronal separatrix dome configuration are analysed, respectively. In Section 4 the field line mapping is studied in the context of magnetic reconnection around the null point in MHD simulations. We conclude in Section 6 with a discussion.

2. Background

2.1. Magnetic Null Points

In this article we examine magnetic null points in the solar corona. These coronal null points have been demonstrated to exist in abundance by various surveys of coronal magnetic field extrapolations, both potential and force free (Régnier, Parnell, and Haynes, 2008; Edwards and Parnell, 2015; Freed, Longcope, and McKenzie, 2015). A magnetic null is simply a location in space at which the magnetic field strength is exactly zero, $\mathbf{B} = \mathbf{0}$, and in three dimensions (3D) this condition is met generically only at isolated points. The magnetic field in the vicinity of the null is characterised by a pair of spine field lines that asymptotically approach (or recede from) the null, and a fan surface within which field lines radiate away from (or approach) the null point, see Lau and Finn (1990), Parnell *et al.* (1996) for a full description, and Figure 1 for a visualisation. The fan surface forms a separatrix surface in the field, distinguishing two volumes of magnetic flux within which the field line connectivity is topologically distinct.

The simplest generic coronal structure involving a magnetic null point occurs when a parasitic polarity region on the photosphere is surrounded by a polarity region (or regions) of the opposite sign (and greater total flux). In this configuration a magnetic null is located where the field contributions from the two polarities cancel. The fan separatrix surface then forms a dome structure and separates flux connecting the dominant polarity to the parasitic polarity (beneath the dome) from that which connects from the dominant polarity to locations farther away on the photosphere. The effect of reconnection in such a separatrix dome configuration has been considered by Edmondson *et al.* (2010) and Pontin, Priest, and Galsgaard (2013). Null points and their associated separatrix surfaces also occur in more complicated topological configurations involving multiple null points, separatrix surfaces, and separators (separatrix surface intersections), see for example Platten *et al.* (2014). However, here we restrict our analysis to a single null point, considering a separatrix dome configuration in Section 5.

Three-dimensional null points are *one* of the preferential sites for reconnection in the corona. This is because in the perfectly conducting limit, singular current layers are known

to form at the null when rather general perturbations are applied (Pontin and Craig, 2005). Therefore, regardless of how small the dissipation, non-ideal processes will eventually become important as the field around the null point collapses. We note that in an equilibrium there should be zero current at the null, since in general a pressure gradient cannot balance the Lorentz force in the vicinity of the null (Parnell *et al.*, 1997). Any non-zero current at the null will in general lead to a Lorentz force that drives the null point to collapse to form a current sheet (Klapper, Rado, and Tabor, 1996; Pontin and Craig, 2005; Fuentes-Fernández and Parnell, 2012; Craig and Pontin, 2014). The resulting reconnection may take different forms, the most general mode of reconnection being *spine-fan reconnection* that is associated with transfer of magnetic flux across the separatrix surface. This process in principle permits the release of significant stored magnetic energy (Antiochos, 1996; Pontin, Bhattacharjee, and Galsgaard, 2007; Parlat, Antiochos, and DeVore, 2009; Pontin, Priest, and Galsgaard, 2013). There are also two other modes of reconnection at 3D nulls *torsional-spine* and *torsional-fan reconnection* which involve a rotational slippage of field lines around the spine but involve no flux transfer across the separatrix (Pontin, 2011).

2.2. The Squashing Factor and Quasi-Separatrix Layers

The principal reason why magnetic null points were first proposed as sites of current accumulation and therefore magnetic reconnection in 3D is that at the null the field line mapping is discontinuous. It is now well established that 3D reconnection may also occur in the absence of null points or separatrices, and in particular the natural sites for the formation of intense current layers are the regions in which the field line mapping exhibits strong gradients. Analysis of these gradients is typically performed by evaluating the (covariant) squashing degree, defined for planar boundaries by

$$Q = \frac{(\partial U/\partial u)^2 + (\partial U/\partial v)^2 + (\partial V/\partial u)^2 + (\partial V/\partial v)^2}{|(\partial U/\partial u)(\partial V/\partial v) - (\partial U/\partial v)(\partial V/\partial u)|}, \quad (1)$$

where u and v are field line footpoints on the launch boundary, and U and V are the footpoint locations on the target boundary (Titov, Hornig, and Démoulin, 2002). The general expression for non-planar boundaries can be found in Equations (11)–(14) of Titov (2007). We note that the denominator in Equation (1) can also be represented by B_n/B_n^* , where B_n and B_n^* are the field components normal to the boundaries at the launch and target footpoints, respectively. Numerically it is usually more stable to use this expression. One potential weakness of Q as defined in Equation (1) is that the values obtained depend on the orientation at which field lines intersect the launch and target boundaries. An alternative formulation is the perpendicular covariant squashing factor, Q_\perp , as defined in Equations (30)–(36) of Titov (2007), which removes these projection effects by evaluating the mapping deformation for infinitesimal perpendicular planes at the locations of the launch and target surfaces.

Bundles of magnetic field lines along which Q or Q_\perp have high values (much higher than two, which is the minimum value obtained for a uniform field) are known as quasi-separatrix layers, or *QSLs*. It has been demonstrated that these are natural locations for accumulation of intense currents, using both modelling approaches (Titov, Galsgaard, and Neukirch, 2003; Galsgaard, Titov, and Neukirch, 2003; Aulanier, Parlat, and Démoulin, 2005; Effenberger *et al.*, 2011) and solar observations (*e.g.* Démoulin *et al.*, 1997; Mandrini *et al.*, 2006). The term QSL comes from the fact that true separatrices can be thought of as a limiting case of a QSL (see Démoulin, 2006, for a detailed exposition). In particular, Q is by definition infinite at a separatrix due to the discontinuity in the field line mapping. In addition, Q must also be large but finite in the region adjacent to the separatrix. We focus on this in Section 3.

2.3. The Nature of 3D Reconnection

To understand the energy release mediated by magnetic reconnection in 3D, it is important to understand a key property of 3D reconnection. Specifically, in contrast to the 2D case, reconnection in 3D always occurs in a finite volume. That is, rather than field lines breaking and rejoining at a single point (the X-point) as in 2D, field lines change connectivity continuously throughout the (finite-sized) non-ideal region (Priest, Hornig, and Pontin, 2003). This non-ideal region is in general any region within which the electric field component parallel to the magnetic field (E_{\parallel}) is non-zero, and for which $\int E_{\parallel} ds \neq 0$, where the integral is evaluated along field lines (Schindler, Hesse, and Birn, 1988). A consequence of the breaking and rejoining of field lines throughout the non-ideal region is as follows. For reconnection in the absence of separatrices, for example at QSLs, there is an everywhere continuous “flipping” or “slipping” of reconnecting field lines (Priest and Démoulin, 1995). We can also distinguish this flipping motion further, to slipping or slip-running, depending on whether the velocity of the apparent field line motion is sub- or super-Alfvénic, respectively (Aulanier *et al.*, 2006). These slipping motions are now observed during energy release in the corona (Aulanier *et al.*, 2007; Sun *et al.*, 2013; Li and Zhang, 2014; Dudík *et al.*, 2014).

All of the above statements hold true for 3D null-point reconnection. In particular, the reconnection occurs not only at the null point itself, but throughout the non-ideal region (current sheet) surrounding the null (Pontin, Hornig, and Priest, 2004, 2005). This means that what we call null-point reconnection is more precisely reconnection that occurs within a finite region (the current layer) surrounding a null; the importance of the null being that it is a favourable site for intense currents to develop (as described above). There is still a continuous change of field line connectivity within the current sheet, and an apparent flipping motion of field lines. However, in the presence of a null, there is also one discontinuous jump of connectivity for every field line that is reconnected through either the spine of the null or the separatrix (fan) surface. If there is a null point in the non-ideal region for a given reconnection event, then the field line velocity must by necessity be slip-running near the null, since it is infinite at the spine or fan. For a single null point in a separatrix dome configuration, which we examine below, the expected patterns of the field line slippage motions were described in detail by Pontin, Priest, and Galsgaard (2013).

3. Linear Null Point

3.1. Preliminaries

In the following section we examine the distribution of the squashing degree, Q , in the vicinity of null points. First we consider the simplest case of a linear null point. We note that any generic 3D null point can be represented locally (*i.e.* sufficiently close to the null) by this linearisation, and conversely, for the null point to be topologically stable, the linear term in the Taylor expansion of \mathbf{B} about the null point must be non-zero (Hornig and Schindler, 1996). (Topological stability implies that an arbitrary perturbation does not destroy the topology, in contrast to the case where the first non-zero term is the quadratic term. Those higher order nulls are topologically unstable since an arbitrary perturbation of \mathbf{B} changes the topology.) We note that two factors influence the variation of Q in the vicinity of a null point and associated separatrix: one is that Q is formally infinite for spine and fan field lines as a result of the discontinuity in the field line mapping. There is then a characteristic decay of Q away from these field lines. The other factor is that field lines in the fan surface typically become

oriented parallel to one of the fan eigenvectors (corresponding to the largest fan eigenvalue) at larger distances. This naturally means there is a stronger divergence of field lines away from the fan eigenvector direction corresponding to the smaller fan eigenvalue. This leads to a rotational asymmetry of the decay of Q away from the spine and fan, as demonstrated below.

Evaluation of the squashing factor requires that we select two surfaces that each field line intersects once and only once. We consider two cases: in the first case we take both boundaries to be planar (Figure 1a), and in the second case we take a plane of constant z and a circular cylinder surface (see Figure 1b). When both surfaces are planar, we can obtain exact expressions for Q and Q_{\perp} , whereas for the cylindrical boundary we must evaluate them numerically.

3.2. Squashing Factor Between Two Planar Boundaries

Consider an equilibrium magnetic null point (zero current). The field can be represented by

$$\mathbf{B} = B_0 \begin{pmatrix} k & 0 & 0 \\ 0 & 1-k & 0 \\ 0 & 0 & -1 \end{pmatrix} \begin{pmatrix} x \\ y \\ z \end{pmatrix} + \mathcal{O}(r^2), \quad (2)$$

with $0 < k < 1$, where we have chosen to orient the coordinate system such that the spine lies along the z -axis, the fan surface is coincident with the $z = 0$ plane, and the two fan eigenvectors of $\nabla \mathbf{B}$ are parallel to the x and y axes. The corresponding eigenvalues are unequal when $k \neq 1/2$, and in the xy -plane the field strength increases most quickly away from the origin along the direction of the eigenvector associated with the largest eigenvalue, which is the x -direction for $1/2 < k < 1$. We refer below to this direction as the strong-field direction in the fan, and correspondingly to the orthogonal direction as the weak-field direction. In the corona, we would in general expect field lines in the strong-field direction to connect to the strongest nearby photospheric flux concentrations (although this need not necessarily be the case). Taking two planar boundaries as shown in Figure 1a, we can obtain a mathematical expression for how Q decays away from (for instance) the spine along the strong- and weak-field directions in the fan.

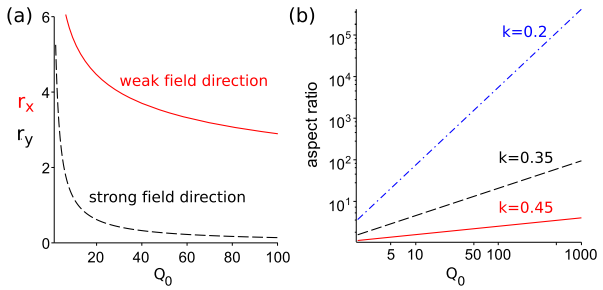
Here we take the launch plane for field lines to be $z = a$ and the target plane to be $x = b$ (a and b constant). That is, we consider the mapping $(x, y, a) \rightarrow (b, Y, Z)$. For simplicity we only examine how Q decays from the spine along the x -axis (setting $Y = y = 0$). This corresponds to the strong-field direction in the fan if $1/2 < k < 1$ and to the weak-field direction for $0 < k < 1/2$. We examine the decay in arbitrary directions in the next section. Setting $y = Y = 0$, we obtain the expression for Q as a function of x , the distance of the launch footpoint from the spine:

$$Q(y=0) = \frac{bk}{a} \left(\frac{x}{b}\right)^{(2-2/k)} + \frac{a}{bk} \left(\frac{x}{b}\right)^{-(2-2/k)}, \quad (3)$$

as shown in Appendix A. We see that, as expected, $Q \rightarrow \infty$ as $x \rightarrow 0$ (the spine footpoint). We are interested in the behaviour for small x , and since $0 < k < 1$, the relevant term close to the spine is the first one, so that

$$Q(y=0) \approx \frac{bk}{a} \left(\frac{x}{b}\right)^{(2-2/k)}. \quad (4)$$

Figure 2 (a) For fixed $k = 0.35$, $r_x(Q_0)$ (red) and $r_y(Q_0)$ (black dashed), as defined by Equation (7); (b) log–log plot of the aspect ratio r_x/r_y (see Equation (8)), for $a = b$ and fixed $k = 0.45$ (red), $k = 0.35$ (black, dashed) and $k = 0.2$ (blue, dot-dashed).



This implies that in the weak-field region ($0 < k < 1/2$) Q should be larger (for fixed x) since we have a larger negative exponent. This is to be expected given the strong-field line divergence in the xy -plane in this region. Hence a level curve of Q would be expected to be elongated along the weak-field direction. We note that for the rotationally symmetric case ($k = 1/2$) we have that Q decays like $1/r^2$.

Consider now the distribution of Q_{\perp} (see Section 2.2). Evaluating Q_{\perp} on the x -axis as before, we obtain (see Appendix A)

$$Q_{\perp}(y = 0) = \frac{x^4 k^2 [(x/b)^{-2/k} b^2 + a^2] + (x/b)^{2/k} b^4 [a^2 - k^2 x^2]}{k^2 b^2 x^2 \sqrt{k^2 x^2 + a^2} \sqrt{b^2 + a^2 (x/b)^{2/k}}}. \tag{5}$$

For $x \ll b$, we have the same dominant scaling in x as before, specifically

$$Q_{\perp}(y = 0) \approx \frac{bk}{a} \left(\frac{x}{b}\right)^{2-2/k}. \tag{6}$$

The behaviour of Q and Q_{\perp} is identical in the $y = 0$ plane. This is expected since in this plane as we approach the spine and fan the field lines intersect the boundaries approximately perpendicularly.

We now examine the dimensions of contours of Q on the spine boundary ($z = \pm a$). Specifically, we rearrange Equation (3) to find the radius $x = r_x(Q_0)$ at which $Q_{\perp} = Q_0$. Assuming that $x/b \ll 1$, we can directly invert Equation (6) to obtain

$$r_x(Q_0) = b \left(\frac{aQ_0}{bk}\right)^{k/(2k-2)}. \tag{7}$$

We can obtain from this the same information along the y -axis by making the replacement $k \rightarrow 1 - k$ to give $r_y(Q_0)$. As shown in Figure 2a, for $k = 0.35$ the spacing of the Q_{\perp} contours decays more slowly in the weak-field direction, consistent with the arguments given above.

Now we analyse the asymmetry in the Q_{\perp} contour produced by the asymmetry in the null eigenvalues in more detail by examining the relative decay of Q_{\perp} from the spine footpoint along the two axes. Using Equation (7), we have that

$$\frac{r_x(Q_0)}{r_y(Q_0)} = \left(\frac{aQ_0}{b}\right)^{(k-1/2)/(k(k-1))}. \tag{8}$$

In Figure 2b we plot the ratio r_x/r_y for $a = b$ and for three particular values of k . We see that, as expected, this aspect ratio increases as the magnetic field asymmetry increases.

Furthermore, we observe that for high Q_{\perp} values the Q_{\perp} distribution is highly non-circular even for moderate values of k , while lower level contours of Q_{\perp} only show high asymmetry when k is far from 0.5 (note that Figure 2b is a log–log plot). We also note that a full range of degrees of null-point eigenvalue ratios (corresponding to $k \in (0, 1)$) is obtained in solar extrapolations, and even for a moderate asymmetry ($k \approx 0.5$) the eccentricity is significant. For example, Démoulin, Hénoux, and Mandrini (1994) analysed six nulls with $k = 0.08–0.33$, the configuration analysed by Masson *et al.* (2009) contained a null point with $k \approx 0.11$, and Freed, Longcope, and McKenzie (2015) carried out an extensive survey of potential field extrapolations from three years’ worth of magnetogram data, identifying 1924 coronal null points. If we choose the orientation such that for $0 \leq k \leq 0.5$ their data show a relatively uniform distribution of k values between 0.1 and 0.5, with a mean value of k of 0.26 and a standard deviation of 0.11.

3.3. Squashing Factor for a Surface Encircling the Fan

The calculations of the previous section allow us to visualise the Q distribution along the coordinate directions. However, since the vertical planar boundary intersects only a subset of the fan field lines, they do not allow us to visualise the Q distribution all around the spine or fan footpoints. To do this, we must choose a target plane that intersects all fan field lines (such that all field lines passing close to the null intersect both the launch and target surfaces). As such, we now calculate Q between a planar launch surface at $z = a$ intersecting the spine and a cylindrical target surface at $r = b$ encircling the fan, with a, b constant (Figure 1b). That is, we study the mapping generated by the field lines $(x, y, a) \rightarrow (b, \Theta, Z)$. In this case, we are unable to obtain a full analytical expression for the field line mapping and its inverse, and thus we evaluate Q numerically. We integrate between 10^5 and 10^6 field lines from a rectangular grid of starting points at $z = a$ to obtain their intersections with $r = b$, then approximate the derivatives of the mapping using fourth-order-accurate centred differences over that grid. In this case we evaluate Q_{\perp} since especially in the regions of strongly diverging field lines (the weak-field region, around the x -axis for $k < 1/2$) the field lines do not intersect the circular cylinder surface perpendicularly. The number of field lines traced was selected by making a convergence study of the locations of the contours of Q_{\perp} discussed below with resolution of the field line grid; see Pariat and Démoulin (2012) for a detailed discussion of these convergence issues.

The Q_{\perp} maps at $z = a$ for different k are presented in Figure 3. Selected values of Q_{\perp} locations obtained from the planar boundary analysis are also indicated in Figure 3 (with the same colour-coding as the contours). They were obtained from the planar boundary analysis. We see an excellent agreement between the two methods, indicating that the approximation employed in Equations (6) and (7) is good and that the numerical computation of the contours is well-resolved. As predicted by the planar boundary analysis, the Q_{\perp} contours are stretched along the weak-field direction in the fan (x for $k < 1/2$). In addition, the contours do not form simple ellipses, but are pinched in the middle so that their maximum extension is at finite x values. To measure the asymmetry of the Q_{\perp} distribution around the spine, it is therefore arguably most useful to determine the largest extent of these contours along the x and y directions instead of simply examining the profile along the coordinate axes. In Figure 4 we plot (with circles and solid lines) the contour aspect ratio defined as the maximum contour extent along x divided by the maximum extent along y (over all x). The plot demonstrates the same trends as observed in the previous section, specifically that the aspect ratio is greater for both increased null-point asymmetry (smaller k for $k < 0.5$) and for higher Q_{\perp} levels. We note that the qualitative features discussed above are present when Q instead of Q_{\perp} is considered.

Figure 3 Contours of $\log_{10}(Q_{\perp})$ as calculated between surfaces $z = a = 1$ and $r = b = 1$ visualised on $z = 1$ for different k . Contour levels are $\log_{10}(Q_{\perp}) = \{2, 3, 4, 5\}$, and are coloured black, blue, red, and green respectively. Solid circles indicate Q_{\perp} levels estimated from the planar boundary analysis using Equations (6) and (7).

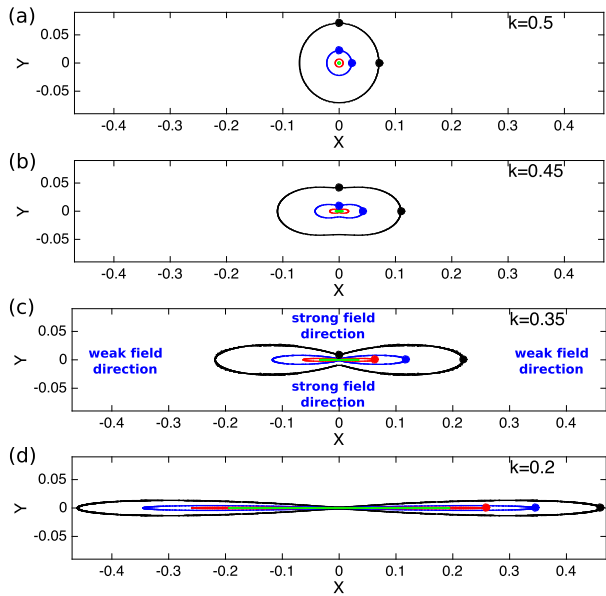
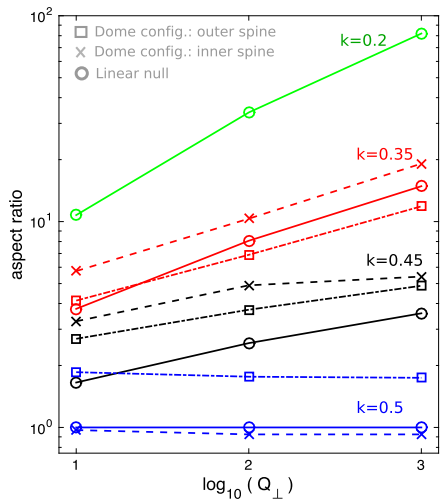


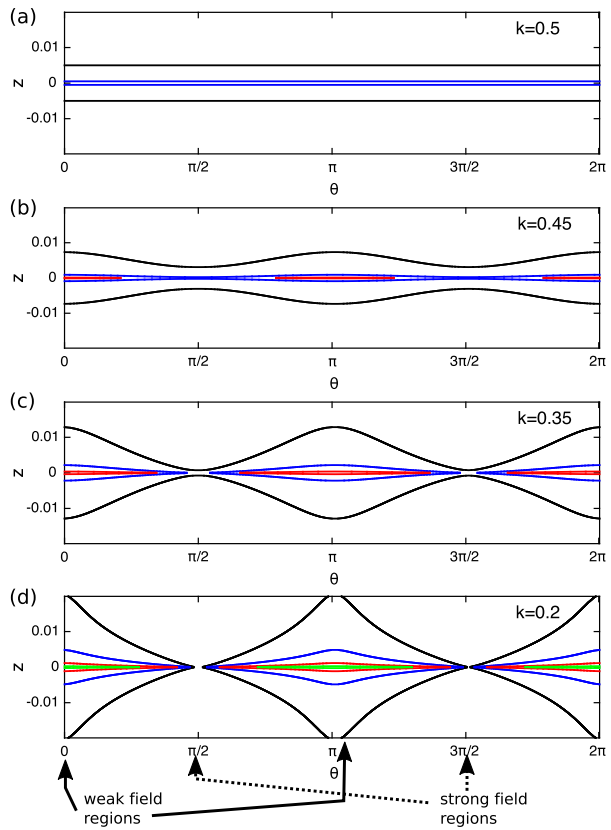
Figure 4 Aspect ratio of Q_{\perp} contours on the spine boundary, defined as the maximum contour extent in the long direction (x for the linear null) divided by the maximum contour extent perpendicular to this (y for the linear null). Circles: Q_{\perp} calculated between the surfaces $z = a = 1$ and $r = b = 1$ for the linear null point in Equation (2). Crosses, squares: Q_{\perp} around the inner and outer spine footpoints, respectively, for the separatrix dome configuration in Equation (11). Blue, $k = 0.5$; black, $k = 0.45$; red, $k = 0.35$; green, $k = 0.2$.



We can now perform the same Q_{\perp} calculation procedure but with the launch and target boundaries reversed to determine the pattern of Q_{\perp} in the vicinity of the fan surface. The results are shown in Figure 5. We observe that Q_{\perp} decreases in some locations and increases in others as we increase the asymmetry of the null. The weak-field region is along the x -axis, which corresponds to $\theta = 0, \pi$, by the usual convention. The widest Q_{\perp} contours are again located in the vicinity of these weak-field directions. That is, for a given distance from the separatrix (height z), Q_{\perp} is largest along the weak-field direction.

The results above are entirely consistent with those of *e.g.* Masson *et al.* (2009). In particular, we see that extended Q_{\perp} (or Q) contours are obtained around the spine for even a moderate degree of null-point asymmetry. Of course other global features of the field might

Figure 5 Contours of $\log_{10}(Q_{\perp})$ as calculated between surfaces $z = a = 1$ and $r = b = 1$ – visualised on $r = 1$ for different k . Contour levels are $\log_{10}(Q_{\perp}) = \{2, 3, 4, 5\}$, and are coloured black, blue, red, and green respectively.



well also contribute, but the figures show that the high- Q region in which the null is embedded is not a special additional feature of the particular field studied by Masson *et al.* (2009), but is rather a natural consequence of having a coronal null that is not rotationally symmetric.

4. Current Layer Formation in MHD Simulations, and Flare Ribbon Locations

4.1. Simulation Set-up and Results

In this section we define the relation between current layers that form at 3D nulls and the distribution of the squashing factor identified in the previous section. Moreover, we describe the extent to which we can expect the Q (or Q_{\perp}) profile to predict where flare ribbons might be observed. We consider resistive MHD simulations similar to those of Galsgaard and Pontin (2011). Specifically, at $t = 0$ in our simulations we have a linear magnetic null point of the form

$$\mathbf{B} = B_0[y(2k - 1) \cos \phi \sin \phi + x(k \cos^2 \phi + (1 - k) \sin^2 \phi), y((1 - k) \cos^2 \phi + k \sin^2 \phi) + x(2k - 1) \cos \phi \sin \phi, -z], \tag{9}$$

which reduces to Equation (2) for $\phi = 0$. For $\phi \neq 0$, the fan plane eigenvectors are rotated by an angle ϕ with respect to the coordinate axes. The simulation domain is $x, y \in [-3, 3]$, $z \in [-0.5, 0.5]$, and we set $B_0 = 1$. We apply a driving velocity on the domain boundaries that advects the spine footpoints in opposite directions on opposite z -boundaries, in the y direction. Specifically, we let

$$\begin{aligned} \mathbf{v}(z = \pm 0.5) = & \pm \mathbf{e}_y v_0 \tanh\left(\frac{t}{T}\right) \left(\tanh\left(\frac{x - x_0}{x_h}\right) - \tanh\left(\frac{x + x_0}{x_h}\right) \right) \\ & \times \left(\tanh\left(\frac{y - y_0}{y_h}\right) - \tanh\left(\frac{y + y_0}{y_h}\right) \right), \end{aligned} \quad (10)$$

with $v_0 = 0.02$, $T = 0.1$, $x_0 = 0.3$, $y_0 = 0.6$, and $x_h = y_h = 0.2$. Outside these regions, $\mathbf{v} = \mathbf{0}$ on all boundaries. The magnetic field \mathbf{B} is line-tied at the boundaries and is evolved using the ideal induction equation (meaning that the normal component is fixed outside the driving regions). The density and pressure at the boundaries are evolved according to the continuity and energy equations, respectively. A Newton-like cooling strategy is employed in a narrow layer (a few grid points) from the boundary (with an exponentially increasing timescale with distance from the boundary surface) to prevent runaway values of the plasma parameters in the presence of strong compression or decompression. The plasma density and pressure are initially uniform, $\rho_0 = 1$, $p_0 = 0.0333$, so that the driving velocity is highly sub-sonic and sub-Alfvénic. In addition, the resistivity has the value $\eta = 2 \times 10^{-3}$ and is assumed to be spatially uniform throughout.

As the simulation proceeds, the stress injected by the boundary driving focusses around the null point, which collapses as a current sheet forms around it (see Pontin, Bhattacharjee, and Galsgaard, 2007). We examine three different simulations. In the first the null point is rotationally symmetric, while in the second and third we take an asymmetric null with $k = 0.35$ corresponding to frame (c) in Figures 3 and 5. Specifically, we use parameters in Equation (9) as follows: simulation 1: $k = 0.5$, $\phi = 0$; simulation 2: $k = 0.35$, $\phi = 0$; simulation 3: $k = 0.35$, $\phi = \pi/4$. Hereafter we analyse the state reached in the simulations at time $t = 3$, which constitutes a representative time by which the current layer has formed and reconnection is underway. The current layer formed at $t = 3$ is shown for each simulation in Figure 6. In each case the current is strongest at the null point. We note that the current layer extends from the high- β region into the low- β region in all simulations. In cases (a) and (b) the current extends perpendicular to the direction of the driving motion, which is also the weak-field direction for case (b), while in case (c) the driving and weak-field directions compete in determining the current layer geometry. However, for this moderate value of $k = 0.35$ the extension is not very pronounced. It is already known that when the null point is asymmetric, the current tends to spread preferentially along the weak-field direction in the fan plane, at least when the driving has a non-zero component perpendicular to this direction (Al-Hachami and Pontin, 2010; Galsgaard and Pontin, 2011), since the weak field in this region is less able to withstand the field collapse. We note that the current layer dimensions are insensitive to the dimensions of the boundary-driving regions (x_0, y_0) since only field lines in the close vicinity of the spine line at the boundary pass close to the null. We also note that currents are in general expected to extend along this weak-field direction also as a result of the strong Q values farther from the separatrix there, which reflect the variety of field line connectivities present nearby. Such field lines are anchored in distant locations at the boundary, therefore they typically experience different magnetic stress from the boundary motions and hence a different perturbed \mathbf{B} . However, at $t = 3$ in our simulations there has not been time for any communication with the x and y boundaries, therefore the current

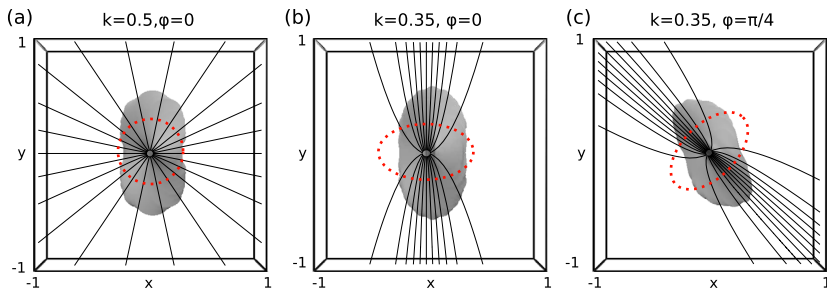


Figure 6 Current density isosurface at level $|J| = 2.5$ at $t = 3.0$ from the MHD simulations (Section 4). The view is down onto the fan surface; overlaid are fan field lines. The dashed red curve indicates the dimensions of the $\beta = 1$ curve in the $z = 0$ plane.

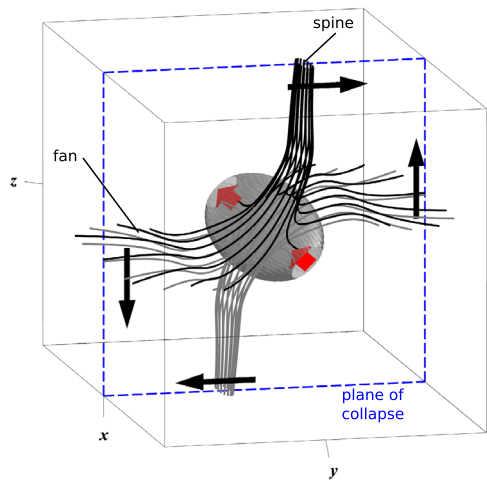
accumulation is only associated with stresses that are applied from the spine boundaries and the local collapse dynamics.

4.2. Predicting Flare Ribbon Locations

A proper diagnosis of the expected flare ribbon locations would require self-consistent modelling of particle acceleration in a null-point current sheet. This is yet to be done; most existing studies use simplified analytical models that do not properly represent the structure of the magnetic field and current layer. We emphasise that the following analysis based on the MHD approximation is a crude first step toward predicting the expected location of energetic particles.

First, we need to understand the mechanisms by which the acceleration could occur. Null points have been proposed as efficient particle acceleration sites first because the geometry of the field around the null naturally allows for magnetic mirroring and particle acceleration by $\text{grad-}\mathbf{B}$ and curvature drifts (Vekstein and Browning, 1997; Petkaki and MacKinnon, 2007; Guo *et al.*, 2010; Stanier, Browning, and Dalla, 2012). The particle dynamics in the vicinity of the null may indeed be inherently chaotic (Martin, 1986). In addition, when a current layer is present at the null during reconnection, there can be direct acceleration by the associated electric field. This was observed to be the dominant acceleration mechanism in the PIC simulations of Baumann, Haugbølle, and Nordlund (2013), who studied null-point reconnection in the corona using a configuration similar to that of Masson *et al.* (2009). To understand the resulting particle deposition patterns, we must first understand the structure of the electric current layer at the null. This electric current distribution is determined in general by a combination of factors. During “spine-fan reconnection”, the spine and fan of the null point locally collapse towards one another (see Figure 7) as in our simulations. This collapse of the null occurs in general when a shear perturbation is applied to either the spine or the fan (Pontin, Bhattacharjee, and Galsgaard, 2007). The plane in which this collapse occurs (the plane that contains the deformed spine line, see Figure 7) is determined both by the perturbation that drives the collapse and by the null-point structure. The associated current sheet that forms has a current vector that at the null is oriented perpendicular to the plane of collapse, see Figure 7. Thus (in resistive MHD) the parallel electric field is oriented along the fan surface, perpendicular to the spine and the plane of the null-point collapse (Pontin, Bhattacharjee, and Galsgaard, 2007). Hence, we expect a strong acceleration layer near the null in the fan plane, and thus particle deposition in the vicinity of the fan surface footprint (with oppositely charged particles deposited on opposite sides). It is also possible

Figure 7 Schematic of the structure around a null point at which spine-fan reconnection is taking place. Grey and black lines are magnetic field lines that show the local field collapse. Black arrows indicate the plasma flow. The shaded grey surface outlines the current layer locally along the fan (as in Figure 6), while the red arrows within it indicate the dominant current vector orientation. Modified from Pontin (2011).



that particles accelerated towards the null in this layer may follow the field lines out along the spines. However, when they reach the vicinity of the null point, they become effectively de-magnetised, and most particles are simply accelerated across the current layer and out along the fan (instead of being deflected up the spine). Exactly this effect was observed by Baumann, Haugbølle, and Nordlund (2013), who noted that very few particles were accelerated out along the spines.

We should note that there are at least three factors that could cause enhanced acceleration along the spine structures as well, to create the spine footpoint ribbons observed by Masson *et al.* (2009) and others. First, for solar parameters the reconnection process around the site of the original null is likely to be significantly more complex than in the simple models where a single laminar current layer is present. This current sheet is susceptible to a tearing-type instability that leads to a fragmented current layer containing many nulls, as described by Wyper and Pontin (2014). In such a configuration, the vicinity of the original null becomes highly turbulent, and we would expect efficient particle scattering along both the large-scale spine and the fan directions. Second, if there is some large-scale rotational external motion, this can drive torsional spine reconnection, associated with a component of current parallel to the spine (Pontin and Galsgaard, 2007) that can accelerate particles along the spine (Hosseinpour, Mehdizade, and Mohammadi, 2014). Finally, we would expect strong mirroring of particles close to the fan footpoints to lead to a distribution of particles also around the spine footpoints (note that the PIC simulations of Baumann, Haugbølle, and Nordlund (2013) did not cover the domain all the way to the photosphere).

Based on these considerations, no unequivocal general way of diagnosing expected particle deposition footprints exists. However, independent of the details of the acceleration mechanism, if the acceleration occurs during reconnection at the null point, then as particles move away from the null, they will become magnetised and would be expected to be observed in the vicinity of either the spine or fan footpoints. For our simulations we make the following basic assumption: particles will be accelerated in some manner in the vicinity of the current sheet around the null. Thus, we estimate expected deposition patterns by tracing field lines from the current sheet to find their intersections with the boundaries. To predict particle deposition locations on the spine boundaries ($z = \pm 0.5$), we therefore perform the following procedure: we select an array of points that lie on a given current contour level within the domain and trace field lines from each of these points to the spine boundaries. We

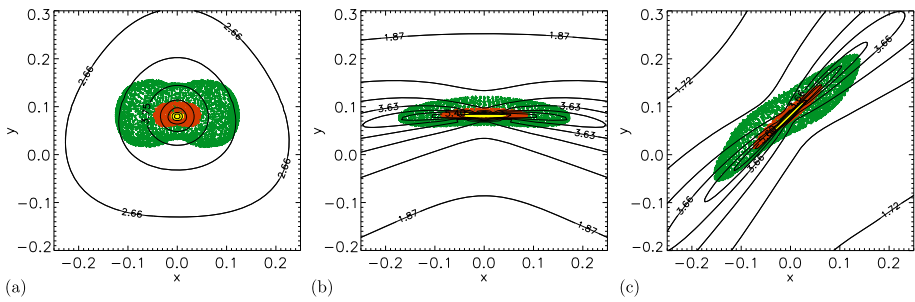


Figure 8 Coloured crosses show the intersection points with the $z = 0.5$ plane of field lines that are traced from initial points lying on a 3D contour of $|\mathbf{J}|$ at $t = 3.0$. Selected contours are at 25 %, 50 %, and 75 % of the domain maximum (green, red, and yellow crosses, respectively) – for (a) $k = 0.5$, $\phi = 0$, (b) $k = 0.35$, $\phi = 0$, (c) $k = 0.35$, $\phi = \pi/4$. Black contours denote $\log_{10} Q_{\perp}$ as calculated between this plane and a circular cylinder of radius 2.8.

then compare the intersections of these field lines with the Q_{\perp} distribution on the boundary to determine whether they match, *i.e.* whether the Q_{\perp} distribution can be expected to give a good prediction of the geometry of particle deposition signatures.

We first evaluate Q_{\perp} in our simulations using as launch boundary the plane $z = 0.5$ and as target boundary a circular cylinder of radius 2.8, as in Section 3.3. These contours are plotted, together with footpoint locations for field lines threading the current layer, in Figure 8. We first consider simulation 1, where the field is initially rotationally symmetric (Figures 8a and 6a). Some x - y asymmetry in the 3D current distribution is visible (Figure 6a) that is due to the orientation of the boundary driver. Here the null-point field was initially rotationally symmetric, and when we map field lines from the current layer to the boundary, we see a similar degree of asymmetry in the 3D current layer and its 2D projection on the boundary (Figure 8a). In contrast, we now compare Figures 6b and 8b. There is little difference in the asymmetry of the 3D current density distribution compared with Figure 6a. However, the field geometry means that field lines approach the spine more slowly along the weak-field direction, so that the projection of $|\mathbf{J}|$ is elongated along this direction. This reinforces the fact that the current preferentially spreads along that direction, but it is the 3D field line geometry and not the current layer geometry that has the main effect on the projected $|\mathbf{J}|$ map. This projection of $|\mathbf{J}|$ along the field lines now has a comparable geometry to the Q_{\perp} contours, although the projected $|\mathbf{J}|$ map does not exhibit such a high eccentricity or asymmetry. We observe a similar behaviour when we examine Figure 8c, except that in this case (where the boundary driving is at a finite angle to the null-point eigenvectors) the two distributions appear to be rotated with respect to one another, with the rotation being more pronounced for low current contour levels. These results indicate that a complicated combination of the driving geometry, the field geometry, and the current intensity in the current sheet (itself dependent on plasma parameters and the driving of the system) will influence the expected particle precipitation locations (even using this simple estimate for these locations).

Now we consider the boundaries intersected by fan field lines. The same method as applied before using field line mapping is not useful in determining the angular distribution of expected particle locations, since by definition every field line of the fan connects back to the null and therefore the maximum current region. What is more important for this angular distribution is the orientation of the electric field in the acceleration region together with the global field structure. We consider the following. Particle acceleration along fan field lines

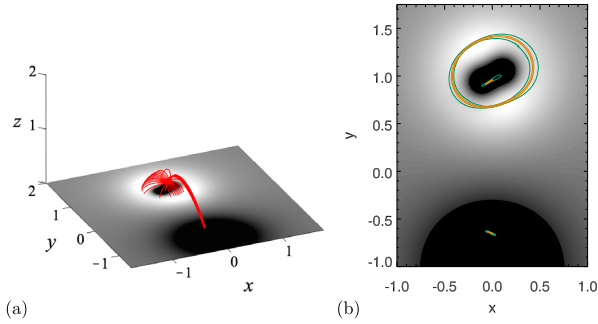


Figure 9 (a) Magnetic field lines (red) outlining the spine and fan structure of the coronal null point in the model field of Equation (11) with $S = 0.109$ (corresponding to $k = 0.35$). The shading on $z = 0$ shows B_z , saturated to values -1 (black) and $+1$ (white). (b) The B_z distribution on $z = 0$ together with contours of the Q_{\perp} distribution at levels $\log_{10} Q_{\perp} = \{1.5, 4\}$, coloured green and orange, respectively.

will occur through direct acceleration by the DC electric field (or other mechanisms, as mentioned above). It is expected that at the null this electric field is directed predominantly towards the weak-field direction (perpendicular to the plane of null collapse, see above). However, the field lines diverge away from this direction and converge towards the strong-field region. Thus the particles, which become re-magnetised as they are accelerated away from the null, are naturally channelled along the field lines into the neighbourhood of the strong-field direction. In this region Q (or Q_{\perp}) falls off more quickly away from the separatrix, and we therefore expect that particles accumulate around the strong-field regions of the fan footprint, corresponding to the locations where the Q contours are narrowest about the fan.

5. Effect of the Global Field

The above sections showed that the asymmetry of the field in the local vicinity of the null can have a profound effect on Q and on the mapping of field lines from the current layer. However, other features of the global field can clearly distort this picture. In this section we return to an equilibrium field and examine the effect of the global coronal geometry to determine whether the above results regarding the Q_{\perp} -distribution asymmetry hold beyond the linear null-point field. We consider a null point in a separatrix dome configuration, as shown in Figure 9a. The magnetic field is potential and on the photosphere corresponds to a magnetic dipole, one polarity of which contains an embedded parasitic polarity. This field is constructed by placing four magnetic point charges at locations outside our domain of interest. Specifically, we restrict our studies to the half-space $z > 0$, where $z = 0$ represents the photosphere, and we place all point charges in $z < 0$. The magnetic field is given by

$$B = \sum_{i=1}^4 \epsilon_i \frac{\mathbf{x} - \mathbf{x}_i}{|\mathbf{x} - \mathbf{x}_i|^3}, \tag{11}$$

where \mathbf{x}_i are the locations and ϵ_i are the strengths of the point charges. Here we take $\{\epsilon_1, \epsilon_2, \epsilon_3, \epsilon_4\} = \{1, -1, -0.2, -0.2\}$ and $\mathbf{x}_1 = (0, 1, -0.5)$, $\mathbf{x}_2 = (0, -1, -0.5)$, $\mathbf{x}_3 = (S, 1 + S/2, -0.2)$, $\mathbf{x}_4 = (-S, 1 - S/2, -0.2)$. The charges located at \mathbf{x}_3 and \mathbf{x}_4 are associated with the parasitic polarity around $(x, y) = (0, 1)$. The parameter S controls the

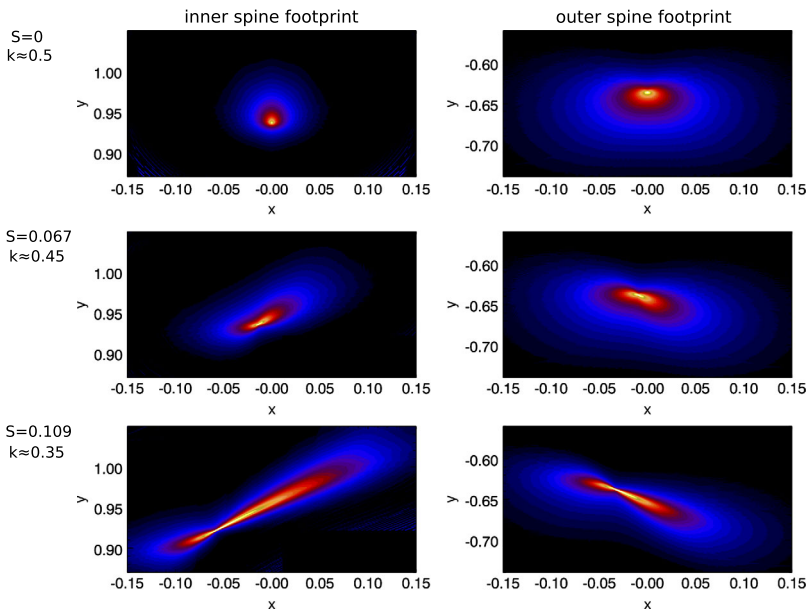


Figure 10 Distribution of Q_{\perp} around the inner (left) and outer (right) spine footprints for the magnetic field of Equation (11) with $S = 0$ (top), $S = 0.067$ (middle), and $S = 0.109$ (bottom).

separation of these two charges. When $S = 0$, they are coincident, and the parasitic polarity is approximately circular. However, as S is increased, the parasitic polarity becomes increasingly stretched (see Figure 9). This elongation of the parasitic polarity means that the field strength becomes less homogeneous in the vicinity of the fan footprint and also that the field asymmetry at the null, as measured by the fan plane eigenvalues, increases. Here we analyse the magnetic topology for three different values of S , namely $S = 0$, which leads to an approximately symmetric field in the local vicinity of the null that corresponds closely to the symmetric case $k = 0.5$ for the linear field, $S = 0.067$, which gives fan eigenvalues that correspond to $k = 0.45$ for the linear null, and $S = 0.109$, which corresponds to $k = 0.35$.

As shown in Figure 9b, when the null point is asymmetric the level curves of Q_{\perp} on the photosphere form extended structures. As S is increased, so too the asymmetry of these level curves increases, both around the inner and outer spine footprints; see Figure 10. To determine whether the same scaling with the null asymmetry as above is observed, we measure the aspect ratio of these ribbons, defined as follows. The length of a given Q_{\perp} contour is defined as the maximum extent along any line passing through the spine line footprint (location at which $Q_{\perp} \rightarrow \infty$). The width is then defined as the maximum extent of the contour along any line perpendicular to this, analogous to Section 3.3. The aspect ratio, which is the ratio of the length over the width, is calculated for different Q_{\perp} contours for each value of S , and the results are plotted in Figure 4. There are clear differences in the values of the calculated aspect ratio, both between the inner and outer spine footprints and with the results for the linear field (crosses, squares, and circles in Figure 4, respectively). However, as shown in Equation (8), the exact value of the aspect ratio depends on the locations of the launch and target footpoints (for the linear null a and b), therefore we would not expect an exact agreement. Moreover, we note that the overall scaling of the aspect ratio with the Q_{\perp} level is rather well reproduced between the linear field and coronal null-point field, and that for the higher Q_{\perp} contour levels considered the aspect ratios agree well.

6. Discussion and Conclusions

Coronal magnetic null points exist in abundance, as demonstrated by extrapolations of the coronal field, and they have been inferred to be important for a broad range of energetic events. These null points and their associated separatrix and spine field lines are preferential locations for reconnection because of to the discontinuity of the field line mapping. This field line mapping also exhibits strong gradients adjacent to the separatrix and spine field lines, which we have analysed here using the squashing factor Q (and Q_{\perp}). Understanding the distribution of Q in the presence of separatrices is of timely importance because Q maps are increasingly often used to analyse the coronal field topology. While a map of the Q distribution shows both true separatrices and finite- Q QSLs, we note that the physics of current layer formation and energy storage is critically different between a high- Q region containing a separatrix and one that does not. In particular, current singularities are known to form in the ideal limit in the presence of separatrices (Pontin and Craig, 2005). Thus reconnection onset is inevitable regardless of the dissipation (although it may be slow in an energy storage phase). By contrast, the current layers that form at QSLs are probably finite (Craig and Pontin, 2014; Effenberger and Craig, 2016), with the onset of reconnection at coronal parameters then requiring a thinning of the QSL and current layer during the energy storage phase (Aulanier, Pariat, and Démoulin, 2005; Démoulin, 2006). It is clear that in the case of both null points (separatrices) and QSLs, the current layer formation and eventual dynamics are crucially dependent on the driving of the system, for example from the photosphere.

We here analysed in detail the distribution of Q in the presence of magnetic nulls and their associated separatrices. The main results can be summarised as follows.

- i) It is generically the case that Q is not uniformly distributed around the spine and fan footpoints. Specifically, a generic null point is not rotationally symmetric, and while Q is infinite formally on both the spine and fan of the null, it decays most rapidly away from the spine or fan in the direction in which $|\mathbf{B}|$ increases most rapidly. When a linearisation of the null is performed (this linearisation characterises the local topology of the field for any topologically stable null (Hornig and Schindler, 1996)), this direction corresponds to the eigenvector of the largest fan eigenvalue.
- ii) The result of the above is that contours of Q are broadest along the direction of the eigenvector with the smallest fan eigenvalue, which we denoted here as the weak-field direction. In particular, this demonstrates that the extended elliptical-like high- Q halo around the spine footpoints observed by, *e.g.*, Masson *et al.* (2009) and Sun *et al.* (2013) is not a special feature of the particular observations, but is a generic feature when a coronal null is present whose fan eigenvalues are not equal (*i.e.* when the field strength is not homogeneous around the fan footprint).
- iii) The asymmetry of the halo of Q contours around the spine or fan increases as the null-point asymmetry (measured by the ratio of the eigenvalues) increases. Furthermore, for a given null-point asymmetry, the stretching of the Q contours is most extreme for the highest contour levels.
- iv) When the global field geometry (beyond the linear field region) is considered, the exact aspect ratios of the Q contours are modified from the simple linear null case, but the core of the distribution of Q still reflects the conditions around the null.
- v) As a first approximation for understanding why the geometry of flare ribbons is observed to agree well with the geometry of the Q halo in circular ribbon flares (*e.g.* Masson *et al.*, 2009), we analysed MHD simulations of null-point reconnection. We traced field lines through the current layer and analysed the relation between their intersections with the

boundary and the Q contours on the boundary. While no one-to-one relation was found, we showed that field lines traced from the core of the current layer match the highest Q contours very well. Particularly for the kernels of the flare ribbons, the Q distribution is therefore in general expected to predict the location and orientation of the ribbons well.

It is well established that an understanding of the null-point structure and its relation to the driving of the system is crucial for determining the current layer formation at the null and associated dynamics. We have shown here that this null-point structure, defined by its local eigenvectors and eigenvalues, is intrinsically linked to the distribution of Q away from the spine or fan. Furthermore, this extension of the Q halos around the spine or fan footpoints is in general important for diagnosing the regions of the photosphere that are magnetically connected to any current layer that forms at the null. If we hypothesise this current layer to be a primary site of particle acceleration, this provides predictive properties for *e.g.* flare ribbon formation. We conclude that the physics in the vicinity of the null and how this is related to the extension of Q away from the spine or fan can be used in tandem to understand observational signatures of reconnection at coronal null points.

Acknowledgements The authors acknowledge fruitful discussions with G. Valori, E. Pariat, P. Wyper, E. Priest, and M. Janvier. D.P. is grateful for financial support from the Leverhulme Trust and the UK's STFC (grant number ST/K000993). The work by K.G. was supported by a research grant (VKR023406) from VILLUM FONDEN.

Open Access This article is distributed under the terms of the Creative Commons Attribution 4.0 International License (<http://creativecommons.org/licenses/by/4.0/>), which permits unrestricted use, distribution, and reproduction in any medium, provided you give appropriate credit to the original author(s) and the source, provide a link to the Creative Commons license, and indicate if changes were made.

Appendix A: Calculation of Q and Q_{\perp} for the Linear Null

For the linear null-point magnetic field of Equation (2), the field line equations $d\mathbf{X}(s)/ds = \mathbf{B}(\mathbf{X}(s))$ may be solved to obtain parametric equations $\mathbf{X}(s)$ for the field lines,

$$X(s) = X_0 e^{ks}, \quad Y(s) = Y_0 e^{(1-k)s}, \quad Z(s) = Z_0 e^{-s}, \quad (12)$$

where $\mathbf{X}(s) = (X(s), Y(s), Z(s)) = (X_0, Y_0, Z_0)$ at $s = 0$. Now, set $s = 0$ on the plane $z = Z_0 = a$, intersecting the spine, so that $(X_0, Y_0, Z_0) = (x, y, a)$. Then we can eliminate s in the above equations to obtain

$$Y = y \left(\frac{x}{X} \right)^{(k-1)/k}, \quad Z = a \left(\frac{x}{X} \right)^{1/k}. \quad (13)$$

We now choose the target plane to be $(X, Y, Z) = (b, Y, Z)$, b constant. Finally, identifying $\{U, V, u, v\}$ in Equation (1) with $\{Y, Z, x, y\}$, the required derivatives may be obtained. A little algebra leads to the following expression for Q :

$$Q(x, y) = \left(\frac{y^2(k-1)^2}{k^2 x^2} \left(\frac{x}{b} \right)^{2-2/k} + \left(\frac{x}{b} \right)^{2-2/k} + \frac{a^2}{k^2 x^2} \left(\frac{x}{b} \right)^{2/k} \right) \frac{bk}{a}, \quad (14)$$

which reduces to Equation (3) for $y = 0$.

Evaluation of Q_{\perp} for the same planar boundaries as above requires that we calculate

$$Q_{\perp}^2 = \frac{\partial U^i}{\partial u^k} \left(\delta_{ij} - \frac{B_i^* B_j^*}{|\mathbf{B}^*|^2} \right) \frac{\partial U^j}{\partial u^l} \left(\delta^{lk} + \frac{B^l B^k}{B_n^2} \right) \frac{|\mathbf{B}^*|}{|\mathbf{B}|}, \quad (15)$$

where δ is the Kronecker delta, and summation over repeated indices is assumed (Titov, 2007). In addition, $\{U^1, U^2\} = \{Y, Z\}$, $\{u^1, u^2\} = \{x, y\}$, and B_1^*, B_2^* and $|\mathbf{B}^*|$ correspond to B_y, B_z , and $|\mathbf{B}|$ evaluated at the target boundary $X = b$. Also, B^1, B^2, B_n correspond to B_x, B_y, B_z evaluated at the launch plane $z = a$. The resulting expression is too lengthy to reproduce here, but reduces to Equation (5) for $y = 0$.

References

- Al-Hachami, A.K., Pontin, D.I.: 2010, Magnetic reconnection at 3D null points: effect of magnetic field asymmetry. *Astron. Astrophys.* **512**, A84. DOI.
- Antiochos, S.K.: 1996, Solar drivers of space weather. In: Balasubramaniam, K.S., Keil, S.L., Smartt, R.N. (eds.) *Solar Drivers of the Interplanetary and Terrestrial Disturbances*, *Astronomical Society of the Pacific Conference Series* **95**, 1.
- Aulanier, G., Parlat, E., Démoulin, P.: 2005, Current sheet formation in quasi-separatrix layers and hyperbolic flux tubes. *Astron. Astrophys.* **444**, 961. DOI.
- Aulanier, G., Parlat, E., Démoulin, P., Devore, C.R.: 2006, Slip-running reconnection in quasi-separatrix layers. *Solar Phys.* **238**, 347. DOI.
- Aulanier, G., Golub, L., DeLuca, E.E., Cirtain, J.W., Kano, R., Lundquist, L.L., Narukage, N., Sakao, T., Weber, M.A.: 2007, Slipping magnetic reconnection in coronal loops. *Science* **318**, 1588. DOI.
- Baumann, G., Haugbølle, T., Nordlund, Å.: 2013, Kinetic modeling of particle acceleration in a solar null-point reconnection region. *Astrophys. J.* **771**, 93. DOI.
- Craig, I.J.D., Pontin, D.I.: 2014, Current singularities in line-tied three-dimensional magnetic fields. *Astrophys. J.* **788**, 177. DOI.
- Dalmasse, K., Chandra, R., Schmieder, B., Aulanier, G.: 2015, Can we explain atypical solar flares? *Astron. Astrophys.* **574**, A37. DOI.
- Démoulin, P.: 2006, Extending the concept of separatrixes to QSLs for magnetic reconnection. *Adv. Space Res.* **37**, 1269. DOI.
- Démoulin, P., Hénoux, J.C., Mandrini, C.H.: 1994, Are null magnetic points important in solar flares? *Astron. Astrophys.* **285**, 1023.
- Démoulin, P., van Driel-Gesztelyi, L., Schmieder, B., Henoux, J.C., Csepura, G., Hagyard, M.J.: 1993, Evidence for magnetic reconnection in solar flares. *Astron. Astrophys.* **271**, 292.
- Démoulin, P., Bagala, L.G., Mandrini, C.H., Hénoux, J.C., Rovira, M.G.: 1997, Quasi-separatrix layers in solar flares. II. Observed magnetic configurations. *Astron. Astrophys.* **325**, 305.
- Dudík, J., Janvier, M., Aulanier, G., Del Zanna, G., Karlický, M., Mason, H.E., Schmieder, B.: 2014, Slipping magnetic reconnection during an X-class solar flare observed by SDO/AIA. *Astrophys. J.* **784**, 144. DOI.
- Edmondson, J.K., Antiochos, S.K., DeVore, C.R., Lynch, B.J., Zurbuchen, T.H.: 2010, Interchange reconnection and coronal hole dynamics. *Astrophys. J.* **714**, 517. DOI.
- Edwards, S.J., Parnell, C.E.: 2015, Null point distribution in global coronal potential field extrapolations. *Solar Phys.* **290**, 2055. DOI.
- Effenberger, F., Craig, I.J.D.: 2016, Simulations of 3D magnetic merging: resistive scalings for null point and QSL reconnection. *Solar Phys.* **291**, 143. DOI.
- Effenberger, F., Thust, K., Arnold, L., Grauer, R., Dreher, J.: 2011, Numerical simulation of current sheet formation in a quasiseparatrix layer using adaptive mesh refinement. *Phys. Plasmas* **18**(3), 032902. DOI.
- Fletcher, L., Metcalf, T.R., Alexander, D., Brown, D.S., Ryder, L.A.: 2001, Evidence for the flare trigger site and three-dimensional reconnection in multiwavelength observations of a solar flare. *Astrophys. J.* **554**, 451. DOI.
- Freed, M.S., Longcope, D.W., McKenzie, D.E.: 2015, Three-year global survey of coronal null points from Potential-Field-Source-Surface (PFSS) modeling and solar dynamics observatory (SDO) observations. *Solar Phys.* **290**, 467. DOI.
- Fuentes-Fernández, J., Parnell, C.E.: 2012, Magnetohydrodynamics dynamical relaxation of coronal magnetic fields. III. 3D spiral nulls. *Astron. Astrophys.* **544**, A77. DOI.

- Galsgaard, K., Pontin, D.I.: 2011, Current accumulation in an asymmetric 3D null point: dependence on the angle between the spine driver and the strongest Fan eigenvector. *Astron. Astrophys.* **534**, A2. DOI.
- Galsgaard, K., Titov, V.S., Neukirch, T.: 2003, Magnetic pinching of hyperbolic flux tubes. II. Dynamic numerical model. *Astrophys. J.* **595**, 506. DOI.
- Guo, J.N., Büchner, J., Otto, A., Santos, J., Marsch, E., Gan, W.Q.: 2010, Is the 3-D magnetic null point with a convective electric field an efficient particle accelerator? *Astron. Astrophys.* **513**, A73. DOI.
- Hornig, G., Schindler, K.: 1996, Magnetic topology and the problem of its invariant definition. *Phys. Plasmas* **3**, 781.
- Hosseinpour, M., Mehdizade, M., Mohammadi, M.A.: 2014, Comparison of test particle acceleration in torsional spine and Fan reconnection regimes. *Phys. Plasmas* **21**(10), 102904. DOI.
- Klapper, I., Rado, A., Tabor, M.: 1996, A Lagrangian study of dynamics and singularity formation at magnetic null points in ideal three-dimensional magnetohydrodynamics. *Phys. Plasmas* **3**(11), 4281.
- Lau, Y.-T., Finn, J.M.: 1990, Three dimensional kinematic reconnection in the presence of field nulls and closed field lines. *Astrophys. J.* **350**, 672.
- Li, T., Zhang, J.: 2014, Slipping magnetic reconnection triggering a solar eruption of a triangle-shaped flag flux rope. *Astrophys. J. Lett.* **791**, L13. DOI.
- Liu, C., Deng, N., Liu, R., Lee, J., Parlat, É., Wiegelmann, T., Liu, Y., Kleint, L., Wang, H.: 2015, A circular-ribbon solar flare following an asymmetric filament eruption. *Astrophys. J. Lett.* **812**, L19. DOI.
- Liu, W., Berger, T.E., Title, A.M., Tarbell, T.D., Low, B.C.: 2011, Chromospheric jet and growing “loop” observed by hinode: new evidence of Fan-spine magnetic topology resulting from flux emergence. *Astrophys. J.* **728**, 103. DOI.
- Luoni, M.L., Mandrini, C.H., Cristiani, G.D., Démoulin, P.: 2007, The magnetic field topology associated with two M flares. *Adv. Space Res.* **39**, 1382. DOI.
- Mandrini, C.H., Démoulin, P., Schmieder, B., Deluca, E.E., Parlat, E., Uddin, W.: 2006, Companion event and precursor of the X17 flare on 28 October 2003. *Solar Phys.* **238**, 293. DOI.
- Martin, R.F.J.: 1986, Chaotic particle dynamics near a two-dimensional magnetic neutral point with application to the geomagnetic tail. *J. Geophys. Res.* **91**, 11985.
- Masson, S., Parlat, E., Aulanier, G., Schrijver, C.J.: 2009, The nature of flare ribbons in coronal null-point topology. *Astrophys. J.* **700**, 559. DOI.
- Parlat, E., Démoulin, P.: 2012, Estimation of the squashing degree within a three-dimensional domain. *Astron. Astrophys.* **541**, A78. DOI.
- Parlat, E., Antiochos, S.K., DeVore, C.R.: 2009, A model for solar polar jets. *Astrophys. J.* **691**, 61. DOI.
- Parnell, C.E., Smith, J.M., Neukirch, T., Priest, E.R.: 1996, The structure of three-dimensional magnetic neutral points. *Phys. Plasmas* **3**(3), 759.
- Parnell, C.E., Neukirch, T., Smith, J.M., Priest, E.R.: 1997, Structure and collapse of three-dimensional magnetic neutral points. *Geophys. Astrophys. Fluid Dyn.* **84**, 245.
- Petkaki, P., MacKinnon, A.L.: 2007, Particle acceleration by fluctuating electric fields at a magnetic field null point. *Astron. Astrophys.* **472**(2), 623. DOI.
- Platten, S.J., Parnell, C.E., Haynes, A.L., Priest, E.R., Mackay, D.H.: 2014, The solar cycle variation of topological structures in the global solar corona. *Astron. Astrophys.* **565**, A44. DOI.
- Pontin, D.I.: 2011, Three-dimensional magnetic reconnection regimes: a review. *Adv. Space Res.* **47**, 1508. DOI.
- Pontin, D.I., Craig, I.J.D.: 2005, Current singularities at finitely compressible three-dimensional magnetic null points. *Phys. Plasmas* **12**, 072112. DOI.
- Pontin, D.I., Galsgaard, K.: 2007, Current amplification and magnetic reconnection at a 3D null point. Physical characteristics. *J. Geophys. Res.* **112**, A03103. DOI.
- Pontin, D.I., Bhattacharjee, A., Galsgaard, K.: 2007, Current sheet formation and non-ideal behaviour at three-dimensional magnetic null points. *Phys. Plasmas* **14**, 052106. DOI.
- Pontin, D.I., Hornig, G., Priest, E.R.: 2004, Kinematic reconnection at a magnetic null point: spine-aligned current. *Geophys. Astrophys. Fluid Dyn.* **98**, 407. DOI.
- Pontin, D.I., Hornig, G., Priest, E.R.: 2005, Kinematic reconnection at a magnetic null point: Fan-aligned current. *Geophys. Astrophys. Fluid Dyn.* **99**, 77. DOI.
- Pontin, D.I., Priest, E.R., Galsgaard, K.: 2013, On the nature of reconnection at a solar coronal null point above a separatrix dome. *Astrophys. J.* **774**, 154. DOI.
- Priest, E.R., Démoulin, P.: 1995, Three-dimensional magnetic reconnection without null points. 1. Basic theory of magnetic flipping. *J. Geophys. Res.* **100**, 23443.
- Priest, E.R., Hornig, G., Pontin, D.I.: 2003, On the nature of three-dimensional magnetic reconnection. *J. Geophys. Res.* **108**(A7), 1285. DOI.
- Régnier, S., Parnell, C.E., Haynes, A.L.: 2008, A new view of quiet-Sun topology from Hinode/SOT. *Astron. Astrophys.* **484**, L47. DOI.

- Savcheva, A., Pariat, E., McKillop, S., McCauley, P., Hanson, E., Su, Y., Werner, E., DeLuca, E.E.: 2015, The relation between solar eruption topologies and observed flare features. I. Flare ribbons. *Astrophys. J.* **810**, 96. [DOI](#).
- Savcheva, A., Pariat, E., McKillop, S., McCauley, P., Hanson, E., Su, Y., DeLuca, E.E.: 2016, The relation between solar eruption topologies and observed flare features. II. Dynamical evolution. *Astrophys. J.* **817**, 43. [DOI](#).
- Schindler, K., Hesse, M., Birn, J.: 1988, General magnetic reconnection, parallel electric fields, and helicity. *J. Geophys. Res.* **93**(A6), 5547.
- Stanier, A., Browning, P., Dalla, S.: 2012, Solar particle acceleration at reconnecting 3D null points. *Astron. Astrophys.* **542**, A47. [DOI](#).
- Sun, X., Hoeksema, J.T., Liu, Y., Aulanier, G., Su, Y., Hannah, I.G., Hock, R.A.: 2013, Hot spine loops and the nature of a late-phase solar flare. *Astrophys. J.* **778**, 139. [DOI](#).
- Titov, V.S.: 2007, Generalized squashing factors for covariant description of magnetic connectivity in the solar corona. *Astrophys. J.* **660**, 863. [DOI](#).
- Titov, V.S., Galsgaard, K., Neukirch, T.: 2003, Magnetic pinching of hyperbolic flux tubes. I. Basic estimations. *Astrophys. J.* **582**, 1172. [DOI](#).
- Titov, V.S., Hornig, G., Démoulin, P.: 2002, The theory of magnetic connectivity in the corona. *J. Geophys. Res.* **107**, 1164. [DOI](#).
- Vekstein, G.E., Browning, P.K.: 1997, Electric-drift generated trajectories and particle acceleration in collisionless magnetic reconnection. *Phys. Plasmas* **4**(6), 2261.
- Wang, H., Liu, C.: 2012, Circular ribbon flares and homologous jets. *Astrophys. J.* **760**, 101. [DOI](#).
- Wyper, P.F., Pontin, D.I.: 2014, Non-linear tearing of 3D null point current sheets. *Phys. Plasmas* **21**(8), 082114. [DOI](#).
- Yang, K., Guo, Y., Ding, M.D.: 2015, On the 2012 October 23 circular ribbon flare: emission features and magnetic topology. *Astrophys. J.* **806**, 171. [DOI](#).
- Zhang, Q.M., Chen, P.F., Guo, Y., Fang, C., Ding, M.D.: 2012, Two types of magnetic reconnection in coronal bright points and the corresponding magnetic configuration. *Astrophys. J.* **746**, 19. [DOI](#).