



University of Dundee

IFNs Modify the Proteome of Legionella-Containing Vacuoles and Restrict Infection Via IRG1-Derived Itaconic Acid

Naujoks, Jan; Tabeling, Christoph; Dill, Brian D.; Hoffmann, Christine; Brown, Andrew S.; Kunze, Mareike; Kempa, Stefan; Peter, Andrea; Mollenkopf, Hans Joachim; Dorhoi, Anca; Kershaw, Olivia; Gruber, Achim D.; Sander, Leif E.; Witzenrath, Martin; Herold, Susanne; Nerlich, Andreas; Hocke, Andreas C.; van Driel, Ian; Suttorp, Norbert; Bedoui, Sammy; Hilbi, Hubert; Trost, Matthias; Opitz, Bastian

Published in:
PLoS Pathogens

DOI:
[10.1371/journal.ppat.1005408](https://doi.org/10.1371/journal.ppat.1005408)

Publication date:
2016

Document Version
Publisher's PDF, also known as Version of record

[Link to publication in Discovery Research Portal](#)

Citation for published version (APA):

Naujoks, J., Tabeling, C., Dill, B. D., Hoffmann, C., Brown, A. S., Kunze, M., ... Opitz, B. (2016). IFNs Modify the Proteome of Legionella-Containing Vacuoles and Restrict Infection Via IRG1-Derived Itaconic Acid. *PLoS Pathogens*, 12(2), [e1005408]. DOI: 10.1371/journal.ppat.1005408









General rights

Copyright and moral rights for the publications made accessible in Discovery Research Portal are retained by the authors and/or other copyright owners and it is a condition of accessing publications that users recognise and abide by the legal requirements associated with these rights.


- Users may download and print one copy of any publication from Discovery Research Portal for the purpose of private study or research.
- You may not further distribute the material or use it for any profit-making activity or commercial gain.
- You may freely distribute the URL identifying the publication in the public portal.


RESEARCH ARTICLE

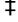
IFNs Modify the Proteome of *Legionella*-Containing Vacuoles and Restrict Infection Via IRG1-Derived Itaconic Acid

Jan Naujoks¹, Christoph Tabeling¹, Brian D. Dill², Christine Hoffmann³, Andrew S. Brown⁴, Mareike Kunze¹, Stefan Kempa⁵, Andrea Peter¹, Hans-Joachim Mollenkopf⁶, Anca Dorhoi⁶, Olivia Kershaw⁷, Achim D. Gruber⁷, Leif E. Sander¹, Martin Witzenrath¹, Susanne Herold⁸, Andreas Nerlich¹, Andreas C. Hocke¹, Ian van Driel⁴, Norbert Suttorp¹, Sammy Bedoui⁹, Hubert Hilbi^{3,10}, Matthias Trost², Bastian Opitz¹

1 Department of Internal Medicine/Infectious Diseases and Pulmonary Medicine, Charité University Medicine Berlin, Berlin, Germany, **2** MRC Protein Phosphorylation Unit, University of Dundee, Dundee, United Kingdom, **3** Max-von-Pettenkofer Institute, Ludwig Maximilian University, Munich, Germany, **4** The Department of Biochemistry and Molecular Biology, The University of Melbourne, Melbourne, Australia, **5** Integrative Metabolomics and Proteomics, Institute of Medical Systems Biology/Max-Delbrueck Center for Molecular Medicine, Berlin, Germany, **6** Max Planck Institute for Infection Biology, Berlin, Germany, **7** Department of Veterinary Pathology, Free University Berlin, Berlin, Germany, **8** Medizinische Klinik II, University Giessen and Marburg Lung Center, Justus-Liebig-University Giessen, Giessen, Germany, **9** The Department of Microbiology and Immunology, The University of Melbourne, Melbourne, Australia, **10** Institute of Medical Microbiology, University of Zurich, Zurich, Switzerland

 These authors contributed equally to this work.

 Current address: Proteomics Resource Center, The Rockefeller University, New York, New York, United States of America

 These authors also contributed equally to this work.

* bastian.opitz@charite.de



CrossMark
click for updates

 OPEN ACCESS

Citation: Naujoks J, Tabeling C, Dill BD, Hoffmann C, Brown AS, Kunze M, et al. (2016) IFNs Modify the Proteome of *Legionella*-Containing Vacuoles and Restrict Infection Via IRG1-Derived Itaconic Acid. *PLoS Pathog* 12(2): e1005408. doi:10.1371/journal.ppat.1005408

Editor: Dario S. Zamboni, University of São Paulo FMRP/USP, BRAZIL

Received: August 13, 2015

Accepted: December 30, 2015

Published: February 1, 2016

Copyright: © 2016 Naujoks et al. This is an open access article distributed under the terms of the [Creative Commons Attribution License](https://creativecommons.org/licenses/by/4.0/), which permits unrestricted use, distribution, and reproduction in any medium, provided the original author and source are credited.

Data Availability Statement: All relevant data are within the paper and its Supporting Information files. The submitted manuscript also includes microarray data which have been submitted to the GEO database (Accession Code: GSE60085).

Funding: This work was supported by the International Max Planck Research School for Infectious Diseases and Immunology (IMPRS-IDI; to JN), and the German Research Foundation (DFG; SPP1580/OP86/10-1 to BO, SFB/TR84 to BO, MW, ACH, ADG, LES, and SPP1580/HI1511/3-1 to HH). The funders had no role in study design, data

Abstract

Macrophages can be niches for bacterial pathogens or antibacterial effector cells depending on the pathogen and signals from the immune system. Here we show that type I and II IFNs are master regulators of gene expression during *Legionella pneumophila* infection, and activators of an alveolar macrophage-intrinsic immune response that restricts bacterial growth during pneumonia. Quantitative mass spectrometry revealed that both IFNs substantially modify *Legionella*-containing vacuoles, and comparative analyses reveal distinct subsets of transcriptionally and spatially IFN-regulated proteins. Immune-responsive gene (IRG)1 is induced by IFNs in mitochondria that closely associate with *Legionella*-containing vacuoles, and mediates production of itaconic acid. This metabolite is bactericidal against intravacuolar *L. pneumophila* as well as extracellular multidrug-resistant Gram-positive and -negative bacteria. Our study explores the overall role IFNs play in inducing substantial remodeling of bacterial vacuoles and in stimulating production of IRG1-derived itaconic acid which targets intravacuolar pathogens. IRG1 or its product itaconic acid might be therapeutically targetable to fight intracellular and drug-resistant bacteria.

collection and analysis, decision to publish, or preparation of the manuscript.

Competing Interests: The authors have declared that no competing interests exist.

Author Summary

Numerous intracellular bacterial pathogens replicate in specialized vacuoles within macrophages. We systematically study the molecular mechanism and the impact of macrophage-intrinsic antibacterial defense. Using *L. pneumophila*, an important cause of pneumonia and model organism for intracellular bacteria, we found that type I and II interferons critically modify the proteome of bacterial vacuoles to restrict infection. We identify IRG1 and demonstrate a bactericidal activity of its metabolite itaconic acid on bacteria in their vacuole. Moreover, our study provides evidence for the impact of this cell-autonomous defense pathway in alveolar macrophages to restrict lung infection. We speculate that vacuolar IRG1 or its product itaconic acid could serve as future therapeutic targets to fight intracellular and drug-resistant bacteria.

Introduction

Intracellular bacteria are major causes of morbidity and mortality. Upon infection, many intracellular pathogens establish intracellular membrane-bound compartments, where they resist lysosomal degradation and humoral immune responses [1]. As a result of co-evolution, host cells have in turn developed strategies to target the vacuoles or the bacteria inside in order to control infections [2,3]. Interferons (IFNs), which are classified into type I, II and III IFNs [4], are potent inducers of intracellular immunity in vertebrates [2]. They fulfill this function by activating transcription of partly overlapping sets of so-called IFN-stimulated genes (ISGs), several of which with antiviral or antibacterial activities. However, the exact functions of many ISGs remain unknown [2].

Legionella pneumophila is a frequent cause of severe pneumonia in humans and a model for investigating immune responses to intravacuolar bacteria. Upon infection, *L. pneumophila* is phagocytosed by alveolar macrophages, where *L. pneumophila* establishes a specialized replication vacuole, named the *Legionella*-containing vacuole (LCV). This process requires the Dot/Icm type IV secretion system (T4SS) which injects around 300 bacterial effector molecules into the host cytosol [5]. In replication-permissive cells, the LCV escapes fusion with lysosomes and instead recruits secretory vesicles from the endoplasmic reticulum (ER) as well as mitochondria [5–8].

In macrophages of C57BL/6 mice (and most other inbred strains), however, wild-type (wt) *L. pneumophila* is restricted by the NAIP5 inflammasome which detects bacterial flagellin and stimulates cell death as well as phagolysosomal maturation [9–13]. In contrast to wt bacteria, *L. pneumophila* lacking flagellin are not recognized by NAIP5 and are thus able to replicate in mouse macrophages. We and others recently demonstrated that *L. pneumophila* is additionally controlled by a cell-autonomous defense pathway that is activated by auto-/paracrine type I IFN signaling [14–19]. This defense pathway restricts the bacteria in their vacuole without preventing LCV formation or triggering lysosomal fusion [15].

In the present study, we systematically examined the antibacterial innate immune response to *L. pneumophila* infection and demonstrate that type I and II IFNs substantially alter the composition of bacterial vacuoles, induce production of bactericidal itaconic acid via IRG1, and restrict *L. pneumophila* replication in alveolar macrophages and lungs.

Results

IFNs are master regulators of gene expression upon *L. pneumophila* infection

In order to identify master regulators of the innate immune response to intracellular bacteria, we compared gene expression in the lungs of *L. pneumophila*-infected and sham-treated

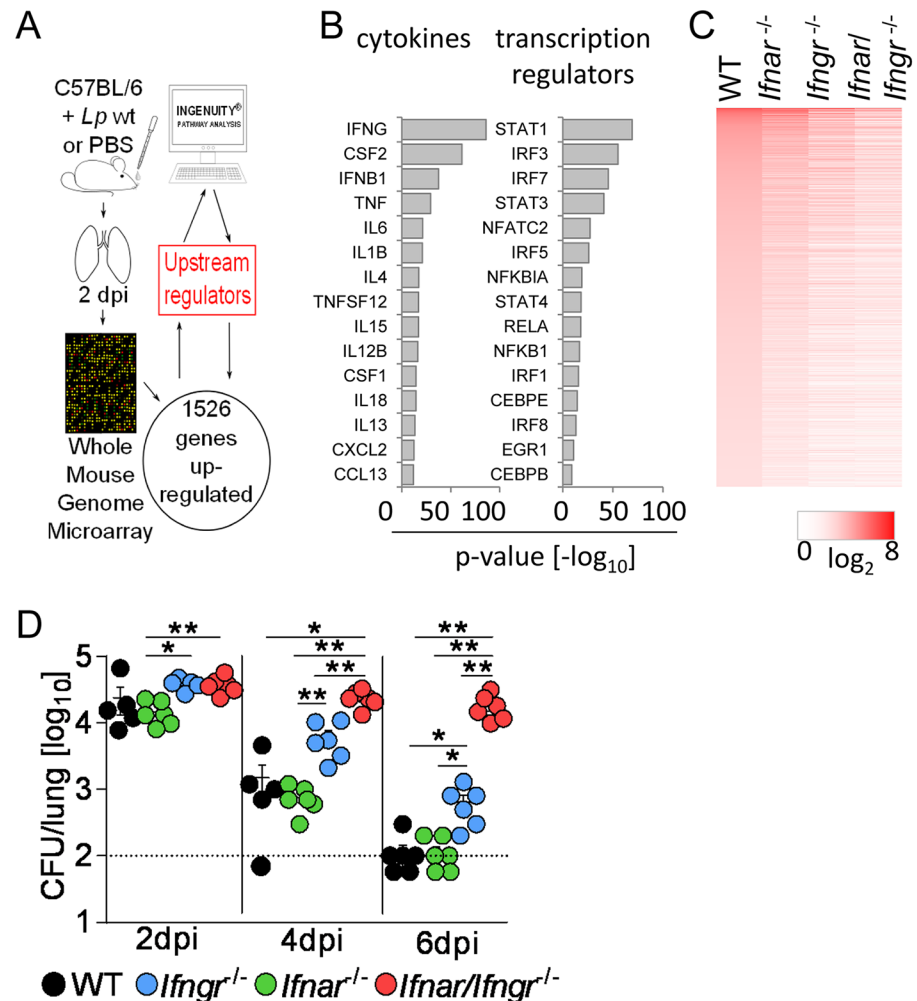


Fig 1. Type I and II IFNs are main regulators of gene expression during *L. pneumophila* infection. (A) Workflow for upstream regulator analysis. (B, C) WT (B) or WT, *Ifnar*^{-/-}, *Ifngr*^{-/-} and *Ifnar/Ifngr*^{-/-} mice (C) were infected with *L. pneumophila* or treated with PBS. Mice were sacrificed 2 d p.i., and microarray analysis performed from lung RNA. Up-regulated genes in *L. pneumophila*-infected WT mice compared to controls were analyzed for their predicted upstream regulators (B). Heat map of microarray analysis of infected versus PBS-treated mice for wild-type and respective knock-out strains (C). 5 mice per group, pooled for RNA extraction and subsequent analysis. (D) Bacterial loads in the lungs of *L. pneumophila* infected WT, *Ifnar*^{-/-}, *Ifngr*^{-/-} and *Ifnar/Ifngr*^{-/-} mice are depicted. Data represent mean + s.e.m. of 5–6 mice per group. Dotted line indicates lower detection limit, * p < 0.05, ** p < 0.01 (Kruskal-Wallis analysis of variance followed by Mann-Whitney U test with Bonferroni correction for multiple comparisons).

doi:10.1371/journal.ppat.1005408.g001

C57BL/6 WT mice. We identified 1526 genes (S1 Dataset) that were induced upon infection. Upstream regulator analysis was performed with Ingenuity Pathway Analysis (IPA) (Fig 1A) and revealed that type I and II IFNs and their related transcription factors (e.g. STAT1, IRF3, IRF7) play a predominant role in controlling gene transcription in response to *L. pneumophila* infection (Fig 1B). This *in silico* prediction was confirmed by transcriptome analysis of *L. pneumophila*-infected *Ifnar*^{-/-}, *Ifngr*^{-/-}, *Ifnar/Ifngr*^{-/-} mice, all of which showed a severely impaired transcriptional response compared to WT animals (Fig 1C, S1 Dataset).

To investigate the functional relevance of the type I and II IFNs for the antibacterial defense against *L. pneumophila*, we analyzed bacterial clearance following infection of WT, *Ifnar*^{-/-}, *Ifngr*^{-/-} and *Ifnar/Ifngr*^{-/-} mice. Whereas WT, *Ifnar*^{-/-} and *Ifngr*^{-/-} mice were able to clear or

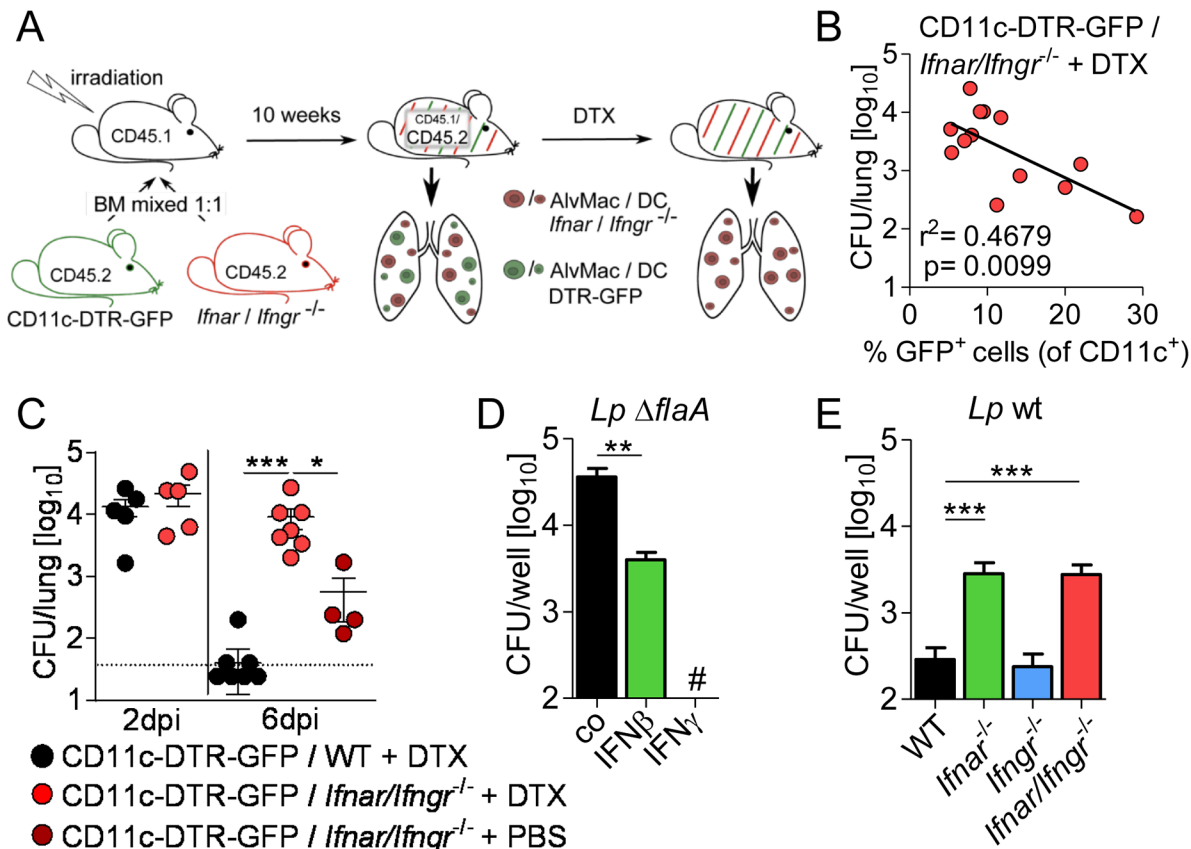


Fig 2. Type I and II IFNs restrict *L. pneumophila* infection through an alveolar macrophage-intrinsic mechanism. (A) Overview of generation of CD11c-DTR-GFP / *Ifnar*/*Ifngr*^{-/-} mixed bone marrow chimeric mice followed by DTX mediated depletion of CD11c-DTR-GFP⁺ cells. (B) Frequency of remaining CD11c⁺ GFP⁺ wild-type cells was correlated to bacterial load in the lungs of CD11c-DTR-GFP / *Ifnar*/*Ifngr*^{-/-} + DTX chimeras including all DTX-treated mice (13 mice) at 6 d p.i.. (C) Only mice with <10% GFP⁺ (of all CD11c⁺ cells) were considered for analysis and bacterial loads in the lungs of *L. pneumophila* infected mixed bone marrow-chimeric mice at indicated time points are shown. (D, E) Alveolar macrophages of WT, *Ifnar*^{-/-}, *Ifngr*^{-/-} and *Ifnar*/*Ifngr*^{-/-} mice were left untreated (E) or were treated with 50 U/ml IFNβ or IFNγ (D) 16–18 h prior to and during infection with *L. pneumophila* Δ*flaA* (D) or wt (E). Bacterial growth was determined by CFU counting after 72 h. Data represent 3 independent experiments done in triplicates. * p<0.05, ** p<0.01, *** p<0.001 (Pearson correlation (B), Kruskal-Wallis analysis of variance, Dunn's multiple comparison (C) or Mann-Whitney U test (D, E)). # No bacteria were detected.

doi:10.1371/journal.ppat.1005408.g002

strongly reduce bacterial burdens by day 6 post infection (p.i.), bacterial loads remained high in *Ifnar*/*Ifngr*^{-/-} mice (Fig 1D). This is in line with our previously published results from infections with *L. pneumophila* Δ*flaA* [15]. Together, these data indicate that type I and type II IFNs are critical regulators of early gene expression and the antibacterial innate immune response during *L. pneumophila* infection.

IFNs restrict *L. pneumophila* in vivo via a CD11c⁺ cell-intrinsic mechanism

Alveolar macrophages, but not dendritic cells (DCs), are the primary cell type supporting *L. pneumophila* infection in vivo [20–22]. Therefore, we questioned whether an IFN-mediated alveolar macrophage-intrinsic defense pathway is relevant during *L. pneumophila* infection in vivo. To this end, we constructed a chimeric mouse model in which IFN signaling was selectively abrogated in CD11c⁺ cells, whereas at least 50% of all other hematopoietic cell types express the IFN receptors (Fig 2A). In the lung >90% of CD11c⁺ cells are alveolar macrophages and only a minority of pulmonary CD11c⁺ cells in steady state are DCs. CD45.1⁺ mice were

irradiated and reconstituted with a 1:1 mixture of CD45.2⁺ bone-marrow cells from *Ifnar/Ifngr*^{-/-} or WT and CD11c-DTR-GFP mice (expressing the diphtheria toxin receptor (DTR) under the control of the CD11c promoter). Repopulation was assessed to be >90% after 10 weeks (S1A Fig) and mice were subsequently infected with *L. pneumophila* wt. First, we analyzed all *L. pneumophila*-infected mice repopulated with *Ifnar/Ifngr*^{-/-} and CD11c-DTR-GFP cells including those showing a weak depletion of CD11c⁺ GFP⁺ cells by diphtheria toxin (DTX) in the lung (S1B Fig). We observed a significant negative correlation between remaining CD11c⁺ GFP⁺ cells (expressing IFN receptors) and pulmonary bacterial load (Fig 2B). This correlation indicates that the number of IFN-responsive CD11c⁺ cells has a direct positive impact on bacterial clearance.

Second, we examined bacterial loads only in the bone-marrow-chimeric mice which showed a highly efficient DTX-mediated depletion of CD11c⁺ DTR-expressing GFP⁺ cells (with <10% remaining, S1 Fig). Strikingly, chimeric mice lacking the IFN receptors in CD11c⁺ cells (CD11c-DTR / *Ifnar/Ifngr*^{-/-} + DTX) were unable to clear *L. pneumophila* wt infection (Fig 2C), and were thus comparable to *Ifnar/Ifngr*^{-/-} mice (Fig 1D). In contrast, chimeric mice without depletion of IFNAR/IFNGR-expressing CD11c⁺ cells (CD11c-DTR / *Ifnar/Ifngr*^{-/-} + PBS) showed a significant reduction of bacterial burdens (Fig 2C). Chimeric mice reconstituted with solely IFN-responsive cells (CD11c-DTR / WT + DTX) finally were able to clear the infection almost completely. Given that DCs do not support *L. pneumophila* growth [20,21], our data strongly suggest that IFNs induce alveolar macrophage-intrinsic effects to restrict intracellular infection.

In line with this conclusion, *L. pneumophila* Δ *flaA*, which is able to replicate in WT alveolar macrophages due to evasion of the NAIP5 inflammasome [9–12], is partially inhibited by IFN β and completely blocked by IFN γ treatment (Fig 2D). Conversely, *Ifnar*^{-/-} and *Ifnar/Ifngr*^{-/-} alveolar macrophages supported replication of otherwise growth-restricted *L. pneumophila* wt (Fig 2E). These data indicate that endogenously produced type I IFNs control bacterial growth, whereas type II IFN is not relevant in this *ex vivo* model since alveolar macrophages produce no or only negligible levels of IFN γ [23]. Collectively, our data indicate that *L. pneumophila* lung infection is controlled by an IFN-dependent alveolar macrophage-intrinsic mechanism.

IFNs restrict *L. pneumophila* in a largely iNOS- and cell death-independent fashion

To determine the molecular basis of how macrophages restrict *L. pneumophila* upon activation by IFNs, we made use of bone marrow-derived macrophages (BMMs), an easily available and frequently used cell model to study *L. pneumophila* infection [9–12,14,15]. As shown in alveolar macrophages (Fig 2D), treatment of BMMs with IFN β or IFN γ restricted the growth of *L. pneumophila* Δ *flaA* (S2A and S2B Fig), which is in line with previous reports [14–16]. Importantly, treatment of BMMs with suboptimal doses of both cytokines alone or in combination resulted in comparable growth inhibition (S2C Fig) suggesting that type I and II IFNs might activate an identical intracellular restriction mechanism. Moreover, lack of responsiveness to endogenous IFN β in *Ifnar*^{-/-} BMMs resulted in replication of otherwise growth-restricted *L. pneumophila* wt, and further enhanced the growth of *L. pneumophila* Δ *flaA* (S2D Fig).

Type I IFNs have previously been reported to induce cell death via e.g. caspase-11-dependent pyroptosis or RIP3-dependent necroptosis [24,25]. In order to detect pyroptosis and necroptosis of infected BMMs, we measured cell viability by flow cytometry as a general read-out for both types of cell death. The use of GFP-expressing *Legionella* allowed us to exclusively consider bacteria-harboring cells (S3A Fig). As expected, infection with *L. pneumophila* wt enhanced cell death compared to *L. pneumophila* Δ *flaA* as a consequence of NAIP5/

NLRC4-dependent pyroptosis [10–12] (S3B, S3C and S3E Fig). However, cell death in *L. pneumophila* wt infected cells was not affected by the lack of IFNAR (S3B and S3C Fig), and was only marginally affected by IFNs upon *L. pneumophila* Δ *flaA* infection (S3B–S3D Fig). This indicates that IFNs can slightly enhance cell death in *L. pneumophila*-infected cells independently of the NAIP5 pathway. Moreover, cell death was completely independent of RIP3 (S3E Fig), and RIP3 as well as caspase-11 deficiency did not influence bacterial growth or its restriction by IFNs (S4A, S4B, S4D and S4E Fig). Another important restriction mechanism against intracellular bacteria is the production of nitric oxide (NO) via inducible NO synthase (iNOS) [26]. However, *L. pneumophila* wt and Δ *flaA* replication and IFN-mediated bacterial restriction were comparable in WT and iNOS-deficient macrophages (S4C and S4F Fig). Thus, neither cell death nor production of reactive nitrogen species by iNOS appear to be of critical importance for the IFN-mediated control of *L. pneumophila* infection.

Subcellular quantitative proteomics reveal that type I and II IFNs substantially modify vacuolar protein composition

IFNs induce the expression of hundreds of ISGs, several of which possess antimicrobial activities. Since some antimicrobial ISGs have been associated with microbial vacuoles [2], we hypothesized that IFNs target antibacterial effector proteins to the LCV to restrict infection. In order to test this hypothesis in an unbiased and systematic fashion, we examined the proteome of *Legionella*-containing vacuoles (LCVs) in resting and IFN-activated macrophages 2 h post infection. First, resting macrophages were infected, LCVs were purified as previously described [27], and LCVs were analyzed by quantitative mass spectrometry. We identified 2307 proteins from the host and 547 from the bacterium in 6 of 6 samples of LCVs from untreated cells (Fig 3A, S2 Dataset). In order to determine the cellular origin of the identified proteins, we performed gene ontology (GO) enrichment analysis of the identified host proteins for cellular components (CC). This analysis revealed the highest significance values for the GO terms ‘membrane-bounded organelle’ and ‘intracellular membrane-bounded organelle’ as predicted cellular source of the identified proteins (S2 Dataset). Highest significance values were found for ‘mitochondrion’, and ‘endoplasmic reticulum’ as predicted child terms of ‘intracellular membrane-bounded organelle’ (Fig 3B, S2 Dataset), reflecting both the ER-derived nature of the LCV as well as the previously reported close association of LCVs with mitochondria [5–8]. Additional GO enrichment analyses of biological processes (BP) indicated an enrichment of proteins involved in metabolic as well as transport and localization processes (S5 Fig, S2 Dataset).

Macrophage activation by type I or II IFNs did not change the abundance of LCV marker proteins like ARF1 and SEC22b, or ER marker proteins, nor did it lead to an enrichment of endosomal or lysosomal proteins (Table 1), indicating that neither the LCV establishment is inhibited by IFNs nor do they trigger endo-lysosomal fusion. However, IFN β or IFN γ treatment led to a significant (>2-fold) vacuolar enrichment of 260 or 321 proteins, respectively, and to a decreased vacuolar abundance of 60 or 67 proteins (Figs 3C, 3D, S6A–S6F, S6B, S6D, S6E and S3 Dataset). The direct comparison of LCV proteomes from IFN β - or IFN γ -activated cells revealed rather minor differences with only a few proteins being differentially regulated (Figs 3E, S6C and S6F). Although we cannot exclude the possibility that some of the ISG product found on the vacuole could potentially only be a contaminant due to the massive up-regulation of ISGs in the cell, the data clearly show that IFNs substantially modify the LCV proteome. Computational analysis of all IFN-directed proteins at the LCV using the STRING database of known and predicted protein-protein interactions (<http://string-db.org>) generated a dense network of protein interactions, with many proteins being involved in immune response processes

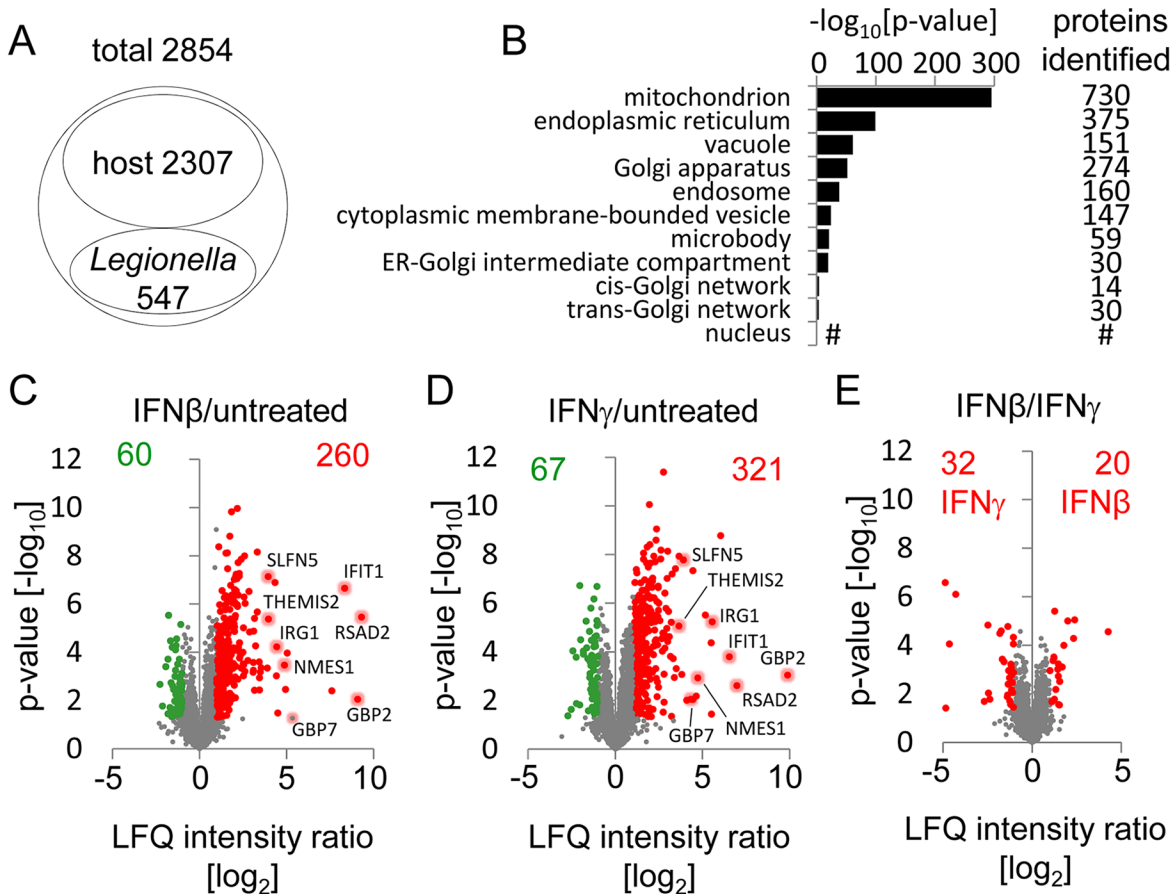


Fig 3. Type I and II IFNs alter the protein composition of LCVs. (A) Proteomic analysis of LCVs isolated 2 h p.i. from untreated BMMs infected with *L. pneumophila* Δ *flaA* detected 2854 proteins in all six replicates of which 2307 were identified as host- and 547 as *L. pneumophila*-derived. (B) GO enrichment analysis for overrepresented cellular components of the host proteins was done and overrepresented child terms of GO:0043231 'intracellular membrane-bounded organelle' were extracted. Depicted are p-values for the indicated GO terms as well as the number of identified proteins annotated with each term; # no p-value for GO term 'nucleus' was computed. (C-E) Quantitative proteomic analysis of LCVs isolated 2 h p.i. with *L. pneumophila* Δ *flaA* from BMMs left untreated or treated with 50 U/ml IFN β or IFN γ 16–18 h prior to and during infection. Volcano plots show unchanged proteins (grey) and proteins with a significant higher (red) or lower (green) abundance at LCVs from IFN β - (C) or IFN γ - (D) treated BMMs compared to untreated cells, and direct comparison of IFN β - versus IFN γ -treated samples (E). See also S6 Fig for detailed list of top 20 proteins for each condition. Proteomic analysis was done from 6 (untreated), 5 (IFN γ) and 4 (IFN β) individual LCV isolations.

doi:10.1371/journal.ppat.1005408.g003

(Fig 4). These proteins included molecules contributing to microbial nucleic acid detection (e.g. TMEM173, also known as STING), ubiquitylation/ISGylation (e.g. ISG15, TRIM25), antimicrobial defense (e.g. IRGM1, GBPs), and antigen processing/presentation. The comparison of the IFN-dependently LCV-enriched proteins with our transcriptome data (S1 Dataset) as well as the INTERFEROME database of ISGs [28] revealed distinct subsets of IFN-regulated proteins (Fig 4). Whereas several LCV-enriched proteins are also transcriptionally induced by IFNs and thus represent *bona fide* ISGs, others such as kinases Syk and Lyn or proteins of the proteasomal complex are not directly transcriptionally regulated but appear spatially affected by IFNs.

IRG1 is a major *L. pneumophila* restricting factor

In order to identify new IFN-regulated proteins possessing antibacterial activity against *L. pneumophila* we decided to examine proteins that were most strongly targeted to the LCV by

Table 1. Fold change in abundance of selected host proteins upon IFN-treatment identified by mass spectrometry on purified LCVs.

	IFN β /untreated	IFN γ /untreated
LCV marker		
ARF1	1,7	1,7
RAB1a	1,3	1,1
RAB1a	1,0	1,1
SEC22b	1,1	1,0
ER marker		
Calreticulin	1,0	1,1
Calnexin	1,2	1,2
endosome marker		
RAB5a	1,8	1,8
RAB5b	1,5	1,7
RAB5c	1,6	1,7
RAB7a	1,2	1,2
RAB7b	1,2	1,1
endosome/lysosome		
vATPase subunit A	1,0	1,1
vATPase subunit C1	0,9	1,0
vATPase subunit G1	1,0	1,2
lysosome marker		
LAMP1	0,7	0,7
Cathepsin B	0,4	0,4
Myeloperoxidase	0,6	0,7

doi:10.1371/journal.ppat.1005408.t001

both IFNs (Fig 3C and 3D) for their roles in restricting *L. pneumophila* growth. BMMs were first transfected with a pool of two siRNAs for each of our candidate molecules as well as IFNAR as a control, and efficient gene silencing was verified (Fig 5A). We found that silencing the expression of IRG1 enhanced replication of *L. pneumophila* to a similar extent as silencing of IFNAR, whereas knock-down of THEMIS2, GBP3, and GBP7 only slightly increased bacterial growth (Fig 5B). We thus decided to focus on IRG1.

Each IRG1-siRNA sequence was also effective in inhibiting their target gene expression (Fig 6A) and in increasing bacterial replication when used individually (Fig 6B). To demonstrate that the IRG1-mediated bacterial restriction is also relevant in primary alveolar macrophages we silenced IRG1 expression by siRNA (Fig 6C), which led to a significantly increased *L. pneumophila* growth in these cells compared to control cells (Fig 6D).

We found that IRG1 was strongly induced in BMMs by IFN β and IFN γ treatment (S7 Fig), confirming its status as a *bona fide* ISG. Moreover, IRG1 expression was induced upon *L. pneumophila* infection at both transcriptional and protein levels, which strongly relied on the endogenous type I IFN signaling (Fig 6E and 6F). Strikingly, overexpression of IRG1 in *Ifnar*^{-/-} cells restricted intravacuolar growth of *L. pneumophila*, while the percentage of infected cells was not influenced (Fig 6G–6I). Thus, IRG1 is regulated by IFNs, and restricts replication of *L. pneumophila* within the LCV.

IRG1 localizes to mitochondria, which closely associate with the LCV

In agreement with previous studies in RAW264.7 macrophages [29], IRG1 showed a mitochondrial localization (Fig 7A and 7B). Moreover, super-resolution fluorescence microscopy

Network of IFN-directed proteins at the *Legionella*-containing vacuole

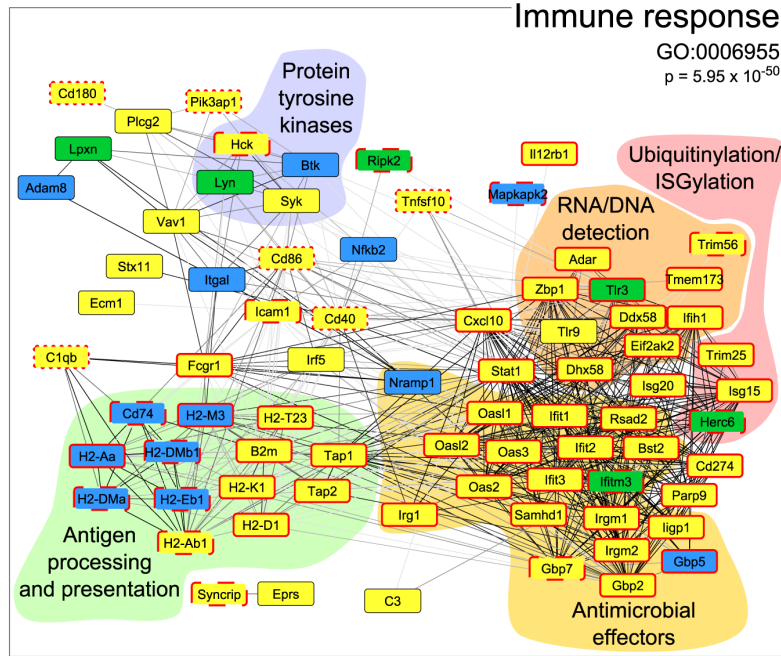
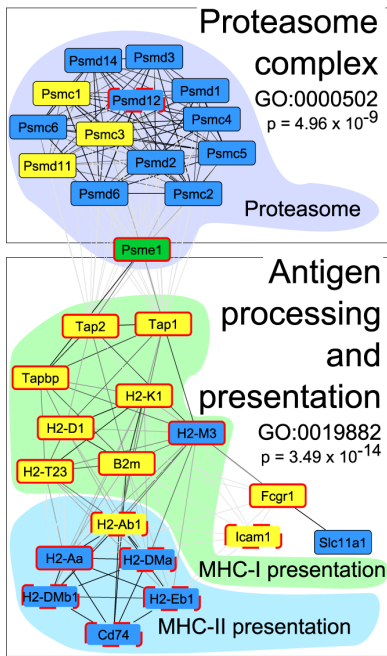
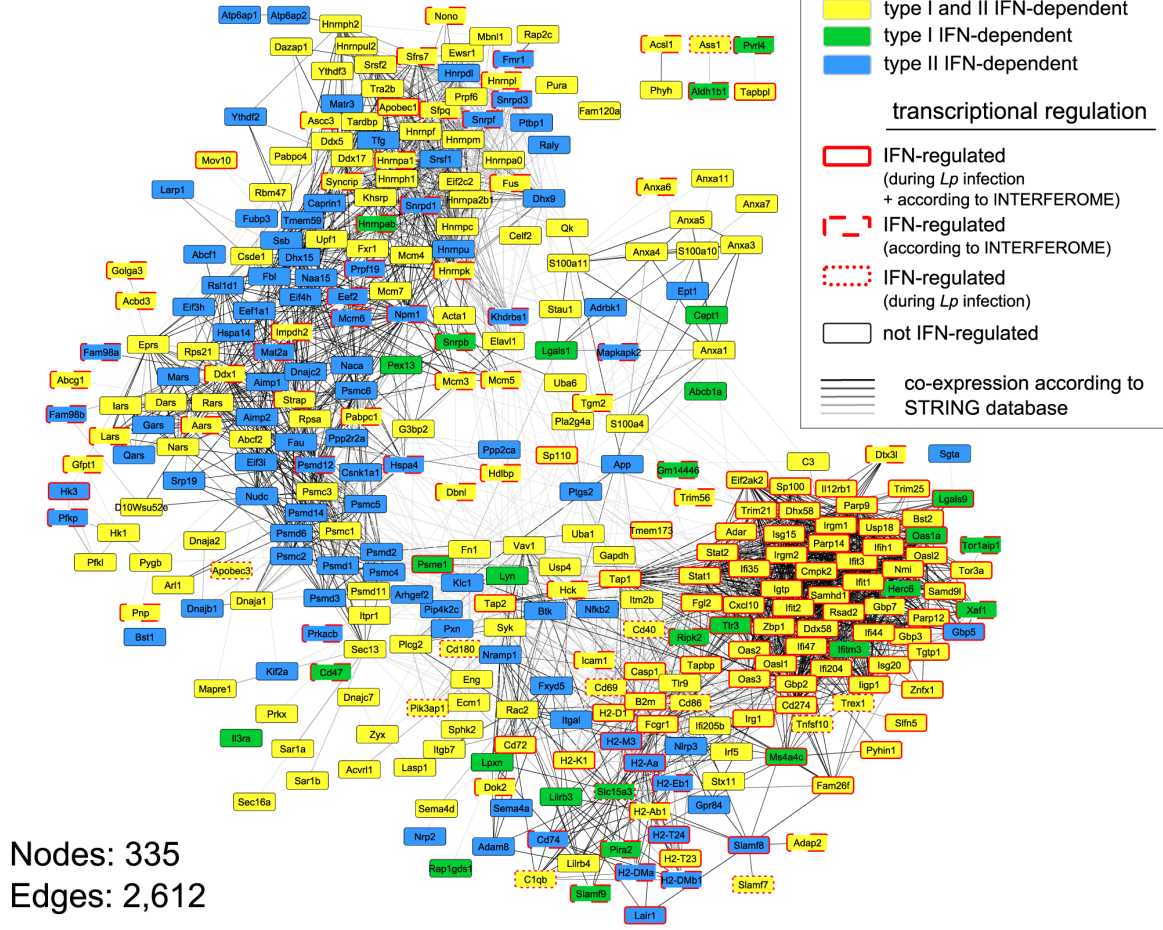


Fig 4. Integrated network analysis of IFN-regulated proteins of the LCVs. Proteins with higher abundance at LCVs from IFN β - and/or IFN γ -treated compared to untreated cells were analyzed with the STRING database. The proteome data were further compared with the whole genome microarray data (S1 Dataset; genes > 2-fold higher expressed and $p < 0.05$ in infected WT vs. *Ifnar1/Ifngr1*^{-/-} mice) and the INTERFEROME database to indicate molecules which are also transcriptionally regulated by IFNs. A GO enrichment analysis was performed for extracting significant subnetworks of a complex network composed of 335 nodes and 2,612 edges. Shown are subnetworks positively affected by IFN β and/or IFN γ activation such as ‘immune response’, ‘antigen processing and presentation’ and the ‘proteasome complex’.

doi:10.1371/journal.ppat.1005408.g004

demonstrated that mitochondria were distributed throughout the cell and closely associated with LCVs (Fig 7C). As viewed by time-lapse fluorescence microscopy, mitochondria moved very dynamically within living cells, although single mitochondria appeared to stay in close proximity to intracellular *L. pneumophila* for at least 1 h, most likely attached to the LCV membrane (S8 Fig and S1 Video). In order to directly evaluate whether the mitochondria-localized IRG1 associates with the LCV, we visualized homogenized *Legionella*-infected IRG1-GFP-overexpressing cells by fluorescence microscopy, and found that LCVs are surrounded by IRG1 (Fig 7D). In summary, these data confirm that overexpressed IRG1 localizes to mitochondria and that the latter are in close contact with LCVs. In absence of a specific antibody we could not obtain sufficient staining of endogenous IRG1. Nevertheless, our data strongly suggest that IFN signaling stimulates up-regulation of endogenous IRG1 within mitochondria, which results in its close association of IRG1 with LCV.

IRG1 mediates production of the metabolite itaconic acid, which is broadly bactericidal

IRG1 has recently been described as an enzyme catalyzing the production of itaconic acid, which was found to exert bacteriostatic effects on *Mycobacteria* and *Salmonella* in liquid cultures [30], but the mechanisms that regulate this pathway and its relevance for infections remained incompletely understood. Subsequently, another study found that IRG1 mediates production of mitochondrial ROS (mROS) [31]. We found that mROS is produced in *Legionella*-infected macrophages by a largely IRG1- and IFNAR-independent mechanism (S9A and S9B Fig). In contrast, metabolic analyses of BMMs via gas chromatography-mass spectrometry (GC-MS) revealed that IFNs as well as *L. pneumophila* stimulate the production of itaconic acid (Fig 8A and 8B), whereas gene-silencing of IRG1 strongly reduced its production (Fig 8C).

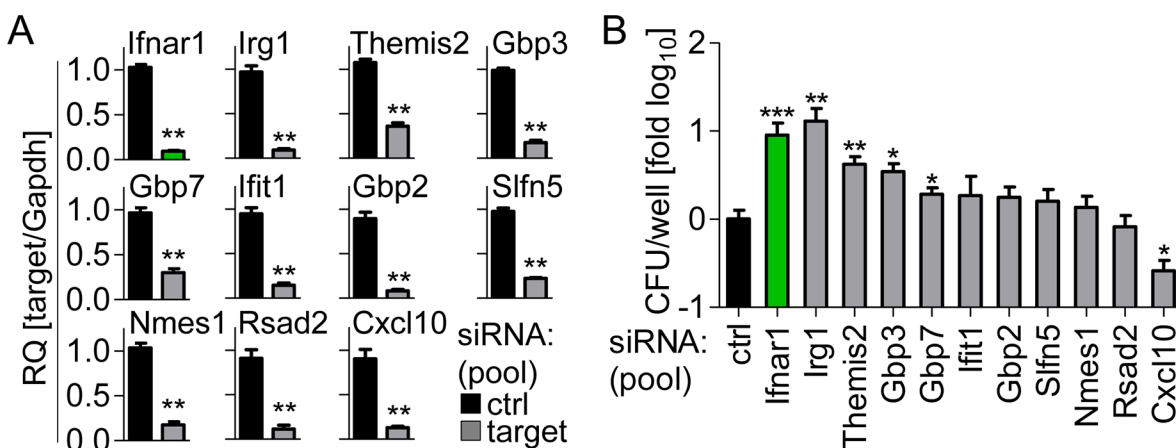


Fig 5. RNAi screen identifies IRG1 as crucial *L. pneumophila* restricting factor. (A, B) BMMs were transfected with control siRNA or a pool of two siRNAs per gene 24 h prior to infection and infected with *L. pneumophila*. Expression of targeted genes was assessed 24 h p.i. by qRT-PCR (A), and CFUs were counted 72 h p.i. (B). Data are mean + s.e.m. of 2 (A) or 4 (B) independent experiments done in triplicates. * $p < 0.05$, ** $p < 0.01$, *** $p < 0.001$, no indication if not significant (Mann-Whitney U test).

doi:10.1371/journal.ppat.1005408.g005

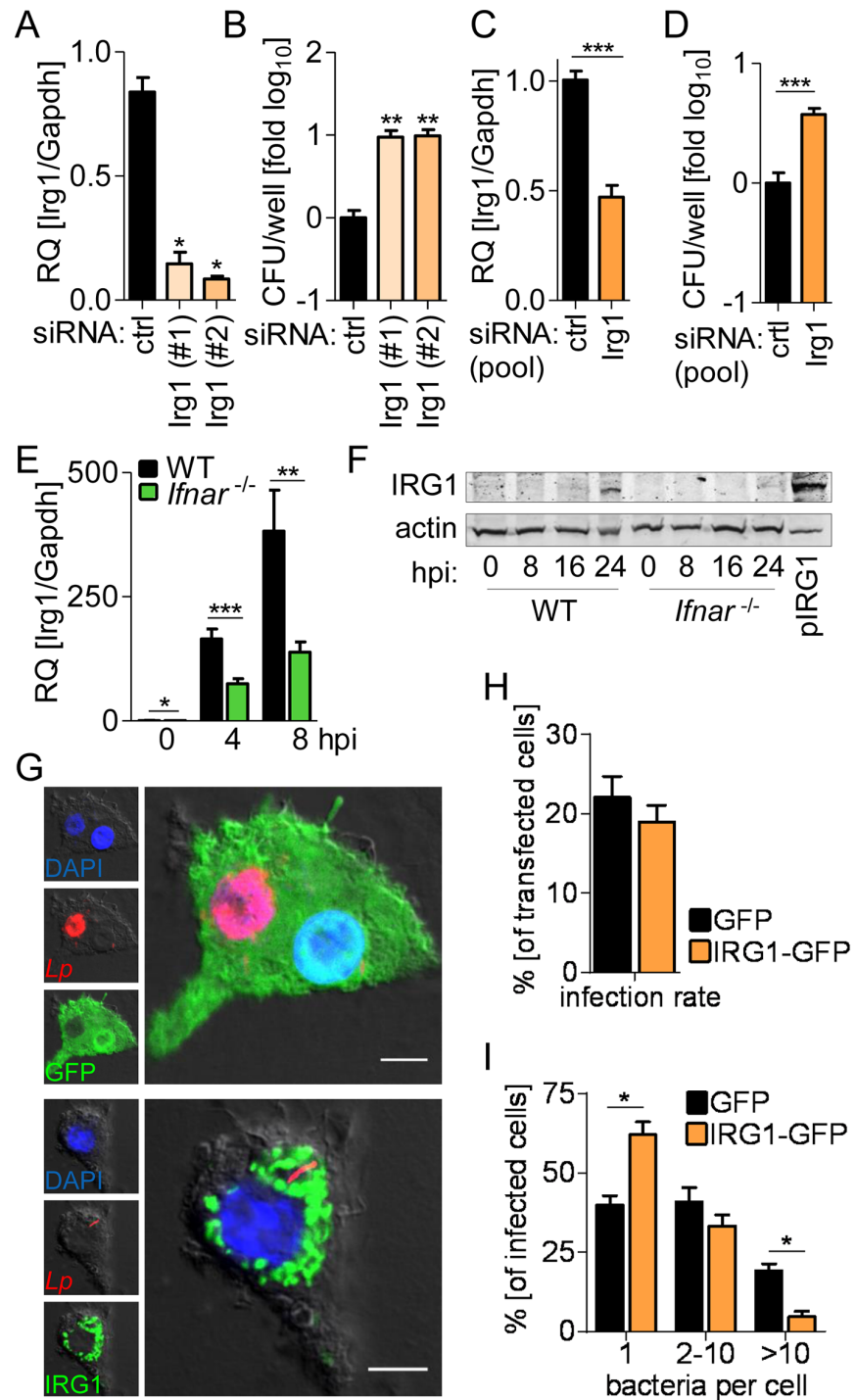


Fig 6. IRG1 is regulated by IFNs and restricts *L. pneumophila* within their vacuoles. (A-D) BMMs (A, B) or alveolar macrophages (C, D) were transfected with control or two IRG1 siRNAs separately (A, B) or pooled (C, D), infected with *L. pneumophila*, *Irg1* expression was assessed 24 h p.i. (A, C), and CFUs were counted 72 h p.i. (B, D). (E, F) *Irg1* gene and IRG1 protein expression in WT and *Ifnar*^{-/-} BMMs upon infection with *L. pneumophila* was determined at indicated time points by qRT-PCR (E) and western blot (F). Cells overexpressing IRG1-Myc-DDK (pIRG1) were loaded as a positive control (F). (G-I) *Ifnar*^{-/-} BMMs overexpressing IRG1-GFP or GFP only were infected with DsRed-expressing *L. pneumophila* (red). Cells were fixed 24 h p.i., representative images taken (G), and overall infection rate (H) as well as number of intracellular bacteria per cell determined by manual counting (I). (G) Scale bars indicate 5 μm. Data are mean + s.e.m. of 2 (A, B) or 4 (E) independent experiments done in triplicates or 3 independent experiments done in

quadruplicates (C, D). * $p < 0.05$, ** $p < 0.01$, *** $p < 0.001$, no indication if not significant (Mann-Whitney U test). (F) Representative blot of 3 independent experiments. (H, I) > 100 GFP- / IRG1-GFP-expressing cells were counted manually for intracellular bacterial numbers, data represent mean + s.e.m. of 2 independent experiments done in duplicates * $p < 0.05$, no indication if not significant (Mann-Whitney U test).

doi:10.1371/journal.ppat.1005408.g006

In line with the robust expression of IRG1 upon *L. pneumophila* infection *in vivo* (Fig 8D), GC-MS measurements revealed a strong production of itaconic acid also in *L. pneumophila*-infected mouse lungs (Fig 8E). Notably, IRG1 expression as well as itaconic acid production *in vivo* were largely dependent on functional IFN signaling (Fig 8D and 8E).

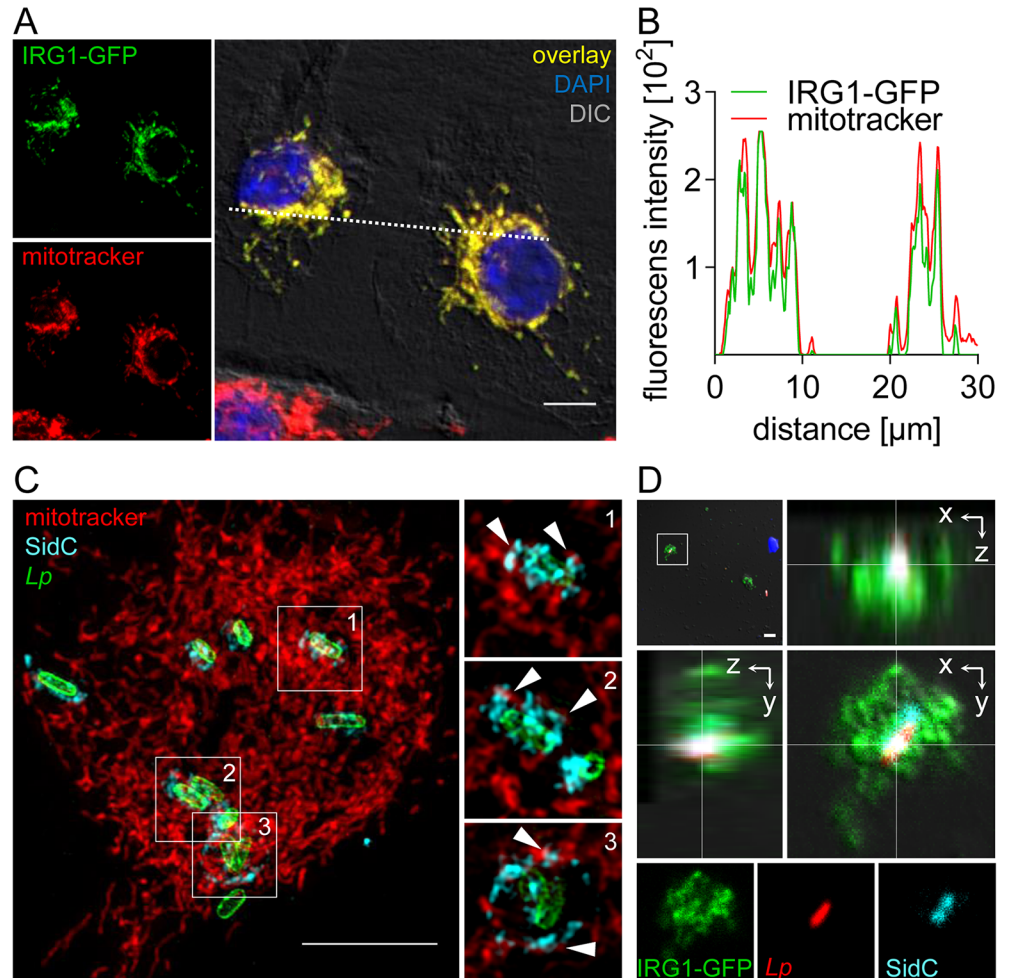


Fig 7. Mitochondrial IRG1 closely associates with LCVs. (A, B) *Ifnar*^{-/-} BMMs overexpressing IRG1-GFP (green) were stained with mitotracker (red), fixed and nuclei were visualized by DAPI (blue) staining. Images represent maximum intensity projections of z-stacks of 10 individual 1.4 μm thick sections. (B) Fluorescence intensity profiles of IRG1-GFP and mitotracker along the dotted line in (A) are depicted. (C) Super-resolution fluorescent image generated by structured illumination microscopy of BMMs stained with mitotracker (red) and subsequently infected with *L. pneumophila* for 2 h. Bacteria and LCVs were visualized in fixed cells by *L. pneumophila* (green) and SidC (LCV-located *L. pneumophila*-protein; cyan) staining, respectively. Large overview image represents maximum intensity projection of a z-stack of 30 individual 0.126 μm thick sections. Enlarged sections in the left panel depict one single confocal plane for each selected LCV according to numbers in the overview image. White arrowheads point towards close associations of mitochondria with the LCV membrane. (D) *Ifnar*^{-/-} BMMs overexpressing IRG1-GFP were infected with DsRed-expressing *L. pneumophila* wt (red). 2 h p.i. cells were homogenized and LCVs and nuclei were visualized by SidC (LCV-located *L. pneumophila*-protein; cyan) and DAPI (blue) staining. Framed area from the upper left overview image is shown as orthogonal view of a z-stack of 8 individual 0.68 μm thick sections and as single channels for depicted section. (A, C, D) Scale bars indicate 5 μm .

doi:10.1371/journal.ppat.1005408.g007

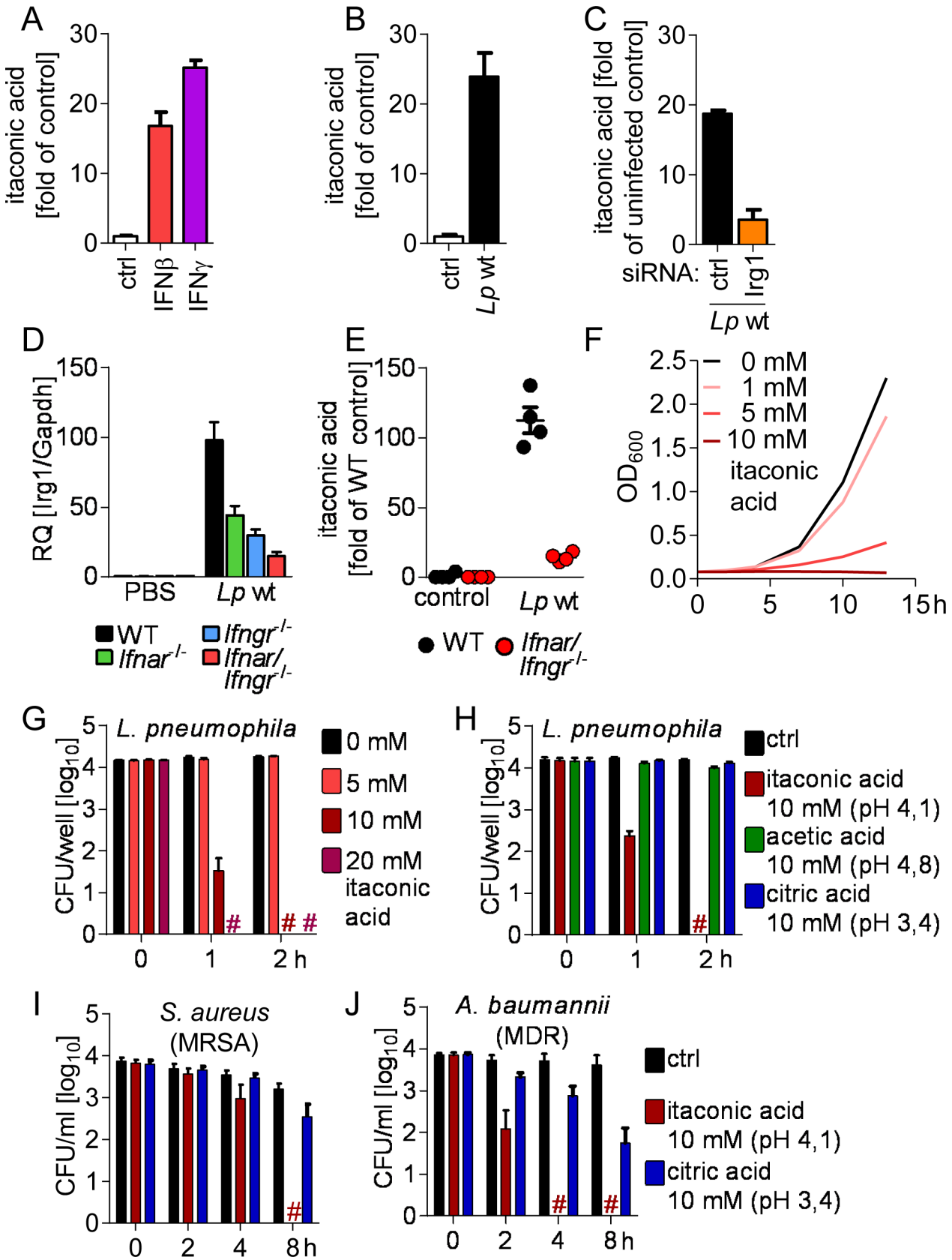


Fig 8. IRG1 mediates production of itaconic acid, which is bactericidal against *L. pneumophila* as well as multidrug-resistant Gram-positive and -negative bacteria. (A-C) Intracellular levels of itaconic acid were measured by GC-MS in BMMs after stimulation with 50 U/ml IFN β or IFN γ for 16–18 h (A), infection with *L. pneumophila* for 24 h (B), and in BMMs transfected with siRNAs 24 h prior infection and infected with *L. pneumophila* for 24 h (C). (D, E) Irg1 expression (D) and itaconic acid levels (E) in lungs of *L. pneumophila*-infected or control mice measured by qRT-PCR or GC-MS, respectively, 2 d p.i.. (F) Itaconic acid was added to *L. pneumophila* in liquid culture and bacterial growth was assessed. (G-J) *L. pneumophila*, *S. aureus* (MRSA) and *A. baumannii* (MDR) were incubated in PBS containing itaconic acid or related acids, and numbers of viable bacteria were determined by CFU counting. (A-C) Data represent mean + s.e.m. of 3 (A) or 4 (B, C) experiments, done in sextuplicates pooled for GC-MS analysis. (D, E) Data represent mean + s.e.m. of 4 (E) or 5 (D) mice per group. (F) Representative graph of 3 independent experiments. (E, F) Data represent mean + s.e.m. of 2 (G) or 3 (H-J) experiments done in triplicates. # No viable bacteria were detected.

doi:10.1371/journal.ppat.1005408.g008

Next, we assessed the antibacterial potential of itaconic acid on *L. pneumophila*. In line with previous findings for *M. tuberculosis* and *S. enterica* [30], we found itaconic acid had an inhibitory effect on *L. pneumophila* growth in liquid culture (Fig 8F), however, at concentrations previously found insufficient to restrict bacterial growth. Importantly, itaconic acid, but not related organic acids, was capable of killing *L. pneumophila* as well as multidrug-resistant Gram-positive and -negative isolates (Fig 8G–8J) at concentrations that have recently been measured in activated RAW264.7 macrophages [30]. We thus conclude that IRG1 restricts *L. pneumophila* in their LCVs in macrophages through catalyzing the production of the broadly bactericidal metabolite itaconic acid.

Discussion

IFNs execute antimicrobial functions by stimulating the expression of hundreds of ISGs. Recent large-scale examinations of ISGs have shed light on their antiviral activities [32–38], and individual ISGs, including immunity-related GTPases and GBPs, are known to localize to microbial vacuoles and to restrict bacterial infection [39–44]. However, the function of IFNs and ISGs during bacterial infections have not been systematically examined, and the molecular mechanism of IFN-mediated restriction of many bacterial infections remains unknown.

We therefore globally profiled the effects of type I and II IFNs on the transcriptome and subcellular proteome during *L. pneumophila* infection, thereby providing an important resource for IFN-mediated effects on basic cellular functions during infection. We demonstrate that both IFNs are master regulators of gene expression. Within macrophages, IFNs induce extensive remodeling of bacterial vacuoles, thereby altering their permissiveness for bacterial growth (Fig 9). Neither types of IFNs disturbed the establishment of the LCV but targeted several proteins involved in nucleic acid detection, antigen presentation and antibacterial defense to bacterial vacuoles. Furthermore, we demonstrate that IFN-dependent activation of CD11c⁺ cells (most likely alveolar macrophages) is critical for restricting infection *in vivo*.

Interestingly, the comparison of our proteomic data with the INTERFEROME database as well as our transcriptomic data indicates that a large subset of IFN-dependently LCV-enriched proteins is not transcriptionally regulated. This reveals a hitherto unknown mode of action of IFNs, and suggests that IFNs are able to control the spatial distribution of a subset of proteins, potentially via the activation of signaling molecules that control protein recruitment.

Mitochondrial proteins account for almost one third of identified LCV proteins, whereas the previously reported proteome of latex bead-phagosomes contained only 3–4% mitochondrial proteins [45]. Mitochondria have long been known to attach to LCVs as well as to other microbe-containing vacuoles [6,46,47]. The mechanisms underlying mitochondrial attachment, and most importantly, their biological function at the LCV remain, however, largely unknown. *L. pneumophila* secretes a mitochondrial carrier protein (LncP) through its T4SS [48] and might thereby actively recruit the organelles as a source of energy or nutritional metabolites. Alternatively, mitochondria are actively recruited to phagosomes that contain bacteria by a Toll-like receptor (TLR)-dependent mechanism [49]. The TLR-mediated recruitment

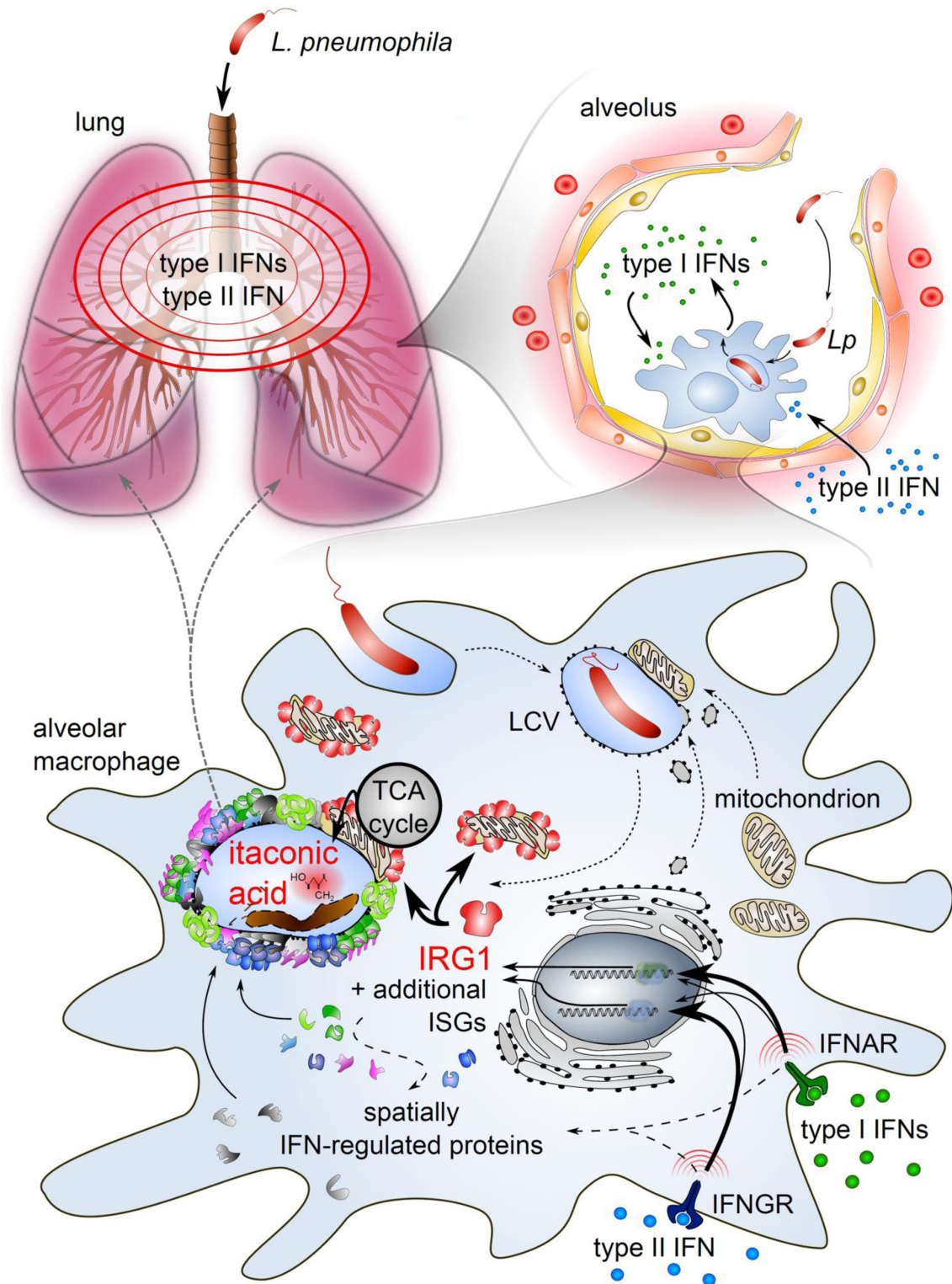


Fig 9. Overview of the type I and II IFN-driven, alveolar macrophage-intrinsic defense pathway that restricts *L. pneumophila* during lung infection (as discussed in the text).

doi:10.1371/journal.ppat.1005408.g009

of mitochondria and the concomitant IFN-dependent up-regulation of antimicrobial proteins within this organelle might thus represent a combined strategy of the immune system to counteract intravacuolar pathogens.

We demonstrate for the first time that the mitochondrial protein IRG1 localizes in close association with a microbial vacuole, and indicate that IRG1 activity is able to restrict *Legionella* inside their LCVs. As discussed above, this IRG1 accumulation on LCVs is most likely dependent on IFN-mediated upregulation of IRG1 within mitochondria and *Legionella*- and/or TLR-dependent recruitment of those organelles to LCVs.

IRG1 has recently been identified as an enzyme catalysing the production of itaconic acid following decarboxylation of the tricarboxylic acid cycle metabolite cis-aconitate [30]. Itaconic acid was found to exert bacteriostatic effects on *Mycobacteria* and *Salmonella* in liquid bacterial cultures [30]. We demonstrate that itaconic acid production *in vivo* is entirely dependent on IFN signals. In addition, we report for the first time a directly bactericidal effect of itaconic acid on different bacterial pathogens, which contrasts to the merely bacteriostatic activity recently reported [30]. Such different effects might be reflective of metabolic differences amongst these bacterial species. In *M. tuberculosis*, itaconic acid is thought to inhibit bacterial growth by inhibiting the glyoxylate shunt [30,50]. However, this pathway is believed to be absent in *L. pneumophila* [51]. We speculate that the bactericidal activity of itaconic acid on *L. pneumophila* involves the accumulation of toxic propionyl-CoA concentrations following inhibition of isocitrate lyase or methylisocitrate lyase [30,52], or the blocking of other pathways. We further assume that the IRG1/itaconic acid pathway acts in concert with established antibacterial factors such as IRGM1 and GBPs to completely eliminate *L. pneumophila* in IFN-activated macrophages and mice [15,53].

Type II IFN is well-known for its activation of antibacterial immunity to most intravacuolar bacteria, whereas type I IFNs have been shown to either enhance or inhibit those responses [54]. Using an unbiased, quantitative approach we show here that, in principle, both types of IFNs are able to induce most known antibacterial ISGs (e.g. GBPs, immunity-regulated GTPases, IRG1). One could speculate that the differential roles of type I IFNs in various bacterial infections might be explained by differences in the architecture of the bacterial vacuoles, and the relative contribution of IFN-dependent defense systems versus other intracellular or extracellular immune mechanisms.

In conclusion, our study provides for the first time comprehensive insight into the transcriptional and spatial regulations induced by type I and II IFNs that lead to critical modifications in the proteome of bacterial vacuoles, and it identifies a novel IFN-controlled defense pathway against *L. pneumophila* infection. In the future, therapeutic stimulation of IRG1 or delivery of encapsulated itaconic acid might be useful to fight intracellular and multidrug-resistant bacteria.

Materials and Methods

Bacteria

The *L. pneumophila* serogroup 1 strain JR32, the $\Delta flaA$ mutant, JR32 expressing eGFP or DsRed and the culture conditions have been described previously [11,55]. $\Delta flaA$ mutants expressing eGFP or DsRed have been generated in this study using plasmids published recently [55]. A clinical isolate of methicillin resistant *Staphylococcus aureus* (MRSA) has been obtained from the Charité microbiology department, the multidrug-resistant *Acinetobacter baumannii* isolate A9703 was kindly provided by Harald Seifert, University Cologne, Germany. *S. aureus* and *A. baumannii* were cultured on LB agar.

Ethics statement

All animal experiments were approved by institutional (Charité –Universitätsmedizin Berlin) and governmental animal welfare committees (LAGeSo Berlin; approval IDs G0446/08, G0278/11, G0440/12).

Mice

Casp11^{-/-}, *Ifnar*^{-/-}, *Ifngr*^{-/-}, *Rip3*^{-/-}, *Ifnar/Ifngr*^{-/-} and *Nos2*^{-/-} mice were on a C57BL/6 background [15,56,57]. C57BL/6 CD45.1 mice and transgenic CD11c-DTR-GFP [58] mice were bred and maintained at the University of Melbourne.

In vivo infection

All mice used were on C57BL/6J background, 8–10 weeks old and female. Anaesthetized mice were intranasally infected with 1×10^6 *L. pneumophila* in 40 μ l of PBS [15].

RNA extraction, microarray analysis and upstream regulator analysis

Lungs were flushed via the pulmonary artery with sterile saline and homogenized in Trizol (Life Technologies) [59]. Homogenized lungs were pooled (5 mice per group) and RNA extraction was carried out according to manufacturer's instructions. RNA amounts were estimated with a NanoDrop 1000 UV-Vis spectrophotometer (Kisker) and RNA integrity was confirmed using an Agilent 2100 Bioanalyzer with a RNA Nano 6000 microfluidics kit (Agilent Technologies). Microarray analysis was performed as dual-color hybridizations. In order to compensate dye-specific effects and to ensure statistically relevant data, color-swap dye-reversal hybridizations were performed [60]. RNA labeling was done with a two-color Quick Amp Labeling Kit according to the supplier's recommendations (Agilent Technologies). In brief, mRNA was reverse transcribed and amplified using an oligo-dT-T7 promoter primer, and labeled with Cyanine 3-CTP or Cyanine 5-CTP. After precipitation, purification, and quantification, 1.25 μ g of each labeled cRNA was fragmented and hybridized to whole mouse genome 4x44K multipack microarrays (Design ID 014868) according to the manufacturer's protocol (Agilent Technologies). Scanning of microarrays was performed with 5 μ m resolution using a G2565CA high-resolution laser microarray scanner (Agilent Technologies) with XDR extended range. Microarray image data were analyzed and extracted with the Image Analysis/Feature Extraction software G2567AA v. A.10.10.1.1 (Agilent Technologies) using default settings and the protocol GE2_1010_Sep10. The extracted MAGE-ML files were subsequently analyzed with the Rosetta Resolver, Build 7.2.2 SP1.31 (Rosetta Biosoftware). Ratio profiles comprising single hybridizations were combined in an error-weighted fashion to create ratio experiments. A 1.5-fold change expression cut-off for ratio experiments was applied together with anti-correlation of ratio profiles, rendering the microarray analysis highly significant ($p < 0.01$), robust, and reproducible. The data discussed in this publication have been deposited in NCBI's Gene Expression Omnibus and are accessible through GEO Series accession number GSE60085. Genes identified to be significantly up-regulated upon *L. pneumophila* infection (> 2 -fold increase, $p < 0.05$ in infected versus PBS treated WT mice; S3 Dataset) were analyzed for their predicted upstream regulators using the Ingenuity Pathway Analysis (IPA) software (Ingenuity System). Only upstream regulators with an activation z-score > 2 (predicted activators) were considered and further categorized in respective groups.

Bone marrow chimeric mice

Chimeras were generated as described recently [61] (Fig 2A). Briefly, CD45.1⁺ mice were lethally irradiated twice with 550 cGy and reconstituted with a 1:1 mix of 1.5×10^6 bone marrow cells from C57BL/6 WT or *Ifnar/Ifngr*^{-/-} and transgenic CD11c-DTR-GFP mice (all CD45.2⁺). Chimeric mice were allowed to reconstitute for at least 10 weeks. Only those mice that contained < 10% host cells were included in experiments. Depletion of CD11c⁺ cells was achieved by injection of CD11c-DTR-GFP chimeric mice intraperitoneally three times with 100 ng diphtheria toxin (Sigma-Aldrich) on days -2, +1 and +4 prior to and during infection.

Flow cytometry

Preparation of lung cells for the determination of cell exchange in chimeric mice has been described [62]. The lung cell suspension was labelled with anti-panCD45 (30-F11, eBioscience), anti-CD45.1 (A20, BD Pharmingen), anti-CD45.2 (104, BD Pharmingen), anti-Ly6G (1A8, BD Pharmingen), anti-CD11c (N418, eBioscience) anti-MHC-II (M5/114.15.2, eBioscience), anti-Siglec-F, (E50-2440, BD Pharmingen) and anti-CD64 (X54-5/7.1, BD Pharmingen). Cells were analyzed on a Becton Dickinson LSRFortessa flow cytometer using FACSDIVA software (BD Biosciences).

Cell isolation

Bone marrow-derived macrophages (BMMs) were prepared from femurs and tibiae. Alveolar macrophages (AMs) were isolated by extensive bronchoalveolar lavage and purity was checked by flow cytometry.

Cell transfection and infection

BMMs and AMs were transfected with control non-silencing or a mix of two gene-specific siRNAs (S1 Table) 24 h prior to infection (Life Technologies) using HiPerfect (Qiagen), and with EGFP (pEGFP-N1, Clontech) or full-length murine IRG1 (NM_008392) with a carboxy-terminal TurboGFP (pCMV6-AC-GFP, OriGene) or Myc-DDK (pCMV6-Entry, OriGene) tag 48 h prior to infection using ViaFect (Promega). BMMs and AMs were infected with *L. pneumophila* wt or Δ *flaA*, centrifuged at 200 g for 5 min and incubated for the indicated time intervals. Where indicated, cells were incubated either with IFN β , IFN γ or both 16–18 h prior to and during infection at a concentration of 50 U/ml unless stated otherwise. For intracellular replication assays, cell death and mitochondrial ROS assays, BMMs or AMs were infected with *L. pneumophila*, centrifuged at 200 g for 5 min and incubated at 37°C for 30 min. Cells were washed with PBS and were further incubated with RPMI with 15% L cell supernatant and 10% FCS (BMMs) or 10% FCS (AMs) containing 50 μ g/ml gentamicin for 1 h in order to kill extracellular bacteria.

Quantitative RT-PCR

Total RNA was isolated from BMMs or lung homogenates using the PerfectPure RNA purification system (5 Prime) or Trizol (Life Technologies), respectively, reverse-transcribed using high capacity reverse transcription kit (Applied Biosystems), and quantitative PCR was performed using TaqMan assays (Life Technologies) or self-designed primer sets, respectively (S2 Table), on an ABI 7300 instrument. The input was normalized to the average expression of GAPDH and relative expression (relative quantity, RQ) of the respective gene in untreated cells or PBS-treated mice was set as 1.

Cell death and mitochondrial ROS measurement

Cells were detached using ice cold PBS containing 2 mM EDTA and stained for mitochondrial ROS (MitoSOX Red, Life Technologies) or cell death (7-AAD, eBioscience or LIVE/DEAD fixable red dead cell stain, Life Technologies). Proportions of mitochondrial ROS producing (MitoSOX⁺) or dead (7AAD⁺ or LIVE/DEAD⁺) cells were determined in infected (GFP⁺) and uninfected (GFP⁻) cell populations by flow cytometry (FACScan, BD or MACSQuant, Miltenyi Biotec). Data analysis was done using FlowJo software (Tree Star).

Immunoblotting

For immunoblotting cells were lysed in SDS- and 1% NP40-containing lysis buffer, cleared extracts were separated by SDS-PAGE and SDS-gels were blotted onto Hybond nitrocellulose membranes. Antibodies against IRG1 (HPA040143, Sigma-Aldrich) and actin (sc-1616, Santa Cruz) followed by respective fluorophore-linked secondary antibodies (Rockland) were used and blots analyzed using an Odyssey infrared imaging system (Li-Cor).

Confocal laser scanning, structured illumination and time-lapse microscopy

BMMs were seeded onto glass coverslips or high precision glass coverslips for structured illumination microscopy. Where indicated, cells were stained with MitoTracker Orange (Life Technologies) approximately 2 h prior infection. Cells were fixed with 3% PFA or acetone/methanol if MitoTracker was used. For homogenization, cells were seeded in 6 well plates, infected and 2 h p.i. washed with PBS, scraped in homogenization buffer (20 mM Hepes, 250 mM sucrose, 0.5 mM EGTA, pH 7.2) and homogenized using a ball homogenizer (Isobiotec). Homogenates were centrifuged onto glass coverslips and fixed with 3% PFA. For intracellular staining, cells were permeabilized with 0.1% triton x-100 and blocked with 5% FCS. Where indicated cells were stained with an affinity purified rabbit anti-SidC [63] and a mouse anti-*Legionella pneumophila* (ab69239, Abcam) antibody followed by the respective anti-rabbit Alexa Fluor 633-conjugated (Molecular Probes) and anti-mouse DyLight 405-conjugated (Thermo Scientific) secondary antibody. Samples were mounted on slides using PermaFluor (Thermo Scientific) containing DAPI or Mowiol (Sigma-Aldrich). For confocal laser scanning microscopy samples were examined using a LSM 780 microscope (objective: Plan Apochromat 63×/1.40 oil DIC M27, Carl-Zeiss). Structured illumination microscopy was performed on an ELYRA PS.1 microscope (objective: Plan Apochromat 63×/1.40 oil DIC M27, Carl-Zeiss). Data sets were acquired with five grating phases and three rotations, post-processed in ZEN (Carl-Zeiss) using automatically determined parameters, and colour channels were subsequently aligned based on parameters determined from control measurements with multispectral beads performed with identical instrument settings. For time-lapse confocal microscopy cells were seeded in 8 well μ -slides (Ibidi) and stained with MitoTracker Orange (Life Technologies) approximately 2 h prior infection. Images were acquired on a LSM 780 microscope (objective: Plan Apochromat 63×/1.40 oil DIC M27, Carl-Zeiss) at 37°C/5% CO₂. All images were processed using ZEN (Carl-Zeiss) and ImageJ software (<http://imagej.nih.gov/ij/>).

LCV isolation

BMMs were left untreated or treated with 50 U/ml IFN β or IFN γ for 16–18 h prior to and during infection and subsequently infected with *L. pneumophila* Δ *flaA* for 2 h at a m.o.i of 50. LCVs from BMMs were isolated as described previously for RAW264.7 cells and amoeba [27,64]. Briefly, cells were washed with PBS, scraped in homogenization buffer (20 mM Hepes,

250 mM sucrose, 0.5 mM EGTA, pH 7.2), homogenized using a ball homogenizer (Isobiotec), and incubated with an anti-SidC antibody [63] followed by a secondary anti-rabbit antibody coupled to magnetic beads (Miltenyi Biotec). The LCVs were separated in a magnetic field and further purified by a Histodenz density gradient centrifugation step.

Proteomic analysis

Isolated LCV from 4 IFN β , 5 IFN γ , and 6 untreated biological replicates were analyzed. LCV samples were solubilized in 1% RapiGest (Waters) in 50 mM Tris pH 8.0, reduced with 10 mM tris (2-carboxyethyl)phosphine (TCEP) (Pierce), and heated at 70°C for 10 min. After cooling, proteins were alkylated in 10 mM iodoacetamide (Sigma-Aldrich), and alkylation was quenched in 20 mM DTT. Protein concentrations were measured by the EZQ assay (Life Technologies), and 8 μ g of protein was digested by trypsin overnight at 30°C, after diluting the RapiGest concentration to 0.1%. RapiGest was removed from the sample by acidification to 2% trifluoroacetic acid (TFA) and incubation at 37°C for 1 h, followed by centrifugation at 14k g for 30 min. Peptides were then desalted with Microspin C18 solid phase extraction columns (The Nest Group). After drying down, peptides were redissolved in 1% TFA.

For each sample, 2 μ g of peptides were analyzed on an Orbitrap Velos Pro mass spectrometer coupled to an Ultimate 3000 UHPLC system with a 50 cm EasySpray analytical column (75 μ m ID, 3 μ m C18) in conjunction with a Pepmap trapping column (100 μ m x 2 cm, 5 μ m C18) (Thermo-Fisher Scientific). Acquisition settings were: lockmass of 445.120024, MS1 with 60,000 resolution, top 20 CID MS/MS using Rapid Scan, monoisotopic precursor selection, unassigned charge states and $z = 1$ rejected, dynamic exclusion of 60s with repeat count 1. 6 h linear gradients were performed from 3% solvent B to 35% solvent B (solvent A: 0.1% formic acid, solvent B: 80% acetonitrile 0.08% formic acid) with a 30 min washing and re-equilibration step [65].

Protein identification and quantification were performed using MaxQuant Version 1.4.1.2 [66] with the following parameters: stable modification carbamidomethyl (C); variable modifications of methionine oxidation, and protein N-terminal acetylation, and 2 missed cleavages. Searches were conducted using a Uniprot-Trembl *Mus musculus* database downloaded May 1, 2013, *Legionella pneumophila* strain Philadelphia 1 downloaded December 4, 2013, and common contaminants. Identifications were filtered at a 1% false-discovery rate (FDR) at the protein level, accepting a minimum peptide length of 7. Quantification used only razor and unique peptides, and required a minimum ratio count of 2. “Re-quantify” and “match between runs” were enabled.

Gene Ontology (GO) analysis

The host proteins identified in all six LCV samples from untreated macrophages (S1 Dataset) were analyzed for overrepresented cellular components using g:Profiler (<http://biit.cs.ut.ee/gprofiler/>) [67] with default settings including g:SCS algorithm for multiple testing correction. All overrepresented child terms of the GO term *intracellular membrane-bounded organelle* (GO:0043231, $p = 3.55 \times 10^{-300}$) were extracted. The total result of GO enrichment analysis for cellular components (CC) can be found in S1 Dataset. To identify and visualize biological processes that are overrepresented at LCVs of untreated cells, the same list of proteins was analyzed with BiNGO [68] for Cytoscape [69] using default settings including hypergeometric testing and Benjamini & Hochberg FDR correction. Significance level cut-off was set to $< 10^{-10}$ (terms with p-values $> 10^{-10}$ are depicted if p-value of final child term was $< 10^{-10}$). The total result of GO enrichment analysis for biological process (BP) can be found in S1 Dataset.

Integrated STRING network analysis

Proteins identified in IFN-treated (in 4 of 4 IFN β or 5 of 5 IFN γ treated samples) but not in untreated samples (≤ 1 of 6 samples; hereafter called “qualitative changers”) and proteins with significant higher abundance in IFN-treated versus untreated samples (\log_2 LFQ intensity ratio ≥ 1 , $p < 0.05$; hereafter called “quantitative changers”) (S2 Dataset) were combined and analyzed for protein-protein interaction networks using STRING database (<http://string-db.org/>). The identified network was extracted and loaded into Cytoscape [69] for visualization; only interactions with a minimum STRING combined score of 0.400, which represents the default medium confidence level in STRING, were kept. For identification of subnetworks of overrepresented biological functions, the combined protein list was analyzed by g:Profiler (<http://biit.cs.ut.ee/gprofiler/>) [67]. Protein lists of overrepresented GO terms were extracted and subnetworks were built using STRING and Cytoscape. To identify proteins within the networks that were also transcriptionally induced by IFNs upon *in vivo* *L. pneumophila* infection, the combined list of qualitative and quantitative changing proteins was compared to genes with a >2 -fold change ($p < 0.05$) in *L. pneumophila* infected *Ifnar1/Ifngr1*^{-/-} versus WT mice (S3 Dataset). To cross-reference gene names from transcriptome analysis and Uniprot identifier from proteome analysis, both lists were uploaded to STRING and respective output lists were compared against each other. For identification of ISGs the protein list was also compared against the INTERFEROME database [28].

Gas chromatography-mass spectrometry (GC-MS) analysis of itaconic acid production

10⁶ BMMs per well were left untreated, were incubated either with 50 U/ml IFN β or IFN γ for 16–18 h or were infected with *L. pneumophila* for 24 h. Where indicated cells were transfected with control non-silencing or a mix of two gene-specific siRNAs as described above 24 h prior to infection. After washing with PBS, metabolism was stopped adding 200 μ l cooled 50% MeOH (-20°C) and cells were collected by scraping in the MeOH solution. Cells from 6 wells were pooled, 240 μ l chloroform were added, samples centrifuged for 10 min at 10k g and supernatant containing polar metabolites was dried under vacuum overnight. For *in vivo* experiments mice were infected with *L. pneumophila* wt or left untreated. 2 d p.i. lungs were flushed with sterile PBS, shock frozen in liquid nitrogen and stored at -80°C . Lung tissue was homogenized using a Precellys24 bead homogenizer in chloroform (6 mL/g), methanol (6 mL/g), and distilled water (4 mL/g). Samples were centrifuged for 10 min at 10k g and supernatant containing polar metabolites was dried under vacuum overnight. For GC/MS analysis samples were processed using protocols and machine settings described elsewhere [70]. Data were analyzed using ChromaTOF (Leco) and the custom software MetMax [71]. Data were normalized on mean of total area of all analyzed metabolites (*in vitro* samples) or on internal standard (*in vivo* samples) and average amount of itaconic acid in untreated cells or control mice was set as 1.

Itaconic acid growth inhibition and killing assay

For growth inhibition bacteria were grown in AYE broth containing indicated amounts of itaconic acid. OD₆₀₀ was determined over time. For killing assays bacteria were resuspended in PBS and respective amounts of itaconic acid, acetic acid or citric acid were added. Bacteria were incubated at 37°C and plated at indicated time points to assess viability.

Statistical analysis

Data were statistically analyzed using GraphPad Prism software. Groups were compared with two-tailed Mann-Whitney U test or, for multiple-group comparisons with Kruskal-Wallis

analysis of variance followed by Dunn's multiple comparison test. Differences with $p < 0.05$ were considered statistically significant.

Accession code

GEO: GSE60085.

Supporting Information

S1 Fig. Proportions of CD11c⁺ GFP⁺ (undepleted) cells in DTX treated chimeric mice.

CD45.1 recipient mice were lethally irradiated and repopulated with a 1:1 mixture of bone-marrow cells from CD45.2 transgenic CD11c-DTR-GFP and *Ifnar*/*Ifngr*^{-/-} or WT donor mice. (A) Repopulation with CD45.2 donor cells within CD45.1 recipient mice was assessed by flow cytometry of whole lung cells (representative dot plot). (B) Cell proportions were determined in total lung homogenates from CD11c-DTR-GFP / WT + DTX and CD11c-DTR-GFP / *Ifnar*/*Ifngr*^{-/-} + DTX mice by flow cytometry and gating on CD45⁺ CD11c⁺ (all CD11c⁺ cells), CD45⁺ CD11c⁺ CD64⁺ / SiglecF⁺ (macrophages / monocytes) or CD45⁺ CD11c⁺ CD64⁻ SiglecF⁻ MHC-II^{hi} (dendritic cells). Only mice with <10% GFP⁺ (of all CD11c⁺) cells were considered for analysis depicted in Fig 2C. No cut-off was applied for analysis depicted in Fig 2B. (PDF)

S2 Fig. Macrophage activation by IFNs restricts intracellular growth of *L. pneumophila*.

(A-C) Intracellular growth of *L. pneumophila* Δ *flaA* in WT BMMs left untreated or treated with IFN β , IFN γ or both 16–18 h prior to and during infection. (D) Intracellular growth of *L. pneumophila* wt and Δ *flaA* in WT and *Ifnar*^{-/-} BMMs. Data represent mean + s.e.m. of 2 (B), 4 (C) or 5 (A, D) experiments done in triplicates. * $p < 0.05$, ** $p < 0.01$, *** $p < 0.001$, no indication if not significant (two-tailed Mann-Whitey U test), significance was tested against untreated control (A-C) or between wild-type and knock-out cells for each condition (D). (PDF)

S3 Fig. *L. pneumophila* restriction in macrophages is largely independent of IFN-driven cell death. Cell death of infected (GFP⁺) cells (A; gating strategy) in WT BMMs left untreated or treated with 50 U/ml IFN β or IFN γ 16–18 h prior to and during infection (D), *Ifnar*^{-/-} (B, C), and *Rip3*^{-/-} (E) BMMs infected with *L. pneumophila* wt or Δ *flaA* expressing eGFP was determined by flow cytometry. Data represent mean + s.e.m. of 2 (E) or 4 (C, D) experiments done in triplicates. * $p < 0.05$, ** $p < 0.01$, no indication if not significant (two-tailed Mann-Whitey U test), significance was tested against untreated control (D) or between wild-type and knock-out cells for each condition (C, E). (B) Representative blots of 4 independent experiments done in triplicates (summarized in C) are shown. (PDF)

S4 Fig. *L. pneumophila* restriction in macrophages is largely independent of RIP3, caspase-11 and iNOS. Intracellular growth of *L. pneumophila* wt and Δ *flaA* in WT, *Rip3*^{-/-} (A, D), *Casp11*^{-/-} (B, E) and *Nos2*^{-/-} (C, F) BMMs left untreated (D-F) or treated with IFN β or IFN γ 16–18 h prior and during infection (A-C). Data represent mean + s.e.m. of 2 (A, B, D, E) or 3 (C, F) experiments done in triplicates. No significant differences between wild-type and knock-out cells were found for any condition (two-tailed Mann-Whitey U test). (PDF)

S5 Fig. Proteins involved in metabolic processes and transport and localization are strongly enriched at LCVs. GO enrichment analysis for biological processes (BP) of the 2307 host proteins identified in untreated LCV samples using BiNGO (Cytoscape). Hierarchical structure,

read from inside (first node, blue encircled) to outside (final nodes, pink encircled). Subnetworks of highly enriched biological processes are highlighted (metabolic process, transport/localization, biological regulation, immune system process). Significance cut-off value for visualization was set to 10^{-10} , ancestor terms with $p > 10^{-10}$ are depicted if final child term had p -value $< 10^{-10}$. Tabular outline of whole analysis including exact p -values and full lists of proteins for each GO term can be found in [S2 Dataset](#).

(PDF)

S6 Fig. Proteins differentially targeted to the LCV upon IFN β or IFN γ treatment. Quantitative proteomic analysis of LCVs isolated 2 h p.i. with *L. pneumophila* Δ *flaA* from BMMs left untreated or treated with 50 U/ml IFN β or IFN γ 16–18 h prior to and during infection. Bar graphs show top 20 proteins with a significant higher (red) or lower (green) abundance at LCVs from IFN β - (A, B) or IFN γ - (D, E) treated BMMs compared to untreated cells, and direct comparison of IFN β - versus IFN γ -treated samples (C, F). Bar graphs correspond with volcano blots depicted in [Fig 3C–3E](#). Proteomic analysis was done from 6 (untreated), 5 (IFN γ) and 4 (IFN β) individual LCV isolations.

(PDF)

S7 Fig. IRG1 is transcriptionally regulated by type I and type II IFNs. *Irg1* gene expression in WT BMMs left untreated or treated with 50 U/ml IFN β or IFN γ for 16–18 h was determined by qRT-PCR. Data are mean + s.e.m. of 2 independent experiments done in triplicates.

(PDF)

S8 Fig. Mitochondria stay in close proximity to intracellular *L. pneumophila*. Representative frames from time-lapse confocal imaging of mitotracker stained (red) WT BMMs infected with *L. pneumophila* Δ *flaA* expressing eGFP (green). Imaging starts approximately 2 h p.i.. White arrow points toward a single mitochondrion staying in close proximity of the intracellular *L. pneumophila*, while other mitochondria move dynamically within the cell (open white arrowhead). The full sequence of frames with a 1-minute-time resolution can be found in [S1 Video](#).

(PDF)

S9 Fig. Mitochondrial ROS production in *L. pneumophila*-infected cells is largely independent of type I IFN signalling and IRG1. WT BMMs transfected with siRNAs 24 h prior to infection (A), or WT and *Ifnar*^{-/-} BMMs (B) were infected with eGFP-expressing *L. pneumophila* wt and proportions of mitochondrial ROS producing (MitoSOX⁺) cells were determined by flow cytometry in infected (GFP⁺) and uninfected (GFP⁻) populations, respectively. Data represent mean + s.e.m. of 2 (B) or 4 (A) experiments done in triplicates.

(PDF)

S1 Dataset. In vivo transcriptome data of *L. pneumophila*-infected wild-type and IFN-receptor knock-out mice. Tabular outline of all genes significantly up- or down-regulated in WT mice upon *L. pneumophila* infection and their regulation in *Ifnar*^{-/-}, *Ifngr*^{-/-} and *Ifnar/Ifngr*^{-/-} mice upon infection.

(XLSX)

S2 Dataset. LCV proteome data of *L. pneumophila*-infected untreated BMMs. All host- and *Legionella*-derived proteins identified in samples of LCVs isolated from *L. pneumophila*-infected resting BMMs are listed. Tabular outline of total results of GO analyses of all identified host proteins for cellular component (CC; as depicted in [Fig 3B](#)), and biological process (BP; as depicted in [S5 Fig](#)) computed using G-profiler and BiNGO for Cytoscape, respectively.

(XLSX)

S3 Dataset. LCV proteome data untreated compared to IFN-treated BMMs. Quantification of host-derived proteins identified in samples of LCVs from resting BMMs against LCVs from IFN-treated BMMs as well as quantification of proteins from LCVs of IFN β against IFN γ treated BMMs.

(XLSX)

S1 Video. Mitochondria stay in close proximity to intracellular *L. pneumophila*. Time-lapse confocal imaging of mitotracker stained (red) WT BMMs infected with *L. pneumophila* Δ *flaA* expressing eGFP (green). Imaging starts approximately 2 h p.i. and single frames were taken every minute. See also [S8 Fig](#).

(AVI)

S1 Table. Oligonucleotides used for RNAi in this study.

(DOCX)

S2 Table. TaqMan assays and primer sets used for quantitative real-time PCR in this study.

(DOCX)

Acknowledgments

We thank U. Klemm for help with animal breeding, N. Reiling for helpful discussions related to the vacuole isolation, C. Roy for providing bacterial strains, and the assistance of the BCRT Flow Cytometry Lab.

Author Contributions

Conceived and designed the experiments: JN BO. Performed the experiments: JN CT MK AP AD OK BDD MT CH HH ASB IvD SB SK HJM AN. Analyzed the data: JN ADG ACH. Contributed reagents/materials/analysis tools: NS MW SH LES. Wrote the paper: JN LES BO.

References

1. Kumar Y, Valdivia RH (2009) Leading a sheltered life: intracellular pathogens and maintenance of vacuolar compartments. *Cell Host Microbe* 5: 593–601. doi: [10.1016/j.chom.2009.05.014](https://doi.org/10.1016/j.chom.2009.05.014) PMID: [19527886](https://pubmed.ncbi.nlm.nih.gov/19527886/)
2. MacMicking JD (2012) Interferon-inducible effector mechanisms in cell-autonomous immunity. *Nat Rev Immunol* 12: 367–382. doi: [10.1038/nri3210](https://doi.org/10.1038/nri3210) PMID: [22531325](https://pubmed.ncbi.nlm.nih.gov/22531325/)
3. Randow F, MacMicking JD, James LC (2013) Cellular self-defense: how cell-autonomous immunity protects against pathogens. *Science* 340: 701–706. doi: [10.1126/science.1233028](https://doi.org/10.1126/science.1233028) PMID: [23661752](https://pubmed.ncbi.nlm.nih.gov/23661752/)
4. Hertzog P, Forster S, Samarajiva S (2011) Systems biology of interferon responses. *J Interferon Cytokine Res* 31: 5–11. doi: [10.1089/jir.2010.0126](https://doi.org/10.1089/jir.2010.0126) PMID: [21226606](https://pubmed.ncbi.nlm.nih.gov/21226606/)
5. Isberg RR O'Connor TJ, Heidtman M (2009) The *Legionella pneumophila* replication vacuole: making a cosy niche inside host cells. *Nat Rev Microbiol* 7: 13–24. doi: [10.1038/nrmicro1967](https://doi.org/10.1038/nrmicro1967) PMID: [19011659](https://pubmed.ncbi.nlm.nih.gov/19011659/)
6. Horwitz MA (1983) Formation of a novel phagosome by the Legionnaires' disease bacterium (*Legionella pneumophila*) in human monocytes. *J Exp Med* 158: 1319–1331. PMID: [6619736](https://pubmed.ncbi.nlm.nih.gov/6619736/)
7. Chong A, Lima CA, Allan DS, Nasrallah GK, Garduno RA (2009) The purified and recombinant *Legionella pneumophila* chaperonin alters mitochondrial trafficking and microfilament organization. *Infect Immun* 77: 4724–4739. doi: [10.1128/IAI.00150-09](https://doi.org/10.1128/IAI.00150-09) PMID: [19687203](https://pubmed.ncbi.nlm.nih.gov/19687203/)
8. Tilney LG, Harb OS, Connelly PS, Robinson CG, Roy CR (2001) How the parasitic bacterium *Legionella pneumophila* modifies its phagosome and transforms it into rough ER: implications for conversion of plasma membrane to the ER membrane. *J Cell Sci* 114: 4637–4650. PMID: [11792828](https://pubmed.ncbi.nlm.nih.gov/11792828/)
9. Amer A, Franchi L, Kanneganti TD, Body-Malapel M, Ozoren N, et al. (2006) Regulation of *Legionella* phagosome maturation and infection through flagellin and host Ipaf. *J Biol Chem* 281: 35217–35223. PMID: [16984919](https://pubmed.ncbi.nlm.nih.gov/16984919/)

10. Molofsky AB, Byrne BG, Whitfield NN, Madigan CA, Fuse ET, et al. (2006) Cytosolic recognition of flagellin by mouse macrophages restricts *Legionella pneumophila* infection. *J Exp Med* 203: 1093–1104. PMID: [16606669](#)
11. Ren T, Zamboni DS, Roy CR, Dietrich WF, Vance RE (2006) Flagellin-deficient *Legionella* mutants evade caspase-1- and Naip5-mediated macrophage immunity. *PLoS Pathog* 2: e18. PMID: [16552444](#)
12. Zamboni DS, Kobayashi KS, Kohlsdorf T, Ogura Y, Long EM, et al. (2006) The Birc1e cytosolic pattern-recognition receptor contributes to the detection and control of *Legionella pneumophila* infection. *Nat Immunol* 7: 318–325. PMID: [16444259](#)
13. Kofoed EM, Vance RE (2011) Innate immune recognition of bacterial ligands by NAIPs determines inflammasome specificity. *Nature* 477: 592–595. doi: [10.1038/nature10394](#) PMID: [21874021](#)
14. Coers J, Vance RE, Fontana MF, Dietrich WF (2007) Restriction of *Legionella pneumophila* growth in macrophages requires the concerted action of cytokine and Naip5/Ipaf signalling pathways. *Cell Microbiol* 9: 2344–2357. PMID: [17506816](#)
15. Lippmann J, Muller HC, Naujoks J, Tabeling C, Shin S, et al. (2011) Dissection of a type I interferon pathway in controlling bacterial intracellular infection in mice. *Cell Microbiol* 13: 1668–1682. doi: [10.1111/j.1462-5822.2011.01646.x](#) PMID: [21790939](#)
16. Opitz B, Vinzing M, van Laak V, Schmeck B, Heine G, et al. (2006) *Legionella pneumophila* induces IFN β in lung epithelial cells via IPS-1 and IRF3, which also control bacterial replication. *J Biol Chem* 281: 36173–36179. PMID: [16984921](#)
17. Schiavoni G, Mauri C, Carlei D, Belardelli F, Pastoris MC, et al. (2004) Type I IFN protects permissive macrophages from *Legionella pneumophila* infection through an IFN- γ -independent pathway. *J Immunol* 173: 1266–1275. PMID: [15240719](#)
18. Plumlee CR, Lee C, Beg AA, Decker T, Shuman HA, et al. (2009) Interferons direct an effective innate response to *Legionella pneumophila* infection. *J Biol Chem* 284: 30058–30066. doi: [10.1074/jbc.M109.018283](#) PMID: [19720834](#)
19. Lippmann J, Rothenburg S, Deigendesch N, Eitel J, Meixenberger K, et al. (2008) IFN β responses induced by intracellular bacteria or cytosolic DNA in different human cells do not require ZBP1 (DLM-1/DAI). *Cell Microbiol* 10: 2579–2588. doi: [10.1111/j.1462-5822.2008.01232.x](#) PMID: [18771559](#)
20. Copenhaver AM, Casson CN, Nguyen HT, Fung TC, Duda MM, et al. (2014) Alveolar macrophages and neutrophils are the primary reservoir for *Legionella pneumophila* and mediate cytosolic surveillance of type IV secretion. *Infect Immun* 82: 4325–4336. doi: [10.1128/IAI.01891-14](#) PMID: [25092908](#)
21. Nogueira CV, Lindsten T, Jamieson AM, Case CL, Shin S, et al. (2009) Rapid pathogen-induced apoptosis: a mechanism used by dendritic cells to limit intracellular replication of *Legionella pneumophila*. *PLoS Pathog* 5: e1000478. doi: [10.1371/journal.ppat.1000478](#) PMID: [19521510](#)
22. Nash TW, Libby DM, Horwitz MA (1984) Interaction between the legionnaires' disease bacterium (*Legionella pneumophila*) and human alveolar macrophages. Influence of antibody, lymphokines, and hydrocortisone. *J Clin Invest* 74: 771–782. PMID: [6470140](#)
23. Bogdan C, Schleicher U (2006) Production of interferon- γ by myeloid cells—fact or fancy? *Trends Immunol* 27: 282–290. PMID: [16698319](#)
24. Robinson N, McComb S, Mulligan R, Dudani R, Krishnan L, et al. (2012) Type I interferon induces necroptosis in macrophages during infection with *Salmonella enterica* serovar Typhimurium. *Nat Immunol* 13: 954–962. doi: [10.1038/ni.2397](#) PMID: [22922364](#)
25. Aachoui Y, Leaf IA, Hagar JA, Fontana MF, Campos CG, et al. (2013) Caspase-11 protects against bacteria that escape the vacuole. *Science* 339: 975–978. doi: [10.1126/science.1230751](#) PMID: [23348507](#)
26. Nathan C, Shiloh MU (2000) Reactive oxygen and nitrogen intermediates in the relationship between mammalian hosts and microbial pathogens. *Proc Natl Acad Sci U S A* 97: 8841–8848. PMID: [10922044](#)
27. Hoffmann C, Finsel I, Hilbi H (2013) Pathogen vacuole purification from legionella-infected amoeba and macrophages. *Methods Mol Biol* 954: 309–321. doi: [10.1007/978-1-62703-161-5_18](#) PMID: [23150404](#)
28. Samarajiwa SA, Forster S, Auchetti K, Hertzog PJ (2009) INTERFEROME: the database of interferon regulated genes. *Nucleic Acids Res* 37: D852–857. doi: [10.1093/nar/gkn732](#) PMID: [18996892](#)
29. Degrandi D, Hoffmann R, Beuter-Gunia C, Pfeffer K (2009) The proinflammatory cytokine-induced IRG1 protein associates with mitochondria. *J Interferon Cytokine Res* 29: 55–67. doi: [10.1089/jir.2008.0013](#) PMID: [19014335](#)
30. Michelucci A, Cordes T, Ghelfi J, Pailot A, Reiling N, et al. (2013) Immune-responsive gene 1 protein links metabolism to immunity by catalyzing itaconic acid production. *Proc Natl Acad Sci U S A* 110: 7820–7825. doi: [10.1073/pnas.1218599110](#) PMID: [23610393](#)

31. Hall CJ, Boyle RH, Astin JW, Flores MV, Oehlers SH, et al. (2013) Immunoresponsive gene 1 augments bactericidal activity of macrophage-lineage cells by regulating beta-oxidation-dependent mitochondrial ROS production. *Cell Metab* 18: 265–278. doi: [10.1016/j.cmet.2013.06.018](https://doi.org/10.1016/j.cmet.2013.06.018) PMID: [23931757](https://pubmed.ncbi.nlm.nih.gov/23931757/)
32. Weekes MP, Tomasec P, Huttlin EL, Fielding CA, Nusinow D, et al. (2014) Quantitative temporal viromics: an approach to investigate host-pathogen interaction. *Cell* 157: 1460–1472. doi: [10.1016/j.cell.2014.04.028](https://doi.org/10.1016/j.cell.2014.04.028) PMID: [24906157](https://pubmed.ncbi.nlm.nih.gov/24906157/)
33. Schoggins JW, MacDuff DA, Imanaka N, Gainey MD, Shrestha B, et al. (2014) Pan-viral specificity of IFN-induced genes reveals new roles for cGAS in innate immunity. *Nature* 505: 691–695. doi: [10.1038/nature12862](https://doi.org/10.1038/nature12862) PMID: [24284630](https://pubmed.ncbi.nlm.nih.gov/24284630/)
34. Schoggins JW, Wilson SJ, Panis M, Murphy MY, Jones CT, et al. (2011) A diverse range of gene products are effectors of the type I interferon antiviral response. *Nature* 472: 481–485. doi: [10.1038/nature09907](https://doi.org/10.1038/nature09907) PMID: [21478870](https://pubmed.ncbi.nlm.nih.gov/21478870/)
35. Liu SY, Sanchez DJ, Aliyari R, Lu S, Cheng G (2012) Systematic identification of type I and type II interferon-induced antiviral factors. *Proc Natl Acad Sci U S A* 109: 4239–4244. doi: [10.1073/pnas.1114981109](https://doi.org/10.1073/pnas.1114981109) PMID: [22371602](https://pubmed.ncbi.nlm.nih.gov/22371602/)
36. Fusco DN, Brisac C, John SP, Huang YW, Chin CR, et al. (2013) A genetic screen identifies interferon-alpha effector genes required to suppress hepatitis C virus replication. *Gastroenterology* 144: 1438–1449. doi: [10.1053/j.gastro.2013.02.026](https://doi.org/10.1053/j.gastro.2013.02.026) PMID: [23462180](https://pubmed.ncbi.nlm.nih.gov/23462180/)
37. Zhang Y, Burke CW, Ryman KD, Klimstra WB (2007) Identification and characterization of interferon-induced proteins that inhibit alphavirus replication. *J Virol* 81: 11246–11255. PMID: [17686841](https://pubmed.ncbi.nlm.nih.gov/17686841/)
38. Metz P, Dazert E, Ruggieri A, Mazur J, Kaderali L, et al. (2012) Identification of type I and type II interferon-induced effectors controlling hepatitis C virus replication. *Hepatology* 56: 2082–2093. doi: [10.1002/hep.25908](https://doi.org/10.1002/hep.25908) PMID: [22711689](https://pubmed.ncbi.nlm.nih.gov/22711689/)
39. Degrandi D, Kravets E, Konermann C, Beuter-Gunia C, Klumpers V, et al. (2013) Murine guanylate binding protein 2 (mGBP2) controls *Toxoplasma gondii* replication. *Proc Natl Acad Sci U S A* 110: 294–299. doi: [10.1073/pnas.1205635110](https://doi.org/10.1073/pnas.1205635110) PMID: [23248289](https://pubmed.ncbi.nlm.nih.gov/23248289/)
40. Kim BH, Shenoy AR, Kumar P, Das R, Tiwari S, et al. (2011) A family of IFN-gamma-inducible 65-kD GTPases protects against bacterial infection. *Science* 332: 717–721. doi: [10.1126/science.1201711](https://doi.org/10.1126/science.1201711) PMID: [21551061](https://pubmed.ncbi.nlm.nih.gov/21551061/)
41. Martens S, Parvanova I, Zerrahn J, Griffiths G, Schell G, et al. (2005) Disruption of *Toxoplasma gondii* parasitophorous vacuoles by the mouse p47-resistance GTPases. *PLoS Pathog* 1: e24. PMID: [16304607](https://pubmed.ncbi.nlm.nih.gov/16304607/)
42. Tiwari S, Choi HP, Matsuzawa T, Pypaert M, MacMicking JD (2009) Targeting of the GTPase Irgm1 to the phagosomal membrane via PtdIns(3,4)P(2) and PtdIns(3,4,5)P(3) promotes immunity to mycobacteria. *Nat Immunol* 10: 907–917. doi: [10.1038/ni.1759](https://doi.org/10.1038/ni.1759) PMID: [19620982](https://pubmed.ncbi.nlm.nih.gov/19620982/)
43. Yamamoto M, Okuyama M, Ma JS, Kimura T, Kamiyama N, et al. (2012) A cluster of interferon-gamma-inducible p65 GTPases plays a critical role in host defense against *Toxoplasma gondii*. *Immunity* 37: 302–313. PMID: [22795875](https://pubmed.ncbi.nlm.nih.gov/22795875/)
44. Taylor GA, Feng CG, Sher A (2004) p47 GTPases: regulators of immunity to intracellular pathogens. *Nat Rev Immunol* 4: 100–109. PMID: [15040583](https://pubmed.ncbi.nlm.nih.gov/15040583/)
45. Trost M, English L, Lemieux S, Courcelles M, Desjardins M, et al. (2009) The phagosomal proteome in interferon-gamma-activated macrophages. *Immunity* 30: 143–154. doi: [10.1016/j.immuni.2008.11.006](https://doi.org/10.1016/j.immuni.2008.11.006) PMID: [19144319](https://pubmed.ncbi.nlm.nih.gov/19144319/)
46. Sinai AP, Joiner KA (2001) The *Toxoplasma gondii* protein ROP2 mediates host organelle association with the parasitophorous vacuole membrane. *J Cell Biol* 154: 95–108. PMID: [11448993](https://pubmed.ncbi.nlm.nih.gov/11448993/)
47. Matsumoto A, Bessho H, Uehira K, Suda T (1991) Morphological studies of the association of mitochondria with chlamydial inclusions and the fusion of chlamydial inclusions. *J Electron Microsc (Tokyo)* 40: 356–363.
48. Dolezal P, Aili M, Tong J, Jiang JH, Marobbio CM, et al. (2012) *Legionella pneumophila* secretes a mitochondrial carrier protein during infection. *PLoS Pathog* 8: e1002459. doi: [10.1371/journal.ppat.1002459](https://doi.org/10.1371/journal.ppat.1002459) PMID: [22241989](https://pubmed.ncbi.nlm.nih.gov/22241989/)
49. West AP, Brodsky IE, Rahner C, Woo DK, Erdjument-Bromage H, et al. (2011) TLR signalling augments macrophage bactericidal activity through mitochondrial ROS. *Nature* 472: 476–480. doi: [10.1038/nature09973](https://doi.org/10.1038/nature09973) PMID: [21525932](https://pubmed.ncbi.nlm.nih.gov/21525932/)
50. McFadden BA, Purohit S (1977) Itaconate, an isocitrate lyase-directed inhibitor in *Pseudomonas indigofera*. *J Bacteriol* 131: 136–144. PMID: [17593](https://pubmed.ncbi.nlm.nih.gov/17593/)
51. Eylert E, Herrmann V, Jules M, Gillmaier N, Lautner M, et al. (2010) Isotopologue profiling of *Legionella pneumophila*: role of serine and glucose as carbon substrates. *J Biol Chem* 285: 22232–22243. doi: [10.1074/jbc.M110.128678](https://doi.org/10.1074/jbc.M110.128678) PMID: [20442401](https://pubmed.ncbi.nlm.nih.gov/20442401/)

52. Savvi S, Warner DF, Kana BD, McKinney JD, Mizrahi V, et al. (2008) Functional characterization of a vitamin B12-dependent methylmalonyl pathway in *Mycobacterium tuberculosis*: implications for propionate metabolism during growth on fatty acids. *J Bacteriol* 190: 3886–3895. doi: [10.1128/JB.01767-07](https://doi.org/10.1128/JB.01767-07) PMID: [18375549](https://pubmed.ncbi.nlm.nih.gov/18375549/)
53. Pilla DM, Hagar JA, Haldar AK, Mason AK, Degrandi D, et al. (2014) Guanylate binding proteins promote caspase-11-dependent pyroptosis in response to cytoplasmic LPS. *Proc Natl Acad Sci U S A* 111: 6046–6051. doi: [10.1073/pnas.1321700111](https://doi.org/10.1073/pnas.1321700111) PMID: [24715728](https://pubmed.ncbi.nlm.nih.gov/24715728/)
54. Decker T, Muller M, Stockinger S (2005) The yin and yang of type I interferon activity in bacterial infection. *Nat Rev Immunol* 5: 675–687. PMID: [16110316](https://pubmed.ncbi.nlm.nih.gov/16110316/)
55. Mampel J, Spirig T, Weber SS, Haagensen JA, Molin S, et al. (2006) Planktonic replication is essential for biofilm formation by *Legionella pneumophila* in a complex medium under static and dynamic flow conditions. *Appl Environ Microbiol* 72: 2885–2895. PMID: [16597995](https://pubmed.ncbi.nlm.nih.gov/16597995/)
56. Kayagaki N, Warming S, Lamkanfi M, Vande Walle L, Louie S, et al. (2011) Non-canonical inflammatory activation targets caspase-11. *Nature* 479: 117–121. doi: [10.1038/nature10558](https://doi.org/10.1038/nature10558) PMID: [22002608](https://pubmed.ncbi.nlm.nih.gov/22002608/)
57. Newton K, Sun X, Dixit VM (2004) Kinase RIP3 is dispensable for normal NF-kappa Bs, signaling by the B-cell and T-cell receptors, tumor necrosis factor receptor 1, and Toll-like receptors 2 and 4. *Mol Cell Biol* 24: 1464–1469. PMID: [14749364](https://pubmed.ncbi.nlm.nih.gov/14749364/)
58. Jung S, Unutmaz D, Wong P, Sano G, De los Santos K, et al. (2002) In vivo depletion of CD11c+ dendritic cells abrogates priming of CD8+ T cells by exogenous cell-associated antigens. *Immunity* 17: 211–220. PMID: [12196292](https://pubmed.ncbi.nlm.nih.gov/12196292/)
59. Koppe U, Hogner K, Doehn JM, Muller HC, Witzenth M, et al. (2012) *Streptococcus pneumoniae* stimulates a STING- and IFN regulatory factor 3-dependent type I IFN production in macrophages, which regulates RANTES production in macrophages, cocultured alveolar epithelial cells, and mouse lungs. *J Immunol* 188: 811–817. doi: [10.4049/jimmunol.1004143](https://doi.org/10.4049/jimmunol.1004143) PMID: [22156592](https://pubmed.ncbi.nlm.nih.gov/22156592/)
60. Churchill GA (2002) Fundamentals of experimental design for cDNA microarrays. *Nat Genet* 32: 490–495. PMID: [12454643](https://pubmed.ncbi.nlm.nih.gov/12454643/)
61. Davey GM, Wojtasiak M, Proietto AI, Carbone FR, Heath WR, et al. (2010) Cutting edge: priming of CD8 T cell immunity to herpes simplex virus type 1 requires cognate TLR3 expression in vivo. *J Immunol* 184: 2243–2246. doi: [10.4049/jimmunol.0903013](https://doi.org/10.4049/jimmunol.0903013) PMID: [20124105](https://pubmed.ncbi.nlm.nih.gov/20124105/)
62. Ang DK, Ong SY, Brown AS, Hartland EL, van Driel IR (2012) A method for quantifying pulmonary *Legionella pneumophila* infection in mouse lungs by flow cytometry. *BMC Res Notes* 5: 448. doi: [10.1186/1756-0500-5-448](https://doi.org/10.1186/1756-0500-5-448) PMID: [22905869](https://pubmed.ncbi.nlm.nih.gov/22905869/)
63. Weber SS, Ragaz C, Reus K, Nyfeler Y, Hilbi H (2006) *Legionella pneumophila* exploits PI(4)P to anchor secreted effector proteins to the replicative vacuole. *PLoS Pathog* 2: e46. PMID: [16710455](https://pubmed.ncbi.nlm.nih.gov/16710455/)
64. Hoffmann C, Finsel I, Otto A, Pfaffinger G, Rothmeier E, et al. (2013) Functional analysis of novel Rab GTPases identified in the proteome of purified *Legionella*-containing vacuoles from macrophages. *Cell Microbiol* 16: 1034–1052.
65. Ritorto MS, Cook K, Tyagi K, Pedrioli PG, Trost M (2013) Hydrophilic strong anion exchange (hSAX) chromatography for highly orthogonal peptide separation of complex proteomes. *J Proteome Res* 12: 2449–2457. doi: [10.1021/pr301011r](https://doi.org/10.1021/pr301011r) PMID: [23294059](https://pubmed.ncbi.nlm.nih.gov/23294059/)
66. Cox J, Mann M (2008) MaxQuant enables high peptide identification rates, individualized p.p.b.-range mass accuracies and proteome-wide protein quantification. *Nat Biotechnol* 26: 1367–1372. doi: [10.1038/nbt.1511](https://doi.org/10.1038/nbt.1511) PMID: [19029910](https://pubmed.ncbi.nlm.nih.gov/19029910/)
67. Reimand J, Arak T, Vilo J (2011) g:Profiler—a web server for functional interpretation of gene lists (2011 update). *Nucleic Acids Res* 39: W307–315. doi: [10.1093/nar/gkr378](https://doi.org/10.1093/nar/gkr378) PMID: [21646343](https://pubmed.ncbi.nlm.nih.gov/21646343/)
68. Maere S, Heymans K, Kuiper M (2005) BiNGO: a Cytoscape plugin to assess overrepresentation of gene ontology categories in biological networks. *Bioinformatics* 21: 3448–3449. PMID: [15972284](https://pubmed.ncbi.nlm.nih.gov/15972284/)
69. Shannon P, Markiel A, Ozier O, Baliga NS, Wang JT, et al. (2003) Cytoscape: a software environment for integrated models of biomolecular interaction networks. *Genome Res* 13: 2498–2504. PMID: [14597658](https://pubmed.ncbi.nlm.nih.gov/14597658/)
70. Pietzke M, Zasada C, Mudrich S, Kempa S (2014) Decoding the dynamics of cellular metabolism and the action of 3-bromopyruvate and 2-deoxyglucose using pulsed stable isotope-resolved metabolomics. *Cancer Metab* 2: 9. doi: [10.1186/2049-3002-2-9](https://doi.org/10.1186/2049-3002-2-9) PMID: [25035808](https://pubmed.ncbi.nlm.nih.gov/25035808/)
71. Kempa S, Hummel J, Schwemmer T, Pietzke M, Strehmel N, et al. (2009) An automated GCxGC-TOF-MS protocol for batch-wise extraction and alignment of mass isotopomer matrixes from differential ¹³C-labelling experiments: a case study for photoautotrophic-mixotrophic grown *Chlamydomonas reinhardtii* cells. *J Basic Microbiol* 49: 82–91. doi: [10.1002/jobm.200800337](https://doi.org/10.1002/jobm.200800337) PMID: [19206143](https://pubmed.ncbi.nlm.nih.gov/19206143/)