

# The clustering of galaxies in the SDSS-III Baryon Oscillation Spectroscopic Survey: BAO measurement from the LOS-dependent power spectrum of DR12 BOSS galaxies

Héctor Gil-Marín,<sup>1★</sup> Will J. Percival,<sup>1</sup> Antonio J. Cuesta,<sup>2</sup> Joel R. Brownstein,<sup>3</sup> Chia-Hsun Chuang,<sup>4</sup> Shirley Ho,<sup>5</sup> Francisco-Shu Kitaura,<sup>6</sup> Claudia Maraston,<sup>1</sup> Francisco Prada,<sup>4,7,8</sup> Sergio Rodríguez-Torres,<sup>4,7,9</sup> Ashley J. Ross,<sup>10</sup> David J. Schlegel,<sup>11</sup> Donald P. Schneider,<sup>12,13</sup> Daniel Thomas,<sup>1</sup> Jeremy L. Tinker,<sup>14</sup> Rita Tojeiro,<sup>15</sup> Mariana Vargas Magaña<sup>16</sup> and Gong-Bo Zhao<sup>1,17</sup>

*Affiliations are listed at the end of the paper*

Accepted 2016 May 25. Received 2016 May 25; in original form 2015 September 11

## ABSTRACT

We present an anisotropic analysis of the baryon acoustic oscillation (BAO) scale in the twelfth and final data release of the Baryon Oscillation Spectroscopic Survey (BOSS). We independently analyse the LOWZ and CMASS galaxy samples: the LOWZ sample contains 361 762 galaxies with an effective redshift of  $z_{\text{LOWZ}} = 0.32$ ; the CMASS sample consists of 777 202 galaxies with an effective redshift of  $z_{\text{CMASS}} = 0.57$ . We extract the BAO peak position from the monopole power-spectrum moment,  $\alpha_0$ , and from the  $\mu^2$  moment,  $\alpha_2$ , where  $\mu$  is the cosine of the angle to the line of sight. The  $\mu^2$ -moment provides equivalent information to that available in the quadrupole but is simpler to analyse. After applying a reconstruction algorithm to reduce the BAO suppression by bulk motions, we measure the BAO peak position in the monopole and  $\mu^2$ -moment, which are related to radial and angular shifts in scale. We report  $H(z_{\text{LOWZ}})r_s(z_d) = (11.60 \pm 0.60) \times 10^3 \text{ km s}^{-1}$  and  $D_A(z_{\text{LOWZ}})/r_s(z_d) = 6.66 \pm 0.16$  with a cross-correlation coefficient of  $r_{HD_A} = 0.41$ , for the LOWZ sample; and  $H(z_{\text{CMASS}})r_s(z_d) = (14.56 \pm 0.37) \times 10^3 \text{ km s}^{-1}$  and  $D_A(z_{\text{CMASS}})/r_s(z_d) = 9.42 \pm 0.13$  with a cross-correlation coefficient of  $r_{HD_A} = 0.47$ , for the CMASS sample. We demonstrate that our results are not affected by the fiducial cosmology assumed for the analysis. We combine these results with the measurements of the BAO peak position in the monopole and quadrupole correlation function of the same data set (Cuesta et al. 2016, companion paper) and report the consensus values:  $H(z_{\text{LOWZ}})r_s(z_d) = (11.63 \pm 0.69) \times 10^3 \text{ km s}^{-1}$  and  $D_A(z_{\text{LOWZ}})/r_s(z_d) = 6.67 \pm 0.15$  with  $r_{HD_A} = 0.35$  for the LOWZ sample;  $H(z_{\text{CMASS}})r_s(z_d) = (14.67 \pm 0.42) \times 10^3 \text{ km s}^{-1}$  and  $D_A(z_{\text{CMASS}})/r_s(z_d) = 9.47 \pm 0.12$  with  $r_{HD_A} = 0.52$  for the CMASS sample.

**Key words:** galaxies: haloes – cosmological parameters – cosmology: theory – large-scale structure of Universe.

## 1 INTRODUCTION

The baryon acoustic oscillation (BAO) signal in the clustering of galaxies provides a robust route to measure the cosmological expansion rate (Eisenstein et al. 2005). The angular separation of galaxies conveys different cosmological information compared to the radial separation. The observed projection of the BAO-scale in the angular direction depends on the angular diameter distance, while the radial

projection is a function of the Hubble expansion.<sup>1</sup> The anisotropic information can be extracted from measuring the BAO peak position in moments of the correlation function or Fourier-space power spectrum.

The Baryon Oscillation Spectroscopic Survey (BOSS; Dawson et al. 2013), which is part of SDSS-III (Eisenstein et al. 2011), has provided the largest set of numbers of spectroscopic galaxy

\* E-mail: [hector.gil@port.ac.uk](mailto:hector.gil@port.ac.uk)

<sup>1</sup> Negligible evolution is expected over the redshift interval between galaxies separated by the BAO scale.

observations made to date; in this paper we analyse the final, Data Release 12 (DR12; Alam et al. 2015) sample. Our work follows on from measurements made for DR11 samples presented in Anderson et al. (2014) and Beutler et al. (2014). We analyse the low-redshift (LOWZ) and high-redshift (CMASS) samples independently, which were targeted using different algorithms (Reid et al. 2016). DR12 contains approximately 1000 deg<sup>2</sup> more solid angle than DR11, an increase of approximately 12 per cent. Additionally, the methodology adopted to create galaxy catalogues has been improved (Reid et al. 2016; Ross, Percival & Manera 2015), leading to improved understanding, and mitigation, of potential systematic errors.

In this paper, we present a Fourier-space analysis of the line of sight (LOS) dependent clustering, extracting the BAO position. The monopole and quadrupole calculated were analysed to measure the redshift-space distortion (RSD) signal in Gil-Marín et al. (2016, hereafter Paper I). In this paper, we present a new method for fitting the  $\mu^2$ -moment of the power spectrum rather than the quadrupole to obtain the anisotropic information. As the  $\mu^2$ -moment is a simple linear combination of monopole and quadrupole, this change is lossless. Fitting to the  $\mu^2$ -moment allows the use of the same equations as for the monopole and quadrupole (with different parameters) simplifying the modelling, and particularly the way in which we can isolate BAO information from the broad-band signal. Note that using the  $\mu^2$ -moment instead of the quadrupole is a mere fitting technique that simplifies the identification of the BAO peak in the higher order multipoles of the power spectrum. However, one can still use the estimators used in Paper I to compute the monopole and quadrupole, and reconvert them into monopole and  $\mu^2$ -moment. Since the  $\mu^2$ -moment is just a linear combination of the monopole and quadrupole, the result is identically the same to measure the  $\mu^2$ -moment using the estimator described in Bianchi et al. (2015).

The outline of our paper is as follows: in Section 2, we introduce the data, the mocks used to compute the covariance matrices and test for systematics, and briefly describe the reconstruction technique. In Section 3, we present the formalism used to calculate the monopole and  $\mu^2$ -moments. The method applied to fit the BAO is described in Section 4. The measurements of the BAO peak position in the DR12 BOSS galaxies are presented in Section 6, for both pre- and post-reconstructed catalogues. In Section 5, we test for potential systematics of the model and of the fitting process using the post-reconstructed mocks. Finally Section 7 presents the conclusions of this paper.

## 2 DATA AND MOCKS

### 2.1 The SDSS III BOSS data

As part of the Sloan Digital Sky Survey III (Eisenstein et al. 2011) the Baryon Oscillations Spectroscopic Survey (BOSS) (Dawson et al. 2013) measured spectroscopic redshifts (Bolton et al. 2012; Smee et al. 2013) for more than one million galaxies and over 200 000 quasars. The galaxies were selected from multicolour SDSS imaging (Fukugita et al. 1996; Gunn et al. 1998; Smith et al. 2002; Gunn et al. 2006; Doi et al. 2010) focusing on the redshift range of  $0.15 \leq z \leq 0.70$ . The galaxy survey used two primary target algorithms, selecting samples called LOWZ, with 361 762 galaxies in the final data release DR12 (Alam et al. 2015) between  $0.15 \leq z \leq 0.43$  and CMASS, with 777 202 galaxies in DR12 between  $0.43 \leq z \leq 0.70$ . The full targeting algorithms used and the method for calculating the galaxy and random catalogues are presented in Reid et al. (2016). The samples jointly cover a large cosmic volume ( $V_{\text{eff}} = 7.4 \text{ Gpc}^3$ ) with a number density of galaxies that ensures

that the shot noise does not dominate at BAO scales at the relevant redshifts. Obviously in the edges of the redshift-bin of the LOWZ and CMASS samples the shot noise has a more relevant role than close to the centre of the redshift-bin, just because of the difference in the number density of galaxies. However, the power-spectrum signal is dominated by those galaxies of the centre of the bin, which is less affected by shot noise. Full details of the catalogues are provided in Reid et al. (2016).

In order to correct the several observational artefacts in the catalogues, the CMASS and LOWZ samples incorporate a set of weights: a redshift failure weight,  $w_{\text{rf}}$ , a fibre collision weight,  $w_{\text{fc}}$ , and a systematic weight,  $w_{\text{sys}}$  (CMASS only), which combines a seeing condition weight and a stellar weight (Ross et al. 2012; Anderson et al. 2014; Reid et al. 2016). Hence, each galaxy target contributes to our estimate of the target galaxy density field by

$$w_{\text{c}} = w_{\text{sys}}(w_{\text{rf}} + w_{\text{fc}} - 1). \quad (1)$$

The redshift failure weights account for galaxies that have been observed, but whose redshifts have not been measured: nearby galaxies, which are approximated as being ‘equivalent’, are up-weighted to remove any bias in the resulting field. The fibre collision weight similarly corrects for galaxies that could not be observed as there was another target within 62 arcsec, a physical limitation of the spectrograph [see Ross et al. (2012) for details]. The systematic weight accounts for fluctuations in the target density caused by changes in the observational efficiency. This effect is only present for the CMASS sample, which relies on deeper imaging data; such a weight is not required for the brighter LOWZ sample (Tojeiro et al. 2014).

Additionally, we adopt the standard weight to balance regions of high and low density (Feldman, Kaiser & Peacock 1994; Beutler et al. 2014),

$$w_{\text{FKP}}(\mathbf{r}) = \frac{w_{\text{sys}}(\mathbf{r})}{w_{\text{sys}}(\mathbf{r}) + w_{\text{c}}(\mathbf{r})n(\mathbf{r})P_0}, \quad (2)$$

where  $n$  is the mean number density of galaxies and  $P_0$  is the amplitude of the galaxy power spectrum at the scale where the error is minimized. We assume  $P_0 = 10\,000 h^{-3} \text{ Mpc}^3$ , which corresponds to the amplitude of the power spectrum at scales  $k \sim 0.10 h \text{ Mpc}^{-1}$  (Reid et al. 2016).

### 2.2 The mock survey catalogues

Mock samples are a key component in the analysis of precision cosmological data provided by galaxy surveys. They are a fundamental requirement to test and analyse the large-scale structure and they help determine systematic errors on the measurements. Most of the relevant large-scale physics is captured by approximate methods, so we do not necessarily need to base mock catalogues on full  $N$ -body cosmological simulations; small numbers of  $N$ -body simulations can instead be used to calibrate a more efficient scheme. In this paper, we use mocks created by two different approaches: MultiDark-Patchy BOSS DR12 mocks<sup>2</sup> (hereafter MD-PATCHY mocks) (Kitaura et al. 2016, companion paper) and Quick-Particle-Mesh mocks (White, Tinker & McBride 2014), hereafter QPM mocks. Both schemes incorporate observational effects including the survey selection window, veto mask and fibre collisions. In Paper I, we demonstrated that the covariance matrices obtained using these two types of mocks were similar and yielded

<sup>2</sup> <http://data.sdss3.org/datamodel/index-files.html>

**Table 1.** Cosmological parameters chosen for the fiducial cosmology, for the MD-PATCHY cosmology and QPM cosmology.

	$\Omega_m$	$\Omega_\Lambda$	$\Omega_b h^2$	$h$	$n_s$
Fid.	0.31	0.69	0.023 569	0.7	0.9624
MD-PATCHY	0.307 115	0.692 885	0.022 045	0.6777	0.96
QPM	0.29	0.71	0.022 442	0.7	0.97

similar errors-bars and cross covariance parameters (see figs 3 and 13 in Paper I). Because of this, in this paper we perform two parallel analyses of the data using MD-PATCHY and QPM mocks. Since the measurements and the errors coming from the two sets of mocks are very similar, we average both the measurements and errors in order to obtain a single value for each parameter. Since the covariance matrix is estimated from a set of mocks, its inverse is biased due to the limited number of realizations. We account for this effect by applying the correction proposed by Hartlap, Simon & Schneider (2007). In addition to this scaling, we have to propagate the error in the covariance matrix to the error on the estimated parameters. We can do this by scaling the variance for each parameter by the factor of equation (18) of Percival et al. (2014). The corrections to the error bars described above are small (<2 per cent for QPM and <1 per cent for MD-PATCHY), but are included in all the error bars quoted in this paper.

### 2.3 Fiducial cosmology

In this paper, we analyse the data assuming a fiducial cosmological model. The values of this cosmological model, as well as the cosmologies of QPM and MD-PATCHY mocks, are presented in Table 1.

In Section 5 we show that the arbitrary choice of cosmology has a systematic effect of  $\lesssim 0.3$  per cent on the peak position values obtained from the QPM mocks. We have checked the effect of this systematic error by adding it in quadrature along with the statistical errors for the data. We have found that this represents just a 5 per cent increase of the size of the total error-bars budget for the case of the position of the BAO peak in the isotropic post-recon signal in the CMASS sample, and much less in the rest of the variables. Because of this we consider this effect as sub-dominant and we will not consider it in the results of this paper. We present a further discussion of this point later in Section 5.

### 2.4 Reconstruction

The initial BAO signal in the clustering is damped by the comoving motions of galaxies, potentially reducing the fidelity of BAO measurements. Using the observed density field, we can model the galaxy motions, and move the overdensity back to its ‘original’ position, recovering a fraction of this signal (Eisenstein et al. 2007). The fraction of the signal recovered is dependent on the density of galaxies, which limits how well the displacement field can be determined (Burden et al. 2014). RSDs complicate the implementation of this method, as they produce a LOS-dependent distortion that has to be included when estimating the displacement field. In Fourier-space, an iterative method can be used to compensate for this effect (Burden, Percival & Howlett 2015), where a correction is computed at each step using the prior estimate of displacements. An alternative approach is to grid the galaxy overdensity field, and determine RSD and displacements using a finite-difference routine based on the values of the overdensities at grid-points (Padmanabhan, White & Cohn 2009). Both methods provide consistent results; we use the

finite-difference method here. We will make measurements both before applying this algorithm (pre-recon), and after (post-recon).

## 3 POWER-SPECTRUM ESTIMATOR

We build the galaxy power-spectrum multipole estimator by defining the function

$$F(\mathbf{r}) = \frac{w_{\text{FKP}}(\mathbf{r})}{I_2^{1/2}} [w_c(\mathbf{r})n(\mathbf{r}) - \alpha_{\text{ran}}n_s(\mathbf{r})], \quad (3)$$

where  $n$  and  $n_s$  are, respectively, the observed number density of galaxies and the number density of a synthetic catalogue Poisson sampled with the same mask and selection function as the survey with no other cosmological correlations. The functions  $w_c$  and  $w_{\text{FKP}}$  were defined in equations (1) and (2), respectively. The factor  $\alpha_{\text{ran}}$  is the ratio between the weighted number of observed galaxies over the random catalogue,  $\alpha_{\text{ran}} \equiv \sum_i^{N_{\text{gal}}} w_c/N_s$ , where  $N_s$  denotes the number of objects in the synthetic catalogue and  $N_{\text{gal}}$  the number of galaxies in the real catalogue. The factor  $I_2$  normalizes the amplitude of the observed power in accordance with its definition in a universe with no survey selection.

We compute the power-spectrum multipoles using the implementation of the Yamamoto estimator (Yamamoto et al. 2006) presented in Bianchi et al. (2015), which is based on using multiple Fast Fourier Transforms, keeping the relevant LOS information by approximating the LOS of each pair of galaxies with the LOS of one of the two galaxies (see section 3 of Paper I for more details on the algorithm used). This is a reliable approximation on the scales of interest, which clearly improves on assuming a single fixed LOS for the whole survey for the quadrupole, but will eventually break down at large scales and high order multipoles (Yoo & Seljak 2015; Samushia, Branchini & Percival 2015).

We use a random catalogue of number density of  $\bar{n}_s(\mathbf{r}) = \alpha_{\text{ran}}^{-1}\bar{n}(\mathbf{r})$ , with  $\alpha_{\text{ran}}^{-1} \simeq 50$ , for pre-recon, and  $\alpha_{\text{ran}}^{-1} \simeq 20$  for post-recon catalogues. We place the LOWZ and CMASS galaxy samples on  $1024^3$  quadrangular grids, of a box of side  $L_b = 2300 h^{-1}\text{Mpc}$  for the LOWZ galaxies, and  $L_b = 3500 h^{-1}\text{Mpc}$  to fit the CMASS galaxies. This approach corresponds to a grid-cell resolution of  $3.42 h^{-1}\text{Mpc}$  for the CMASS galaxies and  $2.25 h^{-1}\text{Mpc}$  for the LOWZ galaxies. The fundamental wavelengths are therefore  $k_f = 1.795 \times 10^{-3} h\text{Mpc}^{-1}$  and  $k_f = 2.732 \times 10^{-3} h\text{Mpc}^{-1}$  for the CMASS and LOWZ galaxies, respectively. We apply the Cloud-in-Cells scheme (CiC) to associate galaxies with grid-cells, and bin the power-spectrum  $k$ -modes in 60 bins between the fundamental frequency  $k_f$  and a maximum frequency of  $k_M = 0.33 h\text{Mpc}$ , with width  $\Delta \log_{10} k = [\log_{10}(k_M) - \log_{10}(k_f)]/60$ .

We limit the scales fitted as follows: our procedure for determining the largest scale for the fitting process is based on limiting the impact of the systematic weights, and is presented in appendix A of Paper I. We limit scales to  $k > 0.02 h\text{Mpc}^{-1}$  for the monopole and  $k > 0.04 h\text{Mpc}^{-1}$  for the quadrupole. The smaller scale used for the BAO peak determination is  $k_{\text{max}} = 0.3 h\text{Mpc}^{-1}$ , as for smaller scales the BAO information is quite limited.

In this paper, we work with the combined north and south samples, NGC+SGC, for all the power-spectrum multipoles. This combination is performed by averaging both NGC and SGC components weighted by their area,  $P_{\text{NGC+SGC}} = (P_{\text{NGC}}A_{\text{NGC}} + P_{\text{SGC}}A_{\text{SGC}})/(A_{\text{NGC}} + A_{\text{SGC}})$ , both for LOWZ and CMASS samples. The values of the areas are:  $A_{\text{NGC}}^{\text{LOWZ}} = 5836 \text{ deg}^2$ ,  $A_{\text{SGC}}^{\text{LOWZ}} = 2501 \text{ deg}^2$ ,  $A_{\text{NGC}}^{\text{CMASS}} = 6851 \text{ deg}^2$  and  $A_{\text{SGC}}^{\text{CMASS}} = 2525 \text{ deg}^2$ .

## 4 FITTING THE POWER-SPECTRUM MOMENTS

### 4.1 Modelling the power-spectrum moments

We model the power-spectrum multipoles in order to measure the position of the BAO features and marginalize over the broadband information. To reduce the complexity of the fits, we choose to fit the monopole and the  $\mu^2$ -moment, defined as  $P^{(\mu^2)} \equiv 2/5P^{(2)}(k) + P^{(0)}(k)$ , rather than the monopole and quadrupole. As the pair monopole– $\mu^2$ -moment are a linear transformation of the pair monopole–quadrupole, the information content is the same in both.  $P^{(\mu^2)}$  has the property that, in linear theory, the shape is the same as  $P^{(0)}$ , and we can therefore use the same modelling procedure for both, albeit with different free parameters describing the deviations from linear theory to account for LOS dependent effects.

To create the model moments, we start by computing the linear power spectrum at a given cosmology,  $P_{\text{lin}}$ , which we generate using CAMB (Lewis, Challinor & Lasenby 2000). The linear power spectrum was separated into two components, one containing the BAO oscillations,  $O_{\text{lin}}$ , and a smooth component,  $P_{\text{lin,sm}}$ ;  $P_{\text{lin}}(k) = O_{\text{lin}}(k)P_{\text{lin,sm}}(k)$ . This separation was performed using the same method applied to the data, but employing an analytic model for the BAO and smooth model based on the fitting formulae of Eisenstein & Hu (1998). The position of the BAO peak is described by  $\alpha$ , which parametrizes the features of the oscillations as a function of  $k$  in the  $O_{\text{lin}}$ -function,  $O_{\text{lin}}(k/\alpha)$ . We use a superscript ‘(0)’ for the monopole and ‘(2)’ for the value measured from the  $\mu^2$ -moment. We adopt the model described in Anderson et al. (2014) to account for deviations in the smooth fit away from this linear model. The full model is

$$P_{\text{model}}(k; \alpha) = P_{\text{model,sm}}(k) \left\{ 1 + [O_{\text{lin}}(k/\alpha) - 1] e^{-\frac{1}{2}k^2 \Sigma_{\text{nl}}^2} \right\}, \quad (4)$$

where  $P_{\text{model,sm}}$  is a phenomenological parametrization of the non-linear power-spectrum monopole with no-BAO,

$$P_{\text{model,sm}}(k) = B^2 P_{\text{lin,sm}}(k) + A_1 k + A_2 + \frac{A_3}{k} + \frac{A_4}{k^2} + \frac{A_5}{k^3}, \quad (5)$$

and  $B$ ,  $A_i$  and  $\Sigma_{\text{nl}}$  are free parameters that account for RSDs and nonlinearities. Together with  $\alpha$ , there are eight free parameters for each model. These parameters are allowed to be different in the fits to the monopole and  $\mu^2$  moment and we adopt superscripts ‘(0)’ for the monopole and ‘(2)’ for the fit to the  $\mu^2$ -moment, where appropriate.

The survey window acts as a convolution of the power-spectrum moments, smoothing the true power spectrum to produce that observed. As the survey window affects the BAO, it cannot be described by a variation of the free parameters described above. To include the window effects, we follow the approach described in section 5.4 of Paper I, producing matrices to account for these effects through a discrete convolution

$$P_{\text{win}}^{(0)}(k_i) = \sum_j \mathcal{W}_{ij}^{00} P_{\text{model}}^{(0)}(k_j) + \sum_j \mathcal{W}_{ij}^{02} P_{\text{model}}^{(2)}(k_j),$$

$$P_{\text{win}}^{(2)}(k_i) = \sum_j \mathcal{W}_{ij}^{20} P_{\text{model}}^{(0)}(k_j) + \sum_j \mathcal{W}_{ij}^{22} P_{\text{model}}^{(2)}(k_j), \quad (6)$$

where,  $\mathcal{W}_{ij}^{mn}$  are the elements of the window-survey matrix,  $P_{\text{model}}^{(n)}$  are the pre-masked models described by equation (4), and  $P_{\text{win}}^{(l)}$  are the final products for the observed moments. Details of how the  $\mathcal{W}_{ij}^{mn}$  elements are estimated can be found in equation (14) of Paper I. This model is able to fit both pre- and post-recon power-

spectrum moments with residuals that are of far lower significance than the BAO signal (see Section 5).

### 4.2 Finding the best-fitting parameters

The monopole and  $\mu^2$ -moment are assumed to be drawn from a multivariate Gaussian distribution, whose covariance can be computed using the galaxy mocks described in Section 2.2. For the pre-recon analysis we consider two different sets of mocks, QPM and MD-PATCHY, whereas for the post-recon analysis we only use QPM mocks. For details about the computation of the covariance matrices we refer the reader to section 6.1 of Paper I.

Equation (4) includes eight free parameters for each of the two power-spectrum moments, so we have 16 free parameters in total to be fitted to each set of measurements. To investigate this parameter space we use a bespoke Markov-Chain Monte Carlo (MCMC) routine, run for each fit for  $10^8$  steps split into 10 sub-chains, which satisfies the convergence check that each sub-chain gives consistent results. Each chain was started close to the best-fitting locations found using a downhill simplex routine, and a burn-in of  $10^5$  steps was removed from each. To reduce the computational burden, each chain was thinned by a factor  $10^2$  before measuring marginalized parameters and errors. We only consider the interval  $0.8 < \alpha_i < 1.2$  for  $\alpha_0$  and  $\alpha_2$  to avoid unphysical solutions and to reduce the convergence time of the MCMC routine. This is a very conservative prior which is never hit by the MCMC routine, and that happens to be at more than  $5\sigma$  of the final results. Due to noise, secondary maxima where the BAO signal is located within the large-scale, noisy, part of the power spectrum, can cause a mobility issue for the chains. Given that the data storage and analysis are computationally expensive, we choose to run relatively long chains, which are less affected by the secondary maxima, and thin them to allow the subsequent analysis to be performed quickly.

The correlation among the parameters of interest,  $\alpha_0$  and  $\alpha_2$  is shown later in Fig. 2. The correlation among the  $\alpha$ -parameters and the rest of nuisance parameters,  $B$ ,  $A_i$  and  $\Sigma_{\text{nl}}$ , is found to be very weak or consistent with 0 ( $|r| < 0.10$ ). The strongest is a weak correlation of  $r \simeq 0.27$  between  $\alpha_0$  and  $\Sigma_{\text{nl}}$ ; and between  $\alpha_2$  and  $\Sigma_{\text{nl}}$  for the CMASS sample; and  $r \simeq -0.30$  between  $\alpha_0$  and  $\Sigma_{\text{nl}}$ ; and between  $\alpha_2$  and  $\Sigma_{\text{nl}}$  for the LOWZ sample.

### 4.3 Interpreting the measured BAO scales

Our BAO scale measurements are given by  $\alpha_0$  and  $\alpha_2$ , and their covariance. To translate these parameters into easily-to-model cosmological measurements, we adopt the standard definitions of the Alcock–Paczynski (AP) parameters,

$$\alpha_{\parallel} \equiv \frac{H^{\text{fid}}(z) r_s^{\text{fid}}(z_d)}{H(z) r_s(z_d)}; \quad \alpha_{\perp} \equiv \frac{D_A(z) r_s^{\text{fid}}(z_d)}{D_A^{\text{fid}}(z) r_s(z_d)}, \quad (7)$$

Our measurements of  $\alpha_0$  and  $\alpha_2$  each provide degenerate measurement of  $\alpha_{\parallel}$  and  $\alpha_{\perp}$ . Ross et al. (2015) showed that we should expect a degeneracy of the kind,

$$\alpha_i^{m+n} = \alpha_{\parallel}^m \alpha_{\perp}^n, \quad (8)$$

where for the post-recon monopole (and RSD removal),  $m = 1/3$  and  $n = 2/3$ , and for the  $\mu^2$ -moment,  $m = 3/5$  and  $n = 2/5$ . Our window function convolution accounts for any deviations from these ideal solutions caused by the survey geometry. Thus, the AP

**Table 2.** Measured BAO peak positions  $\alpha_0$  and  $\alpha_2$  recovered from the mocks and presented in terms of their expected values. These results have been obtained from the QPM post-recon mocks for the LOWZ and CMASS samples, for different assumptions of cosmologies and different BAO models. We show the difference between the measured and the expected BAO position in the monopole,  $\alpha_0 - \alpha_0^{\text{exp}}$  and in the  $\mu^2$ -moment,  $\alpha_2 - \alpha_2^{\text{exp}}$ . For reference the expected BAO peak position for each cosmology and BAO model for both moments are listed. Two different cases are analysed:  $\alpha(\tilde{P})$ , where the BAO peak position is obtained from the fit to the mean of 1000 mocks; and  $\tilde{\alpha}(P)$ , where the BAO peak position is obtained from the mean of the BAO peak position fits to each individual mock. The former statistic is only sensitive to the systematic errors of the model, whereas the latter includes noise-dependent effects.

Statistic	Sample	BAO model	Cosmology	$\alpha_0 - \alpha_0^{\text{exp}}$	$\alpha_0^{\text{exp}}$	$\alpha_2 - \alpha_2^{\text{exp}}$	$\alpha_2^{\text{exp}}$
$\alpha(\tilde{P})$	LOWZ	$\Omega_b h^2 = 0.023569$	$\Omega_m = 0.29$	$0.00137 \pm 0.00074$	0.976687	$0.0022 \pm 0.0010$	0.976687
			$\Omega_m = 0.31$	$0.00061 \pm 0.00048$	0.982765	$0.00103 \pm 0.00066$	0.984004
		$\Omega_b h^2 = 0.022442$	$\Omega_m = 0.29$	$0.00137 \pm 0.00048$	1.000000	$0.00175 \pm 0.00068$	1.000000
			$\Omega_m = 0.31$	$0.00131 \pm 0.00050$	1.006223	$0.00158 \pm 0.00069$	1.007491
	CMASS	$\Omega_b h^2 = 0.023569$	$\Omega_m = 0.29$	$-0.00253 \pm 0.00031$	0.976687	$-0.00257 \pm 0.00044$	0.976687
			$\Omega_m = 0.31$	$-0.00274 \pm 0.00031$	0.986808	$-0.00290 \pm 0.00044$	0.988829
		$\Omega_b h^2 = 0.022442$	$\Omega_m = 0.29$	$-0.00098 \pm 0.00032$	1.000000	$-0.00102 \pm 0.00044$	1.000000
			$\Omega_m = 0.31$	$-0.00127 \pm 0.00032$	1.010363	$-0.00147 \pm 0.00045$	1.012431
$\tilde{\alpha}(P)$	LOWZ	$\Omega_b h^2 = 0.023569$	$\Omega_m = 0.29$	$0.00173 \pm 0.00050$	0.976687	$0.00227 \pm 0.00071$	0.976687
			$\Omega_m = 0.31$	$0.00204 \pm 0.00051$	0.982765	$0.00254 \pm 0.00073$	0.984004
		$\Omega_b h^2 = 0.022442$	$\Omega_m = 0.29$	$0.00153 \pm 0.00051$	1.000000	$0.00140 \pm 0.00072$	1.000000
			$\Omega_m = 0.31$	$0.00177 \pm 0.00052$	1.006223	$0.00155 \pm 0.00073$	1.007491
	CMASS	$\Omega_b h^2 = 0.023569$	$\Omega_m = 0.29$	$-0.00243 \pm 0.00032$	0.976687	$-0.00244 \pm 0.00045$	0.976687
			$\Omega_m = 0.31$	$-0.00224 \pm 0.00033$	0.986808	$-0.00209 \pm 0.00045$	0.988829
		$\Omega_b h^2 = 0.022442$	$\Omega_m = 0.29$	$-0.00135 \pm 0.00033$	1.000000	$-0.00147 \pm 0.00045$	1.000000
			$\Omega_m = 0.31$	$-0.00112 \pm 0.00034$	1.010363	$-0.00116 \pm 0.00046$	1.012431

parameters,  $\alpha_{\parallel}$  and  $\alpha_{\perp}$  can be written in terms of the position of the BAO peak in the monopole and  $\mu^2$ -moment,

$$\alpha_{\parallel} = \alpha_0^{-3/2} \alpha_2^{5/2}; \quad \alpha_{\perp} = \alpha_0^{9/4} \alpha_2^{-5/4}. \quad (9)$$

Using these expressions we relate the BAO peak position in the monopole and  $\mu^2$ -moment to the Hubble parameter and the angular distance as,

$$H(z)r_s(z_d) = [H(z)r_s(z_d)]^{\text{fid}} \alpha_0^{3/2} \alpha_2^{-5/2} \quad (10)$$

and

$$D_A(z)/r_s(z_d) = [D_A(z)/r_s(z_d)]^{\text{fid}} \alpha_0^{9/4} \alpha_2^{-5/4}. \quad (11)$$

For the fiducial cosmological model of Table 1,  $[H(z_{\text{LOWZ}})r_s(z_d)]^{\text{fid}} = 11.914 \times 10^3 \text{ km s}^{-1}$  and  $[D_A(z_{\text{LOWZ}})/r_s(z_d)]^{\text{fid}} = 6.667$  for the LOWZ sample and  $[H(z_{\text{CMASS}})r_s(z_d)]^{\text{fid}} = 13.827 \times 10^3 \text{ km s}^{-1}$  and  $[D_A(z_{\text{CMASS}})/r_s(z_d)]^{\text{fid}} = 9.330$  for the CMASS sample. In this fiducial cosmological model we have  $r_s(z_d) = 143.70 \text{ Mpc}$ . We report these parameters and its correlation coefficient as a final result.

## 5 TESTS ON GALAXY MOCKS

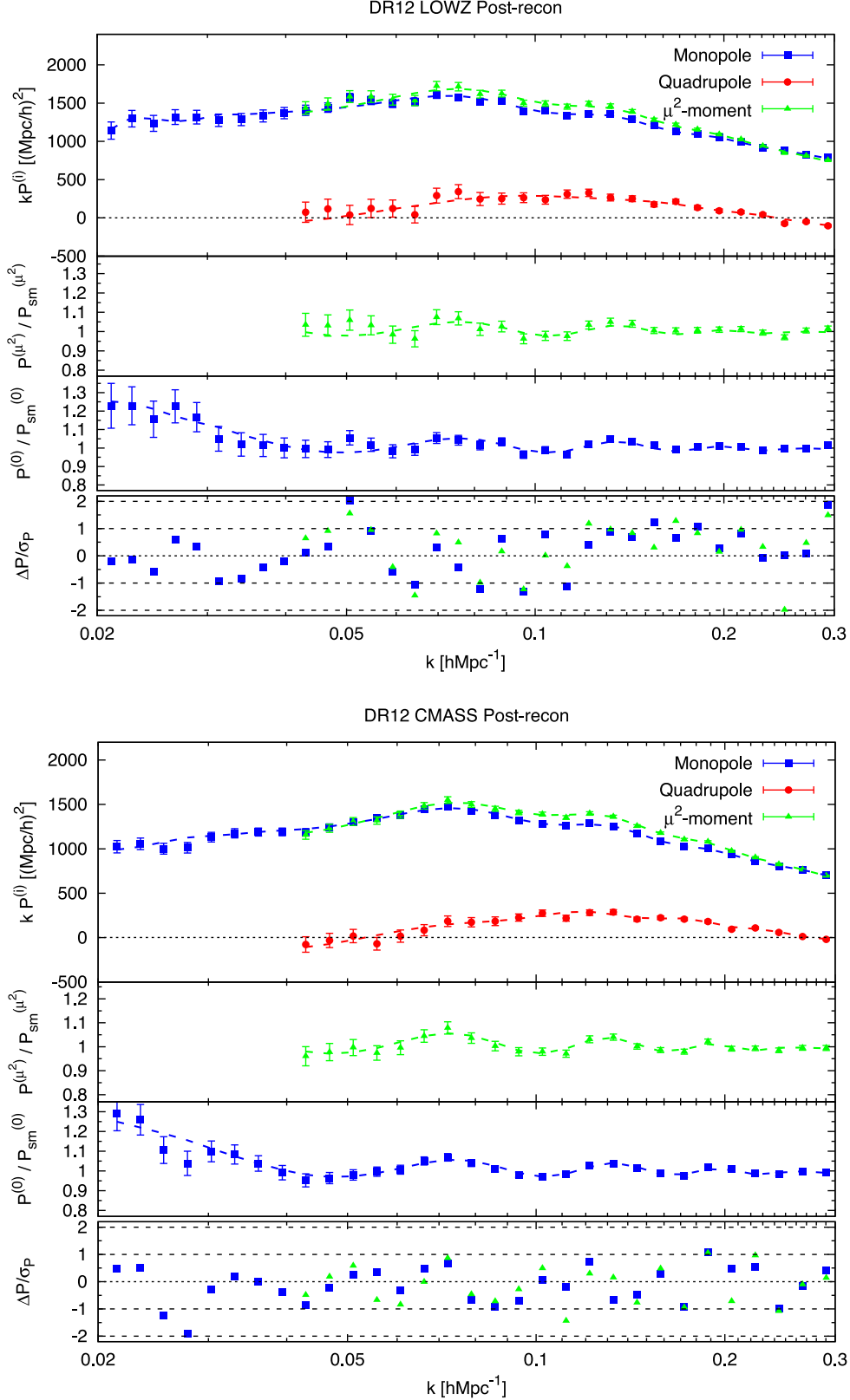
In this section we test for potential systematics in the BAO model as well as those associated with the fitting algorithm. We focus on QPM post-recon mocks, which we analyse assuming using two different cosmologies (with  $\Omega_m = 0.29$  or  $\Omega_m = 0.31$ ) and two different BAO models (with  $\Omega_b h^2 = 0.022442$  or  $\Omega_b h^2 = 0.023569$ ). For the four different combinations of  $\Omega_m$  and  $\Omega_b h^2$ , we test that we are able to recover the expected BAO shifts positions even when the cosmology or the BAO model assumed for analysing the mocks does not necessarily match their true values. In the case where both the cosmology and the BAO model assumed match those values from the mocks, the expected values for  $\alpha_0$  and  $\alpha_2$  are 1. However, when either the cosmology or the BAO model assumed differ from those of the mocks, we expect that the values for  $\alpha_0$  and  $\alpha_2$  will differ from 1, with the expected values given by equations (7). We will refer to these expected BAO peak position as  $\alpha_0^{\text{exp}}$  and  $\alpha_2^{\text{exp}}$ .

We start by computing the best-fitting values of  $\alpha_0$  and  $\alpha_2$  for the average monopole and  $\mu^2$ -moment over the 1000 realizations of the mocks, for the four different combination of  $\Omega_m$  and  $\Omega_b h^2$  (labelled  $\alpha(\tilde{P})$  in Table 2). By averaging the power-spectrum moment over the realizations we reduce the noise-dependent systematic errors to a negligible level compared to the systematic errors of the model. Therefore, when we compare the obtained  $\alpha_i$  with its expected value we are exclusively testing the potential systematics of the BAO model itself. Given the results of Table 2 associated with the statistic  $\alpha(\tilde{P})$  we can state that the BAO model is able to reproduce the expected value of the BAO peak position in both the monopole and  $\mu^2$ -moment with  $<0.30$  per cent accuracy.

In order to test for noise-dependent systematic errors we have also computed expected value for  $\alpha_0$  and  $\alpha_2$  for each mock and average among them. Unlike the former case, now we do not cancel the noise-dependent systematic associated with each individual fit. The results are listed in Table 2, labelled  $\tilde{\alpha}(P)$  (i.e. the average of the BAO peak position of the mocks). For some values of the cosmology and BAO model we observe that the deviation between the expected and the recovered values has significantly changed with respect to fitting the average power from the mocks,  $\alpha(\tilde{P})$ . This result is due to the remaining statistical noise associated with each individual mock fit. In general, we are able to recover the BAO peak position in both the monopole and  $\mu^2$ -moment with  $\leq 0.25$  per cent accuracy. These values are significantly below the statistical errors on the measurements, in a similar way as we have seen for the  $\alpha(\tilde{P})$  statistic. We therefore conclude that the potential systematic errors, both noise-dependent and model-dependent, do not play any important role in the BAO peak position estimation in the monopole or  $\mu^2$ -moment, where the statistical errors of the survey dominate. We therefore do not apply any correction to the obtained results from the data.

## 6 RESULTS

Fig. 1 presents the post-recon power-spectrum monopole (blue squares), quadrupole (blue circles) and  $\mu^2$ -moment (green



**Figure 1.** The measured LOWZ (top panel) and CMASS (bottom panel) DR12 post-recon, monopole (blue squares), quadrupole (red circles) and  $\mu^2$ -moment (green triangles) power spectra. For all the cases the measurements correspond to a combination of the northern and southern galaxy caps according to their effective areas as described in Section 3. The error-bars are calculated from the dispersion of measurements using the QPM mocks. The red, blue and green lines correspond to the best-fitting model of equation (4) with the BAO peak position as a free parameter. Within each panel we also present the power-spectrum monopole and  $\mu^2$ -moment divided by the smooth power spectrum calculated in our fit to the data. For the monopole and  $\mu^2$ -moment we see how the model is able to capture the BAO features observed in the data. For clarity, the bottom sub-panels show the residuals between the measurement and the model,  $\Delta P \equiv P^{\text{model}} - P^{\text{data}}$ , divided by the  $1\sigma$  error of the data. The black dashed lines marks the  $1\sigma$  and  $2\sigma$  deviations.

**Table 3.** Marginalized measurements of the BAO peak position for the monopole,  $\alpha_0$ , and for the  $\mu^2$ -moment,  $\alpha_2$ , in the LOWZ and CMASS sample of the DR12 data as indicated. Also listed are their cross-correlation coefficient,  $r_{02}$ . For the post-recon samples we also show the derived AP parameters,  $\alpha_{\parallel}$  and  $\alpha_{\perp}$  with their corresponding cross-correlation coefficient,  $r_{\parallel\perp}$ . We include the value of the best-fitting  $\chi^2$  divided by the number of degrees of freedom (dof). The different rows are for the pre and post-recon catalogues, when both QPM and MD-PATCHY covariances are used.

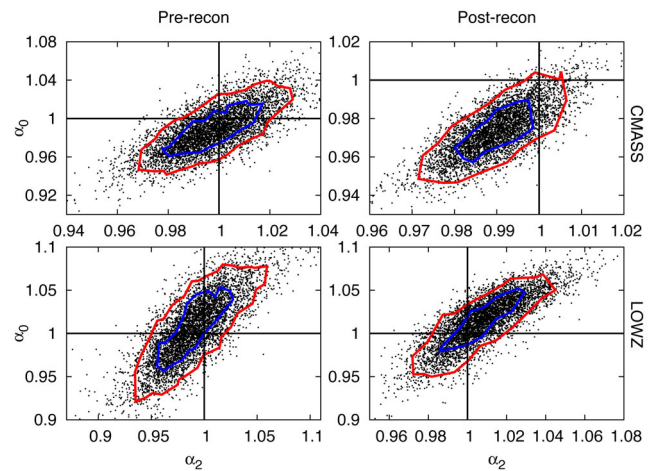
Sample	Catalogue	Covariance	$\alpha_0$	$\alpha_2$	$r_{02}$	$\alpha_{\parallel}$	$\alpha_{\perp}$	$r_{\parallel\perp}$	$\chi^2/\text{dof}$
LOWZ	Pre-recon	MD-PATCHY	$0.998 \pm 0.028$	$1.019 \pm 0.037$	0.78	$1.053 \pm 0.067$	$0.974 \pm 0.039$	-0.33	37.16/43
		QPM	$0.989 \pm 0.031$	$1.005 \pm 0.039$	0.78	$1.031 \pm 0.069$	$0.971 \pm 0.042$	-0.32	35.72/43
	Post-recon	MD-PATCHY	$1.009 \pm 0.017$	$1.018 \pm 0.027$	0.81	$1.032 \pm 0.050$	$0.999 \pm 0.023$	-0.40	59.53/43
		QPM	$1.009 \pm 0.019$	$1.016 \pm 0.029$	0.81	$1.027 \pm 0.053$	$1.001 \pm 0.025$	-0.42	55.57/43
CMASS	Pre-recon	MD-PATCHY	$1.002 \pm 0.015$	$0.996 \pm 0.024$	0.75	$0.987 \pm 0.045$	$1.010 \pm 0.023$	-0.52	43.73/38
		QPM	$0.997 \pm 0.016$	$0.988 \pm 0.024$	0.73	$0.974 \pm 0.045$	$1.010 \pm 0.025$	-0.52	38.48/38
	Post-recon	MD-PATCHY	$0.9895 \pm 0.0091$	$0.974 \pm 0.013$	0.75	$0.950 \pm 0.024$	$1.010 \pm 0.014$	-0.43	49.00/38
		QPM	$0.9899 \pm 0.0088$	$0.974 \pm 0.014$	0.74	$0.950 \pm 0.025$	$1.010 \pm 0.014$	-0.51	37.24/38

triangles), for the LOWZ and CMASS samples of the DR12 data measurements (top and bottom panels as labelled) from the combination of the NGC and SCG. The coloured lines show the best-fitting model given by equation (4) with the BAO peak position for the monopole ( $\alpha_0$ ) and for the  $\mu^2$ -moment ( $\alpha_2$ ). For simplicity we only show the best-fitting model according to the covariance matrix extracted from the QPM mocks. We will later show in Table 3 the results from the data assuming both QPM and MD-PATCHY covariance. The model for the quadrupole has been obtained from the models for the monopole and  $\mu^2$ -moment. As the BAO peak positions in the monopole and  $\mu^2$ -moment are similar to those in the fiducial model, there is no apparent BAO signature in the quadrupole. Within each panel, we also display the data and best-fitting model for the monopole and  $\mu^2$ -moment divided by the smoothed power spectrum  $P_{\text{sm}}$  of equation (5) for the best-fitting model. For clarity, the bottom sub-panels show the residuals between the measurement and the model,  $\Delta P \equiv P^{\text{model}} - P^{\text{data}}$ , divided by the  $1\sigma$  error of the data. The black dashed lines marks the  $1\sigma$  and  $2\sigma$  deviations. The model is able to accurately reproduce the BAO features both in the monopole and  $\mu^2$ -moment for both LOWZ and CMASS sample. As expected, the BAO features are more significant in the monopole than in the  $\mu^2$ -moment, as the former has a higher signal-to-noise ratio. Similarly, the BAO features are stronger in the CMASS sample than in the LOWZ.

At large scales, the quadrupole measured for both LOWZ and CMASS samples is small, consistent with the reconstruction process removing the linear component of the RSD. However, the reconstruction process is not able to fully suppress the whole RSD signal and nonlinear components are left, as is the AP effect caused by the potential differences between the true underlying  $\Omega_m$  and the fiducial value assumed, in this case  $\Omega_m = 0.31$ .

Fig. 2 displays the output of the MCMC chains when estimating the BAO peak position in the monopole and  $\mu^2$ -moment, in the pre- and post-recon data catalogues, for the LOWZ and CMASS samples, as labelled in each panel. The blue and red contours display the 68 per cent and 95.4 per cent confident regions, respectively. In this case the QPM covariance matrix has been used in all cases. By comparing the pre- and post-recon panels we see how the likelihood surface in the  $\alpha_0 - \alpha_2$  parameter space is significantly reduced in the both LOWZ and CMASS sample, both for  $\alpha_0$  and  $\alpha_2$ . These results are consistent with DR11 results (Anderson et al. 2014; Tojeiro et al. 2014).

Table 3 presents the marginalized measurements of  $\alpha_0$  and  $\alpha_2$  (and the derived AP parameters,  $\alpha_{\parallel}$  and  $\alpha_{\perp}$  for the post-recon samples) calculated from the MCMC chains (such as those presented in Fig. 2), for the following cases:

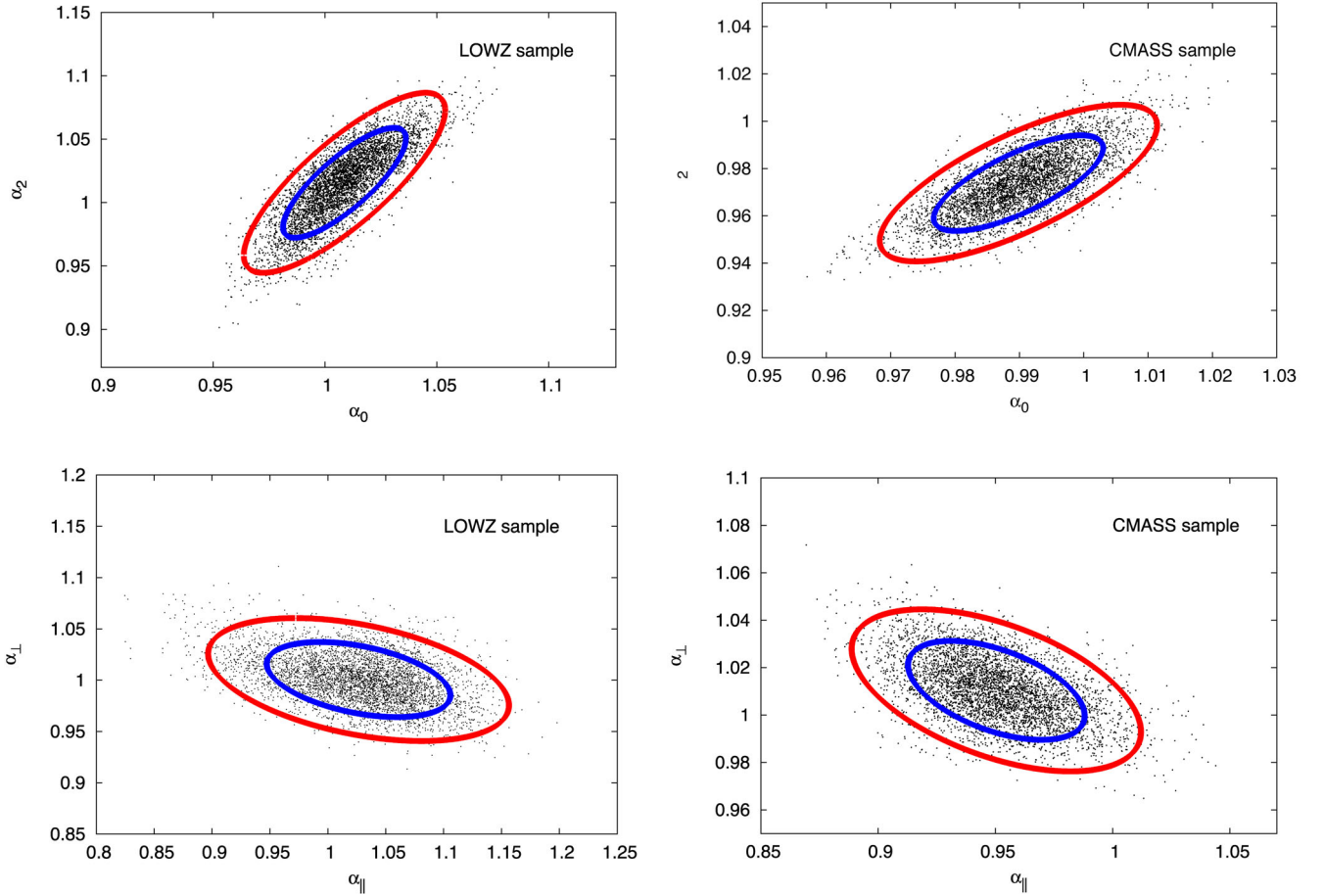


**Figure 2.** Likelihood surfaces in the  $\alpha_0 - \alpha_2$  parameter space obtained from measuring the power-spectrum DR12 data monopole and  $\mu^2$ -moment. The black points are the (down-sampled) output of the MCMC chain, for the CMASS and LOWZ samples, for both pre- and post-reconstructed catalogues, as labelled. In all cases the QPM-covariance matrix has been used for estimating the power-spectrum errors and their correlations. The blue and red contours show the 68 per cent and 95.4 per cent confident regions, respectively.

- (i) Pre-recon catalogues when the MD-PATCHY covariance matrix has been used.
- (ii) Pre-recon catalogues adopting the QPM covariance matrix.
- (iii) Post-recon catalogues when the MD-PATCHY covariance matrix has been used.
- (iv) Post-recon catalogues when the QPM covariance matrix has been used.

The pre-recon results from both MD-PATCHY and QPM covariance matrices agree very well, both in the measurement and errors, suggesting that, as it was observed for the RSD analysis in Paper I, the impact of the differences between mocks when translated into the covariance matrices of the power spectra is not significant. For pre-recon, we measure the BAO peak position in the monopole with  $\simeq 3$  per cent and  $\simeq 1.5$  per cent precision in the LOWZ and CMASS samples, respectively. In the  $\mu^2$ -moment we are able to measure the BAO peak position with  $\simeq 4$  per cent and  $\simeq 2.4$  per cent precision in the LOWZ and CMASS samples, respectively.

The post-recon results using either MD-PATCHY or QPM covariance matrices also agree very well, with differences that are much smaller than the uncertainties due to the statistical errors. The post-recon results show an improvement on the level of precision for



**Figure 3.** Distribution of the MCMC points for the DR12 data post-recon catalogues where the qPM covariance matrix is used, in terms of the BAO peak position variables ( $\alpha_0$  and  $\alpha_2$ , in the top panels) and the AP parameters ( $\alpha_{\parallel}$  and  $\alpha_{\perp}$ , in the bottom panels) for the LOWZ sample (left-hand panels) and for the CMASS sample (right-hand panels). In blue lines the  $1\sigma$  ellipses ( $\Delta\chi^2 = 2.30$ ) and in red lines the  $2\sigma$  ellipses ( $\Delta\chi^2 = 6.17$ ) corresponding to Gaussian fits to the likelihood based on the parameters given Table 3. For all cases the distribution of points is close to a Gaussian distribution.

the BAO peak position determination, both in the monopole and in the  $\mu^2$ -moment. We are able to improve the determination of the BAO peak position in the monopole down to  $\sim 1.8$  per cent and  $\sim 0.90$  per cent precision for the LOWZ and CMASS samples, respectively. The BAO peak position in the  $\mu^2$ -moment is determined with  $\sim 2.8$  per cent and  $\sim 1.4$  per cent precision for the LOWZ and CMASS samples, respectively. For the CMASS sample, this result represents an improvement of  $\simeq 50$  per cent, both in  $\alpha_0$  and  $\alpha_2$ . For the LOWZ sample the improvement is of  $\simeq 40$  per cent for  $\alpha_0$  and  $\sim 25$  per cent for  $\alpha_2$ .

The top panels of Fig. 3 show the distribution of points in our MCMC chains for the post-recon LOWZ and CMASS DR12 data samples. We have included  $1\sigma$  ( $\Delta\chi^2 = 2.30$  in blue ellipses) and  $2\sigma$  ( $\Delta\chi^2 = 6.17$  in red ellipses) contours from the Gaussian fit corresponding to the parameters extracted from the qPM covariance quoted in Table 3. For the BAO peak position variables,  $\alpha_0$  and  $\alpha_2$ , as well as the AP variables  $\alpha_{\parallel}$  and  $\alpha_{\perp}$ , the distribution of points matches well the Gaussian fits. Combining the best-fitting results on  $\alpha_{\parallel}$  and  $\alpha_{\perp}$  of Table 3 for both qPM and MD-PATCHY-based covariance matrices and the relations of equation (7), we report,  $H(z_{\text{LOWZ}})r_s(z_d) = (11.60 \pm 0.60) \times 10^3 \text{ km s}^{-1}$  and  $D_A(z_{\text{LOWZ}})/r_s(z_d) = 6.66 \pm 0.16$  for the LOWZ sample with a cross-correlation coefficient of  $r_{HD_A} = 0.41$ ; and  $H(z_{\text{CMASS}})r_s(z_d) = (14.56 \pm 0.37) \times 10^3 \text{ km s}^{-1}$  and  $D_A(z_{\text{CMASS}})/r_s(z_d) =$

$9.42 \pm 0.13$  with a cross-correlation coefficient of  $r_{HD_A} = 0.47$ . These quantities represent for  $H(z)r_s(z_d)$  a 5.2 per cent and a 2.5 per cent measurement precision, for LOWZ and CMASS, respectively; and for  $D_A(z)/r_s(z_d)$  a 2.4 per cent and a 1.4 per cent measurement precision, for LOWZ and CMASS, respectively. We can also put constraints on  $D_V(z) = (cz(1+z)D_A^2 H^{-1})^{1/3}$ , which is the combination of parameters upon which the BAO location would depend for a galaxy sample with an isotropically distributed set of equally weighted pair separations. We find that for LOWZ  $D_V(z_{\text{LOWZ}})/r_s(z_d) = 8.62 \pm 0.15$ ; whereas for CMASS  $D_V(z_{\text{CMASS}})/r_s(z_d) = 13.70 \pm 0.12$ .

## 6.1 Consensus values

We combine the measurements presented above with those obtained using the correlation function monopole,  $\xi^{(0)}$ , and quadrupole,  $\xi^{(2)}$ , of the same data set reported in (Cuesta et al. 2016, companion paper), and report the consensus values for  $H(z)r_s(z_d)$ ,  $D_A(z)/r_s(z_d)^3$  and  $D_V(z)/r_s(z_d)$ . We summarize these values in Table 4. We see

<sup>3</sup> Note that in (Cuesta et al. 2016, companion paper) a different fiducial cosmology has been used to compute  $\alpha_{\parallel}$  and  $\alpha_{\perp}$ . However, the results in terms of  $H(z)r_s(z_d)$  and  $D_A(z)/r_s(z_d)$  should not depend on this assumption.



**Table 4.** Distance constrain parameters,  $H(z)r_s(z_d)$ ,  $D_A(z)/r_s(z_d)$  and their correlation coefficient  $r_{HD_A}$ , inferred from the post-recon power spectrum (this work) and correlation function analysis (Cuesta et al. 2016, companion paper), and the corresponding consensus value. The correlation coefficient between the power spectrum and the correlation function has been determined using the QPM post-recon mocks. In addition, we show the derived parameter  $D_V$ .

Sample	Statistic	$H(z)r_s(z_d)$ [ $10^3 \text{ km s}^{-1}$ ]	$D_A(z)/r_s(z_d)$	$r_{HD_A}$	$D_V(z)/r_s(z_d)$
LOWZ	Power spectrum	$11.60 \pm 0.60$	$6.66 \pm 0.16$	0.41	$8.62 \pm 0.15$
	Correlation function	$11.65 \pm 0.81$	$6.67 \pm 0.14$	0.29	$8.59 \pm 0.15$
	Consensus	$11.63 \pm 0.69$	$6.67 \pm 0.15$	0.35	$8.61 \pm 0.15$
CMASS	Power spectrum	$14.56 \pm 0.37$	$9.42 \pm 0.13$	0.47	$13.70 \pm 0.12$
	Correlation function	$14.75 \pm 0.50$	$9.52 \pm 0.13$	0.57	$13.79 \pm 0.14$
	Consensus	$14.67 \pm 0.42$	$9.47 \pm 0.12$	0.52	$13.74 \pm 0.13$

that both analyses agree well within  $1\sigma$  error-bars. Although in theory the power spectrum and the correlation function contain the same information, in practice the analysis is performed on a finite range of scales, and the information content of the two estimators differs slightly. The correlation between them is large, as reported in the DR11 analysis (Anderson et al. 2014) with a correlation factor of  $r \simeq 0.95$  for  $\alpha_0$ . Using the post-recon QPM mocks we have determined that for DR12 data the correlation factor between the power spectrum and the correlation function is 0.91 in the LOWZ and 0.83 in the CMASS sample, for both  $\alpha_{\parallel}$  and  $\alpha_{\perp}$ . This change is not produced by the differences between the geometries of DR11 and DR12, which are very similar, but because for DR11 the fitting to the isotropic correlation function was performed using eight bin-positions, whereas for the anisotropic correlation function of DR12 was performed only using 1 bin-position. This makes the DR12 anisotropic correlation function fits noisier with respect to the DR11 ones, but at the same time, the correlation factor between  $\xi$  and  $P$  is reduced. In this way, the reduction on the error-bars produced by using more bin-positions is partially canceled by the fact that the correlation factor approaches to 1. Thus, the final results on the consensus value of the error-bars does not strongly depend on the number of bin-positions used in the correlation function analysis.

From Table 4 we also note that both for LOWZ and CMASS the errors on  $H(z)r_s(z_d)$  are  $\sim 25$  per cent smaller when this quantity is estimated from the power spectrum. On the other hand, the errors on  $D_A(z)/r_s(z_d)$  are similar for both LOWZ and CMASS. We have observed these differences not only from the likelihood of the data, but from the dispersion of the mocks, which demonstrates that the origin of this discrepancy is related to the methodology of how  $P^{(0)}(k)$  and  $P^{(\mu^2)}$  are fit compared to how  $\xi^{(0)}$  and  $\xi^{(2)}$  are, and not with the data. These differences suggest that fitting the BAO peak position in the  $\mu^2$ -moment (instead of fitting the quadrupole) is able to constrain better the AP distortion in the radial direction, both for LOWZ and CMASS.

Using this correlation factor, we combine the measurements to obtain a consensus value,

$$\alpha_{\text{con}} = \frac{\alpha_P + \alpha_{\xi}}{2}, \quad (12)$$

$$\sigma_{\text{con}} = \frac{\sigma_P + \sigma_{\xi}}{2} \left( \frac{1+r}{2} \right)^{1/2}, \quad (13)$$

where  $\alpha_P \pm \sigma_P$  and  $\alpha_{\xi} \pm \sigma_{\xi}$  are the AP parameters measured from the power spectrum and correlation fraction, respectively, and  $\alpha_{\text{con}} \pm \sigma_{\text{con}}$  the consensus value. When  $r = 0$ , both measurements would be independent and we would get a reduction of a factor of 2 on the error-bars, whereas when  $r = 1$  both measurements are fully correlated and therefore the error-bars is unchanged. Using the

correlation factors found in this paper, combining the correlation function and power-spectrum measurements improve the error bars by a few per cent, both in LOWZ and CMASS.

## 7 CONCLUSIONS

We have presented a new method to use baryon acoustic oscillations, measured with respect to the line of sight (LOS), to make cosmological measurements. The method fits the model of Anderson et al. (2014) to both the monopole and  $\mu^2$ -moments, providing two correlated measurements of BAO positions using both statistics. This technique allows the clean separation of the BAO component from the broad-band power for both spherically-averaged determinations and measurements that are anisotropic around the LOS. This separation is harder to achieve when fitting the quadrupole where the BAO signal is removed if the fiducial cosmology matches the true one. We have applied this method to measurements of the anisotropic power spectra for the LOWZ and CMASS DR12 galaxies of the Baryon Oscillations Spectroscopic Survey of the Sloan Digital Sky Survey III, presented in Paper I, to constrain the BAO peak position in the monopole ( $\alpha_0$ ) and in the  $\mu^2$ -moment ( $\alpha_2$ ).

We have tested potential systematics of the BAO model using the post-recon QPM mocks catalogues, assuming different cosmology parameters and different BAO features models. We are able to constrain the BAO peak position in the monopole and  $\mu^2$ -moment better than 0.3 per cent accuracy. These values are several times smaller than the  $1\sigma$  statistical errors in the LOWZ and CMASS samples. Furthermore, the scatter in these values appears random, and a significant component is likely due to residual noise. These tests explicitly demonstrate that the method is independent of the fiducial cosmology assumed when calculating the power spectrum, or the BAO model to be fitted to the data.

We have used the MD-PATCHY and QPM mocks in the pre-reconstructed and post-reconstructed catalogues to estimate the covariance matrices and hence the error-bars in the BAO peak position parameters. We have found no significant differences in the results. From the post-reconstructed DR12 data power-spectrum monopole and  $\mu^2$ -moment we have measured:  $\alpha_0(z_{\text{LOWZ}}) = 1.009 \pm 0.018$  and  $\alpha_2(z_{\text{LOWZ}}) = 1.017 \pm 0.028$  with  $r_{02} = 0.81$ , where  $z_{\text{LOWZ}} = 0.32$ ; and  $\alpha_0(z_{\text{CMASS}}) = 0.9897 \pm 0.0090$  and  $\alpha_2(z_{\text{CMASS}}) = 0.974 \pm 0.014$  with  $r_{02} = 0.75$ , where  $z_{\text{CMASS}} = 0.57$ . We report these measurements in terms of cosmological parameters:  $H(z_{\text{LOWZ}})r_s(z_d) = (11.60 \pm 0.60) \times 10^3 \text{ km s}^{-1}$  and  $D_A(z_{\text{LOWZ}})/r_s(z_d) = 6.66 \pm 0.16$  with a cross-correlation coefficient of  $r_{HD_A} = 0.41$ , for the LOWZ sample; and  $H(z_{\text{CMASS}})r_s(z_d) = (14.56 \pm 0.37) \times 10^3 \text{ km s}^{-1}$  and  $D_A(z_{\text{CMASS}})/r_s(z_d) = 9.42 \pm 0.13$  with a cross-correlation coefficient of  $r_{HD_A} = 0.47$ , for the CMASS sample.

We have combined these measurements with those obtained using the correlation function monopole,  $\xi^{(0)}$ , and quadrupole,  $\xi^{(2)}$ , of the same data set reported in (Cuesta et al. 2016, companion paper). We report  $H(z_{\text{LOWZ}})/r_s(z_d) = (11.63 \pm 0.69) \times 10^3 \text{ km s}^{-1}$  and  $D_A(z_{\text{LOWZ}})/r_s(z_d) = 6.67 \pm 0.15$  with a cross-correlation coefficient of  $r_{HDA} = 0.35$ , for the LOWZ sample; and  $H(z_{\text{CMASS}})/r_s(z_d) = (14.67 \pm 0.42) \times 10^3 \text{ km s}^{-1}$  and  $D_A(z_{\text{CMASS}})/r_s(z_d) = 9.47 \pm 0.12$  with a cross-correlation coefficient of  $r_{HDA} = 0.52$ , for the CMASS sample. We see that the results reported from the analysis of the power spectrum agree well within  $1\sigma$  error-bars with the consensus values inferred from combining the power spectrum and 2-point correlation function analyses.

## ACKNOWLEDGEMENTS

HGM is grateful for support from the UK Science and Technology Facilities Council through the grant ST/I001204/1. WJP is grateful for support from the UK Science and Technology Facilities Research Council through the grant ST/I001204/1, and the European Research Council through the grant ‘‘Darksurvey’’, reference 614030. FSK acknowledges the support of the Karl-Schwarzschild Program from the Leibniz Society.

Funding for SDSS-III has been provided by the Alfred P. Sloan Foundation, the Participating Institutions, the National Science Foundation, and the U.S. Department of Energy Office of Science. The SDSS-III web site is <http://www.sdss3.org/>.

SDSS-III is managed by the Astrophysical Research Consortium for the Participating Institutions of the SDSS-III Collaboration including the University of Arizona, the Brazilian Participation Group, Brookhaven National Laboratory, University of Cambridge, Carnegie Mellon University, University of Florida, the French Participation Group, the German Participation Group, Harvard University, the Instituto de Astrofísica de Canarias, the Michigan State/Notre Dame/JINA Participation Group, Johns Hopkins University, Lawrence Berkeley National Laboratory, Max Planck Institute for Astrophysics, Max Planck Institute for Extraterrestrial Physics, New Mexico State University, New York University, Ohio State University, Pennsylvania State University, University of Portsmouth, Princeton University, the Spanish Participation Group, University of Tokyo, University of Utah, Vanderbilt University, University of Virginia, University of Washington, and Yale University. This research used resources of the National Energy Research Scientific Computing Center, which is supported by the Office of Science of the U.S. Department of Energy under Contract No. DE-AC02-05CH11231.

Numerical computations were done on the Sciama High Performance Compute (HPC) cluster which is supported by the ICG, SEPNet and the University of Portsmouth.

## REFERENCES

Alam S. et al., 2015, ApJS, 219, 12  
 Anderson L. et al., 2014, MNRAS, 441, 24  
 Beutler F. et al., 2014, MNRAS, 443, 1065  
 Bianchi D., Gil-Marín H., Ruggeri R., Percival W. J., 2015, MNRAS, 453L, 11  
 Bolton A. S. et al., 2012, AJ, 144, 144  
 Burden A., Percival W. J., Manera M., Cuesta A. J., Vargas Magana M., Ho S., 2014, MNRAS, 445, 3152  
 Burden A., Percival W. J., Howlett C., 2015, MNRAS, 453, 456  
 Cuesta A. J. et al., 2016, MNRAS, 457, 1770  
 Dawson K. S. et al., 2013, AJ, 145, 10  
 Doi M. et al., 2010, AJ, 139, 1628

Eisenstein D. J., Hu W., 1998, ApJ, 496, 605  
 Eisenstein D. J. et al., 2005, ApJ, 633, 560  
 Eisenstein D. J., Seo H.-J., Sirko E., Spergel D. N., 2007, ApJ, 664, 675  
 Eisenstein D. J. et al., 2011, AJ, 142, 72  
 Feldman H. A., Kaiser N., Peacock J. A., 1994, ApJ, 426, 23  
 Fukugita M., Ichikawa T., Gunn J. E., Doi M., Shimasaku K., Schneider D. P., 1996, AJ, 111, 1748  
 Gil-Marín H. et al., 2016, MNRAS, 460, 4188 (Paper I)  
 Gunn J. E. et al., 1998, AJ, 116, 3040  
 Gunn J. E. et al., 2006, AJ, 131, 2332  
 Hartlap J., Simon P., Schneider P., 2007, A&A, 464, 399  
 Kitaura F.-S. et al., 2016, MNRAS, 456, 4156  
 Lewis A., Challinor A., Lasenby A., 2000, ApJ, 538, 473  
 Padmanabhan N., White M., Cohn J. D., 2009, Phys. Rev. D, 79, 063523  
 Percival W. J. et al., 2014, MNRAS, 439, 2531  
 Reid B. A., Eisenstein D., Ho S., Padmanabhan N., Percival W. J., 2016, MNRAS, 455, 1553  
 Ross A. J. et al., 2012, MNRAS, 424, 564  
 Ross A. J., Percival W. J., Manera M., 2015, MNRAS, 451, 1331  
 Samushia L., Branchini E., Percival W., 2015, MNRAS, 452, 3704  
 Smees S. A. et al., 2013, AJ, 146, 32  
 Smith J. A. et al., 2002, AJ, 123, 2121  
 Tojeiro R. et al., 2014, MNRAS, 440, 2222  
 White M., Tinker J. L., McBride C. K., 2014, MNRAS, 437, 2594  
 Yamamoto K., Nakamichi M., Kamino A., Bassett B. A., Nishioka H., 2006, PASJ, 58, 93  
 Yoo J., Seljak U., 2015, MNRAS, 447, 1789

<sup>1</sup>*Institute of Cosmology and Gravitation, University of Portsmouth, Dennis Sciama Building, Portsmouth PO1 3FX, UK*

<sup>2</sup>*Institut de Ciències del Cosmos, Universitat de Barcelona, IEEC-UB, Martí i Franquès 1, E-08028 Barcelona, Spain*

<sup>3</sup>*Department of Physics and Astronomy, University of Utah, 115 S 1400 E, Salt Lake City, UT 84112, USA*

<sup>4</sup>*Instituto de Física Teórica, (UAM/CSIC), Universidad Autónoma de Madrid, Cantoblanco, E-28049 Madrid, Spain*

<sup>5</sup>*McWilliams Center, Carnegie Mellon University, Pittsburgh, PA 15213, USA*

<sup>6</sup>*Leibniz-Institut für Astrophysik (AIP), An der Sternwarte 16, D-14482 Potsdam, Germany*

<sup>7</sup>*Departamento de Física Teórica, Universidad Autónoma de Madrid, Cantoblanco, E-28049 Madrid, Spain*

<sup>8</sup>*Instituto de Astrofísica de Andalucía (CSIC), Glorieta de la Astronomía, E-18080 Granada, Spain*

<sup>9</sup>*Campus of International Excellence UAM+CSIC, Cantoblanco, E-28049 Madrid, Spain*

<sup>10</sup>*Center for Cosmology and AstroParticle Physics, The Ohio State University, Columbus, OH 43210, USA*

<sup>11</sup>*Lawrence Berkeley National Laboratory, 1 Cyclotron Road, Berkeley, CA 94720 USA*

<sup>12</sup>*Department of Astronomy and Astrophysics, The Pennsylvania State University, University Park, PA 16802, USA*

<sup>13</sup>*Institute for Gravitation and the Cosmos, The Pennsylvania State University, University Park, PA 16802, USA*

<sup>14</sup>*Center for Cosmology and Particle Physics, Department of Physics, New York University, New York, NY 10003, USA*

<sup>15</sup>*School of Physics and Astronomy, St Andrews KY16 9SS, UK*

<sup>16</sup>*Instituto de Física, Universidad Nacional Autónoma de México, Apdo. Postal 20-364, México*

<sup>17</sup>*National Astronomy Observatories, Chinese Academy of Science, Beijing 100012, P. R. China*