



Blackboard®

**Sheffield
Hallam
University**

**Assessment Journey: a programme to provide
a seamless and improved assessment
experience for staff and students**

Brian Irwin, Jon Childs and Stuart Hepplestone
(Sheffield Hallam University, UK)

#BbTLC16

INNOVATE | Teaching & Learning
& EDUCATE | Conference by Blackboard
2016 Groningen
6th - 8th April

About this session

- By the end of this session, participants will:
 - learn how the Assessment Journey Programme at Sheffield Hallam University is delivering a seamless and improved assessment experience
 - discover how Blackboard solutions are being exploited to implement the technological future state for online management of assessment
 - consider the challenges faced when implementing an ‘assessment journey’ to enhance the educational experience and improve institutional effectiveness of assessment

About Sheffield Hallam University

- 6th largest university in the UK
- Over 31,500 students (24,600 undergraduate and 6,900 postgraduate students)
- Over 2,150 academic staff
- 4 teaching faculties covering 18 academic departments

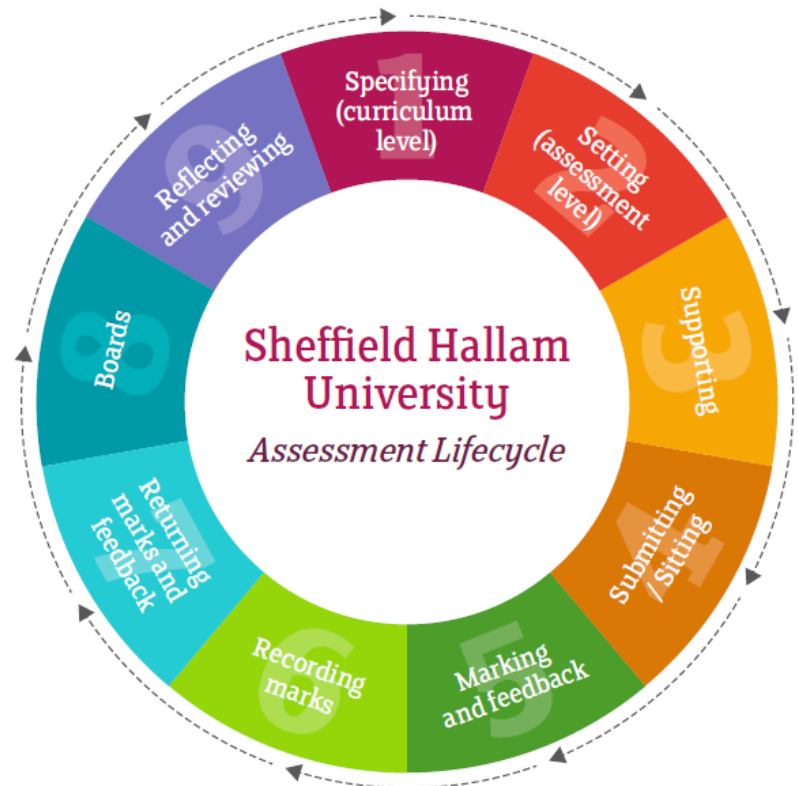


Assessment Journey Programme

- Supports the University Strategy by delivering a consistent, seamless and improved assessment experience for students and staff supported by efficient and integrated processes and systems
- Will provide a joined-up, end-to-end assessment lifecycle, supported by the use of technology, to:
 - deliver clear and accessible guidance and information around assessment design, marking and feedback
 - provide a student course-wide view of upcoming, and results of completed, assessments (assessment portal)
 - submit, and receipt the submission of, coursework online
 - publish feedback and grades online
 - deliver an integrated model for single mark entry
- Delivered over 3 years
- Two main projects: Assessment Design and Delivery (ADD); and Online Management of Assessment (OMA)

Assessment vision and lifecycle

- Assessment is recognised as an integral part of the University strategy
- Assessments are designed around clear learner focused principles
- Expectations for assessment are clearly set around what is required, how work will be assessed and when this will be submitted
- The assessment experience for students and staff is clear and coherent, providing integrated processes and one point of access for assessment related information
- Students will primarily submit work online and will have access to all feedback and their marks, online from a single point of access
- Feedback tools and resources are made available that support staff to generate useful feedback for students quickly and consistently
- Marking criteria and practice is clear, fair and transparent
- Assessment processes are effective and efficient and activities are automated as far as possible
- There is single mark entry and a single authoritative data source for marks and assessment data
- Systems and processes should be intuitive and guide students, academic and professional services staff through the entire assessment cycle



Lifecycle adapted from, and attributed to, JISC and Manchester Met

Timescales for implementation

Academic Year 2015/16

Formal introduction of the Assessment Design and Delivery Framework across the University: this will be implemented in advance of any formal policy on online submission and feedback to enable staff to align assessment practice with the framework's guidance and move towards managing assessment online.

Academic Year 2016/17

Implement online management of assessment including submission and feedback to levels 4 and 7 (plus existing/early adopters for levels 5 and 6).

Academic Year 2017/18

Implement to all other levels.

One programme, two projects

**'It is clear that the programme should consider the pedagogic perspective of assessment design and delivery as well as the system and process elements of assessment change. To do this and consider the holistic assessment lifecycle, the programme will deliver two main strands of change: transitional technological change supporting the University to move towards a consistent model of online management of assessment, in parallel with work on assessment design, practice and delivery. To be successful, the balance between these two strands is a key consideration'*

**Excerpt from the Assessment Journey Programme business case:*

The Projects - Assessment Design and Delivery (ADD)

- The Assessment Design and Delivery Project will deliver:
 - an ‘**Assessment Essentials**’ framework for staff to assist in the effective design and delivery of assessment, illustrated with case studies –
<http://go.shu.ac.uk/assessmentessentials>
 - an ‘**Assessment4Students**’ framework for students providing guidance on assessment design, submission and feedback on work
 - Case studies
 - Engagement with staff

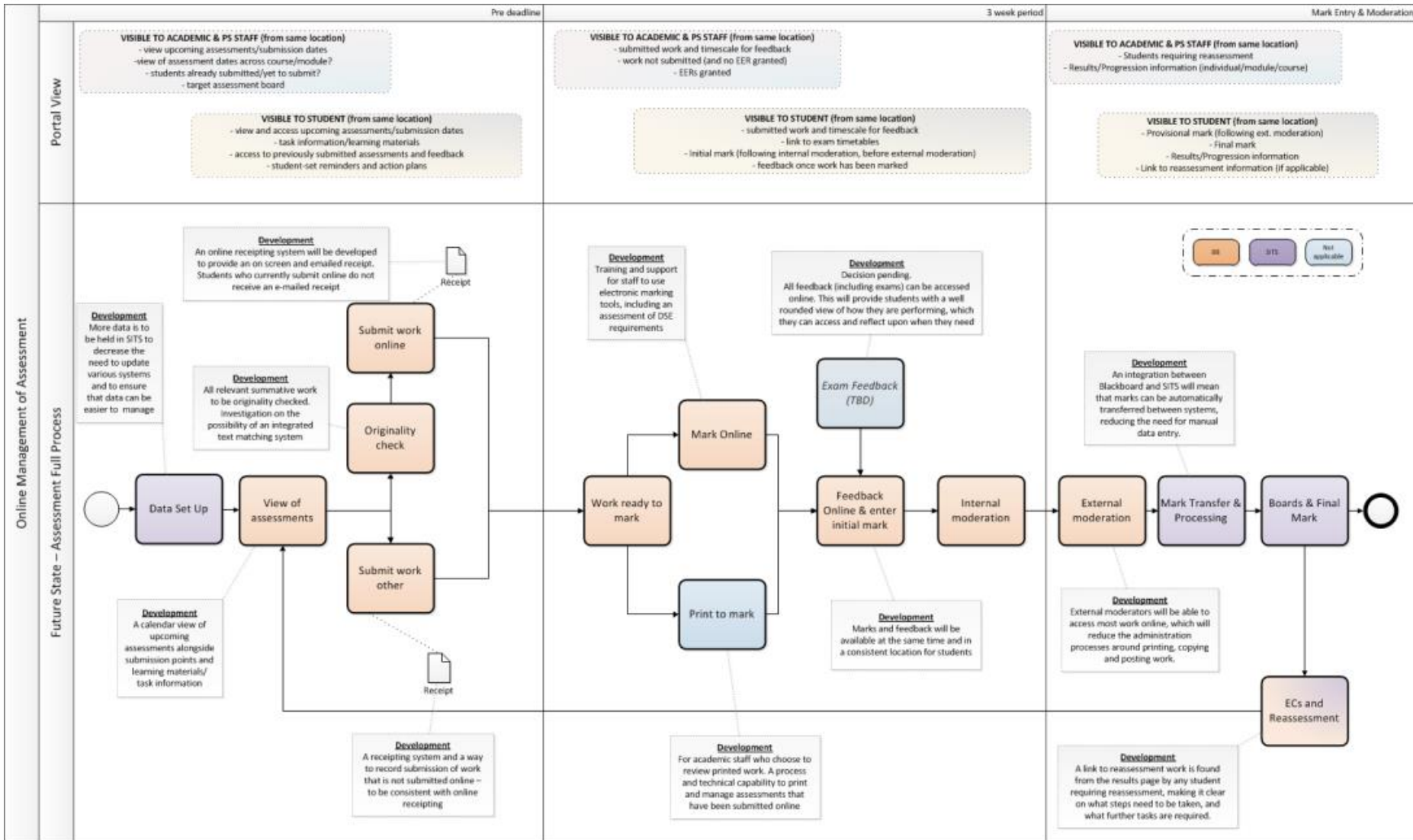
The Projects - Online Management of Assessment (OMA)

- The Online Management of Assessment Project will deliver:
 - deliver the policy, process and technology to provide an integrated model to support online submission, marking and feedback, and online mark entry and systematic updating of the student record system
 - deliver an integrated assessment scheduling and diary system to communicate assessment deadlines and extensions, and a single ‘portal’ for students and staff to access assessment information relating to their areas of study

Assessment lifecycle from an OMA perspective

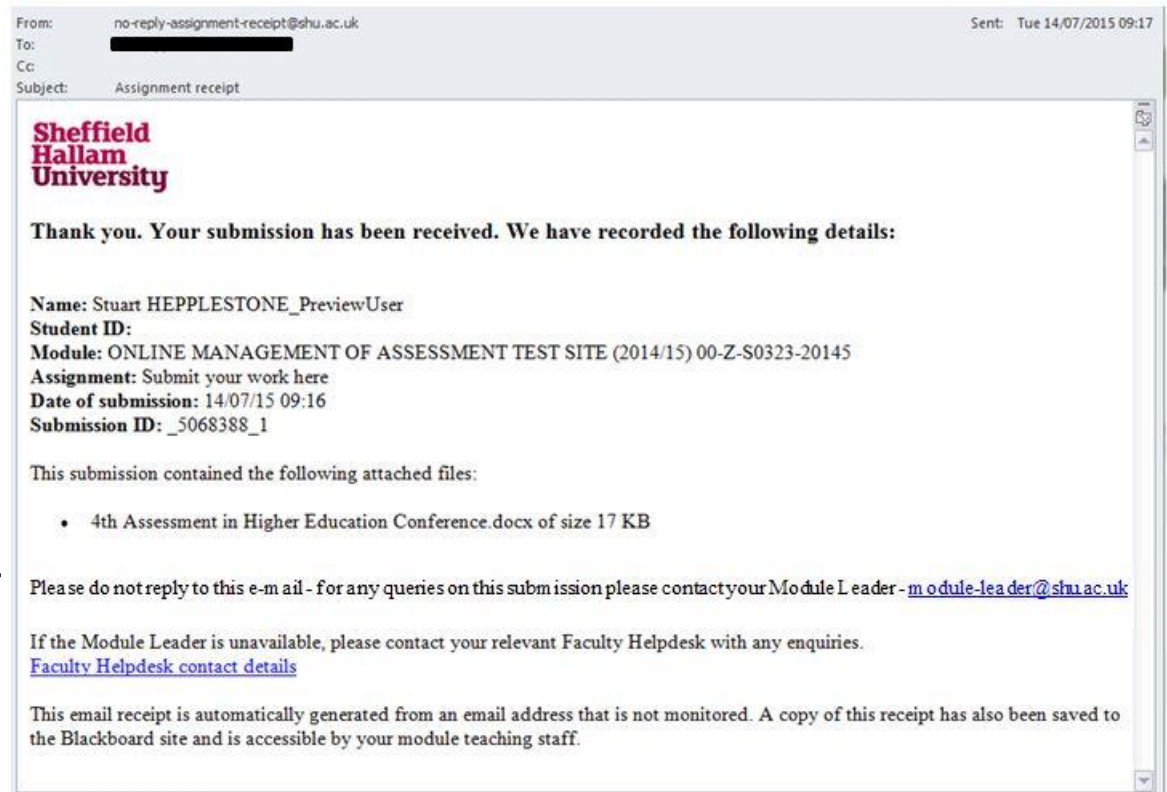
- Major points of activities:
 - setting up assessment data
 - providing students with an assessment overview
 - submitting work (online where possible)
 - originality checking (e.g. Turnitin/SafeAssign)
 - marking (however lecturers wish to)
 - feedback (online)
 - moderation (online)
 - transfer of marks from Blackboard to SITS
 - reassessment where needed

OMA technical model



Online receipting

- Customised **Advanced Receipting** Building Block
 - student automatically receives email confirmation of submission
 - copies of receipts issued stored in Content Collection
- Delivered quickly, summer 2015



Print to mark

- next business day print and delivery service provided for academic staff who do not wish to read student work on-screen
- uses Grade Centre-generated **Assignment File Download** zip file
- the academic submits the zip file in a form that goes to the Print Unit
- the .txt files in the zip file is used as a cover sheet

Delivery name

Department

Cost code

Delivery Address

Print options

Print size

Print type

Colour

Staple

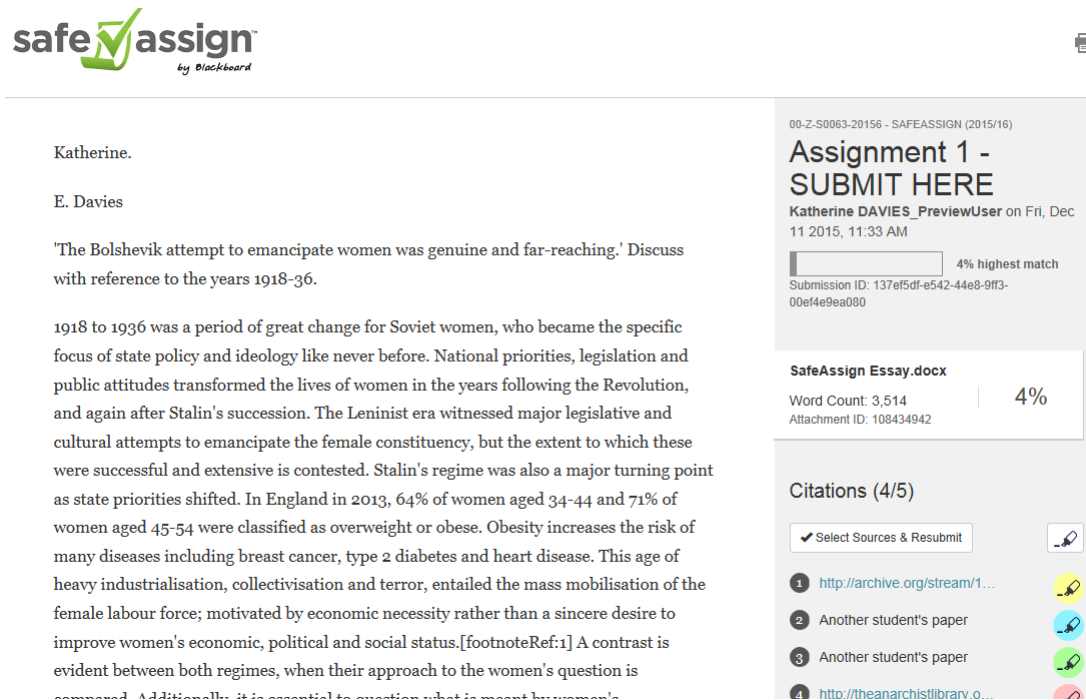
Copies

Orientation

Select assignment .zip file

Integrated text-matching

- some desire for all text-based submissions to be checked for originality
- piloting **SafeAssign** to enable a single point of submission and access to originality reports at the point of marking



The screenshot displays the SafeAssign interface. At the top left is the logo for 'safe assign by Blackboard'. The main content area shows a student's submission titled 'Katherine.' by 'E. Davies'. The submission text discusses the Bolshevik attempt to emancipate women in 1918-36. On the right side, a sidebar provides details for 'Assignment 1 - SUBMIT HERE', including the user 'Katherine DAVIES_PreviewUser' and a submission ID. Below this, a 'SafeAssign Essay.docx' file is shown with a '4%' similarity score, a word count of 3,514, and an attachment ID. At the bottom of the sidebar, a 'Citations (4/5)' section lists four sources, with the first being a URL from archive.org and the others being 'Another student's paper'.

Media-based submissions

- The norm is for students to submit work online via Blackboard **Assignments**
- Exploring use of **Medial** (new Helix) to support submission of media-based assessments and return of media-based feedback
- Challenges around other large file types, non-media

ASSIGNMENT SUBMISSION

Text Submission Write Submission

Attach File Browse My Computer Browse Content Collection

ADD COMMENTS

Batch upload of marks and feedback file attachments

- Evaluating Blackboard's **Marks and Feedback** tool to bulk upload marks and electronic feedback files to the Grade Centre

The screenshot illustrates the workflow for uploading marks and feedback files to the Blackboard Grade Centre. It shows the 'Manage' menu with 'Upload Grades and Feedback' selected, a file explorer window showing the upload of 'Environmental_monitoring.xls' and 'feedback_bb-student01.docx', a table of student marks, and the final upload status.

Name	Username	Environmental
udent01	bb-student01	56.00
udent02	bb-student02	47.00
udent03	bb-student03	..

Assignment title	Comment	Downloaded By	Validate	Release	Status
llrsjh_1459770844580.zip		Stuart HEPPLESTONE		Release grades	Contents validated successfully More details

Displaying 1 to 1 of 1 items | [Show All](#) | [Edit Paging...](#)

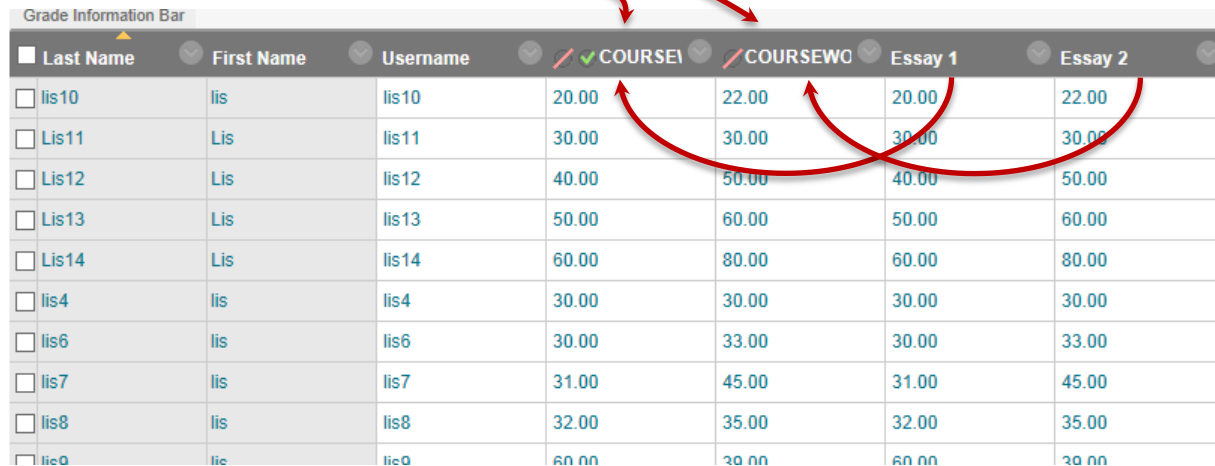
Marks transfer from Blackboard to our SIS (Tribal SITS)

- Grades Journey integration models available:
- LIS 2.0
 - ‘out of the box’ solution to automate creation of grade transfer columns enabling approval and extraction of grades from Blackboard for processing by SITS
- Enhanced:
 - flat file transfer allows bespoke customisation (e.g. creation of Assignment submission points)

Mark transfer – set up and mapping of columns

- Exploring Blackboard's Marks Approval and Transfer process to harvest marks from Blackboard into SITS:

1. **transfer columns** automatically created based on assessment data held in SITS



Grade Information Bar							
<input type="checkbox"/>	Last Name	First Name	Username	<input checked="" type="checkbox"/> COURSE1	<input checked="" type="checkbox"/> COURSEWO	<input checked="" type="checkbox"/> Essay 1	<input checked="" type="checkbox"/> Essay 2
<input type="checkbox"/>	lis10	lis	lis10	20.00	22.00	20.00	22.00
<input type="checkbox"/>	Lis11	Lis	lis11	30.00	30.00	30.00	30.00
<input type="checkbox"/>	Lis12	Lis	lis12	40.00	50.00	40.00	50.00
<input type="checkbox"/>	Lis13	Lis	lis13	50.00	60.00	50.00	60.00
<input type="checkbox"/>	Lis14	Lis	lis14	60.00	80.00	60.00	80.00
<input type="checkbox"/>	lis4	lis	lis4	30.00	30.00	30.00	30.00
<input type="checkbox"/>	lis6	lis	lis6	30.00	33.00	30.00	33.00
<input type="checkbox"/>	lis7	lis	lis7	31.00	45.00	31.00	45.00
<input type="checkbox"/>	lis8	lis	lis8	32.00	35.00	32.00	35.00
<input type="checkbox"/>	lis9	lis	lis9	60.00	30.00	60.00	30.00

2. transfer columns (weighted totals) edited and **grade columns** mapped against them

Mark transfer – giving approval to transfer

3. approval and transfer of marks at: ...course level

Course Mark Approval and Transfer
Search and select courses to approve or unapprove marks.

ID Equal to 66-6701-00S--2014_5--SEM1--A All And Date Created Before 04/04/2016

<input type="checkbox"/>	Status	Course ID	Course Name	Date Created	Term	Action Date	Last Updated By	Approval Status
<input type="checkbox"/>		66-6701-00S--2014_5--SEM1--A	PREPARATION FOR EMPLOYMENT (A-2015/6)	16/11/15 10.40		24/03/16 11.25	cisntb	Extracted

Displaying 1 to 1 of 1 items

...assessment/task level...

Mark Column Approval and Transfer
Select gradable items to approve or unapprove.

<input type="checkbox"/>	Mark Column Name	Course ID	Action Date	Last Updated By	Approval Status
<input type="checkbox"/>	COURSEWORK	66-6701-00S--2014_5--SEM1--A	24/03/16 11.25	cisntb	Extracted
<input type="checkbox"/>	COURSEWORK	66-6701-00S--2014_5--SEM1--A	24/03/16 11.25	cisntb	Extracted

...or student level

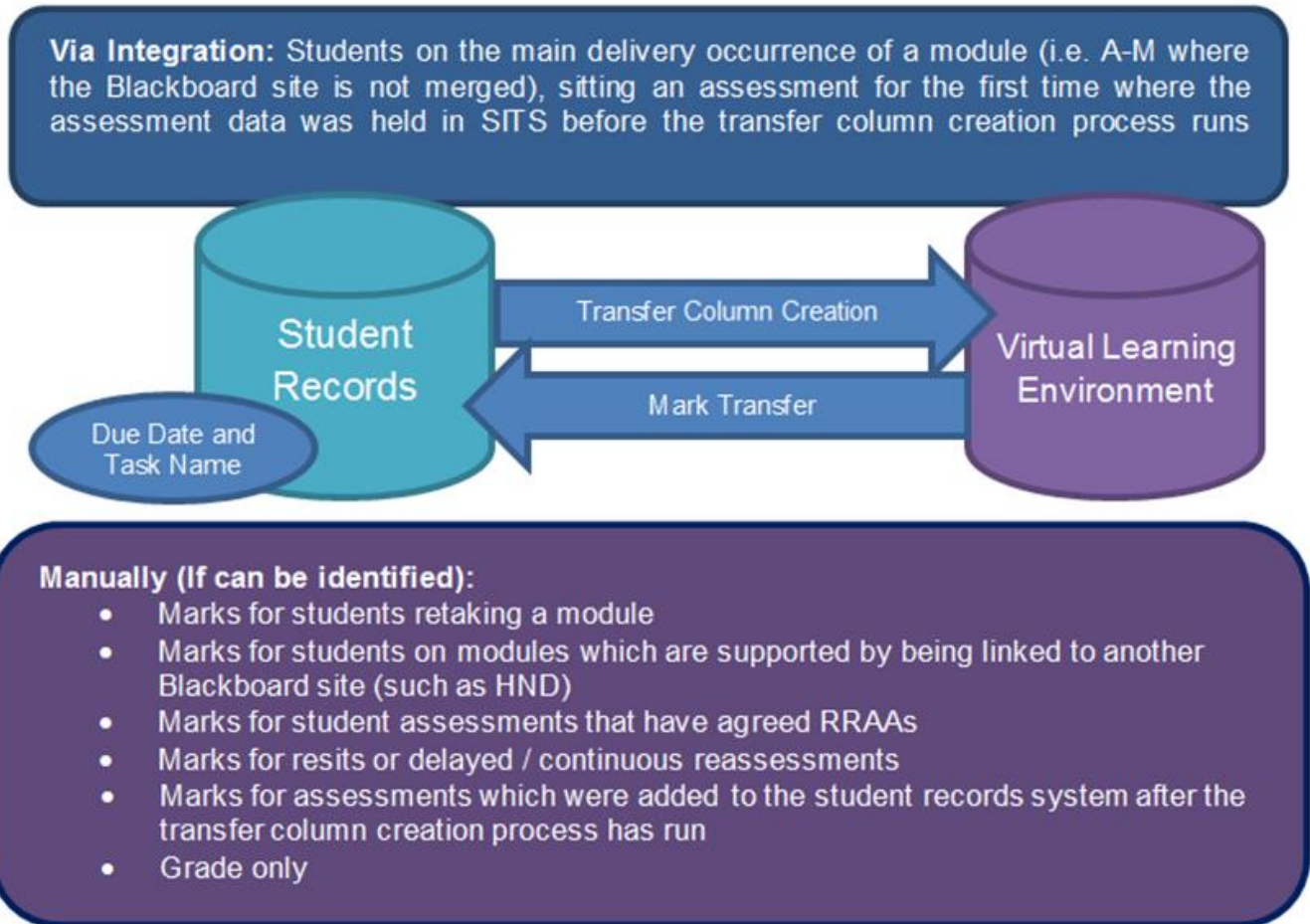
Mark Approval and Transfer
Select marks to approve or unapprove.

<input type="checkbox"/>	Mark Column Name	Course ID	Username	First Name	Last Name	Student ID	Action Date	Last Updated By	Approval Status
<input type="checkbox"/>	COURSEWORK	66-6701-00S--2014_5--SEM1--A	lis6	lis	lis6	14015131	24/03/16 11.23	cisntb	Extracted
<input type="checkbox"/>	COURSEWORK	66-6701-00S--2014_5--SEM1--A	lis7	lis	lis7	16026816	24/03/16 11.23	cisntb	Extracted
<input type="checkbox"/>	COURSEWORK	66-6701-00S--2014_5--SEM1--A	lis8	lis	lis8	17023372	24/03/16 11.23	cisntb	Extracted
<input type="checkbox"/>	COURSEWORK	66-6701-00S--2014_5--SEM1--A	lis9	lis	lis9	20004922	24/03/16 11.23	cisntb	Extracted
<input type="checkbox"/>	COURSEWORK	66-6701-00S--2014_5--SEM1--A	lis10	lis	lis10	21002304	24/03/16 11.23	cisntb	Extracted
<input type="checkbox"/>	COURSEWORK	66-6701-00S--2014_5--SEM1--A	lis11	Lis	Lis11	22029055	24/03/16 11.23	cisntb	Extracted
<input type="checkbox"/>	COURSEWORK	66-6701-00S--2014_5--SEM1--A	lis12	Lis	Lis12	22029793	24/03/16 11.23	cisntb	Extracted

but no indication of the individual marks being approved for extraction

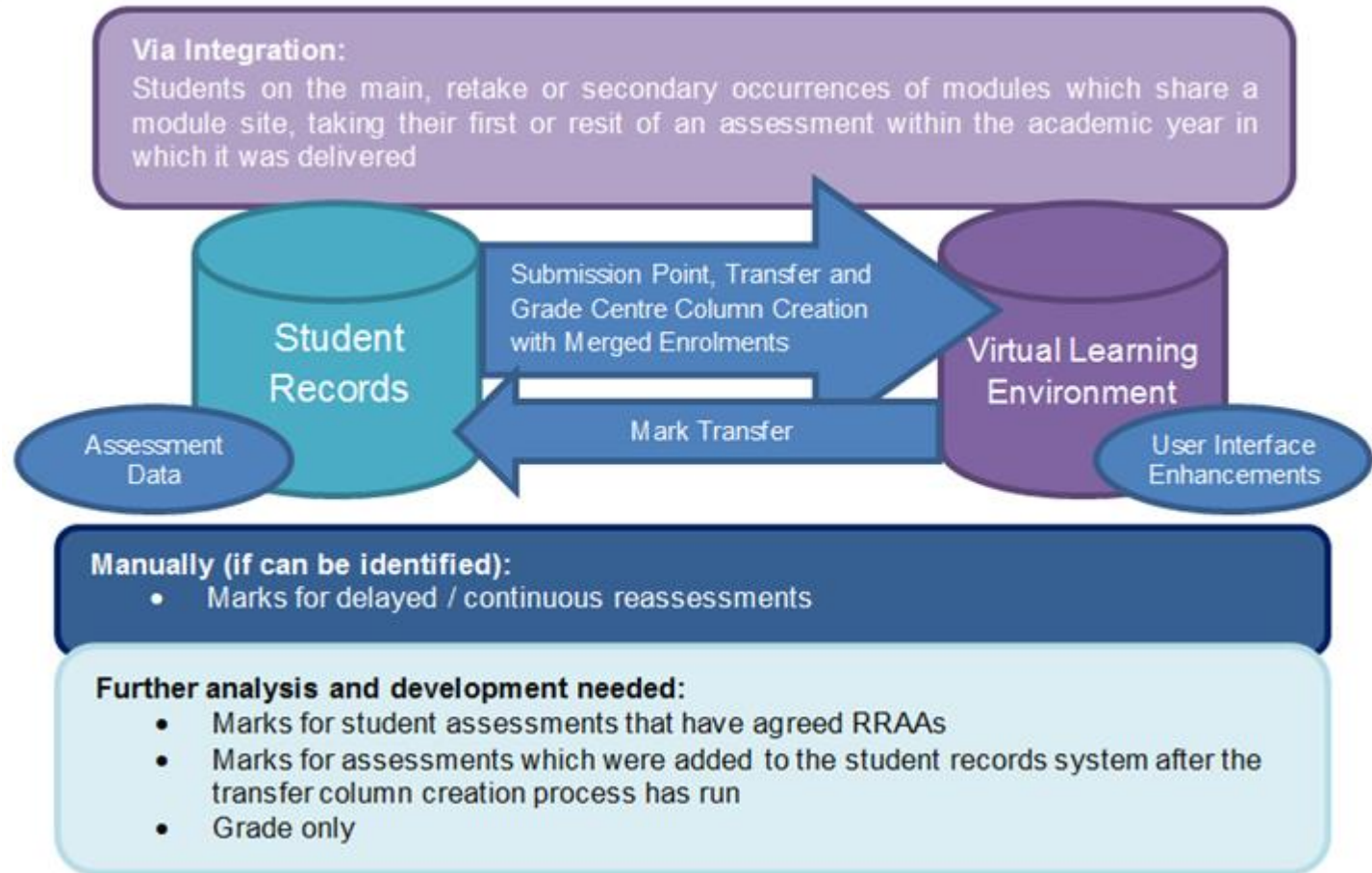
The challenges: Grades Journey LIS 2.0 integration

- merged enrolments (parent/child)
- reassessment - incomplete solution
- linking of mark and transfer columns
- support for non-numerical marks
- manual creation of Assignments, etc.



The challenges: Enhanced/bespoke non-LIS 2.0 solution

- merged enrolments (parent/child)
- continued/delayed reassessment
- linking of mark and transfer columns where nothing set up by integration
- support for non-numerical marks
- more bespoke development potentially for us



Student view of assessments across the course

Your Assessments						
<p>This view is a collection of all your module sites' My Grades. If an assessment or grade is not shown in My Grades for the individual module site, it will not appear here. Assessments and grades for organisation sites are not listed.</p>						
<p>List View Calendar</p> <p>2014/15</p>		<p>All Years 2013/14 </p> <p><input type="checkbox"/> Show Weighted</p>				
Totals						
Year ▼	Module ▼	Name ▼	Due Date ▼	Submission ▼	Feedback ▼	Grade ▼
2014/15	Environmental Change (12-4111-00L-A-20134)	Sub Task 1.1 - Assignment One	13-Mar-2015 3:30PM	13-Mar-2015 3:25 PM	Your Feedback.docx	67/100
2014/15	Environmental Change (12-4111-00L-A-20134)	Sub Task 1.2 - Lab Report			Feedback on Lab Report.xlsx	53/100
2014/15	Environmental Change (12-4111-00L-A-20134)	Task 1 Weighted Average of Assignment One (40%) and Lab Report (60%)				58.60%
2014/15	Environmental Change (12-4111-00L-A-20134)	Task 2.0 - Exam				64%
2014/15	Nature, Society and Environment (12-5666-00L-A-20145)	Task 3.0- Coursework Submission		05-May-2015 12:02 PM		
2014/15	Nature, Society and Environment (12-5666-00L-A-20145)	Task 4.0 - Exam	14-May-2015			
2014/15	American Business History (12-5888-00L-A-20145)	Sub Task 5.1- Phase Test One	29-Apr-2015 10:00AM	26-Apr-2015 10:33 AM		21/25
2014/15	American Business History (12-5888-00L-A-20145)		29-May-2015 3:30 PM (Submission available from: 15-May-2015 10:00 AM until: 5-June-2015 3:30 PM)			

Other key developments

- Assessment portal:
 - further building on the student view to incorporate staff
- Offline Receipting:
 - for work that cannot be submitted online to be consistent with receipting of online submissions
 - Blackboard Consulting building for us
- Marking work electronically:
 - student work annotated electronically using **Crocodoc** or feedback given using **Rubrics**, alternatively downloaded for generating comments and feedback offline
 - case studies around the options
- External moderation:
 - external examiners to be given access to work and marks through Blackboard
 - deciding level of access to give external examiners
- Reporting
 - are our targets being met?

Thank you. Any questions?



Contact:

Brian Irwin – B.Irwin@shu.ac.uk, @brianirwin

Jon Childs – J.Childs@shu.ac.uk

Stuart Hепplestone – S.J.Hepplestone@shu.ac.uk