



The University of
Nottingham

UNITED KINGDOM · CHINA · MALAYSIA

Botos, Akos and Biskupek, Johannes and Chamberlain, Thomas W. and Rance, Graham A. and Stoppiello, Craig T. and Sloan, Jeremy and Liu, Zheng and Suenaga, Kazutomo and Kaiser, Ute and Khlobystov, Andrei N. (2016) Carbon nanotubes as electrically active nanoreactors for multi-step inorganic synthesis: sequential transformations of molecules to nanoclusters, and nanoclusters to nanoribbons. *Journal of the American Chemistry Society*, 138 (26). pp. 8175-8183. ISSN 1520-5126

Access from the University of Nottingham repository:

http://eprints.nottingham.ac.uk/34937/1/Khlobystov_manuscript.pdf

Copyright and reuse:

The Nottingham ePrints service makes this work by researchers of the University of Nottingham available open access under the following conditions.

This article is made available under the University of Nottingham End User licence and may be reused according to the conditions of the licence. For more details see: http://eprints.nottingham.ac.uk/end_user_agreement.pdf

A note on versions:

The version presented here may differ from the published version or from the version of record. If you wish to cite this item you are advised to consult the publisher's version. Please see the repository url above for details on accessing the published version and note that access may require a subscription.

For more information, please contact eprints@nottingham.ac.uk

Carbon Nanotubes as Electrically Active Nanoreactors for Multi-Step Inorganic Synthesis:

Sequential Transformations of Molecules to Nanoclusters, and Nanoclusters to Nanoribbons

Akos Botos,¹ Johannes Biskupek,² Thomas W. Chamberlain,^{1,3} Graham A. Rance,¹ Craig T. Stoppiello,¹ Jeremy Sloan,⁴ Zheng Liu,^{5,6} Kazutomo Suenaga,⁵ Ute Kaiser,² Andrei N. Khlobystov*¹

¹ School of Chemistry, University of Nottingham, University Park, Nottingham NG7 2RD, U.K.

² Central Facility of Electron Microscopy, Electron Microscopy Group of Materials Science, Albert-Einstein-Allee 11, D-89081 Ulm, Germany

³ Institute of Process Research Development, School of Chemistry, University of Leeds, Leeds, LS2 9JT, U.K.

⁴ Warwick Centre for Analytical Science, Department of Physics, University of Warwick, Coventry, CV4 7AL, U.K.

⁵ Nanomaterials Research Institute, National Institute of Advanced Industrial Science and Technology (AIST), Tsukuba, 305-8565 Japan

⁶ Inorganic Functional Materials Research Institute, National Institute of Advanced Industrial Science and Technology (AIST), Nagoya, 463-8560 Japan

Abstract

In organic synthesis, the composition and structure of products are predetermined by the reaction conditions; however, the synthesis of well-defined inorganic nanostructures often presents a significant challenge yielding non-stoichiometric or polymorphic products. In this study, confinement in the nanoscale cavities of single-walled carbon nanotubes (SWNT) provides a new approach for multi-step inorganic synthesis where sequential chemical transformations take place within the same nanotube. In the first step, SWNT donate electrons to the reactant iodine molecules (I_2) transforming them to iodide anions (I^-). These then react with metal hexacarbonyls ($M(CO)_6$, $M = Mo$ or W) in the next step yielding anionic nanoclusters $[M_6I_{14}]^{2-}$, the size and composition of which are strictly dictated by the nanotube cavity, as demonstrated by aberration corrected high resolution transmission electron microscopy (AC-HRTEM), scanning transmission electron microscopy (STEM) and energy dispersive X-ray (EDX) spectroscopy. Atoms in the nanoclusters $[M_6I_{14}]^{2-}$ are arranged in a perfect octahedral geometry and can engage in further chemical reactions within the nanotube, either reacting with each other leading to a new polymeric phase of molybdenum iodide $[Mo_6I_{12}]_n$, or with hydrogen sulphide gas giving rise to nanoribbons of molybdenum/tungsten disulphide $[MS_2]_n$ in the third step of the synthesis. Electron microscopy measurements demonstrate that the products of the multi-step inorganic transformations are precisely controlled by the SWNT nanoreactor, with complementary Raman spectroscopy revealing the remarkable property of SWNT to act as a reservoir of electrons during the chemical transformation. The electron transfer from the host-nanotube to the reacting guest-molecules is essential for stabilising the anionic metal iodide

nanoclusters and for their further transformation to metal disulphide nanoribbons synthesised in the nanotubes in high yield.

Keywords: Carbon Nanotube, Charge Transfer, Nanoparticle, Nanoreactor, Nanoribbon

Single-walled carbon nanotubes (SWNT) are among the most effective and universal containers for molecules. Provided that the internal diameter of the host-nanotube is wider than the critical diameter of the guest-molecule, the insertion of molecules into SWNT is spontaneous and, in some cases, such as fullerenes and their derivatives, irreversible due to the ubiquitous van der Waals forces dominating the host-guest interactions between the nanotube and molecules [1]. Fullerenes [2,3] or organic molecules [4-10] encapsulated in SWNT can then be triggered to react inside the nanotube to form unusual oligomers and polymers [11-13], graphene nanoribbons [14-16], nanotubes [8,17] or extraordinary molecular nanodiamonds [9]. These examples clearly demonstrate the use of SWNT as nanoscale chemical reactors, where the structure of the macromolecular product can be precisely controlled by spatial confinement of the reactions in the nanotube channel.

In contrast to organic molecules, the controlled chemical transformations of inorganic compounds in SWNT are significantly less explored. The challenges of inorganic synthesis in nanotubes are exemplified by metal hexacarbonyl complexes $M(CO)_6$ (where M is a transition metal) – these geometrically ideal guest-molecules for nanotubes with diameters between 1.3-1.5 nm readily convert at elevated temperatures into metallic nanoclusters consisting of 30-60 metal atoms inside SWNT, possessing a clean surface and unprecedented stability for such tiny sizes, interacting strongly with nanotube interior [18-20] and showing promise for applications in catalysis [21]. Unfortunately, metallic bonding lacks directionality and is highly labile compared to covalent bonding, generally resulting in a non-uniform distribution of sizes and variations in the shapes of the metal clusters synthesised in SWNT [18], in stark contrast to the well-defined products synthesised from organic molecules in SWNT. At this tiny scale (nm or sub-nm cluster diameters) any structural inhomogeneity in the sample inevitably leads to non-uniform physicochemical properties, since even the smallest changes in the size and shape of clusters will have drastic effects on their properties [22]. As a consequence, a complete understanding of the mechanisms of nanocluster-nanotube interactions is significantly hindered [19,20], and thus any development of the practical applications of metal nanoclusters in nanotubes, such as in catalysis or electronic devices, is severely compromised by the lack of a well-defined structural interface between the host-nanotube and the guest-molecules.

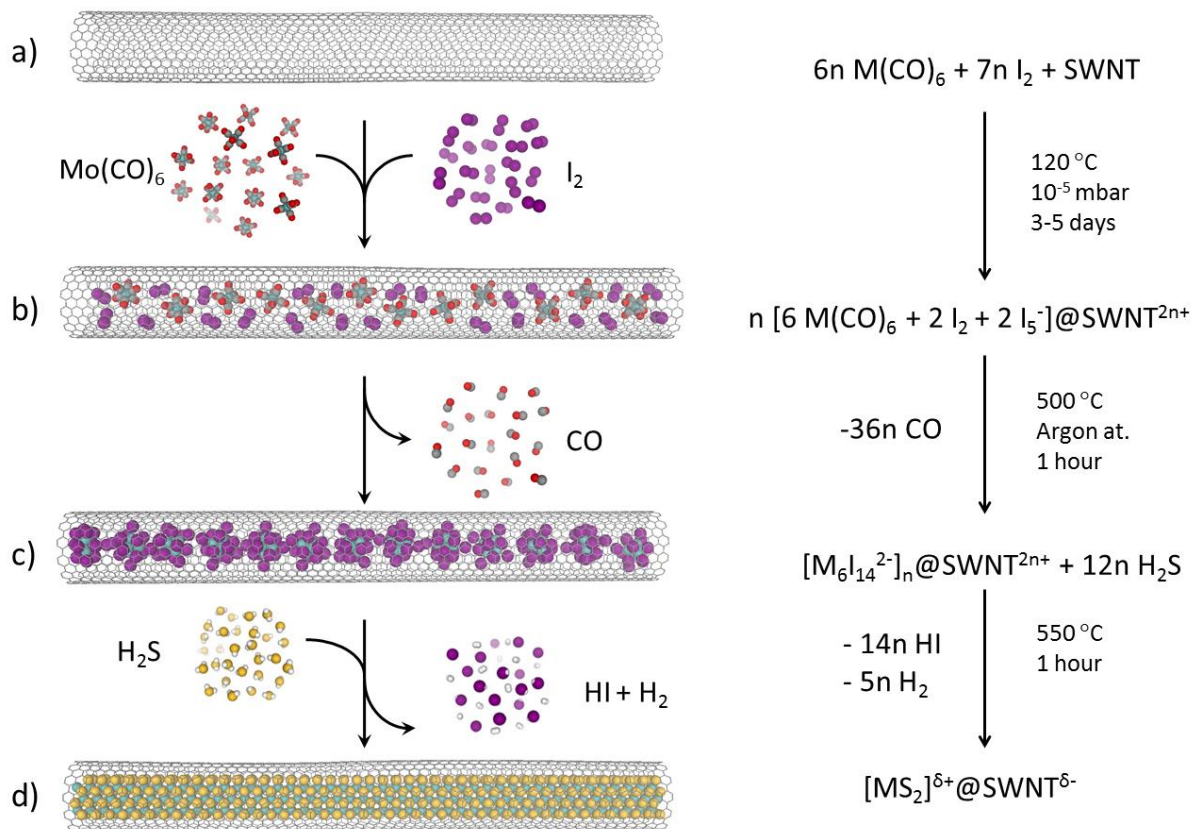


Figure 1. Multi-step inorganic synthesis performed in carbon nanotubes: (a) encapsulation and (b) conversion of metal carbonyl and iodine molecules into (c) metal iodide nanoclusters $[M_6I_{14}]^{2-}$, where $M = \text{Mo}$ or W , followed by (d) reaction of the nanoclusters with H_2S yielding metal sulphide nanoribbons $[MS_2]_n$, where $M = \text{Mo}$ or W (for WS_2 $\delta < 1$, and for MoS_2 $\delta = 0$).

While SWNT are already used as very effective nanoreactors for organic reactions where chemo-, regio- or enantio-selectivity can be tuned as a result of confinement in carbon nanotubes [23-25], inorganic synthesis in carbon nanotubes yielding materials with well-defined elemental composition, stoichiometry and structure, still remains a significant challenge, [26] with all currently known inorganic reactions in SWNT producing either polymeric ionic crystals of $[M_xA_y]_n$ type, where M is a cation and A is an anion, of varied lengths and widths (determined primarily by the dimensions of the nanotube), or discrete clusters with poorly defined size and shape, similar to those of transition metals mentioned above. In this study, we perform the first multi-step inorganic synthesis inside carbon nanotubes. We demonstrate that the products are synthesised with atomically precise stoichiometry in the SWNT cavity, and discover the unexpected ability of the nanotube to act as an electrically active host-structure during the synthesis – a new feature of SWNT in the context of nanoreactors – which appears to be essential for stabilisation of the ionic products of the reaction.

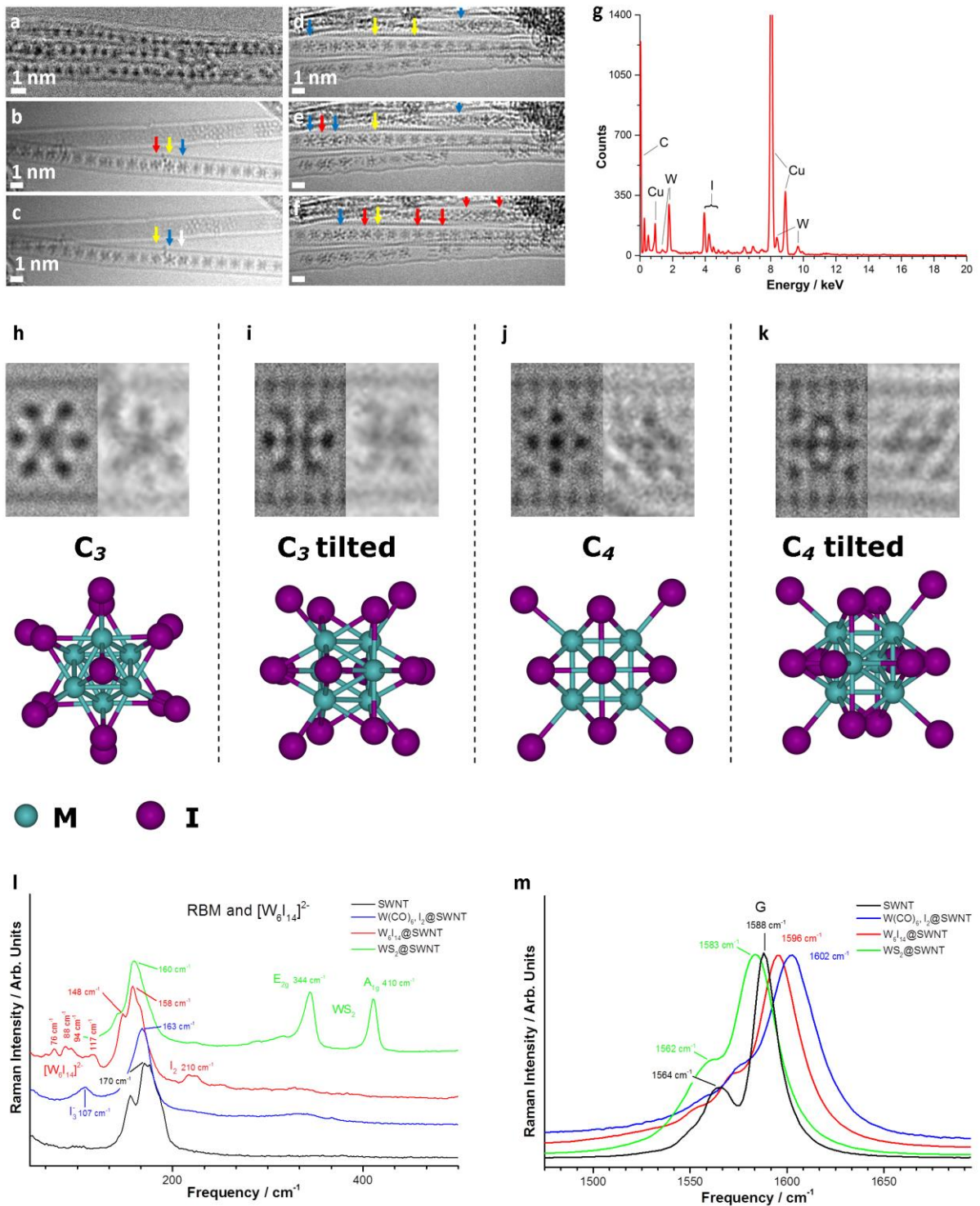


Figure 2. (a) 100 kV HRTEM and (b-f) 80kV AC-HRTEM images of $n\text{-}[W_6I_{14}]^{2-}@SWNT^{2n+}$ demonstrating the tumbling motion of metal clusters over time (marked by arrows). (g) The EDX spectrum confirms the elemental composition of the clusters. Please note that the Cu peaks are due to the TEM specimen grid. (h-k) High magnification images of the four principal projections of octahedral $[W_6I_{14}]^{2-}$ and their corresponding atomic models. (l) Raman spectra in the low-frequency region showing the bands of the products formed inside the nanotubes at each stage of the multi-step synthesis (polyiodide chains – blue; $[W_6I_{14}]^{2-}$ nanoclusters – red; $[WS_2]_n$ nanoribbons – green), and (m) a strong blue shift of the Raman G-band of SWNT indicative of the positive charge on SWNT due to the electron transfer to the guest-species polyiodide chains – blue or metal iodide nanoclusters –

red. A small red shift of the G band in the case of $[\text{WS}_2]_n@ \text{SWNT}$ – green, indicates the further transfer of electrons from the $[\text{WS}_2]_n$ nanoribbon to the SWNT, i.e. the formation of $[\text{WS}_2]_n^{\delta+}@ \text{SWNT}^{\delta-}$, consistent with the known electron donor properties of WS_2 .

To explore the potential for the assembly of inorganic nanoclusters with well-defined structure and composition, we introduced an additional element, iodine, into SWNT, with the encapsulated metal carbonyl complex $\text{M}(\text{CO})_6$ ($\text{M} = \text{W}$ or Mo ; Fig 1b). Being significantly more directional than metal-metal bonding, the metal-halogen bonds are expected to direct the atoms into well-structured nanoclusters, with a more strictly defined shape, size and atomic structure than in the case of metallic clusters. In contrast to $\text{M}(\text{CO})_6$ that interacts with SWNT by van der Waals forces with little or no contribution of electron transfer, the electron-accepting halogen I_2 is known to withdraw a substantial amount of electronic density from the nanotube [27,28], thus causing a significant blue-shift of the G-mode in the Raman spectra of SWNT co-filled with $\text{M}(\text{CO})_6$ and I_2 in our experiments (Figs 2m and 3j). As a result, some I_2 guest-molecules convert to polyiodide chains I_n^- within SWNT that contribute new low-frequency Raman bands (Fig 2l and 3k) in the range between $100 - 110 \text{ cm}^{-1}$, which is consistent with the previous observations for polyiodides in SWNT [27,28]. Therefore, SWNT co-filled with $\text{M}(\text{CO})_6$ and I_2 can be described more accurately as $m \cdot [\text{M}(\text{CO})_6 + \text{I}_n^-]@ \text{SWNT}^{m+}$, so that the host-nanotube serves not only as a container for the molecules, but also as a donor of electrons. The co-confinement of hexacarbonyl complexes with metal atoms in the oxidation state of zero and polyiodide within same narrow channel of SWNT creates an ideal starting point for an inorganic chemical reaction between the metal and halogen. Indeed, a mere temperature increase triggers a drastic chemical transformation in $m \cdot [\text{M}(\text{CO})_6 + \text{I}_n^-]@ \text{SWNT}^{m+}$ (Fig 1b,c) as indicated by clear changes in the Raman spectra, where the bands associated with polyiodide are replaced by a new set of bands at lower frequencies indicating a formation of new inorganic species in SWNT nanoreactors (Fig 2l and 3k). High-resolution transmission electron microscopy (HRTEM) imaging of nanotubes after the heat treatment reveals chains of discrete 1 nm clusters uniformly distributed along the nanotube channel (Fig 2a and 3a), which are in stark contrast to the irregular metallic clusters randomly positioned in SWNT that form from $\text{M}(\text{CO})_6$ under similar conditions [18]. Aberration-corrected (AC) HRTEM imaging demonstrates a surprisingly well-defined atomic structure of the nanoclusters with a polyhedral geometry which appears to be virtually the same for Mo- and W-containing species (Fig 2h-k and 3c-g). Energy dispersive X-ray (EDX) spectra recorded for small bundles (3-5 nanotubes) filled with the nanoclusters indicates the atomic ratio of M:I to be approximately 3:7 (Fig 2g and 3i), and time-series imaging shows that the metal iodide nanoclusters freely translate and rotate within the nanotube, behaving as discrete species, not bonded to each other. Such behaviour is surprising since metal iodides typically form polymeric structures due to the tendency of iodide anions to bridge between metal atoms within the crystal, including metal iodide crystals inside nanotubes [29,30]. The apparent unrestricted tumbling of the metal iodide nanoclusters in SWNT is different to the dynamics of metallic clusters under the same conditions that usually exhibit a slower motion [18,19], thus making imaging of atomic structures of metal iodides challenging, particularly in the case of Mo (Fig 3b). However, the tumbling motion of the nanoclusters can be beneficial for understanding their 3D structures in HRTEM analysis, as a rotating nanocluster allows direct visualisation of all of its principal projections by time-series imaging of the same cluster within the nanotube (Fig 2b-f) without any need to tilt the specimen. Extensive AC-HRTEM image acquisition combined with structural modelling and HRTEM image simulations

(Supporting Information file) strongly indicate a highly symmetrical octahedral arrangement of metal atoms with eight μ^3 -I bridging I-atoms capping each face of the octahedron, and a further six μ^1 -I atoms coordinated to each metal (Fig 2h-k), yielding a shape topologically similar to polyoxometalate (POM) clusters [31,32] and an overall stoichiometry M_6I_{14} agreeing well with the EDX elemental analysis. The new set of low-frequency Raman bands in the 50 – 130 cm^{-1} range emerging as a result of polyiodide and metal complex reaction in SWNT is consistent with the anionic form of the clusters $[W_6I_{14}]^{2-}$ (Fig 2l) and $[\text{Mo}_6I_{14}]^{2-}$ (Fig 3k), whereas the G-band is significantly blue-shifted for both clusters with respect to empty nanotubes (Fig 2m and 2j), suggesting that the electrons abstracted from SWNT by iodine in the first step of the inorganic synthesis have been passed onto the metal iodide nanocluster such that the host-nanotube remains positively charged, and the overall structure being described as $n \cdot [\text{M}_6\text{I}_{14}]^{2-} @ \text{SWNT}^{2n+}$ (Fig 1c). A typical nanotube with an average diameter of 1.4 nm utilised in these experiments provides a near ideal fit for anionic $[\text{M}_6\text{I}_{14}]^{2-}$ clusters and simultaneously acts as a counter-ion balancing the charge, with the terminal μ^1 -I atoms engaged in direct contact with the inner SWNT sidewall (Figure 1). Because the μ^1 -I atoms are not expected to form any directional interactions with sp^2 -carbon atoms of the SWNT, the energy difference between dissimilar orientations of $[\text{M}_6\text{I}_{14}]^{2-}$ is not expected to be sufficiently high to hinder the tumbling motion of the nanoclusters observed in time-series HRTEM imaging (Supporting Videos 1 and 2).

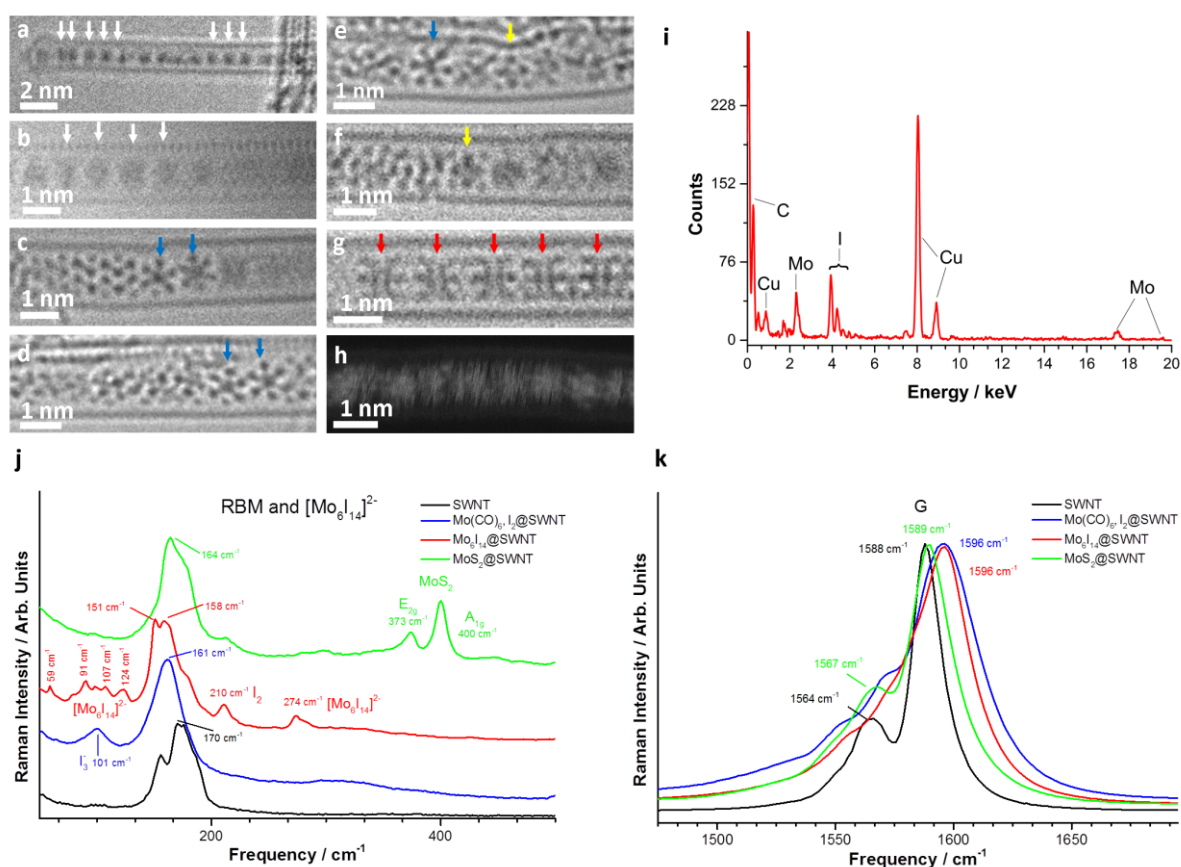


Figure 3. (a) 100 kV HRTEM and (b-g) 80 kV AC-HRTEM images of $n \cdot [\text{Mo}_6\text{I}_{14}]^{2-} @ \text{SWNT}^{2n+}$ demonstrating the tumbling motion of metal clusters over time (marked by arrows) and (h) a scanning transmission electron microscopy (STEM) annular dark field (ADF) image taken at 60 kV

illustrating the presence of heavy elements inside the nanotube. Please note that the fast motion of the nanoclusters during the slow STEM acquisition lead to unavoidable smearing and blurring of the contrast. (i) The EDX spectrum confirms the elemental composition of the clusters. Please note that the Cu peaks are due to the TEM specimen grid. (j) Raman spectra in the low-frequency region shows bands of the products formed inside nanotube at each stage of the multi-step synthesis (polyiodide chains – blue; $[\text{Mo}_6\text{I}_{14}]^{2-}$ nanoclusters – red; $[\text{MoS}_2]_n$ nanoribbons – green), and (k) the blue shift of the Raman G-band of the nanotube indicating the positive charge on the SWNT due to the electron transfer to the polyiodide and nanocluster guest-species. No electron transfer is observed for $[\text{MoS}_2]_n@SWNT$ relative to SWNT.

The EDX spectra of the metal iodide nanoclusters in nanotubes clearly distinguish W and Mo in $n\cdot[\text{W}_6\text{I}_{14}]^{2-}@SWNT^{2n+}$ (Fig 2g) and $n\cdot[\text{Mo}_6\text{I}_{14}]^{2-}@SWNT^{2n+}$ (Fig 3i) respectively, but the two types of clusters are structurally indistinguishable in HRTEM images due to the very similar ionic diameters of Mo and W, leading to near identical lengths of W-I and Mo-I bonds and thus the same sizes and shapes of the $[\text{W}_6\text{I}_{14}]^{2-}$ and $[\text{Mo}_6\text{I}_{14}]^{2-}$ clusters. Interestingly, detailed comparison of the motion of the nanoclusters highlights significant differences in their dynamic behaviours under the 80 keV electron beam: after extensive irradiation $[\text{Mo}_6\text{I}_{14}]^{2-}$ appears to transform from discrete, highly mobile clusters into a static polymeric structure (Fig 4a and Supporting Video 2), whereas $[\text{W}_6\text{I}_{14}]^{2-}$ remains largely unchanged under similar conditions (Supporting Video 1). Recently, we have demonstrated that the electron beam of the TEM can play the role of an effective stimulus of chemical transformations, primarily due to the transfer of kinetic energy from the fast electrons of the e-beam to atoms of the molecule [19,20,33]. Generally, if the amount of transferred energy from the e-beam to an atom exceeds the threshold of displacement of the atom and dissociation of the chemical bonds, the atom is knocked out of the molecule [34] and a chain of chemical transformations is triggered by the e-beam.

$$T = \frac{2 \cdot M \cdot E (E + 2m_e \cdot c^2)}{(M + m_e)^2 \cdot c^2 + 2M \cdot E}$$

Equation 1

The maximum amount of energy transferred from the e-beam to the atom (T) depends on the energy of incident electrons (E), which is controlled by the accelerating voltage of TEM (80 kV in our case). Most importantly, T is inversely proportional to the atomic weight of the element (M), so that under typical TEM imaging conditions lighter elements within the molecule are significantly more susceptible to the knock-on effect, as for example demonstrated for the protium and deuterium isotopes of hydrogen in organic molecules [31] (other parameters in Equation 1 are m_e – mass of electron and c – speed of light).

Specifically, since Mo is a significantly lighter atom than W or I, it receives the highest amount of kinetic energy of 1.97 eV from the e-beam, as compared to only 1.03 eV for W or 1.00 eV for I. The main outcome of the fact that twice as much energy is transferred from the e-beam to Mo as compared to W is a significantly increased likelihood for Mo to be displaced by the 80 keV e-beam from its equilibrium position in the metal iodide nanocluster (Fig. 4e) and thus a potential rupture of Mo-I bonds, the weakest of which is the single bond with the terminal μ_1 -I atom (Fig 4b). A

coordinatively unsaturated Mo-cation formed in this process requires completion of its coordination environment which can be achieved by sharing a μ^3 -I-atom of a neighbouring cluster (Fig. 4e), which in effect leads to polymerisation of discrete $[\text{Mo}_6\text{I}_{14}]^{2-}$ clusters into a continuous crystal with a repeating unit $[\text{Mo}_6\text{I}_{12}]_n$ (Fig 4c,d). Such a structure is not known for any form of molybdenum iodide in the bulk form, and topologically $[\text{Mo}_6\text{I}_{12}]_n$ is much closer to the polymeric mixed molybdenum iodides/sulphides $\text{Mo}_6\text{S}_x\text{I}_y$, where S-atoms substitute some of the I-atoms in the coordination sphere of Mo [35-37]. Therefore, the formation of $[\text{Mo}_6\text{I}_{12}]_n@\text{SWNT}$ observed in AC-HRTEM is a combined result of the knock-on effect of the e-beam and the confinement effect of the nanotube directing the growth of this unusual structure.

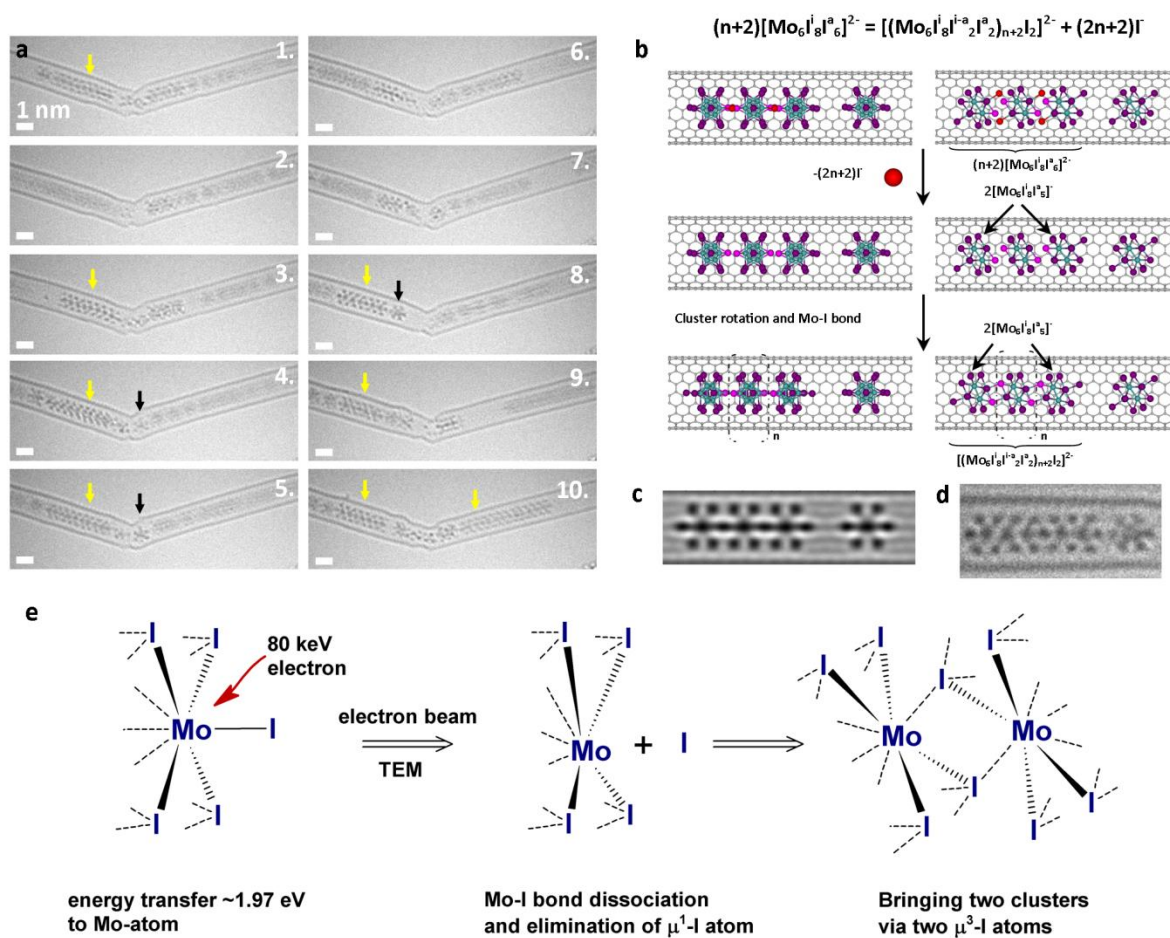


Figure 4. (a) 80 kV AC-HRTEM time series images showing the transformation of $n \cdot [\text{Mo}_6\text{I}_{14}]^{2-}@\text{SWNT}^{2n+}$ to $[\text{Mo}_6\text{I}_{12}]_n@\text{SWNT}$ (yellow arrows) under 80 keV e-beam. (b) Structural diagram of a reaction of iodide elimination and formation of polymeric form of molybdenum iodide $[\text{Mo}_6\text{I}_{12}]_n$. (d) High magnified 80 kV AC-HRTEM images of $[\text{Mo}_6\text{I}_{12}]_n@\text{SWNT}$ and (c) corresponding image simulation. (e) Schematic diagram illustrates the kinetic energy transfer from the incident 80 keV electron to the Mo-atom (up to 1.97 eV according to Equation 1) which can trigger dissociation of the Mo-I bond with μ^1 -I followed by μ^3 -I linking of the neighbouring clusters and thus leading to the polymeric molybdenum iodide structure $[\text{Mo}_6\text{I}_{12}]_n$ observed in AC-HRTEM.

The highly dynamic behaviour of the metal iodide nanoclusters and the structural transformation of $[\text{Mo}_6\text{I}_{14}]^{2-}$ under the e-beam clearly indicates that these guest-species can be activated for further chemical transformations inside nanotubes. Spatial restriction of the internal cavity of SWNT has previously been employed as a powerful template to direct chemical reactions along a specific pathway [5-17], but with the size of the metal iodide nanocluster effectively filling the entire cross-section (Fig 2 and 3), there is a risk of blocking the SWNT channel that would severely hinder diffusion of any other reactant into the nanotube and thus potentially prohibit any further chemical transformations within the SWNT. In order to assess a potential for multi-step chemical reactions within the SWNT nanoreactor, H_2S gas has been introduced into $n\cdot[\text{M}_6\text{I}_{14}]^{2-}@\text{SWNT}^{2n+}$ (Fig 1c,d). Despite the fact that the nanotubes are densely filled with metal iodide clusters with no physical space available for H_2S to enter and pass between the nanoclusters, the clusters transform into continuous nanoribbon-shaped sulphides $[\text{MoS}_2]_n$ (Fig 5a,e,f) and $[\text{WS}_2]_n$ (Fig 6a,b,c) with remarkable efficiency, where virtually all metal iodide nanoclusters are converted into the metal sulphide nanoribbons according to EDX and HRTEM (Figure 6) even after 1 hour exposure to H_2S . Molybdenum and tungsten sulphide nanoribbons have recently attracted significant attention due to a range of functional electronic properties. In our experiments, the transformation of $n\cdot[\text{M}_6\text{I}_{14}]^{2-}@\text{SWNT}^{2n+}$ to $[\text{MS}_2]_n@\text{SWNT}$ proceeds smoothly and efficiently, with no loss of material from SWNT and with most nanotubes filled with well-ordered crystalline structures of hexagonal MoS_2 and WS_2 (Fig 5 and 6, Supporting video 3) similar to those reported in the literature [38,39]. The width of the nanoribbon is strictly controlled by the nanotube diameter, with their edges adopting a perfect zigzag conformation in most cases (Fig 5e and 6a), but occasional edge defects were found in some nanoribbons (Fig 5f). It is logical to suggest that H_2S gas starts reacting with $[\text{M}_6\text{I}_{14}]^{2-}$ nanoclusters positioned at the termini of SWNT, so that two $[\text{MS}_2]_n$ nanoribbons grow from the termini of SWNT towards the nanotube centre. Naturally, any discrepancies in the initial growth conditions of the two nanoribbons propagating towards each other would lead to an incommensurate structure at the point they merge and hence a twisted defect, such as observed in Fig 5f. The edge defect is caused by a mismatch of the nanoribbon structures on the left and on the right (Fig 5f), and appears to be unable to anneal due to the space limitation imposed by the host-nanotube and remains highly dynamic with nanoribbon atoms continually changing between the structure of $[\text{MS}_2]_n$ with rows of hexagons parallel to the SWNT axis (frame 3, Fig 5f) and $[\text{MS}_2]_n$ with twisted rows of hexagons (frame 4, Fig 5f) due to the presence of under-coordinate labile metal-atoms (Supporting Video 3). In contrast, the defect-free zigzag edges remain almost completely static under similar conditions.

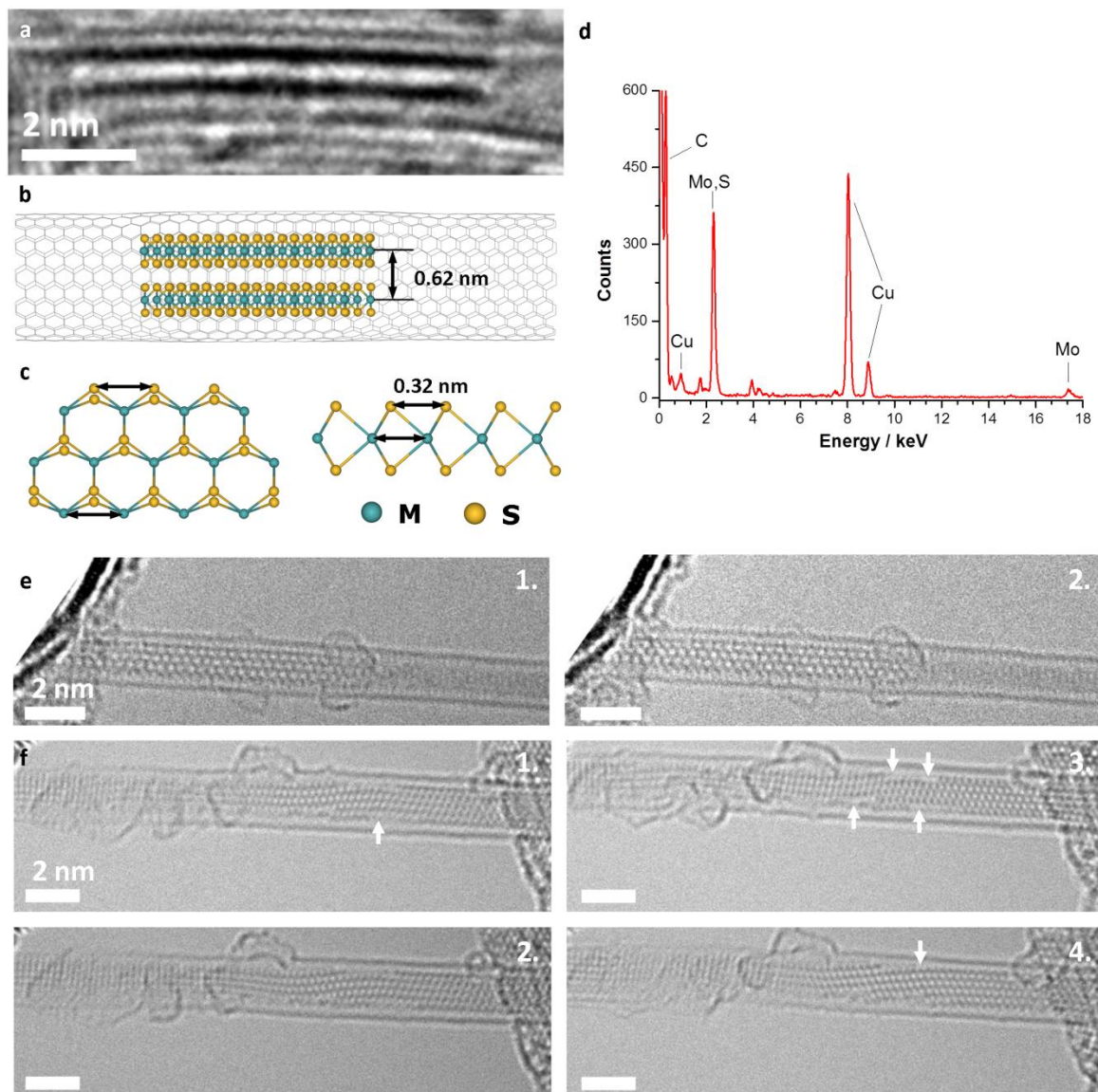


Figure 5. (a) 100kV HRTEM image of $[\text{MoS}_2]_n@$ SWNT with the nanoribbon in edge-on orientation. Structural diagrams of $[\text{MoS}_2]_n$ in (b) edge-on and (c) face-on orientations. (d) The EDX spectrum confirms the composition of the nanoribbon in the nanotube as MoS_2 . Please note that the Cu peaks are due to the TEM specimen grid. High magnification 80 kV AC-HRTEM micrographs illustrating a nanoribbon with (e) a perfect zigzag edge and (f) a defective zigzag edge undergoing structural transformations under the e-beam.

EDX spectroscopy confirms almost complete removal of iodine atoms from the nanotubes in the final step of the synthesis, and shows the atomic ratio of metal to sulphur as 1:2, supporting the formation of stoichiometric metal sulphides within SWNT. The negatively charged metal iodide nanoclusters formed in the second step of the synthesis require the host-nanotube to donate electrons and to become positively charged in order to balance the negative charges of the guest-species, which leads to the significant blue shift of the SWNT G-band observed by Raman

spectroscopy (Fig 2m and 3j). However, unlike $[M_6I_{14}]^{2-}$ nanoclusters, $[MS_2]_n$ nanoribbons are essentially charge-neutral, so that no electronic contribution of SWNT is required to balance the charge of the guest-species (Fig 1d). Indeed, upon formation of the $[MoS_2]_n@SWNT$, the G-band of the nanotubes is shifted back to its original position as it was in empty SWNT which indicates no electron transfer from SWNT to $[MoS_2]_n$ or *vice versa*. Interestingly, in the case of tungsten disulphide we observe a small red shift of the G-band of the nanotubes subsequent to the formation of $[WS_2]_n@SWNT$ relative to the empty nanotube, indicating a small, but measureable, partial transfer of electrons from the electron donor guest- $[WS_2]_n$ nanoribbon to the now electron-acceptor SWNT. This indicates that, unlike MoS_2 , WS_2 acts as a weak electron donor to the nanotube consistent with the reported differences in the valence band maximum levels and thus propensity of the metal sulphide to donate electrons to the nanotube, where WS_2 has been calculated to be 0.39 eV higher than MoS_2 [40]. In either case, the electrons ‘borrowed’ from the host-nanotube by polyiodide chains in the first step (Fig 1a,b) appear to be critically important for stabilisation of anionic $[M_6I_{14}]^{2-}$ nanoclusters in the second step (Fig 1c), but are effectively returned back to the host-nanotube in the third step of the reaction where $[M_6I_{14}]^{2-}$ convert to effectively charge-neutral $[MS_2]_n$ (or slightly positively-charged in the case of $[WS_2]_n^{\delta+}$) (Fig 1d). This demonstrates a remarkable property of carbon nanotubes to act not only as nanoreactors constraining the space around the chemical reaction and templating the formation of nanoclusters or the growth of nanoribbons, but also as electrically active host-structures lending their electrons when they are required for a chemical reaction to occur inside SWNT, and retrieving electrons back when they are no longer required by the guest-species.

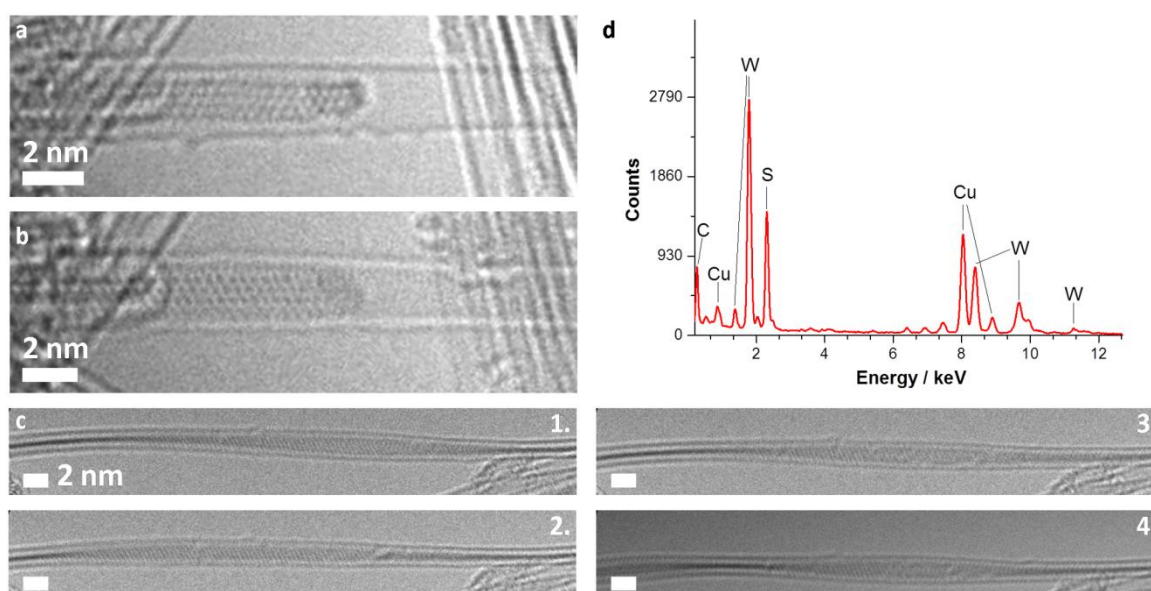


Figure 6. (a, b) AC-HRTEM images showing of $[WS_2]_n@SWNT$, and (c) a time series of images illustrating the rotation of the nanoribbon inside the nanotube. (d) The EDX spectrum confirms elemental composition of the nanoribbon.

In summary, carbon nanotubes are becoming an increasingly important class of nanoscale containers and reactors, where the pathways of chemical reactions can change significantly as a result of the restricted space of the reaction [5-17], or due to the interactions between the reactant molecules or catalyst particles with the host-nanotube [23,24]. Being highly conducting and having a symmetric distribution of filled and empty electronic states, SWNT possess remarkable electric properties and a unique ability to donate or accept electrons, which make nanotubes distinct among other nanocontainers and nanoreactors. Even subtle electron transfer between a catalyst and carbon nanotube, for example, have a potential to change the rates or selectivities of single-step chemical reactions [41]. In this study, we carried out the first multi-step synthesis within a carbon nanotube by transforming molecules ($M(CO)_6$ and I_2) to nanoclusters ($[M_{6|14}]^{2-}$), and subsequently nanoclusters to nanoribbons ($[MS_2]_n$) within the cavity of the same nanotube. A combination of HRTEM imaging, EDX and Raman spectroscopy was employed to follow the multi-step synthesis inside the nanotube to reveal that the SWNT is engaged in significant electron transfer with the guest-species at different stages of the synthesis which is necessary to promote the reactions. The SWNT serve as reservoirs of electrons that can be donated to products of the reactions (e.g. nanoclusters), stabilising them within the SWNT cavity and thus improving the efficiency of their formation and subsequent conversion to MS_2 nanoribbons in the final stage of the multi-step synthesis. We have found the direct synthesis of $[MS_2]_n@SWNT$ from $M(CO)_6@SWNT$ to be significantly less efficient leading to only a small number of nanotubes (c.a. 5%) with $[MS_2]_n$ nanoribbons, as at elevated temperatures metal carbonyl molecules interacting with the SWNT by weak van der Waals forces are significantly more likely to exit from the SWNT channel than the $[M_{6|14}]^{2-}$ nanoclusters held within the nanoreactors by strong Coulombic forces. The demonstration of active electric participation of the host-nanotube in chemical reactions of the guest-species can be harnessed to direct the synthesis of desired products, and in future can be employed to design and fabricate new types of inorganic materials with precisely controlled structure and properties. The development of new methodologies for the efficient removal of the inorganic products from the host-nanotubes, for example based on the extraction of the products or the selective oxidation of SWNT, may be seen as the next important challenge in this field of research. However, electronically, optically and magnetically active inorganic nanostructures fabricated within the nanoscale containers, such as SWNT in our study, are already 'pre-packaged' for a wealth of new practical applications, for example in catalysis and electrocatalysis, field-effect transistors, sensors and spintronic devices, where the host-nanotube connects the inorganic guest-nanostructures with the macroworld and thus enables efficient harnessing of their functional properties.

Experimental Section

Materials

Arc-discharge SWNTs (average $d_{NT}=1.4$ nm, purity 90%) were purchased from *Helix Material Solutions*. Mo and W hexacarbonyls (purity \geq 98 and 99%, respectively) were purchased from *Acros Organics*, I_2 (purity \geq 99.8%) and H_2S gas (purity \geq 99.5%) were purchased from *Fischer Scientific* and *Sigma-Aldrich*, respectively and all reagents were used without further purification.

Encapsulation of $M(\text{CO})_6$ or $M(\text{CO})_6$ and I_2 together into CNTs

SWNTs were heated in air at 380 °C for 20 minutes to open their closed ends and remove any adsorbed water. Freshly opened SWNTs (5 mg) were mixed with a large excess of precursor molecules *i.e.* $M(\text{CO})_6$ or $M(\text{CO})_6$ and I_2 ($M=\text{Mo}, \text{W}$) and the resultant mixture was sealed in a Pyrex glass vessel ($d=10$ mm, $l=10$ cm) under high vacuum (10^{-6} mbar). The sealed vessel was placed into a preheated box furnace ($T=120$ °C) for several days depending on the experiment. Prior to opening the Pyrex glass vessel was taken out from the furnace and cooled down by immersing it into an ice-water bath for 5 minutes.

Chemical transformation of $M(\text{CO})_6$ and I_2 precursor molecules into $[\text{M}_6\text{I}_{14}]^{2-}$ in CNTs

The SWNTs containing $M(\text{CO})_6$ and I_2 precursor molecules were sealed in a Pyrex glass vessel which was first evacuated (10^{-6} mbar) then filled with Ar gas (0.7 bar). The sealed Pyrex glass tube was then transferred into a preheated furnace (500 °C). After an hour the sample was taken out from the furnace and left on an asbestos tile to cool down to room temperature.

Formation of $[\text{MS}_2]_n$ nanoribbons in SWNTs with H_2S gas

The SWNTs containing $M(\text{CO})_6$ or $M(\text{CO})_6$ and I_2 precursor molecules were transferred into a quartz boat and placed into a closed ceramic working tube ($d=25$ mm, $l=60$ cm) located within a tube furnace. In a typical experiment the system was purged at room temperature with Ar then H_2S for 1 hour each at ~ 15 mL/min. The furnace was heated up to the desired reaction temperature, typically 550 °C (25 °C/min), which was maintained along with a moderate (~ 15 mL/min) H_2S gas flow for 2 hours. Then the furnace was cooled down (25 °C/min) to room temperature under Ar gas flow. The exhaust of the system was released into the fume hood through a bleach bath in order to neutralise any excess H_2S .

Transmission electron microscopy and energy-dispersive X-ray spectroscopy

Prior to investigation, the carbon nanotube samples (~ 0.5 mg) were dispersed in isopropyl alcohol (2 mL) using an ultrasonic bath (~ 15 min). Subsequently, a few drops were dropcast onto a copper TEM grid coated with lacy carbon film (Agar Scientific) to support the carbon nanotubes.

Conventional TEM images and EDX spectra were acquired with an JEOL 2100F microscope with a Schottky electron gun operated at 100 kV accelerating voltage at the Nottingham Nanotechnology and Nanoscience Centre, University of Nottingham, UK.

Aberration-corrected high-resolution TEM analysis was carried out on an imaging-sideaberration corrected (CEOS type hexapole corrector) FEI Titan 80–300 transmission electron microscope operated at 80 kV at the Central Facility of Electron Microscopy, Ulm University, Germany, and scanning transmission electron microscopy (STEM) imaging was performed on a JEOL 2100F with a cold field-emission gun and an aberration DELTA-corrector for the illumination system operated at

60 kV at the National Institute of Advanced Industrial Science and Technology (AIST), Tsukuba, Japan.

Transmission Electron Microscopy image simulation

Representative image simulations were created with the open source SimulaTEM software using an accelerating voltage of 80 kV with $C_s = 0.001$ mm and -20 nm defocus. Simulation tableaux were generated from rotation arrays of the $[\text{Mo}_6\text{I}_{14}]^{2-}$ ion produced in the commercial program Crystalmaker. Details for image simulation are presented in the Supporting Information file (S1).

Raman spectroscopy

Prior to investigation, the carbon nanotube samples (~0.5 mg) were dispersed in isopropyl alcohol (2 mL) using an ultrasonic bath (~15 min). Subsequently, the dispersion was drop-casted onto a Si(100) wafer to support the carbon nanotubes.

The Raman spectra were recorded on a Horiba–Jobin–Yvon LabRAM HR confocal Raman Microscope equipped with a Synapse CCD detector at the Nottingham Nanotechnology and Nanoscience Centre, University of Nottingham. The Raman measurements were performed at room temperature using an excitation laser wavelength of 532 nm operating at a power of ca. 4 mW (10%) and a 600 lines/mm grating. The Raman shift was calibrated using the Raleigh peak and the 520.7 cm^{-1} silicon line from an Si(100) reference sample.

Associated content

Supporting Information

The Supporting Information is available free of charge on the ACS Publications website at DOI:

S1 HRTEM image simulation, S2 AC-STEM, S3 additional HRTEM and AC-HRTEM imaging, and S4 overall process map of inorganic synthesis in nanotubes, Video 1 dynamic behaviour of tungsten iodide clusters under 80 keV e-beam, Video 2 dynamic behaviour of molybdenum iodide under 80 keV e-beam, Video 3 transformations of an edge defect in molybdenum disulphide nanoribbon under 80 keV e-beam.

Author information

Corresponding author

* Andrei.Khlobystov@nottingham.ac.uk

Notes

The authors declare no competing financial interests.

Acknowledgements

JB and UK acknowledge support of the German Research Foundation (DFG) and the Ministry of Education and Research of the State of Baden-Württemberg within the SALVE project. ZL and KS acknowledge support of the JST Research Acceleration Program and a Grant-in-Aid for Scientific Research on Innovative Areas (MEXT KAKENHI Grant Number 25107003). AB, TWC, GAR, CS, ANK acknowledge support of the European Research Council (ERC) and Engineering and Physical Science Research Council (EPSRC), and the Nanoscale & Microscale Research Centre (NMRC) for access to instrumentation.

References:

1. Britz, D. A.; Khlobystov, A. N. *Chem. Soc. Rev.* **2006**, *35*, 637.
2. Chuvilin, A.; Khlobystov, A. N.; Obergfell, D.; Haluska, M.; Yang, S.; Roth, S.; Kaiser, U. *Angew. Chem. Int. Ed.* **2010**, *49*, 193.
3. Koshino, M.; Niimi, Y.; Nakamura, E.; Kataura, H.; Okazaki, T.; Suenaga, K.; Iijima, S. *Nature Chem.* **2010**, *2*, 117.
4. Okazaki, T.; Iizumi, Y.; Okubo, S.; Kataura, H.; Liu, Z.; Suenaga, K.; Tahara, Y.; Yudasaka, M.; Okada, S.; Iijima, S. *Angew. Chem. Int. Ed.* **2011**, *50*, 4853.
5. Botka, B.; Fuestoes, M. E.; Tohati, H. M.; Nemeth, K.; Klupp, G.; Szekrenyes, Z.; Kocsis, D.; Utczas, M.; Szekely, E.; Vaczi, T.; Tarczay, G.; Hackl, R.; Chamberlain, T. W.; Khlobystov, A. N.; Kamaras, K. *Small* **2014**, *10*, 1369.
6. Chamberlain, T. W.; Biskupek, J.; Rance, G. A.; Chuvilin, A.; Alexander, T. J.; Bichoutskaia, E.; Kaiser, U.; Khlobystov, A. N. *ACS Nano* **2012**, *6*, 3943.
7. Pollack, A.; Alnemrat, S.; Chamberlain, T. W.; Khlobystov, A. N.; Hooper, J. P.; Osswald, S. *Small* **2014**, *10*, 5077.
8. Lim, H. E.; Miyata, Y.; Kitaura, R.; Nishimura, Y.; Nishimoto, Y.; Irle, S.; Warner, J. H.; Kataura, H.; Shinohara, H. *Nature Commun.* **2013**, *4*, 2548.
9. Nakanishi, Y.; Omachi, H.; Fokina, N. A.; Schreiner, P. R.; Kitaura, R.; Dahl, J. E. P.; Carlson, R. M. K.; Shinohara, H. *Angew. Chem. Int. Ed.* **2015**, *54*, 10802.
10. Chamberlain, T. W.; Meyer, J. C.; Biskupek, J.; Leschner, J.; Santana, A.; Besley, N. A.; Bichoutskaia, E.; Kaiser, U.; Khlobystov, A. N. *Nature Chem.* **2011**, *3*, 732.
11. Britz, D. A.; Khlobystov, A. N.; Porfyrakis, K.; Ardavan, A.; Briggs, G. A. D. *Chem. Commun.* **2005**, 37.
12. Pagona, G.; Rotas, G.; Khlobystov, A. N.; Chamberlain, T. W.; Porfyrakis, K.; Tagmatarchis, N. *J. Am. Chem. Soc.* **2008**, *130*, 6062.
13. Allen, C. S.; Ito, Y.; Robertson, A. W.; Shinohara, H.; Warner, J. H. *ACS Nano* **2011**, *5*, 10084.
14. Chuvilin, A.; Bichoutskaia, E.; Gimenez-Lopez, M. C.; Chamberlain, T. W.; Rance, G. A.; Kuganathan, N.; Biskupek, J.; Kaiser, U.; Khlobystov, A. N. *Nature Mater.* **2011**, *10*, 687.
15. Talyzin, A. V.; Anoshkin, I. V.; Krashennikov, A. V.; Nieminen, R. M.; Nasibulin, A. G.; Jiang, H.; Kauppinen, E. I. *Nano Lett.* **2011**, *11*, 4352.
16. Chernov, A. I.; Fedotov, P. V.; Talyzin, A. V.; Lopez, I. S.; Anoshkin, I. V.; Nasibulin, A. G.; Kauppinen, E. I.; Obratsova, E. D. *ACS Nano* **2013**, *7*, 6346.
17. Shiozawa, H.; Pichler, T.; Gruneis, A.; Pfeiffer, R.; Kuzmany, H.; Liu, Z.; Suenaga, K.; Kataura, H. *Adv. Mater.* **2008**, *20*, 1443.
18. Chamberlain, T. W.; Zoberbier, T.; Biskupek, J.; Botos, A.; Kaiser, U.; Khlobystov, A. N. *Chem. Sci.* **2012**, *3*, 1919.
19. Zoberbier, T.; Chamberlain, T. W.; Biskupek, J.; Navaratnarajah, K.; Eyhusen, S.; Bichoutskaia, E.; Kaiser, U.; Khlobystov, A. N. *J. Am. Chem. Soc.* **2012**, *134*, 3073.

20. Lebedeva, I. V.; Chamberlain, T. W.; Popov, A. M.; Knizhnik, A. A.; Zoberbier, T.; Biskupek, J.; Kaiser, U.; Khlobystov, A. N. *Nanoscale* **2014**, *6*, 14877.
21. Chamberlain, T. W.; Earley, J. H.; Anderson, D. P.; Khlobystov, A. N.; Bourne, R. A. *Chem. Commun.* **2014**, *50*, 5200.
22. Lu, Y. Z.; Chen, W. *Chem. Soc. Rev.* **2012**, *41*, 3594.
23. Pan, X.; Bao, X. H. *Acc. Chem. Res.* **2011**, *44*, 553.
24. Serp, P.; Castillejos, E. *ChemCatChem* **2010**, *2*, 41.
25. Khlobystov, A. N. *ACS Nano*, **2011**, *5*, 9306.
26. Eliseev, A. A.; Chernysheva, M. V.; Verbitskii, N. I.; Kiseleva, E. A.; Lukashin, A. V.; Tretyakov, Y. D.; Kiselev, N. A.; Zhigalina, O. M.; Zakalyukin, R. M.; Vasiliev, A. L.; Krestinin, A. V.; Hutchison, J. L.; Freitag, B. *Chem. Mater.* **2009**, *21*, 5001.
27. Song, H.; Ishii, Y.; Al-Zubaidi, A.; Sakai, T.; Kawasaki, S. *Phys. Chem. Chem. Phys.* **2013**, *15*, 5767.
28. Grigorian, L.; Williams, K.; Fang, S.; Sumanasekera, G.; Loper, A.; Dickey, E.; Pennycook, S.; Eklund, P. *Phys. Rev. Lett.* **1998**, *80*, 5560.
29. Sloan, J.; Kirkland, A. I.; Hutchison, J. L.; Green, M. L. H. *Acc Chem. Res.* **2002**, *35*, 1054.
30. Eliseev, A. A.; Kharlamova, M. V.; Chernysheva, M. V.; Lukashin, A. V.; Tretyakov, Y. D.; Kumskov, A. S.; Kiselev, N. A. *Russ. Chem. Rev.* **2009**, *78*, 833.
31. Sloan, J.; Matthewman, G.; Dyer-Smith, C.; Sung, A. Y.; Liu, Z.; Suenaga, K.; Kirkland, A. I.; Flahaut, E. *ACS Nano* **2008**, *2*, 966.
32. Sloan, J.; Liu, Z.; Suenaga, K.; Wilson, N. R.; Panday, P. A.; Perkins, L. M.; Rourke, J. P.; Shannon, I. J. *Nano Lett.* **2010**, *10*, 4600.
33. Chamberlain, T. W.; Biskupek, J.; Skowron, S. T.; Bayliss, P. A.; Bichoutskaia, E.; Kaiser, U.; Khlobystov, A. N. *Small* **2015**, *11*, 622.
34. Skowron, S.T.; Lebedeva, I. V.; Popov, A. M.; Bichoutskaia, E. *Nanoscale* **2013**, *5*, 6677.
35. Karlin, K. D. *Progress in Inorganic Chemistry*; John Wiley & Sons, Inc.: Hoboken, NJ, USA, 2005.
36. Fedorov, V.; Mishchenko, A.; Fedin, V.; *Russ. Chem. Rev.* **1985**, *54*, 408.
37. Kirakci, K.; Cordier, S.; Shames, A.; Fontaine, B.; Hernandez, O.; Furet, E.; Halet, J. F.; Gautier, R.; Perrin, C. *Chemistry* **2007**, *13*, 9608.
38. Wang, Z.; Zhao, K.; Li, H.; Liu, Z.; Shi, Z.; Lu, J.; Suenaga, K.; Joung, S. K.; Okazaki, T.; Jin, Z.; Gu, Z.; Gao, Z.; Iijima, S. *J. Mater. Chem.* **2011**, *21*, 171.
39. Wang, Z.; Li, H.; Liu, Z.; Shi, Z.; Lu, J.; Suenaga, K.; Joung, S. K.; Okazaki, T.; Gu, Z.; Zhou, J.; Gao, Z.; Li, G.; Sanvito, S.; Wang, E.; Iijima, S. *J. Am. Chem. Soc.* **2010**, *132*, 13840.
40. Kang, J.; Tongay, S.; Zhou, J.; Li, J.; Wu, J. *Appl. Phys. Lett.* **2013**, *102*, 012111.
41. Serp, P.; Machado, B. *Nanostructured Carbon Materials for Catalysis*; Royal Society of Chemistry: Cambridge, UK, 2015.

Table of contents graphic:

