



Thompson, Adam and Maskery, Ian and Leach, Richard K. (2016) X-ray computed tomography for additive manufacturing: a review. *Measurement Science and Technology*, 27 (7). 072001/1-072001/17. ISSN 1361-6501

Access from the University of Nottingham repository:

http://eprints.nottingham.ac.uk/33856/3/X-ray%20computed%20tomography%20for%20additive%20manufacture%20a%20review_unformatted.pdf

Copyright and reuse:

The Nottingham ePrints service makes this work by researchers of the University of Nottingham available open access under the following conditions.

This article is made available under the University of Nottingham End User licence and may be reused according to the conditions of the licence. For more details see: http://eprints.nottingham.ac.uk/end_user_agreement.pdf

A note on versions:

The version presented here may differ from the published version or from the version of record. If you wish to cite this item you are advised to consult the publisher's version. Please see the repository url above for details on accessing the published version and note that access may require a subscription.

For more information, please contact eprints@nottingham.ac.uk

X-ray computed tomography for additive manufacturing: a review

A Thompson¹, I Maskery and R K Leach

Manufacturing Metrology Team, Additive Manufacturing and 3D Printing Research Group, University of Nottingham, Nottingham, NG7 2RD, UK

E-mail: ezxat1@nottingham.ac.uk

Abstract. In this review, the use of x-ray computed tomography (XCT) is examined, identifying the requirement for volumetric dimensional measurements in industrial verification of additively manufactured (AM) parts. The XCT technology and AM processes are summarised, and their historical use is documented. The use of XCT and AM as tools for medical reverse engineering is discussed, and the transition of XCT from a tool used solely for imaging to a vital metrological instrument is documented. The current states of the combined technologies are then examined in detail, separated into porosity measurements and general dimensional measurements. In the conclusions of this review, the limitation of resolution on improvement of porosity measurements and the lack of research regarding the measurement of surface texture are identified as the primary barriers to ongoing adoption of XCT in AM. The limitations of both AM and XCT regarding slow speeds and high costs, when compared to other manufacturing and measurement techniques, are also noted as general barriers to continued adoption of XCT and AM.

Keywords: x-ray computed tomography, additive manufacture, metrology

1. Introduction

A summary of recent research on the use of x-ray computed tomography (XCT) as a volumetric measurement tool for additive manufacturing (AM) is presented in this review. This introductory section details the principles behind XCT for AM, and examines the historical use of XCT for this purpose.

During the design of manufactured components, it is important to define tolerances for each feature in order to ensure that the part conforms to specifications (for example, using the geometrical product specification defined by the International Organization for Standardization [1]). In manufacturing, a tolerance is defined as the “difference between the upper and lower tolerance limits”, where tolerance limits are “specified values of the characteristic giving upper and/or lower bounds of the permissible value” [2]. In order to verify that a feature on a manufactured component is within the defined tolerance, some form of measurement is needed. As will be discussed in section 1.2, AM provides freedom of design that is generally infeasible by other manufacturing methods, particularly regarding the creation of complex internal features that are inaccessible to well-established measurement tools. AM parts require verification as do those produced by any other manufacturing process, and as such XCT is currently the best method of measurement for these internal features due to the volumetric nature of the XCT process. XCT is, however, not yet as firmly established as a measurement tool compared to other methods of dimensional metrology, and so research regarding various aspects of the technology is still required to enable XCT to become an industrially relevant technology [3]. As AM and XCT have recently become more viable as methods of production and measurement, respectively,

¹ Author to whom any correspondence should be addressed.

instances over time of their combined use, as well as the future work required to further establish both technologies, will be discussed in this review.

1.1 The principles of x-ray computed tomography

X-ray computed tomography is a method of forming three-dimensional (3D) representations of an object by taking many x-ray images around an axis of rotation and using algorithms to reconstruct a 3D model [4, 5]. Three main methods of XCT have been developed over time and each development iteration has increased the speed of data collection. The first XCT method uses a pencil beam of x-rays translated linearly opposite an x-ray detector to capture density data along each beam. The scanner is then rotated by a small increment and the process repeated until data from a full 360° arc are acquired. The second method uses a two-dimensional (2D) fan of x-rays, spanning the full width of the object, with a one-dimensional (1D) detector array that corresponds to the outer edges of the fan beam. The third method utilises a full 3D cone of x-rays with a 2D detector. For the pencil beam scanner, the x-ray source and detector translate linearly to cover a slice in the xy plane. The source and detector then move by a small increment in the z plane, relative to the object being measured, and the process is repeated. For the fan beam scanner, a full slice of the object is irradiated at any instant, whilst the cone beam scanner irradiates the whole object throughout the scan. Each scan method moves through 360° to acquire data for the whole object. Early x-ray detection utilised scintillation detectors with photomultiplier tubes, while more recent technological advances allow the use of element-based charge-coupled devices (CCDs) for detection [6]. Figure 1 illustrates each of the methods of XCT. It should also be noted that when performing XCT measurements the quality of the image, i.e. the resolution and contrast of the image, is the primary concern. In relation to the image quality, there are always trade-offs that should be considered when performing XCT measurements. Because of the nature of XCT and the reliance on x-ray penetration of the scanned object (or field of view), an increase in the size of the object being measured has the associated effect of decreasing the resolution of the image by reducing the maximum possible magnification of the scan. Reducing the magnification therefore increases the size of the scan voxels and so decreases the image quality. High density materials are also more difficult to measure than low density materials due to the lower x-ray penetration, and so object size is also limited by the material density as in order to achieve a reliable contrast, longer exposure times must be used. It is therefore often the case that in XCT scanning, in order to improve the image quality, a small piece of the scanned object, or a reference coupon with similar properties to the object, is measured in place of the whole object. It is possible to improve scan quality in this manner, but this method carries the disadvantage that the actual object of interest is not the object that is scanned, and so results can be skewed.

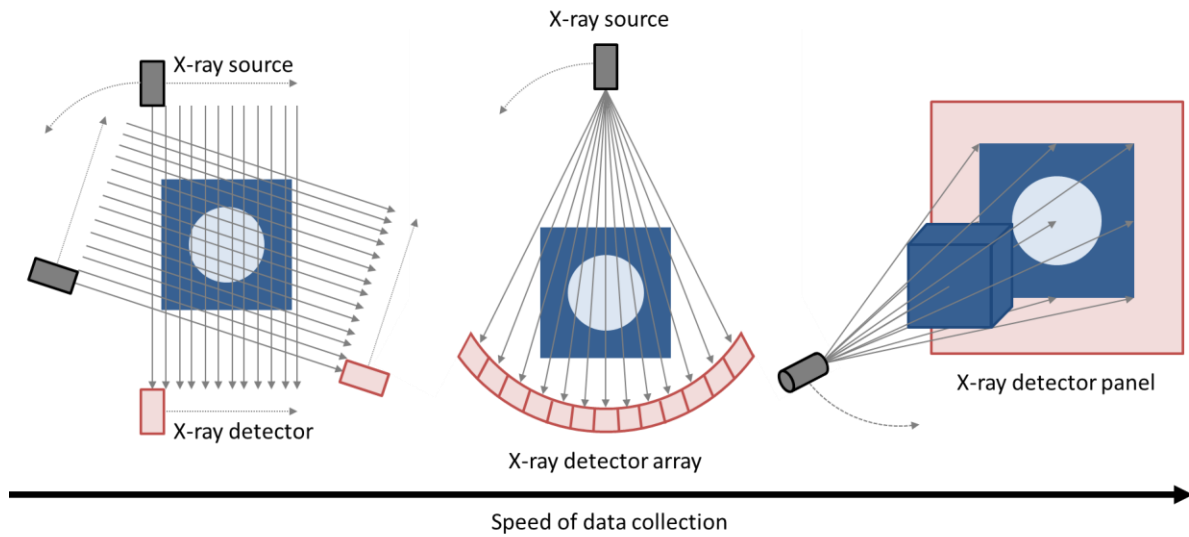


Figure 1. Schematics of pencil, fan and cone beam XCT methods, respectively. In this diagram, the fan beam image depicts a curved detector while the cone beam image depicts a flat panel detector, it should be noted that curved and flat panel detector arrays can be used in each instance [6].

Once data has been collected using one of the methods outlined above, the data are processed by a computer system that performs a reconstruction using the acquired x-ray intensity readings for each of the detector elements. These intensity readings result from the summation of individual linear attenuation coefficients along a vector through the measurand from the x-ray source to the detector element. Using these values, the computer builds up individual slice images, which can then be stacked into a 3D reconstruction [6]. The resulting 3D reconstruction can then be used for a variety of applications, from simple visualisation purposes to direct measurement of geometries or conversion into an .STL (STereoLithography) file [7] for AM production.

1.2 Additive manufacturing processes

AM, also known popularly as “3D printing” [8], is the process of joining materials to make objects from computer-aided design (CAD) data, usually layer upon layer. This is in comparison to subtractive manufacturing processes such as machining from billet, or formative processes such as forging or die-casting [9]. Over recent years, AM has been developed into an industrially viable technology in itself. AM was first conceived in 1986 by Chuck Hull [10], with his invention of the stereolithography process, and has since developed into a wide and highly versatile range of manufacturing processes. Seven process families exist within the wider bracket of AM as defined by the American Society for Testing and Material (ASTM) [8] and are outlined here for clarity:

- Vat photopolymerization: selective layer by layer photopolymerization of a vat of liquid photopolymer resin, e.g. stereolithography (SLA), two-photon lithography.
- Powder bed fusion: selective layer by layer fusion of a bed of powdered material, e.g. selective laser melting (SLM, metals), electron beam melting (EBM, metals), direct metal laser sintering (DMLS, metals), selective laser sintering (SLS, polymers and ceramics).
- Material extrusion: selective layer by layer extrusion of material through a nozzle e.g. fused deposition modelling (FDM, polymers).
- Material jetting: selective layer by layer deposition of liquid material droplets onto a substrate where it then solidifies, e.g. inkjetting, metaljetting (various materials).
- Binder jetting: selective layer by layer deposition of liquid binder droplets into a bed of powdered material, e.g. 3D printing (polymers and ceramics).
- Sheet lamination: Selective cutting of material sheets that are laminated together to form 3D geometries e.g. laminated object manufacture (LOM, various materials).

- Directed energy deposition: Selective deposition of material fed into an energy source to form a melt pool, usually mounted on a multi axis arm, e.g. direct metal deposition (DMD), laser engineered net shaping (LENS, also metals).

AM techniques offer a range of benefits when compared to conventional manufacturing processes. The primary benefit offered by AM is the huge freedom of design offered by the various additive processes. This benefit means that geometries that were previously impossible to produce using existing machining techniques are now capable of being built using additive techniques. This is because AM does not have the requirement for tool access that hinders most machining techniques [8]. The tool access requirement has for example previously been a problem when creating tooling for injection moulding applications, as the construction of conformal cooling channels was previously prevented by the straight line limitations of drilling operations [11]. Given the nature of additive processes, AM also allows for small production runs when compared to technologies such as injection moulding, as there is no tooling cost associated with producing new parts [8].

As with any manufacturing technology, however, there are limitations to AM processes, and much work is currently being undertaken to reduce these. For example, when compared to injection moulding or computer numeric control (CNC) machining, AM processes are universally slower by orders of magnitude. An injection moulded part that may be completed within seconds may take several hours to fabricate using comparable additive techniques, while high-speed CNC processes are capable of material subtraction rates far in excess of the material addition rates of the fastest AM techniques [8]. There are also limitations in regards to available materials, as only a relatively small library of suitable materials for the fabrication of AM parts exists. In addition, dimensional accuracy is a significant problem in AM technologies, as typical accuracies for industrial processes are in the range of a few tens of micrometres [8], far below the nanometre resolutions now possible using ultra-precision machining [12]. It should be noted that some micro-additive processes are capable of accuracy in the range of a few micrometres, but these processes are only currently capable of producing relatively small parts and, therefore, are restricted in their application [13].

In terms of industrial applications, the processes used in today's manufacturing sector include vat photopolymerization and material extrusion processes (primarily used for prototyping and modelling), as well as various powder bed fusion processes (now used to produce polymer and metal parts for end use). In recent times, inkjetting for the fabrication of 3D parts has also begun to gain traction as a credible industrial method, due to its scalability and multi-material part production [14]. This review focusses primarily on the industrial applications of the technology and so naturally focusses on these techniques. Figure 2 explains diagrammatically how parts are produced using these methods. It should also be noted that although material extrusion (e.g. FDM) is now commonly used in prototype and part production, this review will not focus on this additive method. This is because while material extrusion as a technology is of great interest in a number of industrial applications as primarily a rapid prototyping technology, other AM technologies are now capable of producing higher resolution parts with improved densities and mechanical properties [8]. As such, material extrusion does not feature heavily in the newest research surrounding the use of XCT in AM and so has been less heavily examined than other AM processes in this review. Furthermore, as other techniques offer higher precision as well as the potential for much more complex printed parts; therefore having a stronger link to XCT dimensional metrology, material extrusion is of less interest in this review.

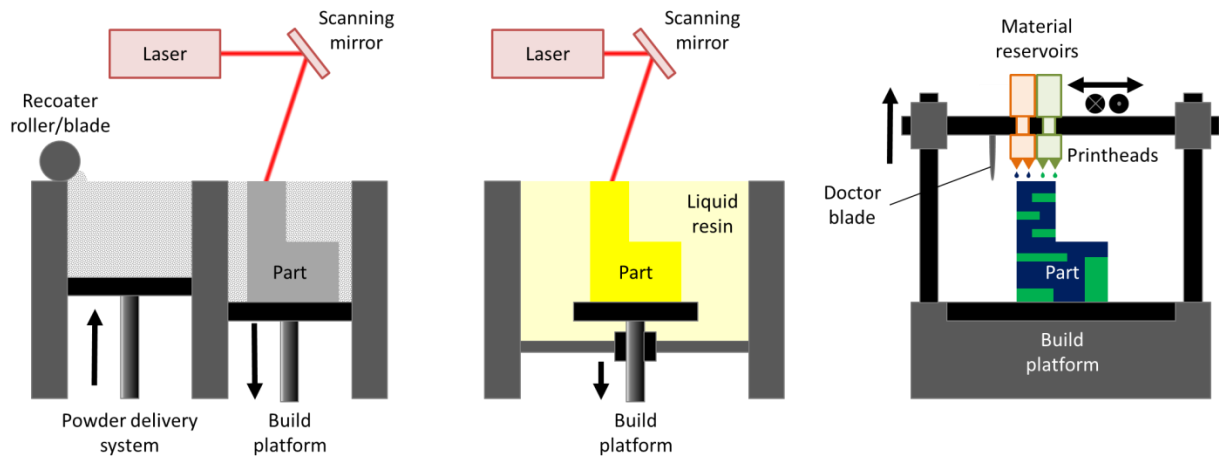


Figure 2. Schematic diagrams depicting the processes of SLM, SLA and inkjetting respectively [8].

2. Historical overview of XCT and AM

XCT and AM were first jointly used in a medical context, to reverse engineer a model of a skull in 1990 [15]. Since this first use, there have been many developments in medicine using XCT and AM to produce increasingly complex models as well as implants for animal and human patients. This paper focusses on the industrial use of XCT and AM and so details of medical use will not be examined. A review of XCT and AM in medical modelling can be found in reference [16].

2.1 History pre-1995

The very early use of AM and XCT was in a medical modelling context, and as such, although an increasing array of studies involving the reverse engineering of organs were published, very little AM and XCT was performed in a non-medical engineering context. Ashley's editorial in the popular *Mechanical Engineering* magazine [17] allows insight into the use of XCT in AM at the time; outlining processes and discussing the then recent papers. The editorial mentioned the potential use of AM parts as implants and prostheses, as well as in surgical planning, indicating the direction that technologies were moving at the time.

2.2 History 1995 to 2005

Throughout the early 1990s, the use of AM and XCT increased rapidly, resulting in a plethora of published research featuring an increasing array of AM and XCT technologies. Whilst remaining primarily a method of reverse engineering for medical modelling, the technologies began to expand during these years as XCT and AM resolutions improved. As such, studies involving the use of XCT as an inspection tool for manufactured parts began to be published. The first example of a quantitative measurement of an XCT/AM part was performed in 1997, in a paper by Berry et al. [18] that compared measurements performed on SLS models to measurements performed on the source XCT data. The authors concluded that models were in good dimensional agreement (± 0.5 mm) with the XCT source data. It should be noted, however, that initial builds showed a part much larger than expected due to an error in communication that the authors did not explain, which was accounted for by scaling of the measured values; a method which cannot be seen as an accurate comparison of measurements. It was clear from this study that the SLS technology represented a viable method of production of accurate orthopaedic models. During the latter half of the 1990s, the first industrially-focussed papers were published, improving AM technology and examining case studies of the first industrial end-use parts. For example, in 1995 Jamieson and Hacker [19] investigated sliced contours as an input to AM machines in comparison to STL files, noting that production of these files is possible directly from XCT data. The authors concluded that direct sliced CAD models are often preferable for additive use in manufacture over the STL standard. The first industrial case study [20]

used SLS to form sand casts for production of an engine cylinder head. XCT was then used on the cast part to examine porosities produced using the casting process, concluding that this method of porosity examination was useful for rudimentary detection of pores (see figure 3).

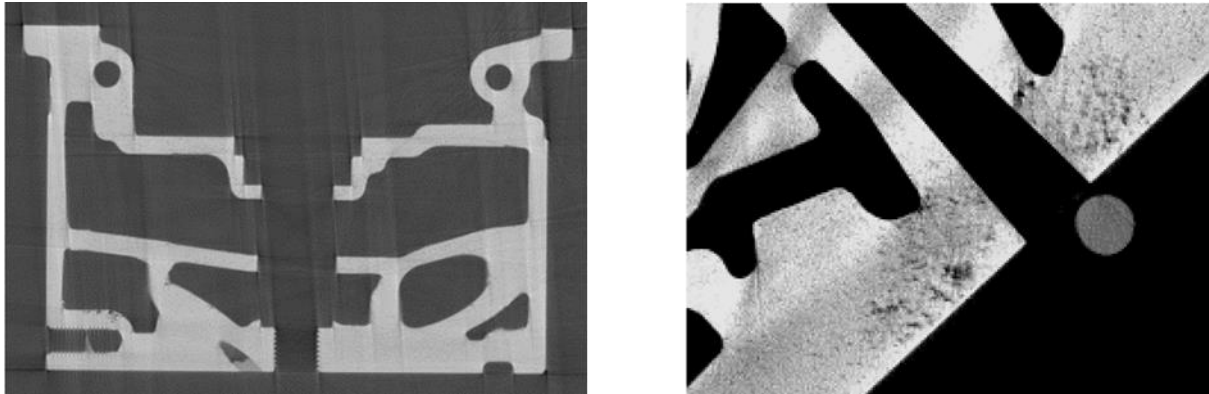


Figure 3. Examples of an XCT slice of an aluminium sand cast engine cylinder head and of porosities found when producing parts by this method. The authors note the sharp definition of internal cavities as a result of the relatively high SLS accuracy. Images reproduced from reference [20].

2.3 History 2005 to 2010

The 2005 to 2010 period showed an increase in the use of XCT for measurement of AM parts, specifically using XCT as a pore measurement tool. During this time, authors began to measure overall porosity through calculation of the ratio of the number of voxels representing pores to the number voxels representing solid material in an XCT scan [21], as well as performing dimensional measurements of individual pores using the method presented by Hildebrand and Rüsegger in 1997 [22]. Hildebrand and Rüsegger detailed a method of depicting complex spatial structures (i.e. pores) through distance transformations, using XCT data. Regarding overall porosity measurement, examples of this use can be found elsewhere [23-31] for a variety of AM purposes, such as: assessment of osseointegration potential, AM process comparisons, CAD/as-built comparisons, and general characterisation of tissue scaffolds and similar porous structures. The authors of references [23-31] also commonly performed more established characterisation methods such as scanning electron microscope (SEM) imaging and mechanical testing in conjunction with XCT porosity measurements, adding the XCT as a complementary technique. The 2008 paper by Heisl [24] also represents an example of the use of the aforementioned Hildebrand and Rüsegger method of pore diameter measurement [22]. In the 2010 paper by Kerckhofs et al. [31], the authors provide further novel use of XCT data alongside mechanical performance data to map strain at different loads in porous Ti-6Al-4V structures, in order to correlate structural and mechanical characteristics.

2.4 History 2010 to 2014

Metrological research progressed during this time, increasingly focussing on using XCT for porosity quantification and measurement of individual pores, as well as direct dimensional measurement of part geometry. As a now well-established technique for measurement of porosity (or conversely density) through comparison of empty to filled voxels [21], XCT was used between 2010 and 2014 by authors covering a wide range of research areas [32-46]. Furthermore, some of these authors [32, 34, 39] compared XCT porosity data to values gained using other methods, most notably the Archimedes method (outlined in reference [34]). These studies, which examined metals, generally found that for metals the Archimedes method is capable of producing substantially more accurate and precise porosity values than through the use of XCT alone, and that porosity values gained via the Archimedes method were systematically larger than via XCT. Spierings et al. [34] specifically addressed this discrepancy and attributed it to the loss of data from small pores due to the relatively poor resolution

of XCT data, noting the effect to be particularly prevalent in highly dense parts. The authors also compared their findings to SEM micrographs, which gave porosity values similar to those gained using the Archimedes method for highly dense parts, but displayed substantially more variation. As a result of these findings, a number of subsequent studies used the Archimedes method as the sole porosity measurement [47, 48]. The Archimedes method currently remains the most appropriate method for porosity evaluation of metals in future studies, as XCT data is not yet comparably accurate. The Archimedes method of porosity measurement is possible because although the method technically measures density, it is usually possible for metals to translate the obtained density into a porosity value, as the bulk density of the metal is usually well known. It should be noted however, that in the case of polymer parts, the part density commonly varies dependent on the polymer microstructure (i.e. amorphous versus crystalline phases) and so the bulk density of AM polymers is often not well known as the microstructure depends upon the processing of the part [49, 50].

A number of authors during this period also examined the porosity of SLS polymer parts using XCT [33, 37, 44, 45]. The results of these studies differed in their findings compared to those examining metal parts, in that the Archimedes measurements used by some of these authors were not found to be as similarly accurate as found in the papers discussed above. For example, Rösenberg et al. [33] compared Archimedes, XCT and gas pycnometer (i.e. measuring displaced gas) porosity measurements, reporting lower porosities with larger uncertainties from the Archimedes measurements than from the pycnometer measurements. Compared to the Archimedes measurements, XCT measurements reported lower porosities again, but this was attributed to the fact that the XCT samples were taken from the centre of the sample bulk, while more pores were concentrated near the edges of the part. Dupin et al. [37] similarly measured the density of SLS processed polyamide 12 using the same three methods, again reporting higher closed porosities using the Archimedes method when compared to XCT. In this study however, the authors attributed this difference to an overestimation of the closed porosity by Archimedes measurements because of the degree of crystallinity of the processed polymer having a higher density than the density of the powder measured by pycnometry.

The aforementioned studies ([32, 34, 39]) note that the Archimedes method is incapable of providing any information about the internal part geometry beyond an overall porosity, and so XCT has continued to be used for dimensional pore measurement and internal defect detection [34, 35, 39, 40, 42, 46, 47]. In addition to the measurement of pore morphology, XCT also allows visualisation of pore distribution within parts. In the paper by Léonard et al. [51] for example, the authors studied the formation of elongated pores in EBM parts, correlating to intentionally misaligned overlap regions between contour and hatched sections within parts. Similarly, Attar et al. [48] examined crack formation due to pores and unsintered powder in SLM titanium parts, using XCT to examine pore distribution.

This period saw a rise in the use of XCT as an inspection tool for part and process verification [52, 53], and as a dimensional measurement tool. As examples of dimensional measurements, the authors of a number of the aforementioned studies used XCT for the measurement of lattice structure feature sizes in addition to porosity. The authors of these papers also increasingly presented measurement uncertainties and the related influence factors alongside measurement data; not a practice often seen in previous medically focussed references [35, 38]. A further example of XCT use for dimensional measurement can be found in the paper by Fukuda et al. [54], where the authors investigated the ideal scaffold pore size for generating bone ingrowth by simulating pores with varying size channels and subsequently measuring the channel dimensions by XCT. Similarly, Van der Stok et al. [55] used XCT following the implantation of bone scaffolds into mice, to periodically measure the volume of integrated bone, as well as to initially verify implant placement.

During this period, a series of publications by Pyka et al. [38, 43, 56-58] pioneered the use of XCT data as a method of analysing surface texture, through extraction of surface texture parameters from XCT data. In a 2010 paper by Pyka et al. [56], the authors highlighted the difficulties in the measurement of surfaces in porous 3D structures by traditional methods, and so defined a protocol for XCT roughness measurement by generating profiles from 2D XCT slices. The authors measured SLM Ti-6Al-4V struts using XCT and validated the method by comparison with interferometric measurements. Texture parameters generated using both methods were shown to be similar and differences in roughness between the tops and bottoms of struts were identified by the authors. It should be noted, however, that Pyka et al. presented preliminary results; roughness parameters were quoted generally without filtration, uncertainty or confidence intervals, which is not in line with good practice for the generation of surface texture parameters [59]. Kerckhofs et al. [57] rigorously compared the surface parameters Pa , Pq and Pt of porous Ti-6Al-4V samples, measured using optical, contact and XCT methods. The data showed XCT measurements to be accurate and robust for micro-scale roughness, whilst sub-micrometre measurement was stated to be currently impossible. Pa values for rough surfaces ($5\ \mu\text{m}$ to $30\ \mu\text{m}$) were statistically similar for each technique, although optical measurements gave higher values on rougher samples due to data dropout from the presence of steep slopes (i.e. lower accuracy compared to the XCT technique). Pa values for low roughness surfaces ($<1\ \mu\text{m}$) were overestimated using the XCT technique and the data were highly affected by noise. Measurements of porous structures showed no differences between internal and external struts when top and bottom values were averaged, implying successful roughness measurement throughout the volume. The authors clearly discussed caveats of the technique regarding poor resolution, although did not perform any filtering of the extracted profiles (to gain texture parameters, as is common practice) and did not explain why this was not performed. Figure 4 illustrates the method of profile extraction from XCT data (from reference [57]). This method of parameter extraction was then applied in further papers by Pyka et al. [38, 58] and Van Bael et al. [43]. In the papers by Pyka et al., the authors used the technique to compare scaffold strut surface primary profiles after various surface finishing processes, while Van Bael et al. used the technique to study strut surfaces for in vitro applications. It should be stressed, however, that whilst the development of this technique holds promise for future surface measurements, the data gained are of poor resolution in comparison to established surface measurement methods, and the parameters obtained for surface texture measurement are now in the process of being supplanted by other methods of surface metrology [60]. Development of the Pyka et al. method, therefore, represents a stimulating research challenge for future work.

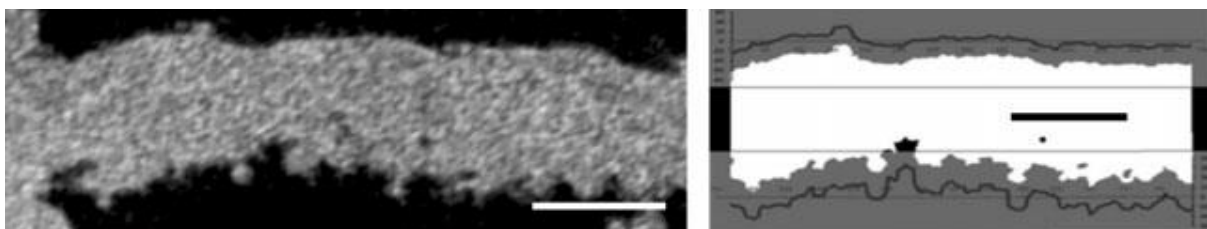


Figure 4. An XCT image used in the measurement of surface texture parameters, with a binarised version of the slice and the extracted profiles. Scale = $200\ \mu\text{m}$. Image reproduced from [57].

As XCT technology by 2010 represented a viable metrological tool, this period also saw the publication of a review article summarising the industrial use of the technology up until this point. In this review, Kruth et al. [4] studied the use of XCT for dimensional quality control, including traceable dimensional measurements and tolerance verification. The review outlined the principles of XCT metrology, highlighting various data acquisition strategies as well as problems associated with scatter, beam hardening and edge detection (see reference [6]). The authors studied test cases and explained the use of XCT in internal feature metrology, as well as in combining dimensional quality control with material quality control. Kruth et al. finally highlighted the remaining work on enlarging the applicability of XCT metrology in the areas discussed. This review also noted the lack of reference

objects for the purpose of XCT verification and calibration, and presented a number of reference objects proposed for this purpose. In the subsequent presentation by Carmignato et al. [61] and in the related paper by Carmignato [62], the authors elaborated upon the Kruth et al. review, summarising methods of accuracy evaluation of XCT dimensional measurements. Carmignato [62] also discussed performance verification and traceability establishment methods, noting the importance of XCT for measurement of AM parts. The authors further discussed the results from the first international XCT comparison of four proposed reference objects (see figure 5). In his paper, Carmignato concluded that there is a need for standards regarding performance verification and traceability, in order for XCT to be accepted as a metrological tool.

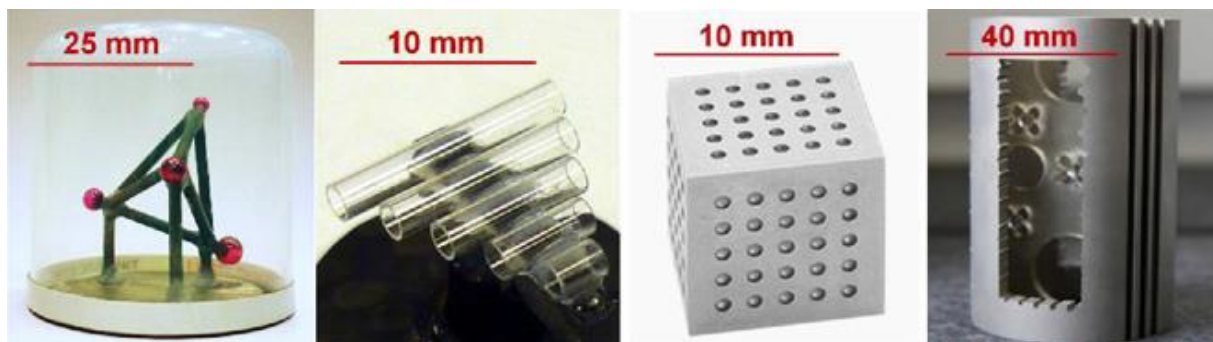


Figure 5. Reference objects used in the international XCT comparison, from left to right: CT tetrahedron, pan flute gauge, calotte cube and QFM cylinder. Image reproduced from [62].

The 2011 paper by Kiekens et al. [63] similarly presented initial work into using XCT for metrological purposes, investigating the influence of workpiece orientation, magnification, edge detection and calibration on measurement accuracy and repeatability using a test artefact (see figure 6). The artefact illustrated the use of co-ordinate measuring machines (CMMs) for the purpose of XCT calibration by comparing various calibration strategies. The authors specifically noted the requirement for the measurement of complex internal features in AM and outlined a measurement strategy. The authors concluded that the artefact was uniquely useful in the measurement of scale and offset errors, allowing scaling and thresholding calibration with a single artefact, and explained the ability of the artefact to allow internal and external measurements. Further to these general XCT artefacts, in 2012 Moylan et al. [64] of the National Institute of Standards and Technology (NIST) presented the initial development of an AM general test artefact, noting the lack of standardised AM parts and reviewing existing test parts. The authors used existing test parts to form a set of rules to design an artefact for standardisation by the ASTM. The authors then specified design intent and presented the part, detailing each feature and the measurement strategy using CMM, surface texture measurement, ultrasonic testing and XCT. Moylan et al. finally presented preliminary results (successful manufacture by several AM techniques) and outlined future work (see figure 6 and section 5.4). It should be noted that this artefact was not designed for XCT dimensional metrology, Moylan et al.'s suggestion in this case was to examine a small section of the sample using XCT to characterise internal defects; the artefact as a whole is not particularly suitable for XCT due to the large differences in x-ray penetration length with orientation.

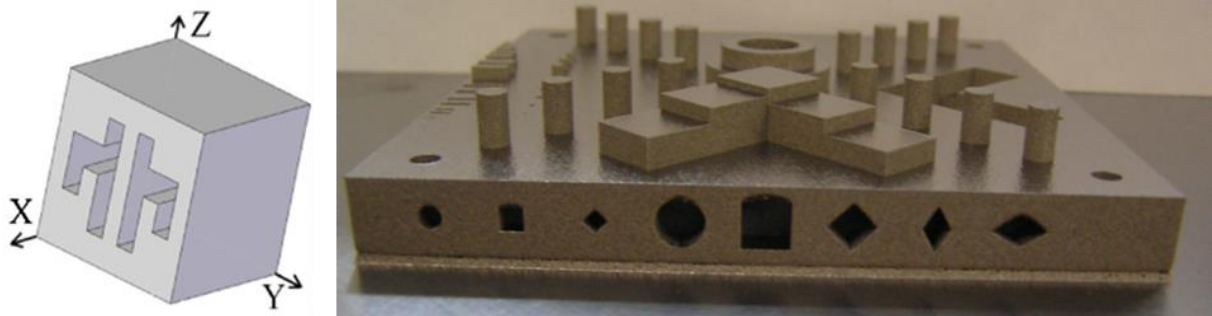


Figure 6. Left to right: the ‘cactus’ XCT artefact, reproduced from [63] and the NIST AM artefact of Moylan et al., reproduced from [64].

3. XCT in AM reverse engineering today

While medicine represents the most common application of XCT and AM reverse engineering [16], the technology has spread into other research areas, often for the examination and reproduction of cultural artefacts or archaeological remains. As examples of this, Laycock et al. [65] reproduced 19th century chess pieces through digital modification of incomplete XCT data from broken and incomplete artefacts, while Howe et al. [66] used XCT data to reverse engineer historical wind instruments with a view to producing working copies of antique models (see figure 7). Laycock et al. concluded that reconstruction using XCT with AM was possible; particularly noting that XCT data provided previously unknown information about construction methods of the original chess pieces. Howe et al. drew similar conclusions, noting that the method used showed promise for the production of historical instruments. The authors did, however, cite drawbacks relating to machine cost, as well as pore formation and surface finish as barriers to adoption of the technology due to the resulting effects on musical tone.



Figure 7. Left: XCT data of a saxophone mouthpiece, right: AM reproduced saxophone mouthpieces with original wooden mouthpiece (second from left). All the AM mouthpieces were produced by scaling of the original scan data and the rightmost mouthpiece was stated to be sufficiently dense as to operate successfully. Images reproduced from [66].

As an example of archaeological use, Ishida and Kishimoto [67] used XCT to perform dimensional measurements of height and width of a radiolarian fossil on the order of 100 μm , as well as to inspect the form and the arrangement of pores in the fossil skeleton. These data agreed with conventional measurements performed by other authors and also revealed a previously unexamined structure in the skeleton. The authors binder-jetted a model of this skeleton to provide a detailed observational

analogue and concluded that XCT and binder-jetting are effective tools for radiolarian studies. Similarly, Henson [68] reproduced biological remains from XCT and 3D laser scanner data using binder-jetting, where comparison of the reproductions showed that XCT gave higher accuracy models compared to 3D scanner data. Henson concluded in this instance that the models produced were not sufficiently accurate for extensive skeletal research, but noted that the models allowed for population and basic morphological studies, and that they were applicable to outreach and teaching as well as for use in exhibitions. Appleby et al. [69] similarly used SLS to replicate the skeleton of Richard III from XCT data of remains famously found in a Leicester car park. The resulting model has since been exhibited, as well as used to provide new information about the king's life and his famous spinal defect.

4. XCT in AM pore measurements today

The use of XCT for the non-destructive measurement of density and porosity, as well as the study of pore morphology and distribution, is now a well-established practice which applies particularly well to the measurement of AM parts. As one of the primary techniques currently available to evaluate pore morphology and distribution non-destructively (the other being ultrasonic NDE), XCT is increasingly being used in AM for a variety of applications and recent publications reflect this use [70-89]. A number of these publications represent novel uses of XCT in porosity measurement and will be described here in more detail. Before discussing these uses, however, it is at this point appropriate to highlight studies involving measurements of small features which are examined in essentially the same manner as pores. For example, in the paper by Slotwinski et al. [90] and the review by Slotwinski and Garboczi [91], the authors discuss using XCT to analyse the morphology of particles used in powder bed fusion. Similarly, Chlebus et al. [85] used XCT not only to measure porosity but also to quantify the amount of rhenium dissolved in molten titanium, through measurement of remnant rhenium particles in final parts. In another example of small feature measurement, Tammas-Williams et al. [83] used XCT to examine pores within a powder feedstock, as well as pores present in final parts.

4.1 Recent novel XCT porosity measurements

In the paper by Cox et al. [70], the authors produced binder-jetted hydroxyapatite (HA) and poly(vinyl)alcohol tissue scaffolds, using XCT to measure the percentage by weight of HA in the scaffolds, whilst also quantifying the undesigned porosity of the structure in green and post-sintered parts. To note for the purposes of this discussion, designed porosity is generally defined as the macroscopic voids between solid features in lattice structures, while undesigned porosity is defined as the porosity naturally arising as a by-product of AM processes. Designed porosity is present only in lattice structures while undesigned porosity is found commonly in all AM parts. Another example was presented in the recent paper by Carlton et al. [80], in which the authors performed tensile tests of SLM as-built and annealed 316L stainless steel in-situ during white light synchrotron XCT. This experiment showed that the role of the porosity distribution is larger than the role of bulk density in affecting fracture mechanisms. Using XCT alongside SEM fractography, Carlton et al. particularly showed that in samples with large inhomogeneous void distributions, failure was dominated by individual flaws as opposed to bulk density, with cracks consistently initiating at pre-existing voids. Carlton et al. particularly noted the capability of SLM in creating parts with a wide range of porosities, porosity distributions and morphologies, as well as that final mechanical properties are dependent on all of these factors. Figure 8 shows results of the in-situ testing.

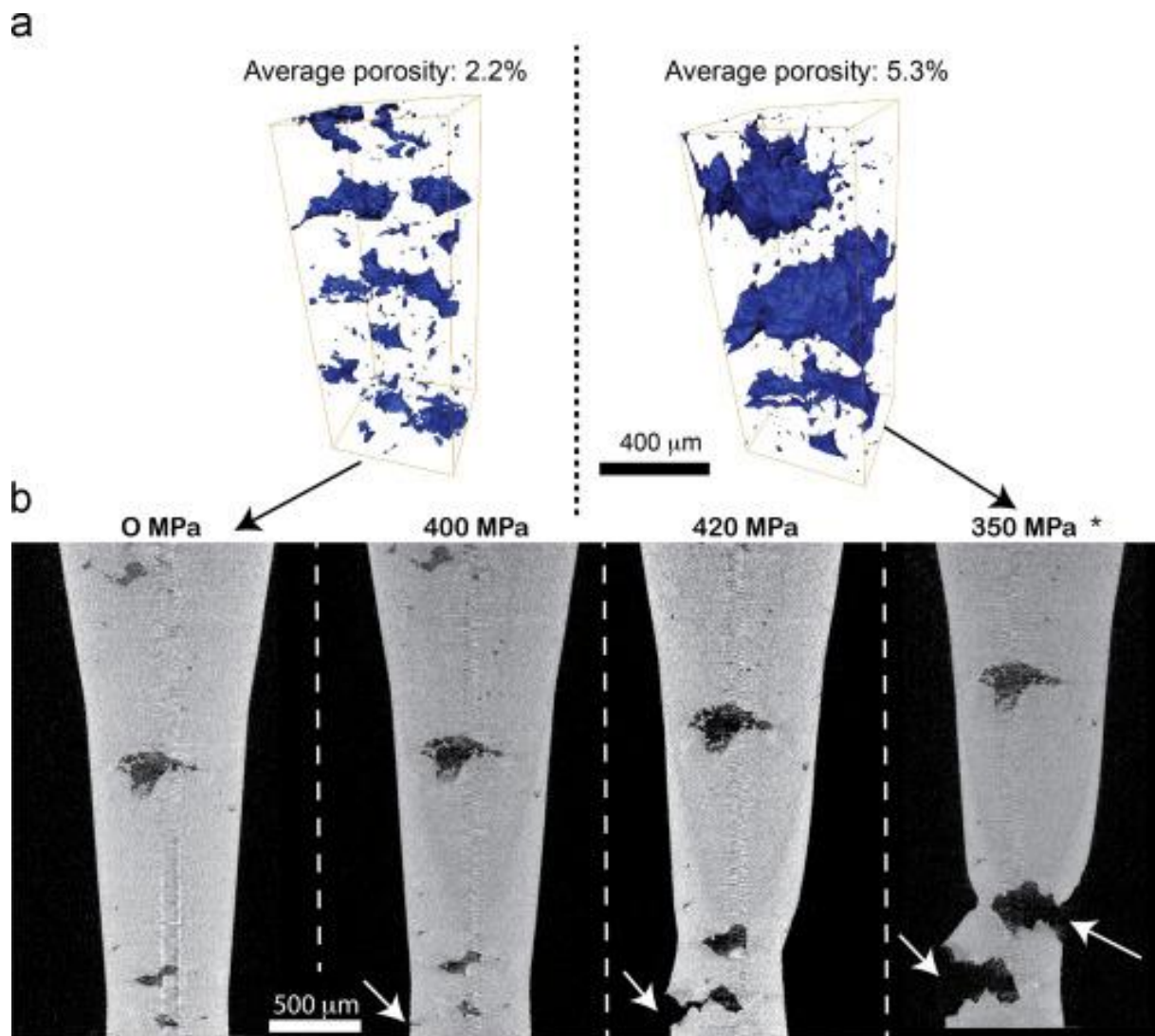


Figure 8. (a) Volume renderings of voids in a high porosity stainless steel sample prior to mechanical testing (left) and immediately before catastrophic failure (right). (b) XCT images at different load and displacements during in-situ tensile loading. Images reproduced from [80].

Similarly to Carlton et al.'s [80] examination of porosity in relation to mechanical performance, Siddique et al. [79] and Leuders et al. [81] respectively used XCT to relate part porosity to stress concentration in SLM processed Al-12Si and to fatigue performance in SLM processed Ti-6Al-4V, examining as-built and hot isostatically pressed (HIP) samples. Siddique et al. concluded that XCT was effective in detection of fatigue-critical pores, while Leuders et al. showed poor accuracy in failure prediction which they attributed to the high defect density of SLM parts. Leuders et al. did, however, identify methods of optimising prediction accuracy through SEM examination of crack surfaces and initiation sites. Leuders et al. also noted a strong correlation between defect location and fatigue damage, broadly agreeing with Carlton et al.'s findings. Tammis-Williams et al. [88] evaluated the use of XCT in the measurement of the effect of porosity distribution on fatigue performance in Ti-6Al-4V EBM samples, noting that while XCT cannot capture small pore data, it is capable of capturing fatigue-critical larger pores which other methods (such as SEM metallographic sectioning) may miss due to sampling issues. The authors concluded that coarser scans (of resolution $\sim 25 \mu\text{m}/\text{pixel}$) are sufficient in capturing all fatigue-critical flaws and so XCT represents a viable detection method for this purpose, agreeing with the conclusions of Siddique et al. [79]. Attar et al.

[83] used XCT in the study of compressive failure, this time in scaffolds of varying porosity produced from titanium and Ti-TiB by SLM. XCT was used to verify designed porosities and identify additional undesigned porosities, as well as to show that cracks resulting from low strut ductility in porous areas cause early-stage compressive failure. In their study of SLM processed AlSi10Mg, Maskery et al. [84] examined the effect of post-process heat treatments on pore size, position and morphology, noting no changes after annealing and precipitation hardening of samples. The authors specifically noted the usefulness of XCT in quantitative defect analysis when compared to conventional SEM cross-sectioning, as the number of micrographs required to provide a pore sample size of equivalent statistical quality would be prohibitively large. The authors in this case also identified a requirement for development of robust image analysis procedures, in particular thresholding or segmentation, in order to ensure reliable pore morphology measurements in the future.

4.2 Hybrid porosity measurements

The authors of the studies discussed in section 3 commonly used XCT as part of a larger sphere of characterisation methods to relate porosity to other part features. In continuation of this theme, several instances where XCT has been used in pore measurement with other techniques are of note; either to verify experimental measurement procedures through twin data acquisition, or as a hybrid measurement tool. In the paper by Tammas-Williams et al. [88], the authors compared XCT data to SEM metallographic cross-section data to further examine pore morphologies and showed that XCT data generally agreed with 2D cross-sectional measurements down to a lower pore size limit of $\sim 5 \mu\text{m}$. Maskery et al. [84] stated their agreement with the pore size data presented by Tammas-Williams et al., noting very similar pore sizes in their study. Castilho et al. [86] similarly studied the dimensional accuracy, porosity and mechanical properties of binder-jetted parts as a function of binder saturation. Using the Archimedes method, SEM, XCT and high resolution photo-scanning, the authors measured physical properties, while compression tests were performed to examine mechanical properties following post-processing of parts. XCT was used with these other techniques to visualise pore distribution in part interiors, while the Archimedes method was used to evaluate overall porosity. The photo-scanner was used in this case to evaluate dimensional accuracy by measuring the scanned images.

XCT was used by Grünberger and Domröse [72] in development of a method for in-situ monitoring of DMLS through the measurement of light emissions during the manufacturing process. This monitoring aimed to provide an in-situ pass/fail status for parts, defined by tolerancing of the resultant part porosity as measured post-process by XCT. Slotwinski et al. [73] developed a method of in-situ porosity monitoring by ultrasonic sensing, correlating ultrasonic porosity data to porosity data gained using three other methods; mass/volume, the Archimedes method and XCT. The authors in this instance noted that porosity values varied significantly between measurement procedures and so further destructive testing would be required to ascertain the "true" porosity value. They concluded that there was a linear correlation between ultrasonic measurements and porosity despite a lack of morphological or distributional homogeneity. This paper is also noteworthy for the detail in which XCT porosity measurements are described, as the authors very clearly outlined the method and related uncertainty calculations. A third method of in-situ monitoring was proposed by Mireles et al. [78] using infra-red thermography, again comparing results to post-process XCT scans. They showed that thermography was capable of reliably detecting large pores ($< 600 \mu\text{m}$) in-situ. In terms of hybrid measurements, Nassar et al. [74] and Siddique et al. [79] both presented defect location and pore size data measured using XCT with optical cross-sectional metallography. Nassar et al. compared their data to another method of in-situ defect detection, this time using optical emission spectroscopy, while Siddique et al. critiqued the two methods. Siddique et al. noted that due to the lack of significant difference between the techniques, they favoured the XCT data due to its non-destructive nature, despite a discrepancy between data sets and the substantially more expensive acquisition process compared to cross-sectional optical microscopy. Kasperovitch and Hausmann [82] similarly analysed

porosity using XCT and metallographic cross-sectioning, although they used SEM micrographs as opposed to the optical microscopy used in the aforementioned papers.

The current state of XCT porosity measurement in AM is very clear from the studies discussed here. XCT is now very commonly used for the measurement of pores and similar small features, and XCT has been deemed sufficient in the detection of fatigue-critical flaws. The technique has its limitations compared to other methods of porosity quantification (such as the Archimedes method), mostly pertaining to poor resolution in comparison to the size of the smallest pores. The resolution of XCT scans is related to the size of the sample and maximum achievable magnification afforded by the XCT apparatus. The result of this is that larger samples provide lower accuracy porosity measurements because the shapes and sizes of internal pores are misrepresented. The limitations discussed here will likely only be overcome with the advancement of XCT technology. These conclusions will be discussed in more detail in section 6.1.

5. XCT in dimensional metrology of AM parts today

In addition to porosity measurements, XCT is now commonly used in general dimensional metrology as a substitute for other co-ordinate measurement techniques, in cases where traditional methods of measurement (such as CMM) are impractical. This is most notably the case with AM parts due to the aforementioned complex geometries that are now commonly present. Further to older studies discussed earlier in this review, the past year has seen many publications exploring the use of XCT for direct measurements of part features and a number of these will be discussed in the following section [5, 86, 92-111].

5.1 Validation against CAD models

One of the common foci of current work involving metrological XCT is as a method of accuracy assessment through validation against CAD models, and consideration of related measurement uncertainties and tolerancing is becoming an increasingly significant feature of these studies. Cooper et al. [106], for example, investigated the potential benefits of AM in improvement of fuel efficiency through lightweighting of engine valves, using XCT to reverse engineer FEA simulations in order to redesign the valves. Following production of the re-engineered part, the authors used XCT to validate the part against the CAD model and to detect defects. The part geometry was in good agreement with the CAD model under a tolerance of ± 0.15 mm, with no significant defects detected. The authors noted difficulties in edge detection using XCT during this process and detailed steps were taken to overcome the problem by manually segmenting internal geometries. Cooper et al. concluded that XCT was used successfully as a reverse engineering tool for CAD generation and that production of a functional, lightweight part was possible using AM. Villarraga et al. [104] similarly used XCT to compare parts made by FDM and SLA, as well as to assess their inkjetted nanopositioning flexure stage for air voids and morphological accuracy. The authors performed morphological deviation and defect analyses in comparison to nominal CAD designs. In the paper that followed, Lee and Tarbuton [105] described the final results of their work and concluded through testing of the flexure stage that their method was capable of producing a cost-effective alternative to other similar stages, achieving 25 nm positional precision over a 500 μ m range.

5.2 Medical measurements

Aside from the use of XCT in medical reverse engineering, medically focussed studies have also increasingly used XCT as a metrological tool. Wüst et al. [92], for example, used XCT to examine the geometry of bioprinted channels through comparison of cross-sectional area measurements to theoretical values. In another application, Huang et al. [96] used XCT to plan appropriate plate and screw trajectories for complex bone surgery, and then used an AM surgical guide to achieve these trajectories. The authors performed post-operative XCT to assess screw placement deviations with respect to the entry point, screw length and screw direction. Li et al. [97] used XCT to measure

integrated bone volume at four and twelve weeks following implantation of tissue scaffolds in rabbit femurs, while Mroz et al. [98] evaluated post-operative integrated bone volume using XCT. These authors all particularly show development in the use of metrology in medicine due to their consideration of measurement uncertainties; representing good practice not commonly observed previously in medical studies. This consideration implies that the medical field is beginning to adopt a more rigorous approach to implant production, in appreciation of modern manufacturing technology.

5.3 Measurements of lattice structures

Lattice structures that were impossible prior to the inception of AM due to tool access constraints have been identified as a useful output of AM, as when compared to fully dense parts, components utilising lattices in the place of bulk material have been shown to retain strength whilst reducing total mass. The use of lattices in tissue engineering represents an interesting field of research, but these structures are also of interest to engineers for a wide array of applications; from support structures, to heat dissipation and energy absorption [112]. As such, the past year has seen a series of studies into lattice materials and the recent review on microlattices by Xiong et al. [103] discusses the use of XCT in measurement of AM lattices at length. Van Grunsven et al. [95], Sercombe et al. [108] and Abele et al. [110] all produced metallic lattice structures via a variety of additive processing methods, and used XCT to compare built parts to CAD models. The latter paper by Abele et al. is of particular significance in that the authors critically analysed the comparison, noting that their findings were based on a specific geometry and material, and that further research is required to generalise findings. Sercombe et al. used XCT in their study to examine the deformation and failure of scaffolds through generation of FEA mesh models, which were then shown to agree with experimental data. This study indicates the capability of XCT for the purpose of FEA model generation; agreeing with the conclusions made in 2005 by Williams et al. [113].

5.4 AM and XCT artefact development

Further to the work discussed earlier in this review, development has occurred over the past year in the creation of test artefacts for both XCT and AM. Most notably, the AM general test artefact as proposed by Moylan et al. of NIST [64] (discussed in section 2.4) has been further developed towards standardisation. Moylan et al. [94] recently proposed the final version of the NIST test artefact for the evaluation of AM machines, comparing and contrasting previously proposed artefacts and summarising the features of each artefact. These features were then funnelled into specific design criteria for the standardised artefact. Based on this specification, the authors proposed the final artefact for measurement primarily by CMM and surface texture instruments, but also utilising ultrasonic NDE and XCT for examination of internal defects. Primary studies of the artefact were based on DMLS, binder jetting and material jetting builds, and demonstrated how metrology can be used to characterise and improve specific AM systems. The artefact was also successfully manufactured using SLM, SLA, EBM and SLS, and currently represents the de facto AM test artefact, pending appraisal at the time of writing by the ASTM F42 subcommittee on Test Methods and the ISO Technical Committee 261 on Additive Manufacturing. As a parallel, Möhring et al. [102] recently presented a general test artefact for analysis of various manufacturing processes, simulation methods, machining techniques and metrology strategies (see figure 9). The authors presented results of a round robin test of the artefact as manufactured by several parties using micro-milling (various manufacturers and machines) and AM (various FDM and SLM machines). A measurement strategy was defined and artefacts were measured using two XCT systems to compare with nominal CAD data, investigating global and individual feature alignment in order to analyse machine performance. Möhring et al. stated that the proposed test artefact intentionally included features that were challenging to produce and that additive processes were limited by the achieved process resolution. The authors concluded that through simulation, machine analysis and appropriate measurement, the separation and identification of the influencing factors on deviation from the nominal was possible, further stating that XCT was sufficient in part evaluation.

Teeter et al. [109] recently produced a test artefact specifically dedicated to dimensional verification in AM for biomedical applications. The authors designed the artefact in reference to the biomedical focus to contain holes, cylinders, gaps and lattices; studying how positioning on the build plate affected manufacture. Results showed that in this study location on the build plate had no effect on dimensional accuracy. The minimum feature size for this material and process (SLM of stainless steel) was found to be of 0.3 mm as features designed under this size were overbuilt to at least 0.3 mm, while the average deviation between as-built parts and the nominal was shown to be uniformly less than 0.1 mm. The authors concluded that the test artefact was effective for system and material verification, as well as for determination of build plate positional effects and minimum feature size. Measurements were made generally using a measurement microscope, while lattice components were measured using XCT.

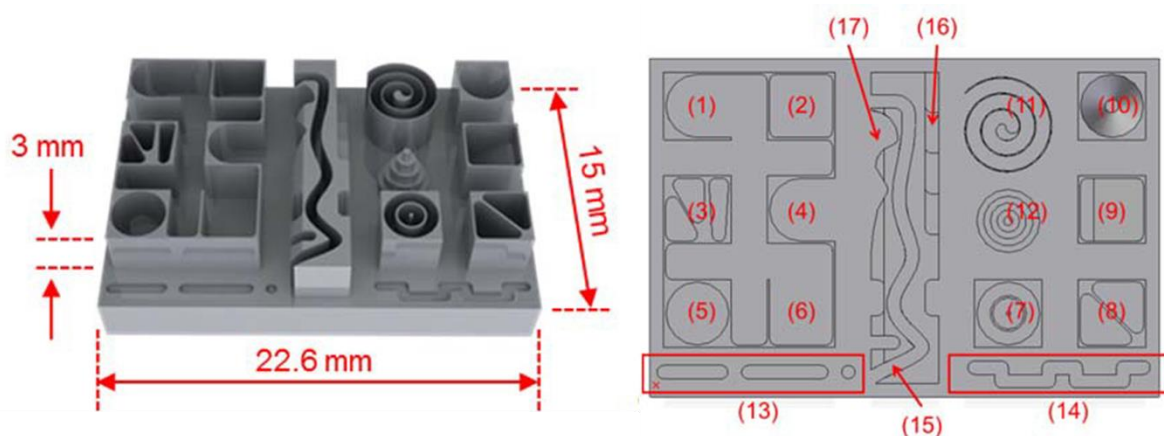


Figure 9. CAD model and top view of the Möhring et al. general test part with numbered features; reproduced from [102]. Each feature has defined purposes, generally designed to be difficult to manufacture and requiring an array of machining methods.

5.5 Hybrid dimensional measurements

As discussed in section 4.2 in regards to porosity measurements, XCT is now often used in collaboration with other measurement techniques to characterise parts, and this trend is similarly present in general dimensional measurements as well as porosity measurements. In illustration of this trend, Narra et al. [99] recently presented a method validating the mechanical behaviour of biodegradable SLA scaffolds using XCT with in-situ deformation, in which XCT measurements were made before and after compression loading using a mechanical compression device. The authors concluded in this case that the method was appropriate for validation of printed scaffolds and claimed that the related deformation fields could be used to corroborate simulated designs with as-built parts.

5.6 Relevant review work

Finally of note in this section, a number of reviews have been published in the past year regarding XCT and AM, and the findings of these reviews are worthy of discussion. In De Chiffre et al. [5], the authors examined all aspects of XCT in an industrial setting, highlighting that XCT is the only method currently able to perform non-destructive measurements of inner features as well as non-destructive porosity verification. De Chiffre et al. also discussed in detail the application of XCT to individual industries, including AM, as well as challenges and barriers to the technology, noting the following as primary concerns: measurement accuracy, large and high density parts, signal-to-noise ratio, reconstruction algorithms, task-specific measurement setups, multi-material measurements, setup time, measurement uncertainty, in-line measurements and high costs. Todorov et al. [93] studied NDE methods of complex AM alloy components, discussing defect formation and mitigation, and

qualitatively defining design complexity into five groups. Group one, for example, contained simple parts that could be inspected using conventional methods, whereas groups four and five comprised components producible exclusively by AM and requiring new NDE inspection techniques. The authors conducted a literature review into various NDE techniques and concluded that XCT is the most promising method for evaluation of complex geometries. The Manufacturing Technology Centre (MTC, UK) also recently produced two relevant reports reviewing the use of XCT for NDE and the use of simulation in enhancing inspection [100, 101]. In the first of these reports [100], Turner discussed the now common use of XCT in NDE, material characterisation, dimensional measurement and digitisation; through the acquisition of volumetric scan data from measured objects. Turner particularly observed how XCT is useful in NDE of AM components, due to the ability to extract internal surface data. The author further reviewed the state-of-the-art in XCT NDE and discussed several topics regarding his findings. The first of these points was in regards to the hardware trade-off during scans, discussing advantages and disadvantages of various systems. The second section addressed methods of compensation for the limitations of XCT, including: image artefacts and contrast, workpiece dimensions and penetration, and cycle time. Turner also highlighted the industrial applications of XCT, as well as the potential for future automation of the technology and the barriers to wider technological adoption. Turner noted the following as barriers to increased adoption: limited standardisation, large data volumes, system cost, a lack of understanding of system capability and personnel certification. Turner highlighted the use of XCT in AM and compared XCT to other NDE techniques (x-ray imaging, ultrasonic and acoustic resonance testing), concluding that XCT represents an attractive solution for NDE; particularly citing the lack of AM and XCT specification standards as the primary technological barrier. In the latter MTC report [101], Brierley and Akhtar summarised the latest developments in radiography for high speed inspection of AM parts. The authors examined the various commercial machines and software available; noting that there is a wealth of technologies but that high speed XCT is not possible without constraints on part size and density. Everton et al. [114] recently reviewed the current state of in-situ metrology and process monitoring for AM, in order to address the lack of quality assurance in AM parts. The authors noted the development of many approaches to in-situ measurements, finding that XCT has not yet been used in-situ, despite having the potential for in-situ AM process inspection. The authors attributed the reason for XCT not having yet been investigated for in-situ inspection to the difficulty that would be experienced integrating the technology into AM systems, in comparison to simpler camera or thermal based monitoring techniques. The authors concluded that camera and thermal based systems likely represent the future of in-situ process monitoring and control, but noted that more complex methods utilising NDE techniques capable of sub-surface inspection (such as XCT) may also be integrated in the future.

6. Conclusions and future research

The above discussion of current studies represents the state-of-the-art industrial use of XCT in AM. It is clear from the available literature that research utilising XCT and AM falls into two primary areas, although the number of unique applications is substantially in excess of this. These primary areas have been discussed in detail and it is possible to draw specific conclusions regarding each of the applications within each research area. It is of note that the majority of the literature examined in this review is in relation to AM of metal parts. While the discussion presented in this review reflects the available literature (which mainly focuses on metal AM), the conclusions made here should be assumed to be in reference primarily to metal parts unless otherwise stated. It may in some cases be possible to extrapolate the conclusions made here to cover polymer AM, but all conclusions are made in reference to the evaluated literature.

6.1 XCT for AM pore measurements

Through review of the aforementioned studies of porosity, it is clear that XCT is a well-suited tool in examination of designed and undesigned pores. As discussed, XCT porosity measurements of most metallic samples are not as accurate as measurements made by the Archimedes method, but represent

the most reliable non-destructive method of evaluating pore distribution within parts. It should however be noted that unlike XCT where a small sample is preferable to increase the achievable magnification, Archimedes measurements suffer from increased errors associated with the surface effects (bubbles attached to sample surfaces) for small samples with high surface area. Uncertainties in measurements made by the Archimedes method are also dependent on the density contrast between the sample material and the measurement fluid [34], which is low for polymer parts. Coupled with the problems discussed previously in measuring density of polymer parts using the Archimedes method, XCT can, for some parts, potentially produce better results than using the Archimedes method [33, 37]. XCT measurements can often be more accurate when compared to 2D, single layer, porosity measurements (via cross-sectioning) due to the nature of random sampling and relatively low numbers of pores. XCT is now commonly used alongside other measurements to correlate porosity and pore distribution with mechanical properties, and such studies have shown that pores routinely act as failure initiation sites. The main criticism of XCT porosity measurements is inaccuracy compared to Archimedes porosity measurements, which include information from pores of all sizes, while XCT is incapable of measuring pores smaller than the minimum voxel size. The solution to this problem is improvement of XCT resolution, which is a common focus area in XCT research.

The other main stream of future research will likely be the continued correlation of pore information with other information (e.g. mechanical) about parts, as discussed in section 4.2. As XCT scans are relatively expensive in comparison to other measurement techniques, it follows that if other measurements can provide approximate information regarding the internal geometry of parts, then the cost of verification can conceivably be reduced through the use of cheaper measurement techniques. By this, it may be possible to correlate the surface texture of an AM part with the part's near-surface porosity (a common feature in parts produced by powder bed fusion, relating to the interaction between border and hatch scans [51]). It is therefore conceivable that a relatively cheap measurement (for example, using a contact stylus instrument) could potentially provide information about near-surface porosity.

6.2 XCT for AM in dimensional metrology

XCT is now clearly becoming a vital tool in the repertoire of many metrologists, and the large number of studies using XCT in the context of dimensional measurement reflects this. The use of XCT in direct comparison to CAD data allows for the rigorous tolerancing of freeform surfaces that were previously very difficult to measure by CMM due to the difficulties faced in gaining a large number of points using a touch probe. XCT is also the sole industrially-viable method of gaining data relating to internal features of parts without destroying the part, as demonstrated throughout this review. As stated previously, therefore, works very well with AM; particularly in the measurement of lattice structures. As concluded in similar reviews regarding industrial metrology [3-5], future improvements of these measurements will focus on calibration and verification of XCT systems in regards to industrial metrology. Specific to the use of XCT in AM, there remains the potential for production of standardised artefacts, and those reviewed here represent likely candidates for standardisation. The artefact presented by NIST in particular represents the capabilities of AM production and allows measurements using XCT systems, although it rests with the relevant committees as to whether further development is required. As stated previously, however, the XCT measurements discussed by Moylan et al. regarding this artefact were implied to be for defect characterisation of small portions of the artefact, as opposed to for dimensional metrology, as the artefact is not optimised for XCT measurement due to the large variation in penetration lengths with part orientation. This penetration length variation represents a difficult scenario for XCT dimensional metrology, as the high aspect ratio of the artefact causes difficulties in image acquisition relating to the achievable resolution and image contrast. Imaging difficulties are present in XCT measurements of high aspect ratio objects because high energy x-rays are required for full penetration of the object's long side, while low energy x-rays are required to avoid scatter and overexposure of the object's short side [4]. This artefact can therefore

be considered non-ideal in terms of artefact design for XCT. It may also become apparent that an AM artefact more specific to XCT measurements should be developed, as the existing AM designs presented earlier do not necessarily represent objects that are easily measurable using XCT systems. Similarly, the artefacts currently used in XCT calibration and verification are not necessarily producible by additive methods, due to the resolution and material limits presented by many AM processes. For example, AM processes are not able to produce many features commonly found in reference artefacts, such as high precision spheres. As XCT will likely become the most common tool for AM product verification, the development of an AM specific XCT artefact may be required. As the precision of AM improves, it will facilitate the production of a new class of metrological artefacts to be used throughout the manufacturing sector.

An interesting area of XCT measurement that has not been widely covered is the use of XCT for the measurement of surfaces. Although resolution is generally poor compared to other surface measurement techniques, XCT scans are, as stated, the only method of measurement of internal surfaces. As shown, a number of studies have successfully extracted primary profiles from XCT data, so it follows that it should be possible to build up 3D surface maps of AM parts using similar techniques. The authors of this review therefore conclude that XCT represents an interesting potential method for the examination of internal AM surfaces. In terms of the potential limitations regarding XCT as an internal surface texture measurement method, the primary drawback of XCT is that the scan resolution strongly depends on the maximum achievable magnification, and therefore the overall part dimensions. Internal texture will naturally therefore be harder to measure for larger parts than smaller parts. A substantial limitation also exists regarding the exact determination of surfaces from XCT data. It has been shown previously that, primarily due to the beam hardening artefact, the offsets of internal edges differ from those of external edges [115]. As surfaces are often determined in reference to external surfaces, this may prove a substantial problem when examining internal surfaces.

6.3 Summary of conclusions

The combined use of XCT and AM has become increasingly important in various fields of engineering. The use of both technologies is becoming more established in advanced manufacturing and metrology, respectively, and a great deal of research has been put into increasing the use of both technologies for a range of applications within these fields. This research should continue, as adoption is not yet widespread. The following are primary barriers to the increased adoption:

- In measurement of AM part porosity: two primary requirements, regarding increased resolution for the detection of small pores to allow for higher accuracy and precision in pore measurement, and correlating porosity and pore distribution measurements to more cost effective measurement techniques to potentially reduce verification costs.
- In dimensional metrology of AM parts: a continuation of work regarding XCT system calibration and verification to increase technology adoption, as well as the production of new research regarding XCT measurement of surface texture.

The fields of XCT and AM have both come a long way since the first combined use of XCT and AM in the reproduction of a model skull by Mankovich et al. [15] in 1990, and XCT has progressed far beyond its roots as a reverse engineering tool since this time. The now common use of metrological XCT in engineering increasingly works in symbiosis with AM to recreate, as well as to verify, parts in a wide range of fields, and through continued research will aid in the acceptance of AM as an industrially viable manufacturing method.

Acknowledgements

The authors would like to thank the Engineering and Physical Sciences Research Council (EPSRC Grants EP/M008983/1 and EP/L01534X/1) and 3T RPD Ltd. for funding this work.

References

- [1] ISO/TC 213 1996 *Dimensional and geometrical product specifications and verification* (International Organisation for Standardization)
- [2] ISO 3534-2 1993 *Statistics - Vocabulary and symbols - part 2: statistical quality control* (International Organisation for Standardization)
- [3] Sun W, Brown S B and Leach R K 2012 *An overview of industrial x-ray computed tomography* NPL (London, UK: National Physical Laboratory)
- [4] Kruth J-P, Bartscher M, Carmignato S, Schmitt R, De Chiffre L and Weckenmann A 2011 Computed tomography for dimensional metrology *CIRP Ann. Manuf. Techn.* **60** 821-42
- [5] De Chiffre L, Carmignato S, Kruth J-P, Schmitt R and Weckenmann A 2014 Industrial applications of computed tomography *CIRP Ann. Manuf. Techn.* **63** 655-77
- [6] Hsieh J 2009 *Computed tomography: principles, design, artifacts, and recent advances* (Bellingham, WA, USA: SPIE Press)
- [7] Roscoe L 1988 *Stereolithography interface specification* 3DSystems (Rock Hill, SC, USA: 3D Systems Inc)
- [8] Gibson I, Rosen D and Stucker B 2014 *Additive manufacturing technologies: 3D printing, rapid prototyping, and direct digital manufacturing* (New York, NY, USA: Springer)
- [9] ASTM F2792 - 12a 2012 *Standard terminology for additive manufacturing technologies* (ASTM International)
- [10] Hull C W US 4575330 A *Apparatus for production of three-dimensional objects by stereolithography* 11 Mar 1986
- [11] Sachs E, Wylonis E, Allen S, Cima M and Guo H 2000 Production of injection molding tooling with conformal cooling channels using the three dimensional printing process *Polym. Eng. Sci.* **40** 1232-47
- [12] Zhang S, To S, Wang S and Zhu Z 2015 A review of surface roughness generation in ultra-precision machining *Int. J. Mach. Tool. Manu.* **91** 76-95
- [13] Vaezi M, Seitz H and Yang S 2013 A review on 3D micro-additive manufacturing technologies *Int. J. Adv. Manuf. Tech.* **67** 1721-54
- [14] Wijshoff H 2010 The dynamics of the piezo inkjet printhead operation *Phys. Rep.* **491** 77-177
- [15] Mankovich N J, Cheeseman A M and Stoker N G 1990 The display of three-dimensional anatomy with stereolithographic models *J. Digit. Imaging* **3** 200-3
- [16] Marro A, Bandukwala T and Mak W 2016 Three-dimensional printing and medical imaging: a review of the methods and Applications *Curr. Probl. Diagn. Radiol.* **45** 2-9
- [17] Ashley S 1993 Rapid prototyping for artificial body parts *Mech. Eng.* **115** 50-3
- [18] Berry E, Brown J, Connell M, Craven C, Efford N, Radjenovic A and Smith M 1997 Preliminary experience with medical applications of rapid prototyping by selective laser sintering *Med. Eng. Phys.* **19** 90-6
- [19] Jamieson R and Hacker H 1995 Direct slicing of CAD models for rapid prototyping *Rapid Prototyping J.* **1** 4-12
- [20] Losano F, Marinsek G, Merlo A M and Ricci M 1999 Computed tomography in the automotive field. Development of a new engine head case study *Proc. Deutsche Gesellschaft Zerstörungsfreie Prüfung BB* (Berlin, Germany: Deutsche Gesellschaft Zerstörungsfreie Prüfung) 10
- [21] Taud H, Martinez-Angeles R, Parrot J and Hernandez-Escobedo L 2005 Porosity estimation method by X-ray computed tomography *J. Petrol. Sci. Eng.* **47** 209-17
- [22] Hildebrand T and Rügsegger P 1997 A new method for the model-independent assessment of thickness in three-dimensional images *J. Microsc.* **185** 67-75
- [23] Heintl P, Müller L, Körner C, Singer R F and Müller F A 2008 Cellular Ti-6Al-4V structures with interconnected macro porosity for bone implants fabricated by selective electron beam melting *Acta Biomater.* **4** 1536-44
- [24] Heintl P, Korner C and Singer R F 2008 Selective electron beam melting of cellular titanium: mechanical properties *Adv. Eng. Mater.* **10** 882

- [25] Kerckhofs G, Schrooten J, Elicegui L, Van Bael S, Moesen M, Lomov S V and Wevers M 2008 Mechanical characterization of porous structures by the combined use of micro-CT and in-situ loading *17th World Conf. Non-Destructive Testing (WCNDT)* (Shanghai, China: WCNDT)
- [26] Lopez-Heredia M A, Sohier J, Gaillard C, Quillard S, Dorget M and Layrolle P 2008 Rapid prototyped porous titanium coated with calcium phosphate as a scaffold for bone tissue engineering *Biomaterials* **29** 2608-15
- [27] Ryan G E, Pandit A S and Apatsidis D P 2008 Porous titanium scaffolds fabricated using a rapid prototyping and powder metallurgy technique *Biomaterials* **29** 3625-35
- [28] Ibrahim D, Broilo T L, Heitz C, De Oliveira M G, De Oliveira H W, Nobre S M W, Dos Santos Filho J H G and Silva D N 2009 Dimensional error of selective laser sintering, three-dimensional printing and PolyJet™ models in the reproduction of mandibular anatomy *J. Craniomaxillofac. Surg.* **37** 167-73
- [29] Ryan G, McGarry P, Pandit A and Apatsidis D 2009 Analysis of the mechanical behavior of a titanium scaffold with a repeating unit-cell substructure *J. Biomed. Mater. Res. B Appl. Biomater.* **90** 894-906
- [30] Eshraghi S and Das S 2010 Mechanical and microstructural properties of polycaprolactone scaffolds with one-dimensional, two-dimensional, and three-dimensional orthogonally oriented porous architectures produced by selective laser sintering *Acta Biomater.* **6** 2467-76
- [31] Kerckhofs G, Pyka G, Loeckx D, Van Bael S, Schrooten J and Wevers M 2010 The combined use of micro-CT imaging, in-situ loading and non-rigid image registration for 3D experimental local strain mapping on porous bone tissue engineering scaffolds under compressive loading *Proc. European Conference for non-Destructive Testing (ECNDT)* (Moscow, Russia: European Federation for Non-Destructive Testing (EFNDT))
- [32] Duan B, Wang M, Zhou W Y, Cheung W L, Li Z Y and Lu W W 2010 Three-dimensional nanocomposite scaffolds fabricated via selective laser sintering for bone tissue engineering *Acta Biomater.* **6** 4495-505
- [33] Rösenberg S, Schmidt L and Schmid H 2011 Mechanical and physical properties – a way to assess quality of laser sintered parts *Solid Freeform Fabr. Symp. Proc.* (Austin, TX, USA: University of Texas Austin) 239-51
- [34] Spierings A, Schneider M and Eggenberger R 2011 Comparison of density measurement techniques for additive manufactured metallic parts *Rapid Prototyping J.* **17** 380-6
- [35] Van Bael S, Kerckhofs G, Moesen M, Pyka G, Schrooten J and Kruth J-P 2011 Micro-CT-based improvement of geometrical and mechanical controllability of selective laser melted Ti6Al4V porous structures *Mat. Sci. Eng.: A* **528** 7423-31
- [36] Dadbakhsh S and Hao L 2012 Effect of Al alloys on selective laser melting behaviour and microstructure of in situ formed particle reinforced composites *J. Alloys Compd.* **541** 328-34
- [37] Dupin S, Lame O, Barrès C and Charneau J-Y 2012 Microstructural origin of physical and mechanical properties of polyamide 12 processed by laser sintering *Eur. Polym. J.* **48** 1611-21
- [38] Pyka G, Burakowski A, Kerckhofs G, Moesen M, Van Bael S, Schrooten J and Wevers M 2012 Surface modification of Ti6Al4V open porous structures produced by additive manufacturing *Adv. Eng. Mater.* **14** 363-70
- [39] Truscello S, Kerckhofs G, Van Bael S, Pyka G, Schrooten J and Van Oosterwyck H 2012 Prediction of permeability of regular scaffolds for skeletal tissue engineering: a combined computational and experimental study *Acta Biomater.* **8** 1648-58
- [40] Van Bael S, Chai Y C, Truscello S, Moesen M, Kerckhofs G, Van Oosterwyck H, Kruth J-P and Schrooten J 2012 The effect of pore geometry on the in vitro biological behavior of human periosteum-derived cells seeded on selective laser-melted Ti6Al4V bone scaffolds *Acta Biomater.* **8** 2824-34
- [41] Yavari S A, Wauthlé R, Van Der Stok J, Riemsdag A, Janssen M, Mulier M, Kruth J-P, Schrooten J, Weinans H and Zadpoor A A 2013 Fatigue behavior of porous biomaterials manufactured using selective laser melting *Mat. Sci. Eng.: C* **33** 4849-58

- [42] Leuders S, Thöne M, Riemer A, Niendorf T, Tröster T, Richard H and Maier H 2013 On the mechanical behaviour of titanium alloy TiAl6V4 manufactured by selective laser melting: fatigue resistance and crack growth performance *Int. J. Fatigue* **48** 300-7
- [43] Van Bael S, Desmet T, Chai Y C, Pyka G, Dubrueel P, Kruth J-P and Schrooten J 2013 In vitro cell-biological performance and structural characterization of selective laser sintered and plasma surface functionalized polycaprolactone scaffolds for bone regeneration *Mat. Sci. Eng.: C* **33** 3404-12
- [44] Ghita O, James E, Trimble R and Evans K E 2014 Physico-chemical behaviour of poly (ether ketone)(PEK) in high temperature laser sintering (HT-LS) *J. Mater. Process. Technol.* **214** 969-78
- [45] Rouholamin D and Hopkinson N 2014 An investigation on the suitability of micro-computed tomography as a non-destructive technique to assess the morphology of laser sintered nylon 12 parts *Proc. Inst. Mech. Eng. Pt. B: J. Eng. Manuf.* **228** 1529-42
- [46] Ziółkowski G, Chlebus E, Szymczyk P and Kurzac J 2014 Application of x-ray CT method for discontinuity and porosity detection in 316L stainless steel parts produced with SLM technology *Arch. Civ. Mech. Eng.* **14** 608-14
- [47] Hrabec N W, Heintz P, Flinn B, Körner C and Bordia R K 2011 Compression-compression fatigue of selective electron beam melted cellular titanium (Ti-6Al-4V) *Journal of Biomedical Materials Research Part B: Applied Biomaterials* **99** 313-20
- [48] Attar H, Calin M, Zhang L, Scudino S and Eckert J 2014 Manufacture by selective laser melting and mechanical behavior of commercially pure titanium *Mat. Sci. Eng.: A* **593** 170-7
- [49] Zarringhalam H, Hopkinson N, Kamperman N and De Vlieger J 2006 Effects of processing on microstructure and properties of SLS nylon 12 *Mat. Sci. Eng.: A* **435** 172-80
- [50] Gogolewski S, Czerntawska K and Gastorek M 1980 Effect of annealing on thermal properties and crystalline structure of polyamides. Nylon 12 (polylauro lactam) *Colloid. Polym. Sci.* **258** 1130-6
- [51] Léonard F, Tammam-Wilms S, Prangnell P B, Todd I and Withers P J 2012 Assessment by x-ray CT of the effects of geometry and build direction on defects in titanium ALM parts *Conf. Industrial Computed Tomography (iCT)* (Wels, Austria: Shaker Verlag) 85-93
- [52] Yan C, Hao L, Hussein A and Raymond D 2012 Evaluations of cellular lattice structures manufactured using selective laser melting *Int. J. Mach. Tool. Manu.* **62** 32-8
- [53] Xia Y, Zhou P, Cheng X, Xie Y, Liang C, Li C and Xu S 2013 Selective laser sintering fabrication of nano-hydroxyapatite/poly-ε-caprolactone scaffolds for bone tissue engineering applications *Int. J. Nanomedicine* **8** 4197-273
- [54] Fukuda A, Takemoto M, Saito T, Fujibayashi S, Neo M, Pattanayak D K, Matsushita T, Sasaki K, Nishida N and Kokubo T 2011 Osteoinduction of porous Ti implants with a channel structure fabricated by selective laser melting *Acta Biomater.* **7** 2327-36
- [55] Van Der Stok J, Van Der Jagt O P, Amin Yavari S, De Haas M F, Waarsing J H, Jahr H, Van Lieshout E M, Patka P, Verhaar J A and Zadpoor A A 2013 Selective laser melting-produced porous titanium scaffolds regenerate bone in critical size cortical bone defects *J. Orth. Res.* **31** 792-9
- [56] Pyka G, Kerckhofs G, Braem A, Mattheys T, Schrooten J and Wevers M 2010 Novel micro-ct based characterization tool for surface roughness measurements of porous structures *SkyScan User Meeting* (Mechelen, Belgium: SkyScan User Meeting)
- [57] Kerckhofs G, Pyka G, Moesen M, Van Bael S, Schrooten J and Wevers M 2013 High-resolution microfocus x-ray computed tomography for 3D surface roughness measurements of additive manufactured porous materials *Adv. Eng. Mater.* **15** 153-8
- [58] Pyka G, Kerckhofs G, Papantoniou I, Speirs M, Schrooten J and Wevers M 2013 Surface roughness and morphology customization of additive manufactured open porous Ti6Al4V structures *Materials* **6** 4737-57
- [59] Leach R K 2001 *The measurement of surface texture using stylus instruments* NPL (London, United Kingdom: National Physical Laboratory)
- [60] Triantaphyllou A, Giusca C L, Macaulay G D, Roerig F, Hoebel M, Leach R K, Tomita B and Milne K A 2015 Surface texture measurement for additive manufacturing *Surf. Topog.: Metrol. Prop.* **3** 024002

- [61] Carmignato S, Pierobon A, Rampazzo P, Parisatto M and Savio E 2012 CT for industrial metrology-accuracy and structural resolution of CT dimensional measurements *Conf. Industrial Computed Tomography (iCT)* (Wels, Austria: Shaker Verlag)
- [62] Carmignato S 2012 Accuracy of industrial computed tomography measurements: experimental results from an international comparison *CIRP Ann. Manuf. Techn.* **61** 491-4
- [63] Kiekens K, Welkenhuyzen F, Tan Y, Bleys P, Voet A, Kruth J and Dewulf W 2011 A test object with parallel grooves for calibration and accuracy assessment of industrial computed tomography (CT) metrology *Meas. Sci. Technol.* **22** 115502
- [64] Moylan S, Slotwinski J, Cooke A, Jurrens K and Donmez M A 2012 Proposal for a standardized test artifact for additive manufacturing machines and processes *Solid Freeform Fabr. Symp. Proc.* (Austin, TX, USA: University of Texas Austin) 6-8
- [65] Laycock S, Bell G, Corps N, Mortimore D, Cox G, May S and Finkel I 2015 Using a combination of micro-computed tomography, CAD and 3D printing techniques to reconstruct incomplete 19th-century Cantonese chess pieces *J. Comput. Cult. Herit.* **7** 25
- [66] Howe R, Shahbazmohamadi S, Bass R and Singh P 2014 Digital evaluation and replication of period wind instruments: the role of micro-computed tomography and additive manufacturing *Early Music* **42** 529-36
- [67] Ishida N and Kishimoto N 2015 Three-dimensional imaging of the Jurassic radiolarian *Protunuma? ochiensis* Matsuoka: an experimental study using high-resolution x-ray micro-computed tomography *Volumina Jurassica* **13** 77-82
- [68] Henson K D 2015 *Stories in bone still told: digitization and replication of the clover Site, fort ancient human remains* Master's Thesis Marshall University
- [69] Appleby J, Mitchell P D, Robinson C, Brough A, Ruddy G, Harris R A, Thompson D and Morgan B 2014 The scoliosis of Richard III, last Plantagenet King of England: diagnosis and clinical significance *Lancet* **383** 1944
- [70] Cox S C, Thornby J A, Gibbons G J, Williams M A and Mallick K K 2015 3D printing of porous hydroxyapatite scaffolds intended for use in bone tissue engineering applications *Mat. Sci. Eng.: C* **47** 237-47
- [71] Ziegelmeier S, Christou P, Wöllecke F, Tuck C, Goodridge R, Hague R, Krampe E and Wintermantel E 2015 An experimental study into the effects of bulk and flow behaviour of laser sintering polymer powders on resulting part properties *J. Mater. Process. Technol.* **215** 239-50
- [72] Grünberger T and Domröse R 2014 Optical in-process monitoring of direct metal laser sintering (DMLS) *Laser Tech. J.* **11** 40-2
- [73] Slotwinski J A, Garboczi E J and Hebenstreit K M 2014 Porosity measurements and analysis for metal additive manufacturing process control *J. Res. Natl. Inst. Stand. Technol.* **119** 494-528
- [74] Nassar A, Spurgeon T and Reutzel E 2014 Sensing defects during directed-energy additive manufacturing of metal parts using optical emissions spectroscopy *Solid Freeform Fabr. Symp. Proc.* (Austin, TX, USA: University of Texas Austin) 278-87
- [75] Van Uden S, Silva-Correia J, Correló V, Oliveira J and Reis R 2015 Custom-tailored tissue engineered polycaprolactone scaffolds for total disc replacement *Biofabrication* **7** 015008
- [76] Raguvarun K, Balasubramaniam K, Rajagopal P, Palanisamy S, Nagarajah R, Hoye N, Curiri D and Kapoor A 2015 A study of internal structure in components made by additive manufacturing process using 3 D X-ray tomography *AIP Conf. Proc. vol 1650: 41st Annu. Rev. of Progress in Quantitative Nondestructive Evaluation (QNDE)* vol 34 (Boise, ID, USA: AIP Publishing) 146-55
- [77] Chou R, Milligan J, Paliwal M and Brochu M 2015 Additive manufacturing of Al-12Si alloy via pulsed selective laser melting *JOM-J. Min. Met. Mat. S.* **67** 590-6
- [78] Mireles J, Ridwan S, Morton P A, Hinojos A and Wicker R B 2015 Analysis and correction of defects within parts fabricated using powder bed fusion technology *Surf. Topog.: Metrol. Prop.* **3** 034002

- [79] Siddique S, Imran M, Rauer M, Kaloudis M, Wycisk E, Emmelmann C and Walther F 2015 Computed tomography for characterization of fatigue performance of selective laser melted parts *Mater. Des.* **83** 661-9
- [80] Carlton H D, Haboub A, Gallegos G F, Parkinson D Y and Macdowell A A 2015 Damage evolution and failure mechanisms in additively manufactured stainless steel *Mat. Sci. Eng.: A* **651** 406–14
- [81] Leuders S, Vollmer M, Brenne F, Tröster T and Niendorf T 2015 Fatigue strength prediction for titanium alloy TiAl6V4 manufactured by selective laser melting *Metall. Mater. Trans. A* **46** 1-8
- [82] Kasperovich G and Hausmann J 2015 Improvement of fatigue resistance and ductility of TiAl6V4 processed by selective laser melting *J. Mater. Process. Technol.* **220** 202-14
- [83] Attar H, Löber L, Funk A, Calin M, Zhang L, Prashanth K, Scudino S, Zhang Y and Eckert J 2015 Mechanical behavior of porous commercially pure Ti and Ti–TiB composite materials manufactured by selective laser melting *Mat. Sci. Eng.: A* **625** 350-6
- [84] Maskery I, Aboulkhair N T, Corfield M R, Tuck C, Clare A T, Leach R K, Wildman R D, Ashcroft I A and Hague R J M 2015 Quantification and characterisation of porosity in selectively laser melted Al–Si10–Mg using x-ray computed tomography *Mater. Charact.* **111** 193–204
- [85] Chlebus E, Kuźnicka B, Dziedzic R and Kurzynowski T 2015 Titanium alloyed with rhenium by selective laser melting *Mat. Sci. Eng.: A* **620** 155-63
- [86] Castilho M, Gouveia B, Pires I, Rodrigues J and Pereira M 2015 The role of shell/core saturation level on the accuracy and mechanical characteristics of porous calcium phosphate models produced by 3Dprinting *Rapid Prototyping J.* **21** 43-55
- [87] Rezayat H, Zhou W, Siriruk A, Penumadu D and Babu S 2015 Structure-mechanical property relationship in fused deposition modelling *Mater. Sci. Technol.* **31** 895-903
- [88] Tammam-Williams S, Zhao H, Léonard F, Derguti F, Todd I and Prangnell P 2015 XCT analysis of the influence of melt strategies on defect population in Ti–6Al–4V components manufactured by selective electron beam melting *Mater. Charact.* **102** 47-61
- [89] Berretta S, Evans K E and Ghita O 2015 Processability of PEEK, a new polymer for high temperature laser sintering (HT-LS) *Eur. Polym. J.* **68** 243-66
- [90] Slotwinski J, Garboczi E, Stutzman P, Ferraris C, Watson S and Peltz M 2014 Characterization of metal powders used for additive manufacturing *J. Res. Natl. Inst. Stand. Technol.* **119** 460-93
- [91] Slotwinski J A and Garboczi E J 2015 Metrology needs for metal additive manufacturing powders *JOM-J. Min. Met. Mat. S.* **67** 538-43
- [92] Wüst S, Müller R and Hofmann S 2014 3D Bioprinting of complex channels—effects of material, orientation, geometry, and cell embedding *J. Biomed. Mater. Res. A* **103** 2258-580
- [93] Todorov E, Spencer R, Gleeson S, Jamshidinia M and Kelly S M 2014 *America makes: national additive manufacturing innovation institute (NAMII) project 1: nondestructive evaluation (NDE) of complex metallic additive manufactured (AM) structures* DTIC (Columbus, OH, USA: Edison Welding Inst. Inc.)
- [94] Moylan S, Slotwinski J, Cooke A, Jurens K and Donmez M A 2014 An additive manufacturing test artifact *J. Res. Natl. Inst. Stand. Technol.* **119** 429-59
- [95] Van Grunsven W, Hernandez-Nava E, Reilly G C and Goodall R 2014 Fabrication and mechanical characterisation of titanium lattices with graded porosity *Metals* **4** 401-9
- [96] Huang H, Hsieh M-F, Zhang G, Ouyang H, Zeng C, Yan B, Xu J, Yang Y, Wu Z and Huang W 2015 Improved accuracy of 3D-printed navigational template during complicated tibial plateau fracture surgery *Australas. Phys. Eng. Sci. Med.* **38** 109-17
- [97] Li Y, Yang W, Li X, Zhang X, Wang C, Meng X, Pei Y, Fan X, Lan P and Wang C 2015 Improving osteointegration and osteogenesis of three-dimensional porous Ti6Al4V scaffolds by polydopamine-assisted biomimetic hydroxyapatite coating *ACS Appl. Mater. Inter.* **7** 5715-24
- [98] Mroz W, Budner B, Syroka R, Niedzielski K, Golański G, Słószarczyk A, Schwarze D and Douglas T E 2015 In vivo implantation of porous titanium alloy implants coated with magnesium-

- doped octacalcium phosphate and hydroxyapatite thin films using pulsed laser deposition *J. Biomed. Mater. Res. B Appl. Biomater.* **103** 151-8
- [99] Narra N, Blanquer S, Haimi S, Grijpma D and Hyttinen J 2015 μ CT based assessment of mechanical deformation of designed PTMC scaffolds *Clin. Hemorheol. Microcirc.* **60** 99-108
- [100] Turner N 2015 *A10998 - Technology review of x-ray CT for inspection and dimensional metrology: deliverable 1: review of x-ray computed tomography for non-destructive testing applications* MTC (Coventry, UK: Manufacturing Technology Centre)
- [101] Brierley N and Akhtar S 2015 *A11108 - Simulation enhanced inspection: deliverable 1: background review report* MTC (Coventry, UK: Manufacturing Technology Centre)
- [102] Möhring H-C, Kersting P, Carmignato S, Yagüe-Fabra J, Maestro M, Jiménez R, Ferraris E, Tunc L, Bleicher F and Wits W 2015 A testpart for interdisciplinary analyses in micro production engineering *Procedia CIRP* **28** 106-12
- [103] Xiong J, Mines R, Ghosh R, Vaziri A, Ma L, Ohrndorf A, Christ H J and Wu L 2015 Advanced micro-lattice materials *Adv. Eng. Mater.* **17** 1253-64
- [104] Villarraga H, Lee C, Corbett T, Tarbuton J A and Smith S T 2015 Assessing additive manufacturing processes with X-ray CT metrology *ASPE Spring Topical Meeting: Achieving Precision Tolerances in Additive Manufacturing* (Raleigh, NC, USA: ASPE) 116-21
- [105] Lee C and Tarbuton J A 2015 Compliance and control characteristics of an additive manufactured-flexure stage *Rev. Sci. Instrum.* **86** 045107
- [106] Cooper D, Thornby J, Blundell N, Henrys R, Williams M A and Gibbons G 2015 Design and manufacture of high performance hollow engine valves by additive layer manufacturing *Mater. Des.* **69** 44-55
- [107] Seol S K, Kim D, Lee S, Kim J H, Chang W S and Kim J T 2015 Electrodeposition-based 3D printing of metallic microarchitectures with controlled internal structures *Small* **11** 3896-902
- [108] Sercombe T B, Xu X, Challis V, Green R, Yue S, Zhang Z and Lee P D 2015 Failure modes in high strength and stiffness to weight scaffolds produced by selective laser melting *Mater. Des.* **67** 501-8
- [109] Teeter M G, Kopacz A J, Nikolov H N and Holdsworth D W 2015 Metrology test object for dimensional verification in additive manufacturing of metals for biomedical applications *Proc. Inst. Mech. Eng. Pt. H: J. Eng. Med.* **229** 20-7
- [110] Abele E, Stoffregen H A, Klimkeit K, Hoche H and Oechsner M 2015 Optimisation of process parameters for lattice structures *Rapid Prototyping J.* **21** 117-27
- [111] Lin M, Morgan B, Jovanovic I, Hsieh C, Liu Y and Chen S 2015 Progress on the study of direct laser electron acceleration in density-modulated plasma waveguides *Proc. 6th Int. Particle Accelerator Conference (IPAC)* (Richmond, VA, USA: JACoW) 2723-5
- [112] Evans A G, Hutchinson J W, Fleck N A, Ashby M and Wadley H 2001 The topological design of multifunctional cellular metals *Prog. Mater. Sci.* **46** 309-27
- [113] Williams J M, Adewunmi A, Schek R M, Flanagan C L, Krebsbach P H, Feinberg S E, Hollister S J and Das S 2005 Bone tissue engineering using polycaprolactone scaffolds fabricated via selective laser sintering *Biomaterials* **26** 4817-27
- [114] Everton S K, Hirsch M, Stavroulakis P, Leach R K and Clare A T 2016 Review of in-situ process monitoring and in-situ metrology for metal additive manufacturing *Mater. Des.* **95** 431-45
- [115] Dewulf W, Tan Y and Kiekens K 2012 Sense and non-sense of beam hardening correction in CT metrology *CIRP Ann. Manuf. Techn.* **61** 495-8