

Web Design for Customer Usability

Andrea Bartelstein andi@jhu.edu

Michael Creech mcreech@jhu.edu

David Reynolds davidr@jhu.edu

Johns Hopkins University

Sheridan Libraries Profile

- ▶ Support schools of Arts & Sciences, Engineering, Business and Education
- ▶ Large and growing part-time and distant student population
- ▶ Other Hopkins libraries (medical, international studies, music, etc.) manage their own Web sites



The Sheridan Libraries of The Johns Hopkins University

3400 N. Charles St., Baltimore, MD 21218
1-800-315-1947 410-516-8335

SEARCH THIS WEB SITE

Go

INFORMATION FOR
PEOPLE WITH DISABILITIES



QUESTIONS?
Ask a Librarian

What's New

Library Announcements
New Resources
Calendar of Events
Exhibits
Press Releases

Getting Help

Who Can Help Me?

About the Libraries

The Sheridan Libraries Overview
Hours, Directions & Parking
Departments & Staff Directories
Digital Library Initiatives
Entrepreneurial Library Program
Friends of the Libraries
Employment Opportunities
Additional Hopkins Libraries
Area Libraries

FIND IT

Research Tools

- JHU Libraries Catalog
- Articles and More
- Find a Database **NEW**
- Govt. Pubs./Maps/Law
- Research Guides
- The WorldCat Catalog

Electronic Reserves

- Readings
- Exams
- Notes
- Submitting Course Reserves Lists

Special Collections

- Rare Books
- Manuscripts
- Archives
- Sheet Music
- Digital Resources
- JHU Dissertations/Theses

GET IT

- Borrowing & Renewing JHU Libraries Materials
- Borrowing from Other Libraries
- Off-Campus & Distance Learning Library Services
- Call Number Locations
- Computing & Printing
- Connecting from Home or on the Road
- Eisenhower Express Document Delivery

USE IT

- **Is It Worth Using?**
Evaluating Internet Information
- **Use It Legally**
Copyright
- **Use It Accurately**
Citing Sources
- **Writing for Publication**
Tools for Getting Started
- **New Scholarly Publishing Models**

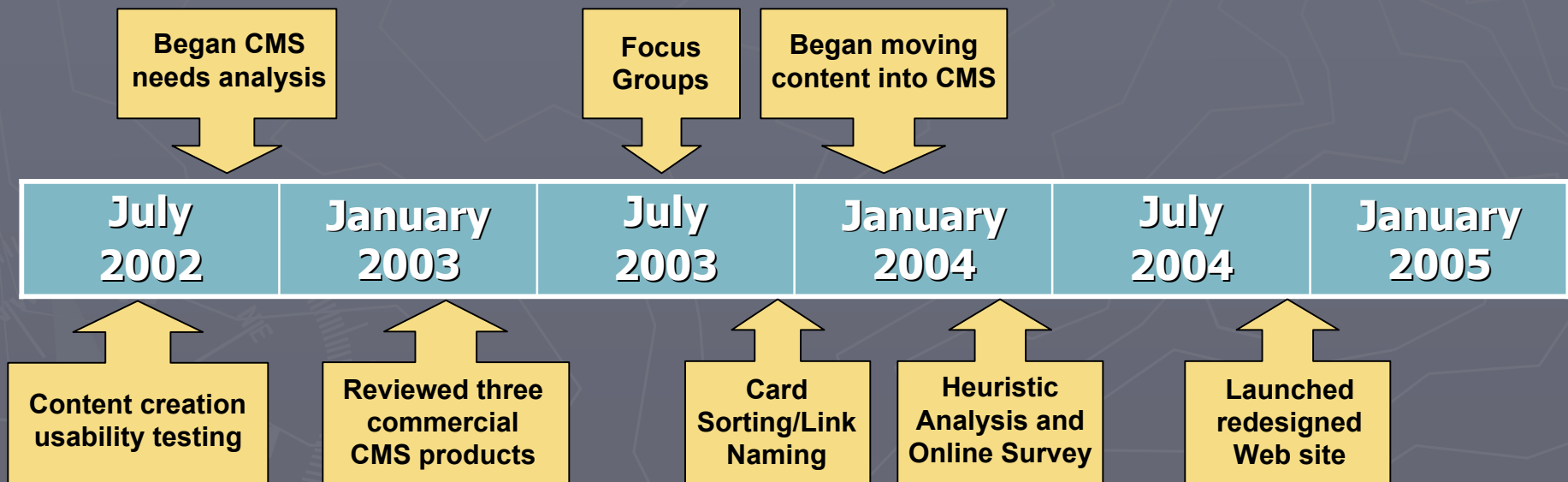
Milton S. Eisenhower Library | Albert D. Hutzler Reading Room ("the HUT") | John Work Garrett Library | George Peabody Library

© The Sheridan Libraries 2002

JOHNS HOPKINS
UNIVERSITY

2002-2004

Sheridan Libraries Web Redesign Timeline



Challenge 1: Home-grown CMS did not work for content creators

- ▶ Difficult to create and publish Web content
- ▶ Performed needs analysis for commercial CMS
- ▶ Content creator analysis confirmed need for CMS and helped drive selection process

Heuristic Evaluation and Field Observation


- ▶ Problems with consistency, ambiguity, and efficiency
- ▶ Limited system communication
- ▶ Supported decision to conduct CMS needs analysis

Content Creators Survey

- ▶ Many content creators lack Web publishing skills
- ▶ Overlap of roles
- ▶ Duplication of effort

Challenge 2: Conceptual framework not effective

- ▶ “Find it, get it, use it” concept was confusing
- ▶ Functional analysis and focus groups reinforced need for change
- ▶ Card sorting/link naming exercise provided better data about users’ conceptual models



The Sheridan Libraries
of The Johns Hopkins University

3400 N. Charles St., Baltimore, MD 21218
1-800-315-1947 410-516-8335

SEARCH THIS WEB SITE

INFORMATION FOR PEOPLE WITH DISABILITIES

? **QUESTIONS?**
Ask a Librarian

What's New

- Library Announcements
- New Resources
- Calendar of Events
- Exhibits
- Press Releases

Getting Help

- Who Can Help Me?

About the Libraries

- The Sheridan Libraries Overview
- Hours, Directions & Parking
- Departments & Staff Directories
- Digital Library Initiatives
- Entrepreneurial Library Program
- Friends of the Libraries
- Employment Opportunities
- Additional Hopkins Libraries
- Area Libraries

FIND IT

Research Tools

- JHU Libraries Catalog
- Articles and More
- Find a Database **NEW**
- Govt. Pubs./Maps/Law
- Research Guides
- The WorldCat Catalog

Electronic Reserves

- Readings
- Exams
- Notes
- Submitting Course Reserves Lists

Special Collections

- Rare Books
- Manuscripts
- Archives
- Sheet Music
- Digital Resources
- JHU Dissertations/Theses

GET IT

- Borrowing & Renewing JHU Libraries Materials
- Borrowing from Other Libraries
- Off-Campus & Distance Learning Library Services
- Call Number Locations
- Computing & Printing
- Connecting from Home or on the Road
- Eisenhower Express Document Delivery

USE IT

- **Is It Worth Using?**
Evaluating Internet Information
- **Use It Legally**
Copyright
- **Use It Accurately**
Citing Sources
- **Writing for Publication**
Tools for Getting Started
- **New Scholarly Publishing Models**

Milton S. Eisenhower Library | Albert D. Hutzler Reading Room ("the HUT") | John Work Garrett Library | George Peabody Library

© The Sheridan Libraries 2002



2002-2004

Functional Analysis

- ▶ Web site used to complete specific tasks
 - Catalog searching
 - Using other electronic resources
- ▶ Not usually interested in exploring site
- ▶ Site too cluttered; should be simplified
- ▶ Problems with repetition, terminology

Focus Groups

- ▶ Customers use site for very specific purposes
- ▶ Most used: "Find It." Least used: "Use It"
- ▶ Little interest in customization, "My Library"
- ▶ Web site reflects "culture of helpfulness"

Challenge 3: Home page “too democratic”

- ▶ Focus groups felt Web site should help rank relative importance of items
- ▶ Insufficient usability work at outset led to “too democratic” home page
- ▶ Non-usability considerations overly influenced design decisions

Strategies

- ▶ Card sorting and link naming
- ▶ Heuristic evaluation of other library sites
- ▶ Survey/ballot of page designs

Card Sorting & Link Naming

- ▶ Used an online card sorting and link naming tool (available from NIST)
- ▶ Asked users to sort links from home page as they would expect them to be organized
- ▶ Asked users to name items based on functionality

Link Naming

This card-sorting and naming study involves two steps. The first step is naming. Please read the description for each of these link names. Think about what you would call that page. If you would change the name of the page, please write the new name that you would suggest in the "Better name?" text box next to that link name.

Please don't use leading and trailing spaces or double quotes or ~, as they will be removed from any names which you enter.

Link name: Connecting from Home or on the Road	Better name?	<input type="text"/>
Description: Links to options for using library resources away from campus.		
Link name: Call Number Locations	Better name?	<input type="text"/>
Description: Table of Call Numbers and their corresponding floor locations.		
Link name: Find out if we have electronic access to a specific journal	Better name?	<input type="text"/>
Description: Link that helps you find out if the library has an electronic version of a specific journal.		
Link name: ICPSR, Census, Health, Business	Better name?	<input type="text"/>
Description: Links to statistical resources for Census, Health, Business and more.		
Link name: Eisenhower Express Photocopy Order Form	Better name?	<input type="text"/>
Description: Form for Eisenhower Express.		
Link name: New Tools for a New Publishing Era	Better name?	<input type="text"/>
Description: Information about the JHU Scholarly Communications group and open access initiatives at JHU.		
Link name: Archives	Better name?	<input type="text"/>
Description: Links to information about the JHU archives in Special Collections.		
Link name: Use It Accurately. Citing Sources	Better name?	<input type="text"/>
Description: Information on how to cite a source correctly.		
Link name: Sheet Music	Better name?	<input type="text"/>
Description: Links to digitized historic sheet music collection in Special Collections.		
Link name: Guidelines for the Preparation of Dissertations and Theses	Better name?	<input type="text"/>
Description: Guidelines for the preparation of JHU dissertations and theses.		
Link name: Area Libraries	Better name?	<input type="text"/>
Description: Find links to local college, university, public, and other research libraries.		
Link name: LexisNexis Congressional, LexisNexis State ...	Better name?	<input type="text"/>
Description: Links to the Lexis/Nexis Congressional and Lexis/Nexis State database.		
Link name: Popular CD ROMs	Better name?	<input type="text"/>
Description: Link to list of popular government CD ROMs.		
Link name: Newspapers	Better name?	<input type="text"/>
Description: Links to electronic newspapers or databases of newspaper articles citations.		

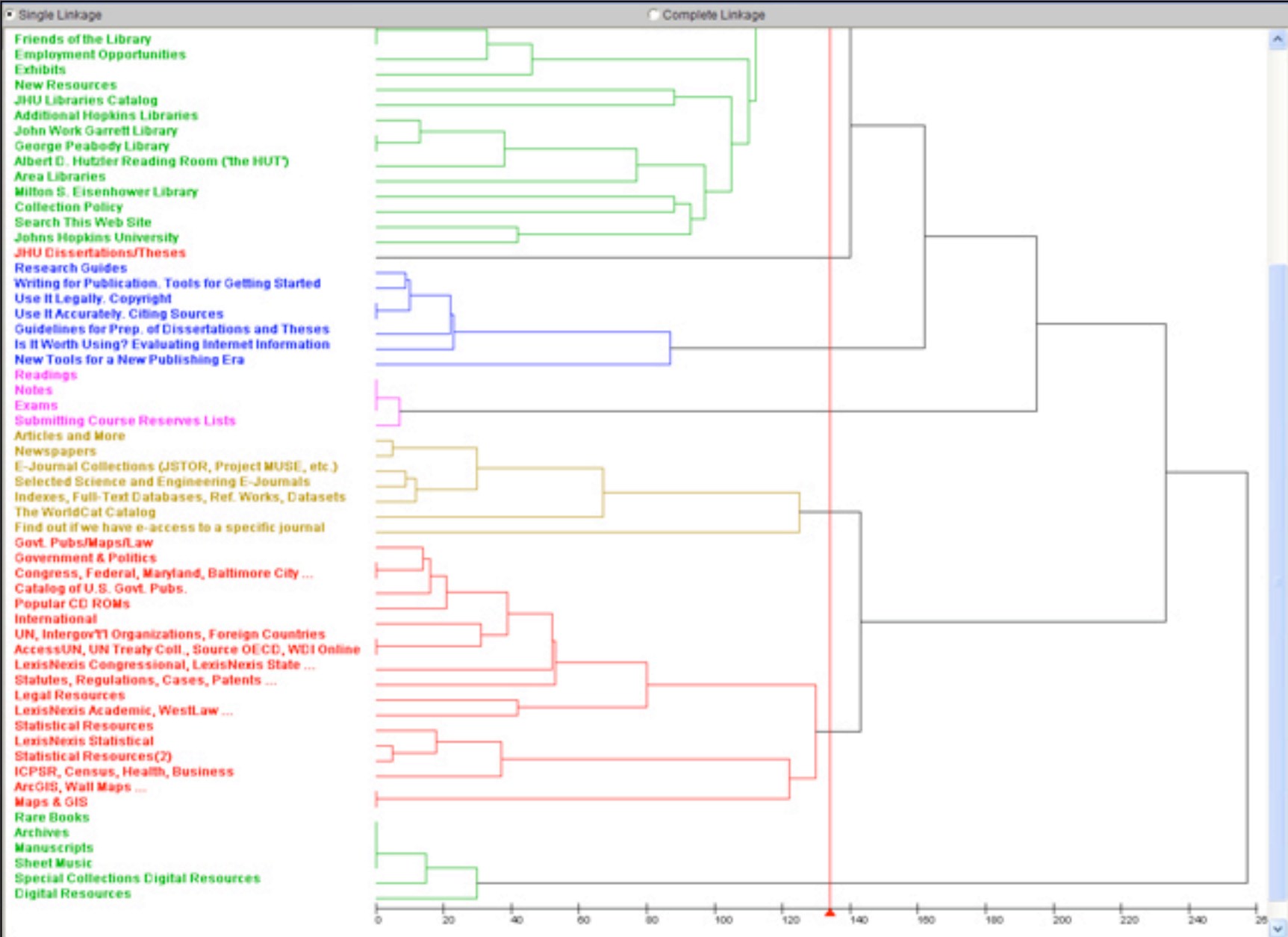
[Go to card sort](#)

Card Sorting Exercise

Instructions:

The second step is sorting. Please assign each of the items in the list on the left to one of the category boxes on the right, putting items that you think belong together into the same category. After all the items have been sorted, name each category by typing in the box at the upper left hand corner. You may make as many categories as you wish. Please put every item into a category. You may make changes until you decide that you are finished and hit the Done button.

Items	Categories
<ul style="list-style-type: none">AccessJRN, UN Treasr Coll., Source DECD, WCI OnlineAdditional Hopkins LibrariesAlbert D. Hubler Reading Room (the HUT)ArchGIS, Wall Maps ...ArchivesArea LibrariesArticles and MoreAudiobook CenterBorrowing & Renewing JHU Libraries MaterialsBorrowing from Other LibrariesCalendar of EventsCall Number LocatorsCatalog of U.S. Govt. Pubs.Collection PolicyCongress, Federal, Maryland, Baltimore City ...Connecting from Home or on the RoadDigital ResourcesE-Journal Collections (JSTOR, Project MUSE, etc.)E-Mail Reference ServiceEisenhower Express Document DeliveryEisenhower Express Photocopy Order FormEmployment OpportunitiesExamsExhibitsFind out if we have e-access to a specific journalFiles of the LibraryGeorge Peabody LibraryGovernment & PoliticsGovt. Pubs/Maps/LawGuidelines for Prep. of Dissertations and ThesesICPDR, Census, Health, BusinessIndexes, Full-Text Databases, Ref Works, DatasetsInformation for People with DisabilitiesInterlibrary Services Request FormInternationalIs it Worth Using? Evaluating Internet InformationJHU Dissertations/ThesesJHU Libraries CatalogJohns Hopkins UniversityJohns Hopkins UniversityLegal ResourcesLexisNexis Academic, WestLawLexisNexis Congressional, LexisNexis State ...LexisNexis StatisticalLibrary AnnouncementsManuscriptsMaps & GISMilton S. Eisenhower LibraryMoravia Park Request FormNew ResourcesNew Tools for a New Publishing EraNewslettersNotesOff-Campus & Distance Learning Library ServicesPopular CD ROMsPress ReleasesPrinting & PhotocopyingQuestions? Ask a LibrarianRare BooksReadingsRenew a Checked-Out ItemResearch GuidesSearch This Web SiteSelected Science and Engineering E-JournalsSheet MusicSpecial Collections Digital ResourcesStatistical Resources	<div data-bbox="989 412 1136 440">[Category Name Box]</div> <div data-bbox="989 724 1136 751">[Category Name Box]</div> <div data-bbox="989 1037 1136 1065">[Category Name Box]</div>
Name/ID:	Create new category
Done	Comments: [Text Area]

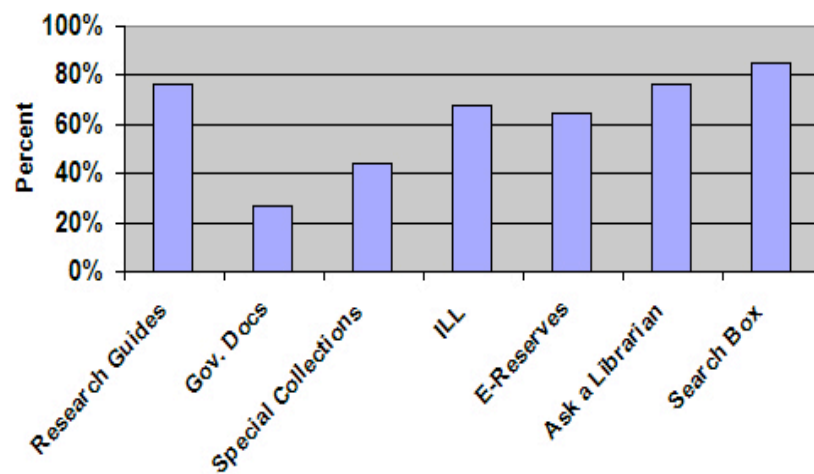
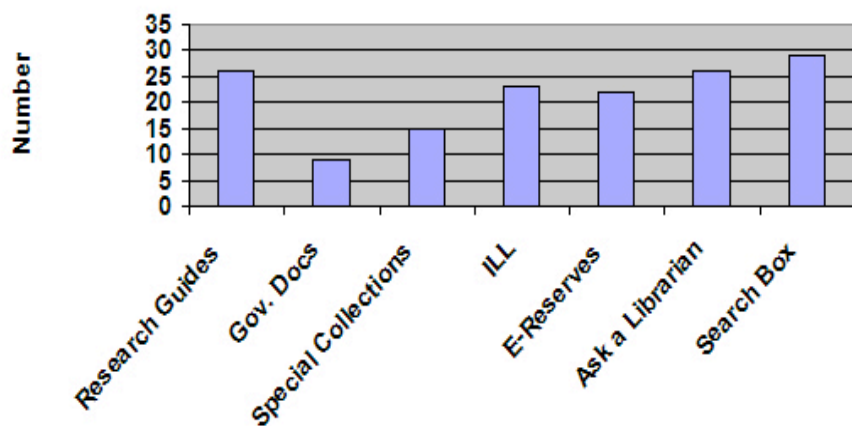


Heuristic Evaluation of Library Sites

- ▶ Used *US News and World Report's* list of universities
- ▶ Rated features, site architecture and general layout of library sites for top 40 universities
- ▶ Identified three design types to show users

Other Library Web Site Evaluation Summary

Link to	Number of Libraries	Percent	Links							
Research Guides	26	76%	Average Number	66.3	High	202	Low	16		
Gov. Docs	9	26%								
Special Collections	15	44%	To Lib Depts	1Link	20	More than 1	14			
ILL	23	68%	Lib Info Pages	Single Link	14	Many Links	14	Average for Many	7.8	
E-Reserves	22	65%								
Ask a Librarian	26	76%								
Search Box	29	85%								



Survey/Ballot of Page Designs

- ▶ Created three designs based on types from heuristic evaluation
- ▶ Asked users to rate designs and give opinion of each
- ▶ Held drawing for MP3 player as participation incentive



The Sheridan Libraries

3400 N. Charles St., Baltimore, MD 21218

1-800-315-1947

410-516-8335

[Home](#) | [Catalogs](#) | [E-Resources](#) | [Services](#) | [Research Help](#) | [Collections](#) | [More Info For](#) | [About Us](#)

Ask a Librarian

News

Space for Library related News.

Quick Links

[Forms](#)

[My Account](#)

[Departments](#)

[How To ...](#)

Search This Site

Catalogs

Search for books, journal titles and more

[JHU Library Catalog](#) | [WorldCat](#) | [Reserves](#) | [More Catalogs](#)

E-Resources

Search for articles, data and more

[A-Z List of Databases](#) | [Connecting Remotely](#) | [More](#)

Services

[Reserves](#) | [Borrowing](#) | [ILL](#) | [Computing](#) | [More](#)

Research Help

[Subject Guides](#) | [How To ...](#) | [Connecting Remotely](#) | [More](#)

Collections

[Special Collections](#) | [GPML](#) | [A/V](#) | [More](#)

More Info For:

[Faculty](#) | [Graduates](#) | [Undergrads](#) | [More](#)

Spotlight

Space to highlight MSEL collections and programs.

Current Hours

Friends of the Libraries

Space for Friends of the Libraries info.

Title search
 Catalog E-Resources

Ask a Librarian



- **Catalogs**
JHU Library Catalog, WorldCat, Reserves, More
- **E-Resources**
A-Z List of Databases, Connecting Remotely, More
- **Services**
Reserves, Borrowing, ILL, Computing, More
- **Research Help**
Subject Guides, How To . . . , Connecting Remotely, More
- **Collections**
Special Collections, GPML, AV, More
- **More Info For**
Faculty, Graduates, Undergrads, More



- Quick Links
- Forms
- My Account
- Departments
- How To . . .
- Friends of the Libraries
- About Us

Spotlight

Space to highlight MSEL collections and programs.

News

Space for Library related News.

Search This Site

For Library Staff Only



ABOUT US

QUICKLINKS

FORMS

MY ACCOUNT

DEPARTMENTS

HOW TO...

HOME



Ask a Librarian

NEWS

Space for Library related News.

SPOTLIGHT

Space to highlight MSEL collections or programs.

CATALOGS

Title

Search

[JHU Libraries Catalog](#) | [WorldCat](#) | [Reserves](#) | [More](#)

E-RESOURCES

Search for articles, data & more

Search

[A - Z List of Databases](#)

[Connecting Remotely](#)

[More](#)

SERVICES

[Reserves](#)

[Borrowing](#)

[ILL](#)

[Computing](#)

[More](#)

RESEARCH HELP

[Subject Guides](#)

[How To . . .](#)

[Connecting Remotely](#)

[More](#)

COLLECTIONS

[Special Collections](#)

[GPML](#)

[AV](#)

[More](#)

MORE INFO FOR

[Faculty](#)

[Graduates](#)

[Undergrads](#)

[More](#)

For Library Staff Only

Search this Site

Friends of the Libraries

Space for Friends of the Libraries info.

Lessons Learned

- ▶ Users wanted items organized by activities they perform
- ▶ Features and design trends identified in other library sites informed our own
- ▶ Preferred design emerged, based on nearly 1300 user submissions



LIBRARY SERVICES

ONLINE RESOURCES

CATALOGS

RESEARCH HELP

COLLECTIONS

INFO FOR

ASK A LIBRARIAN ?

HOW DO I ... ▶

FORMS ▶

MY ACCOUNT ▶

ABOUT US ▶

GIVING

How can I make a gift to the Library?

[Learn More...](#)

[Library Services](#)

Information and instructions to help you get what you need

[Renew books online](#) | [Find Reserves](#) | [Borrow from other libraries \(InterLibrary Loan\)](#) | [More](#)

[Online Resources](#)

Online Databases for articles, e-journals and other reference resources

[By subject](#) | [E-Journals](#) | [Newspapers](#) | [Statistics](#) | [More](#)

[Catalogs](#)

Search for books and journals

[JHU Libraries Catalog](#) | [WorldCat](#) | [Other Library Catalogs](#)

JHU Libraries Catalog

Search by:

[More Catalog Search Options](#)

[Research Help](#)

General and subject-specific help for your research

[Subject guides](#) | [Evaluating Internet Resources](#) | [Copyright Law: Using Information Legally](#) | [More](#)

[Collections](#)

Links to the various collections of the Sheridan Libraries

[Gov't Publications, Maps, Law](#) | [Rare Books, Archives, Manuscripts and JHU Theses/Dissertations](#) | [A/V, DVDs, Video, Microfilm](#) | [More](#)

[Info For](#)

Services and information especially for:

[Faculty](#) | [Grad students](#) | [Undergraduates](#) | [Alumni](#) | [Visitors](#)

August 2004 - present

Questions?





Andrea Bartelstein andi@jhu.edu

Michael Creech mcreech@jhu.edu

David Reynolds davidr@jhu.edu