

# Journal of Glaciology

<http://journals.cambridge.org/JOG>



Additional services for *Journal of Glaciology*:

Email alerts: [Click here](#)  
Subscriptions: [Click here](#)  
Commercial reprints: [Click here](#)  
Terms of use : [Click here](#)

---

## Interdecadal variability of degree-day factors on Vestari Hagafellsjökull (Langjökull, Iceland) and the importance of threshold air temperatures

TOM MATTHEWS and RICHARD HODGKINS

Journal of Glaciology / Volume 62 / Issue 232 / April 2016, pp 310 - 322  
DOI: 10.1017/jog.2016.21, Published online: 17 March 2016

Link to this article: [http://journals.cambridge.org/abstract\\_S0022143016000216](http://journals.cambridge.org/abstract_S0022143016000216)

### How to cite this article:

TOM MATTHEWS and RICHARD HODGKINS (2016). Interdecadal variability of degree-day factors on Vestari Hagafellsjökull (Langjökull, Iceland) and the importance of threshold air temperatures. Journal of Glaciology, 62, pp 310-322  
doi:10.1017/jog.2016.21

Request Permissions : [Click here](#)

# Interdecadal variability of degree-day factors on Vestari Hagafellsjökull (Langjökull, Iceland) and the importance of threshold air temperatures

TOM MATTHEWS,<sup>1</sup> RICHARD HODGKINS<sup>2</sup>

<sup>1</sup>*School of Natural Sciences and Psychology, Liverpool John Moores University, UK*

<sup>2</sup>*Department of Geography, Loughborough University, UK*

Correspondence: Tom Matthews <[t.r.matthews@ljmu.ac.uk](mailto:t.r.matthews@ljmu.ac.uk)>

**ABSTRACT.** The skill of degree-day glacier melt models is highly dependent on the choice of degree-day factor (DDF), which is often assumed to remain constant in time. Here we explore the validity of this assumption in a changing climate for two locations on Vestari Hagafellsjökull (1979–2012) using a surface energy-balance (SEB) approach that isolates the effect of changes in the prevailing weather on the DDF. At lower elevation, we observe stable DDF during the period of study; however, at higher elevation, DDF is noted to be more variable and a statistically-significant downward trend is observed. This is found to result from an inappropriate threshold air temperature ( $T_{\text{crit}}$ ) from which to initiate the positive-degree-day sum, and is removed by setting  $T_{\text{crit}}$  to  $-1.83^{\circ}\text{C}$ , rather than the usual value of  $0^{\circ}\text{C}$  used in degree-day melt models. The stationarity of DDF once  $T_{\text{crit}}$  is adjusted contradicts previous research and lends support to the use of constant DDF for projecting future glacier melt. Optimizing  $T_{\text{crit}}$  also improves the skill of melt simulations at our study sites. This research thus highlights the importance of  $T_{\text{crit}}$  for both melt model performance and the evaluation of DDF stationarity in a changing climate.

**KEYWORDS:** energy balance, glacier meteorology, ice and climate, ice-sheet mass balance, melt-surface

## 1. INTRODUCTION

The decline in mass of the Earth's glaciers has profound implications for society, involving sea-level rise (Gardner and others, 2013; Vaughan and others, 2013) and water security in hydrologically vulnerable catchments (Jansson and others, 2003; Vergara and others, 2007). In the context of climate change, there is consequently a pressing need to understand how glacier mass balance, and specifically melt, is coupled with climatic variability. For this purpose, models have been employed that adopt either a physical or empirical approach to simulating surface melting (Hock, 2005 provides a review). Physical models resolve the surface energy balance (SEB) using principles of heat conservation (e.g. Hock and Holmgren, 2005; Reijmer and Hock, 2008; Rye and others, 2010), whereas empirical methods seek statistical linkages between the melt rate and indices of meteorological variability (e.g. De Woul and Hock, 2005; Fealy and Sweeney, 2007; Rasmussen and others, 2007).

The greater physical realism of SEB approaches makes such techniques conceptually appealing, but data scarcity (both spatially and temporally) often prohibits their implementation. This is particularly true for studies that seek to simulate melt in a changing climate. For these applications, gridded output from general circulation models (GCMs) must be applied. Such data are spatially coarse, and do not resolve microclimatic variability in the topographically complex environments where glaciers reside. Hence, there is a mismatch of scale between GCM output and the information required to resolve the SEB (Machguth and others, 2009; Kotlarski and others, 2010; Mölg and Kaser, 2011).

Empirical techniques, on the other hand, are not necessarily so compromised by this scale problem. The most popular methods for simulating melt empirically utilize

the well-established correspondence between positive air temperatures and the melt rate (Braithwaite, 1981; Ohmura, 2001; Sicart and others, 2008). As a driving variable, air temperature varies slowly and predictably through space, and is therefore amenable to interpolation (Hock, 2003), meaning that temperature-driven models are better placed to utilize spatially coarse GCM output. This attribute has seen global-scale melt simulations performed using 'temperature-index' methods to quantify sea-level rise for a changing climate (e.g. Raper and Braithwaite, 2006; Radić and Hock, 2011; Marzeion and others, 2012; Radić and others, 2014).

A simple form of the temperature-index melt model can be written:

$$\sum_{i=1}^n M = MF_{\text{snow/ice}} \sum_{i=1}^n \max(0, T_i - T_{\text{crit}}). \quad (1)$$

Hence, melt ( $M$ , mm w.e.) during the  $n$ -time intervals is calculated by multiplying the concurrent sum of temperatures ( $T$ ,  $^{\circ}\text{C}$ ) above  $T_{\text{crit}}$  (the threshold temperature above which melting occurs), by the scaling factor  $MF$  (mm w.e.  $\text{t}^{-1}\text{C}^{-1}$ ). The snow/ice subscripts in Eqn (1) indicate that different values of  $MF$  are applicable, depending on the classification of the melting surface. When a daily time step is used as the time interval and  $T_{\text{crit}} = 0^{\circ}\text{C}$ , the sum of air temperatures above  $T_{\text{crit}}$  in Eqn (1) is termed the positive degree-day sum (PDD), and  $MF$  is known as the degree-day factor (DDF) (with units of  $\text{mm w.e. d}^{-1}\text{C}^{-1}$ ). The simplicity of Eqn (1) is a major attraction for melt simulations, and this appeal is made stronger given the good performance such models can achieve, sometimes exceeding the performance of data-demanding SEB models at the basin scale (Hock, 2005).

## 1.1. Degree-day factors

Consistent with Eqn (1), DDF is defined:

$$\text{DDF} = \frac{M}{\text{PDD}}. \quad (2)$$

That is, DDF is simply the total observed melt divided by the PDD accumulated during the same period. In interpreting Eqn (2), it is important to note that melt is a function of the SEB, which can be written:

$$Q = Q_H + Q_L + Q_{\text{SW}} + Q_{\text{LW}} + Q_R + Q_G, \quad (3)$$

where  $Q$  ( $\text{W m}^{-2}$ ) is the net balance of energy available, resulting in surface melting (if positive) or surface cooling (if negative). The subscripted  $Q$ s on the right-hand side of Eqn (3) denotes the  $k$  individual energy fluxes ( $\text{W m}^{-2}$ ). These are, respectively (from left to right): sensible heat, latent heat, net shortwave radiation, net longwave radiation, and the rain and subsurface heat fluxes.

Melt can be obtained from Eqn (3) by summing the contributions made by the  $k$  energy fluxes:

$$M = \sum_{j=1}^k M_j, \quad (4)$$

where melt quantities,  $M_j$ , from the individual energy fluxes,  $Q_j$ , are given by:

$$M_j = H(Q)Q_jL_f^{-1}\Delta t. \quad (5)$$

The Heaviside function,  $H(Q)$  adopts a value of 1 when the SEB ( $Q$ ) is positive, and zero otherwise. Conversion from  $\text{W m}^{-2}$  to  $\text{mm w.e.}$  is achieved through dividing by  $L_f$  (the latent heat of fusion,  $334 \text{ kJ kg}^{-1}$ ) and the number of seconds in the period over which melt is to be calculated,  $\Delta t$ .

Combining Eqns (2) and (4), DDF can be written:

$$\text{DDF} = \sum_{j=1}^k \frac{M_j}{\text{PDD}}. \quad (6)$$

So it can be seen that each of the energy components contributes to the value of DDF, and importantly, static DDF is contingent upon the summed ratio of melt contributed by the individual energy fluxes to PDD remaining constant.

## 1.2. DDFs and climate change

Although degree-day melt models are generally lauded for their good performance and minimal data requirements, the use of temporally static DDF has been acknowledged as questionable. The relationship between PDD and the melt rate (Eqn (6)) will vary as different components of the SEB rise and fall in their relative importance with changes in the prevailing weather. This renders constant DDF unrealistic (Lang and Braun, 1990; Braithwaite, 1995; Hock, 2003), and challenges the transferability of calibrated values in time and space (Macdougall and others, 2011). However, an issue that has received relatively little attention is the long-term stability of DDF. It is argued here that such focus is very much required. For example, Huss and others (2009) observed a systematic decline in DDF during the latter-half of the 20th century in the European Alps, while Gabi and others (2014)

also found evidence for decreasing 20<sup>th</sup>-century DDF from modelling the mass balance of Rhonegletscher (Switzerland). Conversely, Braithwaite and others (2013) used long-term mass-balance datasets to suggest that the temperature sensitivity of Alpine glaciers' had increased during the latter-part of the past half-century, while van den Broeke and others (2010) noted an increase in DDF during the brief 2003–07 period on the Greenland Ice Sheet.

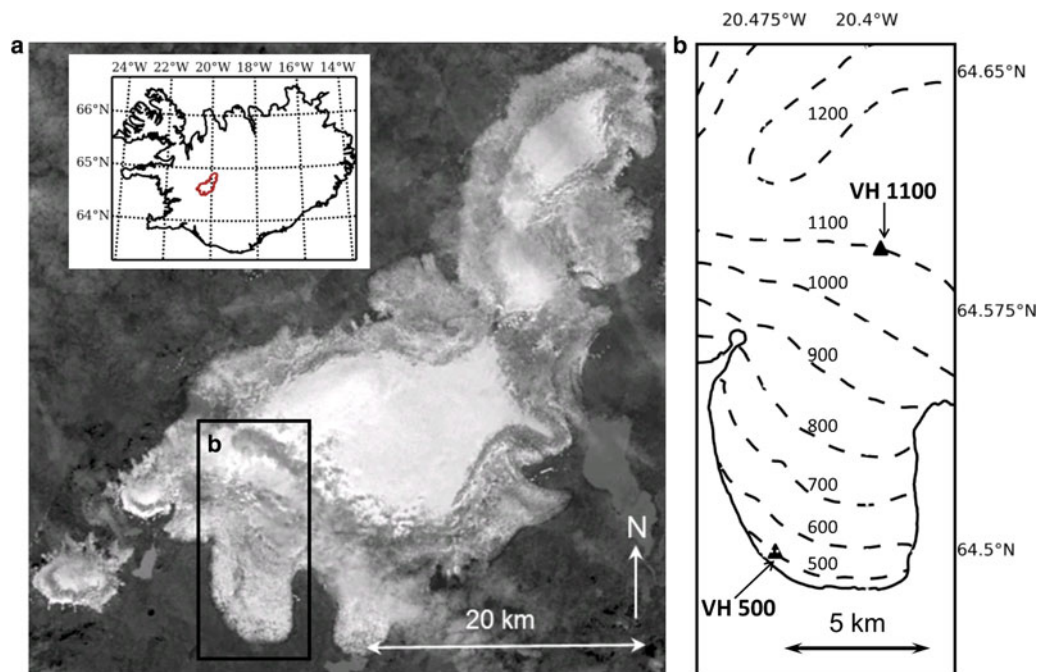
Changes in the relationship between the temperature and melt rate are evidently to the detriment of melt simulations in a changing climate. If DDF is non-stationary with respect to the climate, then studies that seek to project melt (e.g. Flowers and others, 2005; Radić and Hock, 2011; Marzeion and others, 2012), or those that attempt to hindcast past glacier balances using the degree-day model (e.g. Flowers and others, 2008; Engelhardt and others, 2013) will be compromised by this behaviour. Thus, there is much need for research that addresses DDF variability explicitly, in order to shed light on the extent to which the assumption of a temporally constant DDF is valid.

## 2. AIMS

Considering the above, our aim here is to contribute to knowledge on the long-term (interdecadal) variability of DDF. We address this by examining an SEB series from Vestari Hagafellsjökull (detailed below), which permits any observed changes in DDF to be attributed to, and explained by, changes in the surface energetics. Because the 34 year period explored here overlaps that studied by Huss and others (2009), we additionally seek to compare our results with those of this earlier study, which observed a decline in DDF since the mid-1970s. Our coincident, more detailed record from Iceland contributes a much-needed insight into the possible extent of this behaviour.

## 3. DATA AND METHODS

To analyse DDF variability we used the 34 year SEB record presented by Matthews and others (2014a: they term this record 'REANH' in that study). Full details of how this dataset was produced are provided in the reference, so we only recap the main points here. SEB series were generated for two locations on Vestari Hagafellsjökull (an outlet of the Langjökull ice cap: Fig. 1) where Automatic Weather Stations (AWSs), maintained by the Institute of Earth Sciences (University of Iceland), are located. Situated at 500 and 1100 m, these AWSs are hereafter referred to as VH 500 and VH 1100, respectively. Further details of the meteorological campaign on Vestari Hagafellsjökull can be found in Guðmundsson and others (2009) and Matthews and others (2014b). SEB series were produced for these locations for June–August (JJA) 1979–2012 by using the  $0.75^\circ \times 0.75^\circ$  daily fields from the ERA-Interim reanalysis archive (Dee and others, 2011) to force a physically based model. Such a long period of simulation permits low-frequency changes to the SEB to be assessed; in this instance allowing exploration of DDF stationarity. However, the reanalysis data do not capture the glacier microclimate and so must be downscaled before SEB modelling. Matthews and others (2014a) achieved this by implementing empirical quantile mapping to bias correct the incident radiative fluxes, air temperature, vapour pressure and wind speed relative to AWS reference series available for JJA 2001–2007 and 2001–



**Fig. 1.** Location of study sites. (a) Shows Langjökull in a SPOT satellite image (a subsection from image GES 08-024, acquired 19th August, 2004), with map inset indicating Langjökull's position within Iceland. (b) Shows the position of the two AWSs, VH 500 and VH 1100 on Vestari Hagafellsjökull. Note the position of (b) is indicated on (a).

2009 at VH 500 and VH 1100, respectively. As these bias correction functions are temporally invariant, their use assumes that the relationship between the local (AWS) and large-scale (reanalysis grid-point) climate does not change through time. This carries the implicit assumption that glacier hypsometry is temporally invariant. For example, changing elevation (e.g. from glacier thinning) would adiabatically modify the thermal and moisture properties of the local microclimate and could also impact insolation through changing shading patterns or slope. This complexity was neglected by Matthews and others (2014a). A summary of the resulting downscaled climate at our study sites is provided in Table 1.

The SEB was calculated at daily resolution from the bias-corrected reanalysis data by summing the sensible, latent, shortwave and longwave heat fluxes. Details as to how the energy components were computed in the model can be obtained from Table 2 in Matthews and others (2014a). The surface roughness lengths for momentum provided in that reference (and taken from Guðmundsson and others (2009)) have been demonstrated as appropriate for our study sites by Matthews and others (2014b), who highlighted that, when driven with in situ AWS data, the SEB model produced cumulative ablation estimates in agreement with those measured by echo-sounders within ranges of instrumental uncertainty. Albedo for the 34 year SEB simulation was held constant at the average values observed at the respective locations during the period of AWS observation (see Table 1). The uncertainty in simulating the SEB with the bias-corrected reanalysis data, rather than the in situ AWS data, was evaluated by Matthews and others (2014a; Table 5) by comparing their 'REF' (driven by AWS data) and 'REANv' (driven by reanalysis data) SEB series, and was reported as RMSEs. The uncertainty in melt totals translates to  $\pm 2.66$  and  $5.28\%$  of mean annual melt at VH 500 and VH 1100, respectively.

**Table 1.** Average meteorology during the period 1979–2012

Variable	VH 500	VH 1100
Air temperature ( $^{\circ}\text{C}$ )	$4.73 \pm 1.37$	$1.26 \pm 1.64$
Positive degree-days (PDDs $\text{a}^{-1}$ : $^{\circ}\text{C}$ )	$435 \pm 46.1$	$138 \pm 39.9$
Relative humidity (%)	$82.5 \pm 5.47$	$92.7 \pm 6.25$
Wind speed ( $\text{m s}^{-1}$ )	$5.27 \pm 1.70$	$5.70 \pm 2.94$
Incident shortwave radiation ( $\text{W m}^{-2}$ )	$180 \pm 95.2$	$220 \pm 87.8$
Cloud cover <sup>a</sup> (fraction)	$0.58 \pm 0.20$	$0.48 \pm 0.18$
Incident longwave radiation ( $\text{W m}^{-2}$ )	$310 \pm 30.1$	$289 \pm 32.88$
Atmospheric emissivity <sup>b</sup> (fraction)	$0.92 \pm 0.08$	$0.90 \pm 0.09$
Albedo <sup>c</sup> (fraction)	0.1	0.6
Surface roughness <sup>d</sup> (mm)	10	2
Surface type	Ice (dirty)	Melting snow/firn

$\pm$  indicates 1 SD of daily means.

<sup>a</sup>Cloud cover is defined as the ratio of received to potential (top of atmosphere) incident shortwave radiation (calculated following Iqbal (1983)).

<sup>b</sup>Atmospheric emissivity is defined as the received incident longwave radiation divided by a blackbody radiator at the 2 m air temperature.

<sup>c</sup>Albedo is held constant during the hindcast and the values are prescribed based on averages measured at the AWSs during the JJA period 2001–07 (VH 500) and 2001–09 (VH 1100).

<sup>d</sup>Surface roughness is also held constant for the hindcast simulation.

The SEB was simulated for the 34 year period using the bias-corrected reanalysis data under the assumptions of invariant glacier-surface conditions (hypsometry, albedo, surface roughness) and surface temperatures of  $0^{\circ}\text{C}$ . The resulting SEB record therefore represents *potential* melt energy, rather than actual energy balances over the past 34 years. This setup facilitates an examination of how the relationship between air temperature and the SEB varies as a function of the prevailing weather, without complications that arise from variable glacier surface conditions.

The DDF series were derived at annual (JJA) resolution via Eqn (2) using this potential melt record and PDD obtained



**Table 2.** Contributions to the term  $dDDF/dt$  from the individual energy fluxes (see Eqn (6)) at VH 1100.  $se$ ,  $t$ , and  $p$ , respectively denote the standard error,  $t$ -statistic and associated  $p$ -value for the regression coefficients used to approximate the derivatives (Section 3)

Energy flux	$(d/dt)(M_j/PDDs)$ mm w.e. $d^{-1}^{\circ}C^{-1} a^{-1}$	$se$	$ t $	$p$
Sensible heat	−0.001	0.006	0.197	0.845
Latent heat	0.009	0.009	1.091	0.283
Shortwave heat	−0.232	0.060	3.848	0.001
Longwave heat	0.067	0.031	2.161	0.038

from the bias-corrected reanalysis series. The albedo and roughness lengths selected for the SEB simulation mean that DDF should be interpreted as representing dirty ice and melting snow/firn at VH 500 and VH 1100, respectively (Table 1 and Matthews and others (2014b)). This interpretation stays constant with time because the glacier surface is held constant throughout the hindcast. The uncertainty in DDF was estimated analogously to the uncertainty in SEB components, by calculating RMSEs between values derived from the ‘REF’ and ‘REANv’ series reported in Matthews and others (2014a). These uncertainties in DDF were not actually reported by Matthews and others (2014a), but are given here as  $\pm 0.65$  and  $1.39$  mm w.e.  $^{\circ}C^{-1} d^{-1}$  at VH 500 and VH 1100, respectively. Note that all reference to meteorological data and the SEB hereafter refers to the bias-corrected reanalysis and potential melt energy series, respectively. For clarity, we highlight that the 34 year potential melt record is referred to simply as ‘melt’ hereafter. Thus, note that the cross-validation procedure (described below) uses the modelled (potential) melt series as its reference.

To explain DDF variability through time, we analysed the role of the  $k$  individual energy fluxes in contributing to this behaviour, using (from Eqn (6)):

$$\frac{dDDF}{dt} = \sum_{j=1}^k \frac{dM_j}{dt} \frac{1}{PDD} \quad (7)$$

Hence, any trend in DDF with respect to time ( $T$ ), can be attributed to individual trends in the fraction  $M_j/PDD$ . To evaluate Eqn (7) we used regression: the slope term is a linear approximation of the derivatives.

The consequences of variability in DDF for melt simulations were assessed with a cross-validation procedure. Values for DDF were calibrated for each year in turn (using melt and  $PDD$  according to Eqn (2)) and the remainder of the melt series was then simulated using these DDF estimates and the respective  $PDD$  accumulated during each year. Errors in the cross validation were evaluated through comparison with the melt series for each location at annual resolution. Thus, DDF for both locations was calculated for 34 times, and for each iteration the remaining 33 years’ melt was simulated and RMSE calculated. This procedure therefore quantifies the effects of variable DDF (resulting from changes in the prevailing weather only) on melt simulation error.

Where statistical significance is reported, we used a two-tailed  $t$ -test and a threshold  $p$ -value of 0.05 to indicate a ‘significant’ result. While the majority of the analysis presented here assesses DDF using melt and  $PDD$  accumulated at annual resolution, we also explore the daily SEB and temperature series to help shed light on the physical processes driving DDF variability (Section 4.3).

## 4. RESULTS

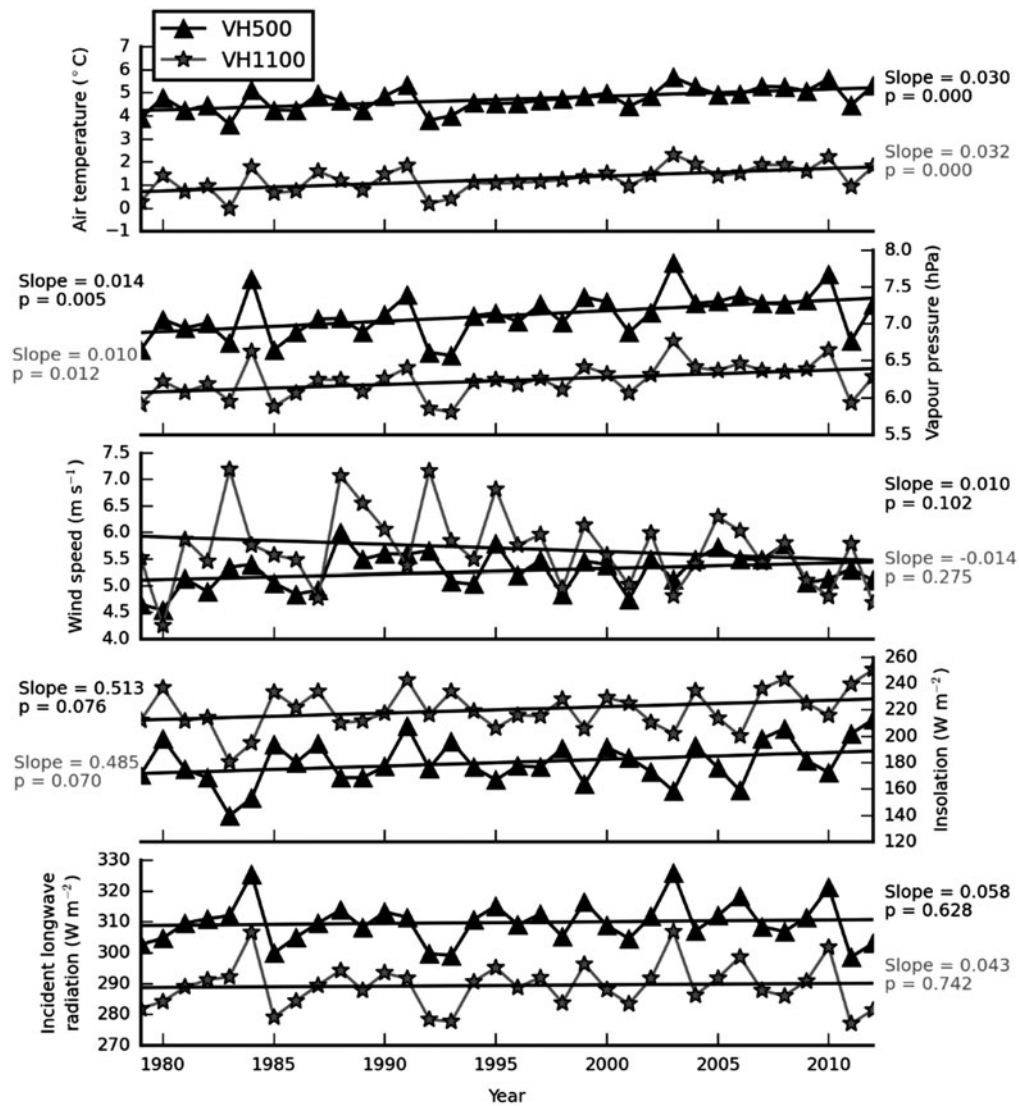
### 4.1. The SEB and DDFs

Figures 2 and 3 illustrate the meteorological and SEB series over the 1979–2012 period. Note that the SEB series displayed were also summarized by Matthews and others (2014a). The most significant trends for both locations were in air temperature and vapour pressure over the 1979–2012 period, which resulted in significant increases in the turbulent heat fluxes. Insolation displayed slightly weaker upward trends, which, because albedo is invariant, translated to similar increases in the net shortwave heat flux at both sites. Wind speed and incident longwave radiation remained essentially unchanged over the period assessed, and the latter is consistent with the lack of a trend in the net longwave heat flux at either location.

The DDF series for VH 500 and VH 1100 are illustrated in Figure 4. The mean of the 34 annual values for DDF is somewhat high at both locations ( $13.3 \pm 0.49$  and  $14.5 \pm 2.47$  mm w.e.  $^{\circ}C^{-1} d^{-1}$ , at VH 500 and VH 1100 respectively, where uncertainty  $= \pm 1$  standard deviation (SD)) when compared with values reported in the literature (e.g. Braithwaite and Zhang, 2000; Hock, 2003), but these values are in reasonable agreement with those reported by Hodgkins and others (2012), who derived DDF from AWS air temperatures and coincident measurements of surface elevation change detected by acoustic sounders during the summer of 2003 (mean DDF at 490 m =  $11.8 \pm 3.5$  mm w.e.  $^{\circ}C^{-1} d^{-1}$ ; mean DDF at 1100 m =  $12.8 \pm 4.5$  mm w.e.  $^{\circ}C^{-1} d^{-1}$ , in which uncertainty ranges indicate  $\pm 1$  SD of daily values). Somewhat high mean DDF at VH 500 is perhaps unsurprising given the relatively low albedo found here (0.1), which reflects the presence of dirty ice due to wind-blown sand/dirt (Guðmundsson and others, 2009). While mean DDF at VH 1100 appears large, it should be noted that this reflects a melting snow/firn surface, and comparisons with existing studies are challenged by the fact that values of DDF are typically not reported along with snowpack state (dry/wet).

### 4.2. Non-stationarity of DDFs

Examining DDF evolution through time, it is evident that inter-annual variability at VH 1100 is considerably greater than at the lower-elevation station. The SDs of the series in Figure 4 are 0.49 and 2.47 mm w.e.  $d^{-1}^{\circ}C^{-1}$  at VH 500 and VH 1100, respectively; hence, variability of DDF is more than five times greater at the higher-elevation site during this period. Close examination of Figure 4, does, however, indicate that DDF variance is decreasing at this location. The pronounced variability of DDF observed at VH 1100 means that factors calibrated on individual years do not transfer well for



**Fig. 2.** The meteorological variables at the respective sites for the period 1979–2012. Best fit lines from a linear regression are plotted as solid lines, and the magnitude/significance of the respective slope parameters are indicated adjacent to the appropriate panel. Note that the colour of the text indicates which series (VH 500 = black; VH 1100 = grey) the slope parameters relate to.

melt simulation in other years. Applying the cross-validation procedure resulted in RMSEs up to 70% of the mean annual melt at this location. This largest error was encountered when DDF from 1983 ( $22.51 \text{ mm w.e. d}^{-1}\text{°C}^{-1}$ ) was used to simulate melt in the remaining 33 years. Errors of this magnitude caution against transferring values of DDF between years at this location.

Trends in DDF during the period studied differ in magnitude between elevations. The trend at VH 500 ( $-0.86 \pm 0.63\% \text{ decade}^{-1}$ , in which uncertainty is the standard error of the slope coefficient when DDF is regressed with respect to year) is not significantly different from zero, whereas at VH 1100 a significant decline in DDF of  $-10.8 \pm 2.3\% \text{ decade}^{-1}$  is apparent. This figure is in reasonable accord with the  $-7\% \text{ decade}^{-1}$  reported by Huss and others (2009). Contributions to the term  $d\text{DDF}/dt$  from the individual energy sources at VH 1100 are given in Table 2. It is evident that the largest contributor to the left-hand side of Eqn (7) is made by the net shortwave radiation, as the fraction  $M_j/\text{PDD}$  decreased at a rate of  $-0.23 \text{ mm w.e. d}^{-1}\text{°C}^{-1} \text{ a}^{-1}$  during the 34 year period studied. This decline more than offset the modest, positive contributions from the longwave and latent heat fluxes.

The reduction in DDF at VH 1100 is coincident with a rise in air temperatures at this location. Indeed, if DDF is plotted against PDD, a very clear relationship emerges (Fig. 5). It is this dependence on air temperature which explains the decline in DDF observed during the 34 year record. The cause of such behaviour can be explained by following Braithwaite (1995), and writing melt as a linear function of PDD:

$$M_{jy} = \beta_j \text{PDD}_y + \alpha_j + \varepsilon_{jy}, \quad (8)$$

in which melt ( $M$ ) contributed by the  $j$ th SEB component in year  $y$  is calculated by multiplying the factor of proportionality,  $\beta_j$ , by PDD accumulated in the same year, with constant ( $\alpha_j$ ), and error term ( $\varepsilon_{jy}$ ) added. From this, DDF for each year can be written (recalling Eqns (2) and (6)):

$$\text{DDF}_y = \sum_{j=1}^k \beta_j + \frac{\alpha_j}{\text{PDD}_y} + \frac{\varepsilon_{jy}}{\text{PDD}_y}. \quad (9)$$

Assuming that the error has a conditional mean of zero, DDF can be approximated well with the last term on the

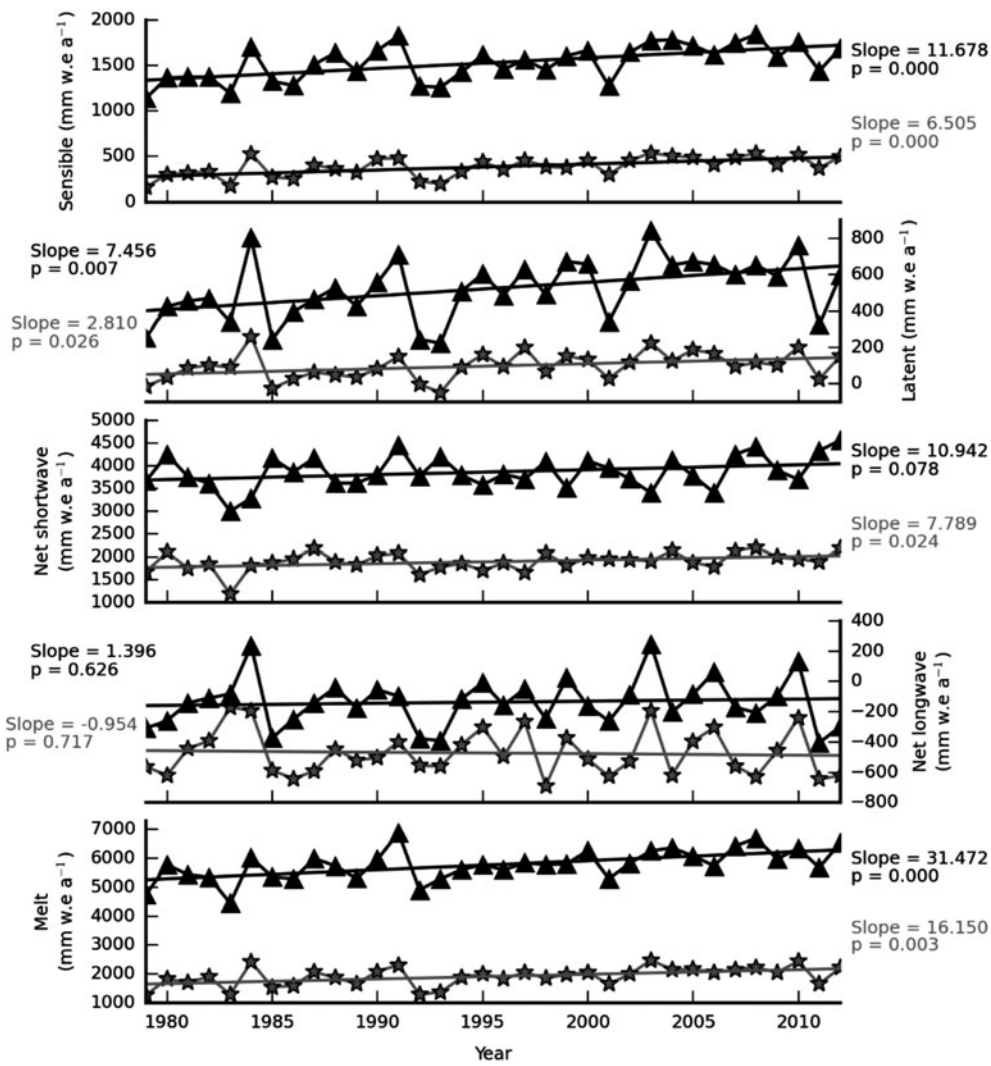


Fig. 3. The SEB components at the respective sites for the period 1979–2012. The format of this figure is the same as Figure 2.

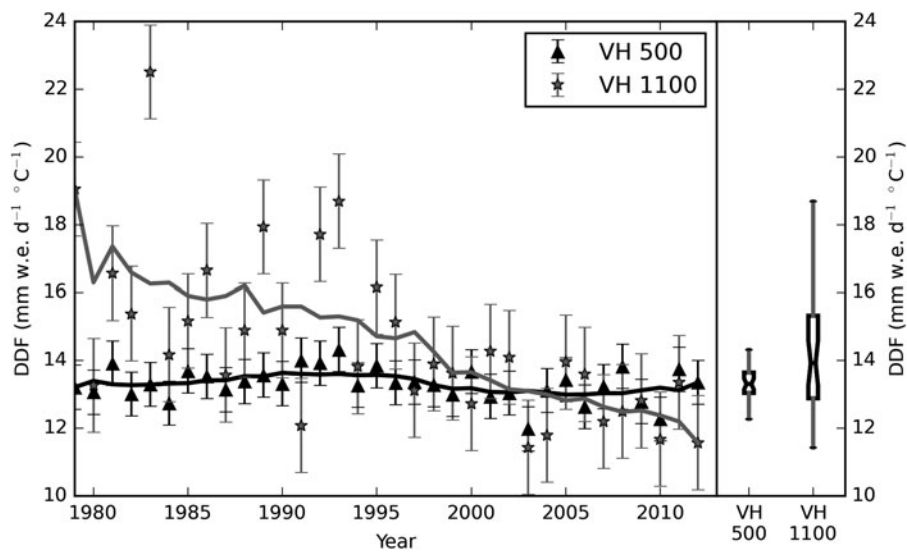
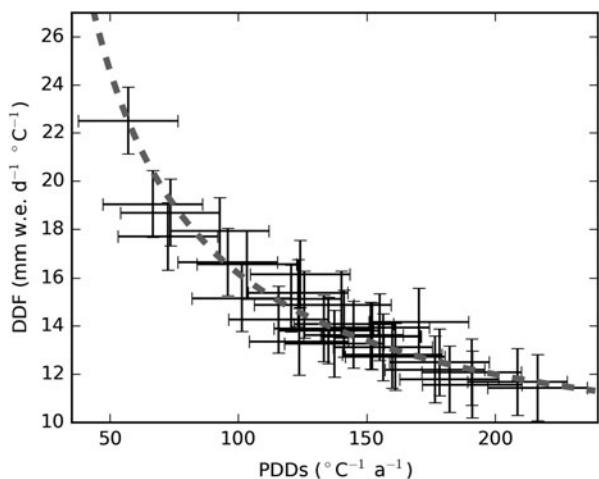


Fig. 4. (a) DDF evolution over the 1979–2012 period. Vertical bars indicate uncertainty as described in Section 3. The solid lines provide an 11 year, centred moving average to highlight low-frequency variability. End-points are smoothed with the maximum odd-length window possible. (b) Box plots of DDF. The notches indicate the respective medians, while the boxes span the interquartile range (IQR); the whiskers extend to the minimum/maximum values within  $1.5 \times \text{IQR}$  of the box limits.





**Fig. 5.** The relationship between DDF and PDD at VH 1100. The reference line is given by  $\sum_{j=1}^k \beta_j + (\alpha_j/PDD_{s_y})$ . Vertical error bars represent uncertainty in DDF, while horizontal error bars give uncertainty in PDD.

right-hand side omitted from Eqn (9): it is this function which forms the reference line in Figure 5. Importantly, it then follows from Eqn (9) that if the sum of all  $\alpha_j$  is non-zero, DDF will be non-stationary with respect to PDD. The derivative is given by:

$$\frac{d \text{DDF}}{d \text{PDD}} = \sum_{j=1}^k -\alpha_j \text{PDD}^{-2}, \quad (10)$$

and the term  $d \text{DDF}/d \text{PDD}$  will approach zero asymptotically as PDD increases.

Slope ( $\beta_j$ ) and constant ( $\alpha_j$ ) terms were obtained for VH 500 and VH 1100 using linear regression (Table 3; Fig. 6). At both sites, the sum of all  $\alpha_j$  is positive, meaning that, according to Eqn (9), DDF should be expected to decline as PDD increases (because the term  $\alpha_j/PDD_y$  becomes smaller). Equation (10) then indicates that the rate at which this decline occurs should be faster where air temperatures are lower (due to the term  $\text{PDD}^{-2}$ ). Importantly it is this relation that explains why the observed downward trend in DDF is much steeper at VH 1100. This location is appreciably cooler, and hence typically has much smaller PDD than VH 500 (less than one-third; Table 1). According to Eqn (10), this translates to a derivative of the DDF with respect to PDD more than 9 times larger than at VH 500, even if both locations were to have identical values of summed  $\alpha_j$ . It is therefore evident that the presence of non-zero  $\alpha$  is of more importance for degree-day melt simulations in environments characterized by lower temperatures.

Physically, the  $\alpha_j$  terms represent the contribution to melting of the respective energy fluxes when PDDs are zero. Examining the individual values obtained for both VH 500 and VH 1100 yields results that are physically plausible. Only the net shortwave heat flux has intercept terms that are significantly greater than zero. The large, positive  $\alpha_j$  for net shortwave radiation is to be expected, as this flux is independent of air temperature. If this energy term is sufficient to offset the cooling of the temperature-dependent fluxes, melt may persist at 0°C (and below). Note that it is because  $\alpha_j$  is large for net shortwave radiation, that this energy flux

contributes so heavily to the term  $d \text{DDF}/dt$  at VH 1100 (see Table 2; (10)).

### 4.3. Avoiding non-stationary DDFs

The analyses so far have demonstrated that DDF will only be stationary with respect to PDD if melting does not persist when PDD is zero. Where this condition is not satisfied, the sensitivity of melt to changes in air temperature (i.e. the  $\beta$  parameter) will be estimated wrongly if DDF is prescribed according to Eqn (2).

From the above, it follows that the undesirable non-stationarity of DDF may be corrected by adjusting the critical air temperature ( $T_{\text{crit}}$ ), beyond which melting occurs (i.e. the zero coordinate from which to calculate the PDD sum). A judicious choice would result in a zero  $\alpha$  term and ensure DDF and  $\beta$  are equivalent. To explore the extent to which varying  $T_{\text{crit}}$  improves the degree-day model at VH 1100 for simulating melt, the same cross-validation procedure described previously was employed. For this experiment, however, it was run repeatedly, and at each iteration, a different value of  $T_{\text{crit}}$  was used to calculate PDD and DDF. Specifically,  $T_{\text{crit}}$  was incremented in steps of 0.01°C over the range  $-5$  to 1°C, and for every value of  $T_{\text{crit}}$ , the average RMSE between simulated and observed melt for the 34 year series was calculated. A low error indicates stable DDF exhibiting little interannual variability.

Figures 7a and b demonstrate vividly the benefit of lowering the threshold air temperature at VH 1100. The optimum  $T_{\text{crit}}$  is found to be  $-1.83^\circ\text{C}$ . At this value, the average RMSE is reduced by  $\sim 70\%$  relative to the usual choice of  $0^\circ\text{C}$ . For completeness, the results from applying the cross-validation procedure at VH 500 are also displayed in Figure 7b. DDF is considerably less sensitive to the choice of threshold air temperature employed at this location (due to the higher temperatures found here; Eqn (10)) but a slight reduction in simulation error is still recorded (average RMSE is reduced by  $\sim 12\%$ ) if  $T_{\text{crit}}$  is adjusted to the optimum value ( $-1.03^\circ\text{C}$ ).

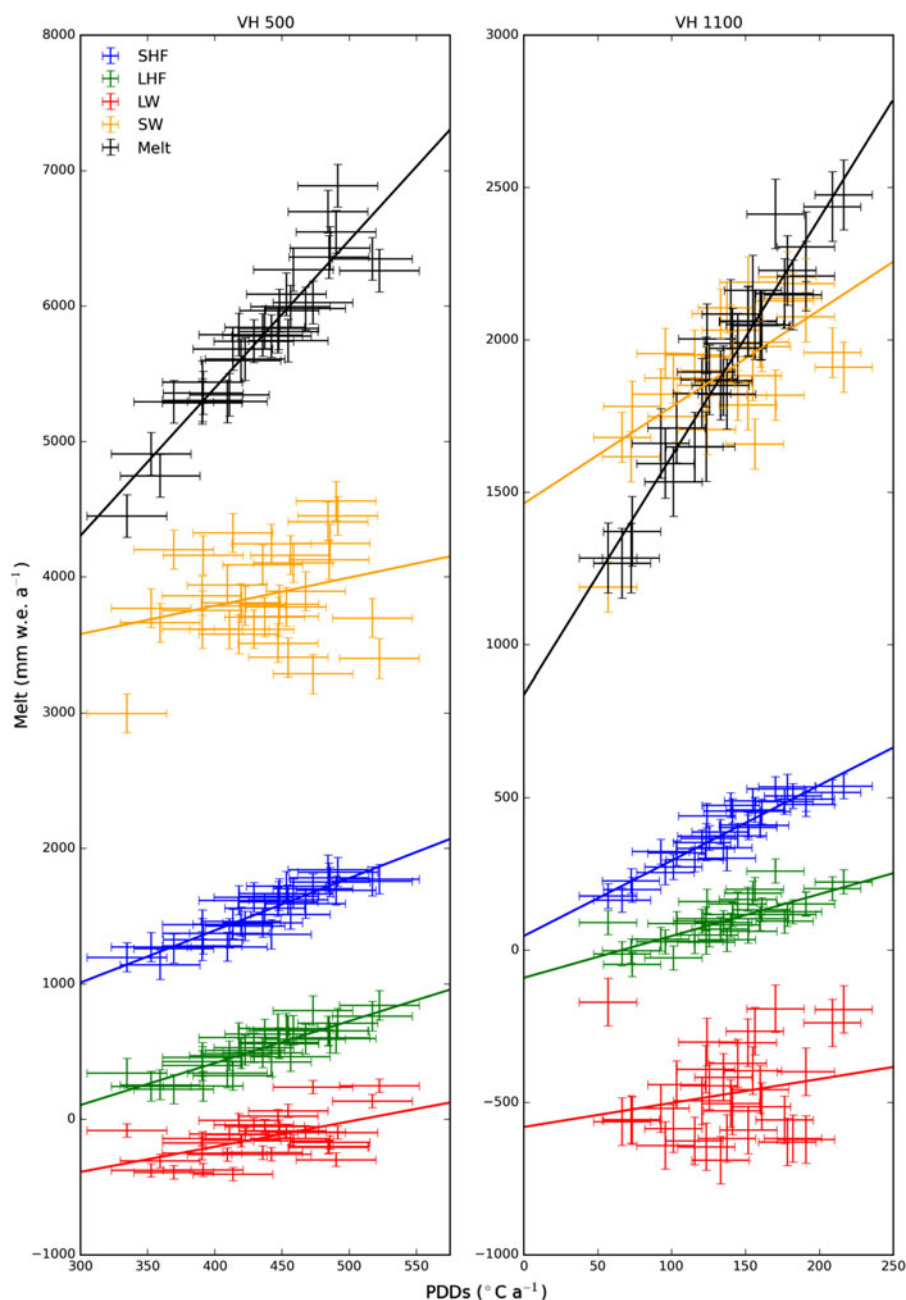
Temperatures below  $0^\circ\text{C}$  are very rare at VH 500 (occur on  $<1\%$  of days), but more common at VH 1100 (occur on  $\sim 17\%$  of days), which permits analysis of the SEB around the freezing point at this location, thus facilitating further exploration of the results shown in Figures 7a and b. We did this by examining the daily melt and temperature record to assess the probability of melting as a function of air temperature, which was pursued by using a sliding window, incremented in steps of  $0.25^\circ\text{C}$ , to assess the frequency of melting for air temperatures  $\pm 0.5^\circ\text{C}$  of the window centre (Fig. 7c). To estimate the sampling distribution we conducted a bootstrap, by repeating the sliding-window analysis 100 times. For each realization 25% of the dataset was selected at random and the probabilities of melting were assessed. Evidently melting is common at  $0^\circ\text{C}$  ( $91.27 \pm 2.53\%$ ; where uncertainty is 1 SD of melt probabilities calculated across the bootstrap realizations), but much less so at  $-1.83^\circ\text{C}$  ( $11.75 \pm 6.23\%$ ). Thus, at the optimum  $T_{\text{crit}}$  determined from the cross-validation procedure, melting is indeed rare. This means that, when calculating PDD from this threshold, a regression of annual (JJA) melt upon concurrent PDD yields an intercept very close to zero (slope =  $6.50 \pm 0.32 \text{ mm w.e. a}^{-1}\text{C}^{-1}$ ; intercept =  $22.88 \pm 95.48 \text{ mm w.e. a}^{-1}$ , in which uncertainty is given as the standard error of the fitted coefficients). PDD is also higher when this lower threshold air temperature is used, and these factors combined means that DDF



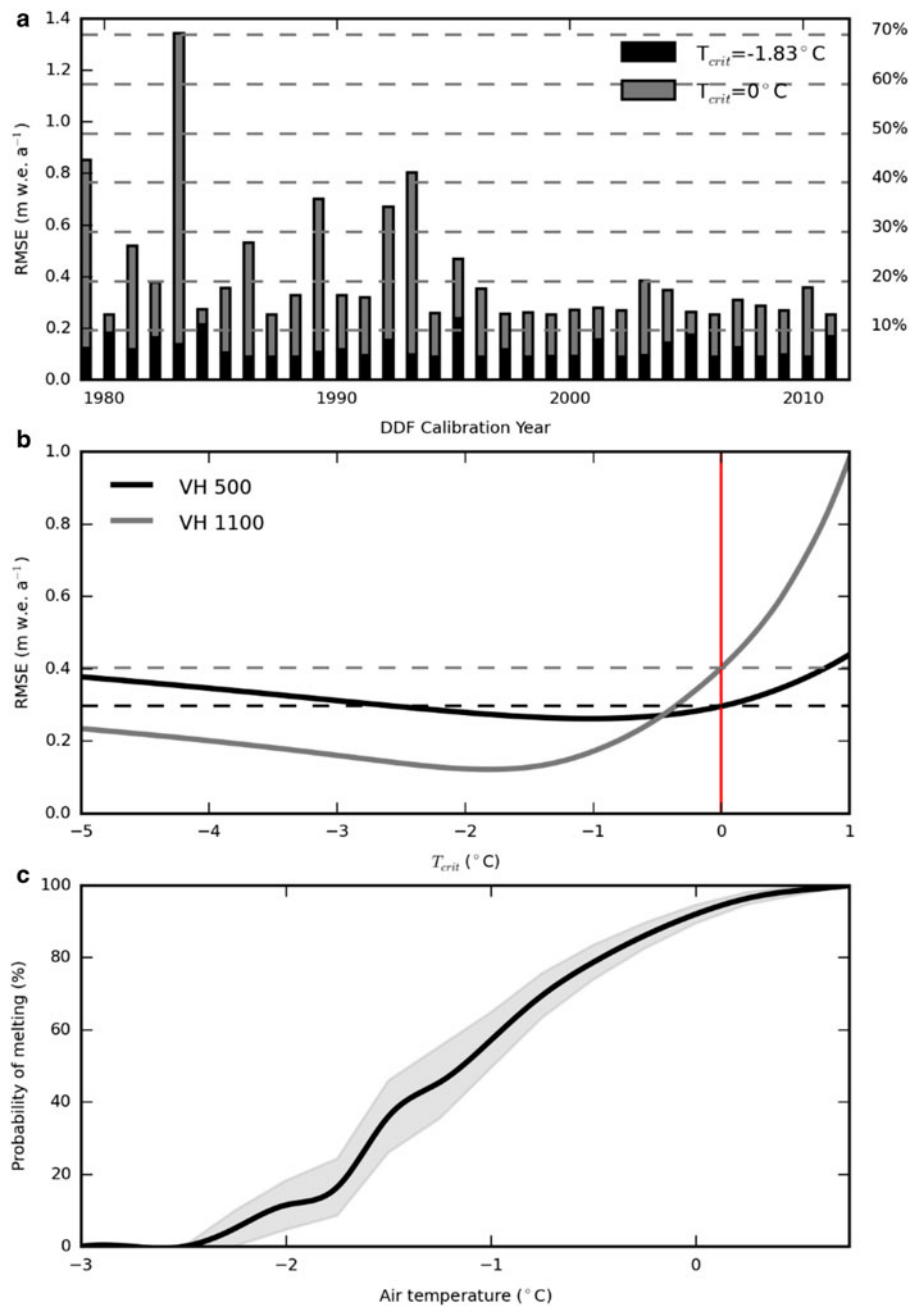
**Table 3.** Results of regression performed on each of the energy fluxes with respect to PDD

$M_j$	$\beta_j$		$\alpha_j$	
	mm w.e. $a^{-1}C^{-1}$		mm w.e. $a^{-1}$	
	VH 500	VH 1100	VH 500	VH 1100
Sensible heat	3.85 (0.32; 0.00)	2.47 (0.18; 0.00)	-147.04 (142.07; 0.31)	46.14 (25.96; 0.08)
Latent heat	3.10 (0.31; 0.00)	1.37 (0.21; 0.00)	-824.34 (137.58; 0.00)	-91.20 (30.57; 0.01)
Shortwave heat	2.08 (1.31; 0.12)	3.18 (0.68; 0.00)	2952.75 (574.93; 0.00)	1463.07 (97.43; 0.00)
Longwave heat	1.86 (0.52; 0.00)	0.79 (0.64; 0.22)	-946.81 (228.01; 0.00)	-580.72 (90.88; 0.00)
Melt	10.90 (0.75; 0.00)	7.81 (0.41; 0.00)	1034.56 (328.69; 0.00)	837.30 (58.31; 0.00)

$\beta$  is the slope and  $\alpha$  is the intercept. The values in brackets indicate the standard error of the regression coefficient and its associated  $p$ -value, respectively.



**Fig. 6.** Results from regressing the energy fluxes with respect to PDD at both elevations. The coefficients for the resulting lines are provided in Table 3. Vertical and horizontal bars indicate uncertainty estimates for the variables on the y- and x-axes, respectively. Abbreviations in the legend are: SHF, sensible heat flux; LHF, latent heat flux; LW, net longwave radiation; SW, net shortwave radiation.

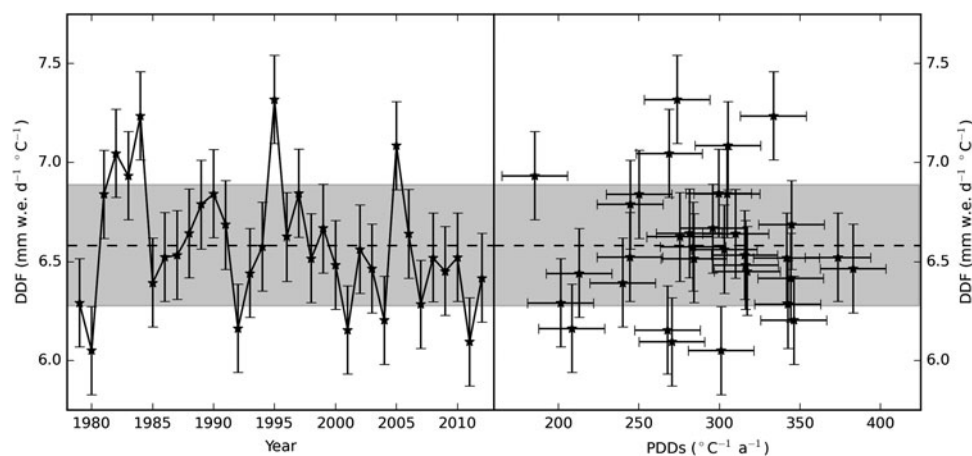


**Fig. 7.** (a) Comparison of RMSEs at VH 1100 when simulating melt with DDF calibrated using  $T_{crit}$  values of  $0^{\circ}\text{C}$  and with the optimum value determined for this location, determined to be  $-1.83^{\circ}\text{C}$ . Note that the RMSEs are overlain. (b) The results from repeatedly running the cross-validation procedure while varying  $T_{crit}$ . Dotted lines in this panel highlight the mean respective errors when  $T_{crit} = 0^{\circ}\text{C}$  is applied. (c) The probability of daily melting for the respective air temperatures. The solid black line and shaded area respectively provide the median and  $\pm 1$  SD across the 100 bootstrap realizations.

is essentially stationary with respect to PDD (see Eqn (10)). To illustrate this point, we plot DDF at VH 1100 as a function of both time and PDD in Figure 8, which highlights the absence of any trends once  $T_{crit} = -1.83^{\circ}\text{C}$  is adopted. The mean DDF ( $6.58 \pm 0.31 \text{ mm w.e. d}^{-1}\text{C}^{-1}$ ) is now within 2% of the regression slope parameter.

Using the optimized values of  $T_{crit}$ , the variability of DDF is reduced at both locations (Table 4). This change is relatively modest at VH 500, where the coefficient of variation (cv) decreases by  $\sim 11\%$ , but DDF was already relatively stable over the 34 year period at this location (Section 4.2). At VH 1100 the reduction is more prominent, as cv is reduced by  $\sim 78\%$ . In Table 4, we also show the sensitivities of DDF to the different energy-balance components calculated from

linear regression. At VH 500 sensitivities are somewhat low, irrespective of the value of  $T_{crit}$  adopted. The maximum absolute sensitivity found here is to the longwave heat flux ( $-2.39 \pm 0.48\% \sigma^{-1}$ , where  $\sigma$  denotes SD). Sensitivities at VH 1100 are much higher when  $T_{crit} = 0^{\circ}\text{C}$  is applied, with the largest absolute value witnessed for the sensible heat flux ( $-25.00 \pm 3.14\% \sigma^{-1}$ ), but all sensitivities reduce considerably when the lower value of  $T_{crit}$  is employed. The greatest sensitivity for  $T_{crit} = -1.83^{\circ}\text{C}$  is exhibited with respect to the latent heat flux ( $5.44 \pm 1.57\% \sigma^{-1}$ ). When the optimum threshold air temperature is applied, DDF at both locations is clearly rather stable with respect to changes in the SEB over the 34 year period investigated.



**Fig. 8.** (a) Variability in DDF over time at VH 1100 when calculated with  $T_{\text{crit}} = -1.83^\circ\text{C}$ . (b) Same as (a), but DDF is plotted against PDD. Vertical and horizontal lines indicate uncertainty in the variables on the respective axes (Section 3 and Fig. 5 caption for further details).

**Table 4.** Summary of DDF and SEB sensitivities before and after adjustment to the optimum  $T_{\text{crit}}$ . *cv* is the coefficient of variation (SD divided by the mean – multiplied by 100 for display), while the sensitivities to the SEB components, calculated as slope coefficients from linear regression, are reported as % per SD change in melt contribution from the respective SEB component

	VH 500 $T_{\text{crit}} = 0^\circ\text{C}$	VH 500 $T_{\text{crit}} = -1.03^\circ\text{C}$	VH 1100 $T_{\text{crit}} = 0^\circ\text{C}$	VH 1100 $T_{\text{crit}} = -1.83^\circ\text{C}$
<i>cv</i>	3.67	3.27	16.98	4.70
Sensible heat	-0.98 (0.62; 0.12)	0.74 (0.55; 0.19)	-25.00 (3.14; 0.00)	1.88 (1.46; 0.21)
Latent heat	-1.83 (0.55; 0.00)	-0.19 (0.57; 0.74)	-19.82 (5.64; 0.00)	5.44 (1.57; 0.00)
Shortwave heat	1.58 (0.58; 0.01)	2.17 (0.42; 0.00)	-22.83 (3.37; 0.00)	-3.05 (1.35; 0.03)
Longwave heat	-2.39 (0.48; 0.00)	-1.44 (0.51; 0.01)	1.29 (3.21; 0.69)	3.29 (0.68; 0.00)
Rad./turb.	1.75 (0.56; 0.00)	0.44 (0.56; 0.44)	2.33 (0.51; 0.00)	-0.37 (0.17; 0.03)
Shortwave/temp. dep.	1.93 (0.54; 0.00)	0.66 (0.56; 0.24)	-0.06 (0.03; 0.06)	-0.01 (0.01; 0.44)

'Rad.' and 'turb.' denote the radiative and turbulent SEB components, respectively, while 'temp. dep.' refers to the temperature-dependent heat fluxes (turbulent and longwave heat fluxes).

## 5. DISCUSSION

There are two particularly important points emerging from this research. The first of these is that the threshold air temperature is of significant importance for degree-day melt simulations, particularly at lower air temperatures. Incorrect specification of  $T_{\text{crit}}$  results in non-stationary DDF as air temperature changes, and melt simulations may be compromised as a result. Braithwaite (1995) observed similar results from modelling investigations in western Greenland, noting that high DDF was possible with low air temperatures if melting persisted at  $0^\circ\text{C}$ . This study also outlined the possibility that such high DDF was likely to decrease as air temperatures increased. Hence, the analyses presented here have supported this insight experimentally.

While it is generally assumed that the onset of melt occurs at  $0^\circ\text{C}$  (Hock, 2003), consideration of the SEB and the typical meteorological conditions encountered on glaciers suggests that melting may actually be possible over a wide range of air temperatures (Kuhn, 1987; Braithwaite, 1995). Our finding of subzero  $T_{\text{crit}}$  is supported by both van den Broeke and others (2010) and Senese and others (2014), who report threshold daily mean air temperatures of  $\sim -5^\circ\text{C}$  at the onset of melting. However, we emphasize that different values of  $T_{\text{crit}}$  should be expected between locations, as this parameter is determined by the respective microclimate.

The importance of the local climate conditions in determining the temperature at which melting initiates is highlighted if careful consideration is given to the surface energy fluxes around the melting point. At the onset of melting,  $Q = 0 \text{ W m}^{-2}$  and the glacier surface is at  $0^\circ\text{C}$  (Kuhn, 1987). Hence, to find  $T_{\text{crit}}$  is to find the air temperature,  $T$ , which satisfies this condition. For subzero  $T_{\text{crit}}$ , the only component that can act as an energy source is the shortwave heat flux. Ignoring energy transferred by rain, and assuming no ground heat flux and constant atmospheric pressure, the SEB at the onset of melting can be written as a function of the relevant meteorological variables:

$$Q_{\text{SW}} = Q_{\text{H}}(T, Ws) + Q_{\text{L}}(T, Ws, \text{RH}) + Q_{\text{LW}}(T, \varepsilon), \quad (11)$$

where  $Ws$  is the wind speed,  $\text{RH}$  is relative humidity, and  $\varepsilon$  is the atmosphere's thermal emissivity. The remaining symbols retain their meaning from Eqn (3). A detailed review of the form of the relations summarized in Eqn (11) can be found in Hock (2005); the purpose of its inclusion here is to highlight qualitatively the role of the different meteorological variables in determining  $T_{\text{crit}}$ . For constant wind speed ( $Ws$ ), humidity ( $\text{RH}$ ) and thermal emissivity ( $\varepsilon$ ), the value of  $T$  required to satisfy Eqn (11) decreases as  $Q_{\text{SW}}$  increases; for fixed  $Q_{\text{SW}}$ , lower  $T$  is required if  $\text{RH}$  and  $\varepsilon$  are higher, and if  $Ws$  is lower. It is therefore evident that variability of  $T_{\text{crit}}$

should indeed be anticipated, even across a single glacier, as changes in  $Q_{sw}$  (which itself depends on the incident short-wave flux and albedo),  $W_s$ , RH and  $\varepsilon$  will alter the temperature at which Eqn (11) is satisfied.

While the decision to neglect the ground heat flux ( $Q_G$ ) in Eqn (11) has some support for temperature Icelandic glaciers (Flowers and others, 2005), others have highlighted the potential importance of this flux, particularly for snow-covered sites that experience ablation season temperatures close to the melting point (Greuell and Oerlemans, 1986; Pellicciotti and others, 2009). Including  $Q_G$  in Eqn (11) would act to raise  $T_{crit}$  if all other terms were kept constant, as higher temperature-dependent heat fluxes would be required to offset any energy lost via conductive heat flow to the subsurface. Because we omitted  $Q_G$  in our SEB simulation, it is possible that we obtained optimized values of  $T_{crit}$  that are on the low side. This is perhaps more likely at VH 1100, which is colder and snow-covered (hence more likely to experience non-zero  $Q_G$ ). Our results may therefore provide a pessimistic view of the discrepancy between the appropriate values of  $T_{crit}$  determined for our study sites, and the 0°C often assumed.

It follows from the above that a constant  $T_{crit}$  is implausible in both space and time, which is perhaps problematic given the importance of this parameter noted in our study. In this regard, though, determining average values based on climatological considerations of the meteorological variables given in Eqn (11), may provide a solution that is more appealing than the usual zero-degree assumption encountered in degree-day melt modelling. While the development of such an approach is beyond the scope of this study, we note that techniques such as the coupling of remote sensing methods used to detect melt occurrence (e.g. Mote and others, 1993) with gridded climate data products (e.g. Dee and others, 2011), may yield insight in this respect.

The second important point raised by this research is the stationarity of DDF once  $T_{crit}$  had been adjusted appropriately. That is, despite the fact that air temperatures have changed appreciably during the 34 year period studied, the ratio between melt totals and air temperature remained approximately constant, and we detected a very low sensitivity of DDF to changes in the SEB. This is interesting because it is inconsistent with the results reported from the Swiss Alps by Huss and others (2009) who cautioned against applying values of DDF beyond their calibration period, due to a marked decline in DDF since the mid-1970s. The downward trend was observed to be coincident with rising air temperatures, and as a consequence it was cautioned that degree-day melt models may be unsuitable for projecting melt in a changing climate. Without insight into the SEB, Huss and others (2009) were not able to diagnose the cause of this non-stationarity. However, we suggest here that as the authors prescribed  $T_{crit}$  to be 0°C, it is possible that an incorrect specification of the threshold air temperature may explain the downward DDF trend; this would be consistent with the results from VH 1100.

Our results indicate temporal transferability of DDF values in the context of a changing climate, supporting studies that have utilized this assumption for Icelandic mass-balance modelling in particular (Flowers and others, 2005, 2008). However, the experimental framework our results are based on does not consider some important feedback processes in the SEB and our findings are site-specific. This may also contribute to the discrepancy between the results

reported here and those of Huss and others (2009). The 34 year SEB series we analysed was produced under the constraint of constant surface conditions (hypsometry, roughness and albedo: Section 3; Matthews and others (2014a)). In reality, however, the glacier surface state is dynamic and in fact influenced by the SEB. For example, cumulative melting has been shown to increase surface roughness lengths and decrease surface albedo (Brock and others, 2000, 2006). The latter process can be expected to increase the ratio between melt and PDD, and hence increase the DDF, while the former is likely to contribute in the same manner, depending on the sign and magnitude of the near-surface vapour pressure gradient. The possible impact of dynamic hypsometry on DDF is more challenging to estimate. Such changes have the potential to influence the local microclimate (and hence the SEB) in multiple ways: for example as glaciers retreat, insolation could be affected by changing shading patterns, while the thermodynamic properties of glacier boundary layers may change as the surface elevation is reduced and the cooling effect of glaciers is diminished (cf. Shea and Moore, 2010). In neglecting these sources of complexity, we provide a simplified view of DDF variability over the period 1979–2012, which only considers the influence of changes in the prevailing weather in driving SEB variability.

It should also be noted that our reconstruction of potential melt energy assumes that the bias correction applied to the reanalysis data remains suitable for the duration of the hindcast, but this assumption cannot be verified. Matthews and others (2014a) did however find that very little of the reanalysis data in the hindcast period lay beyond the bounds of the data used to calibrate the quantile-mapping adjustment they applied, which adds confidence to the bias correction. Moreover, as we use the ERA-Interim reanalysis – which only covers the recent observation-rich data period (1979 onward, Dee and others, 2011) – the quality of this dataset (in terms of representing the synoptic circulation) is likely to be high throughout the simulation period. Thus, we conclude that this source of uncertainty in our reconstructions of potential melt energy is likely to be small.

In summary, we highlight that our experimental framework does provide a simplified view of DDF variability. However, the physically consistent approach to the analysis has permitted a more-detailed view of interdecadal variability in this parameter variability than has been offered to date. This insight suggests that DDF at our study sites is relatively insensitive to the recent variations in potential melt energy that accompanied climate change.

## 6. CONCLUSIONS

A critical assumption invoked when applying the degree-day model to simulate interannual variability in melt is that DDF remains constant in time. Because records of the SEB or indeed contemporaneous measurements of surface melt and air temperature are seldom available over suitably long periods of time, it is often problematic to falsify this assumption experimentally. In this study, we have made a contribution in this regard by examining DDF variability over a 34 year period characterized by a changing climate.

We observed a significant downward trend of this model parameter at VH 1100, but this was found to be spurious and could be attributed to an incorrect specification of the air temperature from which to initialize the positive-degree-day



sum ( $T_{crit}$ ). Our results highlight that an inappropriate choice of this parameter has a larger effect on the non-stationarity of DDF in environments characterized by lower air temperatures, and it is for this reason that substantial errors in simulated melt were noted in a cross-validated melt simulation at VH 1100.

The spurious trend that we attributed to misspecification of  $T_{crit}$  is also troubling for studies that seek to investigate the validity of the assumption that DDF remains constant as the climate changes. Unless the role of  $T_{crit}$  is addressed explicitly, we conclude that misspecification of this parameter cannot be ruled out as an alternative explanation for apparent violations of this assumption. Indeed, once  $T_{crit}$  had been adjusted appropriately, we observed no trend in DDF at our locations during a 34 year period characterized by climate warming.

Given the importance of  $T_{crit}$  observed in this work, it is recommended that future research should attempt to constrain this parameter explicitly. Integrating such an approach into long-term studies of DDF variability on other glaciers worldwide will be an important contribution in further understanding the extent to which the assumption of constant DDF is valid in a changing climate.

## ACKNOWLEDGEMENTS

We acknowledge S. Guðmundsson, F. Pálsson and H. Björnsson (Institute of Earth Sciences, Reykjavik) for the use of AWS data from Vestari Hagafellsjökull. We also thank two anonymous reviewers whose comments improved this work substantially.

## REFERENCES

Braithwaite RJ (1981) On glacier energy balance, ablation and air temperature. *J. Glaciol.*, **27**(97), 381–391

Braithwaite RJ (1995) Positive degree-day factors for ablation on the Greenland ice sheet studied by energy balance modelling. *J. Glaciol.*, **41**(137), 153–160

Braithwaite RJ and Zhang Y (2000) Sensitivity of mass balance of five Swiss glaciers to temperature changes assessed by tuning a degree-day model. *J. Glaciol.*, **46**(152), 7–14 (doi: 10.3189/172756500781833511)

Braithwaite RJ, Raper SC and Candela R (2013) Recent changes (1991–2010) in glacier mass balance and air temperature in the European Alps. *Ann. Glaciol.*, **54**, 139–146 (doi: 10.3189/2013AoG63A285)

Brock BW, Willis IC and Sharp MJ (2000) Measurement and parameterization of albedo variations at Haut Glacier d’Arolla, Switzerland. *J. Glaciol.*, **46**(155), 675–688 (doi: 10.3189/172756500781832675)

Brock BW, Willis IC and Sharp MJ (2006) Measurement and parameterization of aerodynamic roughness length variations at Haut Glacier d’Arolla, Switzerland. *J. Glaciol.*, **52**(177), 281–297 (doi: 10.3189/172756506781828746)

Dee DP and 35 others (2011) The ERA-Interim reanalysis: configuration and performance of the data assimilation system. *Q. J. R. Meteorol. Soc.*, **137**(656), 553–597 (doi: 10.1002/qj.828)

De Woul M and Hock R (2005) Static mass-balance sensitivity of Arctic glaciers and ice caps using a degree-day approach. *Ann. Glaciol.*, **42**, 217–224 (doi: 10.3189/172756405781813096)

Engelhardt M, Schuler TV and Andreassen LM (2013) Glacier mass balance of Norway 1961–2010 calculated by a temperature-index model. *Ann. Glaciol.*, **54**, 32–40 (doi: 10.3189/2013AoG63A245)

Fealy R and Sweeney J (2007) Identification of frequency changes in synoptic circulation types and consequences for glacier mass

balance in Norway. *Norsk Geogr. Tidsskr.*, **61**(2), 76–91 (doi: 10.1080/00291950701374328)

Flowers GE, Marshall SJ, Björnsson H and Clarke GK (2005) Sensitivity of Vatnajökull ice cap hydrology and dynamics to climate warming over the next 2 centuries. *J. Geophys. Res.-Earth*, **110**(F2) (doi: 10.1029/2004JF000200)

Flowers GE and 5 others (2008) Holocene climate conditions and glacier variation in central Iceland from physical modelling and empirical evidence. *Quaternary Sci. Rev.*, **27**(7), 797–813 (doi: 10.1016/j.quascirev.2007.12.004)

Gabbi J, Carenzo M, Pellicciotti F, Bauder A and Funk M (2014) A comparison of empirical and physically based glacier surface melt models for long-term simulations of glacier response. *J. Glaciol.*, **60**(224), 1140–1154 (doi: 10.3189/2014JoG14J011)

Gardner AS and 15 others (2013) A reconciled estimate of glacier contributions to sea level rise: 2003 to 2009. *Science*, **340**(6134), 852–857 (doi: 10.1126/science.1234532)

Greuell W and Oerlemans J (1986) Sensitivity studies with a mass balance model including temperature profile calculations inside the glacier. *Zeitschrift für Gletscherkunde und Glazialgeologie*, **22**(2), 101–124

Guðmundsson S, Björnsson H, Pálsson F and Haraldsson HH (2009) Comparison of energy balance and degree-day models of summer ablation on the Langjökull ice cap, SW-Iceland. *Jökull*, **59**, 1–17

Hock R (2003) Temperature index melt modelling in mountain areas. *J. Hydrol.*, **282**(1), 104–115 (doi: 10.1016/S0022-1694(03)00257-9)

Hock R (2005) Glacier melt: a review of processes and their modeling. *Prog. Phys. Geogr.*, **29**(3), 362–391 (doi: 10.1191/0309133305pp453ra)

Hock R and Holmgren B (2005) A distributed surface energy balance model for complex topography and its application to Storglaciären, Sweden. *J. Glaciol.*, **51**(172), 25–36 (doi: 10.3189/172756505781829566)

Hodgkins R, Carr S, Pálsson F, Guðmundsson S and Björnsson H (2012) Sensitivity analysis of temperature-index melt simulations to near-surface lapse rates and degree-day factors at Vestari-Hagafellsjökull, Langjökull, Iceland. *Hydro. Process.*, **26**(24), 3736–3748 (doi: 10.1002/hyp.8458)

Huss M, Funk M and Ohmura A (2009) Strong Alpine glacier melt in the 1940s due to enhanced solar radiation. *Geophys. Res. Lett.*, **36**(23) (doi: 10.1029/2009GL040789)

Iqbal M (1983) *An introduction to solar radiation*, 1st edn. Academic Press, London

Jansson P, Hock R and Schneider T (2003) The concept of glacier storage: a review. *J. Hydrol.*, **282**(1), 116–129 (doi: 10.1016/S0022-1694(03)00258-0)

Kotlarski S, Jacob D, Podzun R and Paul F (2010) Representing glaciers in a regional climate model. *Clim. Dynam.*, **34**(1), 27–46 (doi: 00382-009-0685-6)

Kuhn M (1987) Micro-meteorological conditions for snow melt. *J. Glaciol.*, **33**(113), 263–272

Lang H and Braun L (1990) On the information content of air temperature in the context of snow melt estimation. In Molnar L (ed.) *Hydrology of mountainous areas* (Proceedings of the Strbske Pleso Symposium 1990), IAHS Publ. no. 190, 347–354 (<http://www.sciencedirect.com/science/article/pii/S0022169403002579>)

MacDougall AH, Wheler BA and Flowers GE (2011) A preliminary assessment of glacier melt-model parameter sensitivity and transferability in a dry subarctic environment. *Cryosphere*, **5**(4), 1011–1028 (doi: 10.5194/tc-5-1011-2011)

Machguth H, Paul F, Kotlarski S and Hoelzle M (2009) Calculating distributed glacier mass balance for the Swiss Alps from regional climate model output: a methodological description and interpretation of the results. *J. Geophys. Res.-Atmos.*, **114**(D19) (doi: 10.1029/2009JD011775)

Marzeion B, Jarosch AH and Hofer M (2012) Past and future sea-level change from the surface mass balance of glaciers. *The Cryosphere*, **6**(4), 1295–1322 (doi: 10.5194/tc-6-1295-2012)

- Matthews T, Hodgkins R, Gudmundsson S, Pálsson F and Björnsson H (2014a) Inter-decadal variability in potential glacier surface melt energy at Vestari Hagafellsjökull (Langjökull, Iceland) and the role of synoptic circulation. *Int. J. Climatol.*, **35**(10), 3041–3057 (doi: 10.1002/joc.4191)
- Matthews T and 6 others (2014b) Conditioning temperature-index model parameters on synoptic weather types for glacier melt simulations. *Hydrol. Process.*, **29**(6), 1027–1045 (doi: 10.1002/hyp.10217)
- Mölg T and Kaser G (2011) A new approach to resolving climate-cryosphere relations: downscaling climate dynamics to glacier-scale mass and energy balance without statistical scale linking. *J. Geophys. Res.-Atmos.*, **116**(D16) (doi: 10.1029/2011JD015669)
- Mote TL, Anderson MR, Kuivinen KC and Rowe CM (1993) Passive microwave-derived spatial and temporal variations of summer melt on the Greenland ice sheet. *Ann. Glaciol.*, **17**, 233–233
- Ohmura A (2001) Physical basis for the temperature-based melt-index method. *J. Appl. Meteorol.*, **40**(4), 753–761 (doi: 10.1175/1520-0450(2001)040<0753:PBFTTB>2.0.CO;2)
- Pellicciotti F, Carenzo M, Helbing J, Rimkus S and Burlando P (2009) On the role of subsurface heat conduction in glacier energy-balance modelling. *Ann. Glaciol.*, **50**(50), 16–24 (doi: 10.3189/172756409787769555)
- Radić V and Hock R (2011) Regionally differentiated contribution of mountain glaciers and ice caps to future sea-level rise. *Nat. Geosci.*, **4**(2), 91–94 (doi: 10.1038/ngeo1052)
- Radić V and 5 others (2014) Regional and global projections of twenty-first century glacier mass changes in response to climate scenarios from global climate models. *Clim. Dyn.*, **42**(1–2), 37–58 (doi: 10.1007/s00382-013-1719-7)
- Raper SC and Braithwaite RJ (2006) Low sea level rise projections from mountain glaciers and icecaps under global warming. *Nature*, **439**(7074), 311–31 (doi: 10.1038/nature04448)
- Rasmussen LA, Andreassen LM and Conway H (2007) Reconstruction of mass balance of glaciers in southern Norway back to 1948. *Ann. Glaciol.*, **46**, 255–260 (doi: 10.3189/172756407782871242)
- Reijmer CH and Hock R (2008) Internal accumulation on Storglaciären, Sweden, in a multi-layer snow model coupled to a distributed energy and mass balance model. *J. Glaciol.*, **54**(184), 61–72 (doi: 10.3189/002214308784409161)
- Rye CJ, Arnold NS, Willis IC and Kohler J (2010) Modeling the surface mass balance of a high Arctic glacier using the ERA-40 reanalysis. *J. Geophys. Res. Earth*, **115**(F2) (doi: 10.1029/2009JF001364)
- Senese A, Maugeri M, Vuillermoz E, Smiraglia C and Diolaiuti G (2014) Using daily air temperature thresholds to evaluate snow melting occurrence and amount on Alpine glaciers by T-index models: the case study of the Forni Glacier (Italy). *Cryosphere*, **8**(5), 1921–1933 (doi: 10.5194/tc-8-1921-2014)
- Shea JM and Moore RD (2010) Prediction of spatially distributed regional-scale fields of air temperature and vapor pressure over mountain glaciers. *J. Geophys. Res. Atmos.*, **115**(D23) (doi: 10.1029/2010JD014351)
- Sicart JE, Hock R and Six D (2008) Glacier melt, air temperature, and energy balance in different climates: the Bolivian Tropics, the French Alps, and northern Sweden. *J. Geophys. Res. Atmos.*, **113**(D24) (doi: 10.1029/2008JD010406)
- van den Broeke M, Bus C, Ettema J and Smeets P (2010) Temperature thresholds for degree-day modelling of Greenland ice sheet melt rates. *Geophys. Res. Lett.*, **37**(18) (doi: 10.1029/2010GL044123)
- Vaughan DG and 13 others (2013) Observations: cryosphere. In Stocker TF and 9 others (eds). *Climate change 2013: the physical science basis. Contribution of Working Group I to the Fifth Assessment Report of the Intergovernmental Panel on Climate Change* Cambridge University Press, Cambridge, UK and New York, NY, USA
- Vergara W and 7 others (2007) Economic impacts of rapid glacier retreat in the Andes. *Eos, Trans. Am. Geophys Union*, **88**(25), 261–264 (doi: 10.1029/2007EO25000)

MS received 25 March 2015 and accepted in revised form 17 October 2015; first published online 17 March 2016