

# THERMAL SIMULATION SOFTWARE OUTPUTS: A CONCEPTUAL DATA MODEL OF INFORMATION PRESENTATION FOR BUILDING DESIGN DECISION MAKING

Clarice Bleil de Souza<sup>1</sup>, Simon Tucker<sup>1</sup>

<sup>1</sup>Welsh School of Architecture, Cardiff University, Cardiff, Wales - UK  
King Edward VII Avenue, CF10 3NB  
[bleildesouzac@cardiff.ac.uk](mailto:bleildesouzac@cardiff.ac.uk)

Building simulation outputs are inherently complex and numerous. Extracting meaningful information from them requires knowledge which mainly resides only in the hands of experts. Initiatives to address this problem tend either to provide very constrained output data interfaces or leave it to the user to customize data organisation and query. This work proposes a conceptual data model from which meaningful dynamic thermal simulation information for building design decision making may be constructed and presented to the user. It describes how the model was generated and can become operational, with examples of its applications to practical problems. The paper therefore contains useful information for software developers to help in specifying and designing simulation outputs which better respond to building designers' needs.

Keywords: simulation outputs for decision making, simulation outputs for building design, simulation and building design

## 1. INTRODUCTION

The aim of this paper is *to describe a conceptual data model from which dynamic thermal simulation information for building design decision making may be generated*. Providing such information to the building designer is a challenge that has been addressed in the past by the design of new software and interface/outputs, mainly from an engineering or project management perspective. In this paper we follow an approach based on considering primarily the needs of the user. This focus on the user is inspired by the practice of Interaction Design (Rogers et al. 2011; Cooper et al. 2007) and represents a new approach toward the problem of enabling a wider range of design professionals to make use of simulation software in the design of low energy buildings.

The paper is a follow on to a previously published paper in this journal (Bleil de Souza and Tucker 2014) which proposed and described a framework within which thermal simulation post-processed information meaningful to building design decision making may be generated. The framework explored what information is relevant to designers and how it can be generated. It did not address in detail how to manage and use data representation and data display systems meaningful to design decision making. The current paper describes in detail a conceptual data model to address these issues. This conceptual model is a high-level description of the entity classes and the associations between pairs of these classes, which together order the data to effectively communicate simulation results to building designers. Conceptual data models are used in Computer Science to organise information prior to the development of database/database management systems. The framework and conceptual data model are developed by considering building designers as the ultimate simulation tool users either directly or indirectly when supported by consultants, and are therefore developed to fit the building designer's 'modus operandi'.

### 1.1. A summary of the framework

Extensive discussions about appropriate descriptions of the building designer's 'modus operandi' can be found in the building design literature<sup>1</sup>. One of the most famous descriptions is provided by Schon (1984, 1988 and 1991). According to Schon, designers solve problems by 'reflecting in action' through 'a conversation with the

---

<sup>1</sup> Schon 1988 and 1991 are classics with more examples presented in Lawson 1997, Rowe 1987 to cite a few.

materials of the situation'. This means designers gradually discover the problem while attempting to propose solutions to it. A key aspect of this process is that it necessarily involves experiments. These experiments can be of the following three types: (i) exploratory experiments, in which action is undertaken only to see what follows; (ii) move-testing experiments, used to assess moves depending on the changes produced and whether the designer likes the changes produced; and (iii) hypothesis-testing experiments, used to discriminate among competing alternatives generally not used to reach a final solution but to constantly reframe the problem through a new hypothesis to be tested.

These experiments are not controlled (not allowing phenomena to be isolated or variables to be separated). More importantly, *these experiments are generally used to transform the situation from 'what it is' to something the designer likes better* (Schon 1991). *This means the design process is a constant work in progress which only stops when designers decide this is the case* (Figure 1).

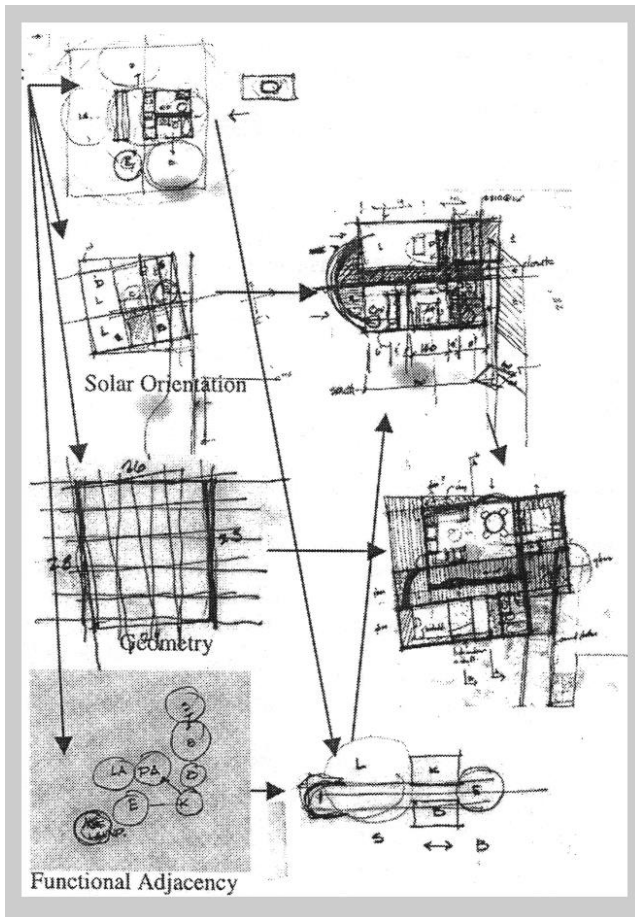


Figure 1 – A snapshot of a ‘reflection in action’ through ‘a conversation with the material of the situation’ (Akin 2001). Image from Elsevier.

Simulation outputs need to be ‘in tune’ with these experiments. They need to provide answers to the different ‘what if’ situations generated within these experiments. The framework extracted from these ‘what if’ situations questions about performance. It also proposed a structure to set up specific questions about performance, so that these questions can be embedded in sequences of moves directed by reflection in action (Figure 2).

## Reflecting *in action*...

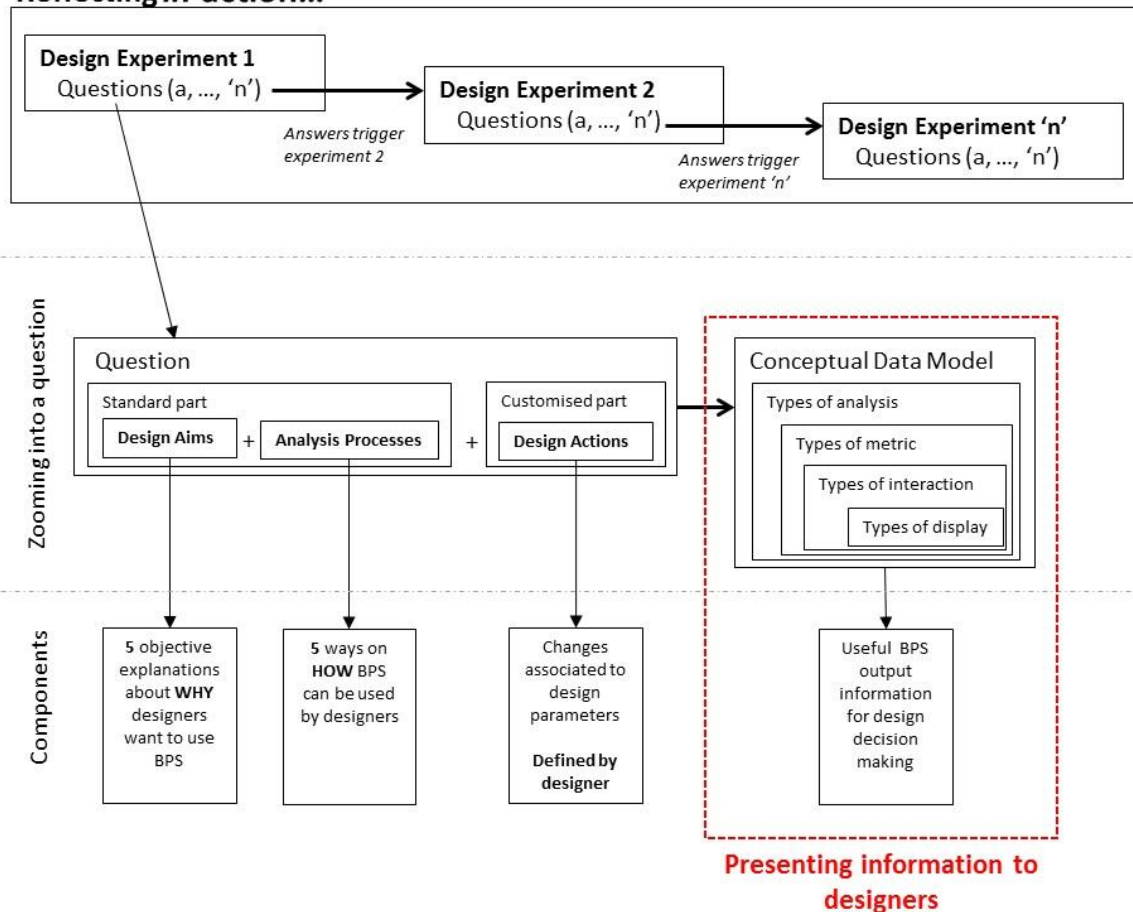


Figure 2 – An illustration of the framework produced in Bleil de Souza and Tucker 2014.

Since only five aims<sup>2</sup> and five analysis processes<sup>3</sup> were identified and confirmed in a survey and interviews with building designers, around 20 standard questions were developed (see Bleil de Souza and Tucker 2014 for a full list of questions). Examples of questions are: “*How sensitive is this building to [design action]?*” “*How does this building perform with [design action]?*” Designers are expected to be able to select which standard question(s) and (sets) of design action(s) best fit the design experiment they are undertaking. Examples of design actions include: different types of shading devices, different glazing ratios, a specific type of external wall panel system, etc.

### 1.2. The conceptual data model

The framework paper outlined the need for a conceptual data model to be developed. This current paper explores in detail how the conceptual data model for **presenting** simulation information for design decision making (dashed box in Figure 1) was generated and how it can become operational. It specifically focuses on the type and relationship among data as well as representation systems building designers need to make decisions. This conceptual data model does not focus on data management or on proposing a database structure. It is a starting point for constructing a database / database management system in which entities, their attributes and relationships are described without using a formal language and independently of any choice of database technology.

<sup>2</sup> Five aims from Bleil de Souza and Tucker 2014 are: (i) Understanding a specific performance result, (ii) Exploring a specific design strategy, (iii) Meeting a target, (iv) Assessing a specific product and (v) Optimising.

<sup>3</sup> Analysis processes are described in detail in Table 1 below

The conceptual data model, like the framework, emerged from a process of Participatory Action Research and Thematic Analysis of design work produced by 140 novice designers. All types of analysis, metrics, interaction with data and data displays were extracted from the 140 design journals. Principles of Information Visualization and dynamic thermal modelling were used to filter and quality assure these entity classes. Associations between pairs of entity classes were explored based on pairwise comparison used to identify appropriate and inappropriate combinations of relevant data for design decision making.

Pairwise comparisons are used to ensure that all possibilities of how the output is constructed have been considered, as opposed to simply assuming that the user will be satisfied for example with a list of figures or one type of chart. Therefore, the conceptual data model is intended to enable software developers to strike a balance between providing too much and not enough information for design decision making. Examples are provided to illustrate and discuss the potential and capabilities of the model. The full design and implementation of a database/ database management system is outside the scope of this study as is the interface to enable building designers to manage it.

The participatory methods used to produce the conceptual data model also provide its validation, as the model emerges from the identified needs of the user. A further stage of validation will only become relevant when (and if) the conceptual model is developed and implemented into a working system.

## 2. BACKGROUND

### 2.1 Representation systems

Previous initiatives which explored output data to inform design decision making mainly focused on expanding the scope of representation systems to describe and compare building performance. Simple examples of these can be found in most 'user friendly' simulation software to date (NREL 2013, AutoDesk Ecotect 2014, IES 2014, etc.). In these tools, some performance metrics can be displayed on top of 2D and 3D views designers are used to manipulate (plans, section, elevation, perspectives, etc.). These initiatives also include the development of integrated thermal performance metrics (e.g. comfort, hours of overheating, etc.) and more elaborate types of 3D representation systems (Examples of virtual reality images, movies, etc. can be seen in Evins et al 2012, Struck et al 2012, etc.).

Ways to display comparisons with benchmarks, notional buildings, regulatory targets and other design options were extensively explored in the simulation literature (Papamichael et al 1999, Papamichael 1999a, 1999b, 1999c, Soebarto and Williamson 2001, Prazeres 2006, Prazeres and Clarke 2003 and 2005 to cite a few). Examples provided by these authors range from Multi-Criteria Evaluation strategies to complex output interfaces with highlights to facilitate data interpretation. They generally focus on comparing different models and/or different performance metrics for a single model. The way comparisons are structured is appropriate to describe behaviour against targets but not very useful to describe behaviour of different design alternatives. When assessing different design alternatives, designers need to be reminded in a clear and straightforward way which design parameters were changed and by how much, in order for these changes to be associated with changes in building behaviour.

This issue seems to be addressed by some initiatives which explore the integration of parametric tests to existing simulation tools. As in parametric tests the focus lie on understanding the consequences that changing design parameters have into simulation results, comparisons are sometimes displayed mainly linked with these changes (Chlela et al 2009, Pratt and Bosworth 2011, Petersen and Svenden 2012, Ochoa and Capeluto 2009, to cite a few). However, when this is the case, information seems to be quite restricted in terms of how users can navigate through output data. Researchers provide generally one or two representation systems they believe are the most appropriate ones to display this kind of information. They tend not to query their suitability in terms of the way users interact with data and derive meaning from it.

When simple generative forms are used to produce design advice, output information tends to be more 'user friendly'. Scripts to produce them output geometrical boundaries that respond to certain performance criteria (Marsh and Haghparast 2004, Capeluto 2011, to cite a few). These boundaries further combined with legislation

requirements and site constraints, provide clear visual guidance to explore building form in the early design stages (Figure 3a). However, the same can rarely be said when more elaborate optimization routines are applied to produce design advice. In these cases, even though users are generally provided with a Pareto front graph to query on best design alternatives (Figure 3b), queries tend not to be displayed in a user friendly format (See Nguyen et al 2014 for a review of optimisation and building performance analysis). This means the user needs to post-process information that comes from optimization routines into something (s)he can understand to then query the content of this information.

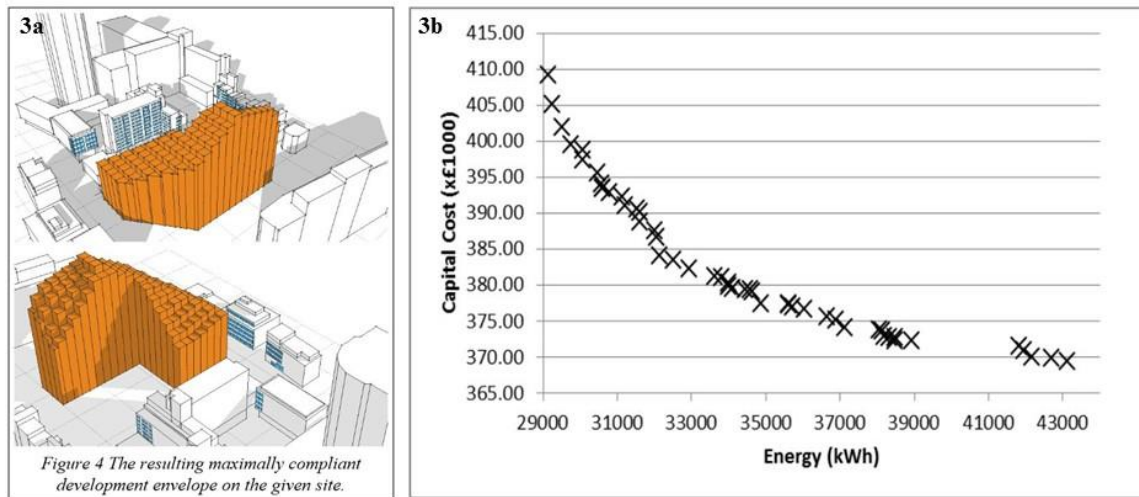


Figure 3 – a: visual guidance to explore building form produced from simple generative forms (Marsh 2005) vs. b: Pareto Graphs resultant from optimization studies (Brownlee and Wright 2012).

*In general, users want to avoid having to understand and deal with the complexities involved in generating information they use in their everyday activities: They want this information to be readily available. Building designers are no different. They do not want to deal with simulation output post-processing to be able to use this information for design decision making.*

These examples of outputs illustrate that while researchers and developers continue to propose and integrate new representation systems, comparative displays, parametric tests and different types of analysis algorithms to existing tools, there is a lack of a comprehensive overview or system that collects all these proposals and explores more general ways of ordering information. Therefore, a framework to post-process and shape simulation information for building designers to use was proposed by the authors. This current paper builds on this framework and explores the construction of a conceptual data model to be transformed into a database / data management system of meaningful simulation outputs to design decision making. Once developed, this database / data management system, potentially accessible through a user friendly interface, would guide designers to query simulation output data while undertaking design experiments. The database of outputs is not seen as exhaustive but could accept new additions, especially in data metrics and displays, following new research developments in these areas. This approach to structuring simulation software output information using a database / data management system can in theory be extended to any user, who could include building engineers and consultants needing different types of analysis and results on which to base design decisions.

### 2.3 Databases

Current databases, when used to organise simulation output information, do not have a format to recall information that meets building designers' needs (Stravrovavdis and Marsh 2005, Mahdavi et al. 2005, to cite a few). More specifically, they do not provide readily available information to be recalled on the following main aims designers have when using BPS (Building Performance Simulation) for design decision making: (i)

understanding a specific performance result; (ii) exploring a specific design strategy; (iii) meeting a target; (iv) assessing a specific product and (v) optimising.<sup>4</sup>

However, they are widely used by building designers particularly as nowadays Building Information Modelling (BIM) systems<sup>5</sup> are part of everyday design activities. They are also widely used by the building simulation community to organise simulation input information (materials, constructions and schedules)<sup>6</sup> and to benchmark building simulation results by comparing them with case studies<sup>7</sup>. They are starting to be used to facilitate parametric analysis (e.g. Turrin et al. 2001), meaning they are not only appropriate to structure simulation results but also that their use is common among designers and the simulation community. They are powerful tools for data management and enable choices to be pre-defined/customised, potentially facilitating knowledge sharing among practices and knowledge transfer to beginners and/or newcomers.

The purpose of the data model described in this paper is therefore to structure and represent simulation output data through a database / data management system. However, exploring simulation output data relevant to design decision making is seen independently of proposing a simulation output data interface. It is essential that this exploration happens prior to the development of an interface as any interface should focus on different user experiences in interacting with data and machines rather than on the data itself.

### 3. ANALYSIS AND METHODS

This work starts by using a Participatory Action Research approach. In this approach designers are invited to propose what they think are appropriate building thermal physics information for building design decision making. The advantages of using this type of approach is that beneficiaries themselves propose a solution to their own problems eliminating the needs for further tests. Examples of meaningful information for design decision making, from a designer's viewpoint, are extracted from a sample of 140 design journals. These journals narrate all steps used to solve a design problem which included thermal comfort, energy efficiency and the testing of passive design strategies (a summary of one of these journals is presented in Annex 1). The data set is limited to the design of an office building envelope in which heat balance calculations were undertaken using simplified methods. Hand calculations were used, instead of any kind of software, to prevent any bias by existing user interfaces to interfere with proposals. Those sorts of calculations were also seen as an efficient mechanism to facilitate knowledge transfer of building thermal physics concepts to designers.

A Thematic Analysis is applied on this empirical data sample. Thematic Analysis, a common research method from the Social Sciences, consists of investigating recurrent themes in a dataset so that a phenomenon can be described (Bryman 2008). A Thematic Analysis should not be confused with a statistical analysis. It comprises identifying and recording recurrent themes from *all* the data in a dataset so the conceptual data model can present all relevant possibilities regardless of how frequently they are used.

This successive data querying and filtering also involves reviewing the information generated from simplified methods. If this information is to be produced by dynamic thermal simulation tools, it should comply with the dynamic, systemic, non-linear and stochastic nature of building thermal physics phenomena. This compliance is achieved by using dynamic thermal modelling principles to revise and adapt metrics and analysis methods used in the data sample. Metrics or quantities used to measure building behaviour are changed (e.g. air temperatures are replaced by environmental / operative temperatures, metrics related to simplified heat balance breakdowns are eliminated, etc.). Appropriate analysis methods to post-process BPS data into a format which match design aims are proposed in replacement of the simplified ones found in the data sample<sup>8</sup> (e.g. simplified heat balance

---

<sup>4</sup> These limited number of aims and their relevance to design decision making were extensively explored in (Bleil de Souza and Tucker 2014). Even though most of these aims require multiple simulations or needs third party tools to be achieved, parts of them are now possible to be extracted directly from BPS software. Open Studio (NREL 2013) and Design Builder (Tindale 2013) provide some examples of easy configuration or semi-automatic parametric tests, indicating software developers are gradually understanding simulation packages alone are not enough to cover user needs.

<sup>5</sup> Databases are a powerful feature in BIM software such as AutoDesk Revit 2014, Graphisoft 2014, Bentley 2014, etc.

<sup>6</sup> Databases with simulation input data can be found in Tindale 2013, ESRU 2013, NREL 2013, IES 2014, to cite a few.

<sup>7</sup> Databases to benchmark simulation results can be found in Knight et al 2006 and Knight et al 2007.

<sup>8</sup> Details involving this replacement are discussed in section 4.1.

breakdown results are replaced by elimination parametric tests to explain main causes of building behaviour, etc.).

Information Visualization principles (Ward et al. 2010, Mazza 2009, Spence 2007, Card et al 1999 and Schneiderman 1996) are used to codify displays and organise subcategories of interactions with data. Displays are described by a pseudo-code to facilitate data manipulation. Interaction with data is explored according to proposed by Schneiderman 1996 who states that users should be provided with the ability to:

- Obtain an overview of the data to get a broad understanding of a phenomena
- Zoom into areas of specific interest and filter out unwanted data
- Ask for a specific type of detailed information
- Retrace previous steps (retrace history)
- Compare and relate information

Overviews and zooms, become instances of the conceptual data model class of ‘types of interaction with data’ whereas the remaining three types of interaction with data are embedded in the conceptual data model structure.

The different methods, principles and approaches of this research together with the data they used or generated are summarised in Figure 4. Details involved in defining each class of the conceptual data model and the list of data which belongs to them are explained in section 4.

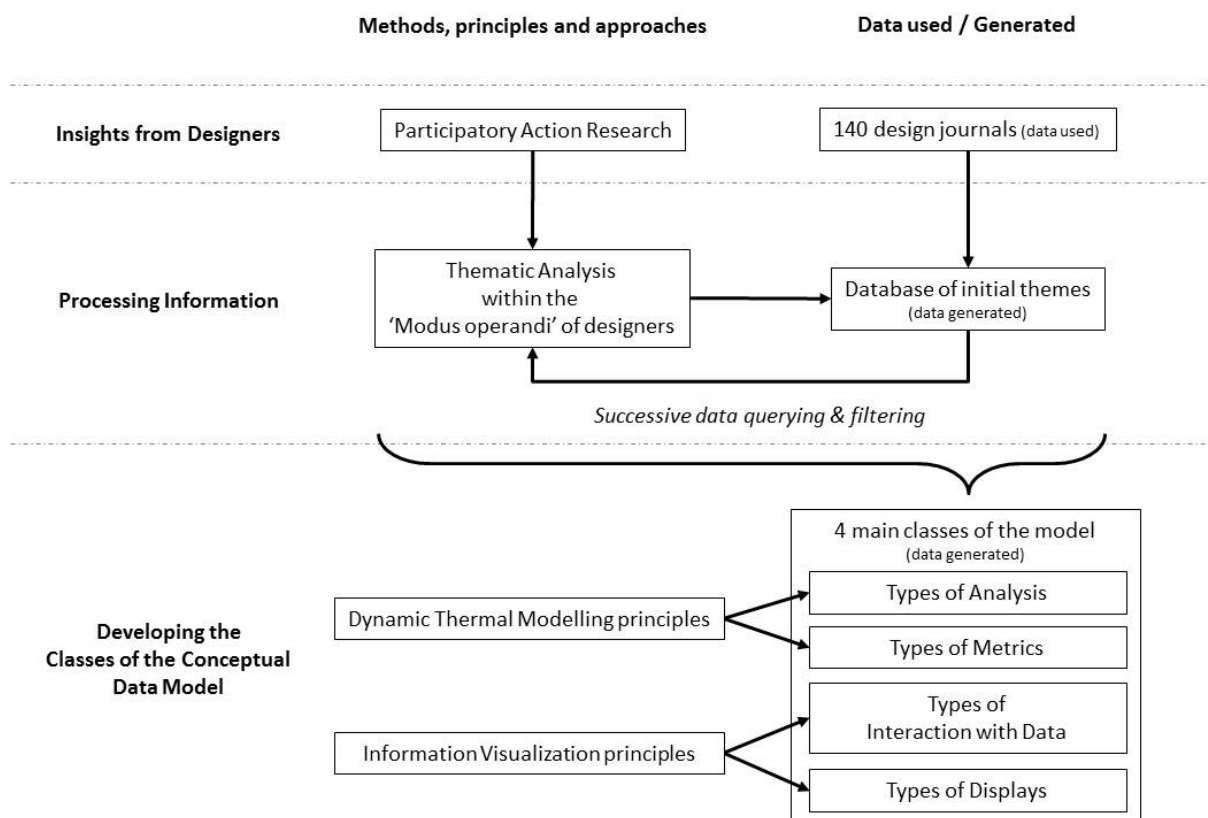


Figure 4 – Summary of how the conceptual data model classes emerged.

Pairwise comparisons are used to explore appropriate combinations of relevant data for design decision making. Pairwise comparisons are a common analysis method used in the Social Science, Psychology and Artificial Intelligence to undertake comparative judgement between pairs of data (David, 1988). In computer science, they are also used to undertake internal validation of software development. In this conceptual data model, they illustrate if a combination is preferred or not.

The four classes of the conceptual data model enable six pairwise comparisons to be explored (Figure 5). Comparisons were numbered according to the sequence of operation indicated in Figure 5. Preferred

combinations discussed in detail in section 5 come mainly from the dataset, polished by information from the literature on BPS software. However, preferred combinations reported in section 5 should not be seen as exhaustive and could be further developed / refined and even made specific to each different design practice. They could be open to being customized by each different practice depending on the building typologies they generally deal with, types of contracts undertaken, specific ways they organise design teams, etc.<sup>9</sup> Section 5 is therefore intended to illustrate how pairwise comparisons are used to relate the four classes of the conceptual data model for 'generic' types of low energy design problems.

Figure 5 illustrates the relationship between the conceptual data model and a design question from the framework proposed in Bleil de Souza and Tucker 2014. The analysis process in a question narrows down the search in preferred combinations in comparison 1. Types of display not appropriate to respond to the type of analysis in the question are automatically eliminated from a future list of choices. Aims and actions can be used to infer a selection of 'metrics' and 'types of interaction with data' potentially available to answer the question. The dashed arrows (Figure 5) indicate a separate study would be necessary to determine if this selection could be at least partially automated. In case this selection should be manual, it would be necessary to determine the best user interface and database / database management system to present this information for designers to select.

Once metrics and types of interaction with data are chosen, a search in preferred combinations in comparison 2 can be undertaken. Comparisons 1 and 2 would provide all the necessary constraints to automate searches in the remaining comparisons. The aim of the search is to output a narrow list of types of display to represent the answer to the question. Choices of displays should preferably be provided rather than a single display option.

---

<sup>9</sup> Custom based information, rather common in Building Information Modelling (BIM) systems, could possibly enable context based and potentially more efficient BPS results retrieval.



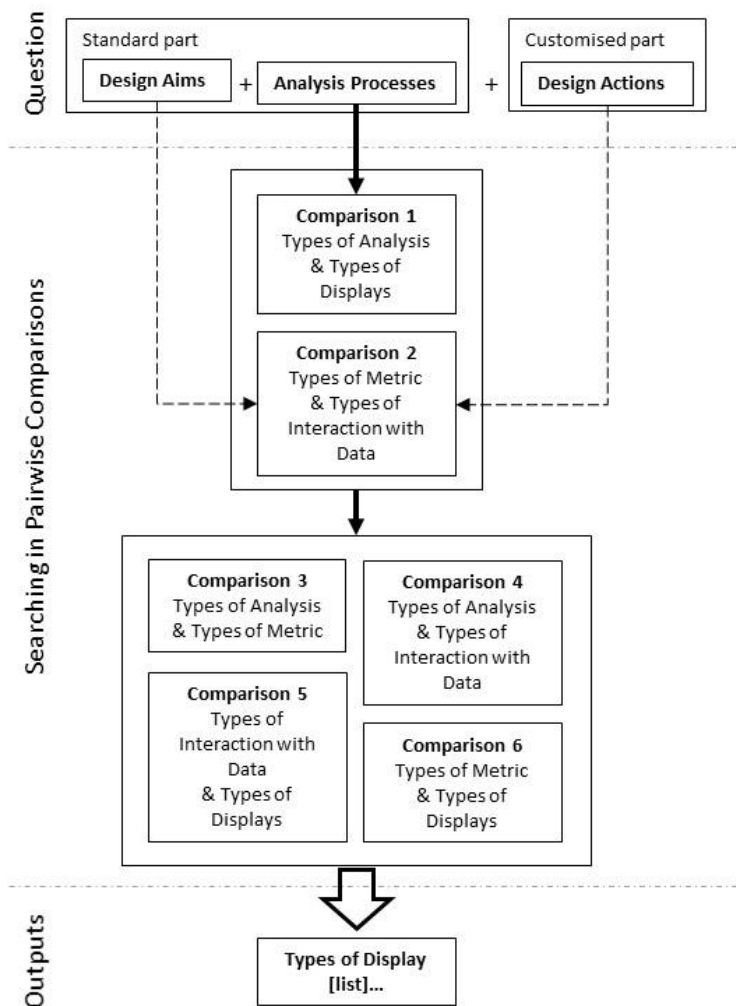


Figure 5 – Relationships between the conceptual data model and the framework developed in Bleil de Souza and Tucker 2014.

#### 4. DEFINING CLASSES OF THE CONCEPTUAL DATA MODEL:

The classes of the conceptual data model are discussed in this section. They were initially listed in Bleil De Souza and Tucker (2013) but are described here in terms of the data model. A definition for each class is provided followed by an explanation about how it is defined based on information from the dataset, principles of dynamic thermal modelling and Information Visualization. Recommended lists of instances for each class are provided based on the empirical data set in combination with information from the literature and BPS software output interfaces. These lists of instances are not supposed to be exhaustive.

##### 4.1 ‘Types of analysis’ class

Definition: ‘Types of analyses’ are a class which describes and defines how building designers would use dynamic thermal simulation tools to inform or assess design decisions. They are important procedures or algorithms to extract design advice or undertake performance queries in BPS output data. Controlling different types of analysis is seen as the most important aspect of integrating BPS tools throughout the building design process<sup>10</sup>. Table 1 provides a list of the five types of analysis instances which belong to this class together with the purpose in using each of these analysis instances to inform design decision making.

Data evidence: Information from the data set reports mainly descriptive and comparative types of analysis instances. Many comparisons focus on understanding the contribution of each of the heat balance component in

<sup>10</sup> See Bleil de Souza and Tucker 2014 “further insights and criticism” for interviews with designers on this topic.

the overall building behaviour. They are used to understand causes of building performance and provide some information on where to act to improve it. Comparisons with targets and standards and comparisons among different design alternatives are also common. Elimination parametric is used to illustrate the influence of internal gains in overall heating and cooling demands. Sensitivity tests are sometimes undertaken to experiment with window areas and window material properties. Optimization routines are sometimes used to explore shading device form.

Each analysis instance reported in the dataset was critically assessed using dynamic thermal modelling principles to ensure the dynamic, systemic, non-linear and stochastic nature of building thermal physics phenomena would be preserved. Analysis instances to explain building behaviour based on simplified methods, (e.g. comparing heat balance breakdowns) were replaced by elimination parametric tests as suggested by SERI 1985<sup>11</sup>. Main causes of building behaviour could be provided with 5 tests eliminating the following variables one at a time: internal gains, ventilation losses and gains, solar gains, fabric conduction losses or gains and fabric storage. Specific causes of building behaviour could be provided with more detailed tests: (i) eliminating usage related variables one at a time (people, artificial lighting, equipment and ventilation losses or gains) or (ii) eliminating building related variables one at a time (window conduction, wall conduction, roof conduction, floor conduction, window mass, wall mass, roof mass, floor mass, solar, infiltration).

Type of Analysis	Purpose of analysis
Descriptive	To describe performance behaviour of one single model. To remind the user of a base case or starting point To create a benchmark for comparison
Comparative	To compare 'n' different parameters in a model To compare a single parameter across different models To compare 'n' different parameters across 'n' different models
Elimination Parametric <sup>12</sup>	To explain causes of a specific building behaviour or performance results
Sensitivity Analysis	To inform on the sensitivity of the model to changing a single parameter To inform on the sensitivity of the model to changing 'n' parameters
Optimization	To inform on the best performance for the optimum combination of a group of pre-defined parameters

Table 1 – Types of analysis to be included in the conceptual data model (From Bleil de Souza and Tucker 2014)

#### **4.2 'Types of metrics' class:**

**Definition:** 'Types of metrics' are a class which describes and defines the different quantities associated with building behaviour relevant to design decision making. These quantities need to be capable of being represented as time series, summarised and aggregated as appropriate enabling designers to see when exactly heating, cooling and artificial lighting are needed through structured searches for overheating and under heating patterns at typical and peak days (as recommended by SERI 1985)<sup>13</sup>. Table 2 provides a list of the metric instances which belong to this class.

**Data evidence:** The data set included mainly metrics used to describe overall building performance (e.g. heating and cooling demands, temperatures, etc.). A second common set of metrics is used to understand causes behind this performance in attempt to gain insights on where to act in the building to improve its behaviour (e.g. heat balance breakdowns). More specific metric instances are used to assess specific design intents (e.g. shading and

<sup>11</sup> Breakdowns from BPS are difficult to interpret especially when designers want to know where to act on the fabric and/or relate fabric and solar radiation to improve building behaviour. Identifying the main contributors in the air heat balance breakdown could be initially informative. However, tracing information further in the inside and outside surface heat balance breakdowns is not an easy task – if at all possible.

<sup>12</sup> Even though elimination parametric can be considered a sub-case or special type of sensitivity analysis, the authors decide to treat it separately in this conceptual data model because it can be examined as a special case of analysis prone to automation

<sup>13</sup> The six 'key' days suggested by SERI 1985 would enable designers to get a broader understanding of when energy is needed without being overloaded by large amounts of time series graphs with potentially minimal and/or meaningless extra information to 'be digested'.

lighting metrics are also used to assess if a desired type of atmosphere is achieved in some of the internal spaces). Metrics instances in the dataset can be grouped into: comfort related metrics (air temperatures, daylight factors and illuminance levels), solar related metrics (incident solar radiation on windows and data related to shading) and energy related metrics (heating and cooling demands, heating / cooling degree hours, electric energy consumption and heat balance breakdowns).

Some of these metric instances are adjusted to be more precise in delivering the information requested (e.g. air temperatures are replaced by environmental/ operative temperatures to provide a better indication of comfort; heating, cooling and lighting energy consumption are replaced by heating, cooling and lighting energy consumed per fuel type to account for other sources of energy supply). Metric instances related to heat balance breakdowns are eliminated (see discussion in section 4.1). New metric instances related to comfort and passive building behaviour are introduced (e.g. PMV and working hours operating without HVAC respectively). A series of metric instances related to cost are suggested (following SERI 1985, Waltz 2000, Franconi 2011, to cite a few).

	<b>Metric</b>
<b>Comfort related metrics</b>	Environmental / Operative temperature (min, max, mean – annual, monthly & hourly - typical & design days)
	PMV, PPD or any other comfort metric (typical & design days)
	Daylight illuminance (min, max, mean, peak - annual, monthly, typical, design days) – values for grid in space or 1 average value per room
	Time exceeding glare index set point (annual, monthly, typical & design day)
<b>Cost related metrics</b>	CO2 emissions
	Capital cost heating, cooling, lighting (i.e. cost of HVAC & lighting machines, ducts & controls)
	Operational cost heating, cooling and lighting (i.e. annual energy use and /or peak energy use if tariffs differ)
	Minimum rate of return on investment
	Investment time
	Amount of money to spend on improvements
<b>Energy related metrics</b>	Heating, Cooling and Lighting thermal energy delivered to space (annual, monthly, peak, typical & design days)
	Energy use for heating, cooling, lighting at the meter (annual, seasonal, monthly, peak, typical & design days)
	Working hours operating in a passive mode or working hours within, above and below the comfort zone (annual, seasonal, monthly)
	Working hours not requiring artificial lighting (annual, seasonal, typical & design days)
<b>Shading / solar related metrics</b>	Transmitted solar radiation (annual, seasonal, typical day& design days)
	Shading on floor plan in % (annual, typical & design days profile)
	Shaded surfaces (internal and external) (typical & design days profile)

Table 2 – Metrics relevant to display meaningful information to design decision making (from Bleil de Souza and Tucker 2014)

#### **4.3 ‘Types of interaction with data’ class:**

Definition: ‘Types of interaction with data’ are a class which describes and defines possibilities involved in and afforded by manipulating thermal simulation post-processed output information. The instances defined for this class are the following: Overviews, zoom into different time frames, zoom into different location / orientation<sup>14</sup> and zoom into parameters potentially related to design actions.

Data evidence: Information from the data set was organised into the different types of interaction with data instances reported in section 3. Overviews and different types of zoom were used to gather insights about how designers query information relevant to design decision making. Overviews provide data summaries (Figure 6a). Zooms into different time frames are generally used to increase understanding about a specific type of behaviour (Figure 6b). Zoom into different building locations, façade orientations and construction assemblages are instrumental to design decisions. They are generally displayed using performance metric instances represented on top of plans, elevations and sections (Figure 6c).

<sup>14</sup> Location and orientation are words designers understand. They were therefore used to replace the simulation jargon of ‘zone’ and ‘aspect’.

Types of interaction with data should be explicitly organised to facilitate data query, minimise visual noise and reducing the “cognitive load by removing unnecessary information from displays” (Lidwell et al 2011). Further empirical studies would be necessary to conclude if precise definitions of overviews and zooms can be generalised or if they need to be addressed on a case-by-case basis (e.g. would looking at energy use in a specific time frame, for instance the summer period, be considered an overview or zoom into time? The answer to this might potentially depend on the type of project, personal preferences, etc.). Proposing ‘progressive disclosure’<sup>15</sup> would also involve investigations to indicate whether these can be generalised or need to be addressed in a case-by-case basis.

---

<sup>15</sup> “a strategy for managing information complexity in which only necessary or required information is displayed at any given time” (Lidwell et al 2010)

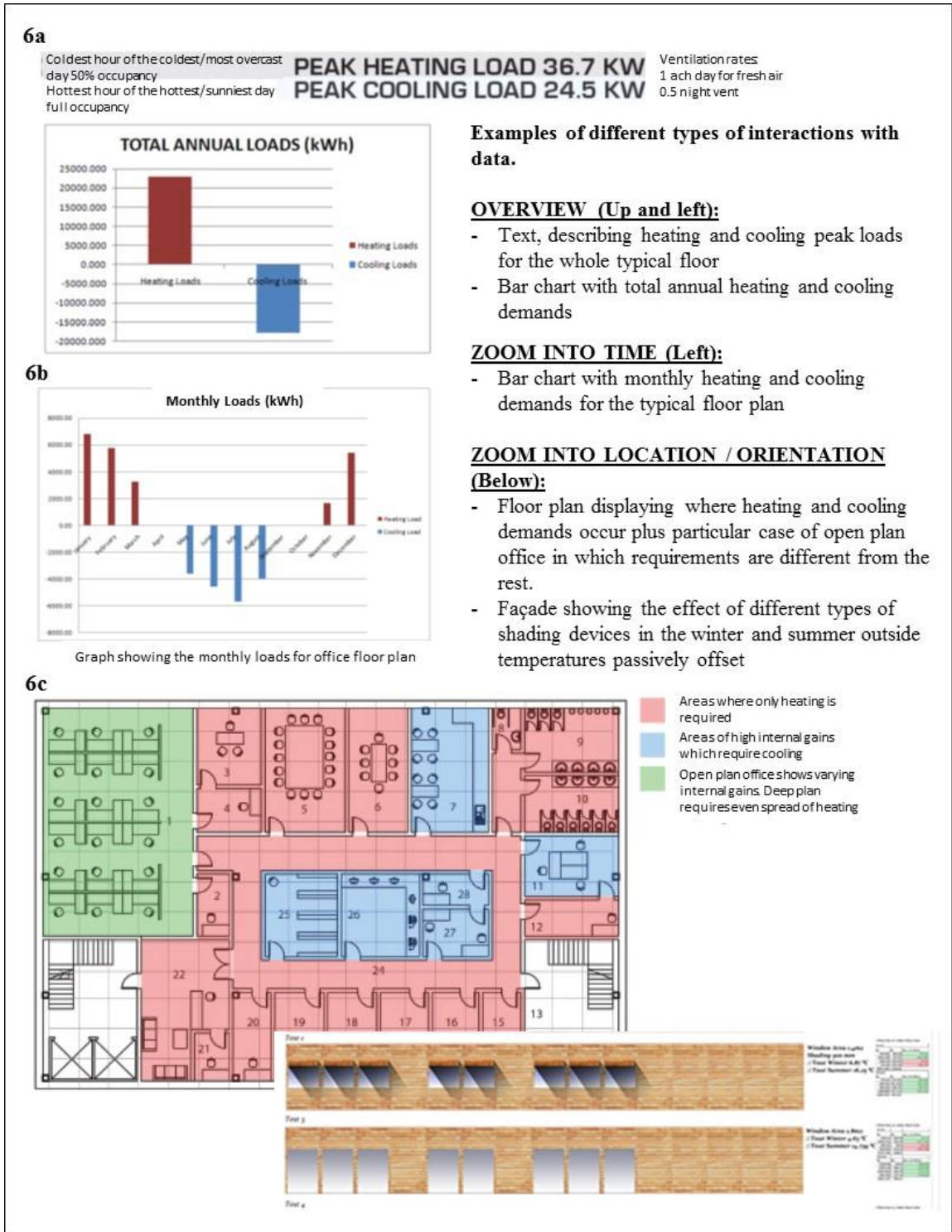


Figure 6 – Examples from types of interaction with data found in the dataset

**4.4 ‘Types of data display’ class:**

**Definitions:** ‘Types of data displays’ are a class which describes or defines the different ways of representing useful information for design decision making. An indicative notation system in the form of a pseudo-code is developed. This provides a synthetic and clear description of each display instance facilitating their manipulation in the conceptual data model structure as well as their interpretation by computer programmers.

**Data evidence:** The empirical dataset is rich in information display instances especially to connect performance information with design parameters (Figure 7). Representation systems can be of two types: (i) *Location based,*

in which performance metrics are displayed on top of commonly used building design displays (e.g. plans, sections, elevations, etc.); (ii) *Abstract*, in which performance is displayed in a non-spatial way through graphs, tables, text, etc. In the first case, the aim is to inform *where* a specific parameter or performance result would occur or *which specific building design element* is mainly responsible for causing specific resultant behaviour. The second case seems to be more useful when highlight strategies are adopted to help interpret information (e.g. ranks, ranges and differences between two or more options or between an option and a target).

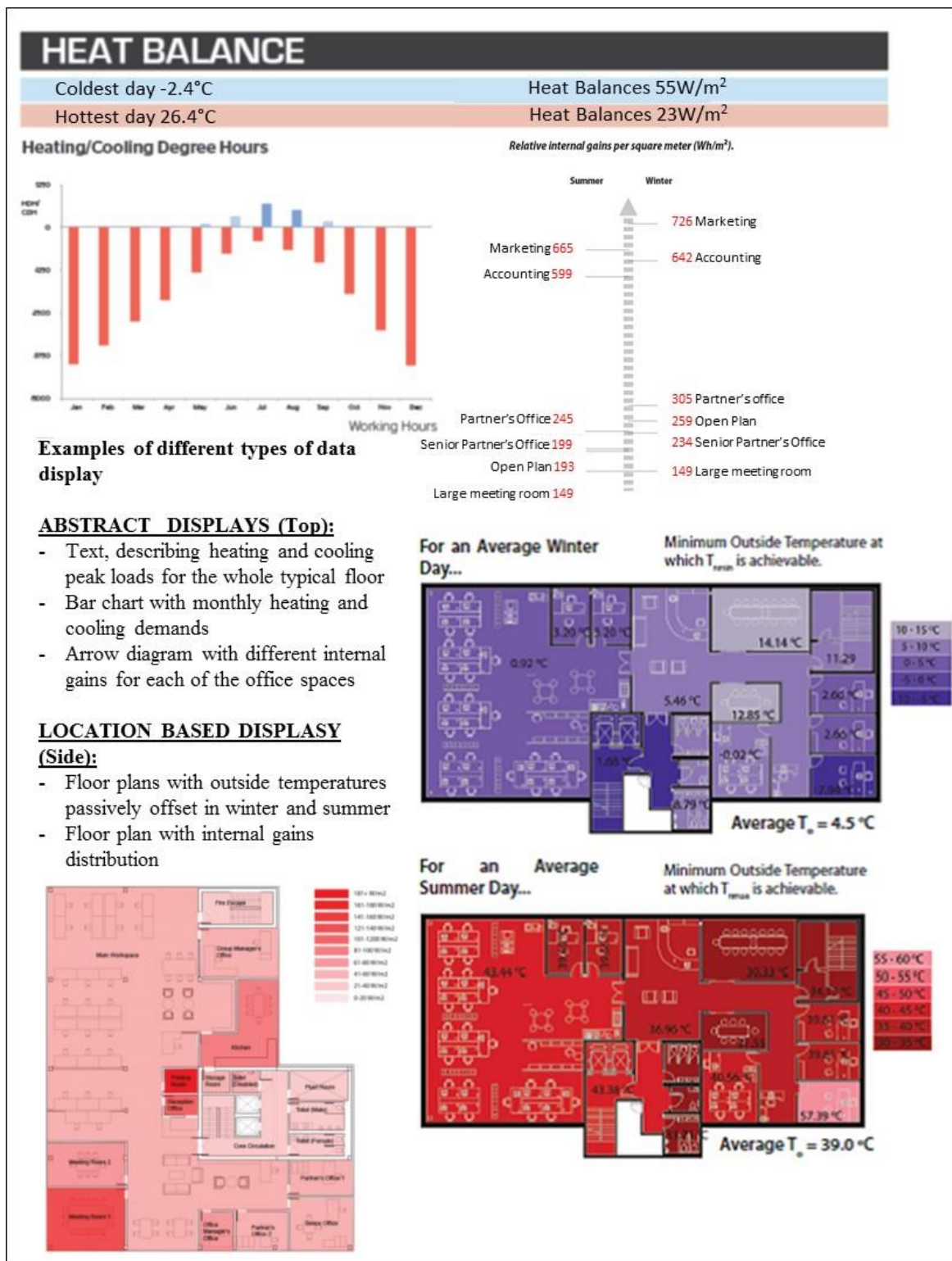


Figure 7 – Examples of different types of data display proposed by building designers

Display instances from the data set were identified, classified and had indicative pseudo-code assigned to specify their content. In this pseudo-code a display instance is defined by a name followed by its attributes. The names for each display instance come from the literature of Information Visualization (Specifically Ward et al. 2010, Mazza 2009 and Wright 2007). The respective attributes are listed in Table 3 together with examples of how important information can be highlighted. The list of highlights is far from exhaustive and does not include interactive highlights (such as brushing, etc.). Table 3 *only informs how things can be highlighted - NOT what information can be highlighted*. The way information can be highlighted depends on the display instance used to represent it, whereas the type of information to be highlighted depends on the aims behind an analysis.

Types of Display	Attributes	Highlights (examples)
Table (m(1...x), n(1...y))	m = dimensions in data (1...x) (columns) n = number of records (1...y) (rows)	Coloured cell
Dense Table (m(1...x), sm(1...z), n(1...y))	m = dimensions in data (1...x) (columns) sm = sub-dimensions in data (1...z) (sub-column) n = number of records (1...y) (rows)	Coloured cell
Bar chart (Dg (1...n), My)	Dg (1...n) = nominal data group (1...n) (X-axis) My = metric (Y-axis)	Rank (Dotted line from Y-axis)
Arrow diagram (Dg, My)	Dg = nominal data group (X-axis) My = metric (Y-axis)	Coloured Circle
Grouped bar chart (Dg (1...m), Sg (1...n), My)	Dg = nominal data group (1...m) (X-axis) Sg = sub group (1...n) (X-axis) My = metric (Y-axis)	Rank (Dotted line from Y-axis)
Stacked bar chart (Dg(1...m), My(1...n))	Dg = data group (1...m) (X-axis) My(1...n) = metric (1...n) (Y-axis)	Rank (Dotted line from Y-axis)
Pie chart (S(1..n), M)	S(1..n) = Sectors (1...n) M = metric	
2D line graph (Mx, My)	Mx = metric (X-axis) My = metric (Y-axis)	(Dotted line from Y-axis) (Shaded Area)
2D Superimposed line graph (Dg(1...n), Mx, My)	Dg (1...n) = data group (1...n) (line) Mx = metric (X-axis) My = metric (Y-axis)	Bold colour line (Dotted line from Y-axis) (Shaded Area)
Histogram (Ix, Fy, M)	Ix = interval (X-axis) Fy= frequency (Y-axis) M = metric	(Dotted line from Y-axis)
Superimposed histogram (Dg(1...n), Ix, Fy, M)	Dg (1...n) = data group (1...n) Ix = interval (X-axis) Fy= frequency (Y-axis) M = metric	Differences shaded (Dotted line from Y-axis)
Tornado chart (Mx, Vy(1...n))	Mx = metric (X-axis) Vy (1...n) = variables (1...n) (Y-axis)	Rank (Dotted line from Y-axis)
Multiple Tornado chart [C (Mx, Vy(1...n))]	C = category Mx = metric (X-axis) Vy (1...n) = variables (1...n) (Y-axis)	Rank (Dotted line from Y-axis)
Multimetric Tornado chart (Mx(1...n), Vy(1...n))	Mx 1...n) = metric (1...n) (X-axis) Vy (1...n) = variables (1...n) (Y-axis)	
2-D Contour plot (S, M, I())	S = surface M = metric I = interval (integer or normalised)	Overlaid polygon (Shaded below target performance)
2-D Pareto front graph (Mx, My)	Mx = metric (X-axis) My = metric (Y-axis)	Coloured dots in the Pareto front (Dotted line from Y-axis & X-axis)
2-D surface view (S, M, Cs or txt)	S = surface M = metric Cs = Colour scheme Txt = text	Colour + polygon (Shaded below target)
Carpet plot (Mx, My, Mc, Cs)	Mx = metric (X-axis) My = metric (Y-axis) Mc = metric (colour) Cs = Colour scheme	(Shaded below target performance)
Box plot (Dg, M, D)	Dg = data group M = metric	

	D = distribution (e.g. limits of the box)	
Multiple Box plot (Dg(1...n), M, D)	Dg (1...n) = data group (1...n) M = metric D = distribution (e.g. limits of the box)	Rank (Dotted line from Y-axis) (Shaded area)

Table 3 – Different data displays and their respective pseudo-code with highlights (Examples of how targets can be highlighted are provided in brackets on the highlight column)

## 5. EXPLORING PAIRWISE COMPARISONS OF THE CONCEPTUAL DATA MODEL

This section examines the preferred combinations of each of the 6 pairwise comparisons of the conceptual data model. Preferred combinations are not exhaustive and should in theory be customizable. Preferred combinations in each comparison are described following the sequence of operations outlined in Figure 5. Principles underlying each combination are outlined together with comments for combinations that should not be allowed. While many of the combinations presented in tables 4-7 are allowed in theory, they would be limited in practice by the simulation software being used, and therefore also provide a means by which any particular software can be assessed as to its functionality in terms of provision of outputs.

### 5.1 Comparison 1: Types of analysis & types of data displays

Preferences for combining these two classes are illustrated in Table 4 with the following principles underlying them:

- Descriptive analyses can be represented using the vast majority of display instances and provide more possibilities for different metrics to be compared without cluttering.
- Elimination parametric tests, sensitivity tests and comparative analysis can be represented using similar display instances as they all involve comparing different models. Comparisons can be emphasized through data grouping (e.g. grouped bar charts), data superimposition (e.g. superimposed histograms or line graphs) and/or by increasing data density (e.g. dense tables).
- Data from sensitivity tests can be summarised through special display instances called Tornado charts. These are modified bar charts with ranked data categories listed vertically generally used to illustrate the relative importance of each variable of a sensitivity test.
- Optimization data are generally summarised through Pareto front graphs which could be a useful interface to further query optimization results. The term “After zoom” in Table 4 refers to potential types of displays to be presented after querying the Pareto Front graphs. Zooming into a specific point of the Pareto graph could lead to display instances suitable to represent descriptions. Zooming into a specific region of the Pareto graph could lead to display instances suitable to represent comparisons. Histograms, used to illustrate how often values for each specific design parameter being optimised were used in optimisation tests, could assist in identifying the most important contributors to building performance.
- All analysis instances, with the exception of descriptive ones, when displayed as 2D contour plots or as 2D surface views, could be represented as small multiples (i.e. showing multiple 2D displays, one for each different model being compared).

Types of display	Types of Analysis				
	Descriptive	Comparative	Elimination Parametric	Sensitivity Tests	Optimization
Tables	✓	✓	✓	✓	After zoom
Dense tables	✓	✓	✓	✓	After zoom
Bar chart	✓	✓	✓	✓	After zoom
Grouped bar chart	✓	✓	✓	✓	After zoom
Stacked bar chart	✓	✓	✓	✓	After zoom
Arrow diagram	✓	✓		✓	After zoom
Pie chart	✓				After zoom
2D line graph	✓	✓		✓	After zoom
2D superimposed line graph	✓	✓	✓	✓	After zoom
Histogram	✓				✓
Superimposed histogram	✓	✓	✓	✓	After zoom



Tornado chart				✓	
Multiple tornado chart				✓	
Multi-metric tornado chart				✓	
2D contour plot	✓	Small multiples	✓	Small multiples	After zoom / Small multiples
2D Pareto front graph					✓
2D surface view	✓	Small multiples	✓	Small multiples	After zoom / Small multiples
Carpet plot	✓				After zoom
Box plot	✓				After zoom
Multiple box plot		✓	✓	✓	After zoom
...					

Table 4 -Comparison 1: Types of analysis and types of data display.

### 5.2 Comparison 2: Types of metrics & types of interaction with data

Preferences for combining these two classes are illustrated in Table 5 with the following principles underlying them:

- Comfort and energy related metric instances are relevant to be displayed in all types of interaction with data. At an overview level, they are useful to quantify and benchmark overall building behaviour. At a zoom level, they improve understanding on when, where and potentially why performance is happening.
- The time and space dependency of shading/solar related metrics make them more appropriate to be displayed preferably when zooming into data.
- Cost related metrics are suitable to be displayed at an overview level but could also be displayed at zoom level in fine tuning, resolving conflicting design objectives or whatever other analogous circumstance.

Type of metric		Types of interaction with data			
		Overview	Zooms		
			Time	Location / Orientation	Parameters potentially related to design actions
Comfort Metrics	Environmental / Operative temperature	✓	✓	✓	✓
	PMV, PPD or any other comfort metric	✓	✓	✓	✓
	Daylight illuminance	✓	Metric tends to be shown for a specific time frame and location		✓
	Time exceeding glare index set point	✓	Metric tends to be shown for a specific time frame and location		✓
Cost Metrics	CO2 emissions	✓			✓
	Capital cost heating, cooling, lighting	✓		✓	✓
	Operational cost heating, cooling and lighting	✓		✓	✓
	Minimum rate of return on investment	✓			✓
	Investment time	✓			
	Amount of money to spend in improvements	✓			✓
Energy Metrics	Heating, Cooling and Lighting thermal energy delivered to space	✓	✓	✓	✓
	Energy use for heating, cooling, lighting at the meter	✓	✓	✓	✓
	Working hours operating on a passive mode or working hours within, above and below the comfort zone	✓	✓	✓	✓
	Working hours not requiring artificial lighting	✓	✓	✓	✓
Shading / Solar Metrics	Transmitted solar radiation		Metric tends to be shown for a specific time frame and location		✓
	Shading on floor plan in %		Metric tends to be shown for a specific time frame and location		✓

	Shaded surfaces (internal and external)		Metric tends to be shown for a specific time frame and location	✓
--	---	--	---	---

Table 5 – Comparison 2: Types of metric and types of interaction with data.

### **5.3 Comparison 3: Types of analysis & types of metrics**

Preferences for combining these two classes of the conceptual data model are not reported in a table because any metric instance can be used in any analysis instance.

### **5.4 Comparison 4: Types of analysis & types of interaction with data**

Preferences for combining these two classes of the conceptual data model result in all combinations being possible due to the principles listed below.

- All analysis instances should enable interaction with data at an overview level to convey data summaries. Specifically in the case of elimination parametric tests, main causes of building behaviour could be provided at an overview level reporting the following variables: internal gains, ventilation losses and gains, solar gains, fabric conduction losses or gains and fabric storage.
- All analysis instances should also enable interaction with data at all zoom levels to improve understanding on when and where performance is happening as well as on what is causing it. Specifically in the case of elimination parametric tests, causes of building behaviour could be provided by zooming into parameters potentially related to design actions reporting: (i) usage related variables (people, artificial lighting, equipment and ventilation losses or gains) or (ii) building related variable losses or gains (window conduction, wall conduction, roof conduction, floor conduction, window mass, wall mass, roof mass, floor mass, solar, infiltration). This same type of zoom should also be enabled in optimizations if designers wish to use optimization results to explore which design parameters are the most important contributors to building performance.

### **5.5 Comparison 5: Types of interactions with data & types of data displays**

Preferences for combining these two classes are examined considering principles of Information Visualization. In these principles, excellence in data display follows from communicating complex ideas with clarity, precision and efficiency (Tuft 1983). Representation systems should avoid data distortion, encourage comparisons, provide coherence to large data sets and display the data such that the substance of it, what it represents, is brought into focus rather than means and methods behind representations. Comparisons should be controlled to a small number of displays for many variables (5 being a good number) and multiple small views of states in a single variable (small multiples) (Lidwell et al 2011).

Following these criteria, only display instances considered most appropriate for the different types of interaction with data are marked as preferred. This means fields not filled with an ‘✓’ might be prone to data cluttering compromising the speed and effectiveness of results interpretation. Fields filled with ‘small multiples’ indicate multiple displays of the assigned type. Preferences for combining these two classes are illustrated in Table 6 and discussed below:

- Overviews should convey data summaries and broad indications of performance with clarity. The preferred display instances for these should deal with caution with data density and data superimposition (fields related to superimposed and dense types of displays were not filled with a ‘✓’).
- Zooms into different time frames (seasonal, monthly, typical days, etc.) are preferred to be displayed using instances which emphasize *when* performance needs to be improved. Performance profiles are suitable to be illustrated using line graphs. Performance data aggregated over a specific time frame are suitable to be illustrated through bar charts or tables.
- Zooms into different types of location / orientation could be provided directly through spatial representation systems (2D surface views, contour plots, etc.). They could also be provided through abstract display instances, having at least one nominal variable to represent location/orientation (bar charts, arrow diagrams, etc.).
- Zooming into design parameters potentially related to different design actions are generally presented by display instances which emphasize comparing performance data summaries for different models.

Although this means display instances in this case might be very similar to the ones requested for overviews, more in depth information can be provided through data superimposition and data density increase (e.g. dense tables and superimposed histograms). Information could be complemented by 2D contour plots or surface views displayed as small multiples providing a performance summary of the impact of design variables potentially related to design actions in space.

Further studies would be necessary to explore potential useful combinations of different zoom instances. Are these more efficiently managed when directly combined (e.g. when zooming in time and location/orientation happen simultaneously) or are they are better managed if undertaken in sequence (e.g. zooming in time first and from there proceed to zooming into location/ orientation)? Further explorations of combining different zooms could be used to refine preferred combinations and provide a user defined structure to request details on demand.

Types of display	Types of Interaction			
	Overview	Zooms		
		Time	Location / Orientation	Parameters potentially related to design actions
Tables	✓	✓	✓	✓
Dense tables		✓	✓	✓
Bar chart	✓	✓	✓	✓
Grouped bar chart		✓	✓	✓
Stacked bar chart	✓	✓	✓	✓
Arrow diagram	✓	✓	✓	✓
Pie chart	✓	✓	✓	✓
2D line graph <sup>16</sup>	✓	✓	✓	✓
2D superimposed line graph		✓		✓
Histogram	✓	✓		✓
Superimposed histogram		✓	✓	✓
Tornado chart	✓	✓	✓	✓
Multiple tornado chart		✓	✓	✓
Multi-metric tornado chart	✓	✓	✓	✓
2D contour plot		✓	✓	✓ or small multiples
2D Pareto front graph	✓	✓		
2D surface view		✓	✓	Small multiples
Carpet plot		✓		
Box plot	✓			✓
Multiple box plot		✓		
...				

Table 6- Comparison 5: Types of interaction with data and types of data display

### **5.6 Comparison 6: Types of metrics & types of data displays**

Cost related metric instances were excluded from this combination. These instances require the application of financial value techniques and classical investment analysis methods to be processed and have an appropriate display instance attributed to them, which are beyond the scope of this study. The following principles of what is preferable in this pairwise comparison are outlined based on information from Table 7:

- ‘Thermal energy delivered to the space’ and ‘energy use at the meter’ can be represented using the majority of display instances listed. 2D contour plots should only be available for displaying these metrics if energy results enable simulations to be undertaken at a sub-zone level.
- ‘Time exceeding glare index’, ‘working hours operating in a passive mode’ and ‘working hours not requiring artificial lighting’ are similar metric instances. They are counts of the number of times a phenomenon occurs as expected and can be represented using most display instances depending on the level of data interaction required. As these metrics are not time dependant, they are not appropriate to be represented by line graphs or carpet plots.

<sup>16</sup> Line graphs in this case do not necessarily mean time series

- Temperatures and comfort indices mainly involve quantifying phenomena at a time instant. They can be represented either connected to this time instant when appropriate (e.g. 2D graphs for temperatures) or summarised using statistics (e.g. tables, histograms, box plots, etc.). Results can be plotted in 2D surface views to highlight where potential problems could be expected.
- ‘Transmitted solar radiation’, ‘shading on floor plan in %’ and ‘daylight illuminance’ are location based metric instances and should preferably be displayed through 2D contour plots and 2D surface views. The latter two metrics can also be summarised using histograms or tables and displayed in relation to time instants in carpet plots. ‘Transmitted solar radiation’ can also be summarised in tables and displayed in relation to time instants using 2D line graphs. ‘Shaded surfaces’ are generally represented in 2D surface views to better convey the geometric representation of a shading pattern

Zooms should also be enabled at a metric instance level so that users could query for example the heating and cooling portions of thermal energy delivered to the spaces, discriminate uncomfortable hours due to overheating and under-heating in comfort indices, etc. Zooms of this type were not explored in detail in Table 7 to avoid information overload.

Types of display	Types of metric										
	Comfort Metrics				Energy Metrics				Shading / Solar Metrics		
	Environmental / Operative temperature	PMV, PPD or other indices	Daylight illuminance	Time exceeding glare index	Thermal energy delivered to space	Energy use at the meter	Working hours operating in a passive mode	Working hours not requiring artificial lighting	Transmitted solar radiation	Shading on floor plan in %	Shaded surfaces
Tables	✓	✓	✓	✓	✓	✓	✓	✓	✓	✓	
Dense tables	✓	✓	✓		✓	✓			✓	✓	
Bar chart		✓	✓	✓	✓	✓	✓				
Grouped bar chart		✓		✓	✓	✓	✓				
Stacked bar chart					✓	✓	✓				
Arrow diagram				✓	✓	✓	✓				
Pie chart		✓			✓	✓					
2D line graph	✓				✓	✓			✓		
2D superimposed line graph	✓				✓	✓			✓		
Histogram	✓	✓	✓	✓			✓	✓		✓	
Superimposed histogram	✓	✓	✓	✓			✓	✓		✓	
Tornado chart				✓	✓	✓	✓	✓			
Multiple tornado chart				✓	✓	✓	✓	✓			
Multi-metric tornado chart	✓	✓		✓	✓	✓	✓	✓			
2D contour plot			✓						✓	✓	
2D Pareto front graph				✓	✓	✓	✓	✓			
2D surface view	✓	✓	✓	✓	✓	✓	✓	✓	✓	✓	✓
Carpet plot			✓		✓	✓			✓	✓	
Box plot	✓	✓		✓	✓	✓	✓	✓			
Multiple box plot	✓	✓		✓	✓	✓	✓	✓			
...											

Table 7 -Comparison 6: Types of metric and types of data display.

## 6. DISCUSSION

### 6.1 Operation of the model

Operation of the model involves linking the design questions asked to the data produced as output (figure 2). As there are a limited number of questions it would be possible to supply these on one or more on-screen menu's to be manually selected. Figure 2 in theory also provides a template to interpret design questions which could be hand-coded on a natural language type of interface. A question / answering system would need to be developed to recognize a design input question as an instance of the template:

“<Design Aim> <Analysis Process> <Design Action>”

Once the system has found a matching template, it could recall a specific script to run simulations and the necessary ancillary tools (e.g. optimization routines) and/or procedures (e.g. automatic elimination parametric tests) to generate the data to answer the question automatically. The 20 questions developed are already a list of potential variations for the template question. They could be all hand-coded individually, simplifying the question answering system to focus only on identifying the different types of design actions for the different types of questions listed. The design of this kind input interface and the details related to the question / answering system are a problem of software implementation and beyond the scope of this study.

Generating answers to these questions would involve structuring modelling and simulations assumptions as well as writing scripts to identify patterns in results (e.g. identify discomfort, hours of overheating, flag zones in which it would happen and help the user to improve performance by displaying the causes of the problem, etc.) Many of these types of patterns could be automatically identified and reported to the users in a simplified way, through integrated performance metrics, simple text format (e.g. stating what is causing a problem), indicated in plan (e.g. where a problem is happening) etc. A full exploration about this part of the work is however addressed in Tucker and Bleil de Souza 2013 and further developed in detail in Tucker and Bleil de Souza 2014.

Presenting answers to these questions would involve developing a database/database management system to enable manual, semi-automatic and totally automatic searches in preferred combinations of the 6 aforementioned pairwise comparisons (Figure 8). The search would start by automatically identifying the ‘type of analysis’ in a question to eliminate all but one specific column from Table 4 (Comparison 1). Metrics and different types on interaction with data would eliminate most but a few fields in Table 5 (Comparison 2). The selection of metrics could be done in three different ways as, already outlined in section 3 and suggested in Figure 8. Types of interaction with data should be provided preferably at an overview level first (as suggested by Information Visualization literature and in interview with designers<sup>17</sup>). The selection of different types of zooms could either be done manually or automatically and the interface should allow both ways to happen.

Based on information from comparisons 1 and 2, preferred combinations of the remaining 4 pairwise comparisons could then be automatically identified. Results to be reported to designers would only include combinations which are marked as ‘preferred’ in *all* pairwise comparisons. Designers would be provided with a list of relevant displays to represent a selection of few metrics in specific types of interaction with data to choose how to best answer their design question. Additional information about manual, semi-automatic and automatic types of data selection illustrated in Figure 8 provide an extra filtering system to reduce the amount of choices to be presented to designers. The model should also enable combinations of different types of data selection to be customised (e.g. a practice could wish to always output an overview of the minimum rate of return on investment as the first metric to inform or assess design decisions). Customization could be set up by users and/or automated via the use of a Machine Learning system. Supervised learning could be used in this case to store and analyse user specific preferences, presenting a reduced number of visualization options every time a new query is made. The context of a question would need to be represented as a feature vector (e.g. encoding what kind of simulation the user has performed) together with a record what aspects of the output the user has previously wanted to see. These would enable the system to learn with the users what would be the most appropriate metrics and visualization options to each different type of query, potentially reaching a point in which choices are no longer presented if not specifically requested. The design and implementation of this supervised learning system and the development of this database/ database management system are again a problem of software implementation and beyond the scope of this study.

---

<sup>17</sup> See Bleil de Souza and Tucker 2014 for details on interviews with designers

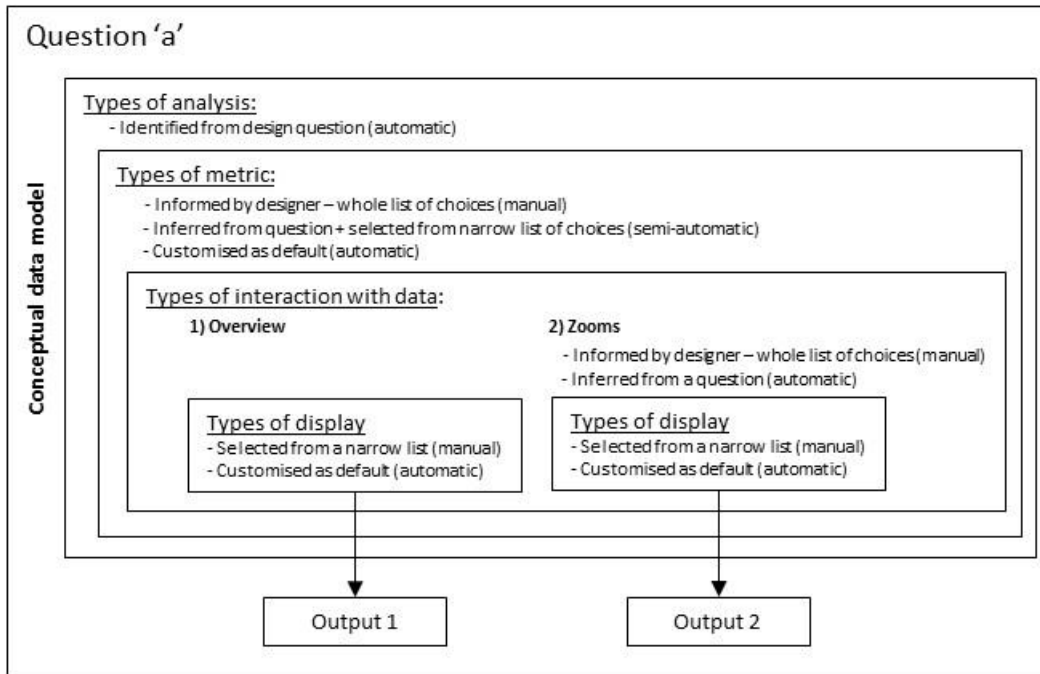


Figure 8 – Further filtering system applied to the conceptual data model.

## 6.2 Examples

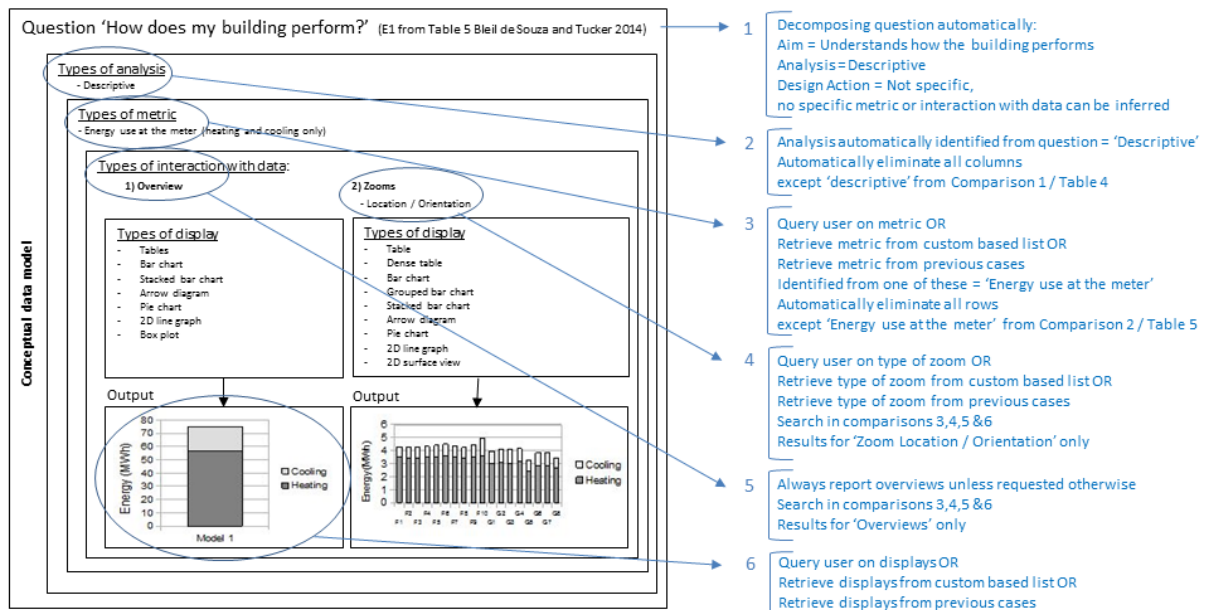


Figure 9 – Example 1 (explained): applications of the conceptual data model applications in practice.

Figure 9 shows an example of the conceptual data model application in practice. It shows a question detached from a specific context with 'answers' coming from preferred combination discussed in section 5. It provides a graphical explanation of the application of the model in practice together with a detailed list of procedures to be followed step-by-step, which start from how a question can be decomposed and finish with how the number of visualization options can be reduced. As it is not possible to infer which kind of metric or zoom users could potentially like to see in an 'answer' for this question, these would need to be manually informed by designers, retrieved from a custom based list or from previous cases. Lists of display choices would then be provided to enable the requested BPS output to be presented. The designers would then select the type of display (s)he is more comfortable dealing with. If a custom based system is in place, this part could be automated and a single

display or an extremely reduced list of displays could be presented. As it was already noted in section 3, ultimate display choices are a matter of personal preference.

Figure 10 illustrates an application of the conceptual data model when a question is attached to a very specific context: exploring the design of shading devices for a school building in the UK. As school buildings in the UK need to comply with BB101 overheating targets, simply comparing different design alternatives does not provide enough information for designers to make decisions. These comparisons are more meaningful if bounded by the targets. As BB101 specify allowable hours of overheating<sup>18</sup>, this metric could be automatically identified from the question whereas a second metric to assist in decision making could be provided by the designer or customized as default for school building assessment. Lists of displays choices would then be restricted to offer an ‘answer’ to these two questions simultaneously, as provided in example 2 (Figure 10). In this case the user has selected a zoom to individual classroom overheating using a metric of ‘hour > 28°C’. This example illustrates a case in which interpreting questions and setting up preferred combinations could be customized based on a specific building typology. As suggested in Section 3, customization could also be enabled in different practices depending on the types of contracts they undertake, specific ways they organise design teams, etc. such that questions that are often asked can be saved along with the preferred outputs and choices.

---

<sup>18</sup> BB101 specifies maximum environmental/operative temperatures allowed for schools in the UK: maximum of 120hs above 26°C, no hours above 32 °C and 0 hours where mean ‘ti’ - mean ‘to’ is greater than 5°C. Even though this metric is not directly listed in table 2 (section 4.2), this table is not supposed to be exhaustive. A series of metrics related to specific performance targets could be further included there to cover most of the current legislation and building regulations.

Question 'How do these buildings perform in relation to each other' AND  
'How does each building perform in relation to BB101?'

(E2 AND E1 (T) from Table 5 Bleil de Souza and Tucker 2014)

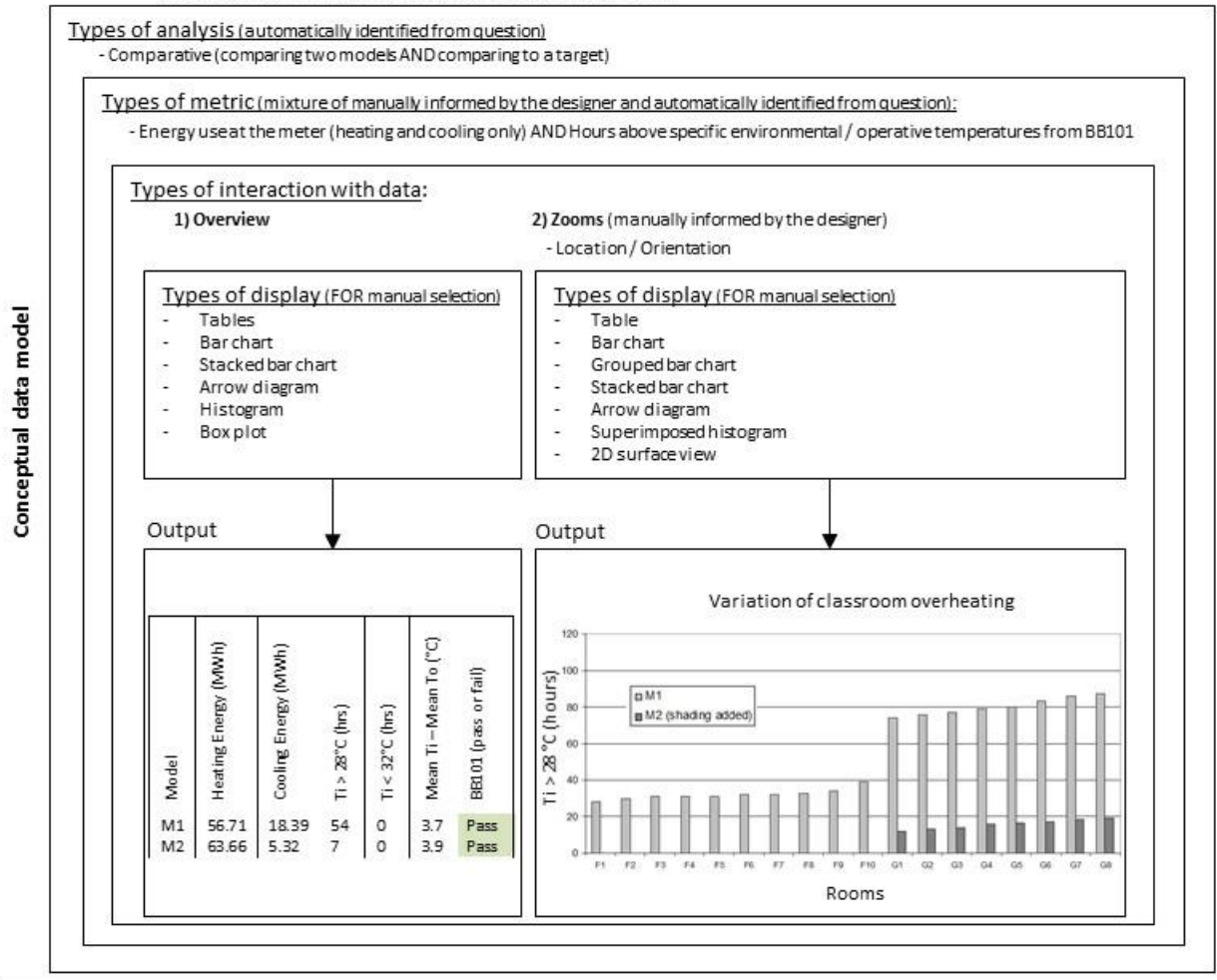


Figure 10 – Example 2: applications of the conceptual data model applications in practice.

Having simulation output data information meaningful to design decision making in a hierarchical data structure and within lists, facilitates choices and the retracing of previous steps in querying results. It also facilitates setting up interfaces in which users can customise their own preferences either through the use of supervised machine learning techniques and/or by manually saving them to be retrieved in different projects. The hierarchical structure also facilitates the request for 'details on demand' to be further explored through simultaneous and/or sequential zooms, as discussed in section 5.5.

Another feature of this model is that lists, especially list of metrics and list of displays, are not supposed to be exhaustive but to be constantly enriched by software developers based on further research and interactions with designers. New additions could vary from less conventional types of displays (kinematic, haptic, etc.) up to comprehensive metrics which could couple performance with other types building design metrics (e.g. proportion systems, ergonomics, rules of construction assemblage, etc.). Before release to the users, every new addition should be assessed in terms of preferred combinations as illustrated in this work.

## 7. CONCLUSIONS AND FUTURE WORK

This paper proposed a conceptual data model to present meaningful dynamic thermal simulation information for design decision making. It explained how the model was generated and how it could become operational, followed by examples of its applications to practical problems. Rather than following a conventional statistical



analysis on user preferences which would not cope with the idiosyncrasies of the design problems, different types of clients, different types of design practices, etc.; the authors proposed a totally custom-based approach.

In this approach, the first priority was to identify and make available a full and exhaustive range of meaningful simulation outputs for building designers, rather than having the software manufacturer decide for them on a reduced set of representations. Having this full range potentially available opens up the possibility of different designers / users being able to choose how they wish to analyse performance and view / interact with results.

This full range of possibilities was initially explored through a Thematic Analysis on building designers' work. Dynamic thermal modelling and Information Visualization principles were then applied to further organise simulation output information. A filtering system was added to reduce what could be a long list of output data. This filtering system started by analysing pairwise combinations of simulation output data to exclude those which are irrelevant or not allowed. A second layer of filtering is applied when designers ask a question from which aims, analysis processes and potentially design actions and metrics are extracted to narrow down the visualization choices once again.

A third layer of filtering is then to be applied by the user through one or more of the following options:

- (i) Enabling the manual selection of specific elements of the conceptual data model (e.g. the selection of a single metric) so that the list of visualization options can be narrower
- (ii) Enabling the designer, or his/her consultant, to select and save preferred outputs such that these are always made available when specific preferred combinations are selected (e.g. a practice could wish to always output an overview of the minimum rate of return on investment as the first metric to inform or assess any design decision)
- (iii) Enabling machine learning techniques to be implemented so that the database/database management system could learn from each user what are his/her preferred outputs. Supervised Learning could be used in this case to store and analyse user specific preferences, presenting a reduced number of visualization options every time a new query is made. The context of a question would need to be represented as a feature vector (e.g. encoding what kind of simulation the user has performed) together with a record what aspects of the output the user has previously wanted to see. These would enable the system to learn with the users what would be the most appropriate metrics and visualization options to each different type of query, potentially reaching a point in which choices are no longer presented if not specifically requested.

The number of choices can be therefore limited by each different user considering their specific needs, rather than by finding a stereotypical user and assuming what he/she wants. Possibilities of data display will always be reduced, depending on the question asked and if a customised and/or learning systems is in place. In case a learning system is in place, it is expected that options will reduce according to an increase in the number of queries. This is because, the larger the number of examples the system has stored, the more it can learn with them and reduce the number of display options presented to the user.

The model was validated and tested throughout its construction by using a set of different methodological approaches to extract concrete and relevant data for design decision making from designers themselves. Validation in this case happens in a different way and can be summarised by the three following stages / steps:

- Participatory Action Research (PAR): Contrarily to other methods, in which the researcher proposes a solution to a problem and test this solution with his/her potential beneficiaries, in PAR the beneficiaries themselves propose concrete solutions to their own problems. This being the case, testing what is proposed by beneficiaries with beneficiaries themselves becomes redundant, especially when the sample comprises more than a 100 participants.
- Elimination and filtering: Quality assurance in terms of the physics contained in the solutions produced by designers was guaranteed by checking proposals in terms of them fitting or violating dynamic thermal modelling principles. Solutions which violated these principles were eliminated and/or adapted to fit them.
- Pairwise comparisons: These comparisons were used to 'fine tune' quality assurance procedures by examining every combination of types of analysis, types of metrics, types of interaction with data and

types of data display in pairs. They were also used to manage information association and are a common procedure used to do internal validation of software development.

The need to organise and better present relevant thermal simulation outputs for design decision making is constantly highlighted in the literature but is expressed in practical terms in many software initiatives in a disarticulated and disjointed format. The conceptual data model is a meaningful resource for software developers to structure output interfaces because it deals with information *only*, independent of a specific database or database management system format. This gives developers freedom to choose how they wish to design a database/database management system which best fit their different software structures.

As it is totally custom-based, the conceptual data model proposed can be expanded and further developed to include different simulation software users as this could be easily managed in a database / database management system environment. A range of users could thus gain access to the power and accuracy of complex simulation tools, which thereby could facilitate the design of low energy and low carbon buildings.

This conceptual data model is not supposed to be directly accessed by building designers, i.e. it is not supposed to be a user friendly simulation output interface for building designers. It should be understood as a comprehensive structure for software developers to produce appropriate simulation output interfaces for design decision making. Future work should involve: (i) exploring appropriate database/ database management systems for implementation of the model; (ii) refine preferred combinations, metric and display instances in the model to include issues related to communicating information to clients, investors and passing information to the construction site; (iii) explore different types of user experiences in interacting with this type of data.

## 8. ACKNOWLEDGEMENT

The authors are grateful to ESRU research team (important collaborators in this project), especially Dr. Jon Hand, Dr. Paul Strachan and Prof. Joe Clarke for their important questions and support. The authors are also grateful to Dr. Steven Schockaert the insightful discussions about the computer science and software development/implementation side of this work. The reported work was funded by the Engineering and Physical Science Research Council UK (EPSRC - UK).

## 9. REFERENCES

- Akin, O. Variants in design cognition. In: Eastman, McCracken, Wendy and Newstetter, ed. Design Knowing and Learning: Cognition in Design Education. Atlanta: Elsevier (2001) 105-124.
- AutoDesk Ecotect 2014. AutoDesk Ecotect Analysis [online]. AutoDesk, USA. Available from: <http://usa.autodesk.com/ecotect-analysis/> [Accessed: Jan 2014].
- AutoDesk Revit 2014. AutoDesk Revit [online]. AutoDesk, USA. Available from: <http://www.autodesk.co.uk/products/autodesk-revit-family/overview/> [Accessed: Jan 2014].
- Bentley 2014. Microstation [online]. Available from: <http://www.bentley.com/en-gb/Products/MicroStation/> [Accessed: Jan 2014].
- Bleil de Souza, C. and Tucker, S. (2013). Thermal simulation software outputs: What do buildnig designers propose? *13th International Conference of the International Building Performance Simulation Association* (pp. 470-477). Chamebry: INES (CEA, University of Savoie, CNRS).
- Bleil de Souza, C. and Tucker, S. (2014). Thermal simulation software outputs: A Framework to produce meaningful information for design decision making. *Journal of Building Performance Simulation*. (in print). DOI: [10.1080/19401493.2013.872191](https://doi.org/10.1080/19401493.2013.872191)
- Brownlee, A., Wright, J. (2012) Solution analysis in multi-objective optimization. *Proceedings from the 1<sup>st</sup> Building Simulation and Optimization Conference*, (pp.317-324) Loughborough, UK.
- Bryman, A. (2008). *Social Research Methods*, . New York: Oxford University Press.

Card, S.K., Mackinlay, J.D., Shneiderman, B. (1999). *Readings in Information Visualization: Using Vision to Think*. Morgan Kaufmann Publishers Inc.

Chlela, F., Husaunndee, A., Inard, C., Riederer, P. (2009). A new methodology for the building of low energy buildings. *Energy and Buildings*, 41(7), 982–990.

Cooper, A., Reimann, R. and Cronin, D. (2007) *About Face 3: The Essentials of Interaction Design*, John Wiley & Sons.

David, H.A. (1988). *The Method of Paired Comparisons*. New York: Oxford University Press.

ESRU, ESP-r. (2013). *Energy System Research Unit - ESRU*. Retrieved from ESP-r: <http://www.esru.strath.ac.uk/Programs/ESP-r.htm> [Accessed: Oct 2013].

Evins, R., Knott, D., Pointer, P., Burgess, S., 2012. Visual data exploration in sustainable building design. *First Building Simulation and Optimization Conference*, Loughborough UK, 10-11 September 2012. pp 301-308

Franconi, E. (2011). Introducing a Framework for Advancing Building Energy Modelling Methods and Procedures. *Building Simulation 2011, 12th International IBPSA Conference*, (pp. K 8-K 15). Sydney Australia.

Graphisoft 2014. ArchiCAD Graphisoft [online]. Available from: <http://www.graphisoft.com/archicad/> [Accessed: Jan 2014].

IES (2014) Integrated Environmental Solutions. Retrieved from <http://www.iesve.com/> [Accessed Jan 2014]

Knight I, Marsh A, Bleil de Souza C – “*The AUDITAC Customer Advising Tool (CAT) Website and stand-alone software*”. Available at: [http://www.cardiff.ac.uk/archi/research/auditac/advice\\_tool.html](http://www.cardiff.ac.uk/archi/research/auditac/advice_tool.html). December 2006. European Commission Grant Agreement EIE/04/104/S07.38632. December 2006.

Knight I, Bleil de Souza C, Alexandre JL, Marsh A – “*The AUDITAC Customer Advising Tool (CAT) to assist the Inspection and Audit of Air Conditioning Systems in Buildings*”. Proceedings Clima 2007 Conference, Finland. June 2007. ISBN: 978-952-99898-2-9

Lawson, B. 1997. *How Designers Think: The Design Process Demystified*, 4th ed Architectural Press, Burlington, (1st edition 1980).

Mahdavi, A., Bachinger, J., Suter, G. (2005). Towards a unified information space for the specification of building performance simulation results. *Building Simulation '05, 9th International IBPSA Conference* (pp. 671–676). Montreal, Canada: Beausoleil-Morrison and Bernier ed.

Marsh, A. J., Haghparast, F. (2004). The application of computer-optimized solutions to tightly defined design problems. *21st Passive and Low Energy Architecture Conference (PLEA 2004)*. Eindhoven, Netherlands.

Marsh, A. J. (2005). A computational approach to regulatory compliance. Procedures. *Building Simulation 2005, 9th International IBPSA Conference*, (pp. 717-724). Montreal, Canada.

Mazza, R. (2009). *Introduction to Information Visualization*. London: Springer-Verlag London Ltd.

Nguyen, A.T, Reiter, S., Rigo, P. (2014) A review on simulation-based optimization methods applied to building performance analysis, *Applied Energy* 113 (2014) pp. 1043–1058.

NREL - National Renewable Energy Laboratory (2013, October 6). *Commercial Buildings Research and Software Development*. Retrieved from Open Studio: <http://openstudio.nrel.gov/>

Ochoa, C. E., Capeluto, I.G. . (2009). Advice for early design stages of intelligent facades based on energy and visual comfort. *Energy and Buildings*, 41(5), 480–488.

Papamichael, K. (1999a). Application of information technologies in building design decisions. *Building research and information*, 27, 20–34.

- Papamichael, K. (1999b). Product modeling for computer-aided decision-making. *Automation in Construction*, 8(3), 339–350.
- Papamichael, K., Chauvet, H., La Porta, J., Danbridge, R. (1999). Product modelling for computer-aided decision making. *Automation in Construction* 8 (3) 339-350.
- Petersen, S., Svendsen, S. (2012). Method and simulation program informed decisions in the early stages of building design. *Energy and Buildings*, 42(7), 1113–1119.
- Pratt, K. B., Bosworth, D. E. (2011). A method for the design and analysis of parametric building energy models. *Building Simulation '11, 12th International IBPSA Conference*, (pp. 2499–2506). Sydney, Australia.
- Prazeres, L., Clarke, J. (2005). Qualitative analysis on the usefulness of perceptualization techniques in communicating building simulation outputs. *Building Simulation '05, 9th International IBPSA Conference* (pp. 961–968). Montreal, Canada: Bernier, Beausoleil-Morrison (Eds.).
- Prazeres, L., J.A. Clarke, 2003. Communicating building simulation outputs to users. In: Augenbroe and Hensen, ed. *Building Simulation '03, 8th International IBPSA Conference*, Eindhoven, the Netherlands, August 11-14 2003,
- Prazeres, L.M.R. (2006) *An Exploratory Study about the Benefits of Targeted Data Perceptualisation Techniques and Rules in Building Simulation*, unpublished PhD, Energy Systems Research Unit, University of Strathclyde.
- Rogers, Y., Sharp, H. and Preece, J. (2011) *Interaction Design: Beyond Human-Computer Interaction*, John Wiley & Sons; 3rd Edition.
- Rowe, P. 1987. *Design Thinking*, The MIT Press, London.
- Schon, D. A. Problems, frames and perspectives on designing. *Design Studies*, 5 (3) (1984) 132-136
- Schon, D. A. 1988. Designing: rules, types and worlds, *Design Studies* 9 (3) 181–190.
- Schon, D. A. 1991. *The Reflective Practitioner: How Professionals Think in Action*, Ashgate Publishing Limited, UK (1st edition 1983).
- Schneiderman, B. (1996). The eyes have it: A task by data type taxonomy for information visualizations. *1996 IEEE Symposium on Visual Languages*, (pp. 336 - 343 ). Boulder, Colorado, USA.
- SERI – Solar Energy Research Institute (1985). *The design of energy-responsive commercial buildings*. USA: John Wiley and Sons Publication.
- Spence, R. (2007). *Information Visualization: Design for Interaction*. Prentice Hall.
- Soebarto, V. Williamson, T. (2001), Multi-criteria assessment of building performance: theory and implementation. *Building and Environment* 36 (6), 681-690.
- Spence, R. 2007. *Information Visualization: Design for Interaction*. Prentice Hall.
- Stravoravdis, S., Marsh, A. J. (2005). A proposed method for generating, storing and managing large amounts of modelling data using scripts and on-line databases. *Building Simulation '05, 9th International IBPSA Conference* (pp. 1185–1190). Montreal, Canada: Beausoleil-Morrison and Bernier ed.
- Struck, C., Bossart, R., Menti, Urs-Peter., Steiner, M. (2012) User–centric and contextualised communication of integrated system performance data, *BauSim 2012, Fourth German-Austrian IBPSA Conference*, Berlin University of the Arts.
- Turrin, M., von Buelow, P., Stouffs, R., (2011). Design explorations of performance driven geometry in architectural design using parametric modeling and genetic algorithms, *Advanced Engineering Informatics*, 25 (4), 656-675.

Tucker, S. Bleil de Souza, C. (2013). Thermal simulation software outputs: Patterns for decision making. *13th International Conference of the International Building Performance Simulation Association* (pp. 396-403). Chamebry: INES (CEA, University of Savoie, CNRS).

Tucker, S. Bleil de Souza, C. (2014). Thermal simulation software outputs: Patterns for design decision making. *Journal of Building Performance Simulation*. (in print) DOI: 10.1080/19401493.2014.991755

Tindale, A. (2013, October 6). *Design Builder*. Retrieved from Design Builder: <http://www.designbuilder.co.uk/>  
Waltz, J. P., 2000. *Computerized Building Energy Simulation Handbook*. Lilburn: The Fairmont press Inc.

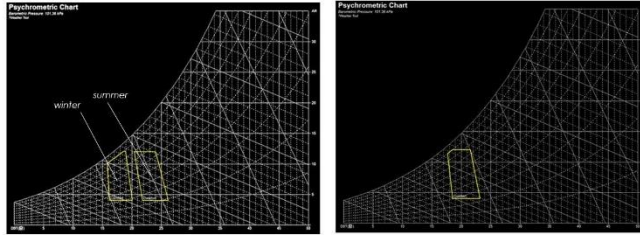
Ward, M., Grinstein, G., Keim, D. (2010). *Interactive Data Visualization: Foundations, Techniques and Applications*. A K Peters Ltd.

Annex 1 – A sample of a summary of one of the design journals from the data sample

## Weather Analysis

### Neutrality Temperature and Comfort Zone

Month	Tn	Ti	Tc
Jan	18.11	19.61	20.21
Feb	17.8	19.3	20.3
Mar	18.575	19.675	21.075
Apr	20.798	17.594	22.594
May	20.942	18.462	23.462
Jun	22.695	20.105	25.105
Jul	23.473	20.973	25.973
Aug	23.143	20.663	25.663
Sep	21.892	19.392	24.392
Oct	20.762	18.462	23.462
Nov	19.474	16.974	21.974
Dec	18.296	15.796	20.796



### Climate Classification

The climate in Zurich is classified as temperate, with slight characteristic of a cold climate.

- There is a seasonal variation between underheating and overheating, however the annual heating requirement is higher than the cooling requirement.

### Nature of Climate Problem

- At most of the time, there will be heat loss from the building to the surroundings. So there the inhabitants need to be kept warm.
- When the temperature reaches the extreme in summer, shading devices are needed to prevent overheating.
- Winter is more humid (humidifier needed) and summer is dryer (evaporative cooling is helpful)

### Targets for Passive and Active Scenario

#### Passive Scenario

Targets:  
 Temperature – around 15 C to 20 C in winter, 20 C to 25 C in summer  
 Humidity – around 50 to 80%  
 Minimum outside temperature that the passive heating will be able to offset neutrality temperature - at least 0 C., try to push as much as possible towards 5 C

#### Active Scenario

Targets:  
 Temperature, 21C, constant throughout the year  
 Humidity – 60%  
 Air movement – 0.25 to 0.75m/s, between pleasant and awareness of air movement.  
 Thermal Load - as low as possible, try to achieve 15kWh/m2 per annum (Passivhaus Standard)

## Internal Gains

### Annual Internal Heat Gain & Normalised Value

	Annual Heat Gain (kWh)	Normalised Annual Heat Gain (kWh/m2)	Speculative Annual Heat Gain (kWh/m2)
<b>Cellular Office</b>			
Partner's room 1	1975.609	71.9974254	50
Partner's room 2	1790.605	77.2618039	50
Receptionist's Office	1232.083	91.0690508	50
Manager's room 1	1934.785	72.7362782	50
Manager's room 2	1934.785	72.7362782	50
Marketing Office	2551.179	163.1188619	50
Accountant Office	1976.654	126.3845289	50
<b>Open Plan Office</b>			
Project Group 1	3996.607	120.6705012	50
Project Group 2	11426.739	100.289735	50
Project Group 3	6247.51	112.2643306	50
Project Group 4	10034.31	108.488203	50
<b>Meeting Room</b>			
15 people meeting room	704.649375	27.39161808	20
8 people meeting room	485.385	20.0572314	20
<b>Reception</b>			
Front Desk Main Reception	2124.389	116.4669552	30
Reception 1 (Partners' Secretary)	1328.248	97.0941205	30
Reception 2 (Managers' Secretary)	1071.64	127.5761905	30
<b>Common Area</b>			
Kitchenette + Staff Lounge	8846.04	361.0628571	20
Technical Library	1145.28	40.4408797	20
Balcony	449.6875	35.975	20
<b>IT Equipment</b>			
Photocopy and Printing Room	1556.162	196.485101	1000
<b>Circulation Area</b>			
Total Area	55287.089	50.5891788	27
<b>Total Annual Heat Gains</b>	77829.49588		

### Strategies for Passive Scenario



### Strategies for Active Scenario



## Aims of the Scenarios

#### Passive Scenario

- to achieve comfortable level as outlined earlier
- to minimise the temperature variation between different time throughout the day
- to prevent loss of internal heat gained to the surroundings as much as possible
- to prevent overheating on the south facade

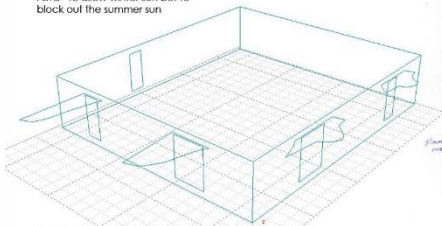
#### Active Scenario

- to achieve the targets as outlined earlier
- to control the internal temperature artificially
- to have a building envelope that allows the minimum use of thermal load as much as possible to meet the comfort requirement of the indoor environment
- to keep the heating and cooling load below the range in standards and regulations

## Shading Design

### Annual Internal Heat Gain & Normalised Value

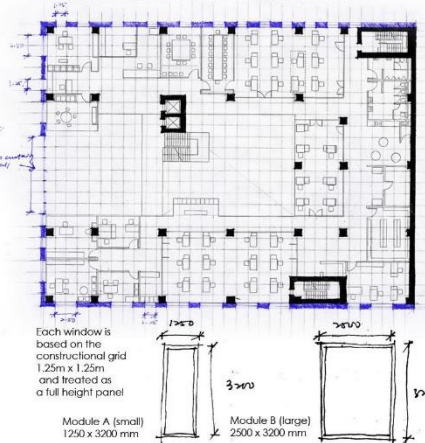
Aims - to allow winter sun but to block out the summer sun



Results - Big drop in summer G value

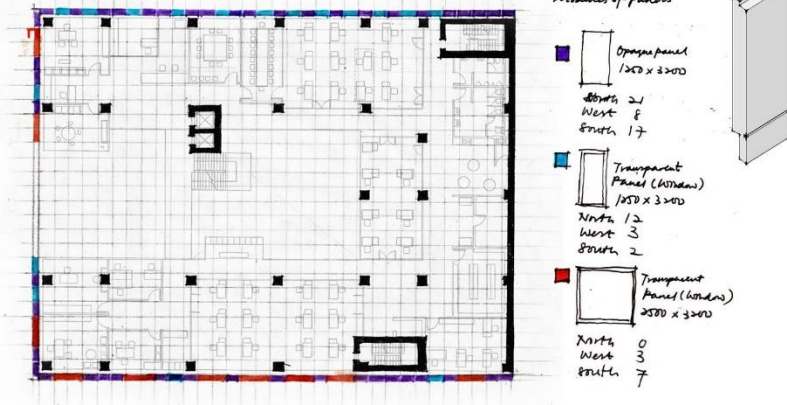
South Module A		South Module B		North Module A		North Module B	
INCIDENT	WH/m2	INCIDENT	WH/m2	INCIDENT	WH/m2	INCIDENT	WH/m2
Jan	776	Jan	798	Jan	398	Jan	291
Feb	1166	Feb	1117	Feb	497	Feb	458
Mar	1884	Mar	1847	Mar	917	Mar	639
Apr	3485	Apr	3313	Apr	1017	Apr	927
May	593	May	528	May	908	May	842
Jun	1045	Jun	983	Jun	1343	Jun	1095
Jul	1090	Jul	1030	Jul	1131	Jul	1102
Aug	1175	Aug	1084	Aug	884	Aug	831
Sep	1046	Sep	980	Sep	756	Sep	683
Oct	1222	Oct	1179	Oct	642	Oct	580
Nov	605	Nov	601	Nov	308	Nov	290
Dec	518	Dec	516	Dec	221	Dec	212

### Modules and Positions of Windows and Wall Panels



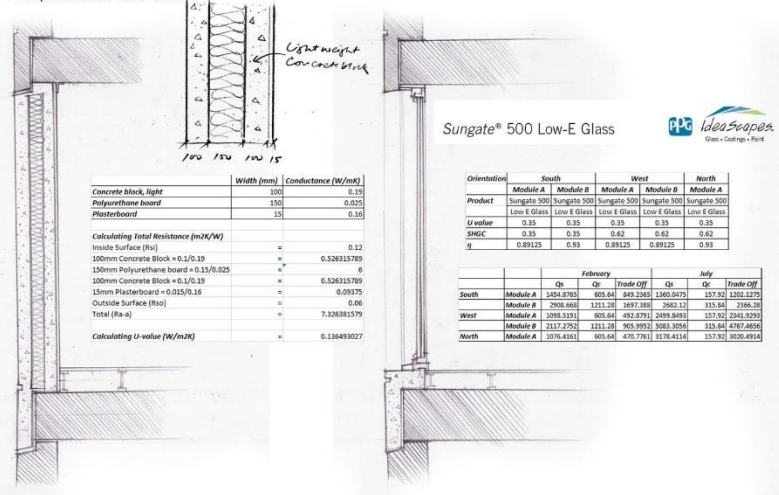
## Facade Modules

Distribution of Panels at different Orientations



## Passive Scenario

Compositions of the Panels



## Minimum Tout for Coldest Month

	Tout = 18 - (Q <sub>L</sub> + Q <sub>e</sub> - Q <sub>c</sub> ) / (q <sub>c</sub> + q <sub>w</sub> )	Month	Mean temp
Cellular Office		Jan	1
Partner's room 1	6.793396259	Feb	0
Partner's room 2	7.244792981	Mar	2.5
Receptionist's Office	5.428816871	Apr	7.4
Manager's room 1	7.850225432	May	10.2
Manager's room 2	5.452357534	Jun	15.5
Marketing Office	-5.337520223	Jul	18.3
Accountant Office	-1.094419379	Aug	17.3
Open Plan Office		Sep	13.2
Project Group 1	-0.219287331	Oct	10.2
Project Group 2	1.472812854	Nov	5.4
Project Group 3	1.796195512	Dec	1.6
Project Group 4	1.343781978		
Meeting Room			
15 people meeting room	13.49961755		
8 people meeting room	14.37530693		
Reception			
Front Desk Main Reception	1.662842193		
Reception 1 (Partners' Secretary)	4.234508992		
Reception 2 (Managers' Secretary)	1.429709107		
Common Area			
Kitchenette + Staff Lounge	7.247897904		
Technical Library	11.61731724		
Balcony	17.67895889		
IT Equipment			
Photocopy and Printing Room	2.734248658		
	5.31415697		

## Maximum Tout for Hottest Month

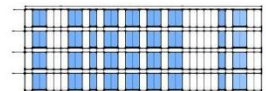
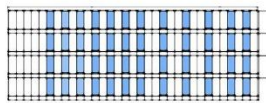
	Tout = 23 - (Q <sub>L</sub> + Q <sub>e</sub> - Q <sub>c</sub> ) / (q <sub>c</sub> + q <sub>w</sub> )	Month	Mean temp
Cellular Office		Jan	1
Partner's room 1	18.80708531	Feb	0
Partner's room 2	20.05507049	Mar	2.5
Receptionist's Office	19.3551009	Apr	7.4
Manager's room 1	20.25273927	May	10.2
Manager's room 2	19.53518093	Jun	15.5
Marketing Office	19.1104133	Jul	18.3
Accountant Office	18.903374	Aug	17.3
Open Plan Office		Sep	13.2
Project Group 1	19.3041054	Oct	10.2
Project Group 2	19.3023309	Nov	5.4
Project Group 3	20.29979159	Dec	1.6
Project Group 4	20.07868836		
Meeting Room			
15 people meeting room	21.62539686		
8 people meeting room	21.74109761		
Reception			
Front Desk Main Reception	19.05056026		
Reception 1 (Partners' Secretary)	19.33319959		
Reception 2 (Managers' Secretary)	18.21167738		
Common Area			
Kitchenette + Staff Lounge	18.69915916		
Technical Library	21.93621954		
Balcony	22.97986637		
IT Equipment			
Photocopy and Printing Room	17.9141622		
	19.86461452		

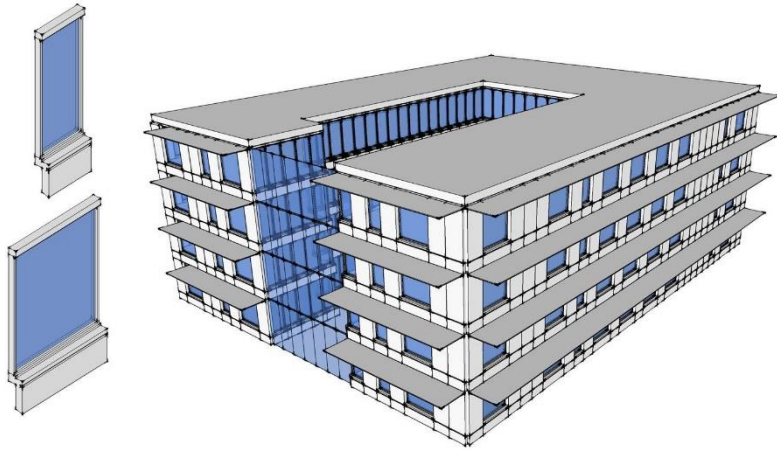
In this scenario, we do not take into account the mass effect of the concrete panel which also helps to transfer heat into building by conduction. The delay of this transfer also help to regulate the internal temperature at day and night, and thus may help to reduce the probability of overheating in the day, especially in summer.

Passive heating of the building can be improved by having a conservatories attached to the building, acting as a green house that collect heat for the building. Trombe wall may be useful as well but it will block out daylight, which is necessary for an office building. Hence it is not that appropriate for this task.

To further improve the facade so as to obtain a higher Tout for summer, evaporative cooling may be able to help achieving this. This can be done by having a roof pool or a courtyard pond in the atrium, or by spraying over the roof.

Increasing air movement in the building by cross ventilation and stack ventilation can also help to improve the passive cooling of the building. However, air movement to a certain can be very annoying and thus causes discomfort to the occupants.





Active Scenario  
Compositions of the Panels

	Width (mm)	Conductance (W/m <sup>2</sup> K)
External Rendering	3	0.15
Concrete block, light	130	0.15
Polyurethane board	130	0.025
Plasterboard	15	0.10

Calculating Total Resistance (m <sup>2</sup> K/W)	
Inside Surface (Rsi)	= 0.17
15mm Plasterboard = 0.015/0.16	= 0.09375
120mm Concrete Block + 0.12/0.19	= 0.63157947
150mm Polyurethane board = 0.15/0.025	= 6
120mm Concrete Block = 0.12/0.15	= 0.63157947
7mm External Rendering = 0.007/0.1	= 0.01
Outside Surface (Rso)	= 0.06
Total (R <sub>a</sub> )	= 7.546907855
Calculating U-value (W/m <sup>2</sup> K)	= 0.132504588

Orientation	South			West			North		
	Module A	Module B	Module A	Module B	Module A	Module B	Module A	Module B	Module A
Product	Sungate 500	Sungate 500	Sungate 500	Sungate 500	Sungate 500	Sungate 500	Sungate 500	Sungate 500	Sungate 500
	Low E Glass	Low E Glass	Low E Glass	Low E Glass	Low E Glass	Low E Glass	Low E Glass	Low E Glass	Low E Glass
U value	0.15	0.15	0.15	0.15	0.15	0.15	0.15	0.15	0.15
SHGC	0.2	0.2	0.2	0.2	0.2	0.2	0.2	0.2	0.2
g	0.89125	0.93	0.89125	0.89125	0.89125	0.89125	0.89125	0.89125	0.93

	February			July			
	Qr	Qc	Trade Off	Qr	Qc	Trade Off	
South	Module A	831.338	605.64	225.718	777.17	157.92	619.25
	Module B	1662.096	1211.28	450.816	1532.64	315.84	1216.8
West	Module A	254.361	605.94	251.279	606.403	157.92	646.403
	Module B	682.392	1211.28	238.380	1895.774	315.84	1323.936
North	Module A	347.231	605.64	258.409	1023.294	157.92	867.372

Sizing Cooling Peak Load		Sizing Heating Peak Load		Annual Heating Requirement		Annual Cooling Requirement	
	Qmax		Qmax		Qave-Qr-Qc		Qave-Qr-Qc
<b>Cellular Office</b>		<b>Cellular Office</b>		<b>Cellular Office</b>		<b>Cellular Office</b>	
Partner's room 1	1326.82204	Partner's room 1	1085.446	Partner's room 1	1989750.298	Partner's room 1	187494.6321
Partner's room 2	1521.295124	Partner's room 2	796.2693	Partner's room 2	1726028.25	Partner's room 2	1760116.391
Receptionist's Office	585.485786	Receptionist's Office	514.4066	Receptionist's Office	813466.5591	Receptionist's Office	676763.6225
Manager's room 1	1126.294963	Manager's room 1	898.0034	Manager's room 1	2055666.395	Manager's room 1	1704821.240
Manager's room 2	1260.15502	Manager's room 2	1189.693	Manager's room 2	1600218.933	Manager's room 2	2022868.115
Marketing Office	536.618386	Marketing Office	677.8826	Marketing Office	47976.8877	Marketing Office	1391066.486
Accountant Office	699.247079	Accountant Office	707.5059	Accountant Office	451434.0845	Accountant Office	1595811.701
<b>Open Plan Office</b>		<b>Open Plan Office</b>		<b>Open Plan Office</b>		<b>Open Plan Office</b>	
Project Group 1	1327.82200	Project Group 1	1349.197	Project Group 1	97363.1133	Project Group 1	294028.881
Project Group 2	4311.4867	Project Group 2	4678.455	Project Group 2	438203.555	Project Group 2	635494.521
Project Group 3	1848.98326	Project Group 3	1872.116	Project Group 3	249766.012	Project Group 3	300786.376
Project Group 4	3485.60926	Project Group 4	3243.411	Project Group 4	384746.255	Project Group 4	635768.385
<b>Meeting Room</b>		<b>Meeting Room</b>		<b>Meeting Room</b>		<b>Meeting Room</b>	
15 people meeting room	956.919051	15 people meeting room	560.7137	15 people meeting room	2161460.726	15 people meeting room	640447.7266
8 people meeting room	956.919051	8 people meeting room	540.6232	8 people meeting room	209544.613	8 people meeting room	525112.363
<b>Reception</b>		<b>Reception</b>		<b>Reception</b>		<b>Reception</b>	
Front Desk Main Reception	713.116382	Reception	715.1428	Reception	765517.2342	Reception	1332413.246
Reception 1 (Partner's Secretary)	562.396773	Reception 1 (Partner's Secretary)	495.2202	Reception 1 (Partner's Secretary)	749494.01	Reception 1 (Partner's Secretary)	697663.0895
Reception 2 (Managers' Secretary)	394.232335	Reception 2 (Managers' Secretary)	380.3035	Reception 2 (Managers' Secretary)	397147.4356	Reception 2 (Managers' Secretary)	787635.8387
<b>Common Area</b>		<b>Common Area</b>		<b>Common Area</b>		<b>Common Area</b>	
Kitchenette + Staff Lounge	9165.672	Kitchenette + Staff Lounge	2895.076	Kitchenette + Staff Lounge	6728458.3	Kitchenette + Staff Lounge	4709052.4
Technical Library	931.181794	Technical Library	294.8099	Technical Library	202099.884	Technical Library	630689.5128
Balcony	466.16	Balcony	314.8346	Balcony	1504517.45	Balcony	845556.95
<b>IT Equipment</b>		<b>IT Equipment</b>		<b>IT Equipment</b>		<b>IT Equipment</b>	
Photocopy and Printing Room	705.156698	Photocopy and Printing Room	481.1859	Photocopy and Printing Room	663973.4832	Photocopy and Printing Room	615131.9096
<b>Total</b>	<b>29771.3453</b>	<b>Total</b>	<b>75133.27</b>	<b>Total Heating Requirement (kWh)</b>	<b>80768210.94</b>	<b>Total Cooling Requirement (kWh)</b>	<b>44914121.21</b>
	<b>(kWh/h) 26.713489</b>		<b>(kWh/h) 21.18122</b>	<b>Total Heating Requirement (kW/h)</b>	<b>38068.76094</b>	<b>Total Cooling Requirement (kW/h)</b>	<b>45974.17815</b>
				<b>Total Floor Area (m<sup>2</sup>)</b>	<b>806.465</b>	<b>Total Floor Area (m<sup>2</sup>)</b>	<b>696.465</b>
				<b>sizing Requirement per area (kWh/m<sup>2</sup>)</b>	<b>61.71704671</b>	<b>sizing Requirement per area (kWh/m<sup>2</sup>)</b>	<b>72.50905660</b>

Conclusion

In this scenario, the annual heating requirement is within the "good practice" range but cooling requirement is far above the reference value in the ECEN 19 guide.

Changes have been made to the composition of the wall and window panels. Some adjustments are done to the internal gain and ventilation heat transfer to obtain a more accurate value.

As mentioned earlier, the main contributor to such an extremely high value for cooling requirement is Q<sub>c</sub>. To improve the results, the planning of the layout of the office building needs to be reorganised and reassess the estimation of the schedule of the working hour.

The proposal for the passive scenario is quite successful as a whole, achieving average T<sub>out</sub> as low as 5.4 C for passive heating and 19.8 C for passive cooling. However, the proposal for the active scenario is not as successful as the passive one, as the building is overinsulated, and thus has a higher cooling demand than heating demand annually.

To achieve an optimum comfort level for the office building, the integration of both is needed to push the performance of the building closer to the acceptable range of comfort. The passive proposal needs some kind of HVAC system during extreme weather to offset any heat gain or heat loss. As for the active proposal, there is a need to have passive solar heating to help to reduce the thermal load needed to achieve comfort level.

Also, the atrium and mass effect need to be assessed using computer simulation to obtain a more accurate results for both design.