

Kent Academic Repository

Full text document (pdf)

Citation for published version

Armstrong, Alexander, McCoy, Thomas, Welbourn, Rebecca J.L., Barker, Robert D, Rawle, Jonathan L., Cattoz, Beatrice, Dowding, Peter and Routh, Alexander F. (2021) Towards a neutron and X-ray reflectometry environment for the study of solid-liquid interfaces under shear. *Scientific Reports* . ISSN 2045-2322. (In press)

DOI

Link to record in KAR

<https://kar.kent.ac.uk/87664/>

Document Version

Author's Accepted Manuscript

Copyright & reuse

Content in the Kent Academic Repository is made available for research purposes. Unless otherwise stated all content is protected by copyright and in the absence of an open licence (eg Creative Commons), permissions for further reuse of content should be sought from the publisher, author or other copyright holder.

Versions of research

The version in the Kent Academic Repository may differ from the final published version.

Users are advised to check <http://kar.kent.ac.uk> for the status of the paper. **Users should always cite the published version of record.**

Enquiries

For any further enquiries regarding the licence status of this document, please contact:

researchsupport@kent.ac.uk

If you believe this document infringes copyright then please contact the KAR admin team with the take-down information provided at <http://kar.kent.ac.uk/contact.html>

Towards a neutron and X-ray reflectometry environment for the study of solid-liquid interfaces under shear

Alexander J. Armstrong¹, Thomas M. McCoy¹, Rebecca J. L. Welbourn²,
Robert Barker³, Jonathan L. Rawle⁴, Beatrice Cattoz⁵, Peter J. Dowding⁵,
and Alexander F. Routh^{1, *}

¹*BP Institute and Department of Chemical Engineering and Biotechnology,
University of Cambridge, UK*

²*ISIS Neutron and Muon Source, Didcot, UK*

³*School of Physical Sciences, Ingram Building, University of Kent,
Canterbury, UK*

⁴*Diamond Light Source Ltd, Diamond House, Harwell Campus, Didcot, OX11
0DE, UK*

⁵*Infineum UK Ltd, Milton Hill, UK*

*Correspondence to afr10@cam.ac.uk

March 21, 2021

Abstract

A novel neutron and X-ray reflectometry sample environment is presented for the study

of surface-active molecules at solid-liquid interfaces under shear. Neutron reflectometry was successfully used to characterise the iron oxide-dodecane interface at a shear rate of $7.0 \times 10^2 \text{ s}^{-1}$ using a combination of conventional reflectometry theory coupled with the summation of reflected intensities to describe reflectivity from thicker films. Additionally, the structure adopted by glycerol monooleate (GMO), an Organic Friction Modifier, when adsorbed at the iron oxide-dodecane interface at a shear rate of $7.0 \times 10^2 \text{ s}^{-1}$ was studied. It was found that GMO forms a surface layer that appears unaltered by the effect of shear, where the thickness of the GMO layer was found to be $24.3_{-10.2}^{+9.9} \text{ \AA}$ under direct shear at $7.0 \times 10^2 \text{ s}^{-1}$ and $25.8_{-5.2}^{+4.4} \text{ \AA}$ when not directly under shear. Finally, a model to analyse X-ray reflectometry data collected with the sample environment is also described and applied to data collected at $3.0 \times 10^3 \text{ s}^{-1}$.

Introduction

The behaviour of surface-active molecules (surfactants) at solid-liquid interfaces is of key importance to applications such as detergency, froth flotation and lubrication. In such processes adsorbed additives are subject to shear from the surrounding fluid, where the shear rate dictates the extent to which adsorbate molecules are perturbed from their adsorbed structure under static conditions. Shear rates across these example applications are estimated to vary between 10^2 – 10^8 s^{-1} .^{1,2}

Organic Friction Modifiers (OFMs) are surfactants included in engine oil formulations to reduce frictional losses in high-pressure tribological contacts that arise between mechanical engine components. The conventional understanding is that OFMs adsorb at metallic engine surfaces through the interaction of the polar head group with the hydrophilic engine surface while the hydrophobic alkyl chain extends into the bulk hydrocarbon solvent. Compact surface layers are formed as a result of van der Waals attractions between adjacent molecules. When layers on opposing moving surfaces are brought into contact, slip-planes are formed that reduce the frictional force.³ This mechanistic understanding has been developed over the 20th century where the majority of researchers used tribometer friction tests and adsorption studies.^{4–8}

More recent studies have used scanning probe microscopy and surface-force apparatus to study the structure and nanotribology of surface films.^{9–11} Results from atomic force microscopy suggest OFMs self-assemble at steel-hydrocarbon interfaces, forming monolayer surface films.^{12–14} Specialised tribometers equipped with interferometric microscopes have been used to characterise the *in-situ* formation of OFM monolayer films in tribological contacts.¹⁵ However, these experiments have also revealed film thicknesses beyond monolayer length scales for self-assembled fatty acids at steel surfaces.^{16,17} Furthermore, it has been shown that fatty acids dispersed in organic solvent with trace amounts of water can form films thicker than monolayers at steel surfaces.¹⁸ Findings such as these indicate that friction-reducing film structures are not limited to monolayers and indeed, the suggestion of thicker boundary films has been debated previously.¹⁹ Whilst it is established that deposited monolayer structures can reduce friction between flat surfaces²⁰, there is less evidence to suggest that self-assembled OFM interfacial structures are monolayers. The fundamental mechanism behind friction modification can be elucidated by understanding how OFMs self-assemble at interfaces and how their surface structure varies with applied tribological conditions.

The experimental determination of *in-situ* OFM friction-reducing surface structures is difficult as it requires the combination of a surface-specific technique with the harsh conditions applied within an engine. A major challenge in the development of such equipment is ensuring the detecting technique can probe the buried interface without perturbation and without significant interference from operating under tribological conditions. In this regard two candidate techniques are specular neutron and X-ray reflectometry (NR and XRR) which have been used to study the shear-dependent behaviour of molecules at solid-liquid interfaces.^{21,22} While both are scattering methodologies that can measure the thicknesses and atomic densities of thin films perpendicular to an interface, there are some distinct differences between the two techniques. NR typically requires a greater sample area compared to XRR because the flux of neutron sources is lower than those available at X-ray synchrotrons. Despite this, NR is generally preferred for the study of buried solid-liquid interfaces as the penetration depth of neutrons is significantly greater. NR is further suited for the study of light-mass elements, especially hydrogen, found in most organic molecules, while XRR is more sensitive to heavier, electron-rich

elements. Consequently, NR has been favoured for the study of polymers and surfactants at solid-liquid interfaces.²³

Developments in NR sample environments have enabled the study of organic media at solid-liquid interfaces under various shear conditions. Perhaps the most user-friendly are closed-loop flow cells, which have been used to study surfactant shear-induced behaviour at the Si-water interface under laminar flow conditions.^{24,25} Whilst shear rates have been reported to reach up to $5.5 \times 10^4 \text{ s}^{-1}$ in Poiseuille shear cells²⁶, it is difficult to control the range of accessible shear rates and it is not possible to study the elastic and loss shear moduli of adsorbed samples. Cone and plate rheometers have been fitted onto NR environments to accommodate these needs, enabling the application of oscillatory and steady shear to solid-liquid interfaces.^{27,28}

Confinement cells have also been developed to study how adsorbate structure changes with applied pressure. Here, the main principle is to move a surface towards the interface of interest and to apply a pressure. This has been achieved by either the actuation of a solid surface towards the interface of interest or by the expansion of an inflatable elastic material against the interface.²⁹⁻³¹ While the former technique is complicated in terms of ensuring both surfaces remain parallel over the areas required for NR, shear is perhaps more trivial to apply at the interface with this type of confinement. Steady shear rates of up to 20 s^{-1} and oscillatory shear rates up to 10^4 s^{-1} are reportedly possible in confinement cells.³² By increasing either the flow rate or the surface velocity within a confinement cell it becomes possible to probe the interface at greater shear rates than previously achieved. This would enable the study of adsorbates under conditions more relevant to those found within tribological contacts.

In this paper a novel sample environment, referred to as the tribometer, is presented for the study of surface-active species under shear with NR and XRR. Initially, a model to describe the neutron reflectivity from an iron-coated silicon substrate with neat dodecane-d₂₆ entrained against the substrate surface is presented and discussed. NR is then used to characterise the self-assembled structure of glycerol monooleate (GMO), an industrially relevant OFM, adsorbed from solution at the iron oxide-dodecane interface at $7.0 \times 10^2 \text{ s}^{-1}$. The molecular structure of

GMO is shown in Figure 1. Finally, XRR data collected with a 20 mM GMO-dodecane solution entrained against an iron-coated silicon substrate at a shear rate of $3.0 \times 10^3 \text{ s}^{-1}$ is presented and analysed using a conventional slab model.

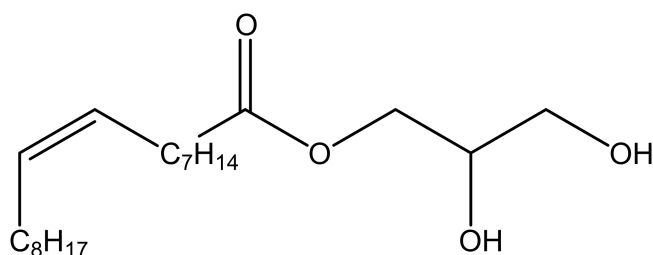


Figure 1. The molecular structure of glycerol monooleate (GMO).

Apparatus

The tribometer, Figure 2, was commissioned by Infineum UK Ltd and was manufactured by Cambridge Reactor Design, UK. It was designed to fit on both the INTER NR instrument at ISIS, UK and the FIGARO NR instrument at the Institut Laue-Langevin, France. It was also designed to fit on the I07 X-ray diffraction instrument at Diamond Light Source, UK.

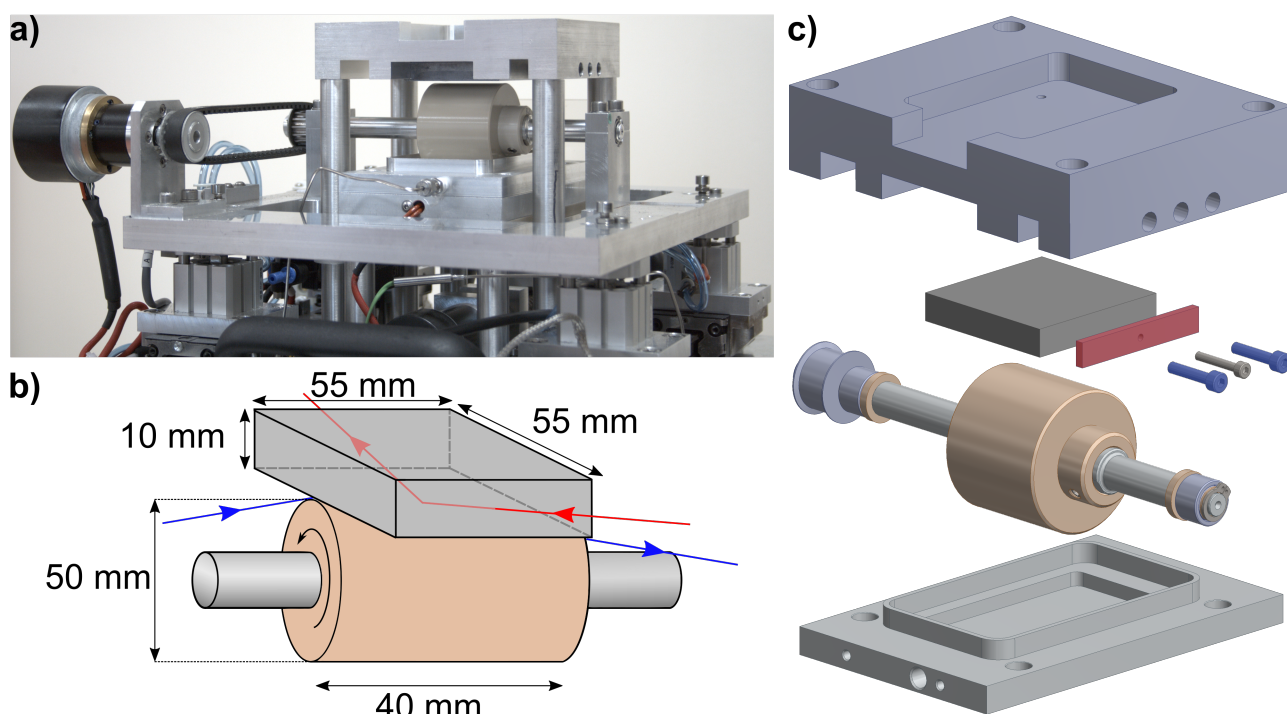


Figure 2. Visual overview of the tribometer. (a) Diagonal view of the tribometer in the lowered position. (b) A schematic of the roller and substrate at the centre of the tribometer. The red and blue arrows depict the approximate paths for the neutron and X-ray beams respectively. (c) Exploded view of the centre of the tribometer. The two screws in the head unit force the gib strip against the substrate, securing it above the roller.

At the centre of the tribometer an aluminium shaft holds a polyether ether ketone (PEEK) roller partially submerged in an oil bath. Using a belt transmission system, the roller can be rotated with surface velocities between $1.4\text{--}7.2 \times 10^{-1} \text{ m s}^{-1}$. A $55 \times 55 \times 10$ ($l \times w \times h$) mm substrate can be secured above the roller in a housing using two screws and a gib plate. The roller and motor sit on a rectangular aluminium plate that can be raised to either create a loaded contact or to form a specific gap between the roller and substrate. The former is facilitated by four pneumatic actuators that push the assembly plate upwards, producing a loaded contact between the roller and the substrate. The actuators are operated using compressed gas regulated between 0.3 bar and 4 bar, enabling varying loads through the contact of up to 120 N. Alternatively, the roller can be raised to a specific distance from the substrate by tightening four screws on the assembly plate. Using two laser displacement sensors (micro-epsilon ILD 1420s) the roller-substrate gap can be calibrated with micrometer precision. A second motor drives the aluminium plate along two parallel rails, allowing the reciprocation of the roller over 34 mm of the substrate's surface at speeds up to $1.8 \times 10^{-3} \text{ m s}^{-1}$. At the end of each reciprocating stroke the rotation of the roller is reversed to match the direction of horizontal travel. The oil bath and substrate holder can be held at temperatures up to 120 °C. All the operating electronics are controlled via a Eurotherm Mini8 controller. Schematics depicting the sample environment provided by the tribometer for NR and XRR are shown in Figure 3a and Figure 3b respectively.

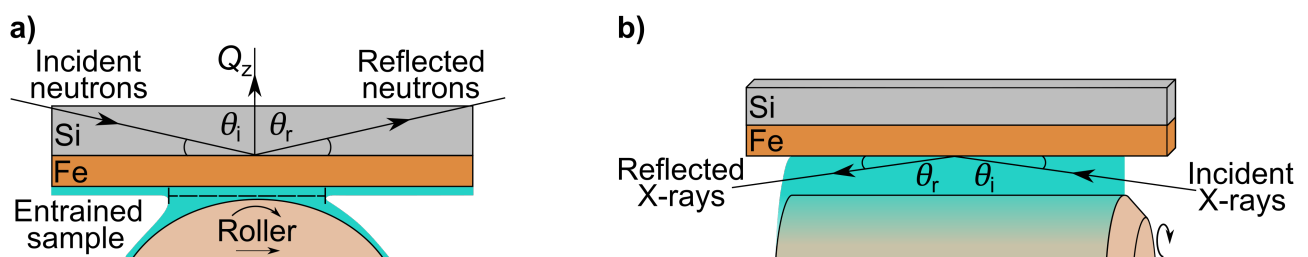


Figure 3. Principal of NR and XRR techniques with tribometer. (a) Schematic of NR setup with tribometer. In specular reflection the beam is reflected from the horizontal at an angle θ_r , where $\theta_r = \theta_i$. The incident neutron beam illuminates an area that is greater than the meniscus region above the roller. The meniscus held above the roller is outlined by the dashed bracket in the schematic. (b) Schematic of XRR setup with tribometer. The incident X-ray beam strikes the horizontal dodecane-substrate interface at θ_i .

Results

Neutron reflectometry

Operation

Iron-coated silicon substrates were loaded into the tribometer, and the roller-substrate gap was calibrated at 200 μm . The sample solutions were then entrained onto the substrate at one of two maximum shear rates: $7.0 \times 10^2 \text{ s}^{-1}$ and $3.7 \times 10^3 \text{ s}^{-1}$. The shear rates are calculated as the ratio of the roller surface velocity to the minimum roller-gap separation. The neutron beam was then aligned at the substrate-dodecane interface. Following this, the reflected intensity of neutrons was measured for at least 1.25 hours. The minimum widths of the resulting menisci held between the roller and the substrate were measured post-experiment via calibrated photography; the widths were found to be 11.5 mm and 20.0 mm in the direction of the beam at $7.0 \times 10^2 \text{ s}^{-1}$ and $3.7 \times 10^3 \text{ s}^{-1}$ respectively. The greater meniscus width at the higher shear rate can be considered a result of increasing the angular velocity of the roller, since increasing the roller horizontal velocity had a negligible effect on the meniscus width. The region held outside of the meniscus remained visibly wetted by the solution.

Iron oxide-dodecane interface

The tribometer was loaded with dodecane-d₂₆ which was entrained against the substrate at two maximum shear rates of $7.0 \times 10^2 \text{ s}^{-1}$ and $3.7 \times 10^3 \text{ s}^{-1}$ using roller horizontal velocities of $1.1 \times 10^{-3} \text{ m s}^{-1}$ and $1.8 \times 10^{-3} \text{ m s}^{-1}$ and surface velocities of $1.4 \times 10^{-1} \text{ m s}^{-1}$ and $7.2 \times 10^{-1} \text{ m s}^{-1}$ respectively. The NR profiles are shown in Figure 4. The critical edge is located at $Q = 0.0144 \text{ \AA}^{-1}$ for both profiles, corresponding to approximately 96 % solvent deuteration. The total reflection observed at $Q < 0.0144 \text{ \AA}^{-1}$ suggests that dodecane-d₂₆ completely wets the area illuminated by the neutron beam as any area within the footprint that remained dry during the experiment would contribute a non-zero gradient to the region of total reflection.

When comparing the data collected at 0.7° and 2.3° there is a clear difference between the first fringe minimum at $Q \approx 0.04 \text{ \AA}^{-1}$ at $7.0 \times 10^2 \text{ s}^{-1}$, which is not reproduced at $3.7 \times 10^3 \text{ s}^{-1}$.

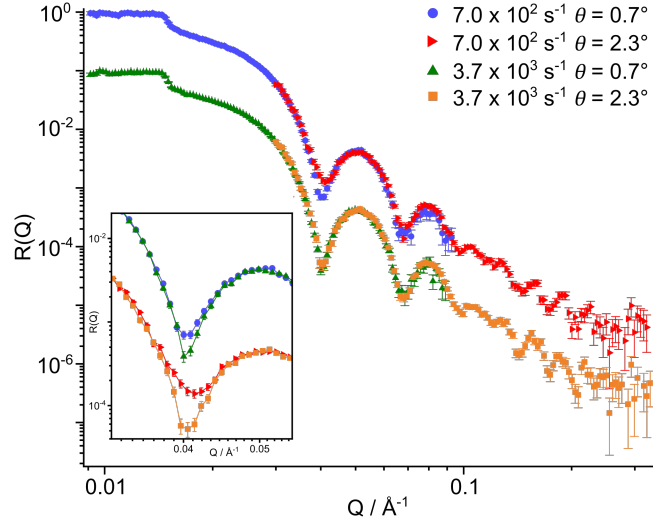


Figure 4. NR data for dodecane-d₂₆ entrained against an iron-coated silicon substrate at $7.0 \times 10^2 \text{ s}^{-1}$ and $3.7 \times 10^3 \text{ s}^{-1}$. The data collected at $3.7 \times 10^3 \text{ s}^{-1}$ are offset by 10^{-1} in the vertical axis. The insert compares the two shear rates for each angle, where the data collected at $\theta = 2.3^\circ$ are offset by 10^{-1} in the vertical axis. The lines between data points in the insert are linear interpolation lines to guide the eye.

As the footprint of the beam along the interface is greater than the width of the meniscus at both shear rates, the measured reflectivity is expected to contain a fractional contribution from the interface that is not contained in the meniscus. The total reflectivity, R_{tot} , can be modelled using Equation 1.

$$R_{\text{tot}} = R_{\text{S}} \times \bar{\gamma} + R_{\text{NS}} \times (1 - \bar{\gamma}) \quad (1)$$

Here, R_{tot} is the weighted linear combination of reflectivity arising from the region held within the meniscus, R_{S} , and the region held outside of the meniscus, R_{NS} . The weighting factor, $\bar{\gamma}$, is calculated as the average of the shear fraction, γ , which is the ratio of the meniscus width within the footprint to the total footprint of the beam, weighted by the relative intensity of the footprint. This is further detailed in the Supporting Information.

Both the R_{NS} and R_{S} terms account for reflectivity from the immediate Si interface which includes the sputtered and adsorbed thin films. However, R_{NS} contains a further reflectivity contribution which results from neutrons propagating over the dodecane film that wets the substrate when not held in the meniscus. Upon reaching the dodecane-air interface, the neutrons are either reflected towards the detector or transmitted into air. Reflection over thicker

films on micrometer length scales have been reported previously, and this process is depicted in Figure 5a.^{33,34} The total reflectivity for the non-sheared portion of the interface is given in Equation 2.

$$R_{\text{NS}} = R_1 + \frac{(1 - R_1)^2 R_2 e^{-\mu L}}{1 - R_1 R_2 e^{-\mu L}} \quad (2)$$

Here, R_1 is the reflectivity from the immediate Si interface, R_2 is the reflectivity from the dodecane-air interface and μ is the wavelength-dependant neutron attenuation coefficient in dodecane which is shown in the Supporting Information. The neutron path length within the dodecane layer, L , is defined as $L = 2d/\sin \theta_t$, where θ_t and d are the angle of transmittance and the film thickness of the dodecane layer respectively. Equation 2 accounts for multiple reflections across the thick dodecane film and any resulting attenuation of the neutron beam over this layer. The reflected intensity measured from the sheared portion of the interface, R_S , is assumed to arise solely from the immediate interface. It is not expected that significant reflection occurs in the specular direction from the dodecane-PEEK interface due to the angle of reflection adopted when striking the roller. Additionally, the roller has an RMS roughness of 1.5 μm which will diminish the intensity of specular reflection from the roller.

The model defined above was coupled with a conventional multilayer slab model to describe the reflectivity from the thin films present on the substrate surface. Further information on the parameters that describe the layers and the parameter bounds can be found in the Supporting Information. The best fit to the data collected at $7.0 \times 10^2 \text{ s}^{-1}$ is shown by the dashed lines in Figure 5b. The thickness of the residual dodecane layer which remains on the substrate when not sheared was fit with values of $112_{-23}^{+85} \mu\text{m}$. The distributions of the layer parameters are shown in Table 1.

For an acceptable fit, it was necessary to model an additional layer at the iron oxide-dodecane interface, referred to as the ‘Adventitious Layer’. Comparable films have been reported in other NR studies at interfaces with high and low interfacial energies, which are postulated to arise from fluid density depletion and/or gas present at the interface.^{35–38} It has also been

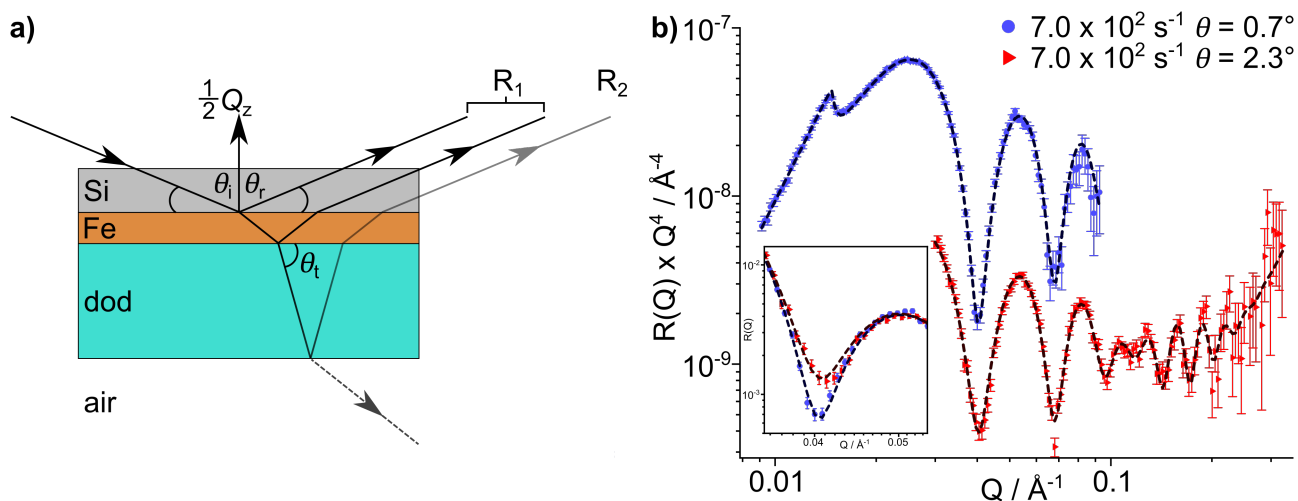


Figure 5. Depiction of reflectivity arising from the non-sheared portion of the interface and the best fit to the NR data collected with dodecane- d_{26} at $7.0 \times 10^2 \text{ s}^{-1}$. (a) Schematic of thick film reflectivity. R_1 is the reflectivity term that accounts for reflection from the immediate Si interface. Neutrons transmitted over the immediate interface will propagate through dodecane at an angle θ_t before being either reflected or transmitted at the dodecane-air interface. R_2 is the reflectivity term that accounts for reflection from the dodecane-air interface. (b) The best fit, shown by dashed lines, to the NR data collected with dodecane- d_{26} entrained against an iron-coated silicon substrate at $7.0 \times 10^2 \text{ s}^{-1}$. The reflectivity has been modified by a Q^4 factor to aid comparison. The data collected at $\theta = 2.3^\circ$ is offset by 10^{-1} in the vertical axis. The insert shows the unadjusted reflectivity at the first fringe minimum.

suggested that impurities within solvents and solutes could form similar layers at solid-liquid interfaces.^{39,40} Possible contaminants at the iron oxide-dodecane interface are suggested to be gaseous molecules introduced from the atmosphere or polar contaminants that are native within the solvent, such as ambient dissolved water. Complementary data for the iron oxide-dodecane interface, which was collected using solid-liquid cells under static conditions, was also found to be best represented by the inclusion of an adventitious layer as shown in the Supporting Information. Modelling the data without the adventitious layer resulted in a poorer fit.

To account for possible variation in the adsorbed structure under the two flow environments, separate adventitious layers were modelled for the R_S and R_{NS} contributions which represent the average surface layer structure whilst sheared and non-sheared. If the adventitious layer is composed of adsorbed gaseous species or water as discussed above, the fitted thicknesses suggest possible multilayering of the adsorbate while static and under shear. Furthermore, if the material adsorbed at the interface is comprised of organic elements such as C, H, N and O, the fitted nuclear scattering length densities, SLD_n , of the adventitious layer indicates that

Table 1. Fitted layer parameters for dodecane-d₂₆ entrained against an iron-coated silicon substrate at $7.0 \times 10^2 \text{ s}^{-1}$. The central parameter values are the median values obtained from the bootstrap routine, with the 95 % confidence intervals reported in the sub- and superscripts. Those values without uncertainties were held constant. * – parameters used to model the sheared layer. † – parameters used to model the non-sheared layer.

Layer	SLD _n / $\text{\AA}^{-2} \times 10^{-6}$	SLD _m / $\text{\AA}^{-2} \times 10^{-6}$	Thickness / \AA	Roughness / \AA
Si	2.07	-	∞	3.0
SiO ₂	3.47	-	$6.4_{-5.4}^{+6.5}$	$4.9_{-1.4}^{+1.3}$
Fe	$7.7_{-0.1}^{+0.1}$	$4.7_{-0.1}^{+0.1}$	$18.6_{-0.2}^{+0.2} \times 10^1$	$5.3_{-2.6}^{+2.9}$
FeO _x	$6.1_{-0.7}^{+0.5}$	$1.3_{-0.7}^{+0.0}$	$32.6_{-4.5}^{+4.6}$	$8.6_{-4.5}^{+3.6}$
*Adv. Lay.	$1.4_{-1.9}^{+3.9}$	-	$16.3_{-12.3}^{+12.3}$	$7.5_{-4.1}^{+5.5}$
†Adv. Lay.	$1.6_{-2.2}^{+3.1}$	-	$12.8_{-6.3}^{+13.2}$	$7.7_{-4.1}^{+5.0}$

these layers are solvated. An example structure that would fit this description are island-like assemblies of adsorbed material across the interface, with solvent occupying regions between the adsorbate.

The parameter values and uncertainties for the sheared and non-sheared adventitious layers are similar with wide uncertainties. Consequently, the effects of shear on the structure of the adventitious layer are not clear. A possible factor contributing to the wide uncertainties is correlation between layer parameters. Another factor could be the effect of shear itself; for example, the confidence intervals for the sheared layer parameters are marginally wider, which could suggest a greater variation in the structure of the adventitious layer when sheared. However, the fit is less influenced by the parameters of the sheared layer due to the lower weighting of the R_S contribution at $7.0 \times 10^2 \text{ s}^{-1}$. As a result, the parameters of the sheared layer can vary more widely whilst remaining consistent with the data. With this in mind, it would appear that the adventitious layers are equivalent within error.

The fitted magnetic scattering length density, SLD_m, of the iron oxide suggests that the film contains a significant proportion of magnetic iron oxides such as magnetite or maghemite. The fitted SLD_n for the iron oxide layer is lower than the expected SLD_n for hematite, magnetite and maghemite at $7.20 \times 10^{-6} \text{ \AA}^{-2}$, $6.95 \times 10^{-6} \text{ \AA}^{-2}$ and $6.67 \times 10^{-6} \text{ \AA}^{-2}$ respectively. The

lower SLD_n could suggest the presence of iron hydroxides which typically have lower atomic densities, and hence lower SLD_n s, than the iron oxides mentioned above.⁴¹ Another possibility is that the iron oxide layer is somewhat porous, with the adventitious layer adsorbing into the pores.

The model used to fit the data collected at $7.0 \times 10^2 \text{ s}^{-1}$ does not reproduce the sharp fringe minima in the reflectivity collected at $3.7 \times 10^3 \text{ s}^{-1}$ as shown in the Supporting Information. The sharper fringe at $3.7 \times 10^3 \text{ s}^{-1}$ is thought to result from reduced specular reflection from the dodecane-air interface at higher roller angular velocities. This could be caused by increased attenuation over a thickened wetting dodecane layer and/or from a significant roughening of the interface. The former case has been calculated to require the dodecane layer to thicken substantially, approximately to 400 μm , to produce the sharper fringe minima. While some thickening is expected with greater angular velocities, this scale of thickening would be visible and has not been observed. However, it has been observed that higher roller angular velocities lead to the roughening of the wetting layer, where visible waviness is present for the whole stroke length of the tribometer roller. Images comparing the roughness of the wetting layer at $7.0 \times 10^2 \text{ s}^{-1}$ and $3.7 \times 10^3 \text{ s}^{-1}$ are shown in the Supporting Information. Therefore, it is suggested that a roughening factor for the dodecane-air interface must be included to suitably model the reflectivity at high roller angular velocities.

GMO at the iron oxide-dodecane interface

Two dodecane solutions containing GMO (20 mM) were entrained against an iron-coated silicon substrate at $7.0 \times 10^2 \text{ s}^{-1}$ and their NR profiles were collected. The shear rate was achieved using a horizontal velocity of $1.8 \times 10^{-3} \text{ m s}^{-1}$ and a roller surface velocity of $1.4 \times 10^{-1} \text{ m s}^{-1}$. One of the GMO solutions was made with 100 % dodecane- d_{26} and the other solution was made with a 29:71 volumetric mixture of dodecane- d_{26} :dodecane- h_{26} , referred to as CMdod. Figure 6a compares the reflectivity measured at $7.0 \times 10^2 \text{ s}^{-1}$ with neat dodecane- d_{26} to the reflectivity measured with 20 mM solution of GMO in dodecane- d_{26} . While the substrates used for the collection of these profiles are not the same, their reflectivity profiles collected in solvent and air are alike. Therefore, it is expected that the shift in the Kiessig fringes between the

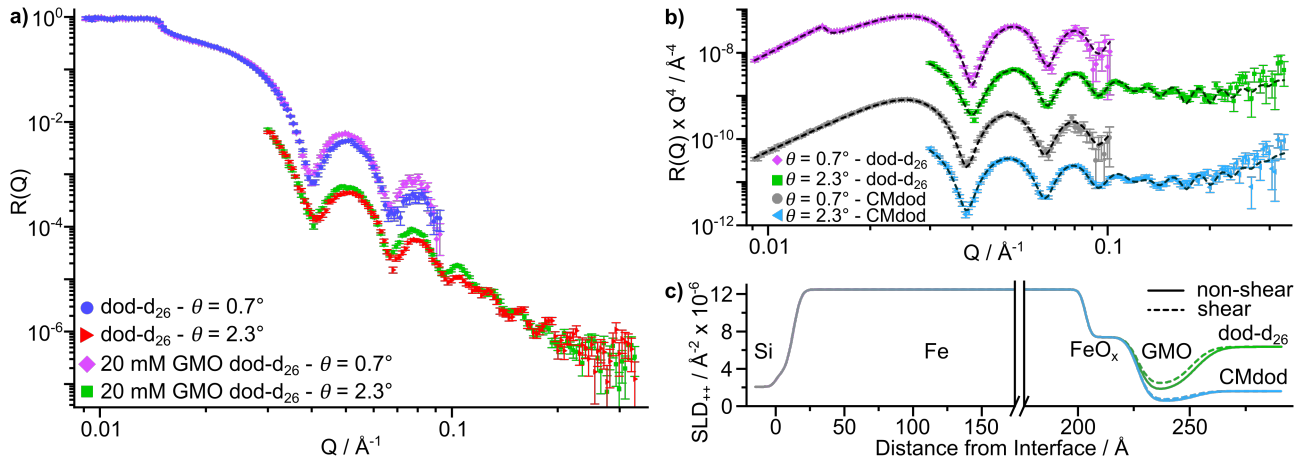


Figure 6. NR data, fits and SLD profiles for the GMO-dodecane systems. (a) Comparison of NR data for dodecane- d_{26} with and without GMO entrained against iron-coated silicon substrates at $7.0 \times 10^2 \text{ s}^{-1}$. Data collected at $\theta = 2.3^\circ$ are offset by 10^{-1} in the vertical axis. (b) NR data for 20 mM GMO in dodecane- d_{26} and CMdod entrained against an iron-coated silicon substrate at $7.0 \times 10^2 \text{ s}^{-1}$. Best fits shown by dashed lines. The reflectivity has been modified by a Q^4 factor to aid comparison. Data are offset in the vertical axis for clarity. (c) Spin-up scattering length density, SLD_{++} , profile from median values of the GMO-dodecane system. A small SiO_2 layer was modelled between the Si and Fe layer but is not labelled for clarity. Here, $\text{SLD}_{++} = \text{SLD}_n + \text{SLD}_m$.

datasets is due to the adsorption of GMO at the iron oxide-dodecane interface and not the difference between the two coated substrates.

The two solvent contrasts of the GMO-dodecane system were globally fit using the model described for the dataset collected with neat dodecane, with the adsorbed GMO represented by two layers to account for possible variation with shear. Further details on the model can be found in the Supporting Information. The best fit to the data and the median SLD profile from the parameter distributions are shown in Figure 6b and Figure 6c respectively. The parameter distributions from the fit are shown in Table 2. The film thickness of the residual dodecane layer was found to be $104_{-33}^{+71} \text{ \AA}$. It was found that the data was best described using only one adsorbed layer as models that included separate GMO and adventitious layers resulted in unrealistic parameter values. Therefore, it is expected that the GMO layer will contain some residual adventitious material that was present at the interface before exposure to the GMO solution.

The data were fit with fixed SLD_n s for both GMO layers but both had a solvation parameter

Table 2. Fitted layer parameters for the GMO-dodecane solutions entrained against an iron-coated silicon substrate at $7.0 \times 10^2 \text{ s}^{-1}$. The central parameter values are the median values obtained from the bootstrap routine, with the 95 % confidence intervals reported in the sub- and superscripts. Those values without uncertainties were held constant. * – parameters used to model the sheared layer. † – parameters used to model the non-sheared layer.

Layer	SLD _n / $\text{\AA}^{-2} \times 10^{-6}$	SLD _m / $\text{\AA}^{-2} \times 10^{-6}$	Thickness / \AA	Roughness / \AA	Solvation / %
Si	2.07	-	∞	3.0	-
SiO ₂	3.47	-	$12.7^{+2.9}_{-7.4}$	$4.6^{+1.9}_{-3.6}$	-
Fe	$7.9^{+0.1}_{-0.1}$	$4.6^{+0.1}_{-0.1}$	$19.1^{+0.1}_{-0.2} \times 10^1$	$2.1^{+4.4}_{-1.1}$	-
FeO _x	$6.9^{+0.3}_{-0.3}$	$0.5^{+0.3}_{-0.3}$	$23.3^{+0.8}_{-0.8}$	$4.3^{+4.8}_{-2.3}$	-
*GMO	0.21	-	$24.3^{+9.9}_{-10.2}$	$6.7^{+3.3}_{-4.7}$	$35.2^{+45.3}_{-35.2}$
†GMO	0.21	-	$25.8^{+4.4}_{-5.2}$	$7.7^{+2.3}_{-5.7}$	$24.5^{+21.6}_{-22.4}$

to model mixing with the solvent. Similar values of solvation have been reported for oleic acid adsorbed at iron oxide-dodecane interfaces using polarised NR.⁴² After mixing, the SLD_ns are $2.4^{+2.8}_{-2.2} \times 10^{-6} \text{\AA}^{-2}$ and $1.7^{+1.3}_{-1.4} \times 10^{-6} \text{\AA}^{-2}$ for the sheared and non-sheared GMO layers in the dodecane-d₂₆ system respectively. While the SLD_n for the GMO layers after mixing are similar values to the adventitious layers in the neat dodecane-d₂₆ system, the thicknesses of the GMO layers are greater than adventitious layers. This indicates that the interfacial layer consists of a greater amount of organic material when GMO is present in solution, supporting the previous suggestion of GMO adsorption at the interface.

Monolayer films have been suggested multiple times for OFMs adsorbed at solid-liquid interfaces, where thicknesses are lower than the extended length of the adsorbate molecule.^{43–46} While the lower values of the GMO thickness distributions agree reasonably with the extended length of GMO, which is $\approx 23.8 \text{\AA}$, a monolayer structure would imply GMO is adsorbed at the interface near the normal angle with negligible conformation defects. These implications appear inconsistent with the solvation values, which suggest significant mixing of solvent in the interfacial layers. The formation of a GMO monolayer at the normal angle could only then occur if there were substantial order between solvent and the adsorbate, which is not expected. For these reasons, coupled with the thickness values that are greater than the extended length of GMO, it is suggested that GMO does not adopt a monolayer structure upon adsorption

at $7.0 \times 10^2 \text{ s}^{-1}$. Instead, it is postulated that more complex structures are formed at the interface; adsorbed reverse micelles have been reported from molecular dynamic simulations for GMO adsorbed at hematite and mica surfaces in non-aqueous solvents.^{47–49}

The uncertainties in the solvation and thickness parameters for the sheared GMO layer are approximately double those for the non-sheared layer. It is expected that a significant factor for the greater parameter variation in the sheared layer is the lower sensitivity as discussed for the pure solvent system. It is also possible that the variation arises from the formation of a range of adsorbed structures when under different shear environments, as the tribometer does not provide a homogeneous sheared environment. The non-sheared layer is expected to relax from the sheared state during the time taken to traverse the interface ($> 18 \text{ s}$), although it is not clear if partial or full relaxation occurs.

X-ray reflectometry

An iron-coated silicon substrate was loaded into the tribometer and the XRR profile was measured in air. Afterwards, the tribometer oil bath was loaded with a 20 mM solution of GMO in dodecane- h_{26} and the roller was positioned 200 μm from the substrate surface. The roller was set to a surface velocity of $6.0 \times 10^{-1} \text{ m s}^{-1}$ whilst held in a horizontal position, resulting in a shear rate of $3.0 \times 10^3 \text{ s}^{-1}$. Subsequently, the XRR profile was collected and is shown along with the air contrast in Figure 7a. Fits to the data are also shown which were produced by a global fit to both datasets using a multilayer slab model. The model used the same layer properties for the coated Si substrate but the beam-in parameters were chosen to match the different properties of air and dodecane. The fitted layer parameters are shown in Table 3 and the resultant median $\text{SLD}_{\text{X-ray}}$ profile for the GMO-dodecane system is shown in Figure 7b.

The model used to fit the dataset collected with GMO includes a transmission scale factor to account for the attenuation of the X-ray beam before and after reflection at the substrate. As the roller is positioned close to the substrate surface, the beam will propagate through dodecane at low θ and through PEEK and dodecane at higher θ as depicted in Figure 7c. As the beam propagates through both materials, the beam is attenuated resulting in a reduced intensity

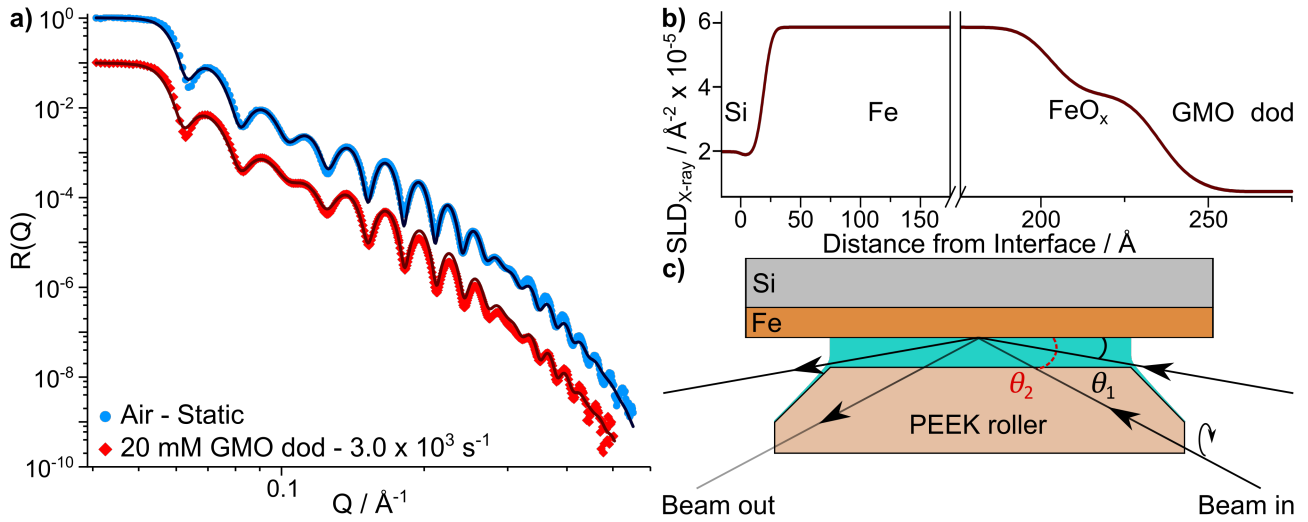


Figure 7. Overview of XRR data and analysis. (a) XRR data collected from an iron-coated silicon substrate in air and with a 20 mM GMO dodecane- h_{26} solution entrained against the substrate at $3.0 \times 10^3 \text{ s}^{-1}$. The data collected with the entrained solution has been offset by 10^{-1} in the vertical axis. The solid lines show the fits to the data. Error bars have been removed for clarity. (b) The $\text{SLD}_{\text{X-ray}}$ profile across the interface, constructed using the median parameter values. (c) Comparison of the X-ray beam path depending on the scattering angles used. θ_1 depicts the beam path at low scattering angles, where the beam propagates through dodecane before and after reflection at the interface. θ_2 shows the approximate beam path at greater incident angles, where the X-ray propagates through the PEEK roller and then through dodecane before and after reflection.

of coherent scatter falling on the detector. At low θ any angle change upon refraction at the air-dodecane interface is negligible as it is less than 2×10^{-7} degrees. In the case of a 200 μm gap, the influence of any meniscus curvature is also negligible as the maximum deviation of intensity is less than the measured reflectivity error.

At higher θ the X-ray beam propagates through the PEEK roller and then through dodecane before and after reflection. The X-ray beam initially strikes the 45° chamfered edge of the roller, where the refractive angle follows Snell's law. The beam is then refracted at the horizontal PEEK-dodecane interface and propagates towards the substrate through dodecane. After reflection, the X-ray beam propagates in the direction of the detector through dodecane and PEEK with a similar path to the incident beam. The intensity at the detector is calculated using the path lengths and the pre-determined linear attenuation coefficients of dodecane and PEEK which are 0.205 cm^{-1} and 0.388 cm^{-1} respectively.⁵⁰ The calculation of the path lengths and attenuation factors in dodecane and PEEK is detailed in the Supporting Information. The transmission scale factor was not included when modelling the data collected with the substrate

Table 3. XRR fitted parameter values for the iron-coated silicon substrate in air and with a 20 mM GMO solution entrained against the substrate at $3.0 \times 10^3 \text{ s}^{-1}$. The central parameter values are the median values obtained from the bootstrap routine, with the 95 % confidence intervals reported in the sub- and superscripts. Those values without uncertainties were held constant. * – layer only included in the 20 mM GMO solution model.

Layer	SLD _{X-ray} / $\text{\AA}^{-2} \times 10^{-6}$	Thickness / \AA	Roughness / \AA
Si	19.8	∞	3.0
SiO ₂	18.6	$19.3^{+10.5}_{-14.1}$	$5.5^{+2.8}_{-0.2}$
Fe	$58.6^{+2.4}_{-1.2}$	$18.4^{+0.1}_{-0.1} \times 10^1$	$7.2^{+1.9}_{-0.5}$
FeO _x	$37.6^{+1.3}_{-1.8}$	$32.2^{+0.8}_{-0.5}$	$7.9^{+0.3}_{-2.8}$
*GMO	8.9	$15.3^{+23.0}_{-12.5}$	$4.9^{+4.5}_{-2.5}$

in air as the roller was not held near the surface and hence did not cross the beam path.

It was necessary to include a θ -offset parameter to appropriately model the critical edge in the data collected from the GMO-dodecane system. This parameter was allowed to vary during the fit as the true value of the offset was not known but was expected to be $\approx -0.01^\circ$. After fitting the data, it was found that the θ -offset was $-9^{+3}_{-2} \times 10^{-3}$ degrees. As a result the Q values in the dodecane-GMO system are expected to be overestimates by approximately $4^{+1}_{-1} \times 10^{-3} \text{ \AA}^{-1}$. The best fit without this parameter is shown in the Supporting Information, along with further details on the use of the θ -offset parameter.

The distribution of the adsorbed GMO thickness is broader with a lower median value compared to the GMO thickness inferred from the NR analysis at $7.0 \times 10^2 \text{ s}^{-1}$. It is expected that the poor SLD_{X-ray} contrast between the solvent and the GMO leads to the wide range of GMO thicknesses that are consistent with the data. As a result, a comparison of the GMO structure at $7.0 \times 10^2 \text{ s}^{-1}$ and $3.0 \times 10^3 \text{ s}^{-1}$ is not appropriate, aside from noting that the fitted thickness of GMO at $7.0 \times 10^2 \text{ s}^{-1}$ falls within the range determined at $3.0 \times 10^3 \text{ s}^{-1}$. While some variation in the GMO thickness may be expected with the increase in shear rate, it is not expected that the adsorbed layer would be substantially thicker or thinner. Nevertheless, the reasonable fit shows that data collected from an interface under shear with the tribometer can be interpreted.

Discussion

The use of a novel tribometer designed for the *in-situ* study of surfactants under shear at solid-liquid interfaces using NR and XRR has been demonstrated by studying the adsorption of GMO at the iron oxide-dodecane interface. NR data was collected with neat dodecane-d₂₆ entrained against an iron-coated silicon substrate at two shear rates of $7.0 \times 10^2 \text{ s}^{-1}$ and $3.7 \times 10^3 \text{ s}^{-1}$. It was shown that the NR data collected at the lower shear rate could be modelled by considering the total reflectivity as the weighted sum of the reflection from the sheared and non-sheared portions of the interface. Additionally, the reflectivity from the non-sheared portion of the interface was considered as the combination of reflectivity arising from both the immediate substrate-dodecane interface and the distant dodecane-air interface. NR data collected at the higher shear rate displayed sharper fringe minima that were not reproducible when using this model. It is postulated that higher roller angular velocities increase the roughness of the dodecane-air interface, resulting in reduced specular reflectivity in fringe minima. Therefore, a knowledge of the roughness is essential for modelling the reflectivity at higher shear rates. It would be possible to remove the additional reflectivity from the non-sheared portion by restricting the beam footprint to fall only within the sheared meniscus region. This would have the additional benefit of increasing the sensitivity of the measurement towards the structure of the sheared layer. However, the time required to achieve satisfactory counting error would increase significantly. It would also be possible to increase the size of the meniscus by using a roller with a greater radius, although it is estimated that in order to double the meniscus width, a roller with approximately four times the radius is required. This has the drawback of requiring larger quantities of expensive deuterated material.

It was found when fitting the NR data collected with neat solvent that it was necessary to include an interfacial layer of which the exact nature is unclear. It is suggested that this layer consisted of water or adsorbed atmospheric gases, which may have adsorbed prior to or during the measurement as the tribometer has an open sample environment. It was also shown that GMO adsorbs at the iron oxide-dodecane interface from solution to form an interfacial layer with a thickness of $24.3^{+9.9}_{-10.2} \text{ \AA}$ at $7.0 \times 10^2 \text{ s}^{-1}$ and a thickness of $25.8^{+4.4}_{-5.2} \text{ \AA}$ when not under direct shear. This suggests GMO adsorbs to form a layer that is thicker than a simple monolayer

which appears to be insensitive to the effects of shear at $7.0 \times 10^2 \text{ s}^{-1}$. The precise structure of the adsorbed GMO is not known.

XRR data was collected with a 20 mM solution of GMO in dodecane- h_{26} entrained against an iron-coated silicon substrate at $3.0 \times 10^3 \text{ s}^{-1}$. A model accounting for attenuation across the beam path before and after reflection was presented and used to fit the sheared XRR data. A GMO thickness of $15.3_{-12.5}^{+23.0} \text{ \AA}$ was found to be consistent with the data, where the wide confidence intervals are thought to result from the poor solvent-adsorbate contrast. Consequently, it is not possible to draw comparisons between the GMO structures at the two different shear rates, and it is difficult to suggest a suitable structure for the interfacial GMO layer at $3.0 \times 10^3 \text{ s}^{-1}$. It is suggested that XRR with the tribometer would be a powerful technique for studying surface-active compounds with greater electron densities under shear, such as inorganic friction modifiers.

Materials and Methods

Materials

Polished silicon blocks with square dimensions of 55 mm and a 10 mm thickness were purchased from Pi-Kem, UK. These were sputter coated with an iron layer by Nano Optics Berlin, Germany, to provide a smooth iron oxide layer. Glycerol monooleate (> 99 %) was purchased from Sigma Aldrich and was stored below 0 °C. *n*-dodecane- h_{26} was purchased from Fisher (> 99 % purity, Acros Organics). *n*-dodecane- d_{26} was obtained from Cambridge Isotopes, US (> 98 % deuterated, 98 % purity).

Neutron reflectometry

NR experiments with the tribometer were conducted on INTER at ISIS, UK.⁵¹ Neutrons with approximate wavelengths, λ , of 2–17 Å were selected and the reflectivity profiles were collected at two scattering angles, θ , of 0.7° and 2.3°. This resulted in a Q range of 0.009–0.300 Å⁻¹, where Q is the momentum transfer and is defined as $Q = 4\pi \sin \theta / \lambda$. The standard deviation dQ/Q resolution was 2 %. The neutron guide slits were set to give a footprint of approximately

40.7 mm along the interface, which can be estimated to have a trapezoid intensity distribution with a 25.4 mm region of homogeneous intensity at the centre.

The iron-coated silicon substrates were cleaned by UV-ozone (20 min) before being mounted in the tribometer. The tribometer roller and oil bath were washed with *n*-dodecane-h₂₆ and dried with a N₂ stream. The tribometer was then loaded with 10 ml of sample solution, and the roller’s angular velocity and horizontal velocity were set at specific values. The temperature of the oil bath and substrate were kept constant at 25 °C.

The reflection data were normalised with direct beam measurements that were collected with the sample in the beam while using the same slit settings as the reflection measurements. The reduced data were then fit using GenX 2.10 which uses the Parratt recursive formalism to minimise χ^2 , the least-squares error between the experimental and simulated reflectivity profiles.^{52,53} To model the magnetic domain scattering on a non-polarised instrument, an evenly weighted linear combination of the down- and up-spin reflectivity contributions was used. This approach assumes the size of the magnetic domains in the iron and iron oxide layers are larger than the neutron coherence length. 95 % confidence intervals were estimated using a bootstrap resampling routine combined with a differential evolution algorithm (further information in the Supporting Information).

X-ray reflectometry

XRR experiments with the tribometer were conducted on I07 at Diamond Light Source, UK.⁵⁴ The photon energy was 25.0 keV, corresponding to a wavelength of 0.496 Å. A range of scattering angles, $\theta = 0.092\text{--}1.140^\circ$, were used to provide a Q range of 0.041–0.504 Å⁻¹. The reflected intensity was measured with a Pilatus 100K 2D detector with a count time of one second per scattering angle. The 2θ angular resolution was 0.01°, resulting in a momentum transfer standard deviation resolution, dQ , of 2.2×10^{-3} Å⁻¹. At low θ the sample was over-illuminated by the X-ray beam which had a full width at half maximum vertical height of approximately 100 µm. The temperature of the oil bath and substrate were held at 25 °C. The same cleaning procedures used in the NR experiments were used to prepare the substrates and the tribometer

prior to collection of XRR profiles.

The collected data were reduced with the RodAn package in DAWN, where a region-of-interest with an area of 7×7 pixels was used to define the specular reflection.⁵⁵ Linear background subtraction was performed using two adjacent areas of 5×5 pixels to define the background intensity. The data were also corrected for any over-illumination at low θ . The reduced data were then fit using GenX 2.10 by reducing the modulus of the difference between the logarithms of the simulated and real data. Confidence intervals were estimated through the same bootstrap routine as the NR fits.

References

1. Ralston, J., Fornasiero, D., Grano, S., Duan, J., & Akroyd, T. Reducing uncertainty in mineral flotation—flotation rate constant prediction for particles in an operating plant ore. *Int. J. Miner. Process.* **84**, 89–98 (2007).
2. Taylor, R. I., & de Kraker, B. R. Shear rates in engines and implications for lubricant design. *P. I. Mech. Eng. J-J. Eng.* **231**, 1106–1116 (2017).
3. Spikes, H. Friction modifier additives. *Tribol. Lett.* **60**, 5; [10.1007/s11249-015-0589-z](https://doi.org/10.1007/s11249-015-0589-z) (2015).
4. Hardy, W. B., & Doubleday, I. Boundary lubrication.— The paraffin series. *Proc. R. Soc. A.* **100**, 550–574 (1922).
5. Studt, P. Boundary lubrication: adsorption of oil additives on steel and ceramic surfaces and its influence on friction and wear. *Tribol. Int.* **22**, 111–119 (1989).
6. Jahanmir, S., & Beltzer, M. An adsorption model for friction in boundary lubrication. *ASLE Trans.* **29**, 423–430 (1986).
7. Daniel, S. G. The adsorption on metal surfaces of long chain polar compounds from hydrocarbon solutions. *T. Faraday Soc.* **47**, 1345–1359 (1951).
8. Cook, E. L., & Hackerman, N. Adsorption of polar organic compounds on steel. *J. Phys. Chem.* **55**, 549–557 (1951).

9. Barrena, E., Kopta, S., Ogletree, D. F., Charych, D. H., & Salmeron, M. Relationship between friction and molecular structure: alkylsilane lubricant films under pressure. *Phys. Rev. Lett.* **82**, 2880–2883 (1999).
10. Yoshizawa, H., Chen, Y. L., & Israelachvili, J. Fundamental mechanisms of interfacial friction. 1. Relation between adhesion and friction. *J. Phys. Chem.* **97**, 4128–4140 (1993).
11. Salmeron, M. Generation of defects in model lubricant monolayers and their contribution to energy dissipation in friction. *Tribol. Lett.* **10**, 69–79 (2001).
12. Ruths, M., Lundgren, S., Danerlöv, K., & Persson, K. Friction of fatty acids in nanometer-sized contacts of different adhesive strength. *Langmuir* **24**, 1509–1516 (2008).
13. Nalam, P. C., Pham, A., Castillo, R. V., & Espinosa-Marzal, R. M. Adsorption behavior and nanotribology of amine-based friction modifiers on steel surfaces. *J. Phys. Chem. C* **123**, 13672–13680 (2019).
14. Sahoo, R. R., & Biswas, S. K. Frictional response of fatty acids on steel. *J. Colloid Interf. Sci.* **333**, 707–718 (2009).
15. Glovnea, R., Forrest, A., Olver, A., & Spikes, H. Measurement of sub-nanometer lubricant films using ultra-thin film interferometry. *Tribol. Lett.* **15**, 217–230 (2003).
16. Anghel, V., Bovington, C., & Spikes, H. A. Thick-boundary-film formation by friction modifier additives. *Lubr. Sci.* **11**, 313–335 (1999).
17. Nakano, K., & Spikes, H. A. Process of boundary film formation from fatty acid solution. *Tribol. Online* **7**, 1–7 (2012).
18. Ratoi, M., Anghel, V., Bovington, C., & Spikes, H. A. Mechanisms of oiliness additives. *Tribol. Int.* **33**, 241–247 (2000).
19. Allen, C. M., & Drauglis, E. Boundary layer lubrication: monolayer or multilayer. *Wear* **14**, 363–384 (1969).
20. Briscoe, B. J., & Evans, D. C. B. The shear properties of Langmuir—Blodgett layers. *Proc. R. Soc. A.* **380**, 389–407 (1982).
21. Corvis, Y., Barré, L., Jestin, J., Gummel, J., & Cousin, F. Asphaltene adsorption mechanism under shear flow probed by in situ neutron reflectivity measurements. *Eur. Phys. J. Spec. Top.* **213**, 295–302 (2012).

22. Yu, C., Evmenenko, G., Kmetko, J., & Dutta, P. Effects of shear flow on interfacial ordering in liquids: X-ray scattering studies. *Langmuir* **19**, 9558–9561 (2003).
23. Welbourn, R. J. L., & Clarke, S. M. New insights into the solid–liquid interface exploiting neutron reflectivity. *Curr. Opin. Colloid Interface Sci.* **42**, 87–98 (2019).
24. Penfold, J., Staples, E., Tucker, I., & Fragnetto, G. The effect of shear on the adsorption of non-ionic surfactants at the liquid—solid interface. *Physica B Condens. Matter* **221**, 325–330 (1996).
25. Baker, S. M. *et al.* Shear cell for the study of liquid-solid interfaces by neutron scattering. *Rev. Sci. Instrum.* **65**, 412–416 (1994).
26. Junghans, A. *et al.* Analysis of biosurfaces by neutron reflectometry: from simple to complex interfaces. *Biointerphases* **10**, 019014; [10.1116/1.4914948](https://doi.org/10.1116/1.4914948) (2015).
27. Wolff, M. *et al.* Combined neutron reflectometry and rheology. *J. Appl. Crystallogr.* **46**, 1729–1733 (2013).
28. Welbourn, R. J. L., Bartholomew, F., Gutfreund, P., & Clarke, S. M. Neutron reflectometry of an anionic surfactant at the solid–liquid interface under shear. *Langmuir* **33**, 5982–5990 (2017).
29. Cosgrove, T., Luckham, P. F., Richardson, R. M., Webster, J. R. P., & Zarbakhsh, A. The measurement of volume fraction profiles for adsorbed polymers under compression using neutron reflectometry. *Colloids Surf., A* **86**, 103–110 (1994).
30. Cho, J. H. J. *et al.* Surface force confinement cell for neutron reflectometry studies of complex fluids under nanoconfinement. *Rev. Sci. Instrum.* **79**, 103908; [10.1063/1.3005483](https://doi.org/10.1063/1.3005483) (2008).
31. Vos, W. M. de *et al.* Measuring the structure of thin soft matter films under confinement: a surface-force type apparatus for neutron reflection, based on a flexible membrane approach. *Rev. Sci. Instrum.* **83**, 113903; [10.1063/1.4767238](https://doi.org/10.1063/1.4767238) (2012).
32. Kuhl, T. L., Smith, G. S., Israelachvili, J. N., Majewski, J., & Hamilton, W. Neutron confinement cell for investigating complex fluids. *Rev. Sci. Instrum.* **72**, 1715–1720 (2001).
33. Zarbakhsh, A., Querol, A., Bowers, J., & Webster, J. R. P. Structural studies of amphiphiles adsorbed at liquid–liquid interfaces using neutron reflectometry. *Faraday Discuss.* **129**, 155–167 (2005).

34. Browning, K. L. *et al.* Specular neutron reflection at the mica/water interface - irreversible adsorption of a cationic dichain surfactant. *J. Appl. Cryst.* **47**, 1638–1646 (2014).
35. Gutfreund, P. *et al.* Depletion at solid/liquid interfaces: flowing hexadecane on functionalized surfaces. *J. Chem. Phys.* **134**, 064711; [10.1063/1.3549895](https://doi.org/10.1063/1.3549895) (2011).
36. Maccarini, M. *et al.* Density depletion at solid-liquid interfaces: a neutron reflectivity study. *Langmuir* **23**, 598–608 (2007).
37. Steitz, R. *et al.* Nanobubbles and their precursor layer at the interface of water against a hydrophobic substrate. *Langmuir* **19**, 2409–2418 (2003).
38. Doshi, D. A., Watkins, E. B., Israelachvili, J. N., & Majewski, J. Reduced water density at hydrophobic surfaces: effect of dissolved gases. *PNAS* **102**, 9458–9462 (2005).
39. Scoppola, E. *et al.* Reflectometry reveals accumulation of surfactant impurities at bare oil/water interfaces. *Molecules* **24**, 4113; [10.3390/molecules24224113](https://doi.org/10.3390/molecules24224113) (2019).
40. Seo, Y. S., & Satija, S. No intrinsic depletion layer on a polystyrene thin film at a water interface. *Langmuir* **22**, 7113–7116 (2006).
41. Cornell, R. M., & Schwertmann, U. *The Iron Oxides: Structure, Properties, Reactions, Occurrences and Uses* (Wiley-VCH, Weinheim, 2003). [second edition]
42. Wood, M. H. *et al.* Comparative adsorption of saturated and unsaturated fatty acids at the iron oxide/oil interface. *Langmuir* **32**, 534–540 (2016).
43. Wood, M. H. *et al.* Hexadecylamine adsorption at the iron oxide–oil interface. *Langmuir* **29**, 13735–13742 (2013).
44. Lundgren, S. M., Ruths, M., Danerlöv, K., & Persson, K. Effects of unsaturation on film structure and friction of fatty acids in a model base oil. *J. Colloid Interface Sci.* **326**, 530–536 (2008).
45. Campen, S., Green, J. H., Lamb, G. D., & Spikes, H. A. In situ study of model organic friction modifiers using liquid cell AFM; saturated and mono-unsaturated carboxylic acids. *Tribol. Lett.* **57**, 18; [10.1007/s11249-015-0465-x](https://doi.org/10.1007/s11249-015-0465-x) (2015).
46. Campana, M. *et al.* Surfactant adsorption at the metal–oil interface. *Langmuir* **27**, 6085–6090 (2011).

47. Tsagkaropoulou, G., Warrens, C. P., & Camp, P. J. Interactions between friction modifiers and dispersants in lubricants: the case of glycerol monooleate and polyisobutylsuccinimide-polyamine. *ACS Appl. Mater. Interfaces* **11**, 28359–28369 (2019).
48. Bradley-Shaw, J. L., Camp, P. J., Dowding, P. J., & Lewtas, K. Molecular dynamics simulations of glycerol monooleate confined between mica surfaces. *Langmuir* **32**, 7707–7718 (2016).
49. Bradley-Shaw, J. L., Camp, P. J., Dowding, P. J., & Lewtas, K. Self-assembly and friction of glycerol monooleate and its hydrolysis products in bulk and confined non-aqueous solvents. *Phys. Chem. Chem. Phys.* **20**, 17648–17657 (2018).
50. Henke, B. L., Gullikson, E. M., & Davis, J. C. X-ray interactions: photoabsorption, scattering, transmission, and reflection at E=50-30000 eV, Z=1-92. *At. Data Nucl. Data Tables* **54**, 181–342 (1993).
51. Webster, J., Holt, S., & Dalgliesh, R. INTER the chemical interfaces reflectometer on target station 2 at ISIS. *Physica B Condens. Matter* **385-386**, 1164–1166 (2006).
52. Bjorck, M., & Andersson, G. GenX: an extensible X-ray reflectivity refinement program utilizing differential evolution. *J. Appl. Crystallogr.* **40**, 1174–1178 (2007).
53. Parratt, L. G. Surface Studies of Solids by Total Reflection of X-Rays. *Phys. Rev.* **95**, 359–369 (1954).
54. Nicklin, C., Arnold, T., Rawle, J., & Warne, A. Diamond beamline I07: a beamline for surface and interface diffraction. *J. Synchrotron Rad.* **23**, 1245–1253 (2016).
55. Basham, M. *et al.* Data analysis workbench (DAWN). *J. Synchrotron Rad.* **22**, 853–858 (2015).

Acknowledgments

A. Armstrong thanks Infineum UK for funding and support. R. Barker would like to acknowledge the support of the Royal Society Industrial Fellowship (Grant No. SIF\R1\181005). Thanks to Dr Luisa Islas for providing much needed assistance during one of the neutron reflectometry experiments. Many thanks to Dr Thomas Wood, ISIS, STFC, for providing the original bootstrap code that was altered and used here. Thanks to Dr Diego Alba Venero, ISIS, STFC, for collecting the dodecane transmission data on the ZOOM instrument at ISIS.

We thank STFC for the awarded peer-reviewed access to the INTER neutron reflectometer at ISIS (DOIs: [10.5286/ISIS.E.RB1810175](https://doi.org/10.5286/ISIS.E.RB1810175), [10.5286/ISIS.E.RB1820185](https://doi.org/10.5286/ISIS.E.RB1820185)). This work was carried out with the support of Diamond Light Source, beamline I07 (proposal IN19763).

Competing interests

The authors declare no competing interests.

Author contributions

All authors conducted and assisted in the neutron reflectometry experiments and R.J.L.W performed the data reduction. A.J.A carried out the neutron reflectometry data analysis with input from R.J.L.W, T.M.M, R.B and A.F.R. A.J.A, T.M.M and J.L.R conducted the X-ray reflectometry experiments and A.J.A performed the data analysis with assistance from J.L.R. A.F.R, B.C and P.J.D supervised the project and assisted in interpreting the results. A.J.A. wrote the manuscript with inputs from all authors. All authors reviewed the final manuscript.