

Research article

## Identification of a novel gene family that includes the interferon-inducible human genes *6-16* and *ISG12*

Nadeene Parker<sup>1,2</sup> and Andrew CG Porter\*<sup>1</sup>Address: <sup>1</sup>Gene Targeting Group, MRC Clinical Sciences Centre, Imperial College Faculty of Medicine, Hammersmith Hospital, Du Cane Road, London, W12 0NN, UK and <sup>2</sup>Present address: Department of Clinical Biochemistry, Addenbooke's Hospital, Cambridge, CB2 2QR, UKEmail: Nadeene Parker - [np205@medschl.cam.ac.uk](mailto:np205@medschl.cam.ac.uk); Andrew CG Porter\* - [andy.porter@csc.mrc.ac.uk](mailto:andy.porter@csc.mrc.ac.uk)

\* Corresponding author

Published: 19 January 2004

Received: 10 November 2003

BMC Genomics 2004, 5:8

Accepted: 19 January 2004

This article is available from: <http://www.biomedcentral.com/1471-2164/5/8>

© 2004 Parker and Porter; licensee BioMed Central Ltd. This is an Open Access article: verbatim copying and redistribution of this article are permitted in all media for any purpose, provided this notice is preserved along with the article's original URL.

### Abstract

**Background:** The human *6-16* and *ISG12* genes are transcriptionally upregulated in a variety of cell types in response to type I interferon (IFN). The predicted products of these genes are small (12.9 and 11.5 kDa respectively), hydrophobic proteins that share 36% overall amino acid identity. Gene disruption and over-expression studies have so far failed to reveal any biochemical or cellular roles for these proteins.

**Results:** We have used *in silico* analyses to identify a novel family of genes (the *ISG12* gene family) related to both the human *6-16* and *ISG12* genes. Each *ISG12* family member codes for a small hydrophobic protein containing a conserved ~80 amino-acid motif (the *ISG12* motif). So far we have detected 46 family members in 25 organisms, ranging from unicellular eukaryotes to humans. Humans have four *ISG12* genes: the *6-16* gene at chromosome 1p35 and three genes (*ISG12(a)*, *ISG12(b)* and *ISG12(c)*) clustered at chromosome 14q32. Mice have three family members (*ISG12(a)*, *ISG12(b1)* and *ISG12(b2)*) clustered at chromosome 12F1 (syntenic with human chromosome 14q32). There does not appear to be a murine *6-16* gene. On the basis of phylogenetic analyses, genomic organisation and intron-alignments we suggest that this family has arisen through divergent inter- and intra-chromosomal gene duplication events. The transcripts from human and mouse genes are detectable, all but two (human *ISG12(b)* and *ISG12(c)*) being upregulated in response to type I IFN in the cell lines tested.

**Conclusions:** Members of the eukaryotic *ISG12* gene family encode a small hydrophobic protein with at least one copy of a newly defined motif of ~80 amino-acids (the *ISG12* motif). In higher eukaryotes, many of the genes have acquired a responsiveness to type I IFN during evolution suggesting that a role in resisting cellular or environmental stress may be a unifying property of all family members. Analysis of gene-function in higher eukaryotes is complicated by the possibility of functional redundancy between family-members. Genetic studies in organisms (e.g. *Dictyostelium discoideum*) with just one family member so far identified may be particularly helpful in this respect.

### Background

Interferons (IFNs) are a family of secreted cytokines [1,2] that exert their biological activities by binding to specific cell membrane receptors to trigger a well characterised

intracellular signalling pathway [3,4] culminating in the transcriptional induction of IFN stimulated genes (ISGs). It is through the ISGs that IFNs generate diverse cellular and physiological states involving antiviral, apoptotic,

antiproliferative, antitumor and immunomodulatory activities [4]. Oligonucleotide arrays have been used to show that there are several hundred ISGs [5]. ISGs can be responsive to type I ( $\alpha/\beta$ ) IFNs, type II IFNs ( $\gamma$ ) or both. The DNA motifs close to or within the ISGs that mediate these responses are the 14 nt IFN Stimulated Response Elements (ISREs) and the 9 nt GAS elements for type I and type II IFNs, respectively. Most ISGs code for proteins whose biochemical and cellular roles are either well understood (e.g. the genes for RNA-dependent protein kinase PKR [6,7], 2'-5' Oligoadenylate Synthetase [8,9] and the genes of the MHC [10,11]), or partially understood (e.g. the p202 genes [12], p56 [13], and the 1-8 family [14]). There remains some prominent ISGs, however, including 6-16 [15] and ISG12 [16] for which there are no known biochemical or cellular functions.

IFN is used in the treatment of several human diseases including Hepatitis C [17,18] and multiple sclerosis [19]. Unfortunately, IFN treatment can have unwanted side effects [20] the mechanisms of which remain unclear. It has, therefore, long been recognised that to thoroughly understand IFN function and to minimise the side effects of IFN therapies, a more complete understanding of the ISGs is required.

The type I IFN stimulated human 6-16 and ISG12 (herein renamed as ISG12(a)) are ISGs that encode small hydrophobic proteins (Mr 12.9 kDa and 11.5 kDa, respectively). The predicted proteins share 36% overall amino-acid identity and 49% identity over an ~80 amino acid length. Both genes are regulated by type I IFNs in a number of cell lines [21-23]. Human 6-16, in particular, is characterised by its high inducibility in response to IFN. In HeLa cells 6-16 mRNA can constitute as much as 0.1% of the total mRNA after IFN stimulation [22]. It is therefore likely that these genes play an important role in the IFN response.

Despite gene disruption [24] and over-expression [25] studies, cellular and/or biochemical roles for the 6-16 and ISG12 gene products have not been identified. One way to address this problem is to identify related genes whose characteristics may provide clues to function.

Here we present *in silico* data identifying a novel family of genes (the ISG12 gene family) related to human 6-16 and ISG12. Each family member codes for a small, hydrophobic protein that contains a conserved, 80 amino-acid motif. So far, 46 members of this family have been determined in 25 organisms ranging from higher mammals to single celled amoeba. While none of the genes has a known function, identification of this family indicates a number of systems in which gene function can be investigated.

## Results and discussion

### Identification and characterisation of ESTs related to human 6-16 and ISG12

We have used the human 6-16 (accession number: BN000257) and ISG12 (accession number: BN000225) sequences to conduct an online BLAST search, at the protein level, of EMBL and Genbank databanks and so uncover ~1,500 separate nucleotide sequences (EST, genomic, mRNA etc). Alignment of these sequences allowed subdivision into 46 different transcripts (named according to phylogenetic analysis, below) originating from 25 different species (summarised, Table 1). Clustal W [26] was used to align the ~1,500 nucleotide sequences and generate a consensus sequences for each of the 46 different transcripts. These consensus sequences were then submitted to EMBL as third party annotations (accession numbers shown in Table 1). Putative protein coding sequences were determined using the first ATG rule [27]. Performing a BLAST search with any of these 46 putative proteins uncovers nearly the same set of ~1,500 genes described above. This suggests that there is a highly conserved region shared by these sequences.

### Identification of a conserved ISG12 protein motif

An alignment of the 46 putative amino-acid sequences listed in Table 1 was used to identify an ~80 amino-acid ISG12 motif (Figure 1) shared by all. This alignment has been submitted to Pfam (<http://www.sanger.ac.uk/Software/Pfam/>, Version 10, accession number: PF06140) and represents a newly identified gene family, the ISG12 gene family. Using the ISG12 motif for BLAST searches did not uncover any further family members. All family members encode a single motif except for one of the mouse genes, ISG12(b), which encodes two.

Analyses of predicted protein sequences with programme suites such as PredictProtein <http://www.embl-heidelberg.de/predictprotein/predictprotein.html> or EMBOSS <http://www.rfcgr.mrc.ac.uk/Registered/Webapp/emboss-w2h/> did not give many clues as to signalling, structure or function. The proteins identified are hydrophobic (Table 1, Figure 2) raising the possibility that they may be membrane-associated proteins. Transmembrane prediction programmes (TMHMM [28], HMMTOP [29] and SMART [30]) gave varied and therefore inconclusive results (data not shown), although immunocytochemical analysis appears to locate ISG12(a) to the nuclear membrane [25].

Regions outside the motif do not share good sequence identity, but are similar in that they are often short, hydrophobic and contain a high percentage of residues with small side groups (A, B, C, D, G, N, P, S, T and V).

**Table 1: ISG12 genes found through Blast database searches**

Species	Common name	Name of gene <sup>¶</sup>	EMBL Accession number <sup>§</sup>	length of putative protein aa(kDA)	# of ESTS available for given gene	Molar % of non-polar residues	Lit. search	Evidence for alternative splicing? <sup>*</sup>
Bos Taurus	Cow	6-16	BN000173	134 (14.0)	25	61.9		
		ISG12(a)	BN000214	218 (20.2)	41	68.3		✓
		ISG12(b1)	BN000215	-	9	71.2		✓
Coregonus clupeaformis	Lake whitefish	ISG12(b2)	BN000216	-	9	61.6		
		ISG12	BN000218	92 (7.9)	2	83.7		
Danio Rerio	Zebrafish	ISG12(1)	BN000219	95 (8.3)	7	80		
		ISG12(2)	BN000220	96 (8.3)	5	86.5		
Dictyostelium discoideum	Soil-living amoeba	ISG12	BN000217	171 (18.0)	3	52.6		
Equus caballus	Horse	6-16	BN000211	132 (13.4)	1	65.1		
		ISG12(a)	BN000221	160 (14.7)	3	74.4		
Gallus gallus	Chicken	ISG12(1)	BN000222	99 (9.0)	6	83.8		
		ISG12(2)	BN000223	107 (10.3)	8	50.5		
Gillichthys mirabilis	long-jawed mudsucker	ISG12	BN000224	95 (8.4)	1	82.1		✓
Homo sapiens	Human	6-16	BN000257	130 (12.9)	169	67.7	[15]	
		ISG12(a)	BN000225	122 (11.5)	388	73.0	[16]	✓
		ISG12(b)	BN000226	130 (12.4)	70	65.4		✓
		ISG12(c)	BN000227	104 (9.5)	35	74		✓
		ISG12(b)	BN000226	130 (12.4)	70	65.4		✓
Ictalurus punctatus	Channel catfish	ISG12(1)	BN000228	95 (8.6)	9	76.8		
		ISG12(2)	BN000229	99 (8.5)	9	81.2		✓
Macaca Mulatta	Rhesus monkey	6-16	BN000252	130 (12.9)	1	67.7		
		ISG12(a)	BN000230	122 (11.6)	2	73.8		
		ISG12(b)	BN000253	-	1	75.4		
Mesocricetus auratus	Golden hamster	ISG12(b)	BN000254	-	1	82.1	[34]	
Mus musculus	Mouse	ISG12(a)	AJ566111	260 (25.6)	282	64.6		
		ISG12(b1)	BN000231	90 (7.9)	54	81.1	[35]	✓
		ISG12(b2)	BN000232	283 (27.8)	16	62.9		✓
Oncorhynchus mykiss	Rainbow trout	ISG12(1)	BN000233	98 (8.6)	5	82.7		
		ISG12(2)	BN000234	-	2	81.8		
		ISG12(3)	BN000235	101 (8.8)	1	81.2		
Oryzias latipes	Japanese medaka	ISG12(1)	BN000236	102 (9.0)	8	80.4		
		ISG12(2)	BN000237	95 (8.2)	3	86.3		
Ovis aries	Sheep	6-16	BN000212	134 (13.9)	34	61.9		
		ISG12(a)	BN000238	-	11	69.7		✓
Pan troglodytes	Chimpanzee	ISG12(b)	BN000255	-	1	56.0		✓
		6-16	BN000256	130 (12.9)	1	66.9	[36]	
		ISG12	BN000258	-	5	57.9		
Paralichthys olivaceus	Bastard halibut	ISG12	BN000258	-	5	57.9		
		ISG12(a)	BN000239	182 (16.7)	80	71.4	[37]	✓
Rattus norvegicus	Brown rat	ISG12(b)	BN000240	95 (8.5)	13	77.9		✓

Table 1: ISG12 genes found through Blast database searches (Continued)

Salmo salar	Atlantic salmon	ISG12(2)	BN000241	-	10	78.2
		ISG12(3)	BN000242	101 (8.9)	4	80.2
Strongylocentrotus purpuratus	Purple sea urchin	ISG12	BN000243	-	1	71
Suberites domuncula	Sponge	ISG12	BN000244	-	1	80.8
Sus scrofa	Pig	6-16	BN000213	132 (13.4)	11	63.6
		ISG12(a)	BN000245	176 (15.9)	38	72.2
Takifugu rubripes	Torafugu	ISG12	BN000246	-	8	77.5
Tetraodon nigroviridis	Spotted green pufferfish	ISG12	BN000247	-	4	75.0



‡ As named after phylogenetic and chromosomal cluster analysis § Submitted as third party annotations except mouse ISG12(a) that was independently sequenced \* As observed in EST alignments

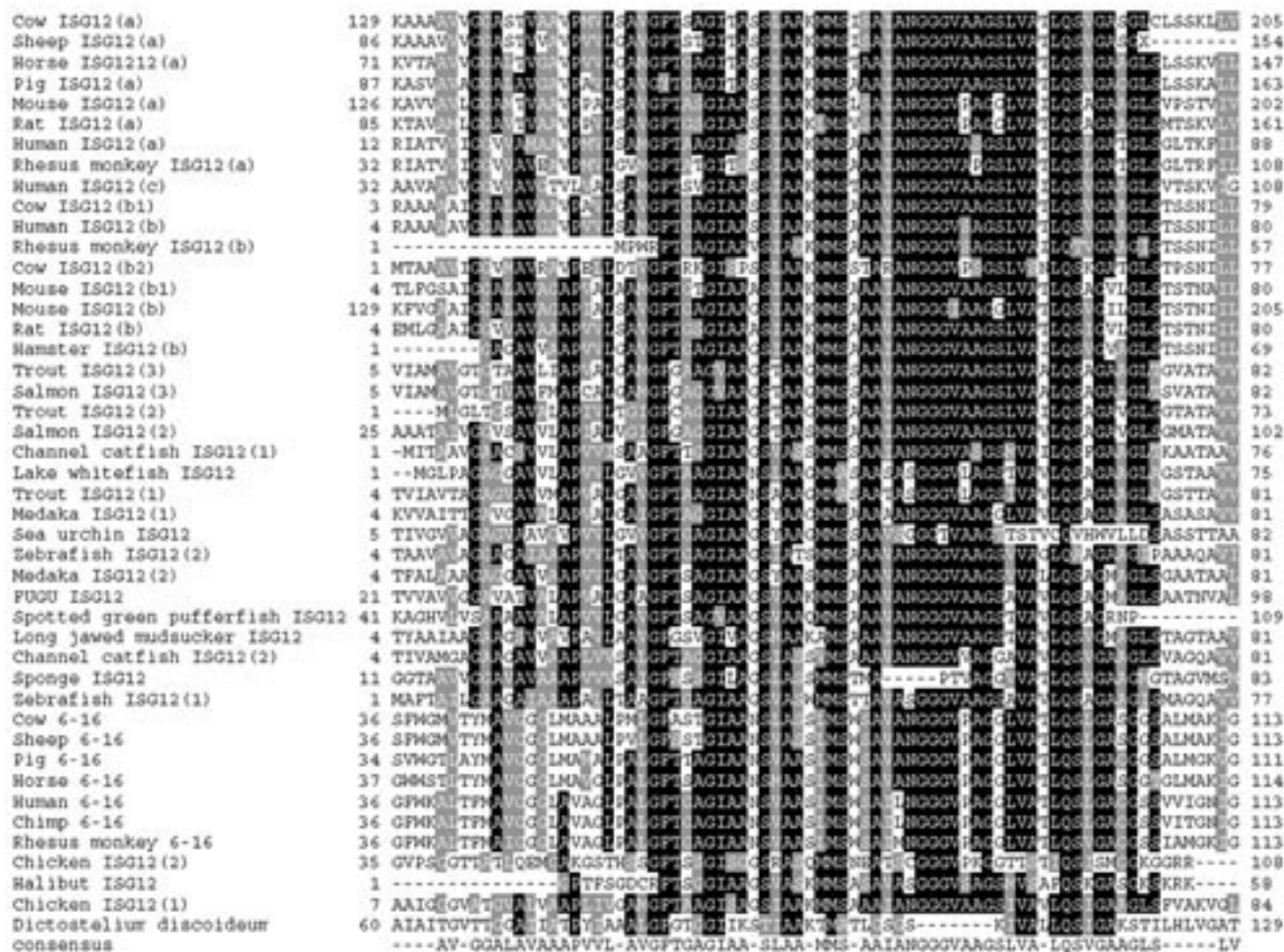
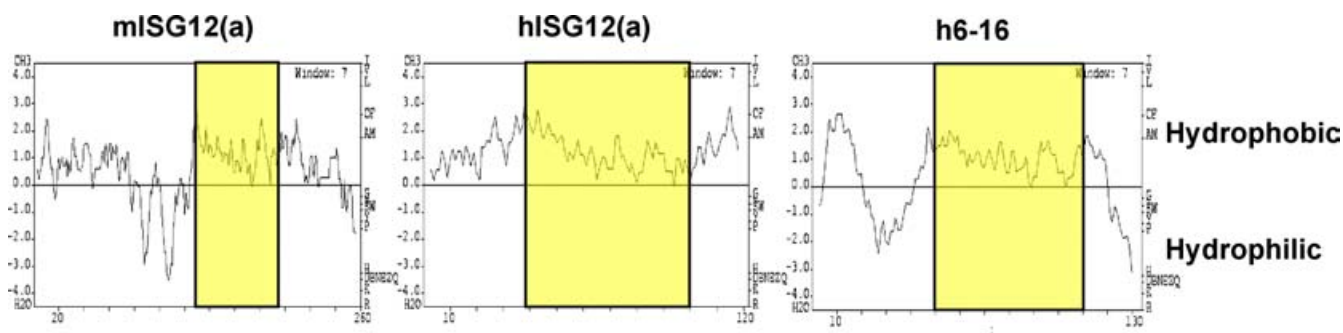


Figure 1 Alignment of putative protein sequences identifies a ISG12 protein motif. Putative protein product of the genes in Table 1 were aligned using Clustal W [26] and annotated using Boxshade [http://www.ch.embnet.org/software/BOX\\_form.html](http://www.ch.embnet.org/software/BOX_form.html). The section of this alignment where the predicted proteins share greatest amino-acid identity is shown. The consensus sequence for this region represents residues that are conserved in 50% or more of the sequences and defines the ISG12 motif (Pfam accession number: PF06140). Black squares represent sequence identity and grey squares represent sequence similarity. Numbers flanking the sequence represent amino-acid numbers in the putative proteins.



**Figure 2**  
**Predicted protein hydrophobicity.** Kyte-Doolittle schematics were formulated using GREASE software <http://www.rfcgr.mrc.ac.uk> to show the hydrophobicity of predicted protein sequences for mouse ISG12(a), human ISG12(a) and human 6–16. ISG12 motifs are highlighted in yellow.

### Phylogenetic analysis

In order to determine whether the 46 genes identified form particular subgroups, phylogenetic analysis was performed in higher mammals.

The mammalian sequences from Figure 1 were used to compose a parsimonious tree using *Dictyostelium discoideum* as a distant relative for the out-grouping of the tree (Figure 3). Four tentative clades were identified in this way: 6–16, ISG12a, ISG12b and ISG12c. Bootstrapping shows that, where the 6–16 genes have stable branches, the remaining genes cannot be as stringently divided in this way. Only genes in closely related species seem to give stable branching points (i.e. mouse and rat ISG12a and ISG12b's) suggesting that the ISG12 gene-products are less uniformly divergent than the 6–16 gene products.

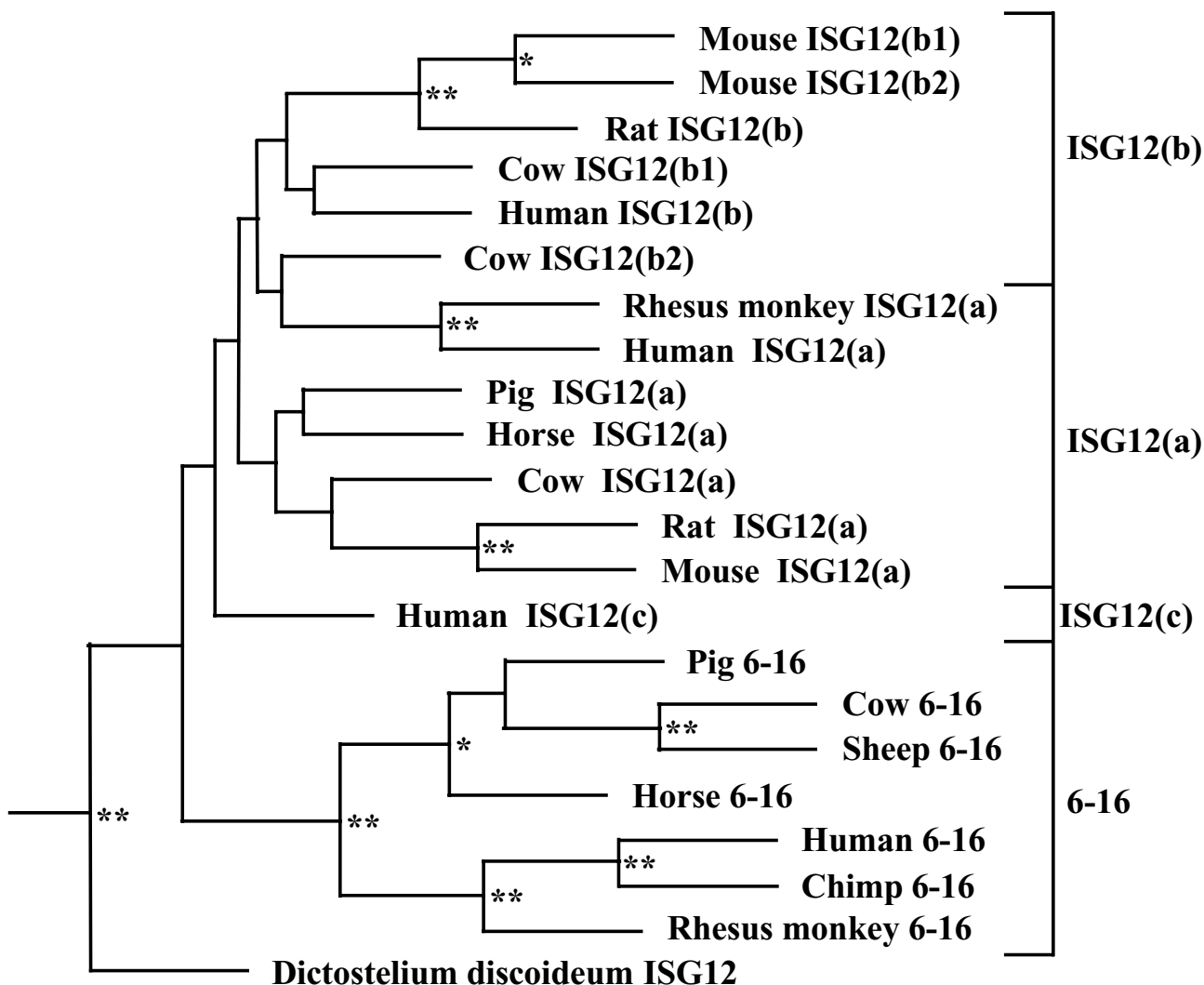
### Gene organisation

To clarify the grouping of family members, BLAST was used to identify ISG12 genomic sequences. Aligning mRNA and genomic DNA sequence revealed intron/exon structure and, for organisms with sufficiently complete genome sequences (human, mouse, rat), chromosomal locations of ISG12 family members could be identified. The results for human and mouse genes are summarised in Figure 4. The human, mouse and rat (not shown) ISG12 genes cluster at syntenic loci (14q32, 12F1 and 6q32, respectively). By identifying conserved genes immediately flanking these clusters (ATP-dependent RNA Helicase DDX24 (Dead-Box Protein 24) and Heat-Like Repeat-containing protein isoform 1), the mouse and human loci could be correctly aligned, simplifying comparison of ISG12 gene organisation between the two species. The relative positions and opposing orientations of *hISG12(a)* and *hISG12(b)* are matched in the mouse locus by *mISG12(a)* and *mISG12(b1)/mISG12(b2)*. This,

plus the conserved intron/exon arrangement in *hISG12(b)*, *mISG12(b1)* and the two halves of *mISG12(b2)*, suggests that *hISG12(a)* and *mISG12(a)* are orthologues, and that the *mISG12(b1)* and *mISG12(b2)* genes arose from an ancestral murine orthologue of *hISG12(b)* by two gene duplications and one gene fusion. This leaves only *hISG12(c)* whose orientation is consistent with it having arisen by duplication of *hISG12(a)*. Thus the phylogenetic relationship of the ISG12 genes, reflected in their assigned suffixes (a, b, b1 etc), is supported by the analysis of gene structure.

Where intron/exon structure is available, intron position was marked on an alignment (as in Figure 1) of predicted protein sequences (Figure 5). Intron site conservation at the N and C termini of the motif is much more pronounced than elsewhere. This is consistent with the possibility that the motif represents a structural domain that is evolutionarily conserved while being placed in different sequence contexts by exon shuffling. Structural analyses will be required to test this possibility.

We can postulate, then, that the ISG12 family arose from an ancestral gene that underwent an initial gene duplication event to form ISG12(a) and ISG12(b). This event probably happened between the emergence of amoeba and divergence of fish, judging by the identification of only one ISG12 in simple eukaryotes, such as *Dictyostelium*, and multiple ISG12's in mammals, fish and birds. The 6–16 clade appears to have arisen by interchromosomal duplication just before the divergence of the ungulates and primates. The ISG12(b2) and ISG12(c) genes probably arose relatively recently (phylogenetic evidence suggests that cow b2 and mouse b2 are probably not orthologues (Figure 3)) as these have not been found in other organisms. That the ISG12 motif has been found

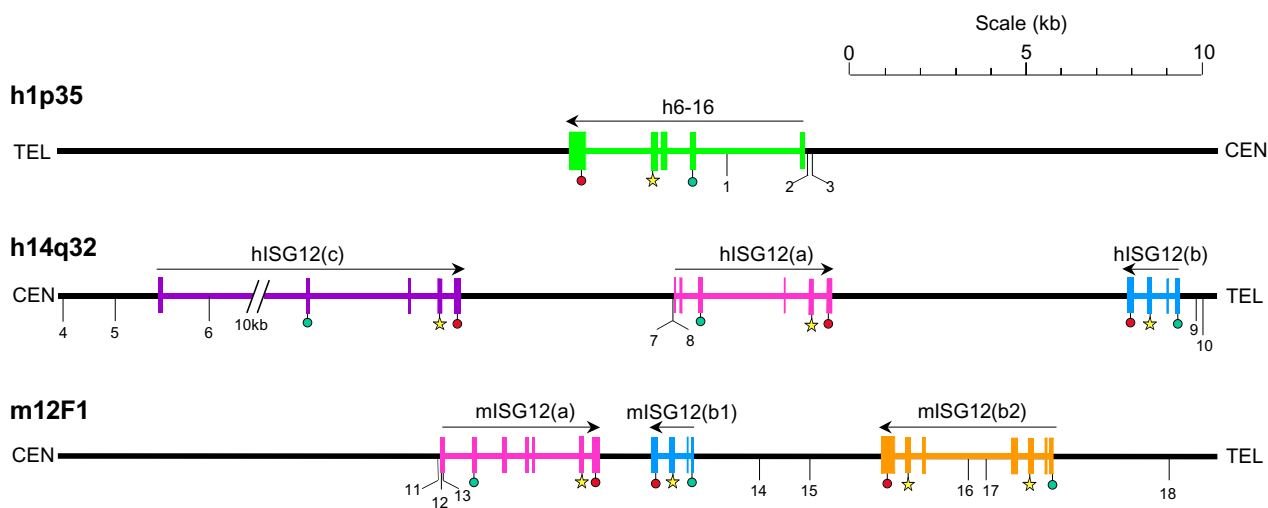


**Figure 3**  
**Phylogenetic analysis of the ISG12 family.** Maximum parsimony tree with bootstrap confidence levels based on putative protein coding sequence of higher mammals using *D. discoideum* as an out-group (see materials and methods). Two stars represent a bootstrap confidence level >85%, one star >60%.

in organisms that do not host the IFN signalling pathway indicates that the IFN responsiveness seen in human 6-16 and ISG12(a) arose later in evolution. There may be a basic function shared by all family members that has been co-opted in higher organisms to become part of the IFN response.

**IFN responsiveness of ISG12 transcripts**

The finding that the ISG12 motif occurs in simple eukaryotes suggests that not all ISG12 genes in higher organisms have necessarily been incorporated into the IFN response. We therefore looked at the number and fidelity of Interferon Stimulated Response Elements (ISREs; RGGAAANNGAAACT) [23] in the vicinity of the human and mouse ISG12 genes (Figure 4, Table 2).

**Figure 4**

**Genomic organisation of *ISG12* genes in humans and mice showing ISRE positions.** Regions of human chromosomes 1p35 and 14q32, and mouse chromosome 12F1, carrying *ISG12* genes are shown. Transcribed regions are coloured (thickened lines, introns; boxes, exons) and arrows represent direction of transcription. Translational initiation and termination sites are indicated by green and red circles, respectively. Exons encoding an *ISG12* motif are starred. The positions of numbered ISRE sequences (as defined in Table 2) are indicated. Orientations relative to Telomeres (TEL) and Centromeres (CEN) are indicated. The regions shown can be accessed from the Ensembl website using the following addresses: [http://www.ensembl.org/Homo\\_sapiens/contigview?chr=1&vc\\_start=27575333&vc\\_end=27625333&highlight=ENSG00000126709](http://www.ensembl.org/Homo_sapiens/contigview?chr=1&vc_start=27575333&vc_end=27625333&highlight=ENSG00000126709); [http://www.ensembl.org/Homo\\_sapiens/contigview?chr=14&vc\\_start=92535062&vc\\_end=92590000&x=0&y=0](http://www.ensembl.org/Homo_sapiens/contigview?chr=14&vc_start=92535062&vc_end=92590000&x=0&y=0); [http://www.ensembl.org/Mus\\_musculus/contigview?chr=12&vc\\_start=97445000&vc\\_end=97475000&x=38&y=12](http://www.ensembl.org/Mus_musculus/contigview?chr=12&vc_start=97445000&vc_end=97475000&x=38&y=12).

Semi-quantitative, RT-PCR analysis was used to determine whether the human and mouse *ISG12* genes were responsive to type I IFN (Figure 6). This confirmed that, as previously shown [21,22], human 6-16 and *ISG12(a)* are highly IFN-responsive in the human fibrosarcoma HT1080 cell line. As might be expected from the positioning of ISRE's so close to exon 1 (Figure 4), mouse *ISG12(a)* is also IFN-responsive, though much less strongly (Figure 6) than human *ISG12(a)*. Mouse *ISG12(b1)* and (b2) are IFN-responsive in the fibroblast cell line L-929, but human *ISG12(b)* and (c) were not induced in HT1080 cells despite the proximity of putative ISRE sequences. Figure 6 does show that all the genes tested are transcribed in the cell lines tested and does not preclude IFN-stimulation in other cell lines of those genes so far not found to be inducible.

### Conclusions

Using EMBL and Genbank searches, we have been able to compile a family of 46 genes related to the human 6-16 and human *ISG12(a)* genes. Aligning all 46 genes reveals

an ~80 amino-acid motif (the *ISG12* motif) that is shared between genes in species as diverse as amoeba and humans. The 46 genes identified code for highly hydrophobic, potentially membrane-embedded proteins and fall into four main groups; 6-16, *ISG12(a)*, *ISG12(b)* and *ISG12(c)*. These four distinct gene groups seem to have been derived through gene duplication and divergent evolution, with all genes, other than 6-16, remaining clustered in syntenic loci.

The existence of a member of the *ISG12* gene family in *Dictyostelium discoideum*, which does not possess the IFN system, combined with evidence that some family members in higher eukaryotes are not IFN-responsive (at least in some cell types), suggests that IFN stimulation plays an ancillary role in *ISG12* gene function, and is not a defining characteristic. Further work is required to identify any unifying biochemical or cellular function for the *ISG12* family. One such function may be as part of a response to cellular or environmental stress. This would certainly encompass those family members that have become part



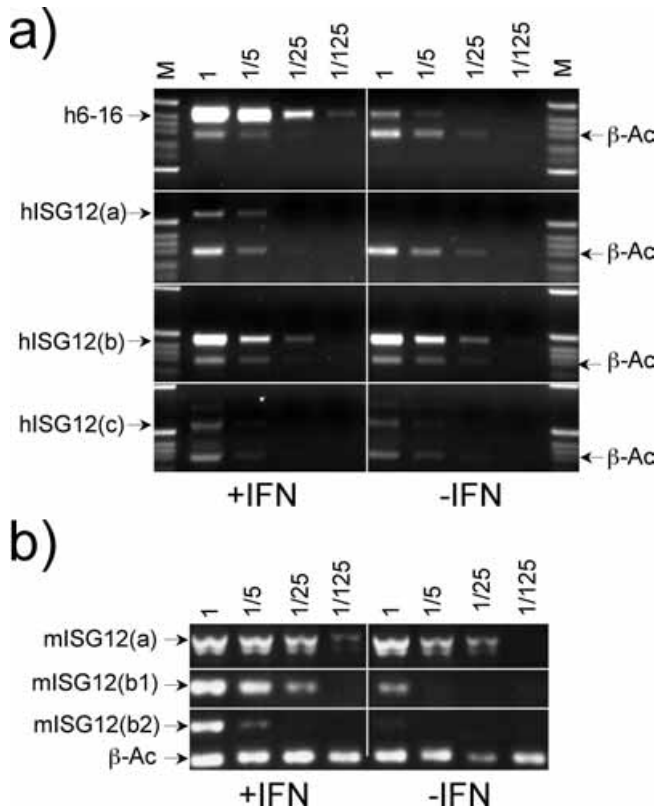
**Figure 5**  
**Alignment of introns in ISG12 amino-acid sequences.** Predicted ISG12 protein sequences, for genes whose intron/exon structures are available, are aligned as in Figure 1, with the ISG12 motifs highlighted in yellow. Positions of introns lie between the amino acids that have been marked (↓).

**Table 2: ISREs found at human and mouse ISG12 gene loci**

ISRE	Nucleotide sequence <sup>a</sup>	Identity to Consensus (strand)
Consensus	<b>RGGAAANNGAAACT</b>	
1	tGGAAAAAGAACT	13/14 (+)
2	GGGAAAATGAACT	14/14 (-)
3	GGGAAAATGAACT	14/14 (-)
4	AGGAAAAGGgAAtg	11/14 (-)
5	GGGAAAATGgAAgg	11/14 (-)
6	TGGAAATAGcAAga	10/14 (+)
7	TGGAAATGAAACc	12/14 (+)
8	AGGAAACCGAACT	14/14 (-)
9	TGGAAAAGGcAAaT	11/14 (-)
10	GGGAAAATGtAAac	11/14 (-)
11	GGGAAATAGAAACc	13/14 (+)
12	GGGAAATCGAACT	14/14 (+)
13	AGGAAATTGAAACc	13/14 (+)
14	GGGAAAAGAcAAgc	11/14 (-)
15	AGGAAAATGAAACa	13/14 (-)
16	GGGAAAAGTgTAAgg	11/14 (-)
17	GGGAAAAGAcAAgc	11/14 (-)
18	tGGAAACAGAACT	13/14 (-)

<sup>a</sup> Only those ISRE's with a > 11/14 match to the consensus sequence [23], including an exact match to the bold residues in bold, are shown.





**Figure 6**  
**Expression of human and mouse ISG12 genes in cell lines.** Transcripts for the indicated human and mouse *ISG12* genes were detected by RT-PCR. RNA was isolated from the human HT1080 cells (a) or mouse L-929 cells (b) treated with (left hand panels) or without (right hand panels) type I IFN for 24 h. The indicated serial five-fold dilutions of reverse transcripts were analysed by PCR. Most PCR assays included, as an internal control, primers for beta-actin ( $\beta$ -Ac). Diagnostic products for each transcript are arrowed. M = size markers.

of the IFN system, which is itself a response cellular insults such as viral infection and oxidative stress, while allowing for the possibility that other family members contribute to combating cellular stress independently of the IFN system. In organisms that have multiple family members, functional redundancy may complicate genetic analyses of *ISG12* gene function, and multiple gene-knockouts or knockdowns may be required to reveal a clear phenotype. Members of the *ISG12* gene family were not found in common laboratory model organisms such as fruit flies or nematode worms, despite searching complete genomes with the motif. However, studies of simpler organisms, such as the slime mould *D. discoideum*, with only one *ISG12* gene, may provide a useful alternative approach.

**Methods**

**Database searches and sequence alignments**

The Genbank and EMBL databases were screened using the online BLAST [31,32] server at <http://www.ncbi.nlm.nih.gov/BLAST> and <http://menu.rfcgr.mrc.ac.uk/cgi-bin/blast> (authorization required) respectively. Searches were performed at both the nucleotide (blastn) and amino acid (blastp) levels.

Sequences were aligned using Clustal W [26] in the MAGI (Multiple Alignment General Interface) suit at <http://menu.hgmp.mrc.ac.uk/menu-bin/MAGI/magi> (authorization required) and then manipulated for presentation using Boxshade at [http://www.ch.embnet.org/software/BOX\\_form.html](http://www.ch.embnet.org/software/BOX_form.html).

Putative proteins for mouse ISG12(a), human ISG12(a) and human 6-16 were used for basic *in silico* protein structure analysis using the programmes HMMTOP [29], SMART [30] and TMHMM [28] to give prediction of transmembrane helices and hydrophobicity plots.

**Phylogenetic analysis**

Putative amino acid sequences of genes found above were aligned using Clustal W as above. Phylogenetic analyses of the alignment were conducted using Protpar on the Phylip package [33] through the PIE (Phylogeny Interface Environment) suit at <http://www.hgmp.mrc.ac.uk/Registered/Webapp/pie/>. A maximum parsimony tree with branch confidence values based on 1000 bootstrap replicates was constructed. The putative protein coding sequence for *D. discoideum* was used as an out-grouping species. The tree was then annotated with bootstrap confidence levels (\* = > 60 %, \*\* = > 85 %).

**Cell lines**

The human cell lines HT1080 (ATCC#CCL-121) and HEK293 (ATCC#CCL-1573) and mouse cell lines L-929 (ATCC#CCL-1) were cultured as monolayers in 1 x Dulbecco's modified eagle medium (GIBCO) supplemented with heat inactivated FCS (10 % (v/v), Globepharm), L-glutamine (2 mM, GIBCO), non-essential amino acids (0.4 mM, GIBCO), sodium pyruvate (1 mM, GIBCO) and antibiotics penicillin/streptomycin (100 Uml<sup>-1</sup> and 100  $\mu$ gml<sup>-1</sup> respectively, GIBCO). The cells were grown to ~40% confluency and then induced using type I IFN (AD hybrid IFN, 200 IUml<sup>-1</sup>, 24 hours).

**RT-PCR of ISG12 transcripts**

RNA was prepared from cultured cells as described [23] and used (2  $\mu$ g) with oligo(dt)<sub>18</sub> primer to synthesis first-strand cDNA (Promega).

PCR reactions (25  $\mu$ l) were set up with dNTPs (0.25 mM, Pharmacia), experiment primers (100 ng each, Genosys),

control primers (as described, 18s QuantumRNA, Ambion), 1 × reaction buffer (Qiagen), Taq polymerase (1.25 U, Qiagen) and template (1 μl of 25 μl cDNA-synthesis reaction). The following oligonucleotides were used as primers; mISG12(a)f: 5'-GGTGTGTCTTCCTGCACAGTGG-3'; mISG12(a)b: 5'-GGCAATATGTGTTAGGAGATTGTCG-3'; mISG12(b1)f: 5'-TTGCCAATGGAGGTGGAGTTGCAG-3'; mISG12(b1)b: 5'-ATCAGTGAGGTTCTGAAGGTGCC-3'; mISG12(b2)f: 5'-CCATAGCAGCCAAGATGATGTCTG-3'; mISG12(b2)b: 5'-TTGCCACACCAACAAACCATC-3'; hISG12(a)f: 5'-TCTCACCTCATCAGCAGTGACCAG-3'; hISG12(a)b: 5'-CCTCTGGAGATGCAGAATTTGG-3' hISG12(b)f: 5'-GTAACACCCCAAGAACGCTGTC-3'; hISG12(b)b: 5'-GCACTGCGATGTGACCTTTATTC-3' hISG12(c)f: 5'-GCACCTCCTCTTACAGCTTACTCC-3'; hISG12(c)b: 5'-GGAGACTTGTCCITTTGGAAGATTG-3'; h6-16f: 5'-GATTGCTTCTTCTCTCTCCAAG-3'; h6-16b: 5'-TCGAGATACTTGTGGGTGGCGTAG-3'.

Non-saturating, duplex PCR was performed under the following conditions: 1 cycle (4 mins, 94°C), 28 cycles (30 s, 94°C; 30 s, 60°C; 45 s, 72°C), 1 cycle (5 mins, 72°C). Products were analysed by agarose gel electrophoresis.

### Authors' contributions

NP designed and carried out all *in silico* and experimental analyses, and participated in the preparation of the manuscript. ACGP supervised the study and participated in the preparation of the manuscript. Both authors read and approved the final manuscript.

### Acknowledgements

This work was supported by the Medical Research Council.

### References

- Lindenmann J, Isaacs A: **Virus interference. I. The interferon.** *Proc. R. Soc. B* 1957, **147**:258-273.
- Wheelock EF: **Interferon-like virus-inhibitor induced in human leukocytes by phytohemagglutinin.** *Science* 1965, **149**:310-311.
- Sato M, Taniguchi T, Tanaka N: **The interferon system and interferon regulatory factor transcription factors -- studies from gene knockout mice.** *Cytokine Growth Factor Rev* 2001, **12**:133-142.
- Stark GR, Kerr IM, Williams BR, Silverman RH, Schreiber RD: **How cells respond to interferons.** *Annu Rev Biochem* 1998, **67**:227-264.
- Der SD, Zhou A, Williams BR, Silverman RH: **Identification of genes differentially regulated by interferon alpha, beta, or gamma using oligonucleotide arrays.** *Proc Natl Acad Sci U S A* 1998, **95**:15623-15628.
- Berry MJ, Knutson GS, Lasky SR, Munemitsu SM, Samuel CE: **Mechanism of interferon action. Purification and substrate specificities of the double-stranded RNA-dependent protein kinase from untreated and interferon-treated mouse fibroblasts.** *J Biol Chem* 1985, **260**:11240-11247.
- Clemens MJ, Elia A: **The double-stranded RNA-dependent protein kinase PKR: structure and function.** *J Interferon Cytokine Res* 1997, **17**:503-524.
- Hovanessian AG, Kerr IM: **The (2'-5') oligoadenylate (pppA2'-5'A2'-5'A) synthetase and protein kinase(s) from interferon-treated cells.** *Eur J Biochem* 1979, **93**:515-526.
- Kerr IM, Brown RE: **pppA2'p5'A2'p5'A: an inhibitor of protein synthesis synthesized with an enzyme fraction from interferon-treated cells.** *Proc Natl Acad Sci U S A* 1978, **75**:256-260.
- Atta MS, Irving WL, Powell RJ, Todd I: **Enhanced expression of MHC class I molecules on cultured human thyroid follicular cells infected with reovirus through induction of type I interferons.** *Clin Exp Immunol* 1995, **101**:121-126.
- Spear GT, Paulnock DM, Jordan RL, Meltzer DM, Merritt JA, Borden EC: **Enhancement of monocyte class I and II histocompatibility antigen expression in man by in vivo beta-interferon.** *Clin Exp Immunol* 1987, **69**:107-115.
- Ma XY, Wang H, Ding B, Zhong H, Ghosh S, Lengyel P: **The interferon-inducible p202a protein modulates NF-kappaB activity by inhibiting the binding to DNA of p50/p65 heterodimers and p65 homodimers while enhancing the binding of p50 homodimers.** *J Biol Chem* 2003, **278**:23008-23019.
- Guo J, Sen GC: **Characterization of the interaction between the interferon-induced protein P56 and the Int6 protein encoded by a locus of insertion of the mouse mammary tumor virus.** *J Virol* 2000, **74**:1892-1899.
- Pru JK, Austin KJ, Haas AL, Hansen TR: **Pregnancy and interferon-tau upregulate gene expression of members of the I-8 family in the bovine uterus.** *Biol Reprod* 2001, **65**:1471-1480.
- Friedman RL, Manly SP, McMahon M, Kerr IM, Stark GR: **Transcriptional and posttranscriptional regulation of interferon-induced gene expression in human cells.** *Cell* 1984, **38**:745-755.
- Rasmussen UB, Wolf C, Mattei MG, Chenard MP, Bellocq JP, Chambon P, Rio MC, Basset P: **Identification of a new interferon-alpha-inducible gene (p27) on human chromosome 14q32 and its expression in breast carcinoma.** *Cancer Res* 1993, **53**:4096-4101.
- Davis GL, Balart LA, Schiff ER, Lindsay K, Bodenheimer H. C., Jr., Perrillo RP, Carey W, Jacobson IM, Payne J, Dienstag JL, et al.: **Treatment of chronic hepatitis C with recombinant interferon alfa. A multicenter randomized, controlled trial. Hepatitis Interventional Therapy Group.** *N Engl J Med* 1989, **321**:1501-1506.
- Di Bisceglie AM, Martin P, Kassianides C, Lisker-Melman M, Murray L, Waggoner J, Goodman Z, Banks SM, Hoofnagle JH: **Recombinant interferon alfa therapy for chronic hepatitis C. A randomized, double-blind, placebo-controlled trial.** *N Engl J Med* 1989, **321**:1506-1510.
- Coyle PK, Hartung HP: **Use of interferon beta in multiple sclerosis: rationale for early treatment and evidence for dose- and frequency-dependent effects on clinical response.** *Mult Scler* 2002, **8**:2-9.
- Malik UR, Makower DF, Wadler S: **Interferon-mediated fatigue.** *Cancer* 2001, **92**:1664-1668.
- Gjermansen IM, Justesen J, Martensen PM: **The interferon-induced gene ISG12 is regulated by various cytokines as the gene 6-16 in human cell lines.** *Cytokine* 2000, **12**:233-238.
- Kelly JM, Porter AC, Chernajovsky Y, Gilbert CS, Stark GR, Kerr IM: **Characterization of a human gene inducible by alpha- and beta- interferons and its expression in mouse cells.** *Embo J* 1986, **5**:1601-1606.
- Porter AC, Chernajovsky Y, Dale TC, Gilbert CS, Stark GR, Kerr IM: **Interferon response element of the human gene 6-16.** *Embo J* 1988, **7**:85-92.
- Porter AC, Itzhaki JE: **Gene targeting in human somatic cells. Complete inactivation of an interferon-inducible gene.** *Eur J Biochem* 1993, **218**:273-281.
- Martensen PM, Sogaard TM, Gjermansen IM, Buttenschon HN, Rossing AB, Bonnevie-Nielsen V, Rosada C, Simonsen JL, Justesen J: **The interferon alpha induced protein ISG12 is localized to the nuclear membrane.** *Eur J Biochem* 2001, **268**:5947-5954.
- Thompson JD, Higgins DG, Gibson TJ: **CLUSTAL W: improving the sensitivity of progressive multiple sequence alignment through sequence weighting, position-specific gap penalties and weight matrix choice.** *Nucleic Acids Res* 1994, **22**:4673-4680.
- Kozak M: **Initiation of translation in prokaryotes and eukaryotes.** *Gene* 1999, **234**:187-208.
- Krogh A, Larsson B, von Heijne G, Sonnhammer EL: **Predicting transmembrane protein topology with a hidden Markov model: application to complete genomes.** *J Mol Biol* 2001, **305**:567-580.

29. Tusnady GE, Simon I: **Principles governing amino acid composition of integral membrane proteins: application to topology prediction.** *J Mol Biol* 1998, **283**:489-506.
30. Schultz J, Milpetz F, Bork P, Ponting CP: **SMART, a simple modular architecture research tool: identification of signaling domains.** *Proc Natl Acad Sci U S A* 1998, **95**:5857-5864.
31. Altschul SF, Gish W, Miller W, Myers EW, Lipman DJ: **Basic local alignment search tool.** *J Mol Biol* 1990, **215**:403-410.
32. Altschul SF, Madden TL, Schaffer AA, Zhang J, Zhang Z, Miller W, Lipman DJ: **Gapped BLAST and PSI-BLAST: a new generation of protein database search programs.** *Nucleic Acids Res* 1997, **25**:3389-3402.
33. Felsenstein J: **Confidence limits on phylogenies: An approach using the bootstrap.** *Evolution* 1985, **39**:783-791.
34. Denovan-Wright EM, Ferrier GR, Robertson HA, Howlett SE: **Increased expression of the gene for alpha-interferon-inducible protein in cardiomyopathic hamster heart.** *Biochem Biophys Res Commun* 2000, **267**:103-108.
35. Labrada L, Liang XH, Zheng W, Johnston C, Levine B: **Age-dependent resistance to lethal alphavirus encephalitis in mice: analysis of gene expression in the central nervous system and identification of a novel interferon-inducible protective gene, mouse ISG12.** *J Virol* 2002, **76**:11688-11703.
36. Kato T, Esumi M, Yamashita S, Abe K, Shikata T: **Interferon-inducible gene expression in chimpanzee liver infected with hepatitis C virus.** *Virology* 1992, **190**:856-860.
37. Li Q, Zhang M, Kumar S, Zhu LJ, Chen D, Bagchi MK, Bagchi IC: **Identification and implantation stage-specific expression of an interferon-alpha-regulated gene in human and rat endometrium.** *Endocrinology* 2001, **142**:2390-2400.

Publish with **BioMed Central** and every scientist can read your work free of charge

"BioMed Central will be the most significant development for disseminating the results of biomedical research in our lifetime."

Sir Paul Nurse, Cancer Research UK

Your research papers will be:

- available free of charge to the entire biomedical community
- peer reviewed and published immediately upon acceptance
- cited in PubMed and archived on PubMed Central
- yours — you keep the copyright

Submit your manuscript here:  
[http://www.biomedcentral.com/info/publishing\\_adv.asp](http://www.biomedcentral.com/info/publishing_adv.asp)

